



DE VALK
YACHT BROKERS



VILM 121



DE VALK
YACHT BROKERS

BROKER'S COMMENTS

The Vilm 121 is a robust and stable motorsailer built on the german Island of Rugen. The Vilm 121 has a semi long keel S-Shaped full for reliable and safe sailing at sea. Her deep center cockpit with fixed dog house provides ample space for social gatherings while at the same time is deep and sheltered for the possible rough condions at sea. The Vilm 121 has a double steering positions and hydraulic bowthruster for manouvering small marinas. Well maintained and ready to go. She is now ready to be admired and inspected in our sales marina in hindeloopen.

Hans Visser

SPECIFICATIONS

Dimensions	12.20 x 3.65 x 1.45 (m)	Builder	Bootsbau Rugen
Built	1988	Cabins	2
Material	GRP	Berths	6
Engine(s)	1 x Volvo MD31A diesel	Hp/Kw	63.00 (hp), 46.37 (kw)
Asking price	sold (VAT)	Lying	at sales office

CONTACT

Sales office	De Valk Hindeloopen B.V.	Telephone	+31 514 52 40 00
Address	Oosterstrand 1 8713 JS Hindeloopen NL	E-mail	hindeloopen@devalk.nl

DISCLAIMER

These particulars are given in good faith as supplied but cannot be guaranteed.



GENERAL

Model	VILM 121
Type	motorsailer
LOA (m)	12,20
Beam (m)	3,65
Draft (m)	1,45
Air draft min (m)	14,50
Headroom (m)	1,95
Year built	1988
Launched	1989
Builder	Bootsbau Rugen
Country	Germany
Designer	Siegel en Ernsst
Displacement (t)	9,10
Ballast (tonnes)	lead Approx 3
CE norm	NA
Hull material	GRP
Hull colour	white
Hull shape	S-bilged
Keel type	long keel
Superstructure material	mahogany
Rubbing strake	wood
Deck material	wood
Deck finish	teak
Superstructure deck finish	paint
Cockpit deck finish	teak
Antifouling (year)	2023
Dorades	2 x
Window frame	aluminium
Window material	tempered glass
Deckhatch	yes



Fuel tank (litre)	stainless steel 450
Level indicator (fuel tank)	On dashboard
Freshwater tank (litre)	stainless steel 450
Wheel steering	hydraulic
Inside helm position	yes
Outside helm position	Wooden with stainless steel wheel
Emergency tiller	yes
More info on hull	Underwater made bare 2014 then 3 layers of epoxy
Extra info	Maintained by 1 professional since 2000
Extra info	Inside a heated winterstorage each winter since 2000

ACCOMMODATION

Cabins	2
Berths	6
Interior	mahogany
Layout	Private use
Floor	parquet
Aft deck	yes
Doghouse	yes
Saloon	yes
Headroom saloon (m)	1,90
Heating	calorgas ducted hot air Eberspacher
Navigation center	yes
Chart table	yes
Aft Cabin	yes
Dinette to convert into berth	yes
Sliding door to cockpit	yes
Galley	L shaped
Countertop	wood
Sink	stainless steel
Cooker	calor gas Eno Mendoza 3 burner



Oven	In cooker
Fridge	Supercool 12 V - 6 A
Hot water system	220V + engine
Water pressure system	electrical
Owners cabin	double bed
Bed length (m)	1,95
Wardrobe	hanging and shelves
Bathroom	separate
Toilet	separate
Toilet system	manual
Wash basin	in the bathroom
Shower	yes
Guest cabin 1	v-bed
Bed length (m)	1,95
Wardrobe	shelves
Bathroom	shared
Toilet	shared
Shower	shared

MACHINERY

No of engines	1
Make	Volvo
Type	MD31A
HP	63
kW	46.37
Fuel	diesel
Maximum speed (kn)	7
Cruising speed (kn)	6
Engine hours	3242
Engine cooling system	freshwater heat exchanger
Drive	shaft



Shaft seal	yes
Engine controls	manual Double, aft new 2011
Gearbox	mechanical
Bowthruster	hydraulic
Gearbox	mechanical
Exhaust	watercooled
Propeller type	fixed
Propeller blades	3
Propeller shaft material	stainless steel
Shaft lubrication	grease
Manual bilge pump	yes
Electrical installation	12 V DC and 220 V AC
Batteries	3 x New 2025
Start battery	1 x 140 AH Varta
Service battery	2 x 140 AH Varta
Battery monitor	Mastervolt
Battery charger	Mastervolt Ivo Smart Charger 12/40-3
Shorepower	with cable

NAVIGATION

Compass	Inside position: Plastimo contest 130 Outside position: Vetus
Depth sounder	Data on plotter
Log	Data on plotter
Windset	Data on plotter
VHF	Sailtron type R104 Sailtron Sailor Compact VHF RT2048
Autopilot	Navico Wheel pilot WP5000
GPS	yes
Plotter	Raymarine
Weather receiver	Radiotelex Weatherman
Electronic chart(s)	yes
Navigation lights	yes



EQUIPMENT

Fixed windscreen	yes
Cockpit cover	2013
Winter cover	yes
Cockpit cushions	yes
Cockpit table	yes
Boarding ladder	yes
Anchor	yes
Windlass	yes
Sea railing	wire
Grab rail (superstructure)	wood
Pushpit	yes
Pulpit	yes
Life raft	container
Horn	air pressure
TV receiver	yes
Radio	Blaupunkt ACR 2221
Speakers in salon	yes
Clock - barometer	yes
Fire extinguisher	yes
Latest extinguisher survey	2025

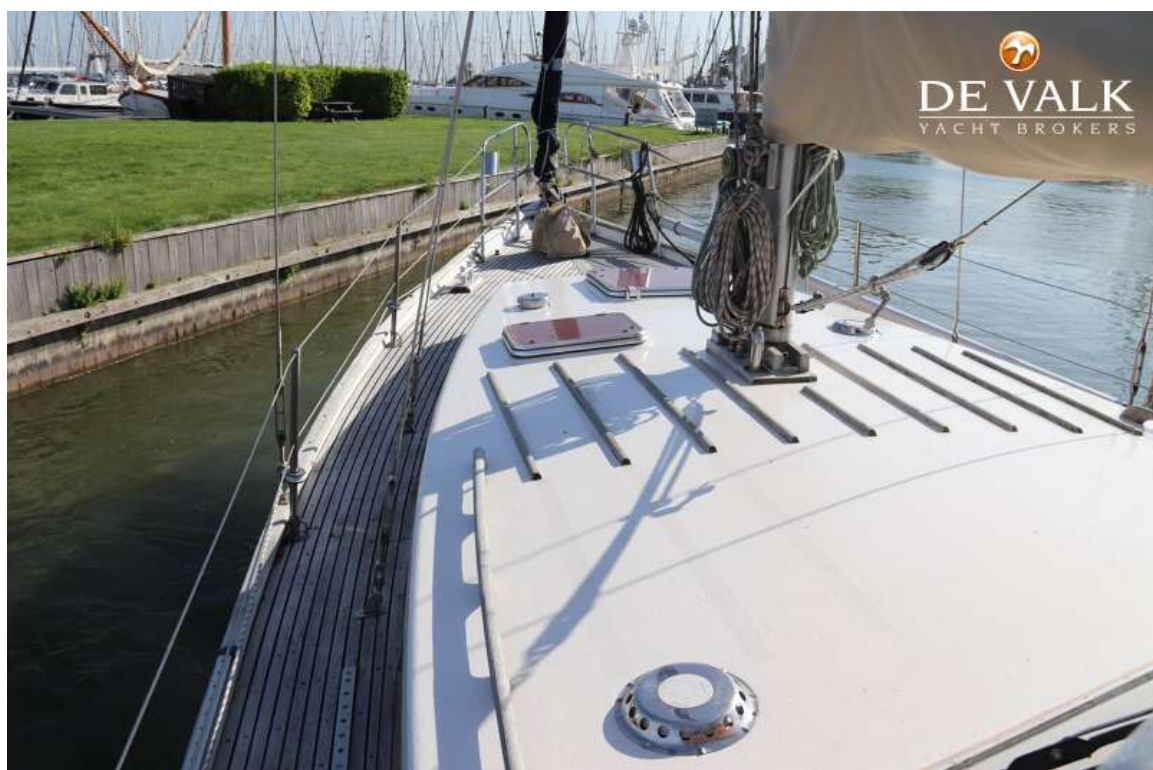
RIGGING

Rigging	ketch
Standing rigging	wire
Material mast	aluminium
Spreaders	1 set
Mainsail	2005 25,5 m2
Mainsail cover	2013
Mizzen	2006 8,5 m2
Mizzen sailcover	2013



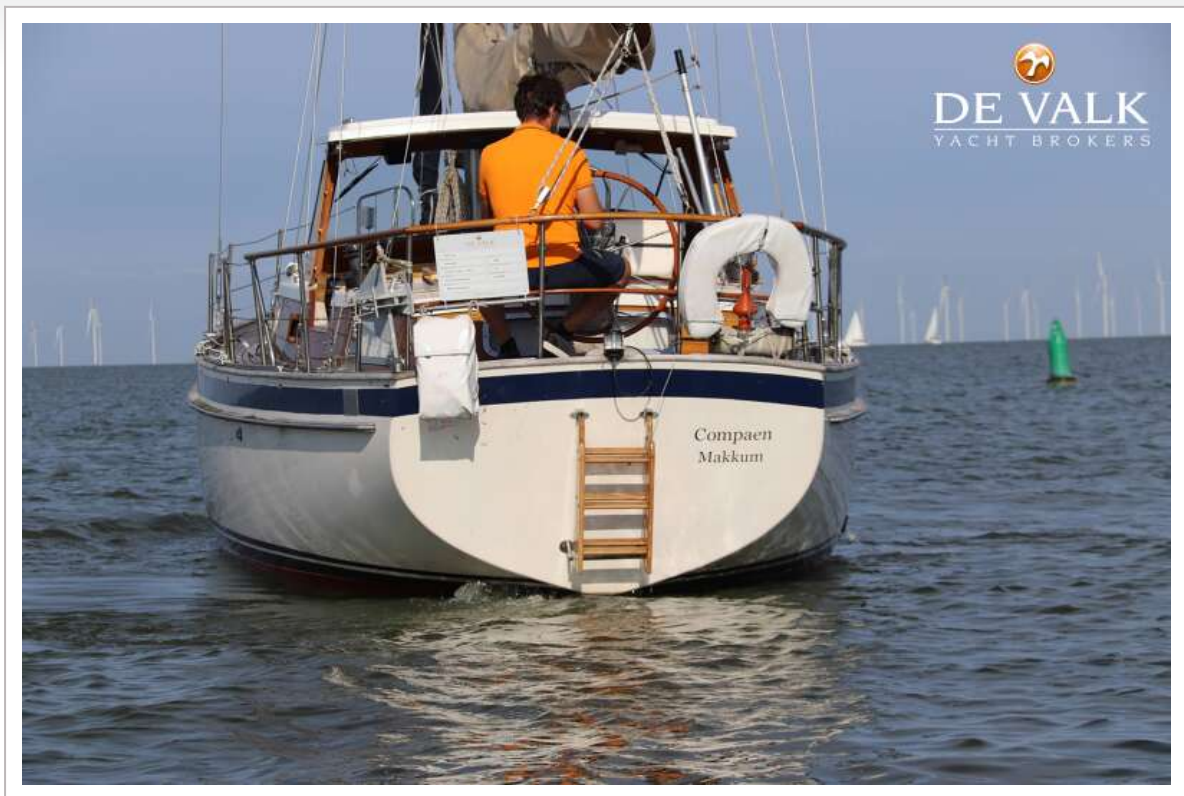
Jib	Furling
Genoa	2008 39 m2 for furler
Genoa III	yes
Genoa furler	Furlex 2009
Genoa cover	2009
Gennaker	2008 86 m2
Reefing System	slabreefing
Boomvang	tackle
Genoa sheetwinches	2x Meissner 28 two speed self tailing
Halyard winches	2x Meissner two speed self tailing
Multifunctional winches	Electric winh handle
Spi-pole	aluminium





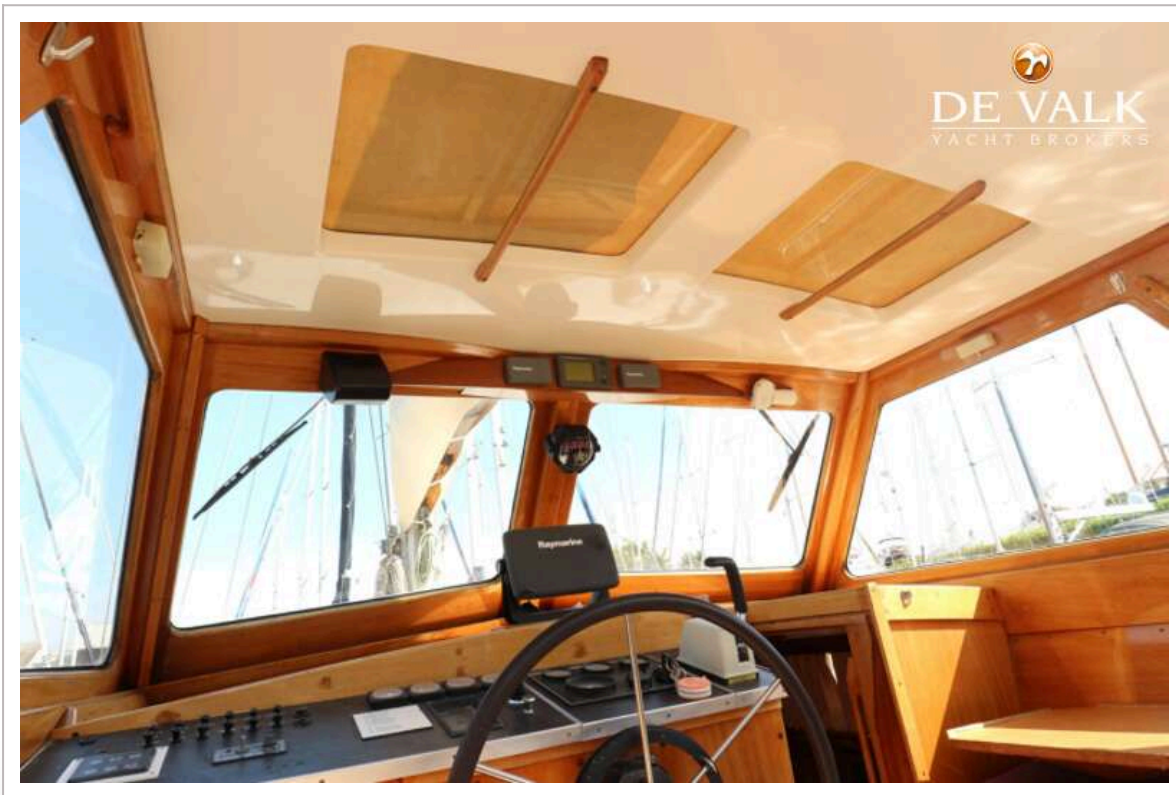


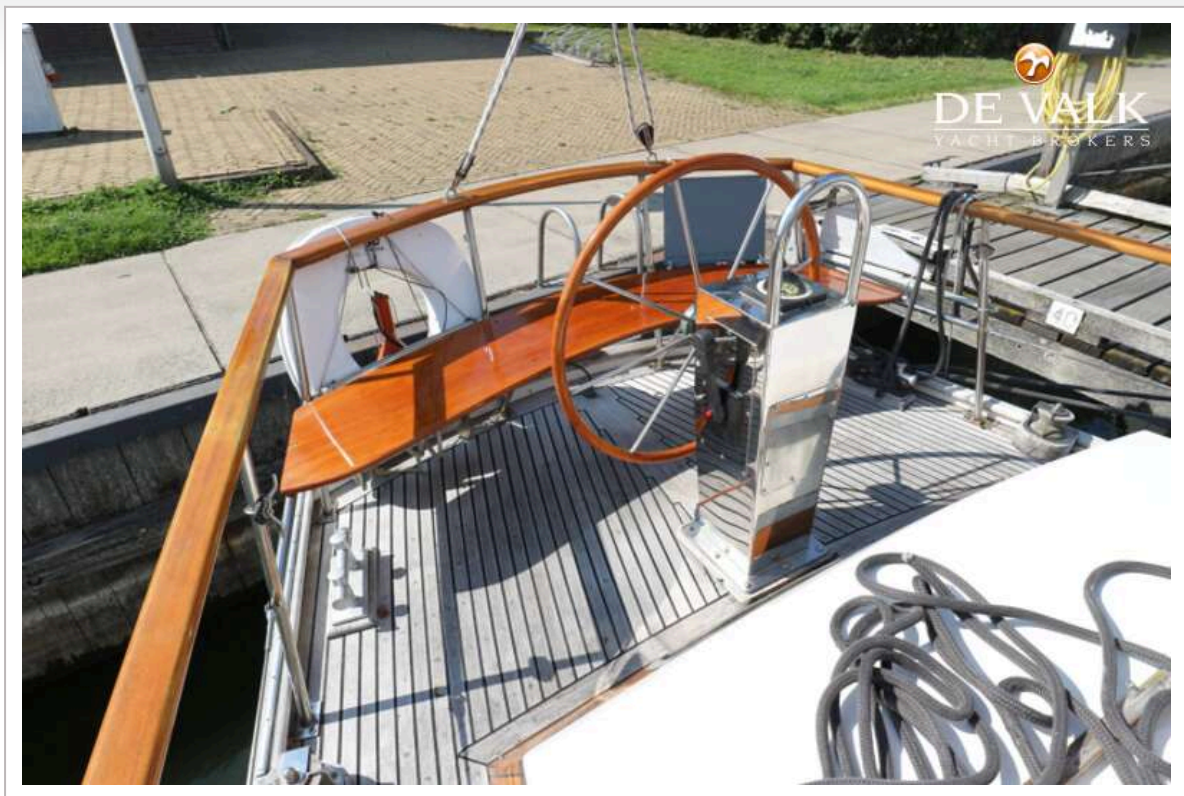




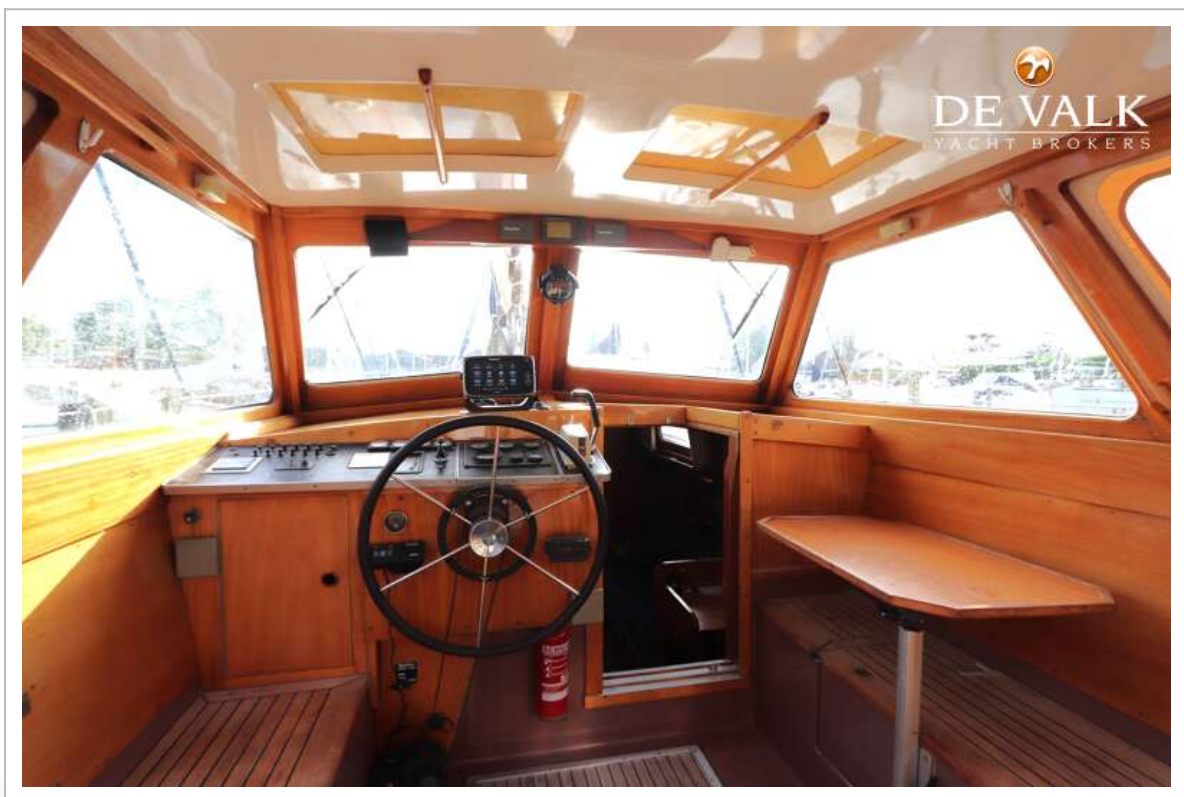






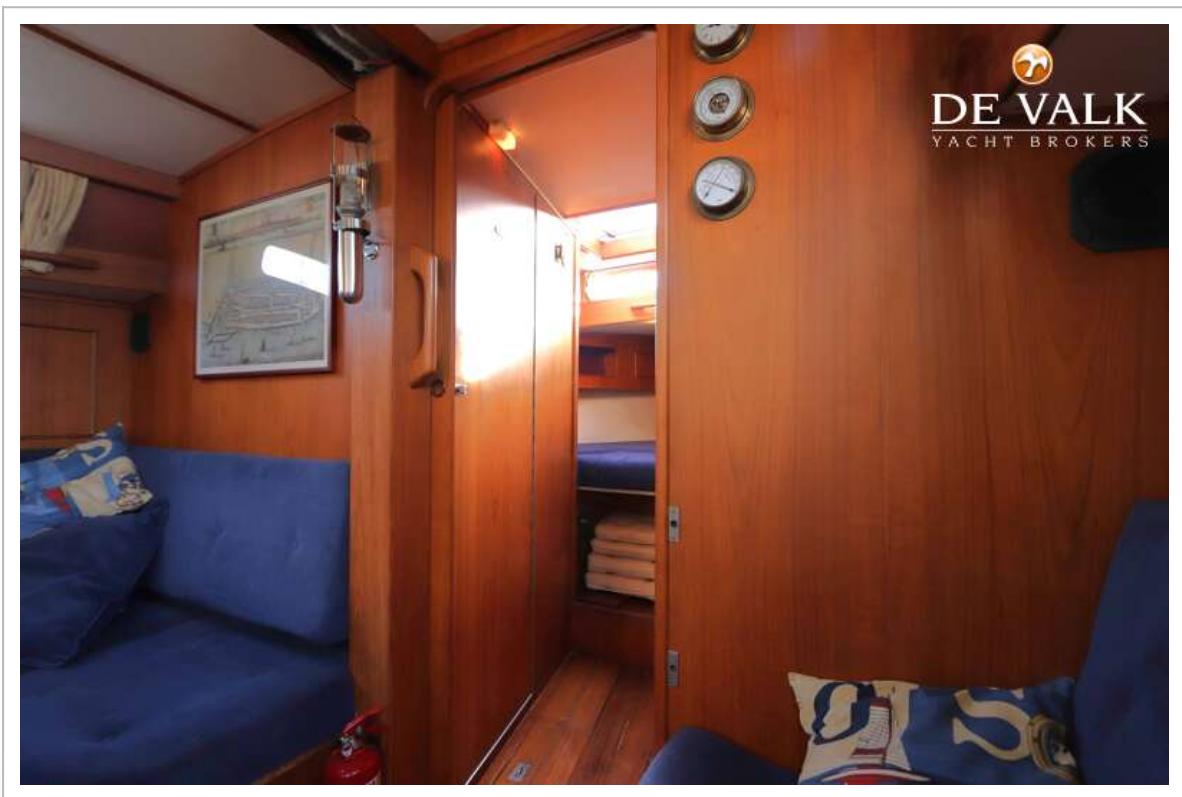


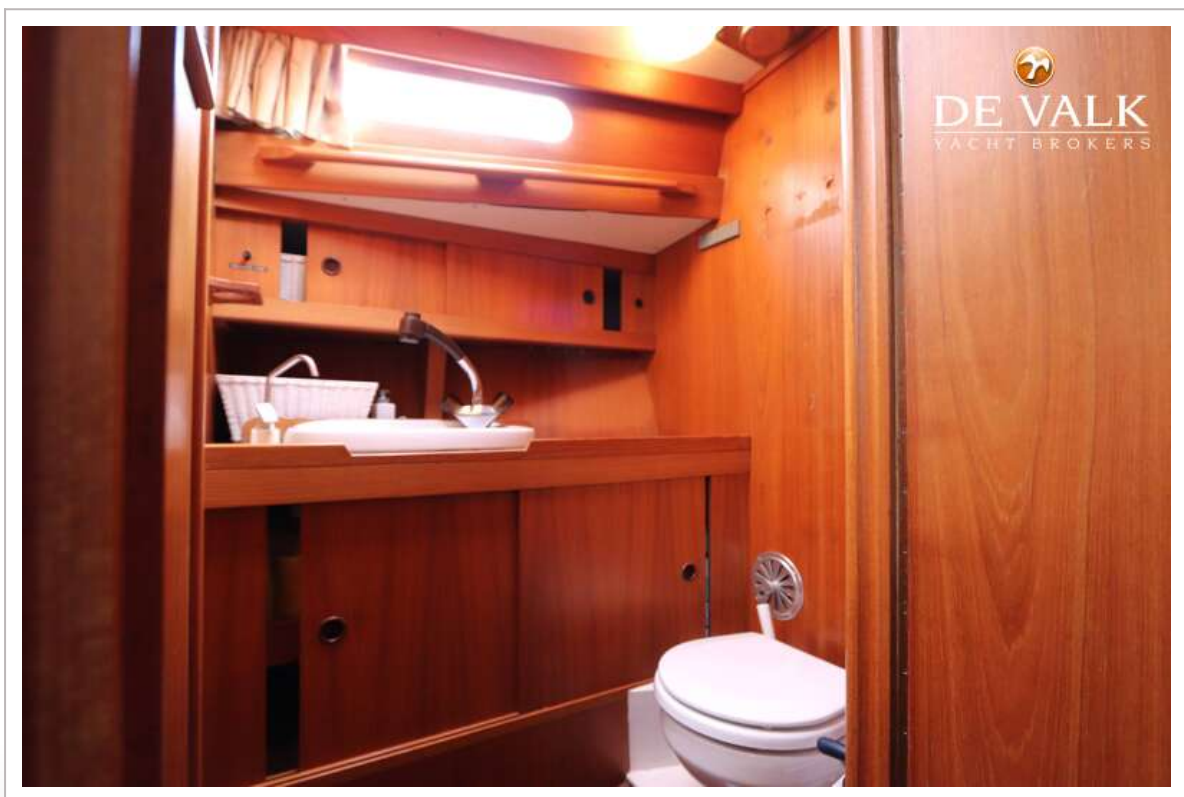
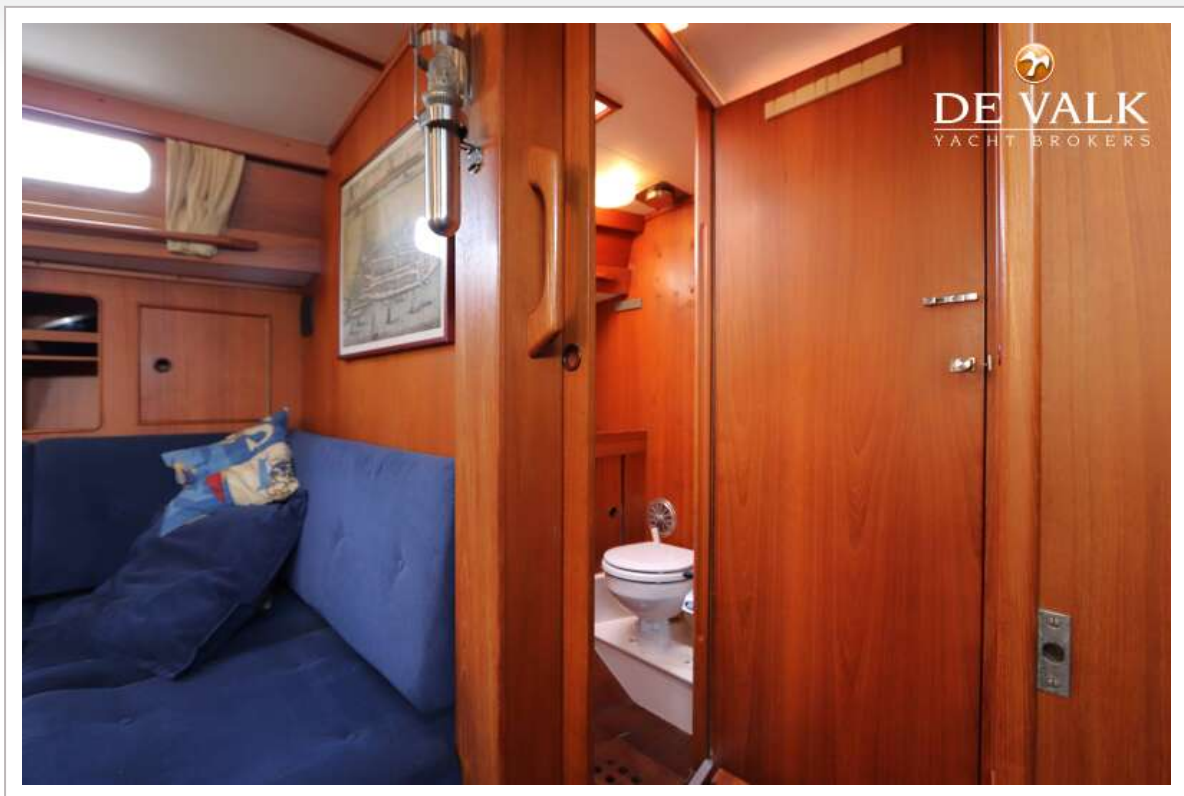


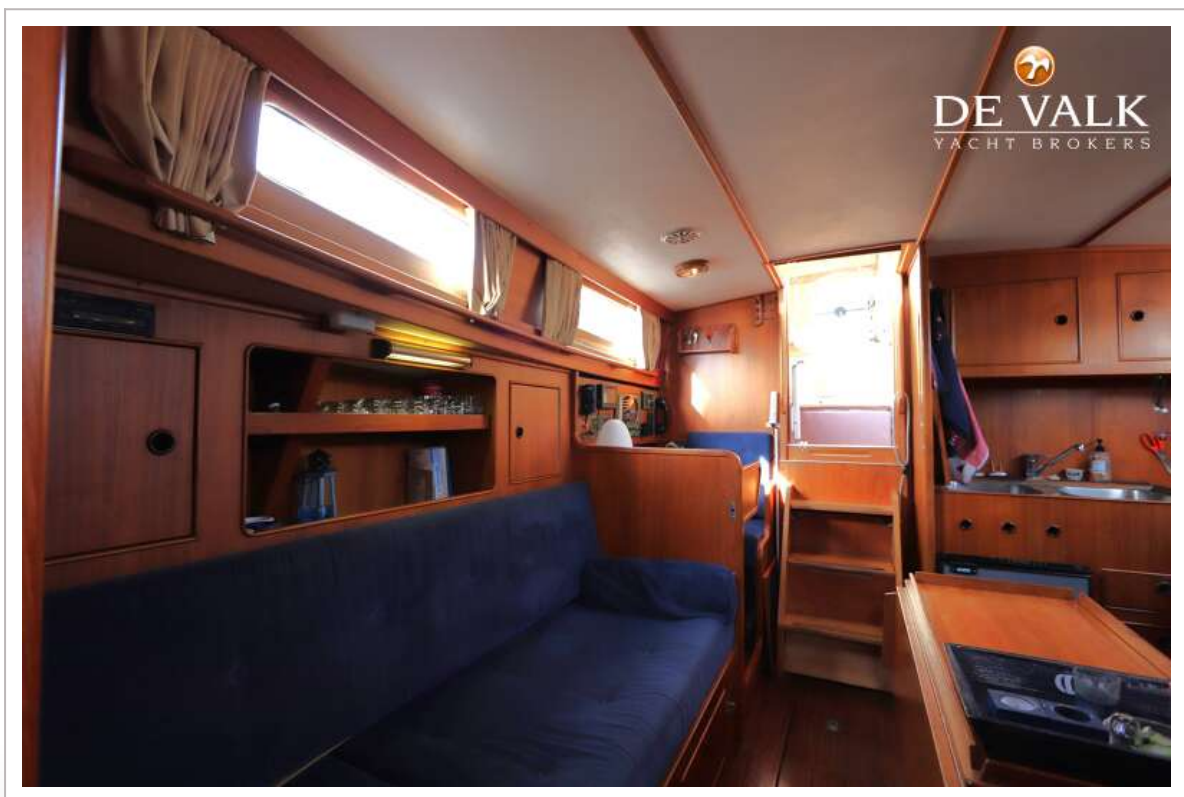
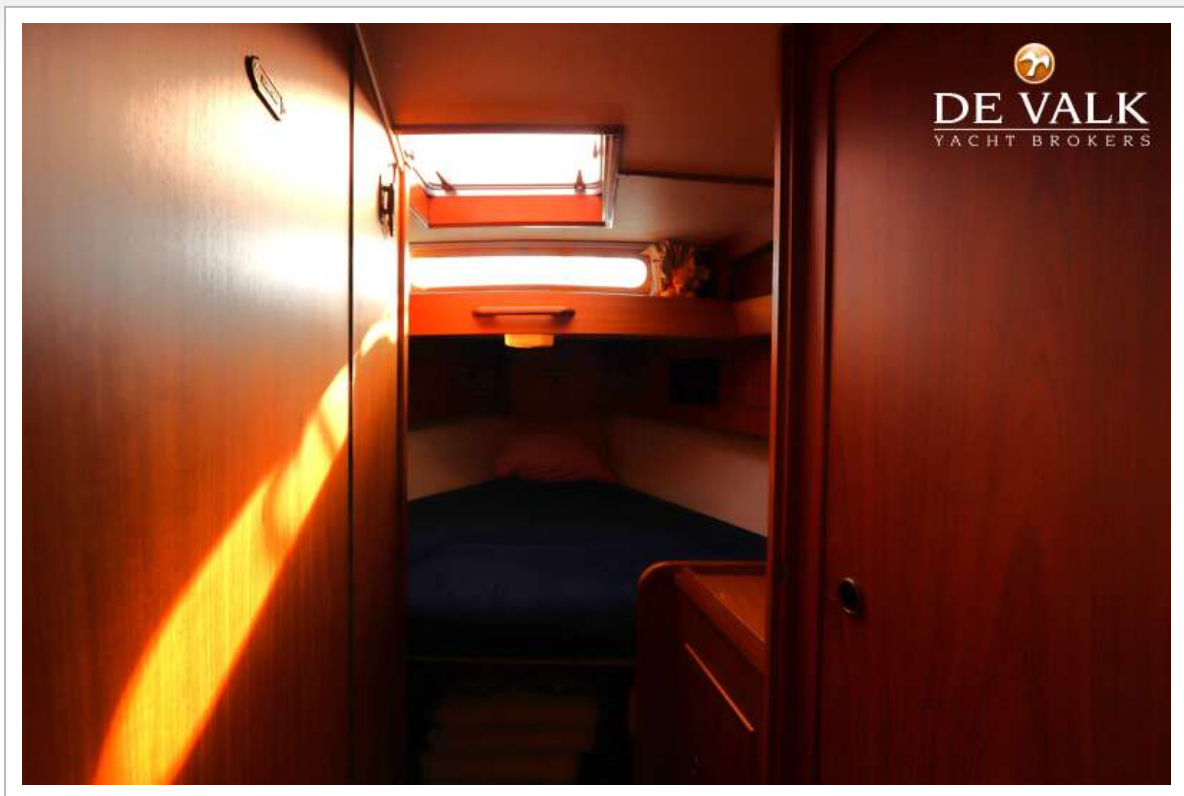


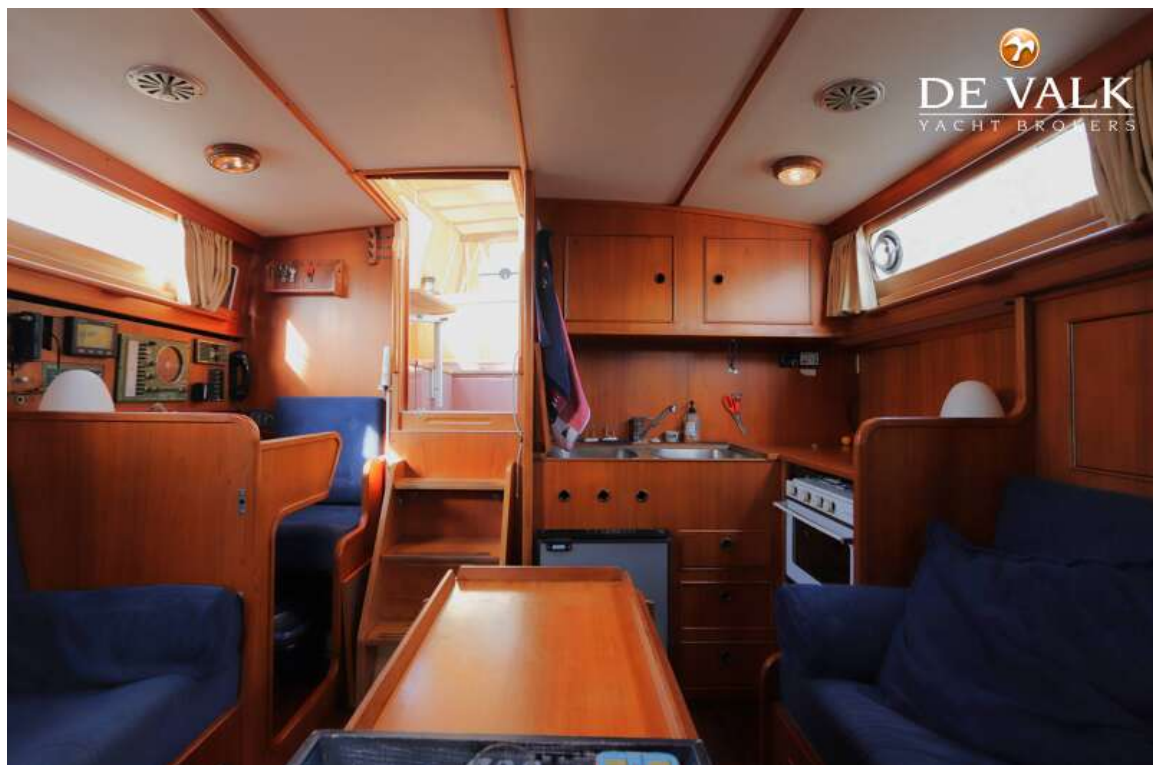


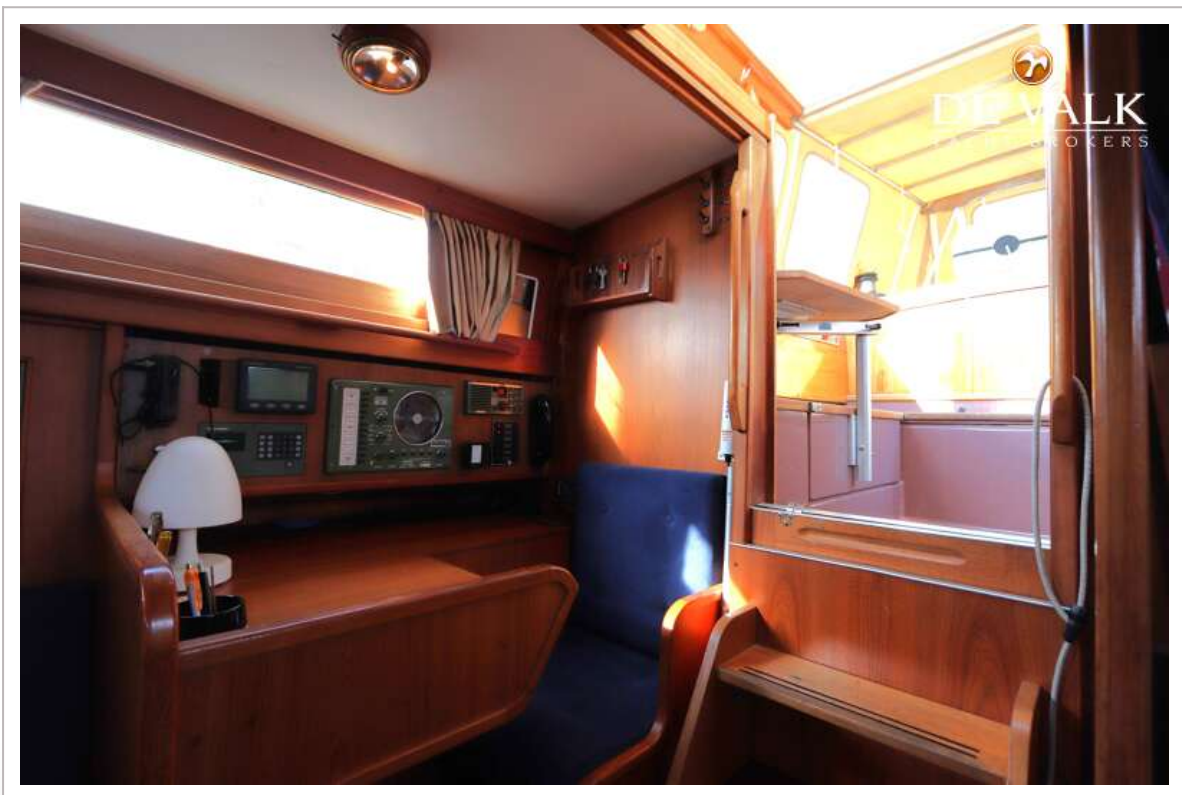


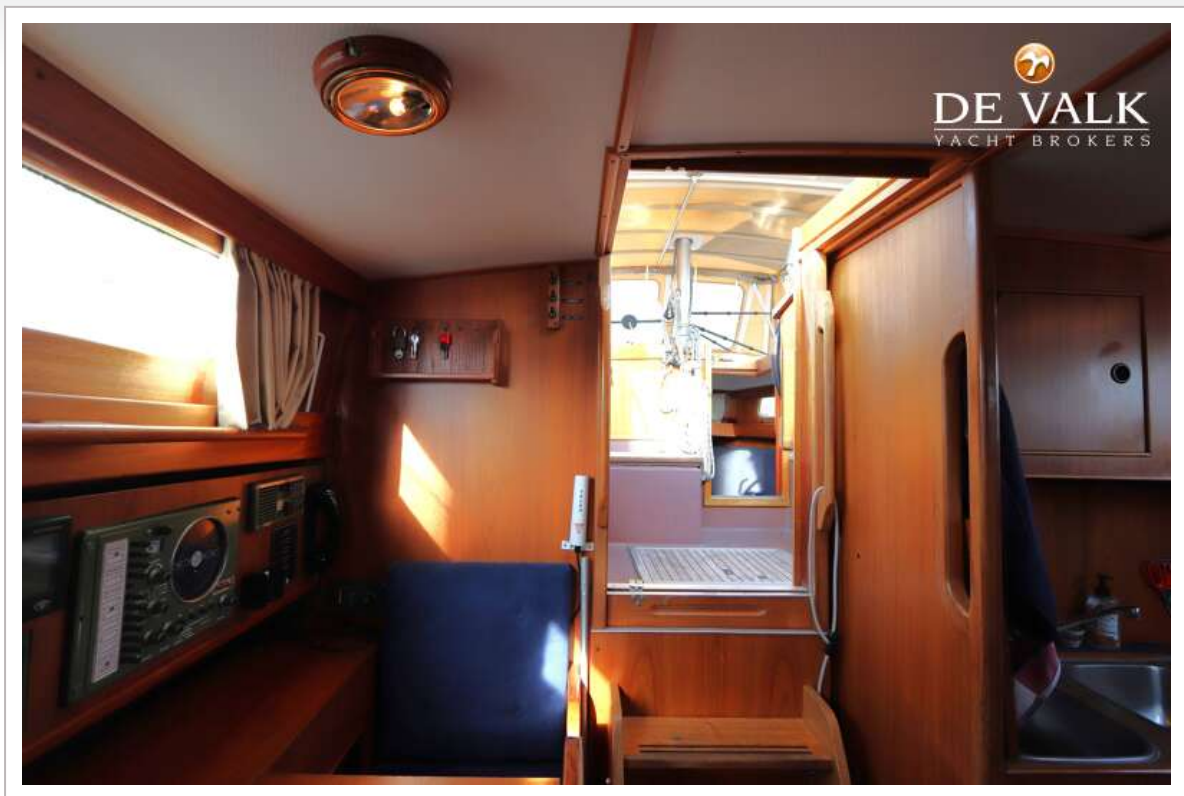


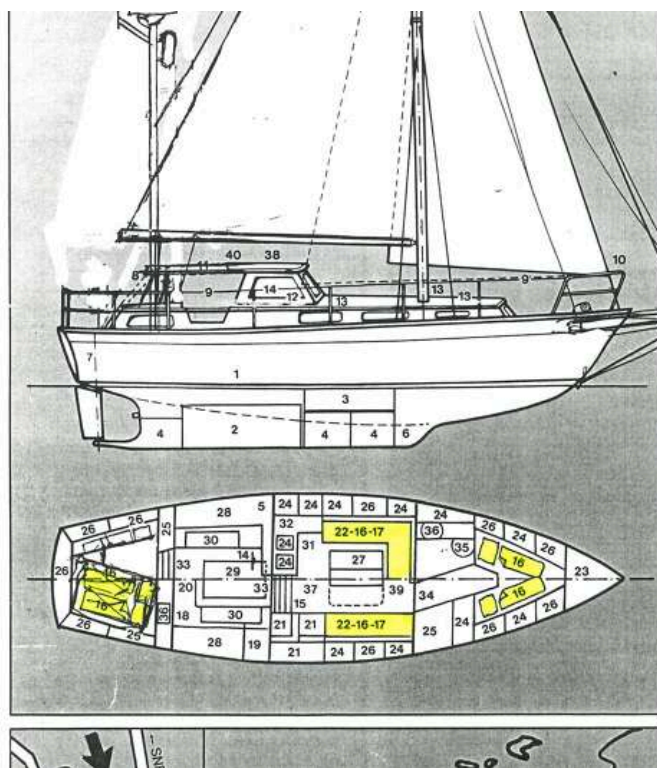












Standaard zeiloppervlak	58 m ²
Grootzeil (standaard)	10 m ²
Fok (standaard)	4 m ²
Genua (extra)	44 m ²
Spinnaker (extra)	70 m ²
Bezaan (standaard)	8.5 m ²
Volvo MD 32	62 pk
Velvet hydraulische keerkoppeling	3:1

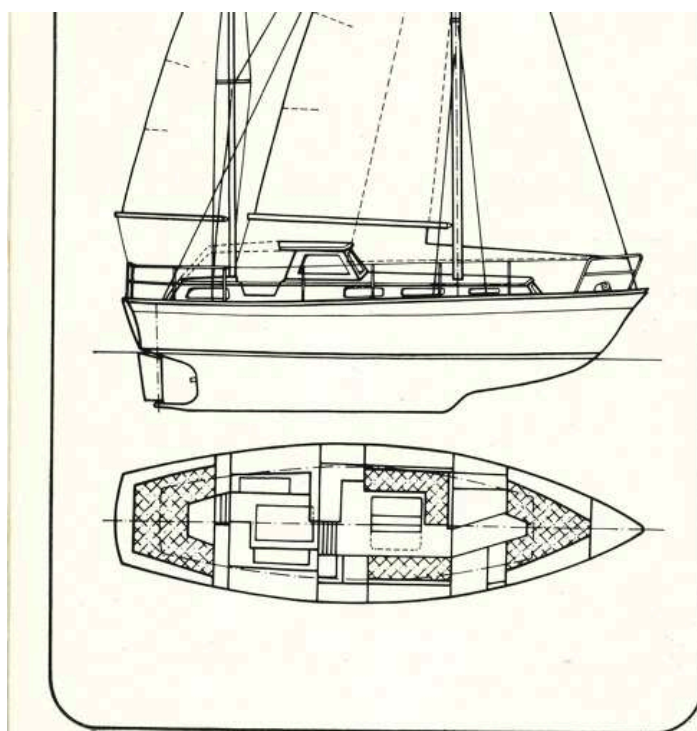
BETEKENIS VAN DE CIJFERS

1 Machiniekamer	21 Navigatiehok
2 Dieseltank	22 Bergruimte
3 Watertank	23 Ankerkettingruim
4 Ballast	24 Kast
5 Fæcalientank	25 Kleerkast
6 Kielruimte	26 Ophergyak
7 Rocrorophang	27 Salontafel
8 Hekreling	28 Bakskist
9 Zeereling	29 Motorluik
10 Preekstoel	30 Opklaphank
11 Kuittent	31 Kombuis
12 Schuifluik	32 Aanrecht
13 Ventilatieluik	33 Valdeur
14 Stuurstand	34 Schuifdeur
15 Kajuittrap	35 Toilet
16 Kooi	36 Wastafel
17 Bank	37 Vloer
18 Accurom	38 Perspectramen
19 Gasbun	39 Mastondersteuning
20 Heteluchtverwarming	40 Handreling

KOALITE YACHTS BV

Tussen Sloter-, Heeger- en
IJsselmeer ligt Koalite Yachts in één
van de mooiste watersportgebieden





Schlafplätze: 6-7
 Motor: Volvo Penta-Dieselmotor
 Typ: MD 21 B
 max. Leistung SAE: 75 PS
 Geschwindigkeit: 7,5 kn
 Dieselmotortyp: 450 l
 Trinkwasser: 450 l
 Segelfläche Ketch: 60 m²

Technische Änderungen bleiben vorbehalten!

Sonderwünsche können im Rahmen terminlicher und materieller Gegebenheiten berücksichtigt werden.

Hersteller

VEB Bootsbau „Rügen“
 DDR - 2331 Lauterbach
 Telefon: Putbus 435

