



DE VALK
YACHT BROKERS



JONGERT 60



DE VALK
YACHT BROKERS

BROKERAGE | CHARTER | BERTHS | FINANCE | INSURANCE | YACHT MANAGEMENT

BROKER'S COMMENTS

The Jongert 60 named "Tuatara" is a very well maintained classic sailing yacht with a timeless design. The "Tuatara" has had her last refit in 2018 during which, among other things, the yacht was completely sandblasted and re-sprayed in two-component paint and the entire deck was fitted with Flexiteek. The Jongert 60 is an extremely safe sailing yacht which will defy any weather at sea. The Jongert 60 will be auctioned online at <https://bit.ly/4izQHCU>. Bids can only be placed online at Brightauctions.

Jochem Heijermans

SPECIFICATIONS

Dimensions	20.00 x 4.20 x 2.10 (m)	Builder	Jongert Medemblik
Built	1969	Cabins	4
Material	Steel	Berths	8
Engine(s)	1 x Ford 2715E diesel	Hp/Kw	125.00 (hp), 92.00 (kw)
Asking price	sold (VAT)	Lying	elsewhere / Not at sales office

CONTACT

Sales office	De Valk Belgium	Telephone	+32 586 80 218
Address	1401 PT Nieuwpoort BE	E-mail	belgium@devalk.nl

DISCLAIMER

These particulars are given in good faith as supplied but cannot be guaranteed.



GENERAL

Model	JONGERT 60
Type	sailing yacht
LOA (m)	20,00
LWL (m)	14,93
Beam (m)	4,20
Draft (m)	2,10
Headroom (m)	2,00
Year built	1969
Builder	Jongert Medemblik
Country	The Netherlands
Displacement (t)	40
Hull material	steel
Hull colour	white
Hull shape	S-bilged
Keel type	long keel
Superstructure material	steel
Rubbing strake	steel
Deck material	steel
Deck finish	synthetic teak Flexiteek (2018)
Superstructure deck finish	paint
Cockpit deck finish	synthetic teak Flexiteek (2018)
Antifouling (year)	2023
Dorades	yes
Window frame	aluminium
Window material	glass
Deckhatch	4x
Portholes	aluminium
Fuel tank (litre)	steel 2000 (cleaned & inspected 2018)
Level indicator (fuel tank)	yes
Freshwater tank (litre)	steel 1500 (cleaned & inspected 2018)



Level indicator (freshwater)	yes
Blackwater tank (litre)	steel 500 (cleaned & inspected 2018)
Blackwater tank extraction	pump
Wheel steering	hydraulic
More info on paintwork	Two component repainted (2018)

ACCOMMODATION

Cabins	4
Berths	8
Interior	mahogany
Floor	wood
Pilot house	yes
Saloon	yes
Headroom saloon (m)	2
Heating	diesel ducted hot air Webasto Air Top 5000 D (2022 overhauled)
Navigation center	yes
Chart table	yes
Dinette	yes
Opening door to cockpit	yes
Galley	yes
Countertop	wood
Sink	stainless steel
Cooker	calor gas Force 10
Oven	yes
Extractor	yes
Fridge	2x
Hot water system	220V + engine Isotherm
Water pressure system	electrical
Owners cabin	double bed
Wardrobe	hanging/drawers/shelves
Bathroom	en suite (2018)



Toilet	en suite (2018)
Toilet system	electric
Wash basin	in the bathroom (2018)
Shower	en suite (2018)
Guest cabin 1	double bed
Wardrobe	hanging and shelves
Bathroom	shared
Toilet	shared
Toilet system	electric
Wash basin	in the cabin
Shower	shared
Guest cabin 2	bunk bed
Wardrobe	hanging and shelves
Guest cabin 3	bunk bed
Wardrobe	hanging and shelves
Wash basin	in the cabin

MACHINERY

No of engines	1
Make	Ford
Type	2715E
HP	125
kW	92
Fuel	diesel
Year installed	1969
Year of overhaul	2000
Engine hours	2293
Engine cooling system	freshwater heat exchanger
Drive	shaft
Engine controls	bowden cable
Gearbox	hydraulic



Bowthruster	electric Vetus (2018)
Exhaust	watercooled
Propeller type	fixed
Shaft lubrication	oilbath
Electric bilge pump	yes
Electrical installation	24V/220V
Generator	silent separator Vetus 6Kva (1996)
Batteries	yes
Start battery	(2023)
Service battery	24V/800Ah (2021)
Generator battery	12V
Bowthruster battery	4x (2018)
Battery monitor	yes
Battery charger	Mastervolt 24V/75Ah
Inverter	Whisper Power 24V/2000
Shorepower	with cable

NAVIGATION

Compass	yes
Electric compass	Autohelm
Depth sounder	Autohelm
Log	Autohelm
Windset	Autohelm
VHF	B&G (2018)
Autopilot	Autohelm ST7000 + reserve
Rudder angle indicator	Autohelm ST7000+
GPS	Garmin
AIS transceiver	yes
Navigation lights	yes

EQUIPMENT



Fixed windscreen	yes
Sprayhood	yes
Cockpit cover	yes
Bimini	yes
Cockpit cushions	yes
Anchor	2x
Windlass	electrical
Capstan	yes
Dinghy	rigid hull (2015)
Outboard	Evinrude etec 30pk (2019)
Sea railing	wire
Railing side opening gates	2x
Pushpit	yes
Pulpit	yes
Life raft	container
Last life raft survey	Valid until 03/2026
Horn	yes
Fenders	yes
Mooring lines	yes
TV	yes
Radio	yes
Clock - barometer	yes
Fire extinguisher	yes

RIGGING

Rigging	ketch
Standing rigging	wire (inspected 2018)
Material mast	aluminium
Spreaders	2x
Mainsail	(2020)
Mainsail cover	yes



Jib	(2022)
Genoa	(2012)
Genoa furler	(2012)
Reefing System	slabreefing
Backstay adjuster	tackle
Boomvang	mechanical
Primary sheet winch	yes
Genoa sheetwinches	yes
Halyard winches	yes





BROKERAGE | CHARTER | BERTHS | FINANCE | INSURANCE | YACHT MANAGEMENT



DE VALK
YACHT BROKERS



**This yacht will be auctioned,
for further details please visit www.devalk.nl**

**Dit schip zal worden geveild,
voor meer informatie gaat u naar www.devalk.nl**

**Dieses Schiff wird versteigert,
für weitere informationen besuchen Sie www.devalk.nl**

WWW.DEVALK.NL



DE VALK
YACHT BROKERS



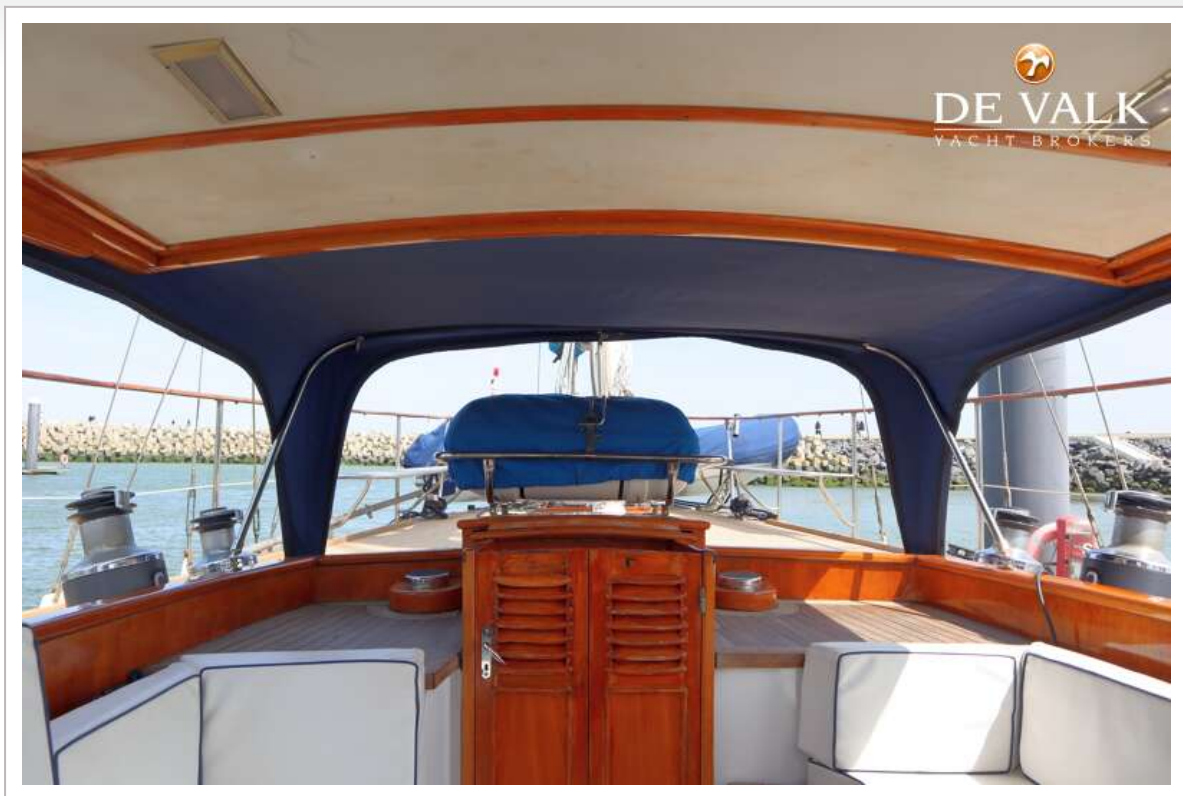


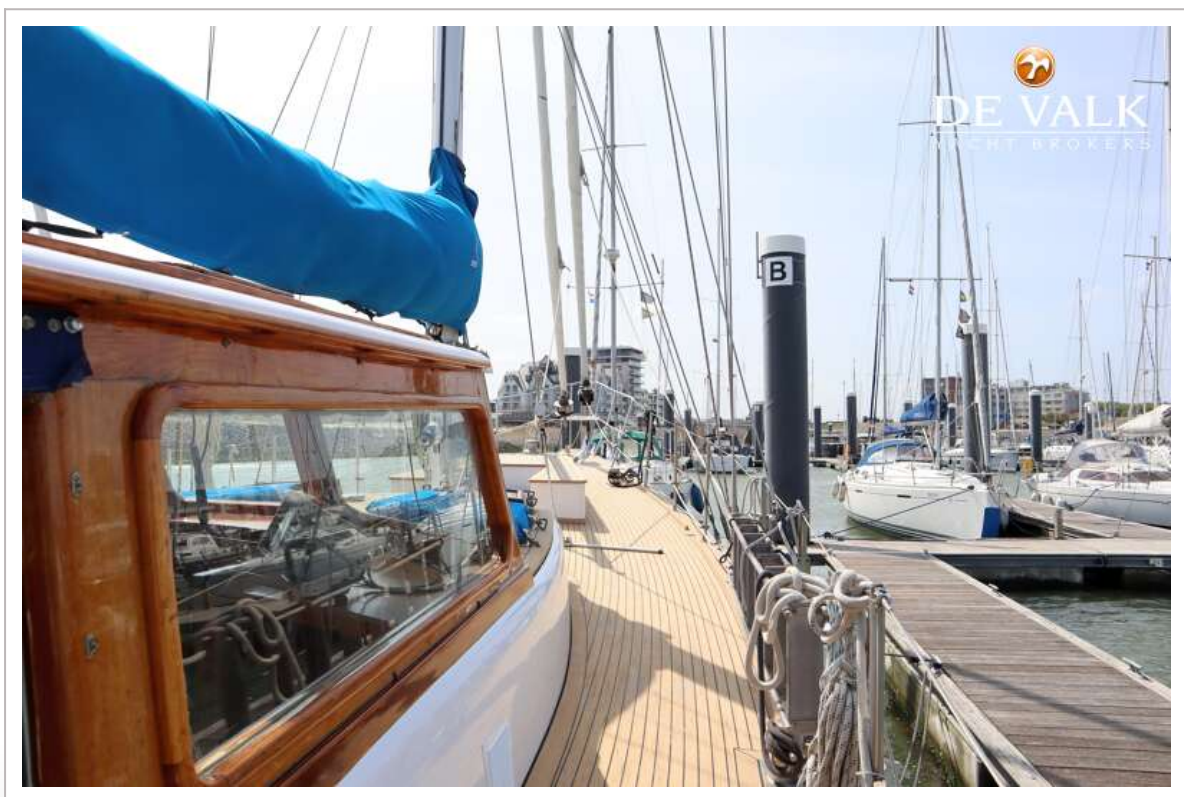


JONGERT 60

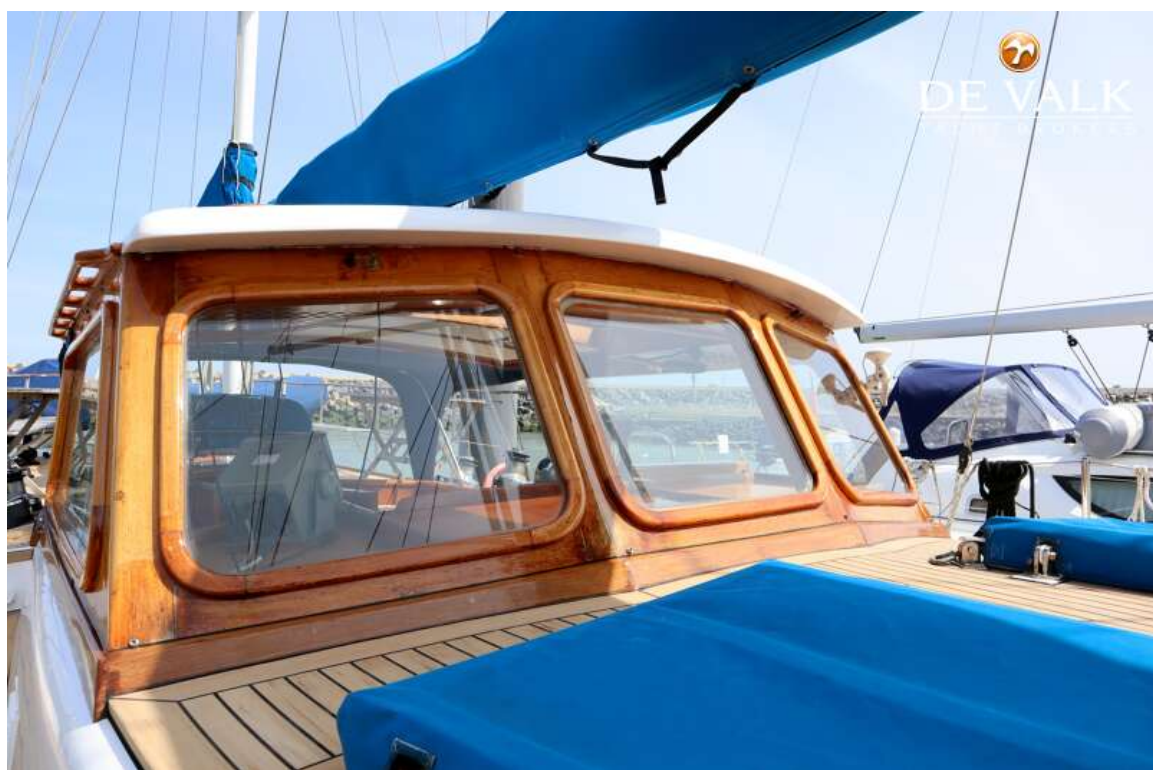


JONGERT 60









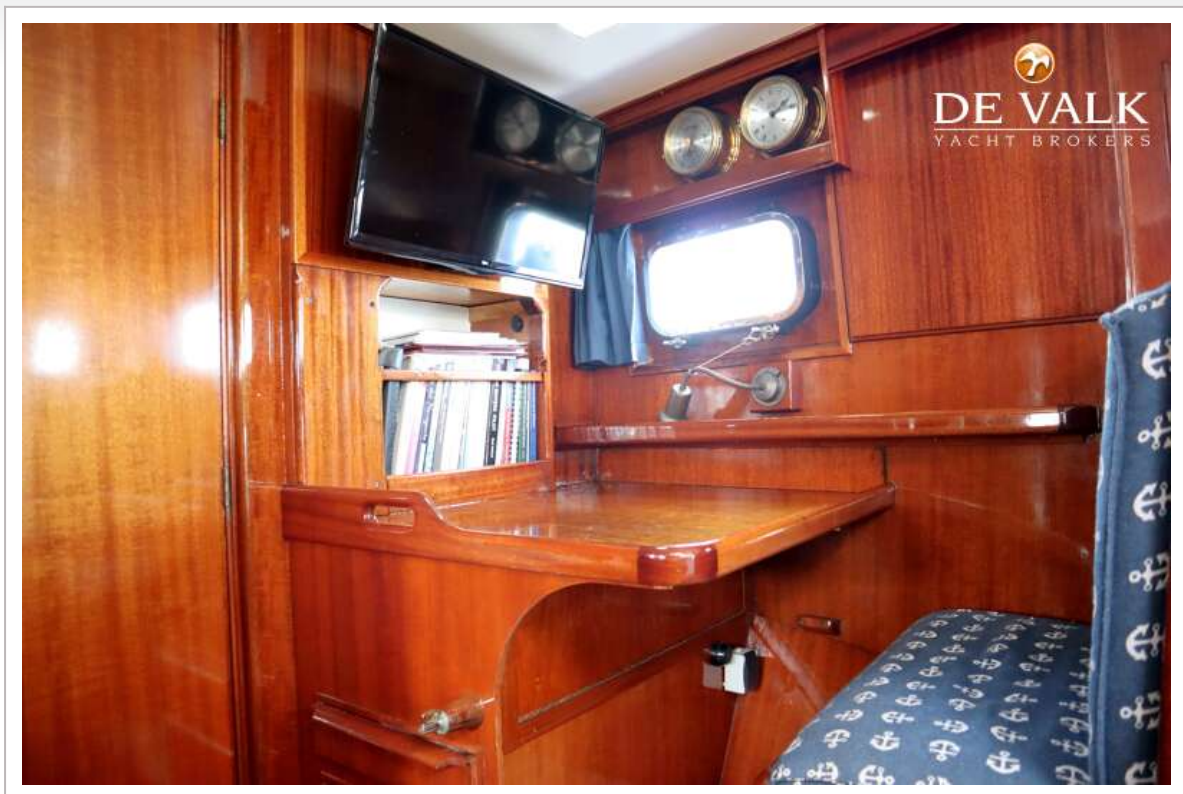
JONGERT 60

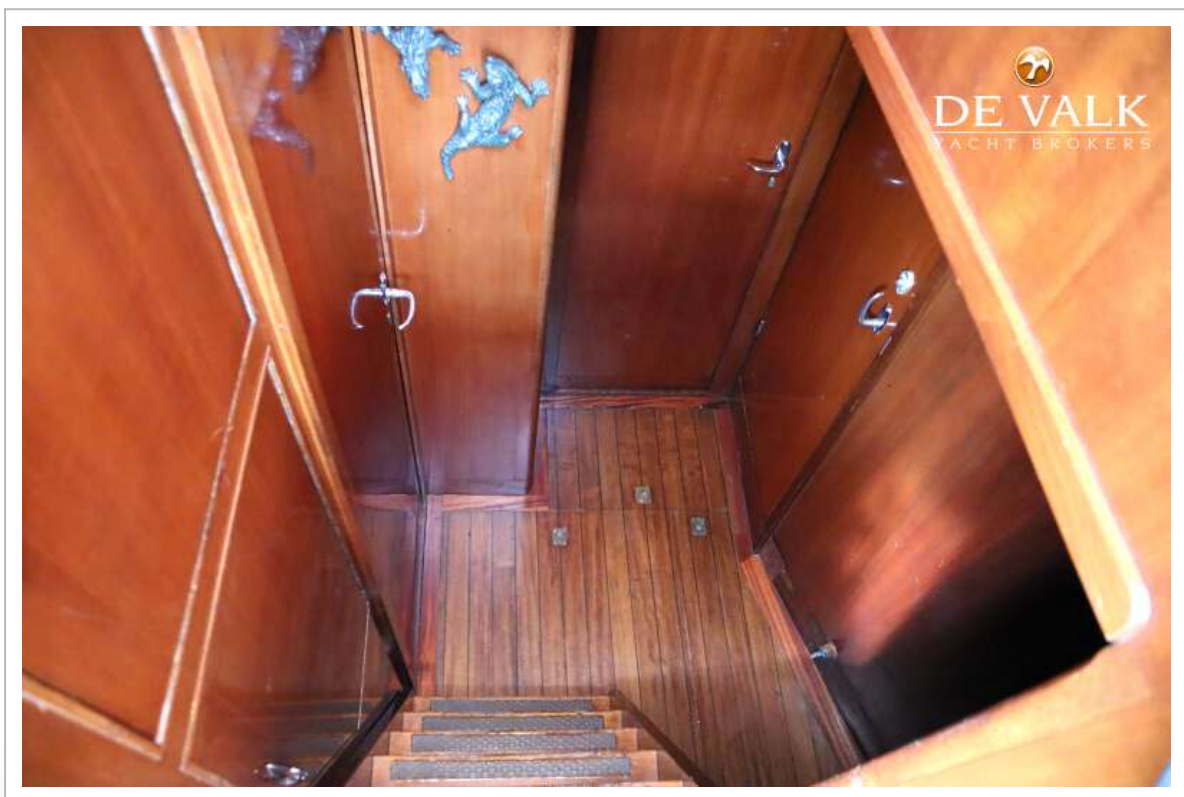




JONGERT 60







JONGERT 60







