



OYSTER 485 DECK SALOON



OYSTER 485 DECK SALOON

BROKER'S COMMENTS

The Oyster 485 is a typical Holman and Pye design with low freeboard, a gentle sheerline, and balanced ends. She is a popular bluewater cruiser for those seeking a yacht under 50 feet. Her length allows for a separate shower in the owner's head, and a dedicated generator space, just aft of the engine. Featuring a deck saloon in style with her three cabin layout, a centre cockpit, the 485 is a sleek and comfortable world cruising yacht, that is easily handled by a couple. For the owner she is the boat they were looking for and she delivered exactly what they wanted. A fantastic companion.

Jörg Hellmich

SPECIFICATIONS

| | | | |
|---------------------|--------------------------|----------------|------------------------|
| Dimensions | 14.78 x 4.27 x 2.20 (m) | Builder | Oyster Marine Ltd |
| Built | 1993 | Cabins | 3 |
| Material | GRP | Berths | 6 |
| Engine(s) | 1 x Perkins 4236M diesel | Hp/Kw | 90.00 (hp), 66.24 (kw) |
| Asking price | sold (VAT) | Lying | at sales office |

CONTACT

| | | | |
|---------------------|------------------------------------------------------------|------------------|-------------------|
| Sales office | De Valk Almeria | Telephone | +34 950 497 825 |
| Address | Puerto de Almerimar Darsena de la Batea Almerimar ES | E-mail | almeria@devalk.nl |

DISCLAIMER

These particulars are given in good faith as supplied but cannot be guaranteed.



OYSTER 485 DECK SALOON

GENERAL

| | |
|----------------------------|-------------------------------------|
| Model | OYSTER 485 DECK SALOON |
| Type | sailing yacht |
| LOA (m) | 14,78 |
| LWL (m) | 11,91 |
| Beam (m) | 4,27 |
| Draft (m) | 2,20 |
| Air draft min (m) | 17,50 |
| Headroom (m) | 1,95 |
| Year built | 1993 |
| Launched | 1994 |
| Builder | Oyster Marine Ltd |
| Country | United Kingdom |
| Designer | Homann & Pyle |
| Displacement (t) | 22 |
| Ballast (tonnes) | 5,9 |
| Gross tonnage | 17 |
| Net tonnage | 5,9 |
| CE norm | NA |
| Hull material | GRP |
| Hull colour | white |
| Hull shape | V-shaped hull |
| Keel type | fin keel with bulb Iron cast & lead |
| Superstructure material | GRP |
| Deck material | GRP |
| Deck finish | teak Original (in good conditions) |
| Superstructure deck finish | teak Original (in good conditions) |
| Cockpit deck finish | teak |
| Antifouling (year) | 2023 |
| Dorades | yes |
| Window frame | aluminium |



OYSTER 485 DECK SALOON

| | |
|------------------------------|---------------------------------|
| Window material | glass |
| Deckhatch | yes |
| Insulation | yes |
| Fuel tank (litre) | GRP 530 |
| Level indicator (fuel tank) | Gauge |
| Freshwater tank (litre) | GRP 750 |
| Level indicator (freshwater) | Gauge |
| Blackwater tank (litre) | 30 (rubber) |
| Wheel steering | cable steering |
| Emergency tiller | yes |
| More info on hull | Hull is in excellent conditions |

ACCOMMODATION

| | |
|----------------------|---------------------------------|
| Cabins | 3 |
| Berths | 6 |
| Interior | teak In good conditions |
| Layout | 3 cabins |
| Floor | wood |
| Deck saloon | yes |
| Headroom saloon (m) | 1,95 |
| Heating | diesel ducted hot air Webasto |
| Chart table | yes |
| Aft Cabin | Owner's cabin |
| Convertible berth | In saloon |
| Galley | yes |
| Countertop | corian Walk through |
| Sink | stainless steel Double |
| Cooker | calor gas Stormforce (4 burner) |
| Oven | calor gas |
| Gas alarm | yes |
| Microwave/oven combi | Samsung Classic Collection |



OYSTER 485 DECK SALOON

| | |
|-------------------------|---------------------------------------|
| Fridge | Oyster |
| Freezer | Oyster (cooling pump overhauled 2023) |
| Hot water system | 220V + engine |
| Water pressure system | electrical |
| Manual and/or foot pump | yes |
| Kettle | yes |
| Hot water tap | yes |
| Coffee maker | yes |
| Crockery | yes |
| Owners cabin | double bed |
| Bed length (m) | 2,00 x 1,60 |
| Wardrobe | hanging/drawers/shelves |
| Toilet | en suite Aft |
| Toilet system | manual |
| Wash basin | at the toilet |
| Shower | en suite |
| Guest cabin 1 | v-bed |
| Bed length (m) | 2,00 x 1,60 |
| Wardrobe | yes |
| Toilet | shared FW |
| Toilet system | manual |
| Wash basin | at the toilet |
| Shower | shared |
| Guest cabin 2 | bunk bed Mid port |
| Bed length (m) | 2,00 x 0,80 |
| Wardrobe | yes |
| Extra info | Interior is in very good conditions |

MACHINERY

| | |
|---------------|---------|
| No of engines | 1 |
| Make | Perkins |



OYSTER 485 DECK SALOON

| | |
|--------------------------|--------------------------------------------|
| Type | 4236M |
| HP | 90 |
| kW | 66.24 |
| Fuel | diesel |
| Year installed | 1993 |
| Maximum speed (kn) | 7,5 |
| Cruising speed (kn) | 6 |
| Consumption (l/hr) | 3,5 |
| Range (nm) | 900 |
| Engine hours | 2320 |
| Engine cooling system | freshwater heat exchanger Replaced in 2023 |
| Drive | shaft |
| Shaft seal | New 2023 |
| Engine controls | bowden cable |
| Gearbox | mechanical HBW 250-2R |
| Bowthruster | electric |
| Exhaust | watercooled |
| Propeller type | feathering Maxprop |
| Propeller blades | 3 |
| Propeller shaft material | stainless steel |
| Shaft lubrication | water |
| Manual bilge pump | yes |
| Electric bilge pump | yes |
| Bilge alarm | yes |
| Generator | All fixings installed |
| Start battery | 2 x 12V / 100 Amp - Acid (2023) |
| Service battery | 6 x 12V / 72 Amp - Acid (2023) |
| Battery monitor | Magnetronic DCC4000 |
| Battery charger | Victron Skylla 24V / 50A |
| Inverter | Pros Kit (300 Watt) |
| Wind generator | Silent Wind (460+ Watt) |
| Solar panel | Sunwind (250 Watt) |



OYSTER 485 DECK SALOON

| | |
|------------|--------------------|
| Shorepower | with cable 230V |
| Watermaker | Seafresh (65 L/Hr) |
| Extra info | Battery Isolator |

NAVIGATION

| | |
|------------------------|-------------------------------|
| Compass | Plastimo (2019) |
| Depth sounder | yes |
| Depth sounder/log | Raymarine i70 (2019) |
| Log | Autohelm Speed |
| Windset | Autohelm Wind + VMG |
| Repeater | Autohelm Multi |
| VHF | Std Horizon (2023) + Icom M56 |
| VHF handheld | yes |
| Autopilot | 2 x Autohelm ST7000 |
| Rudder angle indicator | Raytheon |
| Radar | Raytheon R4C |
| GPS | Raymarine GPS |
| Plotter/GPS | Raymarine Axiom (2023) |
| Weather receiver | Furuno DFax |
| AIS transponder | Raymarine |
| Radio receiver | Iridium Go |
| Transmitter | Icom M800 SSB |
| EPIRB | Memurdo Smartfind (2017) |
| Navigation lights | LED |
| Extra info | All equipment is functional |

EQUIPMENT

| | |
|------------------|----------|
| Sprayhood | New 2020 |
| Bimini | New 2020 |
| Cockpit cushions | Partial |
| Cockpit table | Teak |



OYSTER 485 DECK SALOON

| | |
|----------------------------|--------------------------------------|
| Bathing platform | yes |
| Boarding ladder | stainless steel |
| Gangway | Aluminum |
| Deck shower | yes |
| Anchor | Delta |
| Anchor chain | 50 m (13mm) |
| Windlass | electrical Lewmar (new gear & motor) |
| Dinghy | inflatable Avon |
| Outboard | Yanmar |
| Outboard support | yes |
| Davits | stainless steel ED 18/19 GW (130kg) |
| Davits controls | manual |
| Sea railing | wire |
| Grab rail (superstructure) | stainless steel |
| Railing side opening gates | yes |
| Pushpit | yes |
| Pulpit | yes |
| Life raft | valise (or bag) ML Lifeguard |
| Life raft (pers) | 6 |
| Last life raft survey | Needs service |
| Lifebuoy | Ring (2017) |
| Clearview window | yes |
| Horn | air pressure |
| Binocular | yes |
| Fenders | yes |
| Mooring lines | yes |
| Spare parts | yes |
| Tools | yes |
| Radio-cd player | JVC (2013) |
| Cockpit speakers | Fusion (new 2023) |
| Speakers in salon | yes |
| Clock - barometer | yes |



OYSTER 485 DECK SALOON

Fire extinguisher

yes

RIGGING

Rigging

sloop-cutter

Standing rigging

wire Replaced 2015

Brand mast

Z-Spar

Material mast

aluminium coated

Spreaders

2 sets

Keel stepped mast

yes

Mainsail

Lundh Vertecc (2020)

Jib

yes

Genoa I

Lundh Vertech (2020)

Genoa II

Lundh Vertech (2020)

Genoa furler

Furlex

Cutter furler

Furlex

Gennaker

yes

Spinnaker

yes

Removable innerforestay

yes

Reefing System

main in-mast furling

Boomvang

mechanical and tackle

Primary sheet winch

2 x Lewmar ST 2SP 62"

Secondary sheet winch

2 x Lewmar ST 2SP 48"

Halyard winches

2 x Lewmar ST 2SP 40"

Reefing winch

2 x Lewmar ST 2 SP 40" (new 2023)

Winchcovers

yes

Spi-pole

aluminium On mast

Isolated backstay

yes

Extra info

Running rigging in good conditions



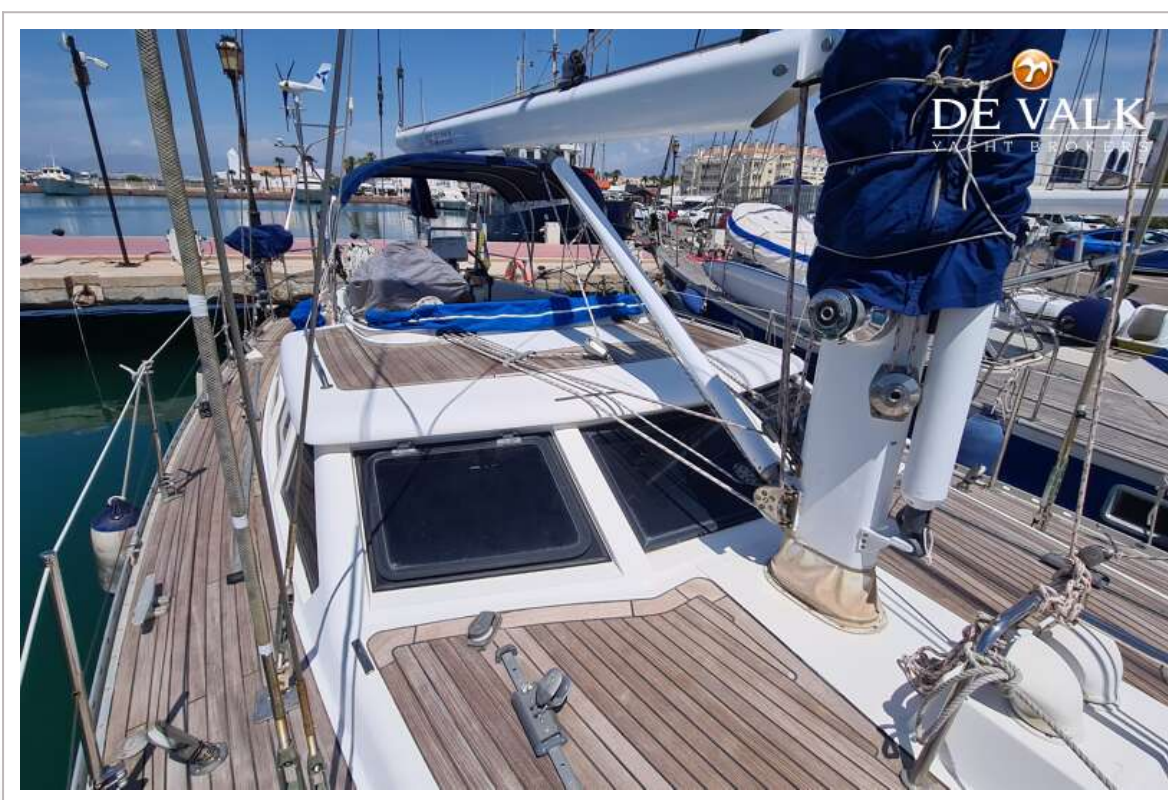
OYSTER 485 DECK SALOON



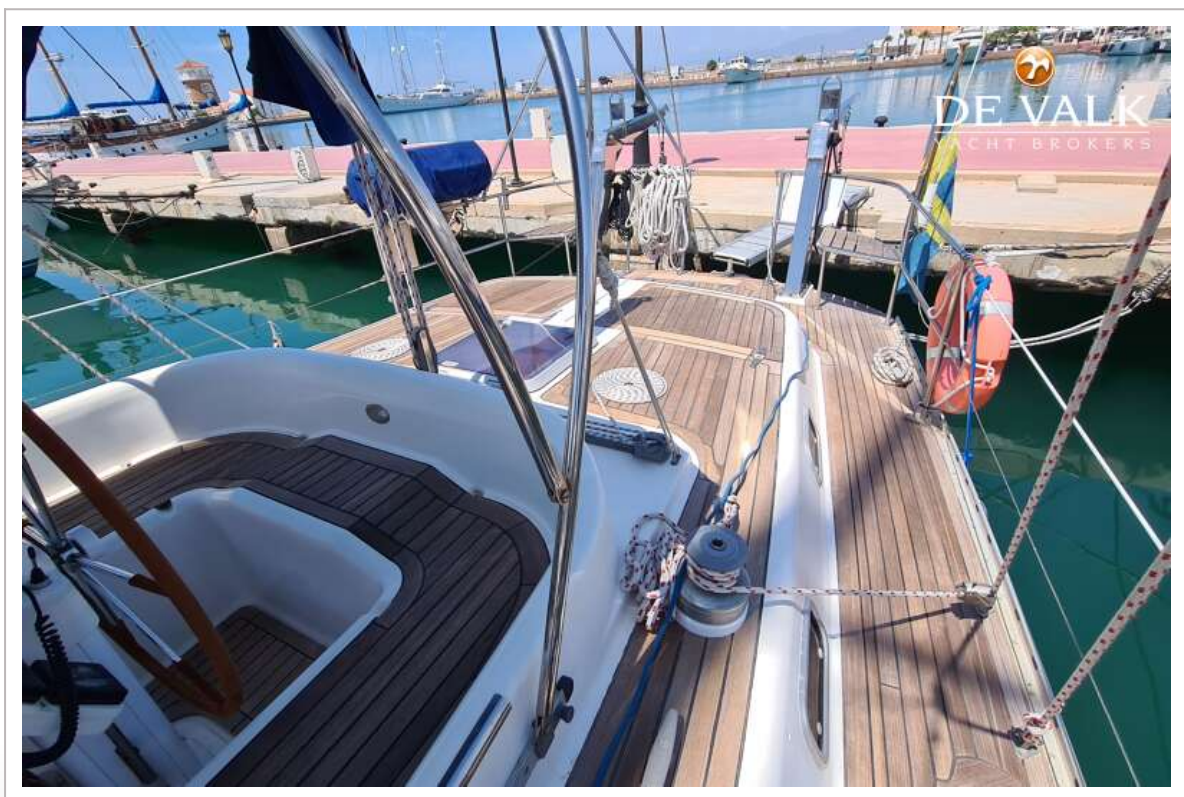
OYSTER 485 DECK SALOON



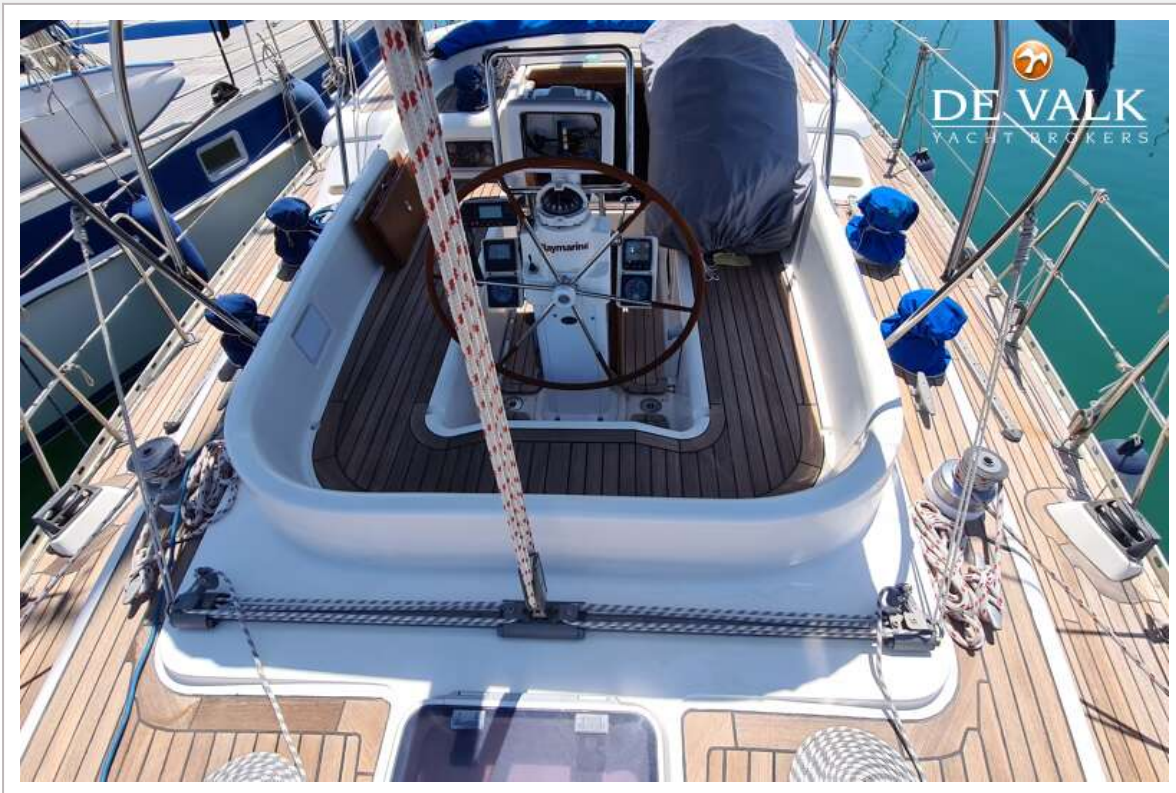
OYSTER 485 DECK SALOON



OYSTER 485 DECK SALOON



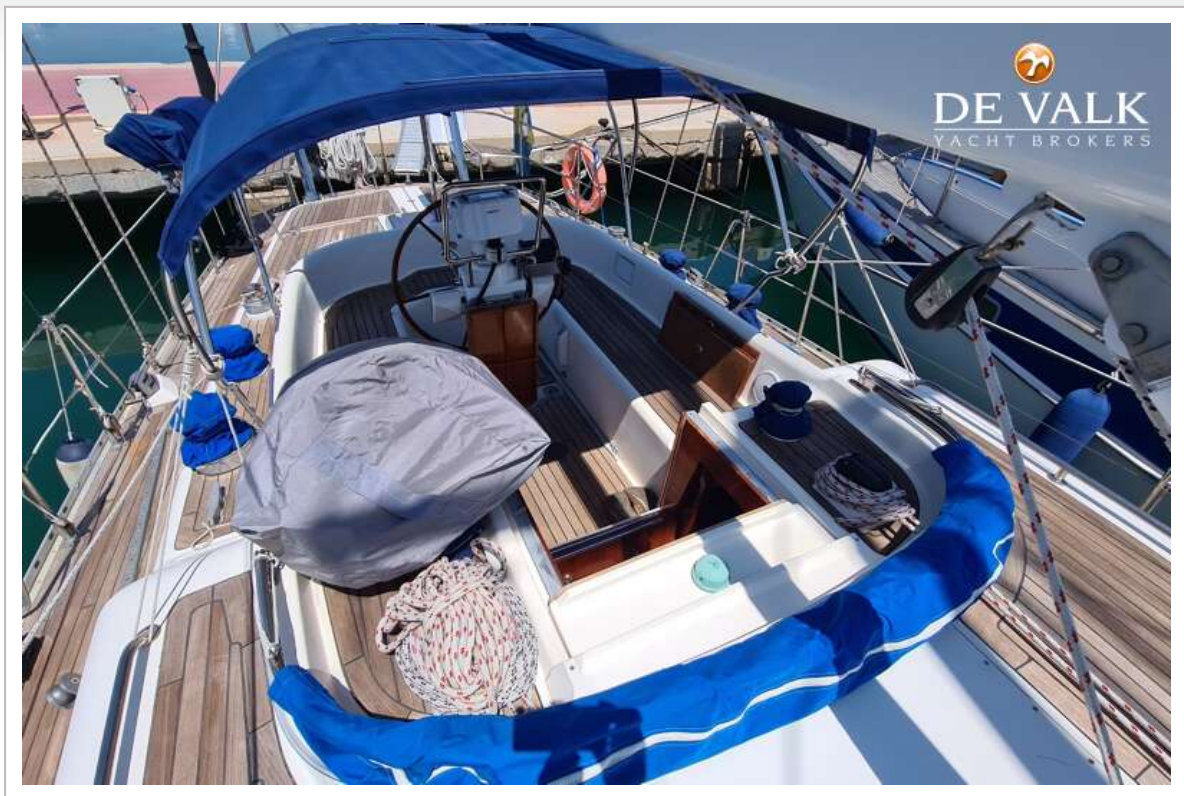
OYSTER 485 DECK SALOON



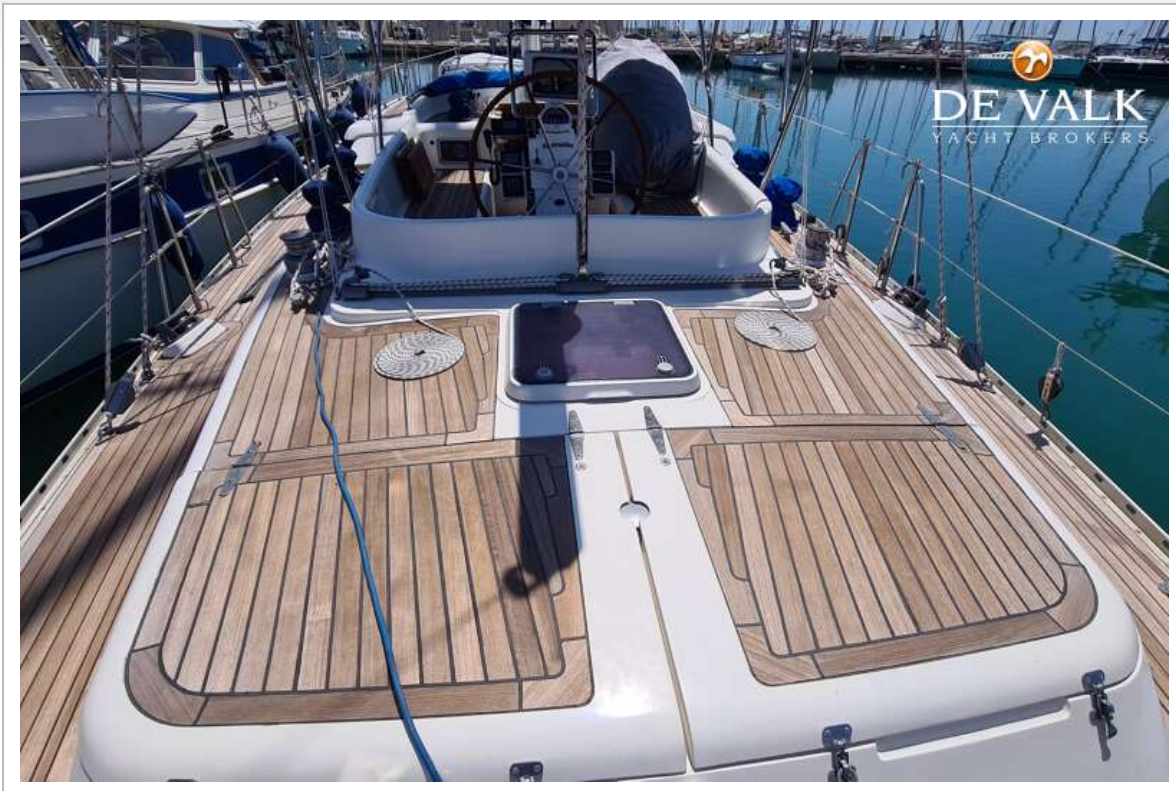
OYSTER 485 DECK SALOON



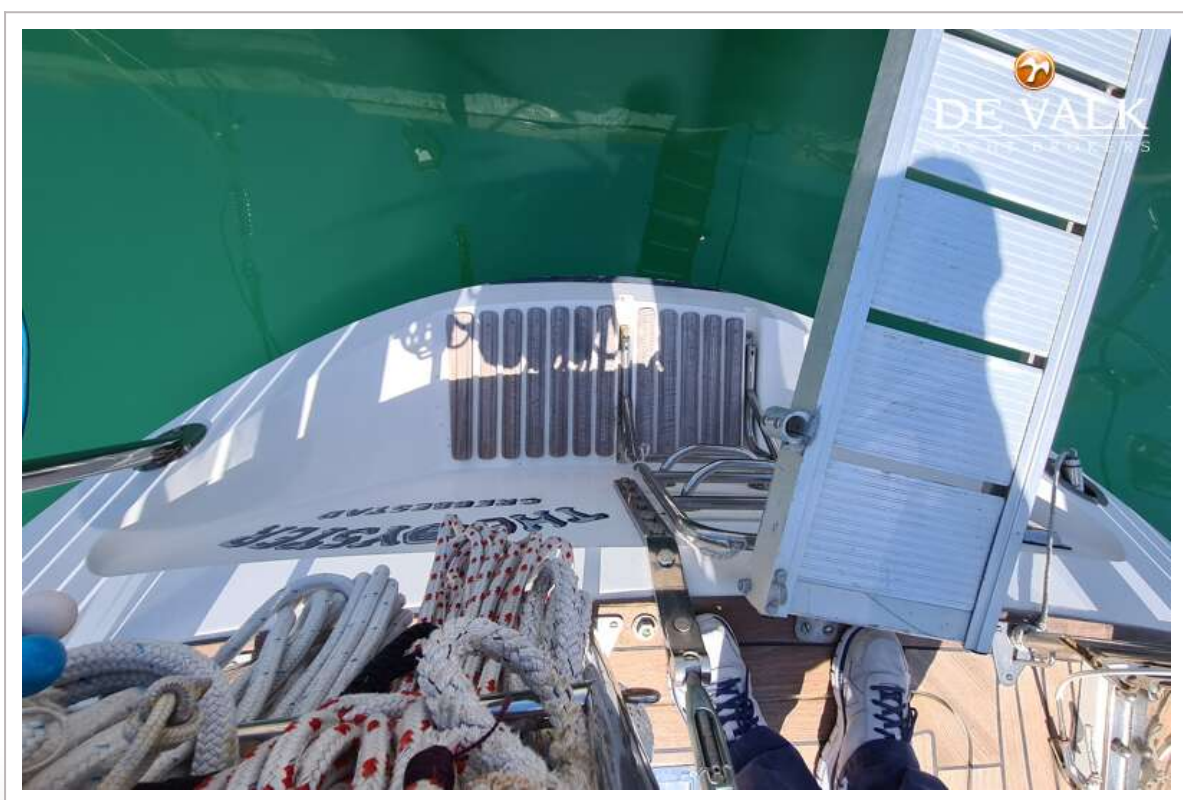
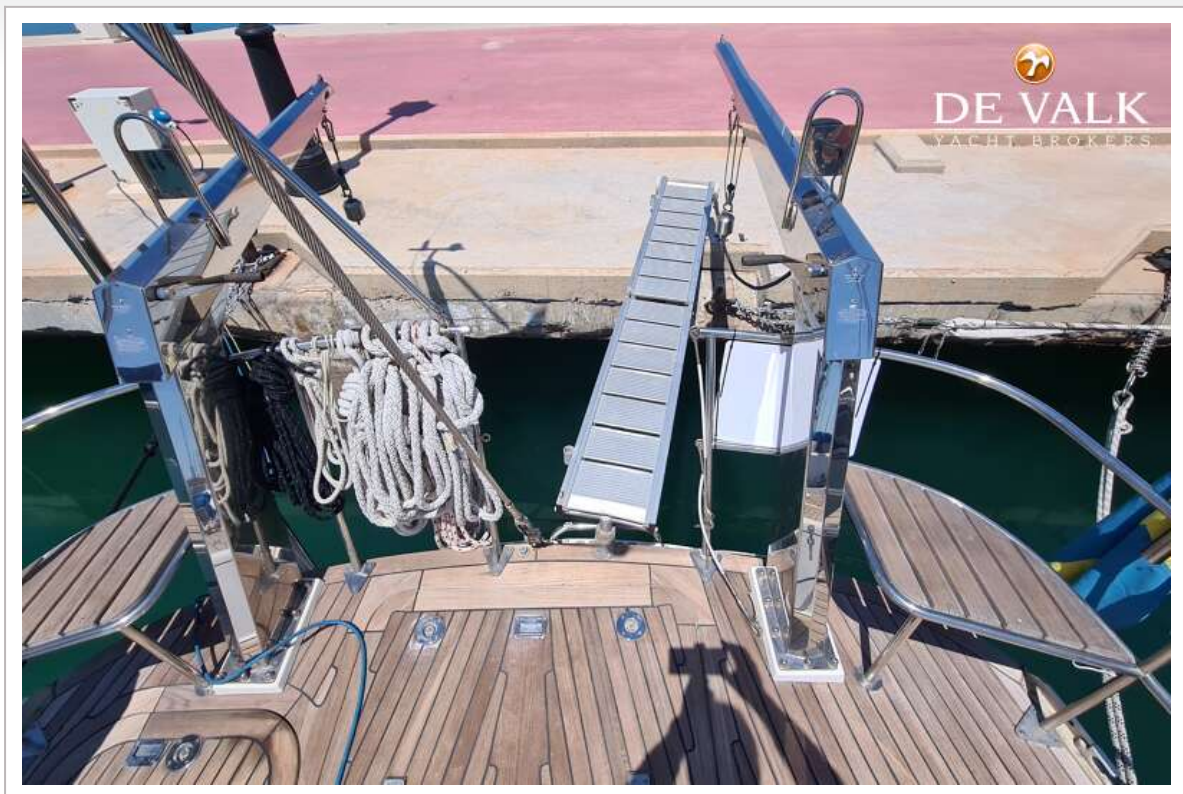
OYSTER 485 DECK SALOON



OYSTER 485 DECK SALOON



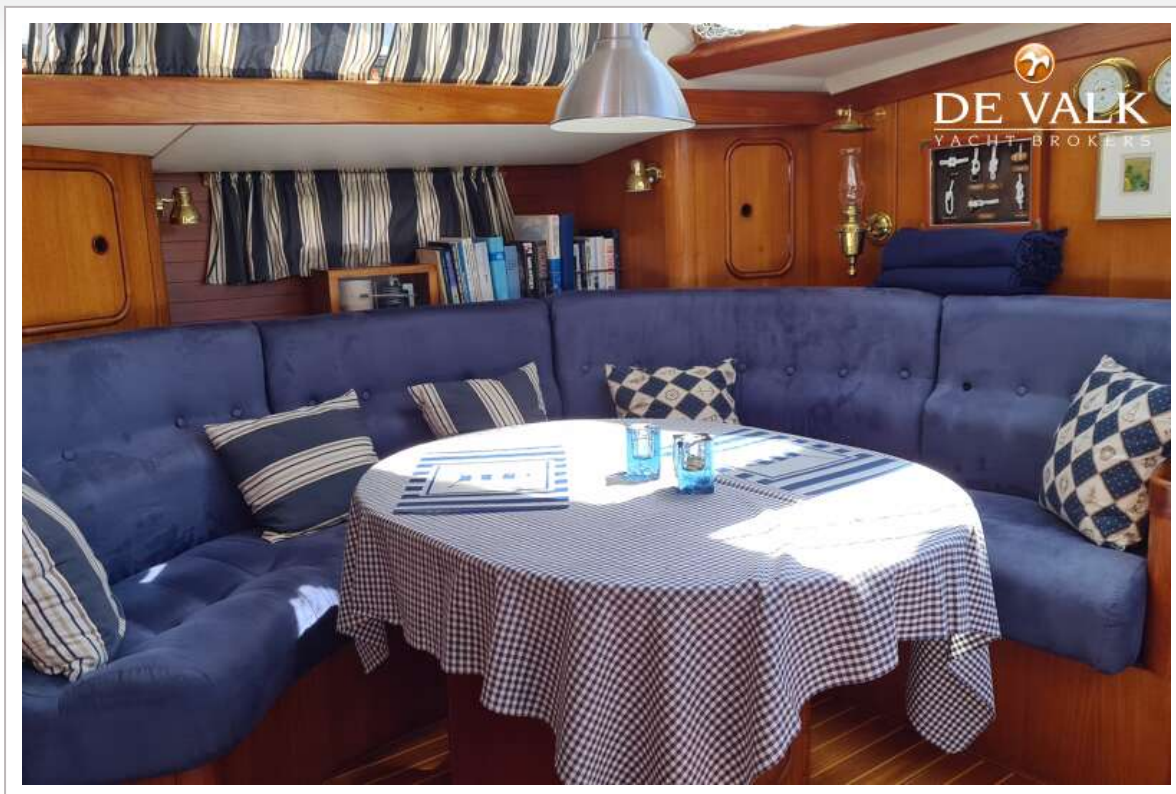
OYSTER 485 DECK SALOON



OYSTER 485 DECK SALOON



OYSTER 485 DECK SALOON



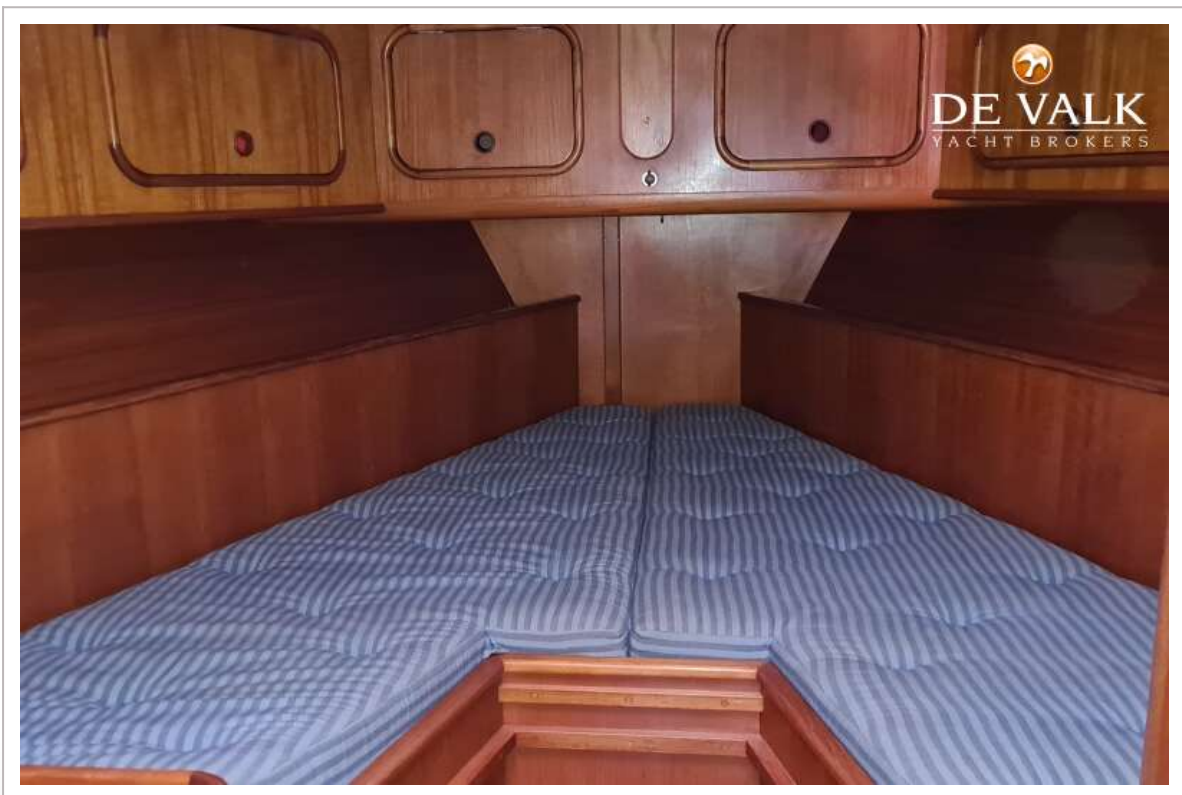
OYSTER 485 DECK SALOON



OYSTER 485 DECK SALOON



OYSTER 485 DECK SALOON



OYSTER 485 DECK SALOON



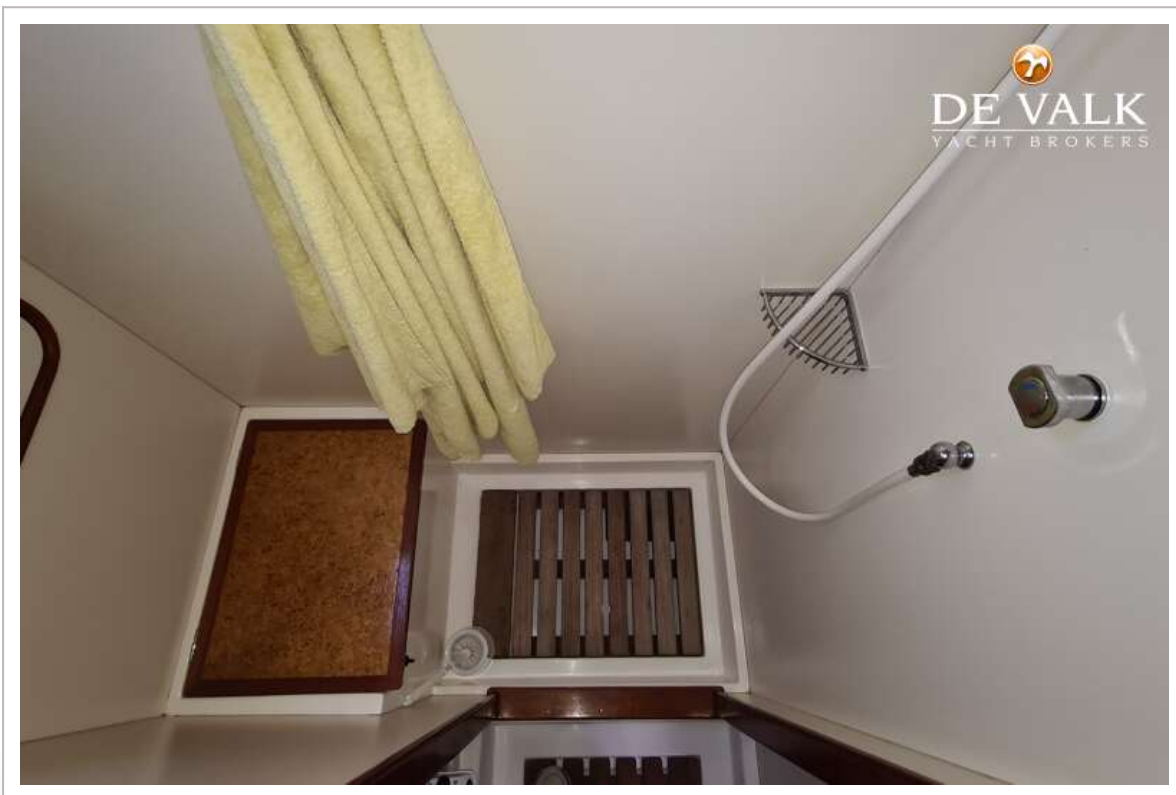
OYSTER 485 DECK SALOON



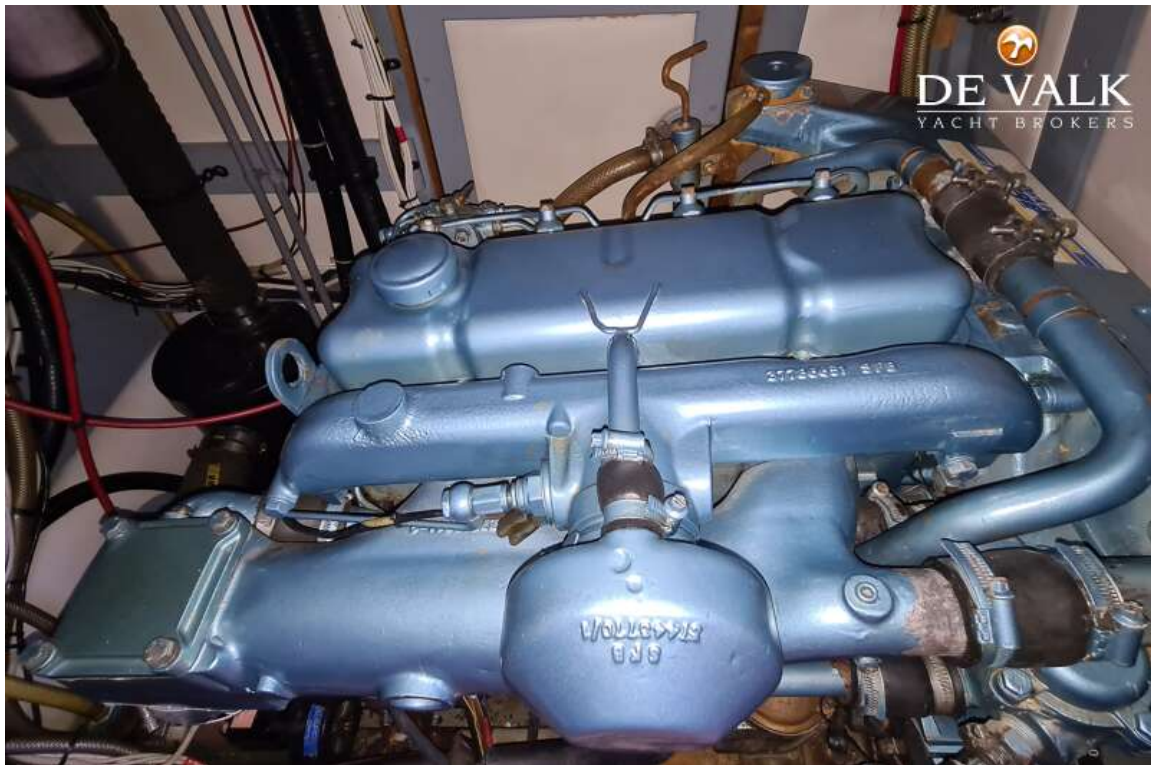
OYSTER 485 DECK SALOON



OYSTER 485 DECK SALOON



OYSTER 485 DECK SALOON



OYSTER 485 DECK SALOON

