



DE VALK  
YACHT BROKERS



LUXE MOTOR 14.95



DE VALK  
YACHT BROKERS

# LUXE MOTOR 14.95

## BROKER'S COMMENTS

Nice Luxe Motor 14.95 named "Tabaluga", originally built by Shipyard Bijlsma. Around 1988 this Luxe Motor 14.95 received a complete refit, both technically and cosmetically. Furthermore, the underwater hull was doubled in 2015 and the covered aft deck was installed. Technically, the "Tabaluga" is powered by a reliable and economical Daf 575 Engine. Are you looking for a motor yacht to stay on for a long time or even permanent residence? Then make an appointment soon to view this special Luxury Motor 14.95.

*Jochem Heijermans*

## SPECIFICATIONS

<b>Dimensions</b>	14.95 x 3.00 x 0.95 (m)	<b>Builder</b>	Scheepswerf Bijlsma
<b>Built</b>	1927	<b>Cabins</b>	1
<b>Material</b>	Steel	<b>Berths</b>	4
<b>Engine(s)</b>	1 x Daf 575 diesel	<b>Hp/Kw</b>	120.00 (hp), 88.32 (kw)
<b>Asking price</b>	€ 82.500 (VAT Exempt)	<b>Lying</b>	elsewhere / Not at sales office

## CONTACT

<b>Sales office</b>	De Valk Belgium	<b>Telephone</b>	+3258680218
<b>Address</b>	1401 PT Nieuwpoort Belgium	<b>E-mail</b>	belgium@devalk.nl

## DISCLAIMER

These particulars are given in good faith as supplied but cannot be guaranteed.



# LUXE MOTOR 14.95

## GENERAL

<b>Model</b>	LUXE MOTOR 14.95
<b>Type</b>	motor yacht
<b>LOA (m)</b>	14,95
<b>Beam (m)</b>	3,00
<b>Draft (m)</b>	0,95
<b>Headroom (m)</b>	1,95
<b>Year built</b>	1927
<b>Builder</b>	Scheepswerf Bijlsma
<b>Country</b>	The Netherlands
<b>Displacement (t)</b>	25
<b>Hull material</b>	steel
<b>Hull colour</b>	blue
<b>Hull thickness (mm)</b>	10
<b>Hull shape</b>	flat bottom
<b>Superstructure material</b>	steel
<b>Rubbing strake</b>	steel
<b>Deck material</b>	steel
<b>Deck finish</b>	paint
<b>Superstructure deck finish</b>	paint
<b>Cockpit deck finish</b>	paint
<b>Window frame</b>	wood
<b>Window material</b>	double glazing
<b>Fuel tank (litre)</b>	stainless steel 2x 415
<b>Level indicator (fuel tank)</b>	yes
<b>Freshwater tank (litre)</b>	steel 2x 615
<b>Level indicator (freshwater)</b>	yes
<b>Wheel steering</b>	hydraulic
<b>Inside helm position</b>	yes
<b>More info on hull</b>	Underwatership doubled by additional 8mm
<b>Extra info</b>	Covered aft deck (2015)



# LUXE MOTOR 14.95

## ACCOMMODATION

Cabins	1
Berths	4
Floor	wood
Saloon	yes
Headroom saloon (m)	1,95
Heating	electric 220V
Galley	yes
Countertop	wood
Sink	stainless steel
Cooker	ceramic Siemens
Microwave/oven combi	Siemens
Fridge	yes
Hot water system	220V + engine
Water pressure system	electrical
Owners cabin	double bed
Wardrobe	hanging and shelves
Bathroom	shared
Toilet	shared
Toilet system	chemical
Wash basin	in the bathroom
Shower	shared

## MACHINERY

No of engines	1
Make	Daf
Type	575
HP	120
kW	88.32
Fuel	diesel
Year installed	1986



# LUXE MOTOR 14.95

Maximum speed (kn)	7
Cruising speed (kn)	6
Engine hours	1120
Engine cooling system	closed keelcooling
Drive	shaft
Engine controls	electrical
Gearbox	hydraulic
Bowthruster	electric
Exhaust	dry
Shaft lubrication	grease
Electric bilge pump	yes
Electrical installation	24V/220V
Generator	Honda generator loose
Start battery	2x 170Ah
Service battery	4x 170Ah (2021)
Bowthruster battery	2x
Battery charger	yes
Inverter	yes
Shorepower	with cable

## NAVIGATION

Depth sounder	Lowrance
VHF	yes
Navigation lights	yes
Searchlight	yes

## EQUIPMENT

Fixed windscreen	yes
Cockpit cover	(2015)
Cockpit cushions	yes
Cockpit table	yes



# LUXE MOTOR 14.95

Cockpit chairs	yes
Anchor	yes
Windlass	manual
Wiper	yes
Horn	electric
Fenders	yes
Mooring lines	yes



# LUXE MOTOR 14.95

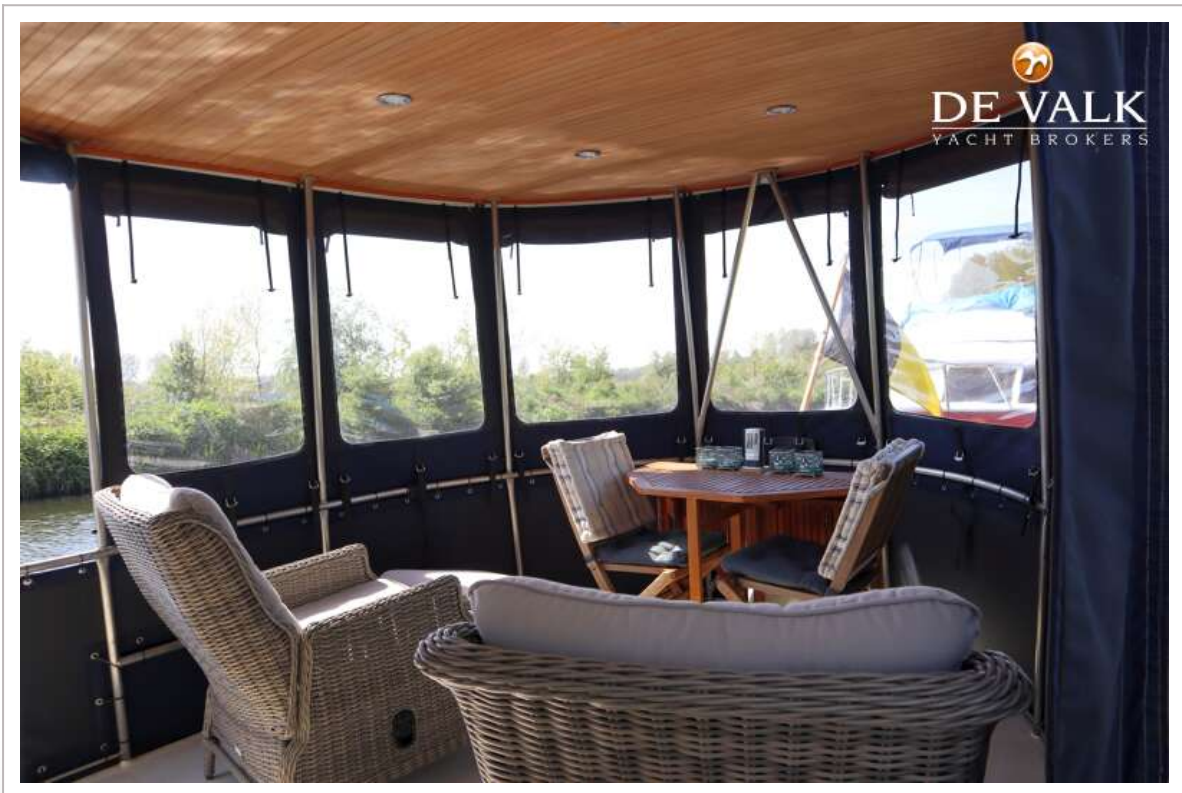


# LUXE MOTOR 14.95

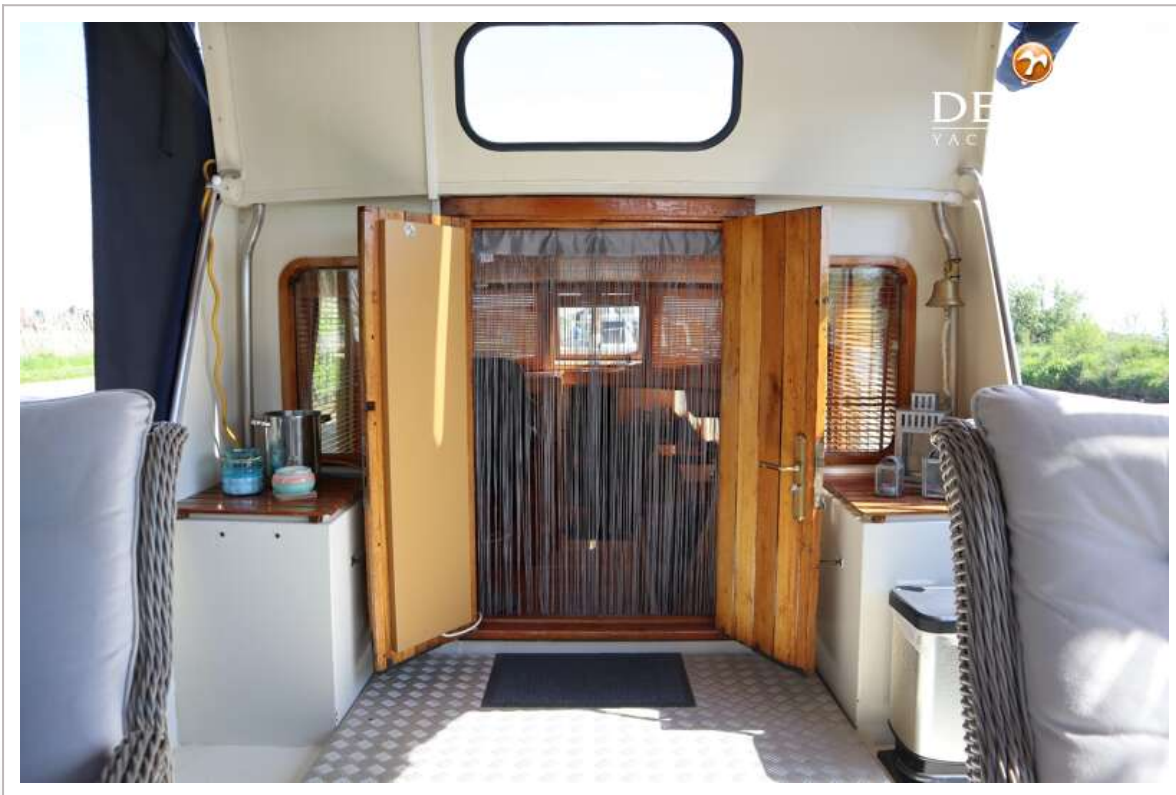
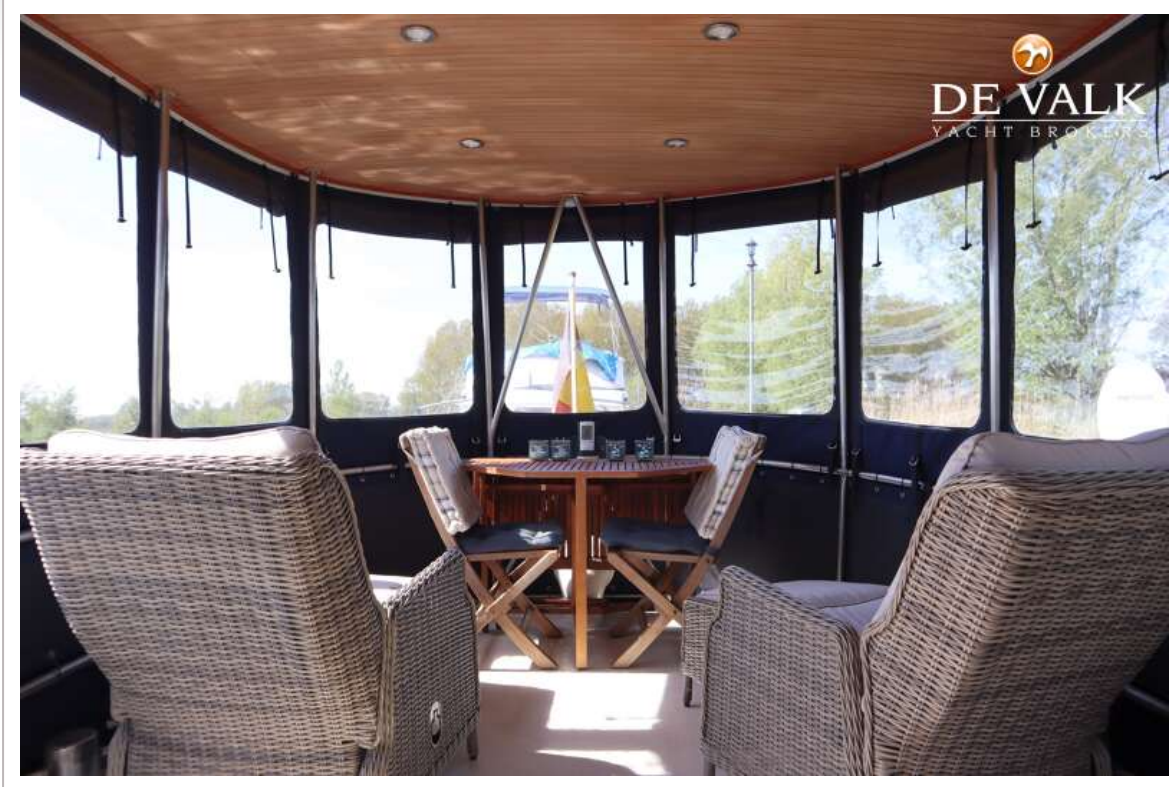




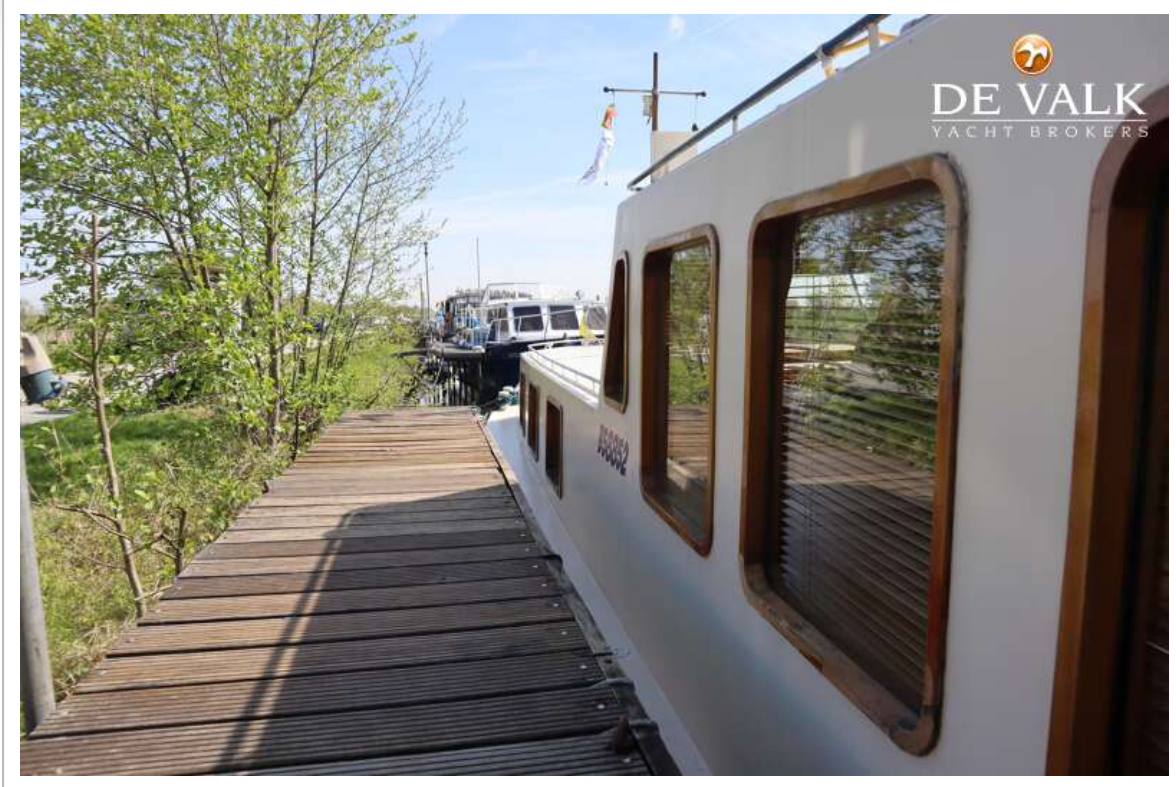
# LUXE MOTOR 14.95



# LUXE MOTOR 14.95



# LUXE MOTOR 14.95



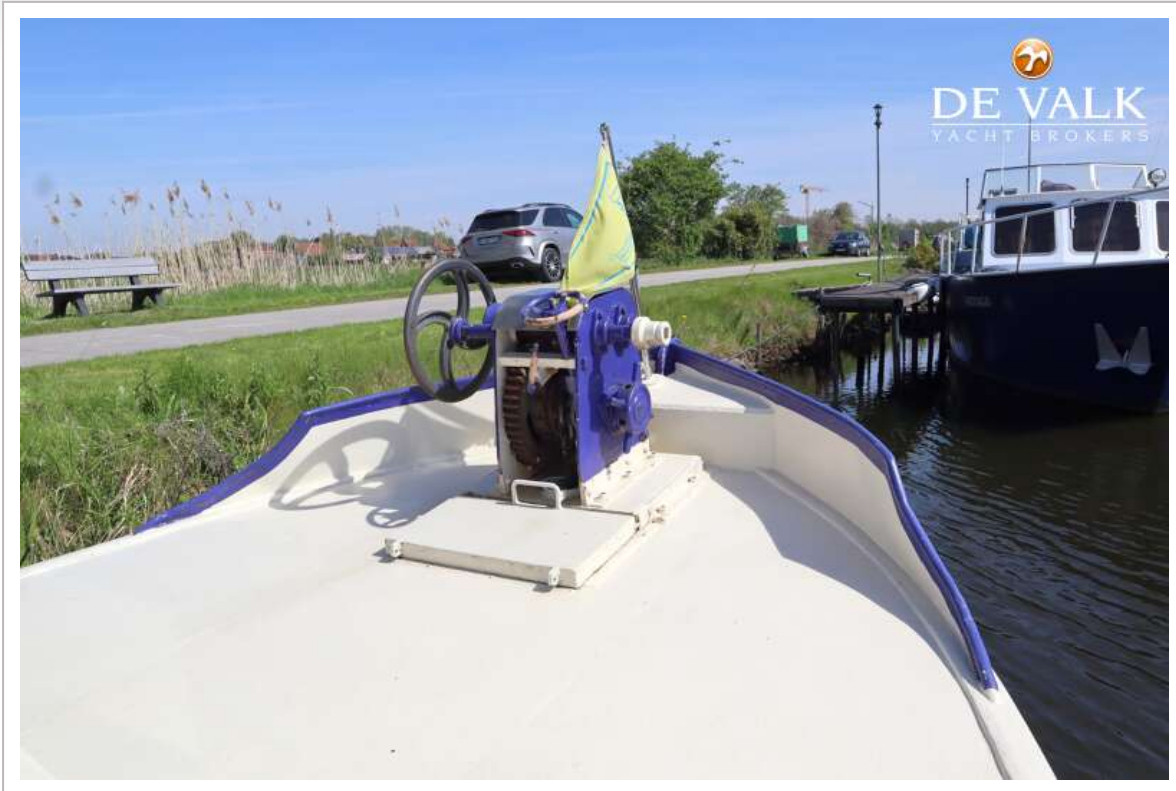
# LUXE MOTOR 14.95



# LUXE MOTOR 14.95



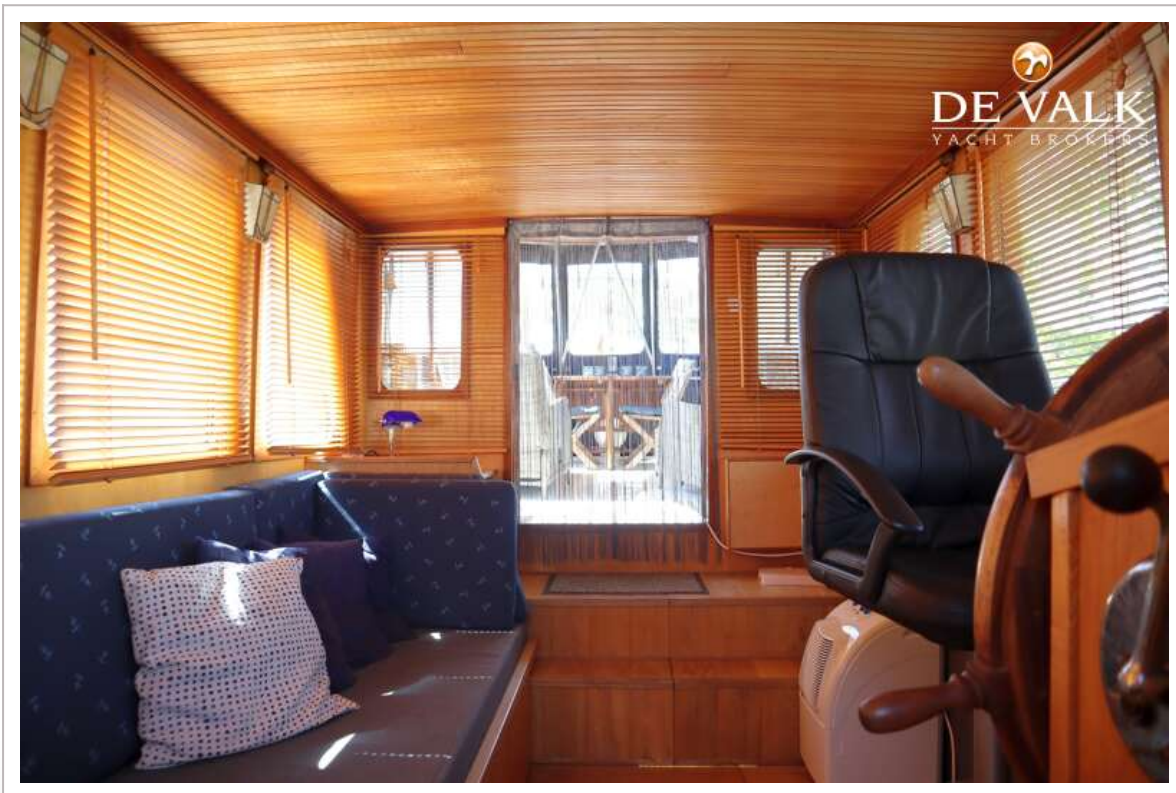
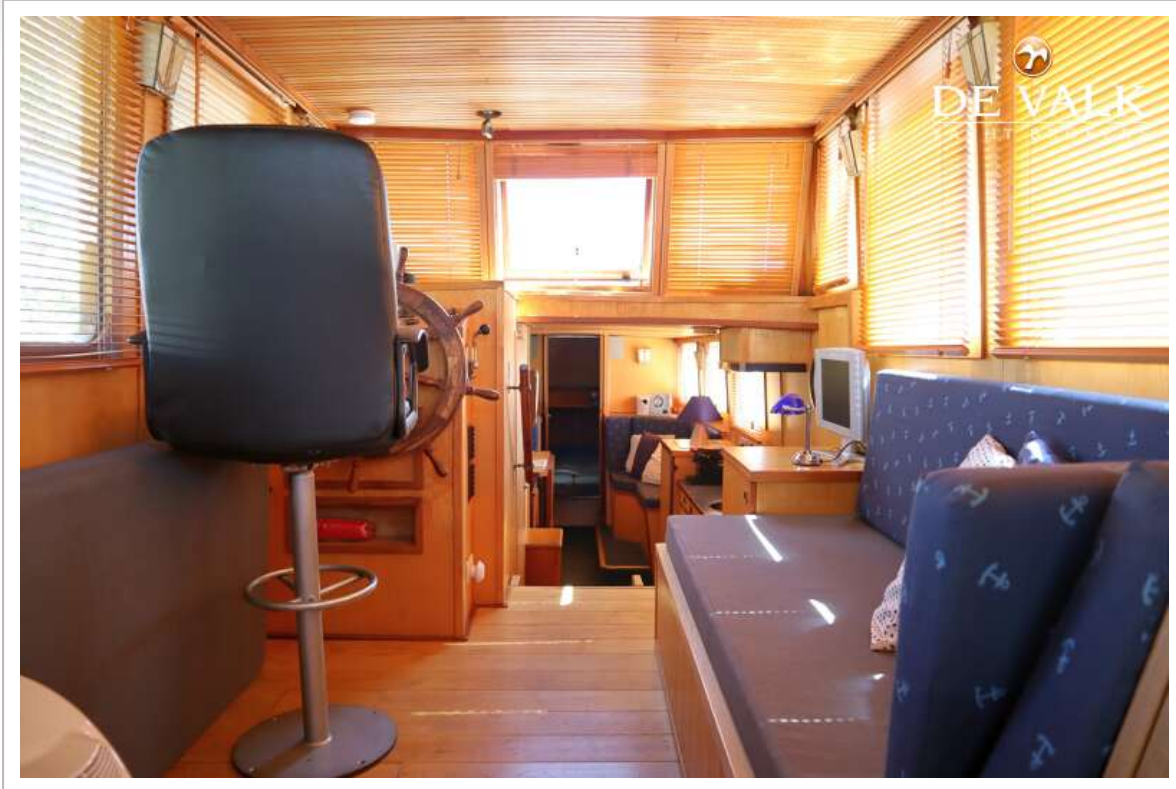
# LUXE MOTOR 14.95



# LUXE MOTOR 14.95

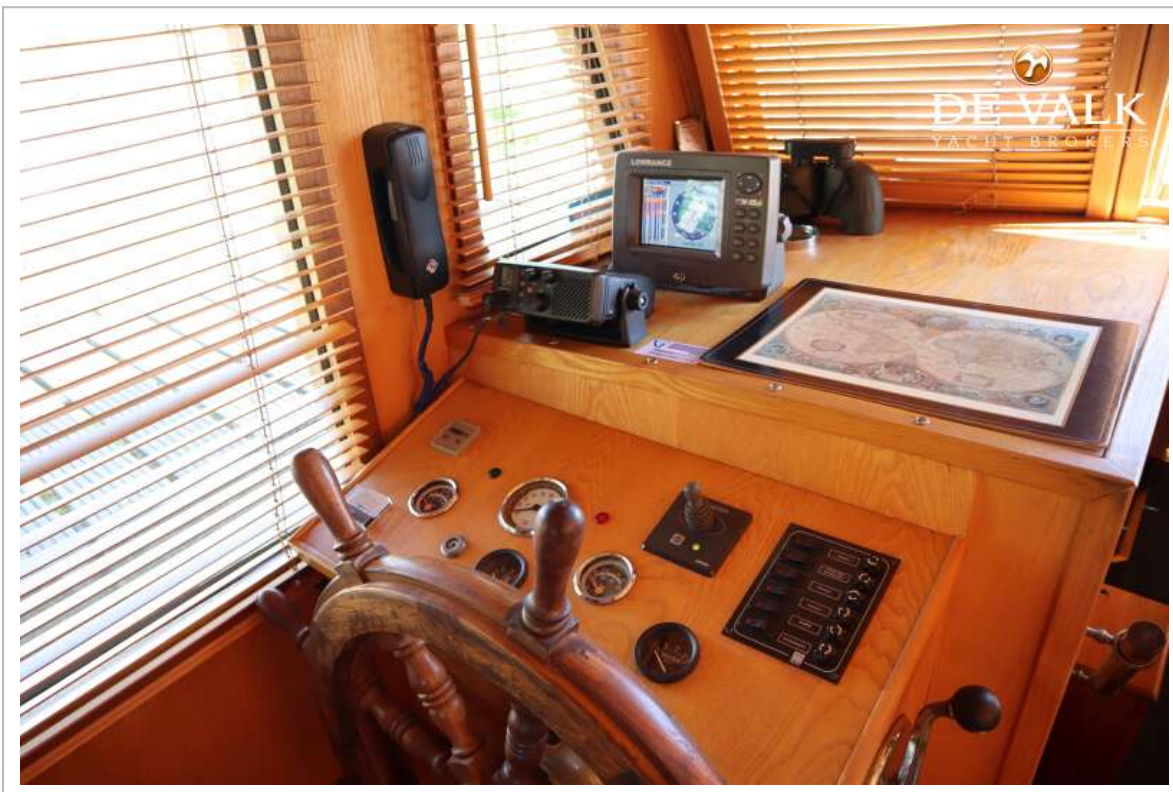


# LUXE MOTOR 14.95

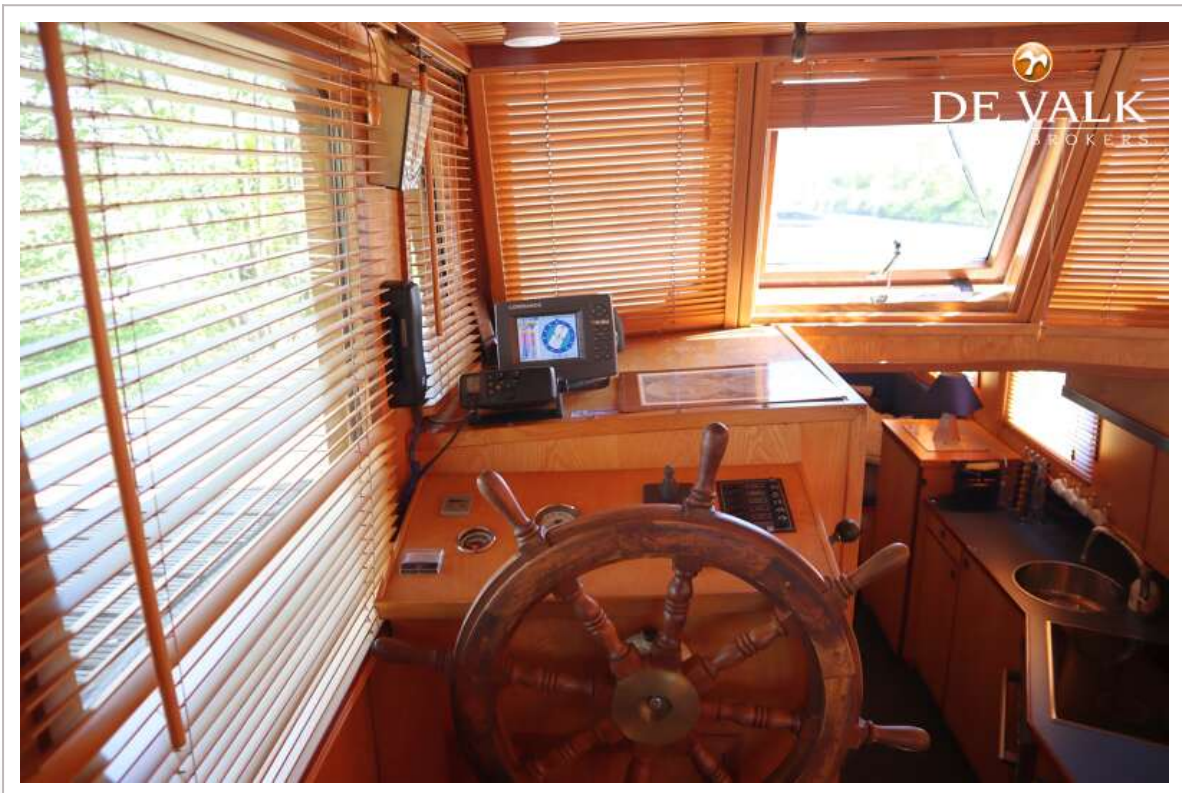




# LUXE MOTOR 14.95



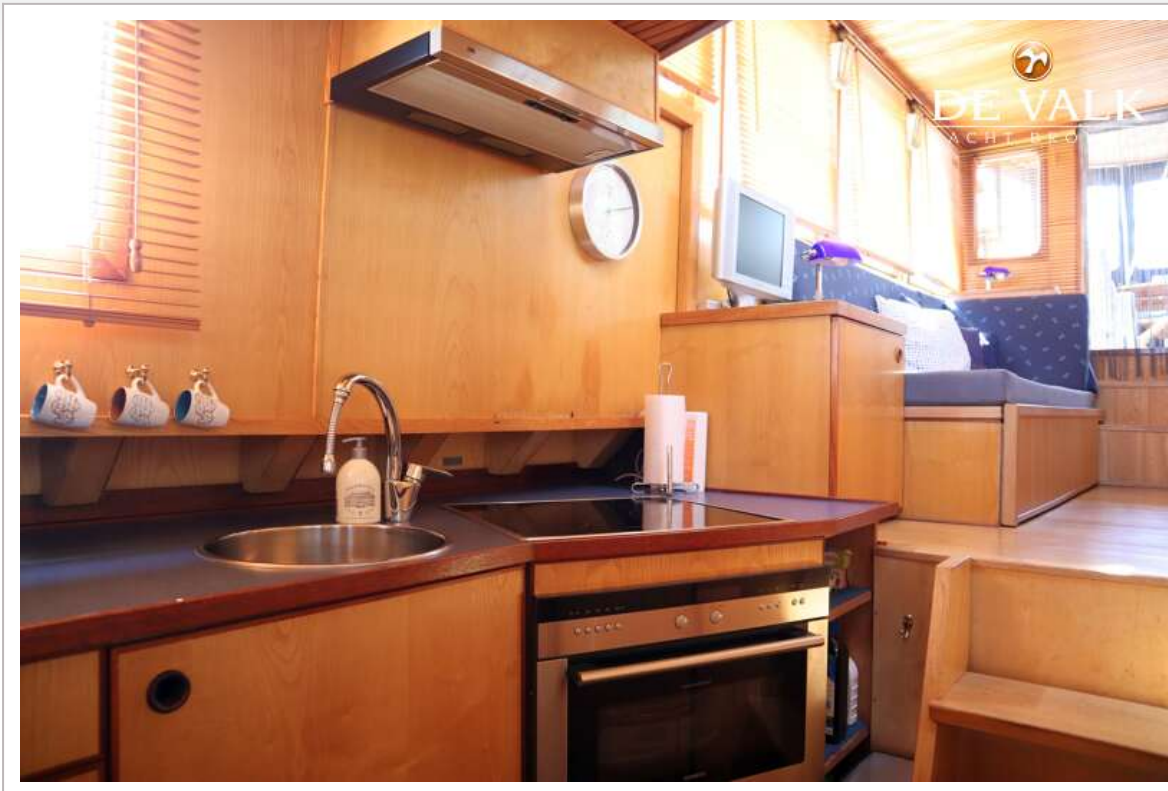
# LUXE MOTOR 14.95



# LUXE MOTOR 14.95



# LUXE MOTOR 14.95



# LUXE MOTOR 14.95



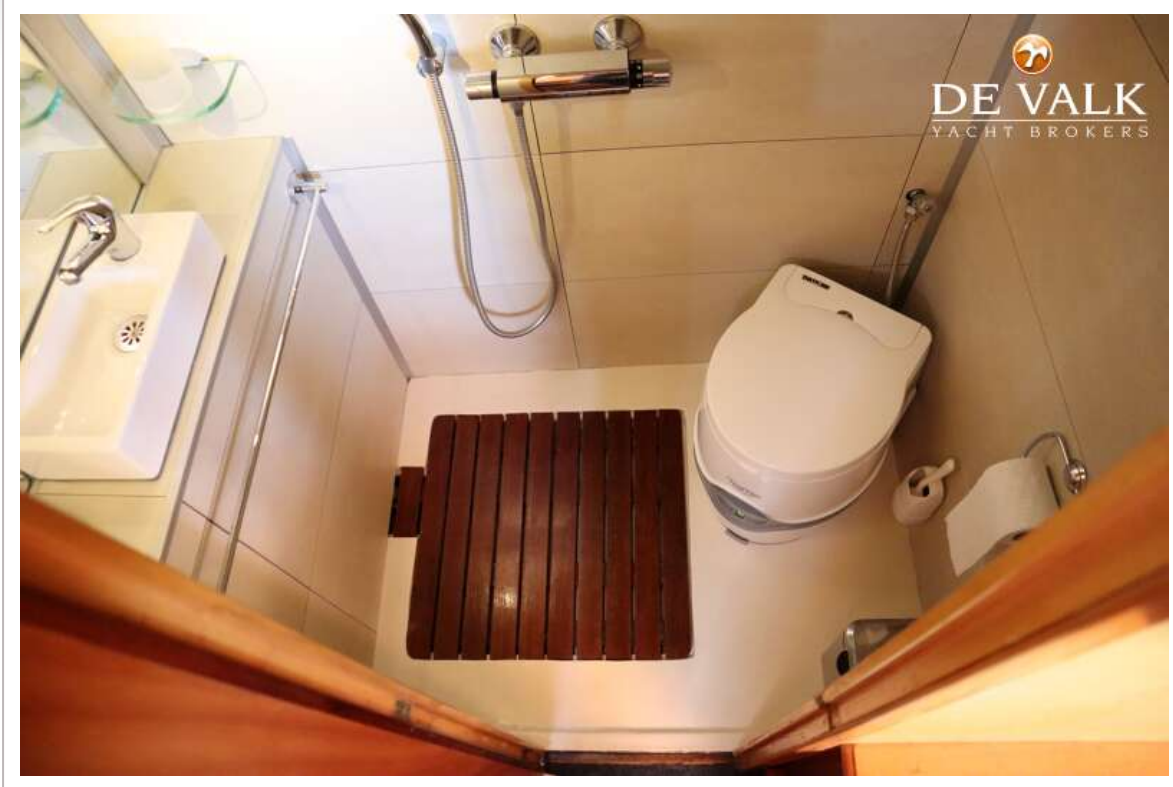
# LUXE MOTOR 14.95



# LUXE MOTOR 14.95

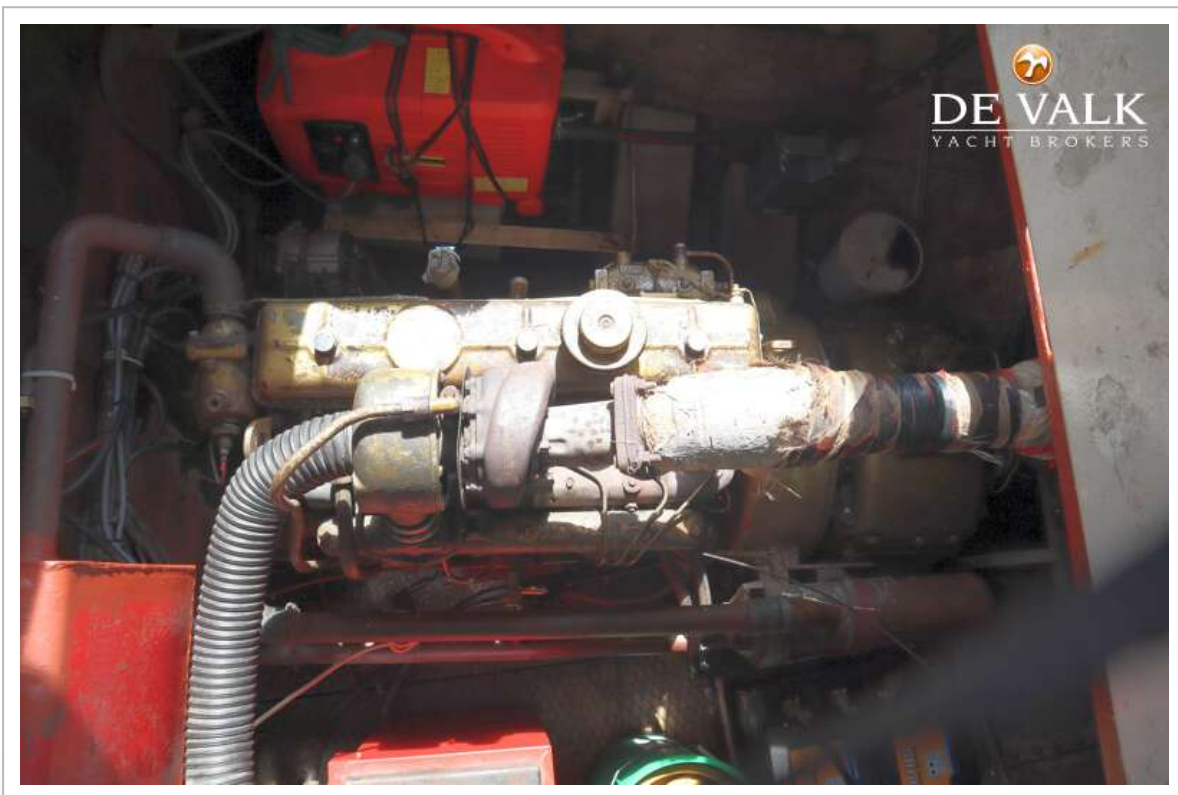


# LUXE MOTOR 14.95





# LUXE MOTOR 14.95



# LUXE MOTOR 14.95

