



DE VALK
YACHT BROKERS



HANSE 315



DE VALK
YACHT BROKERS

BROKERAGE | CHARTER | BERTHS | FINANCE | INSURANCE | YACHT MANAGEMENT

BROKER'S COMMENTS

The Hanse 315 is a sporty and compact cruiser yachts and offers a lot of space, comfort and a powerful 30 HP engine. If you look careful at the specifications & equipment list you will find a unique wel fitted yacht. This Hanse 315 represents a popular beautiful well maintained high performing short handed sailing yacht.

Hans Visser

SPECIFICATIONS

Dimensions	9.45 x 3.20 x 1.75 (m)	Builder	Hanse yachts AG
Built	2007	Cabins	2
Material	GRP	Berths	4
Engine(s)	1 x Yanmar 3YM30 diesel	Hp/Kw	30.00 (hp), 22.08 (kw)
Asking price	sold (VAT)	Lying	at sales office

CONTACT

Sales office	De Valk Hindeloopen B.V.	Telephone	+31 514 52 40 00
Address	Oosterstrand 1 8713 JS Hindeloopen NL	E-mail	hindeloopen@devalk.nl

DISCLAIMER

These particulars are given in good faith as supplied but cannot be guaranteed.



GENERAL

Model	HANSE 315
Type	sailing yacht
LOA (m)	9,45
LWL (m)	8,30
Beam (m)	3,20
Draft (m)	1,75
Air draft (m)	14,75
Headroom (m)	1,75
Year built	2007
Builder	Hanse yachts AG
Country	Germany
Designer	Judel & Vrolijk & co
Displacement (t)	3,9
Ballast (tonnes)	cast iron 1,3
CE norm	A
Hull material	GRP
Hull colour	white
Hull shape	round-bilged
Keel type	fin keel
Superstructure material	GRP
Rubbing strake	wood
Deck material	GRP
Deck finish	non-skid moulded in
Superstructure deck finish	non-skid moulded in
Cockpit deck finish	teak
Antifouling (year)	2022 Hempel Mile NCT
Window frame	aluminium
Window material	polycarbonate
Deckhatch	4x with cover
Portholes	yes



Fuel tank (litre)	stainless steel 50 ltr.
Level indicator (fuel tank)	VDO
Freshwater tank (litre)	polyethylene 120 ltr.
Level indicator (freshwater)	VDO
Blackwater tank (litre)	stainless steel 30 ltr.
Blackwater tank extraction	deck extraction + uw line
Outside helm position	yes
Tiller	yes

ACCOMMODATION

Cabins	2
Berths	4
Interior	mahogany
Layout	2-cabin version with large bathroom and plenty of living space. Black leather
Open cockpit	yes
Saloon	yes
Headroom saloon (m)	1,90 mtr.
Heating	diesel ducted hot air Eberspächer
Chart table	yes
Aft Cabin	1x
Opening door to cockpit	yes
Galley	yes
Countertop	Duropol
Sink	stainless steel Double
Cooker	calor gas 2 burner Techimpex
Oven	Stainless steel integrated with cooker
Fridge	Isotherm Compact
Hot water system	220V + engine boiler
Water pressure system	electrical
Owners cabin	double bed aft cabin



Wardrobe	hanging and shelves
Bathroom	shared
Toilet	shared
Toilet system	manual Jabsco
Wash basin	yes
Shower	yes
Guest cabin 1	double bed forward cabin
Wardrobe	hanging and shelves

MACHINERY

No of engines	1
Make	Yanmar
Type	3YM30
HP	30
kW	22.08
Fuel	diesel
Maximum speed (kn)	7
Cruising speed (kn)	5
Consumption (l/hr)	2
Engine hours	800
Engine cooling system	freshwater heat exchanger
Drive	sail-drive
Saildrive seal	2021 renewed
Engine controls	bowden cable
Gearbox	mechanical
Exhaust	watercooled
Electric bilge pump	yes
Bilge alarm	yes
Electrical installation	12 / 220 volt
Start battery	1x Exide 70ah
Service battery	1x Mastervolt Li ion



NAVIGATION

Compass	Plastimo Contest 130
Electric compass	B & G
Multi control display	2 x B & G
Depth sounder/log	B & G
Windset	B & G
VHF	Simrad
Plotter	B & G Zeus
Weather receiver	Fastnet radio FMD GMDSS marine decoder (no longer in service)
Extra info	Weather station TFA

EQUIPMENT

Sprayhood with grab rail	yes
Cockpit cushions	yes
Boarding ladder	yes
Anchor	Brittany
Anchor chain	5 meter with line
Sea railing	yes
Pushpit	yes
Pulpit	yes
Life raft	container Plastimo DFstde99x
Life raft (pers)	container 6
Last life raft survey	Due in 06-2025
Window ventilator	In door for contues forced ventilation on board
Fenders	yes
Mooring lines	yes
Clock - barometer	yes
Fire extinguisher	yes

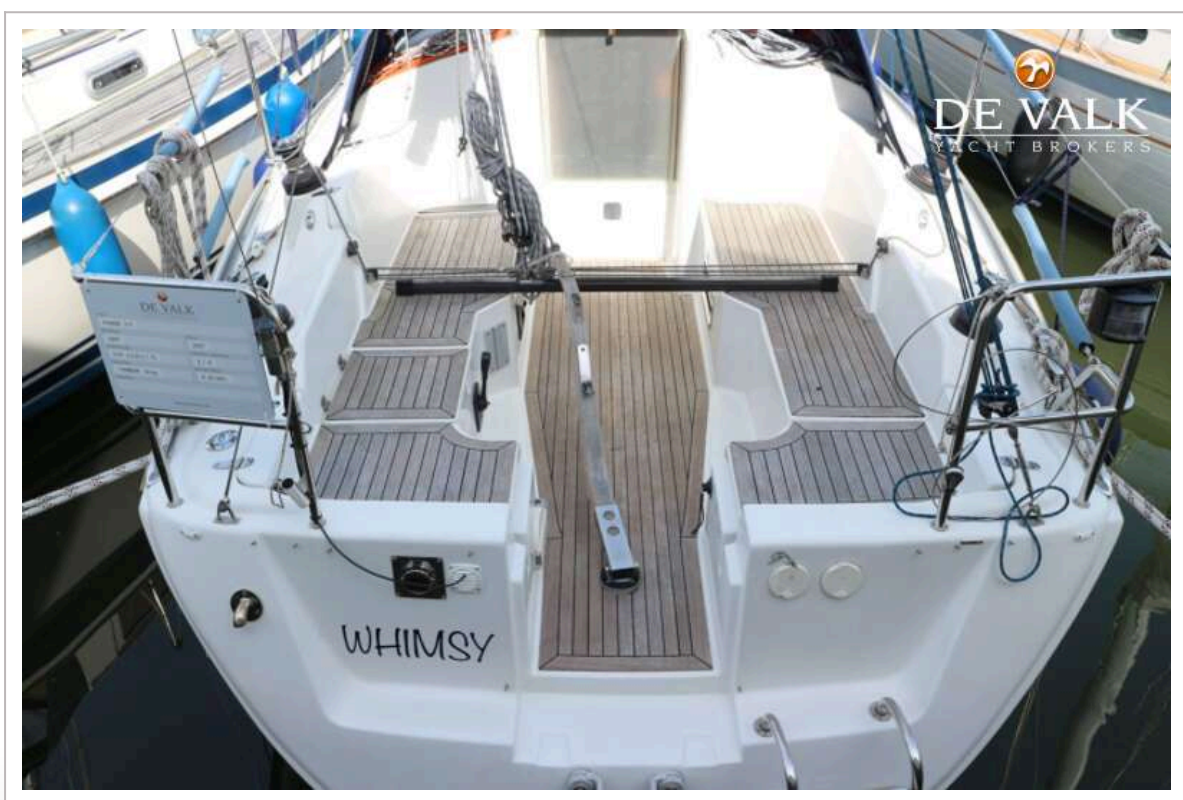
RIGGING



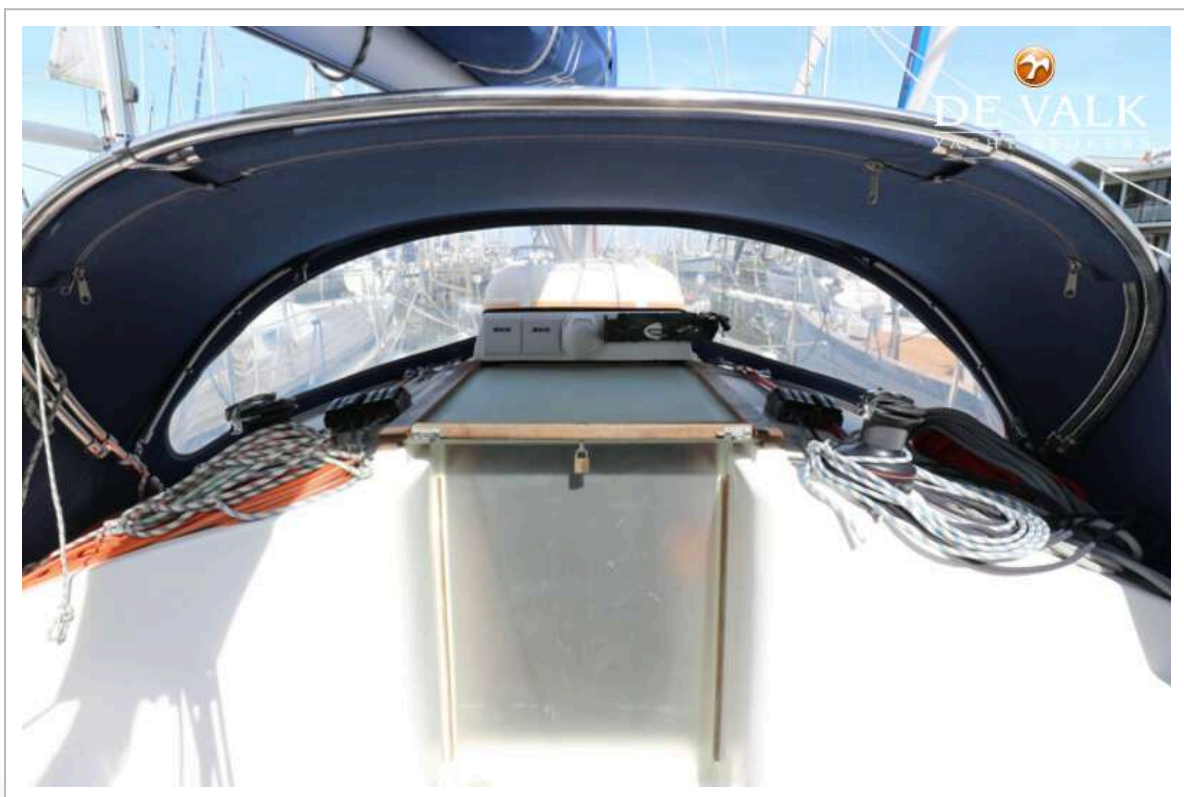
Rigging	sloop 9/10
Standing rigging	wire
Brand mast	Z-Spar RedLabel
Material mast	aluminium
Spreaders	2 sets of swept aft
Mainsail	yes
Mainsail cover	yes
Fully battened mainsail	27,5 m2
Jib	Selftacking 16 m2
Genoa furler	Furlex 200S
Genoa cover	yes
Self tacking jib installation	yes
Reefing System	quick-one-line-reefing
Backstay adjuster	tackle
Boomvang	gasspring
Secondary sheet winch	2x Harken 2 speed 32
Genoa sheetwinches	2x Harken 2 speed 40
Halyard winches	2x Harken 2 speed 32



HANSE 315



HANSE 315



HANSE 315



HANSE 315



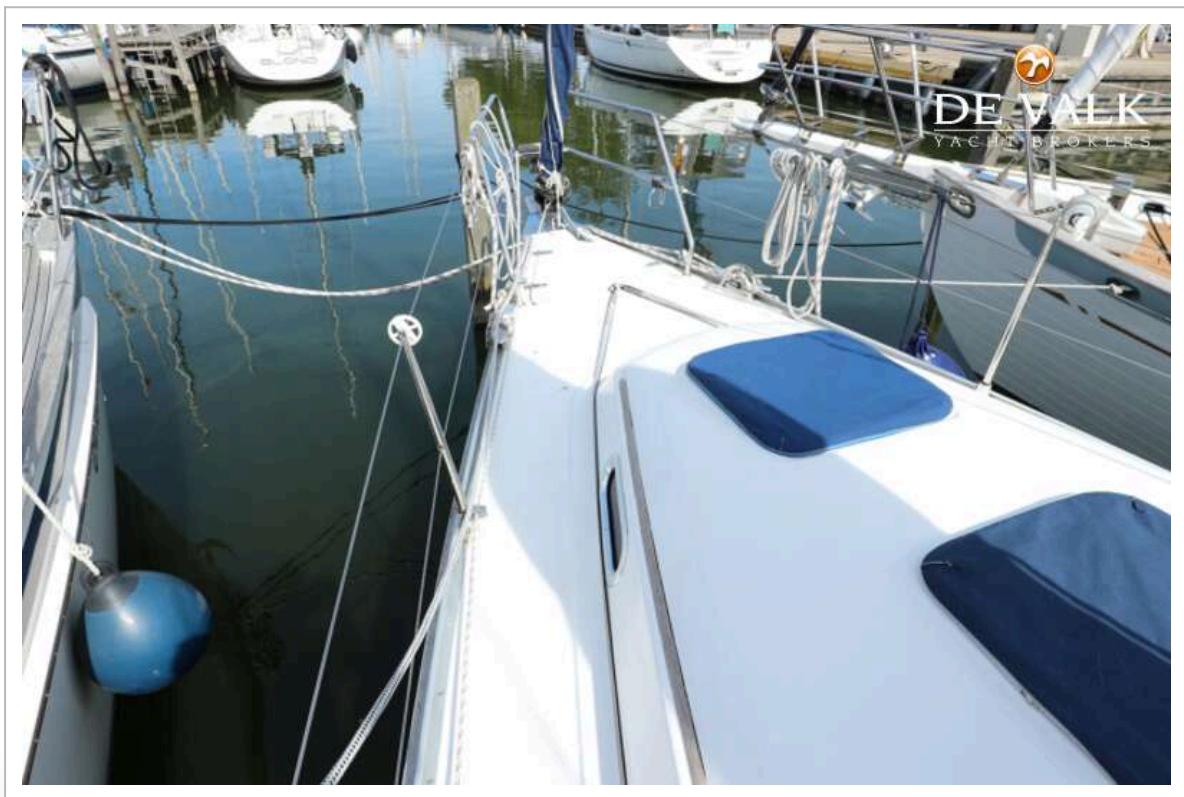
HANSE 315



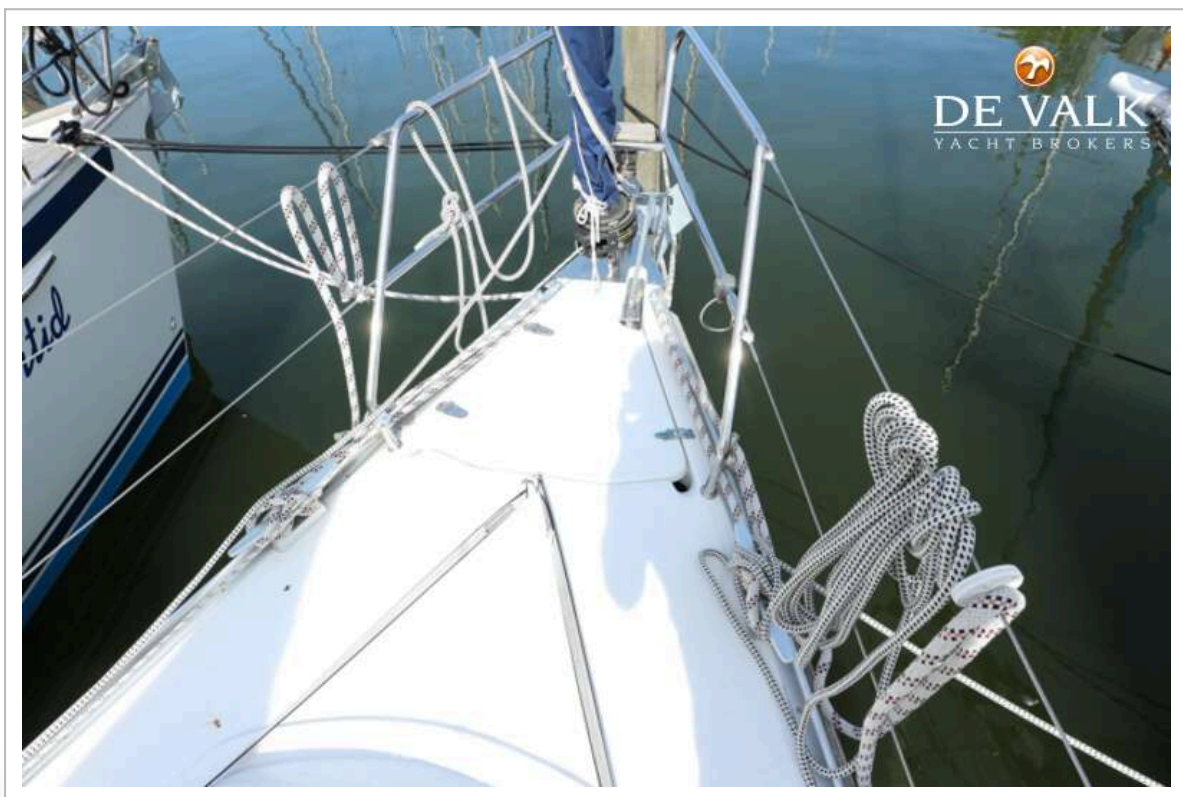
HANSE 315



HANSE 315



HANSE 315



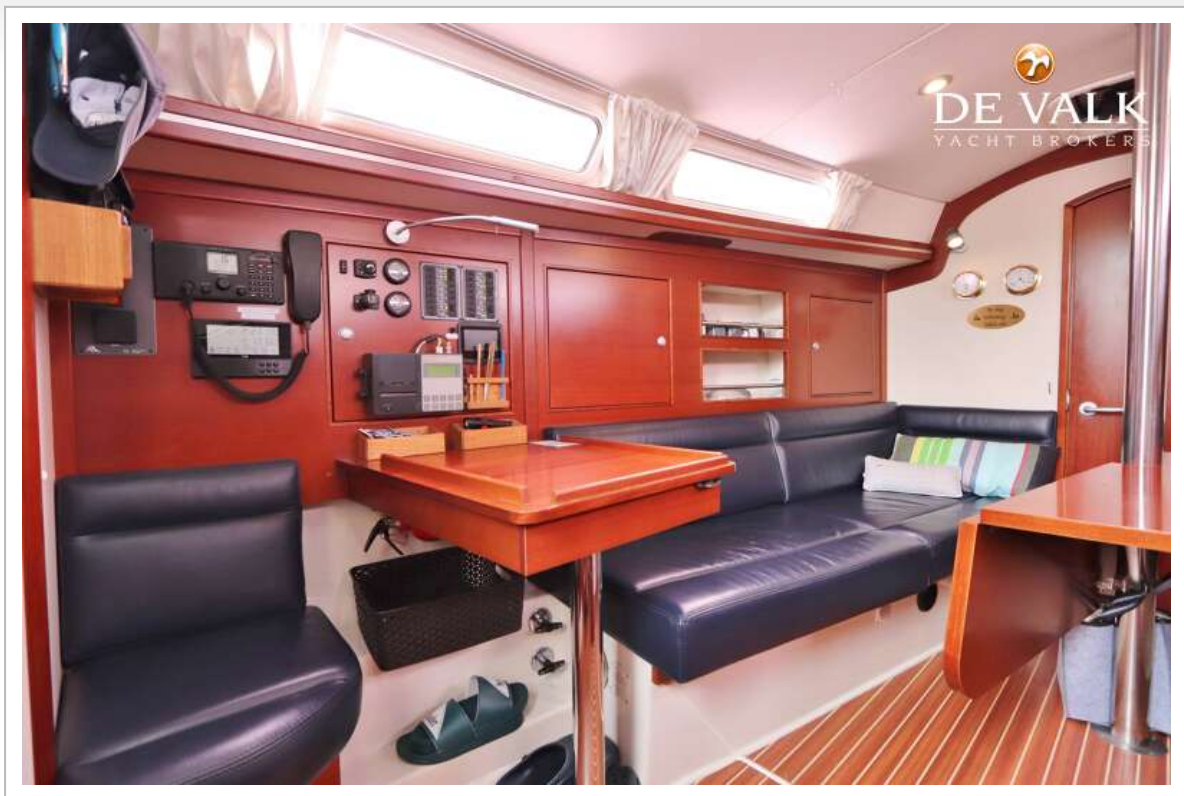
HANSE 315



HANSE 315



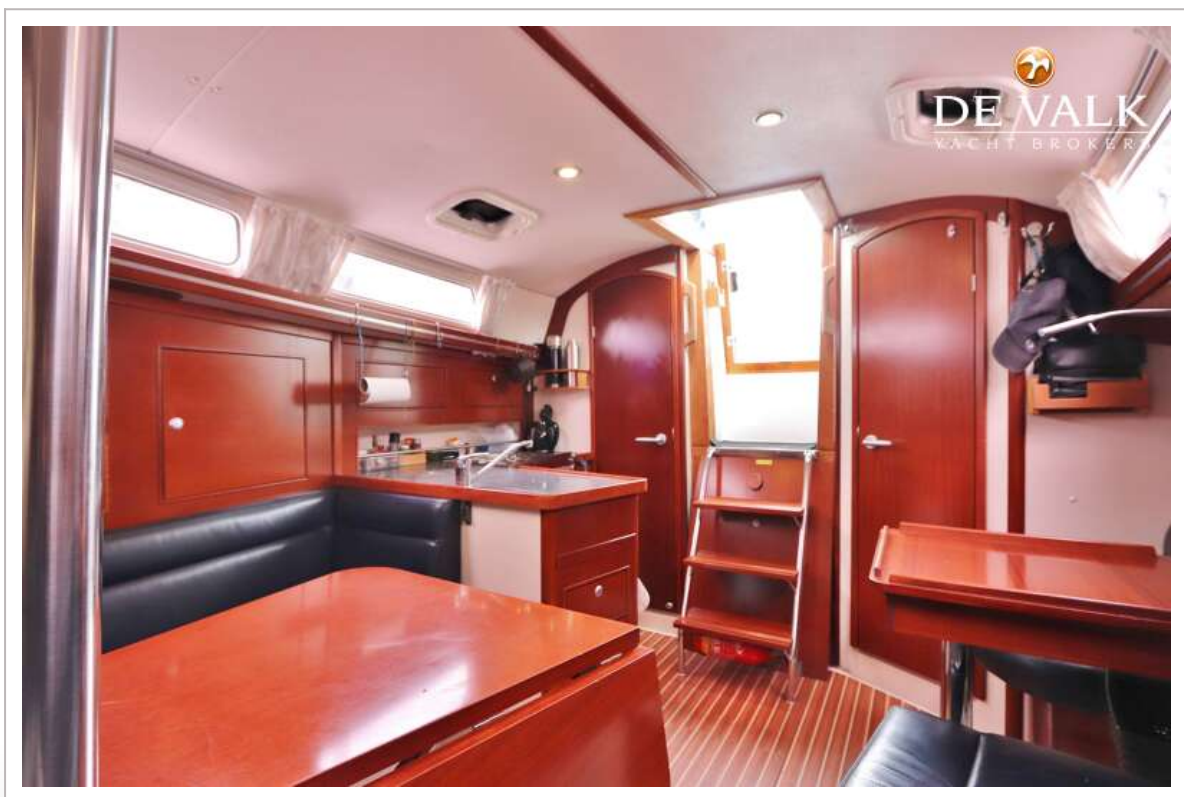
HANSE 315



HANSE 315



HANSE 315



HANSE 315



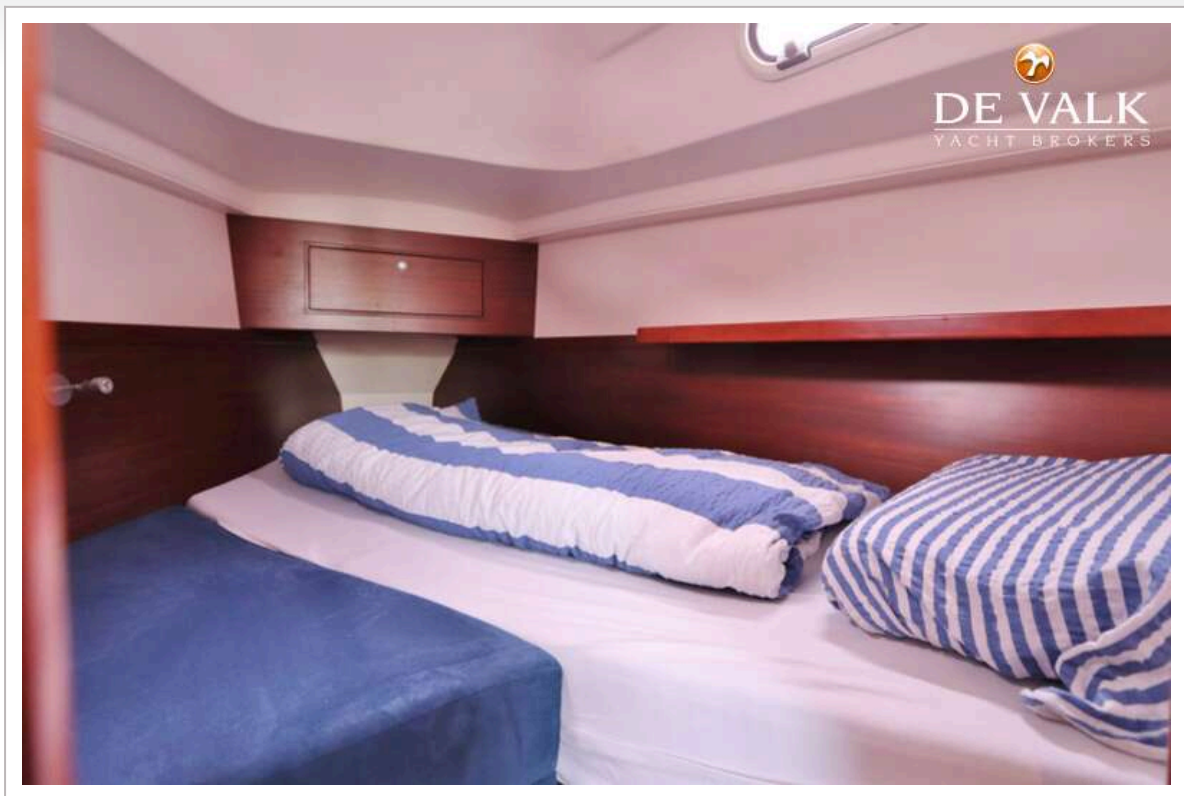
HANSE 315



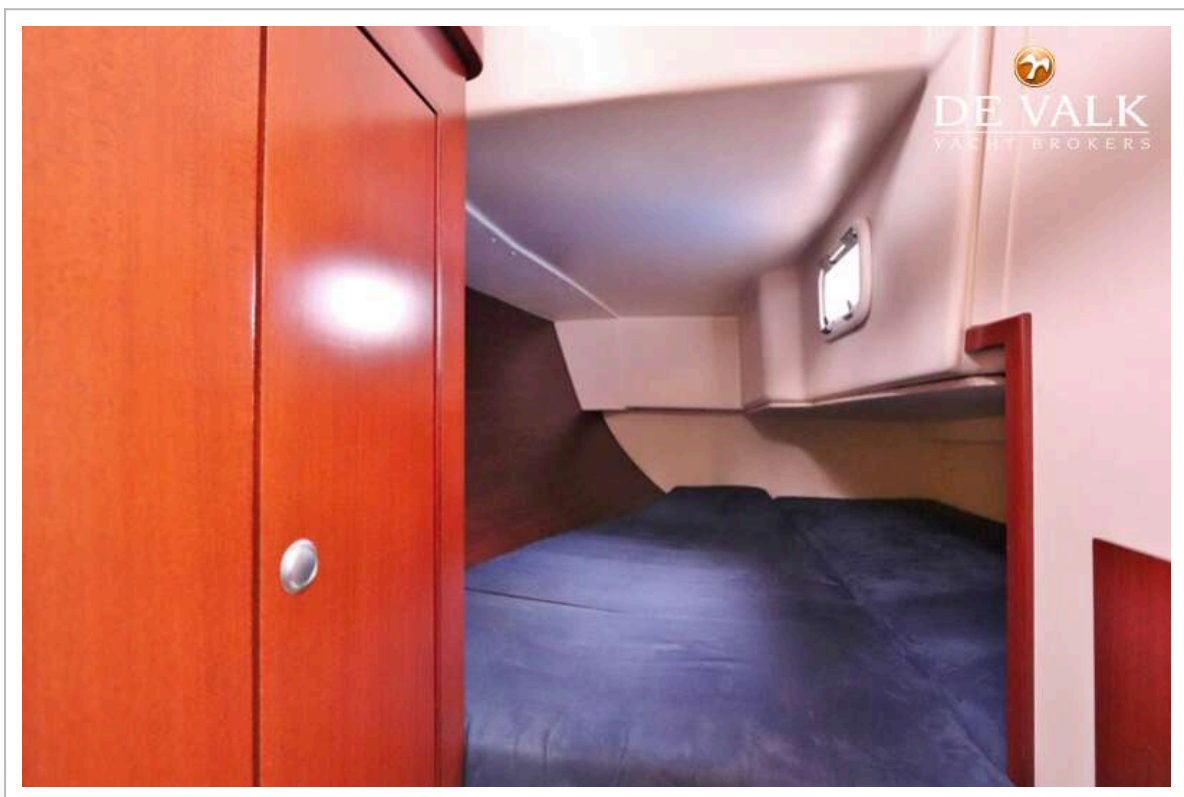
HANSE 315



HANSE 315



HANSE 315



HANSE 315

