



PRINZ 54 COUPE

PRINZ 54 COUPE

BROKER'S COMMENTS

The Prinz 54 with her bicolored hull and stylish design, is an eyecatcher in the harbour and at sea. You feel her elegance and performance, to give you the freedom you wish. The stylish interior and 3 cabins offer enough space for 6 at the Prinz 54. Navigation with the Volvo Penta IPS-system with 3 controls give you full control over the Prinz 54. The hull and superstructure need cosmetic attention. The berth is also for sale, see the advertisement on our website registered under "berth".

Eric Lamers

SPECIFICATIONS

Dimensions	16.94 x 4.47 x 1.00 (m)	Builder	Prinz Yachts
Built	2007	Cabins	3
Material	GRP	Berths	6
Engine(s)	2 x Volvo Penta D6 IPS 600 diesel	Hp/Kw	2 x 435.00 (hp), 320.16 (kw)
Asking price	€ 229.000 (VAT Paid)	Lying	contact Antibes

CONTACT

Sales office	De Valk Antibes	Telephone	+33 492 91 0202
Address	2, Avenue de Verdun 06600 Antibes FR	E-mail	antibes@devalk.nl

DISCLAIMER

These particulars are given in good faith as supplied but cannot be guaranteed.



PRINZ 54 COUPE

GENERAL

Model	PRINZ 54 COUPE
Type	motor yacht
LOA (m)	16,94
Beam (m)	4,47
Draft (m)	1,00
Year built	2007
Builder	Prinz Yachts
Country	Croatia
Designer	Quartostile Design
Displacement (t)	17
CE norm	B
Hull material	GRP
Hull colour	silver gray
Hull shape	deep-V
Superstructure material	composite
Rubbing strake	yes
Deck material	composite
Deck finish	teak
Cockpit deck finish	teak
Antifouling (year)	2024
Window frame	stainless steel
Window material	tempered glass
Portholes	stainless steel
Fuel tank (litre)	1600 Liter
Level indicator (fuel tank)	yes
Freshwater tank (litre)	400 Liter
Level indicator (freshwater)	yes
Blackwater tank (litre)	200 Liter
Blackwater tank extraction	deck extraction
Wheel steering	hydraulic



More info on paintwork

needs attention

Extra info

Fully built in epoxy composite construction resulting in a light yet strong construction throughout.

Extra info

IPS joystick "easy-docking" at helmstation and on aftdeck: left and right side

Extra info

Electric sliding sunroof and aft two sliding doors (in stainless steel frame) with access to the cockpit. Cockpit cushions and table, incl. washbasin with hot/cold water Sunbathing platform forward with cushions.

ACCOMMODATION

Cabins

3

Berths

6

Interior

Modern styled interior

Pilot house/deck saloon

Convertible cabrio-style

Sliding roof

yes

Air-conditioning

yes

Dinette

yes

Sliding door to aft deck

yes

Galley

yes

Countertop

yes

Sink

yes

Cooker

electric

Microwave

yes

Fridge

yes

Hot water system

220V + engine Boiler system

Water pressure system

electrical

Hot water tap

yes

Coffee maker

yes

Owners cabin

double bed

Wardrobe

hanging/drawers/shelves

Bathroom

en suite



PRINZ 54 COUPE

Toilet	en suite
Toilet system	electric
Wash basin	in the bathroom
Shower	en suite
Guest cabin 1	double bed
Wardrobe	hanging/drawers/shelves
Bathroom	en suite
Toilet	en suite
Toilet system	electric
Wash basin	in the bathroom
Shower	shared
Guest cabin 2	double bed
Wardrobe	hanging and drawers
Tender garage	yes

MACHINERY

No of engines	2
Make	Volvo Penta D6
Type	IPS 600
HP	435
kW	320.16
Fuel	diesel
Year of overhaul	port engine overhauled 2024
Cruising speed (kn)	20
Drive	IPS
Engine controls	electrical Volvo Penta EDC/EVC
Gearbox	hydraulic Volvo Penta IPS drives
Exhaust	watercooled
Electrical installation	12/220V
Generator	3 kW
Batteries	yes



PRINZ 54 COUPE

Start battery	2x
Service battery	3x
Battery charger	yes
Inverter	yes
Shorepower	yes
Extra info	SB IPS revised 2022 Port engine revised 2024

NAVIGATION

Electric compass	yes
Multi control display	yes
Depth sounder/log	yes
VHF	Raymarine
Autopilot	Raymarine
Radar	Raymarine
GPS	Raymarine
Plotter	Raymarine
Electronic chart(s)	yes
Navigation lights	yes

EQUIPMENT

Fixed windscreen	yes
Window cover	yes
Bathing platform	Full beam hydraulic lowering platform
Boarding ladder	stainless steel
Gangway	Bioinox (hydraulic)
Deck shower	Cold and warm water
Anchor	Delta
Anchor chain	40 m.stainless steel
Chain counter	yes
Windlass	electrical
Capstan	electrical

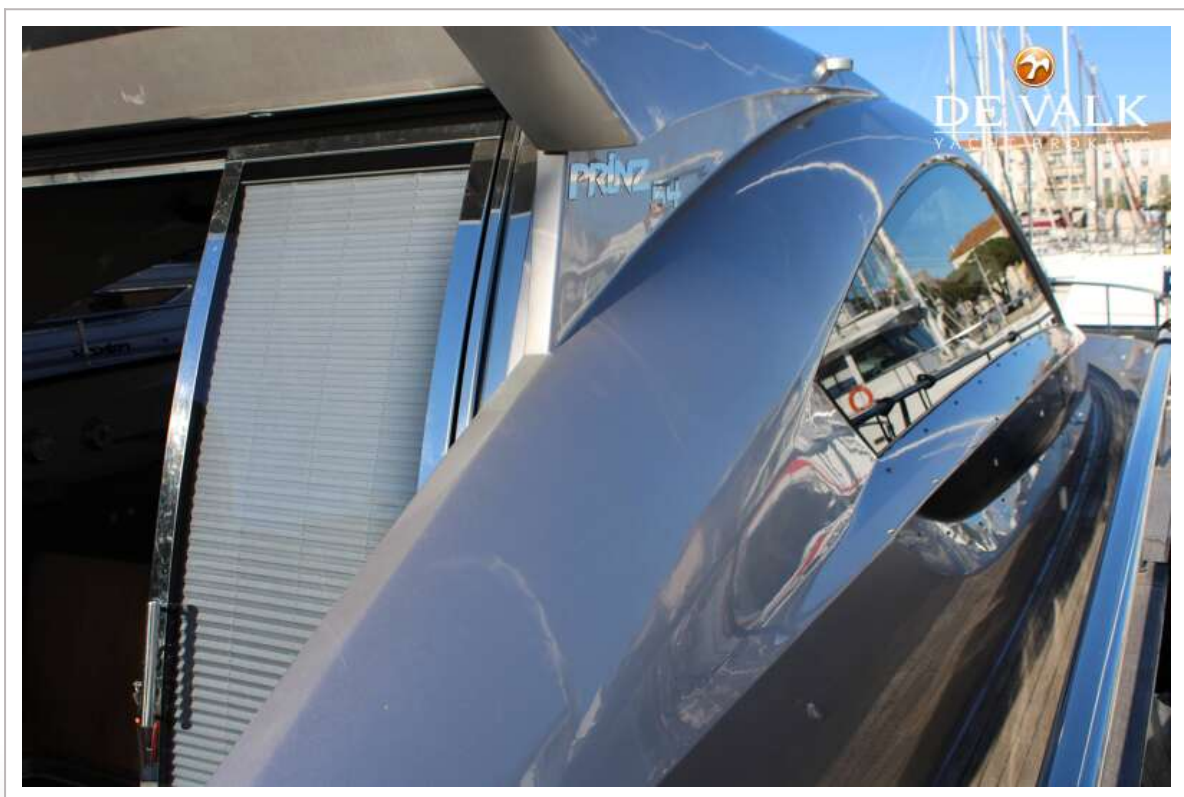


PRINZ 54 COUPE

Dinghy	yes
Sea railing	stainless steel
Pulpit	stainless steel
Wiper	2 x
Horn	electric
Fenders	yes
Mooring lines	yes
TV	yes
Sub-woofer	yes
Speakers in salon	yes
Clock - barometer	yes



PRINZ 54 COUPE



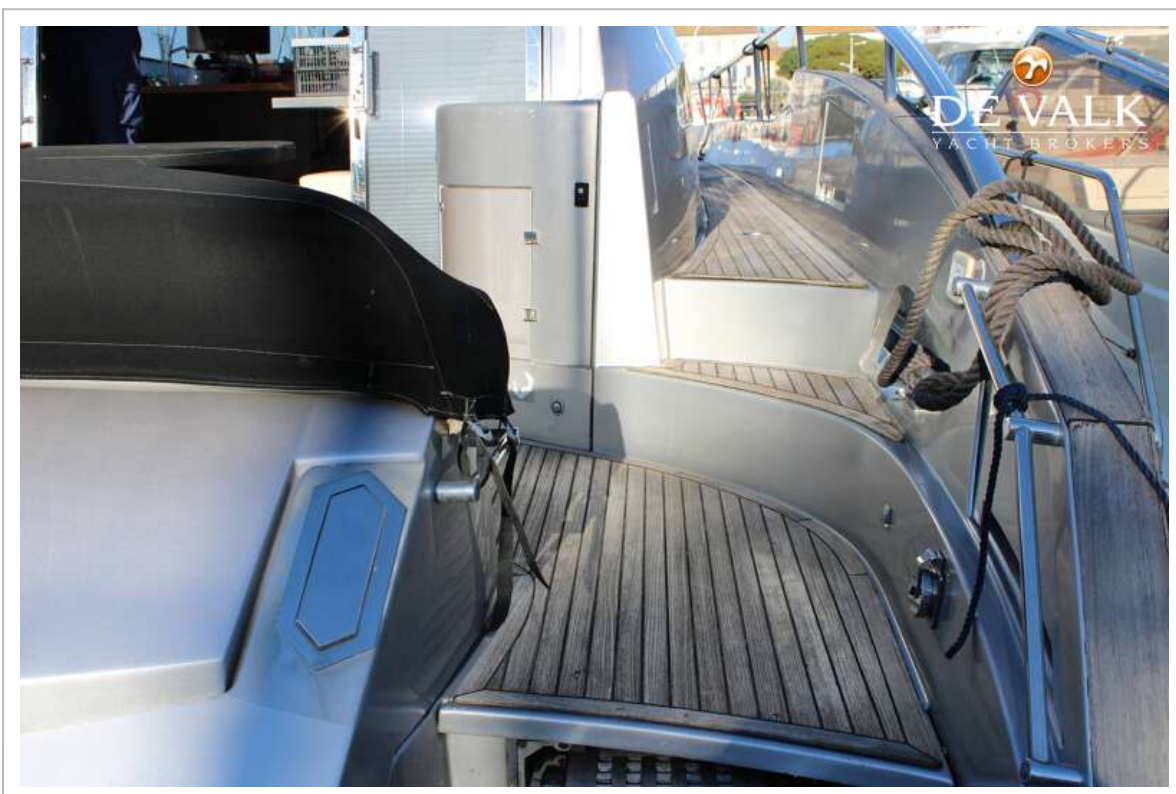
PRINZ 54 COUPE



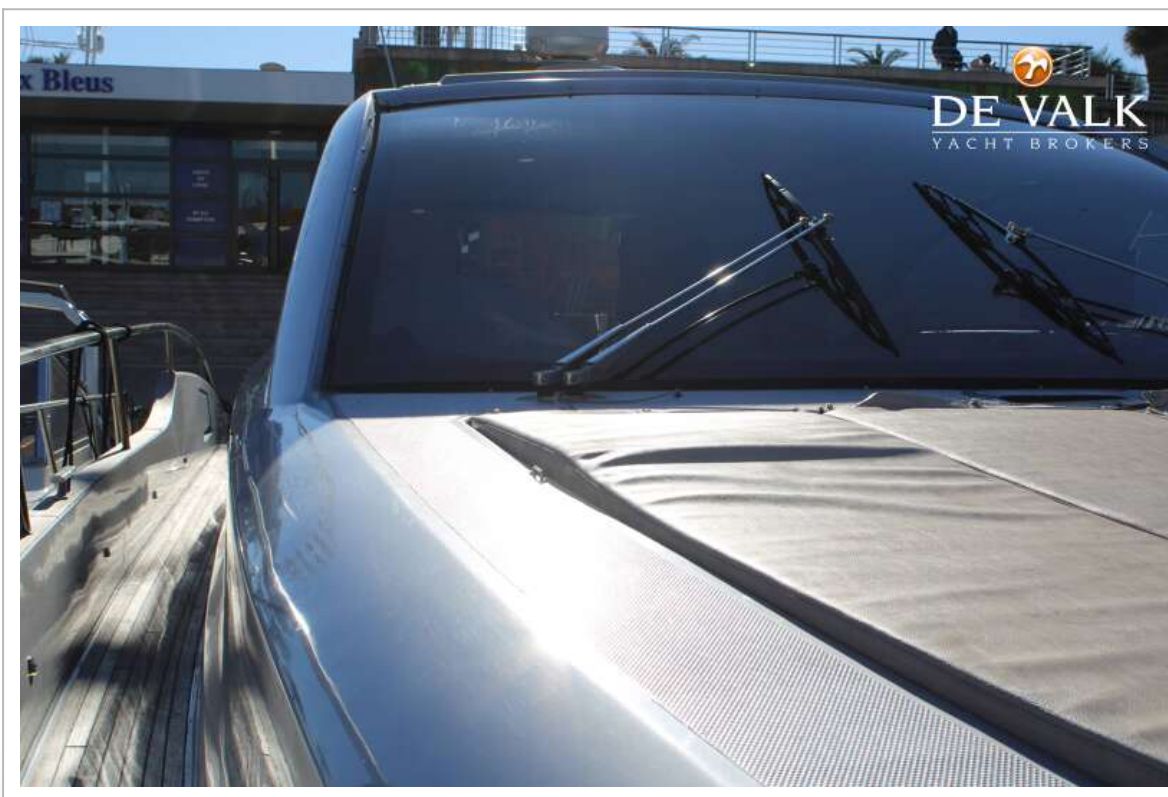
PRINZ 54 COUPE



PRINZ 54 COUPE



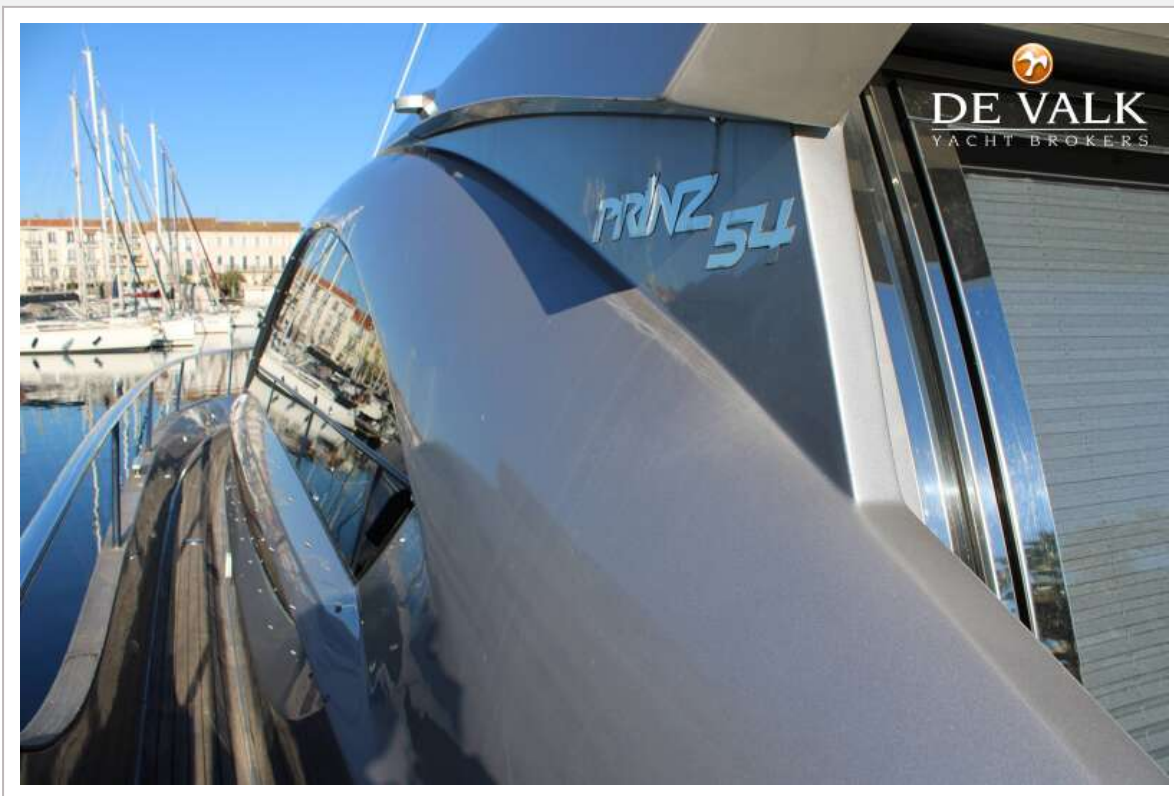
PRINZ 54 COUPE



PRINZ 54 COUPE



PRINZ 54 COUPE



PRINZ 54 COUPE



PRINZ 54 COUPE



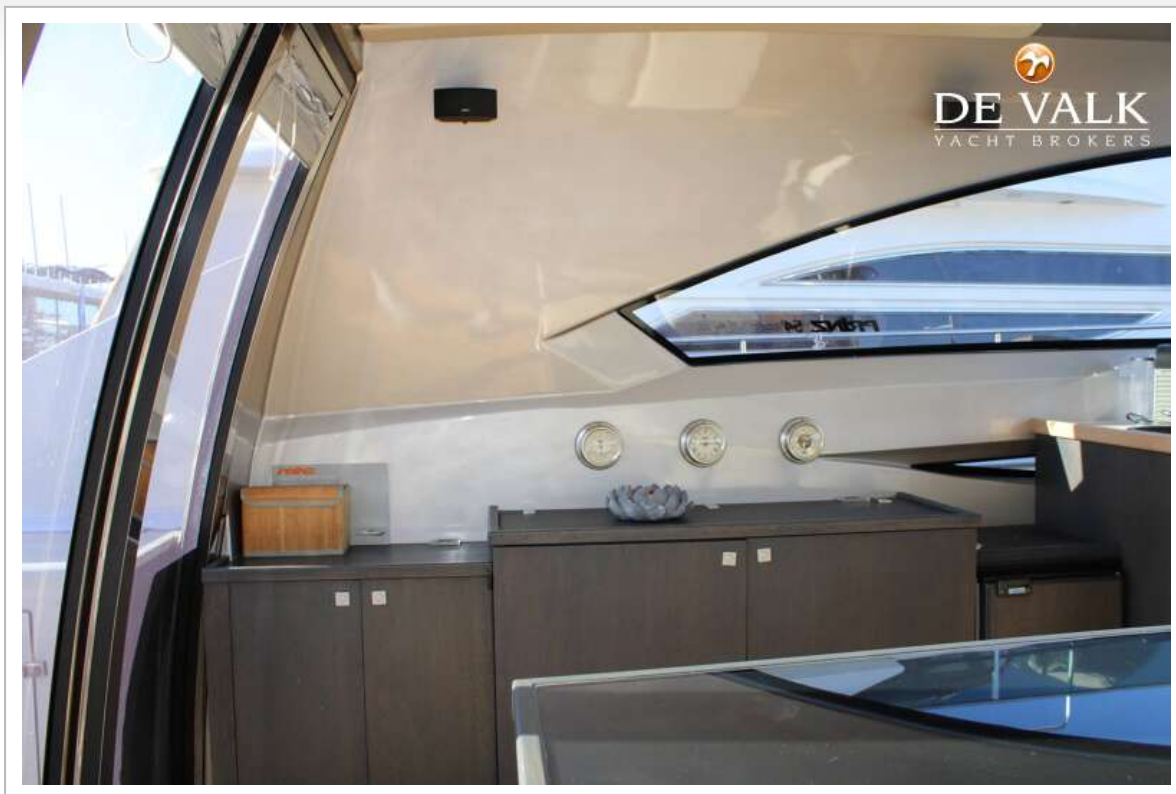
PRINZ 54 COUPE



PRINZ 54 COUPE



PRINZ 54 COUPE



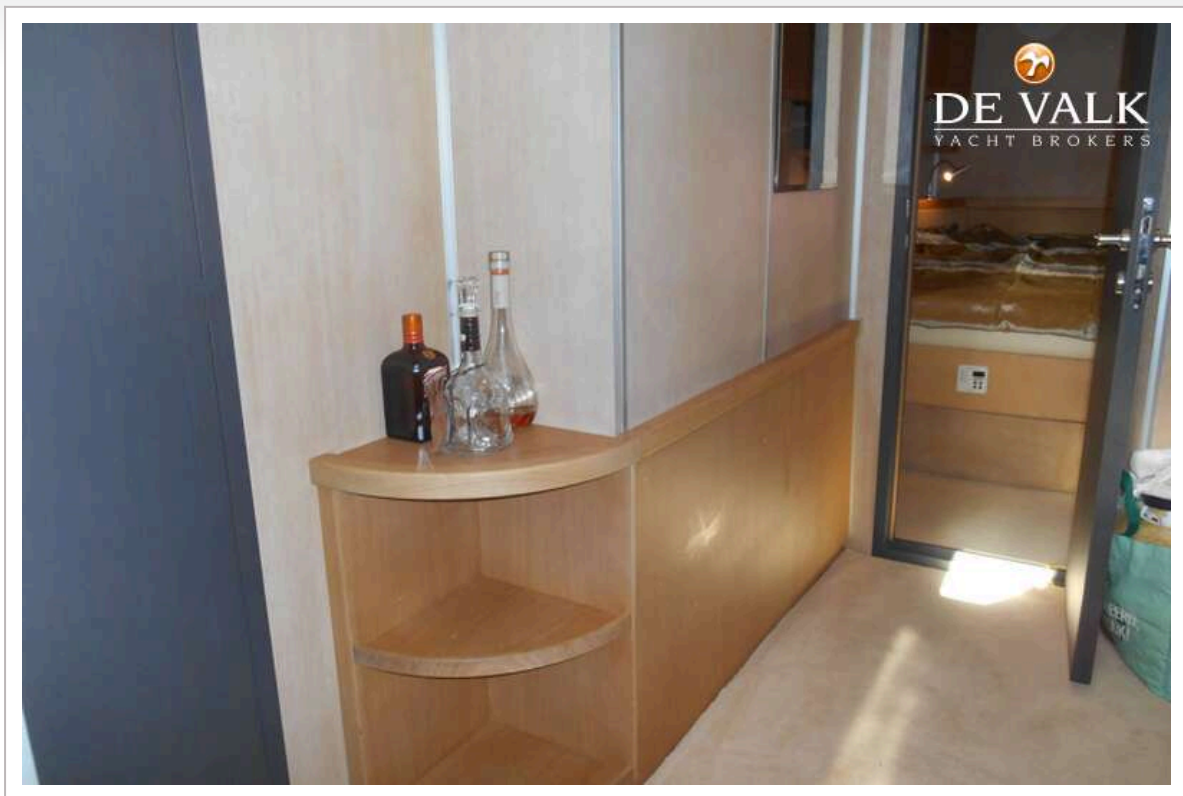
PRINZ 54 COUPE



PRINZ 54 COUPE



PRINZ 54 COUPE



PRINZ 54 COUPE



PRINZ 54 COUPE



PRINZ 54 COUPE



PRINZ 54 COUPE

