



DE VALK
YACHT BROKERS



HANSE 370



DE VALK
YACHT BROKERS

BROKERAGE | CHARTER | BERTHS | FINANCE | INSURANCE | YACHT MANAGEMENT

HANSE 370

BROKER'S COMMENTS

The Hanse 370 is an innovative and timeless design. The modern interior offers lots of space below decks with three full size cabins and a big dinette in the salon. Nice bright woodwork, ample storage comfortable dimensions. The Hanse 370 deck layout with self-tacking jib and wheel steering makes her very easy to handle. Grey hull and white topsides so lots of possibilities to individualize your yacht. The Hanse 370 has to be considered to be a cross over yacht where comfort is key without compromising on sail performance.

Jan-Ward van Dantzig

SPECIFICATIONS

Dimensions	11.35 x 3.75 x 1.95 (m)	Builder	Hanse Yachts
Built	2007	Cabins	3
Material	GRP	Berths	8
Engine(s)	1 x Yanmar 3YM30 diesel	Hp/Kw	29.00 (hp), 21.34 (kw)
Asking price	sold (VAT)	Lying	elsewhere / Not at sales office

CONTACT

Sales office	De Valk Sint Annaland B.V.	Telephone	+31 (0)166 601 000
Address	Koelhuisweg 4 4697 RM Sint Annaland NL	E-mail	sintannaland@devalk.nl

DISCLAIMER

These particulars are given in good faith as supplied but cannot be guaranteed.



GENERAL

Model	HANSE 370
Type	sailing yacht
LOA (m)	11,35
LWL (m)	10,05
Beam (m)	3,75
Draft (m)	1,95
Air draft (m)	18,35
Headroom (m)	1,95
Year built	2007
Launched	2008
Builder	Hanse Yachts
Country	Germany
Designer	Judel / Vrolijk & Co
Displacement (t)	6,52
Ballast (tonnes)	2,2
CE norm	A
Hull material	GRP
Hull colour	grey
Hull shape	round-bilged
Keel type	fin keel
Superstructure material	GRP
Rubbing strake	stainless steel
Deck material	GRP
Deck finish	teak
Superstructure deck finish	non-skid moulded in
Cockpit deck finish	teak
Antifouling (year)	2023
Window frame	aluminium Lewmar
Window material	polycarbonate
Deckhatch	Lewmar (in front cabin with OceanAir screen & mosquito net)



Portholes	aluminium Lewmar
Fuel tank (litre)	stainless steel 140
Level indicator (fuel tank)	yes
Freshwater tank (litre)	polyethylene 300
Level indicator (freshwater)	yes
Blackwater tank (litre)	stainless steel
Blackwater tank extraction	deck extraction + uw line
Wheel steering	Leather covered stainless steel Jefa steering wheel
Outside helm position	Jefa pedestal with rod link steering system
Emergency tiller	Stainless steel
Extra info	Grey cover over the steering wheel and pedestal (new in 2021)

ACCOMMODATION

Cabins	3
Berths	8
Interior	cherry (bright) with white panels
Floor	woodprint
Open cockpit	yes
Saloon	yes
Headroom saloon (m)	1,84 - 1,90
Heating	Eberspacher (with blowing points in all cabins and saloon)
Chart table	On port side
Aft Cabin	2 x
Dinette to convert into berth	yes
Galley	On starboard side next to the entrance
Countertop	corian (anthracite)
Sink	stainless steel 2 x
Cooker	calor gas 2 burners
Oven	yes
Fridge	Fridge with Isotherm compressor and top & Front door
Freezer	Small freezing compartment in the fridge



Hot water system	220V + engine Isothemp boiler (new in 2020)
Water pressure system	electrical
Owners cabin	v-bed Front Cabin - Headroom : 1,90m
Bed length (m)	2,03 x 1,80
Wardrobe	hanging and shelves
Bathroom	shared Headroom : 1,85m
Toilet	en suite Jabsco
Toilet system	manual
Wash basin	in the bathroom
Shower	shared (in bathroom with a shower door)
Extra info	Slatts under the mattresses in the front cabin
Guest cabin 1	double bed Starboard Aft Cabin - Headroom : 1,90m
Bed length (m)	1,95 x 1.60
Wardrobe	hanging and shelves
Guest cabin 2	Port Side Aft Cabin - Headroom : 1,90 m
Bed length (m)	1,95 x 1,60
Wardrobe	hanging and shelves
Extra info	The top loader fridge very large (130 Litre)

MACHINERY

No of engines	1
Make	Yanmar
Type	3YM30
HP	29
kW	21.34
Fuel	diesel
Year installed	2007
Maximum speed (kn)	6,5
Cruising speed (kn)	5,5
Consumption (l/hr)	2,7
Engine cooling system	freshwater heat exchanger



Drive	sail-drive
Engine controls	bowden cable
Propeller type	fixed
Propeller blades	2
Manual bilge pump	1 x
Electric bilge pump	1 x
Electrical installation	12 & 220 Volt
Start battery	1x Varta 74 Ah (2015)
Service battery	3 x Semi-Traction 90 Ah (2015)
Battery charger	Sterling Power Products Pro Charge D - 50A
Inverter	Victron Phoenix 12 V 180 W
Diode battery combiners	yes
Shorepower	with cable (with a circuit breaker)
Extra info	Mastervolt Batterymate.
Extra info	The engine has been serviced annually by a Yanmar dealer.
Extra info	Delphi Fuel filter with water separator.

NAVIGATION

Compass	Plastimo Olympic 135 (on the pedestal)
Depth sounder/log	Simrad IS20
Windset	Simrad IS20
Repeater	Simrad IS20 (at the chart tabel)
VHF	Simrad RS82
VHF handheld	Icom IC-M25 (New in 2018)
Autopilot	Simrad AC12
Rudder angle indicator	Via autopilotpilot
Plotter/GPS	B&G V9 on the pedestal (New in 2018)
Electronis chart(s)	(new in 2018)
AIS transceiver	Raymarine AIS700 Class B Tranceiver/Splitter (new in 2022)
Navigation lights	yes
Extra info	Various 220 Volt sockets.



EQUIPMENT

Sprayhood with grab rail	Grey Sprayhood (new in 2021)
Cockpit cushions	2 x grey cushions and 2x bordeaux Comfort Seat
Cockpit table	Removable XL teak cockpit table
Bathing platform	Open stern
Boarding ladder	stainless steel
Deck shower	At the bathing platform
Anchor	Delta
Anchor chain	yes
Windlass	electrical Lewmar Pro-Series, with wired remote control on the bow
Sea railing	stainless steel Double wired
Grab rail (superstructure)	stainless steel
Pushpit	Stainless steel
Pulpit	Stainless steel
Life raft	valise (or bag) Arimar Sea World B (new in 2020)
Life raft (pers)	4
Last life raft survey	Needs to be surveyed this year
Lifebuoy	(white)
Radar reflector	Firdel Blipper in the mast
Fenders	yes
Mooring lines	yes
Radio-cd player	Sony Marine Drive S radio/cd-player
Speakers in salon	2x Sony
Clock - barometer	Plastimo Barometer & Temp/hydrometer & 2x Clock
Fire extinguisher	yes
Extra info	6x aluminium cleat (so also amidships)
Extra info	Removable teak cup/glass holder (on the frontside of pedestal)

RIGGING

Rigging	fractional 9/10
---------	-----------------



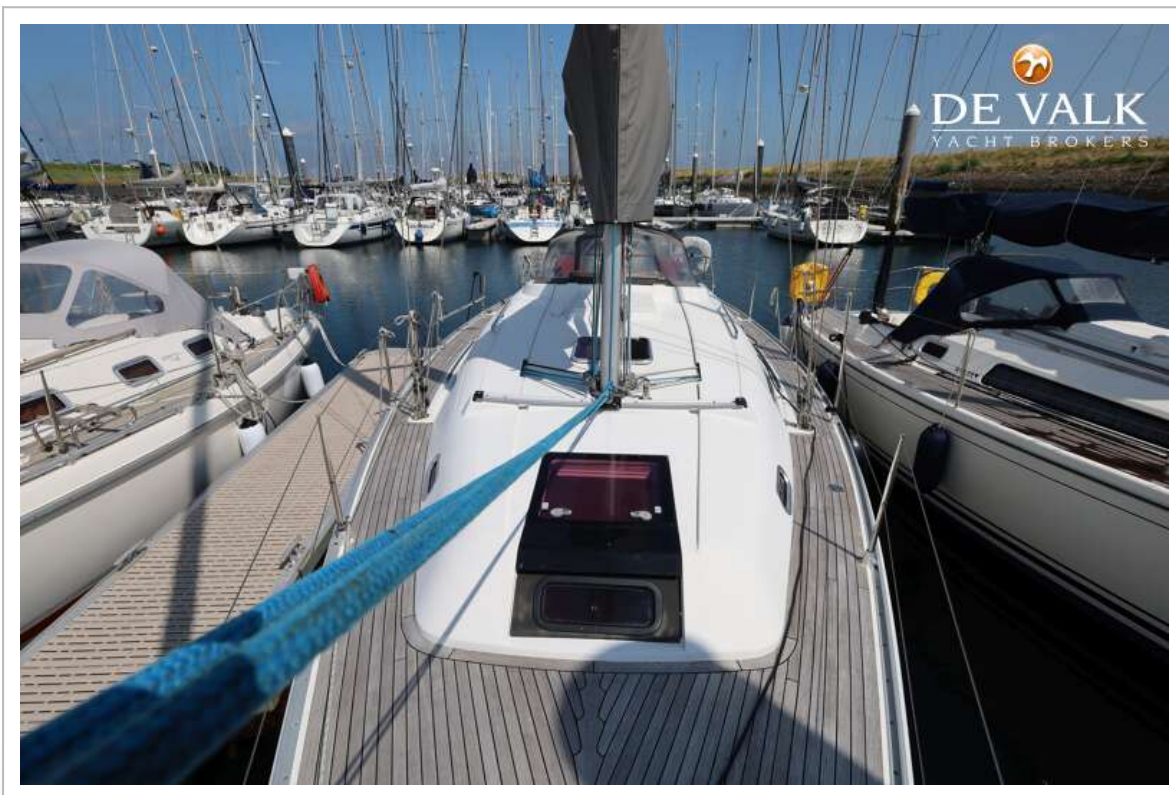
Standing rigging	wire
Brand mast	Sparcraft
Material mast	aluminium
Spreaders	2 x set
Mainsail cover	Grey Lazy-Bag mainsail cover with Lazy-Jacks (new in 2021)
Fully battened mainsail	North Sails
Jib	Self Tacking North Sails Jib
Genoa furler	Facnor LS 180
Gennaker	North Sails with a snuffer
Self tacking jib installation	Aluminium Pfeiffer rail
Reefing System	quick-one-line-reefing
Backstay adjuster	tackle
Boomvang	Sparcraft
Genoa sheetwinches	2 x aluminium Lewmar 46 ST
Halyard winches	1x electric & 1x manual aluminium Lewmar 46 ST
Gennaker pole	stainless steel
Extra info	10 x Spinlock halyard jammers under the sprayhood
Extra info	3x folding plastic mast-step



HANSE 370



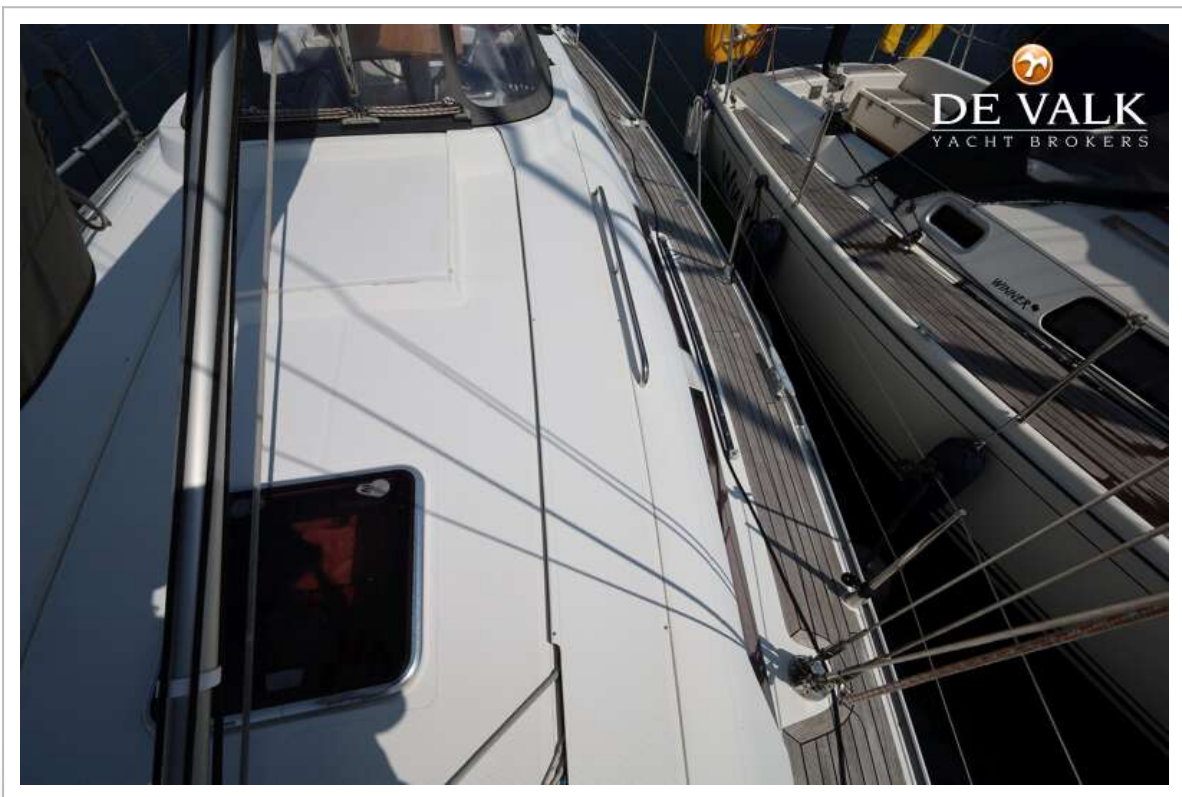
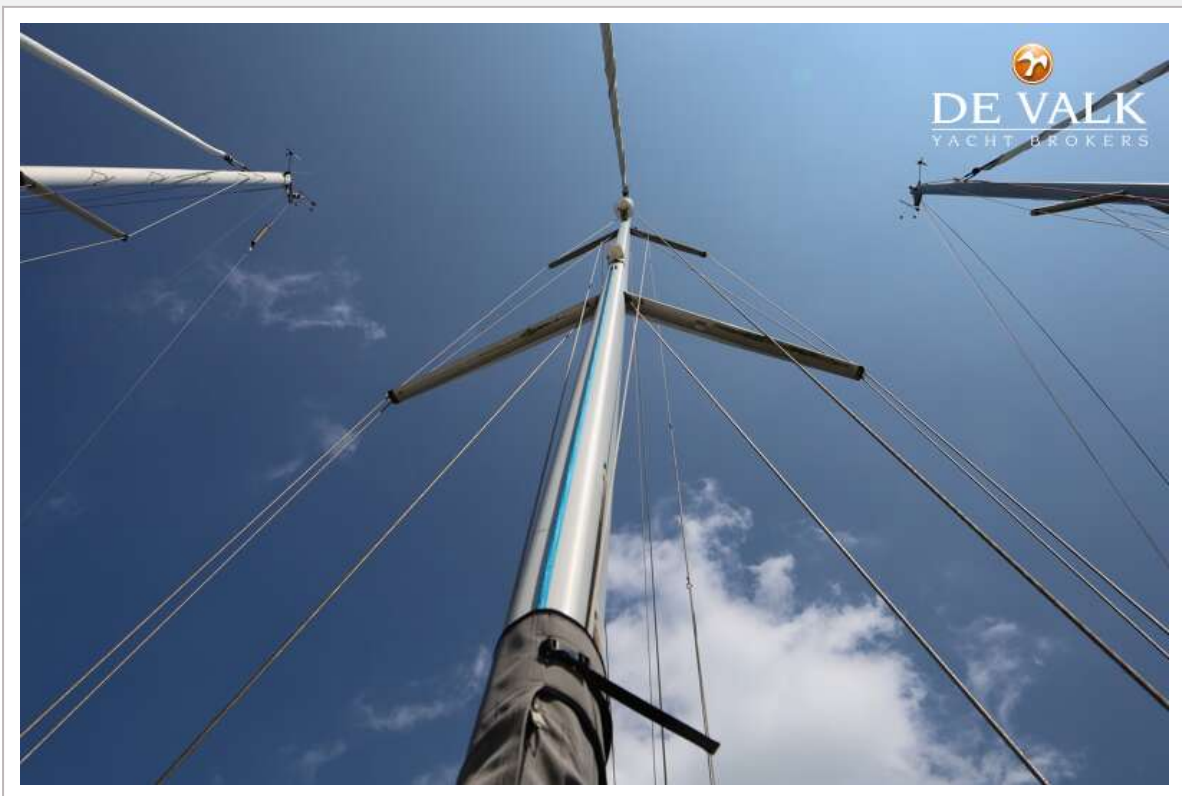
HANSE 370



HANSE 370



HANSE 370



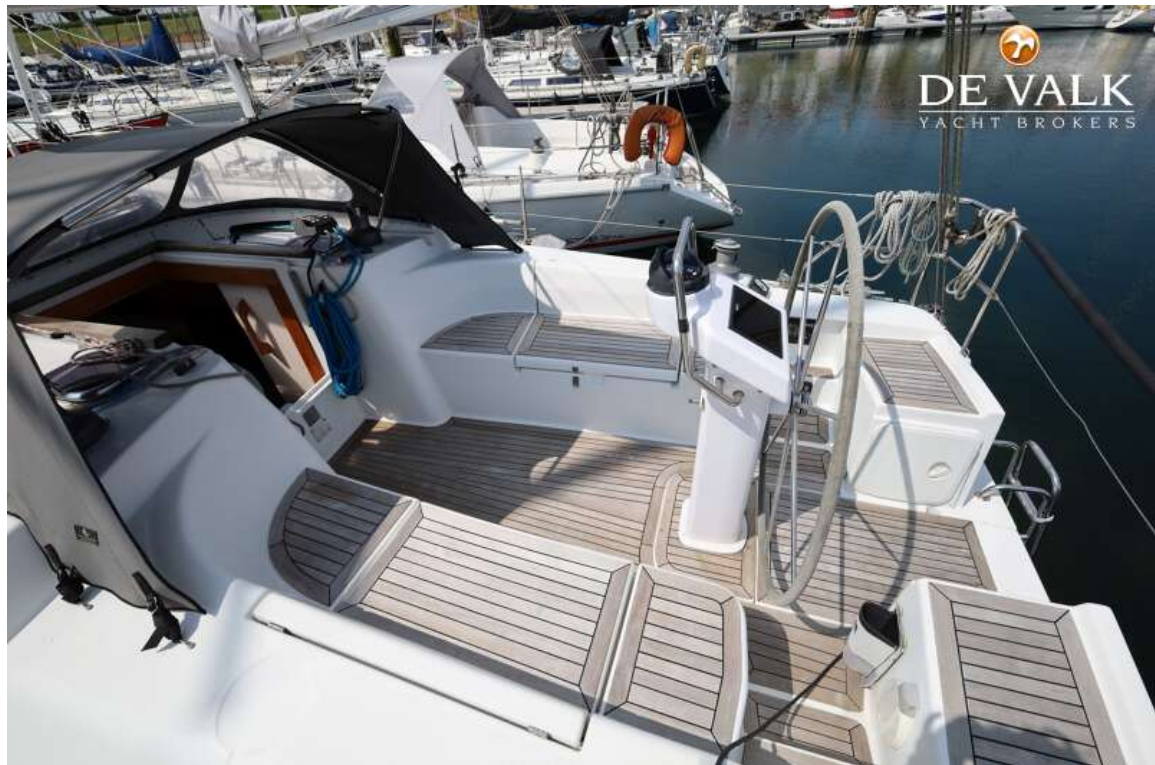
HANSE 370



HANSE 370



HANSE 370



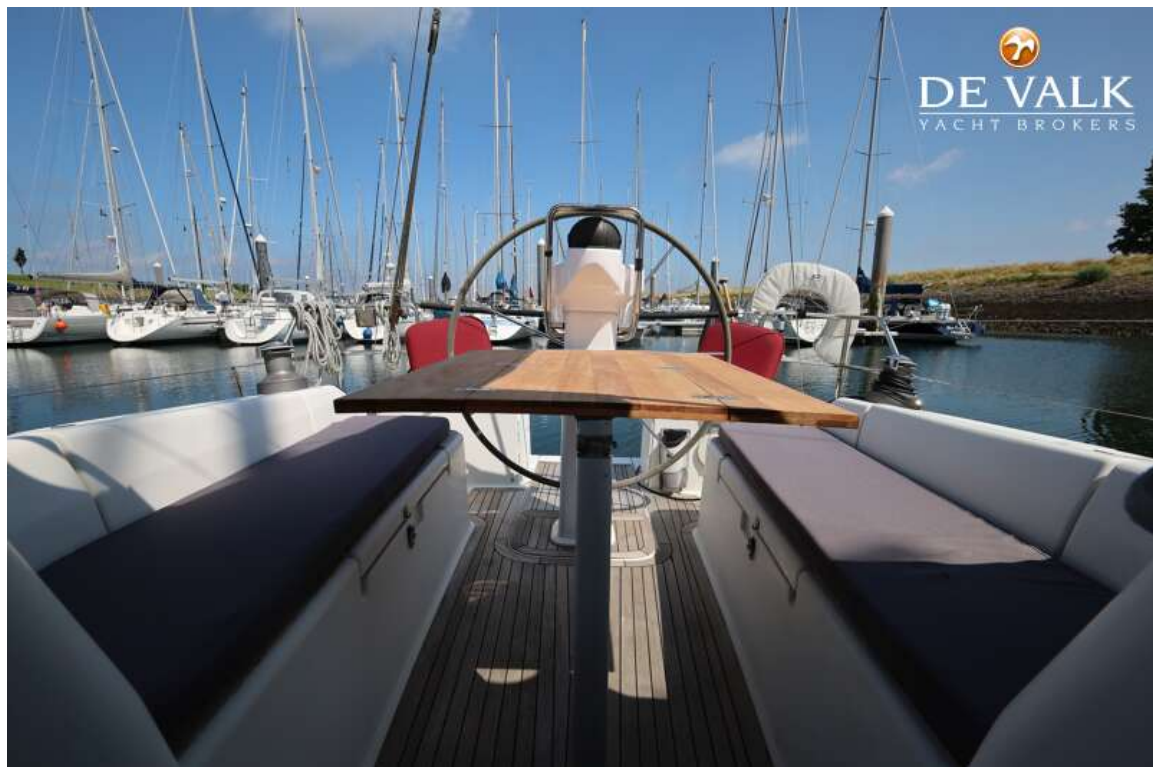
HANSE 370



HANSE 370



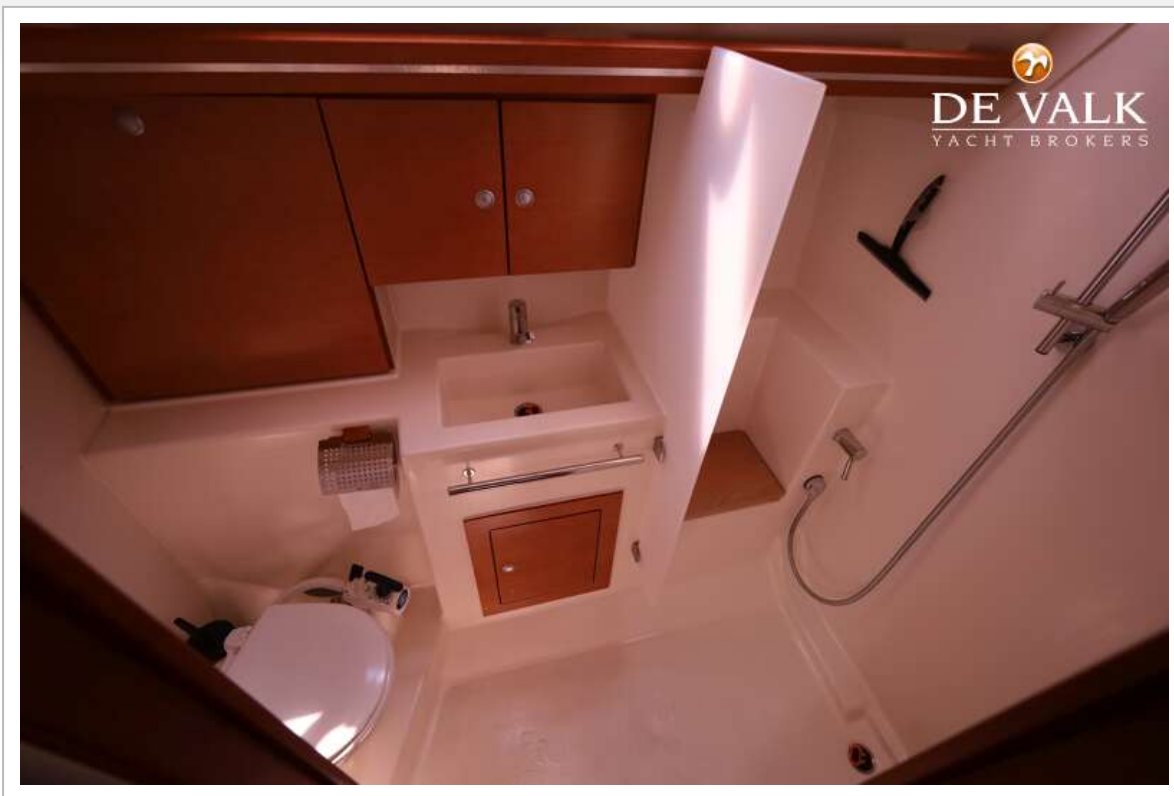
HANSE 370



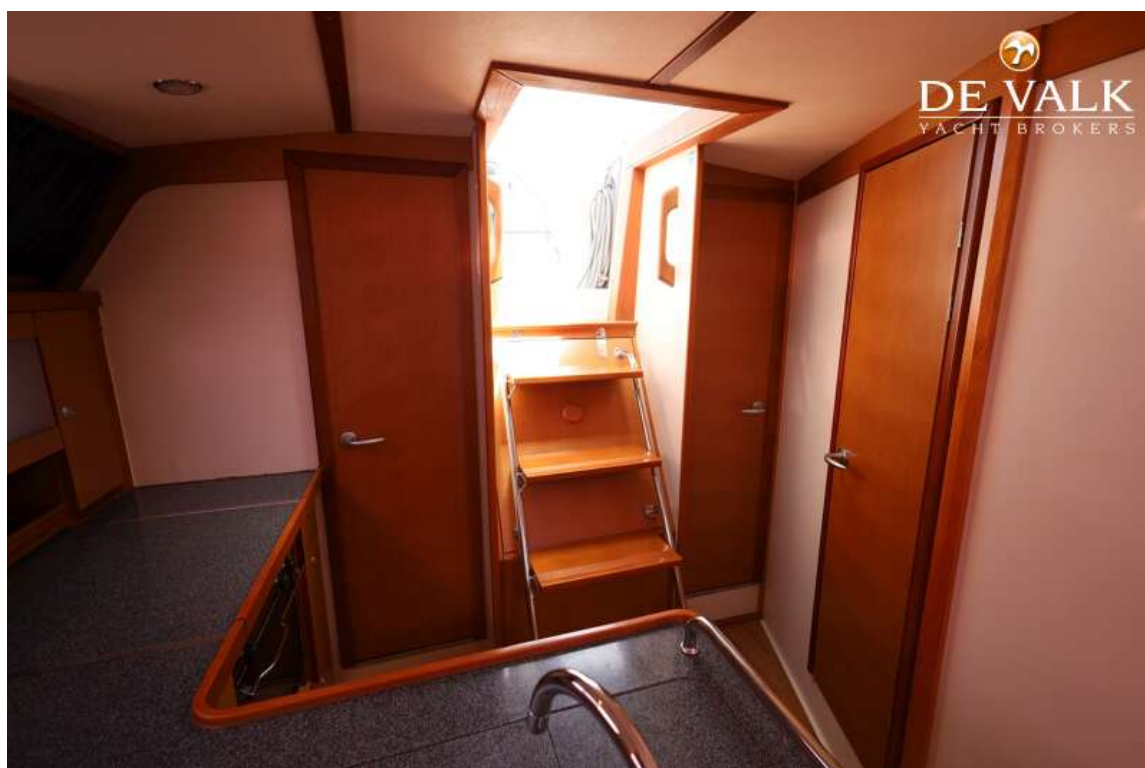
HANSE 370



HANSE 370



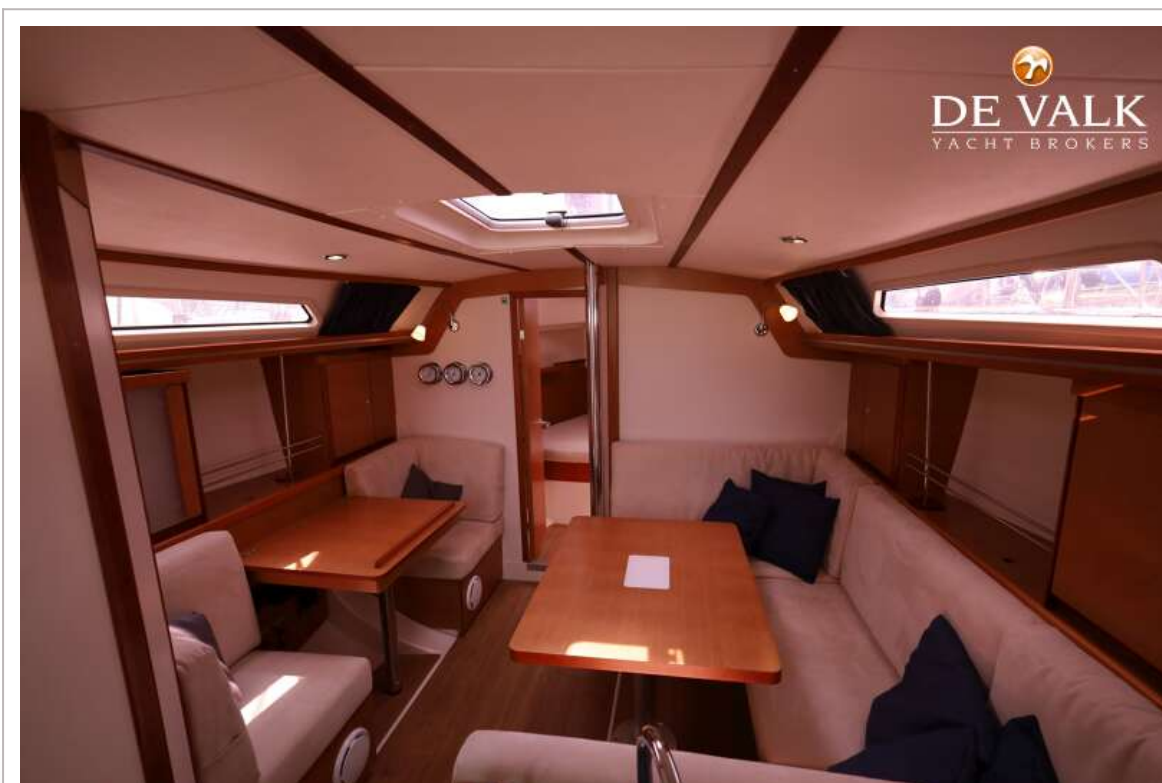
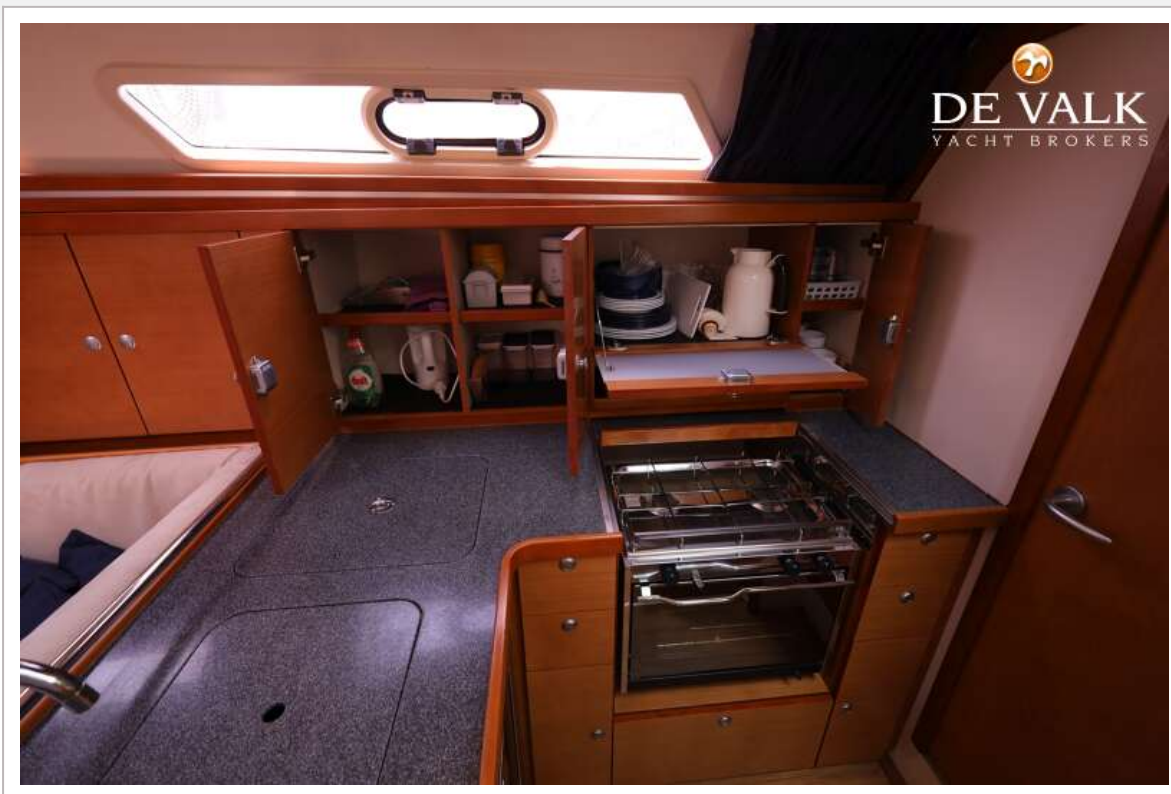
HANSE 370



HANSE 370



HANSE 370



HANSE 370



HANSE 370



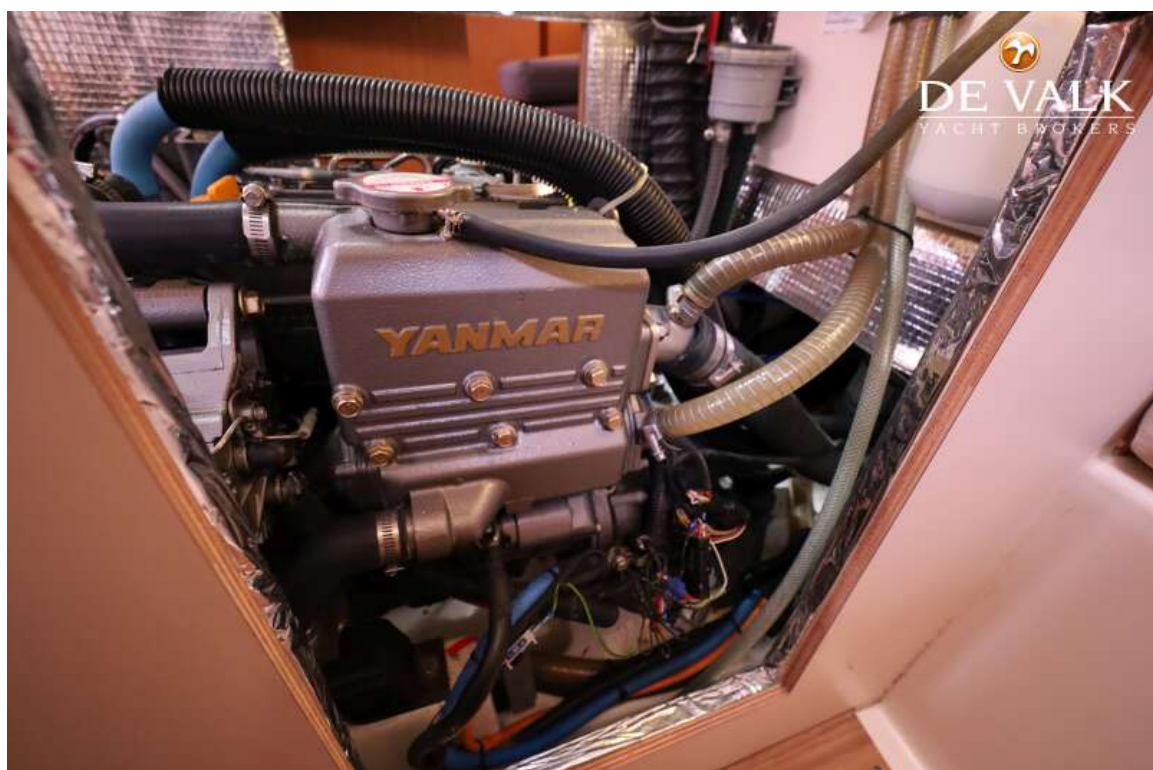
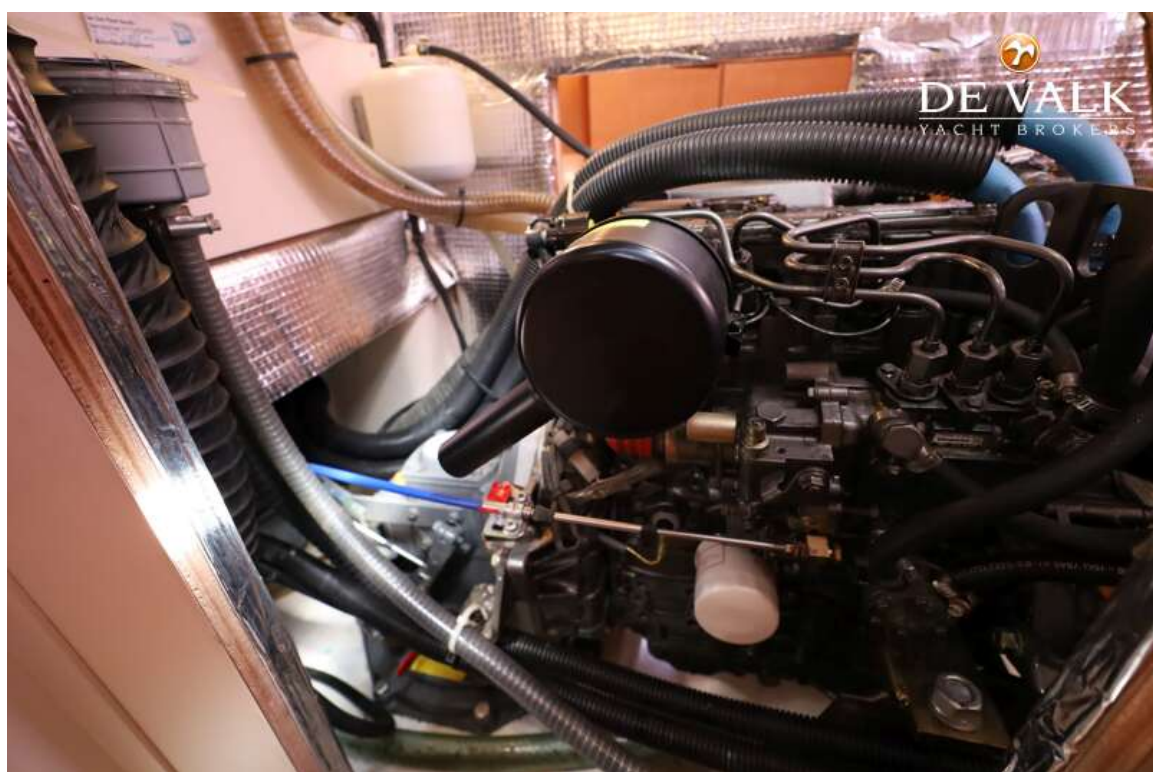
HANSE 370

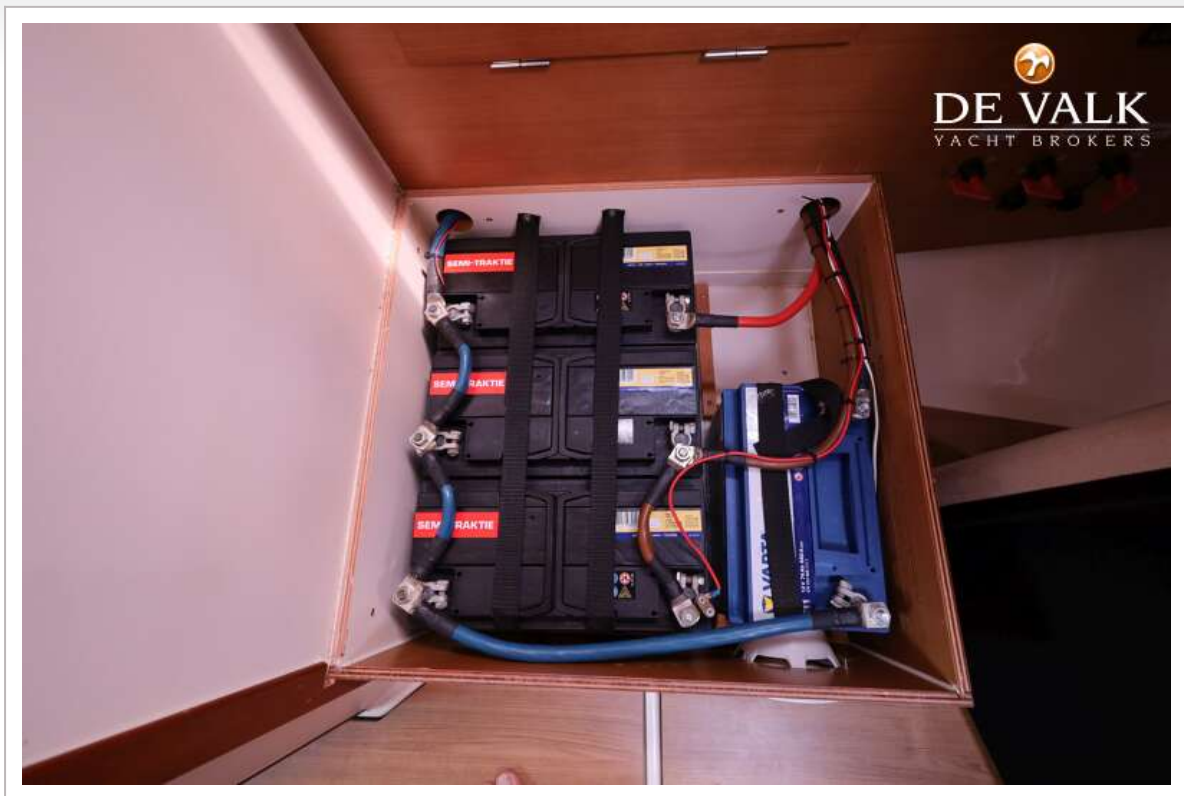


HANSE 370



HANSE 370





HANSE 370

