



DE VALK



DUFOUR 500 GRAND LARGE



DE VALK
YACHT BROKERS

DUFOUR 500 GRAND LARGE

BROKER'S COMMENTS

Very good maintained Dufour 500 Grand Large from 2014. She is better then new and completely equipped. Like: Generator, Airco, Wash machine, electric winches, dishwasher, Plancha grill in cockpit and fridge in cockpit table. The saloon is enormous, with a U-shaped settee and convertible table to port and a straight settee to starboard. She has a big master cabin with island bed and split head and shower compartment. The Dufour 500 Grand Large is a perfect family cruiser with all het luxury you need.

Johan Schootstra

SPECIFICATIONS

| | | | |
|---------------------|-------------------------------|----------------|-------------------------|
| Dimensions | 14.95 x 4.80 x 2.00 (m) | Builder | Dufour Yachts |
| Built | 2014 | Cabins | 4 |
| Material | GRP | Berths | 8 |
| Engine(s) | 1 x Volvo Penta D3-110 diesel | Hp/Kw | 110.00 (hp), 80.96 (kw) |
| Asking price | sold (VAT) | Lying | contact Hindeloopen |

CONTACT

| | | | |
|---------------------|---|------------------|-----------------------|
| Sales office | De Valk Hindeloopen B.V. | Telephone | +31 514 52 40 00 |
| Address | Oosterstrand 1 8713 JS Hindeloopen NL | E-mail | hindeloopen@devalk.nl |

DISCLAIMER

These particulars are given in good faith as supplied but cannot be guaranteed.



DUFOUR 500 GRAND LARGE

GENERAL

| | |
|----------------------------|---|
| Model | DUFOUR 500 GRAND LARGE |
| Type | sailing yacht |
| LOA (m) | 14,95 |
| LWL (m) | 13,67 |
| Beam (m) | 4,80 |
| Draft (m) | 2,00 |
| Air draft (m) | 21,40 |
| Headroom (m) | 2,00 |
| Year built | 2014 |
| Builder | Dufour Yachts |
| Country | France |
| Designer | Umberto Felci |
| Displacement (t) | 15,2 |
| Ballast (tonnes) | 4 t. |
| CE norm | A |
| Hull material | GRP |
| Hull colour | white |
| Hull shape | round-bilged |
| Keel type | fin keel with bulb |
| Superstructure material | GRP |
| Deck material | GRP |
| Deck finish | synthetic teak Flexiteek |
| Superstructure deck finish | synthetic teak Flexiteek |
| Cockpit deck finish | synthetic teak Flexiteek |
| Dorades | 4x Nicro Day/Night Plus Stainless-Steel Solar Vents. |
| Window frame | aluminium |
| Window material | polycarbonate |
| Deckhatch | 9 x Flush with covers |
| Fuel tank (litre) | 500 ltr. |
| Freshwater tank (litre) | 1x 280 ltr. tank fore ship and 1x 200 ltr. tank midship |



DUFOUR 500 GRAND LARGE

| | |
|------------------------------|--|
| Level indicator (freshwater) | yes |
| Blackwater tank (litre) | polyethylene 2x 50 ltr. |
| Blackwater tank extraction | deck extraction + pump |
| Wheel steering | cable steering 2x Lewmar - 5 spokes double |
| Emergency tiller | yes |

ACCOMMODATION

| | |
|-------------------------|--|
| Cabins | 4 |
| Berths | 8 |
| Interior | oak |
| Floor | wood |
| Open cockpit | yes |
| Saloon | yes |
| Headroom saloon (m) | 2,04 mtr. |
| Heating | diesel ducted hot air Eberspächer |
| Air-conditioning | reverse cycle airco Cruisair |
| Chart table | With reading light |
| Aft Cabin | 2x |
| Galley | yes |
| Countertop | corian light gray / beige |
| Sink | stainless steel double |
| Cooker | calor gas Eno - 3 burner - stainless steel |
| Oven | In cooker |
| Microwave | Sharp |
| Fridge | Two in galley and one in the cockpit |
| Freezer | In the saloon |
| Hot water system | 220V + engine |
| Water pressure system | electrical |
| Manual and/or foot pump | Foot pump |
| Dishwasher | Electrolux |
| Owners cabin | French bed forward cabin |



DUFOUR 500 GRAND LARGE

| | |
|-----------------|--|
| Bed length (m) | 2 mtr. |
| Wardrobe | hanging and drawers |
| Toilet | en suite |
| Toilet system | electric Jabsco |
| Wash basin | yes |
| Shower | en suite separate from toilet |
| Guest cabin 1 | double bed port side |
| Bed length (m) | 2 mtr. |
| Wardrobe | hanging and shelves |
| Guest cabin 2 | double bed Starboard |
| Bed length (m) | 2 mtr. |
| Wardrobe | hanging and shelves |
| Guest cabin 3 | bunk bed Starboard |
| Bed length (m) | 2 mtr. |
| Wardrobe | hanging and shelves |
| Bathroom | shared |
| Toilet | Jabsco |
| Toilet system | electric |
| Wash basin | yes |
| Shower | yes |
| Washing machine | Daewoo Electronics |
| Extra info | Plancha grill in cockpit and fridge in cockpit table |

MACHINERY

| | |
|----------------|-------------|
| No of engines | 1 |
| Make | Volvo Penta |
| Type | D3-110 |
| HP | 110 |
| kW | 80.96 |
| Fuel | diesel |
| Year installed | 2014 |



DUFOUR 500 GRAND LARGE

| | |
|--------------------------|--|
| Maximum speed (kn) | 8 |
| Cruising speed (kn) | 7 |
| Engine hours | 972 |
| Engine cooling system | freshwater heat exchanger |
| Drive | V-drive |
| Engine controls | bowden cable |
| Gearbox | hydraulic |
| Bowthruster | electric retractable Side Power new 2023 |
| Exhaust | watercooled |
| Propeller type | folding |
| Propeller blades | 3 |
| Propeller shaft material | stainless steel |
| Shaft lubrication | water |
| Manual bilge pump | yes |
| Electric bilge pump | yes |
| Generator | Panda 8000I |
| Running hours generator | 823 |
| Start battery | 1x 140Ah new 2024 |
| Service battery | 4x 140Ah new 2024 |
| Generator battery | New 2022 |
| Bowthruster battery | New 2022 |
| Battery monitor | Victron Digital Multi control |
| Battery charger | yes |
| Inverter | 12V / 220V 2000W |
| Shorepower | with cable |
| Watermaker | Dessalator D60 DUO - 60-75 Litres per hour - AC & DC Power |

NAVIGATION

| | |
|---------------|---|
| Compass | 2x plastimo Olympic 135 |
| Depth sounder | Data from: 2x Raymarine I70 multi display |
| Log | Data from: 2x Raymarine I70 multi display |



DUFOUR 500 GRAND LARGE

| | |
|-------------------|--|
| Windset | Data from: 2x Raymarine I70 multi display |
| VHF | Raymarine Ray49E - ASN |
| VHF handheld | Icom |
| Autopilot | Raymarine I70 Display + remote control and P70 autopilot |
| Radar | Raymarine digital 18' - 4kw |
| Radar/GPS/plotter | 2x Raymarine Multipose E95 display |
| PC connection | PC interface with USB port |
| AIS transceiver | Raymarine AIS 650 Class B |
| EPIRB | Ocean signal |
| Navigation lights | yes |

EQUIPMENT

| | |
|----------------------------|-----------------------------------|
| Sprayhood with grab rail | New 2021 |
| Bimini | New 2021 |
| Cockpit cushions | 8x |
| Cockpit table | + cover and fridge |
| Bathing platform | Drop-down platform |
| Boarding ladder | stainless steel |
| Gangway | Carbon |
| Deck shower | yes |
| Anchor | Delta Collapsible anchor roller |
| Anchor chain | Appr. 50m |
| Chain counter | yes |
| Windlass | electrical Quick |
| Dinghy | Zodiac new 2022 |
| Outboard | 6pk Mercury new 2017 |
| Outboard support | yes |
| Sea railing | wire |
| Grab rail (superstructure) | teak |
| Railing side opening gates | yes |
| Pushpit | yes |



DUFOUR 500 GRAND LARGE

| | |
|-------------------|------------------------------|
| Pulpit | yes |
| Radar reflector | yes |
| Fenders | yes |
| Mooring lines | yes |
| TV | 22" / TNT / DVD and Soundbar |
| Radio-cd player | Bose audio system |
| Cockpit speakers | Bose |
| Speakers in salon | Bose surround |
| Clock - barometer | yes |
| Fire extinguisher | yes |

RIGGING

| | |
|-------------------------|--------------------------------|
| Rigging | fractional |
| Standing rigging | wire |
| Brand mast | Z-Spar |
| Material mast | aluminium |
| Spreaders | 2 pair |
| Mainsail | Elvstrøm sails |
| Stoway mast | yes |
| Genoa | Elvstrøm sails |
| Genoa furler | Facnor furler below deck |
| Code Zero | 2014 hardly used |
| Removable innerforestay | yes |
| Reefing System | main in-mast furling |
| Boomvang | gasspring |
| Genoa sheetwinches | 2x Lewmar 50 - electric |
| Halyard winches | 2x Lewmar 45 - one SB electric |
| Gennaker pole | aluminium retractable |



DUFOUR 500 GRAND LARGE



DUFOUR 500 GRAND LARGE



DUFOUR 500 GRAND LARGE



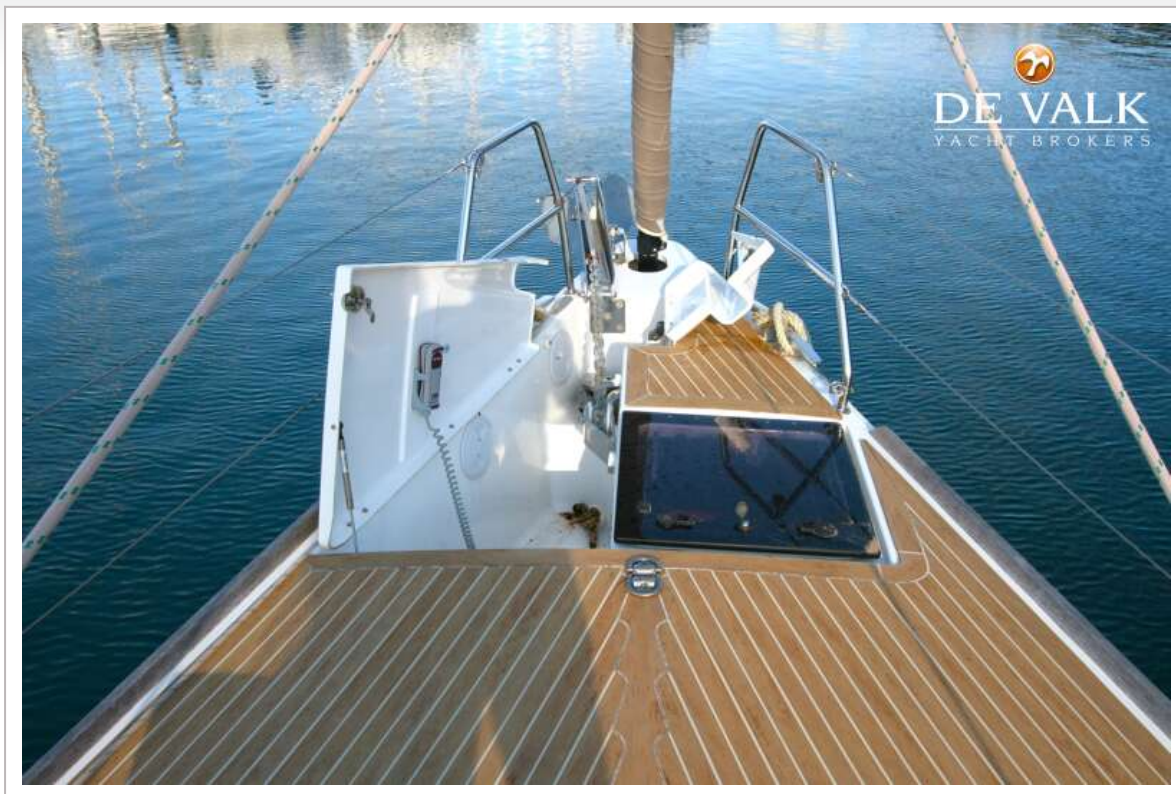
DUFOUR 500 GRAND LARGE



DUFOUR 500 GRAND LARGE



DUFOUR 500 GRAND LARGE



DUFOUR 500 GRAND LARGE



DUFOUR 500 GRAND LARGE



DUFOUR 500 GRAND LARGE



DUFOUR 500 GRAND LARGE



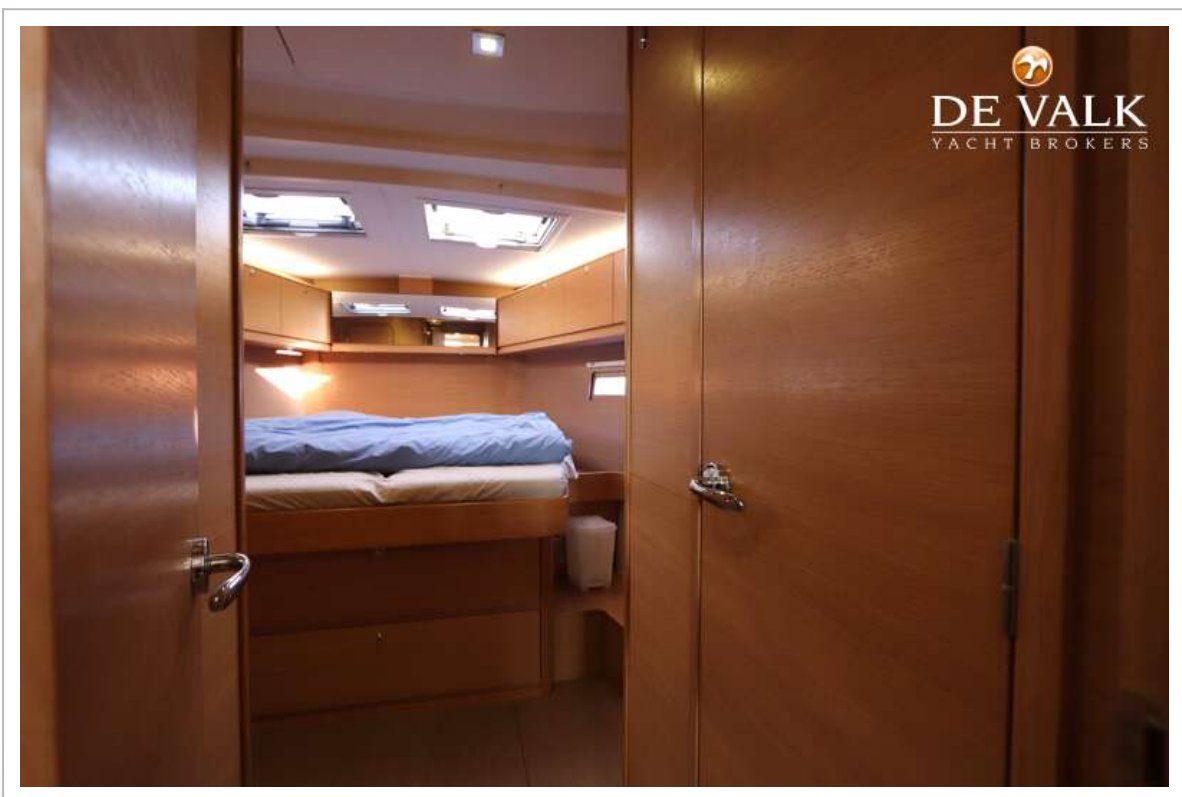
DUFOUR 500 GRAND LARGE



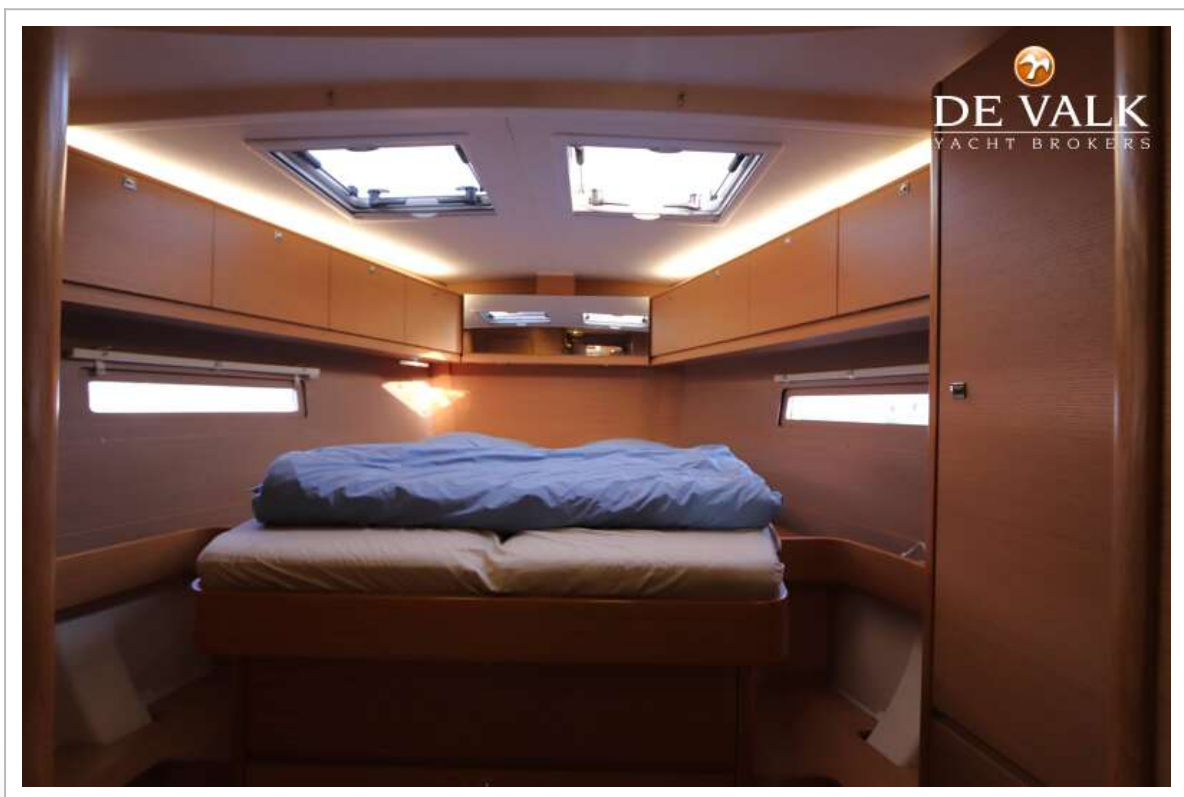
DUFOUR 500 GRAND LARGE



DUFOUR 500 GRAND LARGE



DUFOUR 500 GRAND LARGE



DUFOUR 500 GRAND LARGE



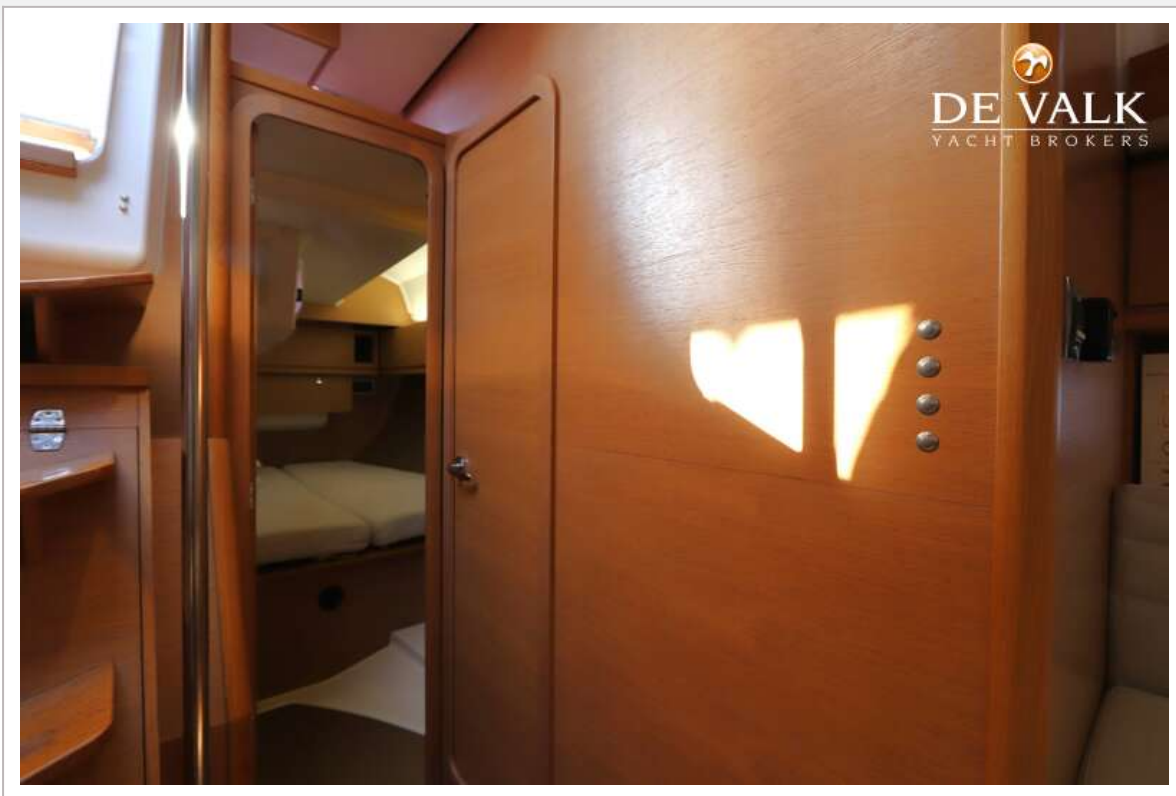
DUFOUR 500 GRAND LARGE



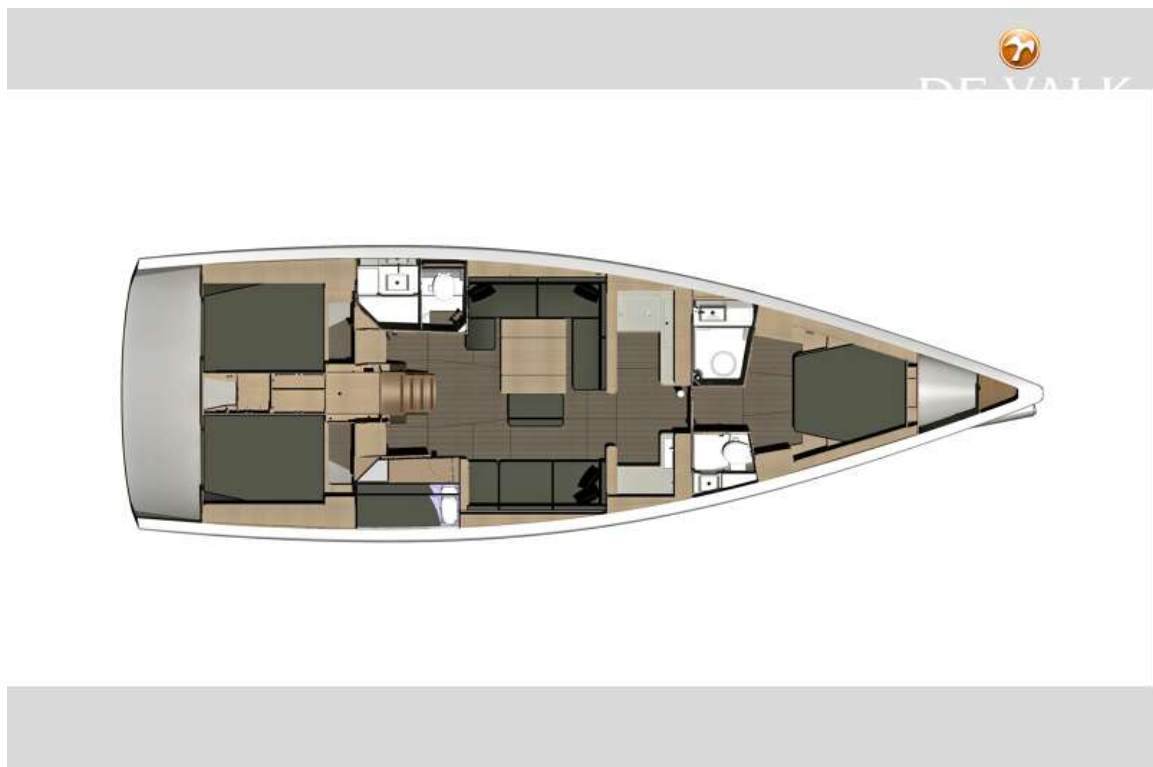
DUFOUR 500 GRAND LARGE



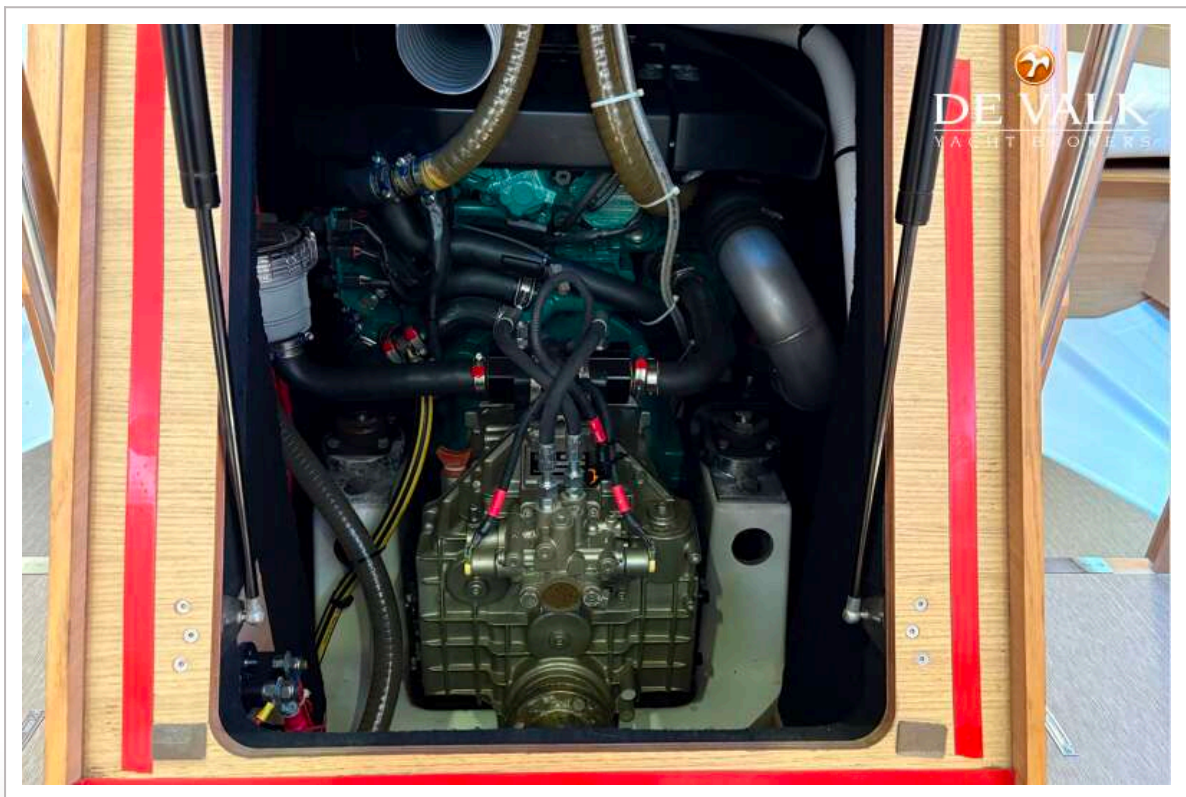
DUFOUR 500 GRAND LARGE



DUFOUR 500 GRAND LARGE



DUFOUR 500 GRAND LARGE



DUFOUR 500 GRAND LARGE



DUFOUR 500 GRAND LARGE

