



ALMTRAWLER 1200 AD

ALMTRAWLER 1200 AD

BROKER'S COMMENTS

The Almtrawler AD design series have been built since the 80's and are still being built today by the famous Jachtwerf De Alm in the Netherlands, Showing just how much this design is being appreciated. This 1200 AD has all that you may expect. Tons of space in a nice Trawler design with a raised pilothouse. Next to the light salon and aft deck, she offers a large flybridge with only 3,50 mtr headway (for the French Canals). Making her the ideal European waterway cruising Trawler. Her current 3rd owner has done some serious upgrades on top of the already impressive option list.

Sjoerd Paddenburg

SPECIFICATIONS

Dimensions	13.20 x 4.15 x 1.35 (m)	Builder	Jachtwerf De Alm
Built	1993	Cabins	2
Material	Steel	Berths	4
Engine(s)	1 x DAF DH825 diesel	Hp/Kw	136.00 (hp), 100.10 (kw)
Asking price	sold (VAT)	Lying	at sales office

CONTACT

Sales office	De Valk Loosdrecht B.V.	Telephone	+31 (0)35 582 90 30
Address	't Breukeleveense Meentje 6 1231LM Loosdrecht / Wijdmeren NL	E-mail	loosdrecht@devalk.nl

DISCLAIMER

These particulars are given in good faith as supplied but cannot be guaranteed.



ALMTRAWLER 1200 AD

GENERAL

Model	ALMTRAWLER 1200 AD
Type	motor yacht
LOA (m)	13,20
Beam (m)	4,15
Draft (m)	1,35
Air draft (m)	3,50
Headroom (m)	1,94
Year built	1993
Builder	Jachtwerf De Alm
Country	The Netherlands
Designer	Jachtwerf De Alm
Displacement (t)	18
Hull material	steel
Hull colour	blue
Hull shape	hard chine
Keel type	long keel
Superstructure material	steel
Rubbing strake	rubber
Deck material	steel
Deck finish	non-skid paint
Cockpit deck finish	non-skid paint
Window frame	aluminium Gebo
Window material	tempered glass
Deckhatch	with flyscreen
Portholes	aluminium
Insulation	glasswool
Flybridge	yes
Mast can be lowered	manual
Fuel tank (litre)	steel 2 x 700 ltr
Freshwater tank (litre)	steel 2000



ALMTRAWLER 1200 AD

Blackwater tank (litre)	Approx. 250
Blackwater tank extraction	deck extraction + pump
Wheel steering	hydraulic
Inside helm position	yes
Flybridge helm position	yes
More info on paintwork	The paint system for the hull and topsides needs attention.
Extra info	Headway; 3,50 mtr (with flybridge screen taken off), 3,80 mtr (with flybridge screen mounted), 7,80 mtr (iwth mast up)
Extra info	Large storage/lazarette under the aftdeck.

ACCOMMODATION

Cabins	2
Berths	4
Interior	teak
Open cockpit	yes
Pilot house	Raised pilothouse with sliding doors and staircase to the flybridge.
Deck saloon	With 360 panoramic view and sliding door to the aftdeck.
Headroom saloon (m)	1,94 - 2,00 mtr
Heating	central hot water Kabola B17 Tap (19kW)
Dinette	new upholstery (2020)
Sliding door to aft deck	yes
Galley	U-shape with good cupboard space
Sink	1 x
Cooker	electric Smev 2 burner (220v induction, 2020)
Extractor	yes
Microwave/oven combi	Panasonic (220v)
Fridge	Vitrifrigo with freezer compartment (24v) + seperate Mobicool fridge (24v)
Hot water system	on central heating
Water pressure system	electrical
Owners cabin	double bed



ALMTRAWLER 1200 AD

Bed length (m)	2,00 x 1,60 mtr, headroom 1,98 mtr, with comfort mattress (2020)
Wardrobe	hanging and shelves
Bathroom	shared I (headroom 2,00 mtr)
Toilet	shared
Toilet system	electric Jabsco (24v, 2020)
Wash basin	in the bathroom
Shower	shared
Guest cabin 1	twin single
Bed length (m)	2 x 1,98 x 1,20 mtr, headroom 1,75 mtr
Wardrobe	hanging and shelves
Washing machine	Bosch WVF2000
Extra info	Remote control for the central heating system on phone-app.
Extra info	Uvidis UV light pure filter system for freshwater system

MACHINERY

No of engines	1
Make	DAF
Type	DH825
HP	136
kW	100.10
Fuel	diesel
Year installed	1993
Engine hours	3200
Engine cooling system	freshwater heat exchanger
Drive	shaft
Shaft seal	yes
Engine controls	bowden cable Morse
Gearbox	hydraulic Hurth
Bowthruster	electric Duko (24v)
Sternthruster	electric Duko (24v)



ALMTRAWLER 1200 AD

Exhaust	watercooled
Propeller type	fixed
Propeller blades	yes
Propeller shaft material	stainless steel
Shaft lubrication	water
Electric bilge pump	yes
Bilge alarm	yes
Electrical installation	24v/220v
Generator	silent separator VTE Paguro 4,5kW in box (2021)
Running hours generator	17
Start battery	2 x 70ah (2020)
Service battery	4 x 180ah
Bowthruster battery	yes
Sternthruster battery	yes
Battery monitor	Mastervolt BMV-700
Battery charger	Victron Skylla 24v/75amp
Battery charger/inverter	Victron Multiplus 24v/3000watt/70amp
Solar panel	2 x
Diode battery combiners	yes
Shorepower	with cable
Extra info	Generator has an automatic ship-shorepower change-over relays, the main engine has two alternators.

NAVIGATION

Electric compass	via autopilot
Depth sounder/log	Raymarine (2021)
VHF	Silva S15 + Shipmate RS8300
Autopilot	Raymarine Type 1 hydraulic (2021)
Rudder angle indicator	VDO
GPS	Raymarine (2021)
Plotter	Raymarine Axiom 12" (2021)



Electronic chart(s)	yes
AIS receiver	(2021)
Camera	Raymarine, rearview in plotter (2021)
Navigation lights	yes

EQUIPMENT

Fixed windscreen	On flybridge, can be taken off for lowering headway.
Cockpit cover	(winter cover)
Bathing platform	yes
Boarding ladder	stainless steel
Deck shower	hot+cold
Anchor	Pool
Anchor chain	yes
Windlass	electrical Lofrans Tigress (24v)
Capstan	Lofrans Tigress (24v)
Dinghy	rigid inflatable Brig F330 (2020)
Outboard	Suzuki 20hp 4-stroke (2020)
Davits	stainless steel
Davits controls	manual
Sea railing	stainless steel
Grab rail (superstructure)	stainless steel
Railing side opening gates	2 x
Pulpit	yes
Life raft	valise (or bag) Plastimo Cruiser 6
Life raft (pers)	6
Last life raft survey	needs service
Lifebuoy	yes
Wiper	4 x
Horn	yes
Fenders	yes
Mooring lines	yes



TV

Samsung (no receiver module)

Radio-cd player

Panasonic (DAB) + remote



ALMTRAWLER 1200 AD



ALMTRAWLER 1200 AD



ALMTRAWLER 1200 AD



ALMTRAWLER 1200 AD



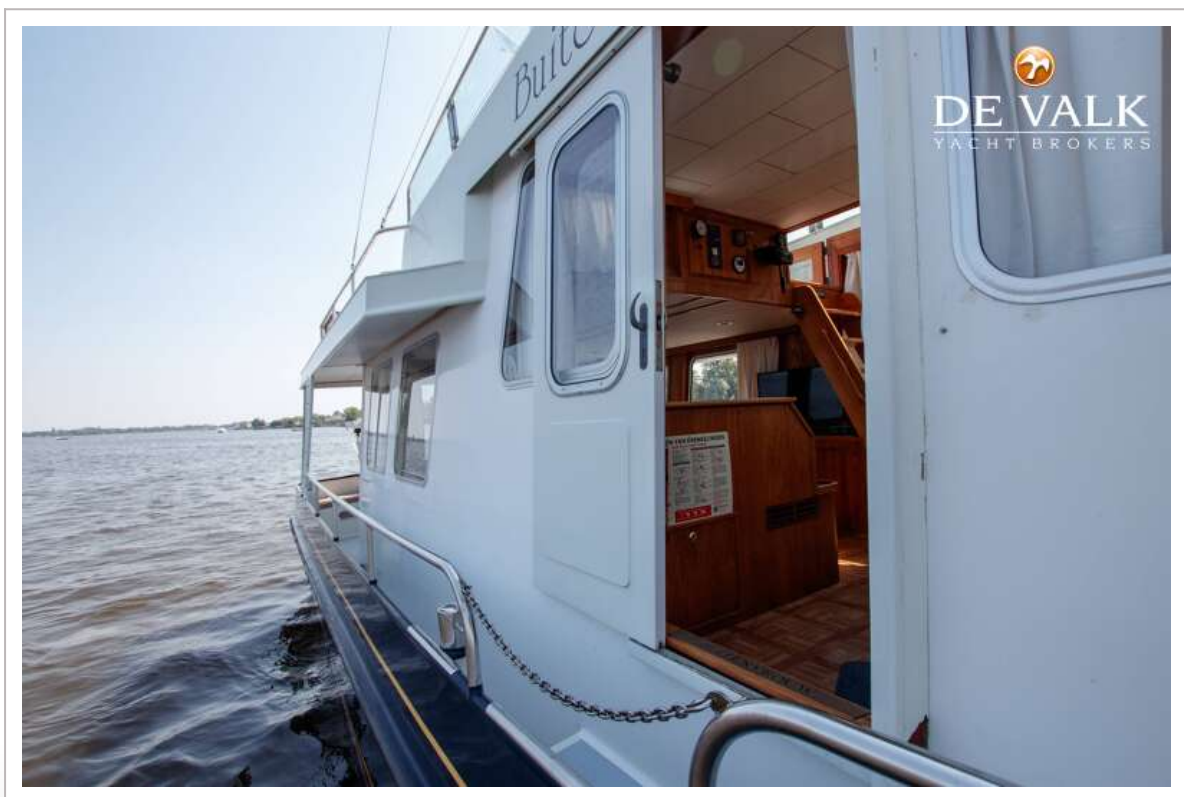
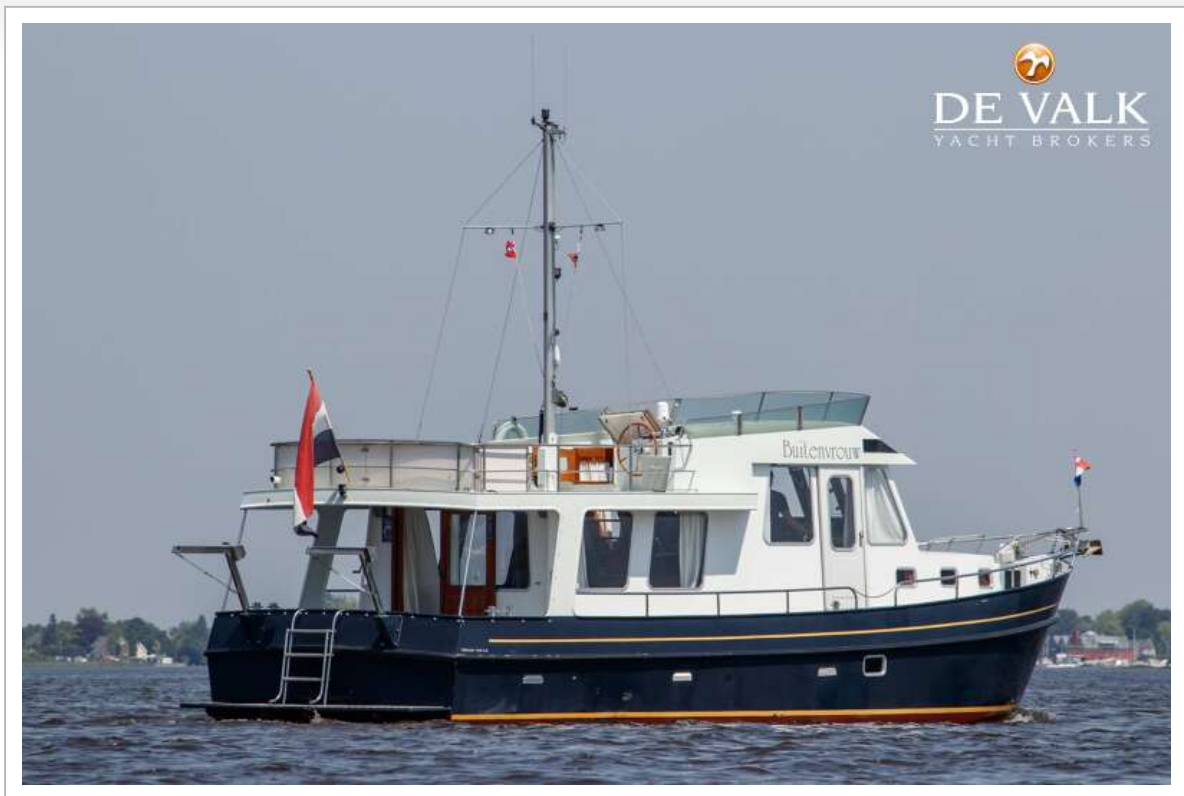
ALMTRAWLER 1200 AD



ALMTRAWLER 1200 AD



ALMTRAWLER 1200 AD



ALMTRAWLER 1200 AD



ALMTRAWLER 1200 AD



ALMTRAWLER 1200 AD



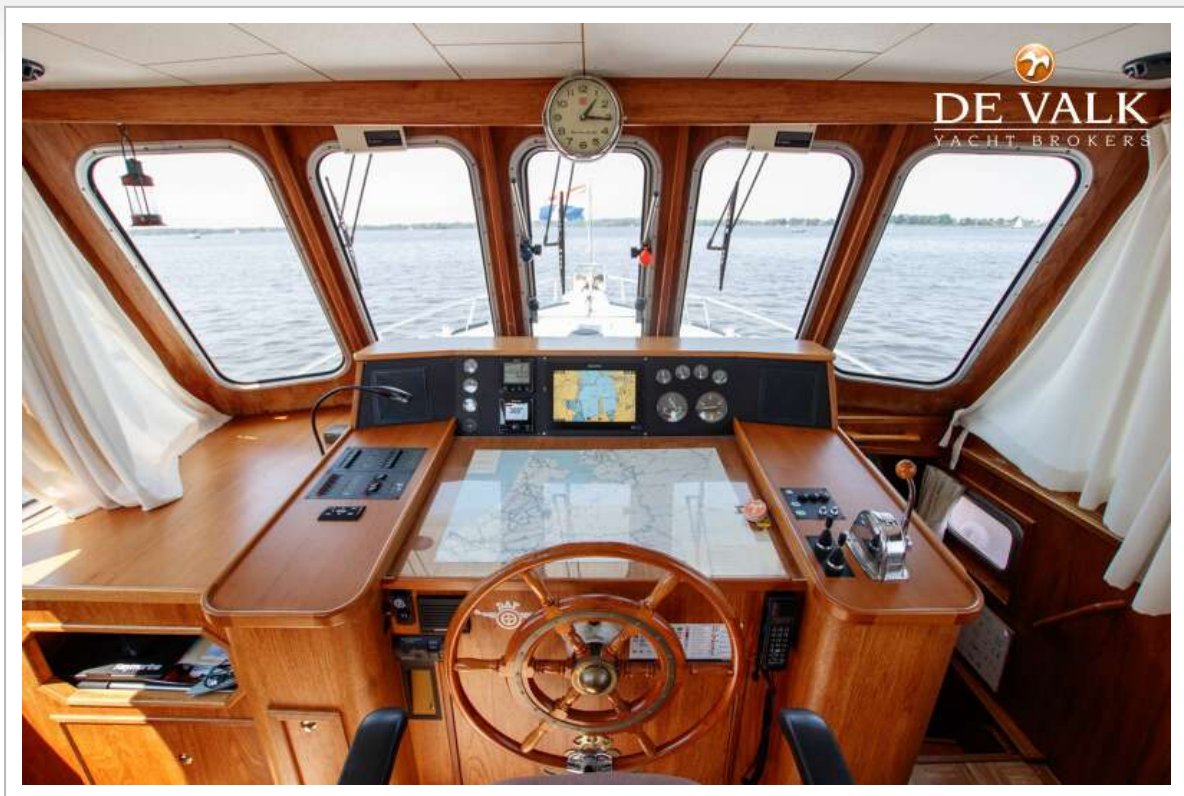
ALMTRAWLER 1200 AD



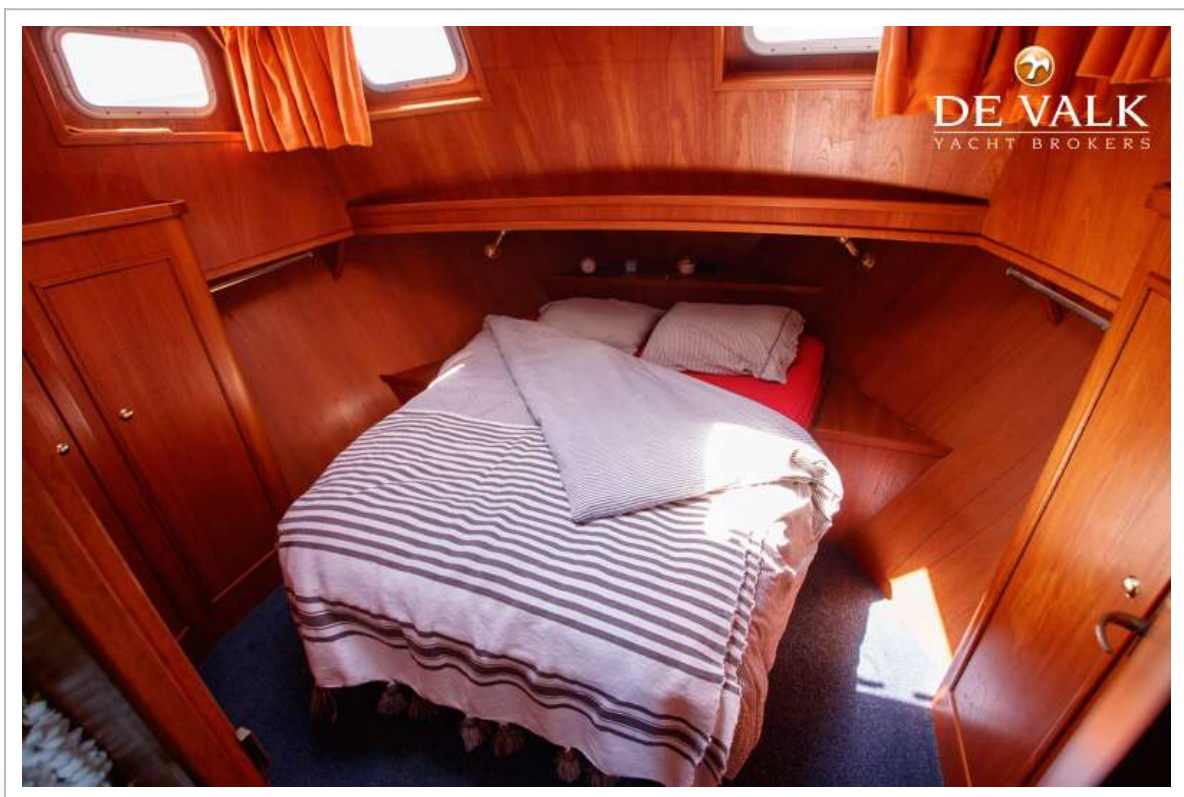
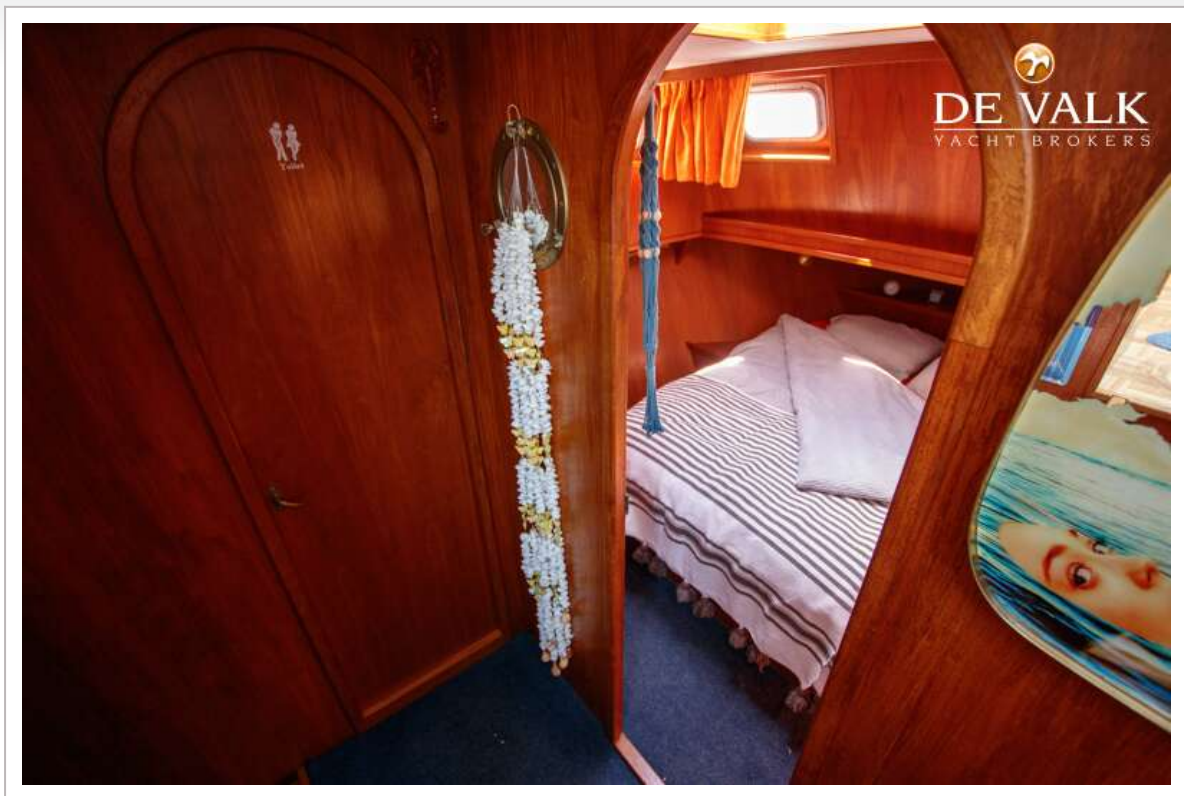
ALMTRAWLER 1200 AD



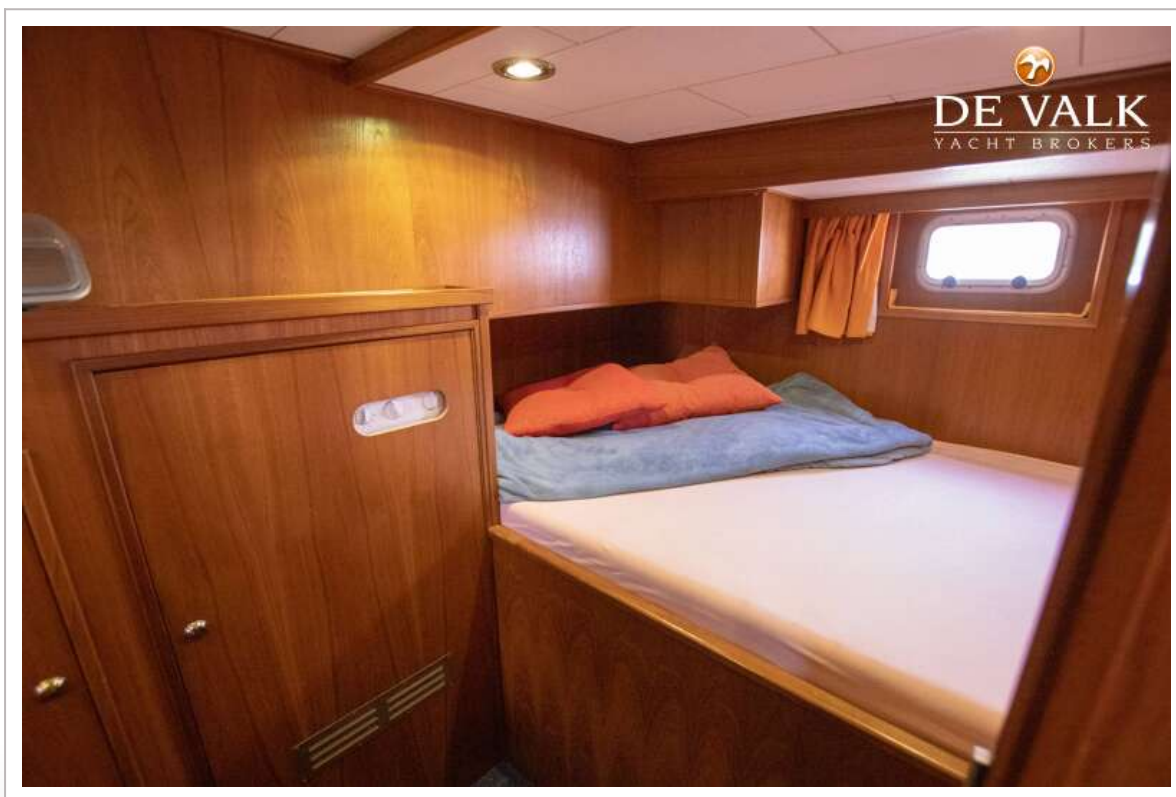
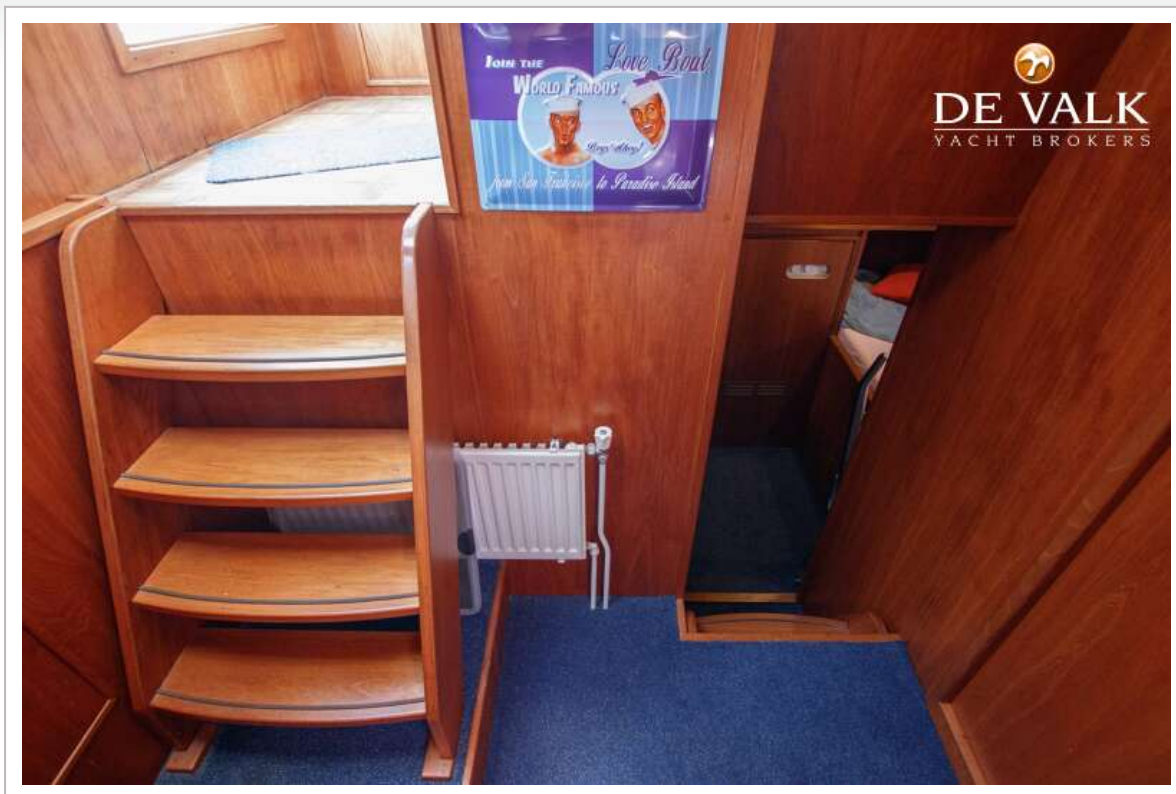
ALMTRAWLER 1200 AD



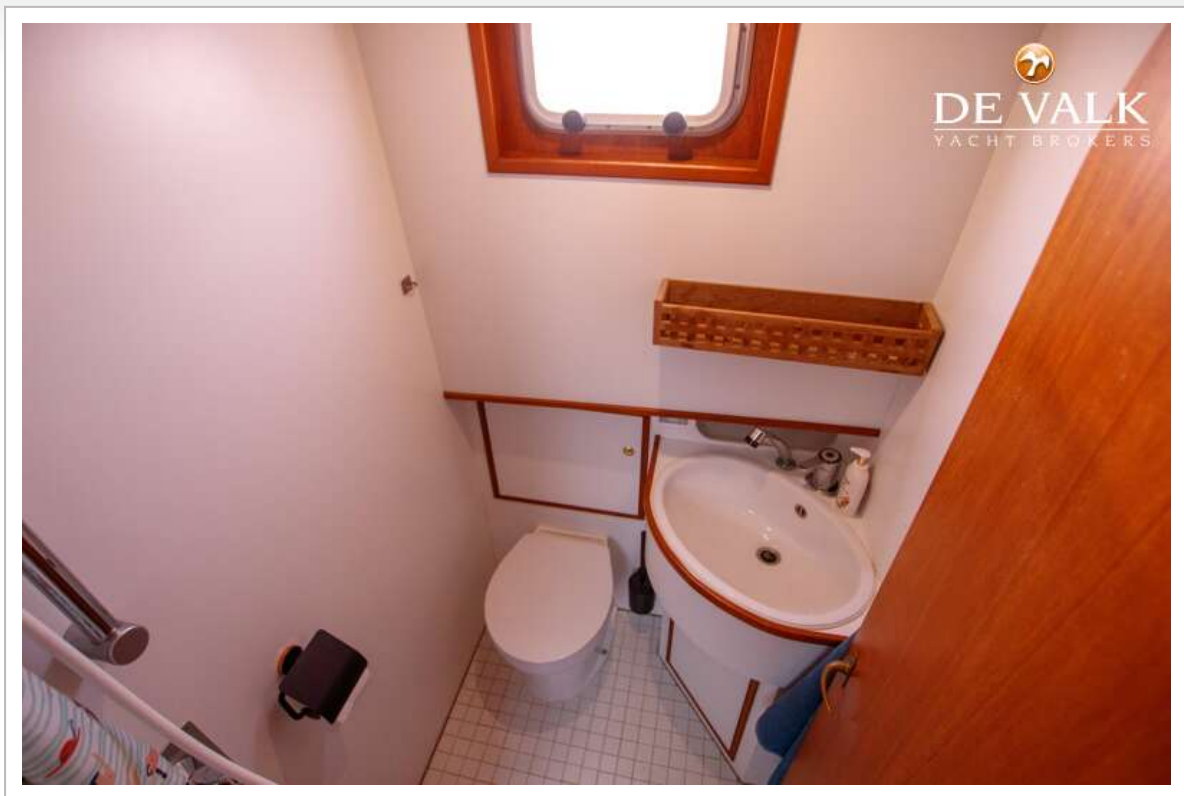
ALMTRAWLER 1200 AD



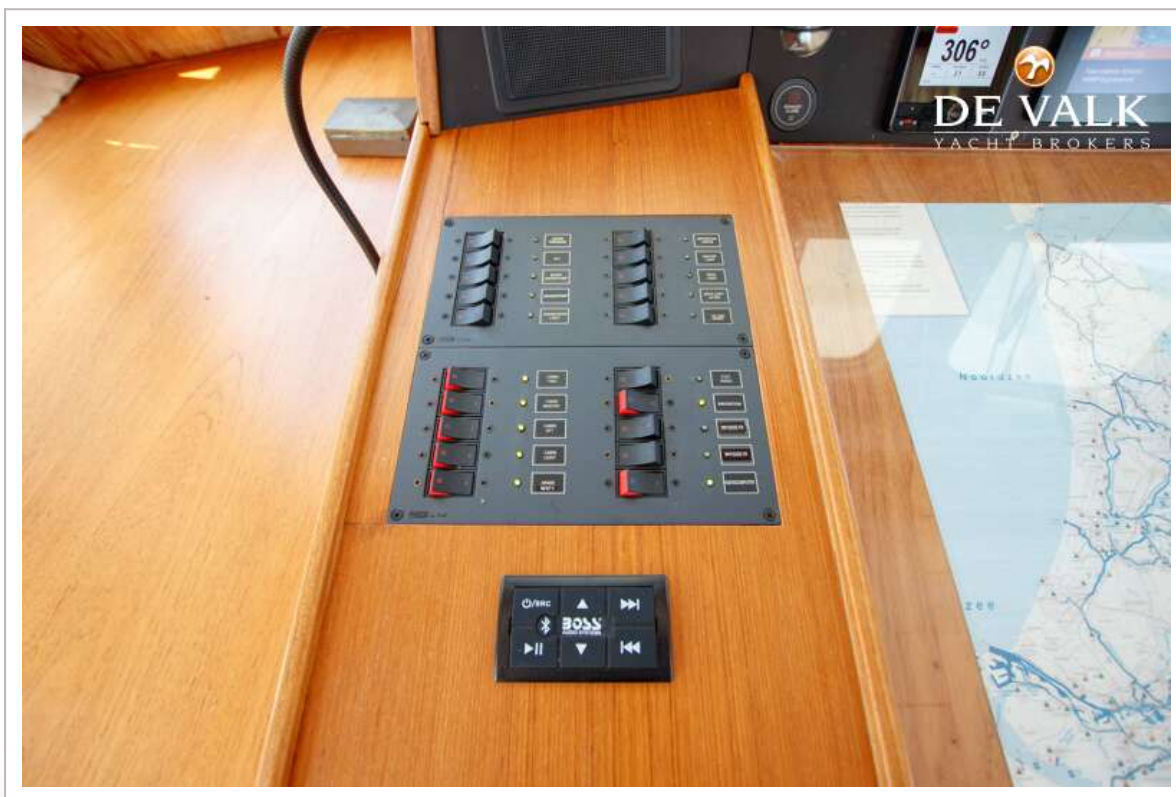
ALMTRAWLER 1200 AD



ALMTRAWLER 1200 AD



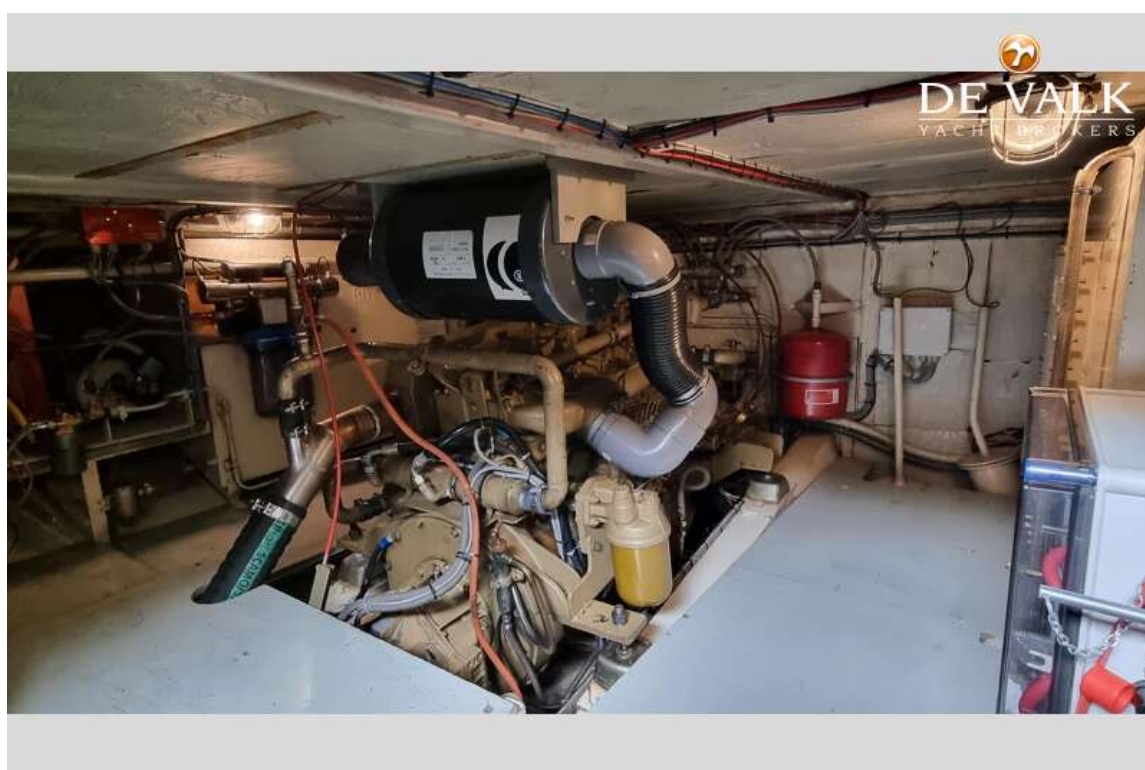
ALMTRAWLER 1200 AD



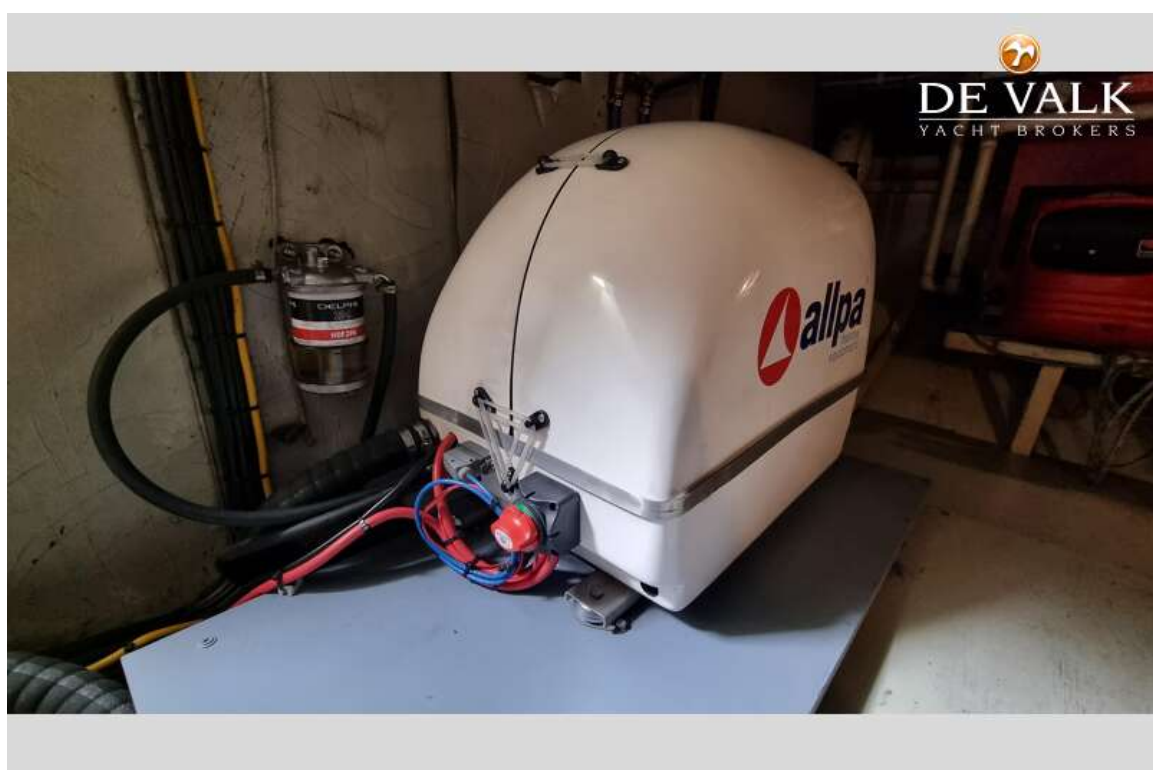
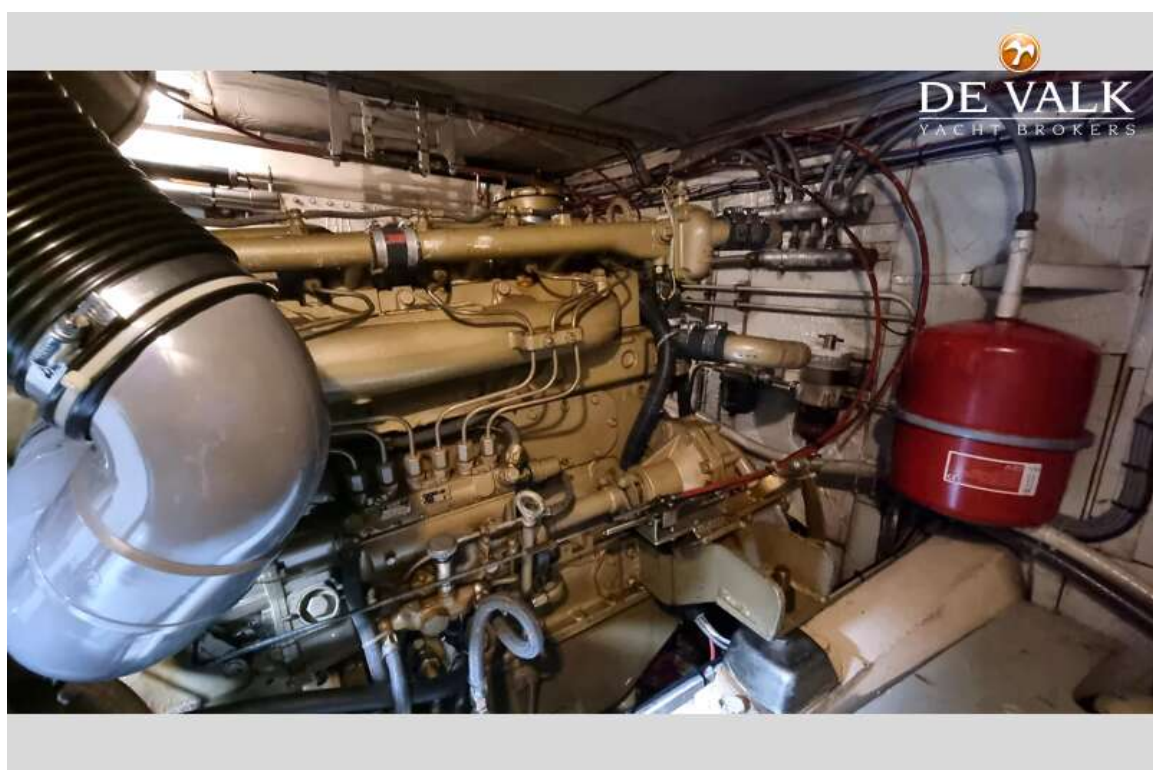
ALMTRAWLER 1200 AD



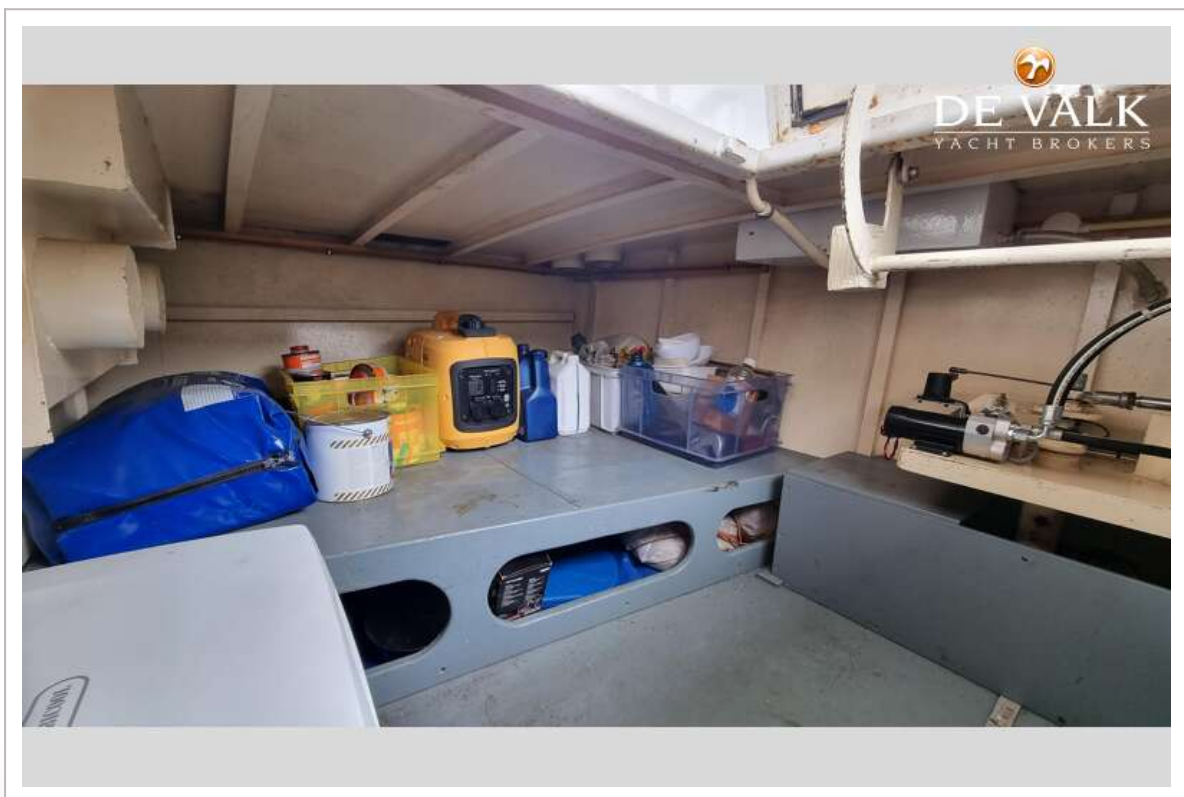
ALMTRAWLER 1200 AD



ALMTRAWLER 1200 AD



ALMTRAWLER 1200 AD



ALMTRAWLER 1200 AD

