



BOARNCRUISER 60 RETRO LINE



BOARNCRUISER 60 RETRO LINE

BROKER'S COMMENTS

How about the beautiful classic lines of the Boarncruiser 60 Retro line? For 60 feet, despite her graceful lines, a very spacious live-on-board yacht. She offers all the comfort of home: a wonderful bright salon, a spacious owners' cabin and 2 guest cabins. Central heating, airconditioning, double glazing and insulation make a 365 days stay very pleasant. Also 2 economical engines, hydraulic bow and stern thruster for easy manoeuvring and stabilizers for maximum comfort at sea. Service done Spring 2025; ready to leave from Cartagena.

Willem Koopmans

SPECIFICATIONS

Dimensions	18.00 x 5.20 x 1.55 (m)	Builder	Boarnstream Shipyard
Built	2008	Cabins	3
Material	Steel	Berths	6
Engine(s)	2 x Perkins M225 TI diesel	Hp/Kw	2 x 222.00 (hp), 163.39 (kw)
Asking price	€ 500.000 (VAT Paid)	Lying	contact sales office

CONTACT

Sales office	De Valk Costa Blanca	Telephone	+34 96 50 21 569
Address	Costa Blanca Region 03730 Javea Alicante ES	E-mail	costablanca@devalk.nl

DISCLAIMER

These particulars are given in good faith as supplied but cannot be guaranteed.



BOARNCRUISER 60 RETRO LINE

GENERAL

Model	BOARNCRUISER 60 RETRO LINE
Type	motor yacht
LOA (m)	18,00
Beam (m)	5,20
Draft (m)	1,55
Air draft (m)	7,35
Air draft min (m)	4,20
Headroom (m)	2,00
Year built	2008
Launched	2008
Builder	Boarnstream Shipyard
Country	The Netherlands
Designer	Boarnstream Shipyard
Displacement (t)	50
CE norm	A
Hull material	steel
Hull colour	blue Paint in good condition, partly redone Spring 2025
Hull thickness (mm)	6
Hull shape	round-bilged With tulip bow
Superstructure material	steel
Superstructure (mm)	5
Deck material	steel
Deck finish	teak
Superstructure deck finish	teak
Cockpit deck finish	teak
Antifouling (year)	May 2025
Window frame	aluminium
Window material	double glazing
Deckhatch	yes
Portholes	7x on each side of hull



BOARNCRUISER 60 RETRO LINE

Insulation	foam
Radar arch	collapsible
Fuel tank (litre)	1295, 2x
Fuel tank 2 (litre)	1647, 2x
Level indicator (fuel tank)	Total fuel capacity 5.9 ton
Fuel daytank (litre)	85
Level indicator (daytank)	yes
Freshwater tank (litre)	stainless steel 1700, 2x 850
Level indicator (freshwater)	yes
Blackwater tank (litre)	600, 2x 300
Blackwater tank extraction	deck extraction + pump
Greywater tank (litre)	2x
Wheel steering	hydraulic
Inside helm position	yes
More info on hull	Epoxy underground, new antifouling May 2025
More info on paintwork	Hull partly resprayed in 2025
Extra info	Spacious, seaworthy, comfortable due to stabilizers & economical

ACCOMMODATION

Cabins	3
Berths	6
Interior	oak Light and dark varnished
Layout	Owner and one guest aft, one guest front
Floor	teak and holly Plus partly carpet
Aft deck	With fixed bench and table
Pilot house	yes
Pilot house/deck saloon	With double glazing
Saloon	With double glazing
Headroom saloon (m)	2
Heating	central heating Kabola B17



BOARNCRUISER 60 RETRO LINE

Air-conditioning	reverse cycle airco Cruisair
Aft Cabin	yes
Dinette	yes
Sliding door to aft deck	Stainless Steel
Galley	yes
Countertop	corian
Sink	stainless steel 1,5
Cooker	induction Whirlpool
Oven	Sharp R 85 ST double grill, hot air
Fridge	yes
Freezer	In fridge
Hot water system	220V or central heating Kabola
Water pressure system	electrical
Dishwasher	AEG
Coffee maker	yes
Owners cabin	double bed
Bed length (m)	2
Wardrobe	hanging/drawers/shelves
Bathroom	en suite
Toilet	en suite
Toilet system	electric
Wash basin	in the bathroom
Shower	en suite
Guest cabin 1	twin single
Bed length (m)	2
Wardrobe	hanging and shelves
Bathroom	shared Incl. washing machine
Toilet	shared
Toilet system	electric
Wash basin	in the bathroom
Shower	shared
Bath tub	shared



BOARNCRUISER 60 RETRO LINE

Guest cabin 2	twin single
Bed length (m)	2
Wardrobe	hanging and shelves
Bathroom	en suite
Toilet	en suite
Toilet system	electric
Wash basin	in the bathroom
Shower	en suite
Washing machine	AEG Electrolux

MACHINERY

No of engines	2
Make	Perkins
Type	M225 TI
HP	222
kW	163.39
Fuel	diesel
Year of overhaul	Full in maintenance service 2025
Maximum speed (kn)	10
Cruising speed (kn)	7
Engine hours	2850 ca.
Engine cooling system	freshwater heat exchanger
Drive	shaft
Engine controls	electrical Morse
Gearbox	hydraulic
Bowthruster	hydraulic Poseidon, 3 blades
Sternthruster	hydraulic Poseidon, 7 blades
Exhaust	watercooled
Propeller type	fixed
Propeller blades	5
Propeller shaft material	stainless steel



BOARNCRUISER 60 RETRO LINE

Electric bilge pump	4x
Bilge alarm	yes
Electrical installation	12/24/228
Generator	wet exhaust Fischer Panda 15 KVA, replaced 2009, serviced April 2025
Batteries	yes
Start battery	2x 225 Ah, Varta, new 2023
Service battery	8x 225 Ah, Varta, new 2023
Electric engine battery	yes
Generator battery	55 Ah
Battery monitor	C-Zone
Battery charger/inverter	2x Victron Multiplus 24V/7000Watt 70A
Solar panel	2x ca 150 watt
Shorepower	with cable
Insulation transformer	Victron 7000W
Stabilizers	2x Vetus, serviced 2023

NAVIGATION

Electric compass	On pilot ST 6002
Depth sounder	yes
Depth sounder/log	Raymarine ST 60 Tridata
Log	yes
Windset	Raymarine ST 60
VHF	Raymarine Ray 240
VHF handheld	Cobra
Autopilot	Raymarine ST6002
Rudder angle indicator	On pilot
Radar	Raymarine Digital
Radar/plotter	needs check on backlight Raymarine 9"
Radar/GPS/plotter	yes
Personal computer	yes



BOARNCRUISER 60 RETRO LINE

PC connection	yes
Electronic chart(s)	MaxSea
AIS transponder	Vesper Marine XB 8000 PL
EPIRB	Ocean, battery expire date 2030
Navigation lights	yes
Extra info	Hydronautica remote control

EQUIPMENT

Bimini	yes
Sun awning	yes
Cockpit cushions	On fixed bench
Cockpit table	Teak on plywood
Cockpit chairs	yes
Bathing platform	With easy launch tender system
Boarding ladder	yes
Transom door	2x and 2 x stairs
Gangway	yes
Deck shower	Hot/cold water
Anchor	60 kg stainless steel
Anchor chain	Galvanized 80 mtr, new 2024
Anchor 2	Fortress
Anchor chain	100 mtr rope
Windlass	hydraulic
Capstan	yes
Deck wash	yes
Dinghy	3d tender, model UL270, 4 persons, new 2020
Outboard	Honda 10 hp, new 2024
Davits	stainless steel Easy launch tender system
Davits controls	manual
Sea railing	yes
Grab rail (superstructure)	yes



BOARNCRUISER 60 RETRO LINE

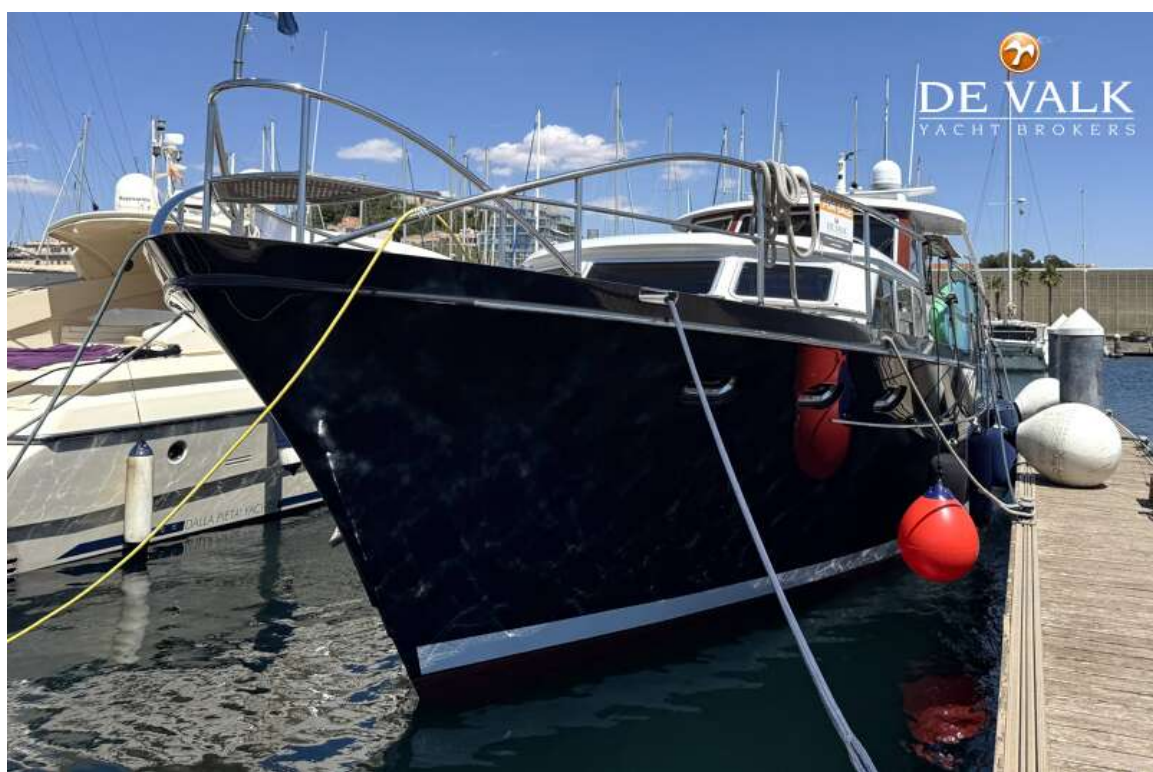
Life raft	container Plastimo Trans Ocean , needs 3 year check
Life raft (pers)	6
Last life raft survey	2023
Lifejackets	6x 165 nm
Wiper	3x
Clearview window	Double glazing
Horn	electric
Fenders	yes
Mooring lines	yes
Spare parts	yes
TV	yes
TV receiver	yes
TracVision ball	KVH, functionality unknown
Radio-cd player	yes
Speakers in salon	B&O
Speakers in cabin	yes
Clock - barometer	yes
Fire extinguisher	Due 2028
Latest extinguisher survey	2025
Extinguisher in engine room	yes



BOARNCRUISER 60 RETRO LINE



BOARNCRUISER 60 RETRO LINE



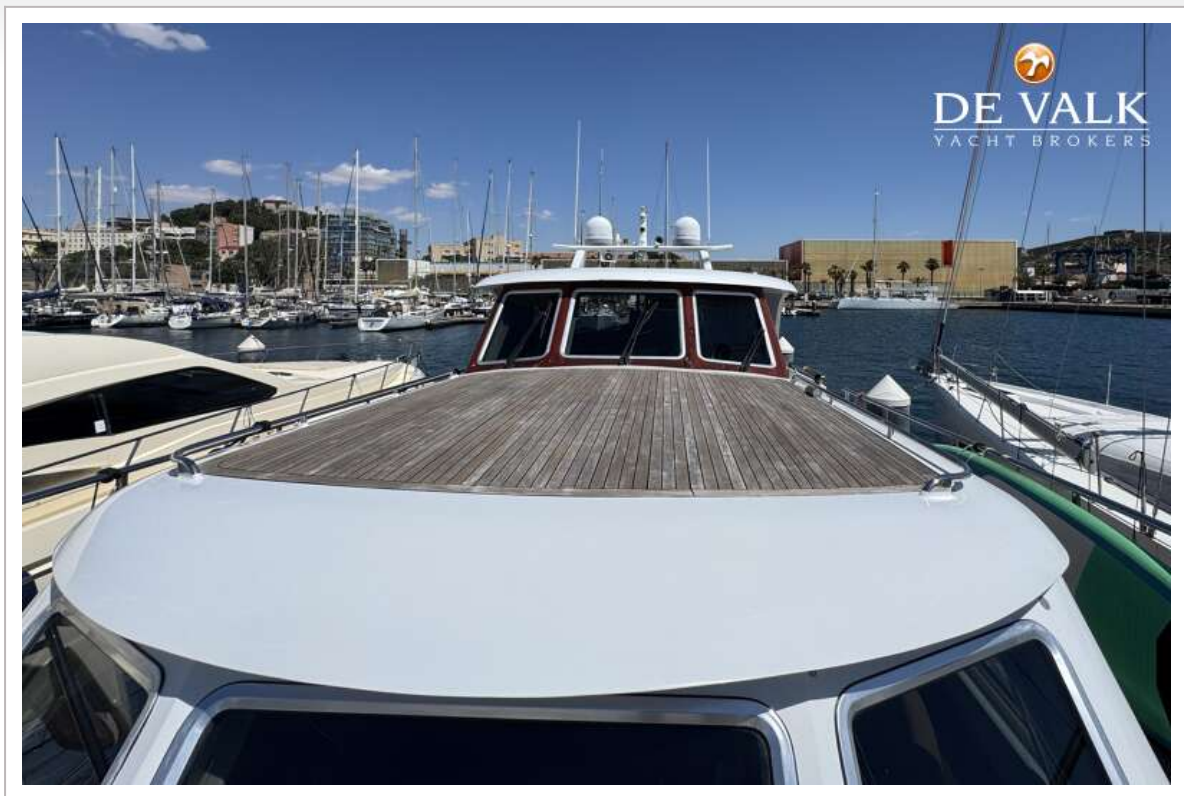
BOARNCRUISER 60 RETRO LINE



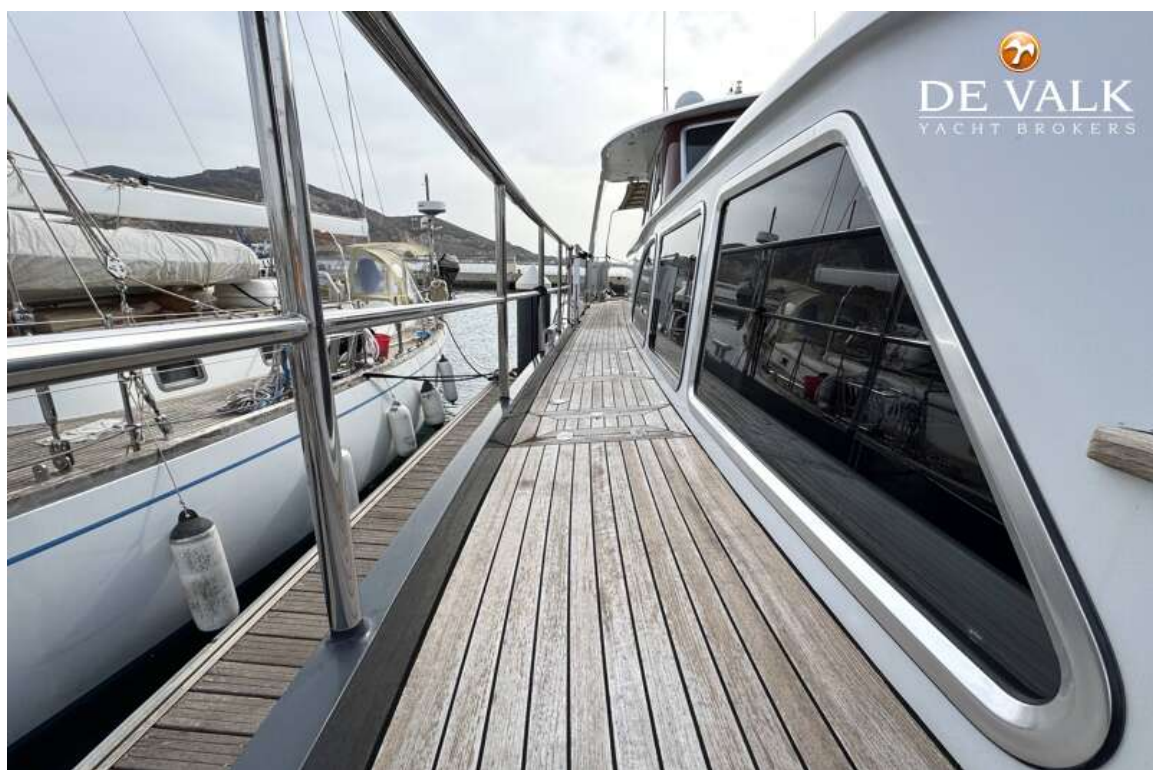
BOARNCRUISER 60 RETRO LINE



BOARNCRUISER 60 RETRO LINE



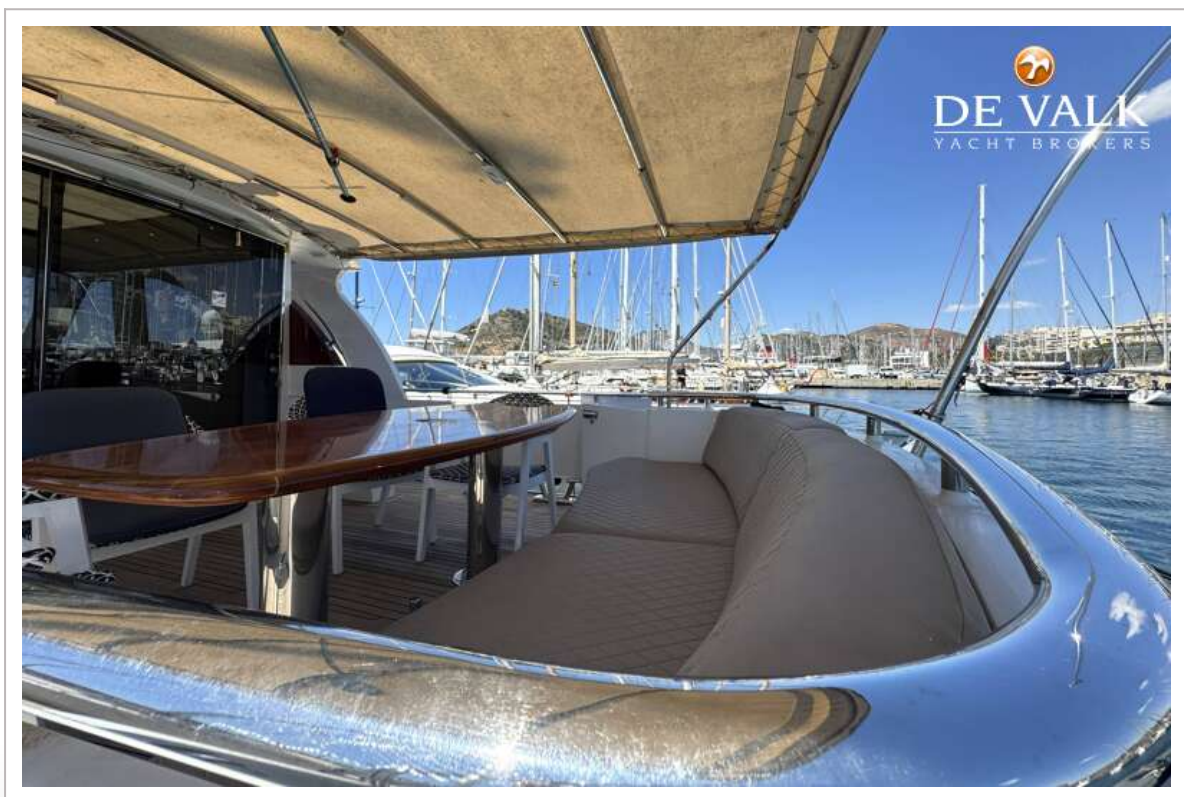
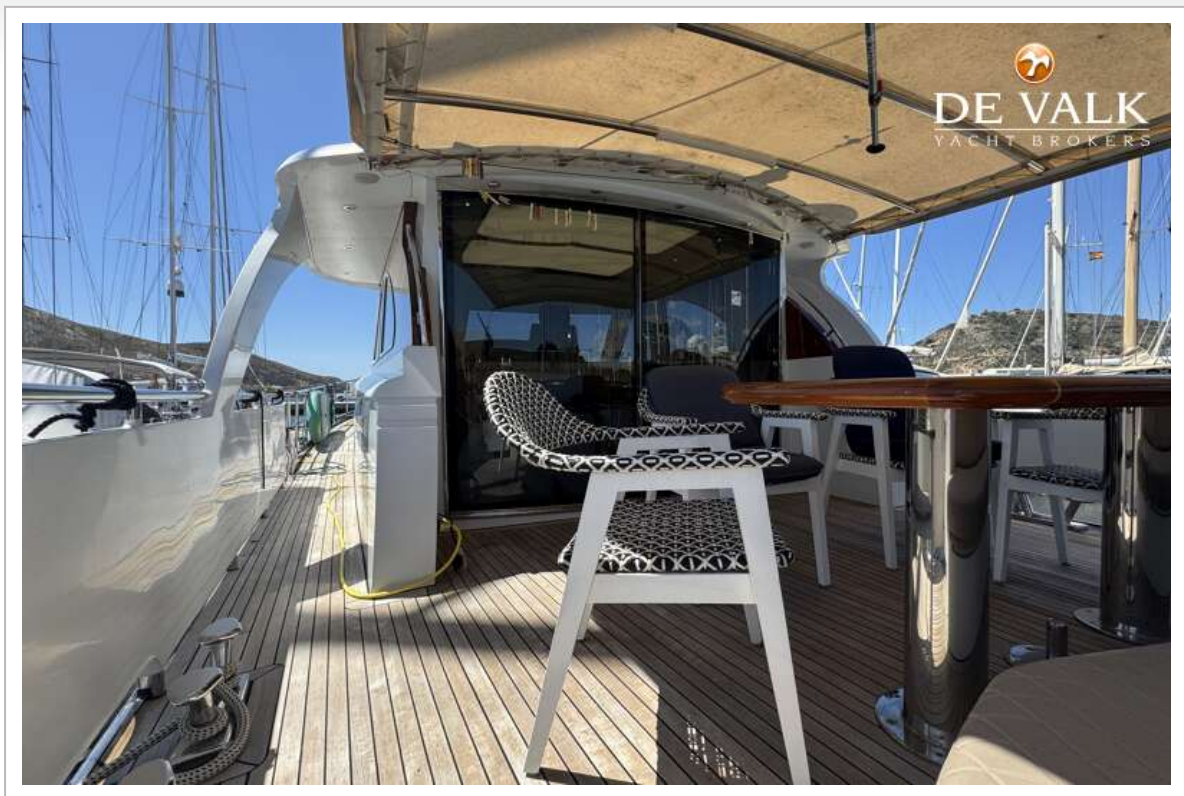
BOARNCRUISER 60 RETRO LINE



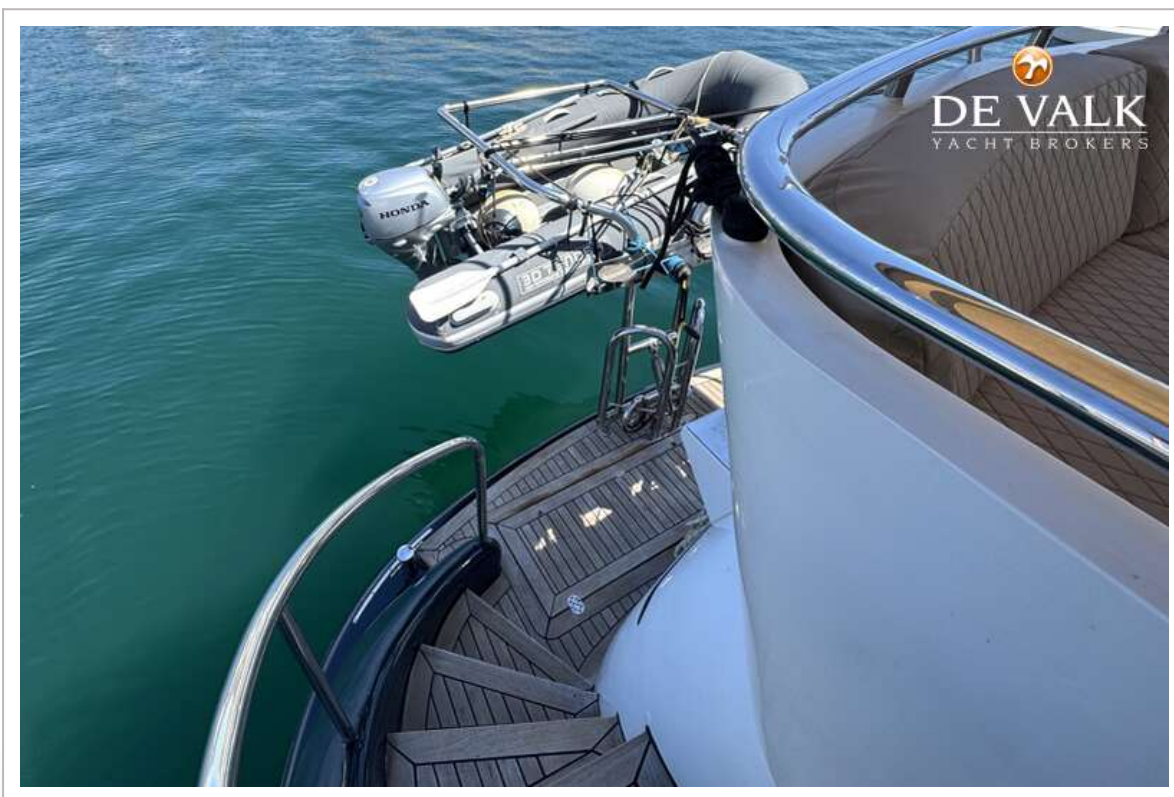
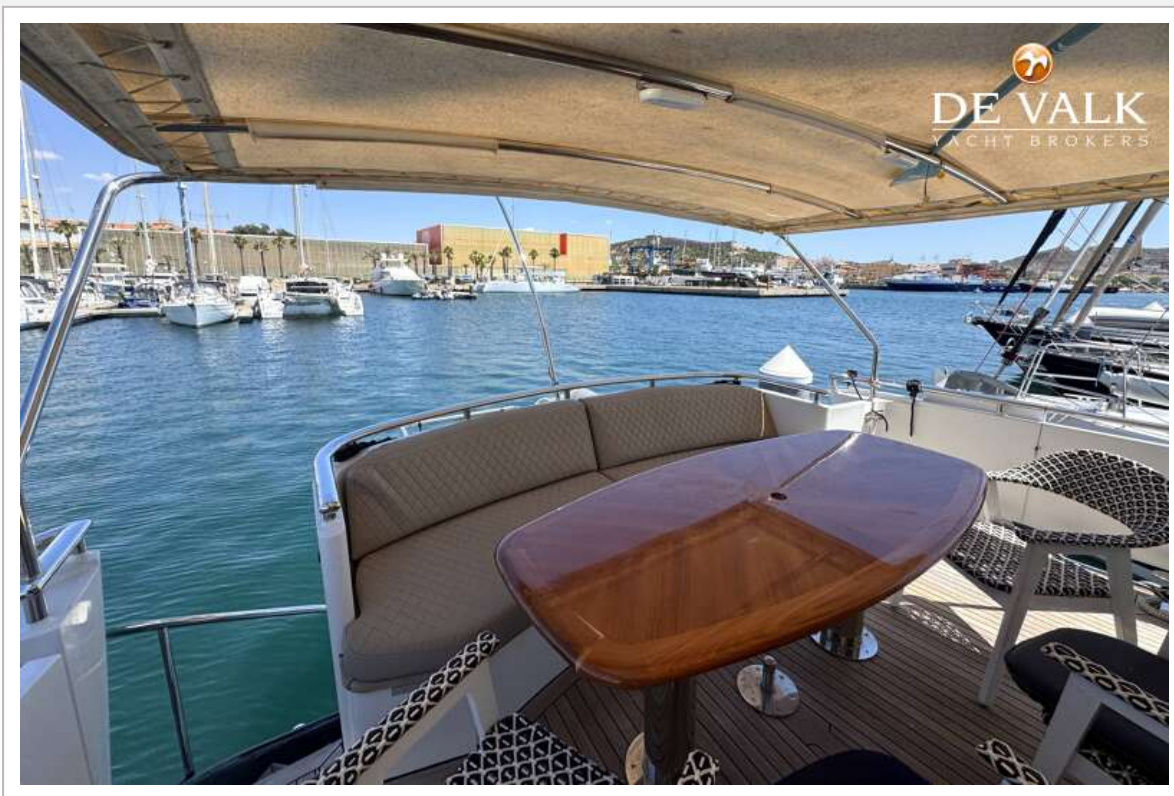
BOARNCRUISER 60 RETRO LINE



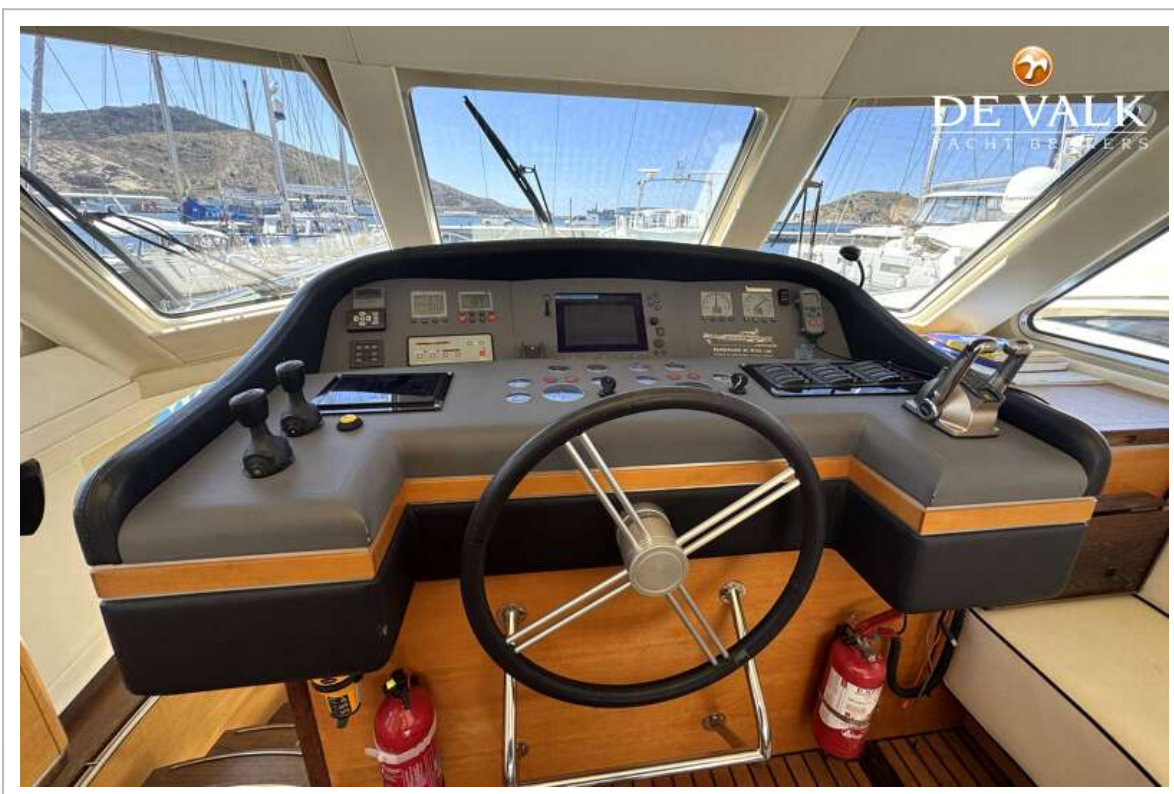
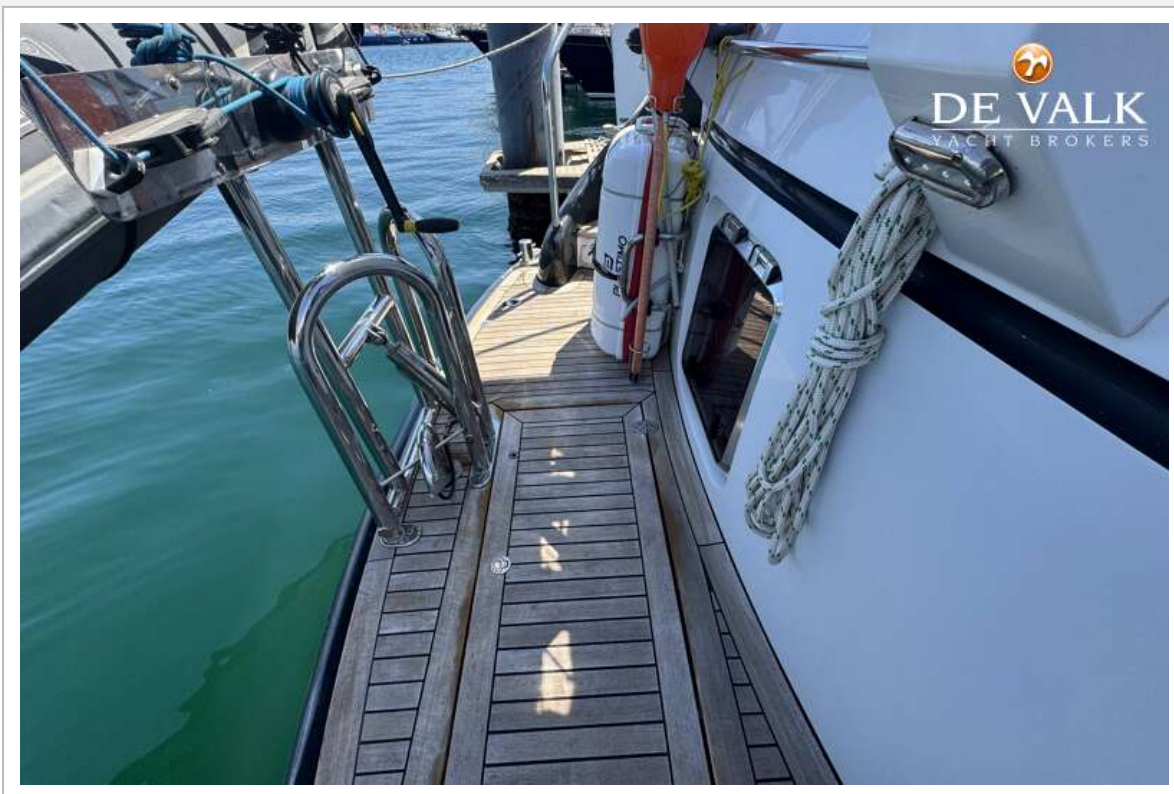
BOARNCRUISER 60 RETRO LINE



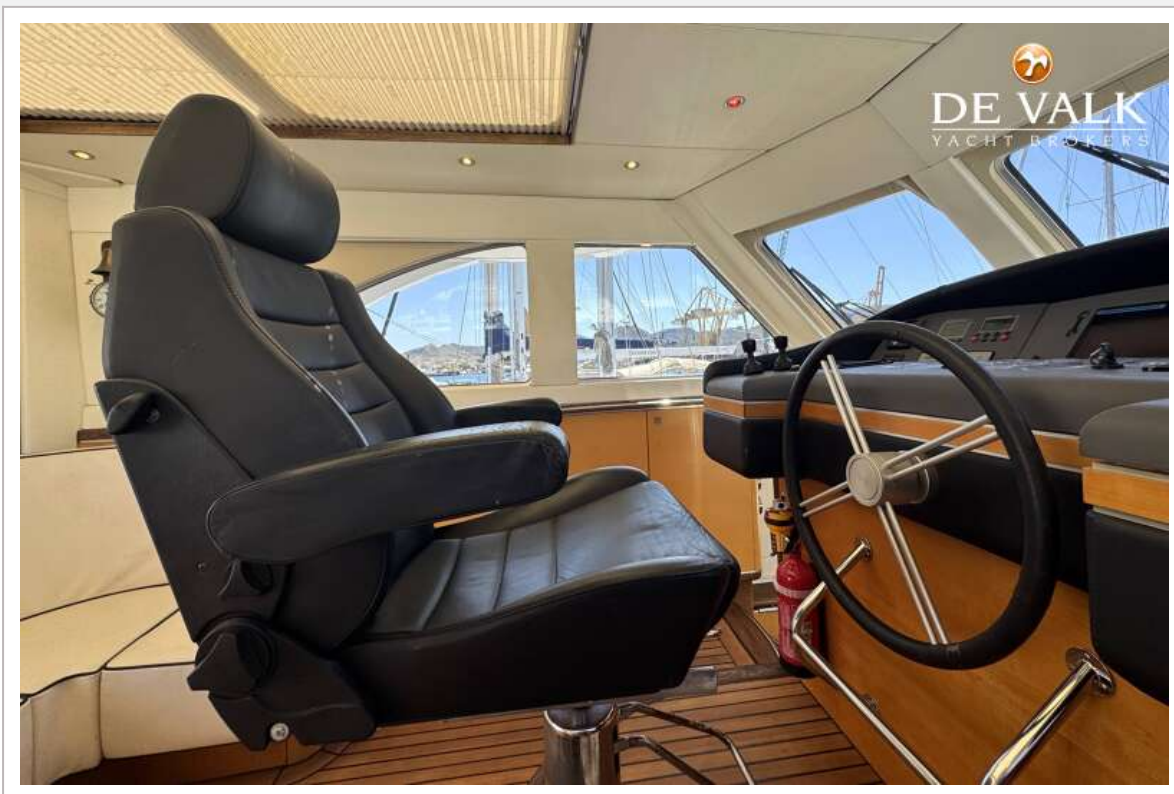
BOARNCRUISER 60 RETRO LINE



BOARNCRUISER 60 RETRO LINE



BOARNCRUISER 60 RETRO LINE



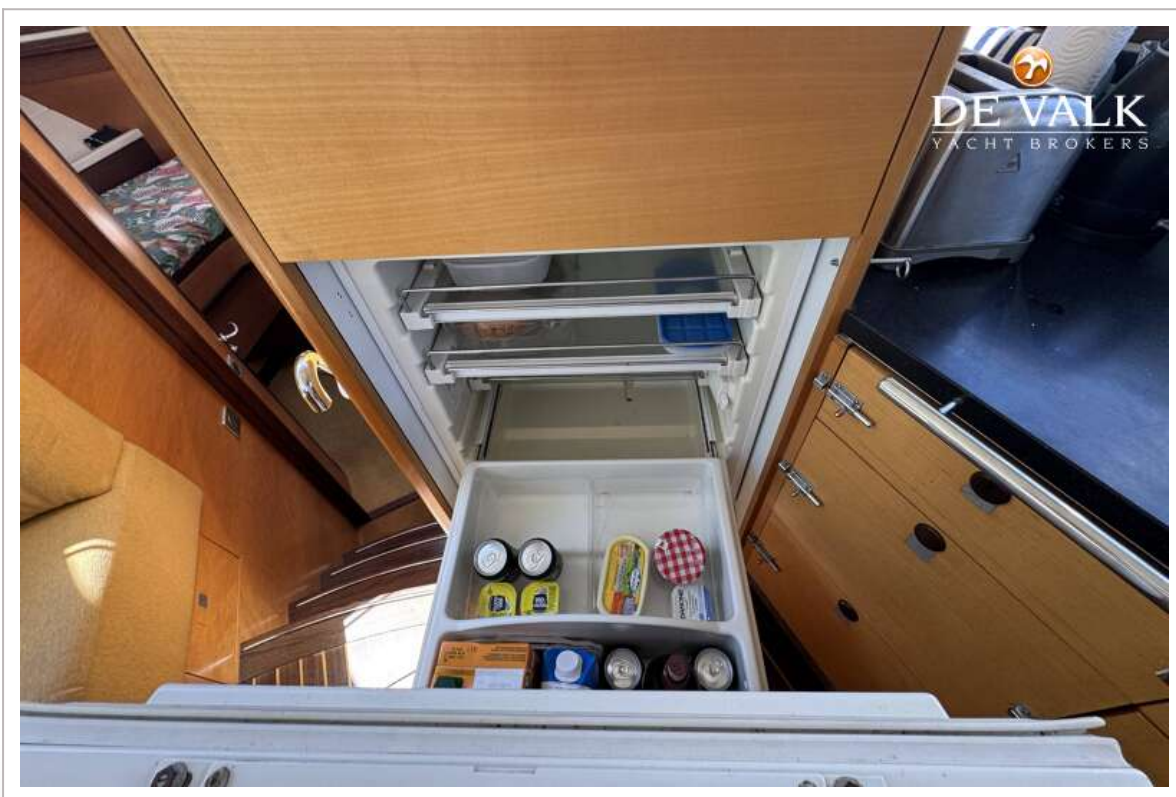
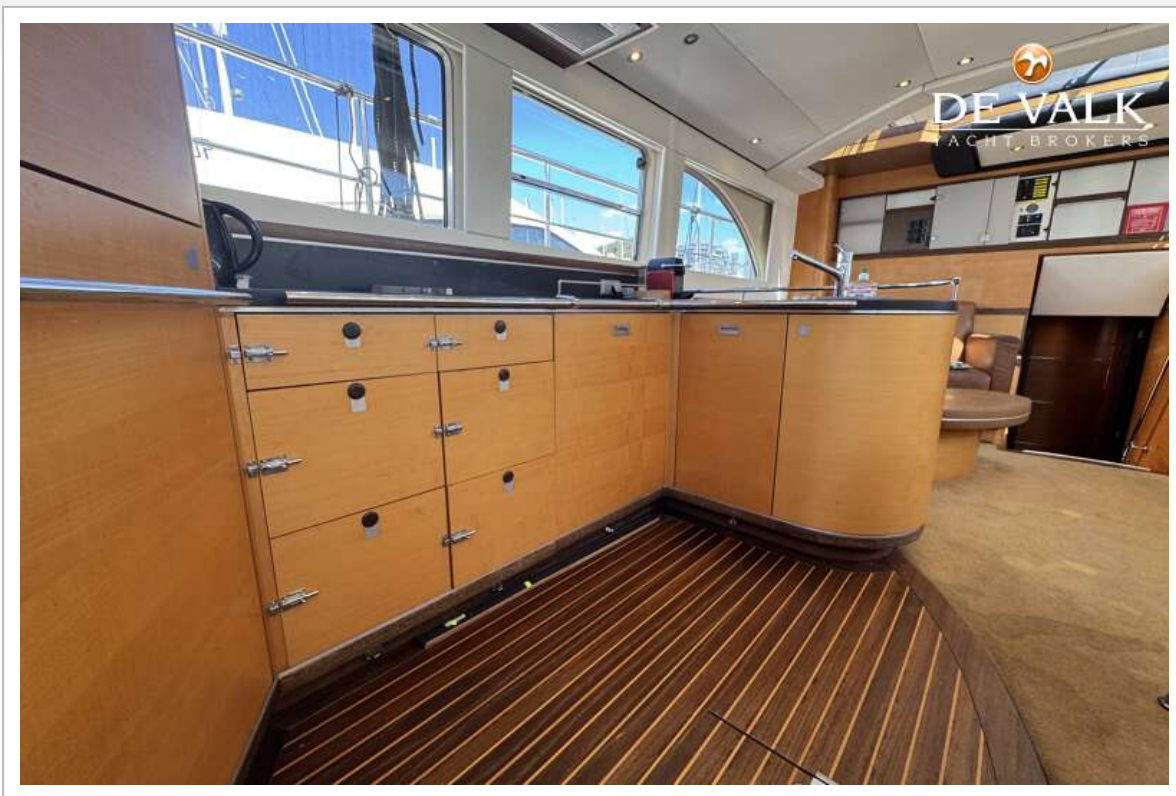
BOARNCRUISER 60 RETRO LINE



BOARNCRUISER 60 RETRO LINE



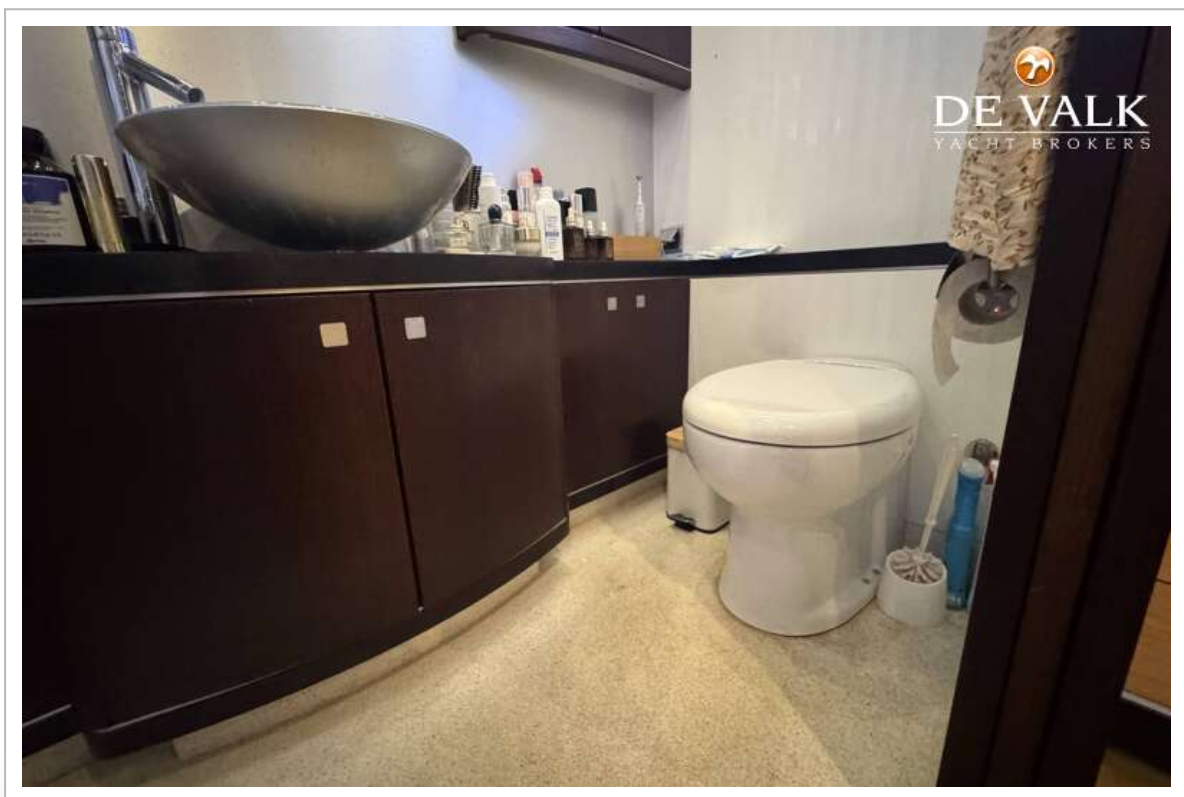
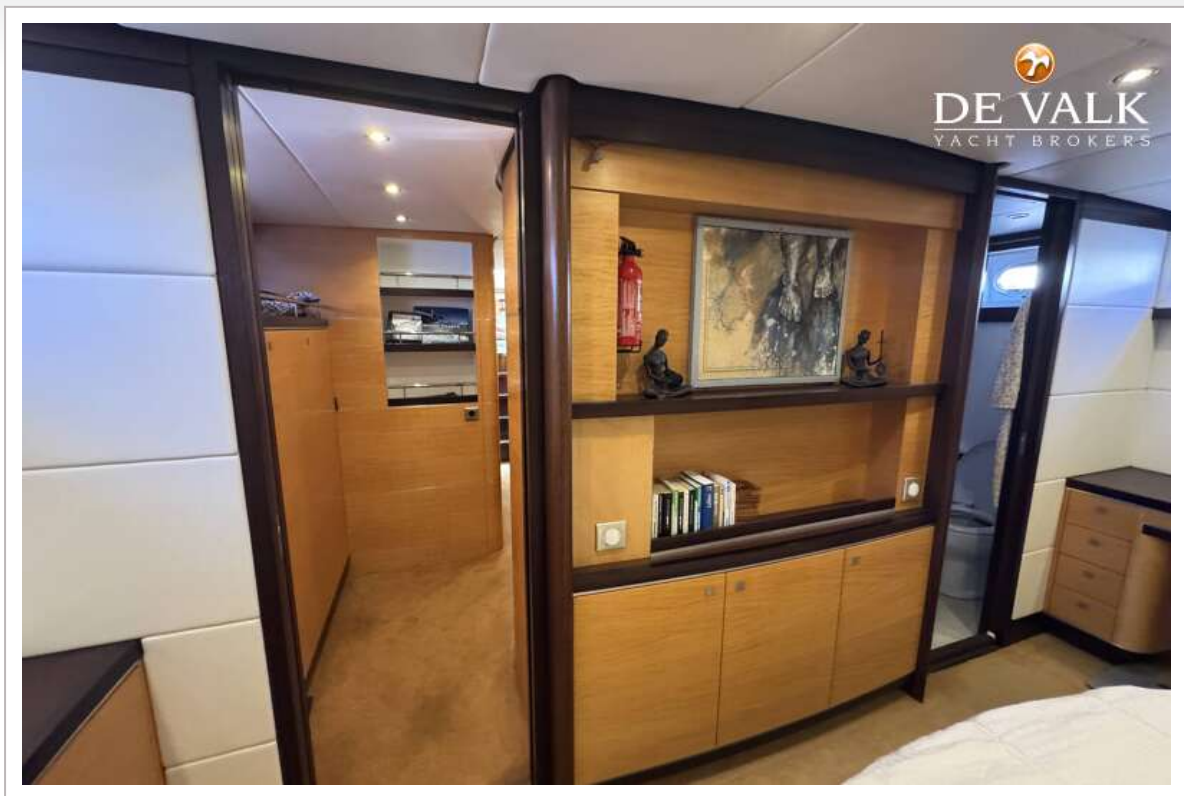
BOARNCRUISER 60 RETRO LINE



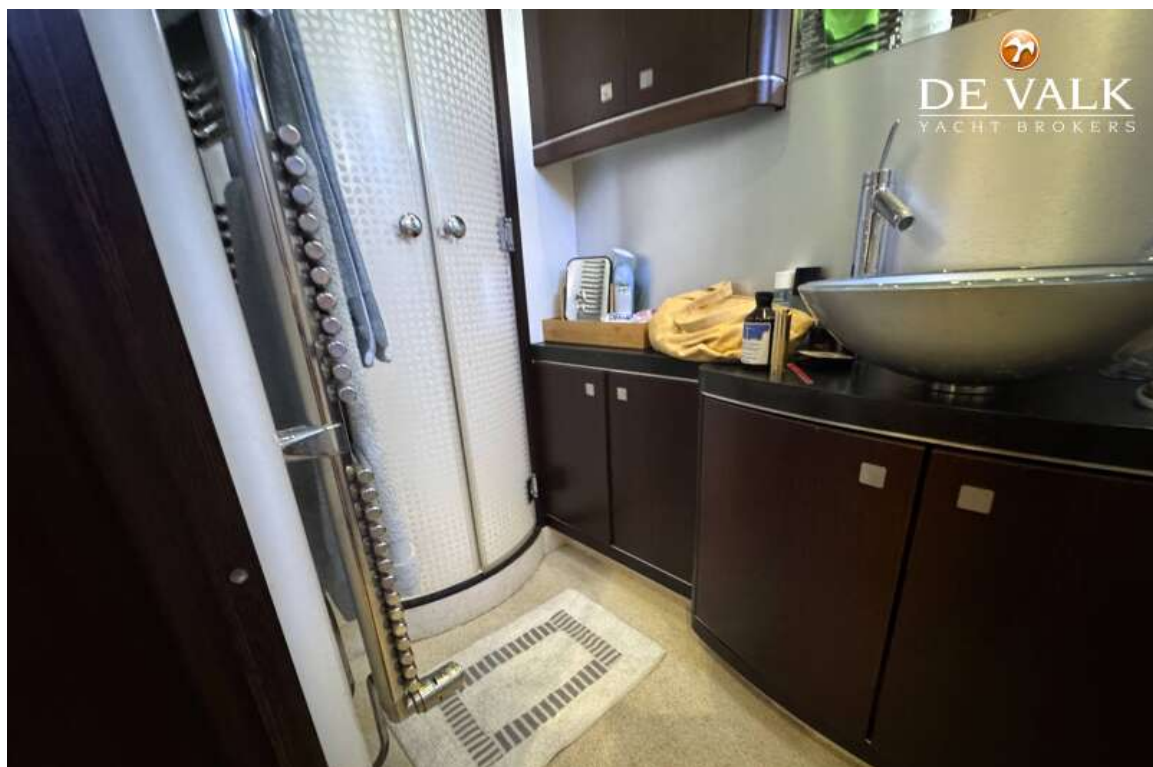
BOARNCRUISER 60 RETRO LINE



BOARNCRUISER 60 RETRO LINE

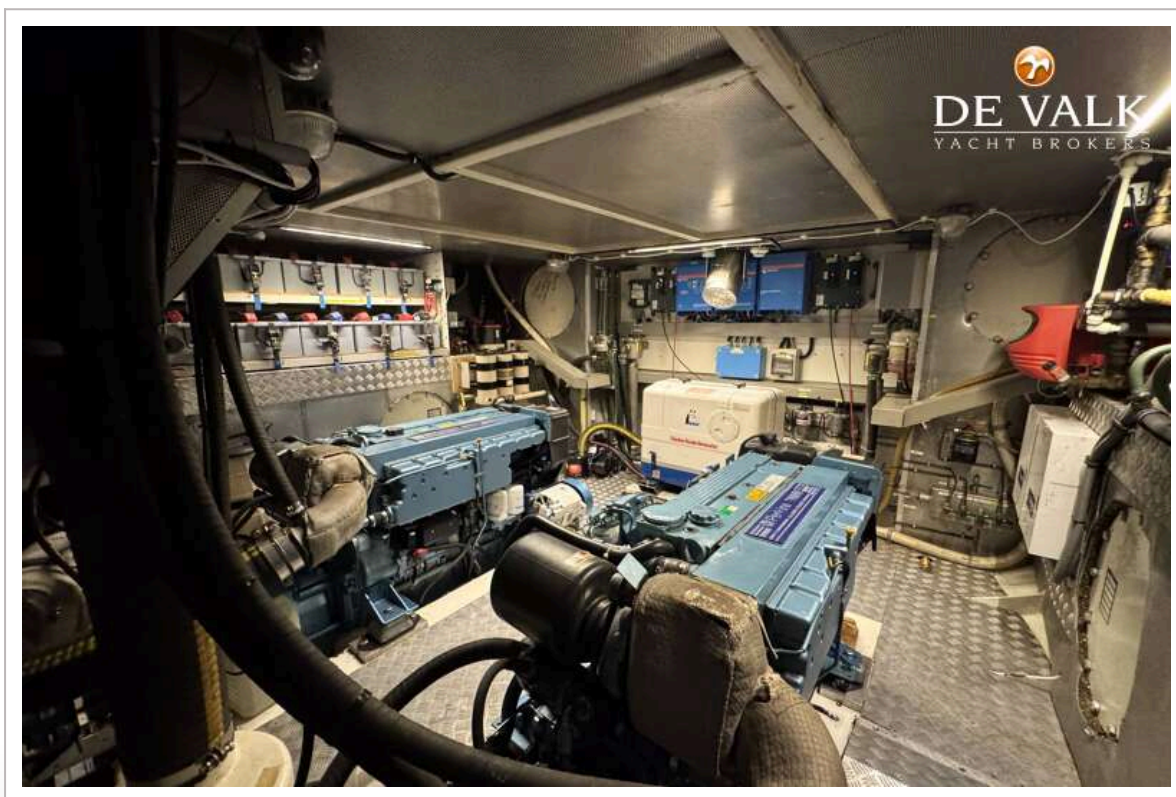


BOARNCRUISER 60 RETRO LINE

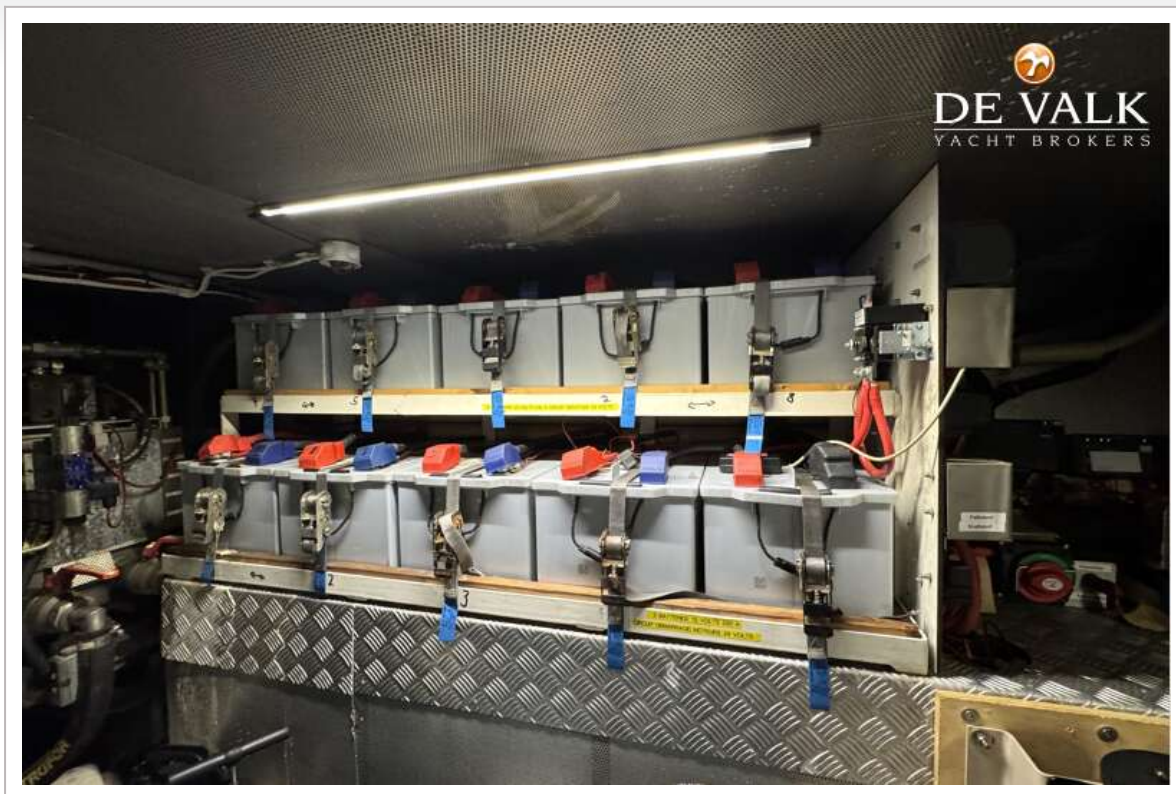




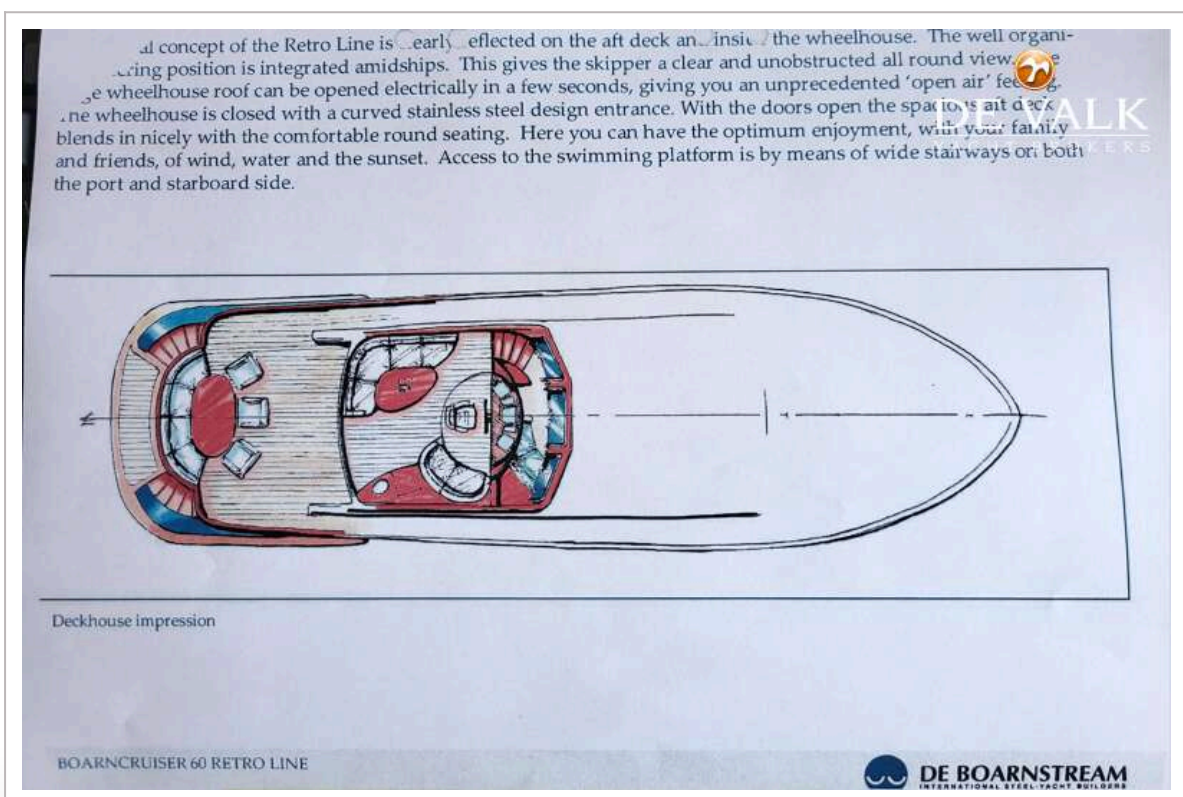
BOARNCRUISER 60 RETRO LINE



BOARNCRUISER 60 RETRO LINE



BOARNCRUISER 60 RETRO LINE

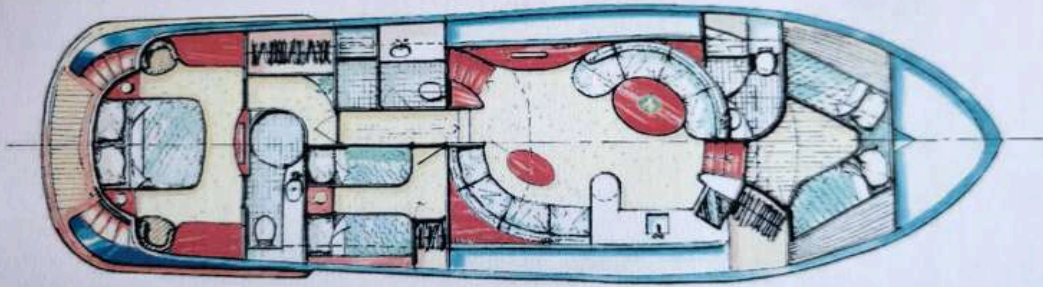


BOARNCRUISER 60 RETRO LINE

...ation the wheelhouse becomes part of the saloon. This gives much daylight and a feeling of space. Key to the interior design is style and luxury. In the large living room comfortable sofas and a spacious dining area have been positioned in combination with a fine open kitchen fitted with all possible conveniences.

The owner's cabin abaft is as you would wish: spacious bathroom, air conditioned, audio and video equipment and a large French bed.

The third bedroom is situated amidships. This is fitted with two single berths, which may also be combined to form a double bed. Even this cabin is fitted with its own bathroom. Access to the engine room is in this cabin.



Interior impression

BOARNCRUISER 60 RETRO LINE

 **DE BOARNSTREAM**
INTERNATIONAL STEEL YACHT BUILDERS

