



DE VALK  
YACHT BROKERS



VAN WIJK 1030



DE VALK  
YACHT BROKERS

## BROKER'S COMMENTS

A timeless modern classic. This Van Wijk 1030 offers the perfect combination between style, comfort and performance thanks to the powerful 315hp Yanmar diesel engine. Equipped with 1 cabin and 2 berths, an electric stove and refrigerator. This makes it the ultimate yacht for a weekend away with family or friends. This Van Wijk has always been moored in a covered marina. If you would like to experience the Van Wijk in real life, please feel free to visit us at the office in Loosdrecht.

*Mark Hesselmans*

## SPECIFICATIONS

<b>Dimensions</b>	10.30 x 3.60 x 0.95 (m)	<b>Builder</b>	Van Wijk
<b>Built</b>	2003	<b>Cabins</b>	
<b>Material</b>	GRP	<b>Berths</b>	
<b>Engine(s)</b>	1 x Yanmar diesel	<b>Hp/Kw</b>	315.00 (hp), 231.84 (kw)
<b>Asking price</b>	sold (VAT )	<b>Lying</b>	at sales office

## CONTACT

<b>Sales office</b>	De Valk Loosdrecht	<b>Telephone</b>	+31 35 582 90 30
<b>Address</b>	't Breukeleveense Meentje 6 1231 LM Loosdrecht / Wijdmeren The Netherlands	<b>E-mail</b>	loosdrecht@devalk.nl

## DISCLAIMER

These particulars are given in good faith as supplied but cannot be guaranteed.



## GENERAL

<b>Model</b>	VAN WIJK 1030
<b>Type</b>	motor yacht
<b>LOA (m)</b>	10,30
<b>Beam (m)</b>	3,60
<b>Draft (m)</b>	0,95
<b>Air draft (m)</b>	1,90
<b>Year built</b>	2003
<b>Builder</b>	Van Wijk
<b>Country</b>	The Netherlands
<b>Designer</b>	Pieter Beeldsnijder
<b>Displacement (t)</b>	4,5
<b>CE norm</b>	C
<b>Hull material</b>	GRP
<b>Hull colour</b>	blue
<b>Hull shape</b>	round-bilged
<b>Superstructure material</b>	GRP
<b>Rubbing strake</b>	fender rope
<b>Deck material</b>	GRP
<b>Deck finish</b>	teak
<b>Cockpit deck finish</b>	teak
<b>Window frame</b>	aluminium
<b>Window material</b>	glass
<b>Deckhatch</b>	yes
<b>Portholes</b>	Yes
<b>Fuel tank (litre)</b>	stainless steel 2x 520 L
<b>Level indicator (fuel tank)</b>	yes
<b>Fuel daytank (litre)</b>	stainless steel 7 L
<b>Freshwater tank (litre)</b>	yes
<b>Wheel steering</b>	hydraulic
<b>Outside helm position</b>	hydraulic



Emergency tiller yes

## ACCOMMODATION

Interior mahogany  
Layout yes  
Floor carpet  
Open cockpit yes  
Countertop corian  
Sink stainless steel  
Cooker electric  
Fridge Frigomatic  
Hot water system 220V + engine  
Water pressure system electrical  
Owners cabin v-bed  
Bathroom separate  
Toilet separate  
Toilet system manual  
Wash basin at the toilet

## MACHINERY

No of engines 1  
Make Yanmar  
HP 315  
kW 231.84  
Fuel diesel  
Engine hours 422  
Engine cooling system freshwater heat exchanger  
Drive shaft  
Engine controls bowden cable  
Gearbox hydraulic  
Bowthruster electric



<b>Exhaust</b>	watercooled
<b>Propeller type</b>	fixed
<b>Propeller blades</b>	yes
<b>Propeller shaft material</b>	stainless steel
<b>Shaft lubrication</b>	water
<b>Start battery</b>	1x
<b>Service battery</b>	2x
<b>Bowthruster battery</b>	yes
<b>Battery charger/inverter</b>	Mastervolt Combi 12/1500-65
<b>Shorepower</b>	with cable

## NAVIGATION

<b>Compass</b>	yes
<b>Multi control display</b>	Raymarine
<b>Depth sounder/log</b>	Raymarine
<b>Navigation lights</b>	yes

## EQUIPMENT

<b>Cockpit cover</b>	New april 2024
<b>Bimini</b>	New april 2024
<b>Cockpit cushions</b>	yes
<b>Cockpit table</b>	yes
<b>Bathing platform</b>	yes
<b>Boarding ladder</b>	yes
<b>Anchor</b>	yes
<b>Anchor chain</b>	yes
<b>Windlass</b>	electrical
<b>Grab rail (superstructure)</b>	wood
<b>Horn</b>	yes
<b>Fenders</b>	yes
<b>Mooring lines</b>	yes



TV	Philips
Surround Sound System	JVC
Cockpit speakers	yes
Speakers in cabin	yes



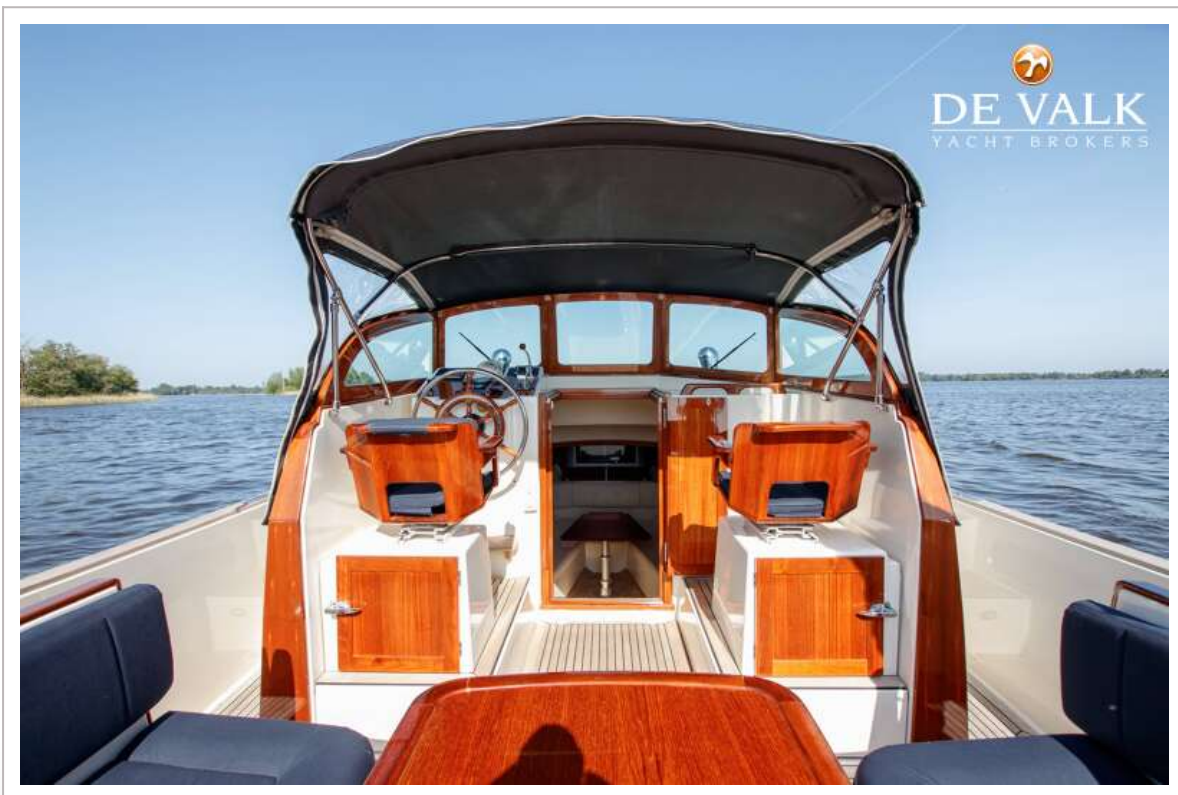
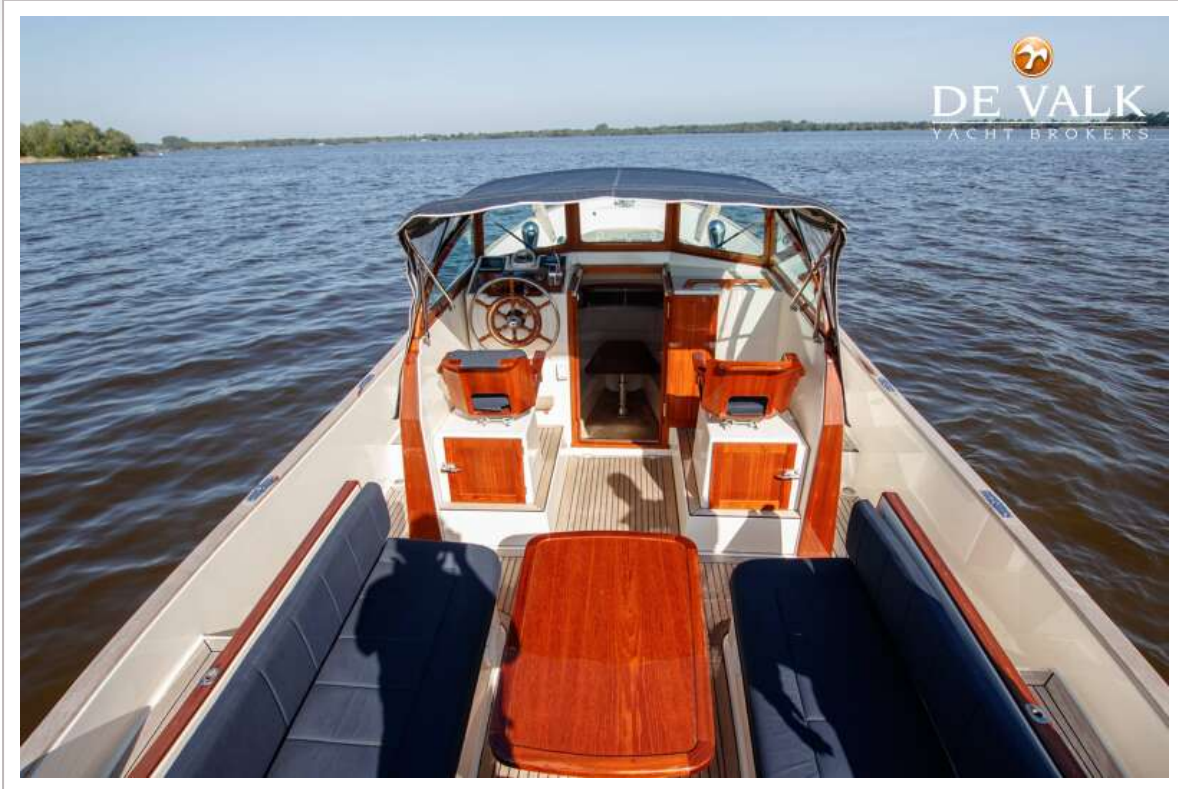






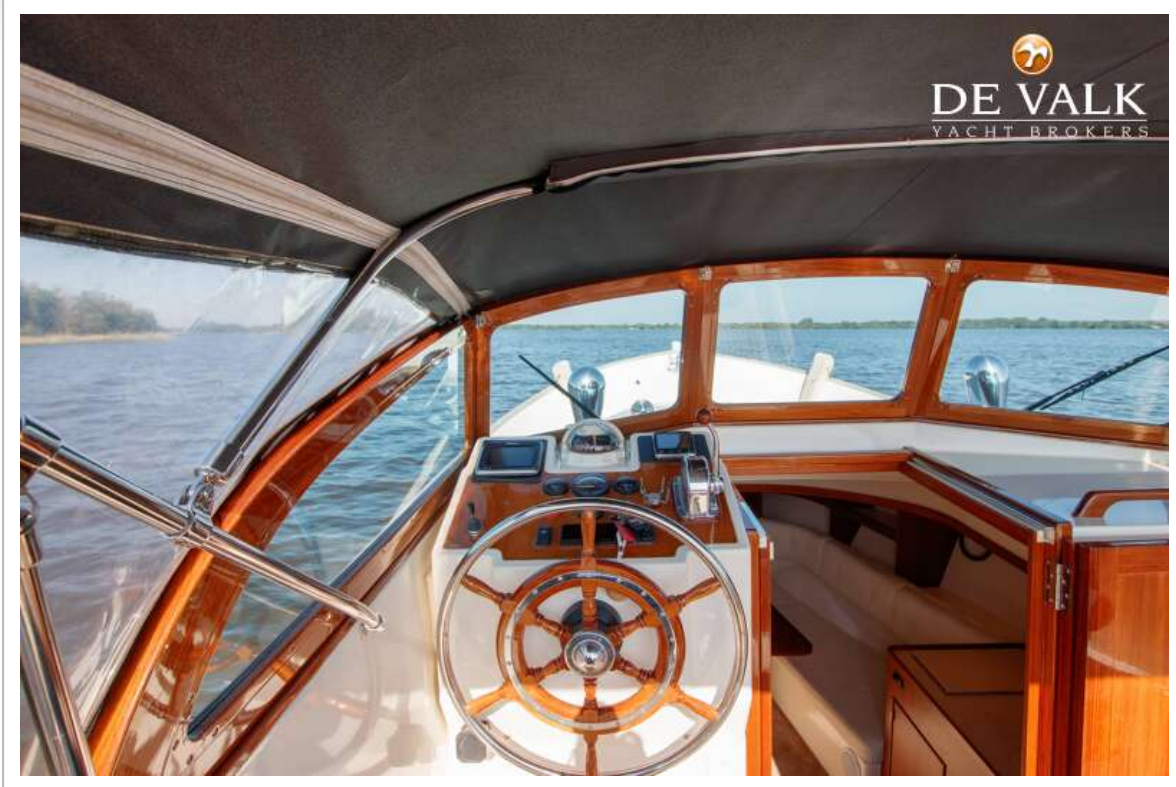


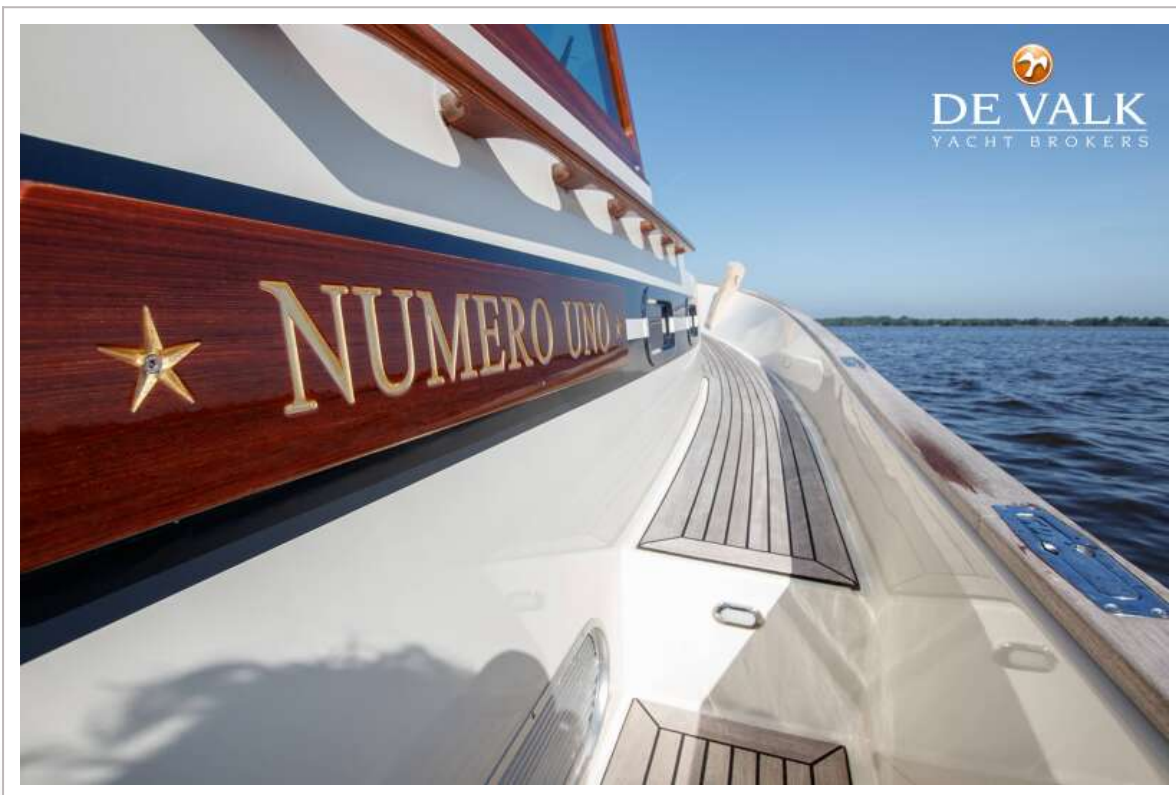
# VAN WIJK 1030



# VAN WIJK 1030

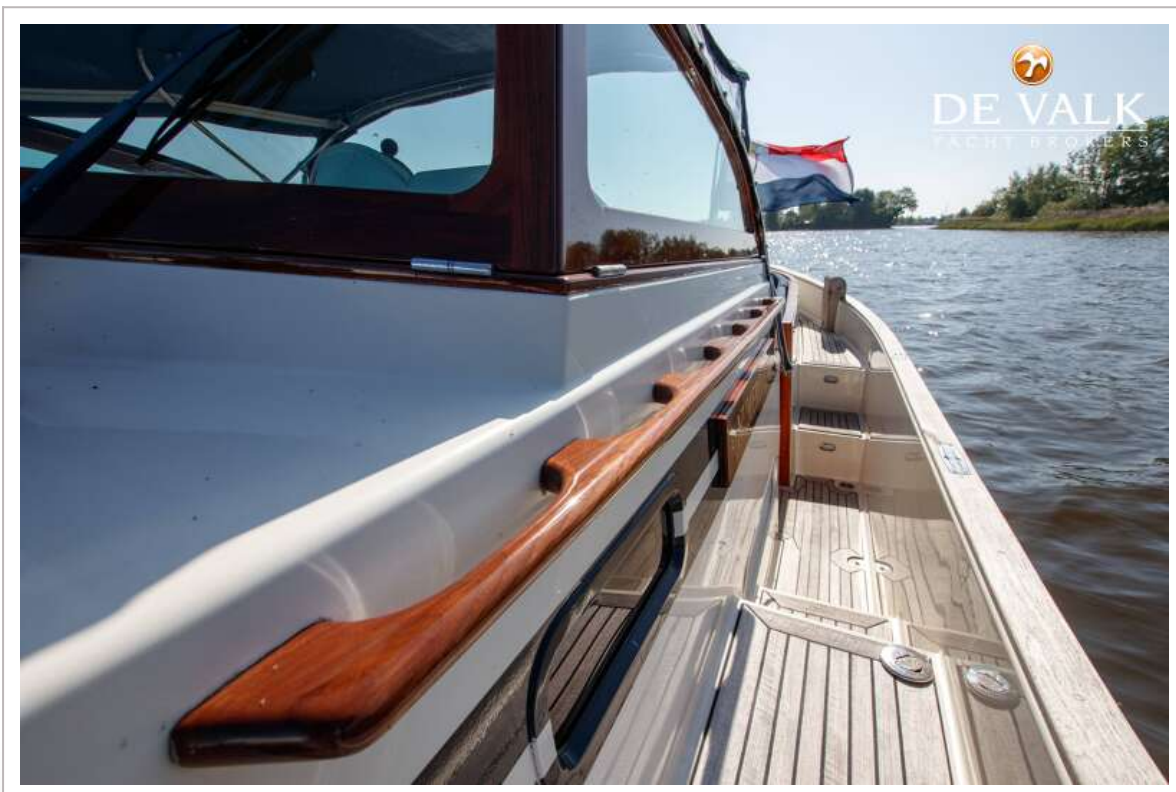




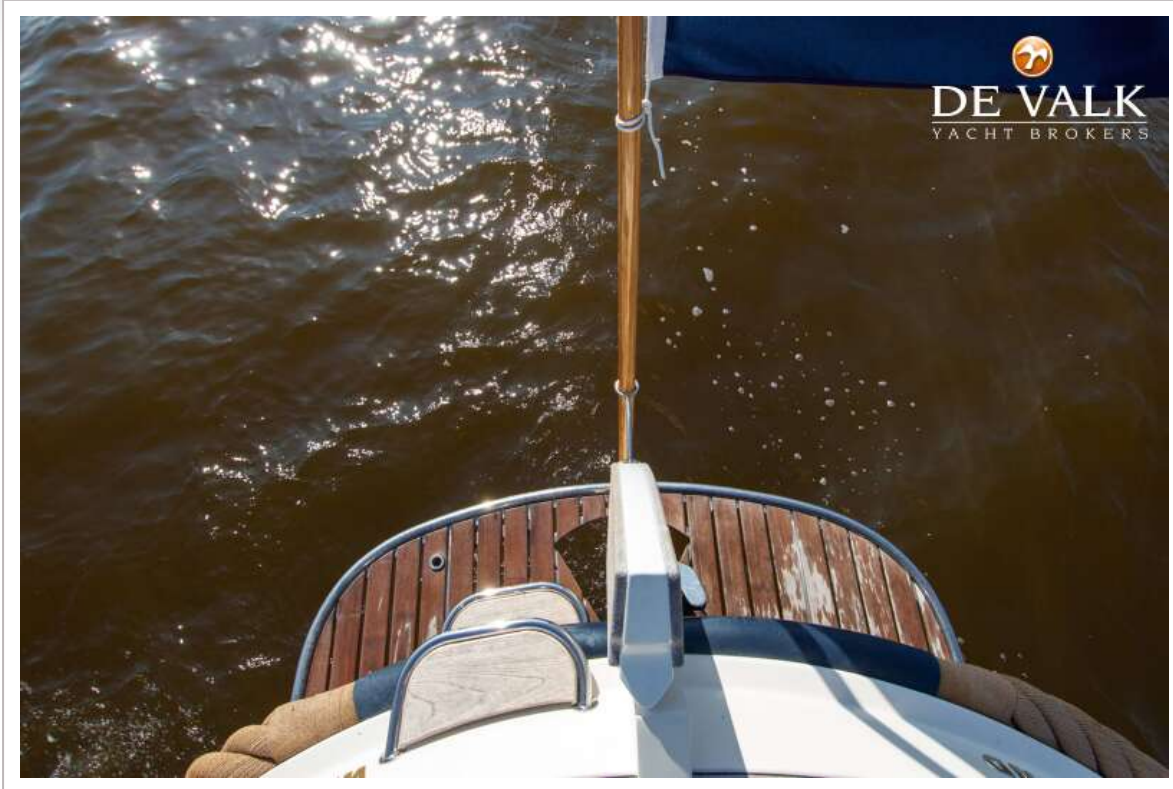


# VAN WIJK 1030



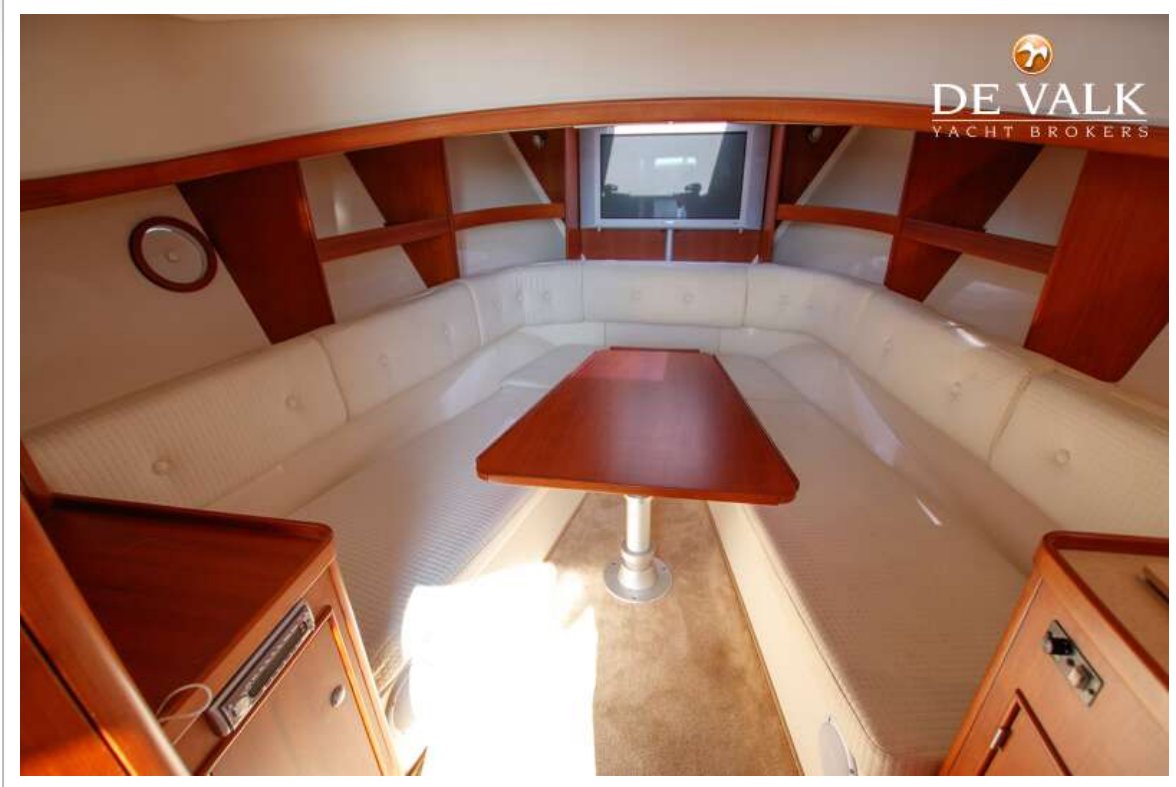


# VAN WIJK 1030

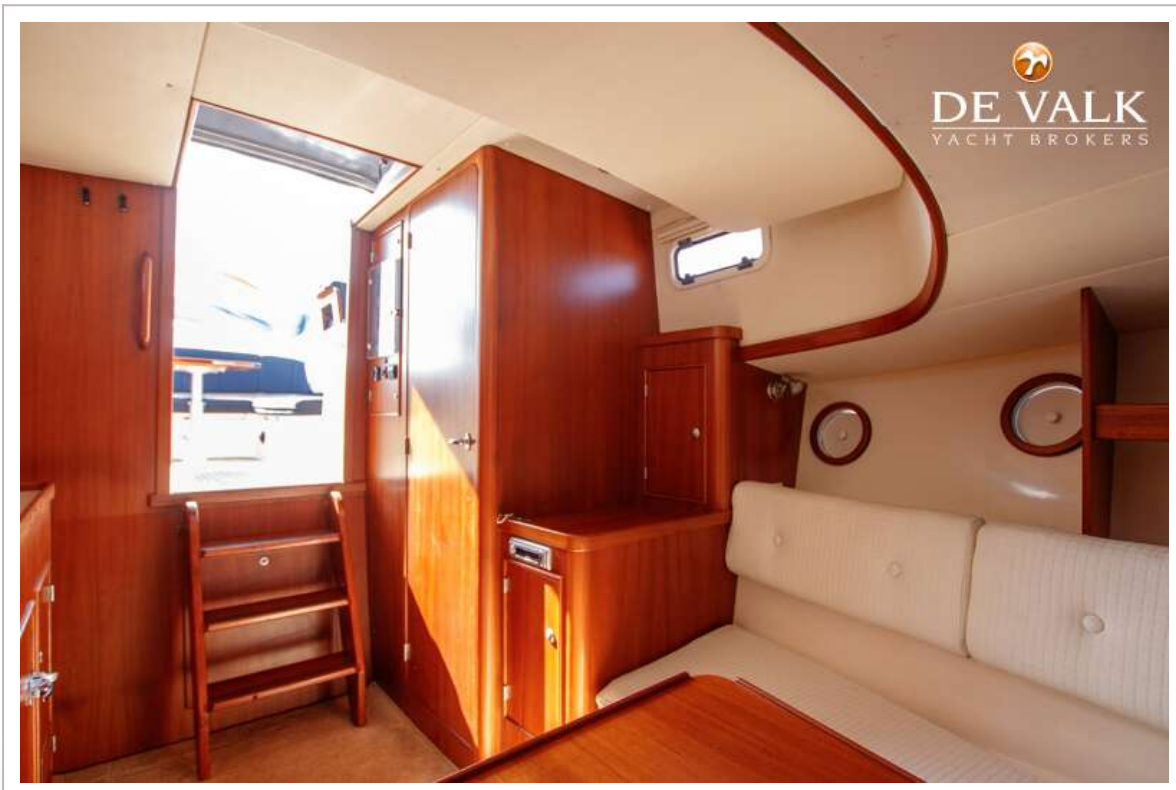


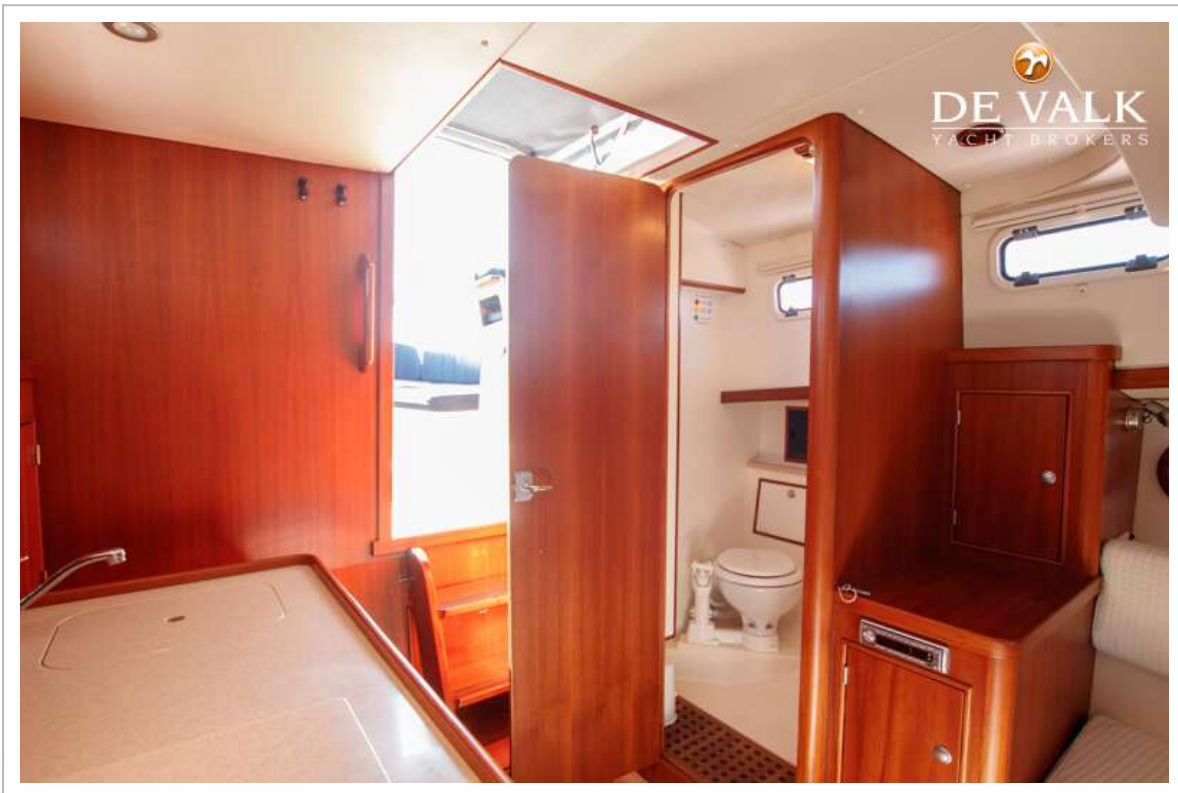


# VAN WIJK 1030



# VAN WIJK 1030





# VAN WIJK 1030

