



DE VALK
YACHT BROKERS



RELIN 47 SLX



DE VALK
YACHT BROKERS

RELINE 47 SLX

BROKER'S COMMENTS

This Reline 47 slx has a beautiful line and offers everything you are looking for in a yacht of this size. Many extras provide comfort and luxury. The current owners have not spared anything, both technically and optically, the ship is in perfect order, this is reflected in everything: a super quiet power generator, Kabola central heating with hot water, satellite TV, heated steering station, Siemens cooking equipment, beautifully maintenance-free flexiteak deck, underwater floodlights, bow and stern thruster. The ship has a pleasant light saloon. In winter, the ship is in winter storage

Jeanne Stukstette

SPECIFICATIONS

Dimensions	14.35 x 4.10 x 1.20 (m)	Builder	Reline Yachting BV Steenwijk Holland
Built	2005	Cabins	2
Material	Steel	Berths	6
Engine(s)	1 x Vetus Deutz DTA 64 diesel	Hp/Kw	192.00 (hp), 141.31 (kw)
Asking price	sold (VAT)	Lying	at sales office

CONTACT

Sales office	De Valk Limburg	Telephone	+31 630372559
Address	Schippersveld 3 6019 DE Wessem NL	E-mail	limburg@devalk.nl

DISCLAIMER

These particulars are given in good faith as supplied but cannot be guaranteed.



GENERAL

Model	RELINE 47 SLX
Type	motor yacht
LOA (m)	14,35
Beam (m)	4,10
Draft (m)	1,20
Headroom (m)	2,00
Year built	2005
Builder	Reline Yachting BV Steenwijk Holland
Country	The Netherlands
Net tonnage	20
CE norm	B
Hull material	steel
Hull colour	white
Hull thickness (mm)	5
Hull shape	hard chine
Superstructure material	steel
Deck material	steel
Deck finish	synthetic teak 2016 Flexi teak
Antifouling (year)	2021
Window frame	aluminium
Deckhatch	2
Portholes	aluminium 14
Insulation	glasswool
Radar arch	collapsible RVS
Mast can be lowered	hydraulic
Fuel tank (litre)	stainless steel 1000 li
Level indicator (fuel tank)	yes
Freshwater tank (litre)	stainless steel 1000 li
Blackwater tank (litre)	stainless steel 100 li
Wheel steering	hydraulic



Extra info	Tinted hard glass glazing, some windows are double glazed
Extra info	All windows have sun blinds, insect screens and rain protection
Extra info	In 2016 the yacht was repainted above the fender (2-component system) and got a very high-quality Flexi teak deck.

ACCOMMODATION

Cabins	2
Berths	6
Interior	teak
Floor	teak and holly
Aft deck	Stainless steel sink with tap at steering position Fridge next to steering position: Dometic fridge with freezer compartment (new in 2021) Map storage compartment and floor cupboard/shoe cupboard
Saloon	The hood and cushions are completely new in 2021
Headroom saloon (m)	2,00 m
Heating	central hot water Kabola
Dinette to convert into berth	yes
Sink	stainless steel
Cooker	ceramic Siemens
Oven	Siemens
Extractor	Bosch
Fridge	2x Dometic 1100 li (2021)
Freezer	yes
Hot water system	220V + engine Kabola 80li
Water pressure system	electrical
Owners cabin	double bed
Bed length (m)	2,20 m
Wardrobe	drawers and shelves
Toilet	en suite
Toilet system	electric Tecma
Wash basin	at the toilet



RELINE 47 SLX

Shower	en suite
Extra info	bed base (opens with extra reinforced gas pressure spring) Phillips satellite TV
Guest cabin 1	single bed (1,00m breed)
Bed length (m)	2,00m
Wardrobe	drawers and shelves
Toilet	en suite
Toilet system	electric Tecma
Wash basin	at the toilet
Shower	en suite
Guest cabin 2	double bed
Washing machine/dryer combi	yes
Extra info	Extra storage space in the kitchen. Dining table forms a luxurious double bed
Extra info	Interior lighting fully LED (new in 2021)

MACHINERY

No of engines	1
Make	Vetus Deutz
Type	DTA 64
HP	192
kW	141.31
Fuel	diesel
Year installed	2005
Maximum speed (kn)	8,5
Cruising speed (kn)	7,5
Engine hours	1366
Engine cooling system	freshwater heat exchanger
Drive	shaft
Shaft seal	yes
Engine controls	bowden cable
Bowthruster	electric Cupa 9ps



Sternthruster	electric Cupa 9ps
Exhaust	watercooled RVS
Propeller blades	4 vleugel schroef +reserve
Shaft lubrication	grease
Electric bilge pump	yes
Generator	wet exhaust Mastervolt whisper 6 kW Ultra (1 x 85 A 12 V en 1 x 55 A 24 V)
Batteries	7x220Ah Victron AGM 1x90 Ah Victron AGM (2018)
Bowthruster battery	yes
Sternthruster battery	yes
Battery charger/inverter	2 x Combi Victron energy Multi Plus 120 A met omvormer 2000 Watt
Shorepower	with cable Batterijmonitor: 2 x Victron (volledig nieuw in 1018)
Extra info	2 x ventilation rooms in the engine room
Extra info	4 x underwater floodlights (new in 2017) on aft deck/bathing platform

NAVIGATION

Compass	yes
Depth sounder	VDO
Log	VDO
VHF	yes
Rudder angle indicator	VDO
GPS	yes
Plotter	actuele navigatie-CF-kaart (West-Europa) Raymarine C90W
AIS receiver	yes
AIS transponder	yes
Radio receiver	yes
Navigation lights	yes
Searchlight	2018

EQUIPMENT



RELINE 47 SLX

Fixed windscreen	yes
Cockpit cover	yes
Sun awning	yes
Cockpit cushions	yes
Cockpit table	yes
Bathing platform	yes
Boarding ladder	stainless steel 4 steps
Bow ladder	yes
Deck shower	yes
Anchor	Bruce RVS
Anchor chain	yes
Anchor 2	Bruce RVS reserve
Windlass	electrical Venus
Deck wash	yes
Davits	stainless steel 130 kg/stuk
Davits controls	manual
Sea railing	stainless steel
Wiper	3xrvs ruitenwissers + 1reserve ruitenwisser
Horn	Scheepshoorn 12 V
Fenders	yes
Mooring lines	yes
TV	40 inch Grundig satellite TV (new in 2019)
TV receiver	yes
TracVision ball	Antenne TracVision
Radio-cd player	Pioneer DAB Plus Radio/CD (2020) 4 speakers
Speakers in salon	4x
Fire extinguisher	2x
Auto extinguisher system	Engine room
Extra info	yes



RELIN 47 SLX



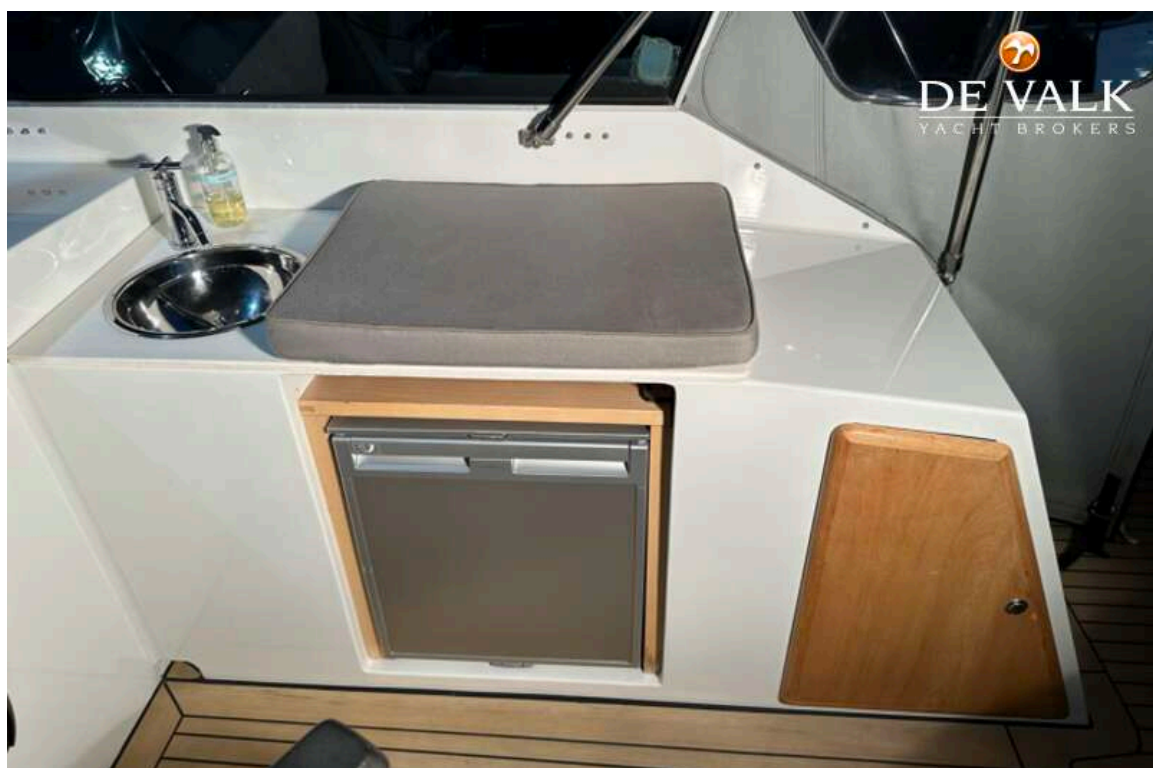
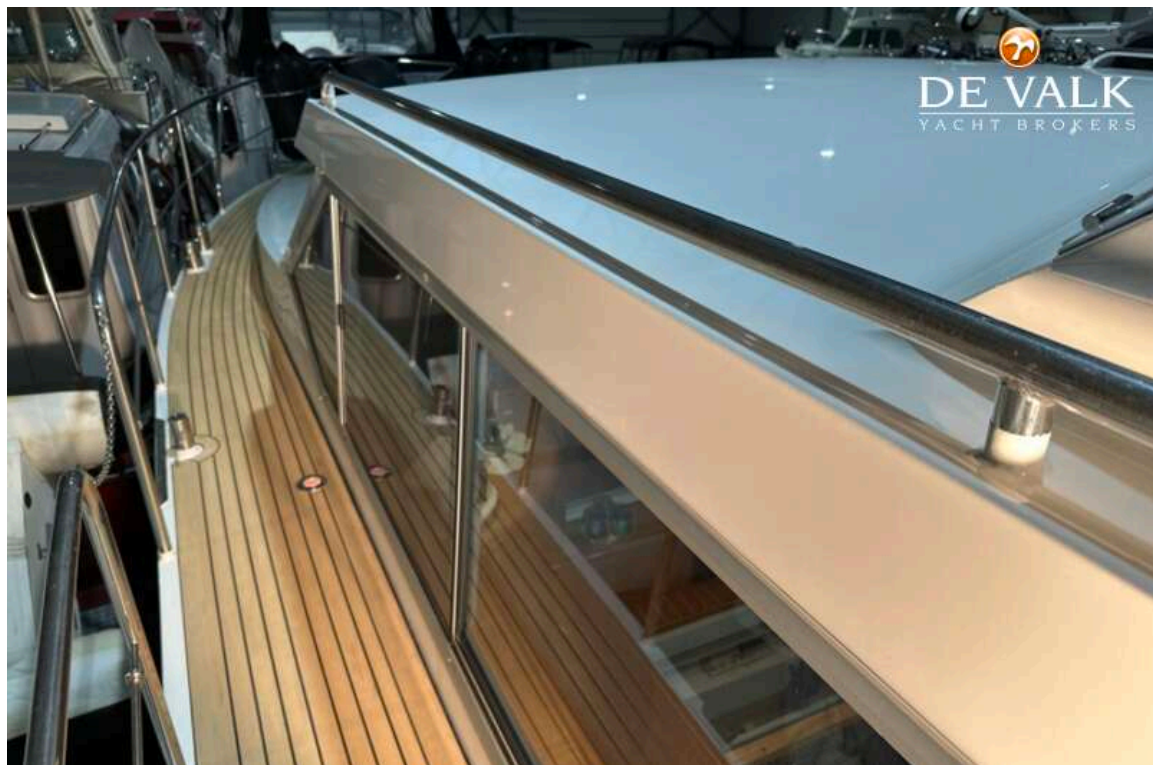
RELINE 47 SLX



RELINE 47 SLX



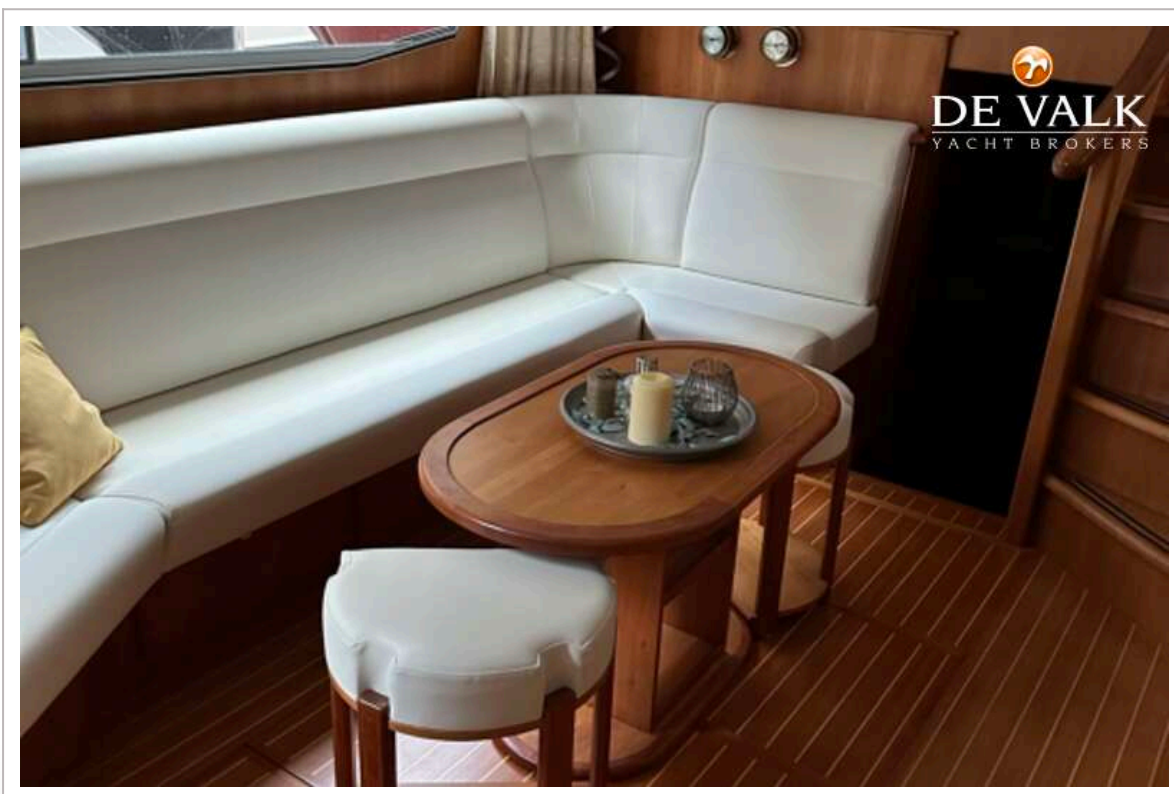
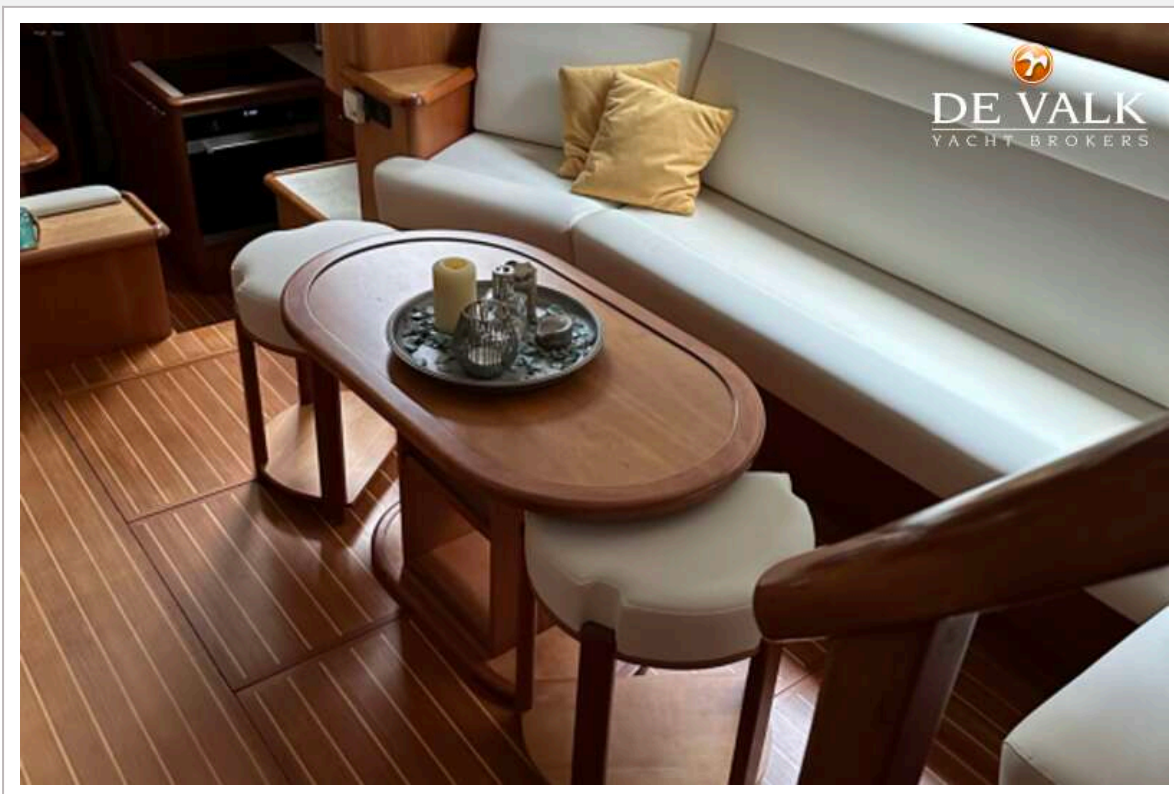
RELINE 47 SLX



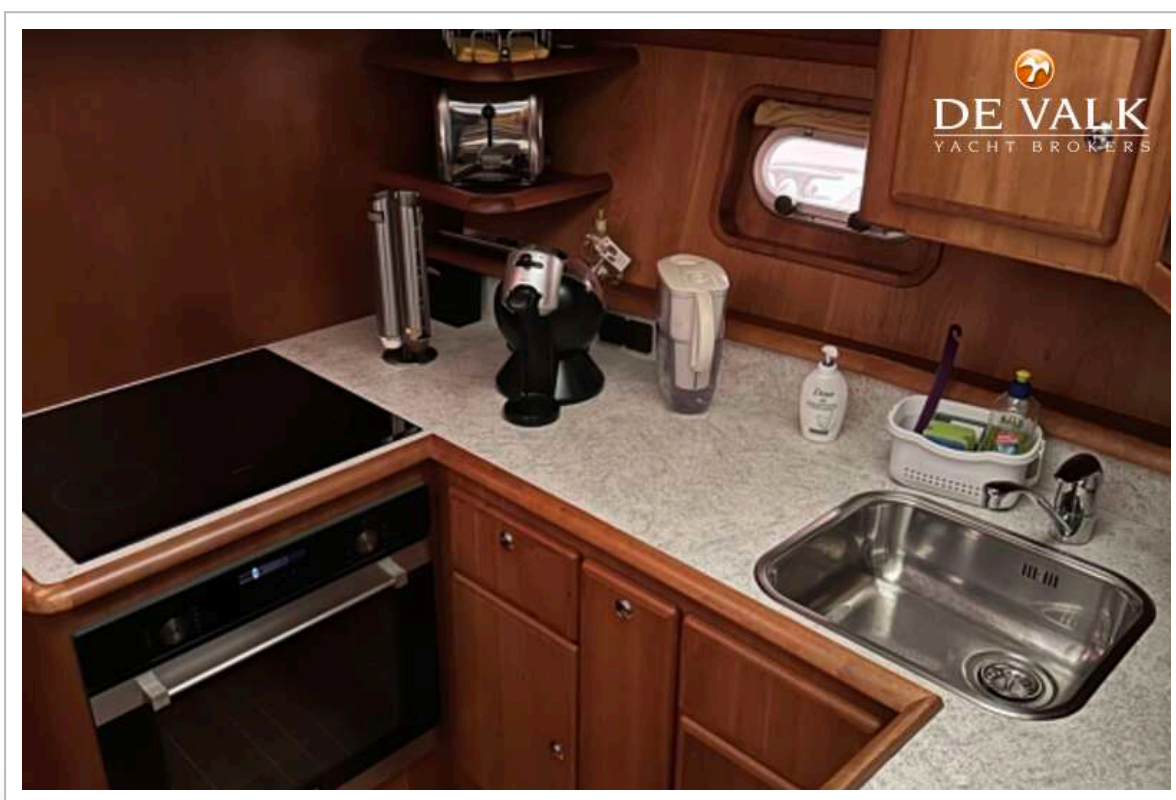
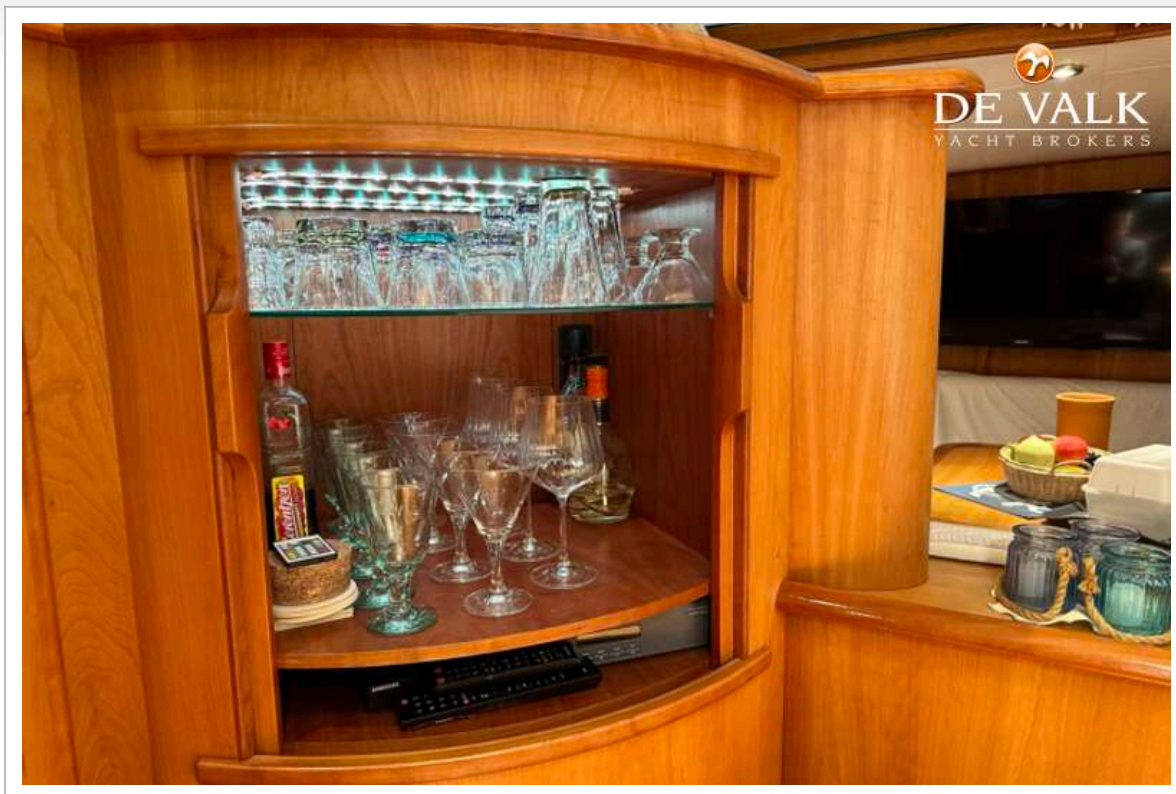
RELINE 47 SLX



RELINE 47 SLX

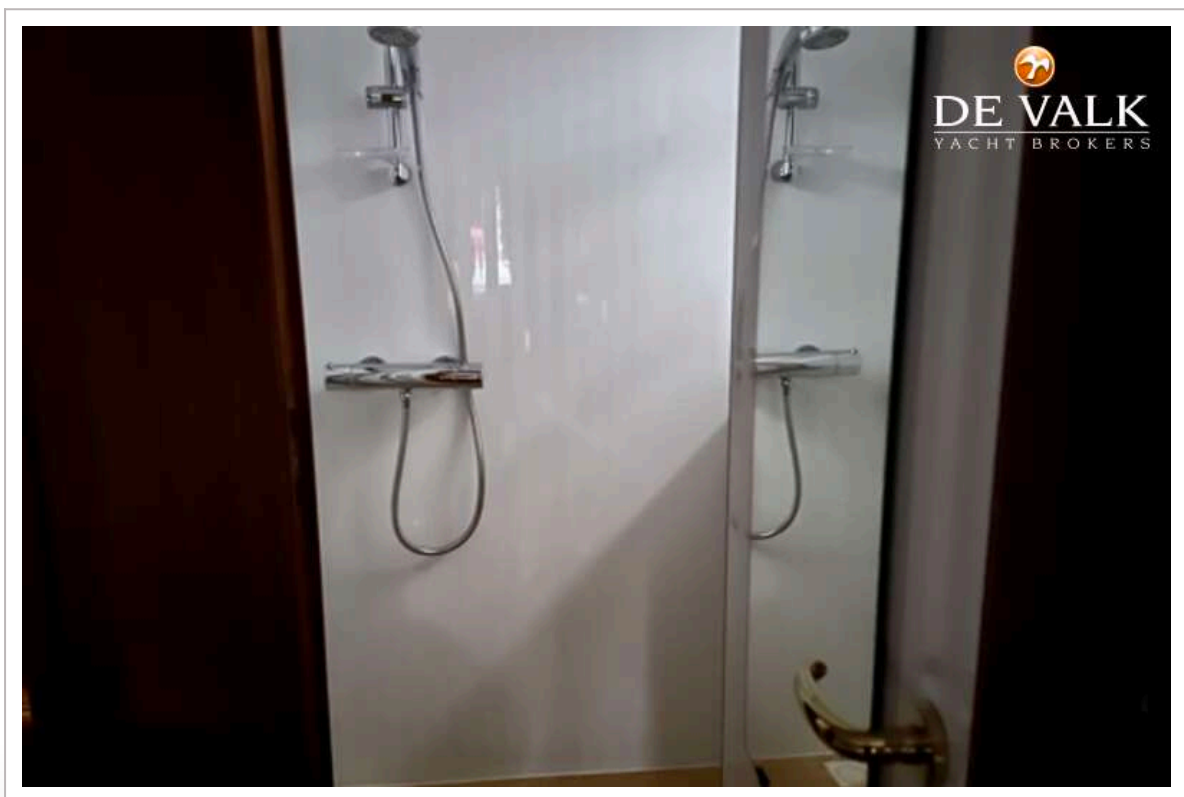
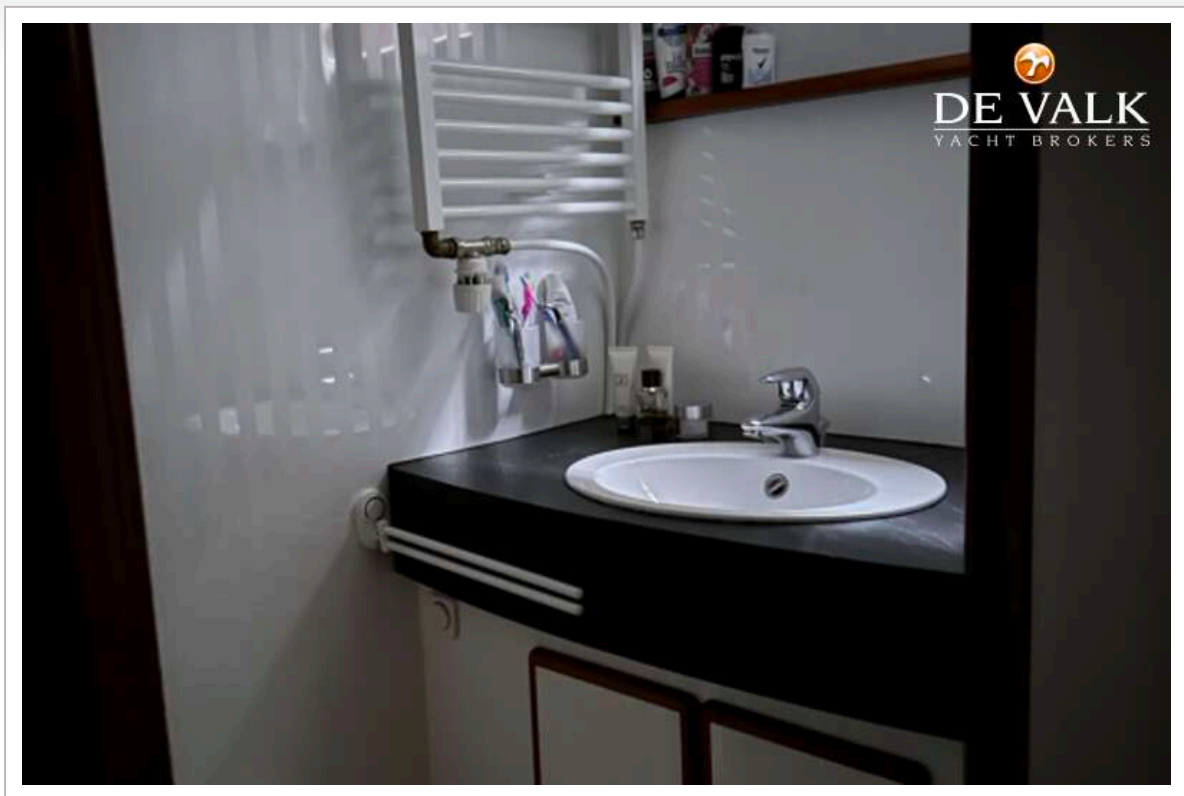


RELINE 47 SLX

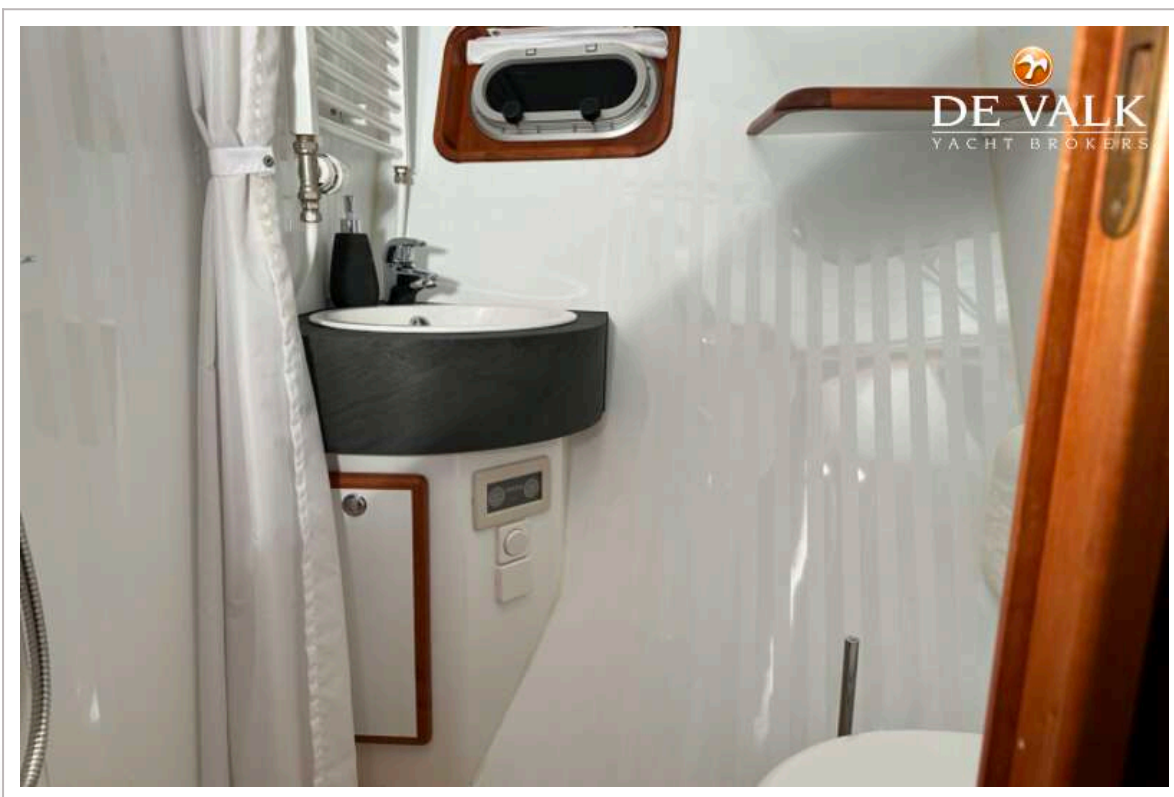
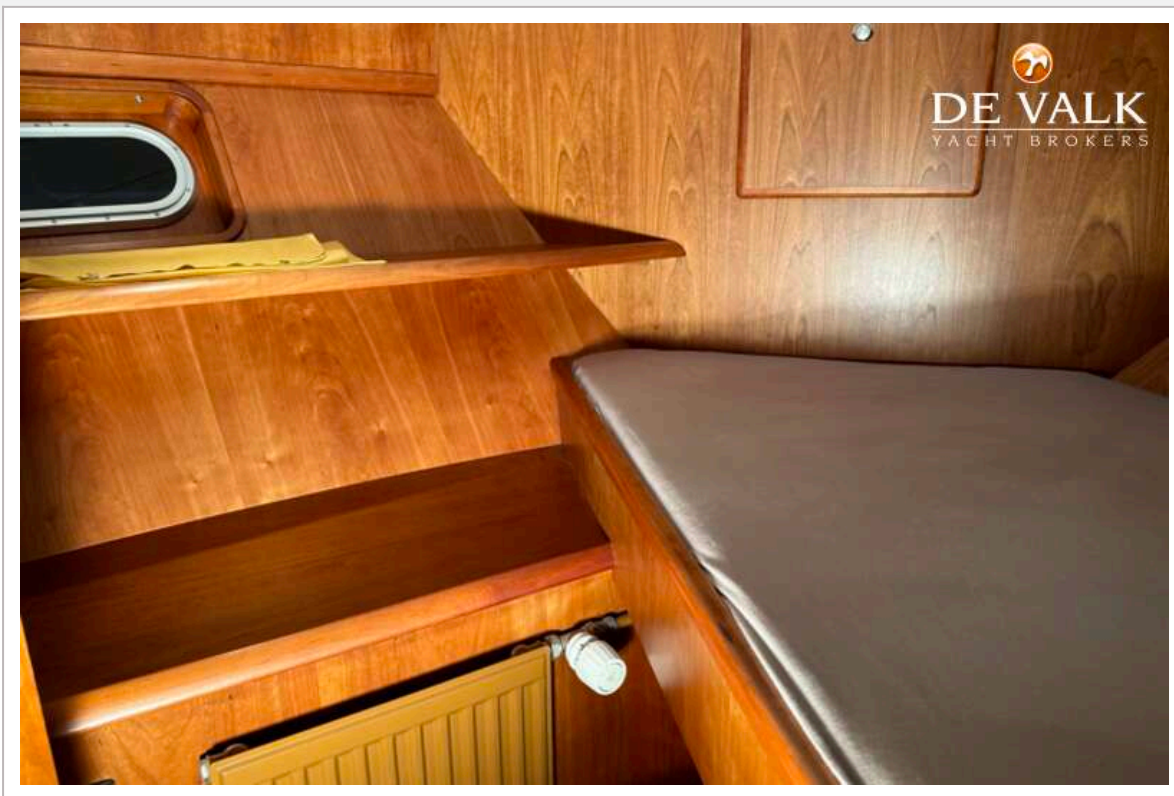


RELINE 47 SLX

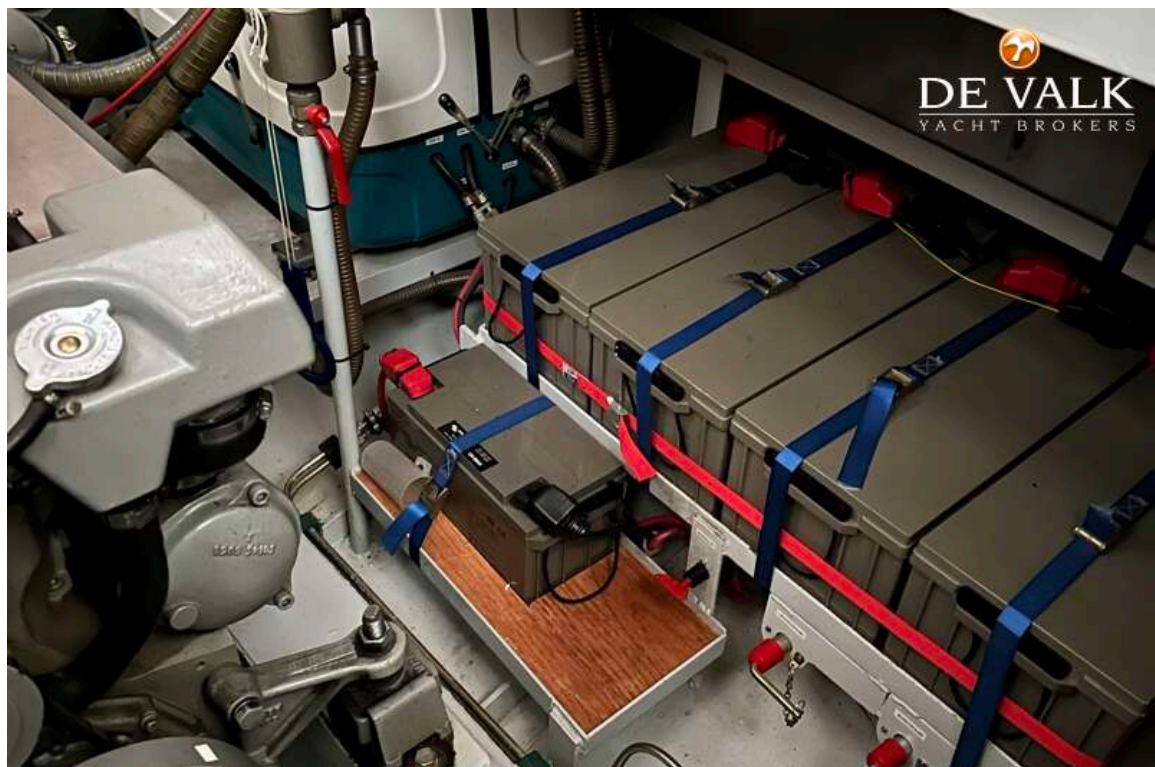
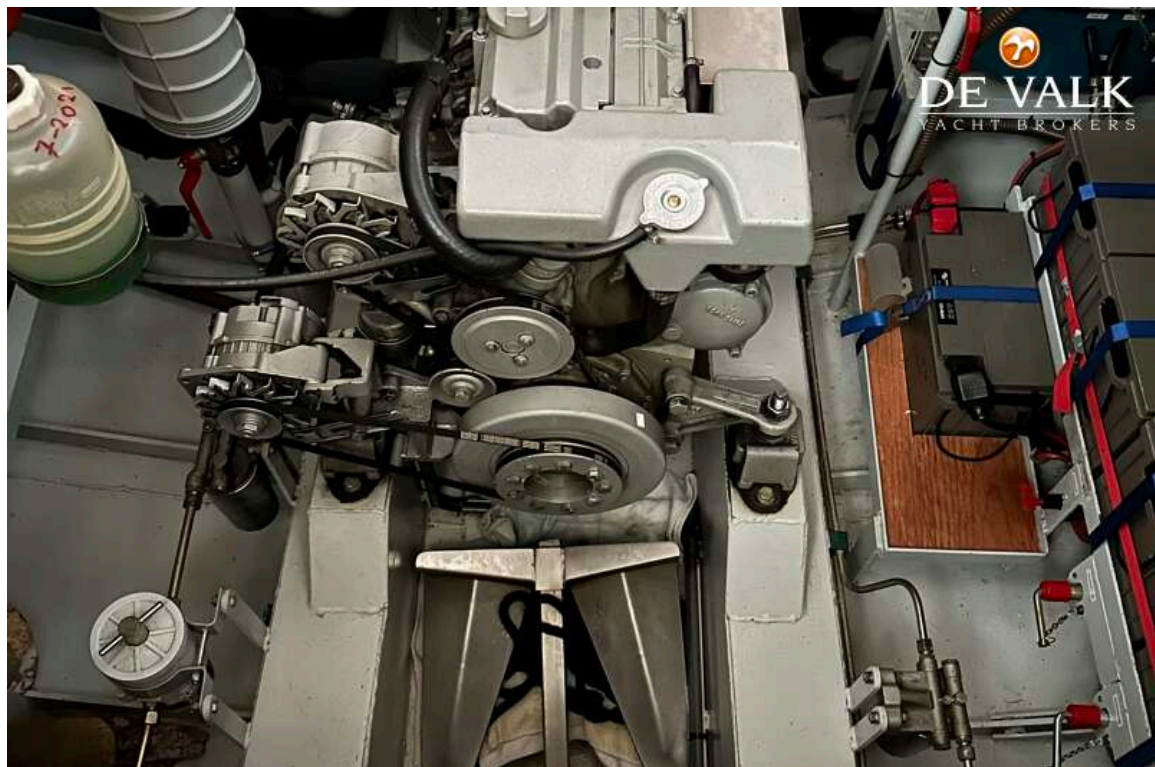




RELINE 47 SLX



RELINE 47 SLX



RELINE 47 SLX

