



DE VALK
YACHT BROKERS



NAJAD 405



DE VALK
YACHT BROKERS

BROKER'S COMMENTS

The Najad 405 is the swiftest Najad ever designed by Judel & Vrolijk! The Najad 405 combines first class sailing performance with genuine comfort and generous accomodation. The interior design offers a calm and harmonious environment from the spacious and light saloon and galley, to the luxurious aft cabin. This is a unique opportunity to own a rare Najad 405 that is in excellent condition.

Reinoud Bicker Caarten

SPECIFICATIONS

Dimensions	12.20 x 3.85 x 2.10 (m)	Builder	Najad Varvet AB
Built	2008	Cabins	2
Material	GRP	Berths	5
Engine(s)	1 x Volvo Penta D2 diesel	Hp/Kw	55.00 (hp), 40.48 (kw)
Asking price	sold (VAT)	Lying	contact sales office

CONTACT

Sales office	De Valk Portugal	Telephone	+351 308 812321
Address	Edifício Administrativo - Ponta da Areia 8500 - 345 Portimão PT	E-mail	portugal@devalk.nl

DISCLAIMER

These particulars are given in good faith as supplied but cannot be guaranteed.



GENERAL

Model	NAJAD 405
Type	sailing yacht
LOA (m)	12,20
LWL (m)	10,44
Beam (m)	3,85
Draft (m)	2,10
Air draft (m)	18,50
Headroom (m)	1,95
Year built	2008
Builder	Najad Varvet AB
Country	Sweden
Designer	Judel & Vrolijk
Displacement (t)	12,5
CE norm	A
Hull material	GRP
Hull colour	off-white
Keel type	fin keel with bulb
Superstructure material	GRP
Rubbing strake	wood
Deck material	GRP
Deck finish	teak
Superstructure deck finish	teak
Cockpit deck finish	teak
Antifouling (year)	Coppercoat 2022
Dorades	4
Window frame	aluminium
Window material	polycarbonate
Deckhatch	4
Insulation	foam
Fuel tank (litre)	230L



Level indicator (fuel tank)	yes
Freshwater tank (litre)	3 tanks total 550L
Blackwater tank (litre)	60L
Level indicator (blackwater)	yes
Blackwater tank extraction	deck extraction
Wheel steering	mechanical
Emergency tiller	yes

ACCOMMODATION

Cabins	2
Berths	5
Interior	oak
Layout	Aftcabin with double bed in centre, saloon with 1 sofa and galley portside and 2 seats, navigation centre and bathroom on starboard, cabin in bow with V bed.
Floor	teak and holly
Open cockpit	yes
Saloon	yes
Headroom saloon (m)	1,95m
Heating	diesel ducted hot air
Navigation center	in saloon on starboard
Chart table	yes
Dinette	with folding table
Galley	On portside passage to aft cabin
Countertop	corian
Sink	stainless steel
Cooker	calor gas Force10 2burners
Oven	+grill
Gas alarm	yes
Microwave	LG
Fridge	104L
Freezer	yes



Hot water system	220V + engine 40L Boiler
Water pressure system	yes
Crockery	yes
Owners cabin	French bed
Bed length (m)	2m x 1,5m
Wardrobe	hanging/drawers/shelves
Bathroom	shared
Toilet	shared
Toilet system	manual Fresh water flush
Wash basin	in the bathroom
Shower	shared
Guest cabin 1	v-bed
Bed length (m)	2,04m x 1,50m
Wardrobe	hanging and shelves
Bathroom	shared

MACHINERY

No of engines	1
Make	Volvo Penta
Type	D2
HP	55
kW	40.48
Fuel	diesel
Year installed	2008
Maximum speed (kn)	7
Cruising speed (kn)	6
Consumption (l/hr)	2,5
Range (nm)	600
Engine hours	1800
Engine cooling system	seawater
Drive	sail-drive



Saildrive seal	yes
Engine controls	bowden cable
Gearbox	mechanical
Engine controls	bowden cable
Bowthruster	electric
Exhaust	watercooled
Propeller type	folding Flexofold
Propeller blades	3 bronze
Propeller shaft material	stainless steel
Manual bilge pump	yes
Electric bilge pump	yes
Bilge alarm	yes
Electrical installation	12V / 230V
Start battery	72Ah
Service battery	2x 120Ah with room for 1 more New 2021
Battery monitor	yes
Battery charger	Mastervolt
Inverter	yes
Solar panel	yes
Shorepower	with cable

NAVIGATION

Compass	Silva
Multi control display	Raymarine ST70 at hatch
Depth sounder	Raymarine ST60+
Log	Raymarine ST60+
Windset	Raymarine ST60+
Repeater	at nav. table Multifunction ST 60
VHF	ICOM ic-m506
VHF handheld	Icom Cockpit commander
Autopilot	Autohelm smart pilot



Radar	Raymarine HD
GPS	Raymarine
Radar/GPS/plotter	Raymarine Axiom 12inch
Navtex	Furuno
Personal computer	Aquanav Pro digitalyacht
PC connection	NMEA 2000
Wifi antenna	yes
Electronis chart(s)	UK & Europe
AIS transponder	Comar CSB200 class B
EPIRB	yes
Navigation lights	LED

EQUIPMENT

Fixed windscreen	yes
Sprayhood with grab rail	yes
Cockpit cover	Tonneau cover
Cockpit cushions	yes
Cockpit table	yes
Bathing platform	yes
Boarding ladder	yes
Bow ladder	yes
Deck shower	freshwater hot/cold deckwash in anchor locker
Anchor	yes
Anchor chain	60m stainless steel
Anchor 2	CQR Plough
Anchor chain	30m line
Windlass	electrical Lofrans
Windlass aft	electrical
Deck wash	Fresh water in anchor locker
Dinghy	rigid inflatable Highfield 2,5
Outboard	Mercury 2,5HP



Outboard support	yes
Davits	stainless steel Simpson
Davits controls	electrical With remote
Sea railing	wire Stainless steel
Grab rail (superstructure)	teak
Railing side opening gates	yes
Pushpit	yes
Pulpit	yes
Life raft	container
Life raft (pers)	4
Last life raft survey	Due
Safety lines on deck	yes
Fenders	8 straight plus 2 ball
Mooring lines	6x
Tools	yes
TV	LG with chromecast
Radio-cd player	Pioneer
iPod connection	yes
Speakers in cabin	yes
Clock - barometer	yes
Fire extinguisher	3x

RIGGING

Rigging	sloop
Standing rigging	wire Stainless steel
Brand mast	Seldén
Material mast	aluminium
Spreaders	3x2
Keel stepped mast	yes
Mainsail	40m2 UK sails X-drive carbon from 2016
Stoway mast	furling in mast



Jib I	furling 35m2 UK sails from 2016
Genoa	50m2 UK sails from 2015
Genoa furler	yes
Genoa cover	yes
Gennaker	107m2 little used
Spinnaker	120m2 hardly used
Stormjib	17m2
Reefing System	main in-mast furling
Backstay adjuster	mechanical
Boomvang	mechanical and tackle Selden rodkicker
Primary sheet winch	Anderson 52 ST electric
Secondary sheet winch	Anderson 40 ST manual
Halyard winches	2x Anderson 28ST



NAJAD 405





NAJAD 405



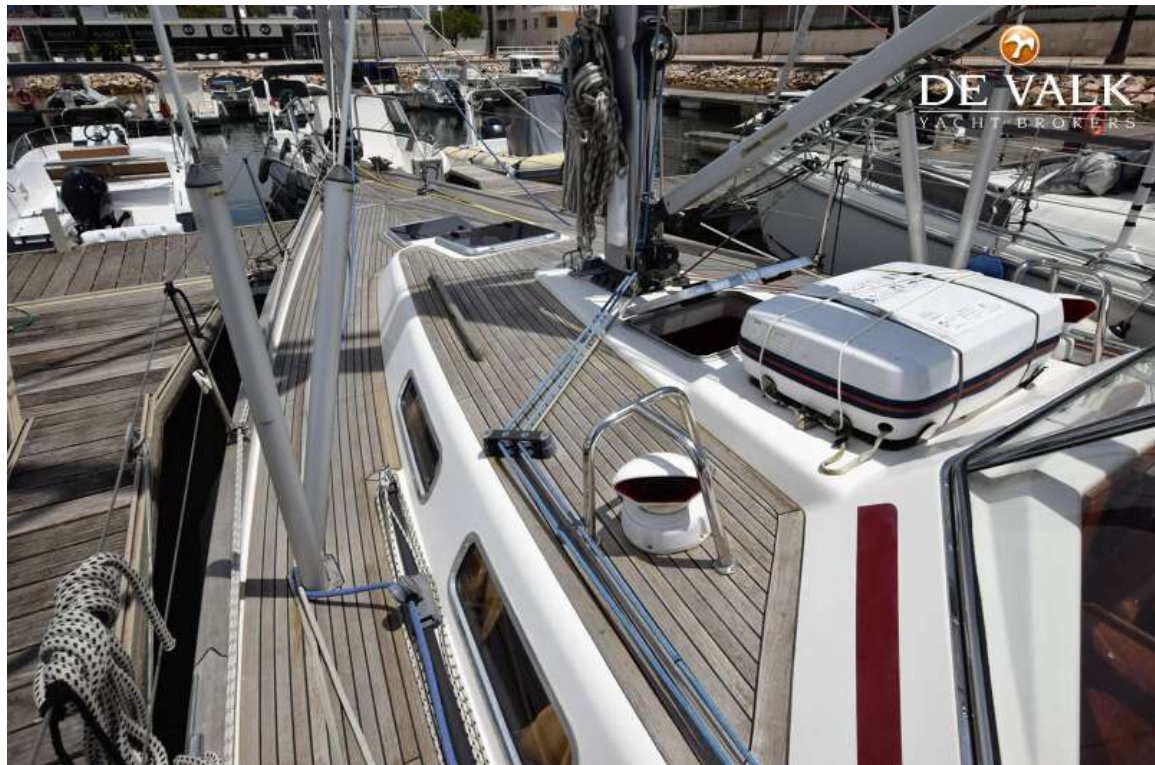
NAJAD 405



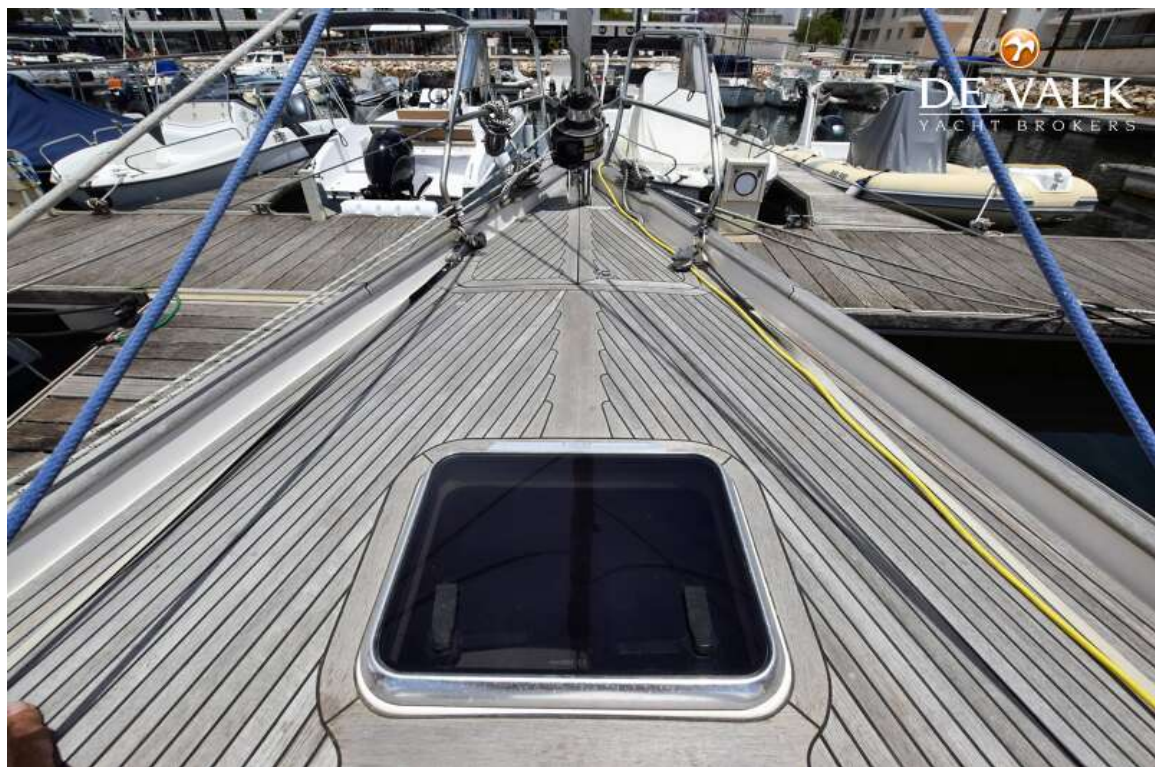
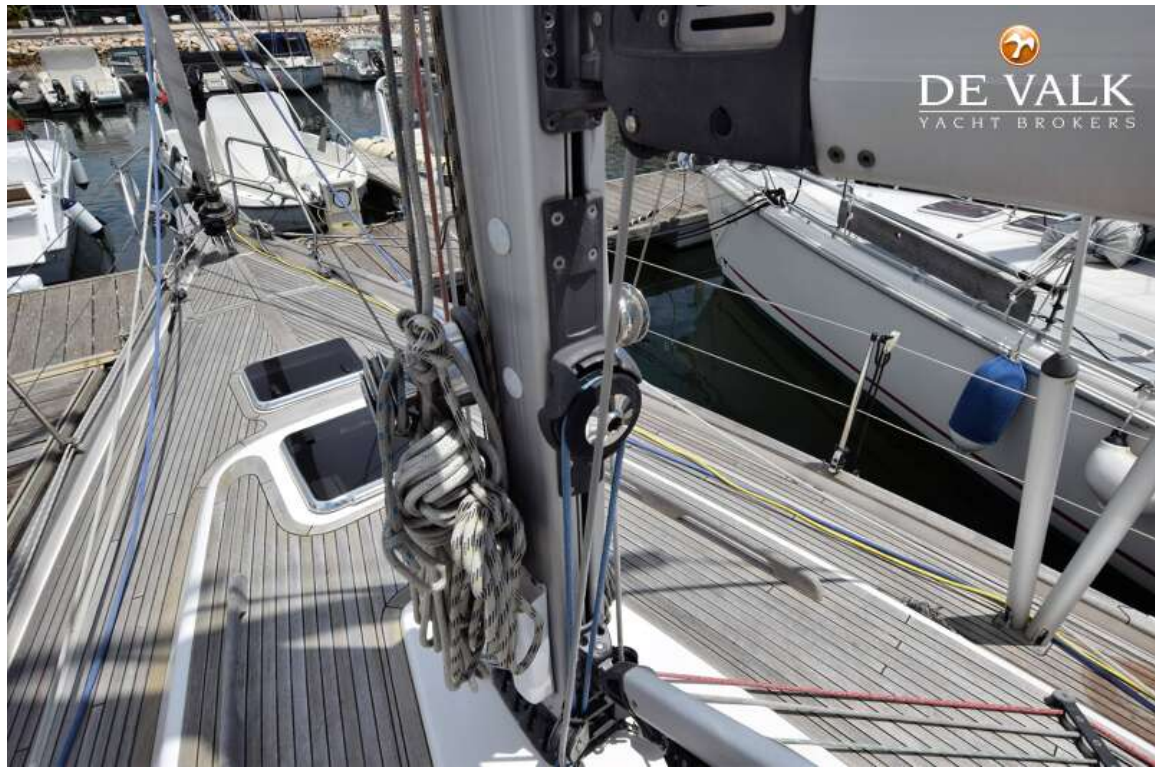
NAJAD 405



NAJAD 405



NAJAD 405



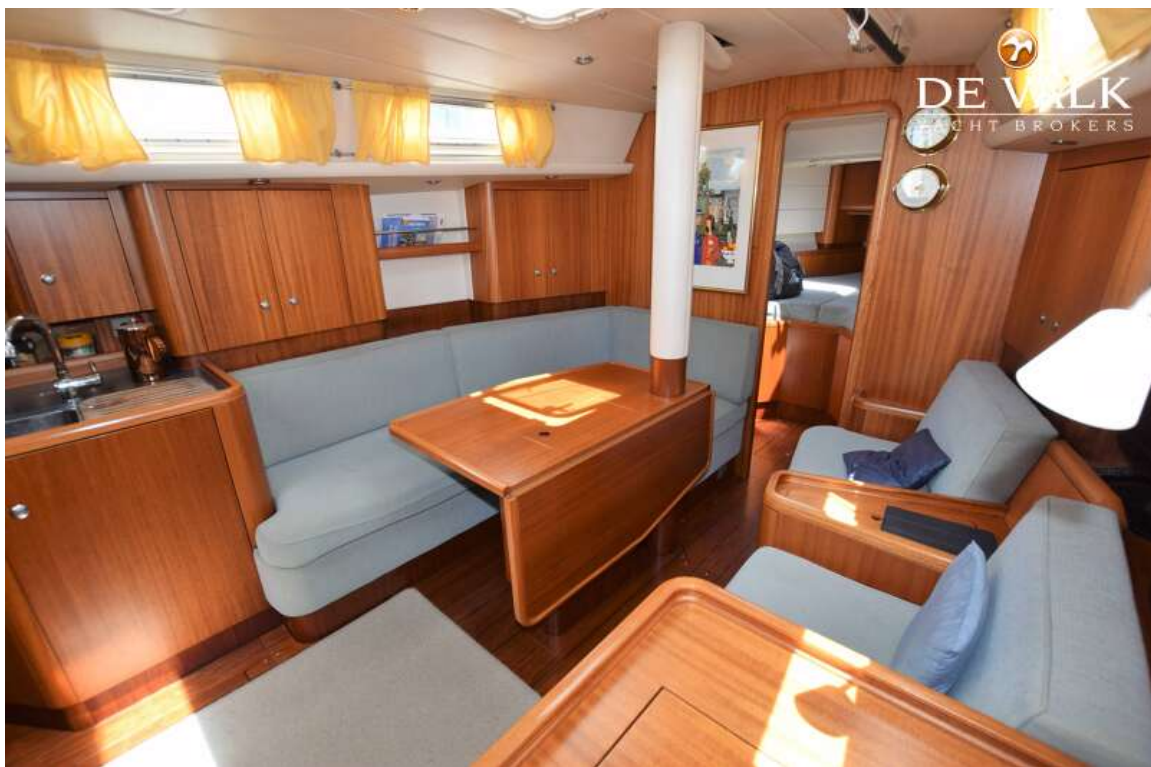
NAJAD 405



NAJAD 405



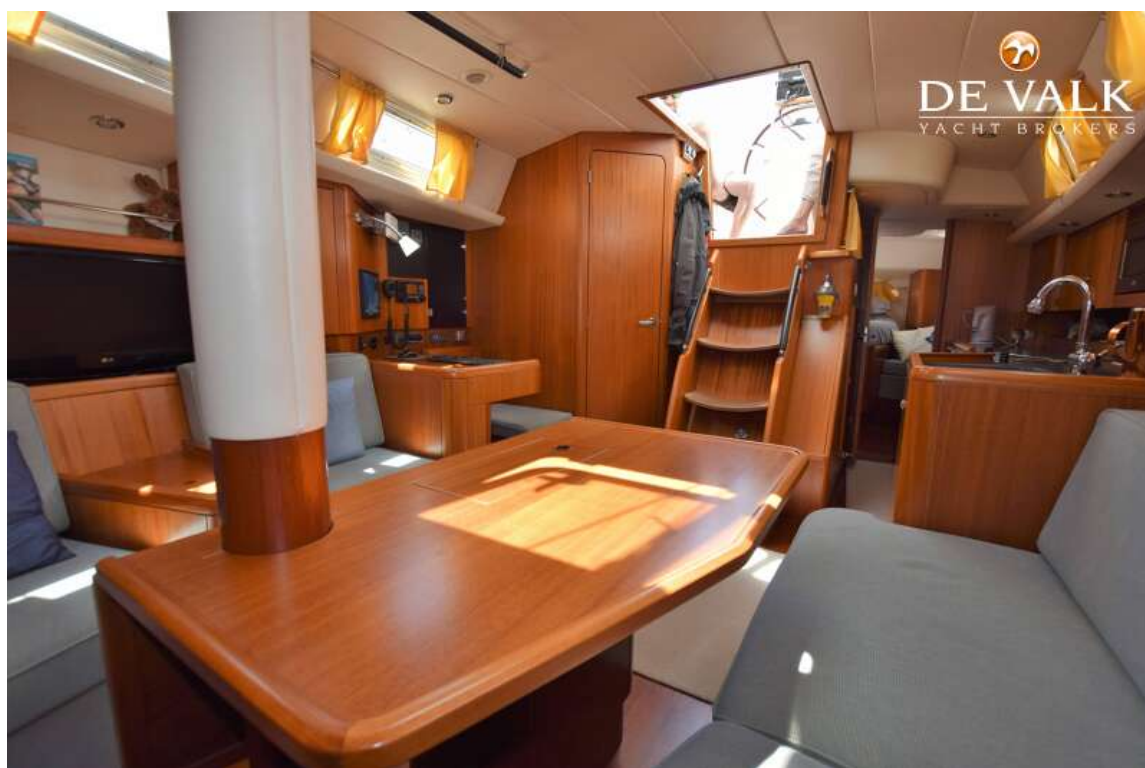
NAJAD 405



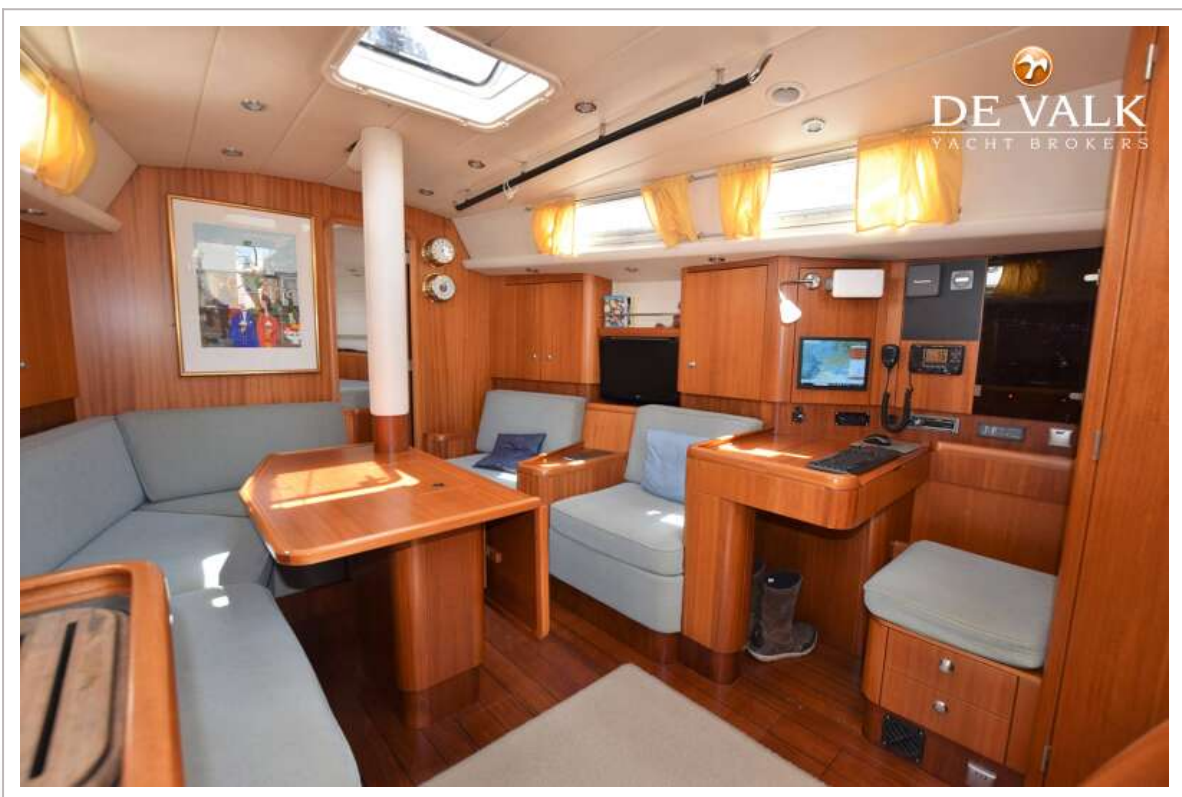
NAJAD 405



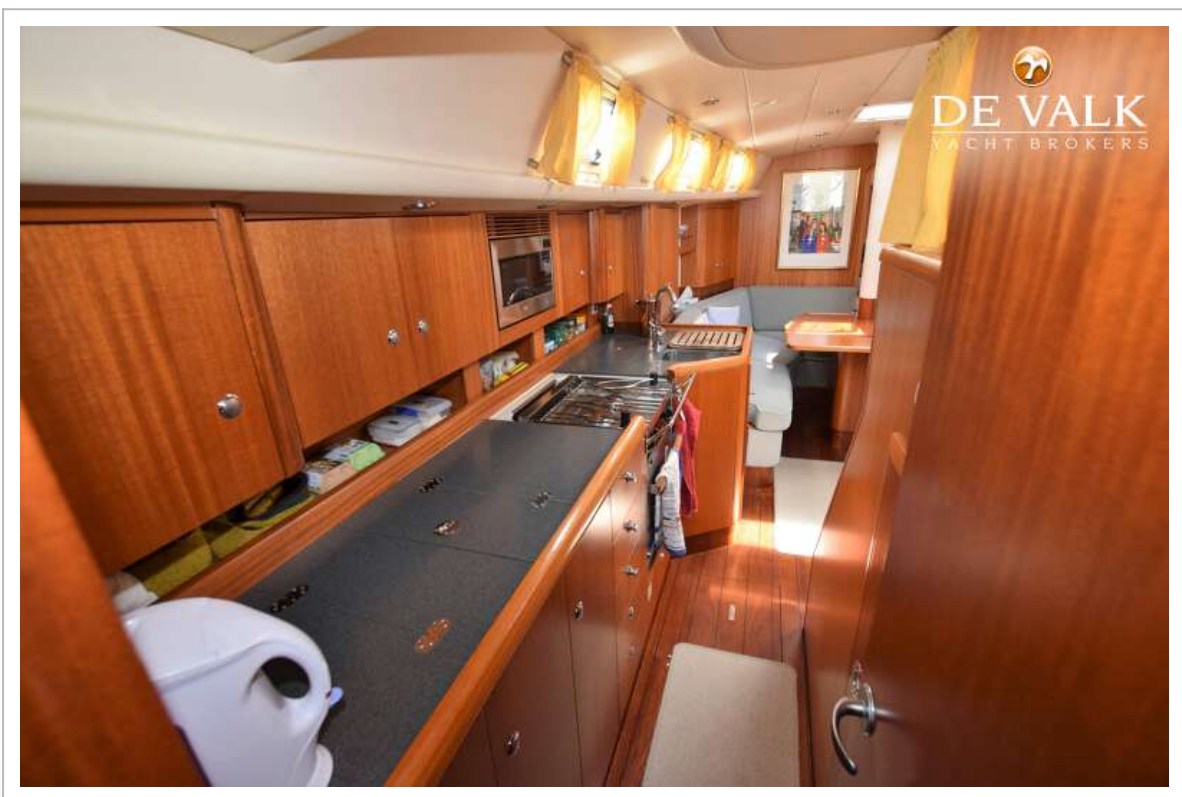
NAJAD 405



NAJAD 405



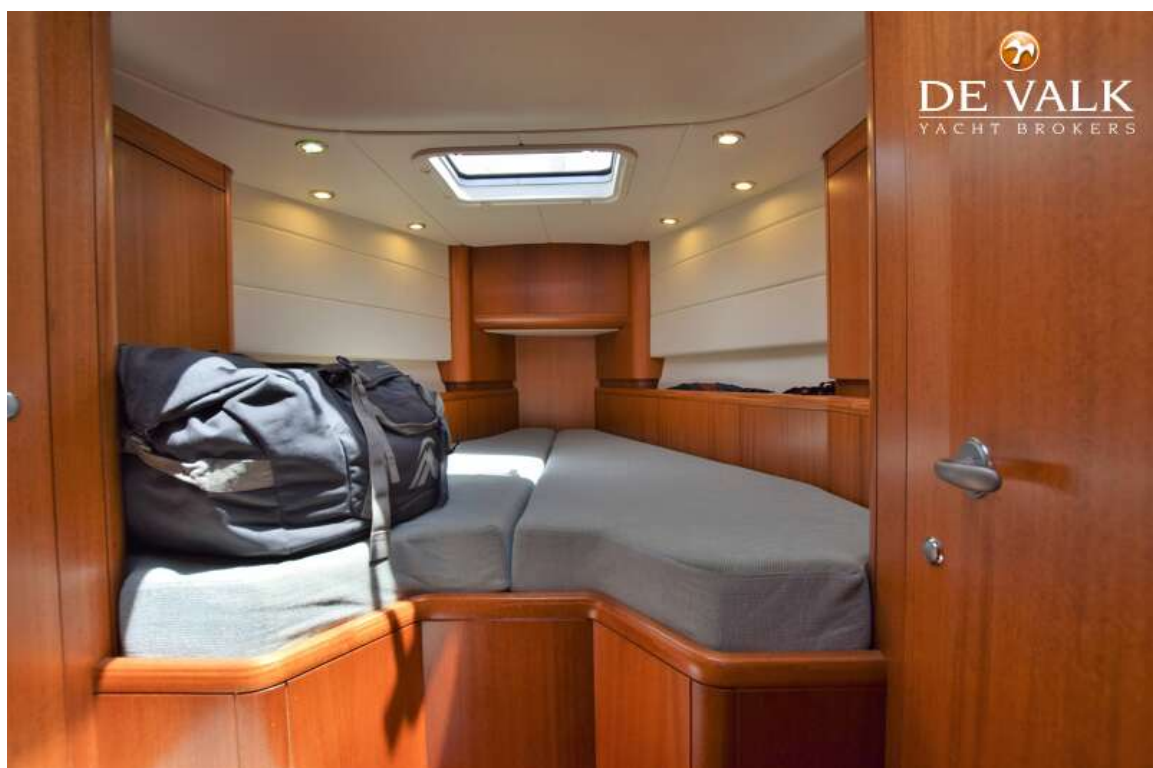
NAJAD 405



NAJAD 405



NAJAD 405



NAJAD 405



