



DE VALK
YACHT BROKERS



BENETEAU OCEANIS 400



DE VALK
YACHT BROKERS

BROKERAGE | CHARTER | BERTHS | FINANCE | INSURANCE | YACHT MANAGEMENT

BENETEAU OCEANIS 400

BROKER'S COMMENTS

No matter what your destination is, the Oceanis 400 will take you there in safety, comfort and luxury. Jean Marie Finot designed this second generation Oceanis to provide her owners with plenty of cruising performance and comfort, blended with safety and true ease of handling. She sailed many in Northern Europe by her private owners and is now available in the med. sea since her Swedish owner decided to sell her. So enjoy to the fullest onboard the Oceanis 400 where everything is designed to make your days on the water as pleasant as we can make them.

Jörg Hellmich

SPECIFICATIONS

| | | | |
|---------------------|-------------------------------|----------------|------------------------|
| Dimensions | 11.85 x 3.95 x 1.65 (m) | Builder | Beneteau Group |
| Built | 1996 | Cabins | 3 |
| Material | GRP | Berths | 7 |
| Engine(s) | 1 x Volvo Penta D2-50F diesel | Hp/Kw | 51.00 (hp), 37.54 (kw) |
| Asking price | sold (VAT) | Lying | at sales office |

CONTACT

| | | | |
|---------------------|--|------------------|-------------------|
| Sales office | De Valk Almeria | Telephone | +34 950 497 825 |
| Address | Puerto de Almerimar Darsena de la Batea Almerimar ES | E-mail | almeria@devalk.nl |

DISCLAIMER

These particulars are given in good faith as supplied but cannot be guaranteed.



GENERAL

| | |
|----------------------------|----------------------|
| Model | BENETEAU OCEANIS 400 |
| Type | sailing yacht |
| LOA (m) | 11,85 |
| LWL (m) | 11,00 |
| Beam (m) | 3,95 |
| Draft (m) | 1,65 |
| Air draft (m) | 16,50 |
| Headroom (m) | 1,90 |
| Year built | 1996 |
| Launched | 1996 |
| Builder | Beneteau Group |
| Country | France |
| Designer | Group Finot |
| Displacement (t) | 8701 |
| Ballast (tonnes) | 2,4 |
| Gross tonnage | 6,4 |
| CE norm | NA |
| Hull material | GRP |
| Hull colour | white |
| Hull shape | round-bilged |
| Keel type | fin keel with bulb |
| Superstructure material | GRP |
| Deck material | GRP |
| Deck finish | non-skid moulded in |
| Superstructure deck finish | non-skid moulded in |
| Cockpit deck finish | teak |
| Antifouling (year) | 05.2023 |
| Dorades | yes |
| Window frame | aluminium |
| Window material | polycarbonate |



| | |
|------------------------------|------------------|
| Deckhatch | Lewmar |
| Radar arch | Radarpost |
| Fuel tank (litre) | polyethylene 151 |
| Level indicator (fuel tank) | Gauge |
| Freshwater tank (litre) | polyethylene 530 |
| Level indicator (freshwater) | Gauge |
| Wheel steering | cable steering |
| Emergency tiller | yes |

ACCOMMODATION

| | |
|---------------------|--|
| Cabins | 3 |
| Berths | 7 |
| Interior | mahogany |
| Layout | 3 cabin version |
| Floor | wood |
| Saloon | yes |
| Headroom saloon (m) | 1,90 |
| Heating | diesel ducted hot air Eberspächer |
| Heating 2 | electric 220V Alde |
| Chart table | yes |
| Convertible berth | In saloon |
| Galley | Long shape in saloon |
| Countertop | corian |
| Sink | stainless steel Double |
| Cooker | calor gas Dometic lite 2 burner (2018) + Ciara induction hob (230V) 2022 |
| Oven | Dometic |
| Microwave | yes |
| Fridge | Isotherm |
| Freezer | Compartment in fridge |
| Hot water system | 220V + engine Isotemp basic (new element 2023) |



BENETEAU OCEANIS 400

| | |
|------------------------|-----------------------------|
| Water pressure system | electrical |
| Kettle | yes |
| Hot water tap | yes |
| Coffee maker | yes |
| Crockery | yes |
| Owners cabin | double bed Forward |
| Bed length (m) | 2,00 x 1,60 |
| Wardrobe | hanging and shelves |
| Bathroom | en suite |
| Toilet | en suite |
| Toilet system | chemical Organic |
| Wash basin | at the toilet |
| Shower | en suite |
| Guest cabin 1 | double bed Aft Port |
| Bed length (m) | 2,00 x 1,50 |
| Wardrobe | hanging and shelves |
| Bathroom | shared |
| Toilet | shared |
| Toilet system | manual New Jabsco pump 2023 |
| Wash basin | at the toilet |
| Shower | shared |
| Guest cabin 2 | double bed Aft STB |
| Bed length (m) | 2,00 x 1,50 |
| Wardrobe | shelves |
| Washing machine | Small |
| Central vacuum cleaner | yes |

MACHINERY

| | |
|---------------|-------------|
| No of engines | 1 |
| Make | Volvo Penta |
| Type | D2-50F |



BENETEAU OCEANIS 400

| | |
|--------------------------|-----------------------------------|
| HP | 51 |
| kW | 37.54 |
| Fuel | diesel |
| Year installed | 2021 |
| Year of overhaul | New in 2020 |
| Maximum speed (kn) | 8 |
| Cruising speed (kn) | 6 |
| Consumption (l/hr) | 2,5 |
| Range (nm) | 350 |
| Engine hours | 564 |
| Engine cooling system | freshwater heat exchanger |
| Drive | shaft |
| Saildrive seal | yes |
| Shaft seal | New in 2021 + cutless bearing |
| Engine controls | bowden cable |
| Gearbox | hydraulic |
| Bowthruster | electric Sleipner SP80 (2021) |
| Exhaust | watercooled |
| Propeller type | fixed |
| Propeller blades | 3 |
| Propeller shaft material | stainless steel |
| Shaft lubrication | water |
| Manual bilge pump | yes |
| Electric bilge pump | yes |
| Electrical installation | 12V System |
| Start battery | 1 x 12V / 75 Ah Acid |
| Service battery | 3 x 12V / 100 Amp AGM (2019-2020) |
| Bowthruster battery | yes |
| Battery monitor | Display |
| Battery charger/inverter | yes |
| Solar panel | 300 Watts (2022) |
| Diode battery combiners | yes |



| | |
|------------|------------------|
| Shorepower | with cable 230V |
| Extra info | Dehumidifier |
| Extra info | Sewing machine |
| Extra info | Diving equipment |

NAVIGATION

| | |
|---------------------|------------------------------------|
| Compass | Plastimo |
| Depth sounder/log | Raymarine i70s (2021) |
| Windset | Raymarine i70s (2021) |
| VHF | Lowrans Link 9 (NEW not installed) |
| VHF handheld | Icom |
| Autopilot | Autohelm ST6000 |
| Radar | Simrad Halo 20 (2021) |
| Plotter/GPS | Simrad GO xse 9" (Navionics) 2021 |
| Navtex | Furuno NX 300 (defect) |
| Electronic chart(s) | Navionics |
| AIS transceiver | AIS True Heading |
| EPIRB | Rapid fix 46 |
| Navigation lights | yes |

EQUIPMENT

| | |
|------------------|-----------------|
| Sprayhood | Custom (2017) |
| Cockpit cover | Custom (2017) |
| Bimini | yes |
| Cockpit cushions | Custom 2017 |
| Cockpit table | yes |
| Bathing platform | yes |
| Boarding ladder | stainless steel |
| Transom door | yes |
| Gangway | Aluminum |
| Deck shower | yes |



| | |
|----------------------------|------------------------------|
| Anchor | CQR Plough |
| Anchor chain | yes |
| Windlass | Lofrans Tigre 1000W |
| Dinghy | AQ 270 |
| Outboard | Suzuki 4 stroke, 6 HP (2019) |
| Outboard support | yes |
| Sea railing | wire |
| Grab rail (superstructure) | teak |
| Railing side opening gates | yes |
| Pushpit | yes |
| Pulpit | yes |
| Life raft | container |
| Life raft (pers) | 4 |
| Lifejackets | 2 |
| Fenders | yes |
| Mooring lines | yes |
| Spare parts | yes |
| Tools | yes |
| TV | 12V 18" & 32" |
| Radio-cd player | yes |
| Cockpit speakers | yes |
| Speakers in salon | yes |
| Clock - barometer | yes |
| Fire extinguisher | yes |

RIGGING

| | |
|------------------|-----------|
| Rigging | sloop |
| Standing rigging | wire |
| Brand mast | Seldén |
| Material mast | aluminium |
| Spreaders | 2 sets |



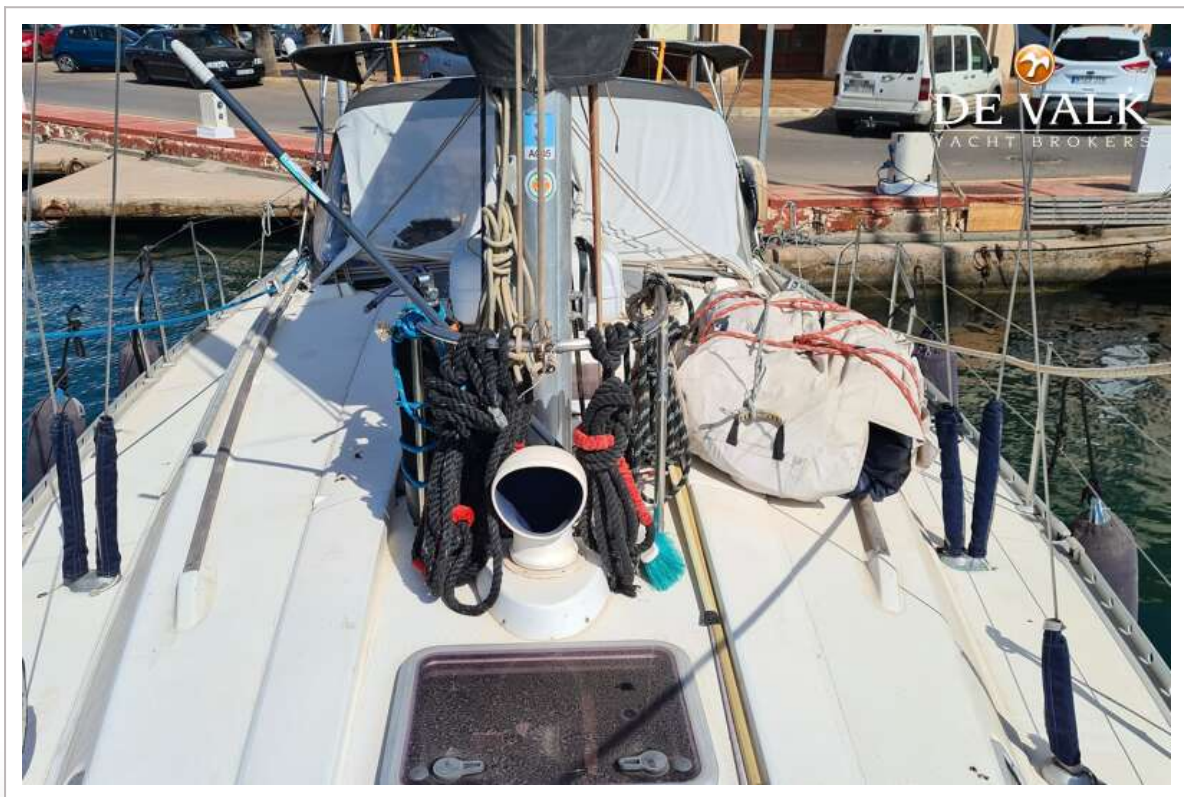
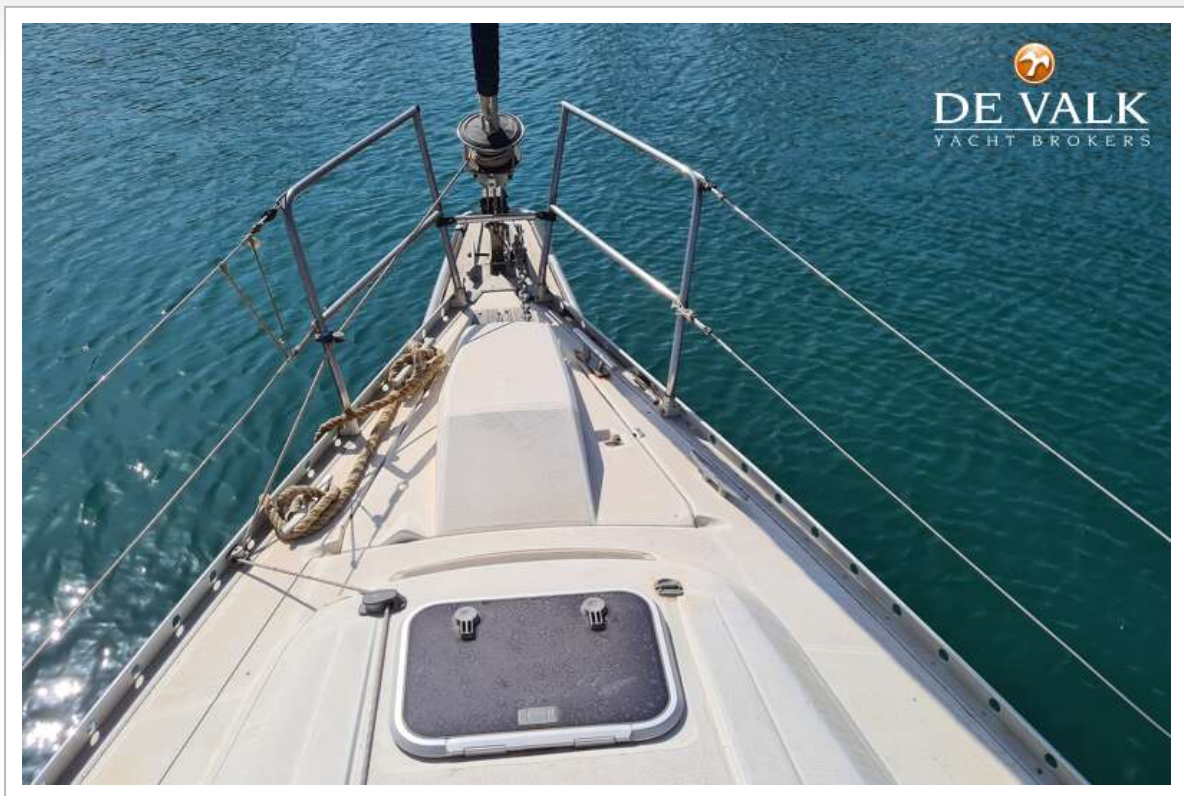
| | |
|--------------------------------|--------------------------|
| Mainsail | yes |
| Battcars | yes |
| Fully battened mainsail | Tuss sail custom (2016) |
| Genoa | Tuss Genoa custom (2016) |
| Genoa furler | Furlex |
| Gennaker | With sock |
| Reefing System | slabreefing |
| Boomvang | mechanical and tackle |
| Primary sheet winch | 2 x Harken ST 2SP 30" |
| Genoa sheetwinches | 2 x Harken ST 2SP 44" |



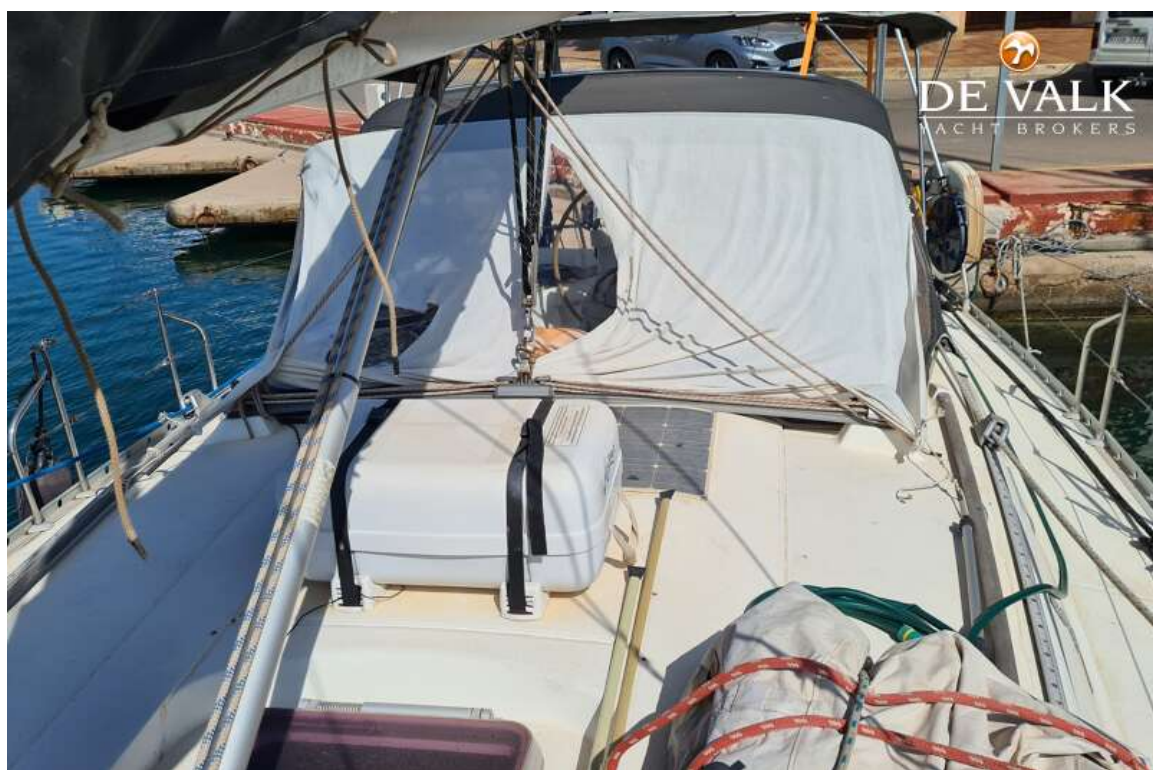
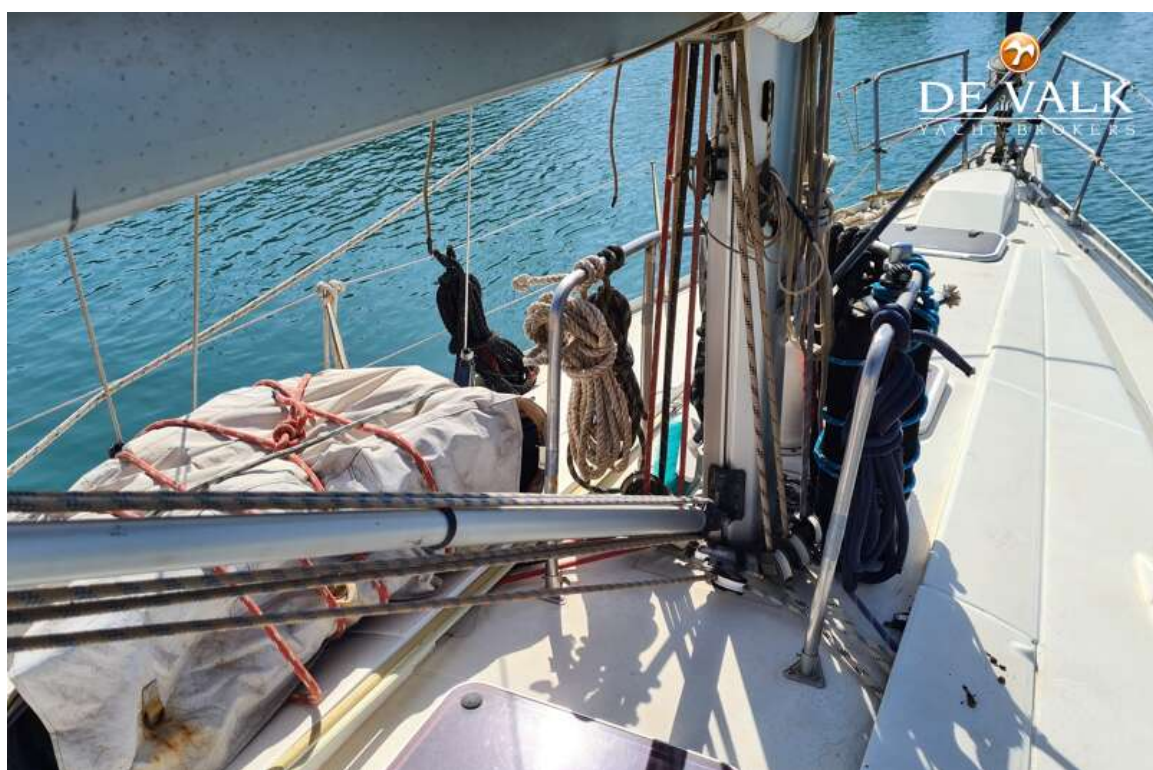
BENETEAU OCEANIS 400



BENETEAU OCEANIS 400



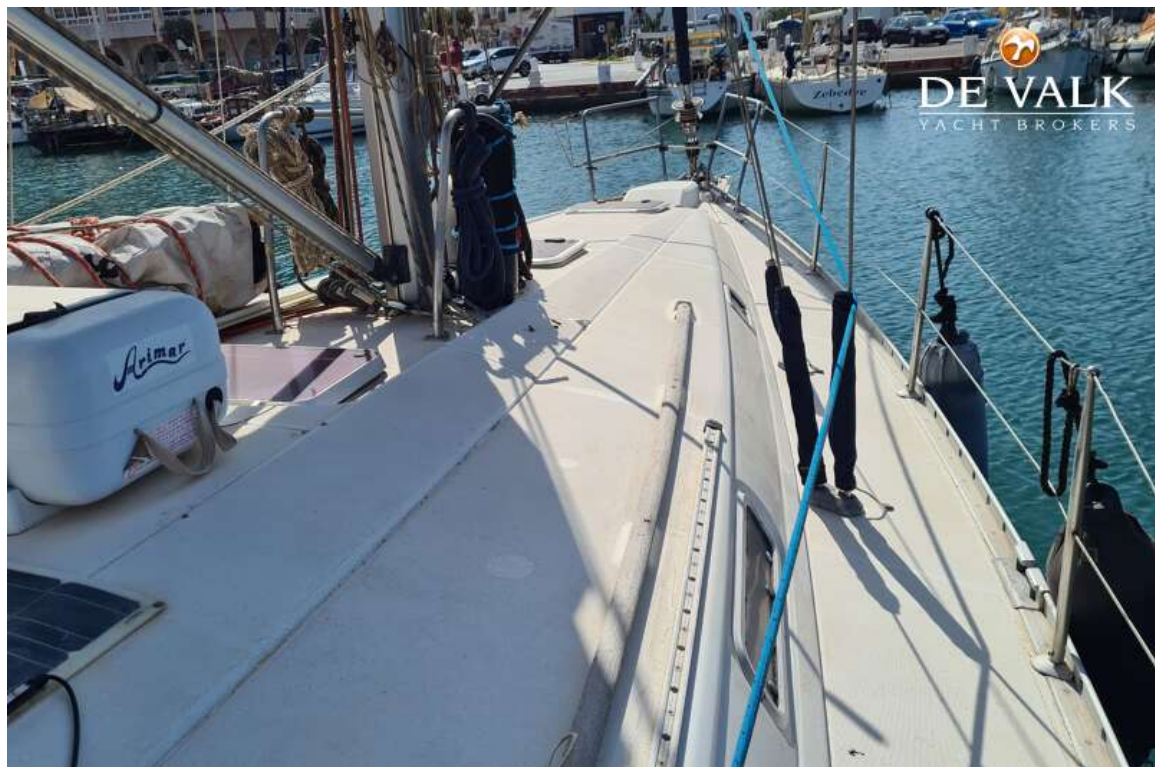
BENETEAU OCEANIS 400



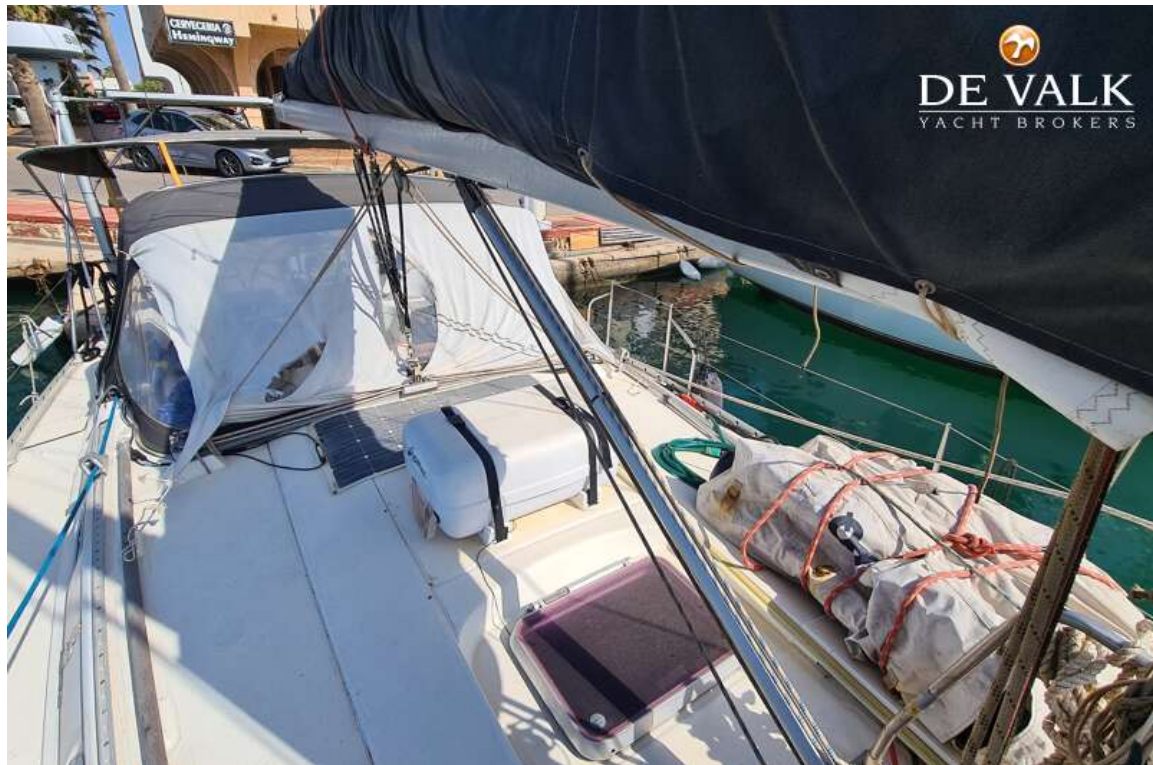
BENETEAU OCEANIS 400



BENETEAU OCEANIS 400



BENETEAU OCEANIS 400



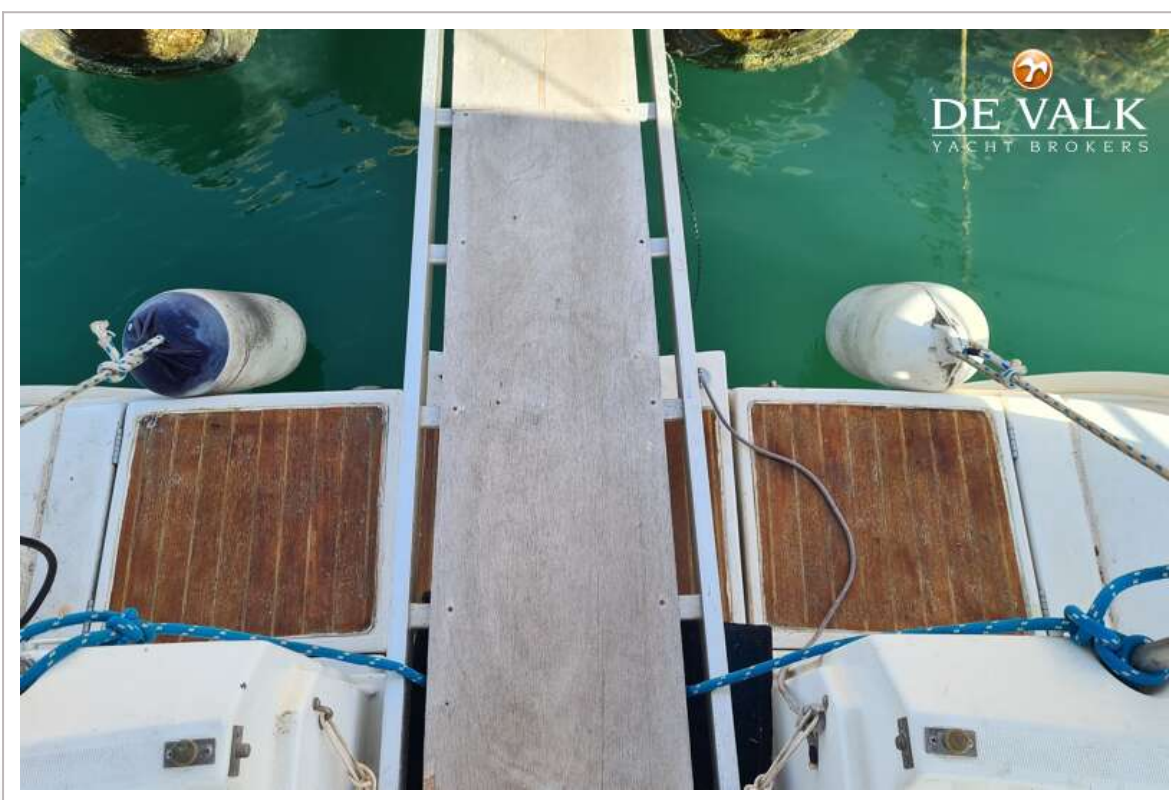
BENETEAU OCEANIS 400



BENETEAU OCEANIS 400



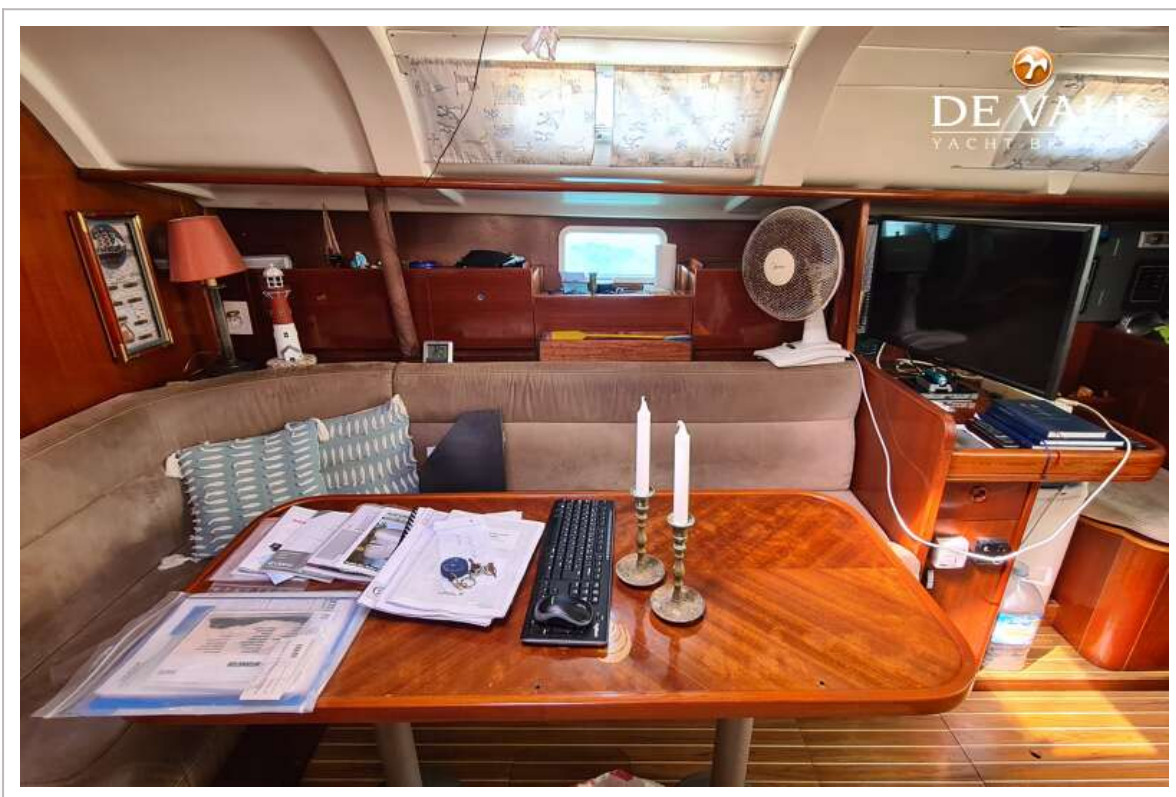
BENETEAU OCEANIS 400



BENETEAU OCEANIS 400



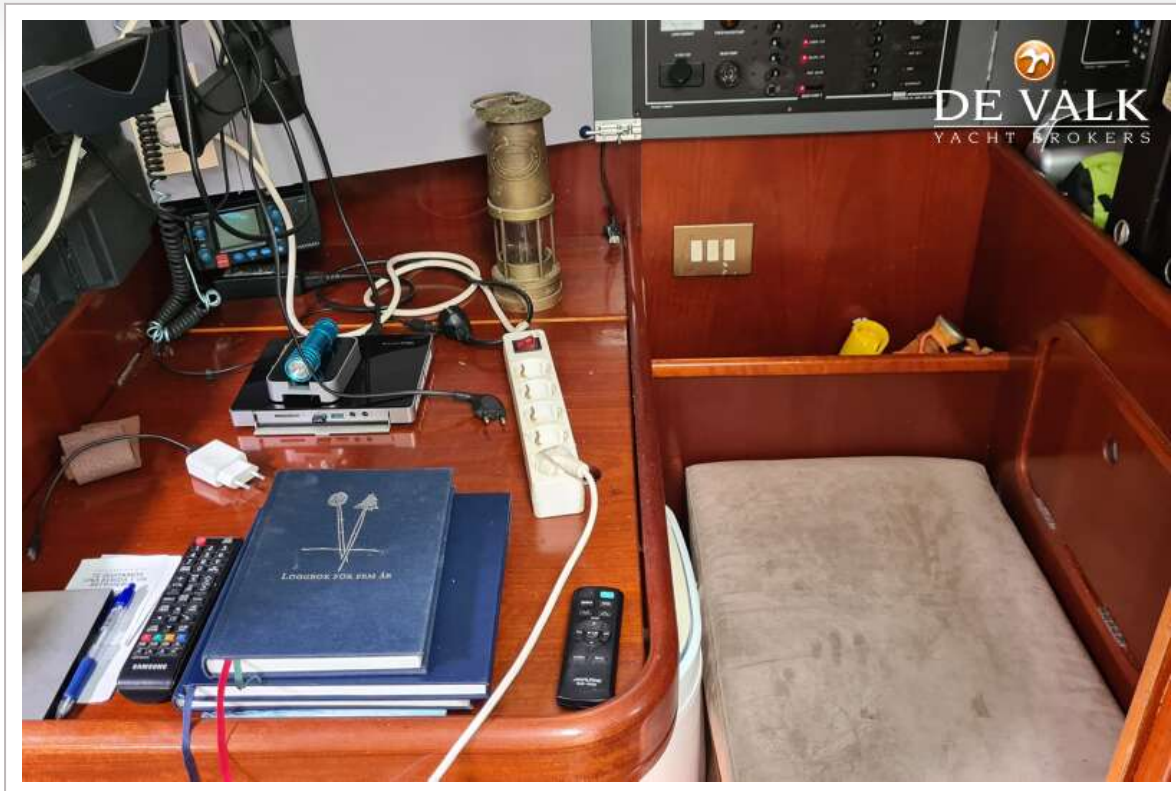
BENETEAU OCEANIS 400



BENETEAU OCEANIS 400



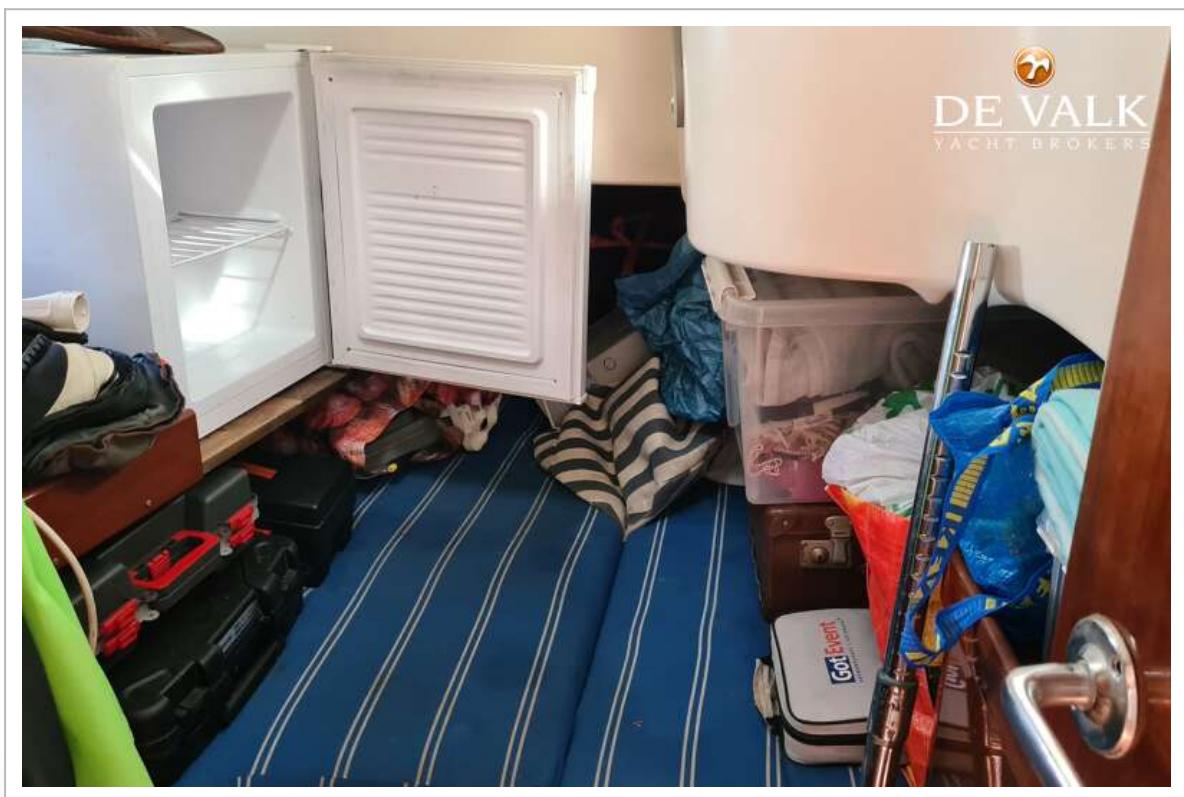
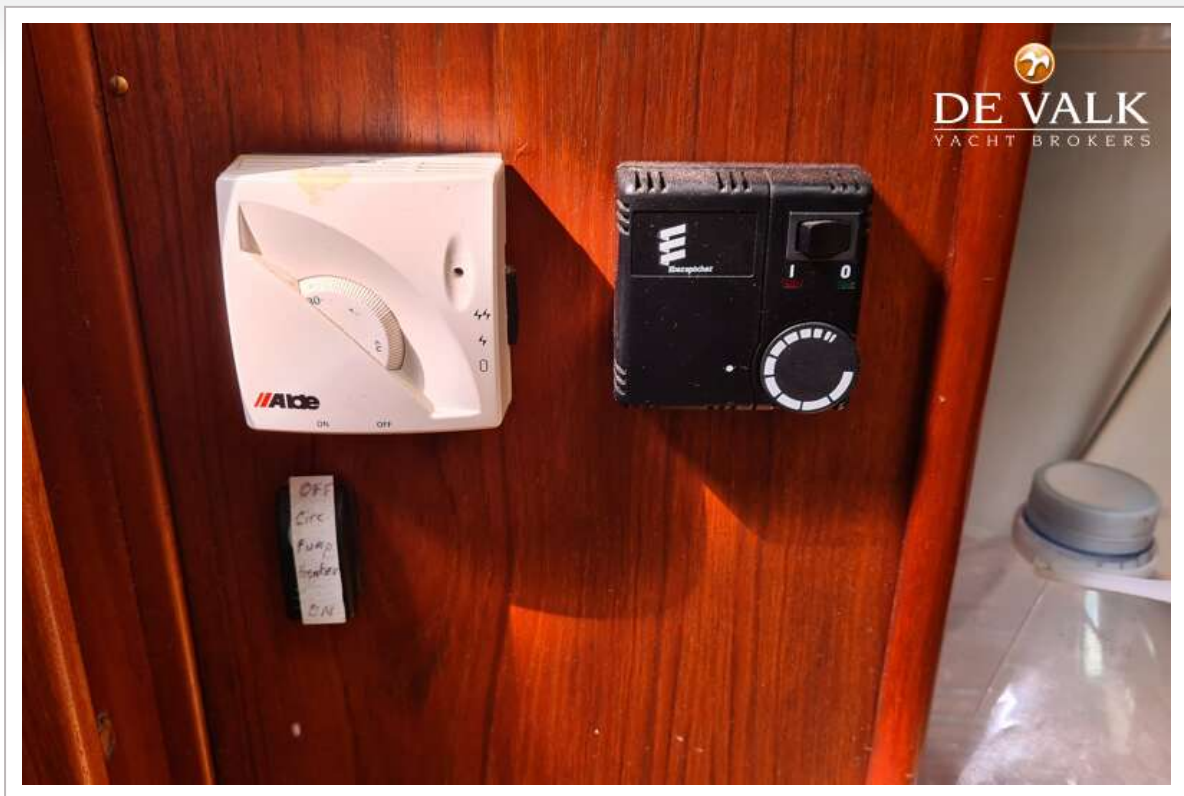
BENETEAU OCEANIS 400



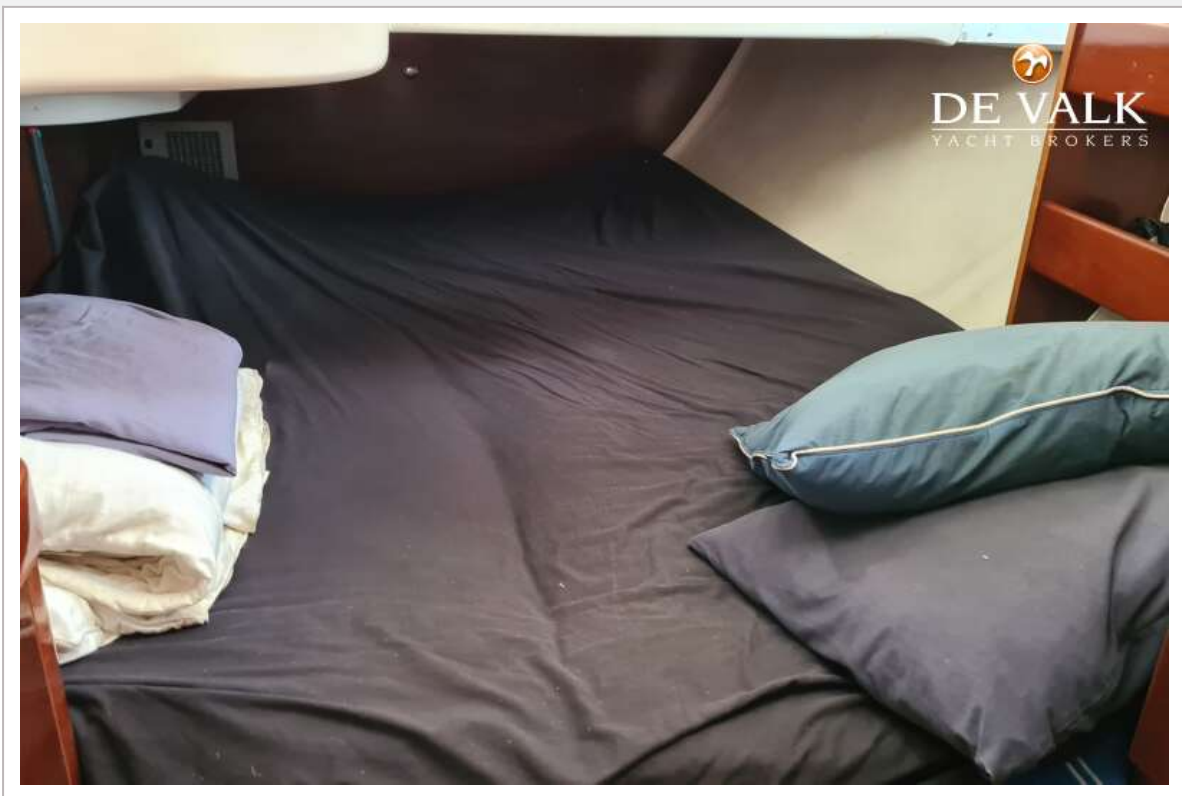
BENETEAU OCEANIS 400



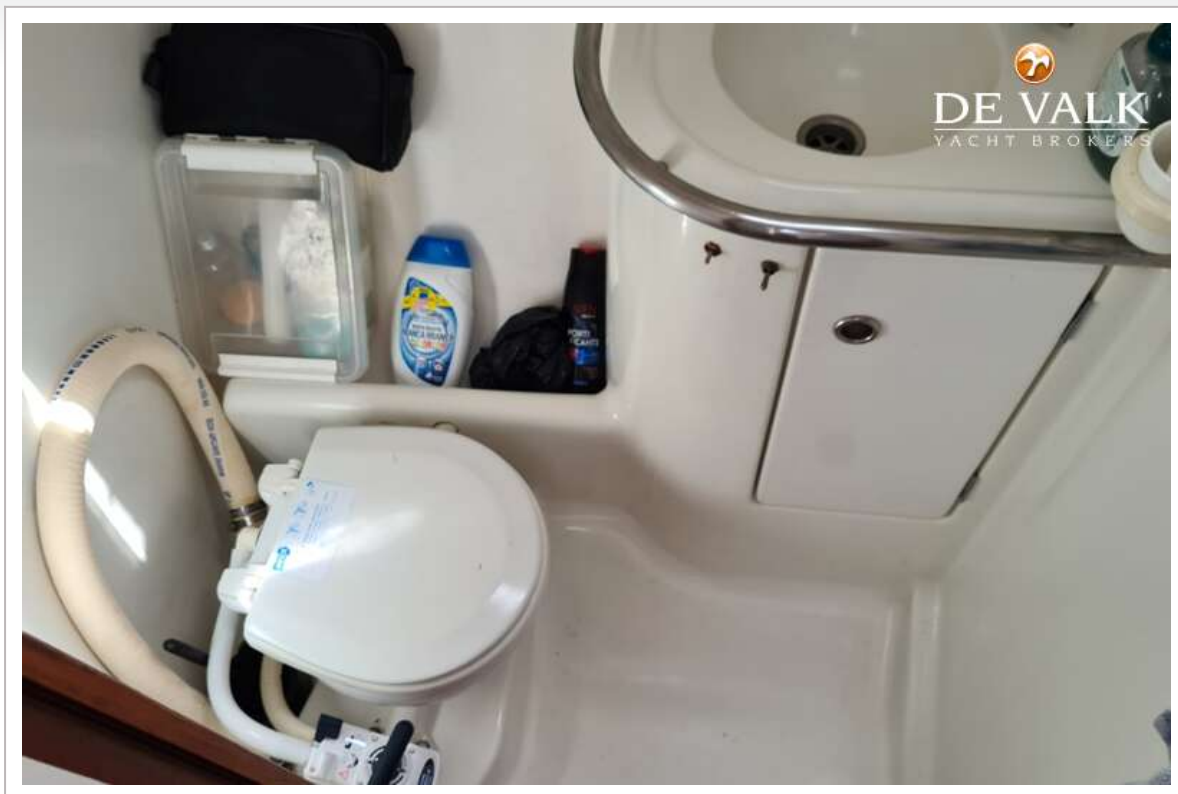
BENETEAU OCEANIS 400



BENETEAU OCEANIS 400



BENETEAU OCEANIS 400



BENETEAU OCEANIS 400



BENETEAU OCEANIS 400

