



DE VALK
YACHT BROKERS



SAFFIER SC10 CABIN



DE VALK
YACHT BROKERS

SAFFIER SC10 CABIN

BROKER'S COMMENTS

This Sapphire SC10 is a true modern classic with its beautiful timeless lines. The combination of her dark blue hull with the synthetic teak and beige covers gives a lovely contrast. It is a real eye-catcher as you sail into the harbour. Saffier is also known for her high-quality Dutch construction. Would you like to view this beautiful boat? Then feel free to drop by our office in Loosdrecht.

Mark Hesselmans

SPECIFICATIONS

Dimensions	10.00 x 2.50 x 1.15 (m)	Builder	Saffier Yachts
Built	2012	Cabins	1
Material	GRP	Berths	2
Engine(s)	1 x Yanmar 2YM15 diesel	Hp/Kw	15.00 (hp), 11.04 (kw)
Asking price	sold (VAT)	Lying	at sales office

CONTACT

Sales office	De Valk Loosdrecht B.V.	Telephone	+31 (0)35 582 90 30
Address	't Breukeleveense Meentje 6 1231LM Loosdrecht / Wijdmeren NL	E-mail	loosdrecht@devalk.nl

DISCLAIMER

These particulars are given in good faith as supplied but cannot be guaranteed.



SAFFIER SC10 CABIN

GENERAL

Model	SAFFIER SC10 CABIN
Type	sailing yacht
LOA (m)	10,00
Beam (m)	2,50
Draft (m)	1,15
Year built	2012
Launched	2014
Builder	Saffier Yachts
Country	The Netherlands
Hull material	GRP
Hull colour	blue
Hull shape	round-bilged
Keel type	fin keel with bulb
Superstructure material	GRP
Deck material	GRP
Deck finish	synthetic teak
Cockpit deck finish	synthetic teak
Window frame	stainless steel
Window material	glass
Deckhatch	yes
Fuel tank (litre)	polyethylene
Level indicator (fuel tank)	yes
Blackwater tank (litre)	yes
Wheel steering	mechanical
Outside helm position	mechanical
Emergency tiller	yes

ACCOMMODATION

Cabins	1
Berths	2



SAFFIER SC10 CABIN

Interior	teak
Floor	teak
Open cockpit	yes
Heating	diesel ducted hot air Webasto
Sink	stainless steel
Cooker	calor gas 2 burner
Fridge	Isotherm drawer
Water pressure system	electrical
Toilet	shared
Toilet system	manual

MACHINERY

No of engines	1
Make	Yanmar
Type	2YM15
HP	15
kW	11.04
Fuel	diesel
Engine cooling system	freshwater heat exchanger
Saildrive seal	yes
Engine controls	bowden cable
Gearbox	mechanical
Exhaust	watercooled
Propeller type	folding
Manual bilge pump	yes
Batteries	yes
Start battery	yes
Service battery	yes
Battery charger	yes
Shorepower	with cable
Extra info	220 plugs onboard on shorepower



SAFFIER SC10 CABIN

NAVIGATION

Compass	Plastimo
Depth sounder	Raymarine I50
Log	Raymarine I50
Windset	Raymarine I50 display + Raymarine St60+ Instrument
Autopilot	Raymarine ST6000
Rudder angle indicator	Autopilot
Navigation lights	yes

EQUIPMENT

Sprayhood	yes
Winter cover	yes
Cockpit table	yes
Boarding ladder	yes
Anchor	yes
Fenders	yes
Mooring lines	yes
Radio	yes
Cockpit speakers	yes
Speakers in salon	yes

RIGGING

Rigging	sloop
Standing rigging	wire
Brand mast	Seldén
Material mast	aluminium
Spreaders	2
Mainsail	Laminate
Mainsail cover	yes
Jib	Laminate



SAFFIER SC10 CABIN

Gennaker

yes

Extra info

1 electrical winch



SAFFIER SC10 CABIN



SAFFIER SC10 CABIN



SAFFIER SC10 CABIN



SAFFIER SC10 CABIN



SAFFIER SC10 CABIN



SAFFIER SC10 CABIN



SAFFIER SC10 CABIN



SAFFIER SC10 CABIN



SAFFIER SC10 CABIN



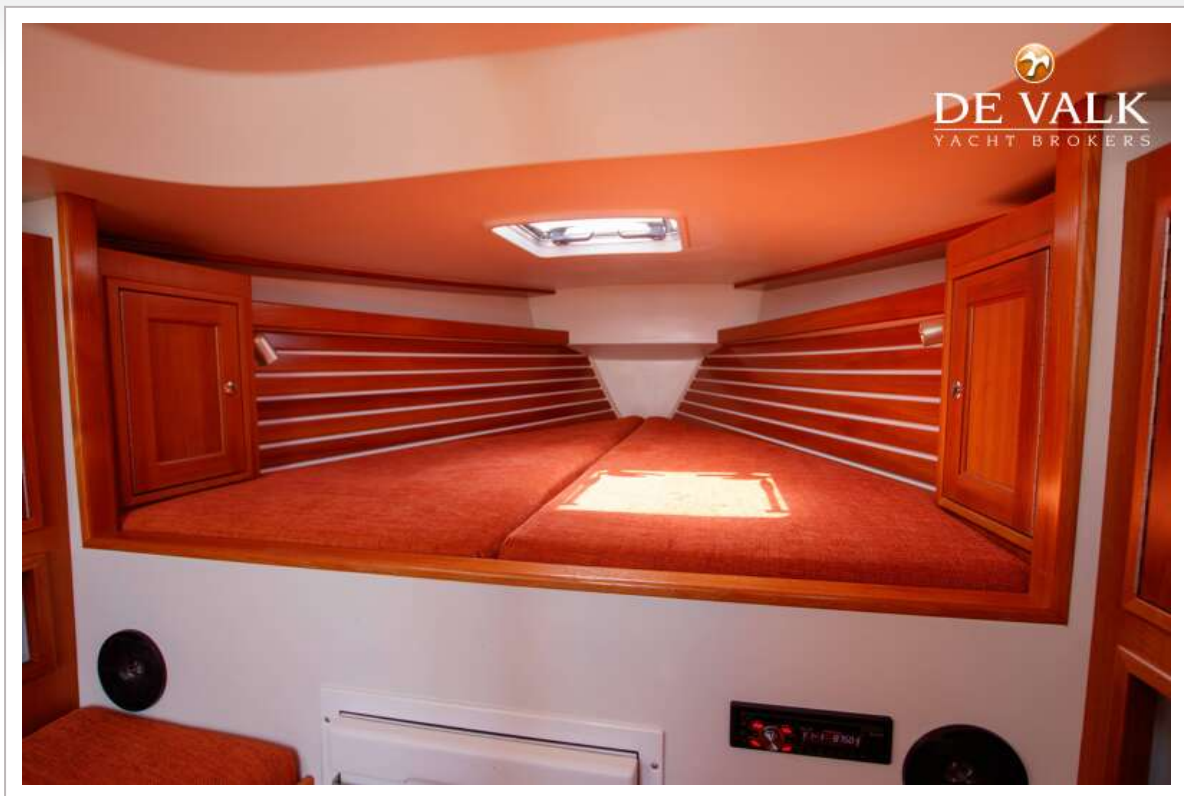
SAFFIER SC10 CABIN



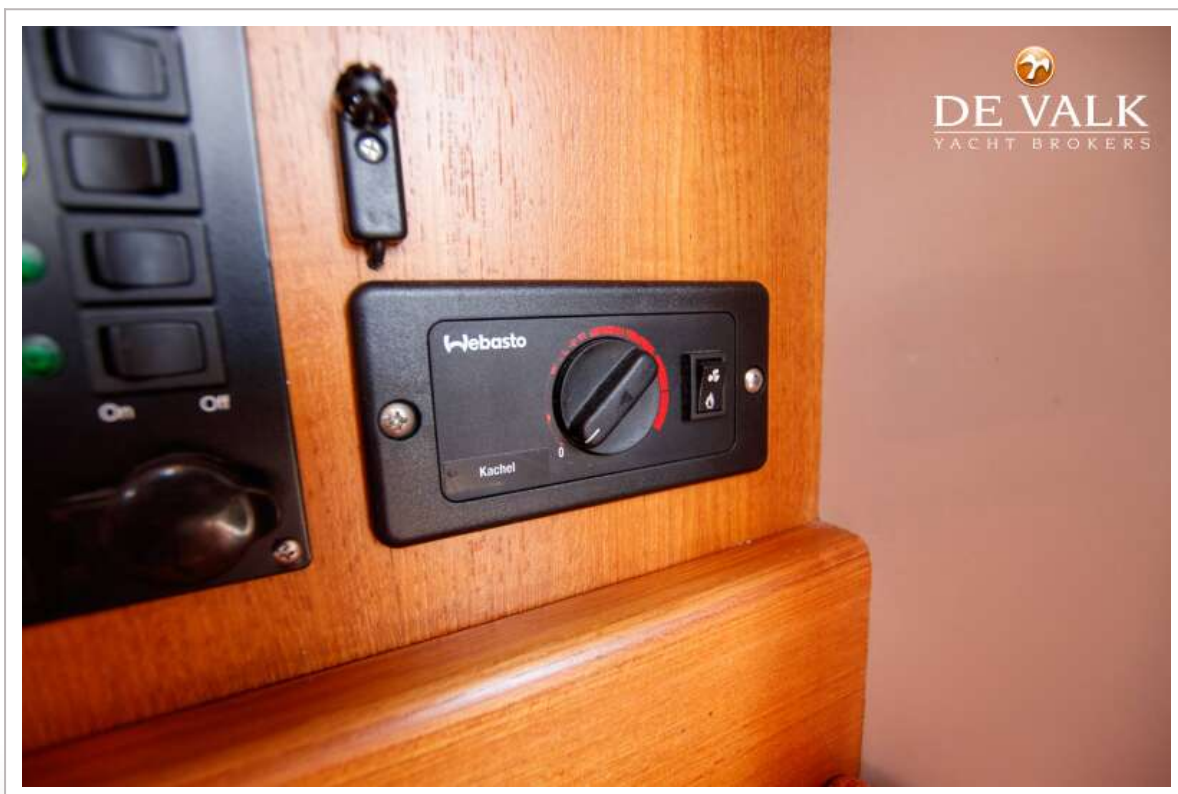
SAFFIER SC10 CABIN



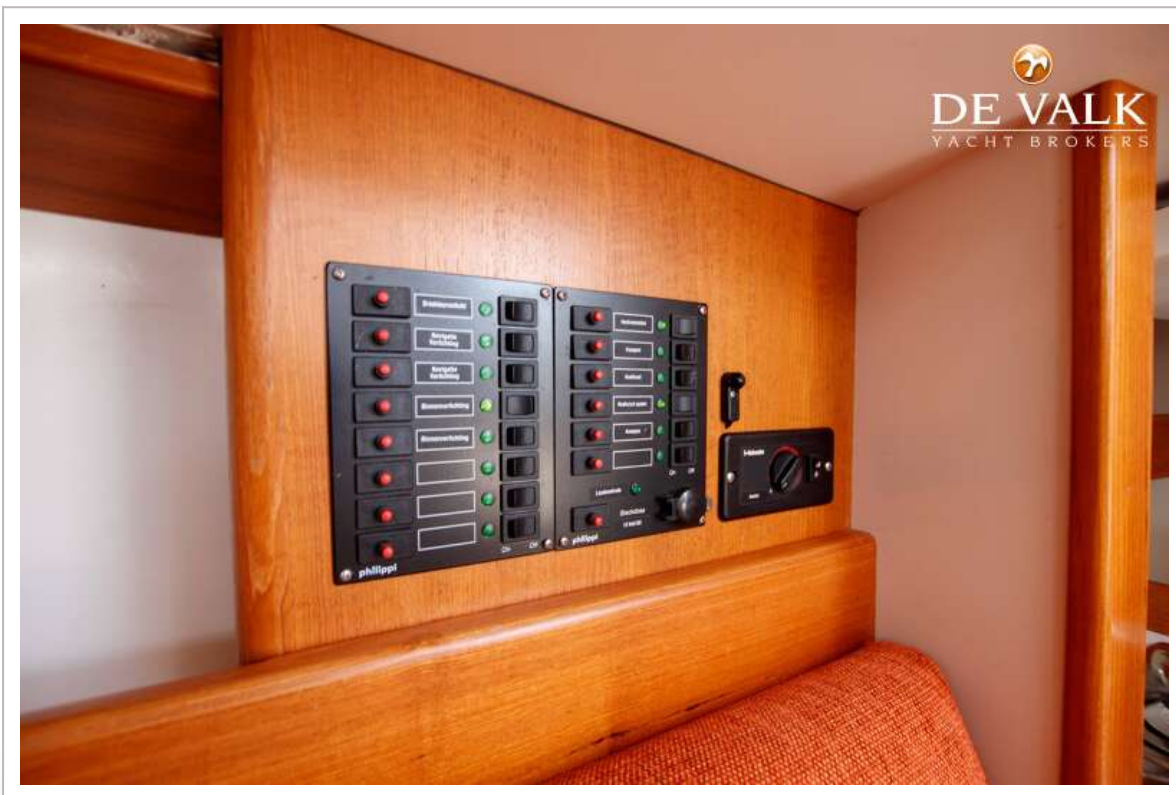
SAFFIER SC10 CABIN



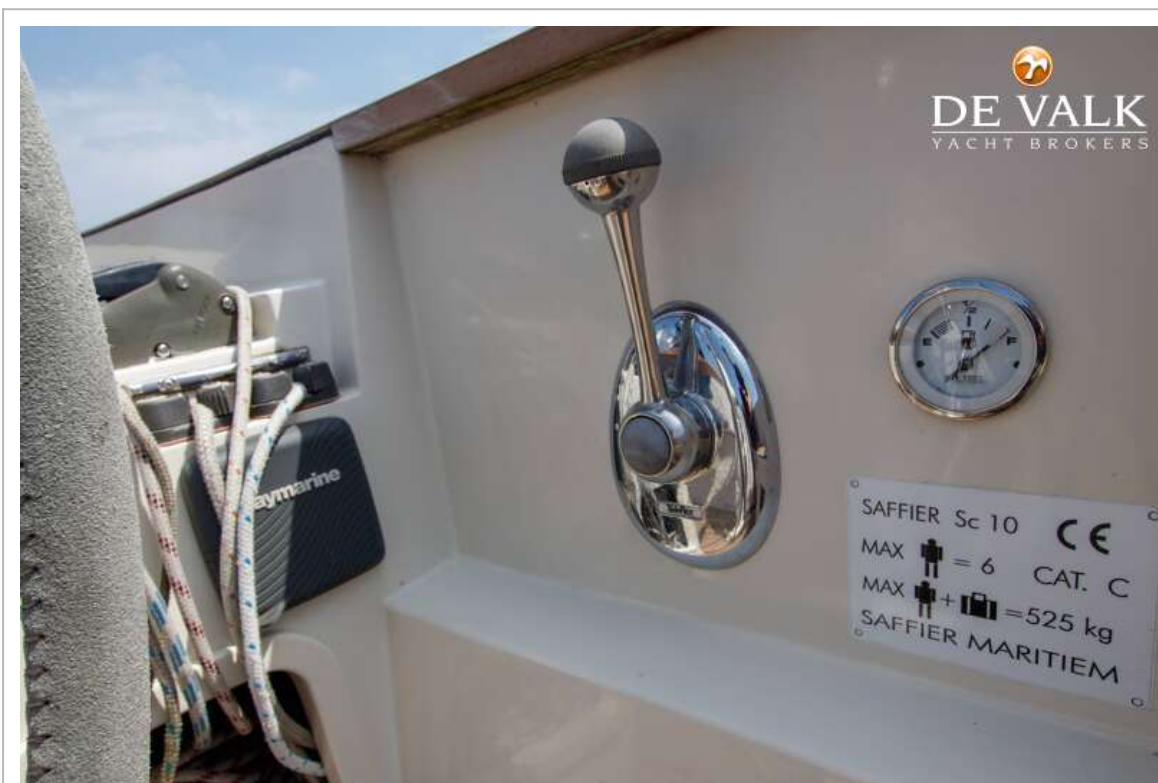
SAFFIER SC10 CABIN



SAFFIER SC10 CABIN



SAFFIER SC10 CABIN



SAFFIER SC10 CABIN



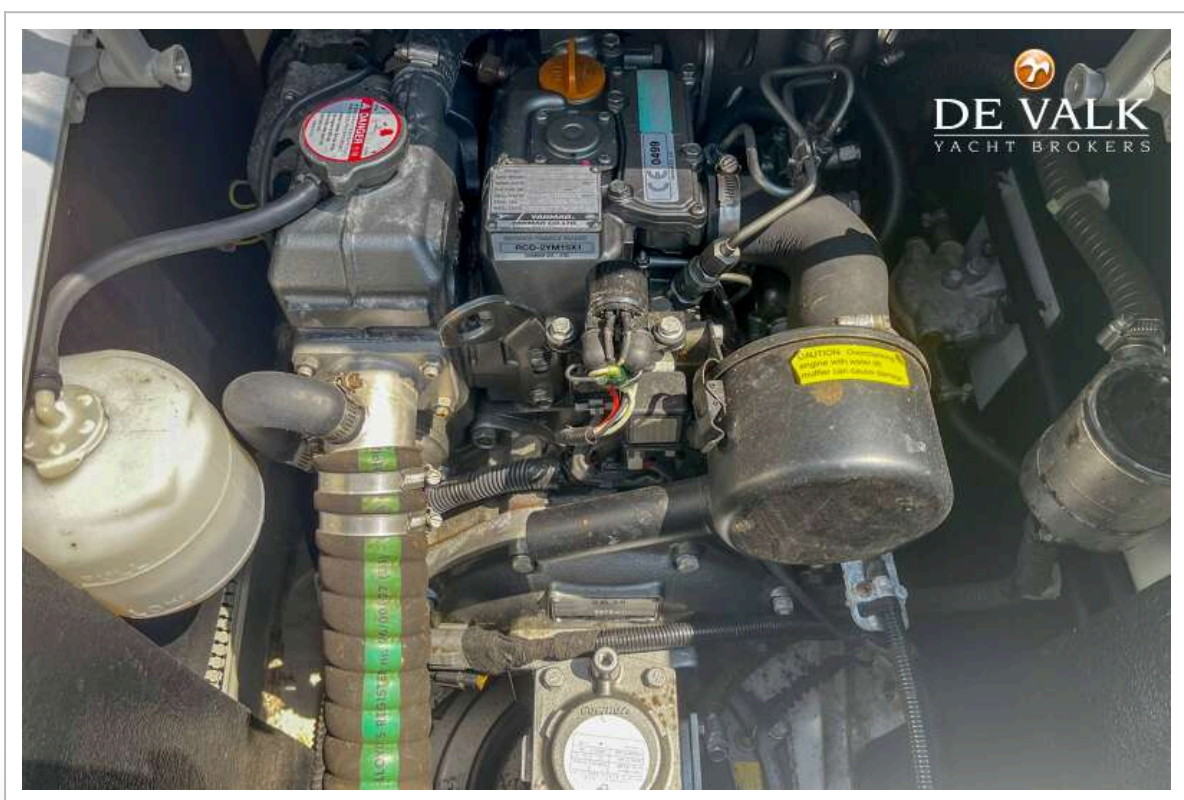
SAFFIER SC10 CABIN



SAFFIER SC10 CABIN



SAFFIER SC10 CABIN



SAFFIER SC10 CABIN

