



DE VALK  
YACHT BROKERS



HANSE 430



DE VALK  
YACHT BROKERS

## BROKER'S COMMENTS

This beautiful Hanse 430 is in perfect condition and comes very well equipped. Spacious and safe cockpit and rigged for short handed sailing with electric winches and self tacking jib, retractable bow thruster and electric windlass. The performance matches the modern design features and a joy at the helm. The popular layout with centerline double berth forward with own bathroom and twin double aft with shared facilities . Ideal for (performance) cruising with family and friends. No charter.

*Johan Schootstra*

## SPECIFICATIONS

<b>Dimensions</b>	13.15 x 4.18 x 2.25 (m)	<b>Builder</b>	Hanse yacht AG
<b>Built</b>	2010	<b>Cabins</b>	3
<b>Material</b>	GRP	<b>Berths</b>	6
<b>Engine(s)</b>	1 x Yanmar 4JH5E diesel	<b>Hp/Kw</b>	55.00 (hp), 40.48 (kw)
<b>Asking price</b>	sold (VAT )	<b>Lying</b>	at sales office

## CONTACT

<b>Sales office</b>	De Valk Hindeloopen B.V.	<b>Telephone</b>	+31 514 52 40 00
<b>Address</b>	Oosterstrand 1 8713 JS Hindeloopen NL	<b>E-mail</b>	hindeloopen@devalk.nl

## DISCLAIMER

These particulars are given in good faith as supplied but cannot be guaranteed.



## GENERAL

<b>Model</b>	HANSE 430
<b>Type</b>	sailing yacht
<b>LOA (m)</b>	13,15
<b>Beam (m)</b>	4,18
<b>Draft (m)</b>	2,25
<b>Air draft (m)</b>	21,90
<b>Headroom (m)</b>	1,95
<b>Year built</b>	2010
<b>Builder</b>	Hanse yacht AG
<b>Country</b>	Germany
<b>Designer</b>	Judel & Vrolijk
<b>Displacement (t)</b>	10,6
<b>Ballast (tonnes)</b>	3,2 tonnes
<b>CE norm</b>	A
<b>Hull material</b>	GRP
<b>Hull colour</b>	grey
<b>Hull shape</b>	round-bilged
<b>Keel type</b>	fin keel with bulb
<b>Superstructure material</b>	GRP
<b>Rubbing strake</b>	stainless steel
<b>Deck material</b>	GRP
<b>Cockpit deck finish</b>	teak
<b>Antifouling (year)</b>	new 2023
<b>Window frame</b>	aluminium
<b>Window material</b>	polycarbonate Tempered glass and
<b>Deckhatch</b>	3 opening flush hatches - Lewmar
<b>Fuel tank (litre)</b>	stainless steel 230 ltr.
<b>Level indicator (fuel tank)</b>	yes
<b>Freshwater tank (litre)</b>	polyethylene 325 ltr.
<b>Blackwater tank (litre)</b>	polyethylene 2x



<b>Blackwater tank extraction</b>	deck extraction + uw line
<b>Wheel steering</b>	2x Jefa
<b>Emergency tiller</b>	yes

## ACCOMMODATION

<b>Cabins</b>	3
<b>Berths</b>	6
<b>Interior</b>	mahogany
<b>Open cockpit</b>	yes
<b>Saloon</b>	yes
<b>Headroom saloon (m)</b>	1,95 mtr.
<b>Heating</b>	diesel ducted hot air 2x Eberspächer
<b>Navigation center</b>	yes
<b>Chart table</b>	yes
<b>Aft Cabin</b>	two cabins
<b>Galley</b>	yes
<b>Countertop</b>	corian
<b>Sink</b>	stainless steel   Double
<b>Cooker</b>	calor gas   2 burner
<b>Oven</b>	In cooker
<b>Fridge</b>	Isotherm + freezer compartment   extra large 12 V fridge of approx. 130 l, top and front loader.
<b>Hot water system</b>	220V + engine
<b>Water pressure system</b>	electrical
<b>Owners cabin</b>	double bed
<b>Bed length (m)</b>	2 mtr.
<b>Wardrobe</b>	hanging/drawers/shelves
<b>Bathroom</b>	en suite
<b>Toilet</b>	Jabsco   new 2022
<b>Toilet system</b>	manual
<b>Wash basin</b>	yes



Shower	yes
Guest cabin 1	double bed Aft cabin
Bed length (m)	2 mtr.
Wardrobe	hanging and shelves
Guest cabin 2	double bed Aft cabin
Bed length (m)	2 mtr.
Wardrobe	hanging and shelves
Bathroom	shared
Toilet	2022 Jabsco
Toilet system	electric
Wash basin	yes
Shower	yes

## MACHINERY

No of engines	1
Make	Yanmar
Type	4JH5E
HP	55
kW	40.48
Fuel	diesel
Year installed	2010
Maximum speed (kn)	8
Cruising speed (kn)	7
Engine hours	2907
Engine cooling system	freshwater heat exchanger
Drive	sail-drive
Saildrive seal	yes
Engine controls	yes
Gearbox	mechanical
Bowthruster	electric   RCM Marine   retractable
Exhaust	watercooled



<b>Propeller type</b>	folding
<b>Propeller blades</b>	3
<b>Manual bilge pump</b>	yes
<b>Electric bilge pump</b>	yes
<b>Bilge alarm</b>	yes
<b>Electrical installation</b>	12 / 220 Volt
<b>Start battery</b>	1x 70 Ah
<b>Service battery</b>	2x 150Ah   Victron Energy
<b>Bowthruster battery</b>	yes
<b>Battery monitor</b>	Victron Energy
<b>Battery charger/inverter</b>	Sterling Power Pro Charge 12v / 50A Victron Energy MultiPlus 12V   1600Va   70Ah
<b>Shorepower</b>	with cable

## NAVIGATION

<b>Compass</b>	Plastimo Contest 130
<b>Multi control display</b>	Raymarine ST60+ TRIDATA
<b>Windset</b>	Raymarine ST60+ WIND & 2x CH WIND
<b>VHF</b>	Raymarine RAY240E   new 2023 with external speaker and handset Ray90
<b>Autopilot</b>	Raymarine ST6002 + SmartController   Revision carried out
<b>Radar</b>	Raymarine
<b>Radar/GPS/plotter</b>	Raymarine C120 W
<b>AIS receiver</b>	yes
<b>Navigation lights</b>	yes

## EQUIPMENT

<b>Sprayhood with grab rail</b>	yes
<b>Cockpit cover</b>	yes
<b>Cockpit table</b>	yes
<b>Boarding ladder</b>	stainless steel



Deck shower	new 2022
Anchor	Delta
Anchor chain	Stainless steel
Windlass	electrical   Lewmar
Dinghy	inflatable   new 2022
Outboard	6 hp (2 Hours only)   new 2022
Outboard support	yes
Sea railing	wire
Grab rail (superstructure)	stainless steel
Pushpit	yes
Pulpit	yes
Fenders	yes
Mooring lines	yes
Radio-cd player	Clarion
Cockpit speakers	yes
Speakers in salon	yes
Clock - barometer	yes
Fire extinguisher	Inspected 2022

## RIGGING

Rigging	fractional
Standing rigging	wire Checked and cleaned
Brand mast	Seldén
Material mast	aluminium Checked and cleaned
Spreaders	2 pair
Mainsail	North Sails Dacron
Mainsail cover	with main-drop bag
Battcars	yes
Fully battened mainsail	yes
Jib	North Sails Dacron
Genoa furler	Under deck furling system



<b>Code Zero</b>	North Sails Kevlar hardly used
<b>Gennaker</b>	North Sails Aprox 140m2 hardly used
<b>Self tacking jib installation</b>	yes
<b>Reefing System</b>	quick-one-line-reefing   3x
<b>Backstay adjuster</b>	hydraulic
<b>Boomvang</b>	gasspring
<b>Primary sheet winch</b>	4x Lewmar 46   one electric
<b>Halyard winches</b>	2x Lewmar 46   one electric
<b>Winchcovers</b>	yes





# HANSE 430



# HANSE 430



# HANSE 430



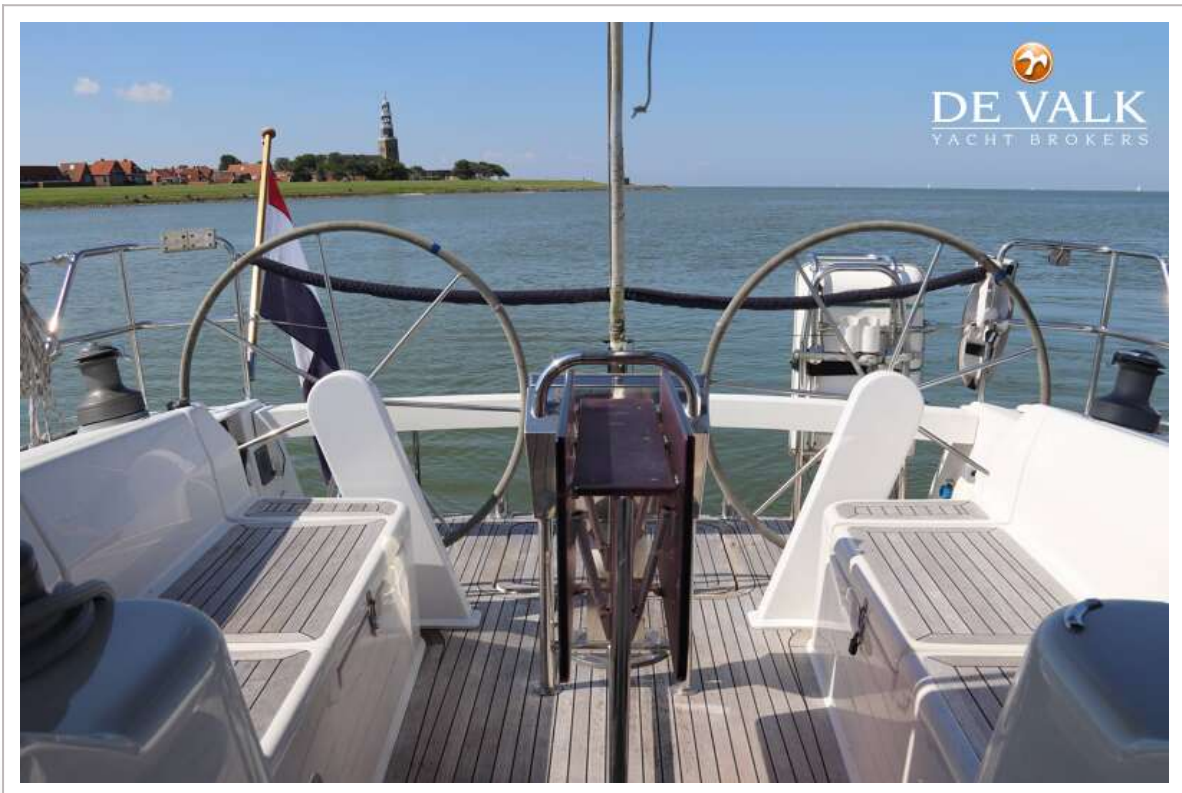
# HANSE 430



# HANSE 430



# HANSE 430



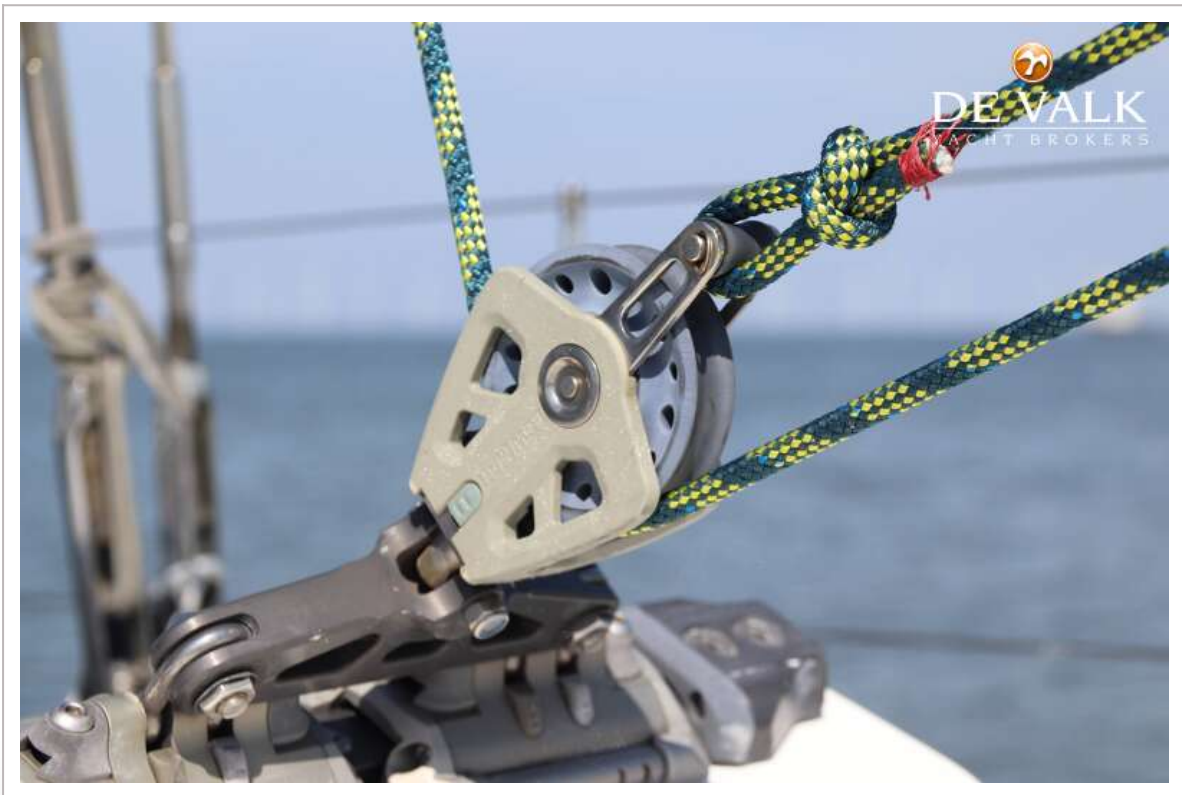
# HANSE 430



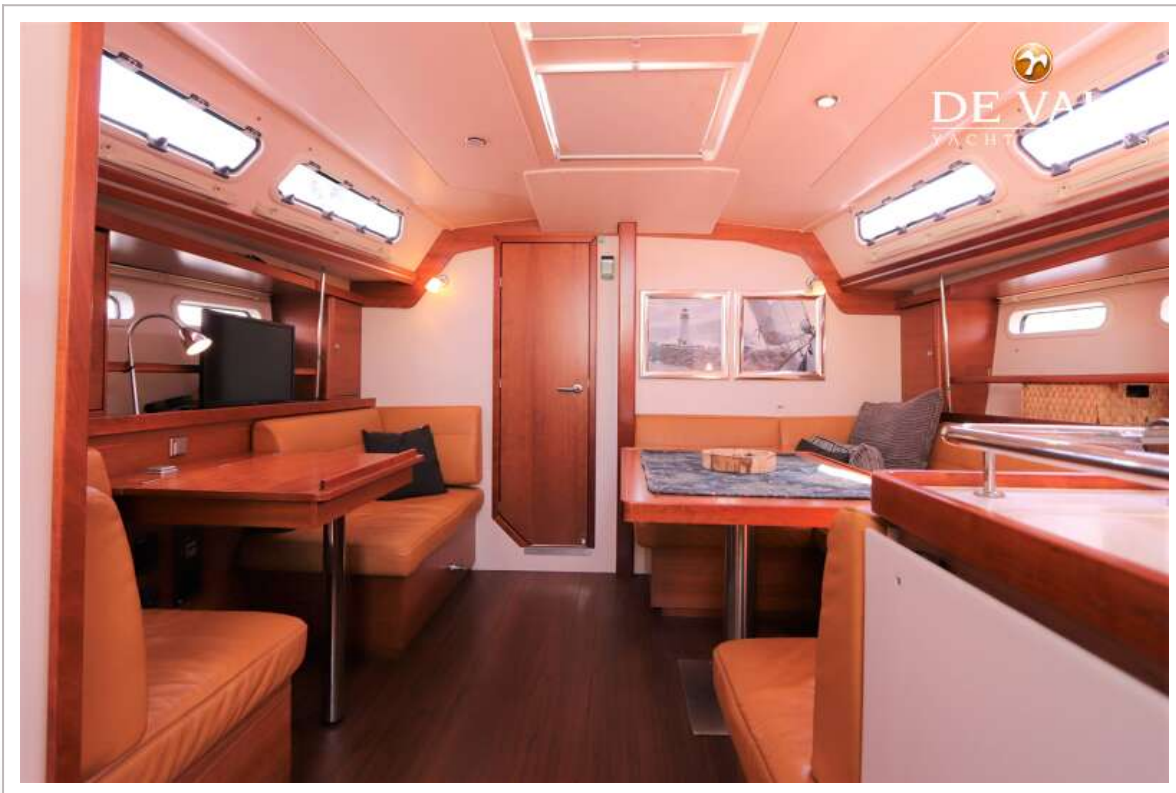
# HANSE 430







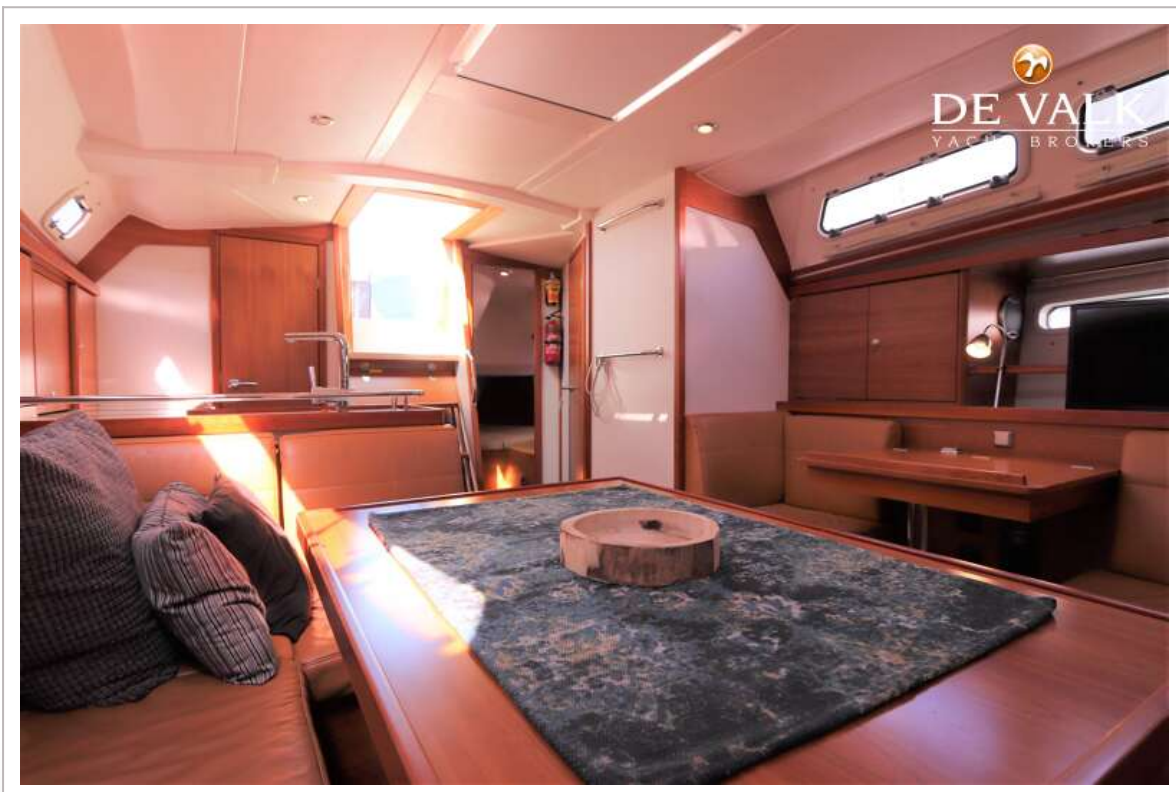
# HANSE 430



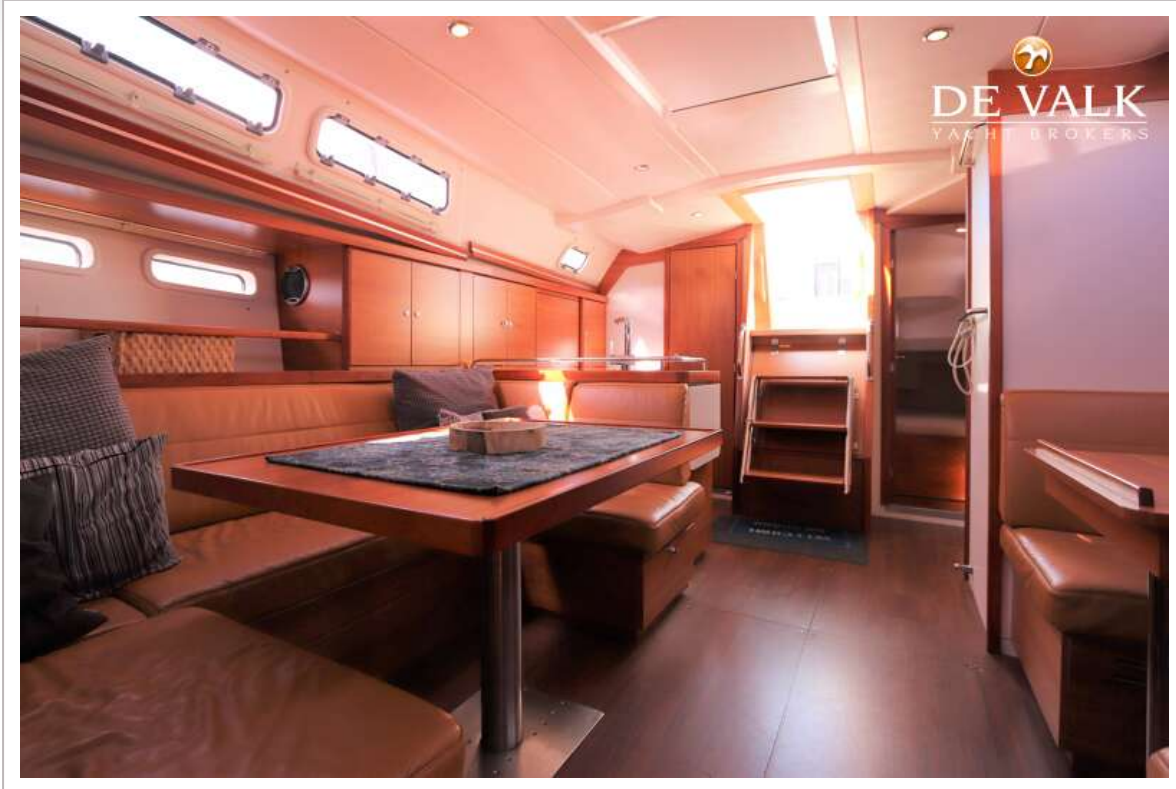
# HANSE 430



# HANSE 430



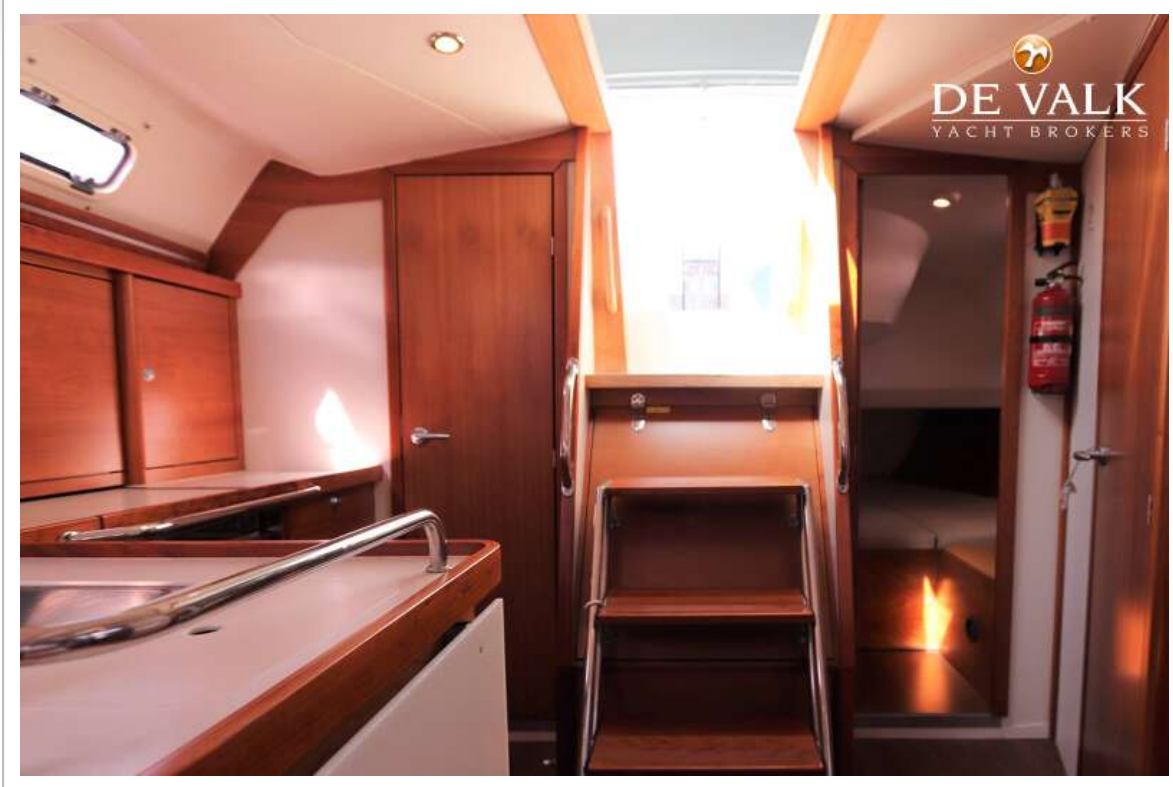
# HANSE 430



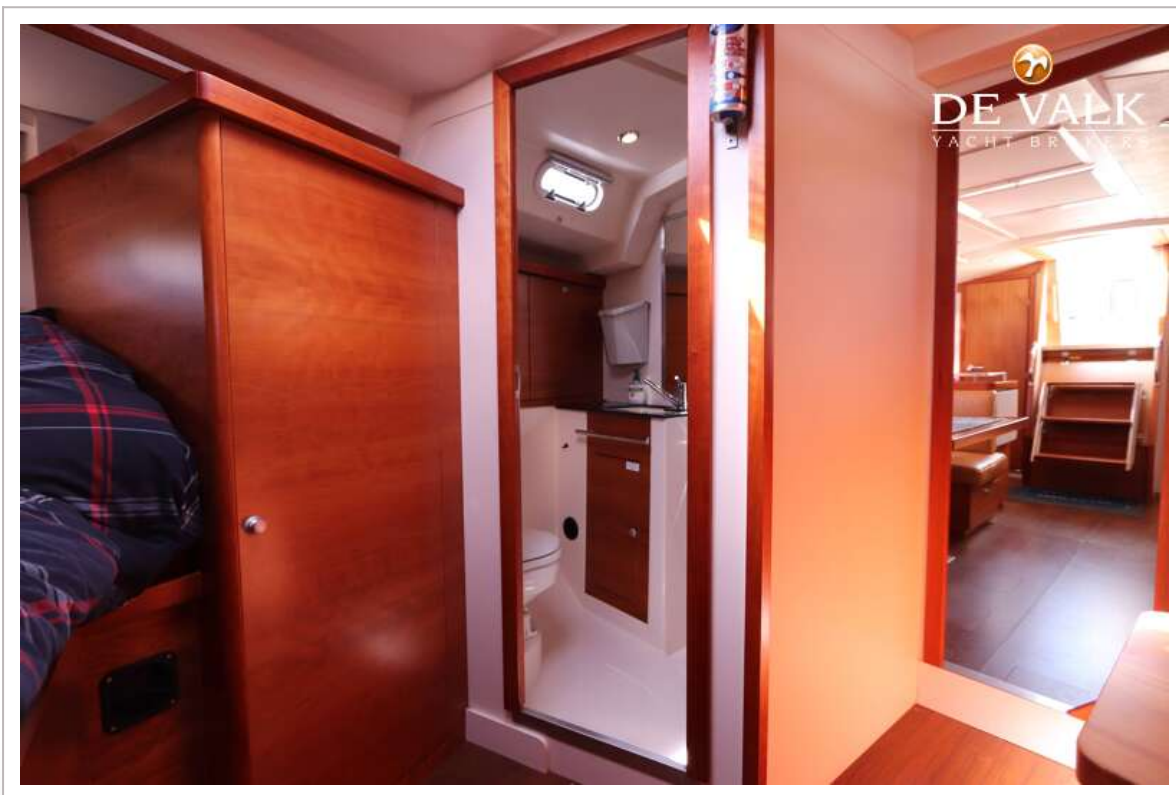
# HANSE 430



# HANSE 430

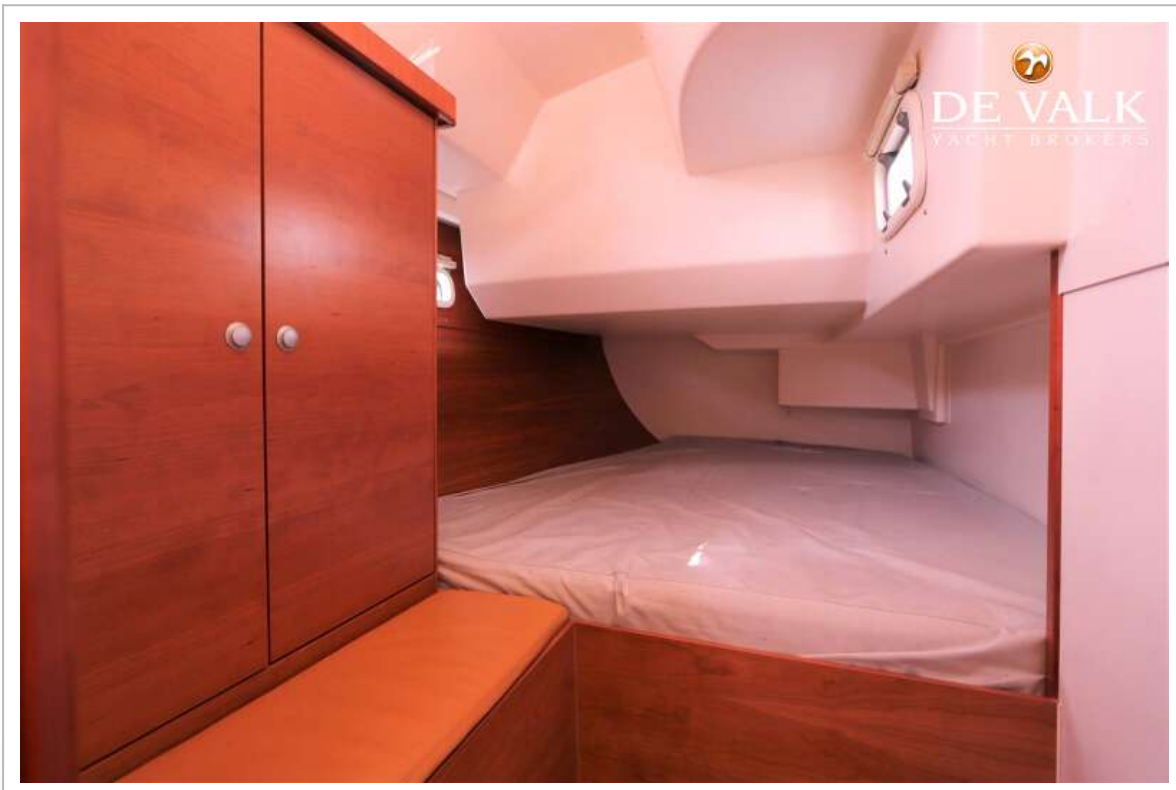
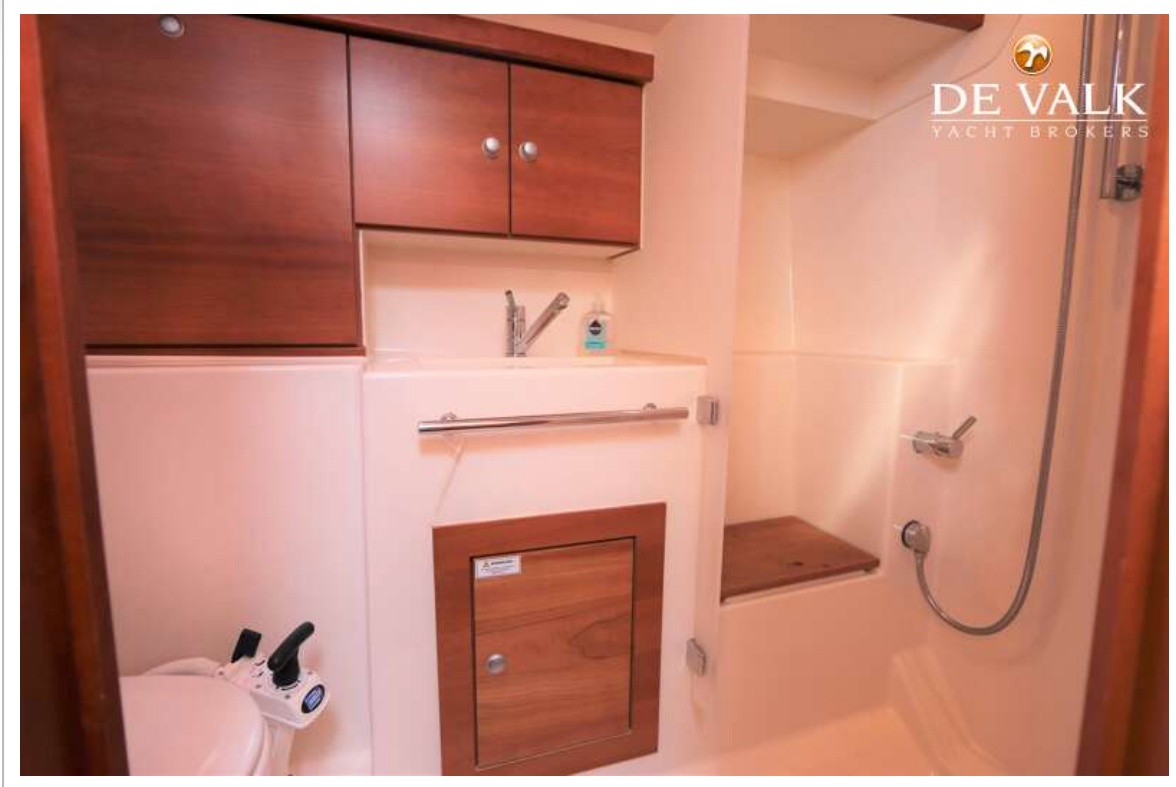


# HANSE 430

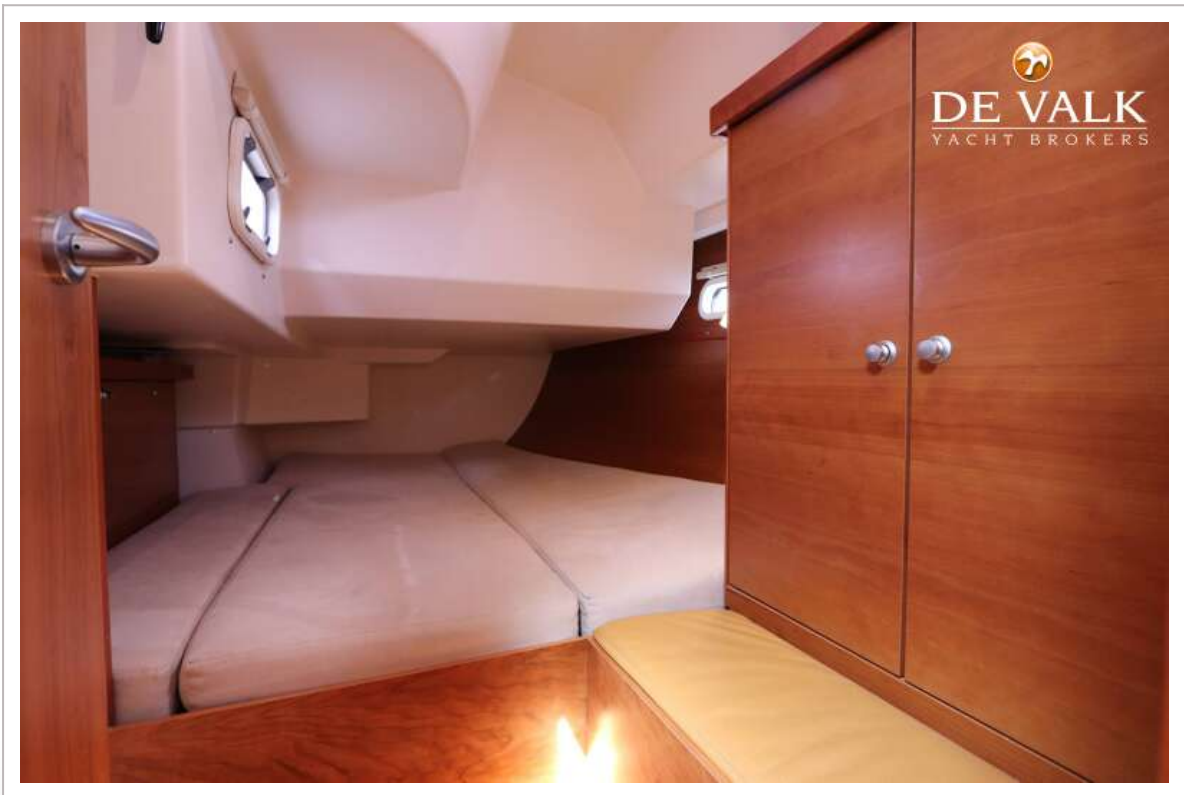
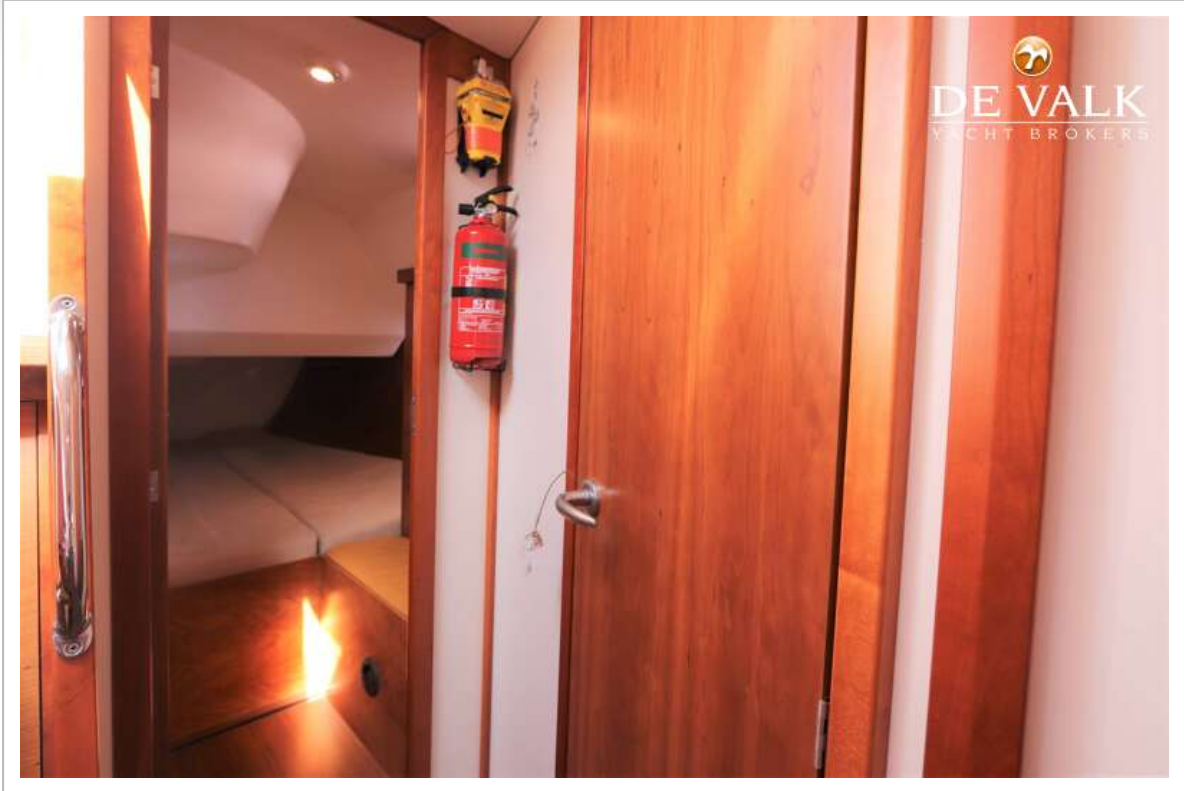




# HANSE 430



# HANSE 430



# HANSE 430

