



## CUSTOM BUILT MY TRAMP



# CUSTOM BUILT MY TRAMP

## BROKER'S COMMENTS

The boat was purchased by the current owners in 2013 and has been carefully refurbished and upgraded over the years, with total investments exceeding €500,000. Just last year, it underwent dry-dock maintenance and received significant improvements, including a new deck and antifouling, ensuring it remains in excellent condition. The boat is currently on dry dock on island Korcula.

*Filip Mimica*

## SPECIFICATIONS

<b>Dimensions</b>	24.00 x 6.45 x 1,80 / 2.10 (m)	<b>Builder</b>	
<b>Built</b>	2007	<b>Cabins</b>	4
<b>Material</b>	Steel	<b>Berths</b>	17
<b>Engine(s)</b>	2 x IVECO NEF 280 diesel	<b>Hp/Kw</b>	2 x 260.00 (hp), 191.36 (kw)
<b>Asking price</b>	€ 280.000 (VAT Paid)	<b>Lying</b>	Croatia

## CONTACT

<b>Sales office</b>	De Valk Dalmatia	<b>Telephone</b>	+385 914 567 834
<b>Address</b>	Ul. Velimira Skorpika 22000 Sibenik HR	<b>E-mail</b>	dalmatia@devalk.nl

## DISCLAIMER

These particulars are given in good faith as supplied but cannot be guaranteed.



# CUSTOM BUILT MY TRAMP

## GENERAL

Model	CUSTOM BUILT MY TRAMP
Type	motor yacht
LOA (m)	24,00
Beam (m)	6,45
Draft (m)	2,10
Draft min (m)	1,80
Headroom (m)	2,30
Year built	2007
Displacement (t)	70
Hull material	steel
Hull colour	White
Deck material	Flexiteek + teak wood on stern
Cockpit deck finish	Mahogany
Antifouling (year)	2025
Flybridge	yes
Fuel tank (litre)	3x1000L
Fuel tank 2 (litre)	3x1000L
Level indicator (fuel tank)	yes
Freshwater tank (litre)	4000L
Level indicator (freshwater)	yes
Blackwater tank (litre)	5000L
Level indicator (blackwater)	yes
Wheel steering	yes
Inside helm position	yes

## ACCOMMODATION

Cabins	4
Berths	17
Layout	4 cabins with 4 toilets
Saloon	yes



# CUSTOM BUILT MY TRAMP

Headroom saloon (m)	2,30m
Navigation center	yes
Dining room	yes
Convertible berth	In stern cabin
Sliding door to cockpit	yes
Galley	yes
Sink	yes
Cooker	MARENO
Oven	MARENO
Microwave	Inox
Fridge	2x two door fridges
Freezer	yes
Hot water system	yes
Water pressure system	yes
Dishwasher	AEG
Hot water tap	yes
Owners cabin	yes
Wardrobe	yes
Bathroom	yes
Toilet system	Salt water
Shower	yes
Guest cabin 1	yes
Wardrobe	yes
Bathroom	yes
Toilet system	Salt water
Guest cabin 2	yes
Wardrobe	yes
Bathroom	yes
Toilet system	Salt water
Shower	yes
Guest cabin 3	yes
Wardrobe	yes



Bathroom	yes
Toilet system	Salt water
Guest cabin 4	yes
Wardrobe	yes
Bathroom	yes
Toilet system	Salt water
Shower	yes

## MACHINERY

No of engines	2
Make	IVECO
Type	NEF 280
HP	260
kW	191.36
Fuel	diesel
Cruising speed (kn)	8
Consumption (l/hr)	20
Drive	shaft
Gearbox	ZF transmission, gearbox ratio 3:1
Bowthruster	Electrically controlled by joystick
Propeller blades	4 blades
Manual bilge pump	yes
Electric bilge pump	yes
Bilge alarm	yes
Generator	Power 13.5 kVA
Batteries	yes
Start battery	yes
Service battery	yes
Generator battery	yes
Bowthruster battery	yes
Battery charger	yes



Inverter	yes
Solar panel	12 solar panels (250 W each), total 3 kW (2 changers – 1.5kW/5k
Shorepower	yes

## NAVIGATION

Multi control display	Raymarine
Depth sounder	Raymarine
Log	Raymarine
VHF	Raymarine
Autopilot	Raymarine
Plotter	Raymarine
Camera	Camera system with a display and a recorder
Navigation lights	yes

## EQUIPMENT

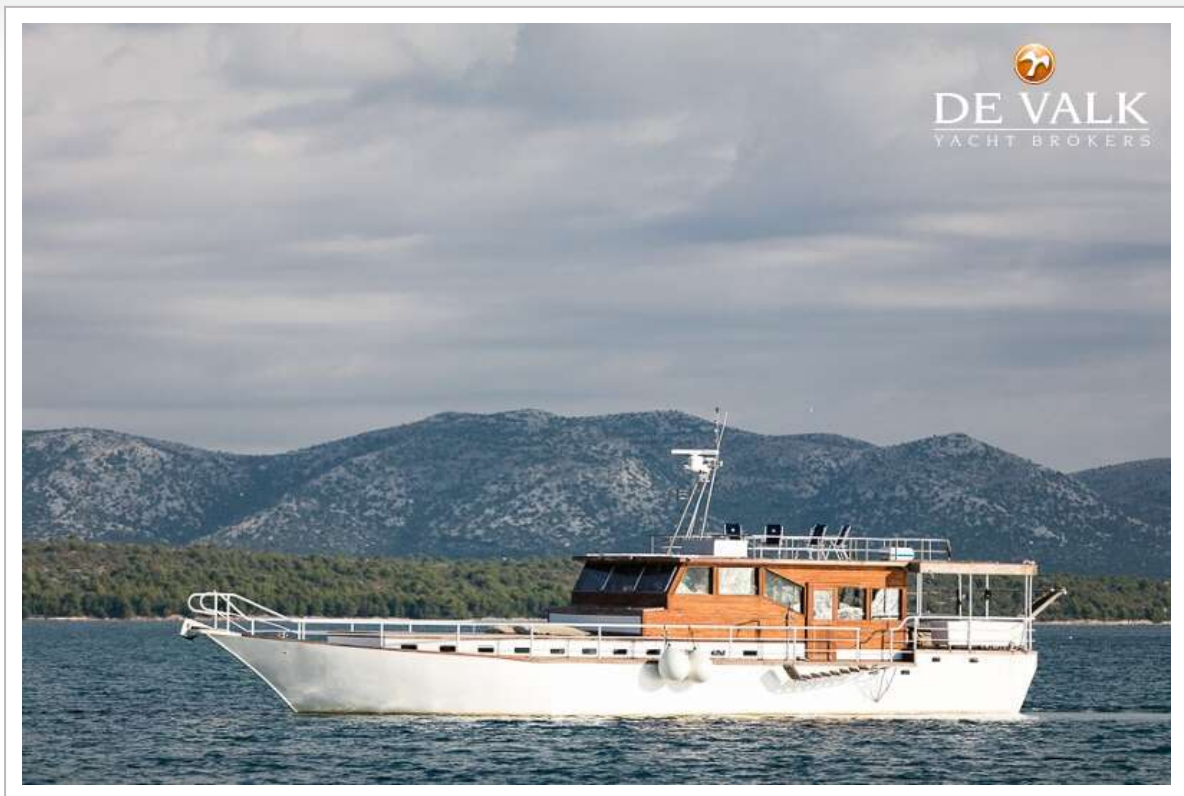
Fixed windscreen	yes
Cockpit table	yes
Boarding ladder	yes
Gangway	yes
Anchor	96 kg INOX, 100 m chain
Anchor chain	100 m chain
Chain counter	yes
Life raft	20x people



# CUSTOM BUILT MY TRAMP



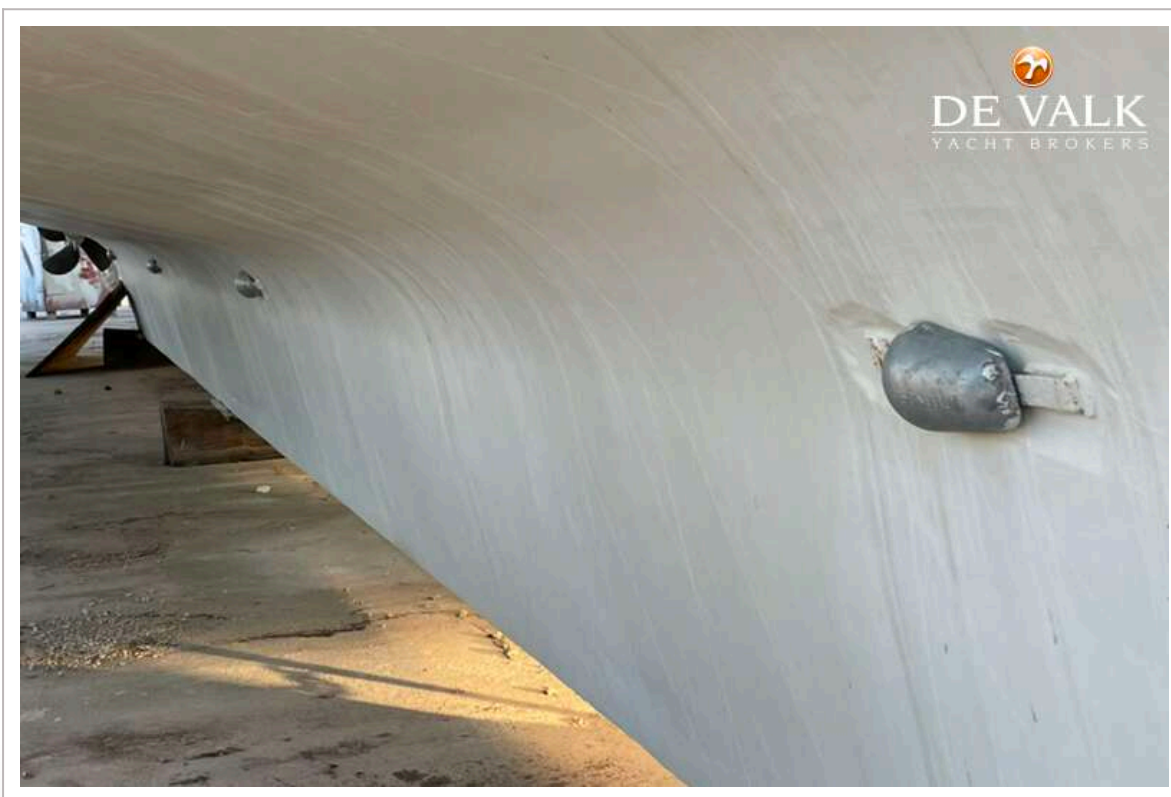
# CUSTOM BUILT MY TRAMP



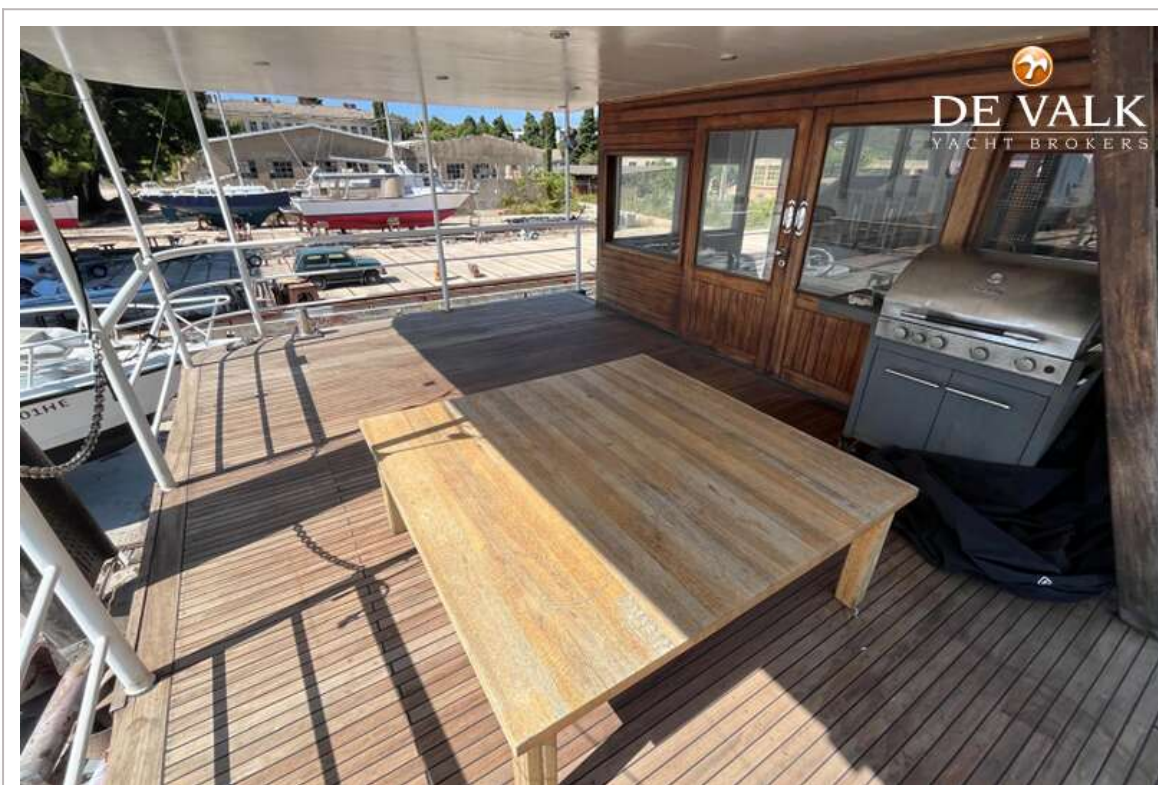
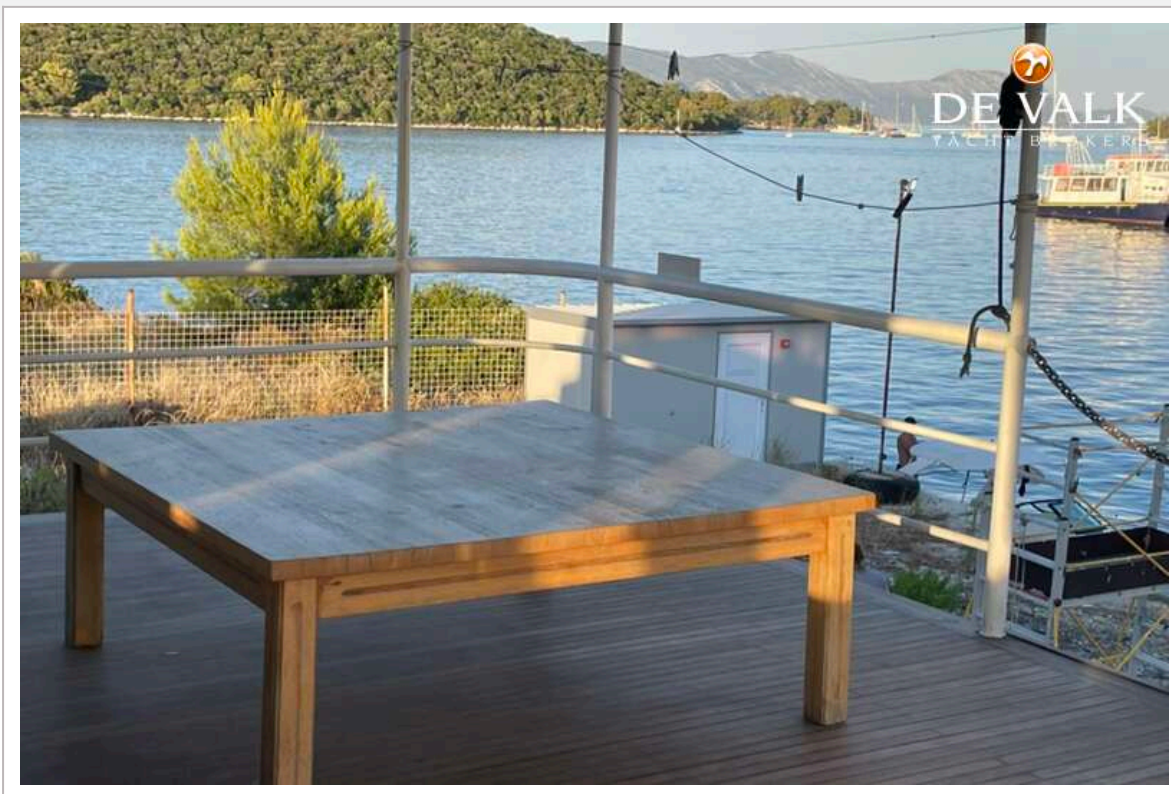
# CUSTOM BUILT MY TRAMP



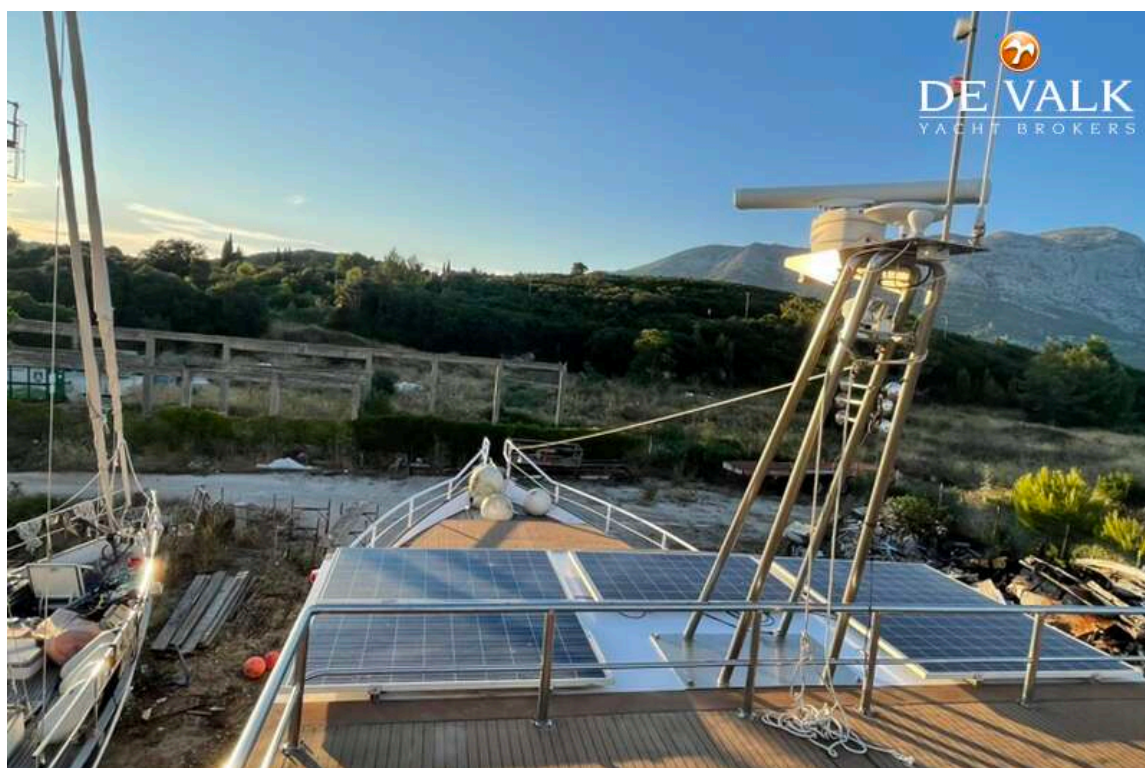
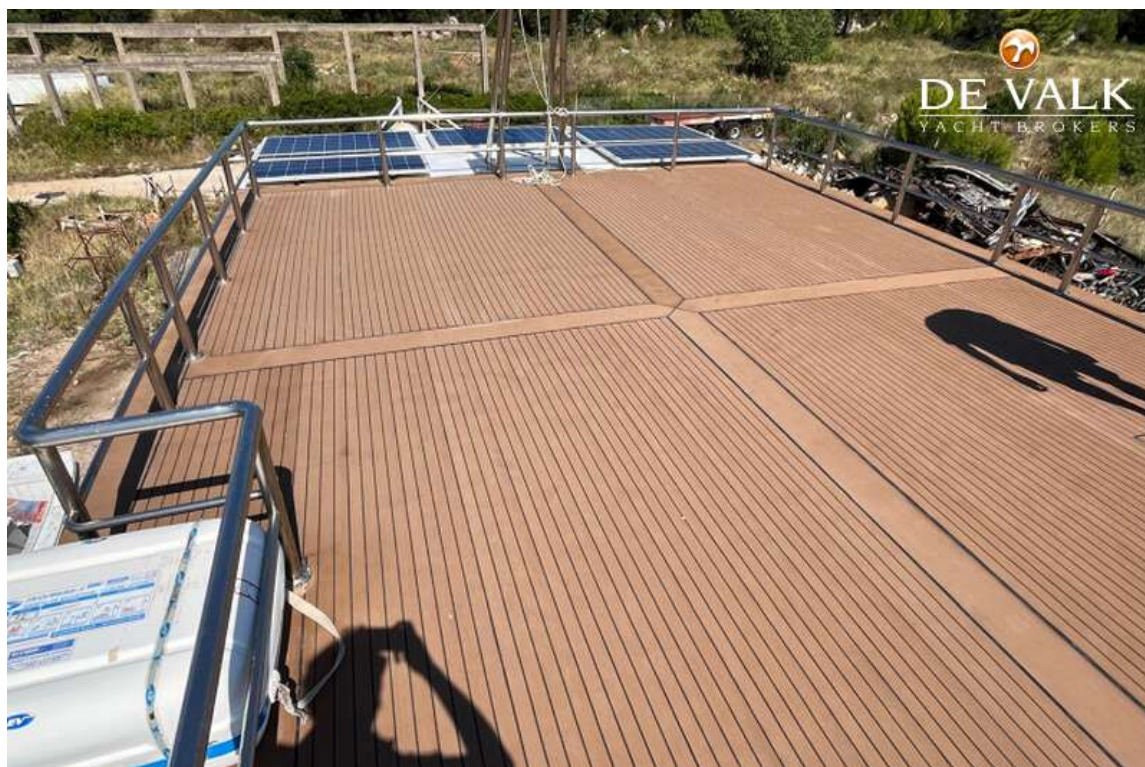
# CUSTOM BUILT MY TRAMP



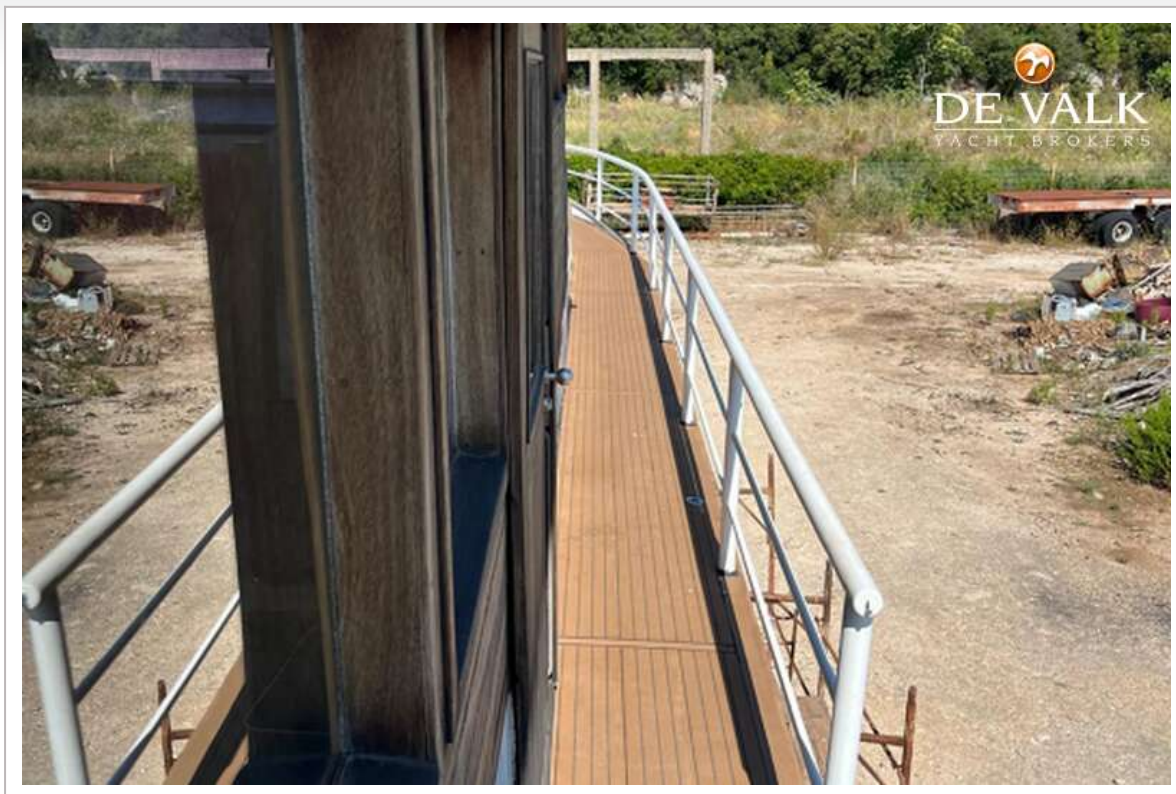
# CUSTOM BUILT MY TRAMP



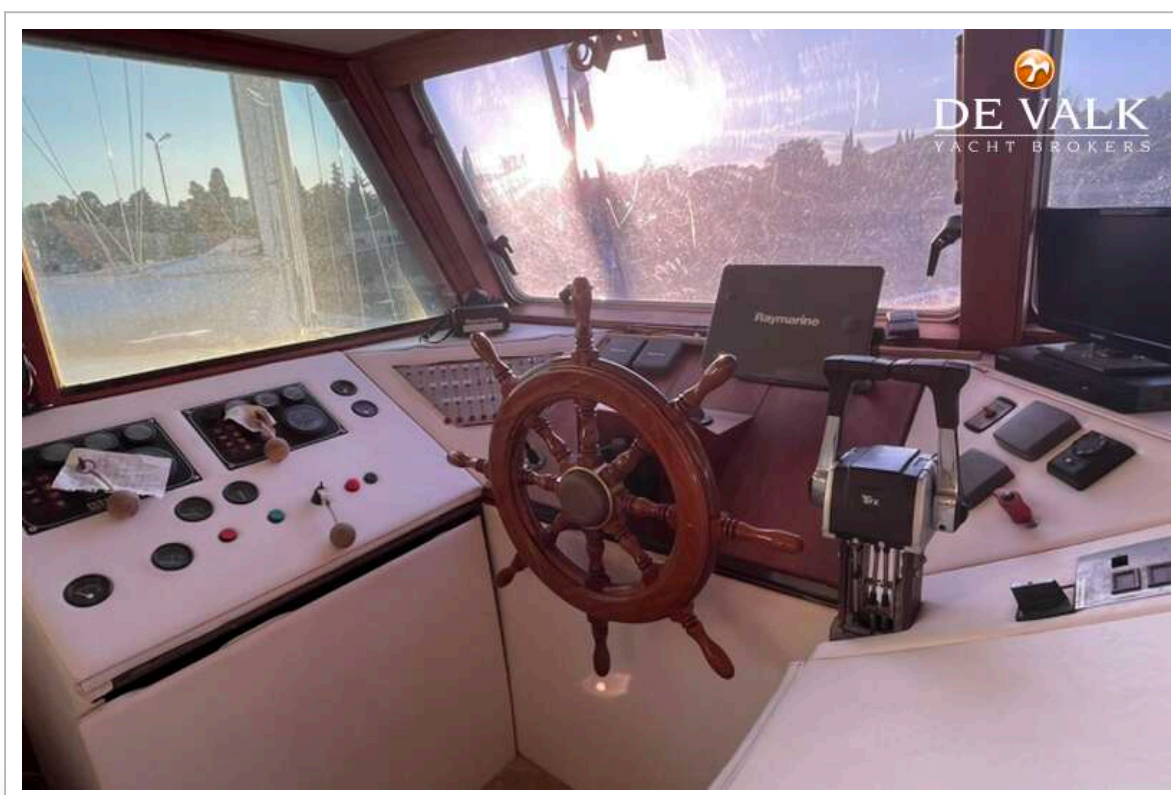
# CUSTOM BUILT MY TRAMP



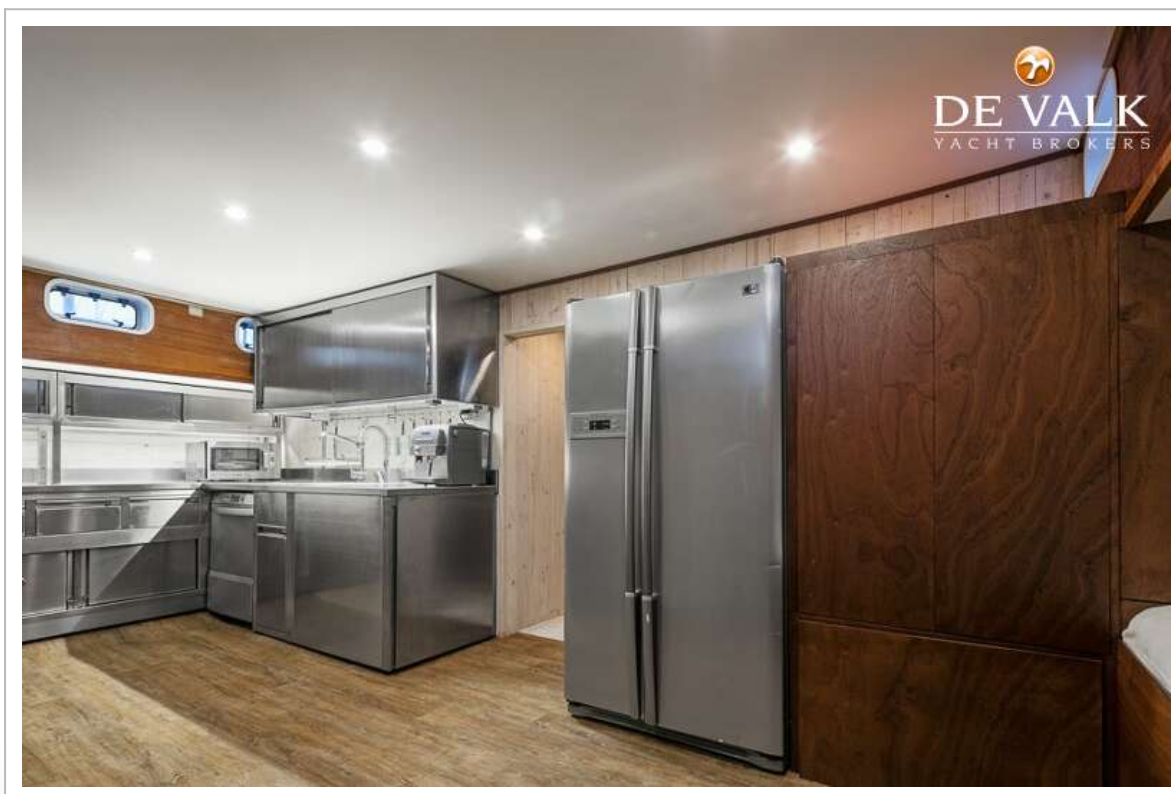
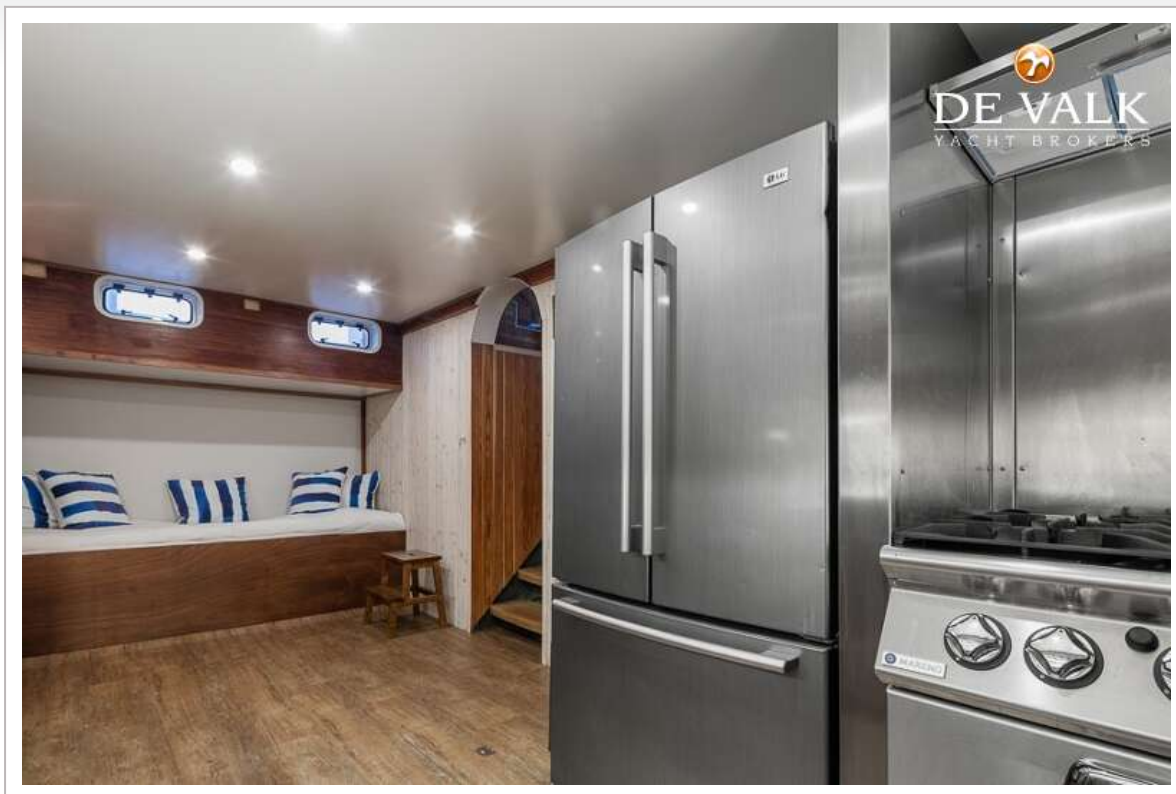
## CUSTOM BUILT MY TRAMP



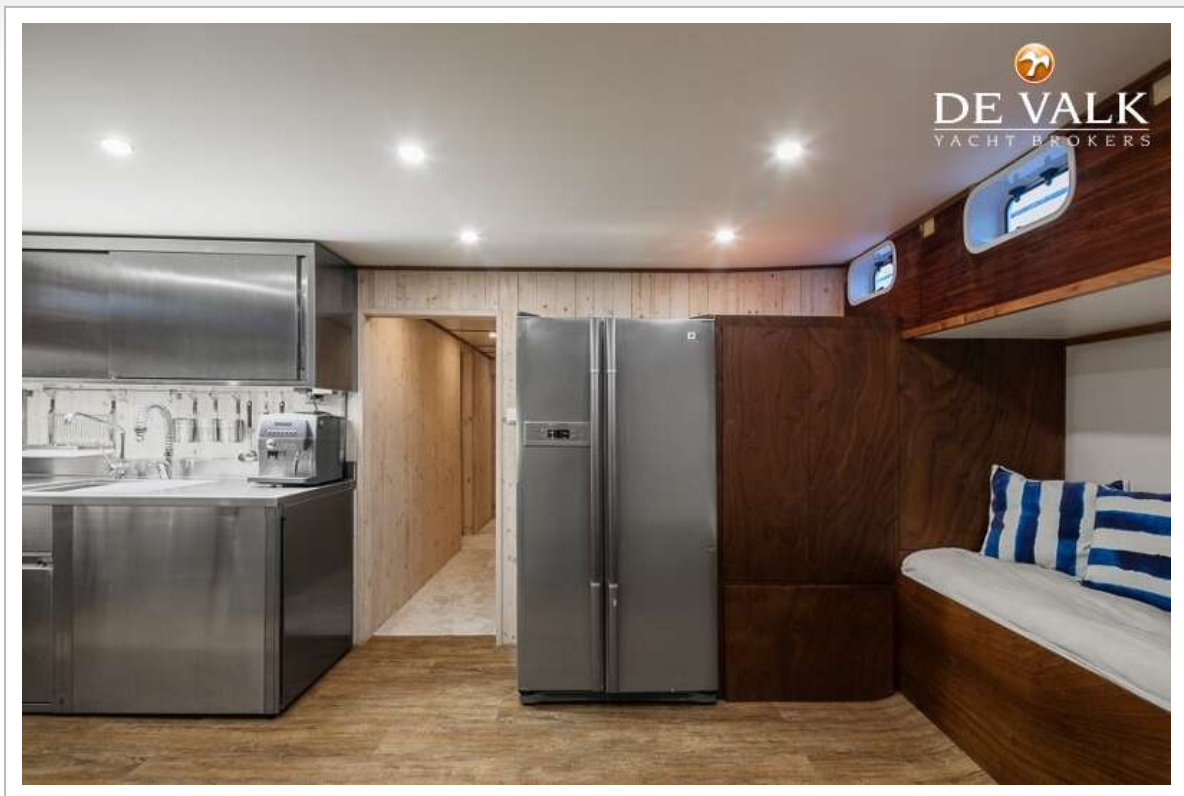
## CUSTOM BUILT MY TRAMP



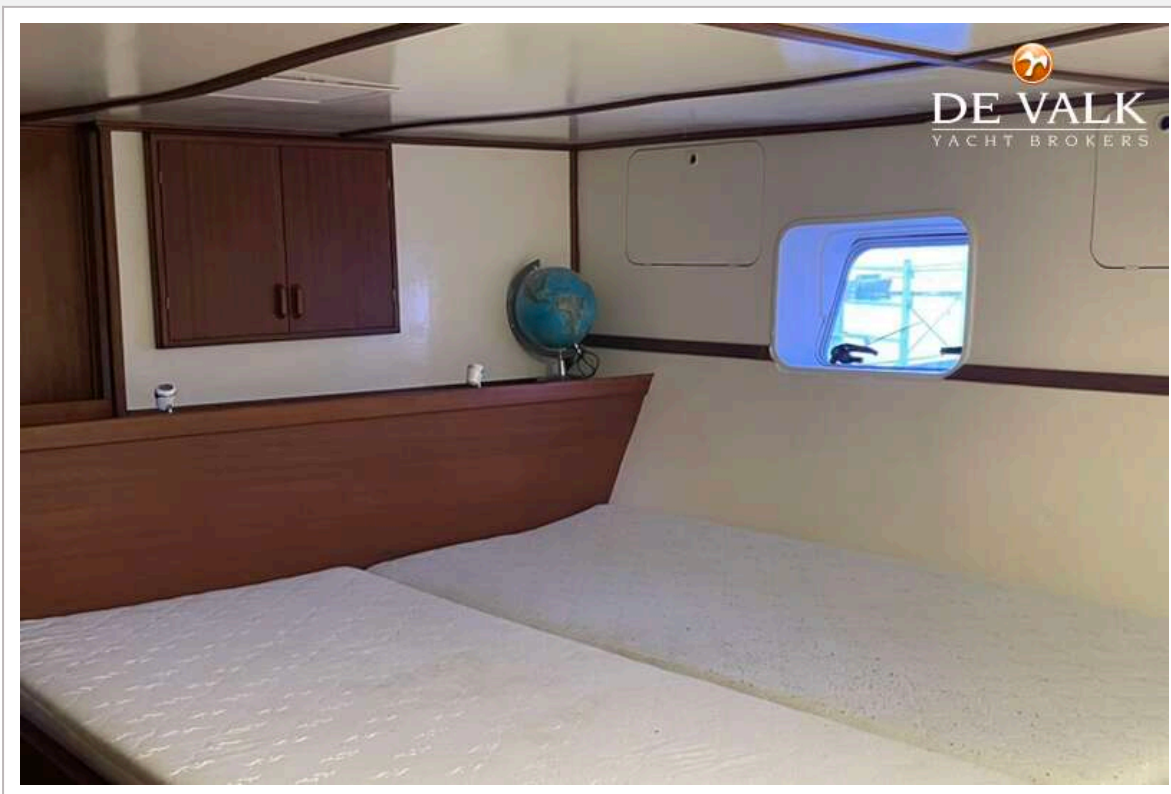
# CUSTOM BUILT MY TRAMP



# CUSTOM BUILT MY TRAMP



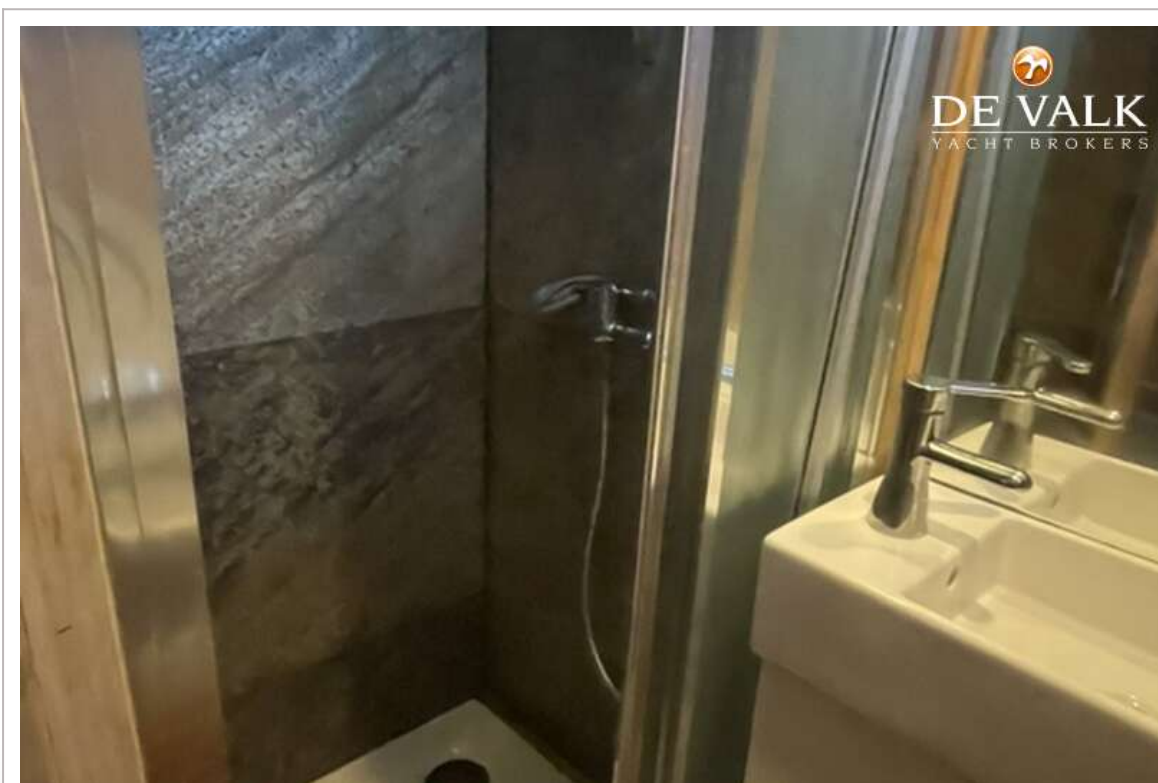
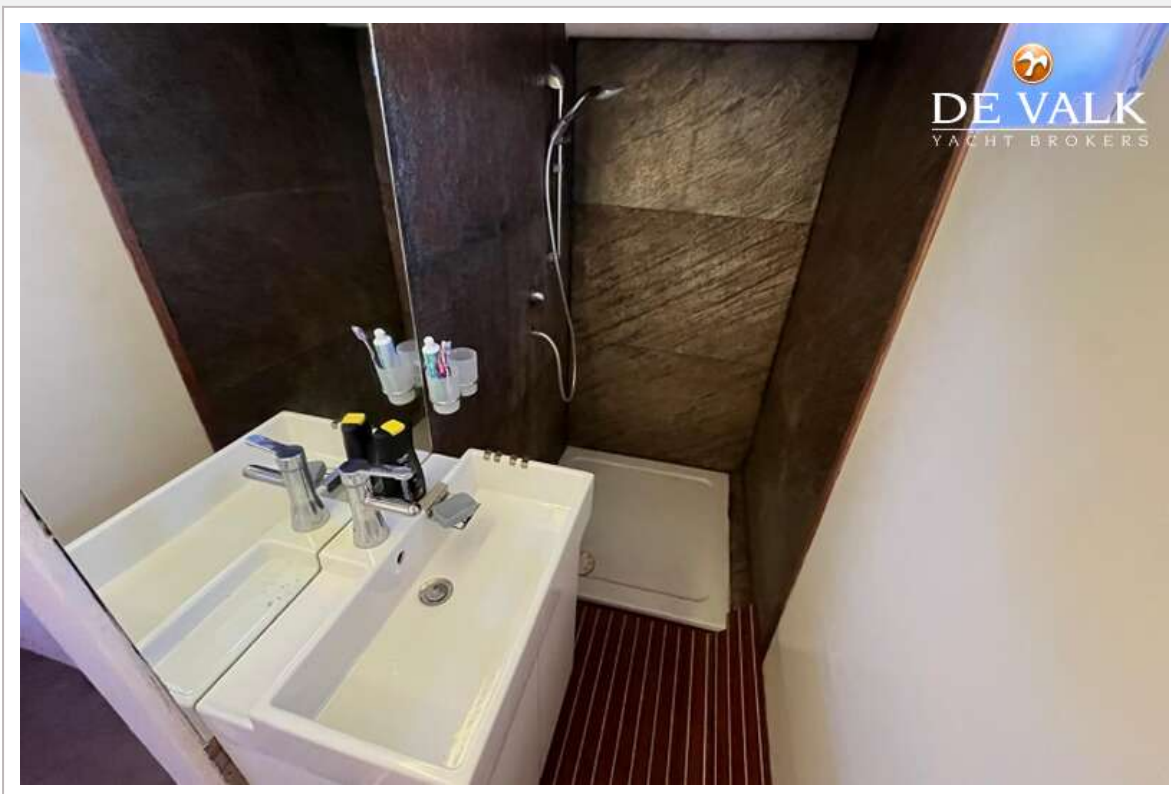
## CUSTOM BUILT MY TRAMP



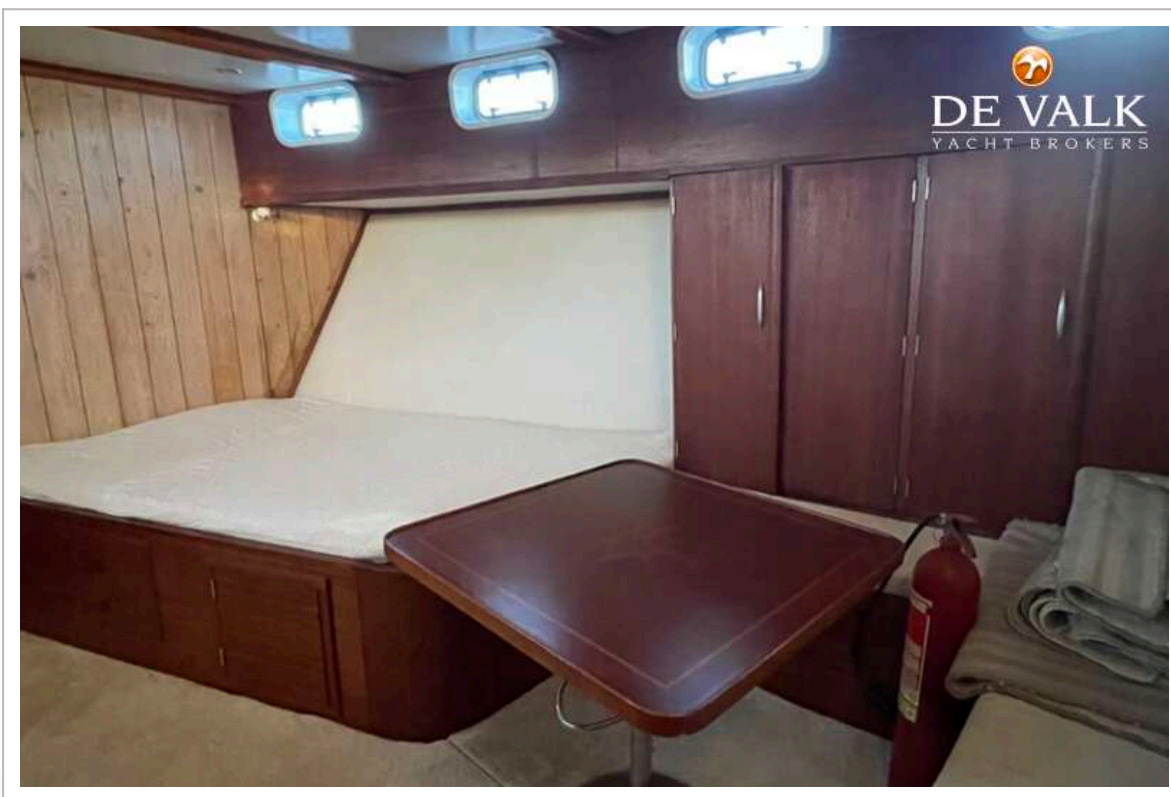
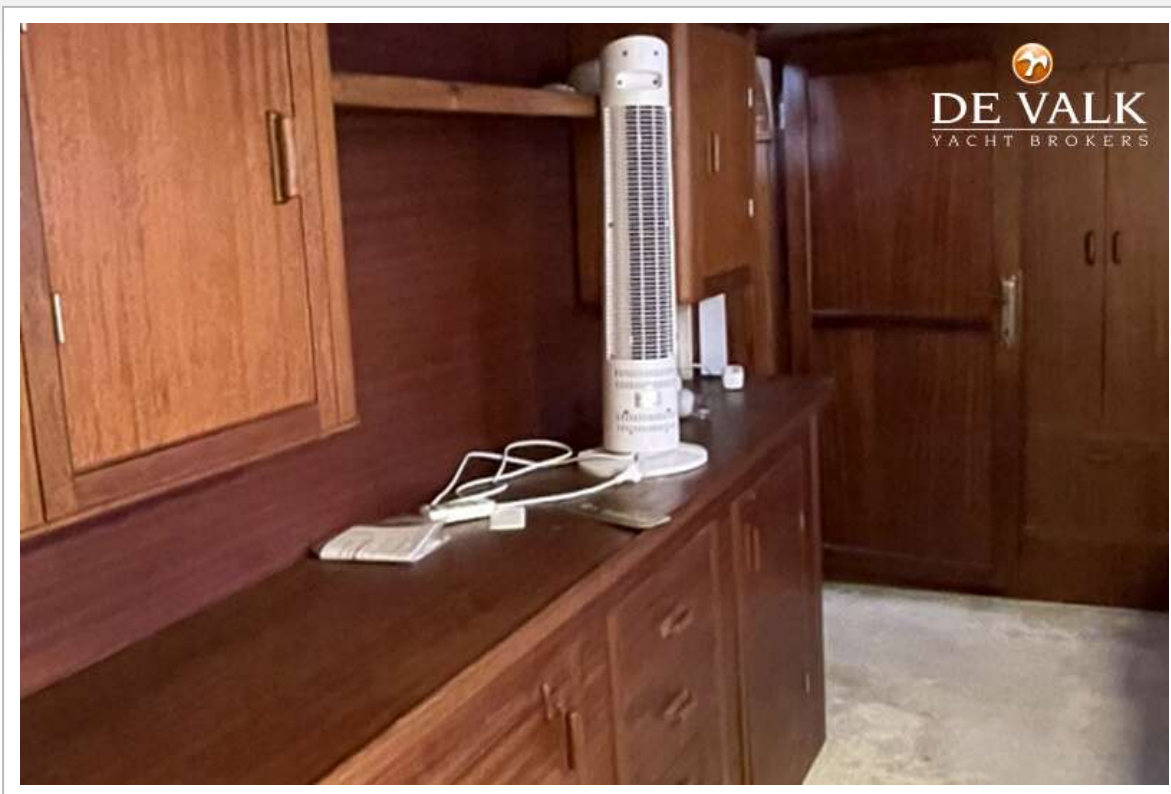
## CUSTOM BUILT MY TRAMP



## CUSTOM BUILT MY TRAMP



## CUSTOM BUILT MY TRAMP



## CUSTOM BUILT MY TRAMP

