



DE VALK
YACHT BROKERS



TRADEWIND ATOLL 25



DE VALK
YACHT BROKERS

TRADEWIND ATOLL 25

BROKER'S COMMENTS

What a beauty of a boat ! The Atoll 25 is very solidly constructed and has, surprisingly a lot of accomodation and space for her length / size. It takes very little wind to get her going, and she'll stand up to a good blow longer than her crew can. In addition, this Tradewind is a joy to look at. Come over to our sales marina to admire this ocean going modern classic.

Reinier van der Wolf

SPECIFICATIONS

Dimensions	7.62 x 3.00 x 1.25 (m)	Builder	Lion Classic Boats, Walsoorden
Built	2006	Cabins	1
Material	GRP	Berths	4
Engine(s)	1 x Yanmar 2GM20 diesel	Hp/Kw	16.00 (hp), 11.78 (kw)
Asking price	sold (VAT)	Lying	at sales office

CONTACT

Sales office	De Valk Monnickendam B.V.	Telephone	+31 (0)299 65 63 50
Address	Hoogedijk 6 1145 PM Katwoude NL	E-mail	monnickendam@devalk.nl

DISCLAIMER

These particulars are given in good faith as supplied but cannot be guaranteed.



GENERAL

Model	TRADEWIND ATOLL 25
Type	sailing yacht
LOA (m)	7,62
LWL (m)	6,40
Beam (m)	3,00
Draft (m)	1,25
Headroom (m)	1,89
Year built	2006
Builder	Lion Classic Boats, Walsoorden
Country	The Netherlands
Designer	John Rock
Displacement (t)	4,6
Ballast (tonnes)	lead in GRP 2
CE norm	A
Hull material	GRP
Hull colour	black
Hull shape	multi hard chine
Keel type	long keel
Superstructure material	GRP
Rubbing strake	wood
Deck material	GRP
Deck finish	TBS non-skid profile mats
Superstructure deck finish	TBS non-skid profile mats
Cockpit deck finish	teak
Window frame	copper
Window material	tempered glass
Deckhatch	2 x large - 1 x small
Portholes	copper
Mast can be lowered	manual
Fuel tank (litre)	stainless steel 60 L.



Level indicator (fuel tank)	gauge glass
Freshwater tank (litre)	stainless steel 140 L.
Level indicator (freshwater)	yes
Blackwater tank (litre)	yes
Tiller	yes
More info on hull	Hull and deck made of polyester, hand-built. Hull is full glass, deck with balsa sandwich core. Hanging rudder with small balance section. Laminated long keel with lead ballast "packed" in polyester resin. Hull-deck connection by flange and laminated. Laminated bulkheads of 12 mm plywood, 2 stringers of solid glass per side. Interior laminated into the hull and finished with teak. Stainless steel water tank in the aft bilge, stainless steel diesel tank in the port bilge.

ACCOMMODATION

Cabins	1
Berths	4
Interior	teak
Floor	teak
Headroom saloon (m)	1,85 / 1,89 cm
Heating	Taylors - model 79KB
Chart table	yes
Dinette	with foldable panels
Convertible berth	at starboard - 2,37 x 0,51 and at portside 1,78 x 0,51 cm
Galley	at portside
Sink	stainless steel
Cooker	+ oven - model Taylors 029
Fridge	Waeco
Water pressure system	manual
Manual and/or foot pump	= footpump
Owners cabin	v-bed
Bed length (m)	1,80 X 1,40 / 0,35 cm
Toilet	yes



Toilet system	manual
Wardrobe	hanging and shelves
Extra info	Lots of storage space throughout the boat

MACHINERY

No of engines	1
Make	Yanmar
Type	2GM20
HP	16
kW	11.78
Fuel	diesel
Year installed	2006
Maximum speed (kn)	6
Cruising speed (kn)	5
Engine hours	2.021
Engine cooling system	freshwater heat exchanger
Drive	shaft
Engine controls	bowden cable
Gearbox	mechanical
Propeller type	feathering - Max prop
Propeller blades	3
Propeller shaft material	stainless steel
Manual bilge pump	yes
Electric bilge pump	yes
Electrical installation	12V / 220V
Start battery	Vetus SMF Marine 12V / 70Ah
Service battery	VMF Sportline 12V / 120Ah
Battery charger	VMF 12V/12A + Yamaha YEC-9
Solar panel	+ Victron Energy Blue Solar 12/24V - 16A
Shorepower	with cable



Extra info

Engine serviced, new impellor waterpump end of the 2021 season. Not many hours sailed since.

NAVIGATION

Compass

Plastimo Contest

Multi control display

Garmin GNX - depth, speed, wind and 50-plus marine and boat parameters.

Windset

Garmin GNX - 2 data fields and a digital wind rose simultaneously display true and apparent wind data, Steer Pilot, boat speed and more

Fish finder

Humminbird PiranhaMax 4

VHF

Simrad GPS-72 - ATIS / DSC

Autopilot

Simrad RD68

GPS

Garmin GPS72

Navigation lights

yes

EQUIPMENT

Sprayhood

yes

Cockpit cover

yes

Boarding ladder

stainless steel

Anchor

Plastimo Plough 9K

Anchor chain

yes

Deck wash

yes

Sea railing

yes

Grab rail (superstructure)

teak

Radar reflector

yes

Fenders

yes

Mooring lines

yes

Radio

Clarion

Speakers in salon

2 x Clarion

Clock - barometer

+ temperature / humidity - E.S. Sørensen



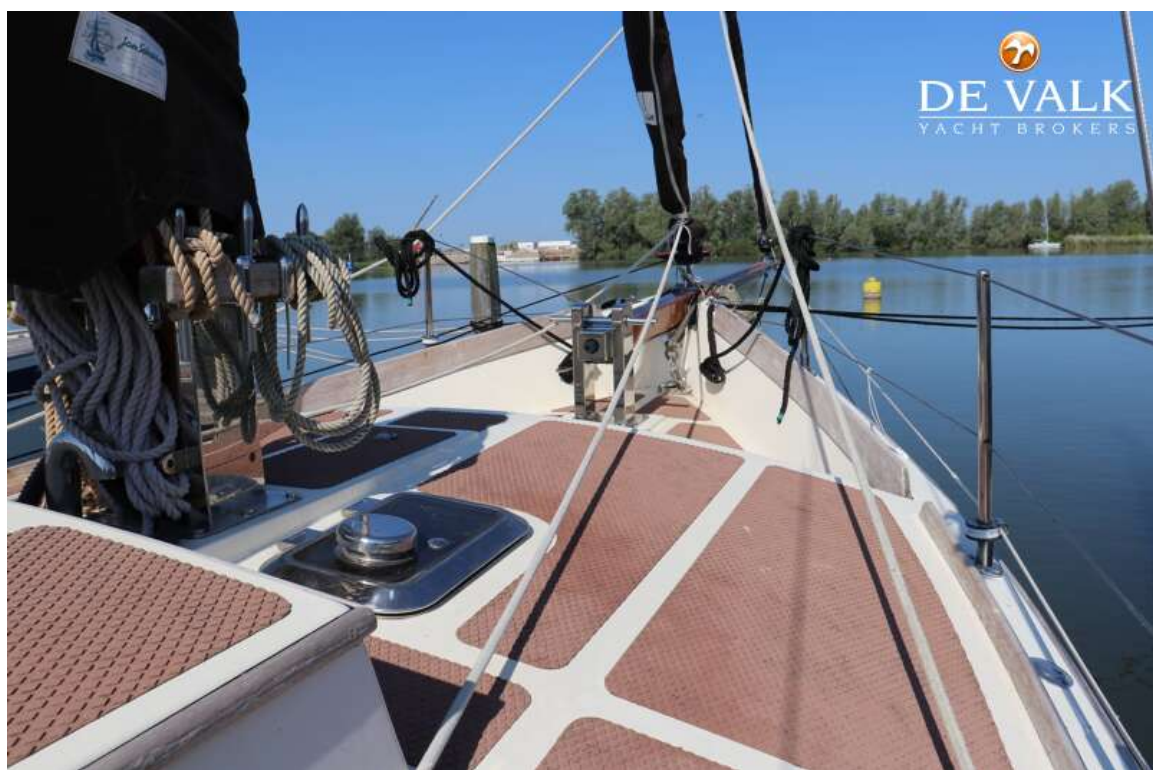
RIGGING

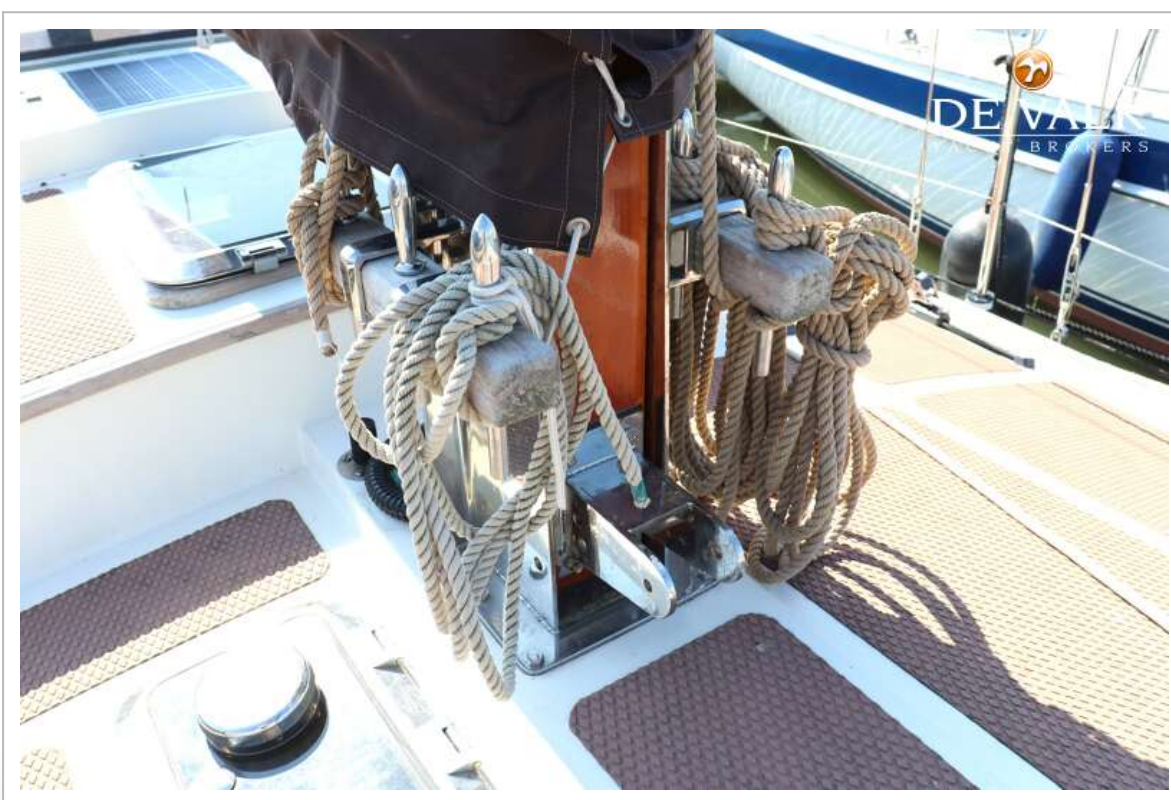
Rigging	gaff-rig
Standing rigging	wire
Material mast	wood
Mast lowering system	yes
Mainsail	yes
Mainsail cover	yes
Topsail	yes
Jib I	yes
Jib II	yes
Booster	yes
Stormjib	yes
Genoa sheetwinches	Antal W16
Extra info	Harken furling system for both front sails
Extra info	Mast, boom, bowsprit new varnished in 2023





TRADEWIND ATOLL 25





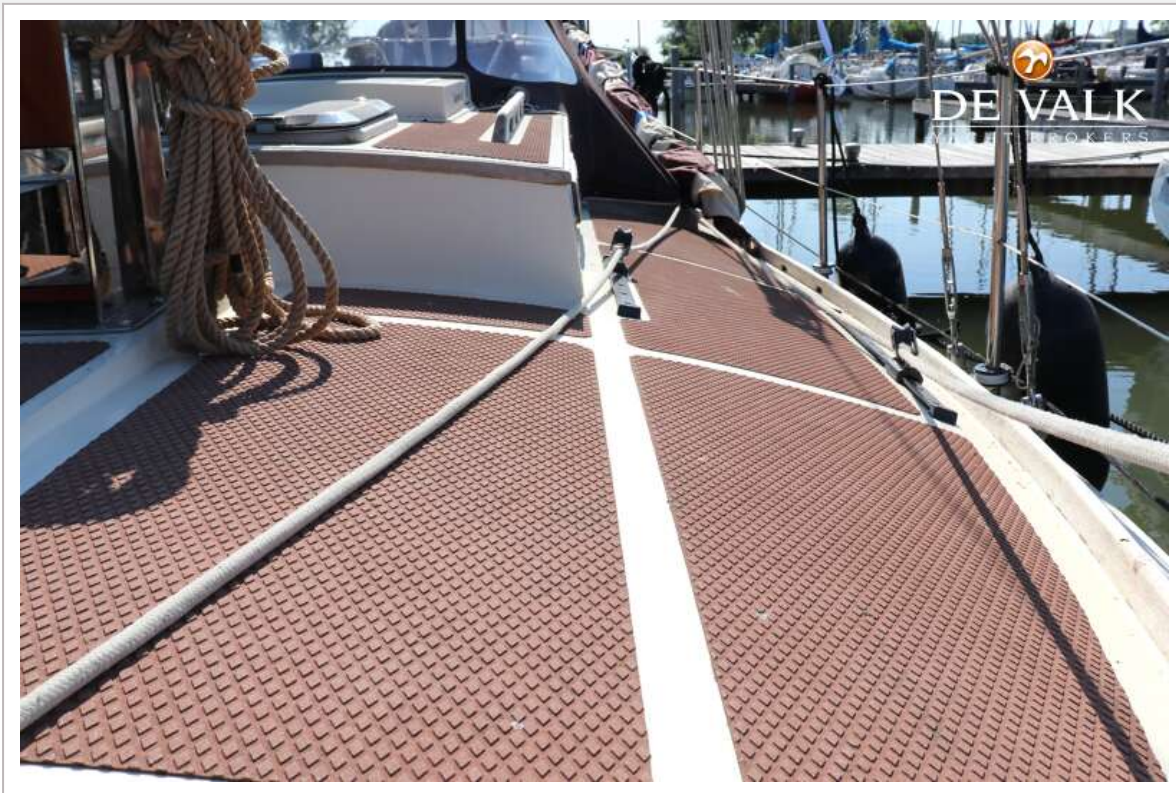
TRADEWIND ATOLL 25



TRADEWIND ATOLL 25



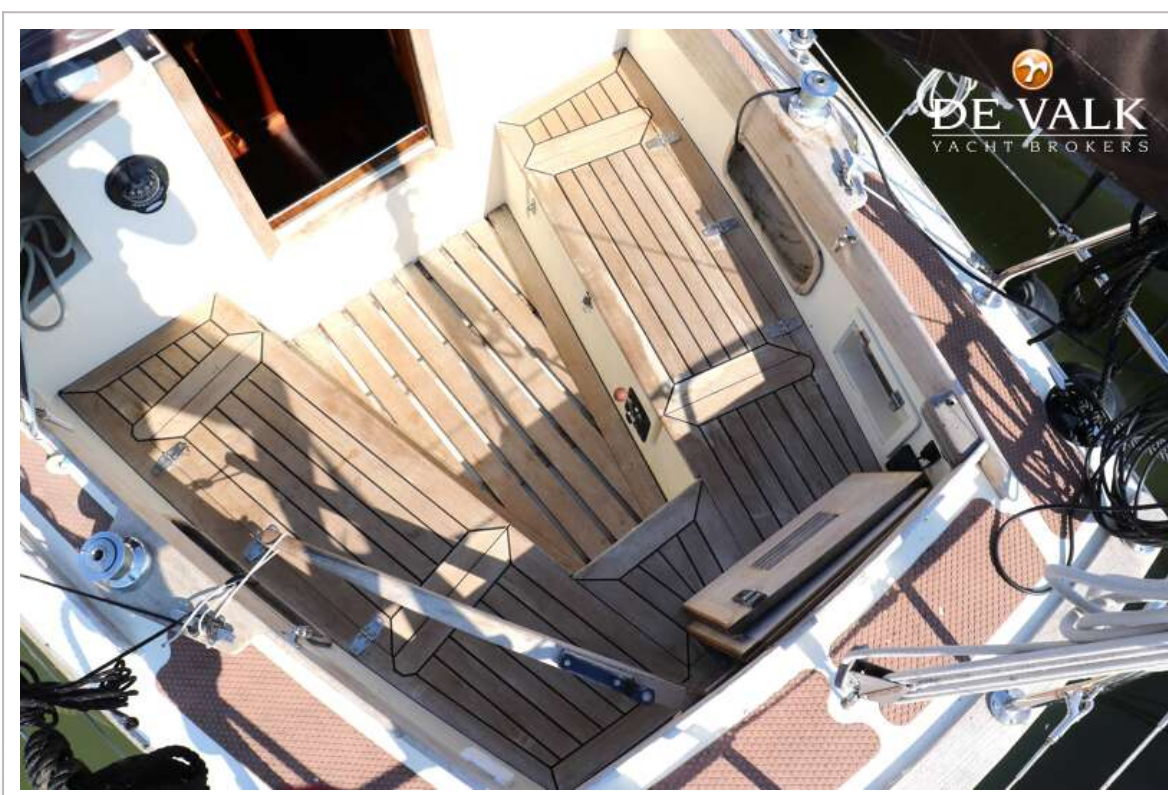
TRADEWIND ATOLL 25



TRADEWIND ATOLL 25



TRADEWIND ATOLL 25



TRADEWIND ATOLL 25



TRADEWIND ATOLL 25

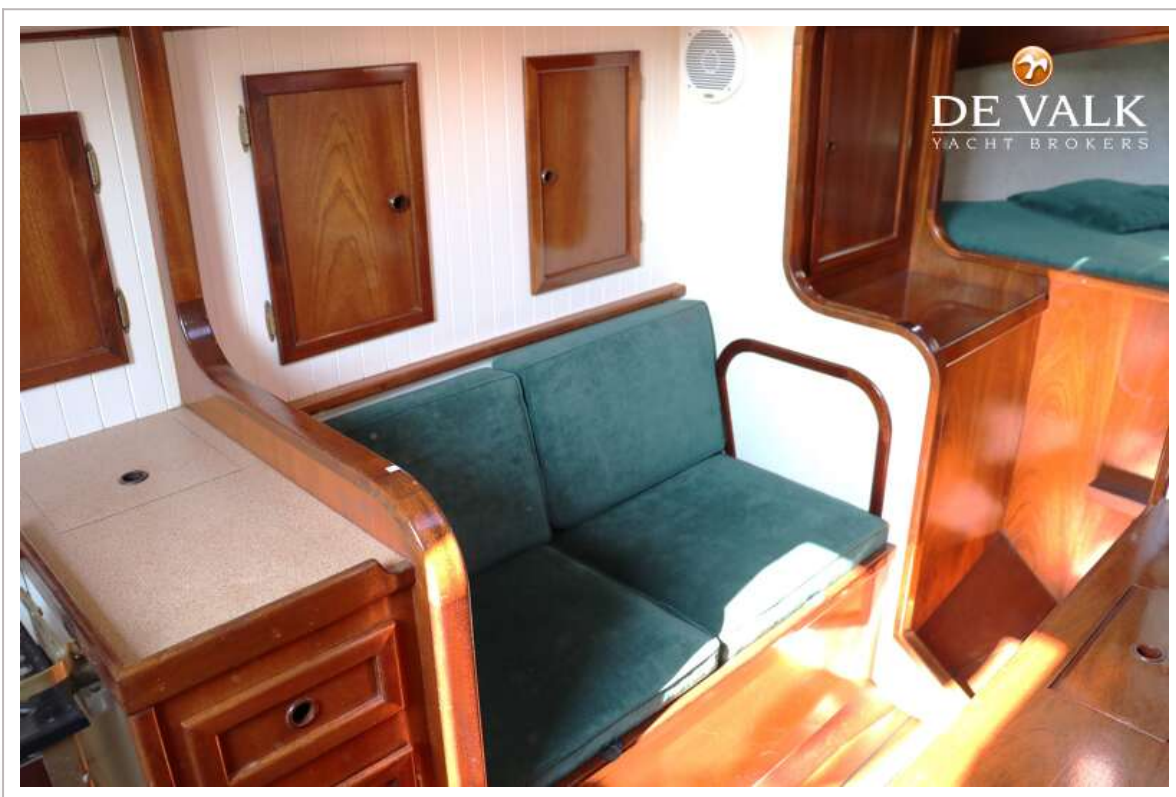


TRADEWIND ATOLL 25

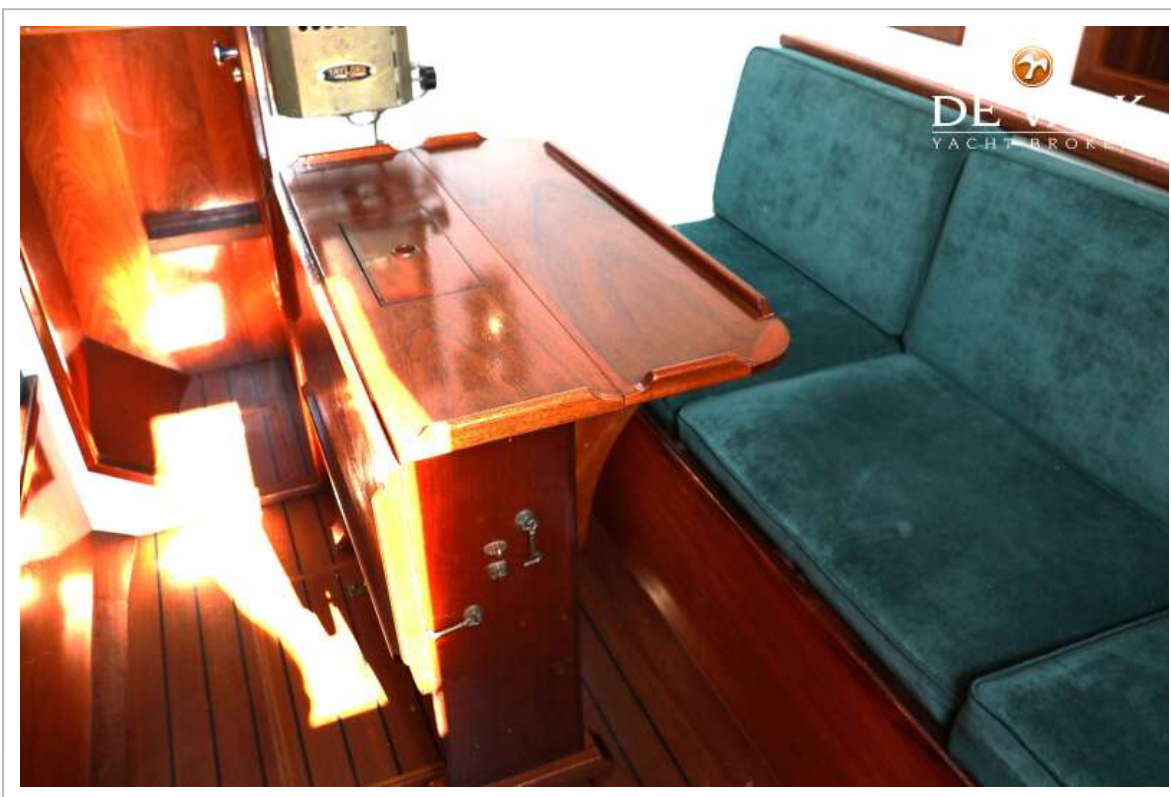


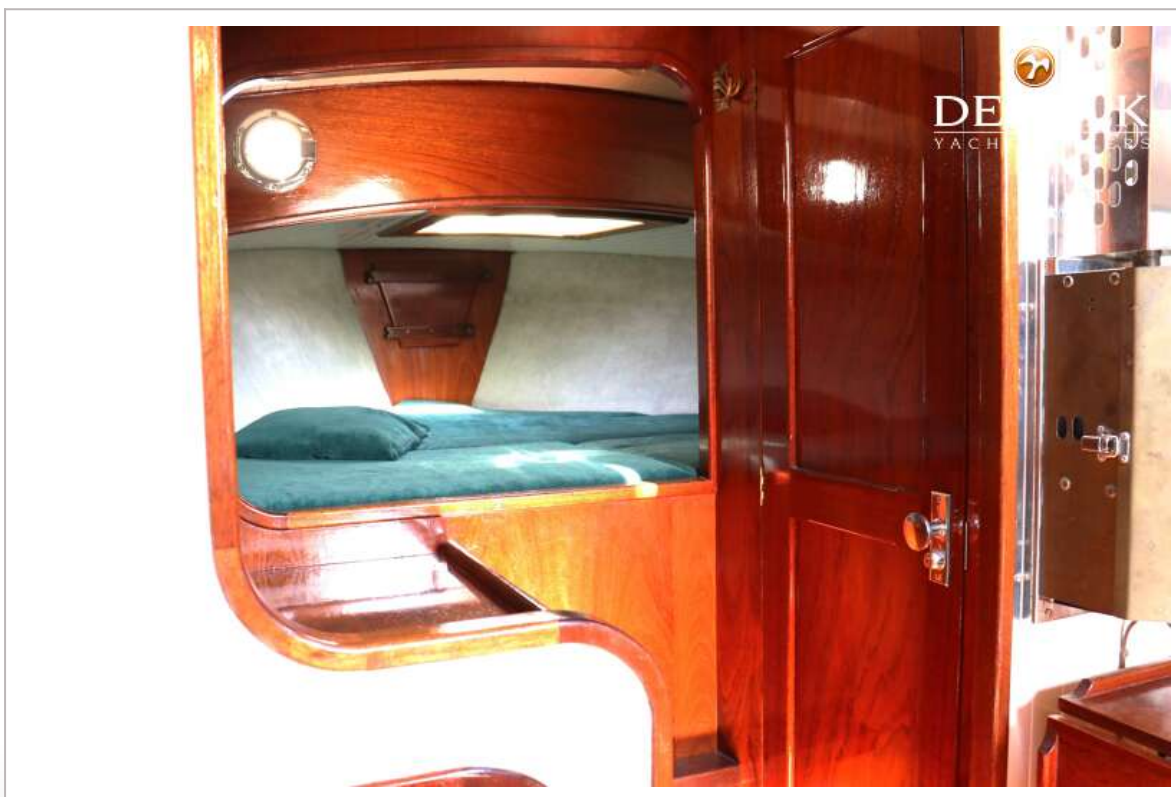
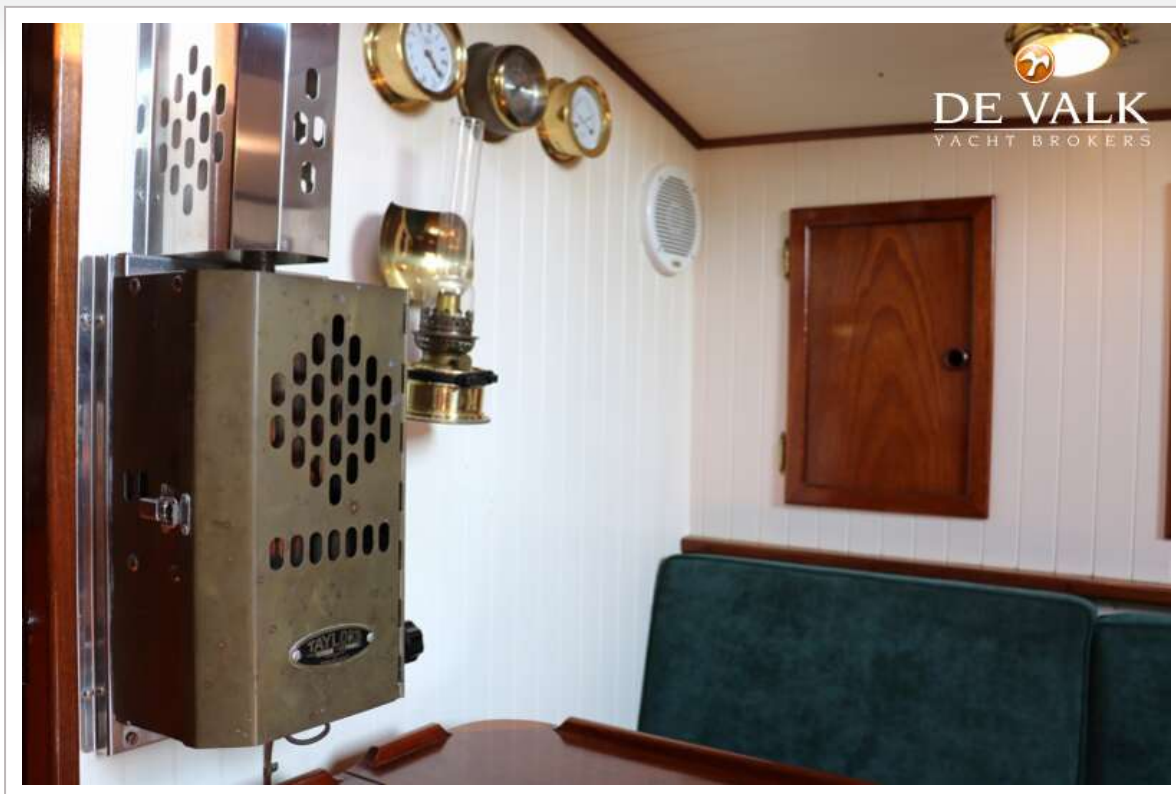
TRADEWIND ATOLL 25

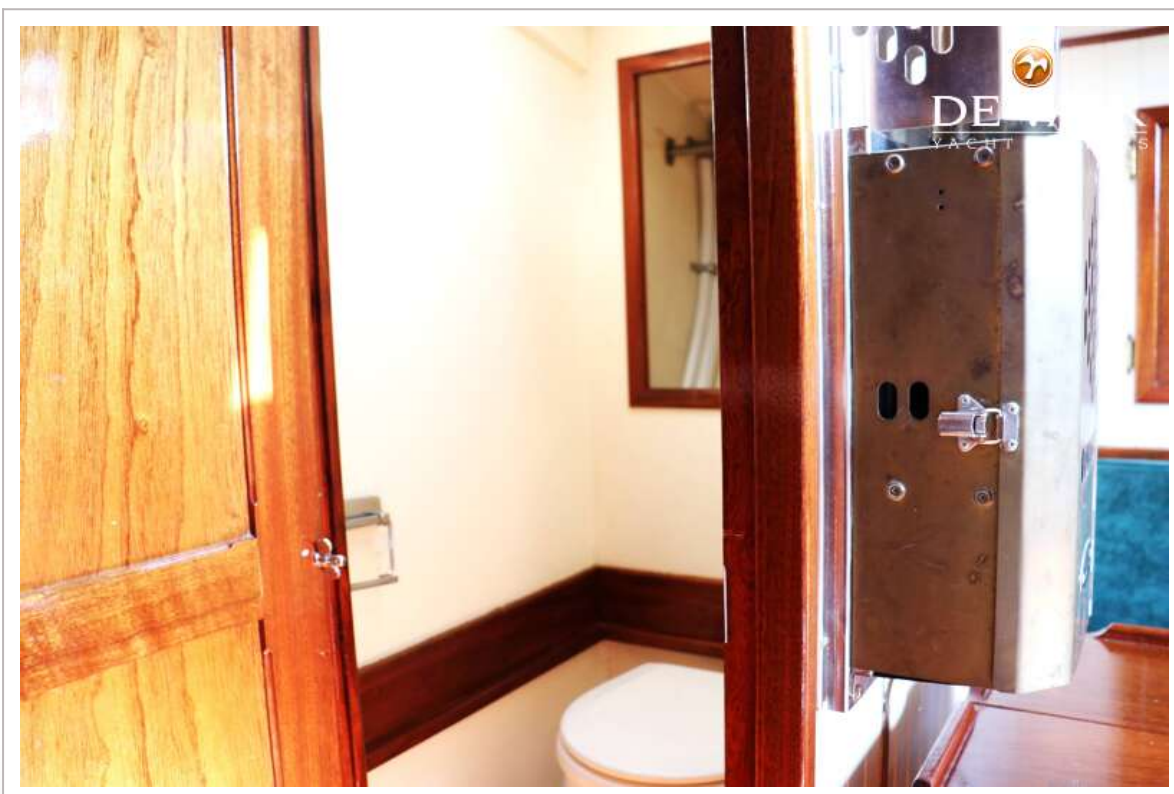


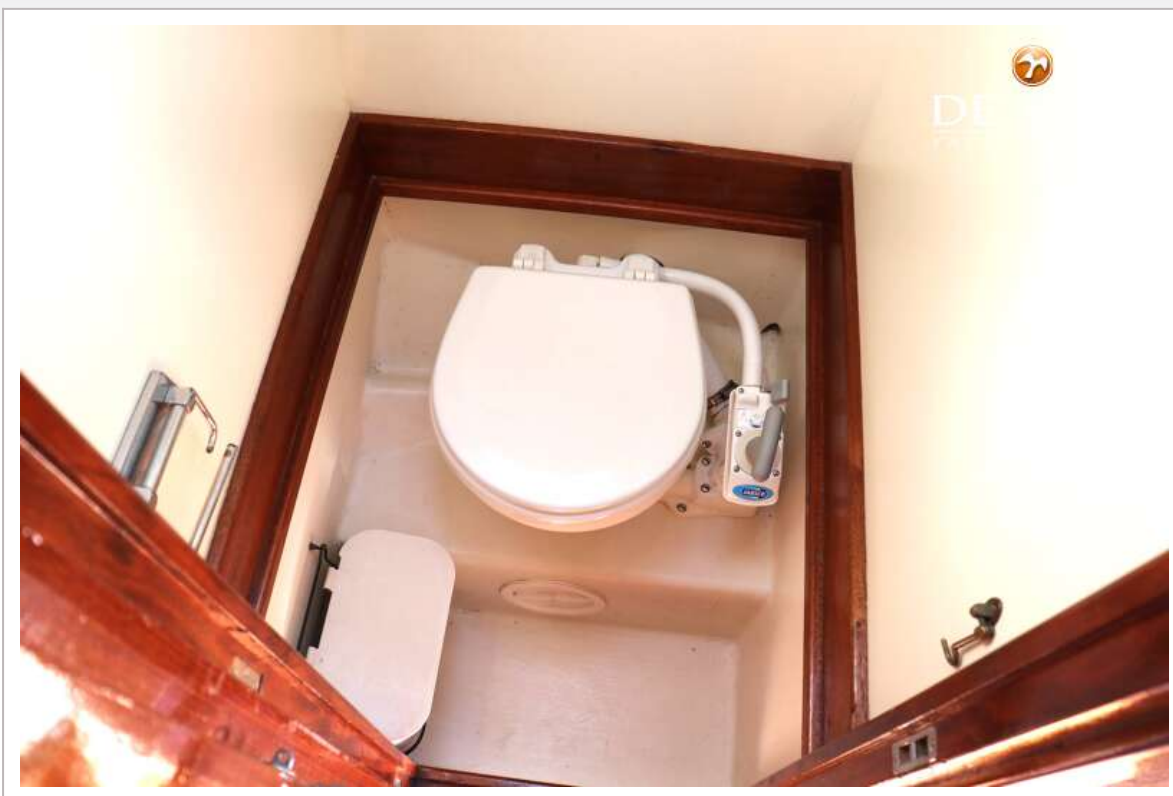


TRADEWIND ATOLL 25









TRADEWIND ATOLL 25



