



## STAVELSE KOTTER 1040



# STAVERSE KOTTER 1040

## BROKER'S COMMENTS

The Staverse Kotter 1040 is a classic motor sailer built by the renowned yard De Volharding Stavoren (home of the Sturier). This very well maintained Staverse Kotter 1040 has Rigid and tough forms and is a familiar sight on the water. It is a comfortable yacht at sea and on inland waterways. The masts can come off and then she is also perfect for the French canals. Inside you will find lots of comfort in the wheelhouse, a spacious saloon downstairs and two spacious 2 person beds. She is ready for a visit on appointment.

*Joris van de Rijt*

## SPECIFICATIONS

<b>Dimensions</b>	10.40 x 3.50 x 1.10 (m)	<b>Builder</b>	van der Werff / Volharding Stavoren
<b>Built</b>	1992	<b>Cabins</b>	2
<b>Material</b>	Steel	<b>Berths</b>	4
<b>Engine(s)</b>	1 x Iveco 8041M08 diesel	<b>Hp/Kw</b>	80.00 (hp), 58.88 (kw)
<b>Asking price</b>	sold (VAT )	<b>Lying</b>	elsewhere / Not at sales office

## CONTACT

<b>Sales office</b>	De Valk Sint Annaland B.V.	<b>Telephone</b>	+31 (0)166 601 000
<b>Address</b>	Koelhuisweg 4 4697 RM Sint Annaland NL	<b>E-mail</b>	sintannaland@devalk.nl

## DISCLAIMER

These particulars are given in good faith as supplied but cannot be guaranteed.



# STAVERSE KOTTER 1040

## GENERAL

Model	STAVERSE KOTTER 1040
Type	motorsailer
LOA (m)	10,40
Beam (m)	3,50
Draft (m)	1,10
Air draft (m)	10,50
Air draft min (m)	2,70
Headroom (m)	2,00
Year built	1992
Builder	Van der Werff / Volharding Stavoren
Country	The Netherlands
Displacement (t)	12
CE norm	NA
Hull material	steel
Hull colour	black
Hull shape	hard chine
Keel type	bilge keels
Superstructure material	wood Re-painted in 2019
Rubbing strake	steel
Deck material	steel
Deck finish	non-skid paint
Superstructure deck finish	paint
Cockpit deck finish	teak
Window frame	aluminium
Window material	double glazing
Deckhatch	2 x
Fuel tank (litre)	steel 2 x 300
Level indicator (fuel tank)	yes
Freshwater tank (litre)	stainless steel 500
Level indicator (freshwater)	yes



# STAVELSE KOTTER 1040

Wheel steering	hydraulic
Outside helm position	hydraulic

## ACCOMMODATION

Cabins	2
Berths	4
Interior	teak
Floor	carpet + teak in pilot house / decksalon
Pilot house/deck saloon	yes
Saloon	yes
Headroom saloon (m)	2,00
Heating	diesel ducted hot air + 230 volt radiators
Dinette	2 x
Opening door to cockpit	yes
Galley	yes
Countertop	plastic
Sink	stainless steel
Cooker	2 burner (bio ethanol)
Oven	yes
Fridge	1 x in galley + 1 x under sofa
Freezer	In galley fridge
Hot water system	220V + engine (new boiler element and thermostat 2023)
Water pressure system	electrical
Owners cabin	double bed
Bed length (m)	2,00 x 1,20
Wardrobe	hanging and shelves
Bathroom	shared
Toilet	shared
Toilet system	manual Jabsco
Wash basin	in the bathroom
Shower	shared



# STAVELSE KOTTER 1040

Guest cabin 1	double bed
Bed length (m)	2,00 x 1,20
Wardrobe	shelves

## MACHINERY

No of engines	1
Make	Iveco
Type	8041M08
HP	80
kW	58.88
Fuel	diesel
Year installed	1992
Engine hours	2742
Engine cooling system	closed keelcooling
Drive	shaft
Engine controls	bowden cable
Gearbox	mechanical Velvet
Bowthruster	electric
Thrust bearing	yes
Propeller type	fixed
Propeller blades	3
Shaft lubrication	grease
Electric bilge pump	yes
Electrical installation	24V/220V
Start battery	2 x
Service battery	2 x
Bowthruster battery	2 x
Battery monitor	yes
Battery charger	Mastervolt 24V / 75amp
Inverter	Waeco 1500 Watt
Shorepower	with cable



Extra info	220 Volt partly new 2023
Extra info	New hi-quality engine room insulation 2023
Extra info	Last engine service 05-2023

## NAVIGATION

Compass	Sigma (with airbubble)
Depth sounder	VDO
Log	VDO
VHF handheld	Lowrance LHR-80
Autopilot	Raymarine ST6002 with wireless remote
Rudder angle indicator	On autopilot
Plotter/GPS	Simrad CP31
Navigation lights	yes

## EQUIPMENT

Window cover	yes
Boarding ladder	wood
Anchor	Danforth Stainless steel
Anchor chain	yes
Windlass	manual
Sea railing	stainless steel
Grab rail (superstructure)	stainless steel
Railing side opening gates	2 x
Pushpit	yes
Pulpit	yes
Lifebuoy	yes
Wiper	2 x
Fenders	yes
Mooring lines	yes
TV	Samsung (in salon)
Radio	Blaupunkt



Speakers in salon	yes
Clock - barometer	(barometer only)
Fire extinguisher	yes

## RIGGING

Rigging	ketch-cutter
Standing rigging	wire
Material mast	aluminium
Mast lowering system	Manual
Mainsail	yes
Mainsail cover	yes
Mizzen	yes
Mizzen sailcover	yes
Jib	yes
Genoa furler	Harken
Gennaker	Halfwinder
Reefing System	slabreefing
Boomvang	tackle
Genoa sheetwinches	2 x Lewmar 30 ST
Extra info	Collapsible stainless steel bowsprit





# STAVERSE KOTTER 1040

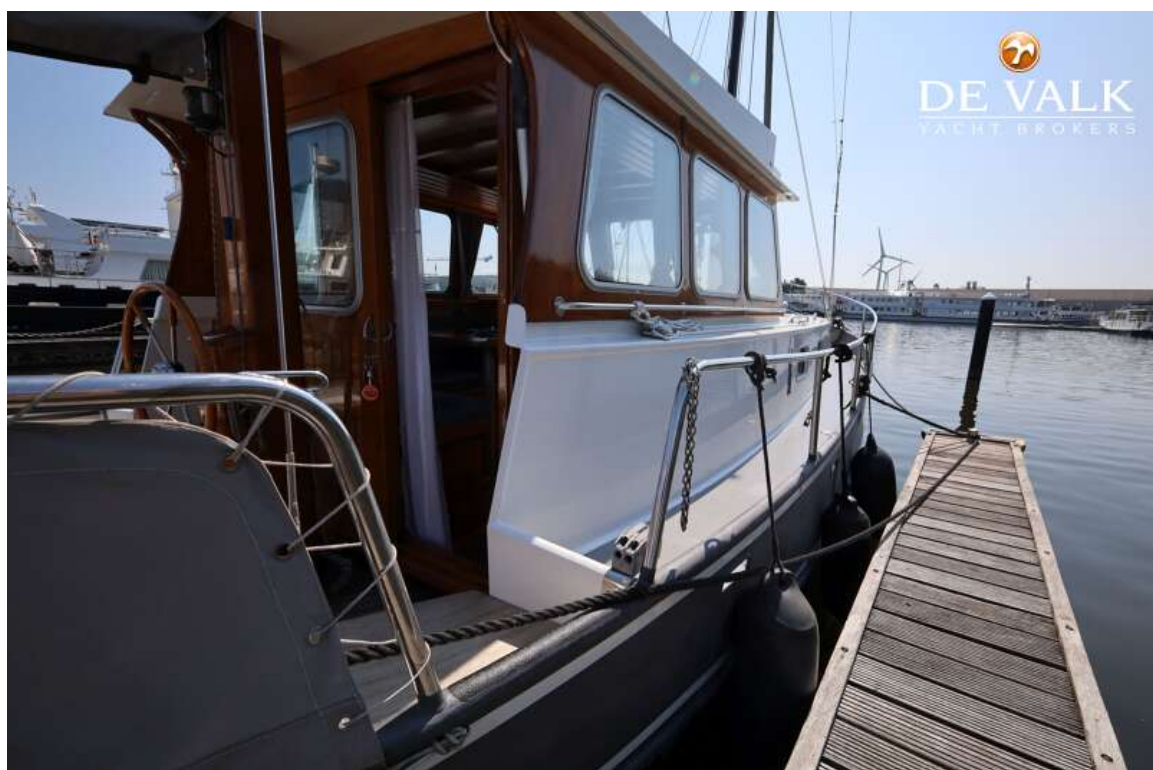




# STAVERSE KOTTER 1040

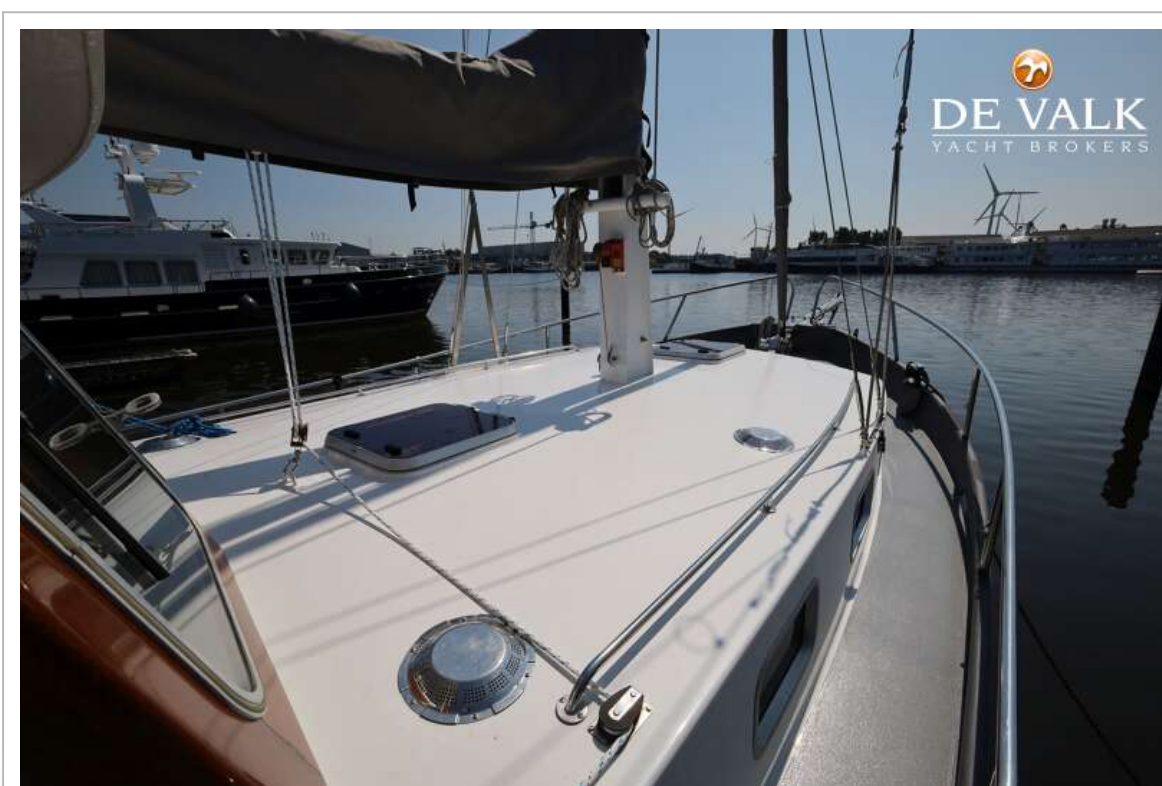


# STAVERSE KOTTER 1040





# STAVERSE KOTTER 1040



# STAVERSE KOTTER 1040

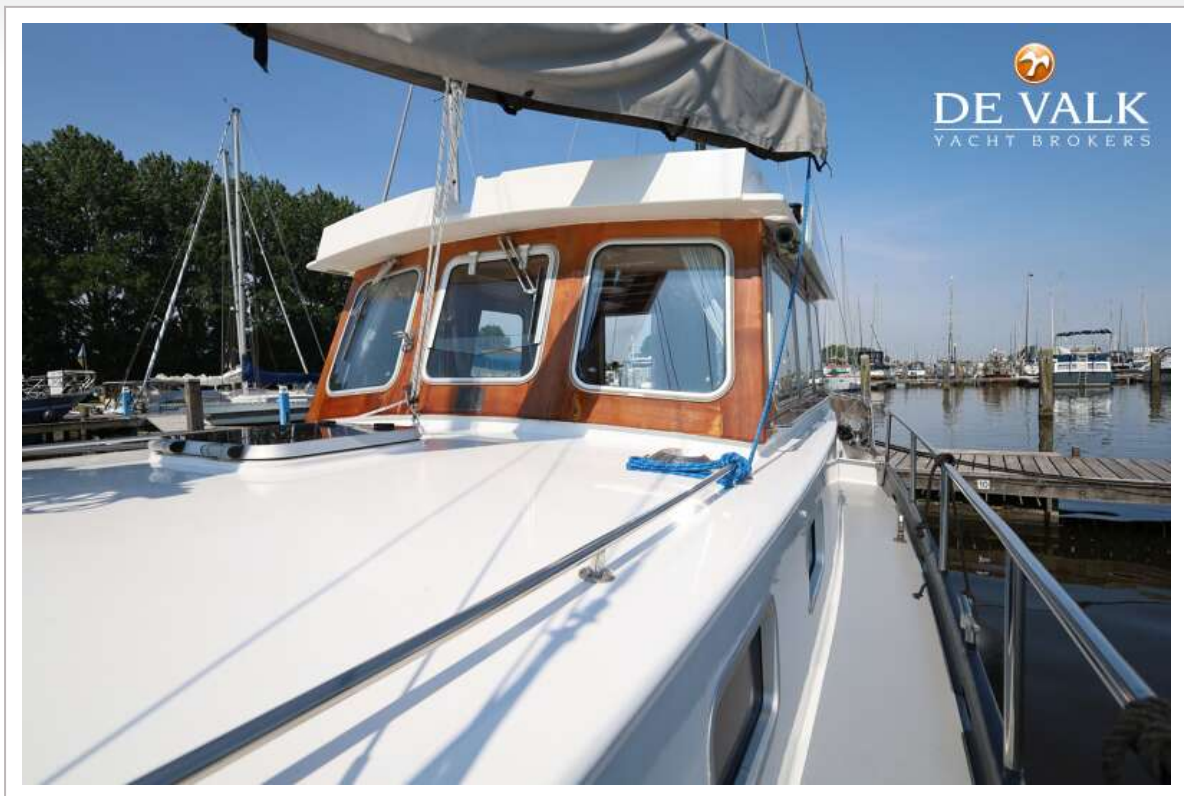




# STAVERSE KOTTER 1040

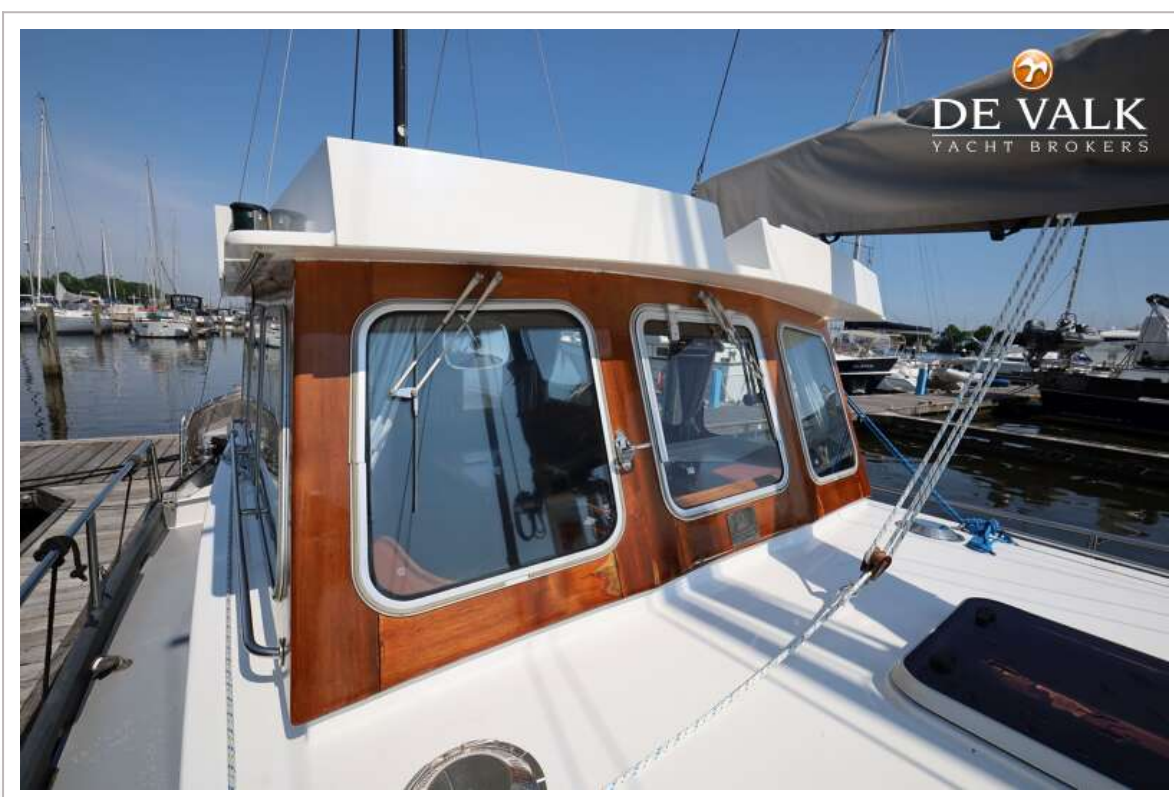
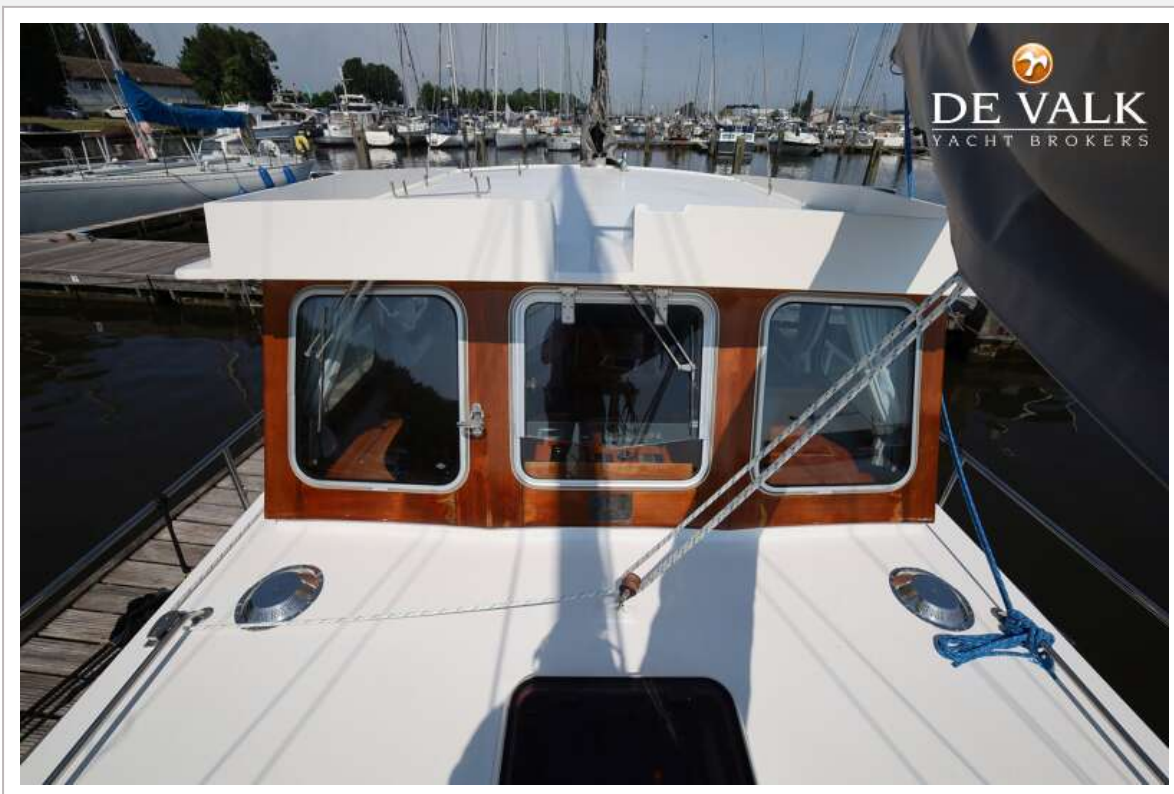


# STAVERSE KOTTER 1040

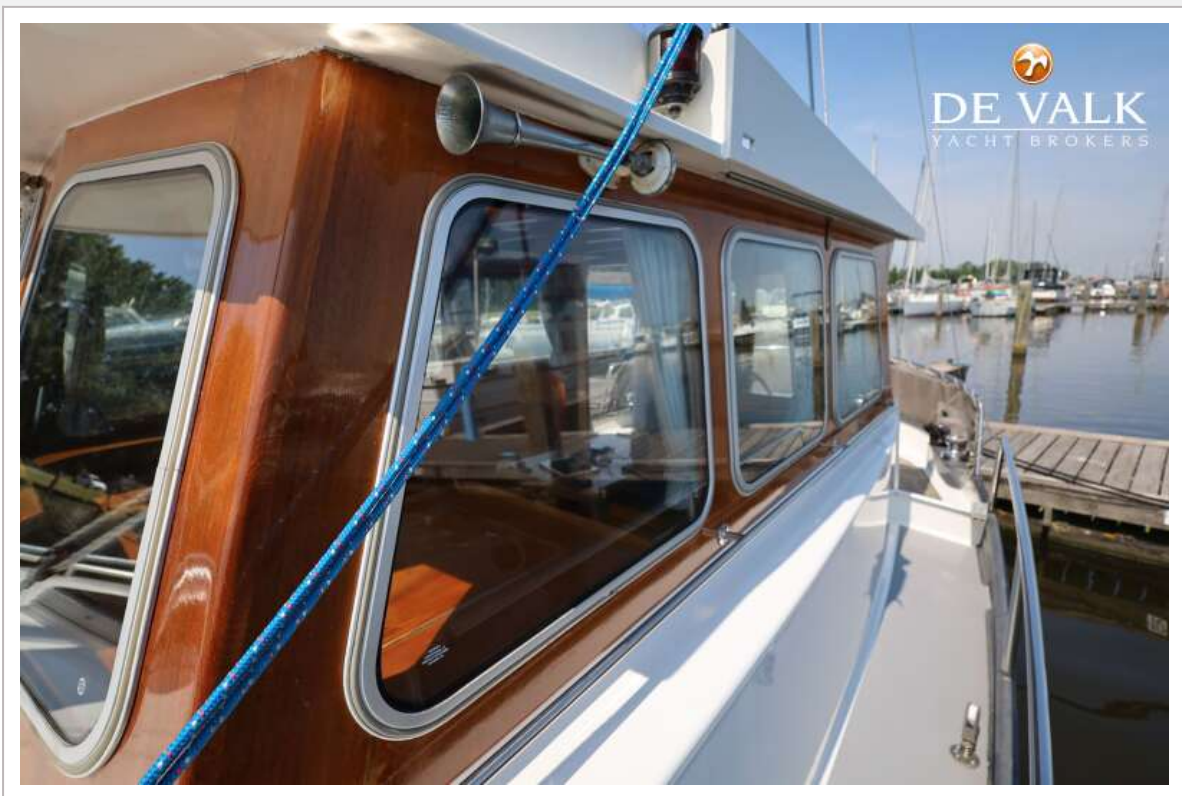




# STAVERSE KOTTER 1040



# STAVERSE KOTTER 1040





# STAVERSE KOTTER 1040

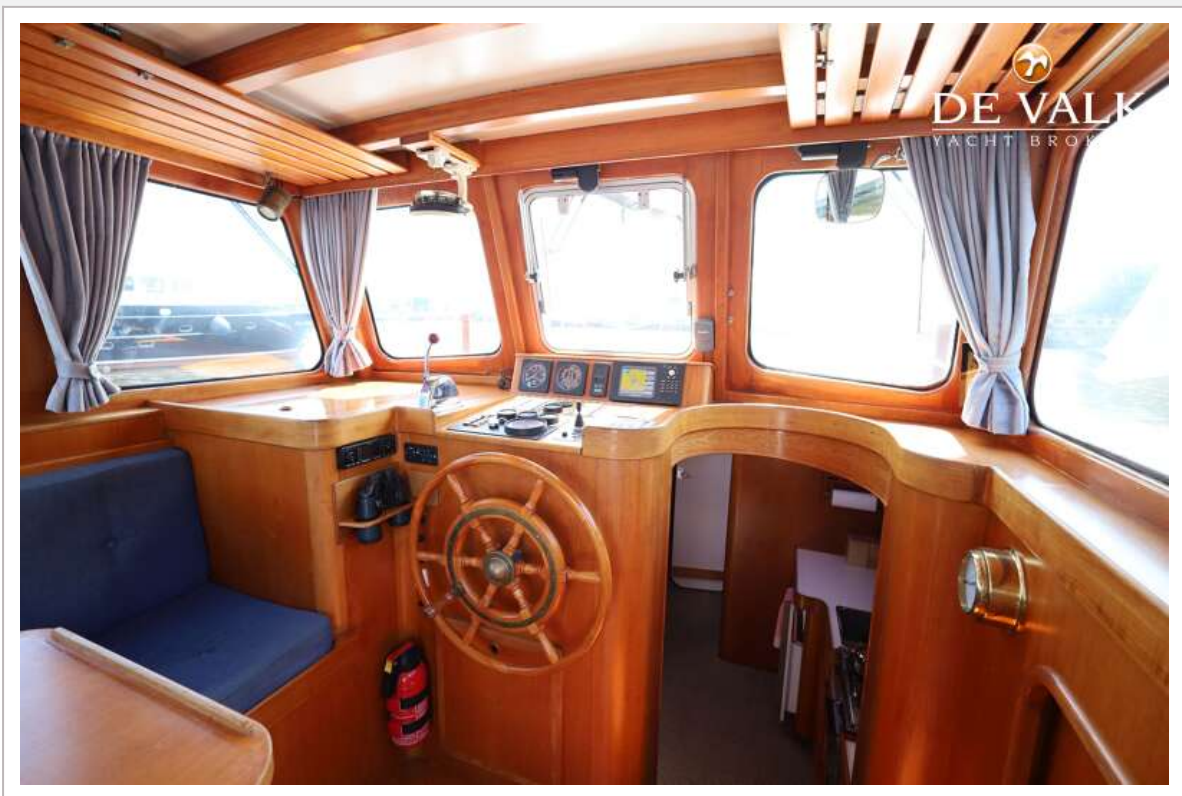


# STAVERSE KOTTER 1040

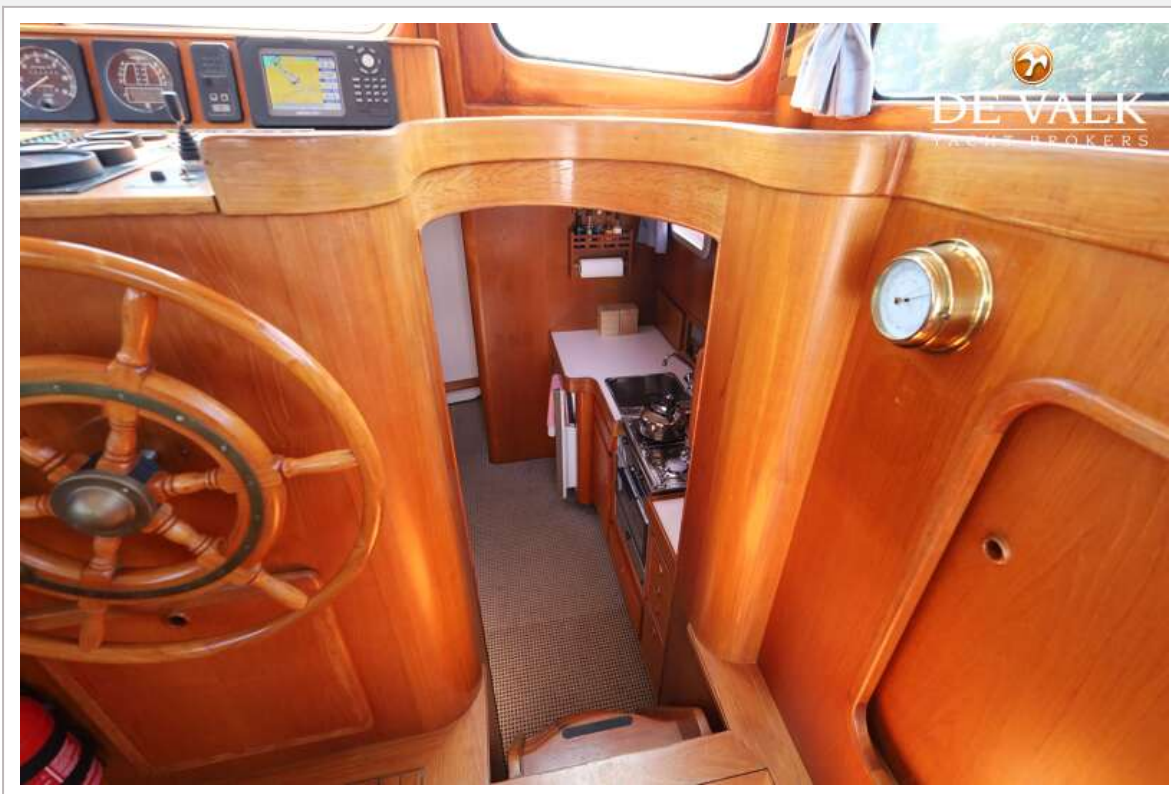




# STAVERSE KOTTER 1040



# STAVERSE KOTTER 1040





# STAVERSE KOTTER 1040



# STAVERSE KOTTER 1040





# STAVERSE KOTTER 1040

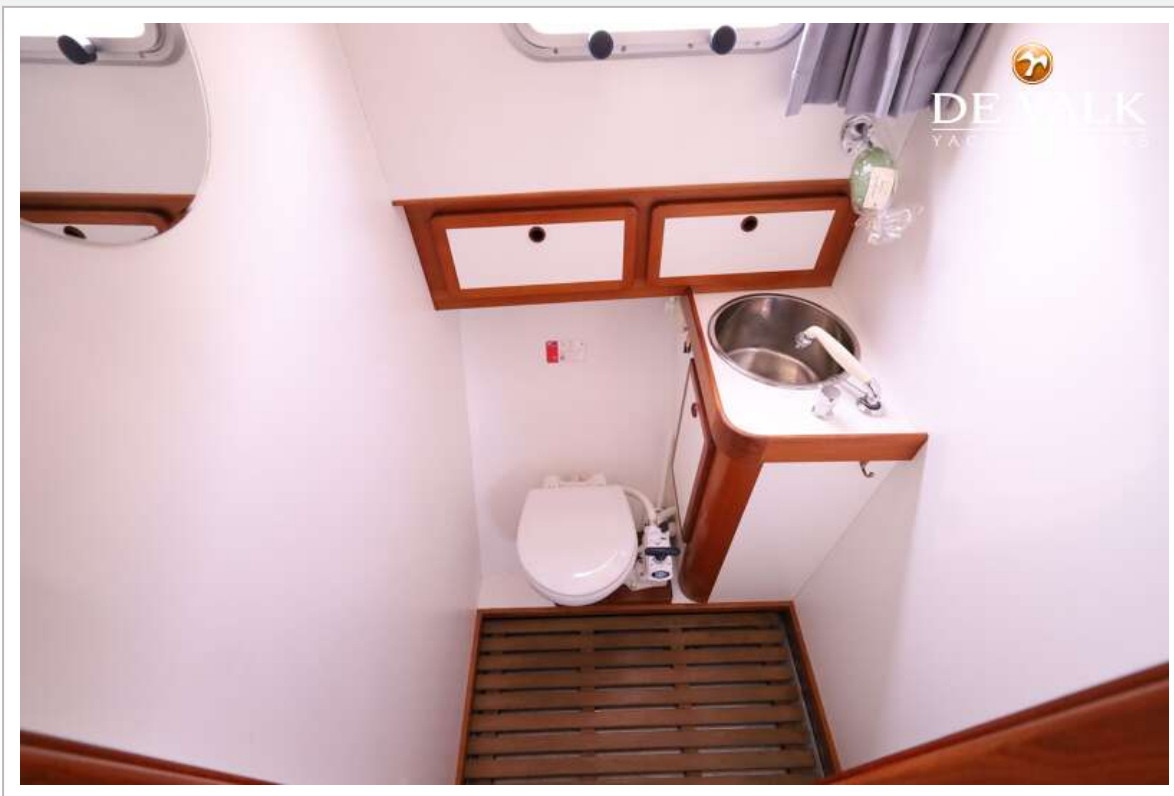


## STAVERSE KOTTER 1040

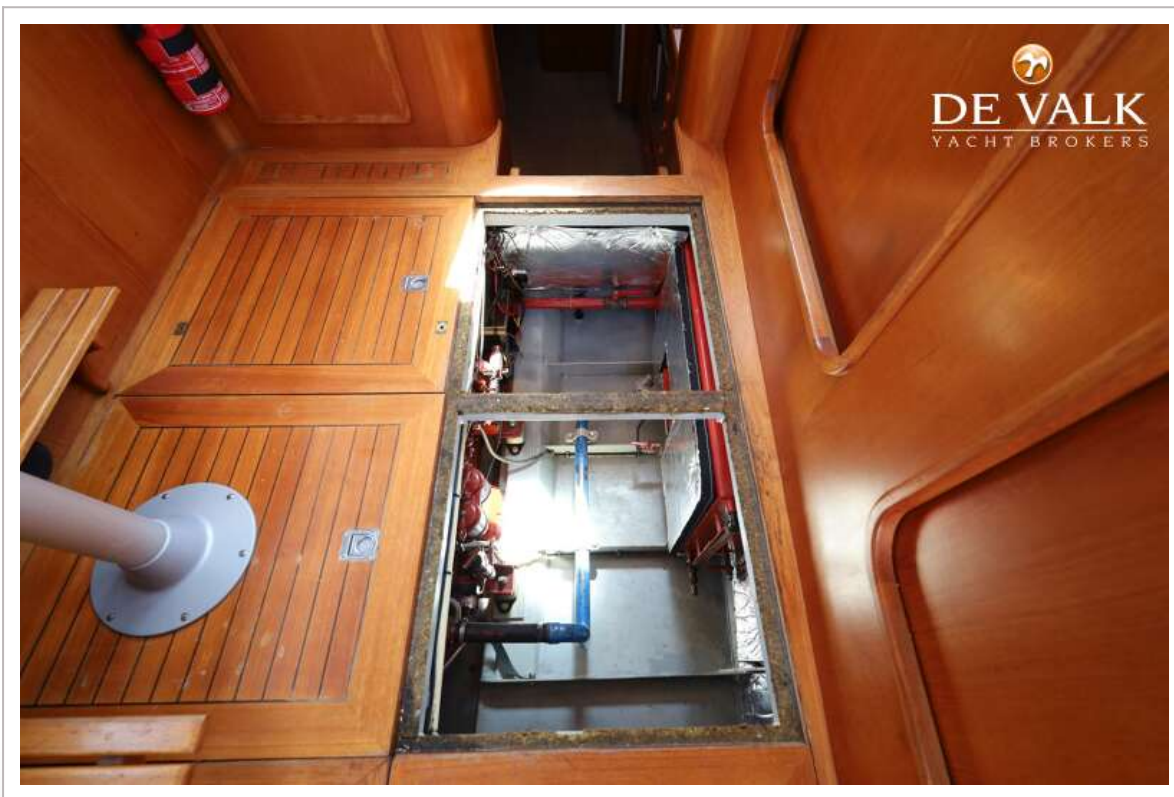




## STAVERSE KOTTER 1040



# STAVERSE KOTTER 1040





# STAVERSE KOTTER 1040

