



DE VALK  
YACHT BROKERS



## SUNSEEKER CAMARGUE 46



DE VALK  
YACHT BROKERS

# SUNSEEKER CAMARGUE 46

## BROKER'S COMMENTS

Sunseeker is synonymous with luxury and exclusivity "Lazy Day " Camargue 46 is a true traditionally built Sunseeker. "Lazy Day "can be viewed seven days a week in our covered sales marina in Sneek

*Henk de Vries*

## SPECIFICATIONS

<b>Dimensions</b>	13.87 x 4.10 x 1.10 (m)	<b>Builder</b>	Sunseeker Yachts
<b>Built</b>	1991	<b>Cabins</b>	2
<b>Material</b>	GRP	<b>Berths</b>	4
<b>Engine(s)</b>	2 x Detroit Diesel 6V92 diesel	<b>Hp/Kw</b>	2 x 550.00 (hp), 404.80 (kw)
<b>Asking price</b>	€ 119.000 (VAT Paid)	<b>Lying</b>	at sales office

## CONTACT

<b>Sales office</b>	De Valk Sneek	<b>Telephone</b>	+31 515 42 80 30
<b>Address</b>	Zwolsmanweg 7 8606 KC Sneek The Netherlands	<b>E-mail</b>	sneek@devalk.nl

## DISCLAIMER

These particulars are given in good faith as supplied but cannot be guaranteed.



# SUNSEEKER CAMARGUE 46

## GENERAL

<b>Model</b>	SUNSEEKER CAMARGUE 46
<b>Type</b>	motor yacht
<b>LOA (m)</b>	13,87
<b>Beam (m)</b>	4,10
<b>Draft (m)</b>	1,10
<b>Headroom (m)</b>	1,90
<b>Year built</b>	1991
<b>Builder</b>	Sunseeker Yachts
<b>Country</b>	United Kingdom
<b>Displacement (t)</b>	11
<b>CE norm</b>	NA
<b>Hull material</b>	GRP
<b>Hull colour</b>	white
<b>Hull shape</b>	deep-V
<b>Superstructure material</b>	GRP
<b>Rubbing strake</b>	stainless steel
<b>Deck material</b>	GRP
<b>Deck finish</b>	synthetic teak
<b>Cockpit deck finish</b>	synthetic teak
<b>Dorades</b>	yes
<b>Window frame</b>	aluminium
<b>Window material</b>	glass
<b>Deckhatch</b>	yes
<b>Portholes</b>	stainless steel
<b>Radar arch</b>	non collapsible
<b>Fuel tank (litre)</b>	Ca 1400
<b>Level indicator (fuel tank)</b>	yes
<b>Freshwater tank (litre)</b>	Ca 310
<b>Level indicator (freshwater)</b>	yes
<b>Wheel steering</b>	hydraulic



# SUNSEEKER CAMARGUE 46

Outside helm position hydraulic

## ACCOMMODATION

Cabins	2
Berths	4
Interior	yes
Floor	carpet
Saloon	yes
Headroom saloon (m)	1,85
Heating	diesel ducted hot air Eberspacher
Dinette	yes
Galley	yes
Countertop	plastic
Sink	yes
Fridge	2x VitriFrigo
Freezer	In fridge
Wine cooler	yes
Hot water system	220V Boiler &
Water pressure system	electrical
Owners cabin	French bed
Bed length (m)	2,0
Wardrobe	hanging/drawers/shelves
Bathroom	en suite
Toilet	en suite
Toilet system	electric
Wash basin	in the bathroom
Shower	en suite

## MACHINERY

No of engines	2
Make	Detroit Diesel



# SUNSEEKER CAMARGUE 46

Type	6V92
HP	550
kW	404.80
Fuel	diesel
Engine hours	4880
Engine cooling system	seawater
Drive	shaft
Engine controls	bowden cable Morse
Gearbox	hydraulic
Bowthruster	electric Vetus
Exhaust	watercooled
Propeller type	fixed
Propeller blades	4
Propeller shaft material	stainless steel
Shaft lubrication	water
Electric bilge pump	yes
Electrical installation	12V / 220V
Generator	Dynamica 5Kw @ 3000rpm
Batteries	4 x
Start battery	1 x
Service battery	2 x
Bowthruster battery	1 x
Battery monitor	Mastervolt
Battery charger	yes
Inverter	yes
Shorepower	with cable
Trimtabs	Bennett

## NAVIGATION

Compass	Ritchie
Electric compass	Raymarine C70



# SUNSEEKER CAMARGUE 46

Depth sounder/log	Raymarine ST60
VHF	Raymarine Ray240E
Rudder angle indicator	yes
Plotter/GPS	Raymarine C70
Navigation lights	yes

## EQUIPMENT

Fixed windscreen	yes
Sprayhood	yes
Bimini	yes
Cockpit cushions	yes
Cockpit table	yes
Bathing platform	yes
Boarding ladder	yes
Gangway	yes
Deck shower	yes
Anchor	yes
Anchor chain	yes
Windlass	electrical
Davits	stainless steel
Davits controls	electrical
Sea railing	stainless steel
Railing side opening gates	yes
Wiper	2 x
Horn	electric
Fenders	yes
Mooring lines	yes
TV	2 x Sharp flatscreen
TV receiver	yes
Radio-cd player	yes
Cockpit speakers	yes



Speakers in salon	yes
Fire extinguisher	yes



# SUNSEEKER CAMARGUE 46





# SUNSEEKER CAMARGUE 46



# SUNSEEKER CAMARGUE 46



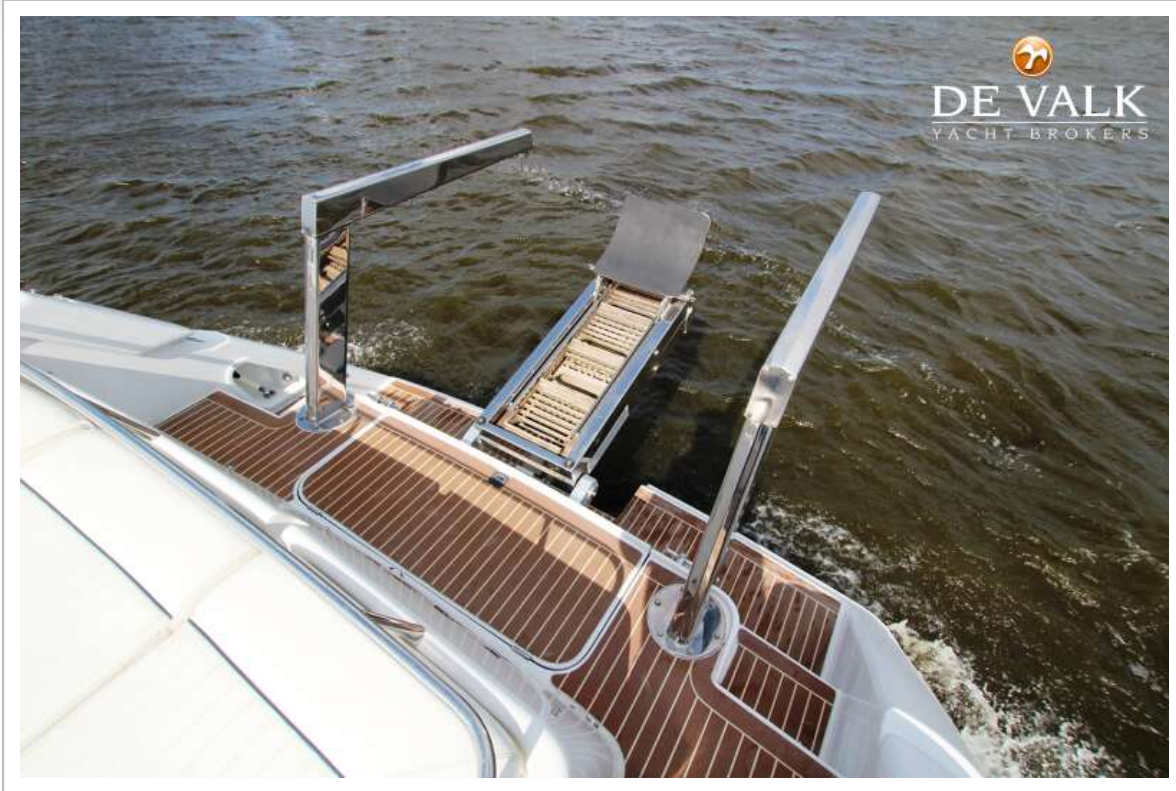
# SUNSEEKER CAMARGUE 46



# SUNSEEKER CAMARGUE 46



# SUNSEEKER CAMARGUE 46



# SUNSEEKER CAMARGUE 46



# SUNSEEKER CAMARGUE 46

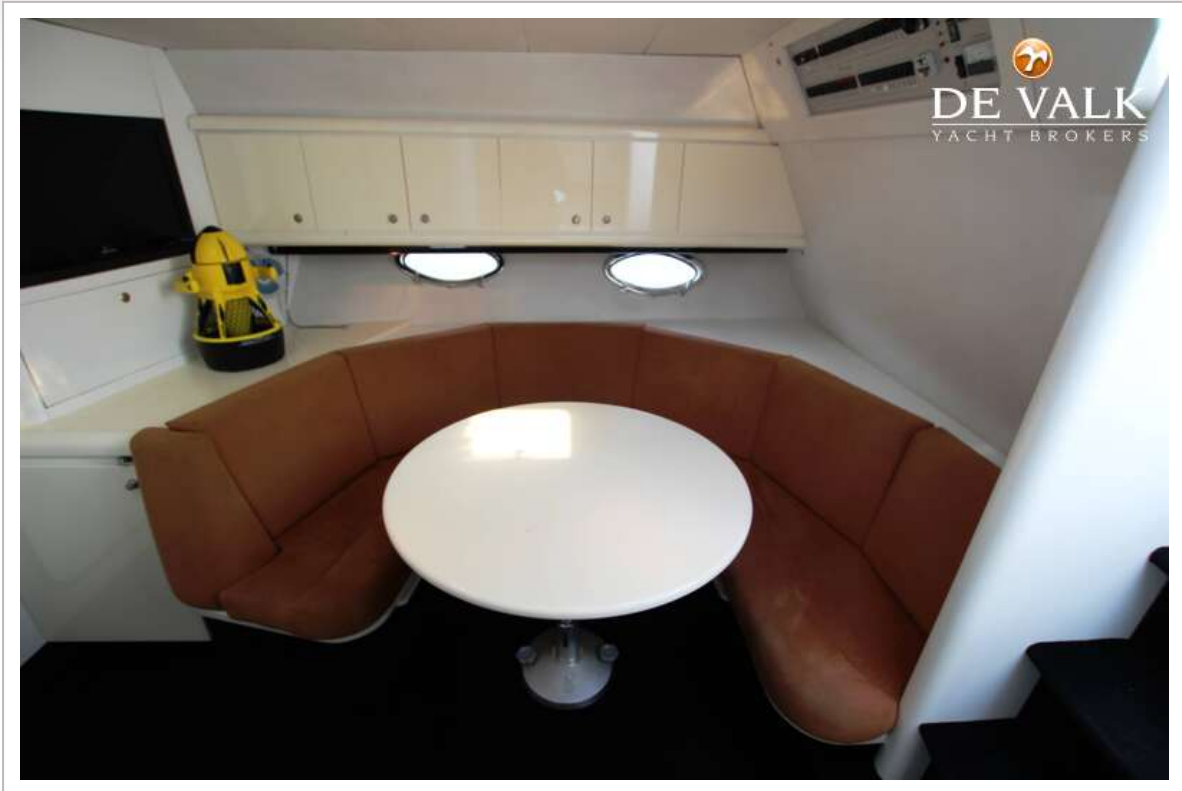


# SUNSEEKER CAMARGUE 46





# SUNSEEKER CAMARGUE 46



# SUNSEEKER CAMARGUE 46



# SUNSEEKER CAMARGUE 46

