



BAVARIA 44-4



DE VALK
YACHT BROKERS

BROKER'S COMMENTS

Ready to sail! If you are preparing the season in the Med, you need to consider this Bavaria 44. Well maintained and lots of upgrades done by the dedicated owner. In incredibly good shape for the years she counts. Nicely equipped with a comfortable 4 cabins layout. I would be glad to show you this amazing sailboat.

Cristián Figari Jullian

SPECIFICATIONS

Dimensions	13.95 x 4.24 x 1.95 (m)	Builder	Bavaria Yachts GmbH
Built	2002	Cabins	4
Material	GRP	Berths	8
Engine(s)	1 x Volvo Penta D2-55 diesel	Hp/Kw	55.00 (hp), 40.48 (kw)
Asking price	sold (VAT)	Lying	contact sales office

CONTACT

Sales office	De Valk Costa Blanca	Telephone	+34 96 50 21 569
Address	Costa Blanca Region 03730 Javea Alicante ES	E-mail	costablanca@devalk.nl

DISCLAIMER

These particulars are given in good faith as supplied but cannot be guaranteed.



GENERAL

Model	BAVARIA 44-4
Type	sailing yacht
LOA (m)	13,95
LWL (m)	11,43
Beam (m)	4,24
Draft (m)	1,95
Air draft (m)	18,50
Year built	2002
Launched	May 2002
Builder	Bavaria Yachts GmbH
Country	Germany
Designer	J&J Design
Displacement (t)	9,6
Ballast (tonnes)	lead 3
CE norm	A
Hull material	GRP
Hull colour	white
Hull shape	round-bilged
Keel type	fin keel
Superstructure material	GRP
Deck material	GRP White
Deck finish	non-skid moulded in
Cockpit deck finish	teak
Antifouling (year)	May 2023
Window frame	aluminium
Window material	polycarbonate
Deckhatch	Fwd hatch new 2023
Portholes	aluminium
Fuel tank (litre)	polyethylene 210
Level indicator (fuel tank)	yes



Freshwater tank (litre)	polyethylene 360, 210+150
Level indicator (freshwater)	yes
Blackwater tank (litre)	polyethylene 178; 1x 80 (fwd head) 1x 98 (aft head) New 2013
Level indicator (blackwater)	yes
Wheel steering	cable steering Double wheel
Emergency tiller	yes
Extra info	yes

ACCOMMODATION

Cabins	4
Berths	8
Interior	mahogany
Floor	woodprint
Open cockpit	yes
Saloon	U shaped setting
Headroom saloon (m)	1,90
Heating	diesel ducted hot air Eberspächer serviced 2010 (needs service)
Chart table	Starboard
Dinette	yes
Opening door to cockpit	yes
Galley	Linear, on port side
Sink	stainless steel Double
Cooker	calor gas 2x burners
Gas alarm	Nereus Gas detector system
Fridge	12 Volt, new 2012
Hot water system	220V + engine
Water pressure system	electrical
Crockery	1x melamine 1x luminarc white
Owners cabin	v-bed Double bed
Wardrobe	hanging and shelves Hanging locker on port
Bathroom	yes



Toilet	separate Fwd port
Toilet system	manual
Wash basin	in the bathroom
Shower	shared
Guest cabin 1	bunk bed Twin bunks
Wardrobe	Hanging locker
Bathroom	yes
Toilet	separate Aft port
Toilet system	manual
Wash basin	in the bathroom
Shower	yes
Guest cabin 2	double bed
Wardrobe	Hanging locker
Wash basin	at the toilet Needs repair on hot water hose
Guest cabin 3	double bed
Wardrobe	Hanging locker

MACHINERY

No of engines	1
Make	Volvo Penta
Type	D2-55
HP	55
kW	40.48
Fuel	diesel
Year installed	2002
Maximum speed (kn)	8,5
Cruising speed (kn)	7
Consumption (l/hr)	5
Engine hours	1520
Engine cooling system	seawater Maintenance done May 2023
Drive	sail-drive



Saildrive seal	Replaced in 2009 (needs service)
Engine controls	Panel show some defaults
Bowthruster	electric Sleipner 8hp w/ new model propellers, new 2009
Propeller type	folding Brutons, new 2004
Propeller blades	3
Start battery	1x 55 Ah 12V (2021)
Service battery	2x 140 Ah 12V (2021)
Bowthruster battery	1x 140 Ah 12V (2021)
Battery charger	Smart Charger 240V-12V
Inverter	12V-240V
Wind generator	Not working
Solar panel	2x 48 Watt Sunware (2012) 2x45W Sunware (2018) Removable
Shorepower	with cable 50mts & adaptors
Extra info	Galvanic Isolator 240V

NAVIGATION

Compass	2x Plastimo
Multi control display	3x Raymarine tridata x1 wind x1 wind closehailed
Forw. looking depth sounder	RL70C color display at chart table
Log	yes
VHF	ICOM M503 with DSC controller DS 100
VHF handheld	ICOM M33 new 2007 ICOM M71 w/ speaker mic new 2010
Autopilot	Raymarine ST6001 w/ remote control, new 2002
Radar	Raymarine Radome, new 2010
Plotter	E90W touch screen, new 2010
Navtex	ICS Plus 6 w/Nmea Input new antenna 2009
Electronis chart(s)	Navionics Platinum+ card west coast Spain and portugal west med
AIS transponder	Raymarine AIS 500
EPIRB	McMurdo smartfind & GPS, new 2009
Navigation lights	Aqua signal serie 41 LED Tricolor & anchor light LED



EQUIPMENT

Sprayhood	Blue, new 2018, with opening part in the middle
Bimini	Blue
Cockpit cushions	Sumbrella cover white and blue stripes and x4 floating cushions
Cockpit table	W/ x2 folding leaves
Bathing platform	yes
Boarding ladder	stainless steel
Gangway	Aluminium, folding
Deck shower	yes
Anchor	Spade 20kg
Anchor chain	75 mts galvanized 10mm
Anchor 2	Brittany 9kg
Anchor chain	20mts 8mm chain + 14mm nylon warp
Windlass	electrical Lofran "tigress" 1200W local and radio remote control
Dinghy	3D2.8M
Life raft	Ocean safety ISO needs to be checked
Life raft (pers)	container 8
Lifejackets	8x AUTO with harness & safety lines
Lifebuoy	2x horseshoe w/ light buoy
Rope cutter	Ambassador, new 2009
Binocular	2x
Radar reflector	Eco max active/enhancer, new 2010
Fenders	8x large 4x medium x2 round x1 stern x1 bow
Mooring lines	4x stainless steel mooring springs & complete set of Nylon lines
Spare parts	Large inventory of spares and tools
TV	W/ Glomex Tv antenna in mast, new 2014
Cockpit speakers	yes
Speakers in salon	yes
Clock - barometer	Weems & plath
Fire extinguisher	7x interior
Extinguisher in engine room	1x Automatic



Auto extinguisher system

Extra info

Extra info

1x bowthruster compartment

Dehumidifier 240 Watt

Set of covers

RIGGING

Rigging

Standing rigging

Brand mast

Material mast

Spreaders

Mainsail cover

Battcars

Fully battened mainsail

Genoa I

Genoa II

Genoa furler

Gennaker

Stormjib

Reefing System

Backstay adjuster

Genoa sheetwinches

Halyard winches

Multifunctional winches

Spi-pole

sloop Bermudan

wire Stainless steel (original)

Selden

aluminium

X2

Zipper Lazybag

Selden

Elvstrom Dacron original, needs attention

Elvstrom Dacron w/ UV protection

Westaway w/ UV protection new 2010

Furlex

Crusader Tri radial cruising Shute w/snuffer

Arun new 2009

slabreefing

yes

2x Harken 2 speed self-tailing

2x Harken 2 speed self-tailing

2x Harken 2 speed self-tailing

carbon



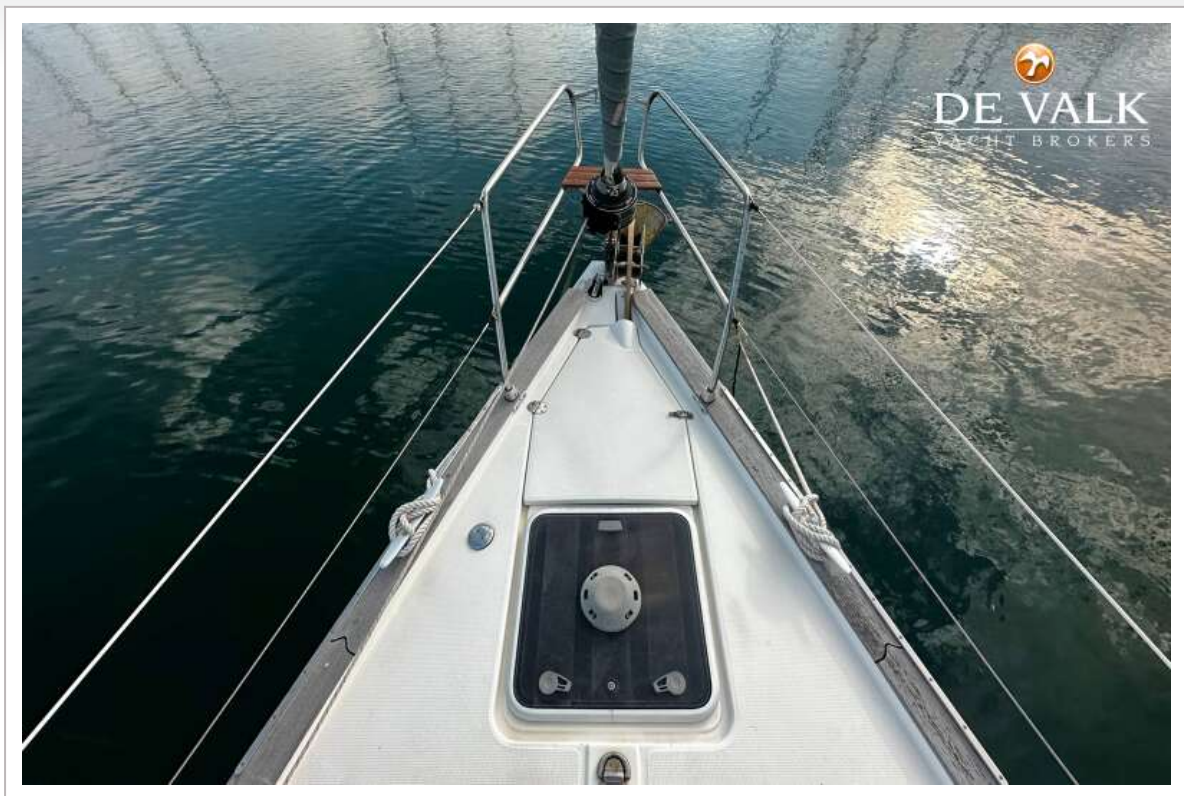
BAVARIA 44-4



BAVARIA 44-4



BAVARIA 44-4



BAVARIA 44-4



BAVARIA 44-4

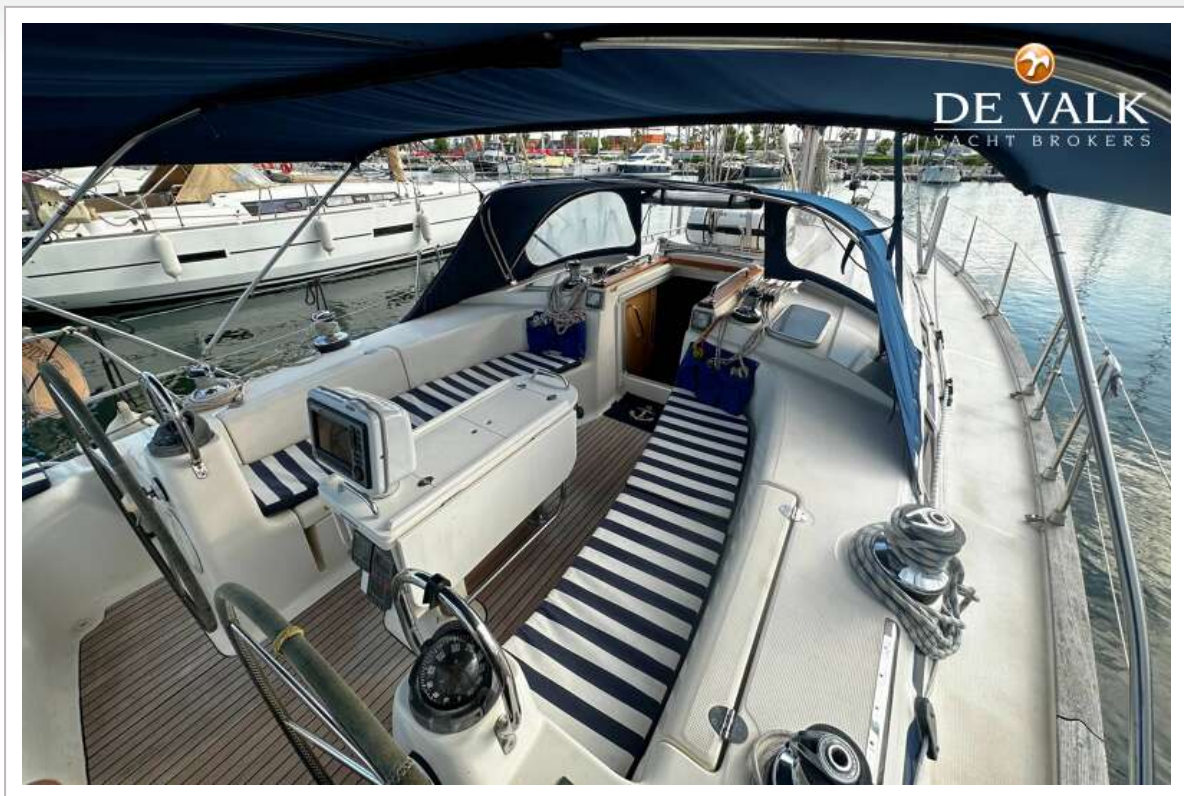




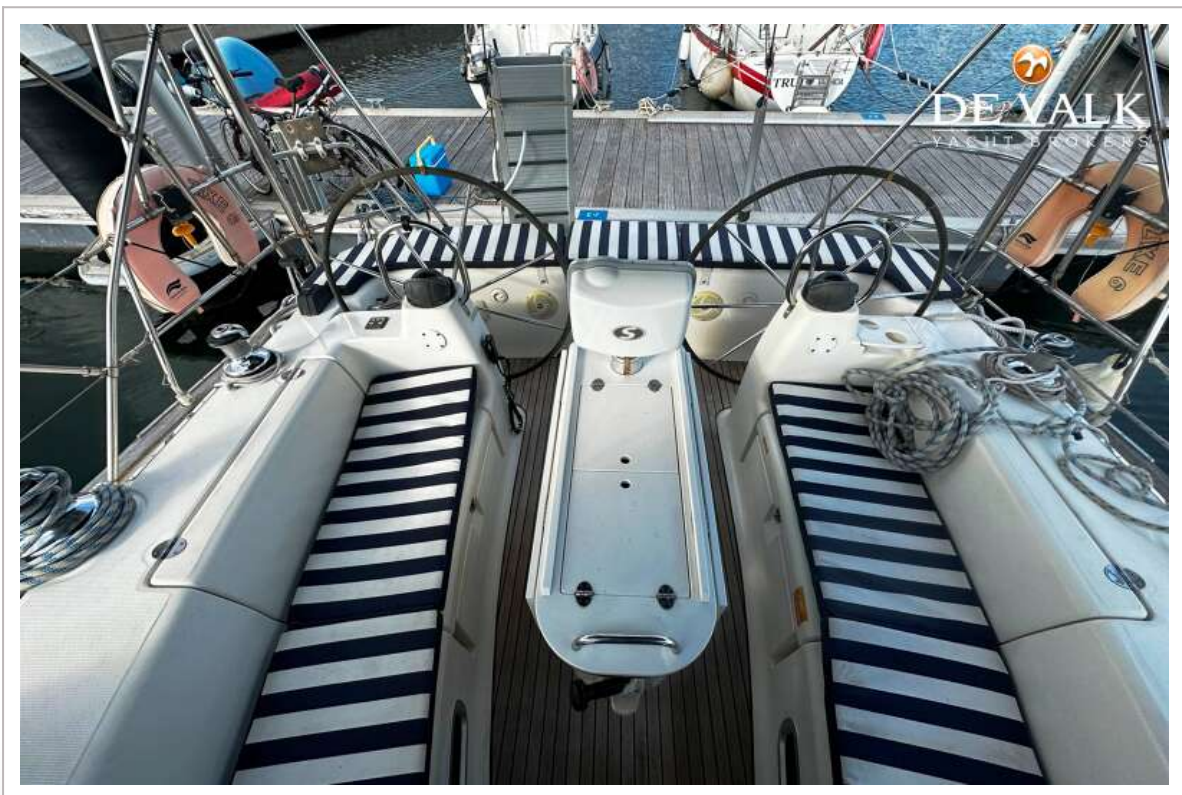
BAVARIA 44-4



BAVARIA 44-4



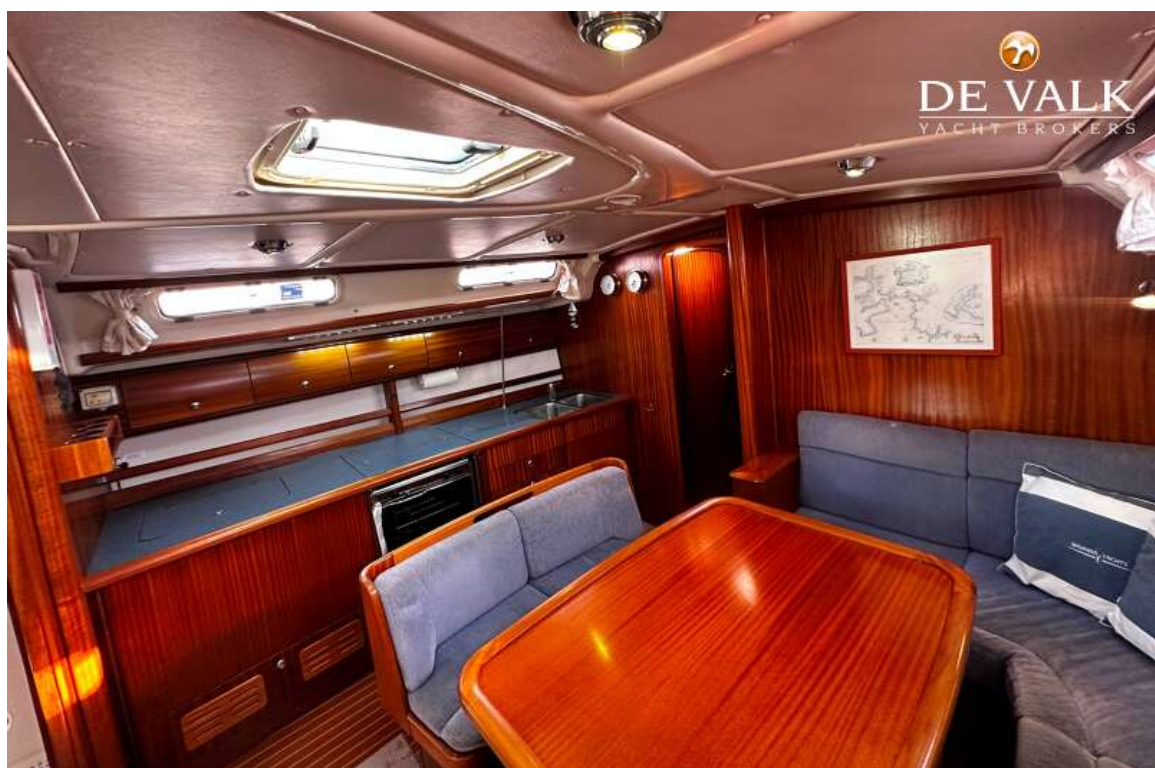
BAVARIA 44-4



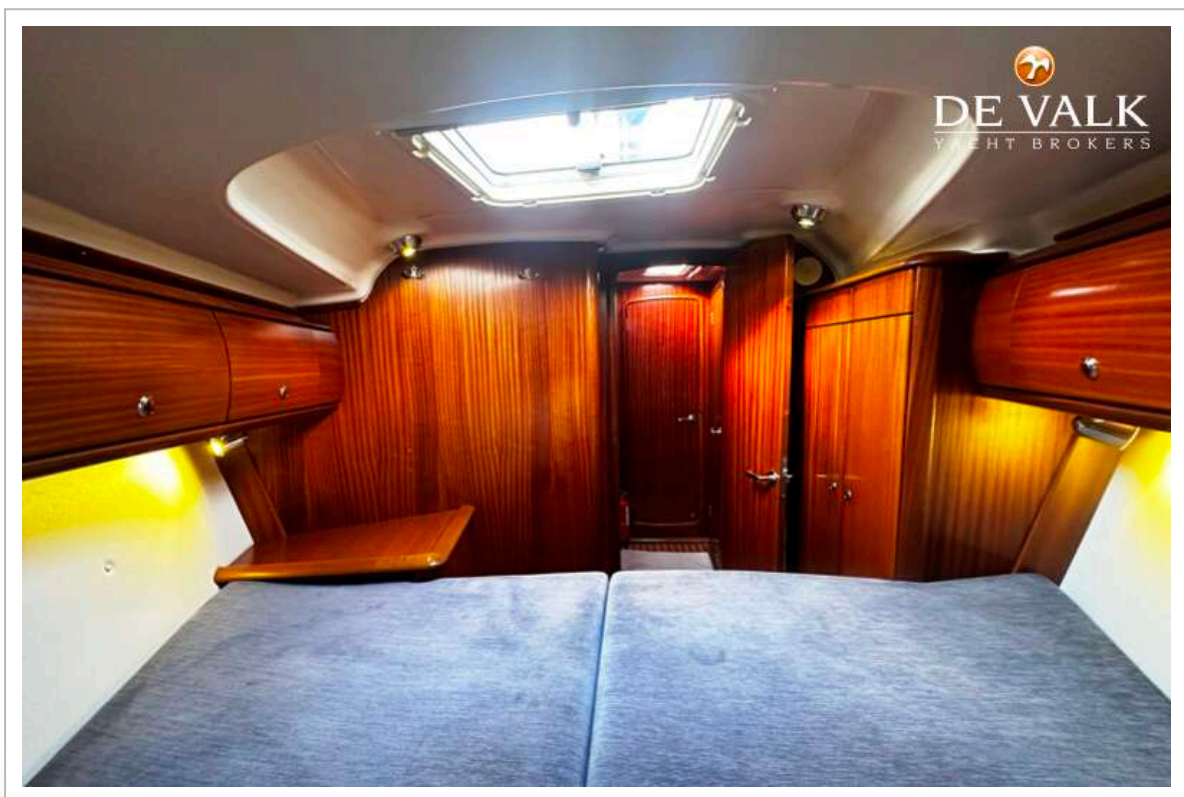
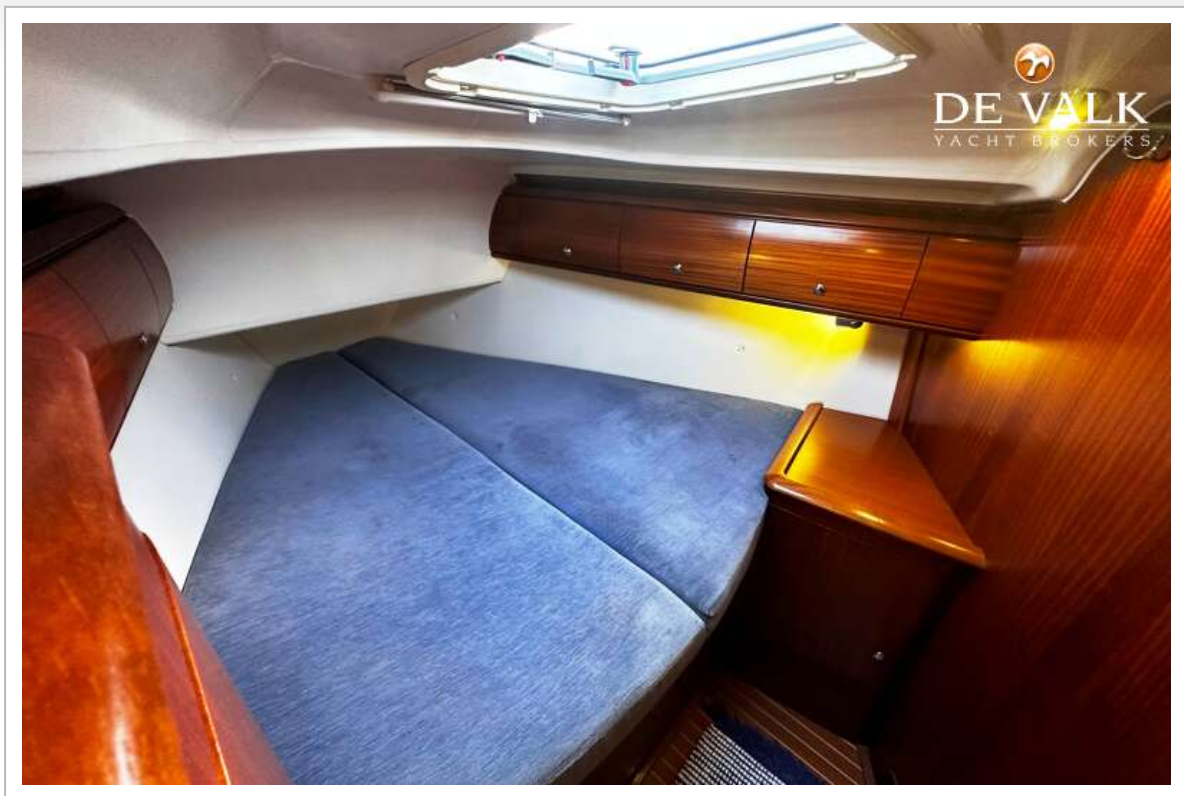
BAVARIA 44-4

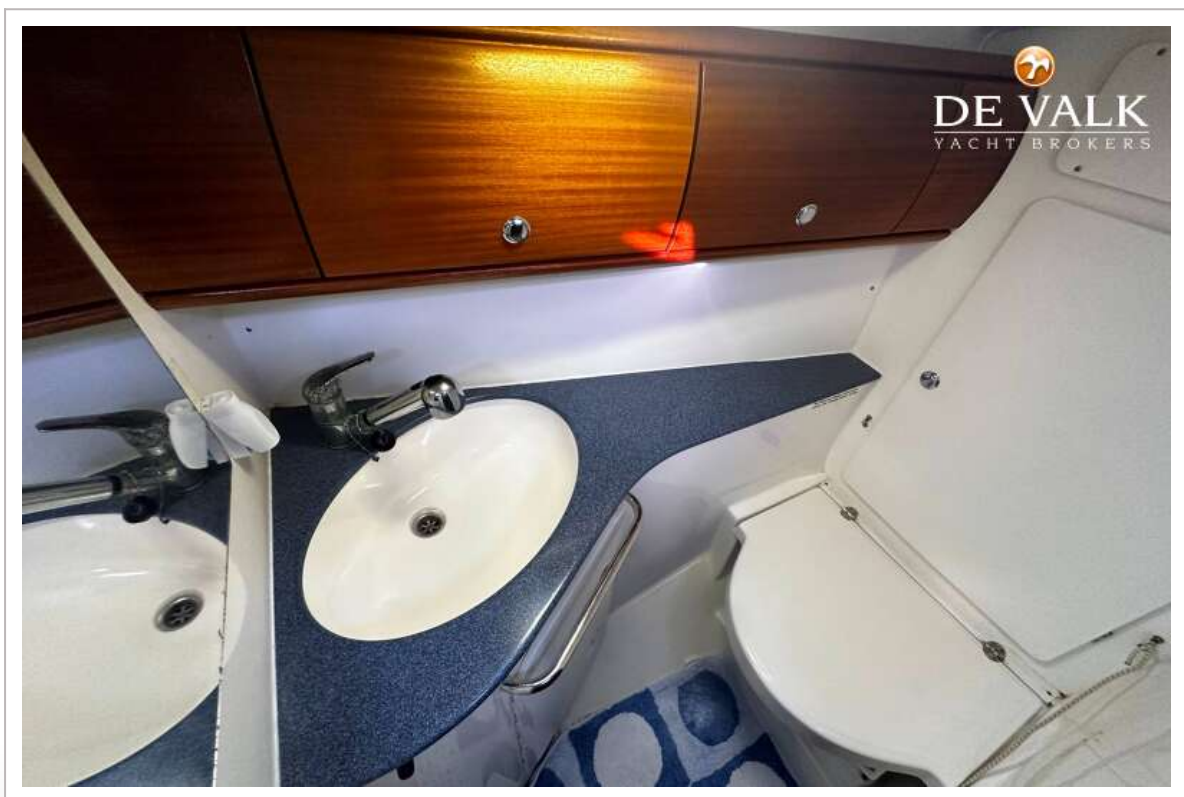
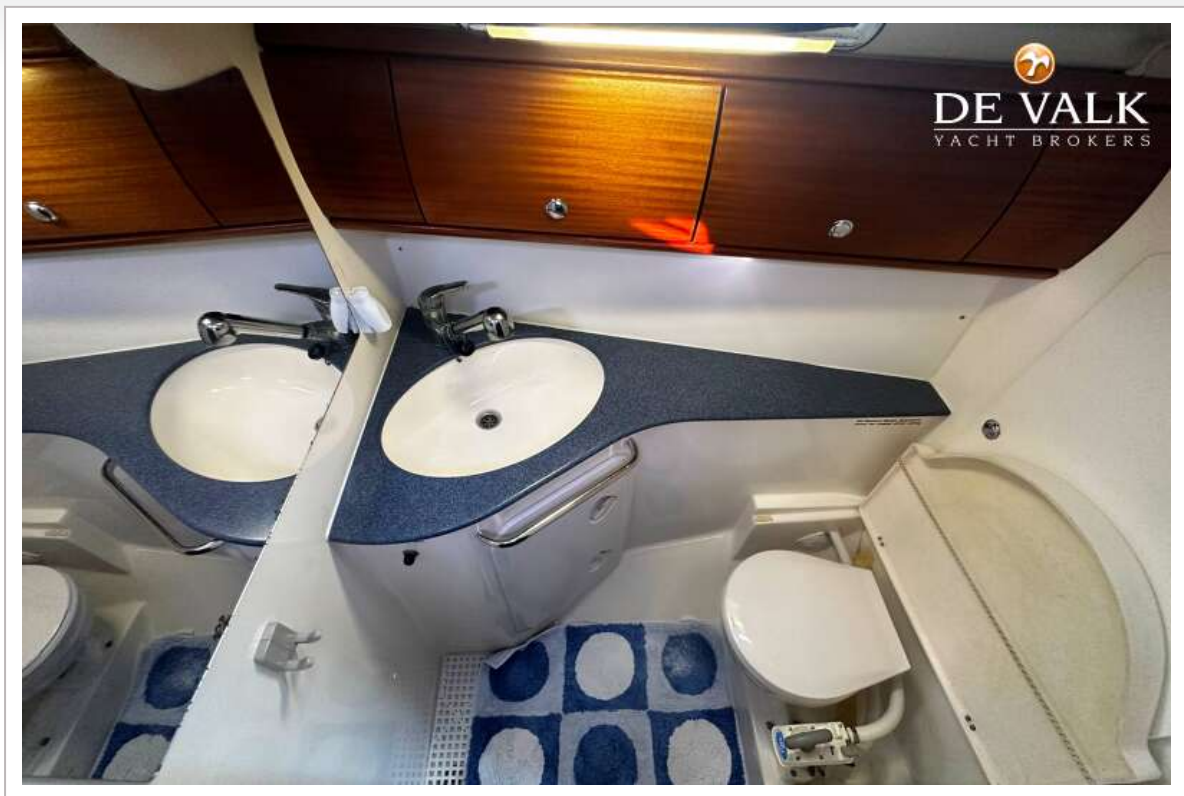


BAVARIA 44-4

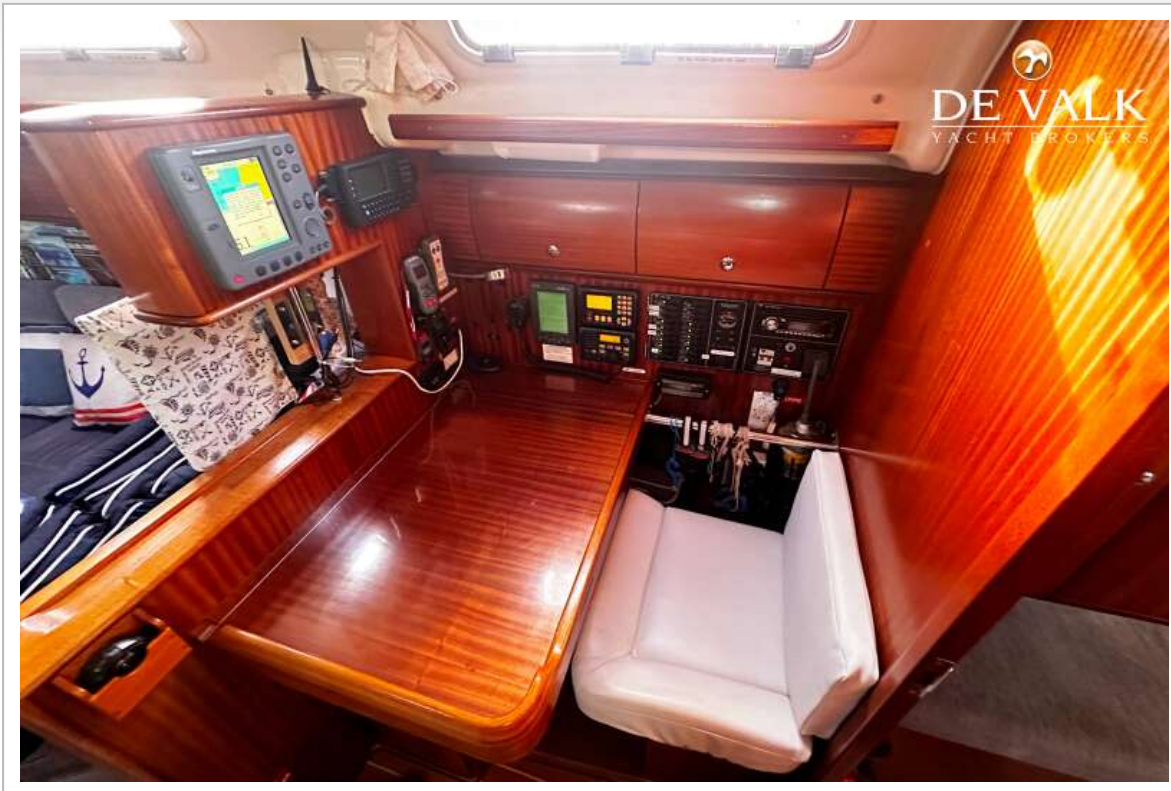


BAVARIA 44-4

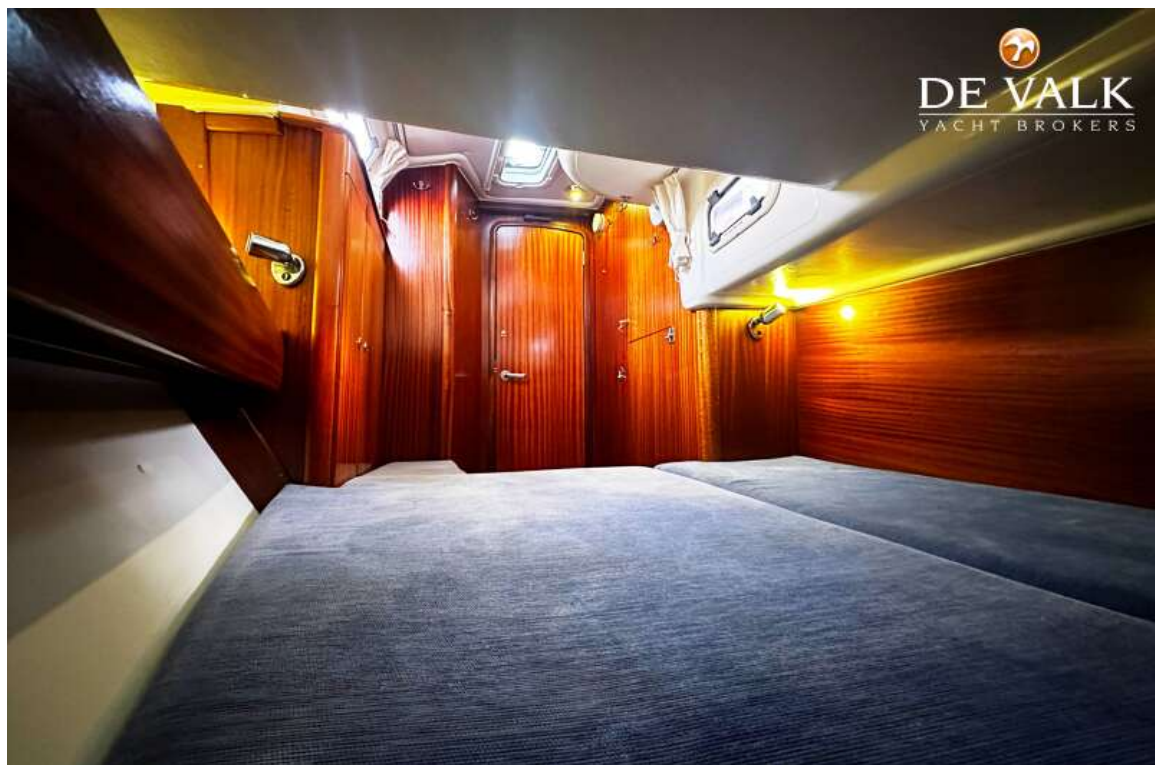
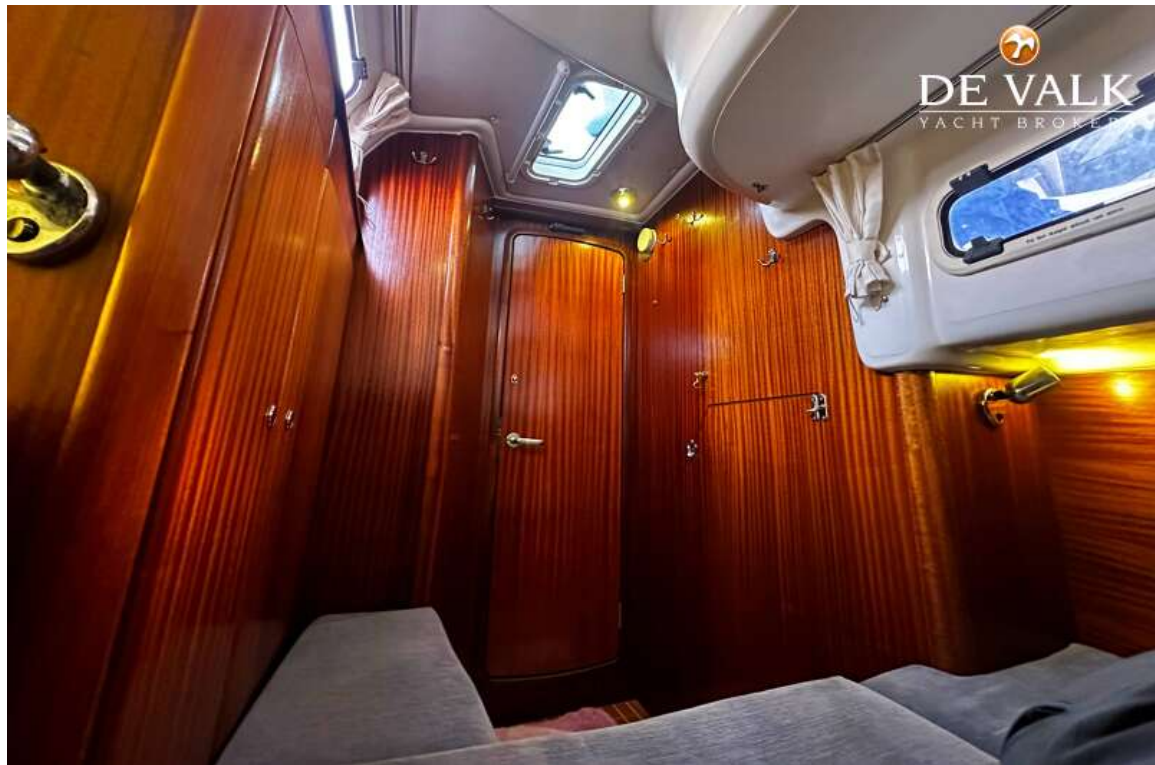


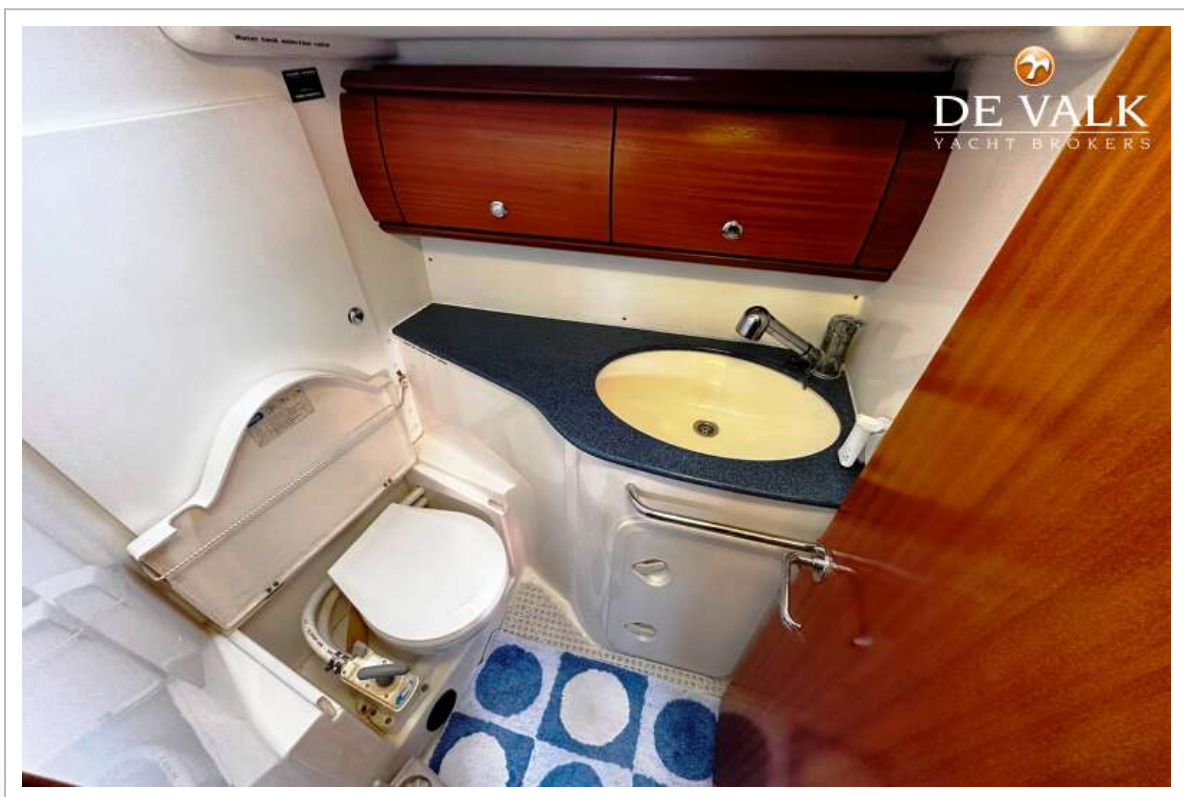
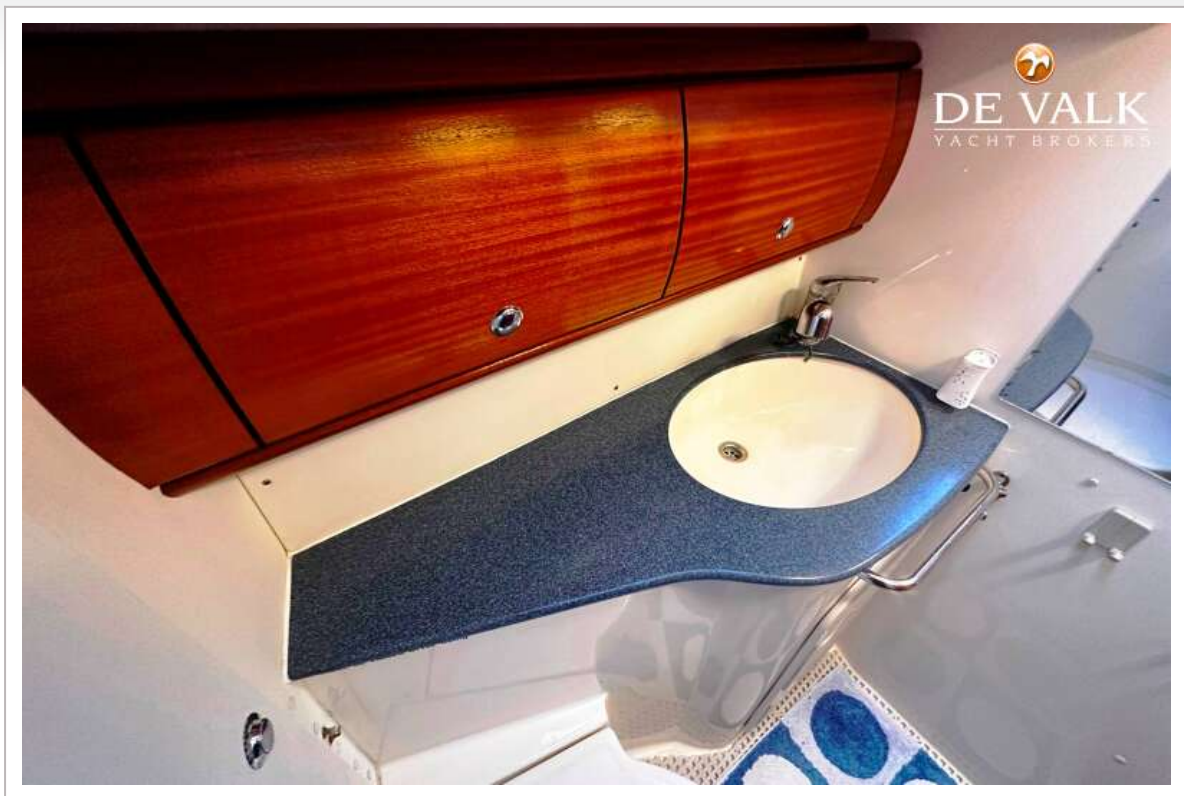


BAVARIA 44-4

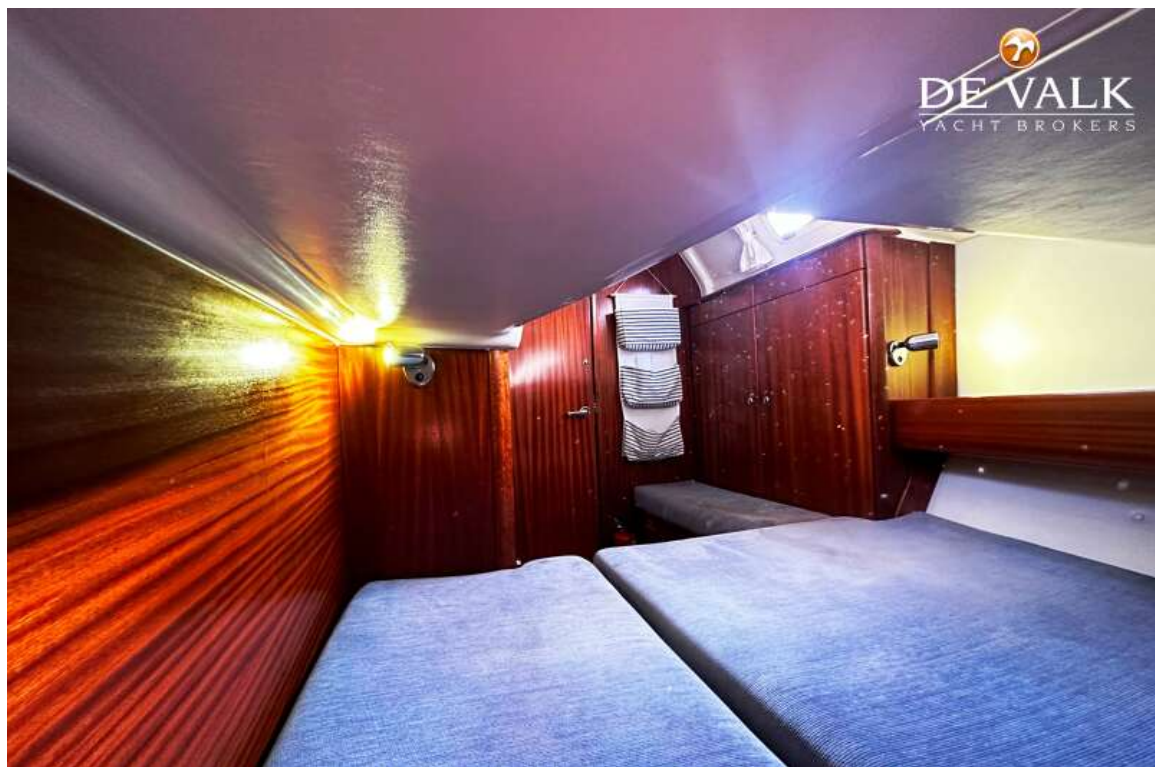


BAVARIA 44-4

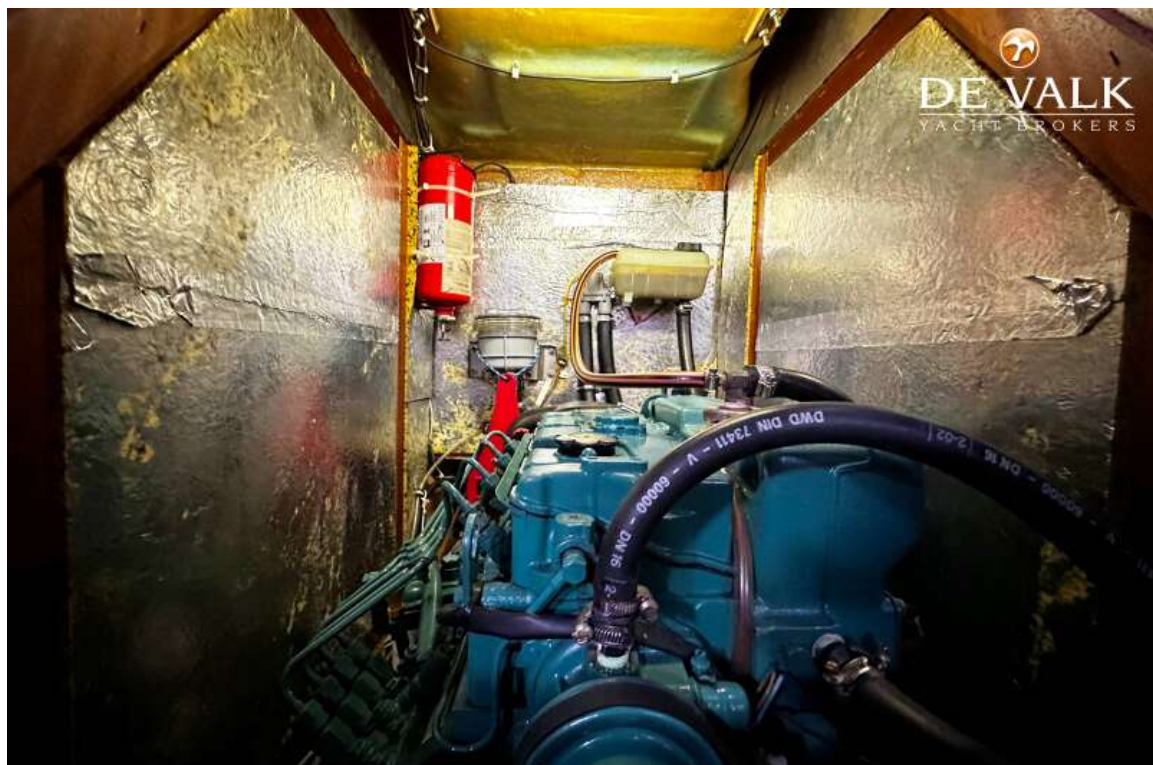
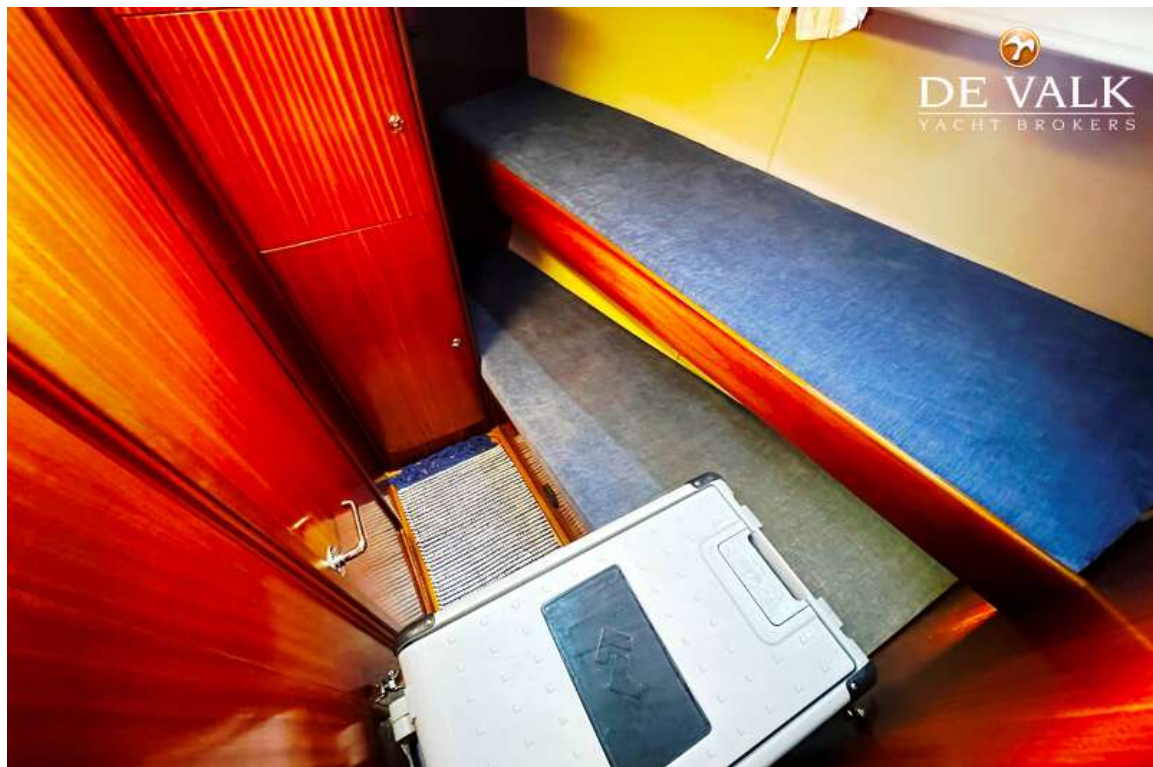




BAVARIA 44-4



BAVARIA 44-4



BAVARIA 44-4

