



JOHNSON 42



BROKER'S COMMENTS

The Johnson 42 'Aldente I' is way more than just a motorboat. Lying in the idyllic town of Pirovac in the Dalmatian waters, it is a great start for a lovely holiday. The large saloon with AC and place on both the aft deck and fly make sure you always have a convenient place to sit and relax. The 3 cabins with 2 bathrooms give all the guests their own space and privacy. The Johnson 42 will be sold through an online auction from 31-10 till 07-11, more information can be found on <https://bit.ly/Johnson42>

Koen Mulder

SPECIFICATIONS

Dimensions	12.41 x 4.42 x 1.08 (m)	Builder	Johnson Yachts
Built	1993	Cabins	3
Material	GRP	Berths	6
Engine(s)	2 x Detroit 53 diesel	Hp/Kw	2 x 400.00 (hp), 294.40 (kw)
Asking price	sold (VAT)	Lying	elsewhere / Not at sales office

CONTACT

Sales office	De Valk Dalmatia	Telephone	0031 653 299 244
Address	Ul. Velimira Skorpika 22000 Sibenik HR	E-mail	dalmatia@devalk.nl

DISCLAIMER

These particulars are given in good faith as supplied but cannot be guaranteed.



GENERAL

Model	JOHNSON 42
Type	motor yacht
LOA (m)	12,41
Beam (m)	4,42
Draft (m)	1,08
Headroom (m)	2,00
Year built	1993
Launched	1994
Builder	Johnson Yachts
Country	Taiwan
Gross tonnage	21.17
Net tonnage	12.70
CE norm	NA
Hull material	GRP
Hull colour	blue
Hull shape	deep-V
Superstructure material	GRP
Rubbing strake	stainless steel
Deck material	GRP
Deck finish	non-skid moulded in
Superstructure deck finish	non-skid moulded in
Cockpit deck finish	non-skid moulded in
Antifouling (year)	2020
Window frame	stainless steel
Window material	glass
Deckhatch	yes
Portholes	stainless steel
Flybridge	yes
Flybridge cockpit cover	yes
Flybridge suncover	yes



Radar arch	non collapsible
Fuel tank (litre)	stainless steel 750
Fuel tank 2 (litre)	stainless steel 750
Level indicator (fuel tank)	yes
Freshwater tank (litre)	stainless steel 2x 400
Level indicator (freshwater)	yes
Blackwater tank (litre)	GRP 50
Blackwater tank extraction	deck extraction + pump
Wheel steering	hydraulic
Inside helm position	yes
Flybridge helm position	hydraulic

ACCOMMODATION

Cabins	3
Berths	6
Interior	maple
Floor	carpet
Aft deck	yes
Saloon	yes
Headroom saloon (m)	2
Air-conditioning	reverse cycle airco Cruisair
Dinette	yes
Sliding door to aft deck	yes
Galley	yes
Countertop	granite
Sink	Corian
Cooker	ceramic Topline
Microwave/oven combi	National Dimention 4
Fridge	Norcold
Freezer	Norcold
Hot water system	220V



Water pressure system	electrical
Coffee maker	yes
Owners cabin	double bed
Bed length (m)	2
Wardrobe	hanging and shelves
Bathroom	en suite
Toilet	en suite
Toilet system	vacuum
Wash basin	in the bathroom
Shower	en suite
Guest cabin 1	double bed Twin single /
Bed length (m)	1,90
Wardrobe	hanging and shelves
Bathroom	shared
Toilet	shared
Toilet system	vacuum
Wash basin	in the bathroom
Shower	shared
Guest cabin 2	bunk bed
Bed length (m)	1,95
Wardrobe	hanging and shelves
Bathroom	shared
Toilet	shared
Toilet system	vacuum
Wash basin	in the bathroom
Shower	shared
Washing machine	Candy
Central vacuum cleaner	yes
Flybridge	yes

MACHINERY



No of engines	2
Make	Detroit
Type	53
HP	400
kW	294.40
Fuel	diesel
Year installed	1993
Engine hours	1355
Engine cooling system	freshwater heat exchanger
Drive	shaft
Engine controls	electrical
Gearbox	hydraulic
Bowthruster	electric Sidepower
Sternthruster	electric Vetus (only on fly)
Propeller type	fixed
Propeller shaft material	stainless steel
Shaft lubrication	water
Bilge alarm	yes
Generator	wet exhaust Onan
Running hours generator	820
Batteries	yes
Battery charger/inverter	NewMar 220/40
Shorepower	with cable
Trimtabs	Bennett

NAVIGATION

Compass	Ritchie
Compass on flybridge	yes
Depth sounder/log	Autohelm tridata
Windset	Raymarine st 40
VHF	Sailor



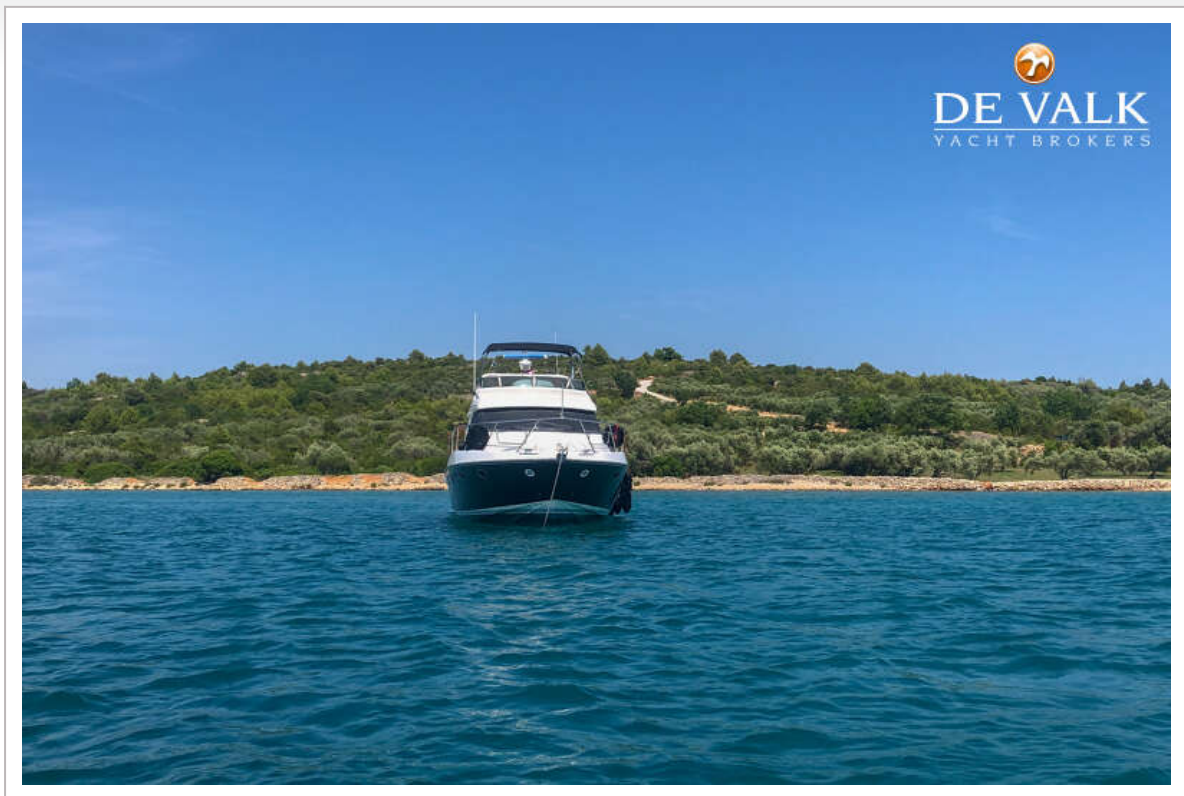
Autopilot	Robertson
Rudder angle indicator	Robertson
Radar	Furuno
Navigation lights	yes
Searchlight	Ray-Line

EQUIPMENT

Bimini	yes
Window cover	yes
Cockpit cushions	yes
Cockpit table	yes
Bathing platform	Sinkable
Transom door	yes
Gangway	With Quick remote
Deck shower	yes
Anchor	Pool
Anchor chain	yes
Windlass	electrical Maxwell
Deck wash	yes
Sea railing	stainless steel
Grab rail (superstructure)	stainless steel
Horn	yes
Fenders	yes
Mooring lines	yes
TV	Samsung
TV receiver	Samsung
Radio-cd player	Sony
Speakers in salon	yes
Clock - barometer	yes



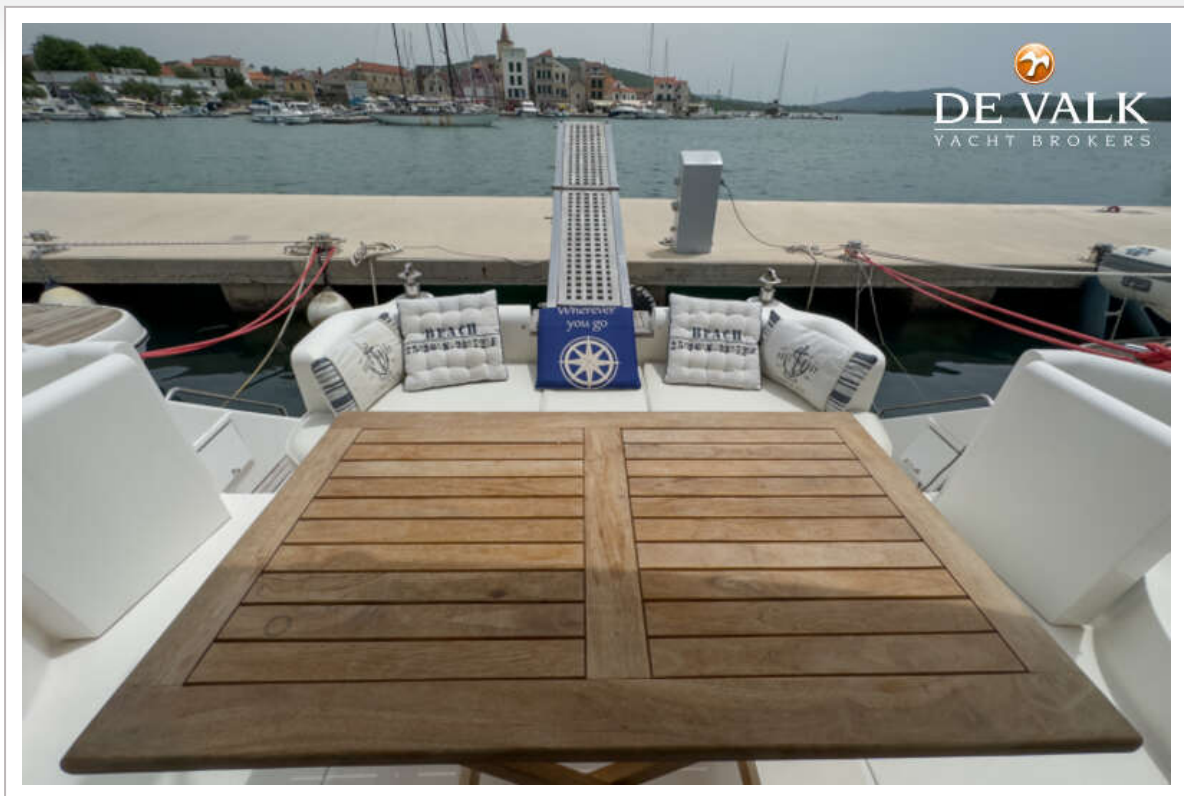




JOHNSON 42



JOHNSON 42



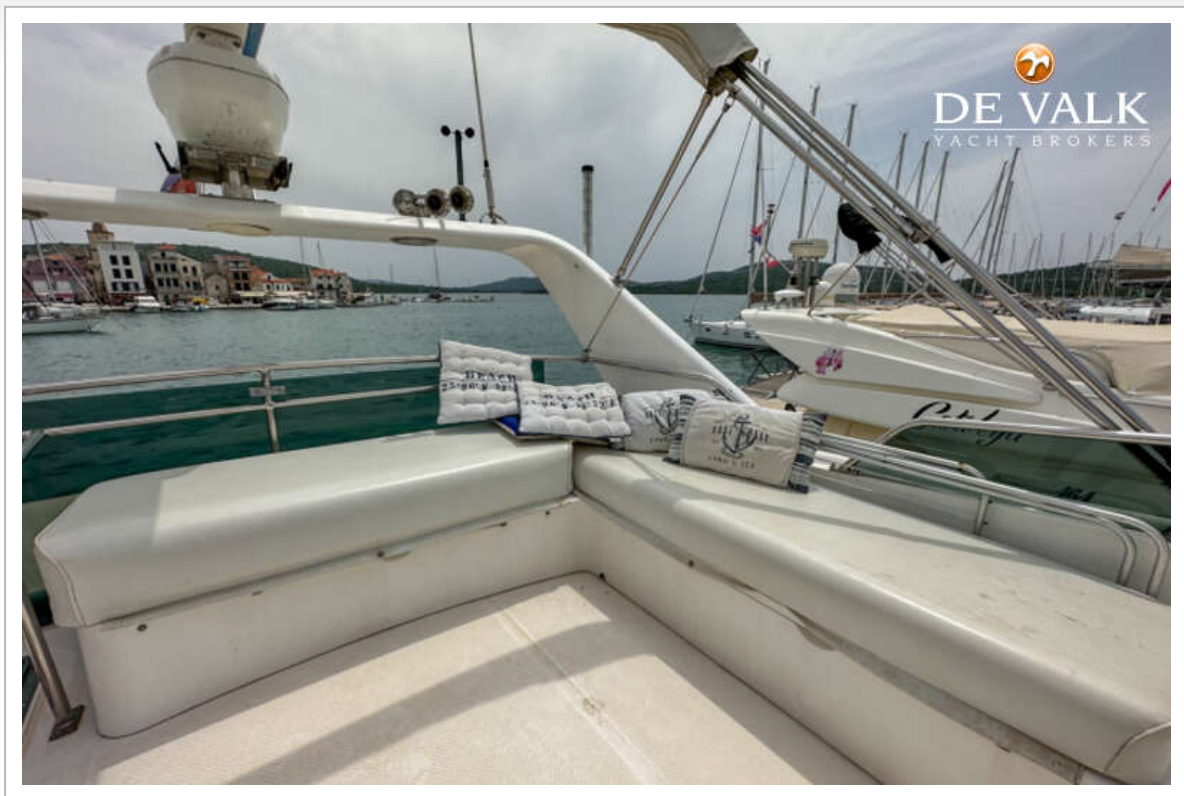
JOHNSON 42



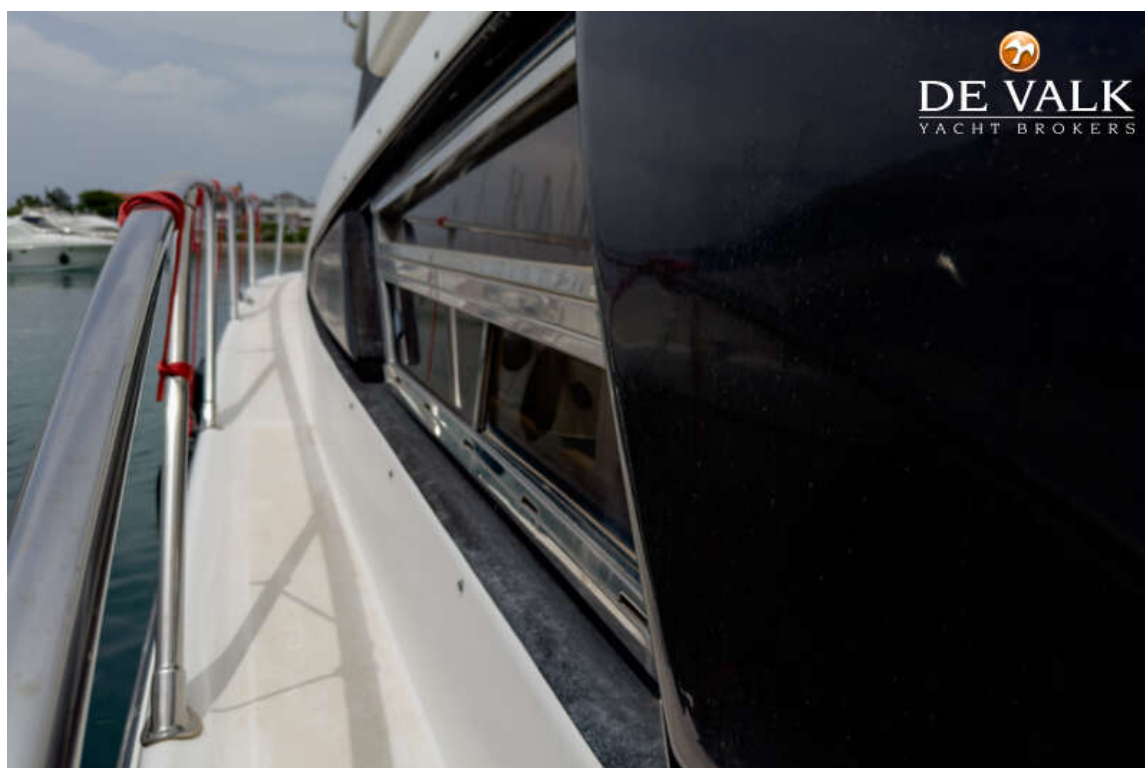
JOHNSON 42



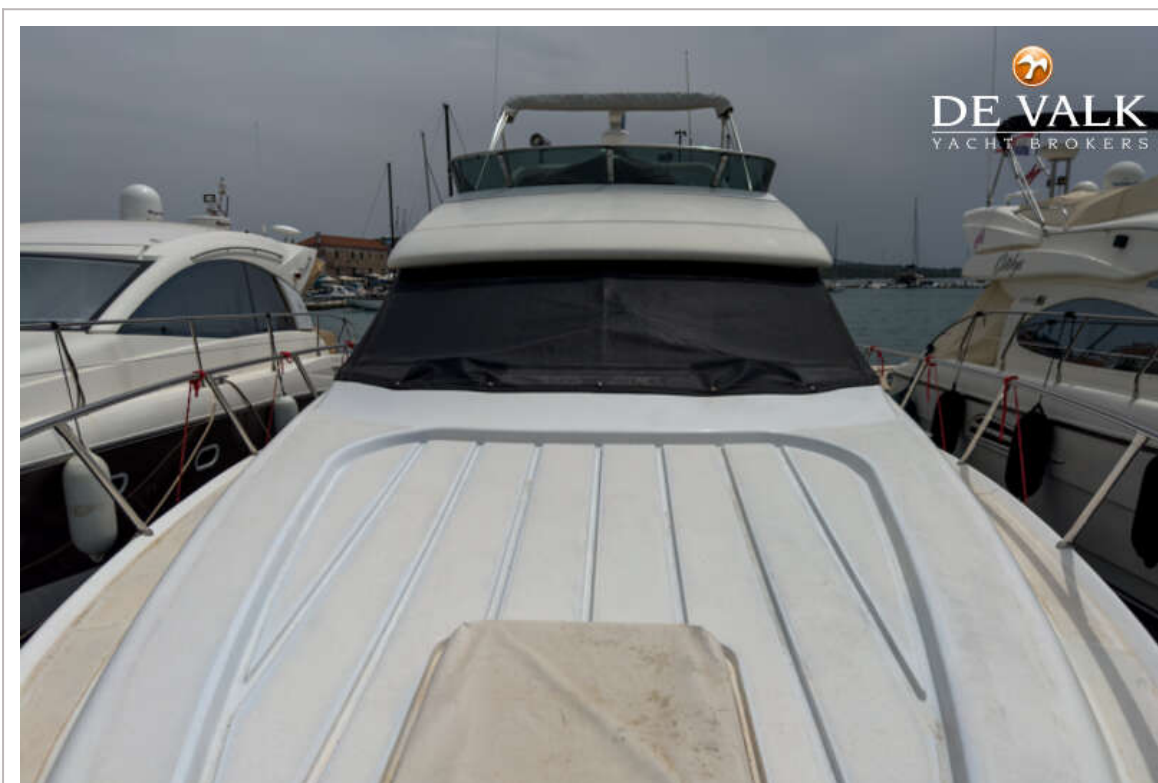
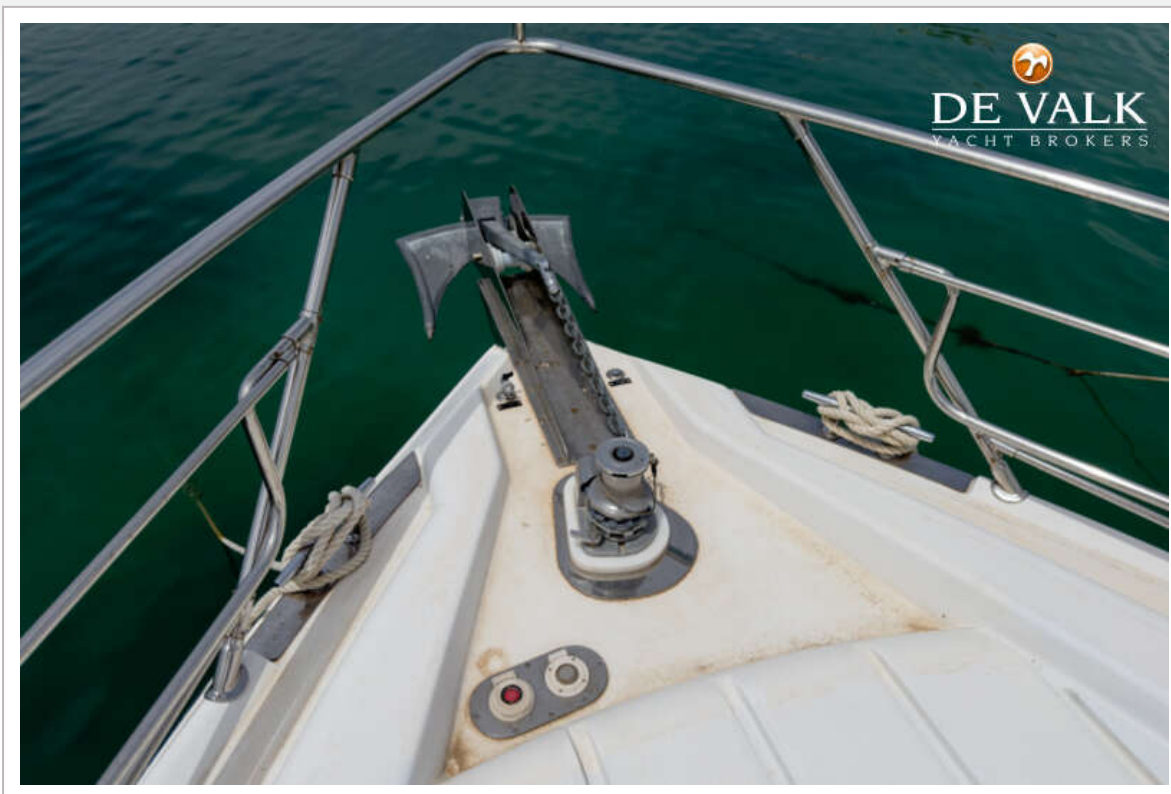
JOHNSON 42



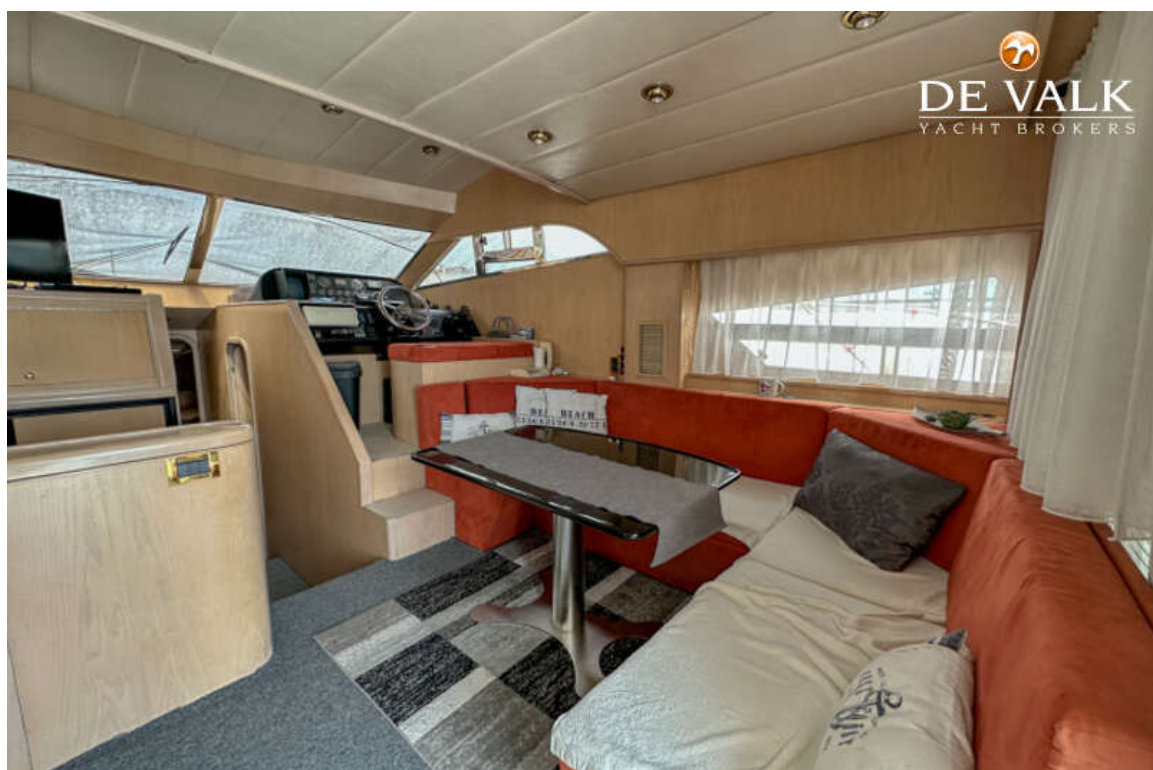
JOHNSON 42



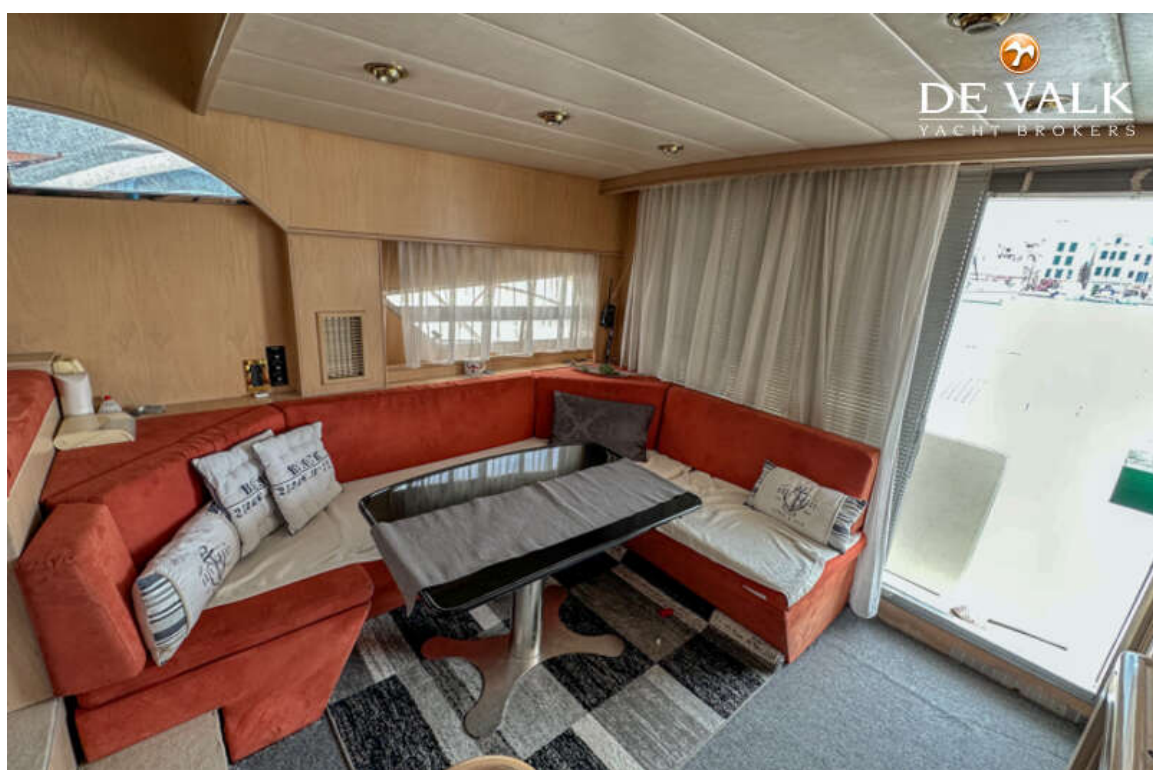
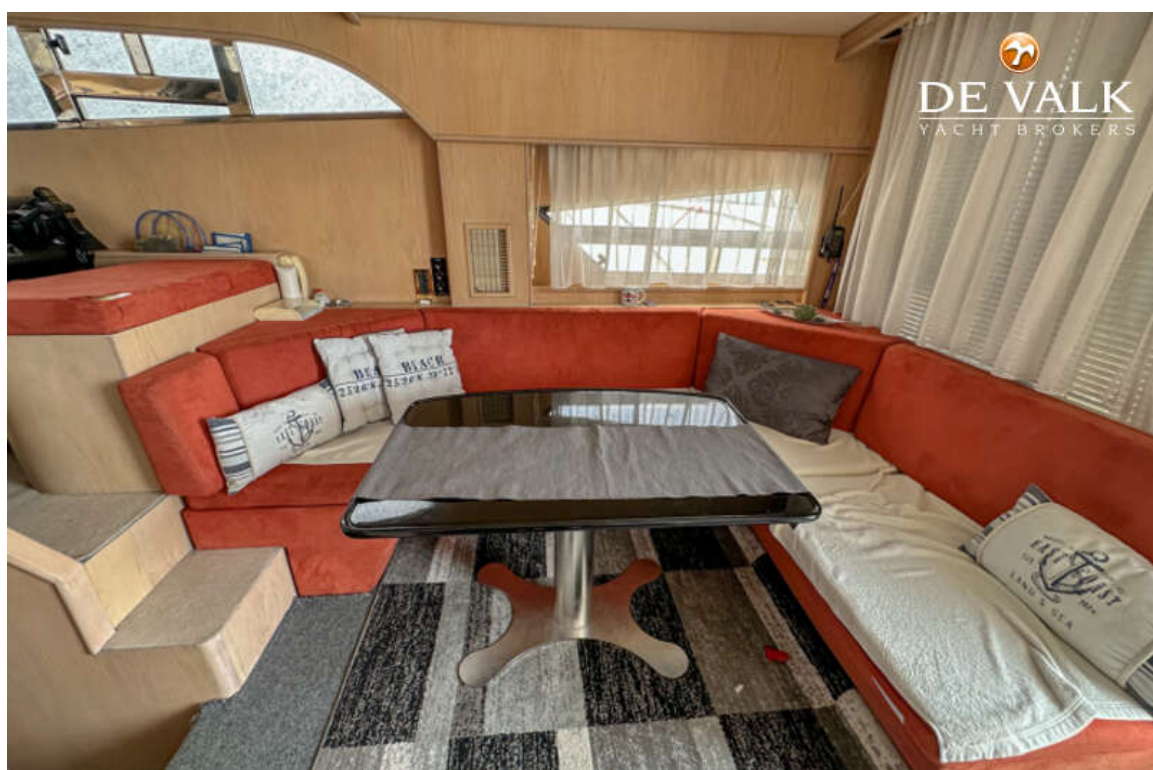
JOHNSON 42



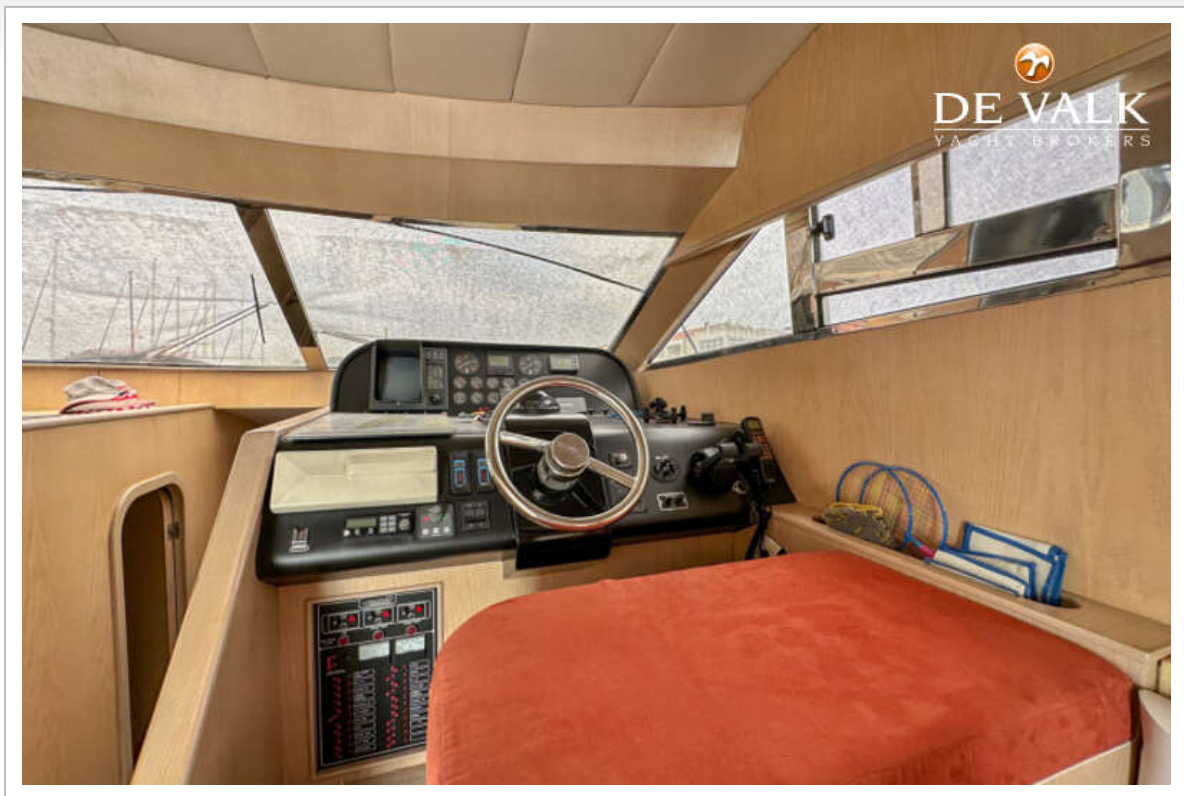
JOHNSON 42



JOHNSON 42



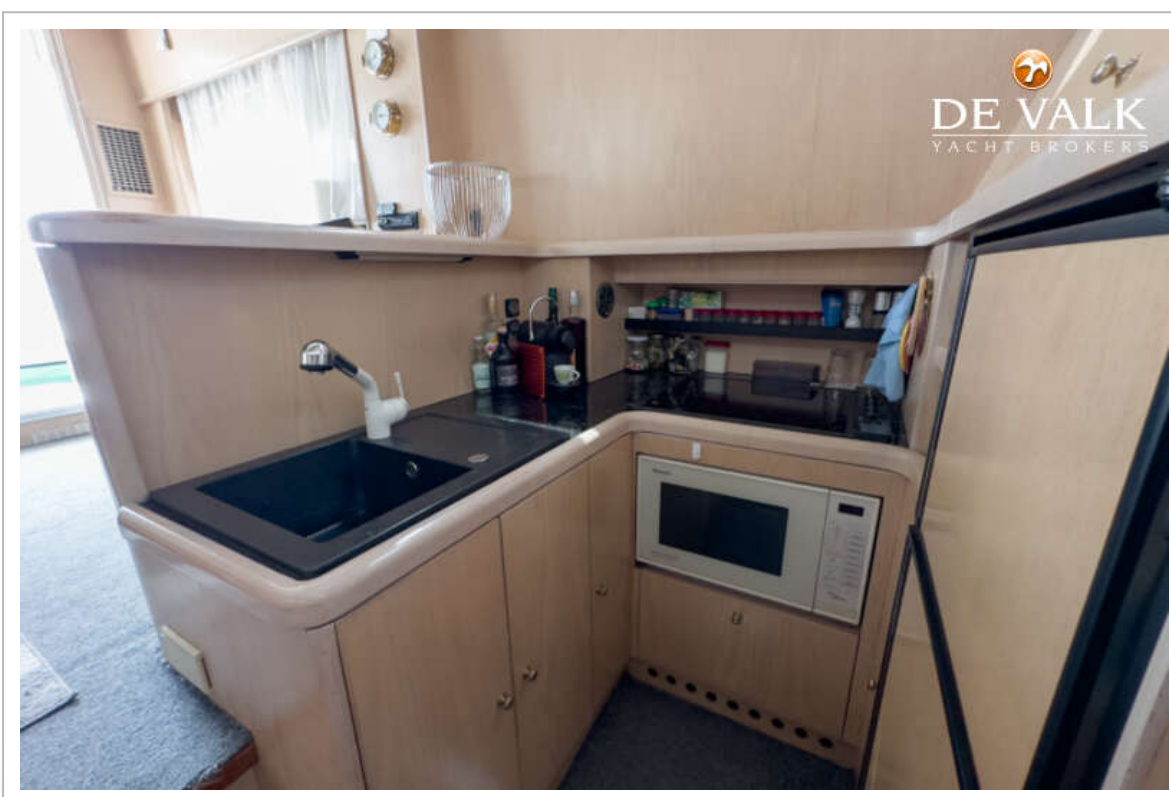
JOHNSON 42



JOHNSON 42

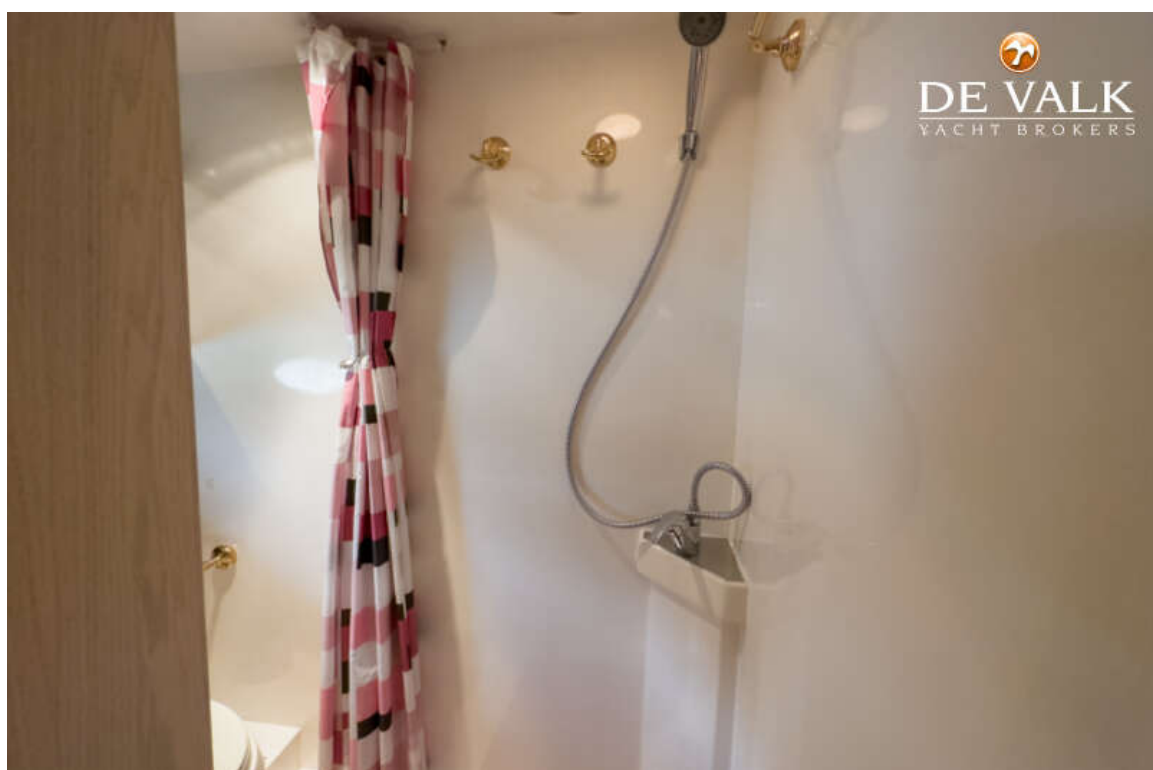


JOHNSON 42

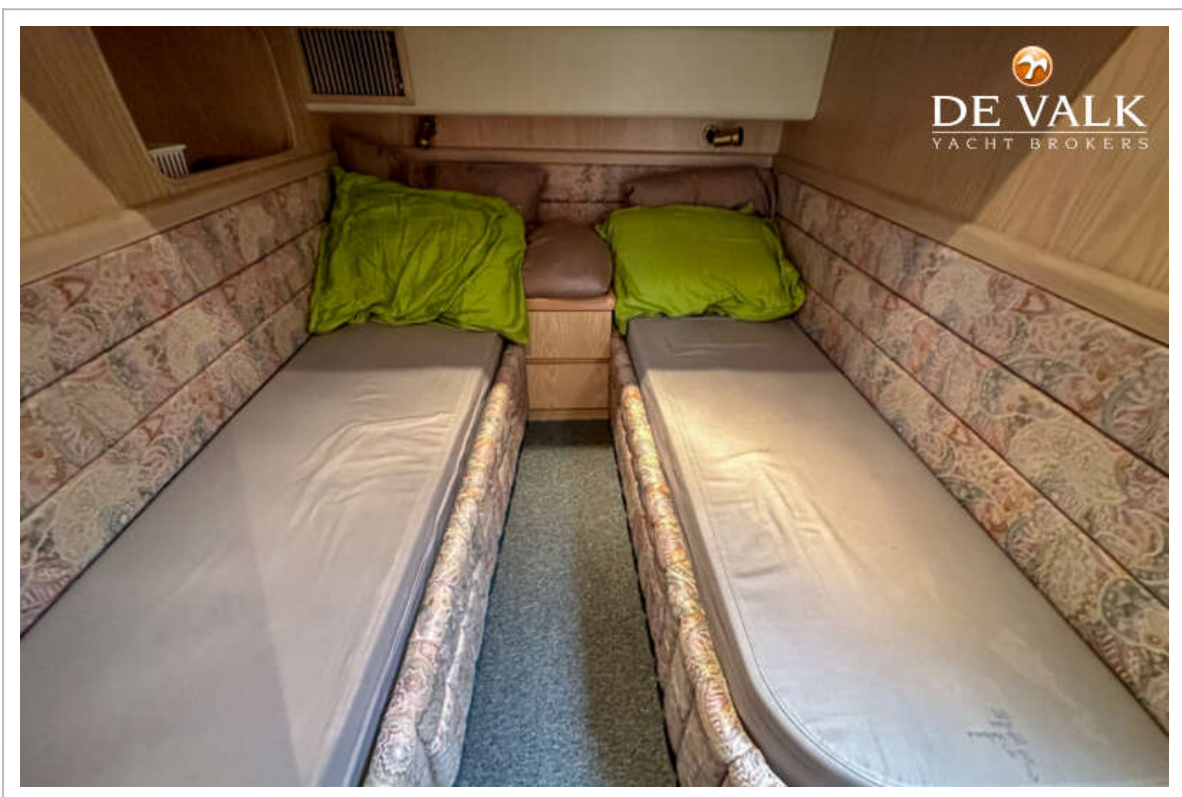


JOHNSON 42





JOHNSON 42



JOHNSON 42



