



DE VALK  
YACHT BROKERS



## ALLIAURA PRIVILEGE 435



DE VALK  
YACHT BROKERS

# ALLIAURA PRIVILEGE 435

## BROKER'S COMMENTS

A strong, seaworthy and remarkably well-finished catamaran: this sums up the Privilège 435. The Privilège touch is the famous central 'spur', a kind of third hull which doesn't touch the water. It is clearly visible from the deck, significantly reducing the area of the trampolines. A clever device which allows much more convincing comfort, than on the classic cats. This Privilège 435 Easy Cruise model with longer sugar scoops offers 4 spacious cabins. It satisfies both demanding sailors and those who love fine prestigious units.

*Oliver Stehula*

## SPECIFICATIONS

<b>Dimensions</b>	13.42 x 7.11 x 1.35 (m)	<b>Builder</b>	Alliaura Marine
<b>Built</b>	2001	<b>Cabins</b>	4
<b>Material</b>	GRP	<b>Berths</b>	4
<b>Engine(s)</b>	2 x Yanmar 4JH4-TCE diesel	<b>Hp/Kw</b>	2 x 75.00 (hp), 55.20 (kw)
<b>Asking price</b>	€ 299.000 (VAT Paid)	<b>Lying</b>	contact Palma

## CONTACT

<b>Sales office</b>	De Valk Palma	<b>Telephone</b>	+34 971 40 29 11
<b>Address</b>	Port. Cala Nova, Avda. Joan Miro, 327 07015 Palma de Mallorca ES	<b>E-mail</b>	palma@devalk.nl

## DISCLAIMER

These particulars are given in good faith as supplied but cannot be guaranteed.



# ALLIAURA PRIVILEGE 435

## GENERAL

<b>Model</b>	ALLIAURA PRIVILEGE 435
<b>Type</b>	catamaran sailing yacht
<b>LOA (m)</b>	13,42
<b>LWL (m)</b>	12,57
<b>Beam (m)</b>	7,11
<b>Draft (m)</b>	1,35
<b>Air draft (m)</b>	17,07
<b>Headroom (m)</b>	2,20
<b>Year built</b>	2001
<b>Launched</b>	2001
<b>Builder</b>	Alliaura Marine
<b>Country</b>	France
<b>Designer</b>	Marc Lombard
<b>Displacement (t)</b>	8,3
<b>CE norm</b>	NA
<b>Hull material</b>	GRP
<b>Hull colour</b>	White
<b>Hull shape</b>	multi hard chine
<b>Keel type</b>	Fixed keel
<b>Deck material</b>	GRP
<b>Antifouling (year)</b>	May 2024
<b>Fuel tank (litre)</b>	aluminium 397 l
<b>Level indicator (fuel tank)</b>	With gauge
<b>Freshwater tank (litre)</b>	663 l
<b>Level indicator (freshwater)</b>	With gauge
<b>Blackwater tank (litre)</b>	2 x 110 l
<b>Level indicator (blackwater)</b>	With gauge
<b>Blackwater tank extraction</b>	deck extraction
<b>Wheel steering</b>	mechanical
<b>Outside helm position</b>	cable steering



Emergency tiller yes

## ACCOMMODATION

Cabins	4
Berths	4
Interior	cherry
Saloon	yes
Headroom saloon (m)	2,00 m
Heating	Marine Air Systems Reversible Air- Condition
Air-conditioning	reverse cycle airco New in 2018
Chart table	yes
Sink	Double sink, stainless steel
Cooker	calor gas 3 burner
Oven	ENO
Gas alarm	yes
Microwave	yes
Fridge	160 l
Freezer	130 l
Hot water system	220V + engine 40 l
Water pressure system	electrical
Coffee maker	yes
Guest cabin 1	double bed
Bed length (m)	2,00 m x 1,60 m
Wardrobe	hanging/drawers/shelves
Bathroom	en suite
Toilet	en suite
Toilet system	electric
Wash basin	in the bathroom
Shower	en suite
Guest cabin 2	double bed
Bed length (m)	2,00 m x 1,60 m



<b>Wardrobe</b>	hanging/drawers/shelves
<b>Bathroom</b>	separate
<b>Toilet</b>	shared
<b>Toilet system</b>	electric
<b>Wash basin</b>	in the bathroom
<b>Shower</b>	separate
<b>Guest cabin 3</b>	double bed
<b>Bed length (m)</b>	2,00 m x 1,60 m
<b>Wardrobe</b>	hanging/drawers/shelves
<b>Bathroom</b>	En suite
<b>Toilet</b>	en suite
<b>Toilet system</b>	electric
<b>Wash basin</b>	in the bathroom
<b>Shower</b>	en suite
<b>Guest cabin 4</b>	double bed
<b>Bed length (m)</b>	2,00 x 1,60 m
<b>Wardrobe</b>	hanging/drawers/shelves
<b>Bathroom</b>	yes
<b>Toilet</b>	shared
<b>Toilet system</b>	electric
<b>Wash basin</b>	in the bathroom
<b>Shower</b>	shared

## MACHINERY

<b>No of engines</b>	2
<b>Make</b>	Yanmar
<b>Type</b>	4JH4-TCE
<b>HP</b>	75
<b>kW</b>	55.20
<b>Fuel</b>	diesel
<b>Year installed</b>	2012



# ALLIAURA PRIVILEGE 435

Maximum speed (kn)	9,0
Cruising speed (kn)	8,5
Engine hours	540
Engine cooling system	freshwater heat exchanger
Drive	sail-drive
Engine controls	electrical
Secondary engine	diesel
Engine controls	electrical
Propeller type	fixed
Propeller blades	Three
Manual bilge pump	yes
Electric bilge pump	yes
Bilge alarm	yes
Electrical installation	yes
Generator	silent separator Sole 7gsc / 2016 with 6,6 kw and separate 100 l Diesel tank.
Start battery	1 x Victron AGM Deep Cycle 130 Ah, new in 06/21
Service battery	6 x Victron AGM Deep Cycle 130 Ah, new in 06/21
Generator battery	1 x Victron AGM Deep Cycle 130 Ah, new in 06/21
Battery monitor	yes
Battery charger	1 x V. E. Pallas 12V/ 50 Ah, 1 x Quick SBC 1200 NRG, 12V/100 Ah
Inverter	Victron Energy Atlas 12V/ 1600 Watt
Solar panel	New in 2025
Shorepower	with cable
Extra info	1 x Solarlader Victron Energy MPPT 75/15

## NAVIGATION

Compass	yes
Depth sounder	Raytheon ST60
Log	Raytheon ST60
Windset	Raytheon ST60



VHF	2x Shipmate RS 8400
VHF handheld	I- COM IC-M33
Autopilot	Raytheon ST7000Plus
GPS	yes
Plotter	yes
Radar/GPS/plotter	Raymarine RL70C intern Raymarine 10" colour extern
Navtex	yes
EPIRB	ACR
Navigation lights	yes

## EQUIPMENT

Sprayhood	yes
Bimini	New in 2025
Window cover	yes
Cockpit cushions	yes
Cockpit table	yes
Bathing platform	One in each hull
Boarding ladder	Two
Gangway	Aluminium
Deck shower	yes
Anchor	CQR Plough 27kg
Anchor chain	75m
Dinghy	rigid inflatable Apex A-11, 3,30
Outboard	Electric Torquedo travel
Davits	stainless steel
Davits controls	manual
Sea railing	wire
Life raft	yes
Life raft (pers)	valise (or bag) 8 persons
Lifejackets	yes
Lifebuoy	yes



<b>Binocular</b>	yes
<b>Fenders</b>	10
<b>Mooring lines</b>	yes
<b>Radio-cd player</b>	yes
<b>Cockpit speakers</b>	yes
<b>Speakers in salon</b>	yes
<b>Fire extinguisher</b>	yes
<b>Extinguisher in engine room</b>	yes
<b>Extra info</b>	All trough- hulls and ball fittings new in 2017.
<b>Extra info</b>	Polish of the hulls May 2024
<b>Extra info</b>	Engine room cleaning May 2024

## RIGGING

<b>Rigging</b>	Divided rigging 8/9
<b>Standing rigging</b>	wire Replaced 2017, last check 2022
<b>Material mast</b>	aluminium
<b>Spreaders</b>	1 set
<b>Mainsail cover</b>	yes
<b>Fully battened mainsail</b>	Elvstrom Hydranet 480, 2 reefs, new in 2011
<b>Genoa</b>	Elvstrom, Hydranet 480, UV- Protection, new in 2011
<b>Genoa furler</b>	yes
<b>Gennaker</b>	150 m2
<b>Stormjib</b>	With seperate sheets
<b>Reefing System</b>	quick-one-line-reefing
<b>Primary sheet winch</b>	yes
<b>Secondary sheet winch</b>	yes
<b>Genoa sheetwinches</b>	Electric
<b>Halyard winches</b>	yes
<b>Gennaker pole</b>	aluminium

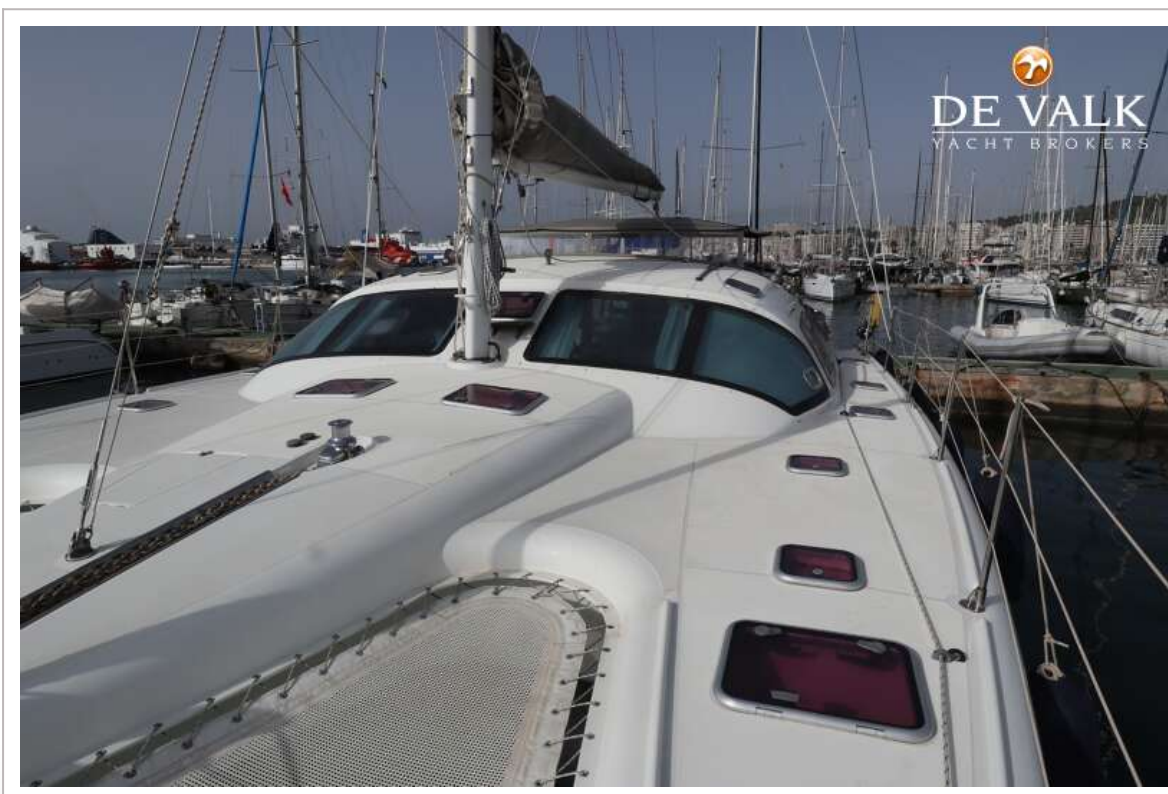




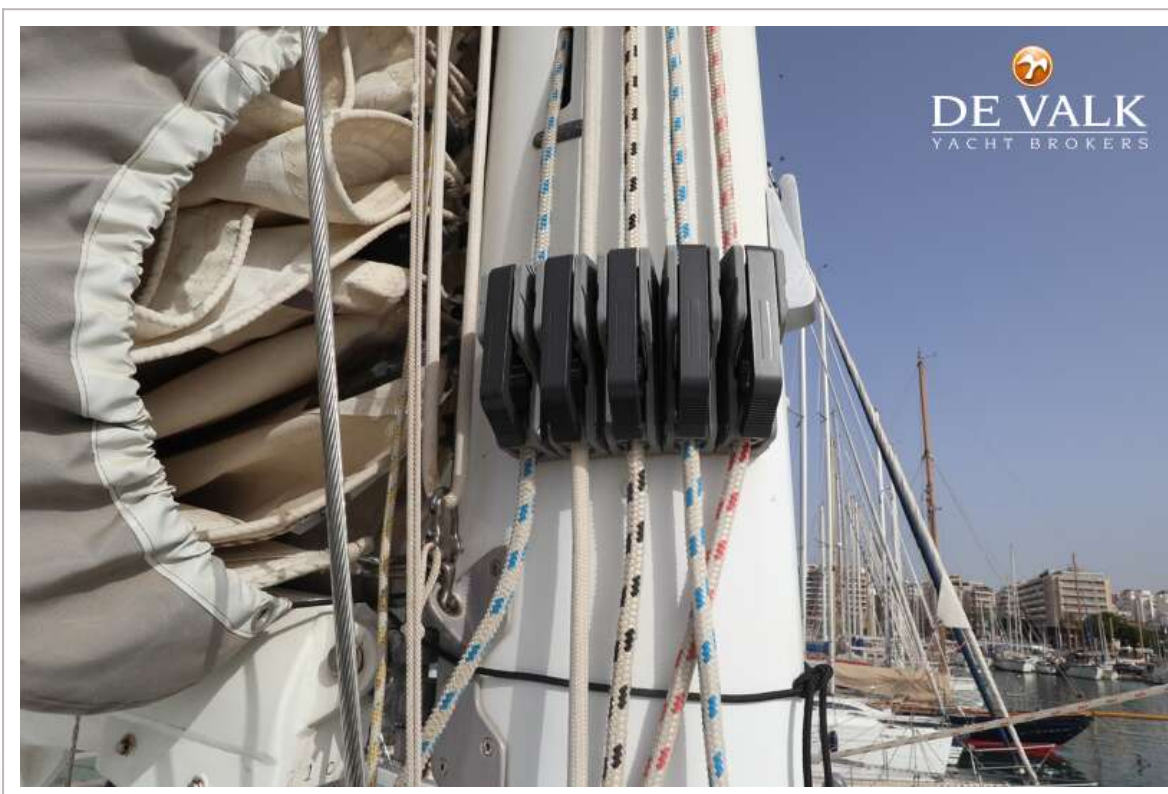
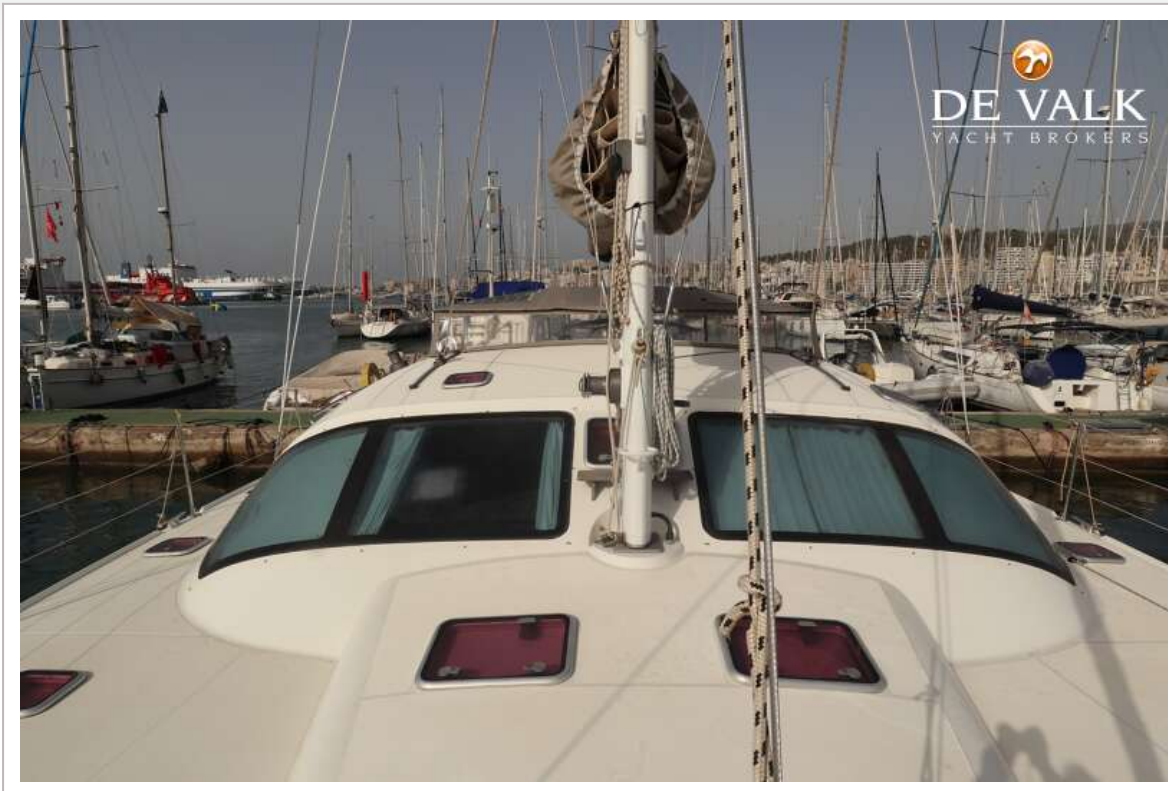
# ALLIAURA PRIVILEGE 435



# ALLIAURA PRIVILEGE 435



# ALLIAURA PRIVILEGE 435



# ALLIAURA PRIVILEGE 435



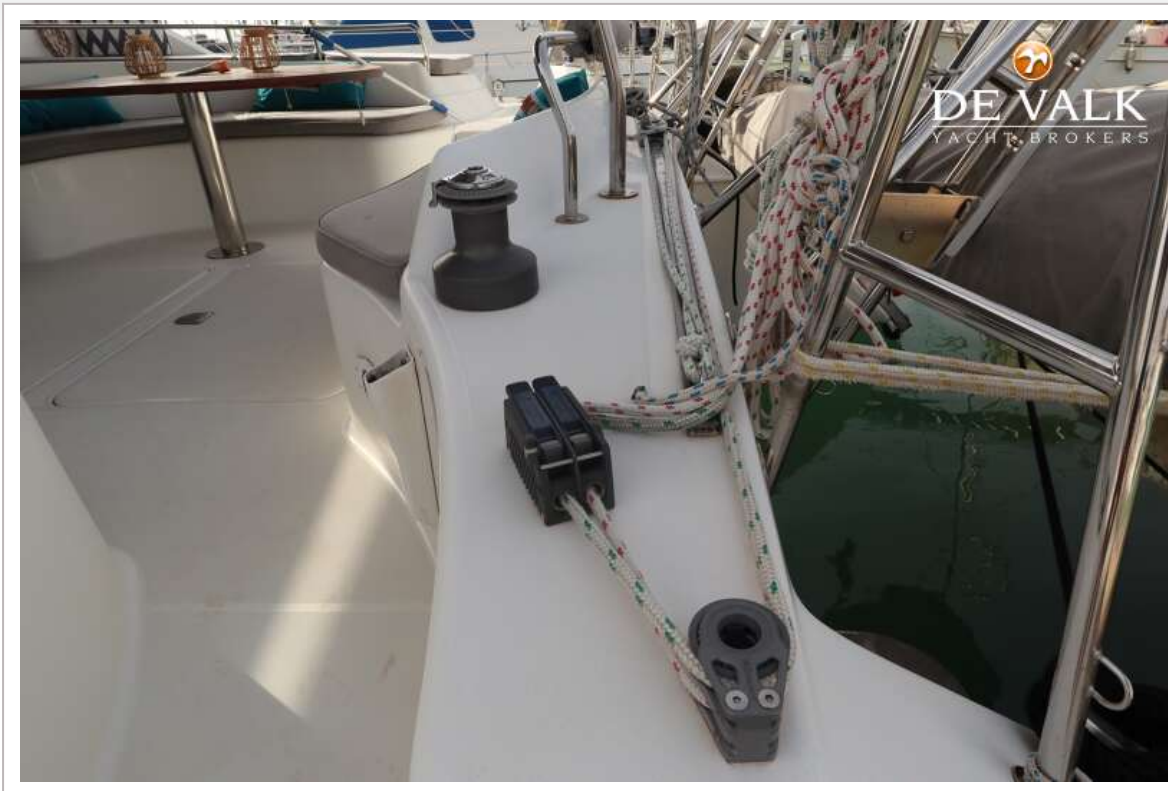
# ALLIAURA PRIVILEGE 435



# ALLIAURA PRIVILEGE 435



# ALLIAURA PRIVILEGE 435

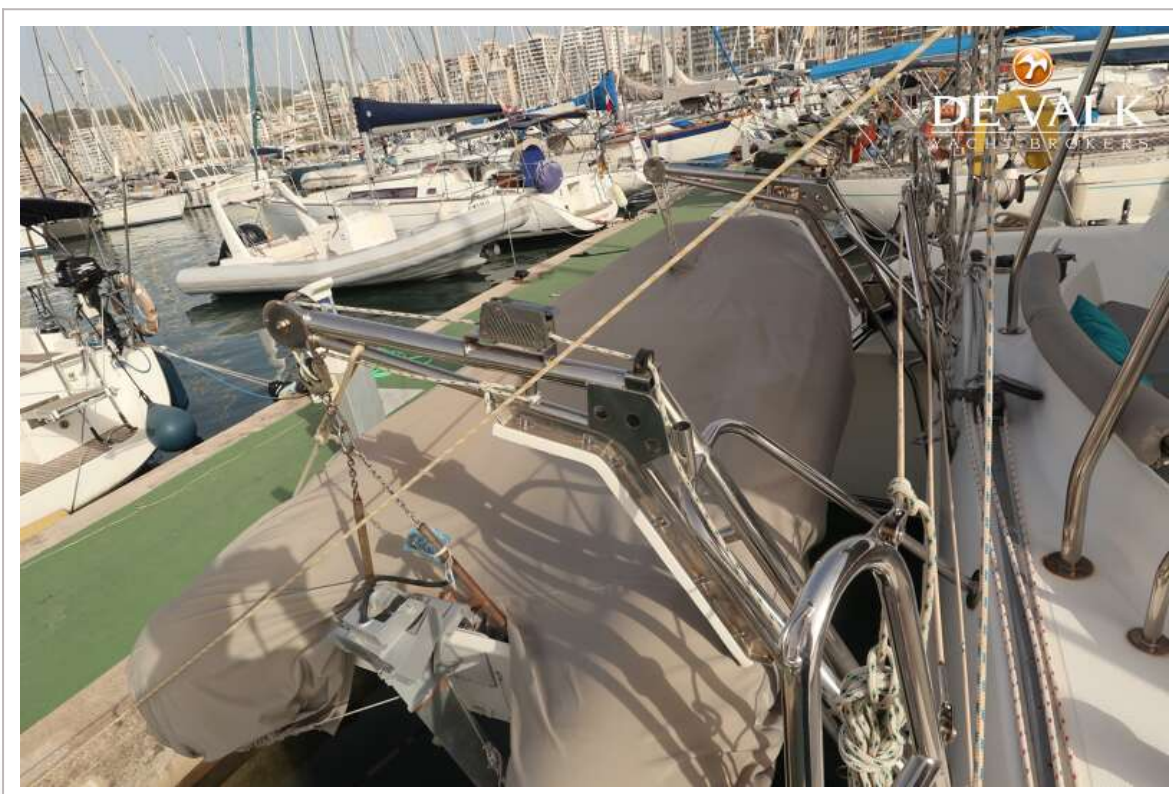


# ALLIAURA PRIVILEGE 435





# ALLIAURA PRIVILEGE 435



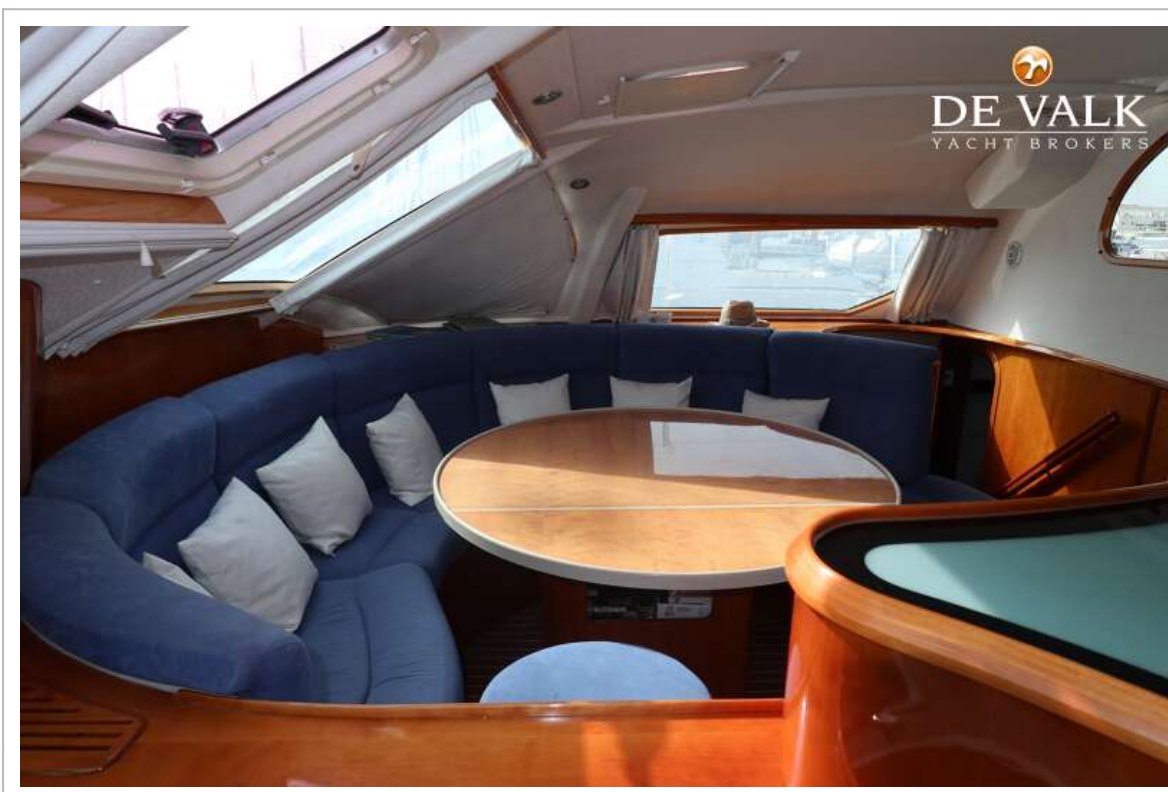
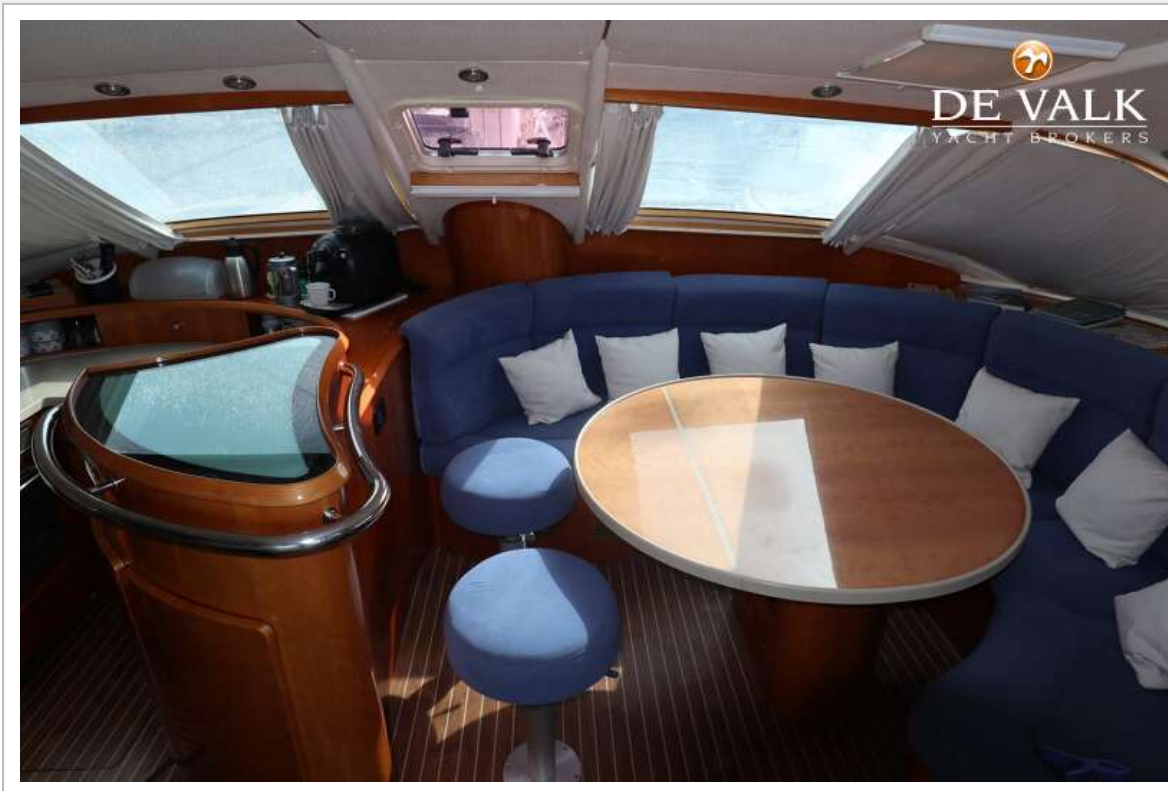
# ALLIAURA PRIVILEGE 435



# ALLIAURA PRIVILEGE 435



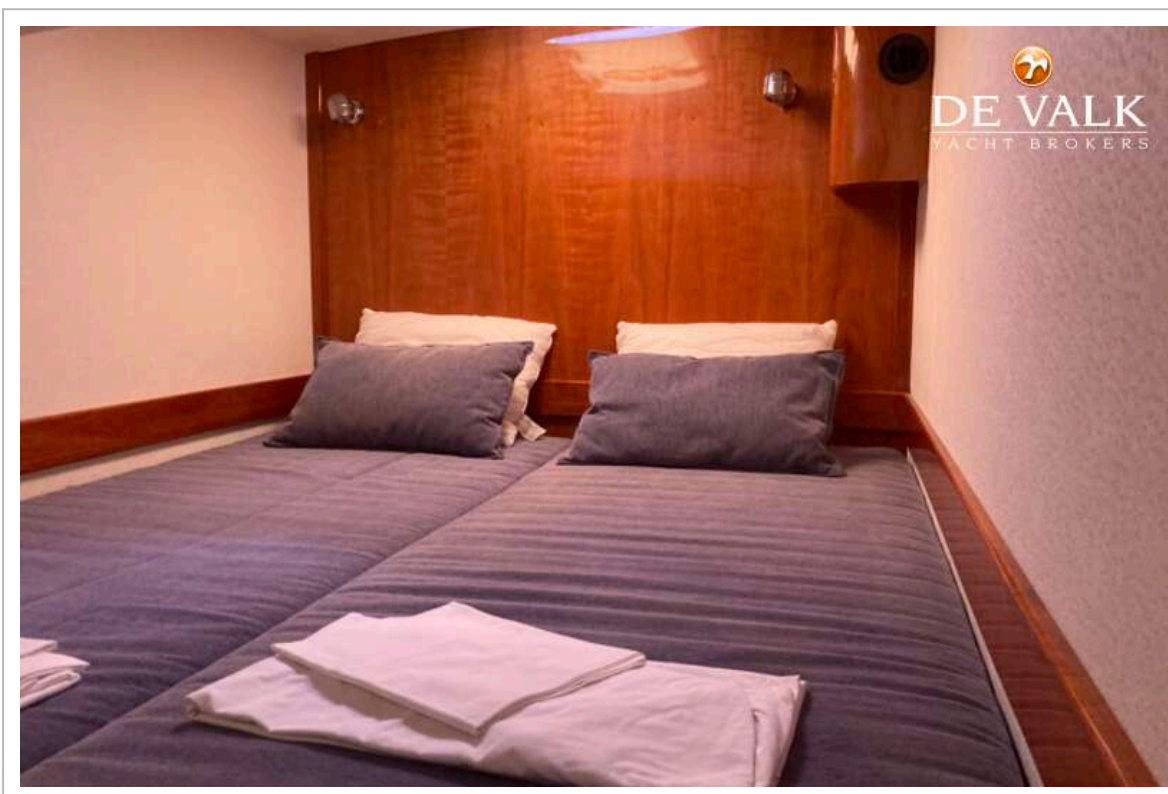
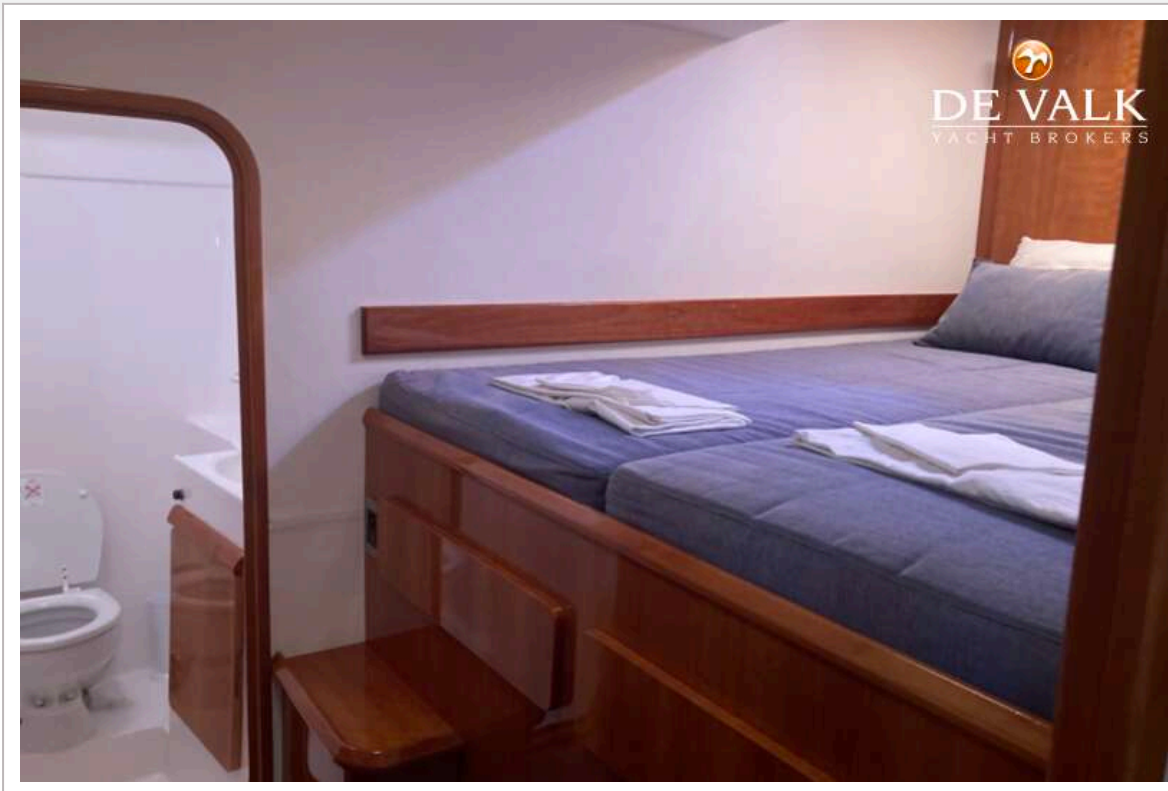
# ALLIAURA PRIVILEGE 435



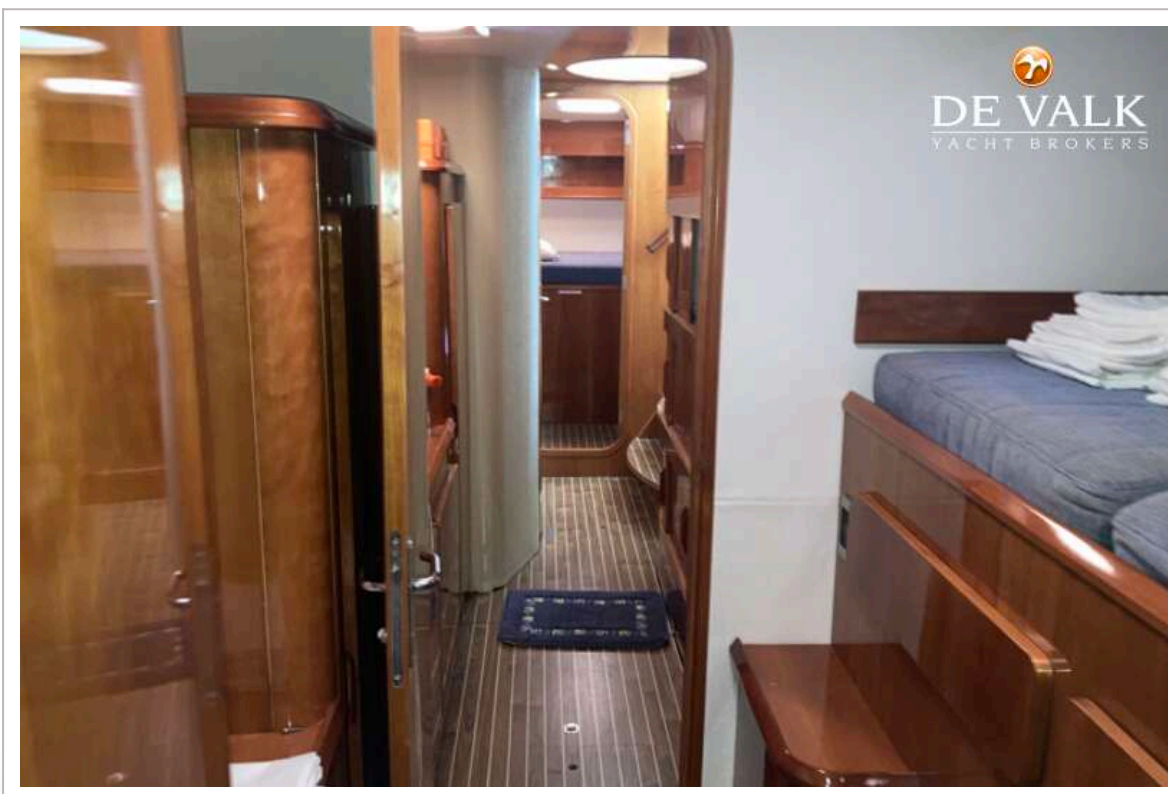
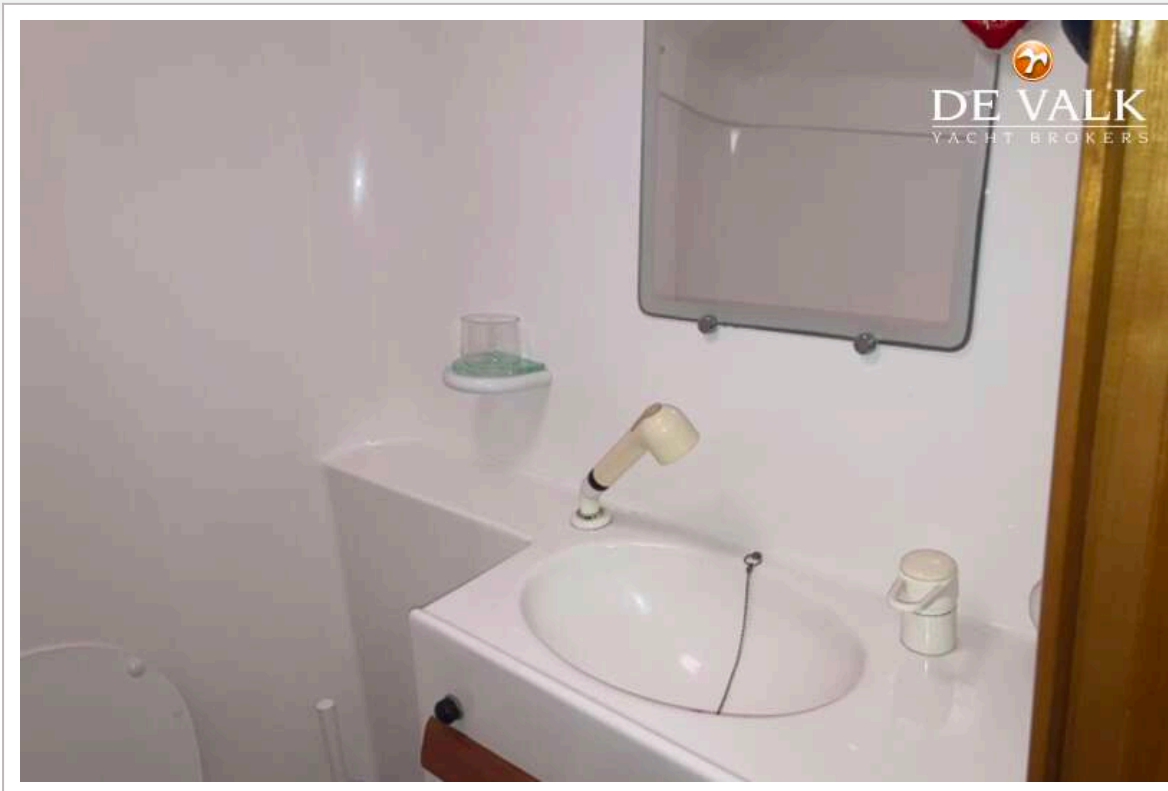
# ALLIAURA PRIVILEGE 435



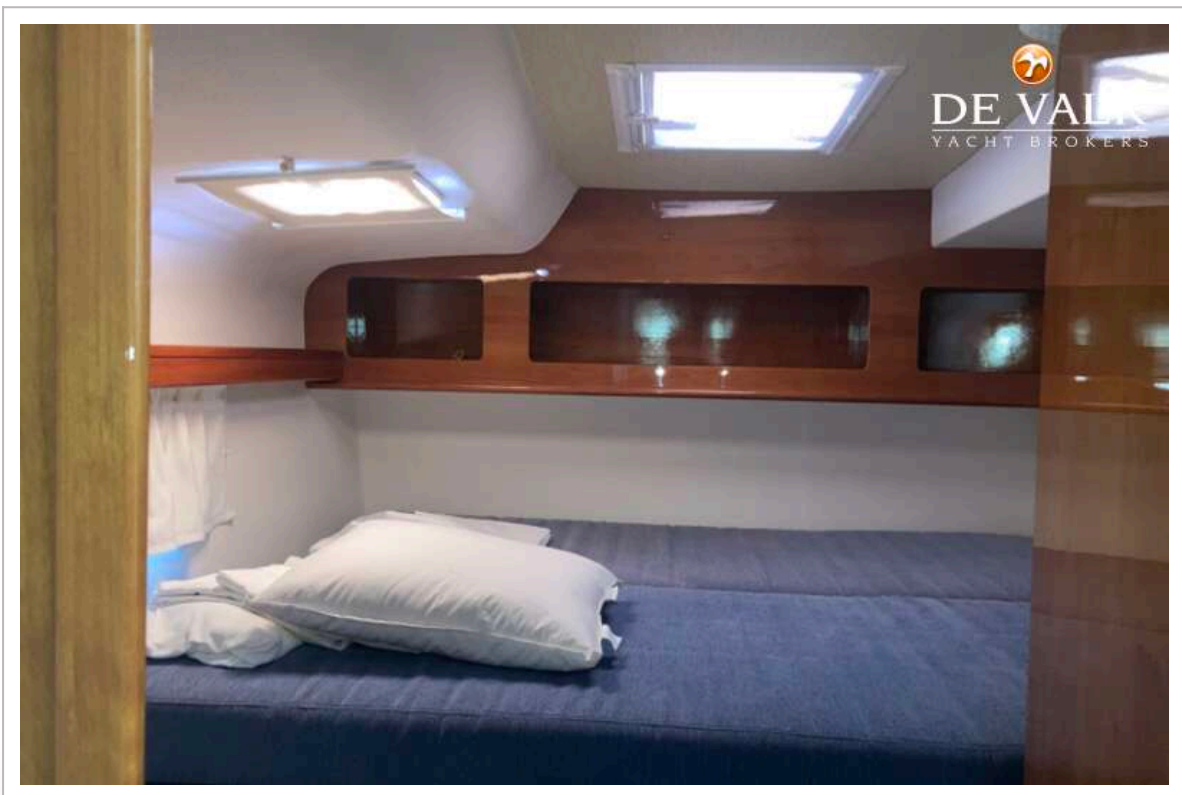
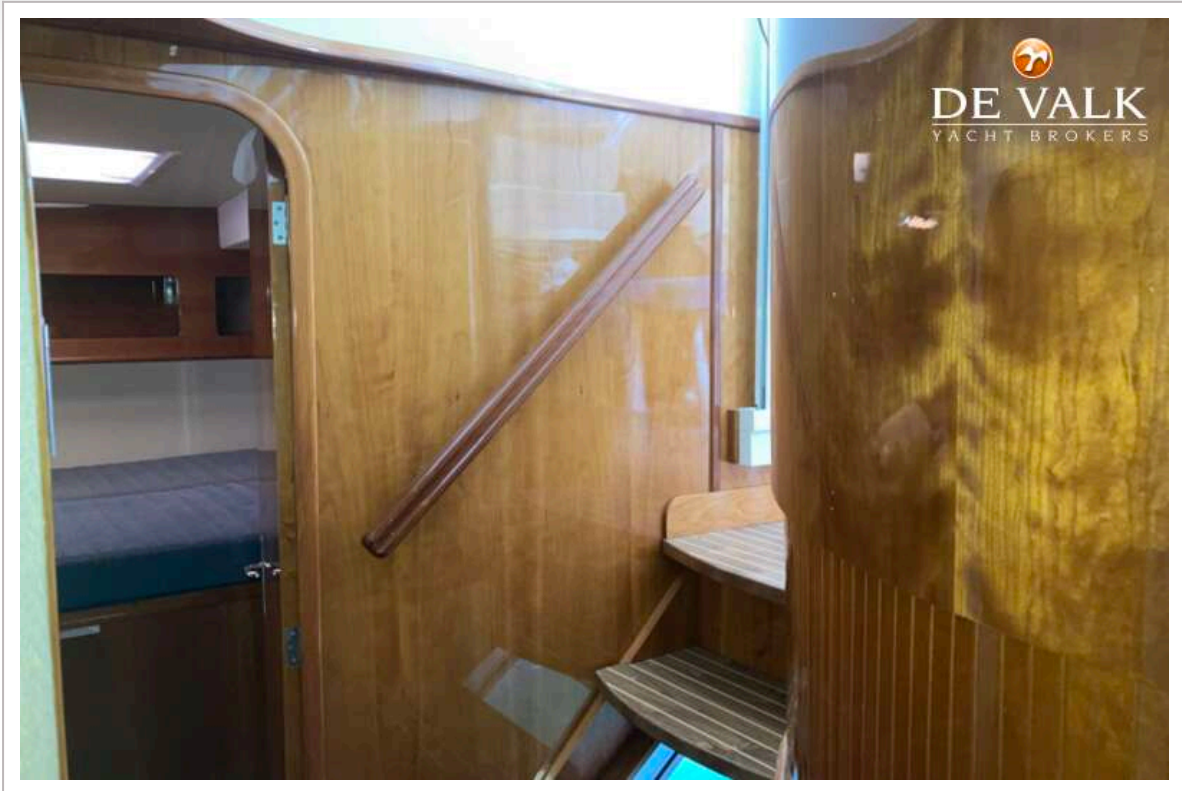
# ALLIAURA PRIVILEGE 435



# ALLIAURA PRIVILEGE 435



# ALLIAURA PRIVILEGE 435





# ALLIAURA PRIVILEGE 435



# ALLIAURA PRIVILEGE 435



