



DE VALK
YACHT BROKERS



NEPTUNUS 108 EXPRESS



DE VALK
YACHT BROKERS

NEPTUNUS 108 EXPRESS

BROKER'S COMMENTS

Complete example of a Neptunus 108 Express. This is a yacht that is very easy to handle because of her size, two strong engines and bow/stern thrusters and also very spacious inside for longer stays on board. She has enough engine power to go on open, tidal waters and with a minimal air draft of 3,20 also France proof. This Neptunus 108 Express is very well maintained and now ready for a visit at our sales office in Sint Annaland.

Joris van de Rijt

SPECIFICATIONS

Dimensions	11.80 x 3.90 x 1.10 (m)	Builder	Jachtwerf Neptunus B.V.
Built	1996	Cabins	2
Material	GRP	Berths	6
Engine(s)	2 x Iveco Aifo diesel	Hp/Kw	2 x 250.00 (hp), 184.00 (kw)
Asking price	sold (VAT)	Lying	at sales office

CONTACT

Sales office	De Valk Sint Annaland B.V.	Telephone	+31 (0)166 601 000
Address	Koelhuisweg 4 4697 RM Sint Annaland NL	E-mail	sintannaland@devalk.nl

DISCLAIMER

These particulars are given in good faith as supplied but cannot be guaranteed.



NEPTUNUS 108 EXPRESS

GENERAL

Model	NEPTUNUS 108 EXPRESS
Type	motor yacht
LOA (m)	11,80
Beam (m)	3,90
Draft (m)	1,10
Air draft (m)	4,50
Air draft min (m)	3,20
Headroom (m)	1,94
Year built	1996
Builder	Jachtwerf Neptunus B.V.
Country	The Netherlands
Displacement (t)	8,5
CE norm	NA
Hull material	GRP
Hull colour	white
Hull shape	deep-V Semi-displacement
Superstructure material	GRP
Rubbing strake	plastic Black
Deck material	GRP
Deck finish	teak
Superstructure deck finish	non-skid moulded in
Cockpit deck finish	teak
Window frame	aluminium
Window material	tempered glass
Deckhatch	1 x
Portholes	aluminium
Mast can be lowered	manual With gasspring (headroom under arch 1,97)
Fuel tank (litre)	steel 850
Level indicator (fuel tank)	Display + gauge glass at the tank
Freshwater tank (litre)	polyethylene 400



Level indicator (freshwater)	yes
Blackwater tank (litre)	polyethylene 90 (not connected)
Level indicator (blackwater)	Full/empty indicator
Blackwater tank extraction	deck extraction
Wheel steering	hydraulic
Extra info	Old antifouling layers removed from under water hull (2022)
Extra info	Treaded with Gelshield & antifouling (spring 2022)

ACCOMMODATION

Cabins	2
Berths	6
Interior	cherry
Floor	carpet (carpet salon and owners cabin new 2017)
Aft deck	yes
Deck saloon	yes
Headroom saloon (m)	1,90
Heating	diesel ducted hot air Planar 9D-24V - 9kW (2020) + remote control via Qstart GSM-Modem
Aft Cabin	yes
Dinette	yes
Opening door to aft deck	yes
Galley	In the bow - headroom : 1,80 / 1,90 m
Countertop	plastic White
Sink	stainless steel
Cooker	electric Bosch 2 burner
Microwave	Samsung with grill
Fridge	130 L. Kissman front loader with freezing compartment (new 2018)
Hot water system	220V + engine Inventum 50 Liter boiler
Water pressure system	electrical
Owners cabin	French bed Aft cabin - head room : 2,02 m
Bed length (m)	2,00 x 1,40 (new mattresses 2018)



NEPTUNUS 108 EXPRESS

Wardrobe	hanging and shelves
Bathroom	en suite Headroom : 1,82 m
Toilet	en suite
Toilet system	electric
Wash basin	in the bathroom
Extra info	New mattresses in 2018
Guest cabin 1	double bed Cabin in front - headroom : 1,81 m
Bed length (m)	2,02 x 1,35 (new mattresses 2018)
Wardrobe	hanging and shelves
Bathroom	separate Headroom : 1,90 m
Toilet	separate
Toilet system	manual Jabsco
Wash basin	in the bathroom
Shower	separate
Extra info	New mattresses in 2018
Extra info	Dark/light grey leatherette upholstery (new 2019)
Extra info	Lots of storage place in the boat

MACHINERY

No of engines	2
Make	Iveco
Type	Aifo
HP	250
kW	184
Fuel	diesel
Year installed	1996
Maximum speed (kn)	18
Cruising speed (kn)	8,5
Engine hours	1358
Engine cooling system	freshwater heat exchanger
Drive	shaft



NEPTUNUS 108 EXPRESS

Engine controls	bowden cable
Gearbox	hydraulic 2 x ZF
Bowthruster	electric Vetus 75 KGF (new drive in 2023)
Sternthruster	electric Twinprop 3 kW
Propeller type	fixed (both overhauled in 2020)
Propeller blades	4
Propeller shaft material	stainless steel (new propellor shafts and bearings in 2020)
Shaft lubrication	water
Electric bilge pump	New 2021
Electrical installation	12V/24V/230V
Generator	silent separator Fisher Panda 6 kW
Running hours generator	383
Start battery	2 x 120 Ah S-Power
Service battery	2 x 180 Ah DCS Exakt (new 2022)
Generator battery	1x 60 Ah Varta
Bowthruster battery	yes
Sternthruster battery	yes
Battery monitor	yes
Battery charger	Mastervolt 24/50 (new in 2022)
Inverter	24V to 12V
Diode battery combiners	yes
Shorepower	with cable
Trimtabs	Bennett
Extra info	Turbo's renewed in 2019. Injectors renewed in 2022
Extra info	2x Fuelfilter with glass water separator (new in 2021)
Extra info	New engine vibration dampers (2016) & port side engine (2019)

NAVIGATION

Compass	Suunto (with air bubble)
Depth sounder	VDO Logic & Echopilot Compact & via chart plotter
Log	VDO Logic & via chart plotter



VHF	Shipmate RS 8300 (updated in July 2023)
Rudder angle indicator	VDO
Plotter/GPS	Simrad CP31
Electronic chart(s)	1 x
Navigation lights	yes
Searchlight	(in hand)
Extra info	Qstart GSM-Modem (new in 09/2022)

EQUIPMENT

Fixed windscreen	Gebo (can be fold down)
Sprayhood	Black (new 2018)
Cockpit cover	Black (new 2018) - site pannels furled up & removable
Bimini	Black (new 2018)
Winter cover	Over complete boat (little used)
Cockpit cushions	Grey leatherette (new 2019)
Cockpit table	White painted table (has been removed, but is available)
Cockpit chairs	1 x white (and 1 x extra - has been removed but available)
Bathing platform	Covered with teak
Boarding ladder	stainless steel
Transom door	yes
Deck shower	On the bathing platform (hot and cold water)
Anchor	Pool Stainless steel
Anchor chain	Stainless steel & galvanised chain
Windlass	electrical Simpson & Lawrence (up/down buttons on the bow)
Deck wash	Connection on the bathing platform
Davits	stainless steel Prasolux
Davits controls	electrical
Sea railing	stainless steel
Grab rail (superstructure)	stainless steel
Railing side opening gates	2 x
Lifebuoy	White / red ring



NEPTUNUS 108 EXPRESS

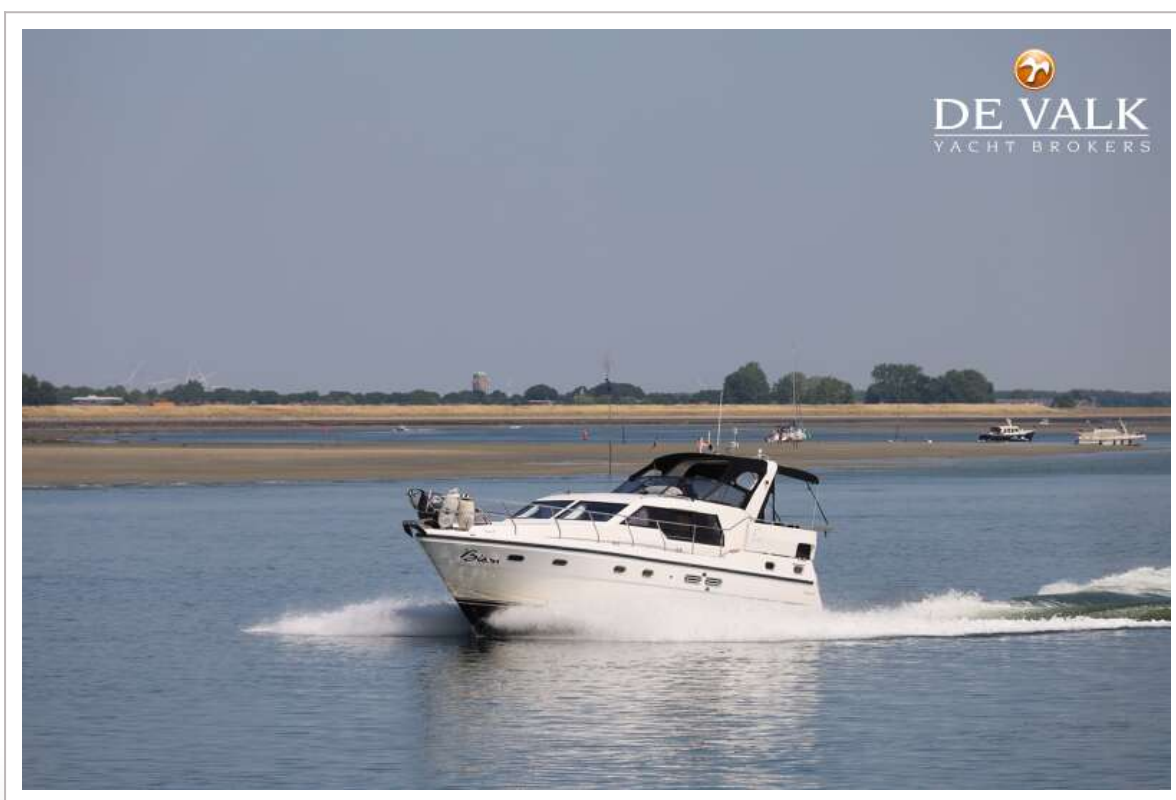
Wiper	3 x
Horn	air pressure
Fenders	yes
Mooring lines	yes
Spare parts	Filters
TV	The Philips TV can be included
Radio-cd player	Marine Stereo (new 2019) with Kenwood CD changer (6 CD's)
Cockpit speakers	2 x Fusion (2020)
Speakers in salon	2 x Fusion (2020)
Speakers in cabin	2 x Fusion in aft cabin and 2 x Fusion in the galley
Clock - barometer	yes
Fire extinguisher	3 x
Latest extinguisher survey	Need to be checked / renewed
Auto extinguisher system	2 x in the engine room
Extra info	Fusion remote display at the steering position



NEPTUNUS 108 EXPRESS



NEPTUNUS 108 EXPRESS



NEPTUNUS 108 EXPRESS



NEPTUNUS 108 EXPRESS



NEPTUNUS 108 EXPRESS



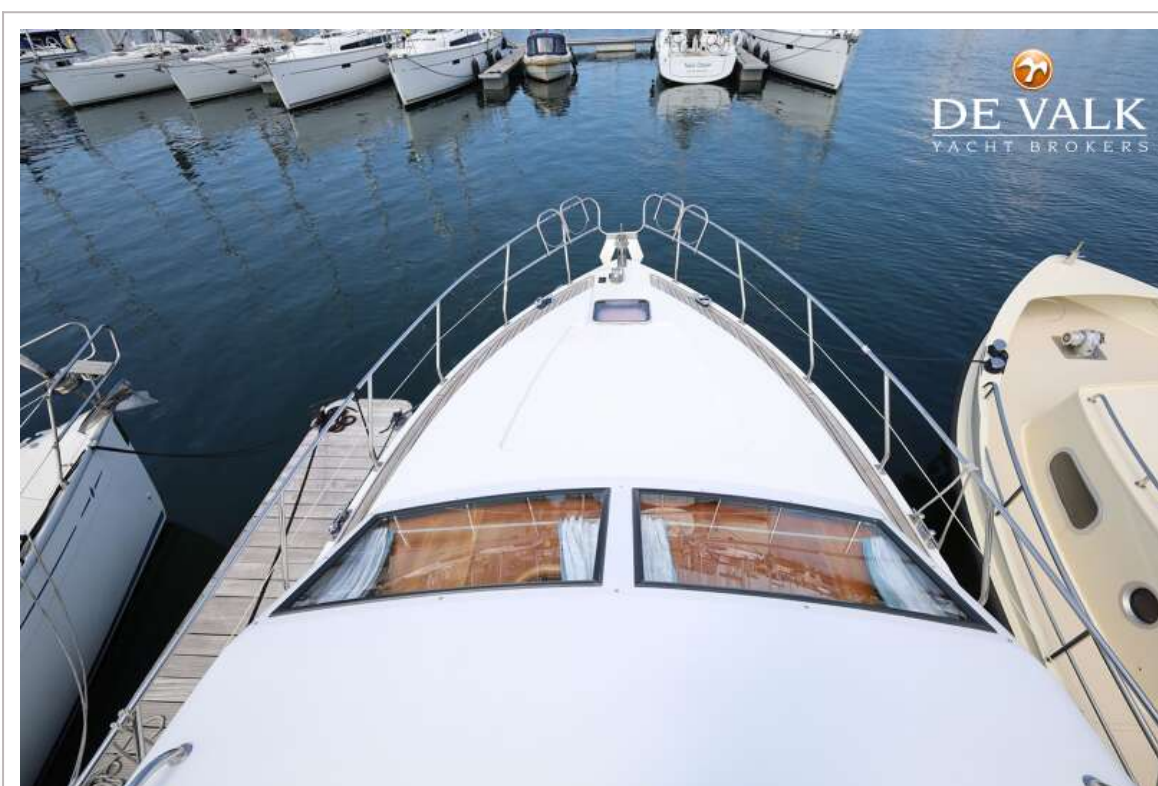
NEPTUNUS 108 EXPRESS



NEPTUNUS 108 EXPRESS



NEPTUNUS 108 EXPRESS



NEPTUNUS 108 EXPRESS



NEPTUNUS 108 EXPRESS



NEPTUNUS 108 EXPRESS



NEPTUNUS 108 EXPRESS



NEPTUNUS 108 EXPRESS



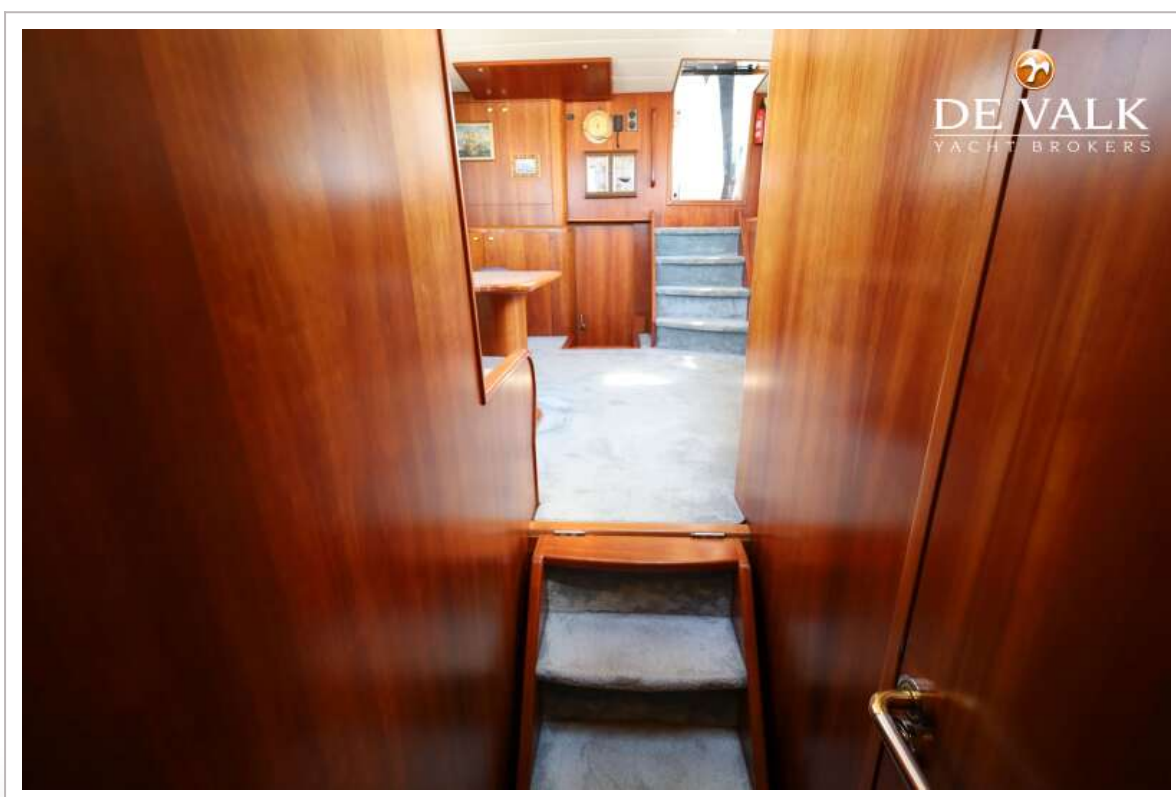
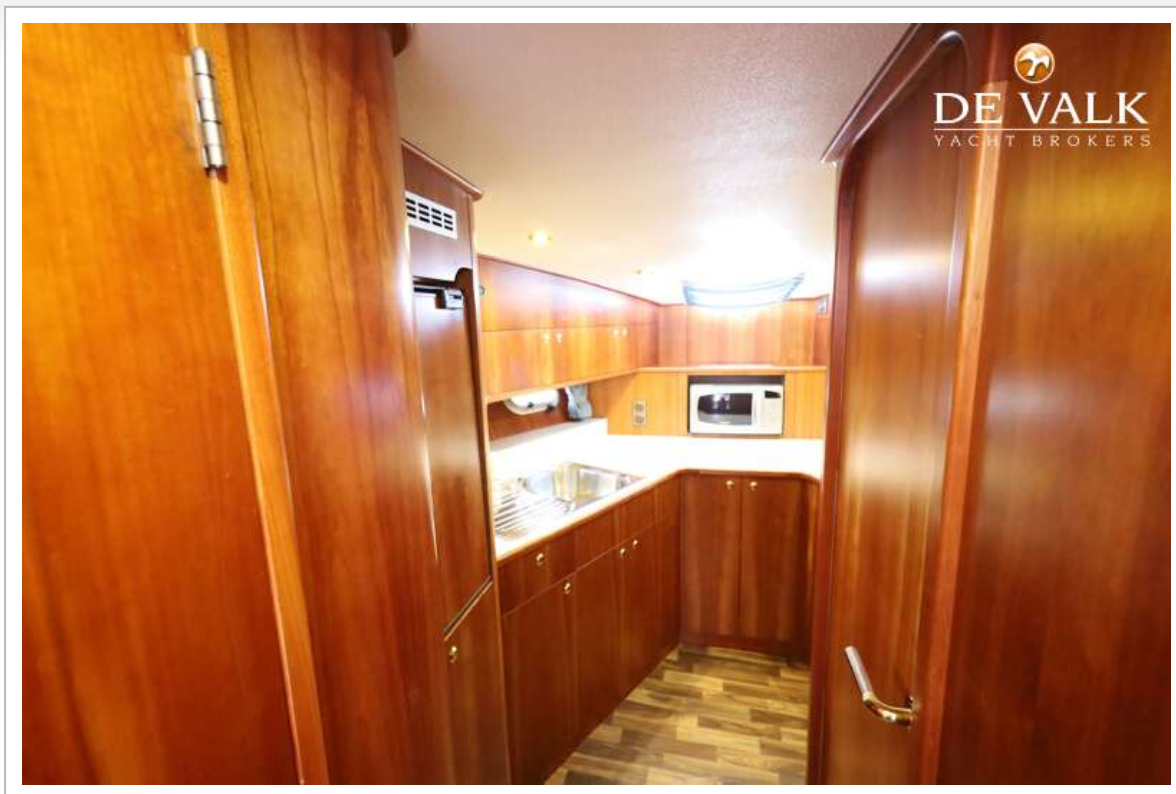
NEPTUNUS 108 EXPRESS



NEPTUNUS 108 EXPRESS



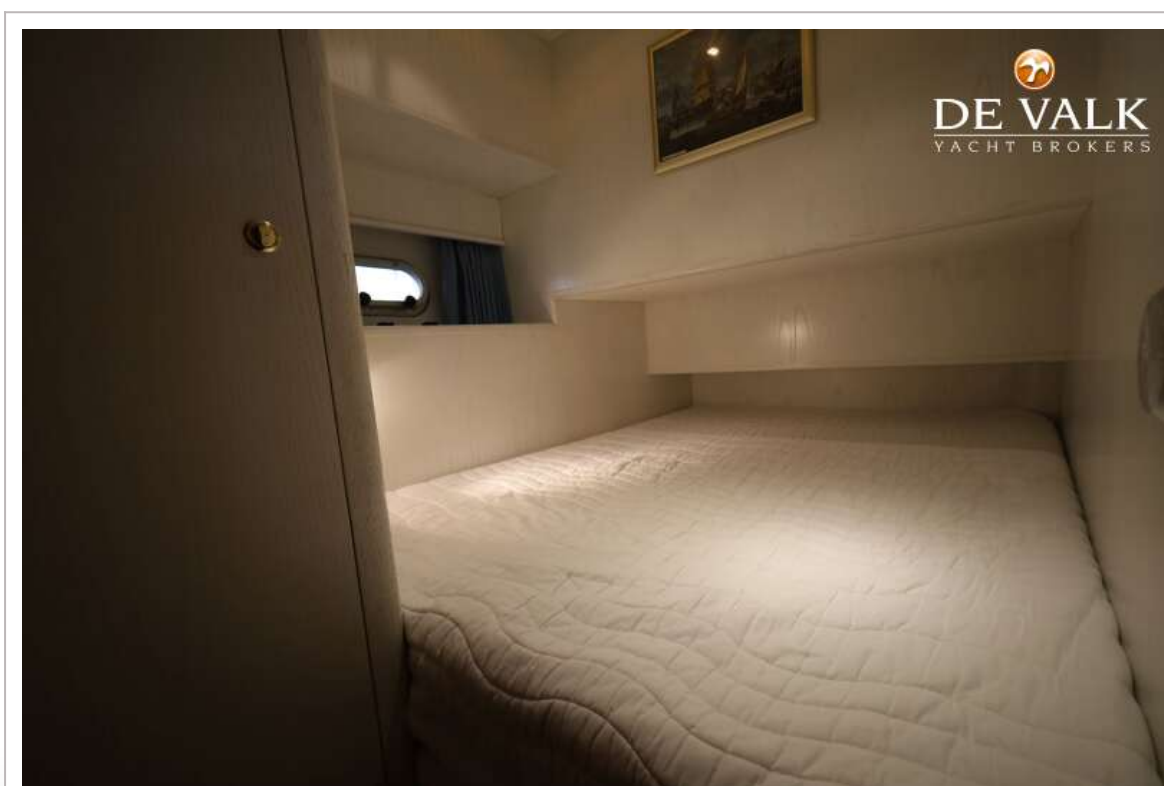
NEPTUNUS 108 EXPRESS



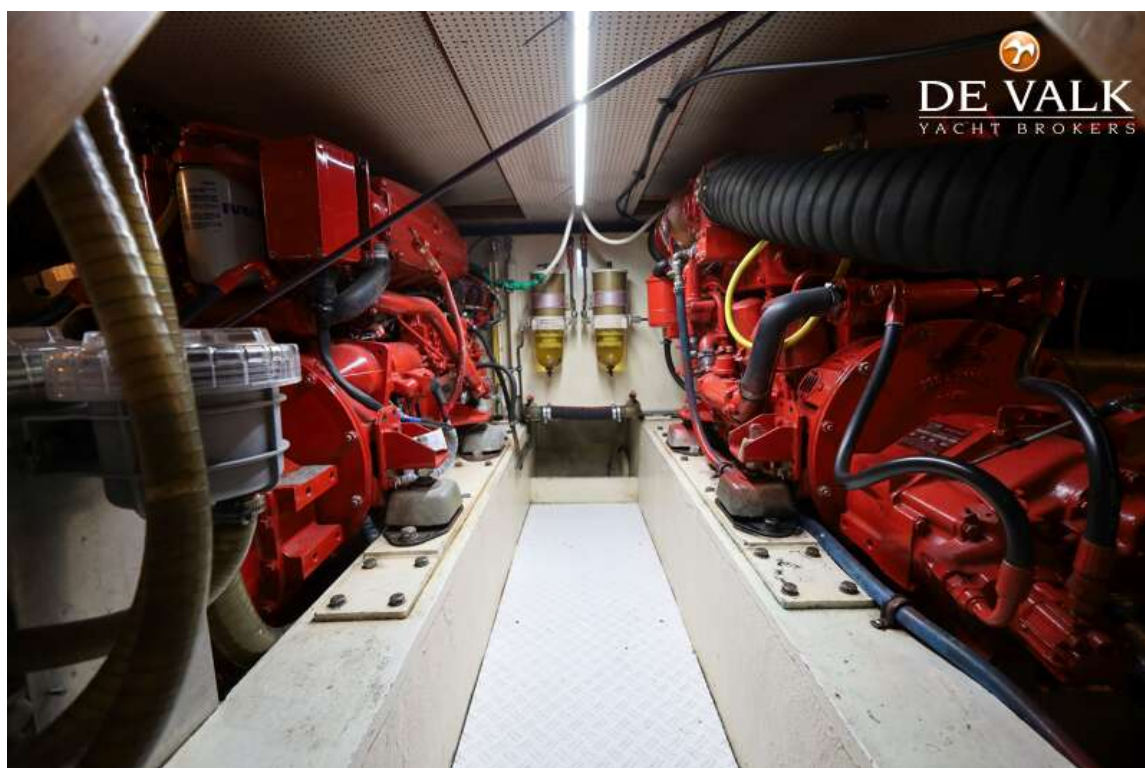
NEPTUNUS 108 EXPRESS



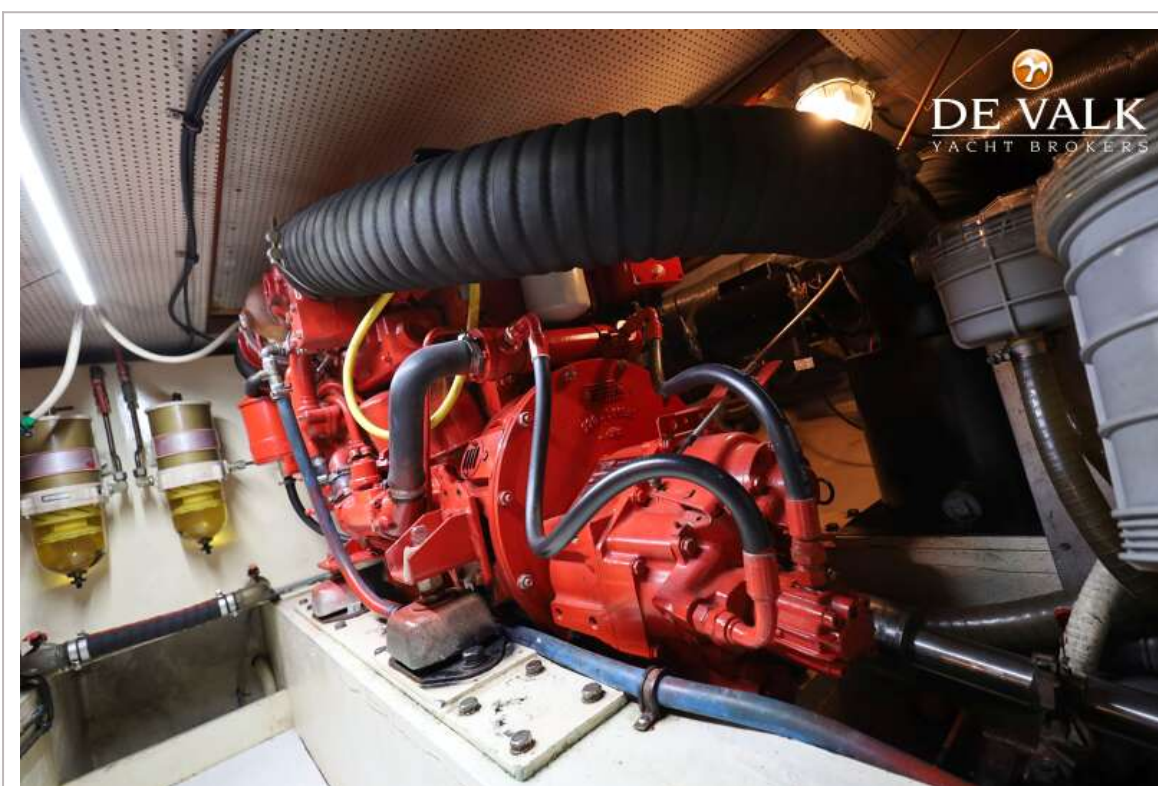
NEPTUNUS 108 EXPRESS



NEPTUNUS 108 EXPRESS



NEPTUNUS 108 EXPRESS



NEPTUNUS 108 EXPRESS



NEPTUNUS 108 EXPRESS

