



DE VALK  
YACHT BROKERS



DUFOUR ATOLL 43



DE VALK  
YACHT BROKERS

BROKERAGE | CHARTER | BERTHS | FINANCE | INSURANCE | YACHT MANAGEMENT

## BROKER'S COMMENTS

The Dufour Atoll 43 is a monohull offering the space of a catamaran. This surprising "monomaran" with a huge cockpit has a spacious saloon and kitchen. A roomy interior of 4 cabins and 2 heads allows you to invite some more guests. She is equipped with a huge galley where the galley windows give you great visibility forward. A sliding roof over the cockpit/saloon offers protection from the elements when needed. The Dufour Atoll 43 has lots of advantages to live on board while cruising and enjoying the Mediterranean climate.

*Oliver Stehula*

## SPECIFICATIONS

<b>Dimensions</b>	13.14 x 4.64 x 1.69 (m)	<b>Builder</b>	Dufour Yachts
<b>Built</b>	2000	<b>Cabins</b>	4
<b>Material</b>	GRP	<b>Berths</b>	8
<b>Engine(s)</b>	1 x NANNI 5280 HE diesel	<b>Hp/Kw</b>	62.00 (hp), 45.63 (kw)
<b>Asking price</b>	sold (VAT )	<b>Lying</b>	at sales office

## CONTACT

<b>Sales office</b>	De Valk Palma	<b>Telephone</b>	+34 971 40 29 11
<b>Address</b>	Port. Cala Nova, Avda. Joan Miro, 327 07015 Palma de Mallorca ES	<b>E-mail</b>	palma@devalk.nl

## DISCLAIMER

These particulars are given in good faith as supplied but cannot be guaranteed.



## GENERAL

Model	DUFOUR ATOLL 43
Type	sailing yacht
LOA (m)	13,14
LWL (m)	11,18
Beam (m)	4,64
Draft (m)	1,69
Year built	2000
Builder	Dufour Yachts
Country	France
Designer	Philippe Briand
Displacement (t)	9,5
CE norm	A
Hull material	GRP
Hull colour	white
Keel type	bulb keel
Antifouling (year)	2022
Fuel tank (litre)	500 l
Freshwater tank (litre)	1000 l
Blackwater tank (litre)	2x 50 l

## ACCOMMODATION

Cabins	4
Berths	8
Deck saloon	yes
Sliding roof	manual
Countertop	Duropol
Sink	stainless steel
Cooker	Two burner
Oven	Gas
Fridge	400 l



Hot water system	220V + engine
Water pressure system	Jabsco, Modell: 30620- 0292
Owners cabin	double bed
Bed length (m)	2,00m x 1,40m
Wardrobe	hanging and drawers
Bathroom	separate
Toilet	shared
Toilet system	manual
Wash basin	in the bathroom
Shower	In the bathroom
Guest cabin 1	double bed
Bed length (m)	2,00m x 1,40m
Guest cabin 2	double bed
Bed length (m)	2,00m x 1,40m
Guest cabin 3	double bed
Bed length (m)	2,00m x 1,40m

## MACHINERY

No of engines	1
Make	NANNI
Type	5280 HE
HP	62
kW	45.63
Fuel	diesel
Year installed	2000
Maximum speed (kn)	8,5
Cruising speed (kn)	6,2
Engine cooling system	freshwater heat exchanger
Drive	shaft
Engine controls	bowden cable
Gearbox	mechanical



<b>Bowthruster</b>	electric
<b>Gearbox</b>	mechanical
<b>Exhaust</b>	watercooled
<b>Propeller type</b>	fixed
<b>Propeller blades</b>	Three
<b>Propeller shaft material</b>	stainless steel
<b>Shaft lubrication</b>	water
<b>Manual bilge pump</b>	yes
<b>Electric bilge pump</b>	yes
<b>Bilge alarm</b>	yes
<b>Electrical installation</b>	yes
<b>Start battery</b>	1x 120 Ah
<b>Service battery</b>	2 x 140 Ah
<b>Battery monitor</b>	yes
<b>Battery charger</b>	Mastervolt Chargemaster 12/50-3
<b>Shorepower</b>	with cable

## NAVIGATION

<b>Compass</b>	yes
<b>Depth sounder/log</b>	yes
<b>VHF</b>	yes
<b>Autopilot</b>	Raytheon ST7000
<b>GPS</b>	Vallsat 2008 M2

## EQUIPMENT

<b>Radio-cd player</b>	Sony
<b>Cockpit speakers</b>	yes

## RIGGING

<b>Rigging</b>	sloop
----------------	-------

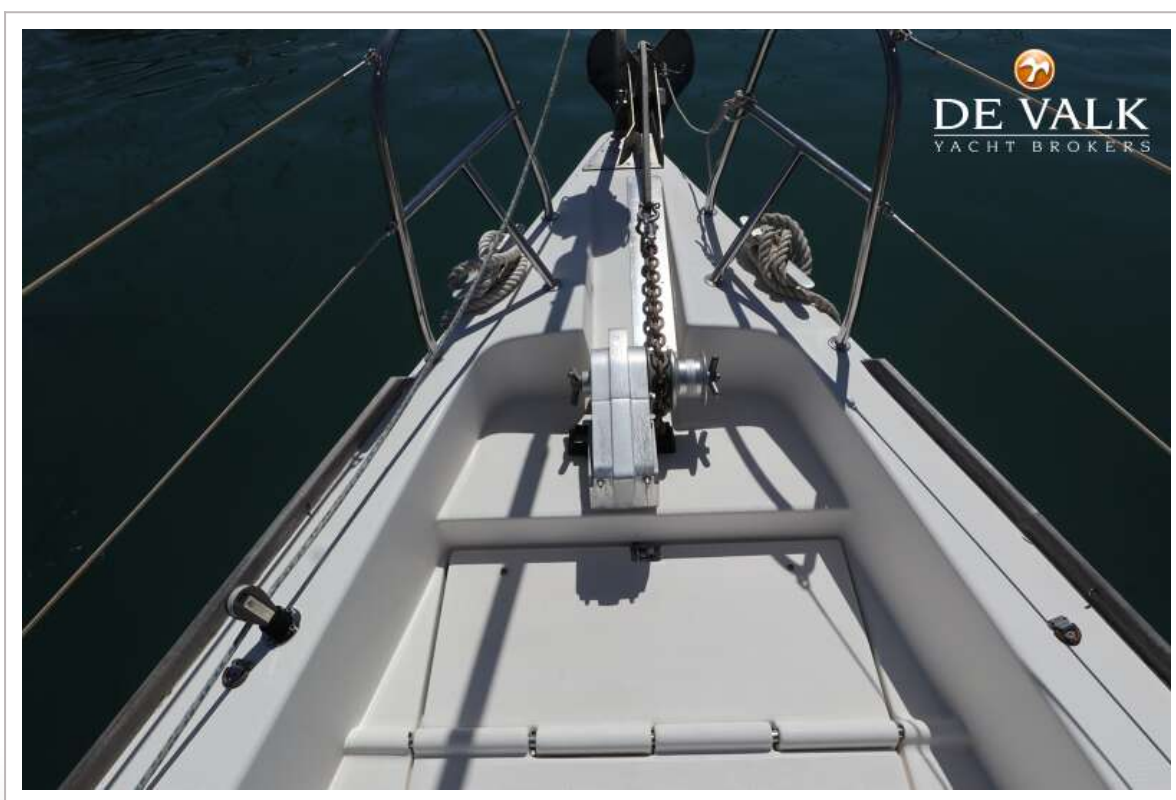
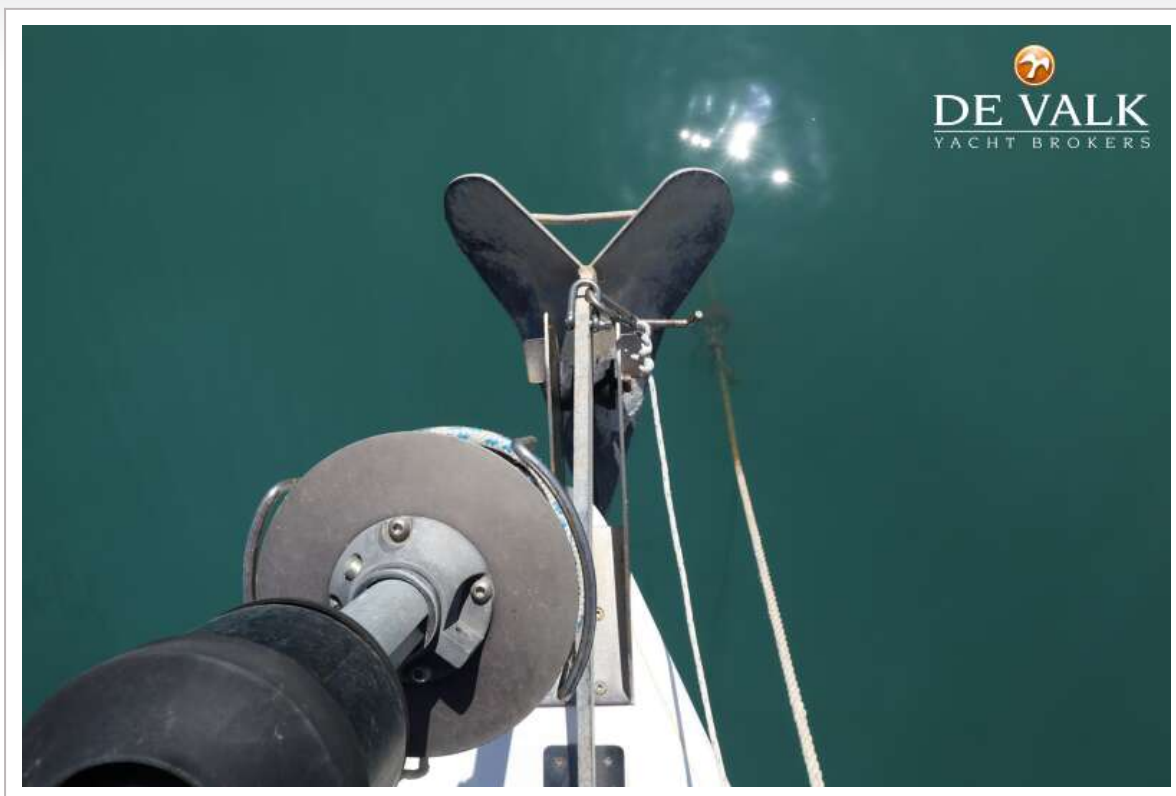


<b>Standing rigging</b>	wire
<b>Brand mast</b>	Seldén
<b>Material mast</b>	aluminium
<b>Spreaders</b>	One pair
<b>Fully battened mainsail</b>	yes
<b>Genoa</b>	yes
<b>Genoa furler</b>	yes
<b>Reefing System</b>	slabreefing
<b>Boomvang</b>	mechanical and tackle
<b>Genoa sheetwinches</b>	Two Lewmar 48
<b>Halyard winches</b>	Two



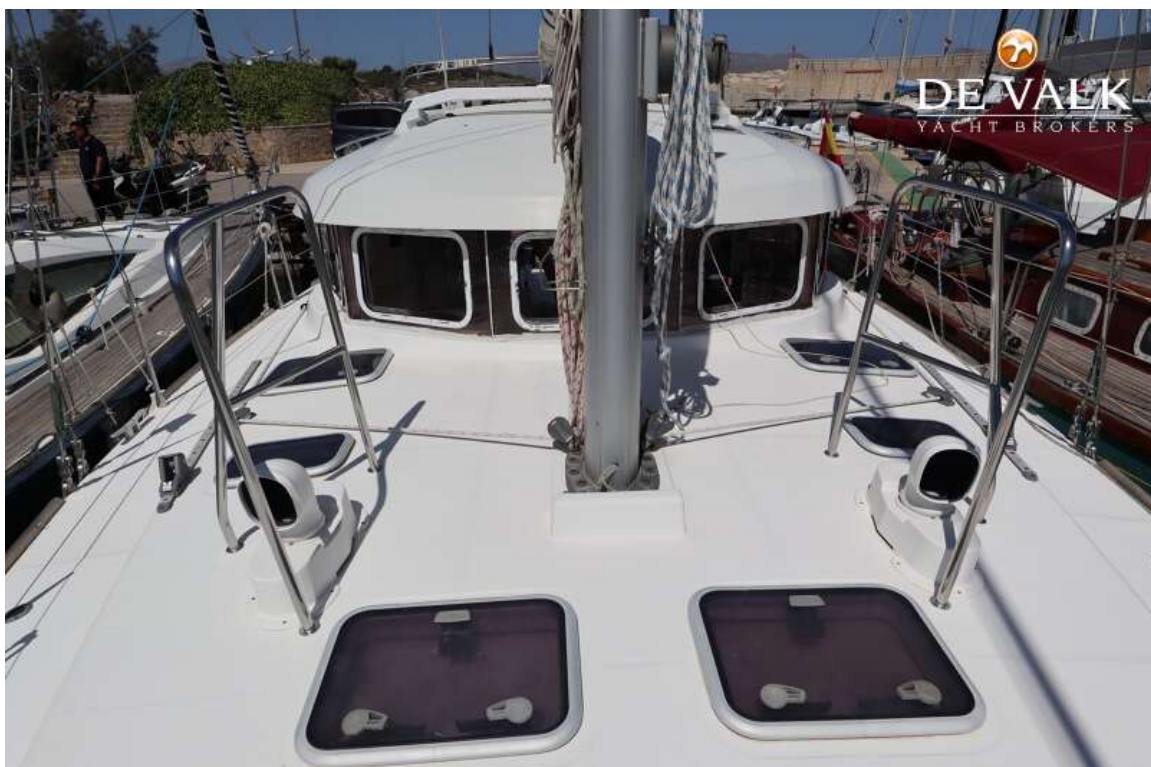




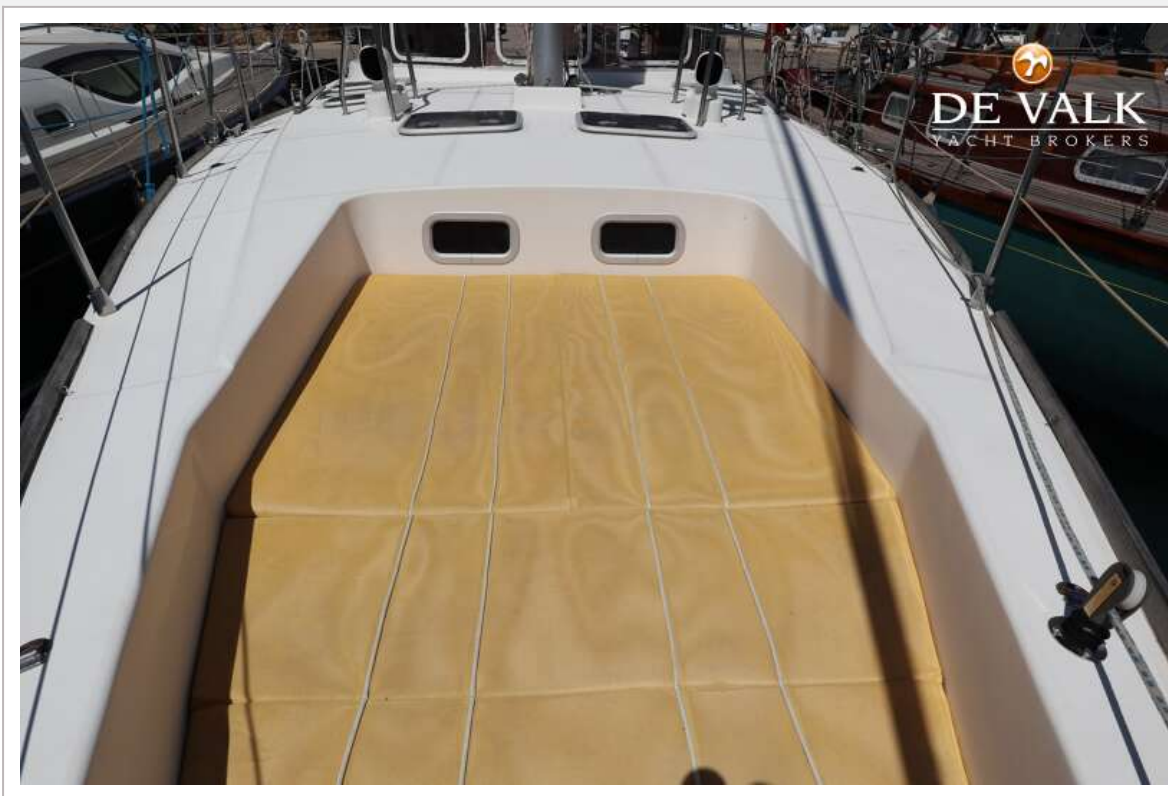




## DUFOUR ATOLL 43



## DUFOUR ATOLL 43





## DUFOUR ATOLL 43



## DUFOUR ATOLL 43





## DUFOUR ATOLL 43



## DUFOUR ATOLL 43





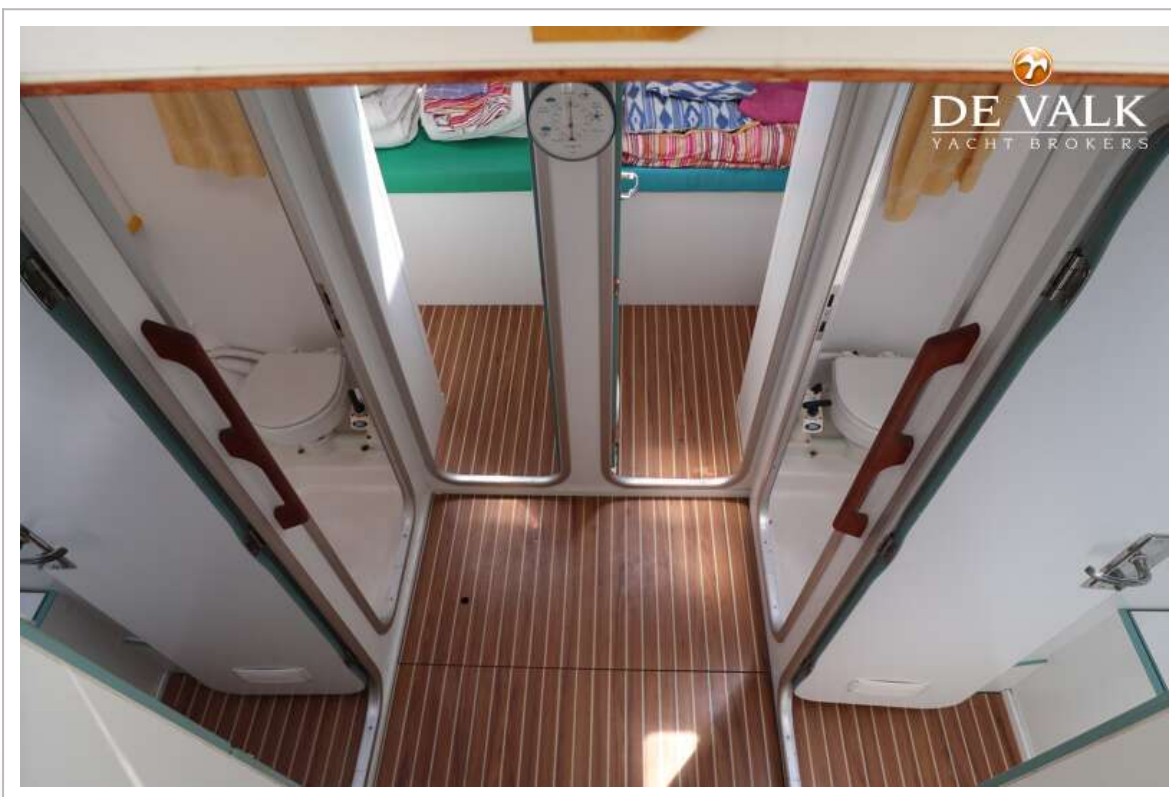




## DUFOUR ATOLL 43



## DUFOUR ATOLL 43

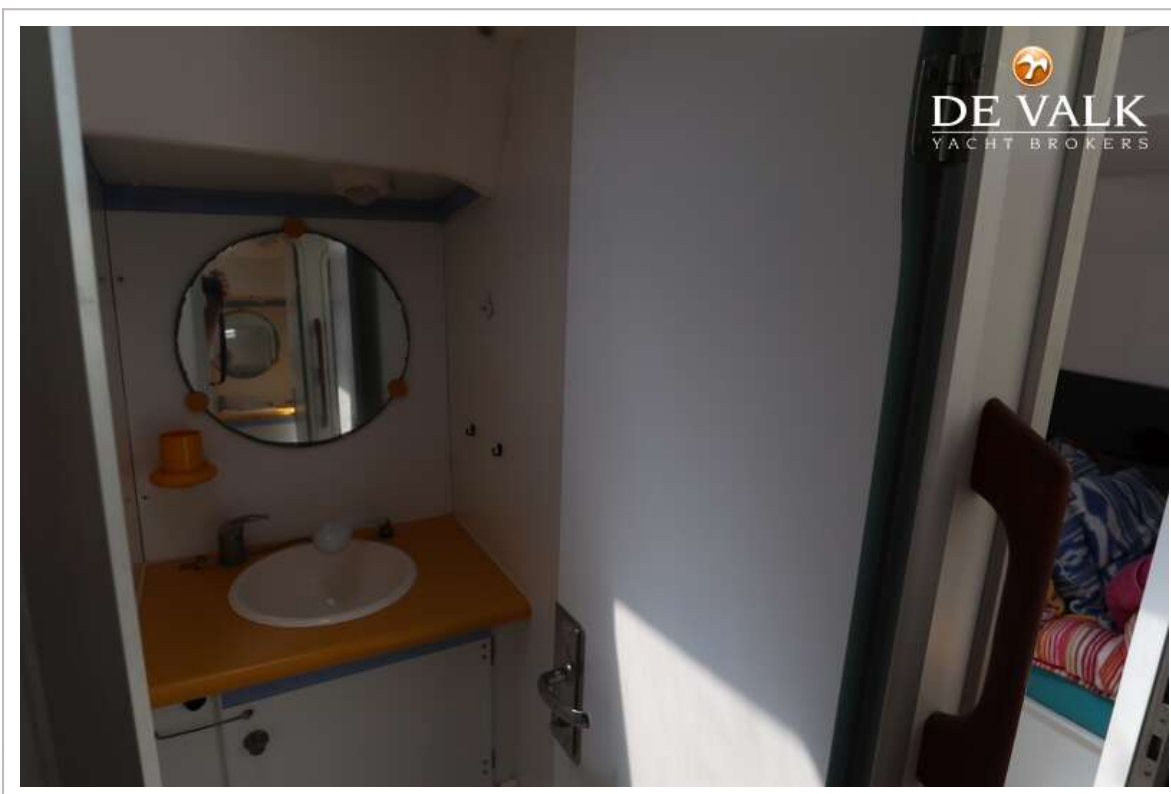












## DUFOUR ATOLL 43

