



## NORTH WIND 50

## BROKER'S COMMENTS

This very reliable North Wind 50 has a very solid hull construction and a safe and comfortable layout. She has been added a stainless steel construction aft, for the tender, 2 solar panels and a wind generator. The large salon area leads through the galley towards the large in-suite master aft cabin. Forward you will find 2 guest cabins and a 2nd bathroom. The rigging and sails were renewed some years ago, and new navigation equipment has been added recently. She just did a 600NM passage before the season 2023. A beautiful, smooth yet tough sailing yacht that lies great in even rough seas.

*Tue Simon Fasting*

## SPECIFICATIONS

<b>Dimensions</b>	14.99 x 4.50 x 2,18 / 2.18 (m)	<b>Builder</b>	North Wind Yard S.A.
<b>Built</b>	2001	<b>Cabins</b>	3
<b>Material</b>	GRP	<b>Berths</b>	7
<b>Engine(s)</b>	1 x Volvo Penta TAMD31M BT diesel	<b>Hp/Kw</b>	110.00 (hp), 80.96 (kw)
<b>Asking price</b>	sold (VAT )	<b>Lying</b>	at sales office

## CONTACT

<b>Sales office</b>	De Valk Barcelona	<b>Telephone</b>	+34 932 202 825
<b>Address</b>	Barcelona region 08392 Barcelona ES	<b>E-mail</b>	barcelona@devalk.nl

## DISCLAIMER

These particulars are given in good faith as supplied but cannot be guaranteed.



## GENERAL

Model	NORTH WIND 50
Type	sailing yacht
LOA (m)	14,99
Beam (m)	4,50
Draft (m)	2,18
Draft min (m)	2,18
Year built	2001
Builder	North Wind Yard S.A.
Country	Spain
Displacement (t)	14,6
CE norm	A
Hull material	GRP
Hull colour	blue
Superstructure material	GRP Some wear and tear on top part
Deck finish	teak Some planks need renewal forward. Corking advised in the future
Window frame	aluminium
Fuel tank (litre)	2 X 345
Level indicator (fuel tank)	yes
Freshwater tank (litre)	2 X 453
Blackwater tank (litre)	yes
More info on paintwork	Paint on hull is G5002- blue

## ACCOMMODATION

Cabins	3
Berths	7
Interior	teak
Floor	teak
Air-conditioning	single cycle airco Cruiseair
Sink	stainless steel



Cooker	calor gas 3
Oven	yes
Extractor	yes
Gas alarm	Trident
Microwave	yes
Fridge	2
Freezer	1
Hot water system	220V + engine
Water pressure system	electrical
Crockery	yes
Owners cabin	double bed
Wardrobe	hanging/drawers/shelves
Bathroom	en suite
Guest cabin 1	double bed
Wardrobe	hanging/drawers/shelves
Bathroom	shared
Guest cabin 2	twin single
Wardrobe	hanging/drawers/shelves
Bathroom	shared
Washing machine	yes
Extra info	Led lights interior

## MACHINERY

No of engines	1
Make	Volvo Penta
Type	TAMD31M BT
HP	110
kW	80.96
Fuel	diesel
Engine hours	3789
Drive	shaft



<b>Gearbox</b>	Hurth HS45A
<b>Bowthruster</b>	electric Vetus
<b>Propeller type</b>	Max prop
<b>Propeller blades</b>	3 - 460mm
<b>Generator</b>	Maze - new heat exchanger and start engine 2023
<b>Running hours generator</b>	1006
<b>Start battery</b>	1
<b>Service battery</b>	6
<b>Wind generator</b>	1
<b>Solar panel</b>	2
<b>Watermaker</b>	100L / hour

## NAVIGATION

<b>Compass</b>	yes
<b>Multi control display</b>	New
<b>Depth sounder</b>	yes
<b>Windset</b>	Raymarine
<b>VHF</b>	Raymarine 240E
<b>VHF handheld</b>	yes
<b>Autopilot</b>	Garmin Reactor 40
<b>Radar</b>	yes
<b>GPS</b>	Furuno Waas Navigator
<b>Plotter</b>	yes
<b>AIS receiver</b>	yes
<b>AIS transponder</b>	yes
<b>Navigation lights</b>	Aquasignal

## EQUIPMENT

<b>Bimini</b>	Beige - 2 years old
<b>Anchor chain</b>	40 m
<b>Windlass</b>	1500W



Dinghy	With outboard
Life raft	yes
Lifejackets	yes
Satellite	Phone Sailor

## RIGGING

Rigging	sloop-cutter
Standing rigging	wire Less than 10 years old
Mainsail	Fully battened
Mainsail cover	yes
Main staysail	yes
Genoa	Electric
Gennaker	Electric
Primary sheet winch	Harken electric
Secondary sheet winch	Harken electric



# NORTH WIND 50





# NORTH WIND 50

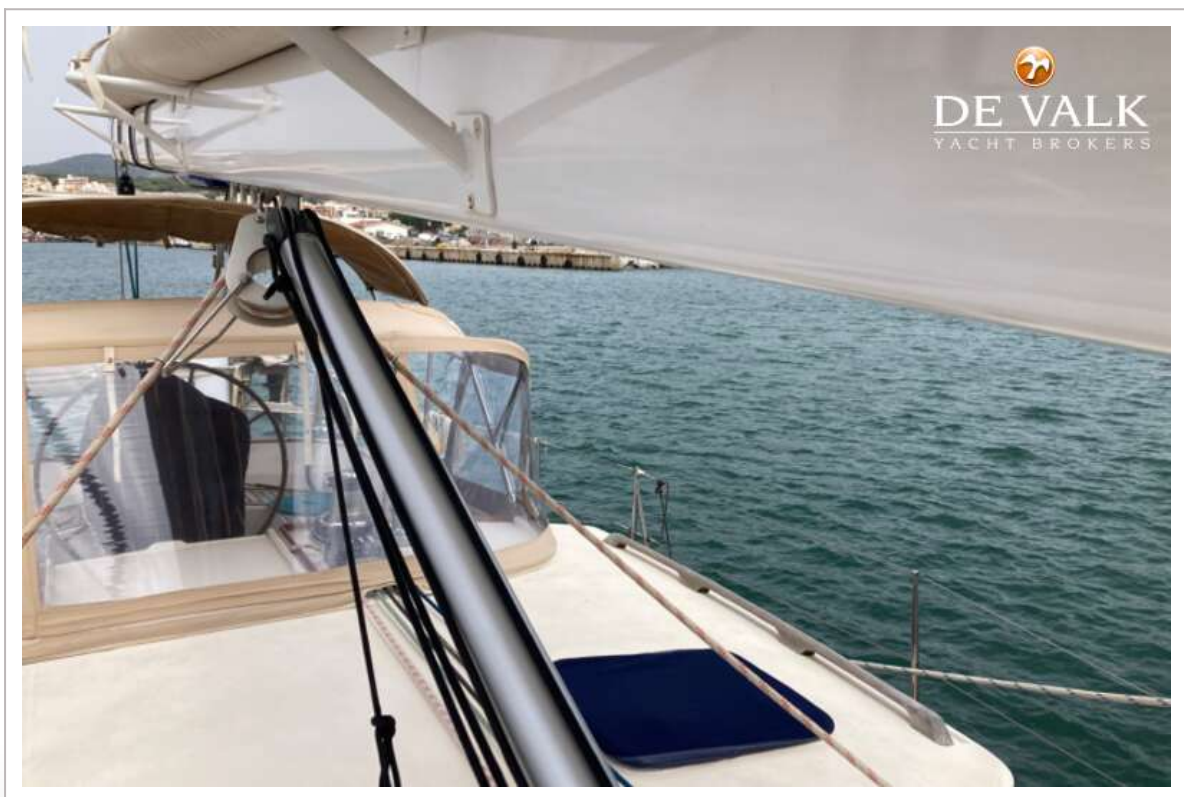




# NORTH WIND 50



# NORTH WIND 50





# NORTH WIND 50



# NORTH WIND 50





# NORTH WIND 50



# NORTH WIND 50

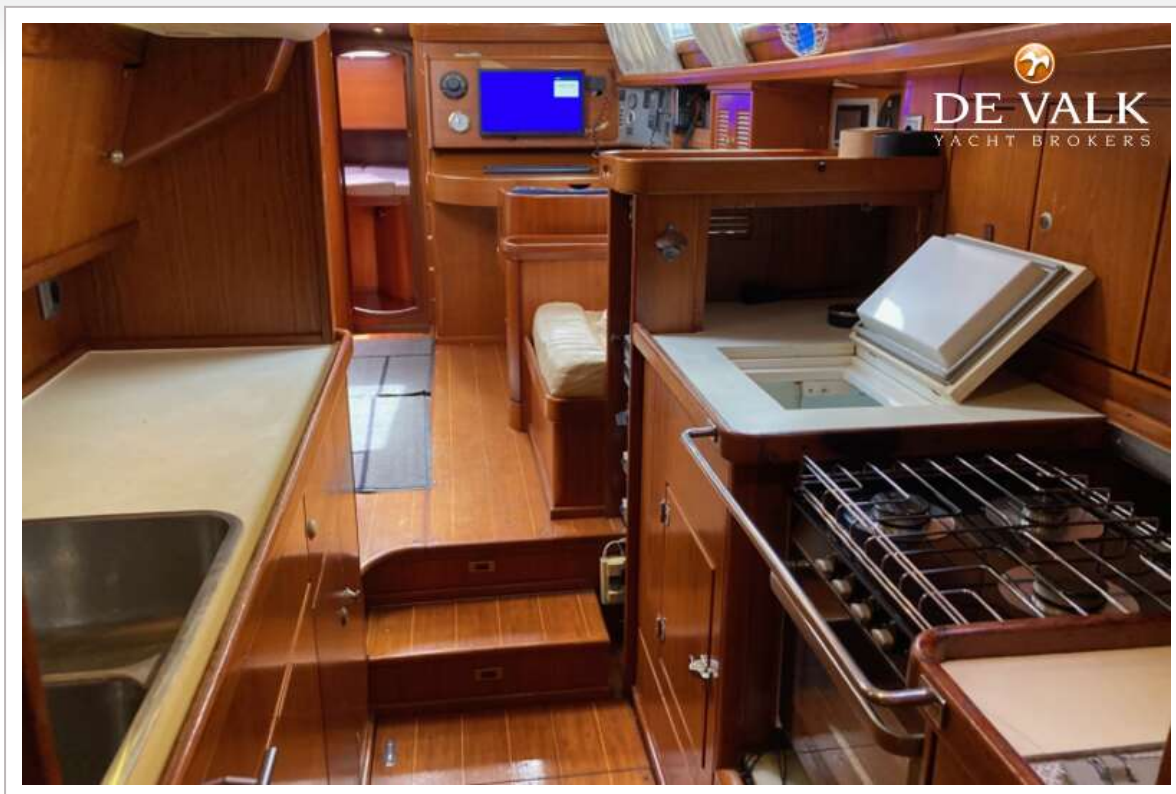




# NORTH WIND 50



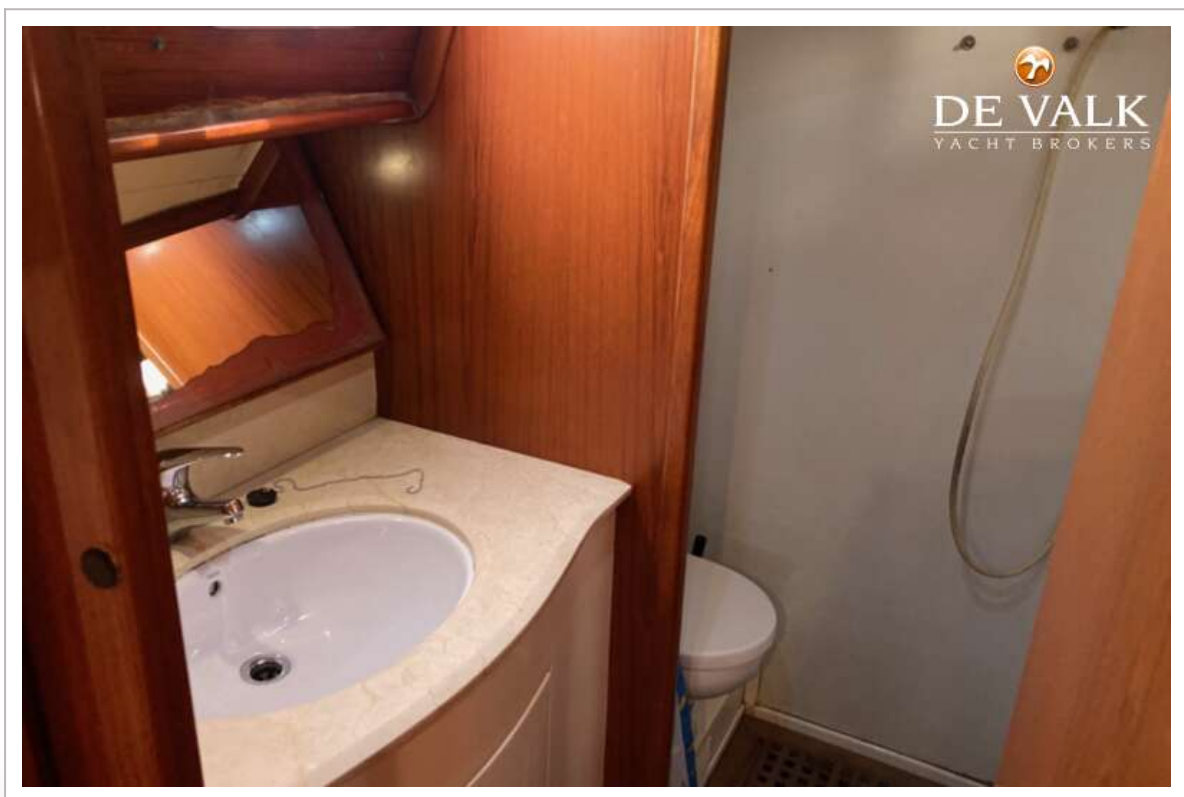
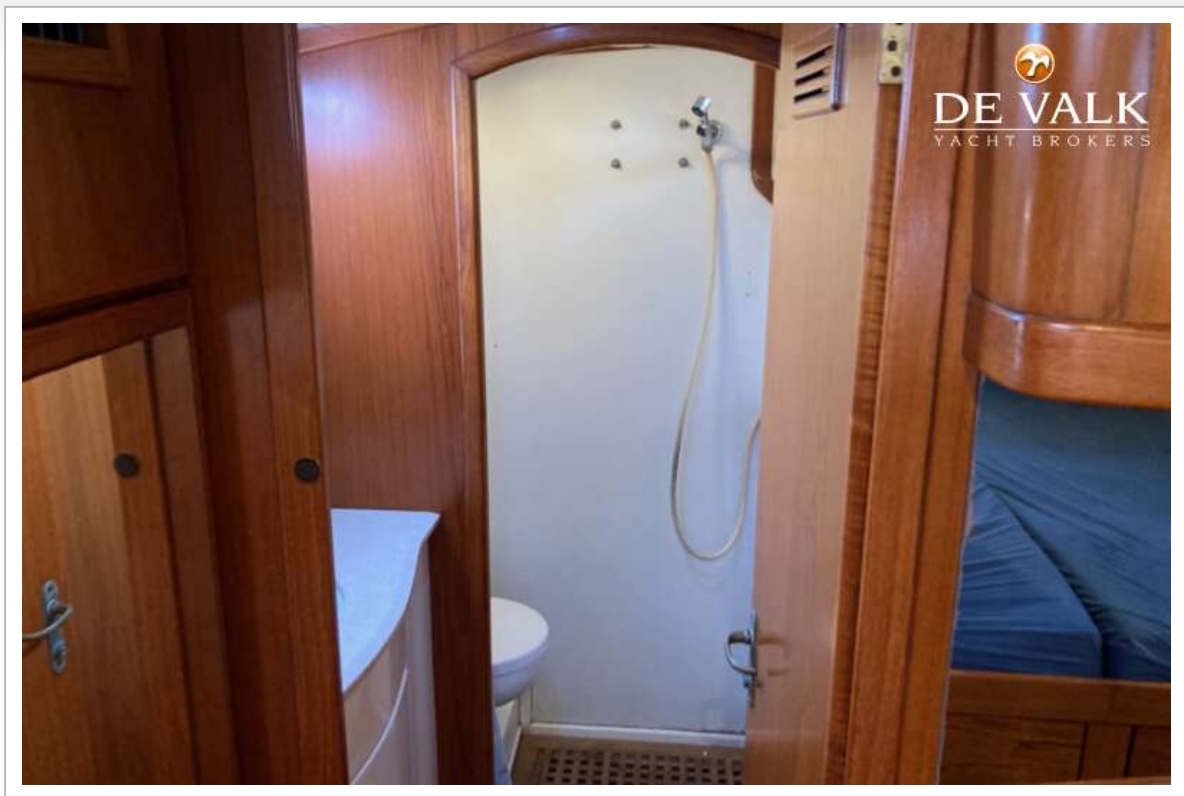
# NORTH WIND 50





# NORTH WIND 50









# NORTH WIND 50

