



SUNSEEKER TOMAHAWK 41

SUNSEEKER TOMAHAWK 41

BROKER'S COMMENTS

This Tomahawk 41 is probably one of the best preserved on the market. A safe, reliable, easy to manage and fast vessel with a sleek line, reaching 40 knots and cruising comfortably at 26 knots. The same model was owned by Sir Roger Moore, for his own enjoyment. The excellent condition of the gel coat of "8464" indicates the overall great condition of the boat. The main engines were overhauled in 2022, and upgrades were implemented. A very comfortable deck area leads down to the galley on the lower deck, along with a very spacious salon. Turn key ready. Located in Copenhagen.

Tue Simon Fasting

SPECIFICATIONS

Dimensions	13.40 x 3.25 x 1.52 (m)	Builder	Sunseeker
Built	1998	Cabins	1
Material	GRP	Berths	4
Engine(s)	2 x Mercruiser 7,3 D-Tronic diesel	Hp/Kw	2 x 300.00 (hp), 220.80 (kw)
Asking price	€ 89.000 (VAT Paid)	Lying	at sales office

CONTACT

Sales office	De Valk Barcelona	Telephone	+34 932 202 825
Address	Barcelona region 08392 Barcelona ES	E-mail	barcelona@devalk.nl

DISCLAIMER

These particulars are given in good faith as supplied but cannot be guaranteed.



SUNSEEKER TOMAHAWK 41

GENERAL

Model	SUNSEEKER TOMAHAWK 41
Type	motor yacht
LOA (m)	13,40
Beam (m)	3,25
Draft (m)	1,52
Year built	1998
Builder	Sunseeker
Country	United Kingdom
Displacement (t)	7,5
CE norm	B
Hull material	GRP
Superstructure material	Gel coat in excellent conditions
Deck finish	teak Excellent condition
Superstructure deck finish	non-skid moulded in Original very good condition
Antifouling (year)	2024
Window frame	stainless steel
Fuel tank (litre)	1000
Level indicator (fuel tank)	yes
Freshwater tank (litre)	200
Level indicator (freshwater)	yes
More info on hull	In excellent conditions.
Extra info	Located in Copenhagen, Denmark

ACCOMMODATION

Cabins	1
Berths	4
Interior	cherry
Floor	carpet
Open cockpit	yes
Sink	stainless steel



SUNSEEKER TOMAHAWK 41

Cooker	electric
Fridge	yes
Hot water system	220V + engine
Water pressure system	electrical
Coffee maker	yes
Crockery	Original Sunseeker cutlery. Excellent condition.
Owners cabin	double bed
Wardrobe	drawers and shelves
Bathroom	separate

MACHINERY

No of engines	2
Make	Mercruiser
Type	7,3 D-Tronic
HP	300
kW	220.80
Fuel	diesel
Year of overhaul	2022 - complete mega overhaul of both engines
Maximum speed (kn)	40
Cruising speed (kn)	26
Engine hours	549
Engine controls	electrical
Bowthruster	electric BP 800V - 5 KW
Start battery	2 gel
Service battery	4 maintenance free
Battery monitor	Power display control with app installed
Battery charger	yes
Trimtabs	2021 - Mente marine automatic trim taps
Extra info	Freshwater rinse system installed
Extra info	New valves, new tubes / pipes, pumps revised



NAVIGATION

Compass	Garmin
Multi control display	Garmin and Furuno
Depth sounder	Garmin
GPS	yes
Plotter/GPS	Furuno
Electronis chart(s)	C-map for Danish / Swedish waters
Navigation lights	yes

EQUIPMENT

Anchor chain	Stainless steel - new
Windlass	electrical New
Dinghy	inflatable
Alarm system	Alarm system with app



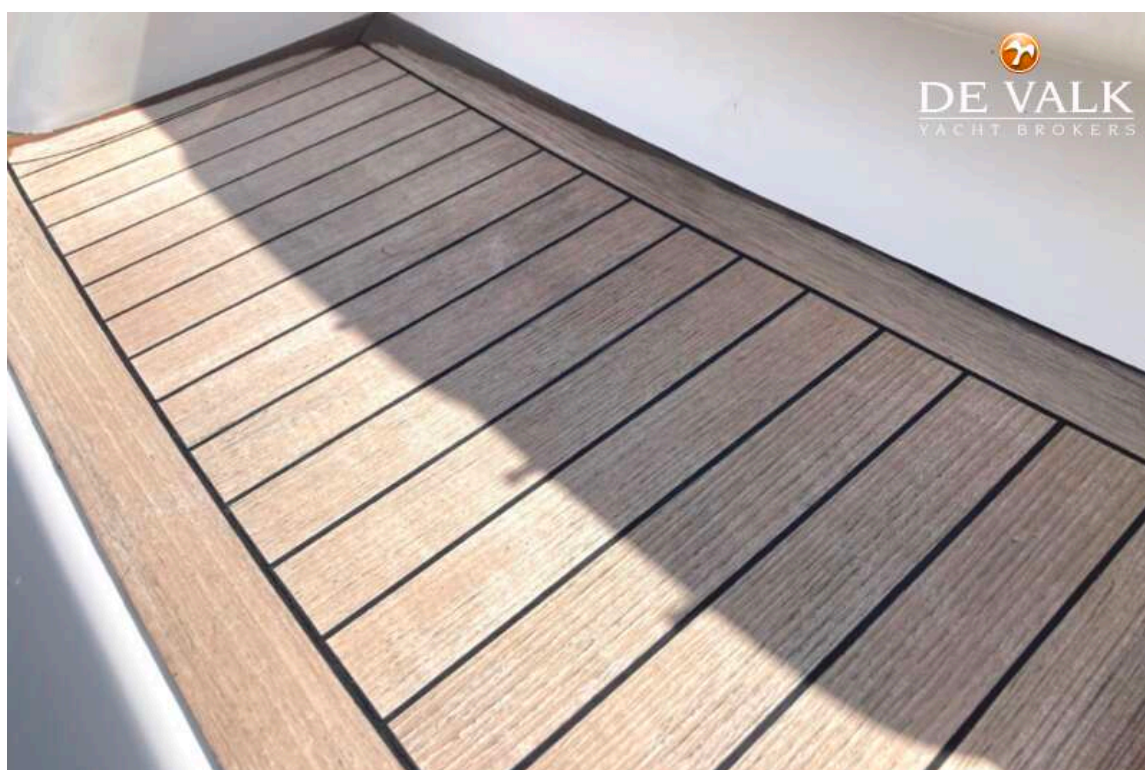
SUNSEEKER TOMAHAWK 41



SUNSEEKER TOMAHAWK 41



SUNSEEKER TOMAHAWK 41



SUNSEEKER TOMAHAWK 41



SUNSEEKER TOMAHAWK 41



SUNSEEKER TOMAHAWK 41



SUNSEEKER TOMAHAWK 41



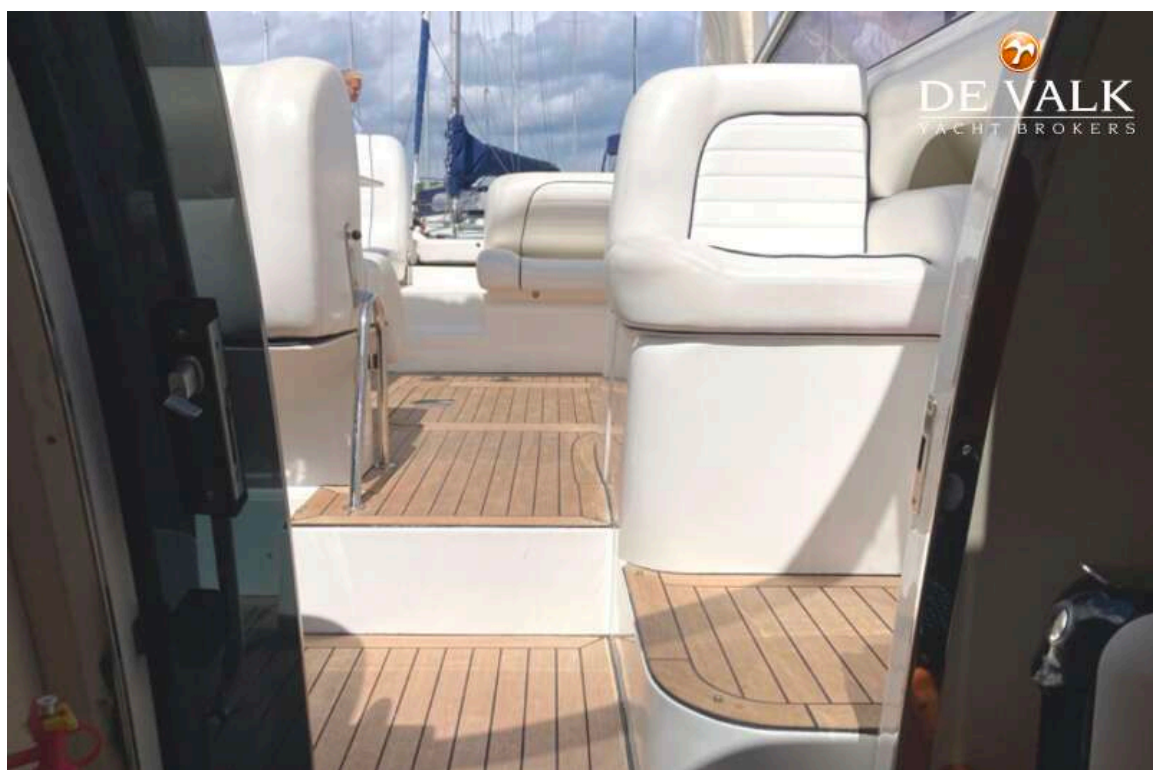
SUNSEEKER TOMAHAWK 41



SUNSEEKER TOMAHAWK 41



SUNSEEKER TOMAHAWK 41



SUNSEEKER TOMAHAWK 41



SUNSEEKER TOMAHAWK 41



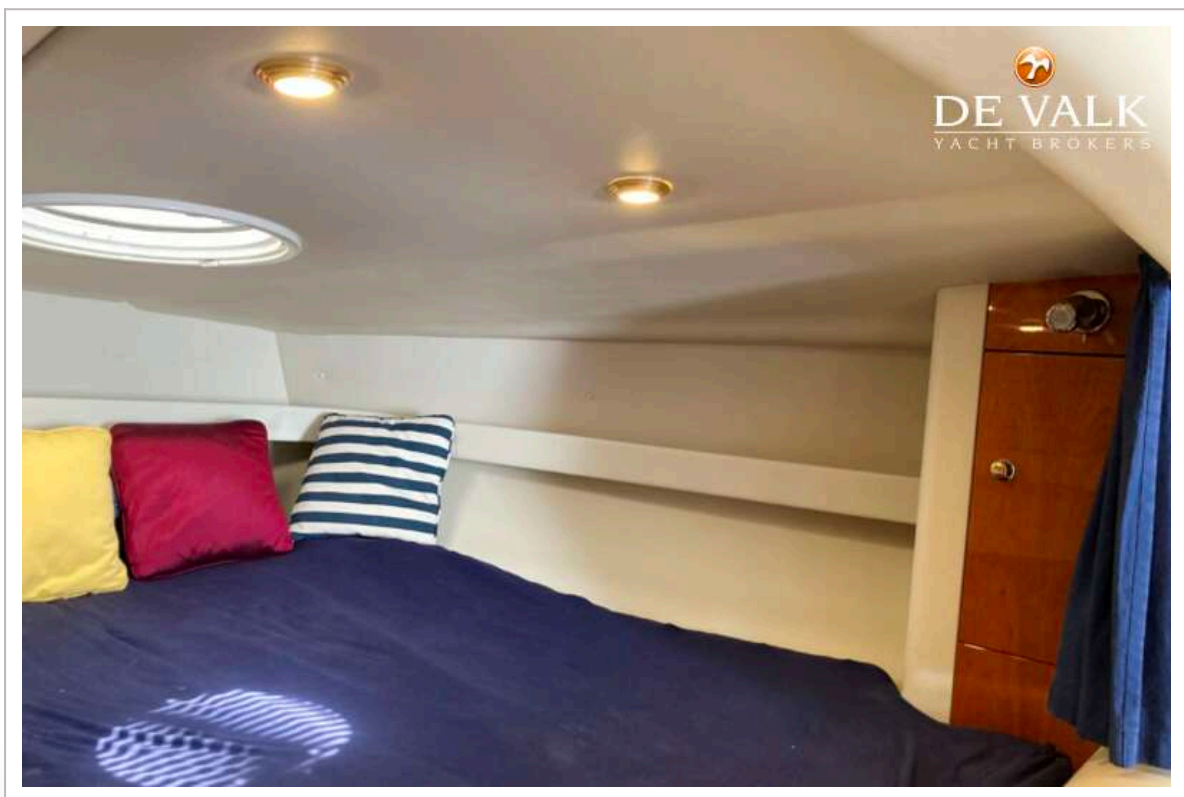
SUNSEEKER TOMAHAWK 41



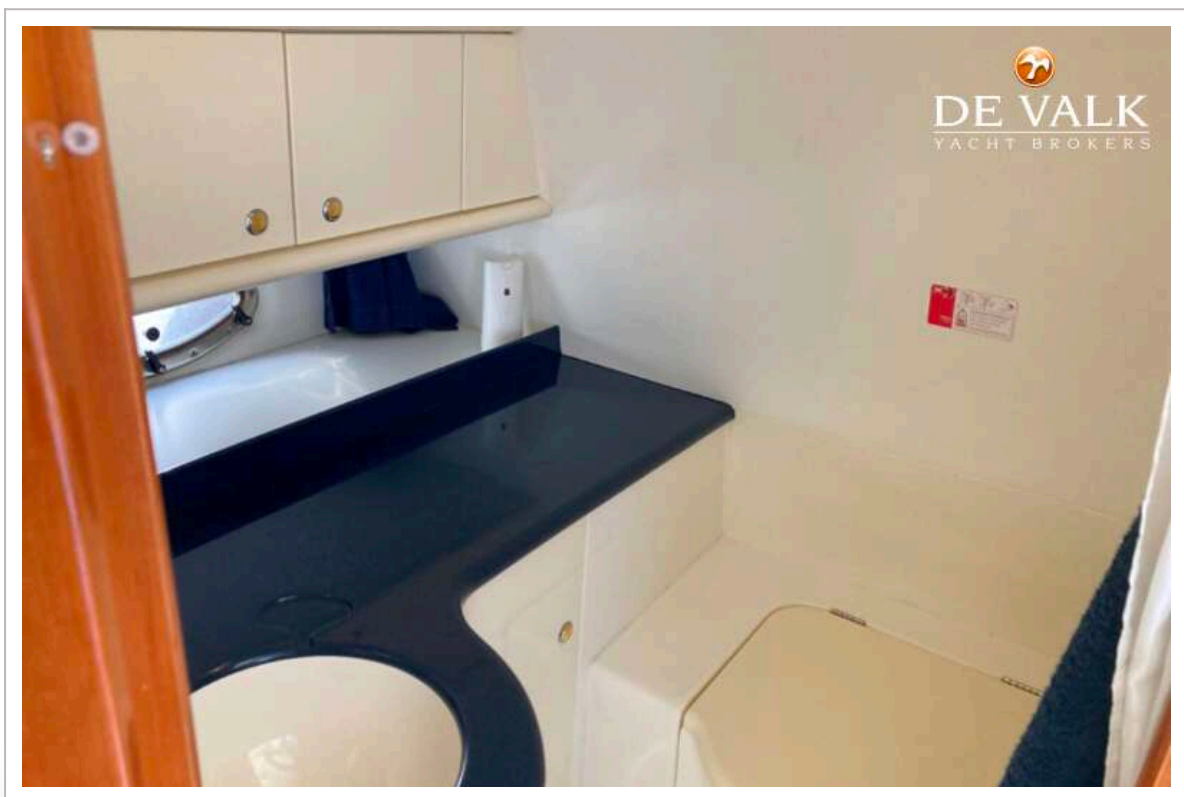
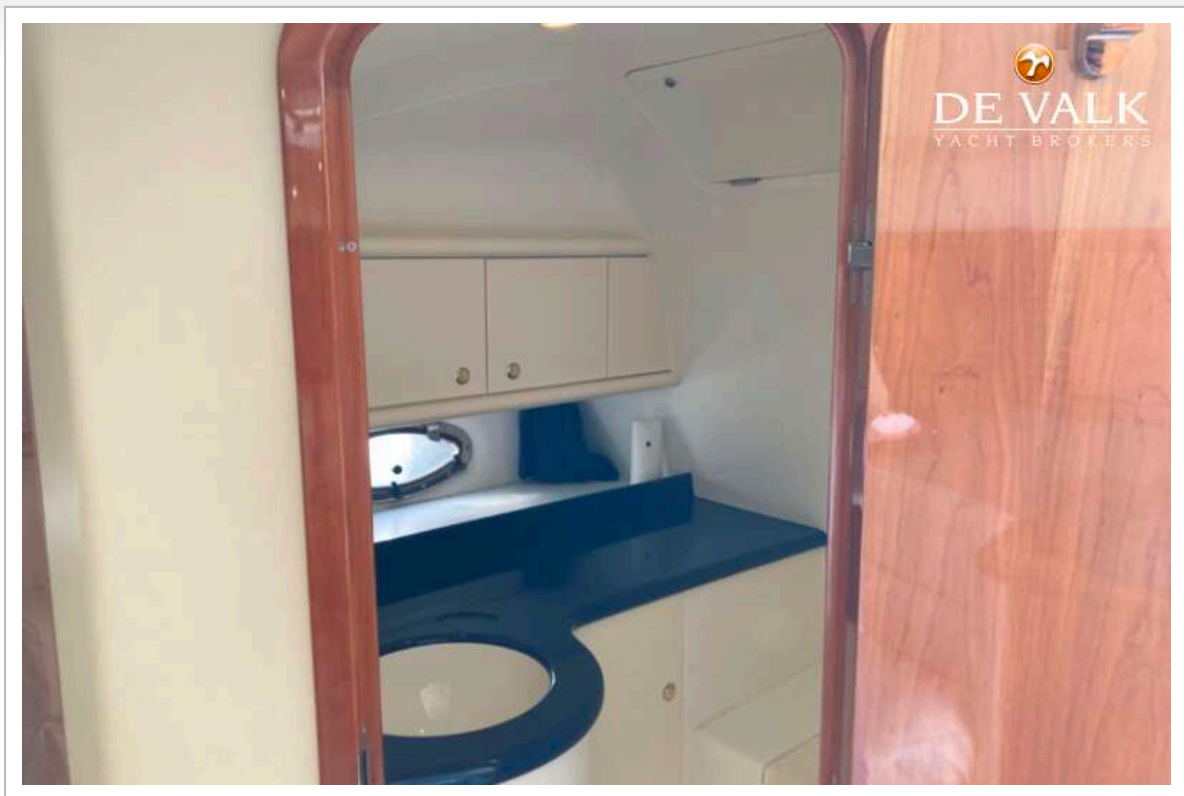
SUNSEEKER TOMAHAWK 41



SUNSEEKER TOMAHAWK 41



SUNSEEKER TOMAHAWK 41



SUNSEEKER TOMAHAWK 41



SUNSEEKER TOMAHAWK 41

