



DE VALK
YACHT BROKERS



BAVARIA 32 CRUISER



DE VALK
YACHT BROKERS

BAVARIA 32 CRUISER

BROKER'S COMMENTS

The Bavaria 32 Cruiser has a lot to offer when it comes to charm, interior space, functionality and not but not least the "Bruce Farr signature" sail-performance. The interior is modern but not over the top when it comes to styling and the use of colors. Storage space is a premium as well as the cabin size and the pretty large bathroom/shower area. Light and ventilation is also a plenty. Ample sized cockpit to with the fold open/down bathing platform for easy access and all the summer entertainment you need. The 1,50 mtr draft leaves a lot on the table for the sailing area to choose from.

Marc Weijenberg

SPECIFICATIONS

Dimensions	9.99 x 3.42 x 1.50 (m)	Builder	Bavaria Yachtbau GmbH
Built	2010	Cabins	2
Material	GRP	Berths	6
Engine(s)	1 x Volvo Penta D1-20 diesel	Hp/Kw	19.00 (hp), 13.98 (kw)
Asking price	sold (VAT)	Lying	The Netherlands

CONTACT

Sales office	De Valk Thuishaven	Telephone	+31 35 5829042
Address	Peperstraat 7 1411 PX Naarden NL	E-mail	thuishaven@devalk.nl

DISCLAIMER

These particulars are given in good faith as supplied but cannot be guaranteed.



BAVARIA 32 CRUISER

GENERAL

Model	BAVARIA 32 CRUISER
Type	sailing yacht
LOA (m)	9,99
LWL (m)	8,85
Beam (m)	3,42
Draft (m)	1,50
Air draft (m)	14,85
Headroom (m)	1,85
Year built	2010
Builder	Bavaria Yachtbau GmbH
Country	Germany
Designer	Bruce Farr
Displacement (t)	6,3
Ballast (tonnes)	cast iron 1,5
CE norm	A
Hull material	GRP
Hull colour	white
Hull shape	round-bilged
Keel type	bulb keel
Superstructure material	GRP
Deck material	GRP
Deck finish	non-skid moulded in
Cockpit deck finish	teak
Window frame	aluminium
Window material	polycarbonate
Deckhatch	yes
Portholes	aluminium
Fuel tank (litre)	polyethylene 150
Freshwater tank (litre)	polyethylene 150
Blackwater tank (litre)	polyethylene 70



BAVARIA 32 CRUISER

Blackwater tank extraction	deck extraction + uw line
Wheel steering	cable steering Lewmar
Emergency tiller	yes

ACCOMMODATION

Cabins	2
Berths	6
Interior	yes
Floor	woodprint
Open cockpit	yes
Saloon	yes
Headroom saloon (m)	1,85-1,90
Heating	diesel ducted hot air Webasto Evo
Chart table	yes
Aft Cabin	yes
Dinette	(2 x bed 2,00 x 0,60 mtr)
Galley	yes
Countertop	plastic
Sink	stainless steel
Cooker	calor gas Bavaria 2 burner
Oven	Bavaria
Fridge	toploader Waeco 12v
Hot water system	220V + engine
Water pressure system	electrical
Owners cabin	double bed
Bed length (m)	2,05 x 1,70
Wardrobe	hanging and shelves
Bathroom	shared
Toilet	shared
Toilet system	manual
Wash basin	in the bathroom



BAVARIA 32 CRUISER

Shower	shared
Guest cabin 1	v-bed
Bed length (m)	2,00 x 1,60 mtr
Wardrobe	hanging and shelves
Extra info	The salon cushions have extra dark grey covers to protect the original grey-white upholstery.
Extra info	The deckhatches have sliding Lewmar gauzes/blinds

MACHINERY

No of engines	1
Make	Volvo Penta
Type	D1-20
HP	19
kW	13.98
Fuel	diesel
Year installed	2010
Maximum speed (kn)	6,5
Cruising speed (kn)	5,5
Consumption (l/hr)	2
Engine hours	330
Engine cooling system	freshwater heat exchanger
Drive	sail-drive
Saildrive seal	(2010)
Engine controls	bowden cable
Gearbox	mechanical Volvo Penta 130S
Exhaust	watercooled
Propeller type	folding Gori (2 blad)
Manual bilge pump	yes
Electric bilge pump	yes
Electrical installation	12v/220v
Start battery	1 x



BAVARIA 32 CRUISER

Service battery	2 x 140ah (2022)
Battery charger	Victron Phoenix 12v/50amp/3 output (2022)
Shorepower	with cable

NAVIGATION

Compass	Plastimo Olympic 135
Electric compass	via autopilot
Depth sounder/log	Garmin Gmi10
Windset	Garmin GMI 10
VHF	Navicom RT550
Autopilot	Raymarine IP70 (wheeldrive)
Plotter/GPS	Radio Ocean Chart 7X
Electronic chart(s)	1 x
Navigation lights	yes

EQUIPMENT

Sprayhood	yes
Cockpit cover	yes
Cockpit cushions	yes
Cockpit table	fixed (with extension top)
Bathing platform	fold-down type
Boarding ladder	yes
Transom door	easy access transom with folding down bathingplatform
Deck shower	hot + cold
Anchor	CQR Plough
Anchor chain	apprx 30 mtr
Windlass	electrical Lewmar 12v
Dinghy	inflatable Zodiac Nautic Cadet 270 Aero (2021, optional)
Outboard	Yamah 4 hp 4-s troke(2021, optional)
Outboard support	yes
Sea railing	wire



BAVARIA 32 CRUISER

Grab rail (superstructure)	stainless steel
Pushpit	yes
Pulpit	yes
Life raft	container
Life raft (pers)	4
Last life raft survey	out of date
Fenders	yes
Mooring lines	yes
Clock - barometer	yes
Fire extinguisher	yes

RIGGING

Rigging	fractional 7/8
Standing rigging	wire (2010)
Brand mast	Seldén
Material mast	aluminium
Mainsail cover	+ Lazy Jacks
Fully battened mainsail	(2020)
Genoa	(2020)
Genoa furler	Furlex 200S
Reefing System	slabreefing
Backstay adjuster	mechanical
Boomvang	Seldén Rodkicker
Genoa sheetwinches	2 x Lewmar ST30
Halyard winches	1 x Lewmar ST16



BAVARIA 32 CRUISER



BAVARIA 32 CRUISER



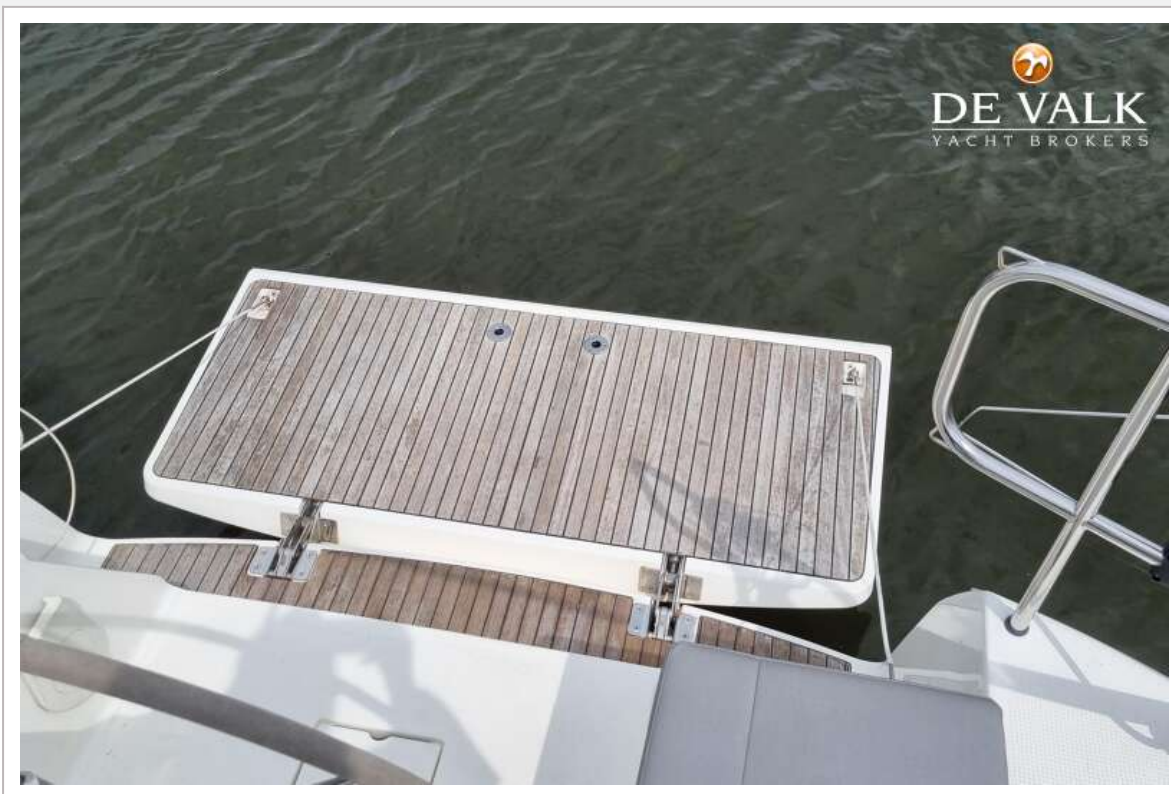
BAVARIA 32 CRUISER



BAVARIA 32 CRUISER



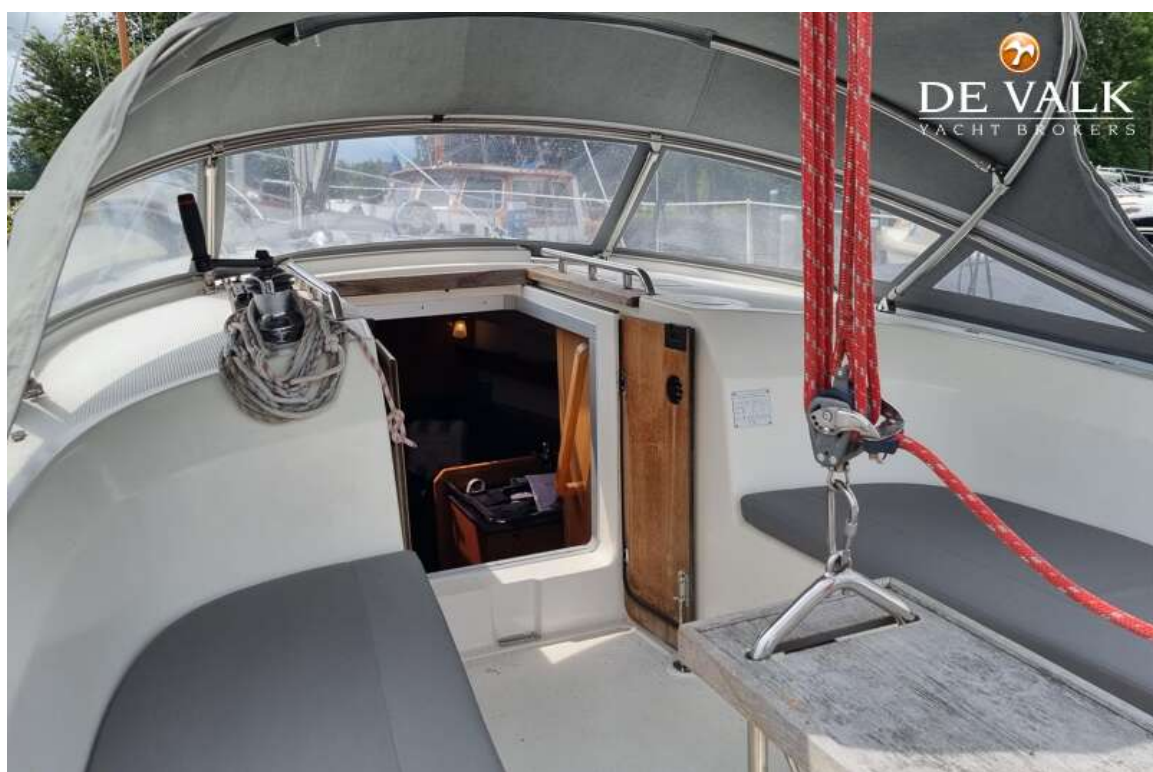
BAVARIA 32 CRUISER



BAVARIA 32 CRUISER



BAVARIA 32 CRUISER



BAVARIA 32 CRUISER



BAVARIA 32 CRUISER



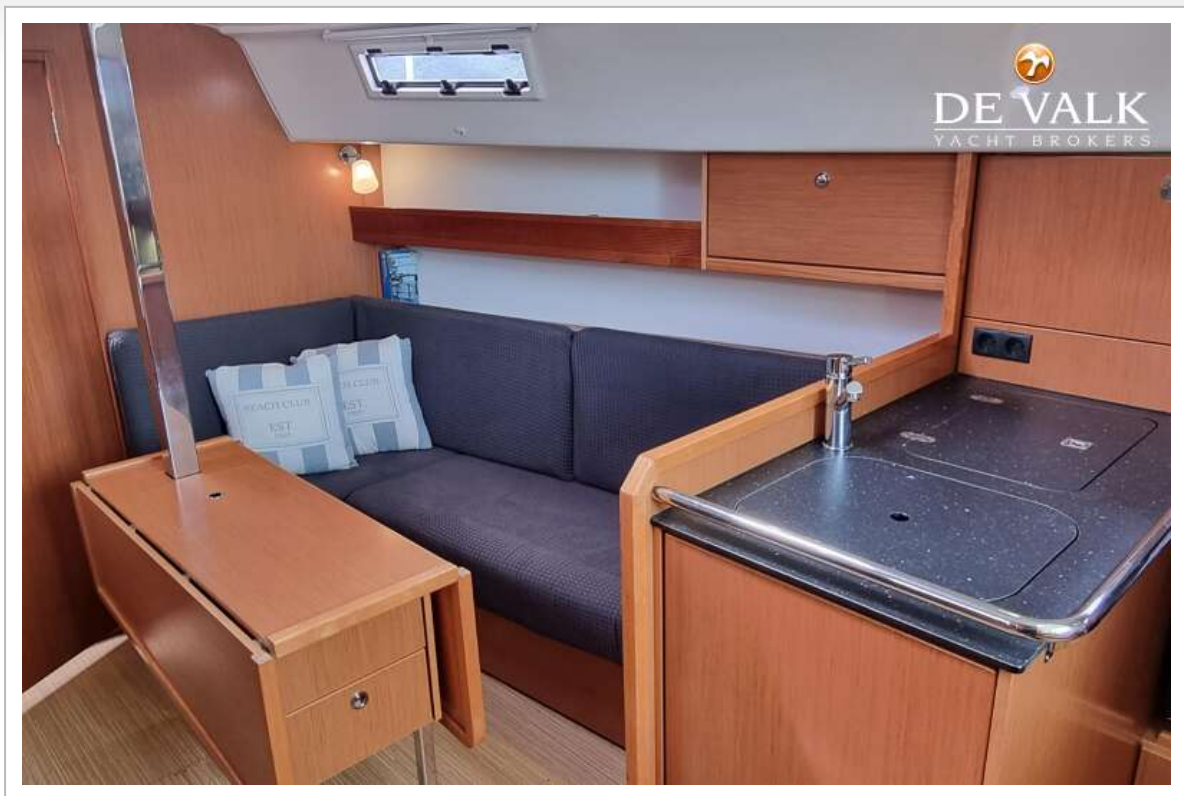
BAVARIA 32 CRUISER



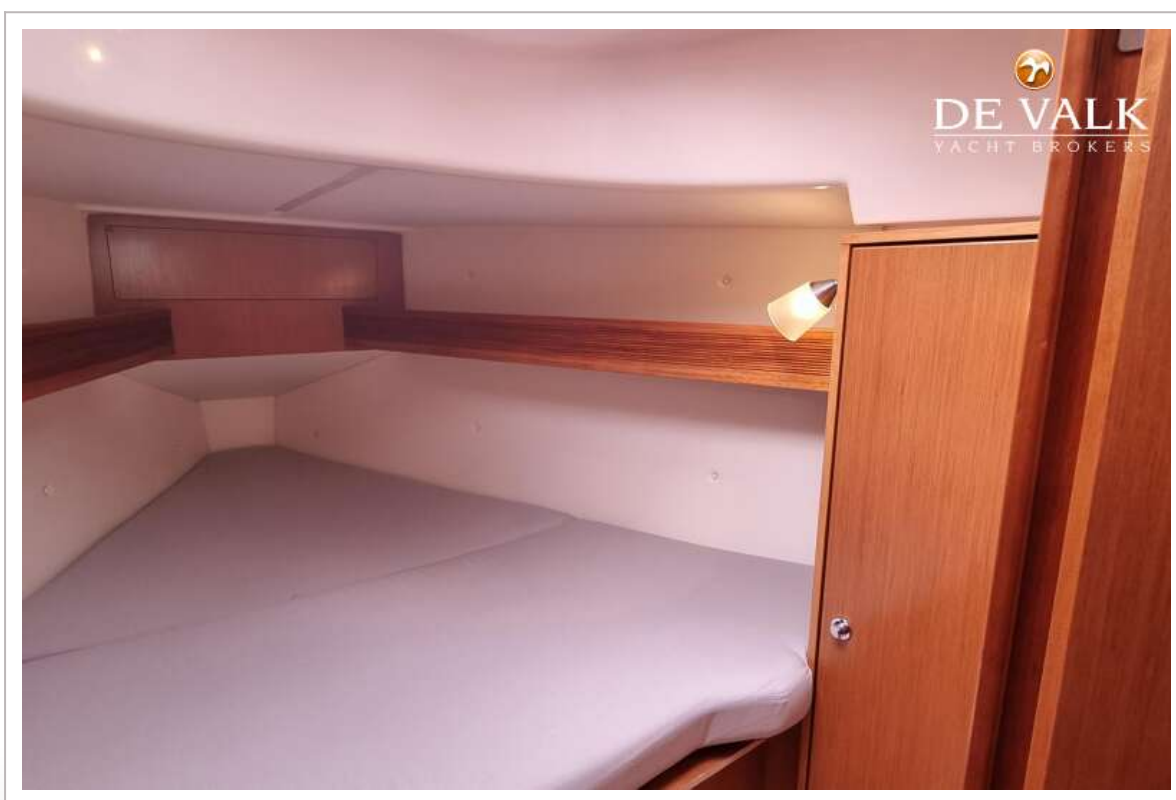
BAVARIA 32 CRUISER



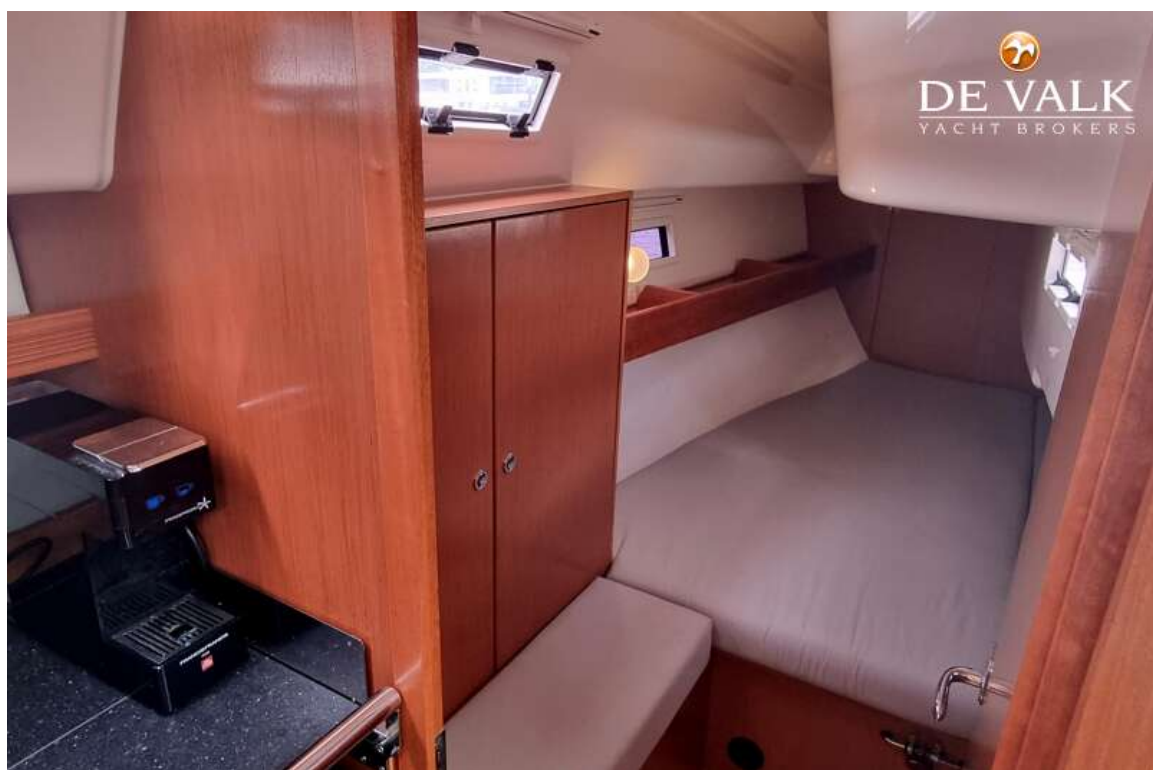
BAVARIA 32 CRUISER



BAVARIA 32 CRUISER



BAVARIA 32 CRUISER



BAVARIA 32 CRUISER



BAVARIA 32 CRUISER



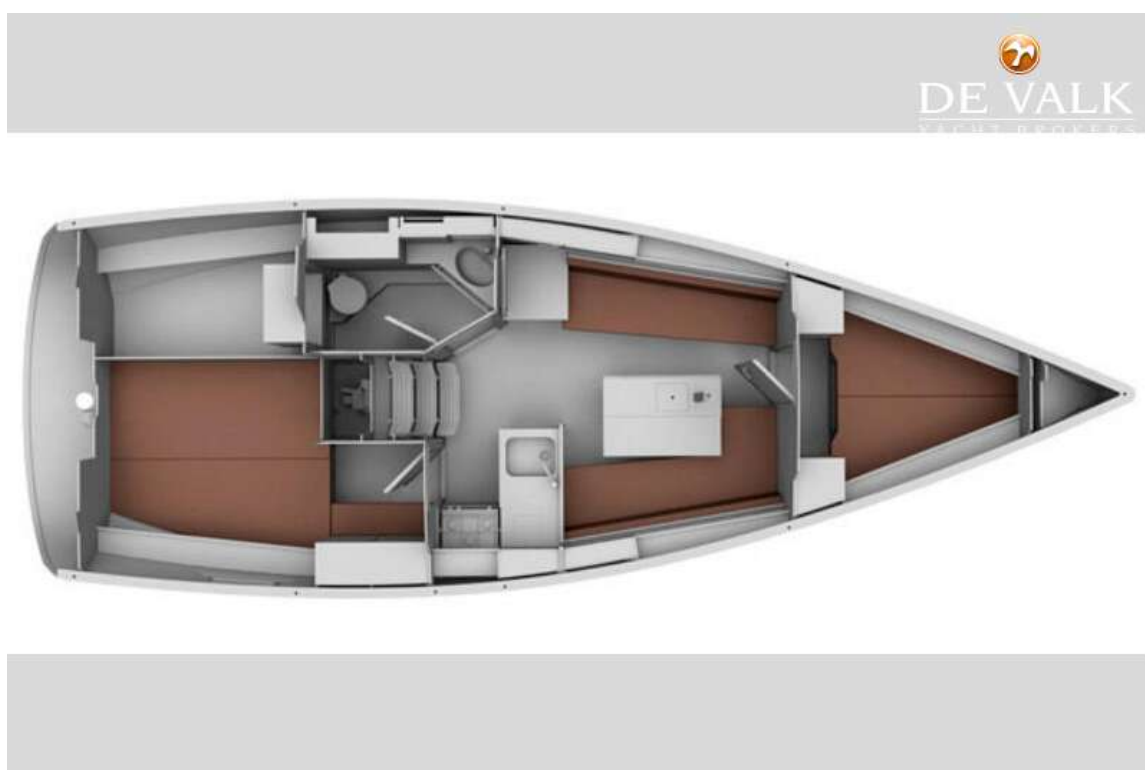
BAVARIA 32 CRUISER



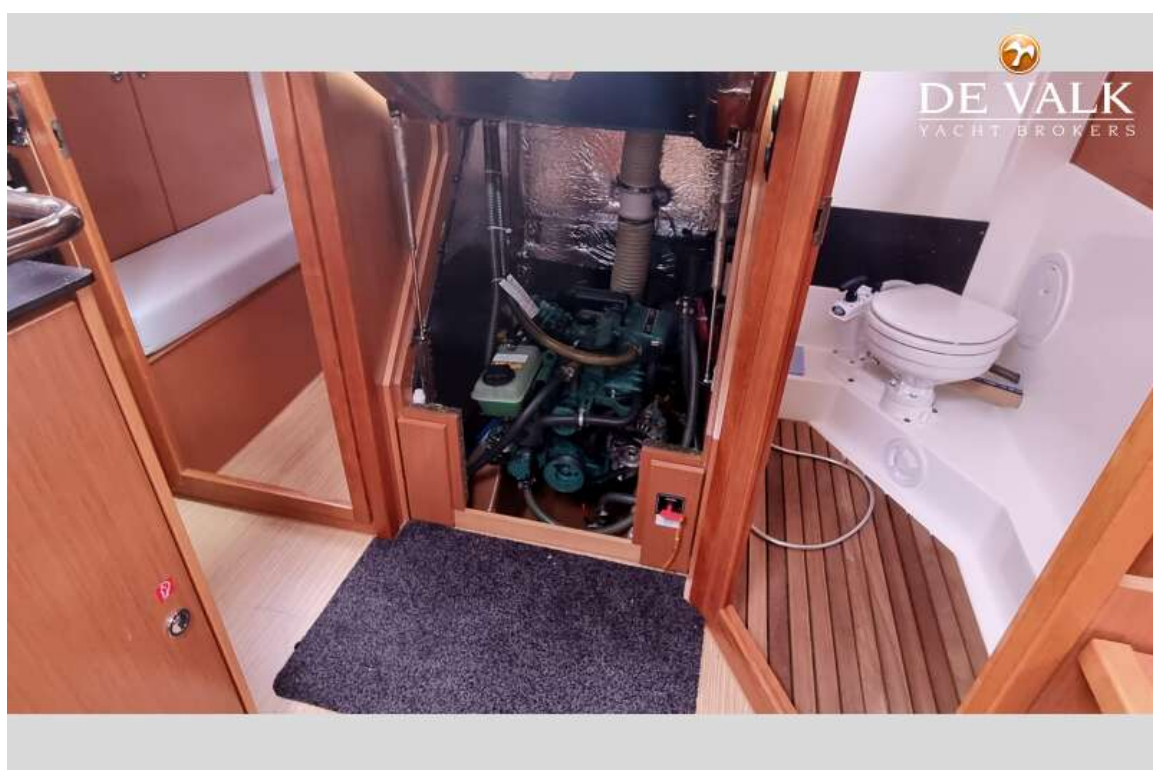
BAVARIA 32 CRUISER



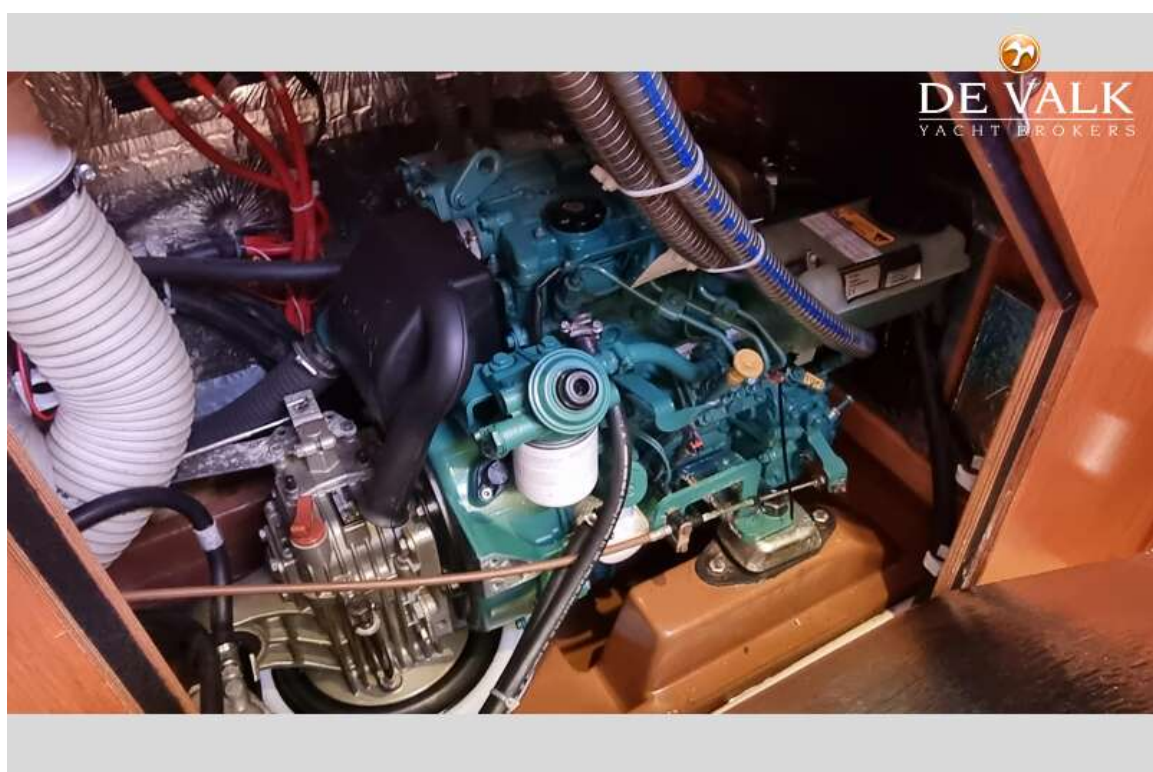
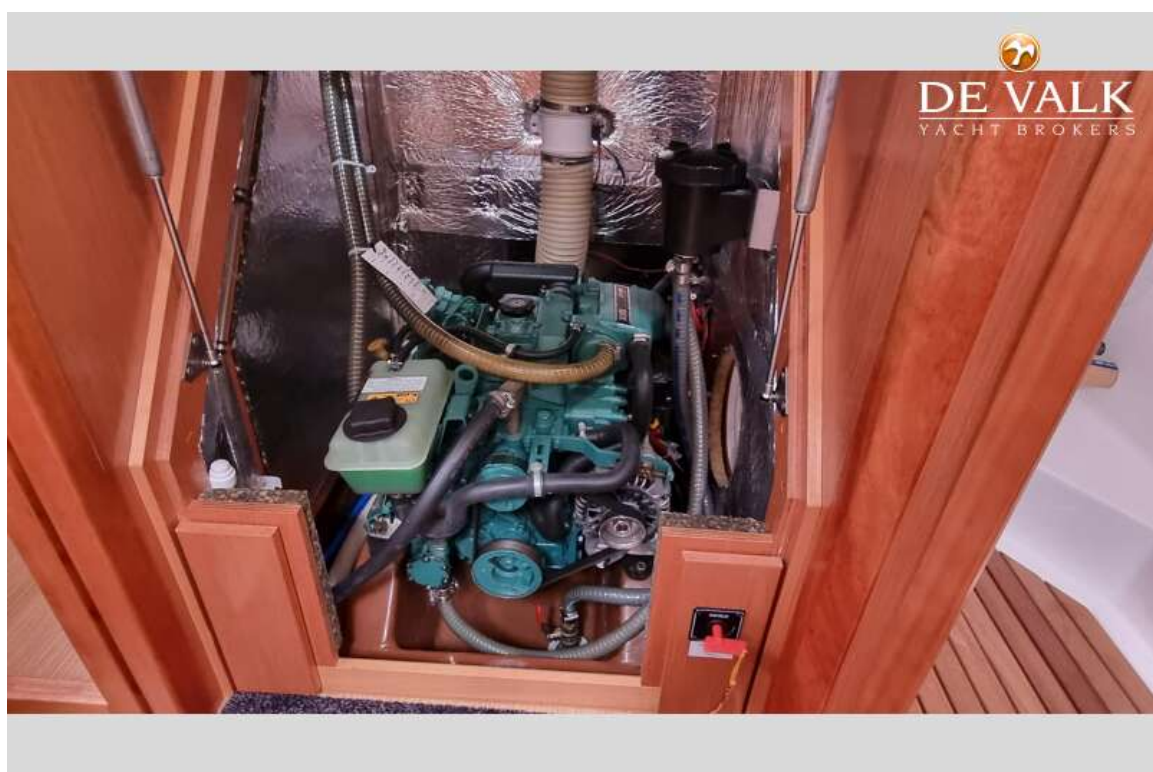
BAVARIA 32 CRUISER



BAVARIA 32 CRUISER



BAVARIA 32 CRUISER



BAVARIA 32 CRUISER

