



DE VALK
YACHT BROKERS



SUNBEAM 34



DE VALK
YACHT BROKERS

BROKERAGE | CHARTER | BERTHS | FINANCE | INSURANCE | YACHT MANAGEMENT

SUNBEAM 34

BROKER'S COMMENTS

Designed by Anton de Dood Miglitsch and built by Schöchl Yachtbau in Austria, this sailing yacht offers excellent sailing performance, safety, and solid build quality. The mahogany joinery creates an elegant atmosphere, while the ergonomic layout gives the interior a light, spacious feel. The yacht will be sold via online auction by Bright Auctions. Auction details: <https://brightauctions.com/en/lot-details/18495>

Hans Visser

SPECIFICATIONS

Dimensions	10.44 x 3.45 x 1.80 (m)	Builder	Schochl Yachtbau
Built	1989	Cabins	2
Material	GRP	Berths	5
Engine(s)	1 x Yanmar 3GM30F diesel	Hp/Kw	24.00 (hp), 17.66 (kw)
Asking price	€ 10.000 (VAT Paid)	Lying	at sales office

CONTACT

Sales office	De Valk Hindeloopen B.V.	Telephone	+31 514 52 40 00
Address	Oosterstrand 1 8713 JS Hindeloopen NL	E-mail	hindeloopen@devalk.nl

DISCLAIMER

These particulars are given in good faith as supplied but cannot be guaranteed.



SUNBEAM 34

GENERAL

Model	SUNBEAM 34
Type	sailing yacht
LOA (m)	10,44
LWL (m)	8,66
Beam (m)	3,45
Draft (m)	1,80
Air draft (m)	14,00
Headroom (m)	1,90
Year built	1989
Launched	1989
Builder	Schochl Yachtbau
Country	Austria
Designer	Anton de Dood Miglitsch
Displacement (t)	5,8
Hull material	GRP
Hull colour	beige
Hull shape	round-bilged
Keel type	fin keel
Superstructure material	GRP
Rubbing strake	wood
Deck material	GRP
Deck finish	teak Original needs service
Superstructure deck finish	teak
Cockpit deck finish	teak Seats replaced in 2010
Antifouling (year)	2024
Window frame	aluminium
Window material	perspex
Deckhatch	4 x lewmar 2, large, 2 x small one with blind
Portholes	2 x
Fuel tank (litre)	stainless steel 2012 new tank 140 ltr. cleaned spring 2025



Level indicator (fuel tank)	yes
Freshwater tank (litre)	stainless steel 240 ltr.
Level indicator (freshwater)	yes
Wheel steering	yes
Emergency tiller	yes

ACCOMMODATION

Cabins	2
Berths	5
Interior	mahogany
Layout	Private with 2 cabins and seats in Salon
Floor	teak and holly
Open cockpit	yes
Saloon	yes
Headroom saloon (m)	1,85
Heating	diesel ducted hot air Eberspacher DI3 needs service
Chart table	yes
Aft Cabin	yes
Sliding door to cockpit	yes
Galley	L shaped
Countertop	wood
Sink	stainless steel Double
Cooker	calor gas Eno 3 burner
Oven	Integrated
Fridge	12 V 2025 new compressor
Hot water system	220V + engine 2019 Allpa 20 L 500 W
Water pressure system	electrical
Owners cabin	double bed
Bed length (m)	1,70 x 2,00
Wardrobe	hanging and shelves
Bathroom	separate



Toilet	separate
Toilet system	manual Jabsco
Wash basin	in the bathroom
Shower	separate
Guest cabin 1	double bed
Bed length (m)	1,40 x 2,00
Bathroom	shared
Toilet	shared
Shower	shared

MACHINERY

No of engines	1
Make	Yanmar
Type	3GM30F
HP	24
kW	17.66
Fuel	diesel
Maximum speed (kn)	6,5
Cruising speed (kn)	5,5
Consumption (l/hr)	2,5
Engine cooling system	freshwater heat exchanger
Drive	sail-drive
Saildrive seal	yes
Engine controls	mechanical
Propeller type	fixed
Propeller blades	2
Manual bilge pump	yes
Electric bilge pump	yes
Electrical installation	12 V DC and 230 V AC
Batteries	Total 3 x
Start battery	2024 1x Exide 12 V 70Ah



Service battery	2 x Exide 12 V 95 Ah each
Battery monitor	For Volts and Amps
Battery charger	C tec 12 V & Mastervolt 12 V 6Ah for startbattery
Shorepower	with cable

NAVIGATION

Compass	C- Plath
Depth sounder	Raymarine 2019
Log	2019 Raymarine i50
Windset	2019 Raymarine i50
VHF	Ray 73 Raymarine 2019
Autopilot	2014 Raymarine EV-1
GPS	yes
Plotter	yes
Plotter/GPS	2019 Raymarine Axiom 9
Electronis chart(s)	For IJsselmeer and dutch waters
Navigation lights	yes
Extra info	Plotter can be used inside & outside

EQUIPMENT

Fixed windscreen	yes
Sprayhood	2015
Cockpit cover	2015
Cockpit cushions	yes
Cockpit table	yes
Boarding ladder	yes
Anchor	Delta 15 kg
Anchor chain	50 m 8 mm
Windlass	manual Lofrans royal
Sea railing	yes
Grab rail (superstructure)	yes



Pushpit	yes
Pulpit	yes
Lifebuoy	yes
Fenders	yes
Mooring lines	yes
Spare parts	yes
Tools	yes
Radio-cd player	Sony
Speakers in salon	yes

RIGGING

Rigging	sloop
Standing rigging	wire
Material mast	aluminium
Spreaders	2 sets
Mainsail	yes
Mainsail cover	Zwaan
Cutterstay	Removable 2nd inner headsail
Genoa	2023 Apollo Sails Tri radial dacron 33.6m2
Genoa furler	Furlex manual
Gennaker	yes
Staysail	yes
Stormjib	yes
Reefing System	slabreefing
Backstay adjuster	mechanical
Boomvang	tackle
Primary sheet winch	2 x Lewmar 43 2 Sp St
Secondary sheet winch	1 x Lewmar 16 Starboard
Halyard winches	1 x meissner 21, 1 x lewmar 7 single speed
Reefing winch	1 x lewmar 16
Multifunctional winches	2 x lewmar 16



SUNBEAM 34

Spi-pole

aluminium Telescopic on deck

Extra info

Several easylock stoppers for various lines



SUNBEAM 34



BROKERAGE | CHARTER | BERTHS | FINANCE | INSURANCE | YACHT MANAGEMENT

DE VALK
YACHT BROKERS



**This yacht will be auctioned,
for further details please visit www.devalk.nl**

**Dit schip zal worden geveild,
voor meer informatie gaat u naar www.devalk.nl**

**Dieses Schiff wird versteigert,
für weitere informationen besuchen Sie www.devalk.nl**

WWW.DEVALK.NL



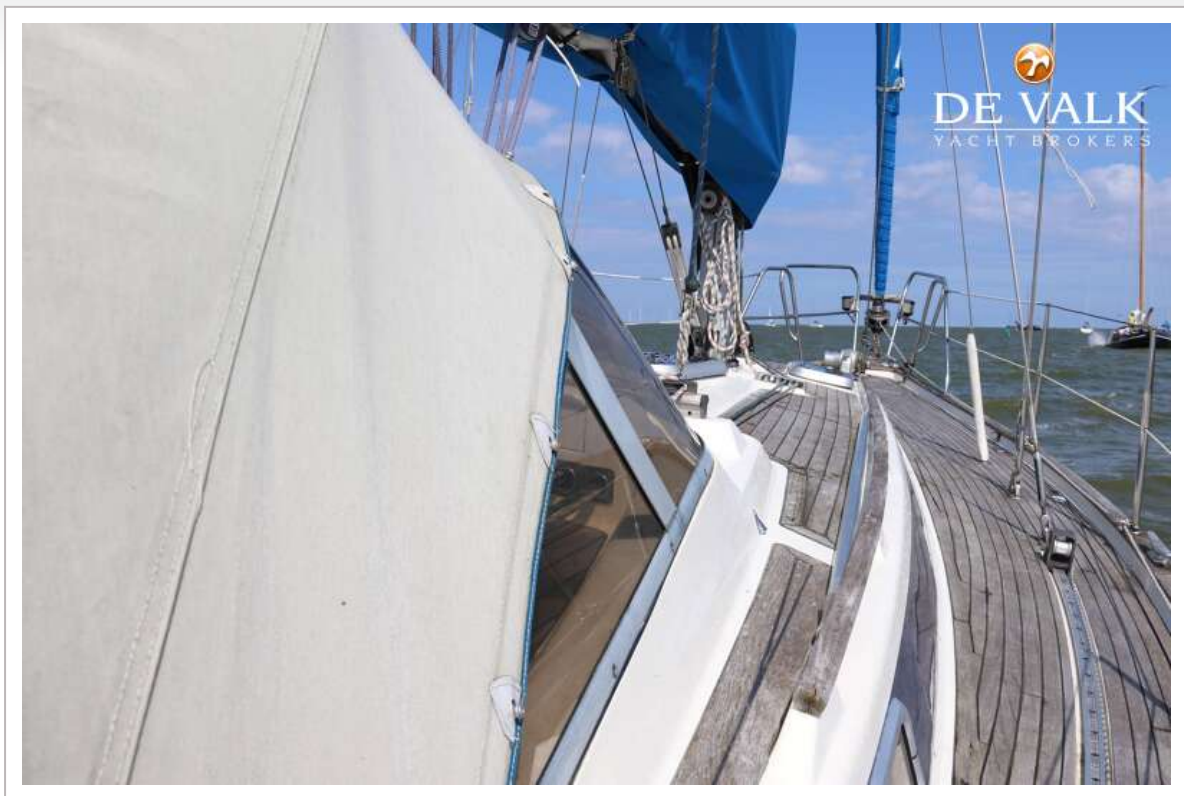
DE VALK
YACHT BROKERS



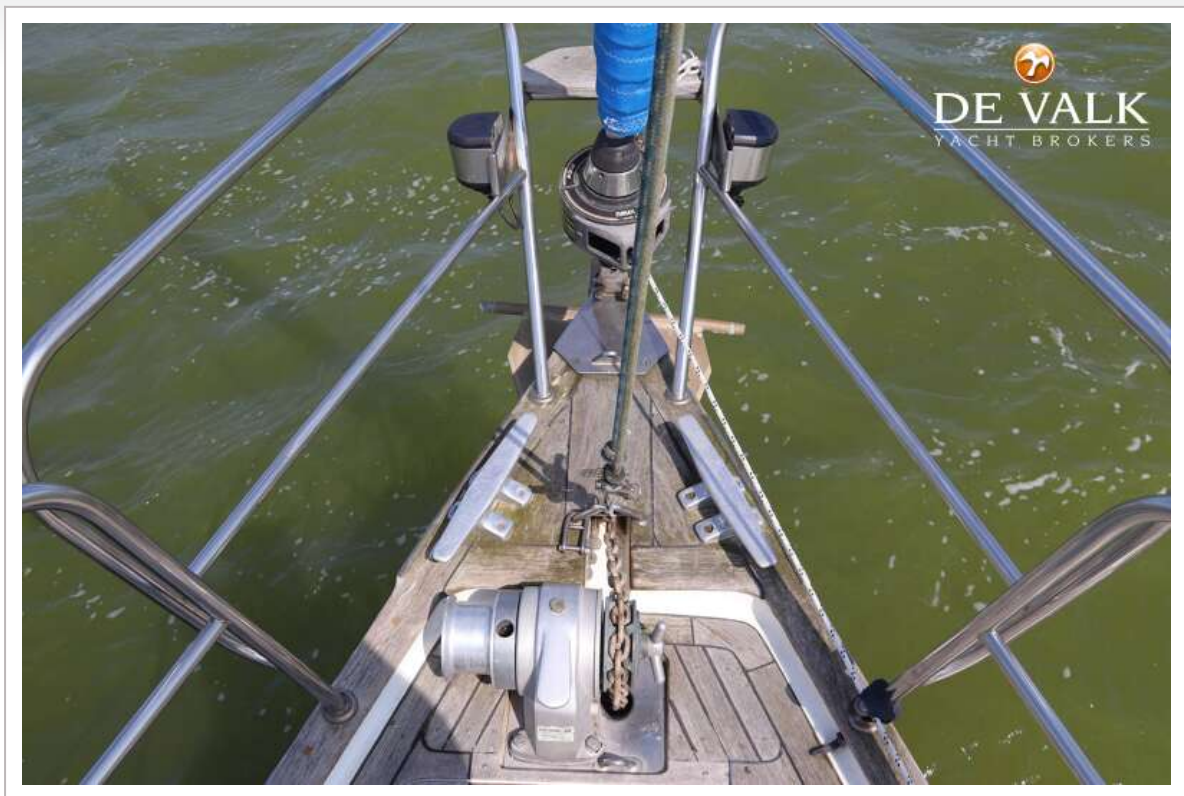
SUNBEAM 34



SUNBEAM 34



SUNBEAM 34



SUNBEAM 34



SUNBEAM 34



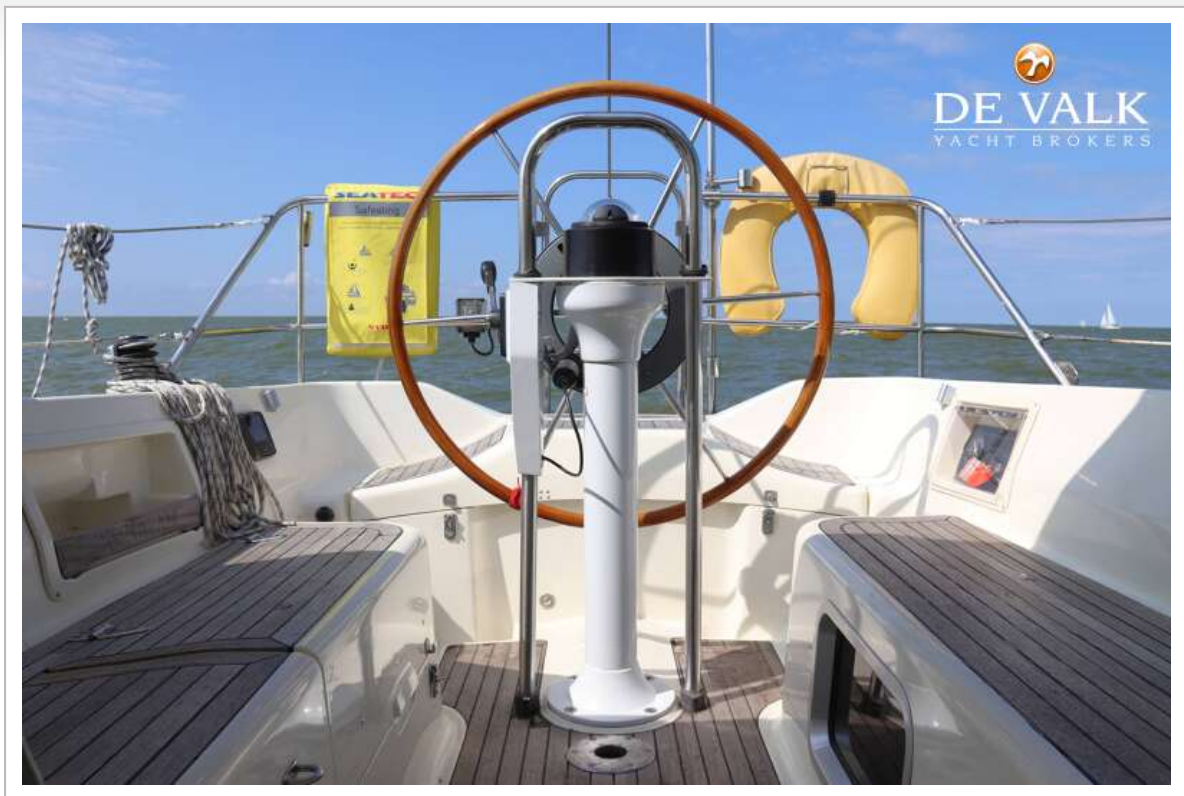
SUNBEAM 34



SUNBEAM 34



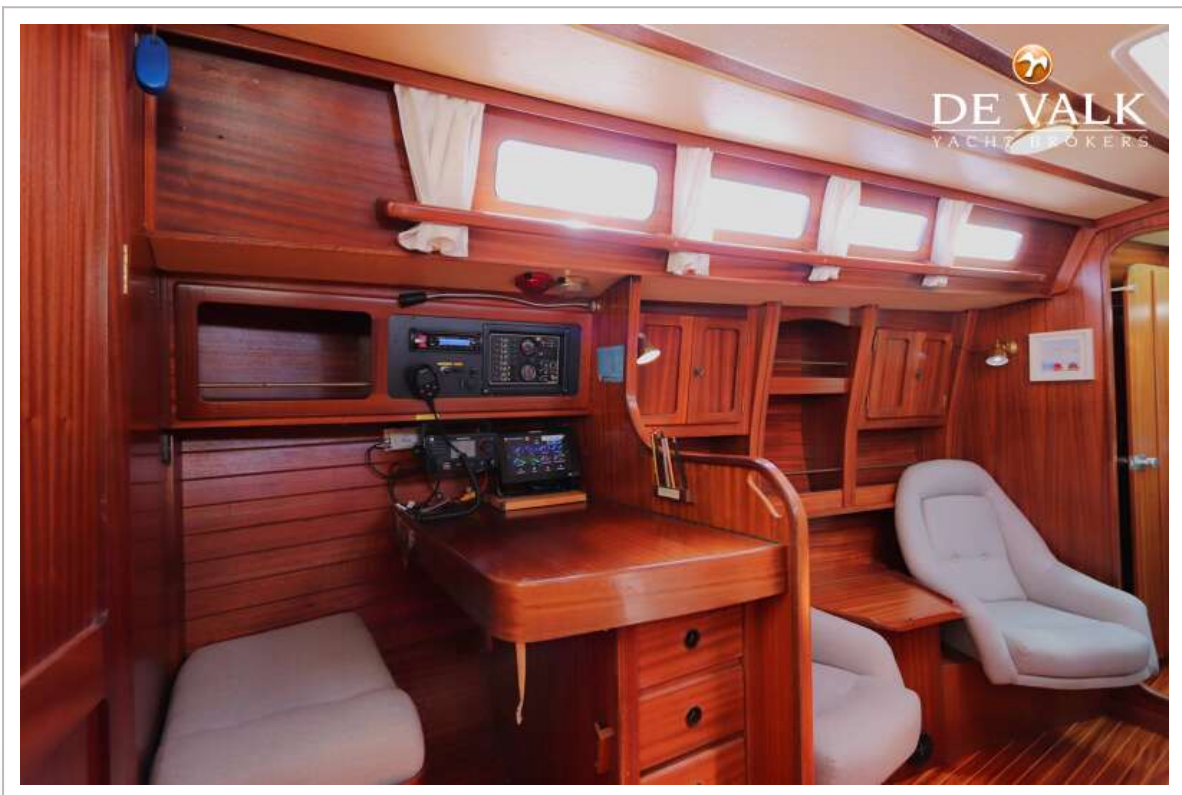
SUNBEAM 34



SUNBEAM 34



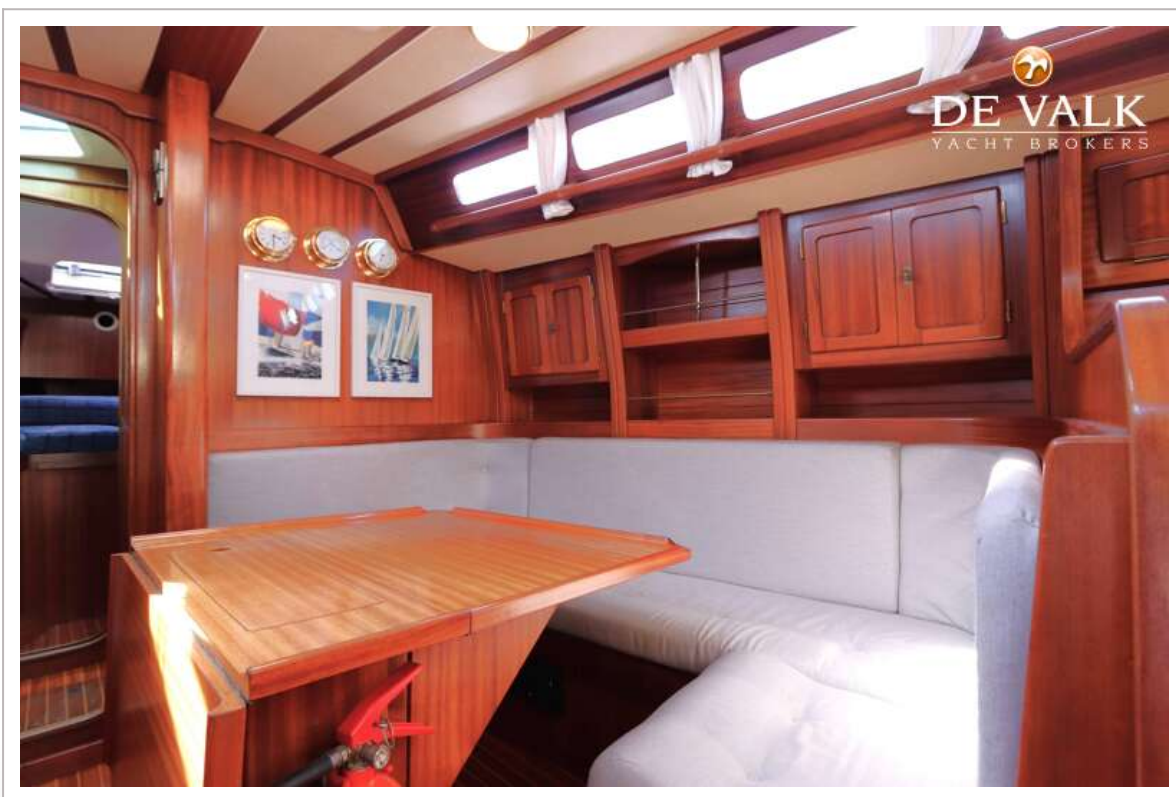
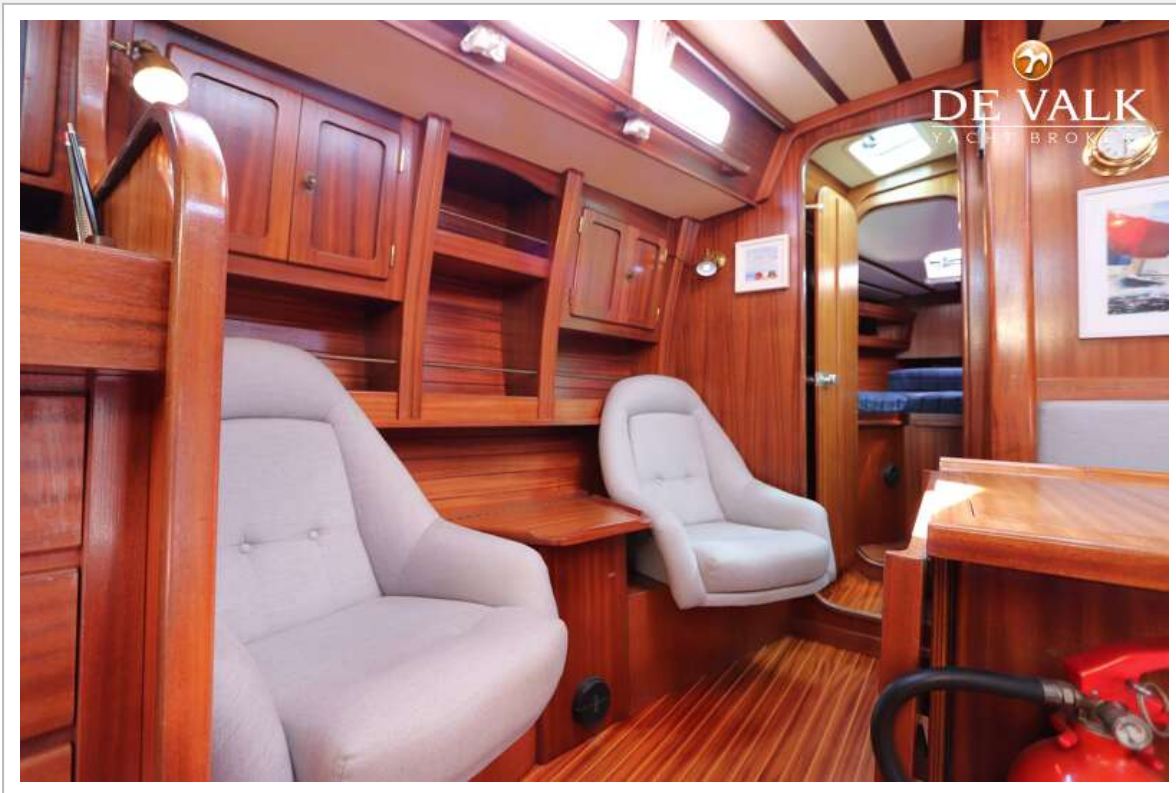
SUNBEAM 34



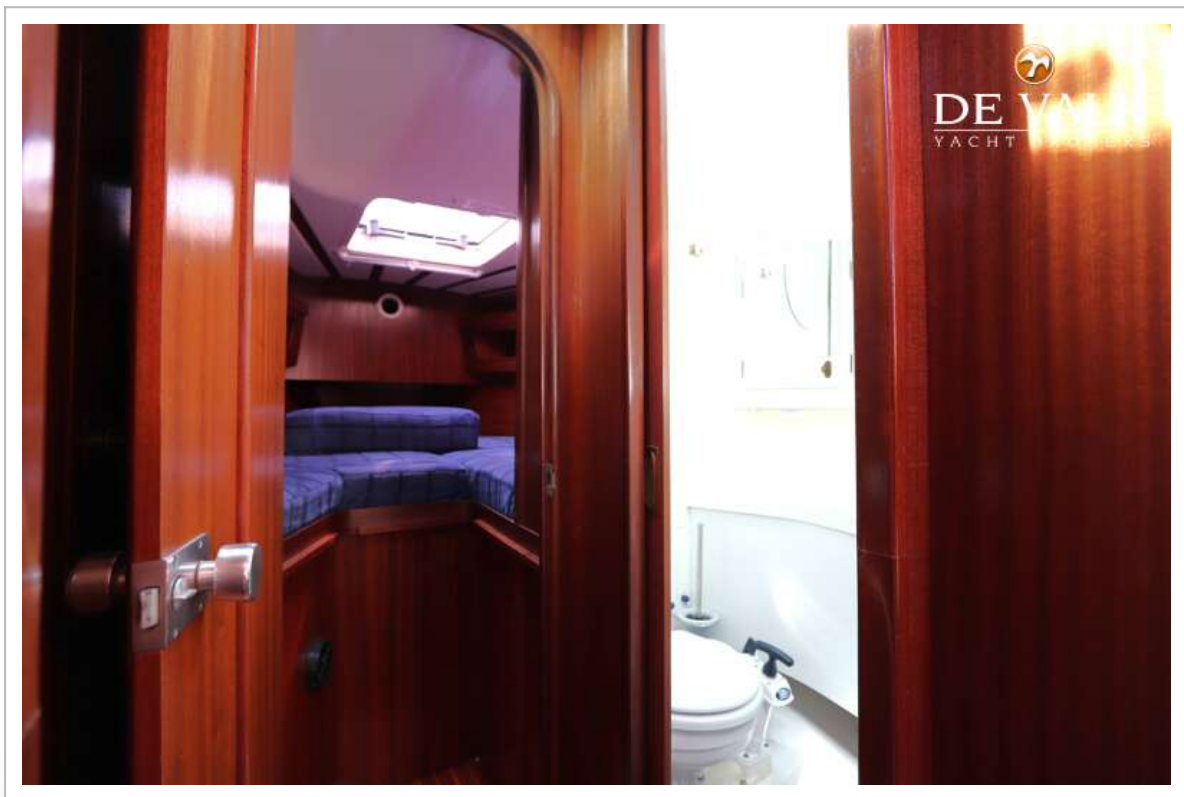
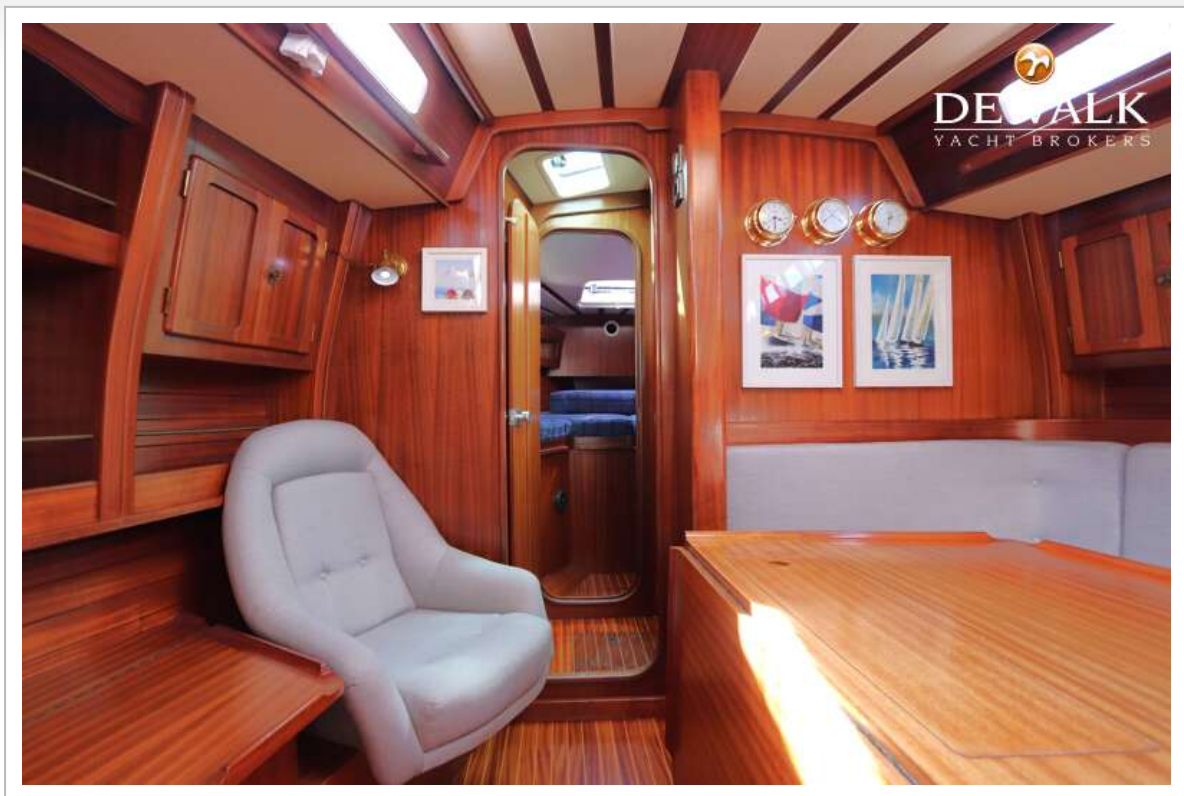
SUNBEAM 34



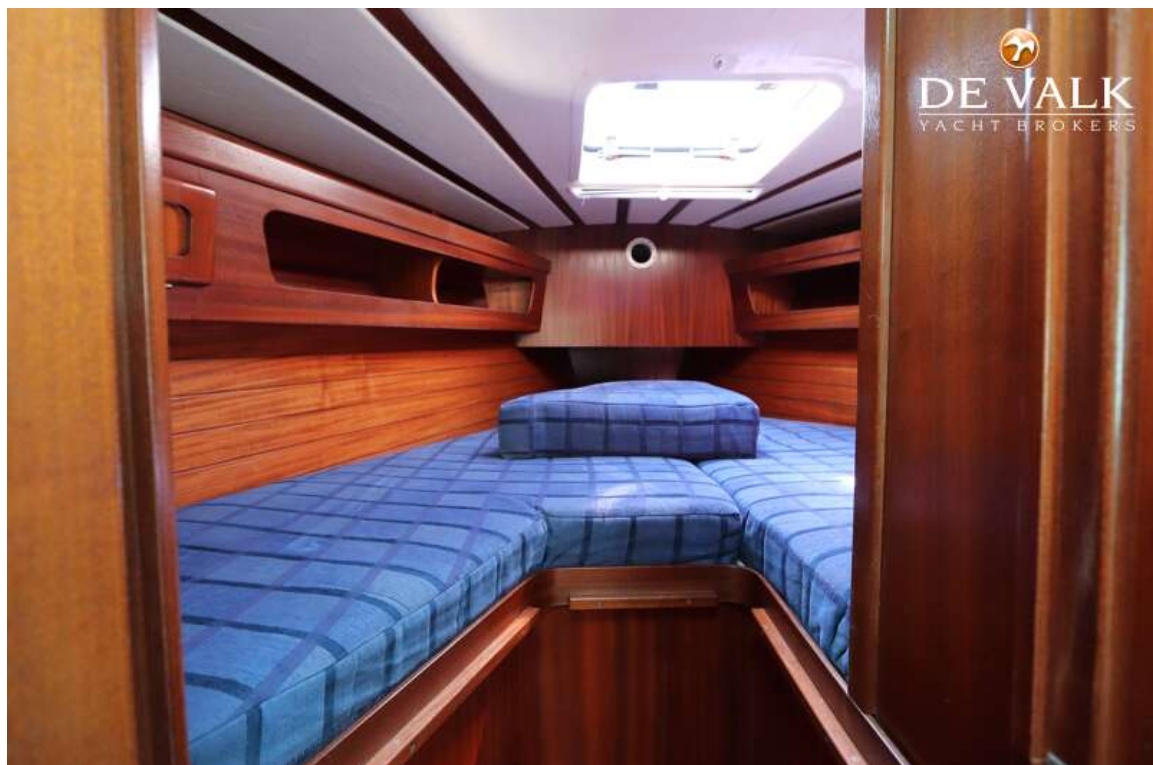
SUNBEAM 34



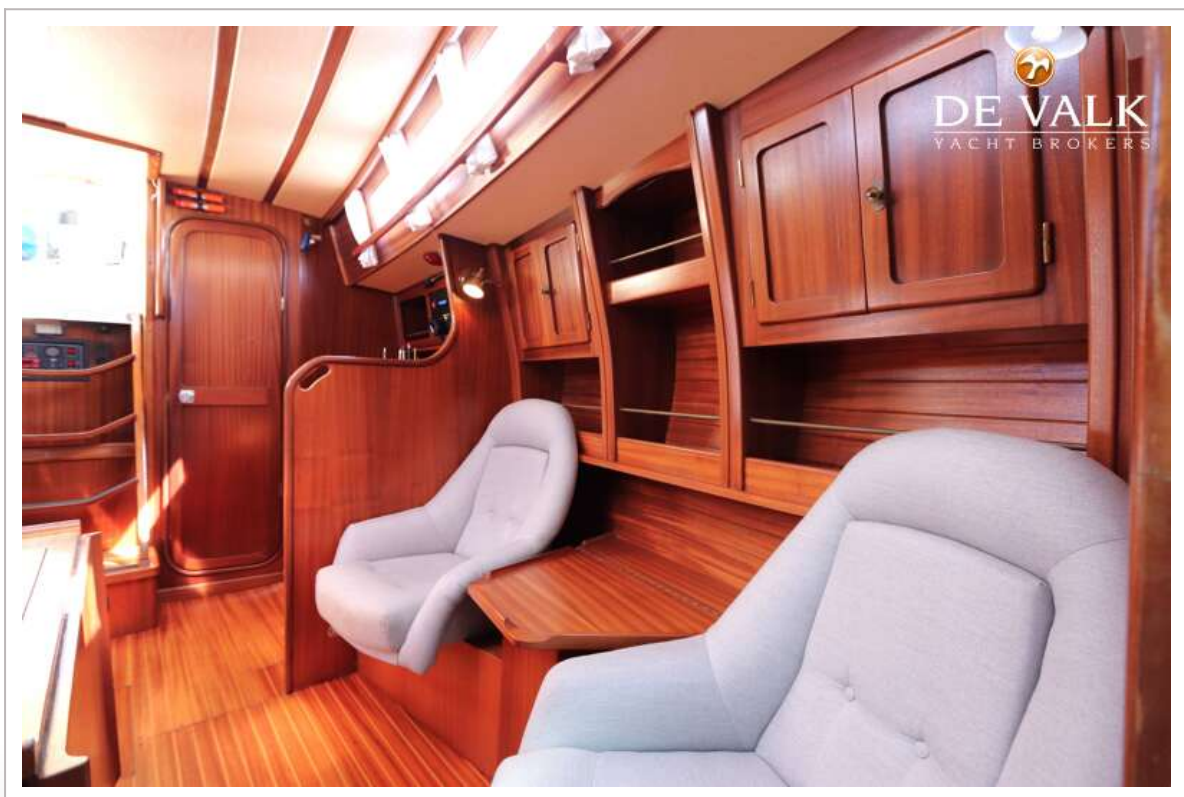
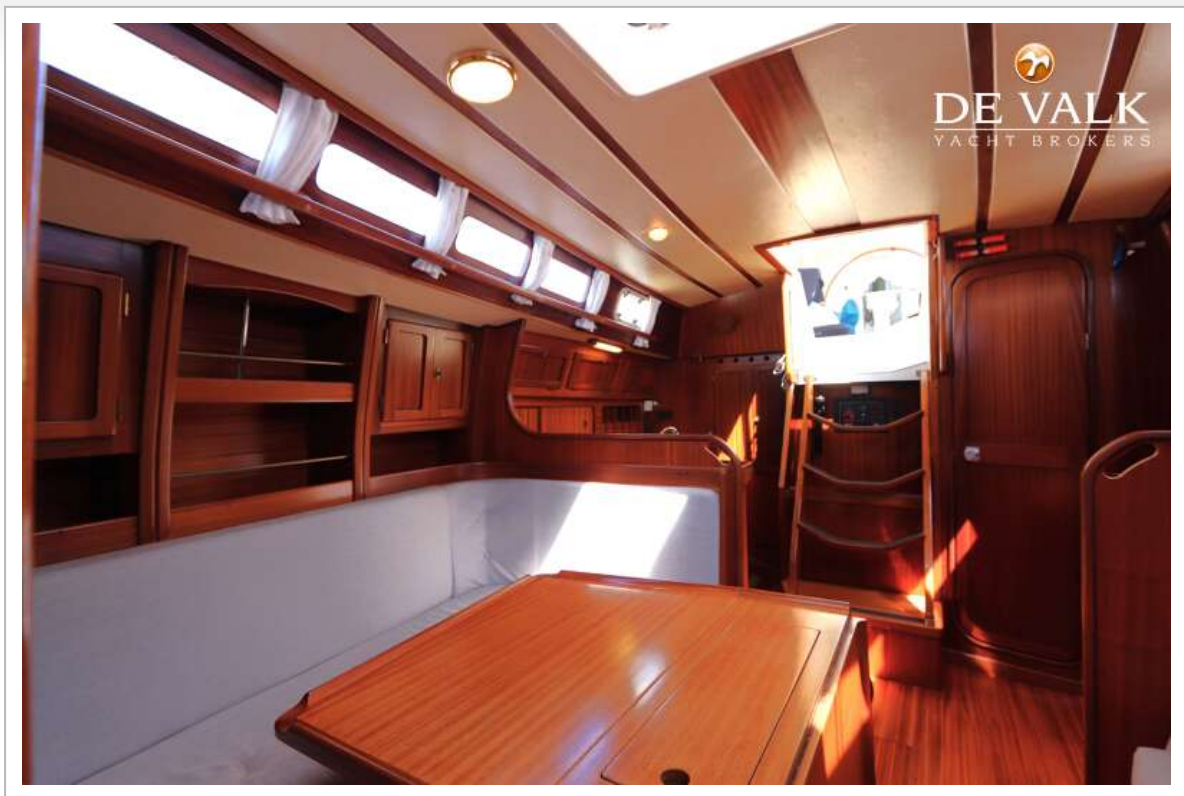
SUNBEAM 34



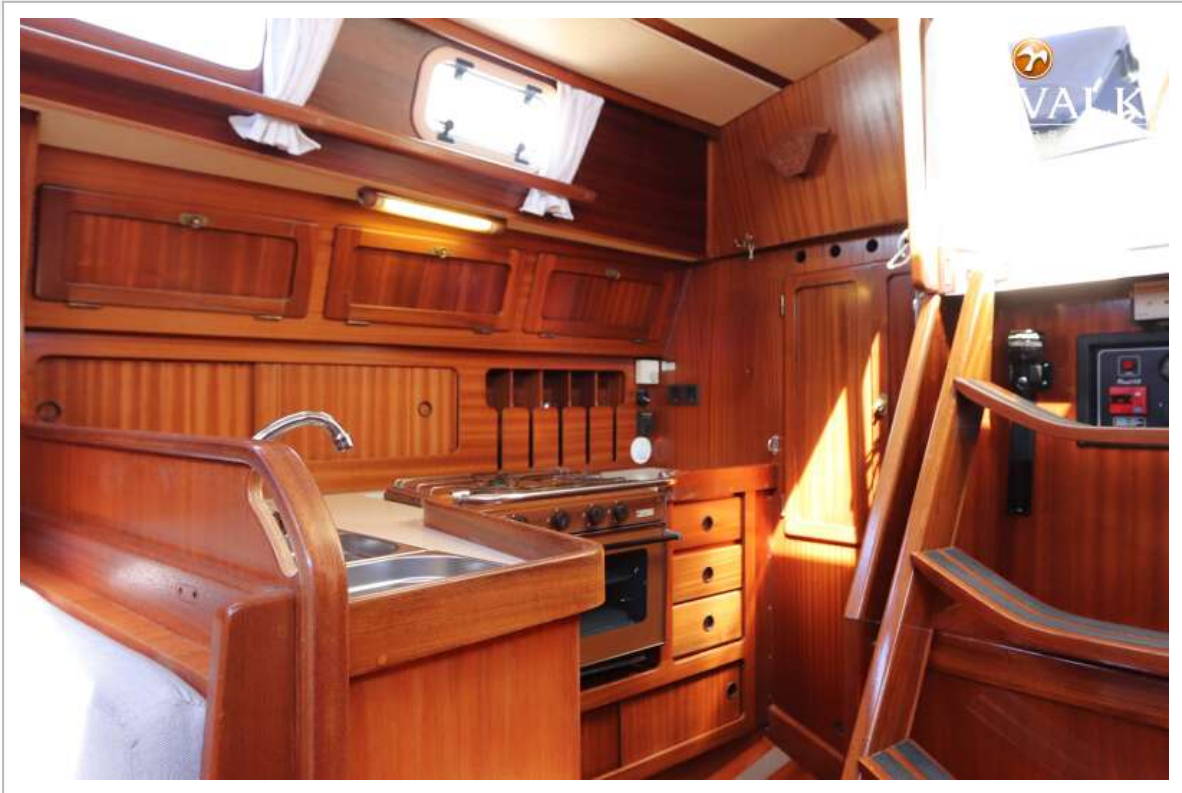
SUNBEAM 34



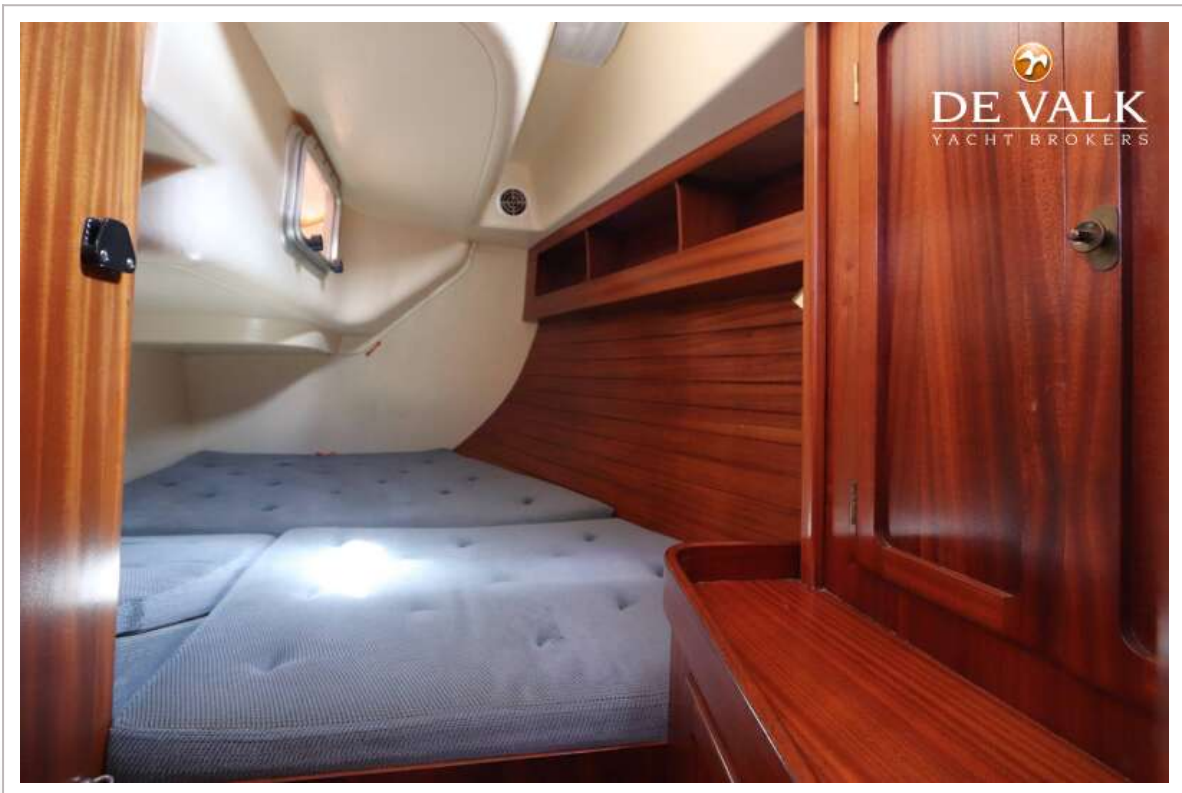
SUNBEAM 34



SUNBEAM 34



SUNBEAM 34



SUNBEAM 34

