



HUNTER LEGEND 380



HUNTER LEGEND 380

BROKER'S COMMENTS

The Hunter 380 was designed as an exceptionally comfortable cruiser with outstanding performance and easy handling from within the cockpit. The sail plan features a large in mast furling mainsail and an anodized B&R double spreader fractional rig with the easy-to-sail Selden furling system headsail with additional cruising chute. The absolute highlight of this Hunter series, which was only built for a short time, was the huge and stable Targa bracket, which ensured that the mainsheet never got in the way of anyone, and the large traveller, mounted on the bracket, really earned its name.

Oliver Stehula

SPECIFICATIONS

Dimensions	11.35 x 3.84 x 1.52 (m)	Builder	Hunter Marine (USA)
Built	1999	Cabins	2
Material	GRP	Berths	6
Engine(s)	1 x Yanmar 3JH2E diesel	Hp/Kw	36.00 (hp), 26.50 (kw)
Asking price	sold (VAT)	Lying	contact Palma

CONTACT

Sales office	De Valk Palma	Telephone	+34 971 40 29 11
Address	Port. Cala Nova, Avda. Joan Miro, 327 07015 Palma de Mallorca ES	E-mail	palma@devalk.nl

DISCLAIMER

These particulars are given in good faith as supplied but cannot be guaranteed.



HUNTER LEGEND 380

GENERAL

Model	HUNTER LEGEND 380
Type	sailing yacht
LOA (m)	11,35
LWL (m)	9,75
Beam (m)	3,84
Draft (m)	1,52
Air draft (m)	18,14
Headroom (m)	1,98
Year built	1999
Launched	2000
Builder	Hunter Marine (USA)
Country	U.S.A.
Designer	Hunter Marine Team
Displacement (t)	7,3
CE norm	A
Hull material	GRP
Hull colour	white
Hull shape	Glass Reinforced Plastic, Kevlar reinforced
Keel type	wing keel
Superstructure deck finish	non-skid moulded in
Cockpit deck finish	teak
Antifouling (year)	May 2023
Fuel tank (litre)	110 l
Level indicator (fuel tank)	Gauge
Freshwater tank (litre)	280 l
Blackwater tank (litre)	121 l
Wheel steering	chain steering
Emergency tiller	yes

ACCOMMODATION



HUNTER LEGEND 380

Cabins	2
Berths	6
Heating	Eberspacher 3DLC compact Heater
Sink	stainless steel
Cooker	calor gas 3 burner
Oven	yes
Microwave	Princess
Fridge	yes
Water pressure system	electrical
Crockery	yes
Owners cabin	double bed
Bed length (m)	yes
Bathroom	shared
Toilet	shared
Toilet system	manual
Wash basin	in the bathroom
Shower	shared

MACHINERY

No of engines	1
Make	Yanmar
Type	3JH2E
HP	36
kW	26.50
Fuel	diesel
Year installed	1999
Maximum speed (kn)	7,58
Engine hours	1050
Engine cooling system	freshwater heat exchanger
Drive	shaft
Engine controls	bowden cable



HUNTER LEGEND 380

Gearbox	mechanical
Propeller type	H5 Autoprop 3 bladed folding propeller
Manual bilge pump	yes
Electric bilge pump	yes
Electrical installation	yes
Start battery	yes
Service battery	4 x 115 Ah
Battery charger	Dolphin 12 V/ 30A
Inverter	Pure Sine Wave 1500 Watt
Shorepower	with cable 240-Volt AC System w/breaker
Extra info	Engine panel, de luxe w/alarms and hour meter

NAVIGATION

Compass	Ritchie Compass (New 2012)
Multi control display	Raymarine MFD A75 with WiFi and integral GPS (new July 2014)
Depth sounder	Autohelm Depth Sounder
Log	Raymarine Speed/Log/Water temperature (replaced 2010)
Windset	Autohelm Wind, Windvane and cable in mast replaced 2022
VHF	Silva S15VHF Radio with GPS and Navtex and stainless steel anten
Autopilot	Autohelm 6000+ Automatic Pilot
GPS	Raymarine GPS
Plotter	Raymarine chart plotter
Radar/plotter	Raytheon RL70 Chart plotter/radar
Navtex	Target Navtex Pro
Electronis chart(s)	Navionics Gold Western Mediterranean charts (new July 2014)
Navigation lights	Navigation light package (All LED)
Extra info	Mast top Anchor light assembly replaced 2022
Extra info	VHF mast top connector replaced May 2023

EQUIPMENT



HUNTER LEGEND 380

Sprayhood	Blue
Bimini	Blue
Sun awning	Between Bimini and Sprayhood
Cockpit cushions	4 individual cushions in blue
Cockpit table	White
Bathing platform	yes
Boarding ladder	stainless steel
Gangway	Aluminium folding Gangway, 2,5 m
Deck shower	On bathing platform
Anchor	Delta 15 kg
Anchor chain	30m
Windlass	electrical Lofranes
Dinghy	inflatable
Sea railing	wire
Life raft	container Mounted on deck in front of sprayhood
Life raft (pers)	6 persons
Lifejackets	6 x
Safety harness	2 x
Danbuoy	yes
Rope cutter	yes
Horn	air pressure
Radar reflector	yes
Fenders	yes
Mooring lines	yes
Tools	yes
Radio-cd player	Pioneer with MP3 and USB
Cockpit speakers	yes
Speakers in salon	yes

RIGGING

Rigging	fractional B&R
---------	----------------



HUNTER LEGEND 380

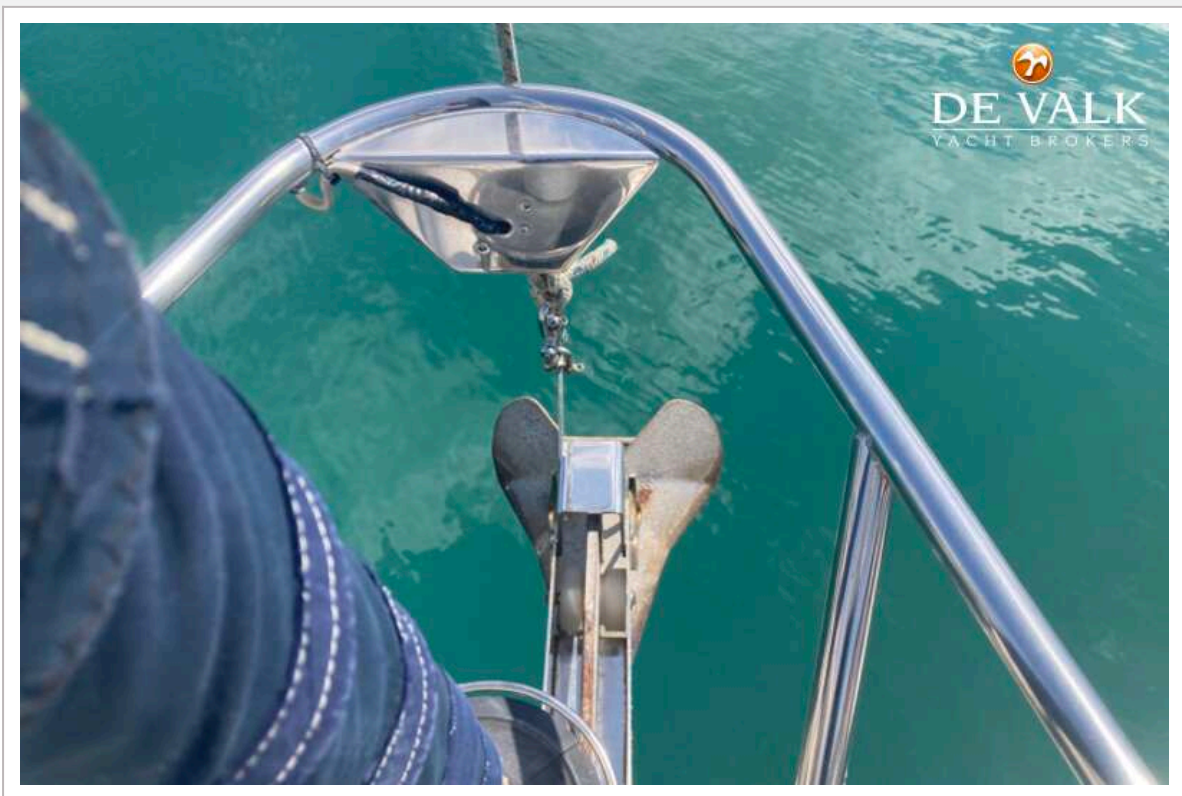
Standing rigging	wire Replaced May 2023
Brand mast	Seldén
Material mast	aluminium
Spreaders	Two pairs
Mainsail	Selden Furling System (full service 2014)
Jib	110% Furling Jib w/UV strip (Furler fully serviced 2014)
Code Zero	Cruising chute with snuffer
Reefing System	main in-mast furling
Boomvang	mechanical and tackle
Primary sheet winch	2 x 2-speed, self-tailing, Lewmar 40
Secondary sheet winch	yes
Spinnaker winch	2 x 2-speed, self-tailing, Lewmar 40
Multifunctional winches	2 x 2-speed, self-tailing, Lewmar 44
Winchcovers	Blue
Spi-pole	aluminium Expandable spinnaker pole attached to mast track
Extra info	Reefing System, Dual Single Loop Line led to cockpit
Extra info	Rigging clutches and organizers, two Sets of 4



HUNTER LEGEND 380



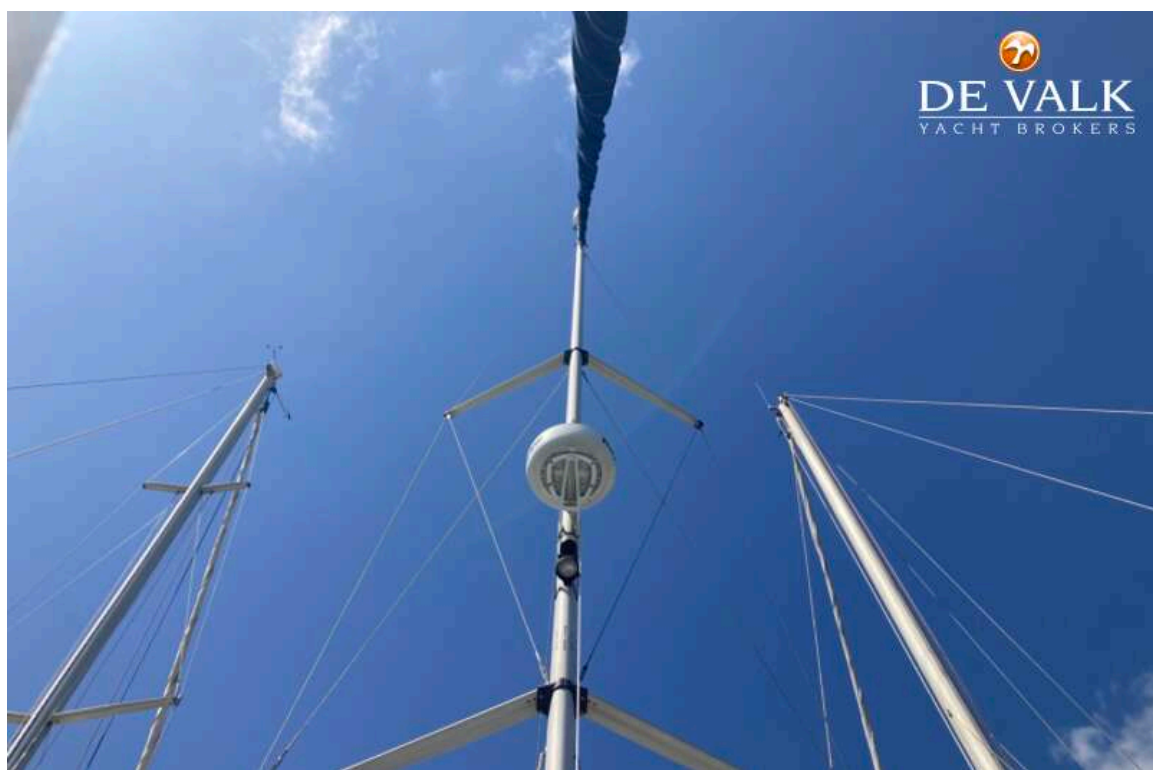
HUNTER LEGEND 380



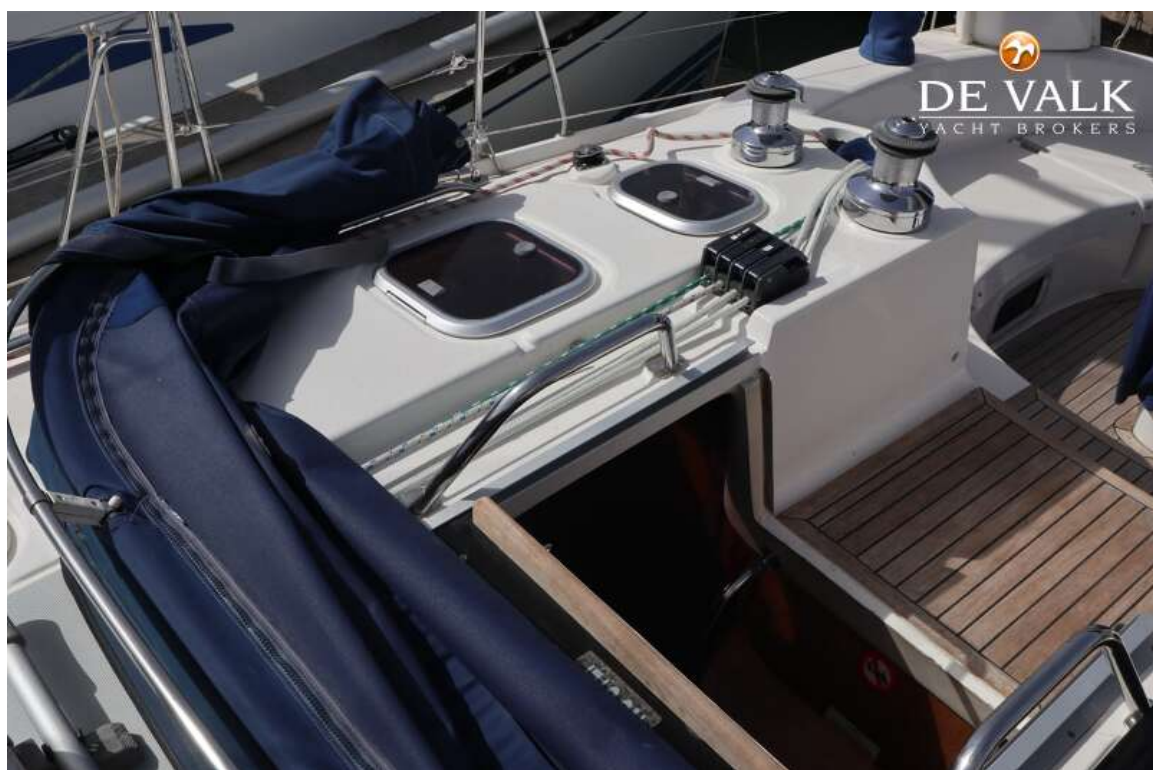
HUNTER LEGEND 380



HUNTER LEGEND 380



HUNTER LEGEND 380



HUNTER LEGEND 380



HUNTER LEGEND 380



HUNTER LEGEND 380



HUNTER LEGEND 380



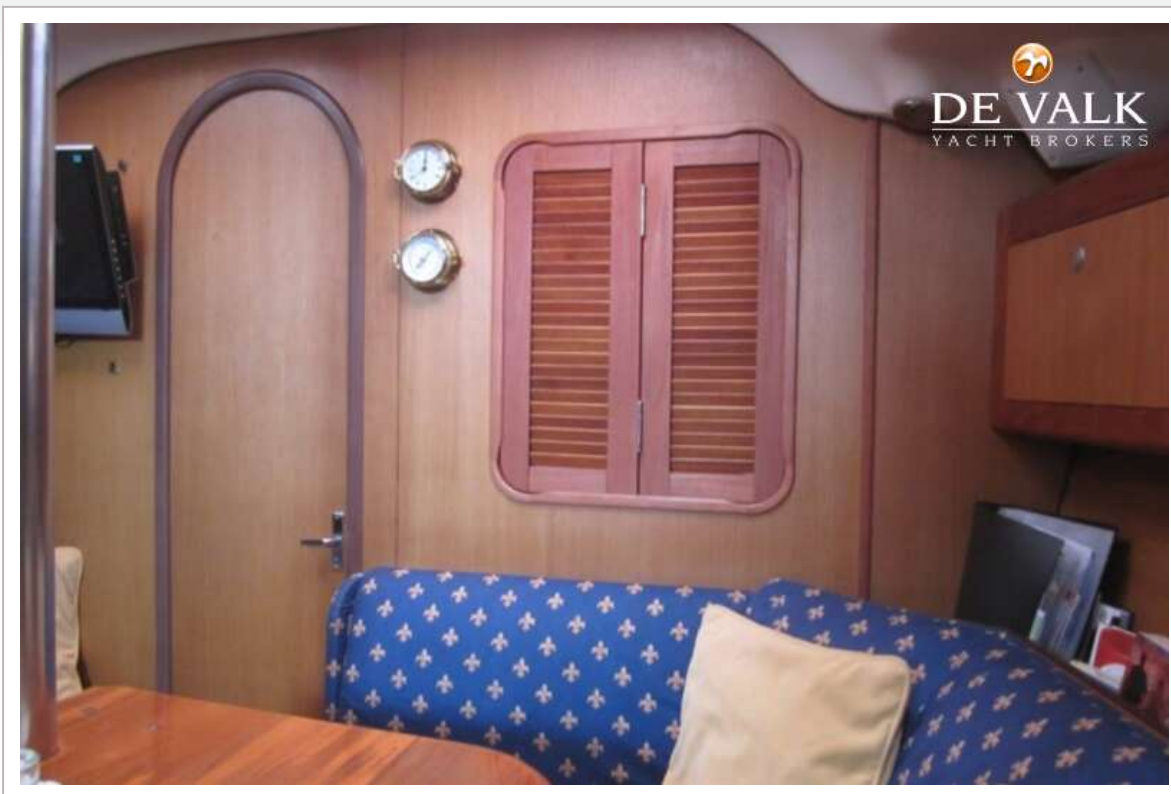
HUNTER LEGEND 380



HUNTER LEGEND 380



HUNTER LEGEND 380



HUNTER LEGEND 380



HUNTER LEGEND 380



HUNTER LEGEND 380





HUNTER LEGEND 380



HUNTER LEGEND 380



HUNTER LEGEND 380

