



## CAMMENGA 61 NORTH SEA TRAWLER

# CAMMENGA 61 NORTH SEA TRAWLER

## BROKER'S COMMENTS

"MY/Hunter", a true example of a traditional steel motor yacht designed by DeVries Lentch and built by Cammenga in Holland, transformed into a completely new look! With her striking baby blue hull, topped by her white superstructure maintains the look of a traditional trawler. A reliable spacious trawler to cruise in style powered by a robust Gardner diesel engine. She meets everything you need at sea and ocean. For those who are looking for a Fancy-Classic, she can be seen in Southern Turkish Riviera in Bodrum.

*Reinier van der Wolf*

## SPECIFICATIONS

<b>Dimensions</b>	18.60 x 4.75 x 1.90 (m)	<b>Builder</b>	Cammenga's Jacht-en Scheepswerf
<b>Built</b>	1967	<b>Cabins</b>	3
<b>Material</b>	Steel	<b>Berths</b>	6
<b>Engine(s)</b>	1 x Gardner diesel	<b>Hp/Kw</b>	172.00 (hp), 126.59 (kw)
<b>Asking price</b>	€ 1.050.000 (VAT Paid)	<b>Lying</b>	elsewhere / Not at sales office

## CONTACT

<b>Sales office</b>	De Valk Monnickendam B.V.	<b>Telephone</b>	+31 (0)299 65 63 50
<b>Address</b>	Hoogedijk 6 1145 PM Katwoude NL	<b>E-mail</b>	monnickendam@devalk.nl

## DISCLAIMER

These particulars are given in good faith as supplied but cannot be guaranteed.



# CAMMENGA 61 NORTH SEA TRAWLER

## GENERAL

Model	CAMMENGA 61 NORTH SEA TRAWLER
Type	motor yacht
LOA (m)	18,60
Beam (m)	4,75
Draft (m)	1,90
Year built	1967
Builder	Cammenga's Jacht-en Scheepswerf
Country	The Netherlands
Designer	De Vries Lentsch
Displacement (t)	37
Hull material	steel
Hull colour	blue - (Baby-Blue)
Hull shape	round-bilged
Superstructure material	steel
Deck material	steel
Deck finish	teak - 5 mm.
Cockpit deck finish	teak
Antifouling (year)	2023
Dorades	6x
Window frame	aluminium
Window material	glass
Deckhatch	3x
Portholes	yes
Fuel tank (litre)	3900
Freshwater tank (litre)	750
Blackwater tank (litre)	750
Wheel steering	+ electronic joystick helm system
Inside helm position	yes
More info on hull	Coppercoat has been applied (3 years from 02-06-2023)



# CAMMENGA 61 NORTH SEA TRAWLER

## ACCOMMODATION

Cabins	3
Berths	6
Layout	1st cabin: on the bow head and shower with a 3-person bathroom and WC next to the galley (guest room) 2. cabin: 3 person vip cabin including bathroom and wc on starboard bow 3. cabin: Stateroom including WC and bathroom to the port right after stairs to galley A total of 8 people can sleep (Starboard and port pull-out bunk beds available )
Saloon	upholstery renewed, furnitures painted
Air-conditioning	yes
Chart table	yes
Aft Cabin	yes
Galley	yes
Countertop	yes
Sink	stainless steel
Cooker	4 burners
Oven	yes
Microwave	yes
Fridge	yes
Hot water system	yes
Water pressure system	electrical
Dishwasher	yes
Owners cabin	French bed
Wardrobe	hanging/drawers/shelves
Bathroom	en suite
Toilet	en suite
Toilet system	electric
Wash basin	yes
Shower	yes
Guest cabin 1	double bed
Wardrobe	hanging and drawers
Toilet	en suite



# CAMMENGA 61 NORTH SEA TRAWLER

Wash basin	yes
Guest cabin 2	bunk bed
Wardrobe	drawers and shelves
Bathroom	yes
Toilet	yes
Wash basin	yes
Ironing facilities	yes
Extra info	all showers and toilets have been renewed.

## MACHINERY

No of engines	1
Make	Gardner
HP	172
kW	126.59
Fuel	diesel
Maximum speed (kn)	10
Cruising speed (kn)	8
Engine hours	5700
Engine cooling system	freshwater heat exchanger
Drive	shaft
Engine controls	electrical
Gearbox	yes
Bowthruster	yes
Electrical installation	12v / 24v / 220v
Generator	Mase
Batteries	4x 4500 Watt Mastervolt Lithium
Battery charger	yes
Inverter	yes
Solar panel	5x (2000W)
Shorepower	with cable
Watermaker	yes



# CAMMENGA 61 NORTH SEA TRAWLER

Stabilizers	fin Koop-Nautic
Trimtabs	yes
Extra info	new leather dashboard + helm chair

## NAVIGATION

Depth sounder	yes
Windset	yes
VHF	yes
Autopilot	yes
Radar	yes
Plotter	yes
Camera	8x : engine, bow, Lazarette, starboard, port hull and aft.

## EQUIPMENT

Bimini	yes
Cockpit cushions	yes
Boarding ladder	Ship side
Gangway	Hydraulic After
Anchor	yes
Chain counter	yes
Windlass	electrical 2000w
Dinghy	3.5 M NOVURANIA
Outboard	yes
Life raft	yes
Life raft (pers)	8
Fenders	yes
Mooring lines	yes
Surround Sound System	cockpit, bow, aft, indoors Bose 5 Zone
Extra info	underwater lighting



# CAMMENGA 61 NORTH SEA TRAWLER

## RIGGING

### Extra info

Original mast, boom and sails have been taken off and kept in storage, to be delivered to her new owner.





CAMMENGA 61 NORTH SEA TRAWLER





CAMMENGA 61 NORTH SEA TRAWLER

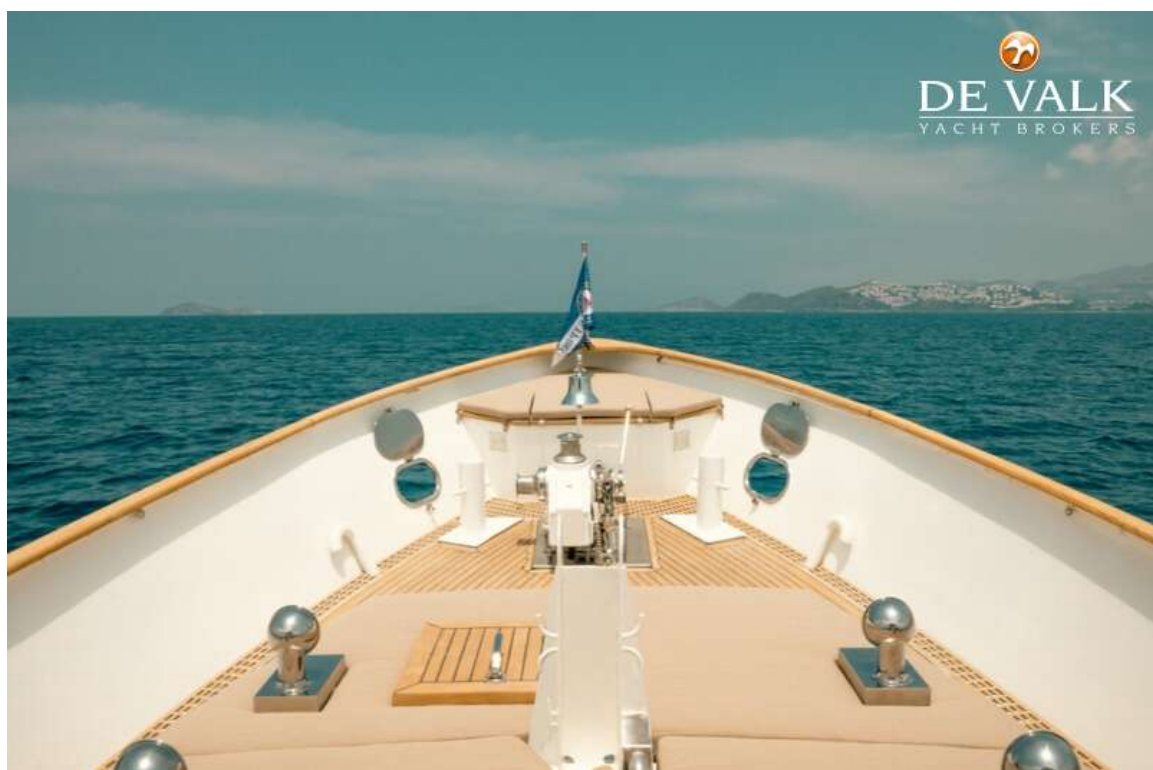




# CAMMENGA 61 NORTH SEA TRAWLER

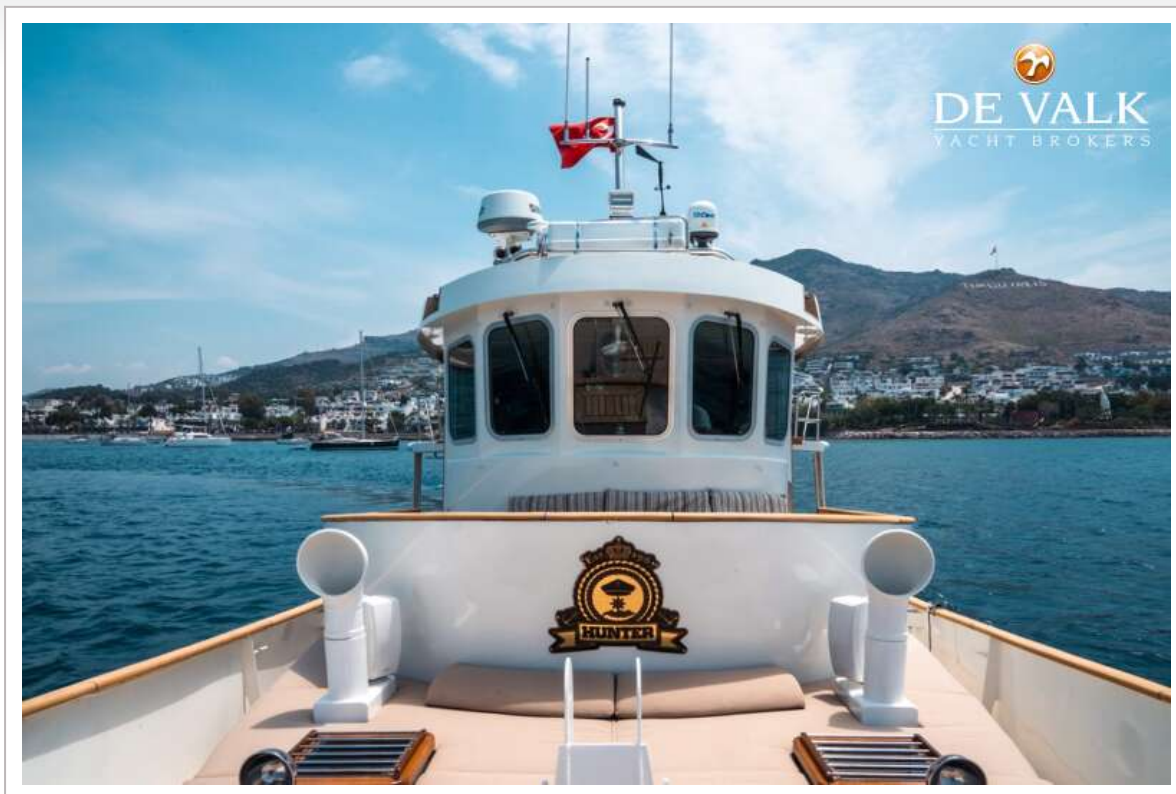


# CAMMENG 61 NORTH SEA TRAWLER





# CAMMenga 61 North Sea Trawler

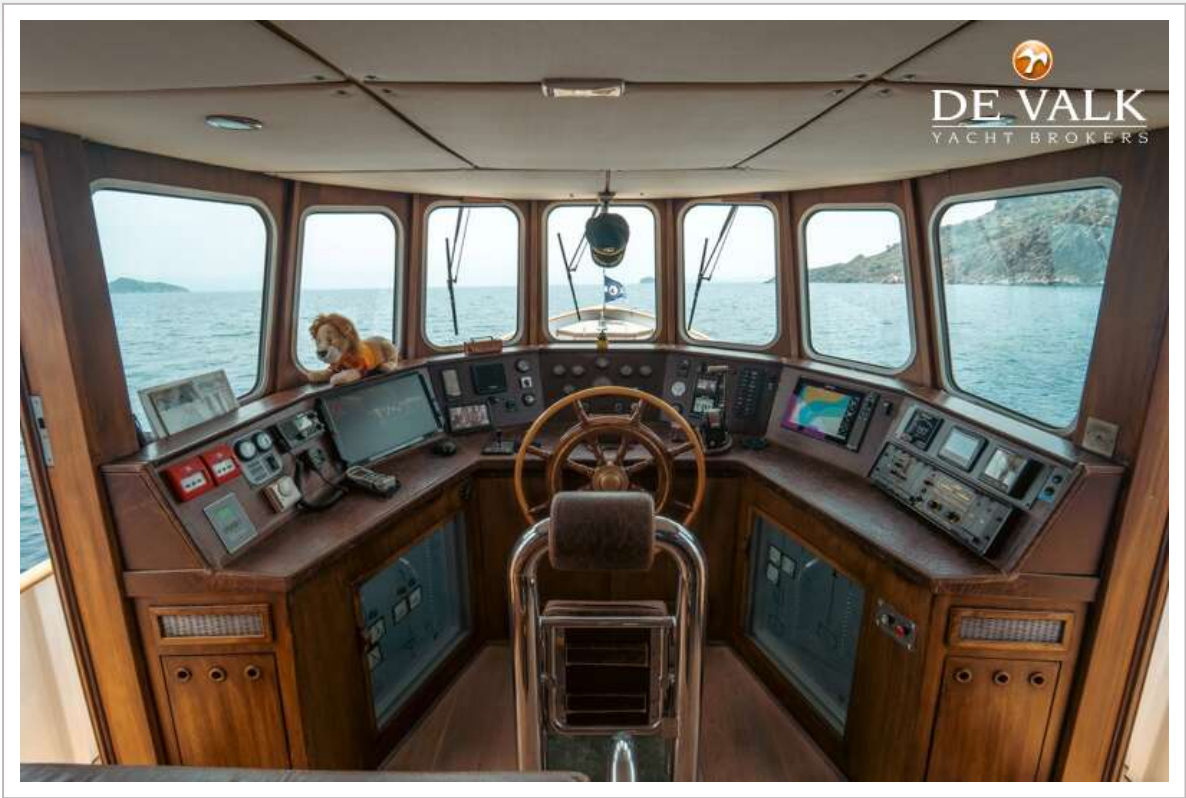


CAMMENGA 61 NORTH SEA TRAWLER

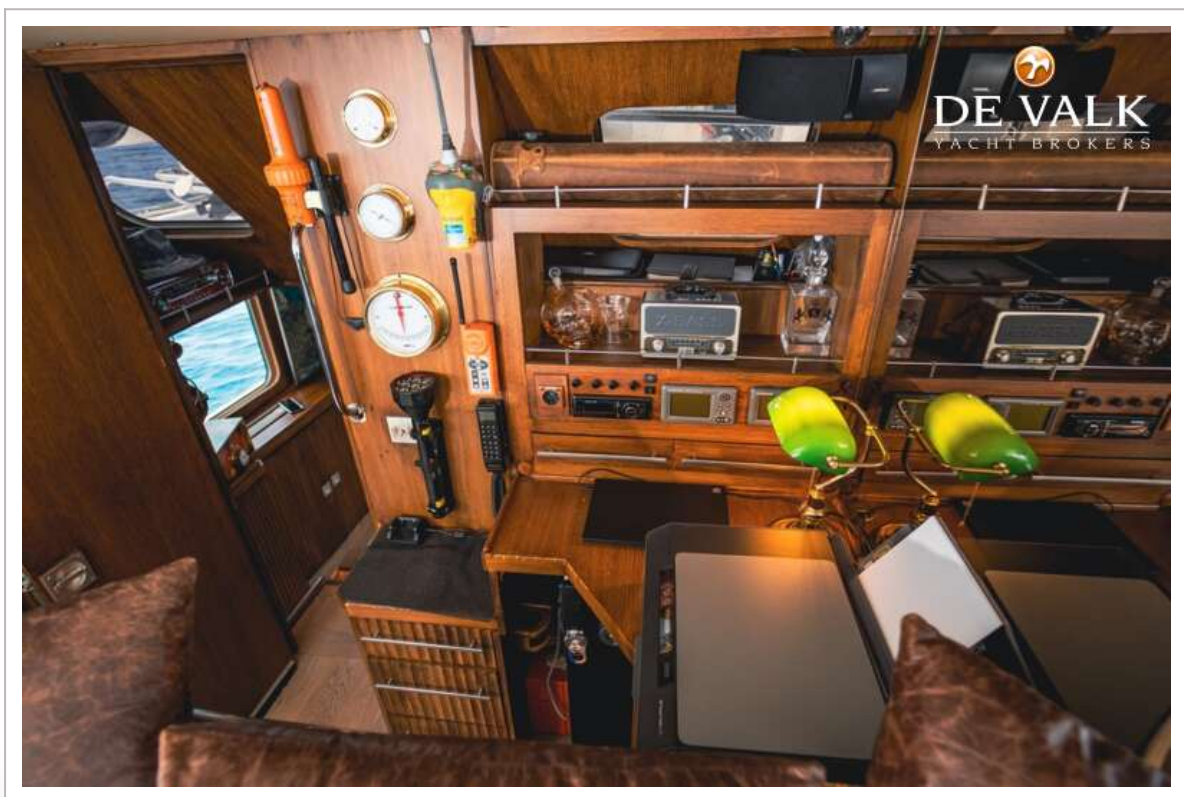
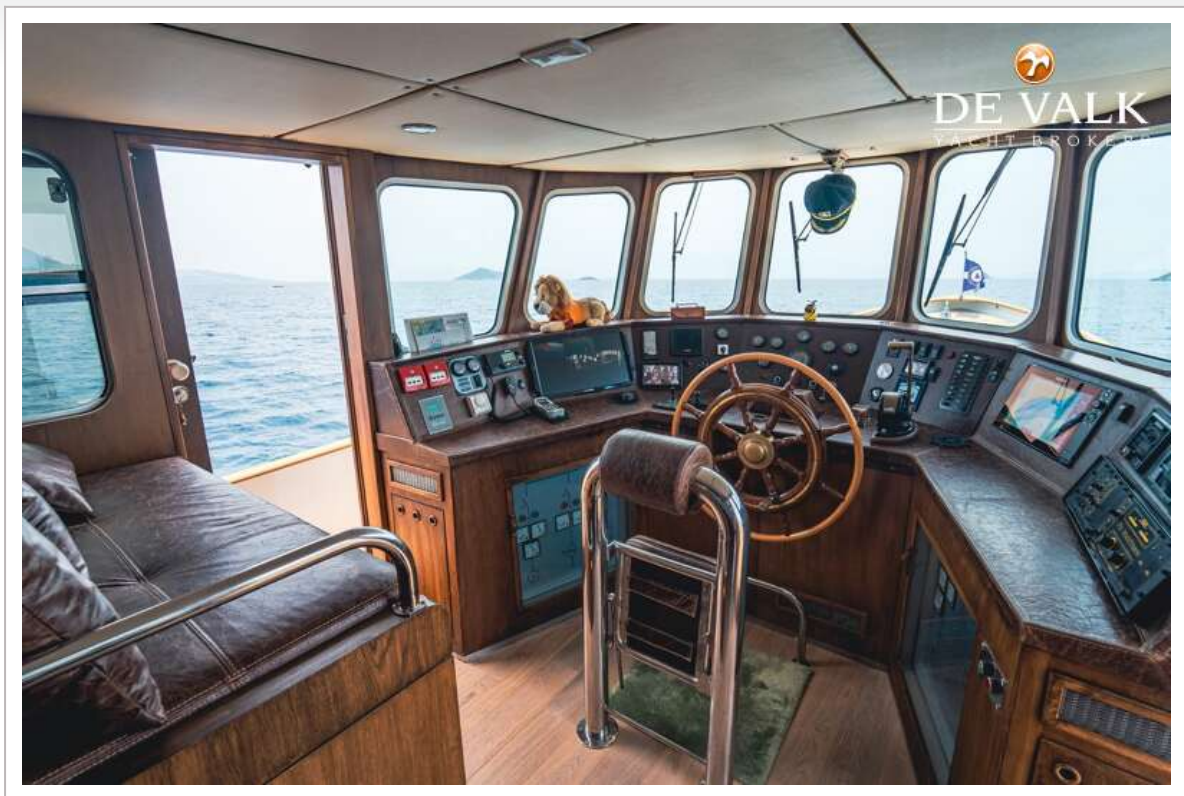




CAMMENG 61 NORTH SEA TRAWLER

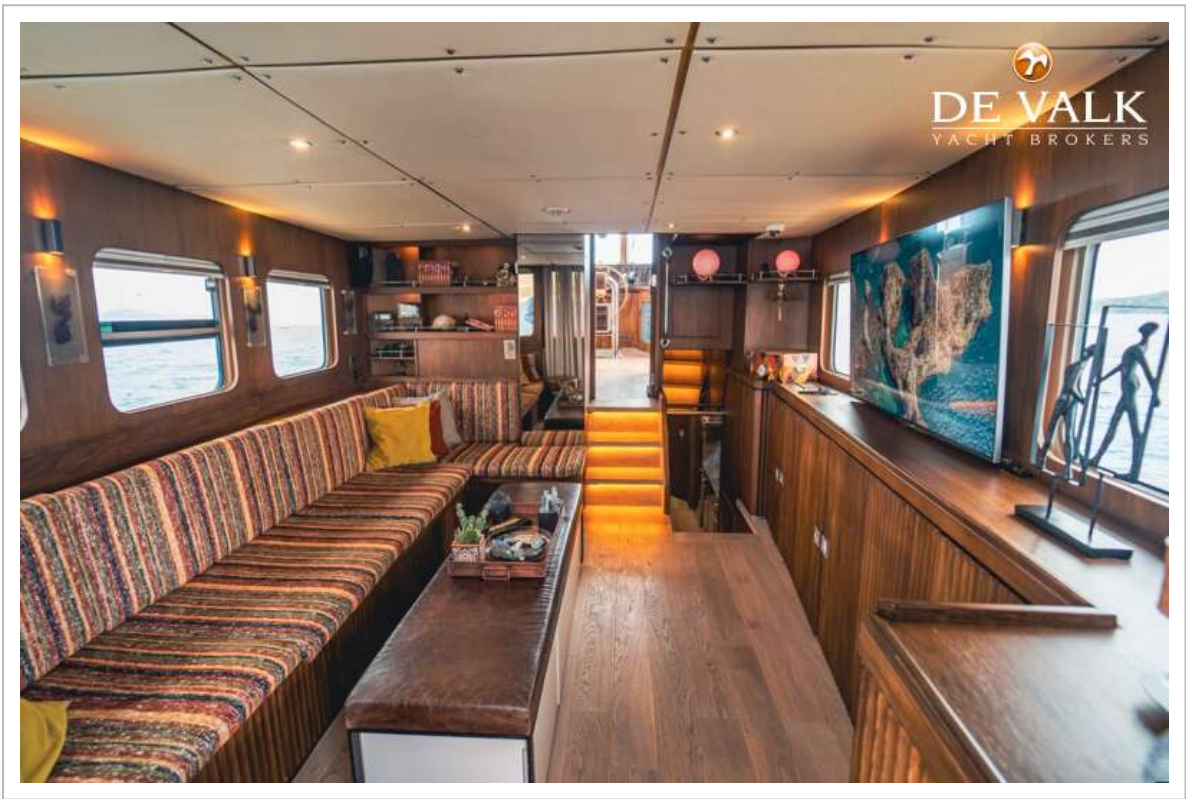


# CAMMENGA 61 NORTH SEA TRAWLER

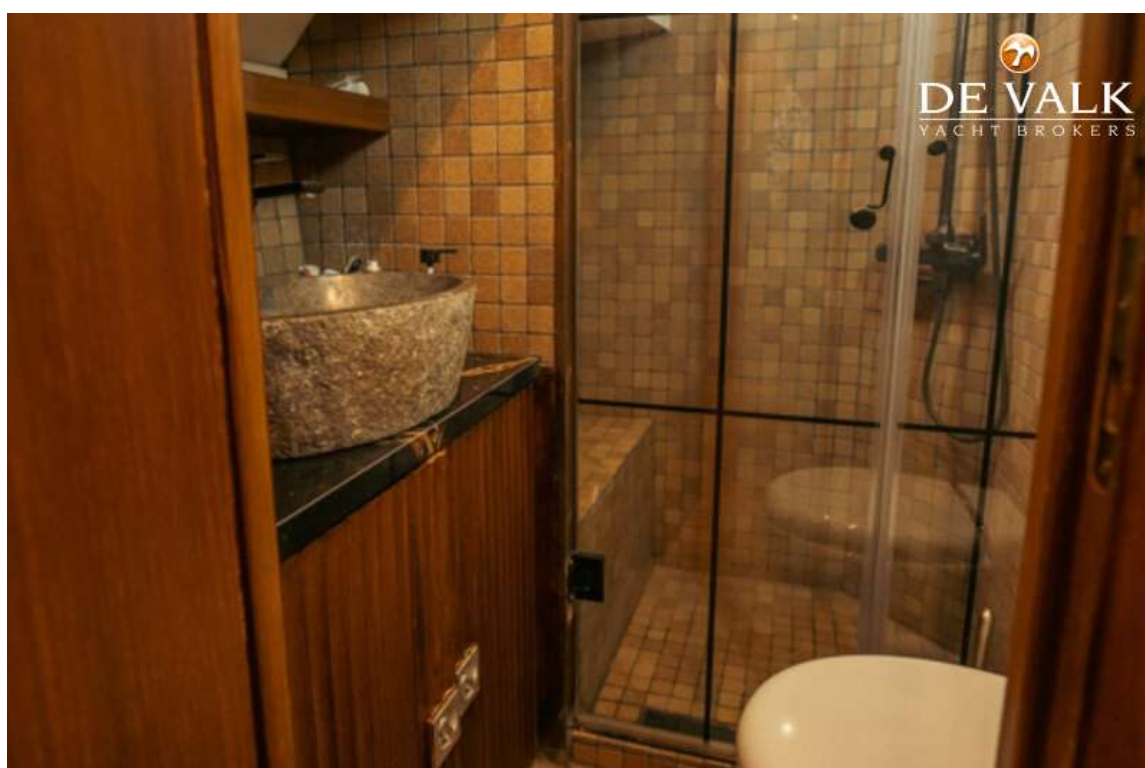




CAMMENG 61 NORTH SEA TRAWLER



# CAMMENGA 61 NORTH SEA TRAWLER



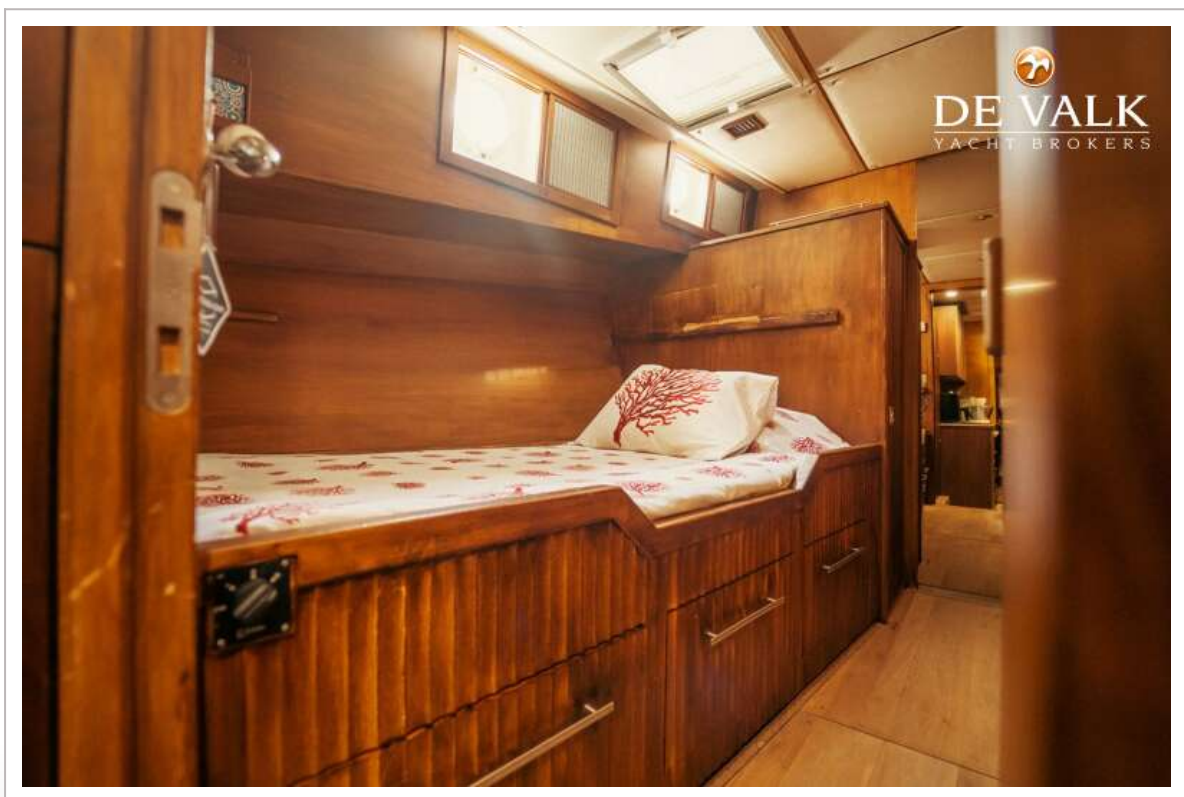


# CAMMENG 61 NORTH SEA TRAWLER

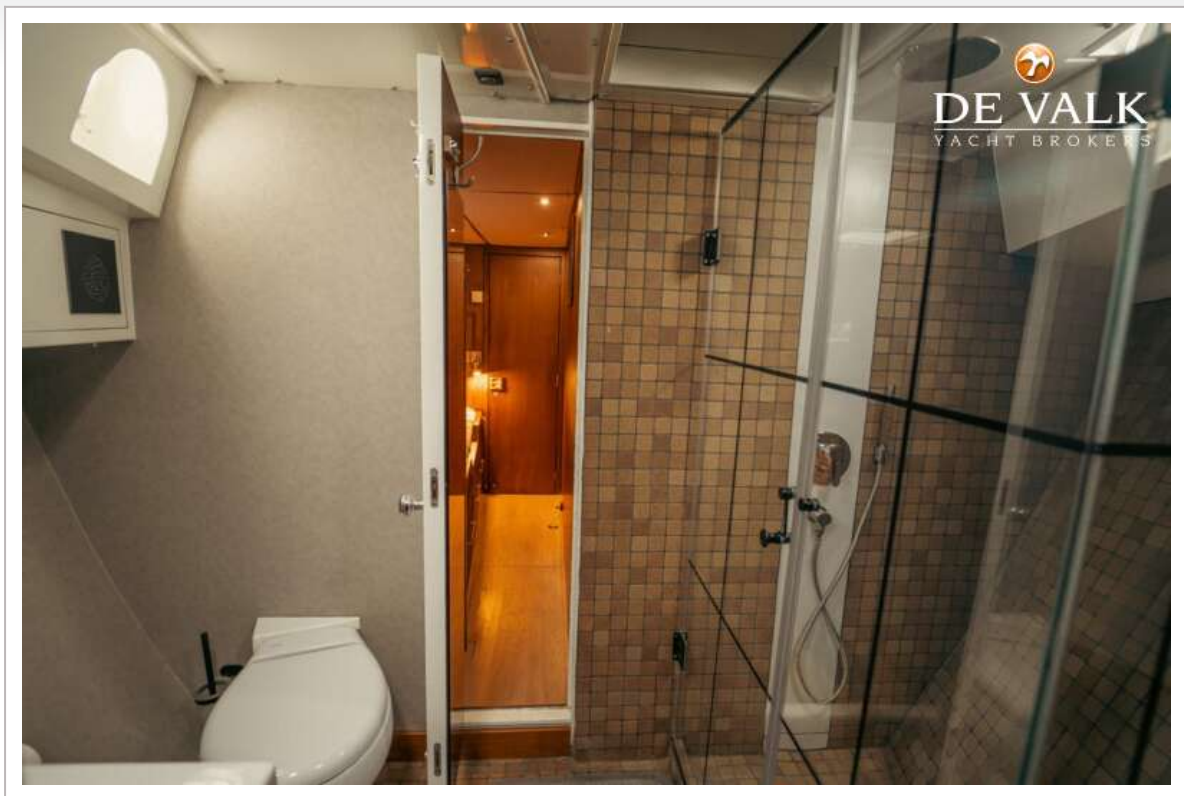




# CAMMENGA 61 NORTH SEA TRAWLER

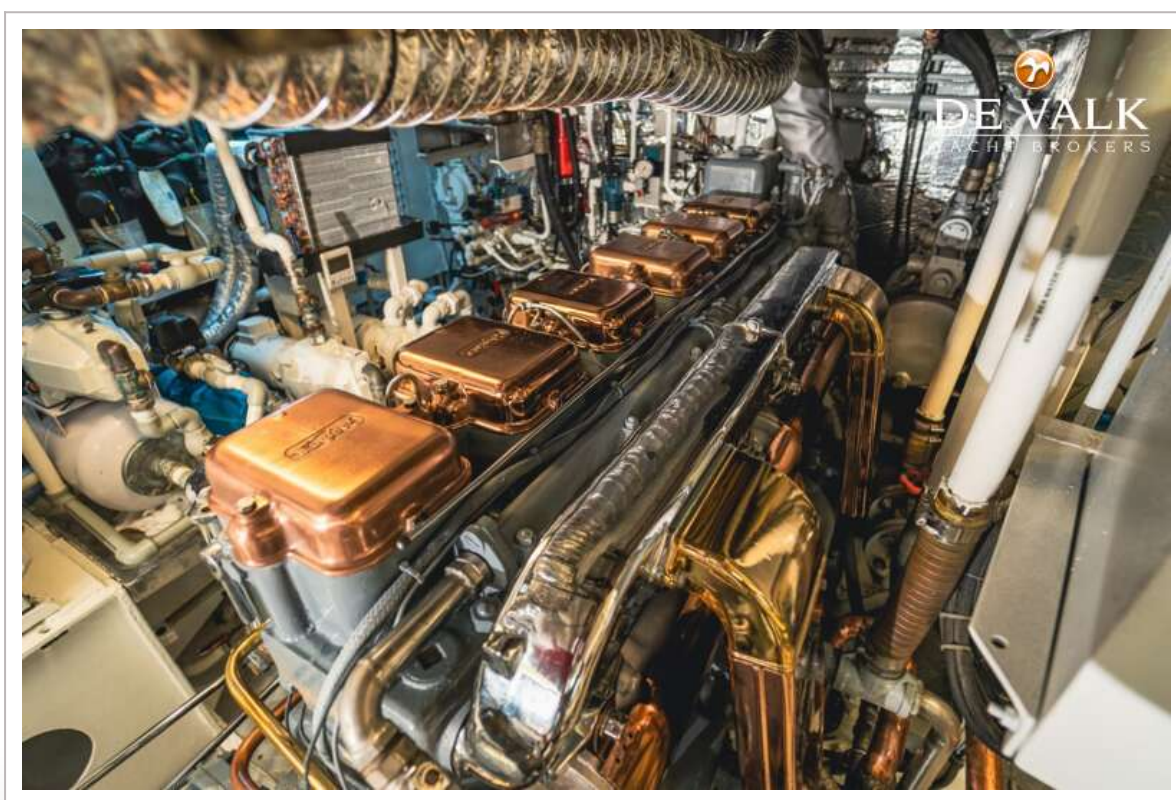


# CAMMENG 61 NORTH SEA TRAWLER





# CAMMENGA 61 NORTH SEA TRAWLER





# CAMMENGA 61 NORTH SEA TRAWLER

