



DE VALK  
YACHT BROKERS



## INTER 7700 NOR-LINE DUTCH EDITION



DE VALK  
YACHT BROKERS

# INTER 7700 NOR-LINE DUTCH EDITION

## BROKER'S COMMENTS

This very well maintained and equipped Inter 7700 Nor-Line Dutch Edition, built in Norway, is being sold by her second owner. This Inter 7700 is very comfortable, easy to handle and maneuver alone, due to the bow thruster and the heavier 75 hp engine, has a spacious and cozy interior and cockpit. Since 2019 only sailed with GTL. Because of the low air draft (1.65 m) you really can get everywhere. This unique Inter 7700 is inside a winter storage in the south of Zeeland. Please contact our office in Sint Annaland to arrange an appointment for a viewing on board.

*Jan-Ward van Dantzig*

## SPECIFICATIONS

<b>Dimensions</b>	7.70 x 2.80 x 0.75 (m)	<b>Builder</b>	Inter Trading AS
<b>Built</b>	2007	<b>Cabins</b>	1
<b>Material</b>	GRP	<b>Berths</b>	5
<b>Engine(s)</b>	1 x Yanmar 4JH4-TE diesel	<b>Hp/Kw</b>	75.00 (hp), 55.20 (kw)
<b>Asking price</b>	sold (VAT )	<b>Lying</b>	elsewhere / Not at sales office

## CONTACT

<b>Sales office</b>	De Valk Sint Annaland B.V.	<b>Telephone</b>	+31 166 601 000
<b>Address</b>	Koelhuisweg 4 4697 RM Sint Annaland NL	<b>E-mail</b>	sintannaland@devalk.nl

## DISCLAIMER

These particulars are given in good faith as supplied but cannot be guaranteed.



## GENERAL

<b>Model</b>	INTER 7700 NOR-LINE DUTCH EDITION
<b>Type</b>	motor yacht
<b>LOA (m)</b>	7,70
<b>Beam (m)</b>	2,80
<b>Draft (m)</b>	0,75
<b>Air draft (m)</b>	2,50
<b>Air draft min (m)</b>	1,65
<b>Headroom (m)</b>	1,85
<b>Year built</b>	2007
<b>Launched</b>	2008
<b>Builder</b>	Inter Trading AS
<b>Country</b>	Norway
<b>Displacement (t)</b>	1,8
<b>CE norm</b>	C
<b>Hull material</b>	GRP
<b>Hull colour</b>	blue
<b>Hull shape</b>	deep-V
<b>Superstructure material</b>	GRP
<b>Rubbing strake</b>	fender rope With a Leeuwerik on the bow
<b>Deck material</b>	GRP
<b>Deck finish</b>	non-skid moulded in
<b>Superstructure deck finish</b>	non-skid moulded in
<b>Cockpit deck finish</b>	synthetic teak
<b>Antifouling (year)</b>	2023 - Epifanes Copper Cruiser
<b>Window frame</b>	aluminium
<b>Window material</b>	tempered glass
<b>Deckhatch</b>	1 x Gebo with Ocean Air rollo and musquito net
<b>Fuel tank (litre)</b>	polyethylene 110 - Tank cleaned in 2019 and only used with GTL Fuel eversince
<b>Level indicator (fuel tank)</b>	(New in 2021)
<b>Freshwater tank (litre)</b>	polyethylene 110



<b>Level indicator (freshwater)</b>	yes
<b>Blackwater tank (litre)</b>	polyethylene 110
<b>Blackwater tank extraction</b>	deck extraction + pump (manual pump - tank has never been used)
<b>Wheel steering</b>	hydraulic (teak wheel)
<b>Emergency tiller</b>	yes
<b>Extra info</b>	Old antifouling layers removed from the under water hull (2022)
<b>Extra info</b>	Treaded with 2x Primocon & 2x Epifanes antifouling (spring 2023)
<b>Extra info</b>	Headroom in cockpit (under sprayhood and cockpit cover) : 1,95 m

## ACCOMMODATION

<b>Cabins</b>	1
<b>Berths</b>	5
<b>Interior</b>	teak
<b>Floor</b>	woodprint (teak look-a-like)
<b>Open cockpit</b>	yes
<b>Saloon</b>	yes
<b>Headroom saloon (m)</b>	1,80
<b>Heating</b>	diesel ducted hot air Eberspacher (2008)
<b>Dinette to convert into berth</b>	yes
<b>Opening door to cockpit</b>	yes
<b>Galley</b>	In the cockpit
<b>Countertop</b>	Duropal White
<b>Sink</b>	stainless steel In the cockpit
<b>Cooker</b>	diesel Wallas - 2 burners
<b>Fridge</b>	Domestic front loader fridge (new in 2019)
<b>Freezer</b>	Small freezing compartment in the fridge
<b>Hot water system</b>	220V + engine Approx. 20 liter
<b>Water pressure system</b>	electrical Waterpump (new in 2019)
<b>Owners cabin</b>	double bed In front of salon (with table down)



<b>Bed length (m)</b>	2,00 x 1,80
<b>Wardrobe</b>	shelves
<b>Bathroom</b>	separate Headroom : 1,65 m
<b>Toilet</b>	separate
<b>Toilet system</b>	electric
<b>Wash basin</b>	in the bathroom
<b>Guest cabin 1</b>	single bed On port side - next to the entrance
<b>Bed length (m)</b>	1,95 x 0,60
<b>Extra info</b>	Grey Curtains (new in 2022) inside
<b>Extra info</b>	White curtains to mount on the windows of the cockpit cover.

## MACHINERY

<b>No of engines</b>	1
<b>Make</b>	Yanmar
<b>Type</b>	4JH4-TE
<b>HP</b>	75
<b>kW</b>	55.20
<b>Fuel</b>	diesel
<b>Year installed</b>	2011
<b>Maximum speed (kn)</b>	9
<b>Cruising speed (kn)</b>	5,5
<b>Consumption (l/hr)</b>	2,5
<b>Engine hours</b>	1700
<b>Engine cooling system</b>	freshwater heat exchanger
<b>Drive</b>	shaft
<b>Engine controls</b>	bowden cable
<b>Gearbox</b>	mechanical
<b>Bowthruster</b>	electric Sleiþner Side-Power
<b>Exhaust</b>	watercooled
<b>Propeller type</b>	fixed
<b>Propeller blades</b>	3



<b>Propeller shaft material</b>	stainless steel
<b>Shaft lubrication</b>	grease
<b>Manual bilge pump</b>	1 x
<b>Electrical installation</b>	12 & 220 Volt
<b>Start battery</b>	1 x Victron AGM 105 Ah (new in 2021)
<b>Service battery</b>	2 x VMF 125 Ah
<b>Bowthruster battery</b>	1x Optima Red Top 50 Ah (new in 2023)
<b>Battery monitor</b>	Victron BMV-600S
<b>Battery charger/inverter</b>	Victron Phoenix Multiplus 12V/1600W/70A
<b>Diode battery combiners</b>	yes
<b>Shorepower</b>	with cable
<b>Extra info</b>	Fuel filter with a water separator (with glass)
<b>Extra info</b>	Everywhere in the cockpit and inside are 220 V sockets
<b>Extra info</b>	The engine hour counter isn't always readable

## NAVIGATION

<b>Electric compass</b>	In the Navman HDS7 chart plotter
<b>Depth sounder</b>	In the Navman HDS7 chart plotter
<b>Log</b>	In the Navman HDS7 chart plotter
<b>VHF</b>	ICOM IC-M330 (new in 2019)
<b>Autopilot</b>	Garmin GHC10 with a wire less remote control
<b>Rudder angle indicator</b>	In the Navman HDS7 chart plotter
<b>Plotter/GPS</b>	Navman HDS7 chart plotter
<b>Electronic chart(s)</b>	1 x Navionics
<b>AIS transceiver</b>	yes
<b>Navigation lights</b>	With LED anchor light
<b>Extra info</b>	Antenna on coachroof is removable

## EQUIPMENT

<b>Fixed windscreen</b>	Can be folded down
<b>Sprayhood</b>	Blue (re-stitched in 2023) & same one (as new) as spare



<b>Cockpit cover</b>	Blue (re-stitched in 2023) & same one (as new) as spare
<b>Bimini</b>	(when all site panels from cockpit cover are open)
<b>Winter cover</b>	(only used once)
<b>Window cover</b>	Over the windows of the sprayhood
<b>Cockpit cushions</b>	Dark blue
<b>Cockpit table</b>	Varnished teak with folding table blades (removable)
<b>Cockpit chairs</b>	2 x blue (on a rails)
<b>Bathing platform</b>	Non-skid moulded in
<b>Boarding ladder</b>	stainless steel
<b>Deck shower</b>	(hot and cold)
<b>Anchor</b>	Bruce Stainless steel - 7,5 KG
<b>Anchor chain</b>	10 m stainless steel chain & 25 m rope
<b>Windlass</b>	electrical Lewmar with a wire less remote control
<b>Sea railing</b>	stainless steel
<b>Grab rail (superstructure)</b>	stainless steel
<b>Pushpit</b>	Stainless steel
<b>Lifejackets</b>	2 x automatic
<b>Lifebuoy</b>	Life-Sling
<b>Wiper</b>	3 x
<b>Horn</b>	electric
<b>Radar reflector</b>	(loose - not mounted)
<b>Fenders</b>	yes
<b>Mooring lines</b>	yes
<b>Spare parts</b>	yes
<b>TV</b>	Samsung
<b>Radio-cd player</b>	With a remote control
<b>Cockpit speakers</b>	2 x
<b>Fire extinguisher</b>	1 x
<b>Latest extinguisher survey</b>	Must be checked / renewed
<b>Extra info</b>	A double bed (2,00 x 1,60m) can be created in the cockpit
<b>Extra info</b>	LED Lights in the cockpit
<b>Extra info</b>	New handgrips and windows in cockpit cover (done in 2023)







# INTER 7700 NOR-LINE DUTCH EDITION



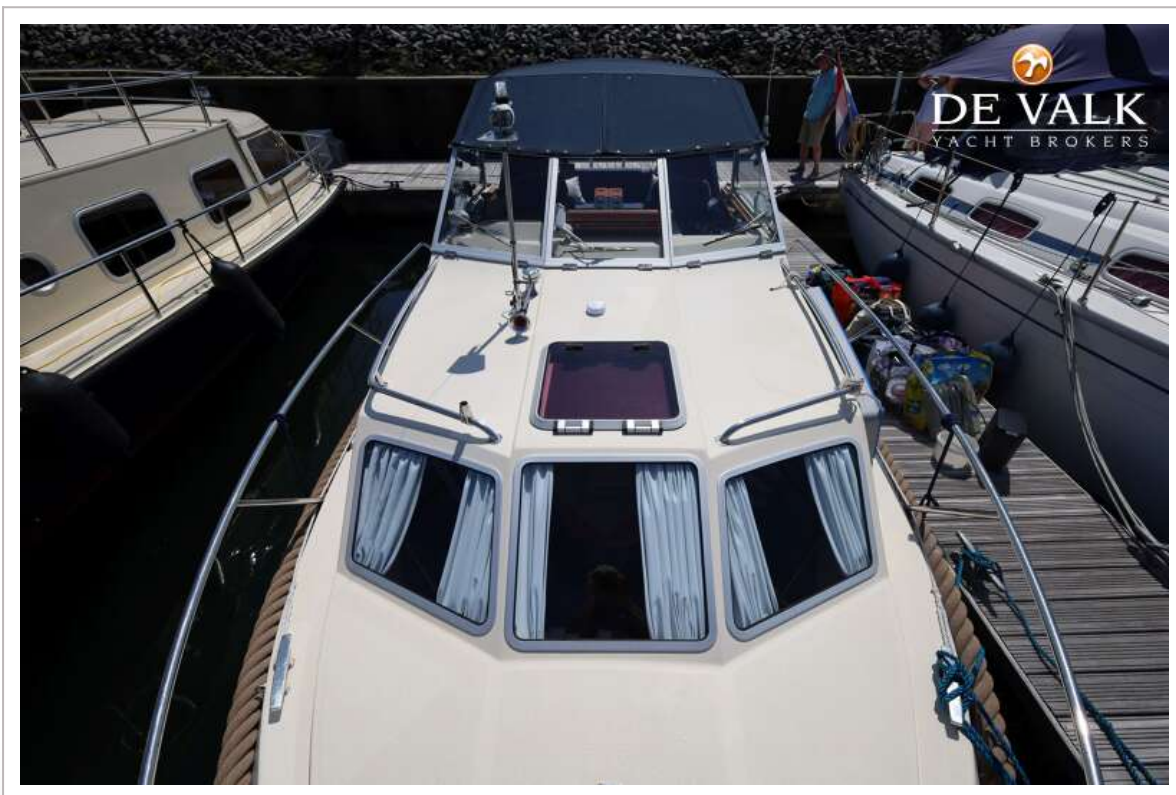
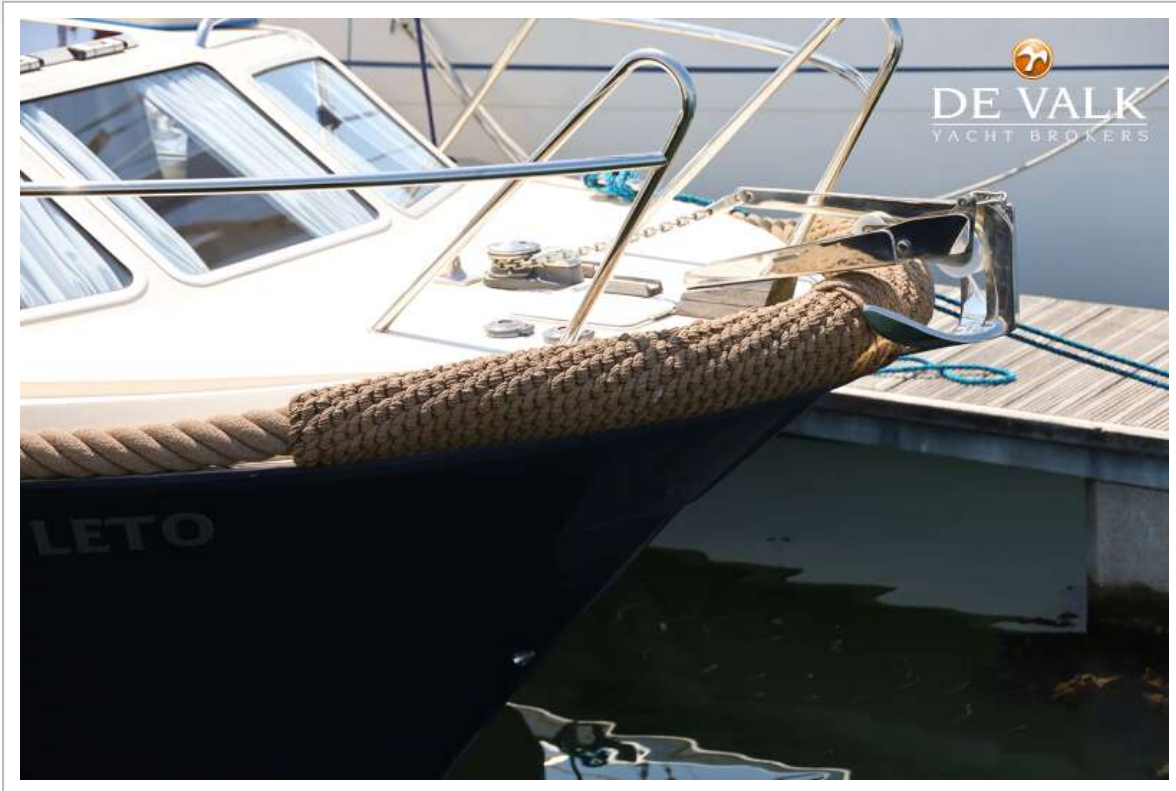
# INTER 7700 NOR-LINE DUTCH EDITION



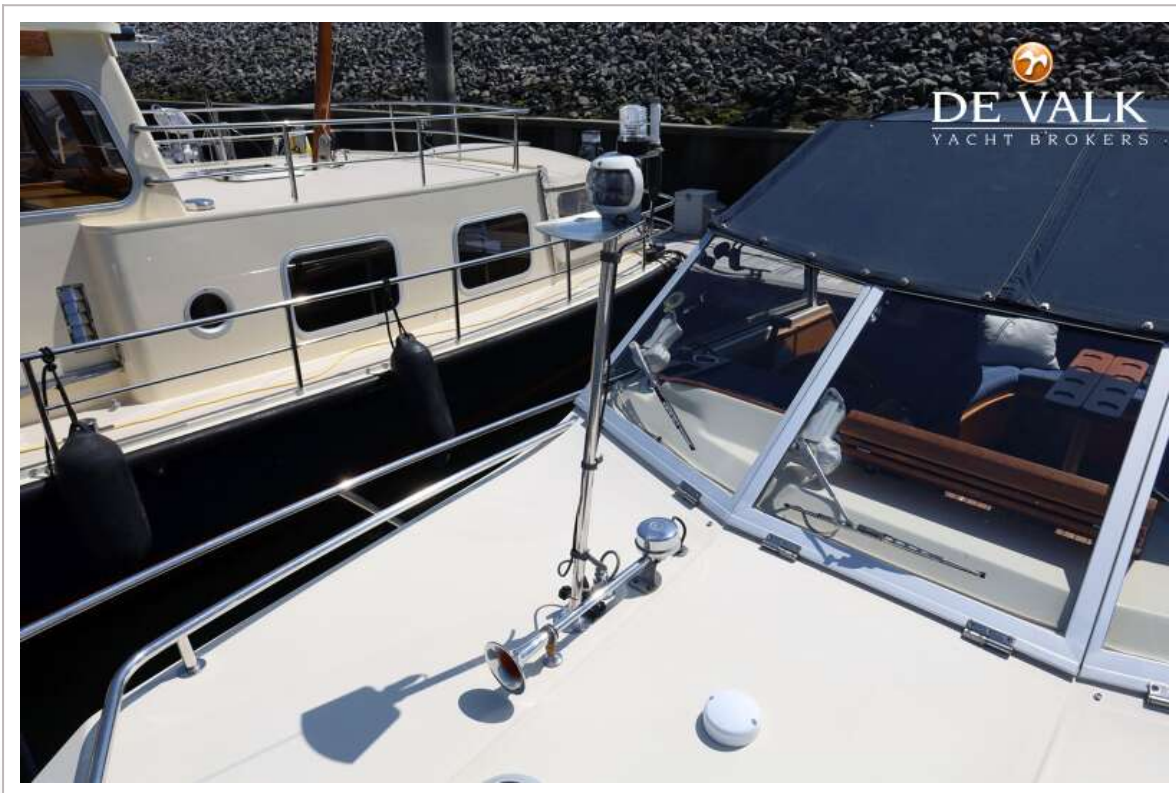
# INTER 7700 NOR-LINE DUTCH EDITION



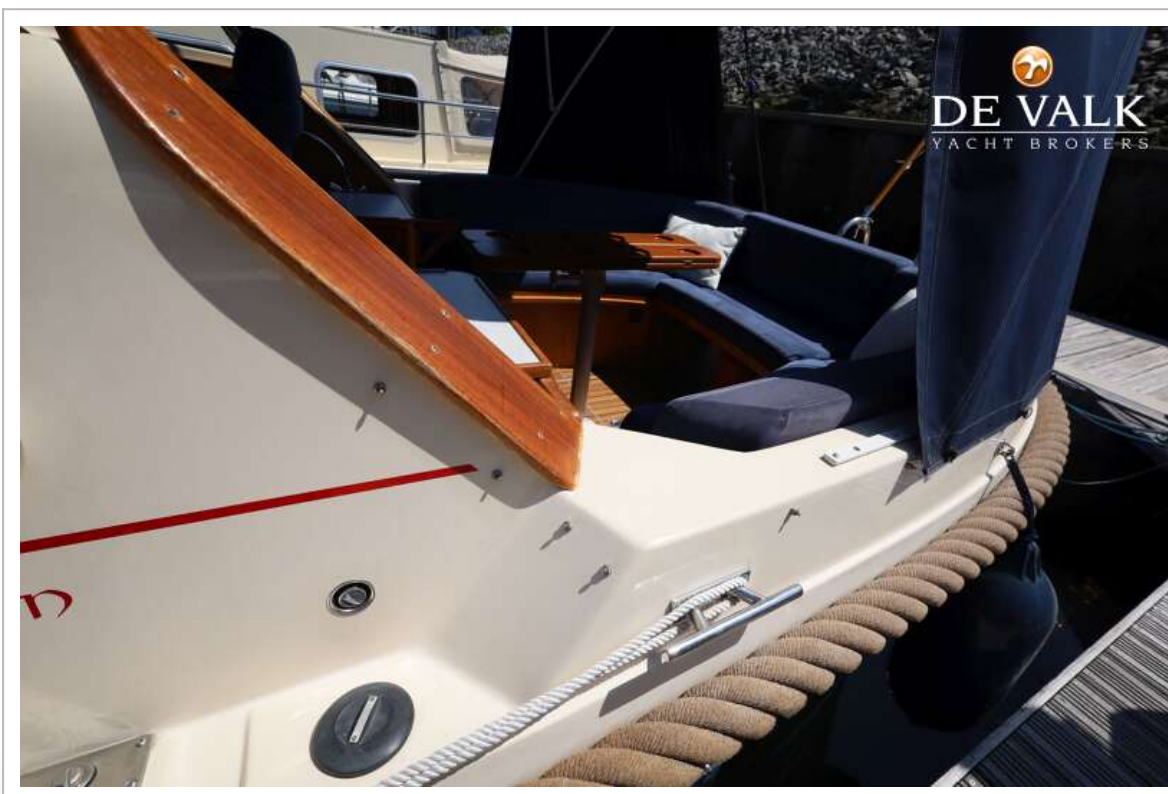
# INTER 7700 NOR-LINE DUTCH EDITION



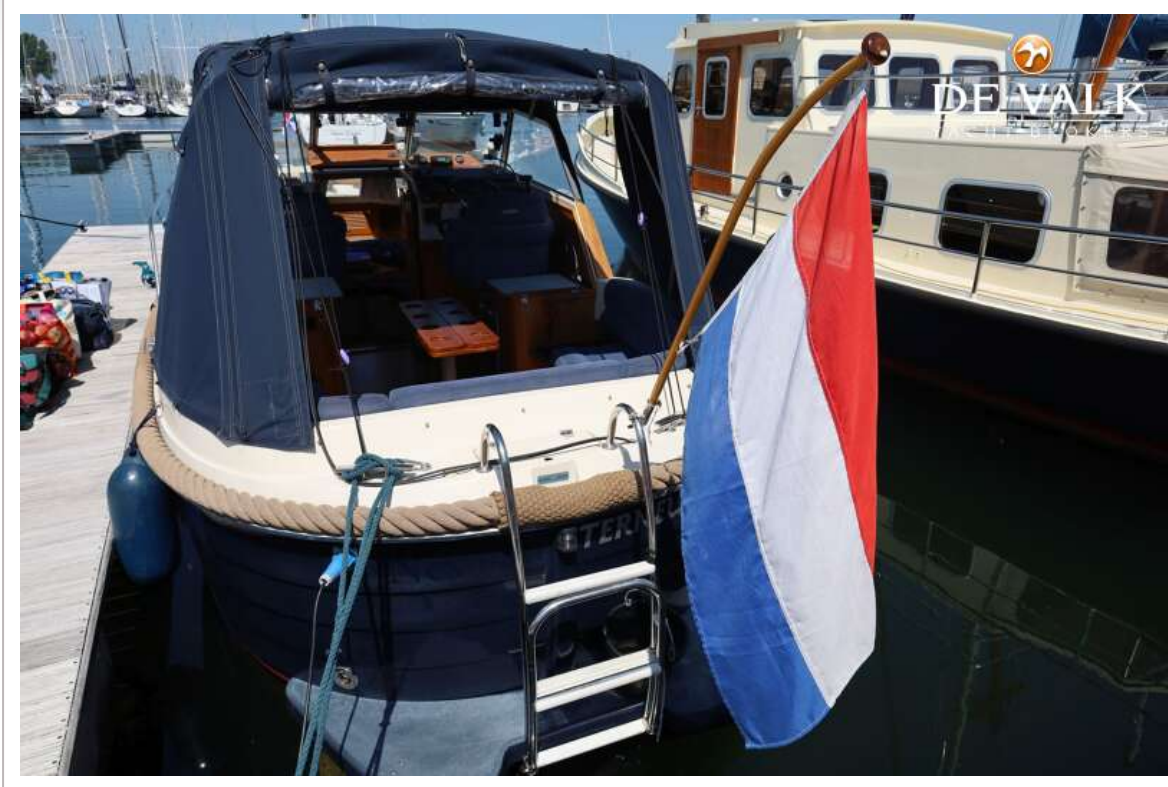
# INTER 7700 NOR-LINE DUTCH EDITION



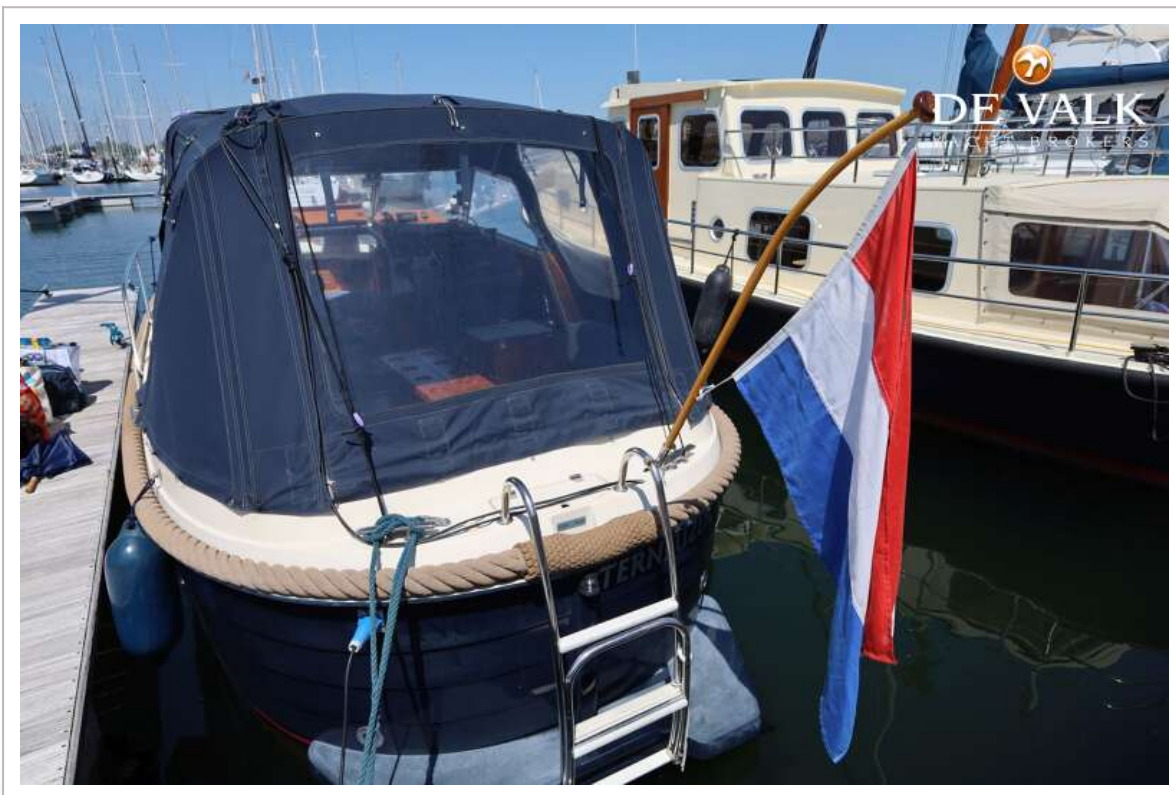
# INTER 7700 NOR-LINE DUTCH EDITION



# INTER 7700 NOR-LINE DUTCH EDITION



# INTER 7700 NOR-LINE DUTCH EDITION





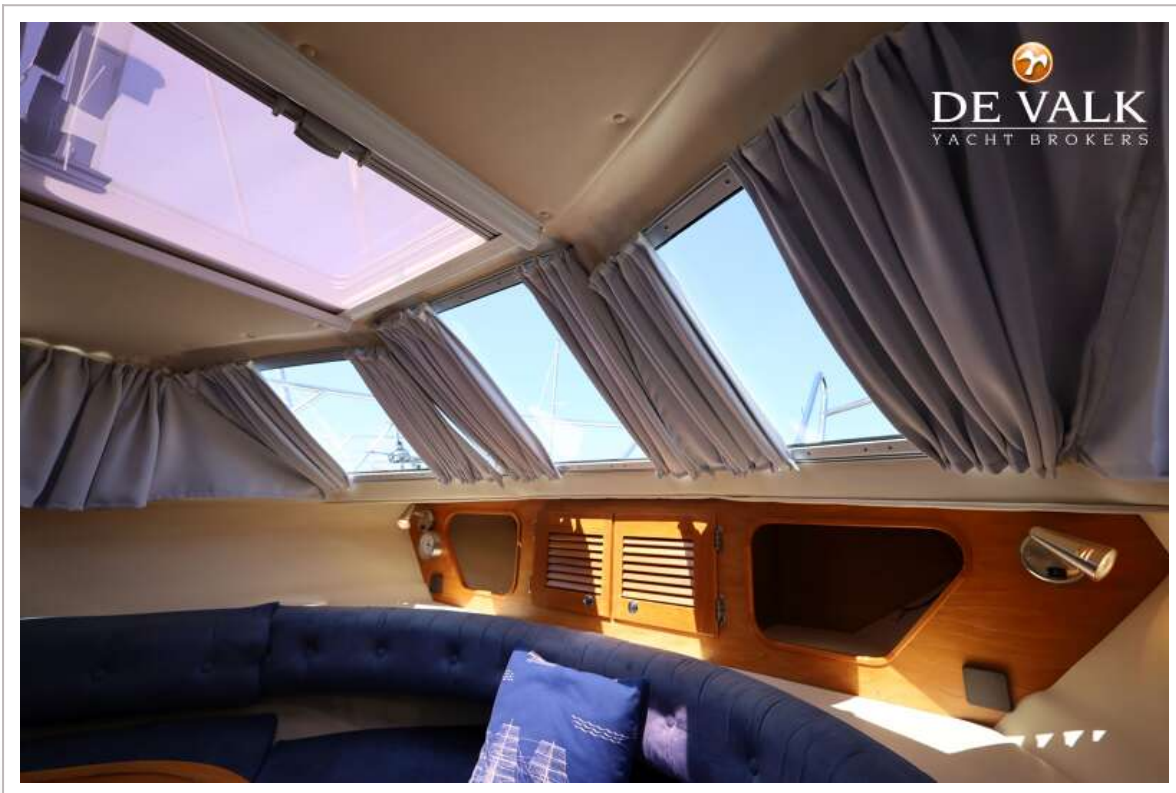
# INTER 7700 NOR-LINE DUTCH EDITION



# INTER 7700 NOR-LINE DUTCH EDITION



# INTER 7700 NOR-LINE DUTCH EDITION



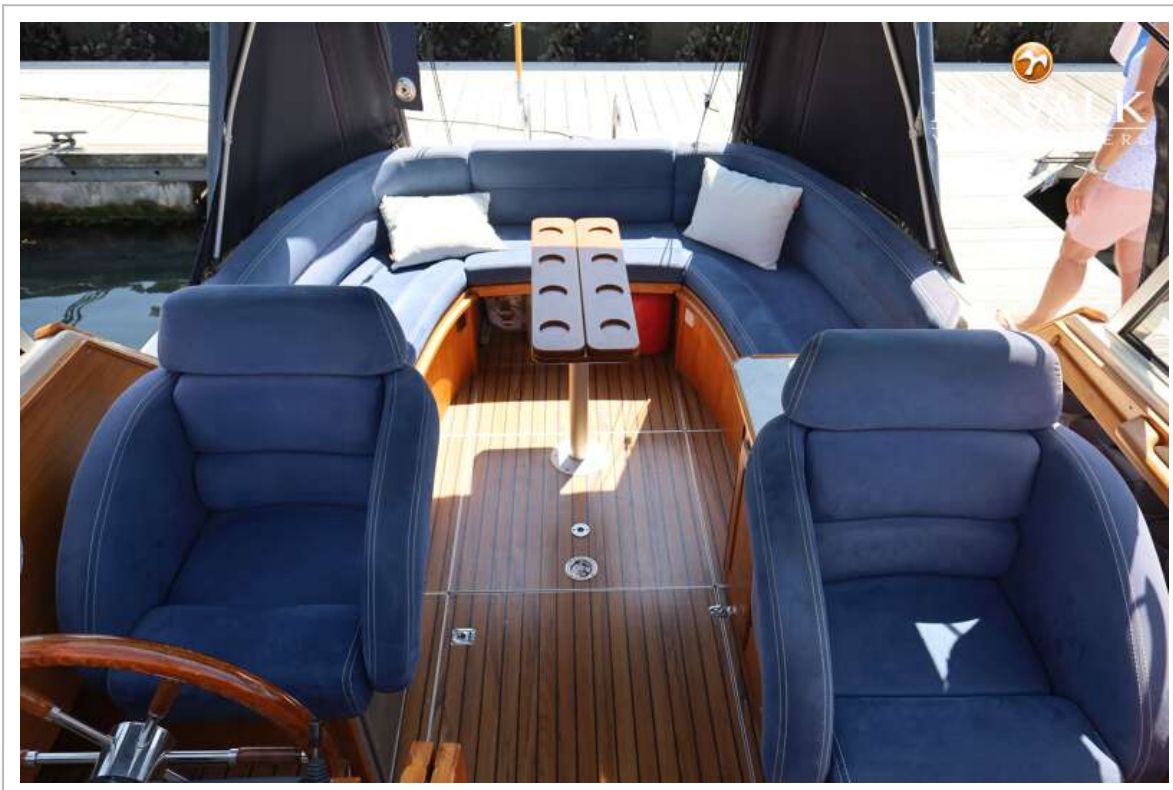
# INTER 7700 NOR-LINE DUTCH EDITION



# INTER 7700 NOR-LINE DUTCH EDITION



# INTER 7700 NOR-LINE DUTCH EDITION



# INTER 7700 NOR-LINE DUTCH EDITION

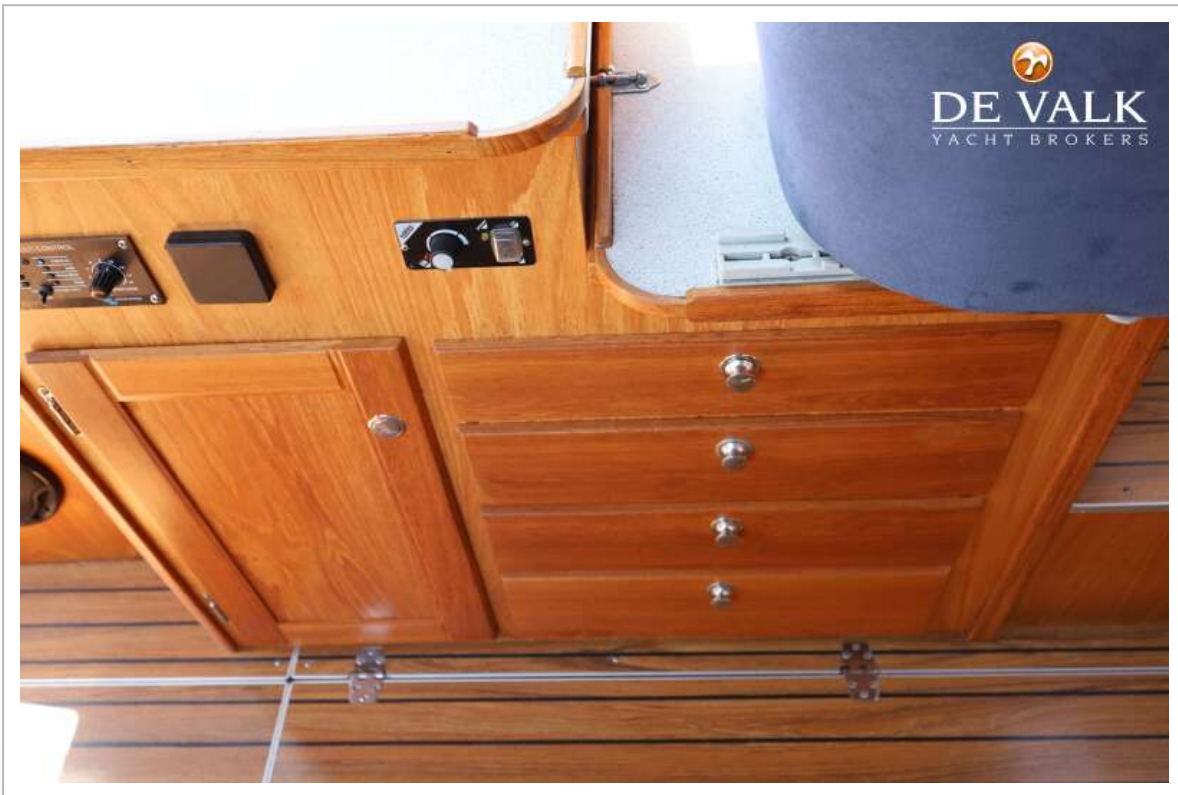


# INTER 7700 NOR-LINE DUTCH EDITION

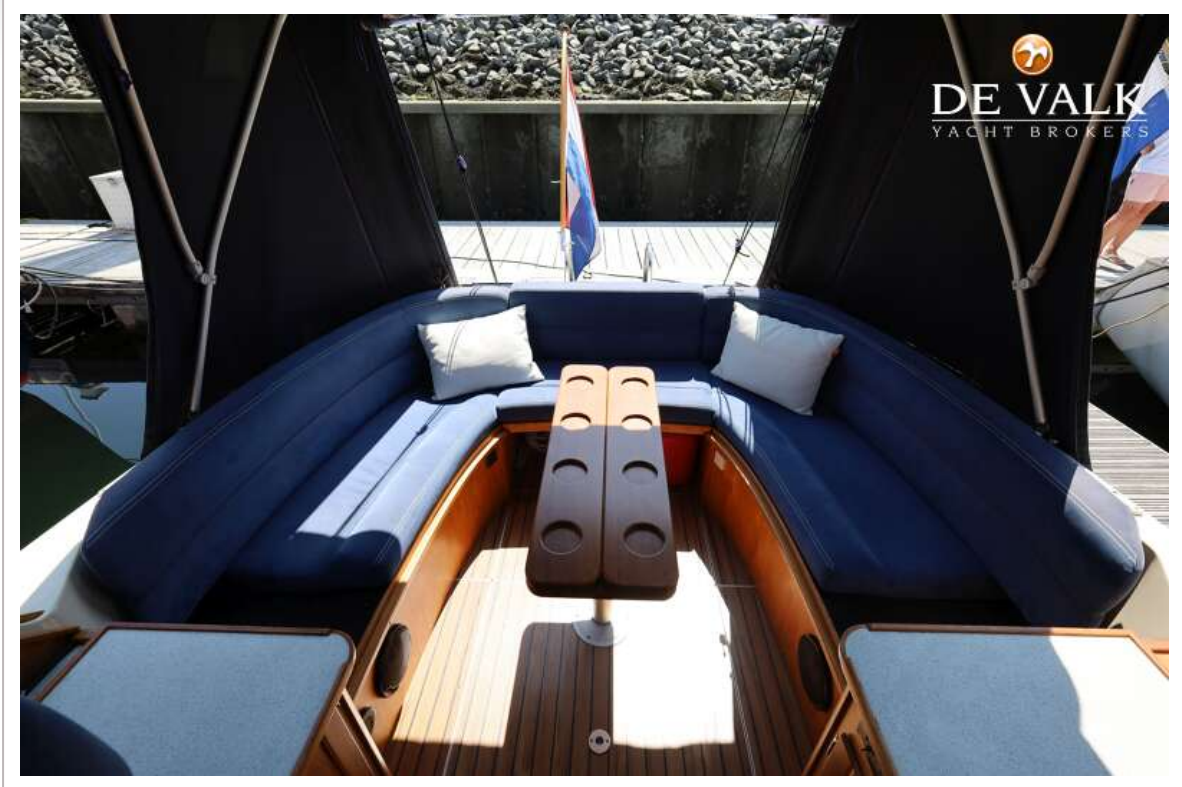




# INTER 7700 NOR-LINE DUTCH EDITION



# INTER 7700 NOR-LINE DUTCH EDITION



# INTER 7700 NOR-LINE DUTCH EDITION



# INTER 7700 NOR-LINE DUTCH EDITION



# INTER 7700 NOR-LINE DUTCH EDITION

