



DE VALK
YACHT BROKERS



SPENCER 53 SLOOP



DE VALK
YACHT BROKERS

SPENCER 53 SLOOP

BROKER'S COMMENTS

This Spencer 53 is a heavy weather cruising motor sailer yacht, ready to go anywhere. The rigging equipment is very reliable and is designed to perform all maneuvers from the cockpit. The engine has been replaced in 2012. The interior is very comfortable and everything is well-maintained. Currently laying on dry in A Coruña, Spain. This yacht will be auctioned. For more information see: bit.ly/Auction_Spencer53

Chuny Bermúdez de Castro

SPECIFICATIONS

Dimensions	16.17 x 4.01 x 2.26 (m)	Builder	Spencer boats Vancouver
Built	1972	Cabins	4
Material	GRP	Berths	8
Engine(s)	1 x Lombardi Marine LD 2400 MT diesel	Hp/Kw	87.00 (hp), 64.03 (kw)
Asking price	sold (VAT)	Lying	at sales office

CONTACT

Sales office	De Valk A Coruña	Telephone	+34 881 800 469
Address	MARINA CORUÑA VARADERO - Dársena Deportiva Faro de Oza s/n 15006 A Coruña ES	E-mail	acoruna@devalk.nl

DISCLAIMER

These particulars are given in good faith as supplied but cannot be guaranteed.



SPENCER 53 SLOOP

GENERAL

Model	SPENCER 53 SLOOP
Type	sailing yacht
LOA (m)	16,17
LWL (m)	12,00
Beam (m)	4,01
Draft (m)	2,26
Air draft (m)	2,20
Headroom (m)	1,97
Year built	1972
Builder	Spencer boats Vancouver
Country	Canada
Designer	John Brandlmayr
Displacement (t)	21
Gross tonnage	26
Net tonnage	5
CE norm	NA
Hull material	GRP
Hull colour	white The hull got new gel coat, copper coat and was upgraded in 2017
Hull shape	V-shaped hull
Superstructure material	GRP
Rubbing strake	yes
Deck material	GRP
Deck finish	non-skid paint
Antifouling (year)	Cooper Coat
Window frame	aluminium Lewmar
Window material	perspex
Portholes	aluminium 16
Flybridge cockpit cover	Full cover
Radar arch	yes
Fuel tank (litre)	GRP



SPENCER 53 SLOOP

Level indicator (fuel tank)	yes
Fuel daytank (litre)	GRP
Freshwater tank (litre)	500
Level indicator (freshwater)	yes
Blackwater tank (litre)	250
Level indicator (blackwater)	yes
Greywater tank (litre)	yes
Level indicator (greywater)	yes
Wheel steering	hydraulic Stainless wheel 57mm diameter

ACCOMMODATION

Cabins	4
Berths	8
Crew cabin	yes
Crew berths	Max 12
Layout	Two bert, main saloon, aft saloon, aft port cabin, aft stb cabin, pilot bert.
Floor	teak
Open cockpit	Yes with the cover
Aft deck	GRP now skid
Deck saloon	Teak
Pilot house/deck saloon	yes
Saloon	yes
Headroom saloon (m)	1,95
Heating	central heating
Air-conditioning	yes
Chart table	yes
Aft Cabin	3
Dinette	yes
Convertible berth	yes
Opening door to cockpit	yes



SPENCER 53 SLOOP

Galley	Galley and saloon
Countertop	Marble substitute
Sink	stainless steel
Cooker	Camping gas
Oven	Plus grill, new 2015
Gas alarm	yes
Microwave	Bluesky
Fridge	yes
Freezer	yes
Hot water system	on central heating Diesel fired 10kw (2022)
Hot water tap	50lt. water storage tank 2017
Coffee maker	yes
Owners cabin	King size bed
Bed length (m)	2,00
Wardrobe	shelves Large double wardrobe
Bathroom	en suite
Toilet system	manual
Shower	en suite
Guest cabin 1	v-bed
Bed length (m)	1,95
Wardrobe	2 double door wardrobe
Bathroom	shared
Toilet	shared
Shower	shared
Guest cabin 2	bunk bed
Bed length (m)	1,96
Wardrobe	yes
Bathroom	shared
Toilet	shared
Shower	shared
Guest cabin 3	double bed
Bed length (m)	2,00



SPENCER 53 SLOOP

Wardrobe	yes
Bathroom	yes
Toilet	shared
Shower	shared
Extra info	the only access to the engine room and to the aft saloon is from this hallway. (the aft saloon can also be accessed through the centre cockpit) The through way has a height restriction 150x55cmx200 long with standing room at counter top.

MACHINERY

No of engines	1
Make	Lombardi Marine
Type	LD 2400 MT
HP	87
kW	64.03
Fuel	diesel
Year installed	2012
Cruising speed (kn)	8
Engine hours	608
Engine cooling system	seawater
Drive	shaft
Bowthruster	electric Lewmar 185TT
Propeller type	feathering Max Prop
Propeller blades	3
Propeller shaft material	stainless steel
Electric bilge pump	yes
Generator	wet exhaust Lombardi Marine 6 kW, model LGM6000
Batteries	5
Generator battery	yes
Battery charger/inverter	yes

NAVIGATION



SPENCER 53 SLOOP

Compass	yes
Depth sounder/log	Raymarine
Log	Raymarine
Windset	Raymarine
VHF	Standard Horizon Matrix GX3000E
Autopilot	Raytheon connect to a heavy electric ram
GPS	Raymarine C95
Radar/GPS	yes

EQUIPMENT

Sprayhood	yes
Sprayhood with grab rail	Year 2017 construction 25mm stainless tube
Cockpit cover	yes
Cockpit table	yes
Cockpit chairs	yes
Boarding ladder	yes
Anchor	Delta Stainless steal 20kg
Anchor chain	30m stainless steal 10mm
Anchor 2	CQR Plough Stainless steal 20kg
Anchor chain	30m stainless steal 10mm
Windlass	electrical Lewmar
Dinghy	inflatable Excel voyager SR 360 with Tohatsu 4 stroke 9.8 Hp.
Outboard	yes
Davits	yes
Grab rail (superstructure)	yes
Life raft	yes
Life raft (pers)	8
Last life raft survey	2022
Lifejackets	yes
Safety harness	yes
Lifebuoy	yes



SPENCER 53 SLOOP

Danbuoy	yes
Safety lines on deck	yes
Horn	yes
Binocular	yes
Fenders	10
Mooring lines	yes
Spare parts	yes
Tools	yes
Alarm system	yes
TV	yes
TV receiver	yes
Surround Sound System	yes
Cockpit speakers	yes
Clock - barometer	yes
Fire extinguisher	yes
Latest extinguisher survey	2022
Extra info	Spare: anchor Danfort fluke 40kg

RIGGING

Rigging	cutter
Standing rigging	Fitted 2015
Brand mast	Z-Spar
Material mast	Aluminium
Spreaders	2
Mainsail	2015 by Depoorter
Mainsail cover	yes
Furling boom	Romar leisure Furl
Jib	Newly
Genoa	Newly
Genoa furler	yes
Boomvang	hydraulic Southern Spars

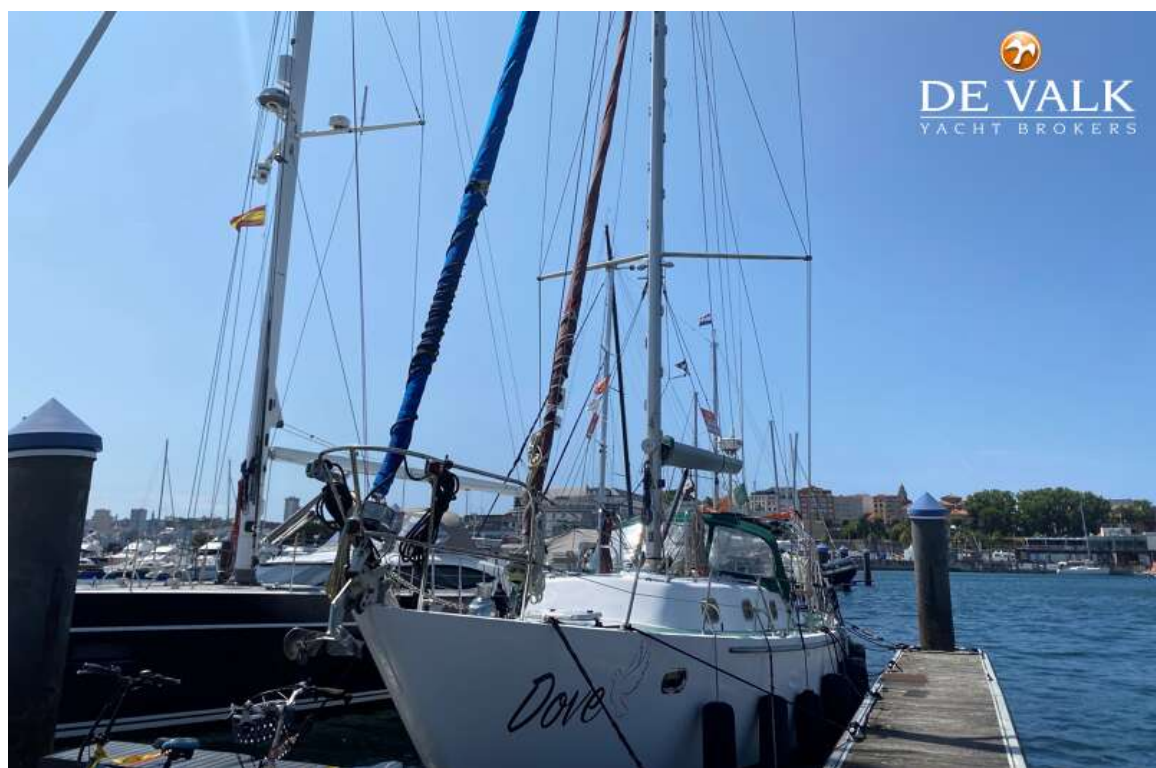
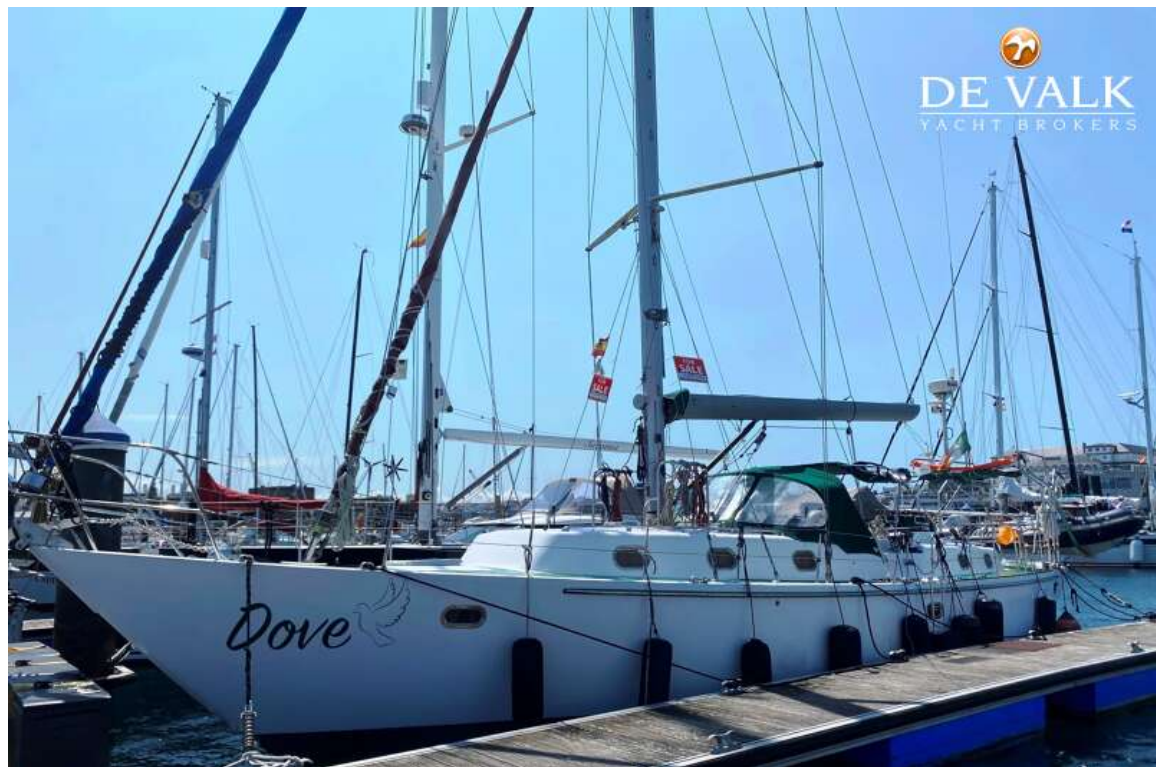


SPENCER 53 SLOOP

Primary sheet winch	2 Lewmar 55
Secondary sheet winch	2 Lewmar 43
Genoa sheetwinches	2 Barient 35 for the gib sheets
Multifunctional winches	2 Lewmar 35



SPENCER 53 SLOOP



SPENCER 53 SLOOP



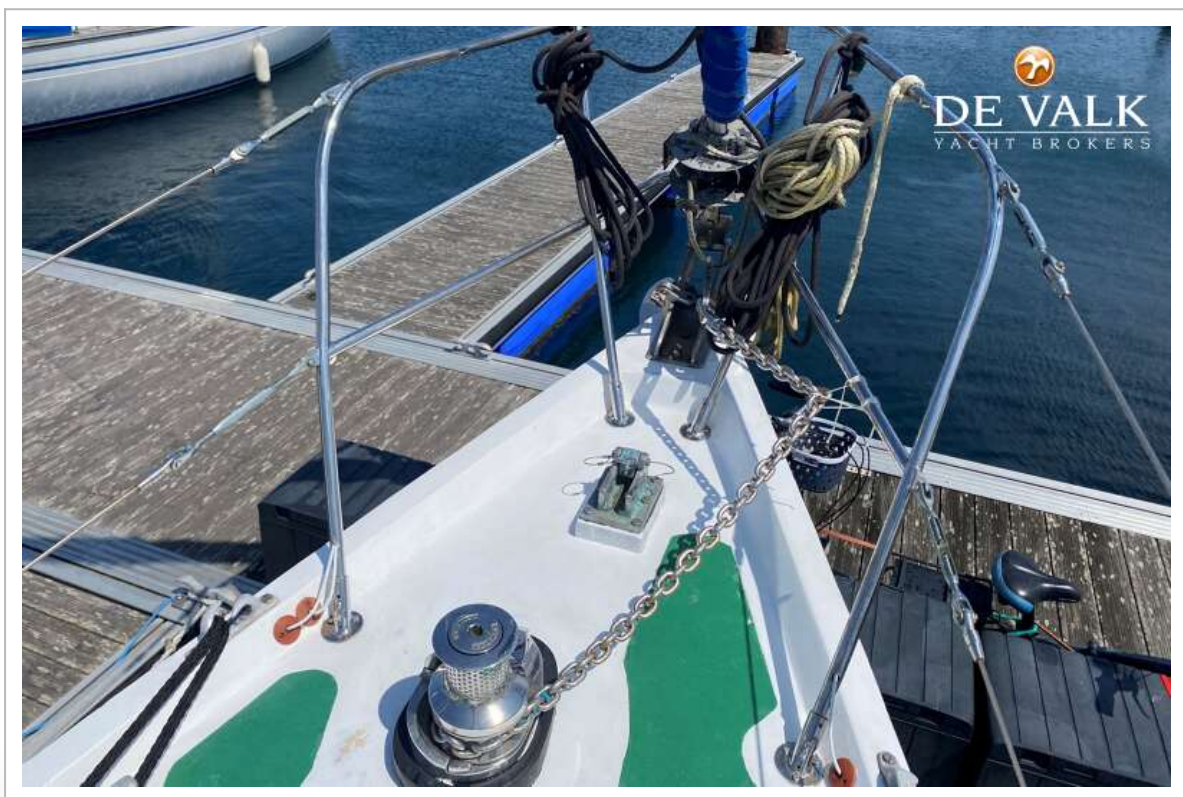
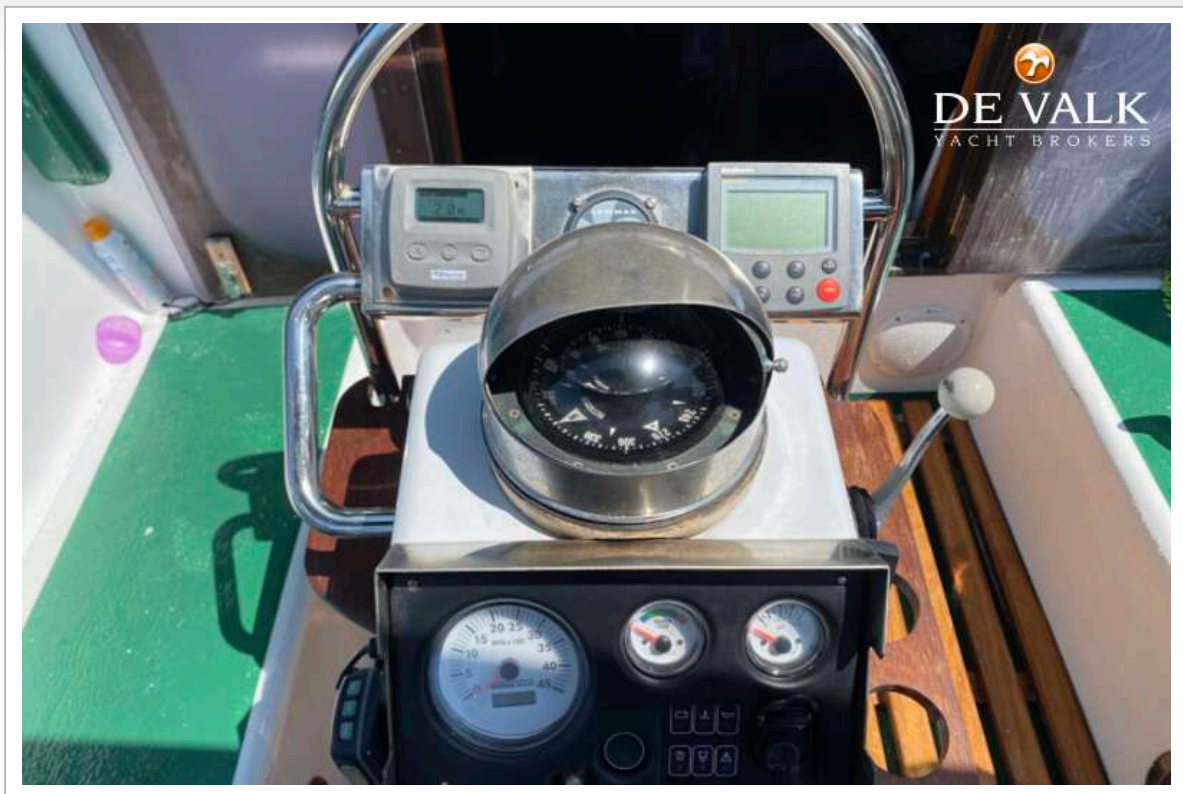
SPENCER 53 SLOOP



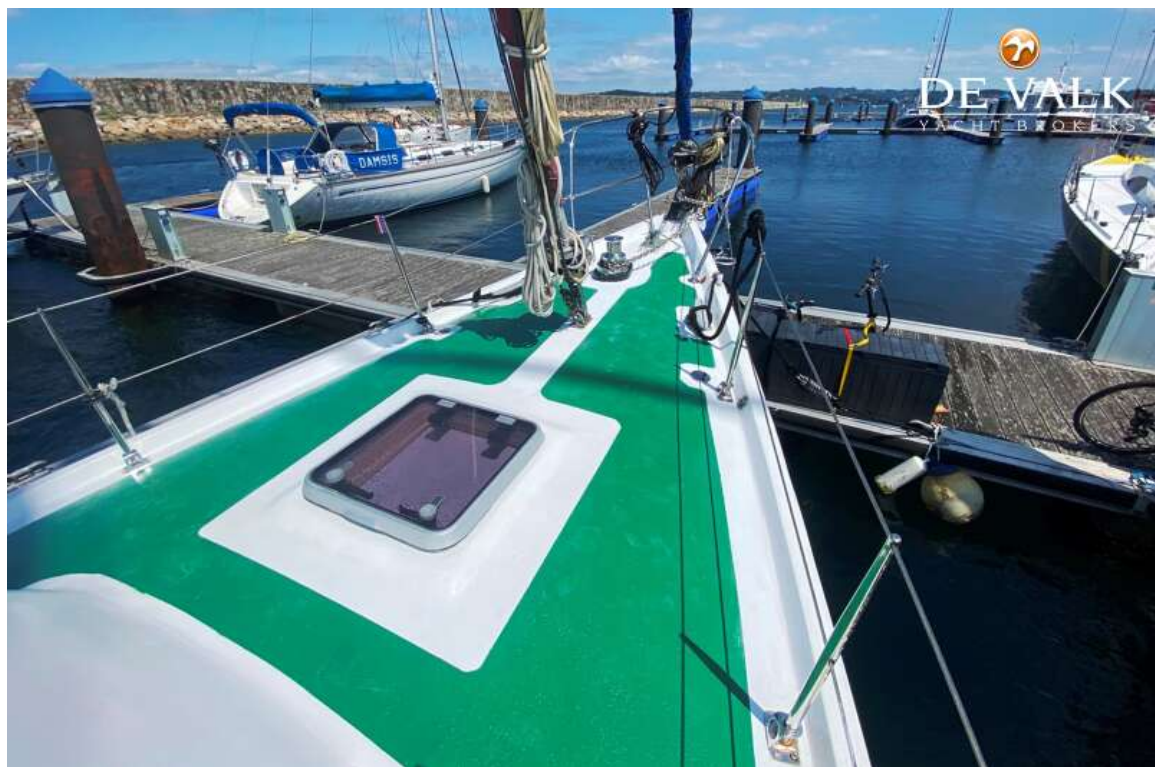
SPENCER 53 SLOOP



SPENCER 53 SLOOP



SPENCER 53 SLOOP



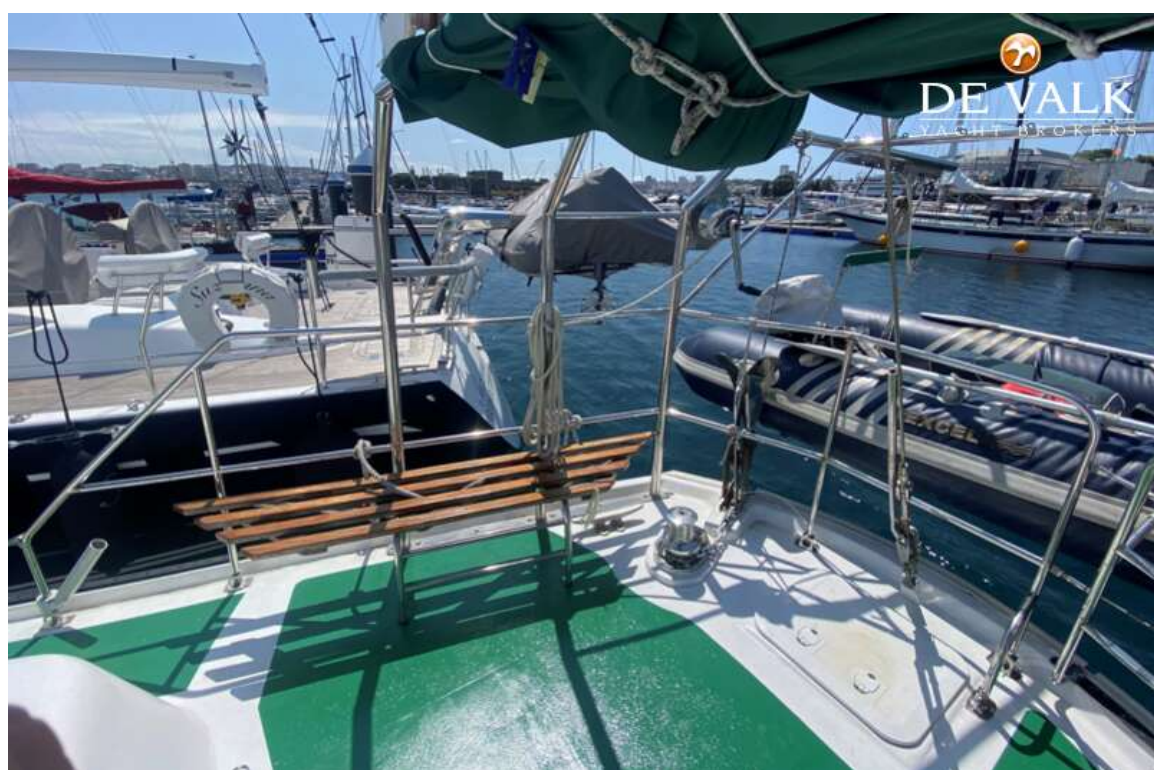
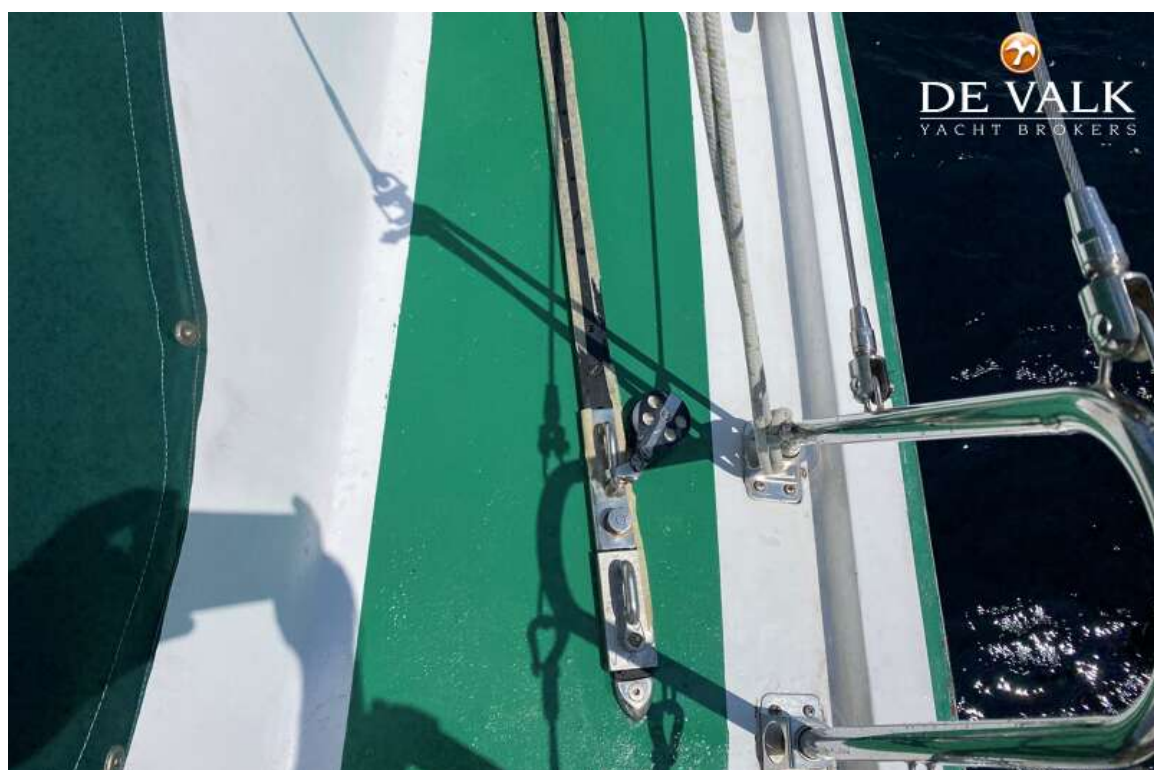
SPENCER 53 SLOOP



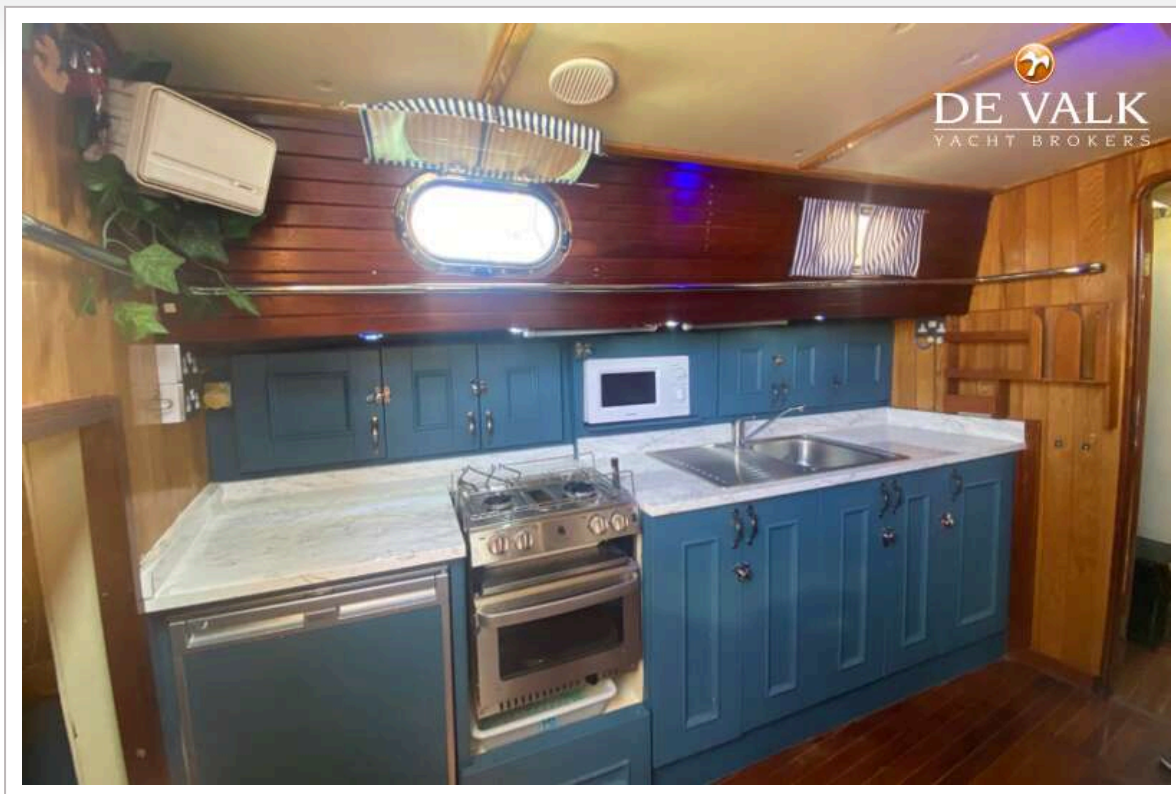
SPENCER 53 SLOOP



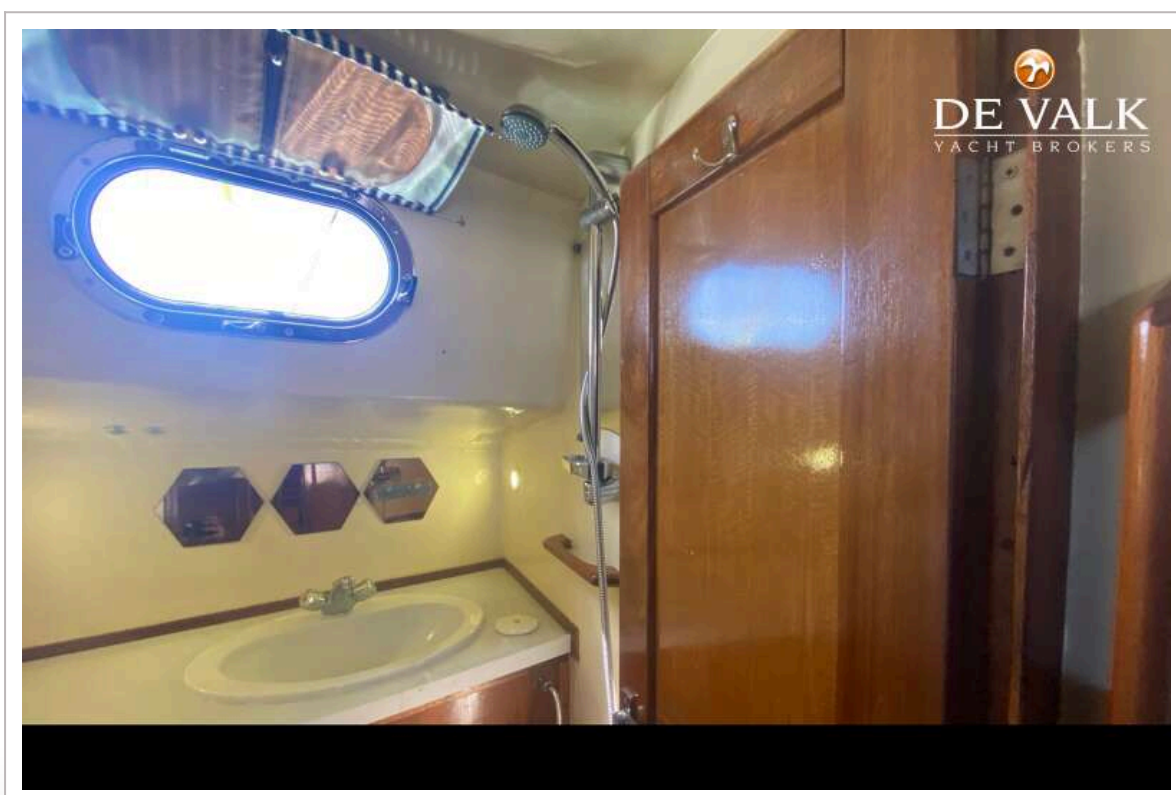
SPENCER 53 SLOOP



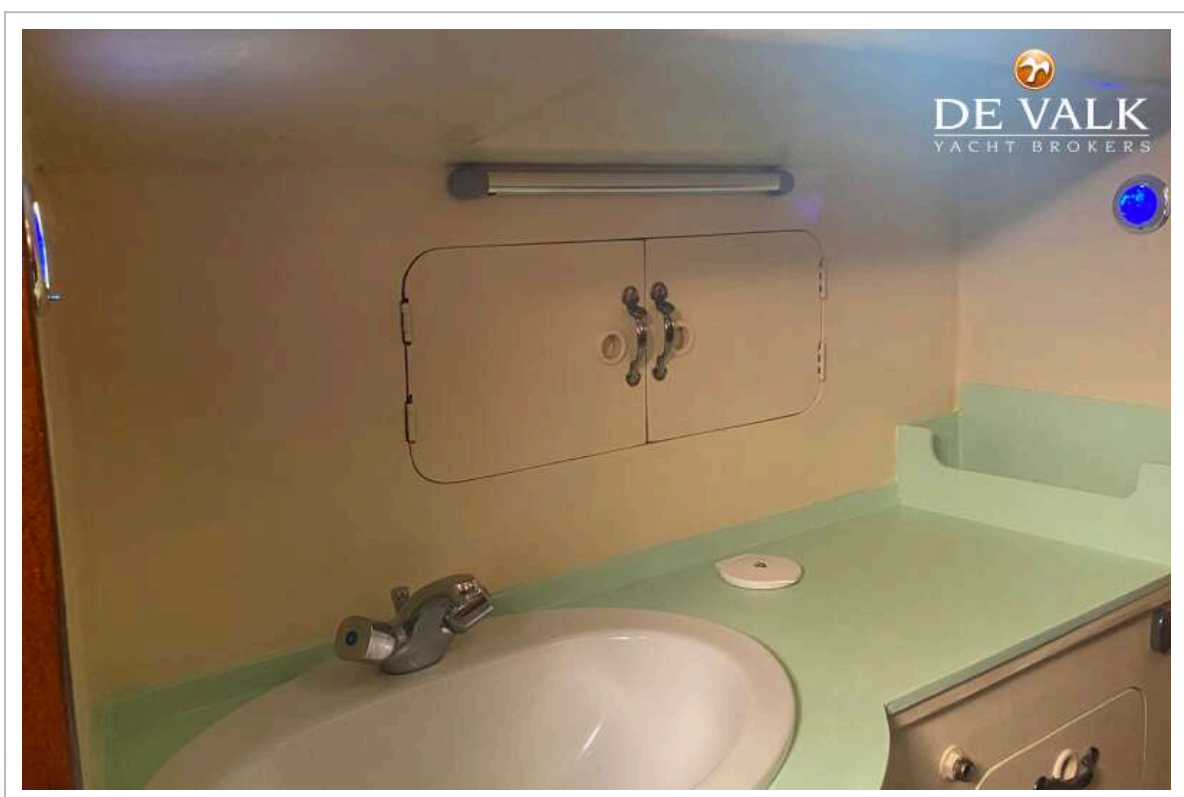
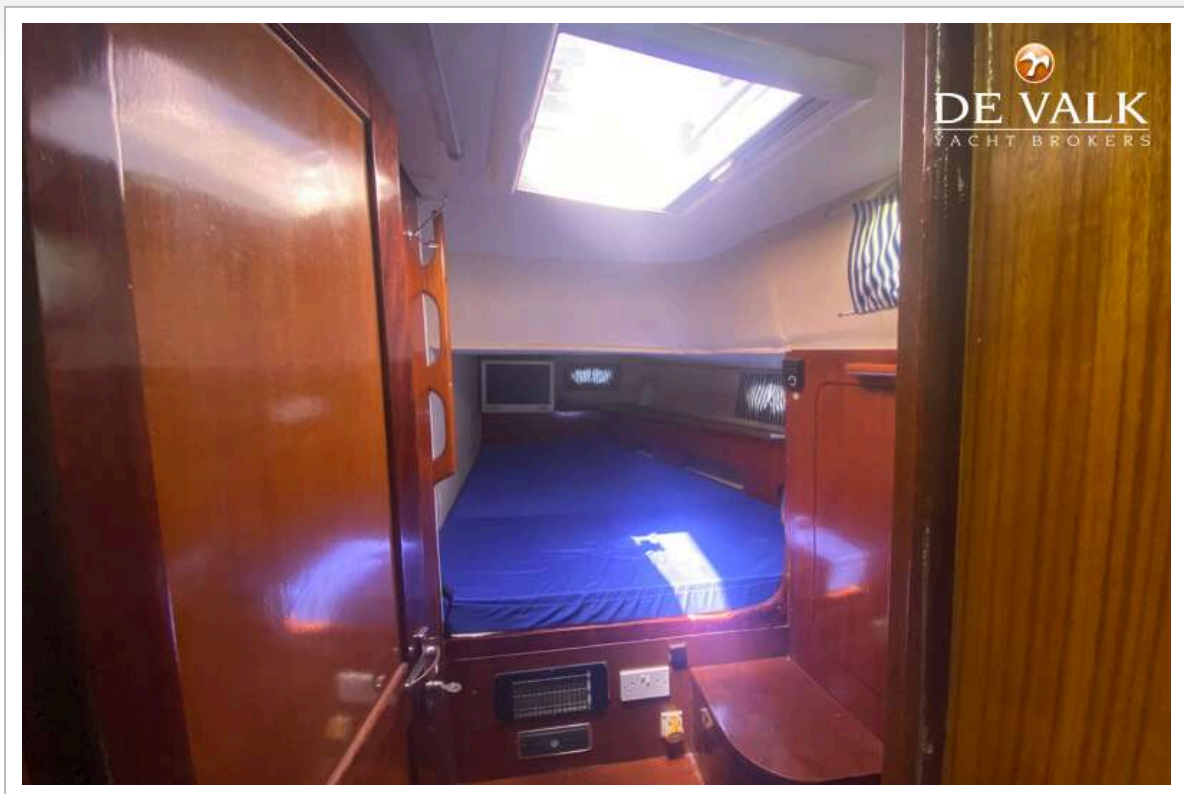
SPENCER 53 SLOOP



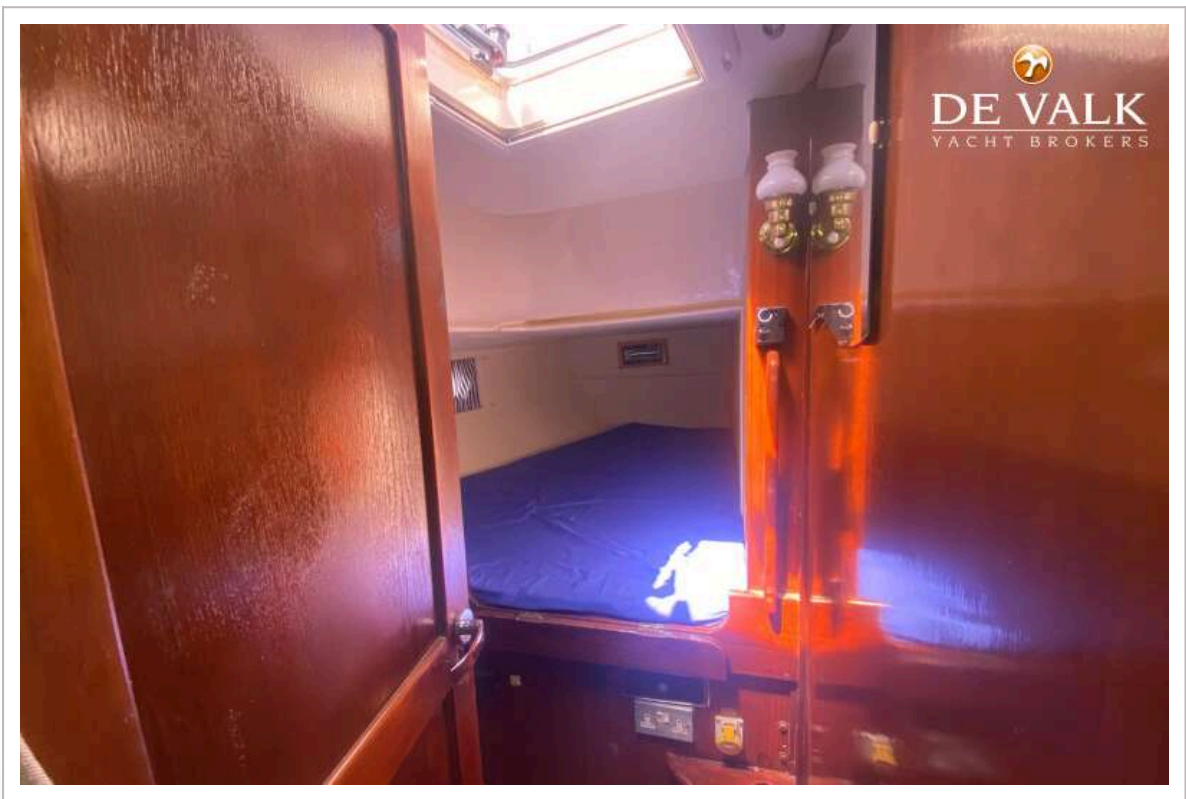
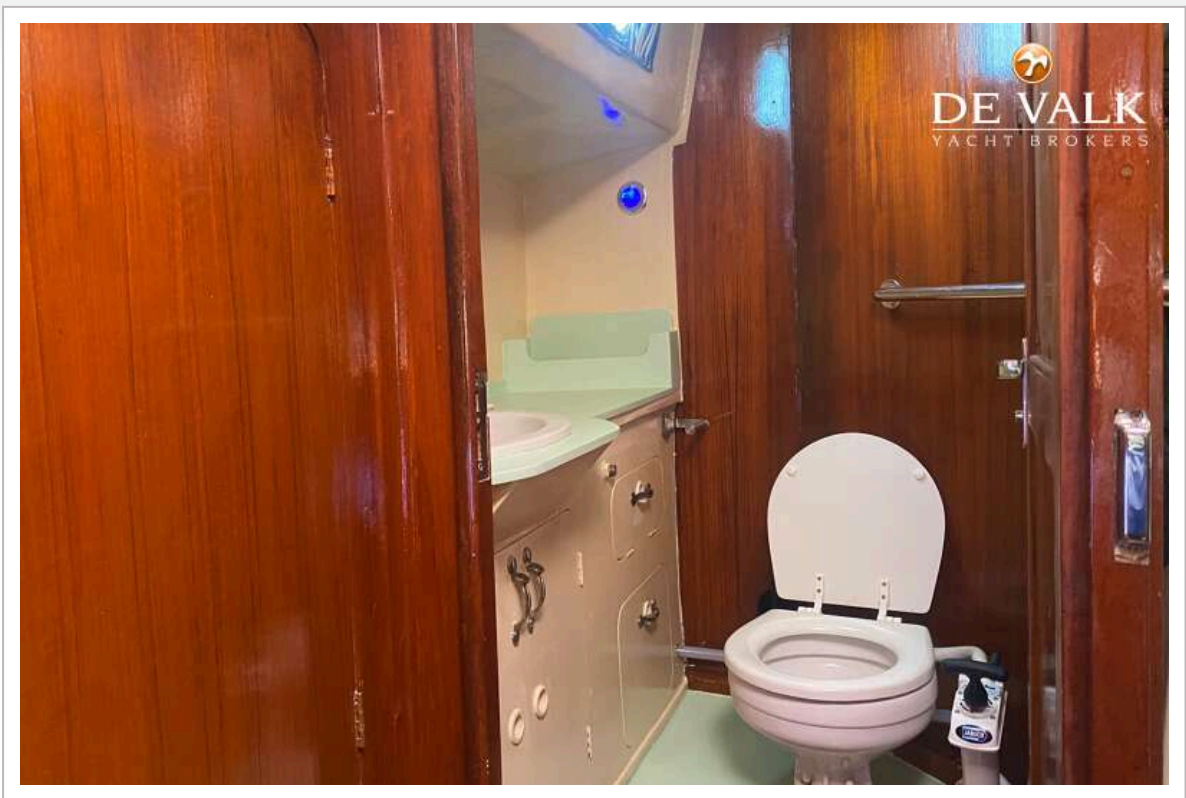
SPENCER 53 SLOOP



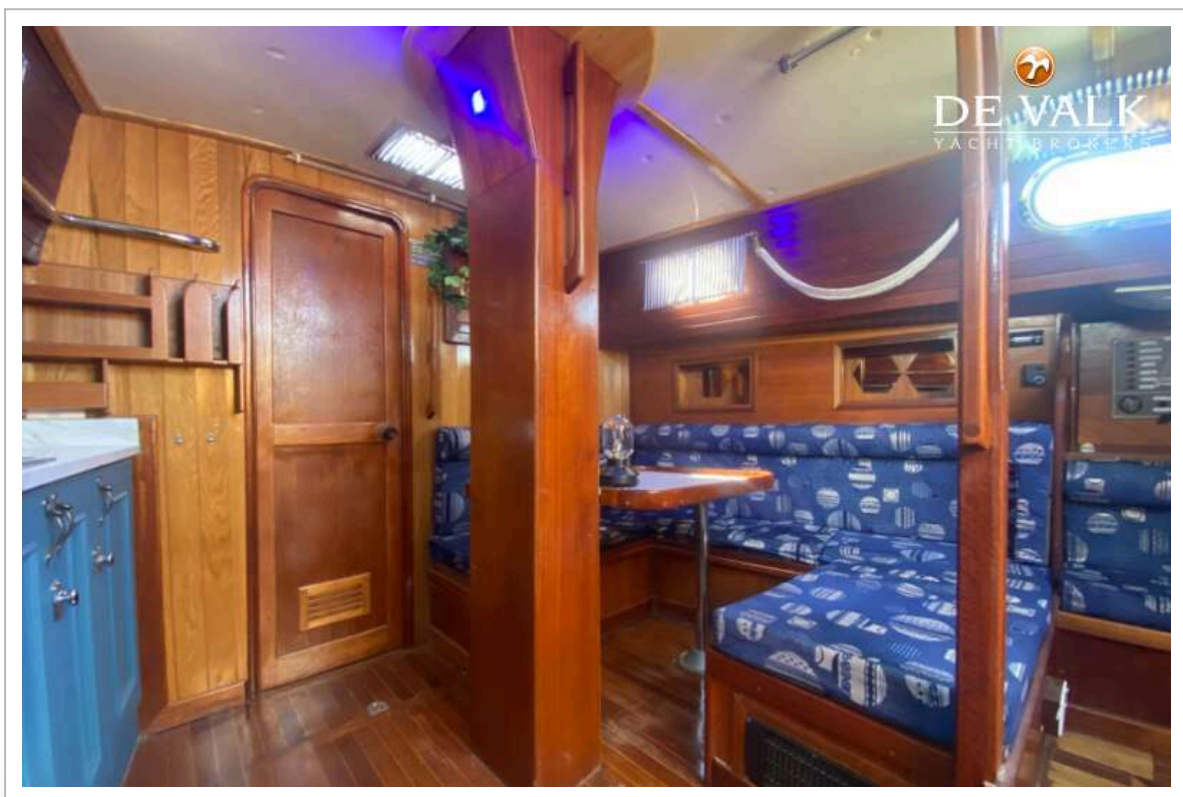
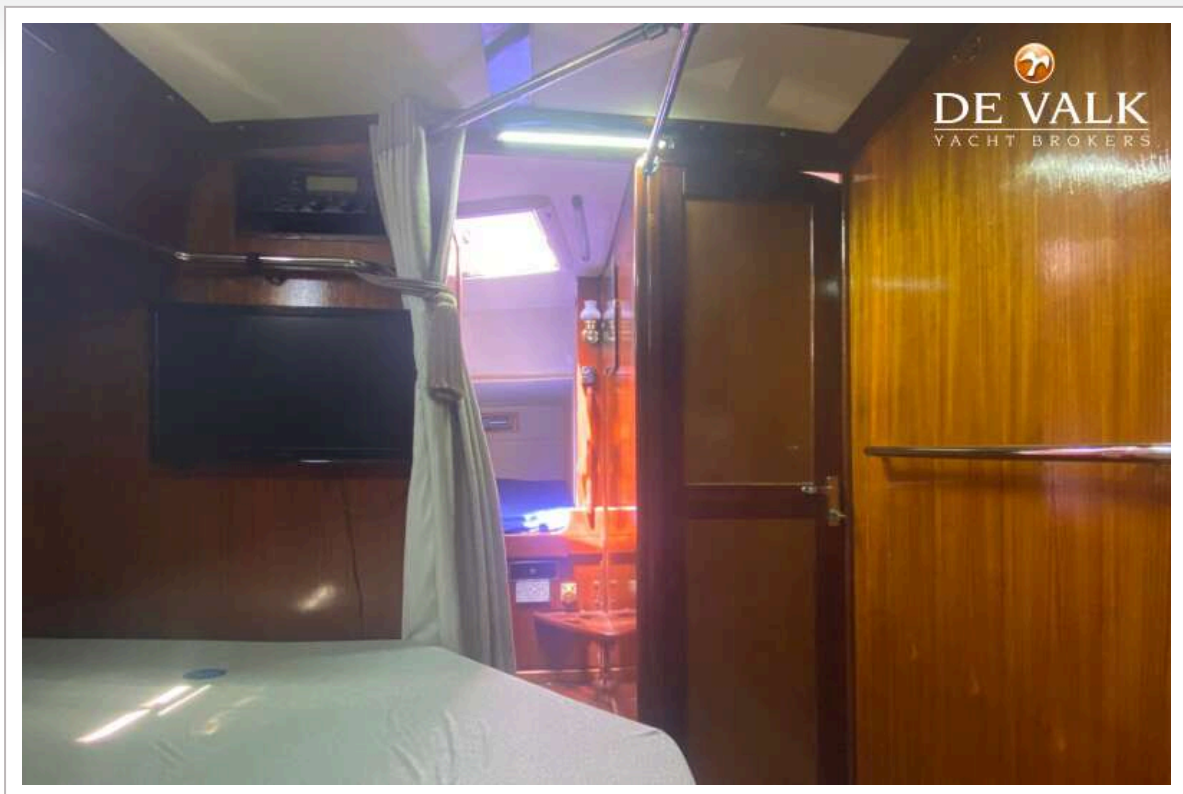
SPENCER 53 SLOOP



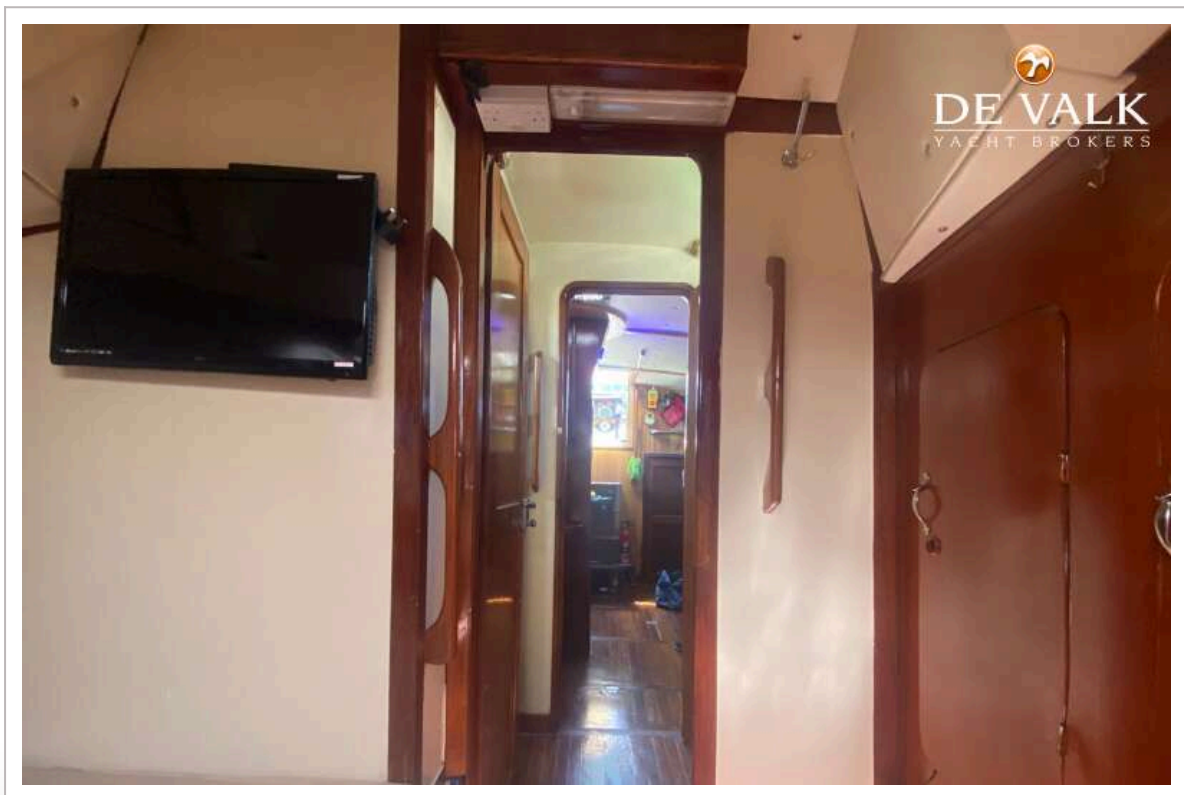
SPENCER 53 SLOOP



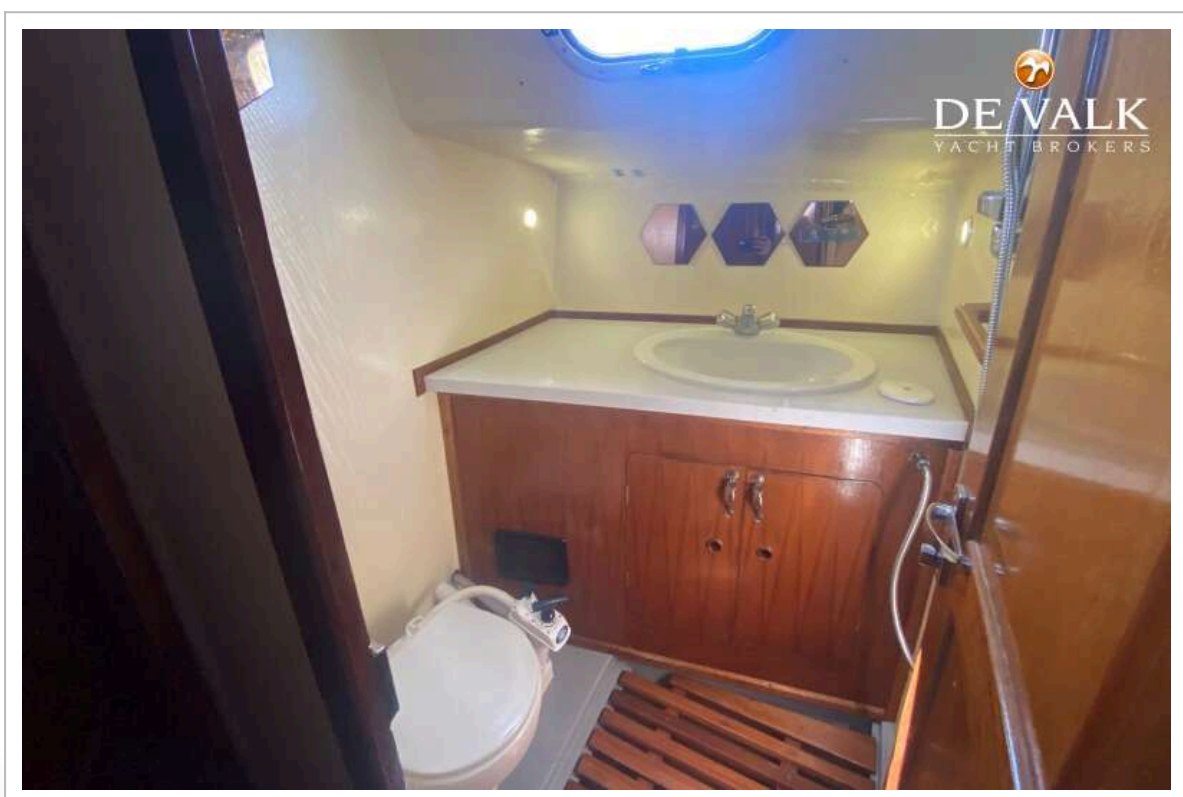
SPENCER 53 SLOOP



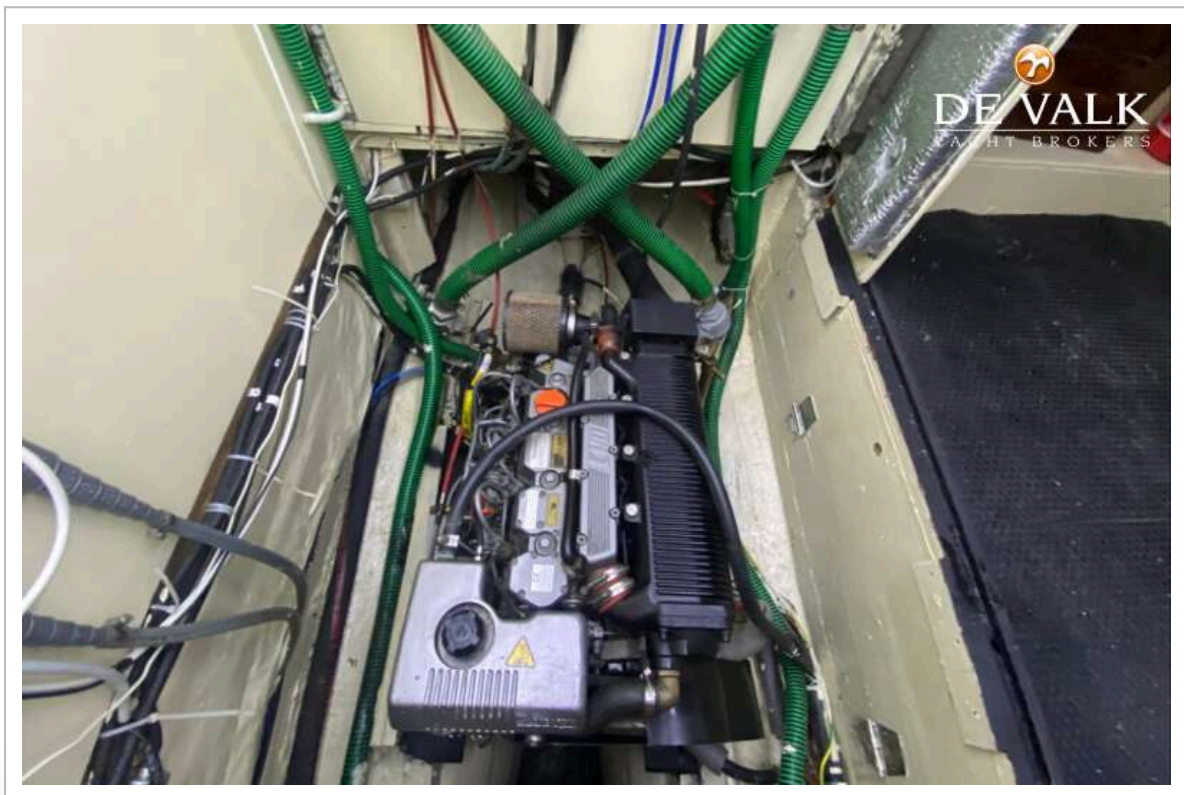
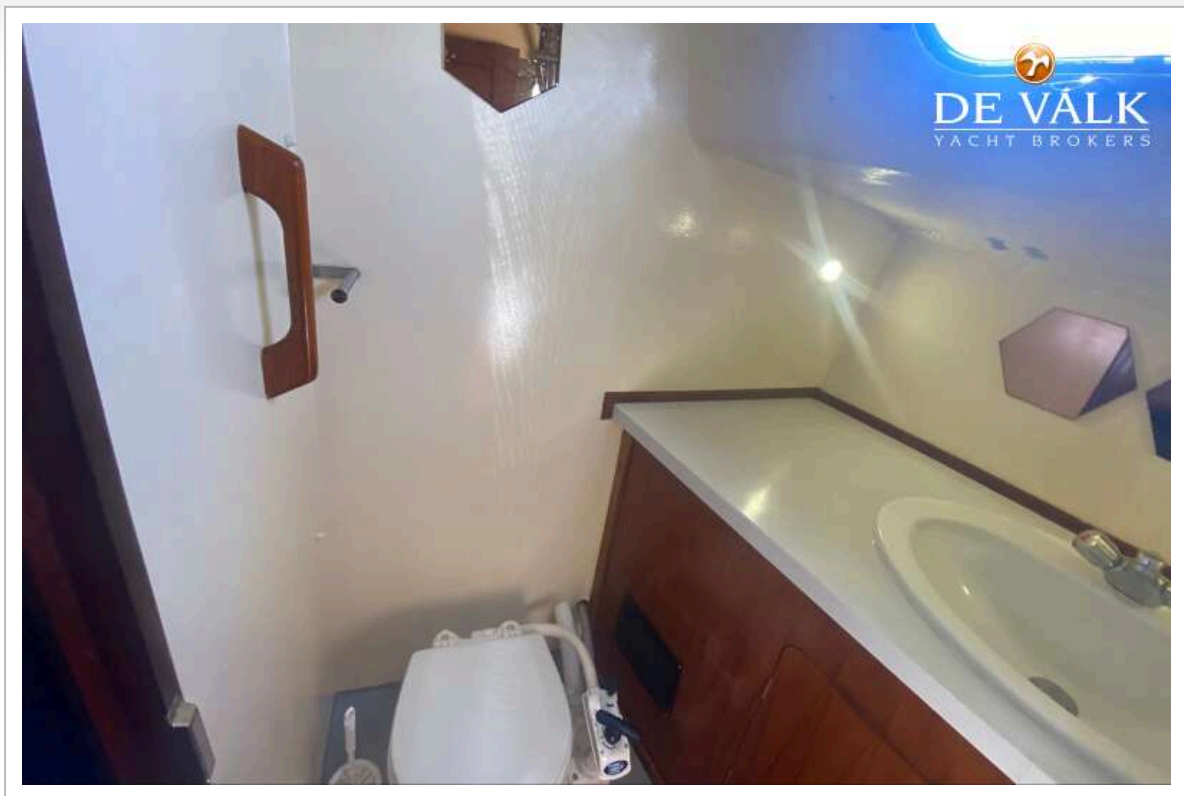
SPENCER 53 SLOOP



SPENCER 53 SLOOP



SPENCER 53 SLOOP



SPENCER 53 SLOOP

