



## HANSE 540E

## BROKER'S COMMENTS

A perfectly maintained Hanse 540e built in 2009 with the long keel (draft 2,8m) which allows a reduced ballast that is giving her excellent sailing performance. She had a complete rig refit in 2020/2021 with a new Selden aluminium furling mast , new stainless steel standing rigging, new main sail, new battery packs, new coppercoat etc. She has a luxurious 3 cabin layout with a large master cabin with ensuite bathroom in the bow and 2 aft cabins with each their own ensuite bathroom. She was always privately owned and used. She is now in the yard where she will be serviced and ready to go.

*Reinoud Bicker Caarten*

## SPECIFICATIONS

<b>Dimensions</b>	16.08 x 4.91 x 2,80 / 0.00 (m)	<b>Builder</b>	Hanse Yachts AG.
<b>Built</b>	2009	<b>Cabins</b>	3
<b>Material</b>	Composite	<b>Berths</b>	7
<b>Engine(s)</b>	1 x Yanmar HTE 4 JH4-HTE diesel	<b>Hp/Kw</b>	110.00 (hp), 80.96 (kw)
<b>Asking price</b>	sold (VAT )	<b>Lying</b>	at sales office

## CONTACT

<b>Sales office</b>	De Valk Portugal	<b>Telephone</b>	+351 308 812321
<b>Address</b>	Edifício Administrativo - Ponta da Areia 8500 - 345 Portimão PT	<b>E-mail</b>	portugal@devalk.nl

## DISCLAIMER

These particulars are given in good faith as supplied but cannot be guaranteed.



## GENERAL

Model	HANSE 540E
Type	sailing yacht
LOA (m)	16,08
Beam (m)	4,91
Draft min (m)	2,80
Air draft (m)	26,50
Headroom (m)	2,05
Year built	2009
Builder	Hanse Yachts AG.
Country	Germany
Designer	Judel&Vrolijk
Displacement (t)	19
Ballast (tonnes)	cast iron and lead
Gross tonnage	21,7
CE norm	A
Hull material	composite
Hull colour	off-white
Hull shape	round-bilged
Keel type	fin keel with bulb
Superstructure material	composite
Rubbing strake	aluminum
Deck material	composite
Deck finish	teak
Superstructure deck finish	teak
Cockpit deck finish	teak
Antifouling (year)	coppercoat 2022
Window frame	aluminium
Window material	polycarbonate
Deckhatch	yes
Portholes	aluminium 8



Fuel tank (litre)	stainless steel 375L
Level indicator (fuel tank)	yes
Freshwater tank (litre)	stainless steel 2x 350L
Blackwater tank (litre)	polyethylene 3x30L
Blackwater tank extraction	deck extraction + uw line
Wheel steering	cable steering Double
Emergency tiller	yes

## ACCOMMODATION

Cabins	3
Berths	7
Interior	American cherry varnished
Floor	wood
Open cockpit	yes
Aft deck	yes
Headroom saloon (m)	2,05
Heating	diesel ducted hot air Webasto
Air-conditioning	single cycle airco
Navigation center	yes
Chart table	yes
Aft Cabin	2x 2pax
Dinette	yes
Galley	yes
Countertop	corian
Sink	Corian
Cooker	calor gas 3 burner
Oven	yes
Fridge	yes
Freezer	yes
Hot water system	220V + engine 60L boiler
Water pressure system	electrical



Hot water tap	yes
Owners cabin	double bed + single bed
Bed length (m)	2,00m
Wardrobe	hanging and shelves
Bathroom	en suite
Toilet	en suite
Toilet system	electric
Wash basin	in the bathroom
Shower	en suite
Guest cabin 1	double bed
Wardrobe	hanging and shelves
Bathroom	en suite
Toilet	en suite
Toilet system	electric
Wash basin	in the bathroom
Shower	en suite
Guest cabin 2	double bed
Bed length (m)	2,00m
Wardrobe	hanging and shelves
Bathroom	en suite
Toilet	en suite
Toilet system	electric
Wash basin	in the bathroom
Shower	en suite
Washing machine/dryer combi	In owners cabin

## MACHINERY

No of engines	1
Make	Yanmar
Type	HTE 4 JH4-HTE
HP	110



<b>kW</b>	80.96
<b>Fuel</b>	diesel
<b>Year installed</b>	2009
<b>Maximum speed (kn)</b>	8,5
<b>Cruising speed (kn)</b>	7
<b>Consumption (l/hr)</b>	5
<b>Range (nm)</b>	500
<b>Engine hours</b>	2100 est.
<b>Engine cooling system</b>	freshwater heat exchanger
<b>Drive</b>	shaft
<b>Engine controls</b>	bowden cable
<b>Gearbox</b>	mechanical
<b>Bowthruster</b>	electric Retractable
<b>Gearbox</b>	mechanical
<b>Exhaust</b>	watercooled
<b>Propeller type</b>	feathering Maxprop
<b>Propeller blades</b>	bronze
<b>Propeller shaft material</b>	stainless steel Cutlass bearing new 2021
<b>Shaft lubrication</b>	water
<b>Manual bilge pump</b>	yes
<b>Electric bilge pump</b>	yes
<b>Electrical installation</b>	12/220
<b>Generator</b>	silent separator Fisher Panda
<b>Batteries</b>	3 different banks
<b>Start battery</b>	new 2023 110Ah Varta
<b>Service battery</b>	new 2023 4x 110Ah Tudor deep cycle
<b>Electric engine battery</b>	for winches, windlass, bowthruster 6x110Ah Varta new 2023
<b>Battery monitor</b>	yes
<b>Battery charger</b>	2x Victron
<b>Inverter</b>	Victron
<b>Shorepower</b>	yes
<b>Watermaker</b>	Sea recovery, Aqua matic



## NAVIGATION

Compass	Plastimo Contest 130
Electric compass	B&G
Multi control display	new 2016 B&G Zeus 2 12inch hybrid
Depth sounder/log	Simrad
Windset	Simrad tridata
Repeater	yes
VHF	B&G
VHF handheld	B&G
Autopilot	Simrad
Rudder angle indicator	Simrad
Radar/GPS/plotter	B&G
Electronic chart(s)	Europe, west med. Azores, canary isles
AIS transceiver	yes
Navigation lights	yes

## EQUIPMENT

Sprayhood	yes
Bimini	yes
Window cover	yes
Cockpit cushions	yes
Cockpit table	yes
Bathing platform	yes
Transom door	yes
Gangway	Wood
Deck shower	Cold&warm
Anchor	Ultra stainless steel 35kg
Anchor chain	10mm stainless steel 100m
Anchor 2	Delta 25kg
Windlass	electrical
Sea railing	stainless steel



Grab rail (superstructure)	stainless steel
Pushpit	yes
Pulpit	yes
Life raft	container Plastimo Transocean class 2 8pax
Last life raft survey	2020
Lifejackets	8x
Safety harness	8x
Lifebuoy	2x
Safety lines on deck	yes
Fenders	8
Mooring lines	8
Spare parts	yes
Radio-cd player	1x saloon Clarion 1x master cabin Bose
Surround Sound System	Master cabin
Fire extinguisher	3x

## RIGGING

Rigging	fractional
Standing rigging	wire Stainless steel , new 2021
Brand mast	Seldén New 2021
Material mast	aluminium
Spreaders	2x2
Keel stepped mast	yes
Mainsail	Hyde sails 85,1m2 New 2020
Stoway mast	In mast furling
Jib	self tacking on furler 58m2 Hyde sails,new 2020
A-symetric spi	180m2 Hyde sails, new 2023 On furler
Backstay adjuster	hydraulic
Boomvang	mechanical and tackle
Primary sheet winch	electric 2x Lewmar 54ST
Secondary sheet winch	2x Lewmar 46ST



Gennaker pole

aluminium



# HANSE 540E



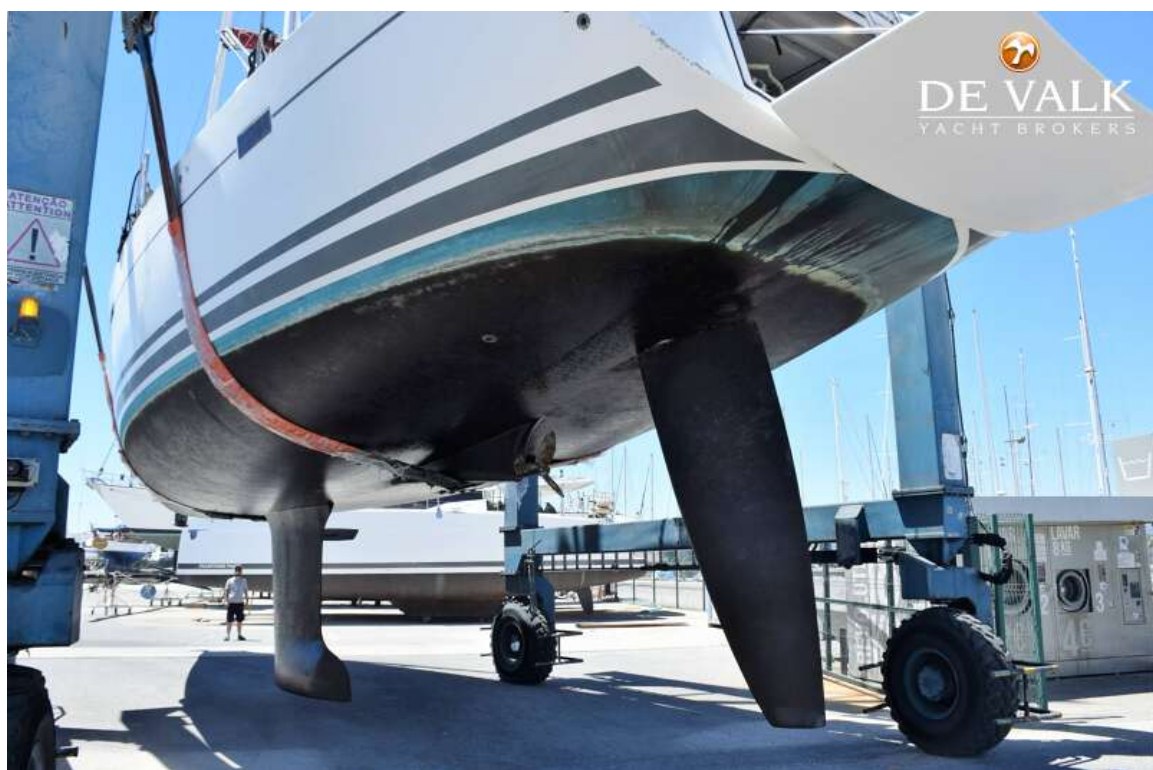
# HANSE 540E



# HANSE 540E



# HANSE 540E



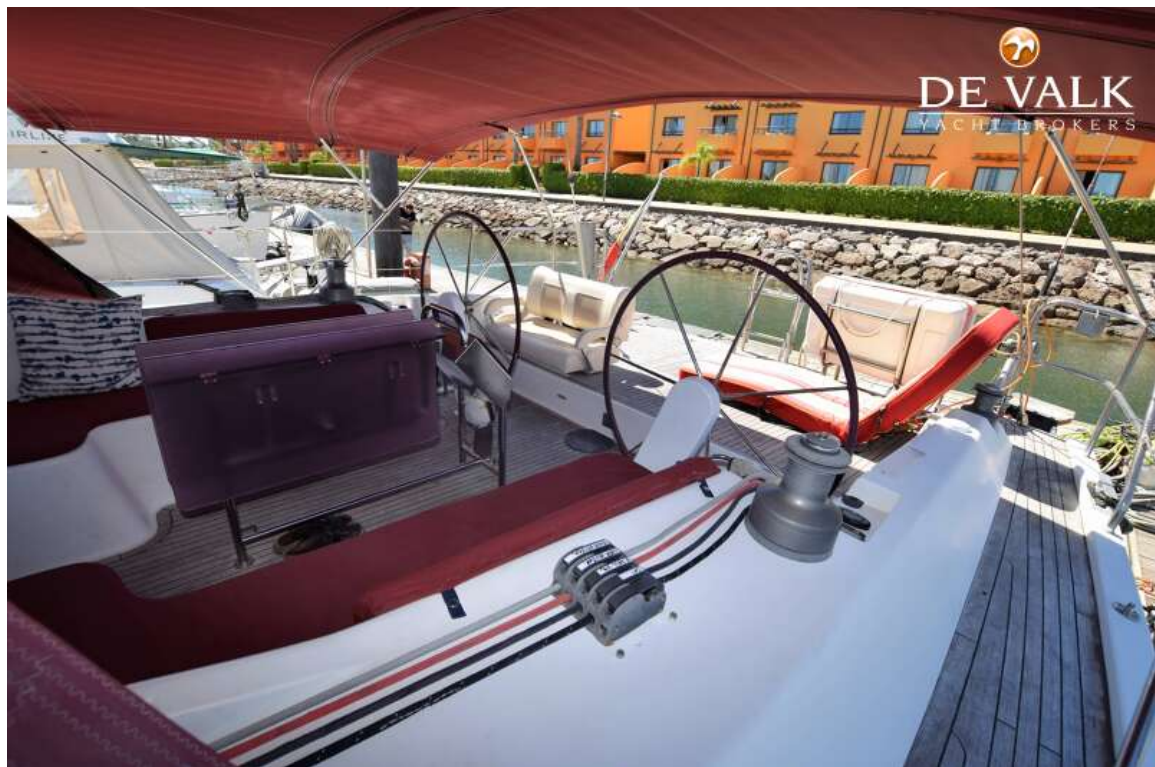
# HANSE 540E



# HANSE 540E



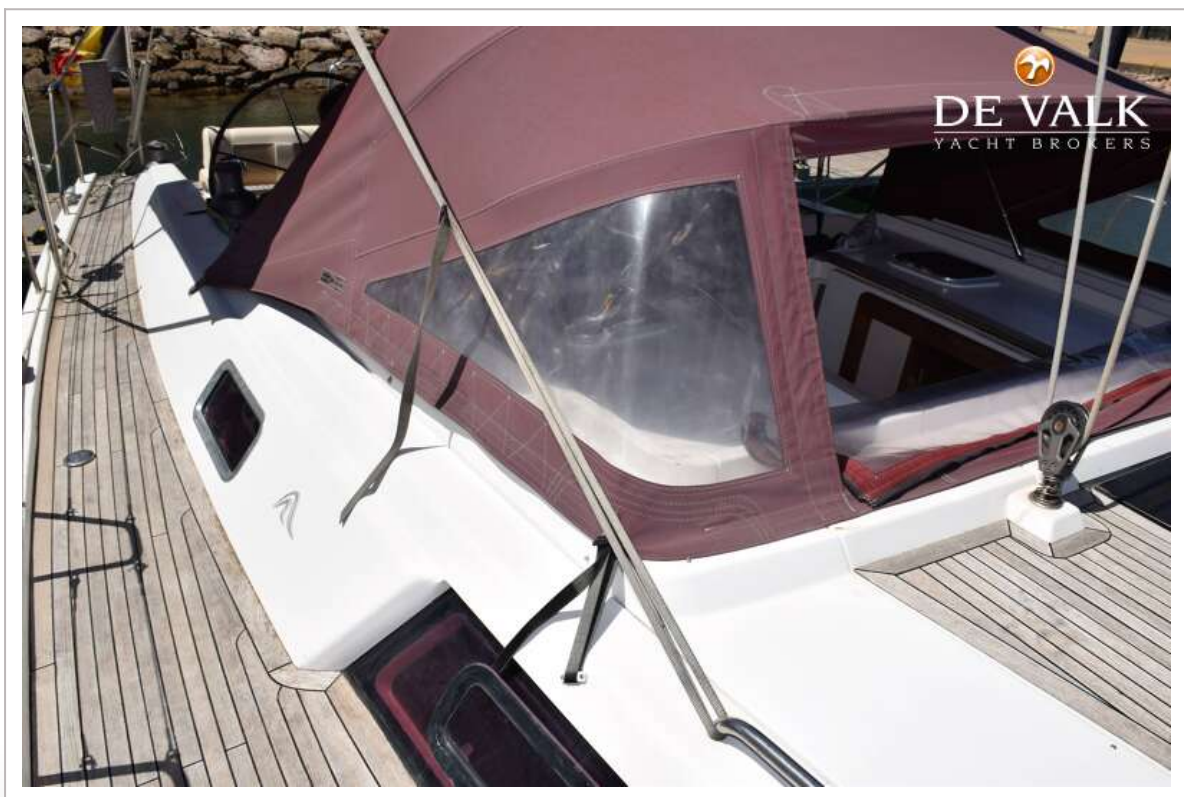
# HANSE 540E



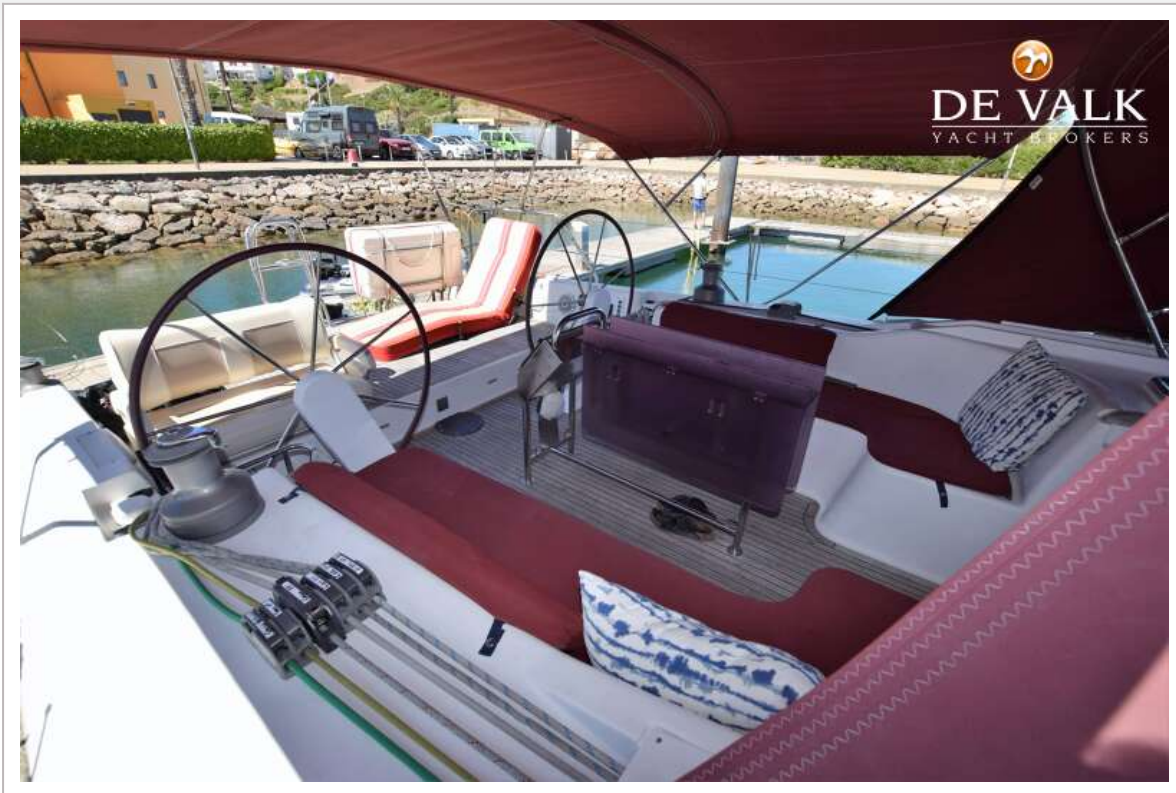
# HANSE 540E



# HANSE 540E



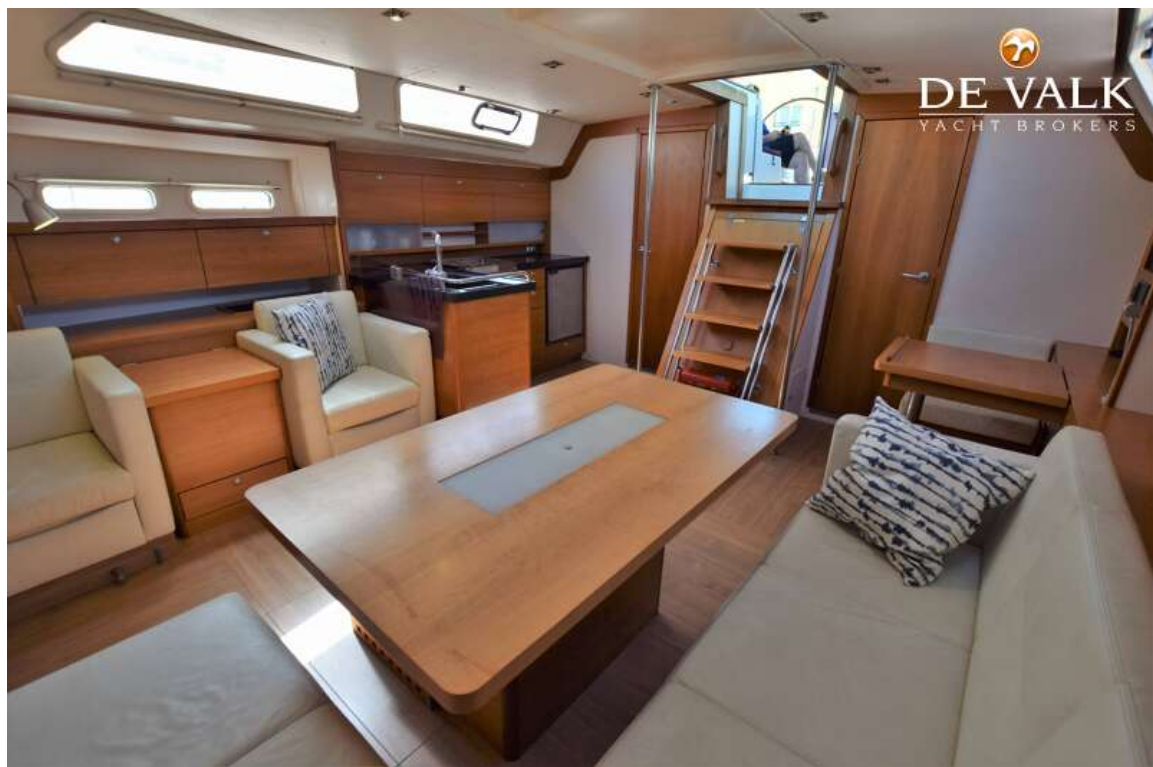
# HANSE 540E



# HANSE 540E



# HANSE 540E



# HANSE 540E



# HANSE 540E



# HANSE 540E



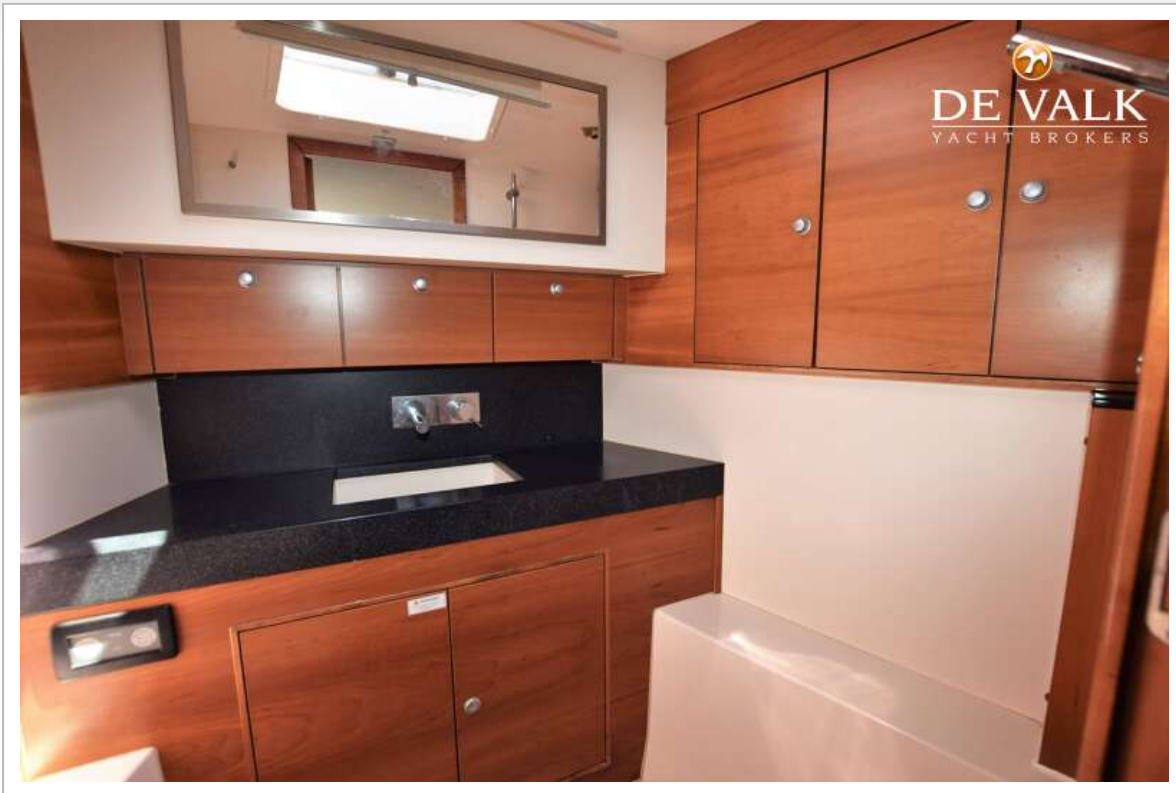
# HANSE 540E



# HANSE 540E



# HANSE 540E



# HANSE 540E

