



DE VALK
YACHT BROKERS



RODMAN 38 FLY



DE VALK
YACHT BROKERS

RODMAN 38 FLY

BROKER'S COMMENTS

"This capacious RODMAN 38 FLY has 2 Volvo Penta D6-400 IPS engines and a yacht controller, so this boat allows her navigators to relax and comfortably maneuver her at any given time. The spacious and private interior of the RODMAN 38 FLY counts two cabins with their own bathroom and shower. She is equipped with air-conditioning, generator and hydraulic gangway. The antifouling has been recently done on this RODMAN 38 FLY grants a smooth navigation qualifying her as sporty and reliable. Berth for this boat is available."

SPECIFICATIONS

Dimensions	11,60 x 3,81 x 1,10 (m)	Builder	Rodman
Built	2006	Cabins	2
Material	GRP	Berths	4
Engine(s)	2 x Volvo Penta D6-400 IPS diesel	Hp/Kw	2 x 310 (hp), 228,16 (kw)
	SOLD	Lying	at sales office

CONTACT

Sales office	De Valk Antibes	Telephone	+33 492 91 0202
Address	2, Avenue de Verdun 06600 Antibes France	Fax	+33 (0)492 91 0301
		E-mail	antibes@devalk.nl

DISCLAIMER

These particulars are given in good faith as supplied but cannot be guaranteed and cannot be used for contracts.



GENERAL

Model	RODMAN 38 FLY
Type	motor yacht
LOA (m)	11,60
LWL (m)	11,36
Beam (m)	3,81
Draft (m)	1,10
Headroom (m)	2,00
Year built	2006
Builder	Rodman
Country	Spain
Displacement (t)	11,2
CE norm	B
Hull material	GRP
Hull colour	white
Hull shape	deep-V
Superstructure material	GRP
Deck material	GRP
Cockpit deck finish	teak
Window material	glass
Flybridge	yes
Flybridge cover	yes
Flybridge cockpit cover	yes
Flybridge suncover	yes
Radar arch	yes
Fuel tank (litre)	aluminium 1000
Level indicator (fuel tank)	yes
Freshwater tank (litre)	aluminium 400
Level indicator (freshwater)	yes
Blackwater tank (litre)	yes
Level indicator (blackwater)	yes



RODMAN 38 FLY

Wheel steering	yes
Inside helm position	yes
Outside helm position	yes
Flybridge helm position	yes

ACCOMMODATION

Cabins	2
Berths	4
Interior	cherry
Floor	wood
Pilot house	yes
Saloon	yes
Air-conditioning	reverse cycle airco Frigomar - with remote control in cabins and deck saloon
Dinette	yes
Sliding door to aft deck	yes
Galley	yes
Countertop	yes
Sink	yes
Cooker	electric x2 FAGOR
Microwave	AD LINE
Fridge	fridge/freezer combo WRECO + one on the fly
Hot water system	220V + engine 40L
Owners cabin	double bed
Wardrobe	hanging and drawers
Bathroom	en suite
Toilet	en suite
Toilet system	manual
Wash basin	in the bathroom
Shower	en suite
Guest cabin 1	twin single



RODMAN 38 FLY

Wardrobe	hanging and drawers
Bathroom	en suite
Toilet	en suite
Toilet system	manual
Wash basin	in the bathroom
Shower	en suite

MACHINERY

No of engines	2
Make	Volvo Penta
Type	D6-400 IPS
HP	310
kW	228.16
Fuel	diesel
Maximum speed (kn)	30
Cruising speed (kn)	25
Engine hours	481
Drive	IPS
Engine controls	electrical
Gearbox	hydraulic
Propeller type	fixed IPS
Manual bilge pump	yes
Electric bilge pump	yes
Generator	3kW - Paguro 4000 - Diesel monocylindric Faryman
Batteries	x5
Battery monitor	yes
Battery charger/inverter	yes
Shorepower	with cable
Trimtabs	electric



NAVIGATION

Compass	Plastimo Offshore 105
Compass on flybridge	Plastimo Offshore 105
Depth sounder/log	x 2 Raymarine ST60
VHF	Fixed 25W Simrad RS82
Autopilot	Raymarine ST6002
Radar/GPS/plotter	Raymarine E80
Navigation lights	yes

EQUIPMENT

Bimini	yes
Cockpit cushions	yes
Bathing platform	yes
Boarding ladder	yes
Gangway	hydraulic
Deck shower	on cockpit
Anchor	BRUCE - 20kg
Anchor chain	40m
Windlass	electrical
Dinghy	yes
Outboard	Mercury 2.5hp
Grab rail (superstructure)	stainless steel
Wiper	yes
Horn	yes
Fenders	yes
Mooring lines	yes
Radio	yes
Radio-cd player	Pioneer
Cockpit speakers	yes
Speakers in salon	yes



Clock - barometer

VION analogic



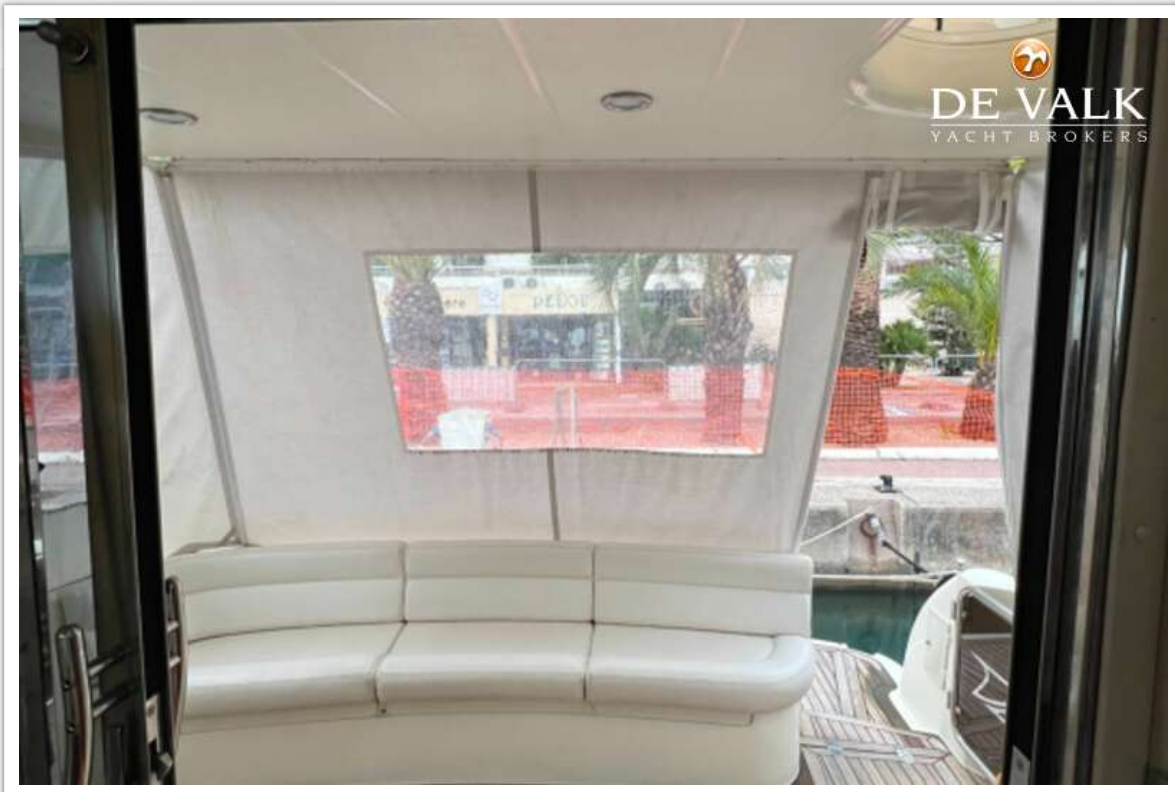
RODMAN 38 FLY



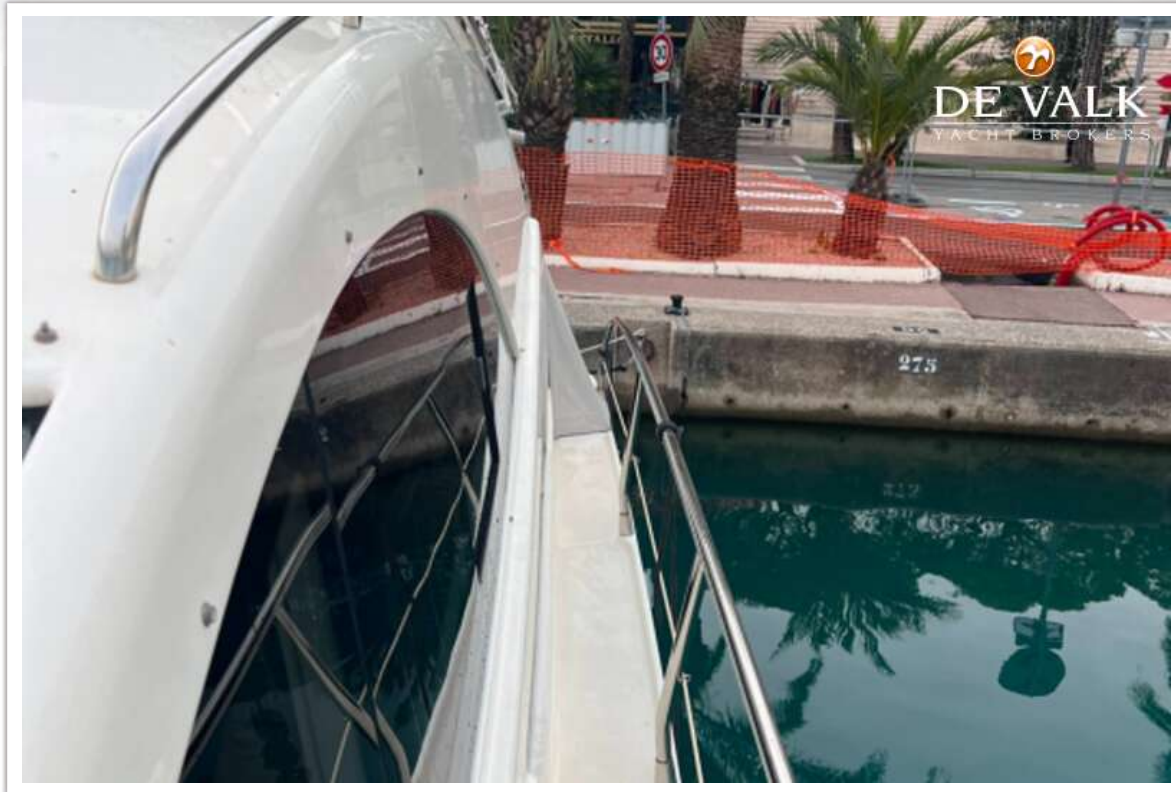
RODMAN 38 FLY



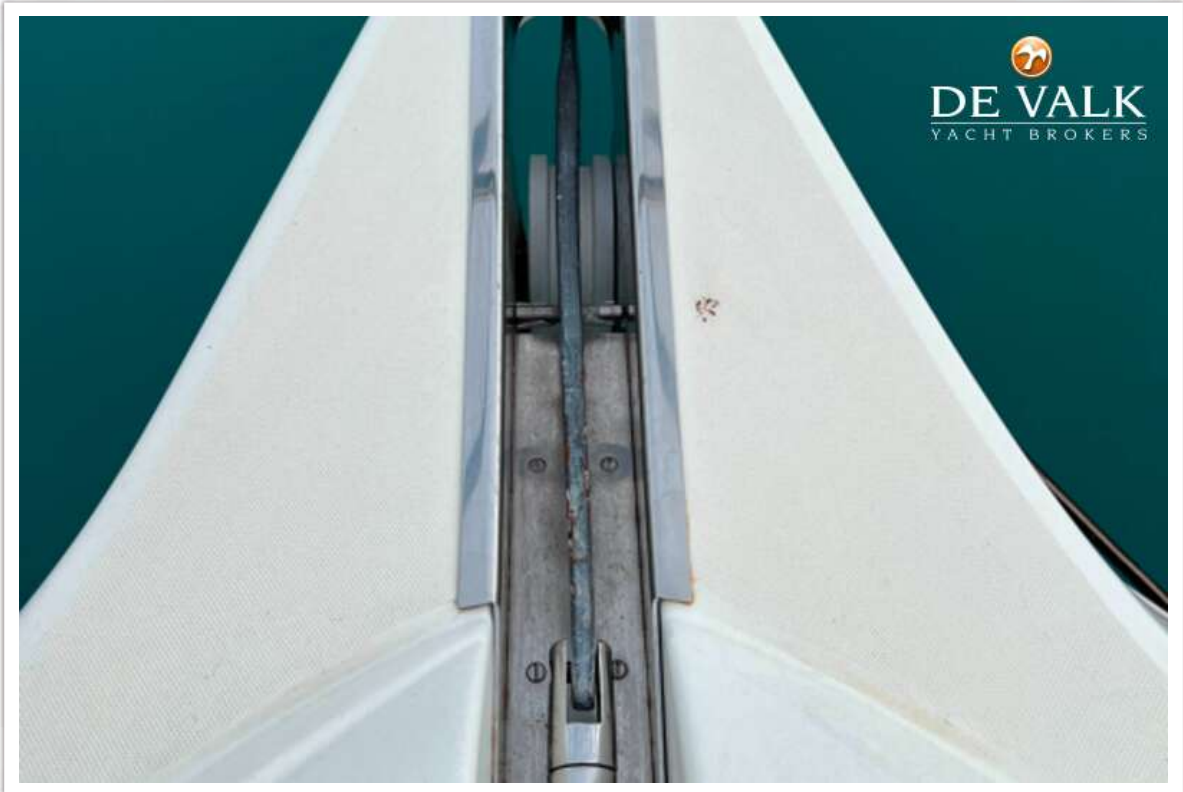
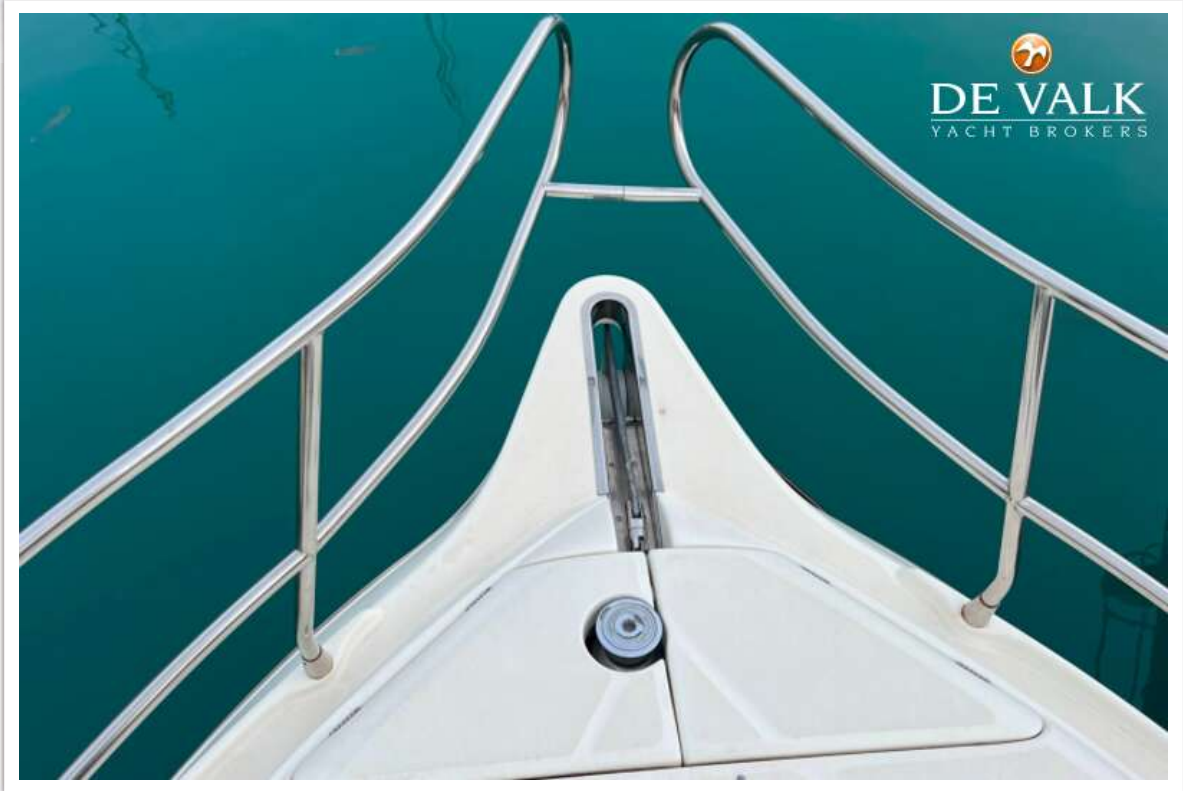
RODMAN 38 FLY



RODMAN 38 FLY



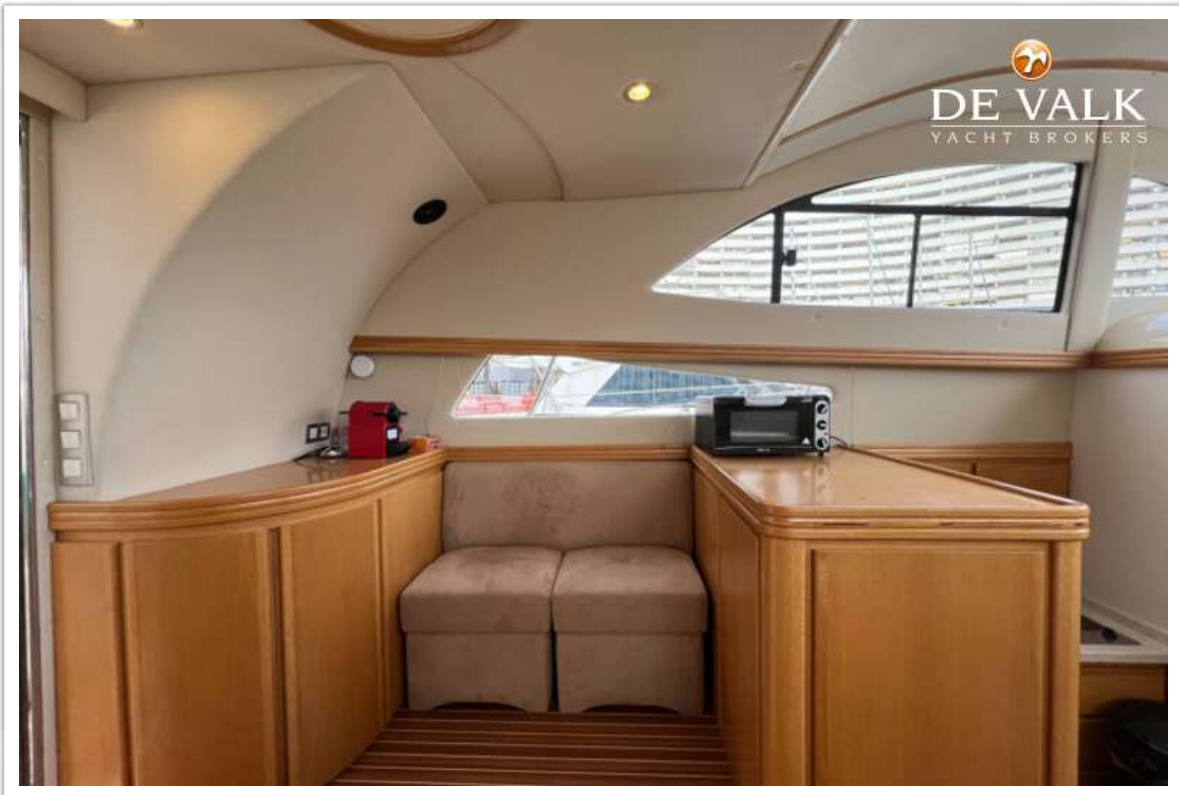
RODMAN 38 FLY



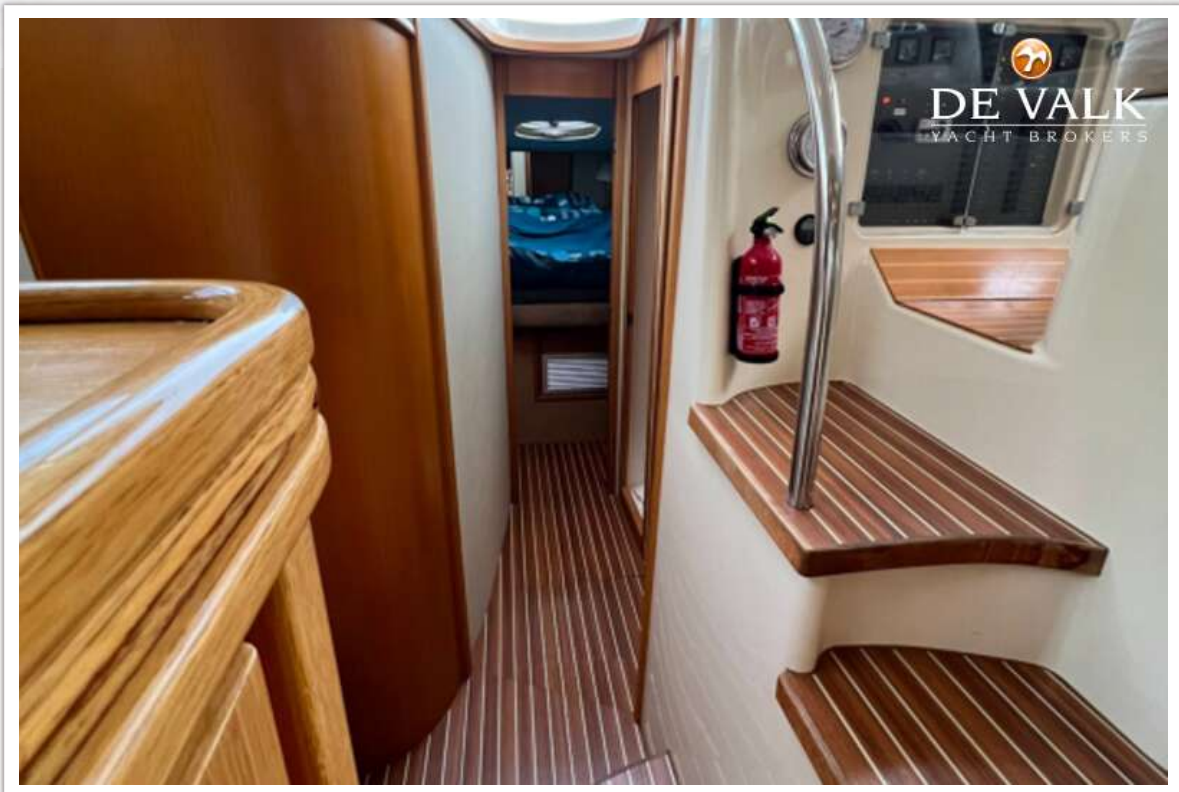
RODMAN 38 FLY



RODMAN 38 FLY



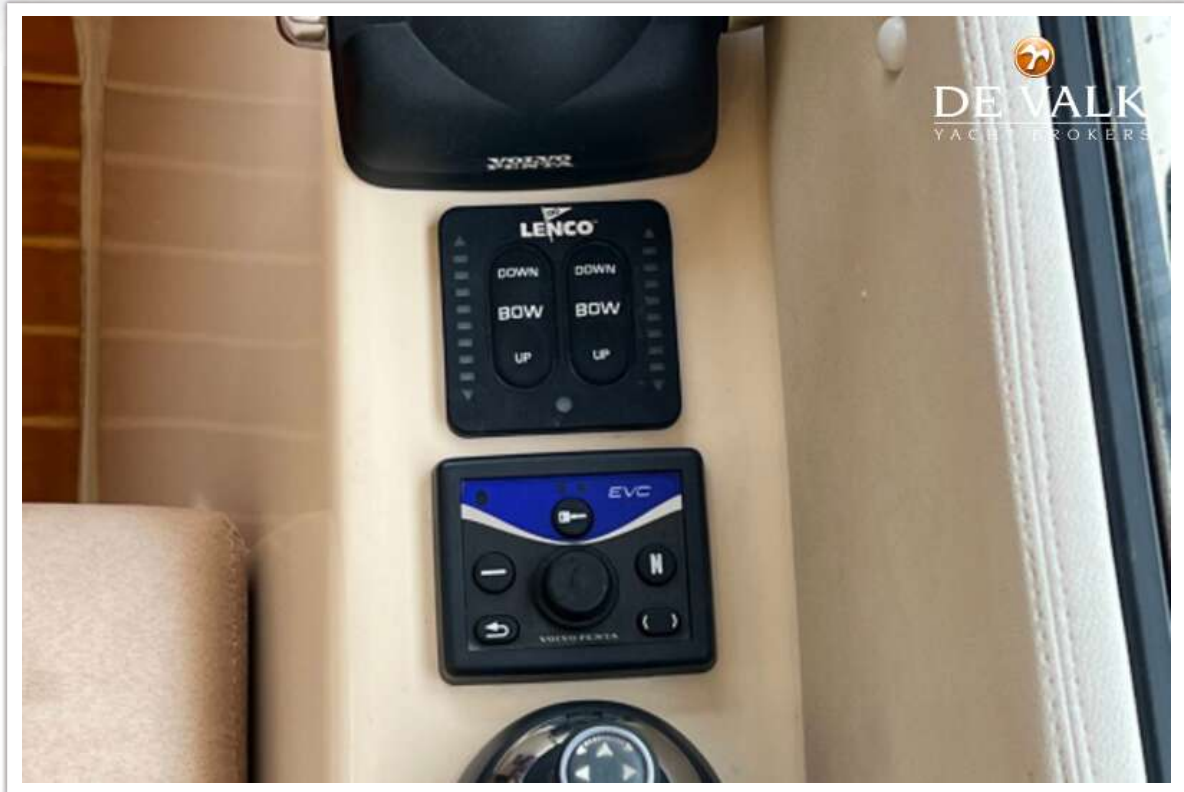
RODMAN 38 FLY



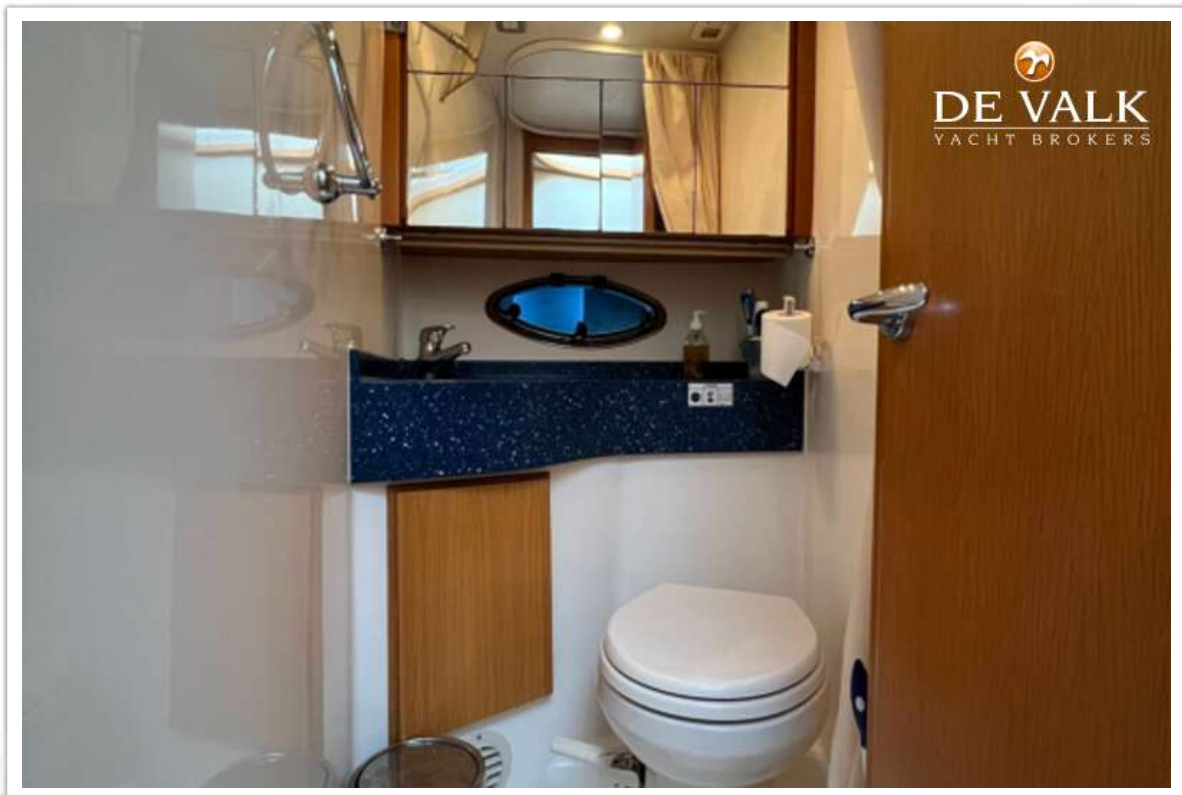
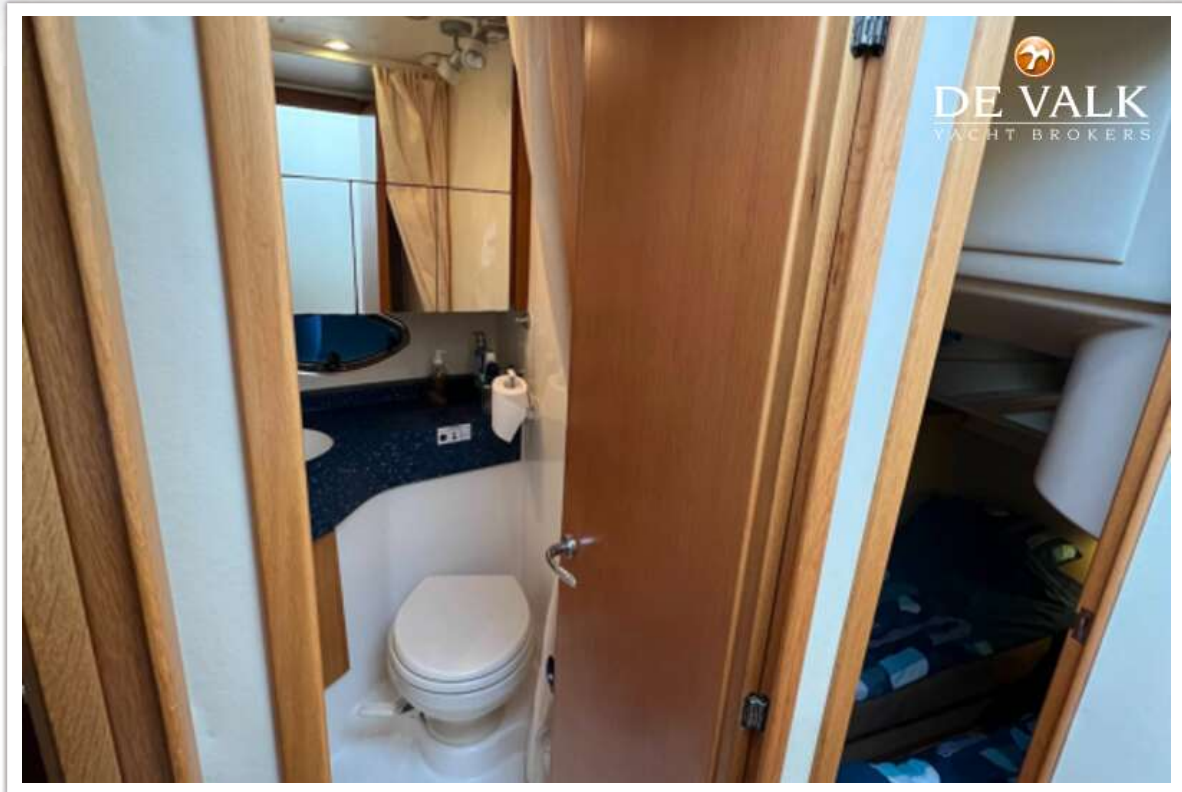
RODMAN 38 FLY



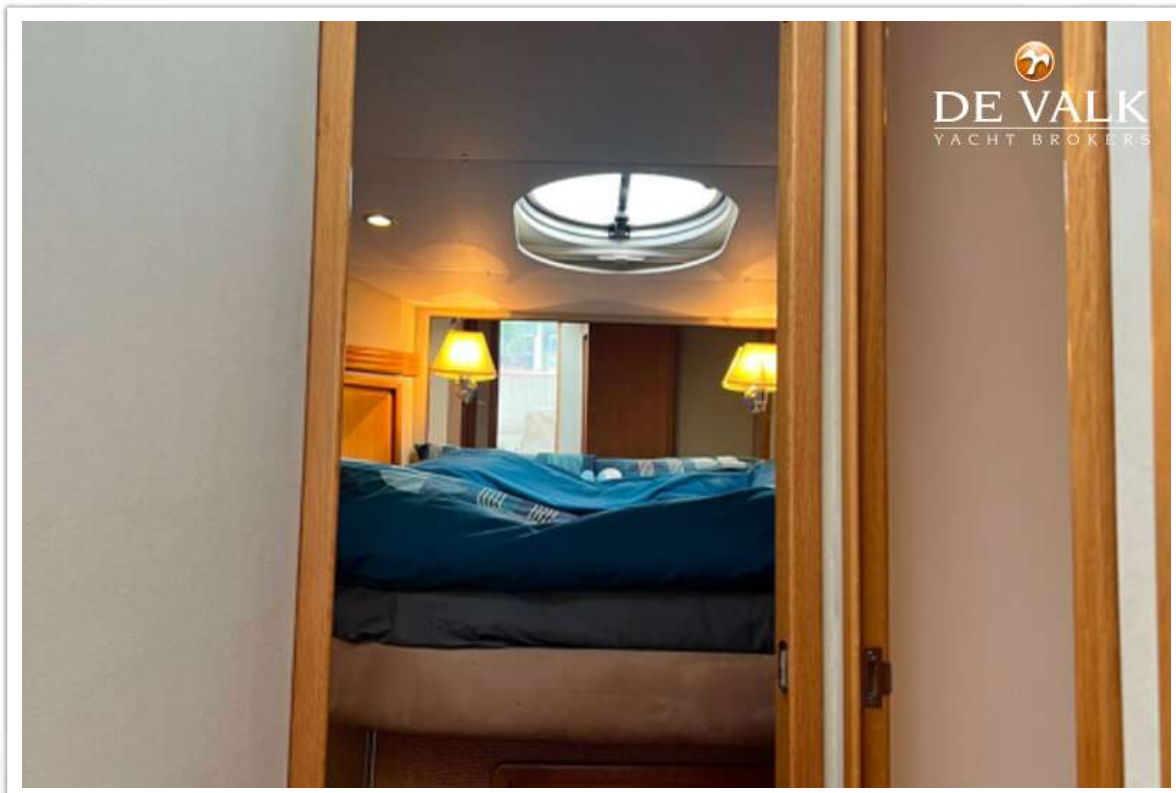
RODMAN 38 FLY



RODMAN 38 FLY



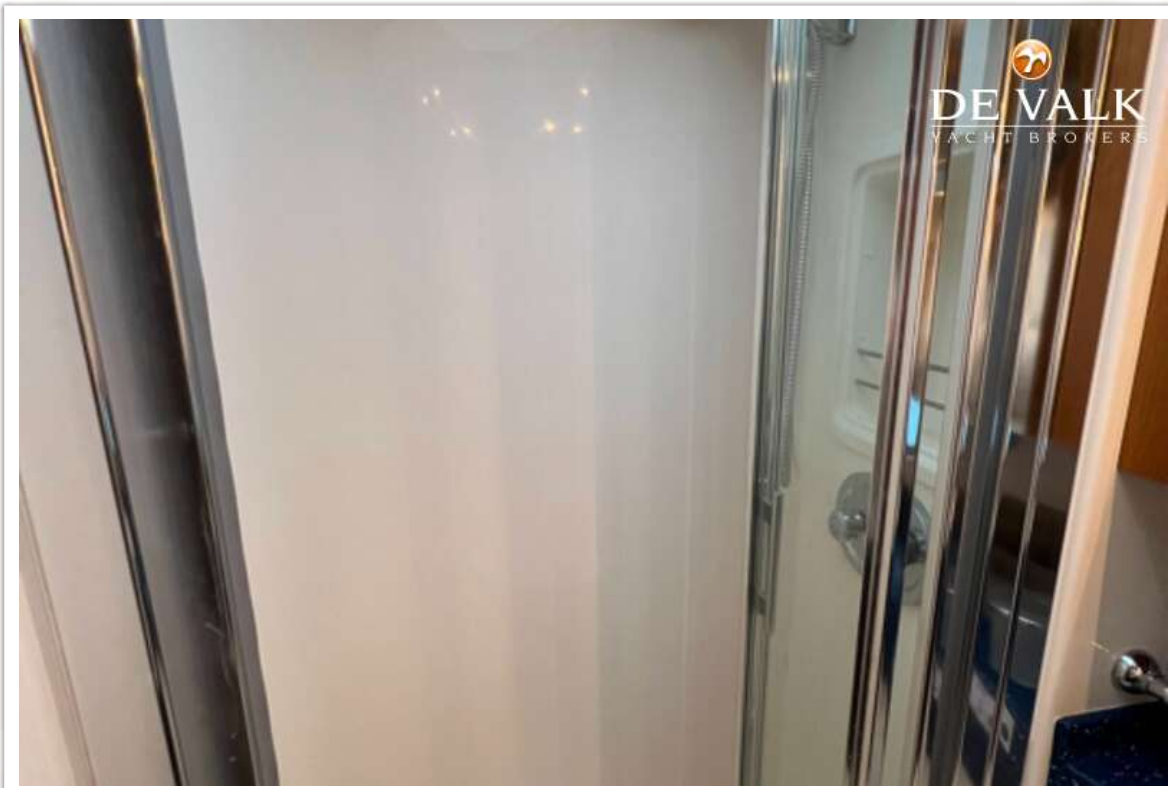
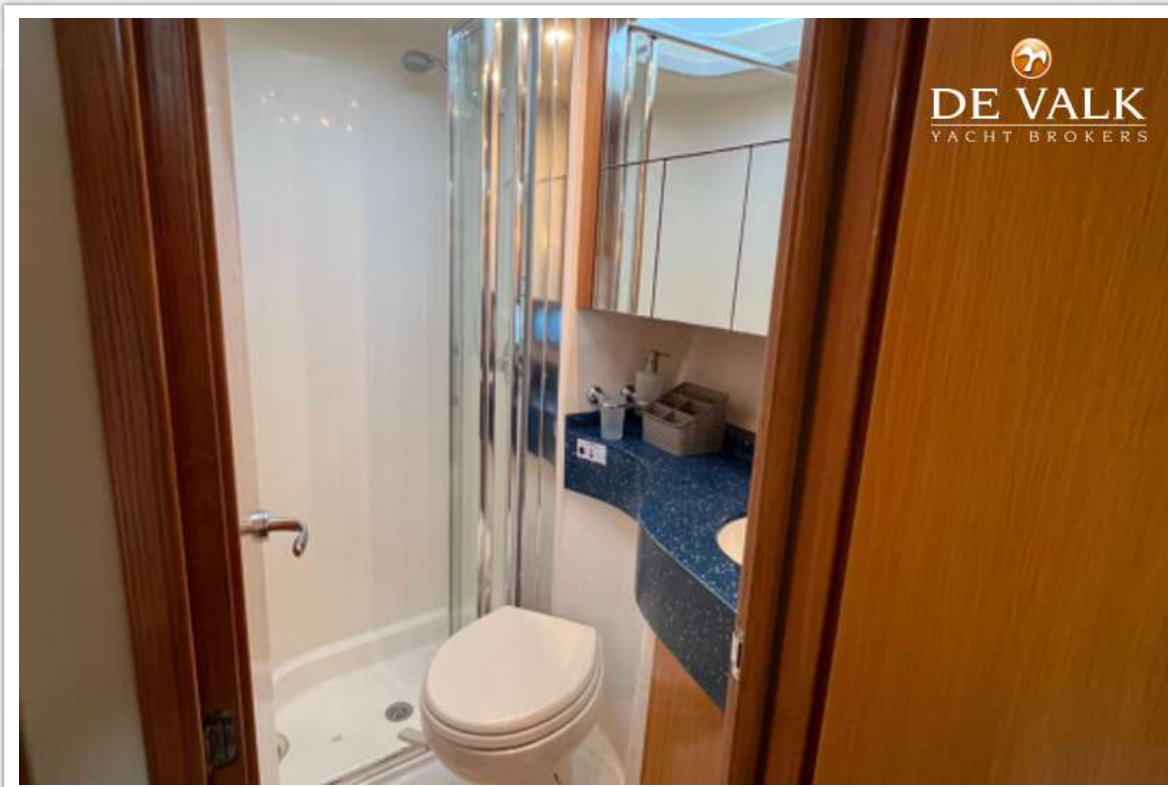
RODMAN 38 FLY



RODMAN 38 FLY



RODMAN 38 FLY



RODMAN 38 FLY



RODMAN 38 FLY

