



DE VALK
YACHT BROKERS



CRANCHI ATLANTIQUE 40



DE VALK
YACHT BROKERS

CRANCHI ATLANTIQUE 40

BROKER'S COMMENTS

This 2007 Cranchi Atlantique 40, newly built by Cranchi in Italy for the current (first) owner, is the ultimate sport cruiser with a classic shape. The 40 is well equipped with a Fischer Panda generator, Webasto heater, reversible air conditioning, trim tabs, etc.. . There is an abundance of space and accommodation on board. Cruising on inland waterways or taking fast sea voyages, the Cranchi 40 can do it all. This Cranchi Atlantique 40 is beautifully maintained and ready for the second owner to start.

Jochem Heijermans

SPECIFICATIONS

Dimensions	13.16 x 3.84 x 1.10 (m)	Builder	Cantiere Nautico Cranchi S.p.A
Built	2007	Cabins	2
Material	GRP	Berths	4
Engine(s)	2 x Volvo Penta D6 EVC diesel	Hp/Kw	2 x 370.00 (hp), 272.32 (kw)
Asking price	€ 177.500 (VAT Paid)	Lying	elsewhere / Not at sales office

CONTACT

Sales office	De Valk Belgium	Telephone	+32 586 80 218
Address	1401 PT Nieuwpoort BE	E-mail	belgium@devalk.nl

DISCLAIMER

These particulars are given in good faith as supplied but cannot be guaranteed.



CRANCHI ATLANTIQUE 40

GENERAL

Model	CRANCHI ATLANTIQUE 40
Type	motor yacht
LOA (m)	13,16
Beam (m)	3,84
Draft (m)	1,10
Air draft (m)	4,05
Headroom (m)	2,00
Year built	2007
Builder	Cantiere Nautico Cranchi S.p.A
Country	Italy
CE norm	B
Hull material	GRP
Hull colour	off-white
Hull shape	deep-V
Superstructure material	GRP
Rubbing strake	aluminum
Deck material	GRP
Deck finish	non-skid moulded in
Superstructure deck finish	non-skid moulded in
Cockpit deck finish	teak
Antifouling (year)	2023
Window frame	aluminium
Window material	tempered glass
Deckhatch	yes
Portholes	aluminium
Flybridge	yes
Flybridge cover	For seats
Radar arch	yes
Mast can be lowered	yes
Fuel tank (litre)	aluminium 1052



Freshwater tank (litre)	polyethylene 350
Level indicator (freshwater)	yes
Blackwater tank (litre)	yes
Level indicator (blackwater)	yes
Blackwater tank extraction	deck extraction + pump
Wheel steering	hydraulic
Flybridge helm position	hydraulic
Extra info	First owner

ACCOMMODATION

Cabins	2
Berths	4
Interior	cherry
Floor	carpet
Saloon	yes
Headroom saloon (m)	2
Heating	diesel ducted hot air
Air-conditioning	reverse cycle airco
Sliding door to cockpit	yes
Galley	yes
Countertop	plastic
Sink	stainless steel
Cooker	ceramic
Microwave/oven combi	LG
Fridge	2x interior + 1 flybridge
Hot water system	220V + engine
Water pressure system	electrical
Owners cabin	French bed
Wardrobe	hanging/drawers/shelves
Bathroom	en suite
Toilet	en suite



Toilet system	electric
Wash basin	in the bathroom
Shower	en suite
Guest cabin 1	twin single
Wardrobe	hanging and drawers
Bathroom	en suite
Toilet	en suite
Toilet system	electric
Wash basin	in the bathroom
Shower	en suite
Flybridge	yes
Wet bar	yes

MACHINERY

No of engines	2
Make	Volvo Penta
Type	D6 EVC
HP	370
kW	272.32
Fuel	diesel
Year installed	2007
Maximum speed (kn)	28
Cruising speed (kn)	20
Engine hours	825
Drive	shaft
Engine controls	electrical
Gearbox	hydraulic
Bowthruster	electric Volvo Penta 4kw (remote control)
Sternthruster	electric Volvo Penta 4kw (remote control)
Exhaust	watercooled
Propeller type	fixed



Propeller blades	4
Propeller shaft material	stainless steel
Shaft lubrication	water
Electric bilge pump	yes
Generator	Fisher Panda 4,5Kva
Batteries	yes
Start battery	(2020)
Service battery	(2020)
Generator battery	yes
Battery monitor	yes
Battery charger	Mastervolt (2019)
Inverter	For tv
Shorepower	with cable
Trimtabs	yes

NAVIGATION

Compass	yes
Compass on flybridge	yes
Electric compass	Raymarine Smart Pilot St 6002
Depth sounder/log	Raymarine
Repeater	Chartplotter, autopilot, depth sounder on flybridge
VHF	Raymarine
Autopilot	Raymarine Smart Pilot St 6002
Rudder angle indicator	Raymarine Smart Pilot St 6002
Radar/GPS/plotter	Raymarine C80
AIS transceiver	(2023)
Navigation lights	yes
Searchlight	yes

EQUIPMENT

Cockpit cover	yes
---------------	-----



CRANCHI ATLANTIQUE 40

Cockpit chairs	yes
Bathing platform	New teak
Boarding ladder	stainless steel
Deck shower	yes
Windlass	electrical Remote control
Sea railing	stainless steel
Grab rail (superstructure)	stainless steel
Pushpit	yes
Pulpit	yes
Wiper	yes
Horn	yes
Fenders	yes
Mooring lines	yes
TV	yes
TracVision ball	(needs to be serviced)
Radio	yes
Cockpit speakers	yes
Speakers in salon	yes
Fire extinguisher	yes



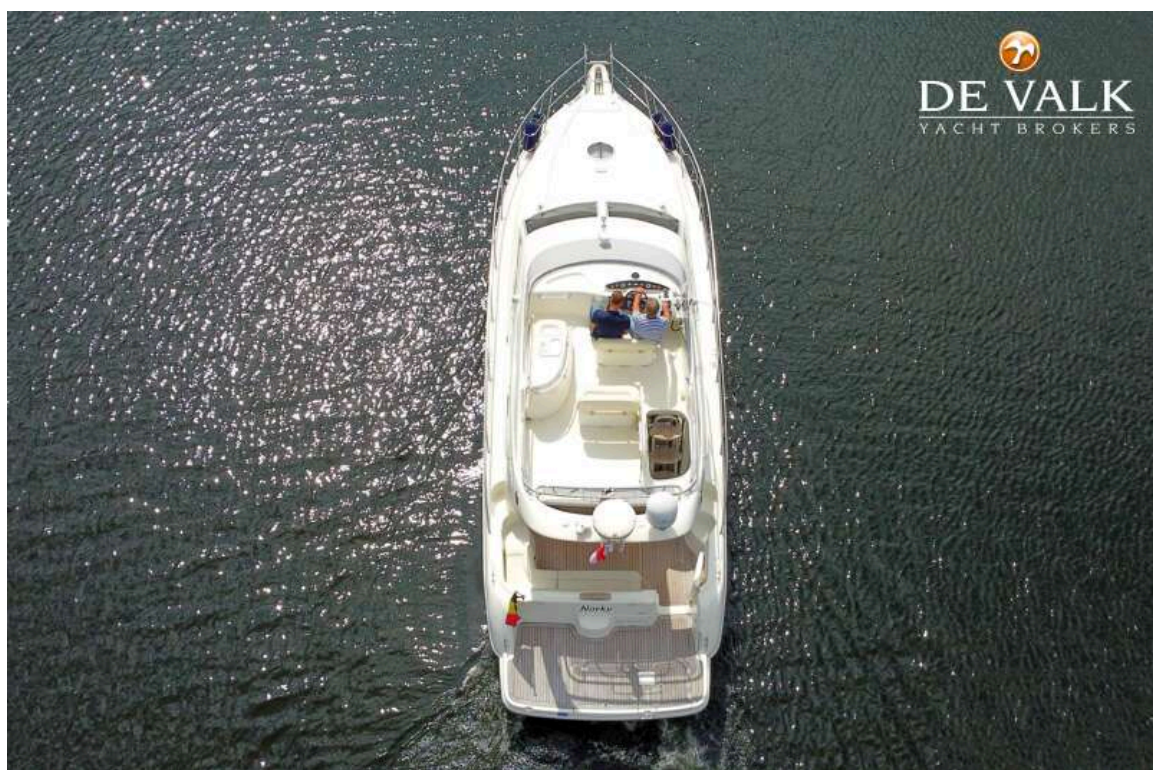
CRANCHI ATLANTIQUE 40



CRANCHI ATLANTIQUE 40



CRANCHI ATLANTIQUE 40



CRANCHI ATLANTIQUE 40



CRANCHI ATLANTIQUE 40





CRANCHI ATLANTIQUE 40



CRANCHI ATLANTIQUE 40



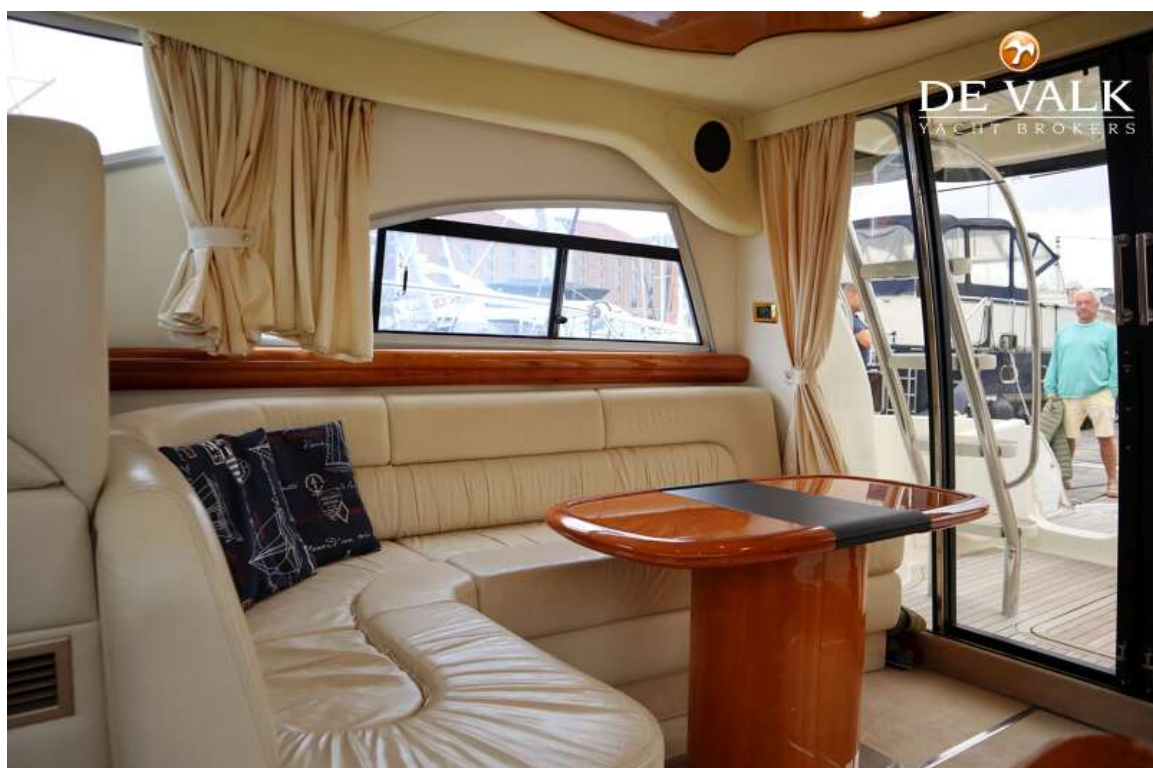
CRANCHI ATLANTIQUE 40



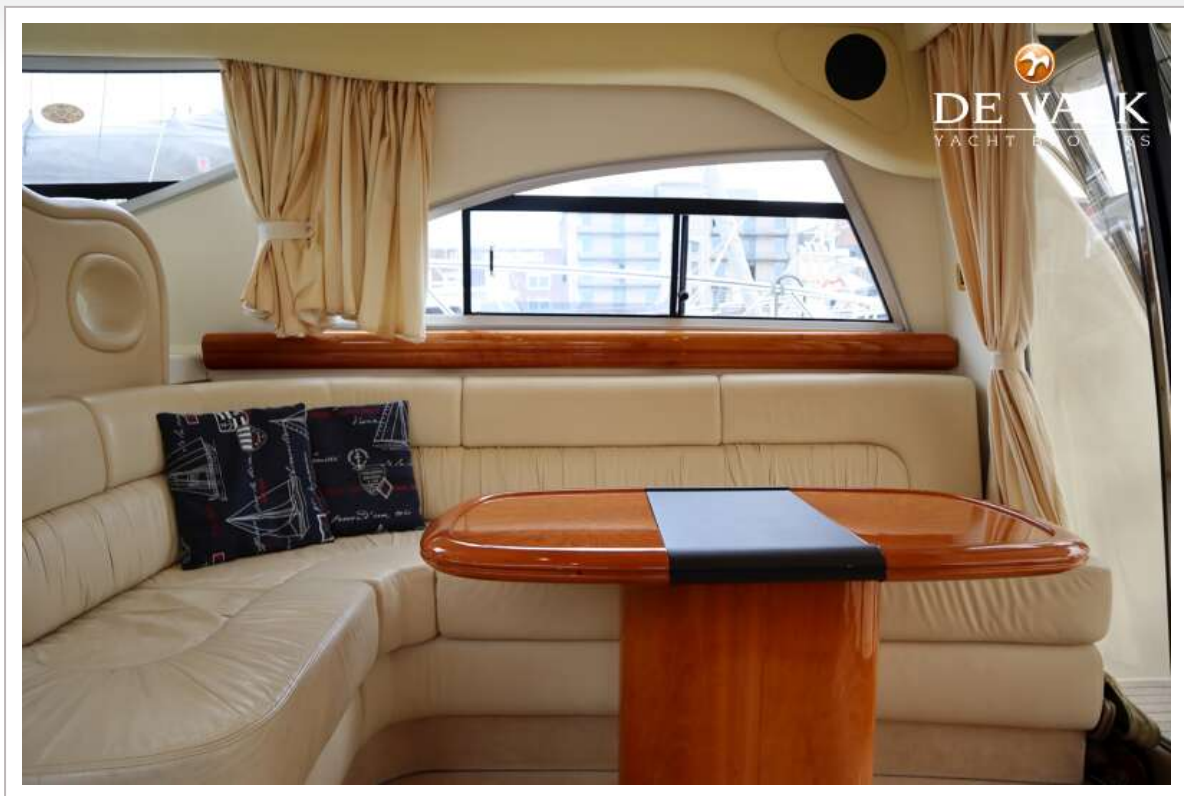
CRANCHI ATLANTIQUE 40



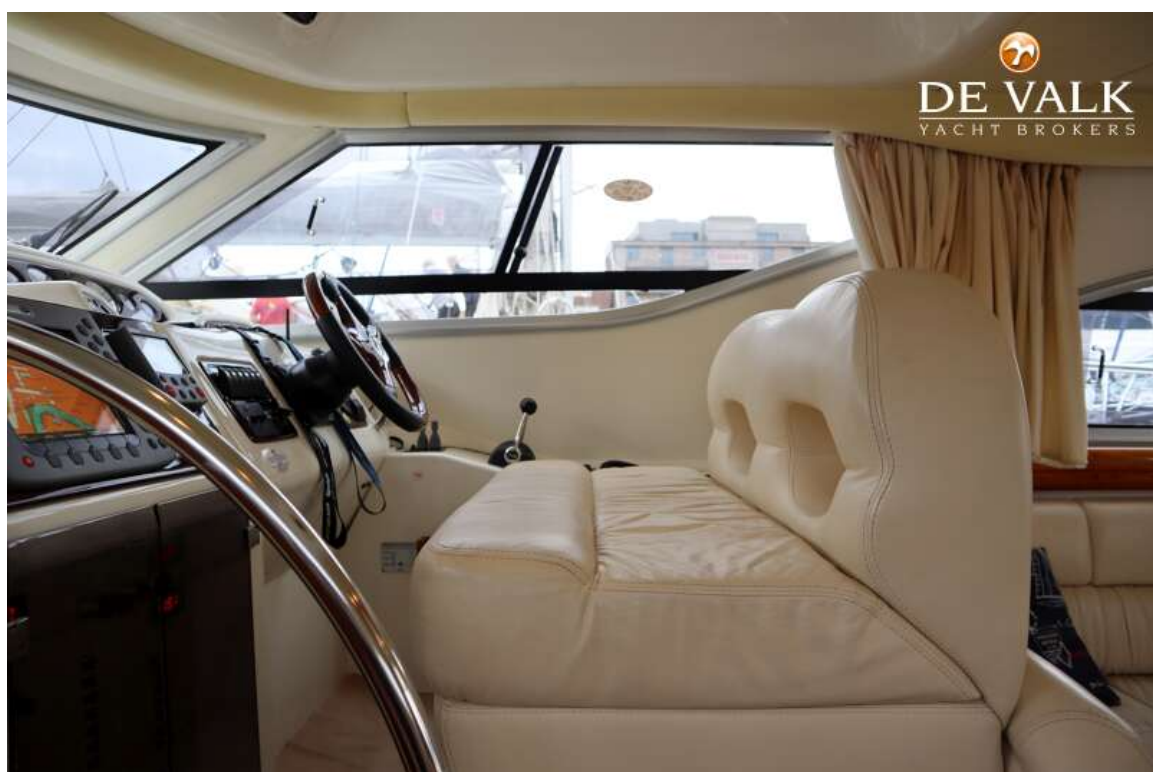
CRANCHI ATLANTIQUE 40



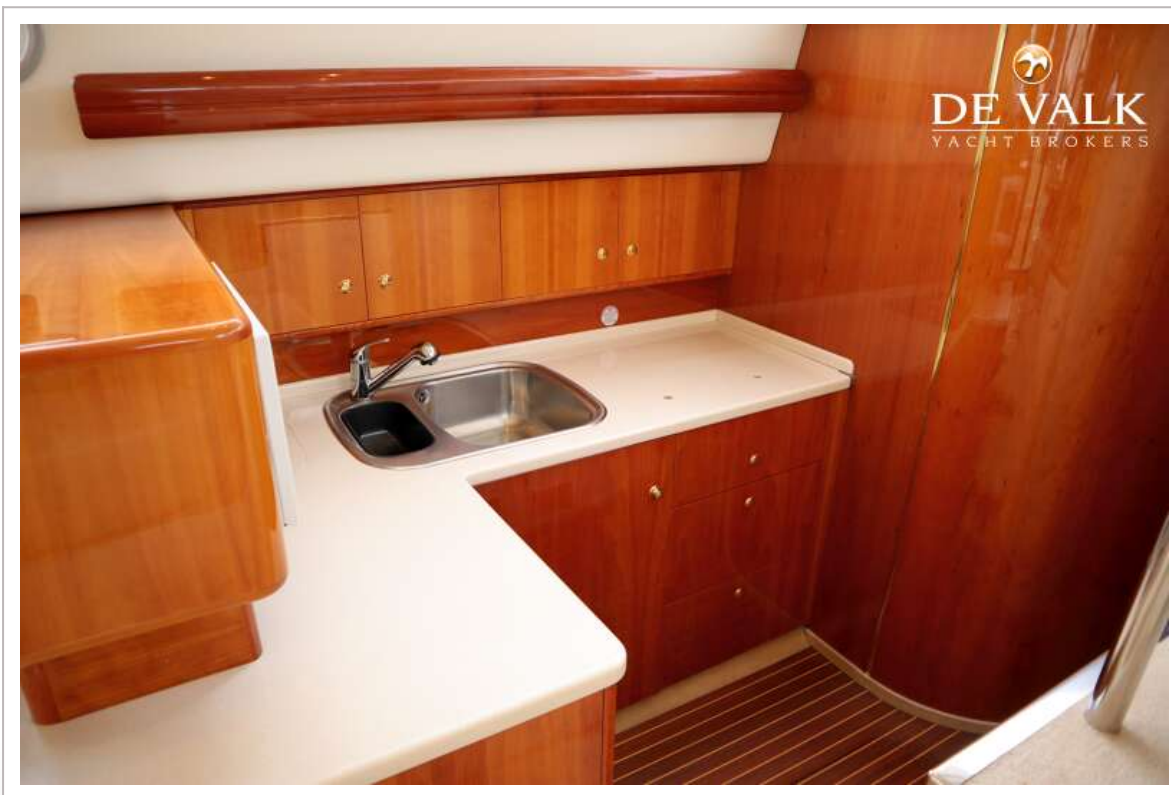
CRANCHI ATLANTIQUE 40



CRANCHI ATLANTIQUE 40



CRANCHI ATLANTIQUE 40



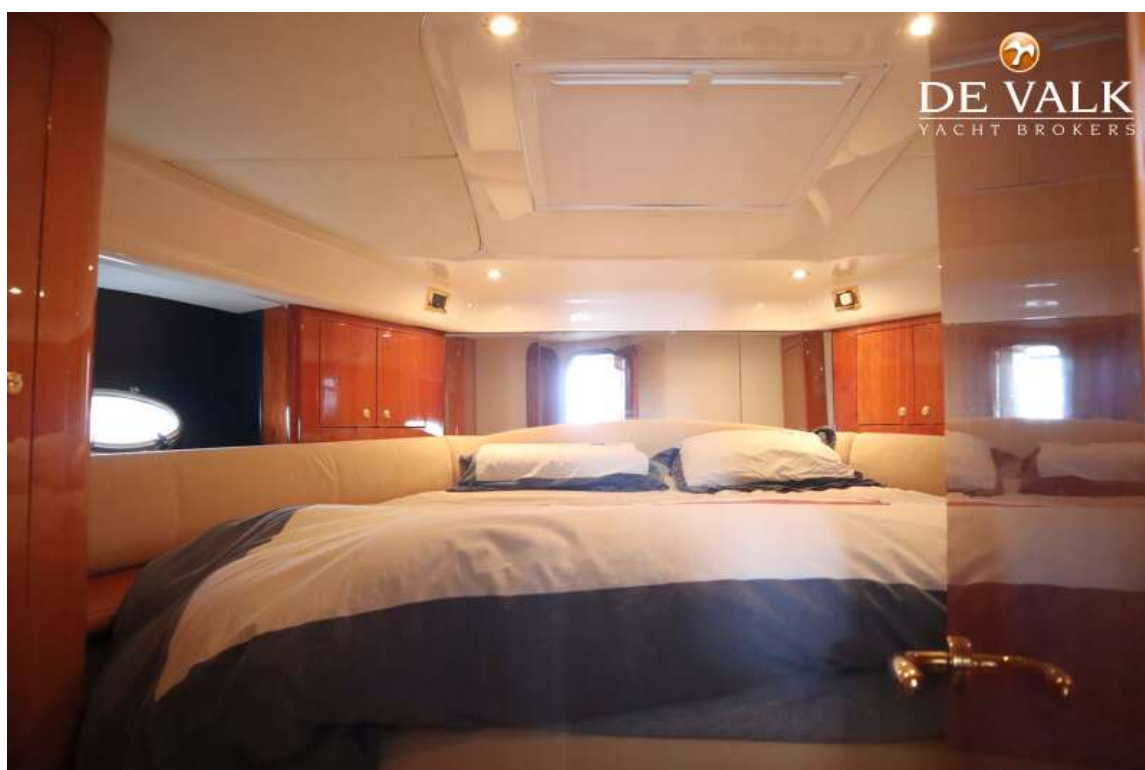
CRANCHI ATLANTIQUE 40



CRANCHI ATLANTIQUE 40



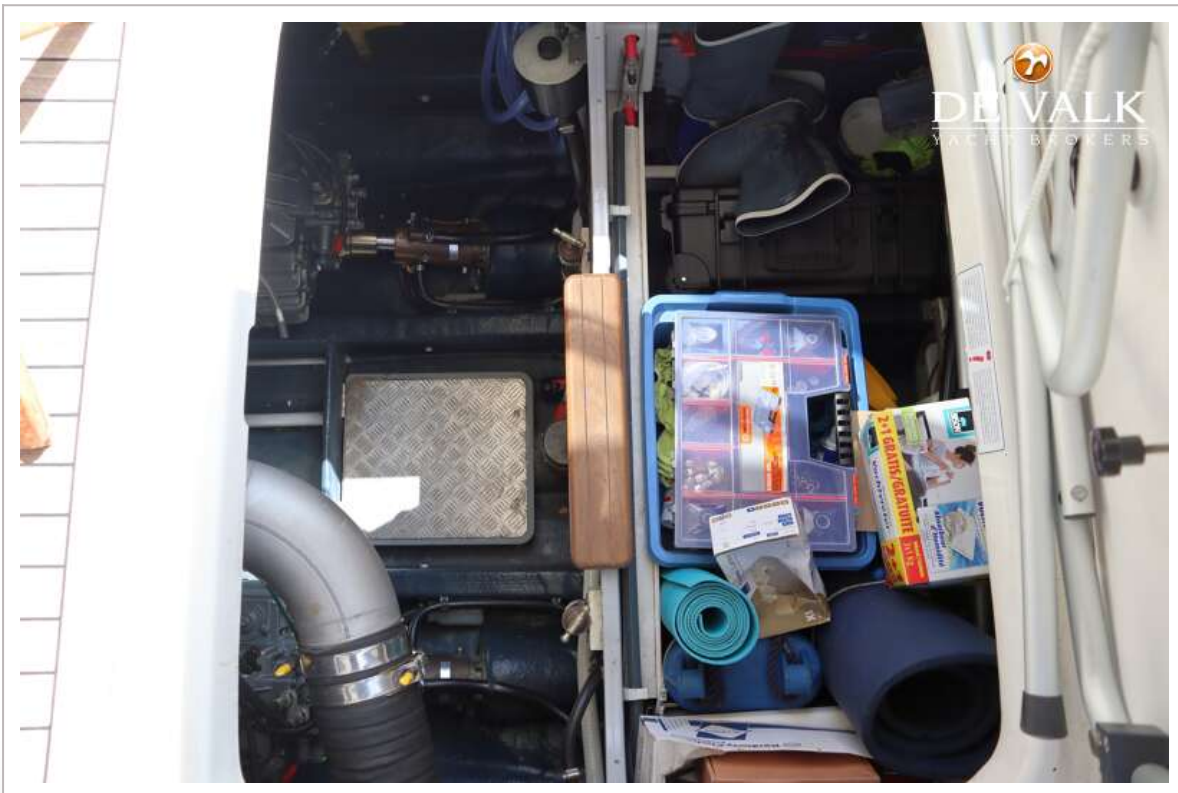
CRANCHI ATLANTIQUE 40



CRANCHI ATLANTIQUE 40



CRANCHI ATLANTIQUE 40



CRANCHI ATLANTIQUE 40



CRANCHI ATLANTIQUE 40

