



## BENETEAU FLYER 12 CABIN



**DE VALK**  
YACHT BROKERS

# BENETEAU FLYER 12 CABIN

## BROKER'S COMMENTS

This beautiful Beneteau Flyer Cabin is very complete equipped, s.a.; twin shaft Volvo Penta engines, bowthruster, new (2023) sterntruster, new (2024) trimflaps, new (2024) Garmin chart plotter & radar & autopilot & VHF & depht/log/wind, generator, airconditioning, electric opening roof, heater, grill in the cockpit and equipped with teak on the outside. The boat is known about her great stability, excellent passage through waves, tight turns even at high speed, gradual acceleration, excellent manoeuvrability and the helmsman has excellent visibility over the boat. She can be visited anytime.

*Jan-Ward van Dantzig*

## SPECIFICATIONS

<b>Dimensions</b>	12.62 x 3.99 x 1.16 (m)	<b>Builder</b>	Beneteau
<b>Built</b>	2006	<b>Cabins</b>	2
<b>Material</b>	GRP	<b>Berths</b>	4
<b>Engine(s)</b>	2 x Volvo Penta D6-370I-B HS diesel	<b>Hp/Kw</b>	2 x 370.00 (hp), 272.32 (kw)
<b>Asking price</b>	sold (VAT )	<b>Lying</b>	at sales office

## CONTACT

<b>Sales office</b>	De Valk Sint Annaland B.V.	<b>Telephone</b>	+31 (0)166 601 000
<b>Address</b>	Koelhuisweg 4 4697 RM Sint Annaland NL	<b>E-mail</b>	sintannaland@devalk.nl

## DISCLAIMER

These particulars are given in good faith as supplied but cannot be guaranteed.



# BENETEAU FLYER 12 CABIN

## GENERAL

Model	BENETEAU FLYER 12 CABIN
Type	motor yacht
LOA (m)	12,62
LWL (m)	11,96
Beam (m)	3,99
Draft (m)	1,16
Air draft (m)	4,59
Headroom (m)	2,00
Year built	2006
Builder	Beneteau
Country	France
Designer	André Beneteau & Patrice Sarrazin
Displacement (t)	9,24
CE norm	B
Hull material	GRP
Hull colour	red And white
Hull shape	deep-V
Superstructure material	GRP
Rubbing strake	stainless steel New in 2016
Deck material	GRP
Deck finish	teak
Superstructure deck finish	non-skid moulded in
Cockpit deck finish	teak
Antifouling (year)	March 2024
Window frame	stainless steel
Window material	polycarbonate
Deckhatch	Lewmar with rollo
Portholes	stainless steel
Mast can be lowered	hydraulic (New in 2016)
Fuel tank (litre)	aluminium 2 x 600



# BENETEAU FLYER 12 CABIN

Level indicator (fuel tank)	yes
Freshwater tank (litre)	polyethylene 320
Level indicator (freshwater)	yes
Blackwater tank (litre)	polyethylene 80
Blackwater tank extraction	deck extraction + uw line
Greywater tank (litre)	polyethylene 220
Wheel steering	hydraulic
More info on paintwork	The red parts on the hull were painted in 2017
Extra info	Exterior has been professional polished in March 2024
Extra info	The windscreen and the sliding side windows are in tinted glass.

## ACCOMMODATION

Cabins	2
Berths	4
Interior	Pear-coloured Mukali - High gloss varnish finished
Floor	teak On the floor in the saloon (same as in the cockpit)
Deck saloon	Headroom in cockpit at entrance : 2,07 m
Saloon	With 360° panoramic view & carefully thought out ventilation
Headroom saloon (m)	2,02
Sliding roof	electric Transparent opening roof
Heating	diesel ducted hot air New in 2021 : Webasto Air Top EVO 55
Air-conditioning	single cycle airco Rivacold - Vitrifrigo - 2400 BTU
Dinette to convert into berth	The saloon table is extendable and also (New in 2016) height adjustable (for meals, cocktails, sleeping or lounge sofa)
Sliding door to cockpit	The glass sliding door consists of 2 panels with stainless steel
Galley	Headroom 2,02 m
Countertop	wood (Pear-coloured Mukali)
Sink	stainless steel 1 x
Cooker	ceramic 2-ring De Dietrich glass hotplate
Microwave	Sharp R-25ST
Fridge	New in 2021 : Front loader - Indel 33 (85 Liter)



# BENETEAU FLYER 12 CABIN

Freezer	Small freezer compartment in the fridge
Hot water system	220V + engine 25 Liter Quick Boiler
Water pressure system	electrical New water pump in 2024
Crockery	Beneteau
Owners cabin	double bed In front cabin - Headroom 1,90 m
Bed length (m)	2,10 x 1,70
Wardrobe	hanging/drawers/shelves
Bathroom	en suite Headroom 1,90 m
Toilet	en suite
Toilet system	electric Jabsco
Wash basin	in the bathroom Glass washbasin with designer mixer tap
Shower	en suite Separate shower - Headroom 1,95 m
Extra info	Marine mattresses
Guest cabin 1	double bed Headroom 2,00 m
Bed length (m)	2,00 x 1,55 m
Wardrobe	hanging and shelves
Bathroom	en suite Headroom 1,80 - 1,88 m
Toilet	en suite
Toilet system	manual Jabsco
Wash basin	in the bathroom Glass wash basin with designer mixer tap
Shower	en suite
Extra info	Marine mattresses
Extra info	Carefully thought out ventilation in the heads compartments & cabins (always at least 2 openings in each). Plenty of stowage space with optimised accessibility. New in 2021 : Electric grill-plate in the cockpit & Natural Blanc External Curtains.
Extra info	New in 2016 : Carpet and Cushions.

## MACHINERY

No of engines	2
Make	Volvo Penta
Type	D6-370I-B HS



# BENETEAU FLYER 12 CABIN

HP	370
kW	272.32
Fuel	diesel
Year installed	2006
Maximum speed (kn)	30
Cruising speed (kn)	16
Engine hours	1220
Engine cooling system	freshwater heat exchanger 2 x New in October 2023
Drive	shaft
Shaft seal	2 x New in September 2023
Engine controls	electrical
Gearbox	hydraulic
Bowthruster	electric MaxPower Duo (with 2 x 3 blade propeller)
Sternthruster	electric New in 2023 : Sleipner Side Power (with 2 x 5 blade propeller)
Exhaust	watercooled
Propeller type	fixed 2 x
Propeller blades	4
Propeller shaft material	stainless steel
Shaft lubrication	water
Manual bilge pump	yes
Electric bilge pump	New in October 2023 : Sahara 500
Electrical installation	12 & 24 & 220 Volt
Generator	silent separator Onan
Start battery	1x 140 Ah (New in October 2023) Dynac SHD Pro & 1 x 145 Ah Varta
Service battery	New in October 2023 : 2 x 140 Ah Dynac DC AGM
Generator battery	New in 2024 : 1 x 80 Ah Dynac AGM
Bowthruster battery	New in 2017 : 2 x 50 Ah Optima Redtop
Sternthruster battery	New in 2023 : 1 x Ah ??
Battery monitor	yes



# BENETEAU FLYER 12 CABIN

Battery charger	1 x CTrek Multi XS 7000 (New in 2024) & 1 x Victron Blue Smart 12V10A (New in 2017 - for bow truster batteries)
Battery charger/inverter	New in 2016 : Mastervolt Mass Combi 12V/100A/2200Watt
Diode battery combiners	yes
Shorepower	with cable
Trimtabs	New in 2024 : ZipWake Dynamic Trim Control System Series S
Extra info	Engines completely checked & serviced in September 2023 by Volvo
Extra info	New in October 2023 : 2 x Oil-cooler & water in fuel sensors
Extra info	Hydronautica RMC remote controle (engines, bow & sterntruster)

## NAVIGATION

Compass	Plastimo Offshore 90
Depth sounder/log	New in 2024 : Garmin GHC 20
Windset	New in 2024 : Garmin
VHF	New in 2024 : Garmin GHS1 1i with a new Garmin speaker
Autopilot	New in 2024 : Garmin
Rudder angle indicator	Via autopilot
Radar/GPS/plotter	New in 2024 : Garmin GPSMap 12' screen & GMR 18HD3 radar antenna
Navigation lights	yes
Searchlight	New in 2016
Extra info	Glomex Antenna

## EQUIPMENT

Fixed hardtop	With a transparent electric opening roof
Cockpit cover	New in 2023 : Grey
Cockpit cushions	White, also for sun deck
Bathing platform	Large bathing platform provided with teak
Boarding ladder	stainless steel Electric
Transom door	Gate with safety flaps & strengthened hinges allows easy access





# BENETEAU FLYER 12 CABIN

<b>Gangway</b>	Hydraulic Opacmare with a remote controle
<b>Deck shower</b>	Hot and cold pressurised water
<b>Anchor</b>	Bruce Stainless steel
<b>Anchor chain</b>	Stainless steel swiffel & galvanised chain
<b>Chain counter</b>	Quick
<b>Windlass</b>	electrical Lewmar 1.000 Watt
<b>Deck wash</b>	Salt water washing pump
<b>Sea railing</b>	stainless steel Railing with a stainless steel wire underneath
<b>Grab rail (superstructure)</b>	stainless steel
<b>Pulpit</b>	All-round & stainless steel pulpit
<b>Rope cutter</b>	New in 2016 : 2 x
<b>Wiper</b>	2 x windscreen wiper with built-in washer and demister
<b>Window heating</b>	Via Webasto heating system
<b>Horn</b>	electric
<b>Fenders</b>	yes
<b>Mooring lines</b>	yes
<b>TV</b>	New in 2023 : Samsung LED
<b>Radio</b>	New in October 2023 : Fusion Apollo 670, 3 Zone, DSP
<b>Cockpit speakers</b>	New in 2021 : 2 x Sony BLC waterproof
<b>Speakers in salon</b>	2 x
<b>Clock - barometer</b>	yes
<b>Fire extinguisher</b>	4 x
<b>Latest extinguisher survey</b>	Need to be checked/renewed
<b>Extra info</b>	2 x Stainless steel fender basket (to store fenders). Stainless steel protection strip mounted on the bow in 2016.
<b>Extra info</b>	Sunbathing platform forward on the superscruction
<b>Extra info</b>	Cockpit bench seat is convertible to double sunbathing platform





# BENETEAU FLYER 12 CABIN





# BENETEAU FLYER 12 CABIN





# BENETEAU FLYER 12 CABIN





## BENETEAU FLYER 12 CABIN





# BENETEAU FLYER 12 CABIN





# BENETEAU FLYER 12 CABIN





## BENETEAU FLYER 12 CABIN



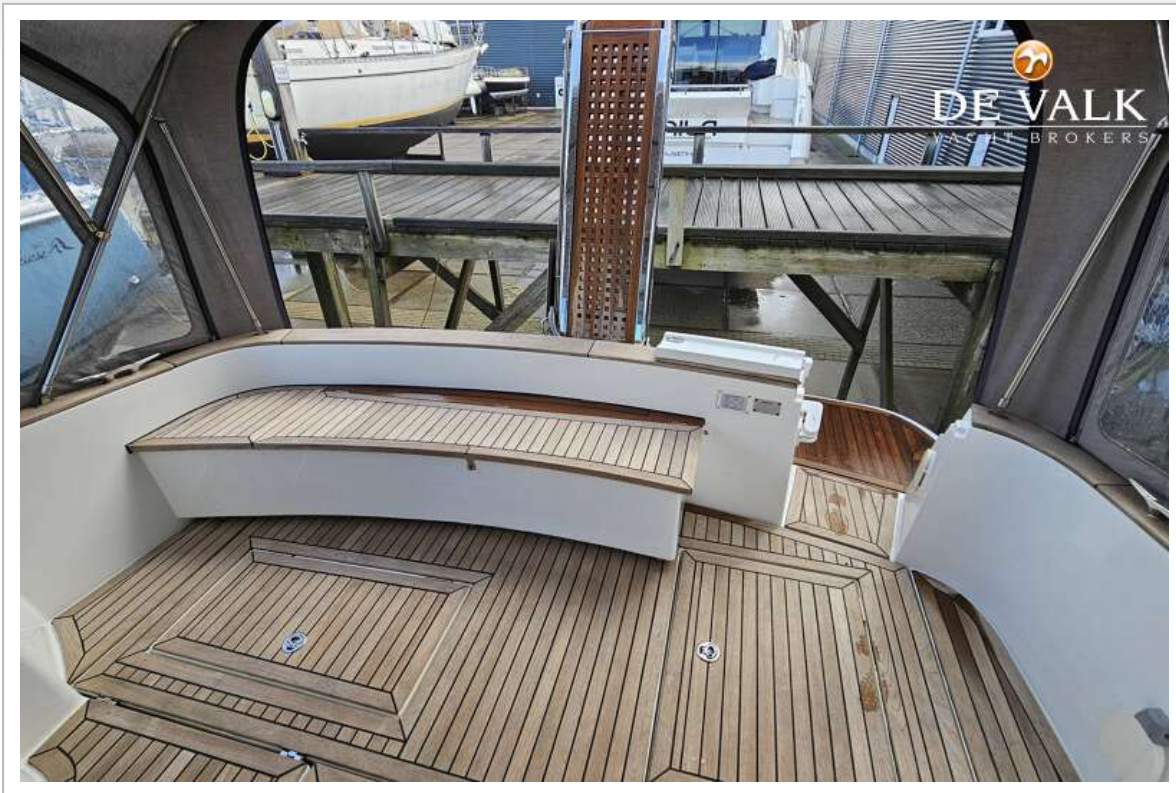


## BENETEAU FLYER 12 CABIN





## BENETEAU FLYER 12 CABIN





## BENETEAU FLYER 12 CABIN



# BENETEAU FLYER 12 CABIN





## BENETEAU FLYER 12 CABIN



## BENETEAU FLYER 12 CABIN





## BENETEAU FLYER 12 CABIN





# BENETEAU FLYER 12 CABIN



# BENETEAU FLYER 12 CABIN

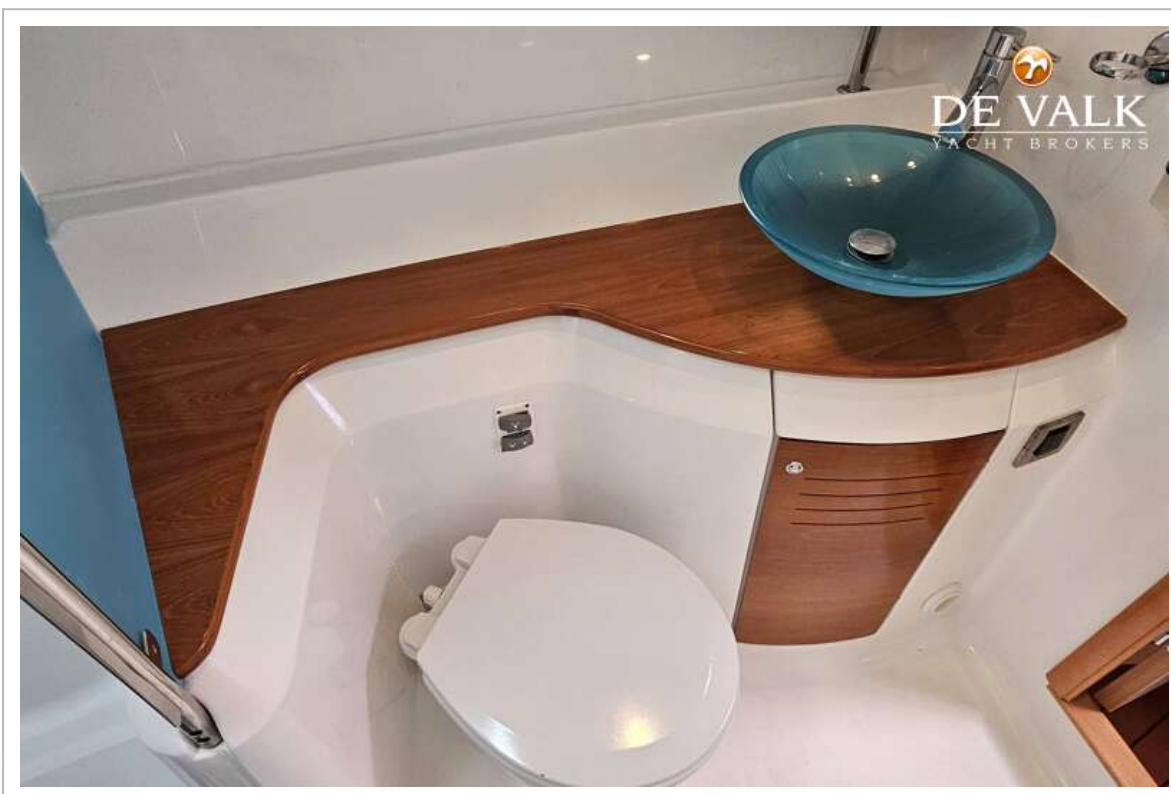
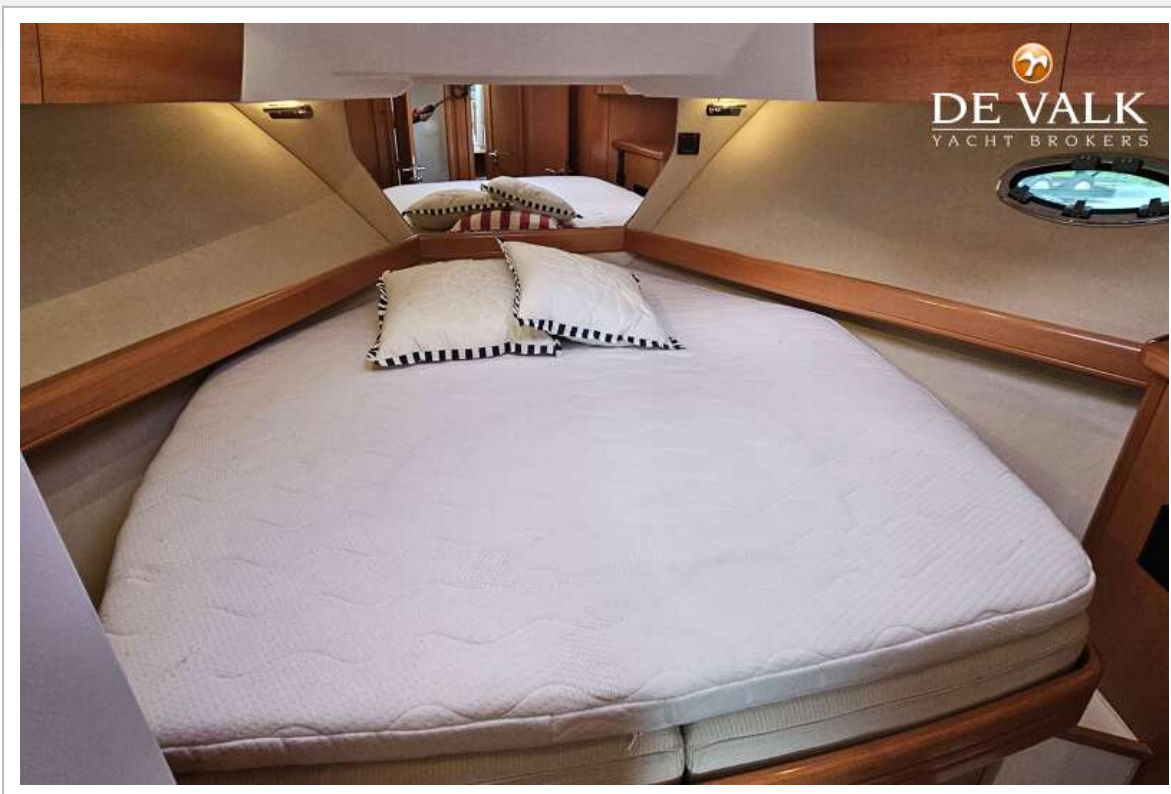




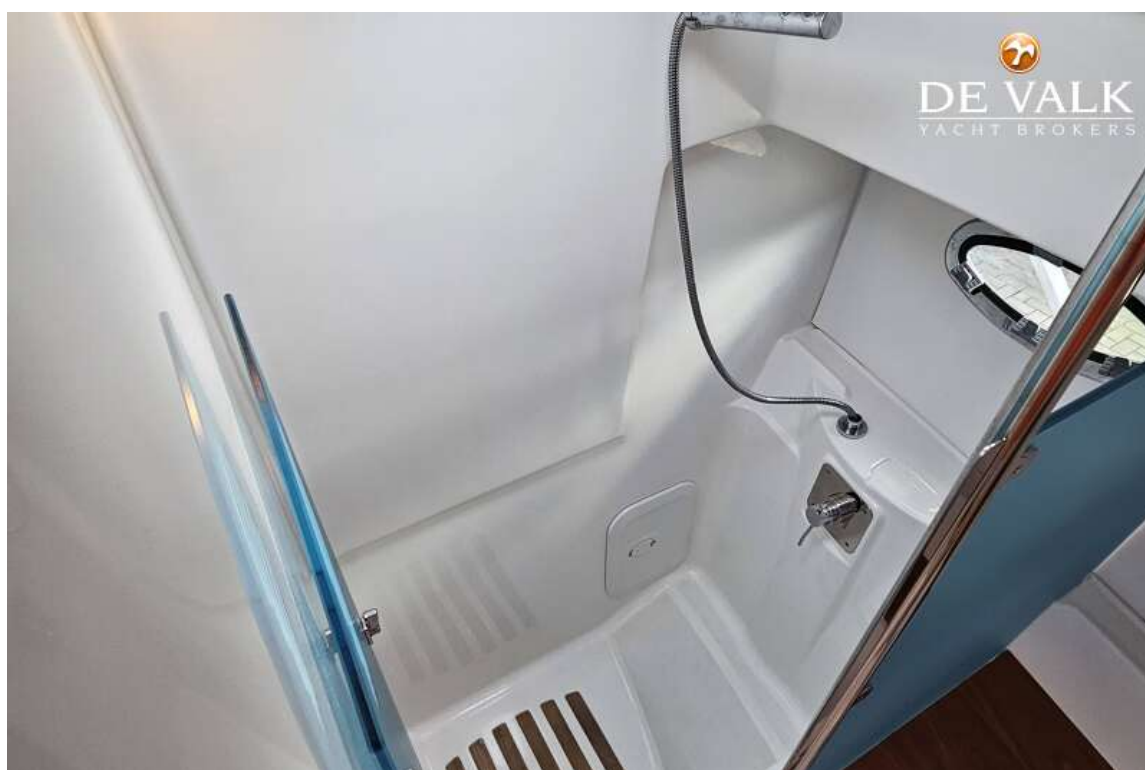
## BENETEAU FLYER 12 CABIN



## BENETEAU FLYER 12 CABIN

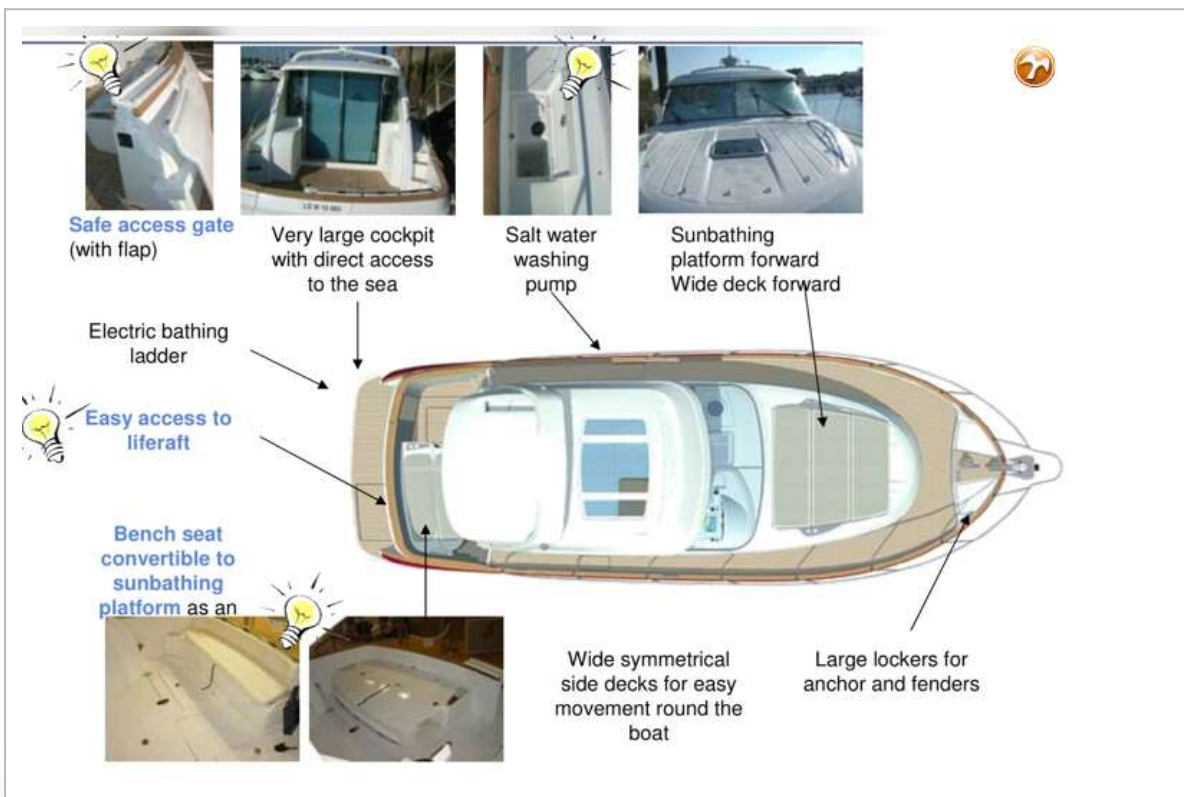


# BENETEAU FLYER 12 CABIN

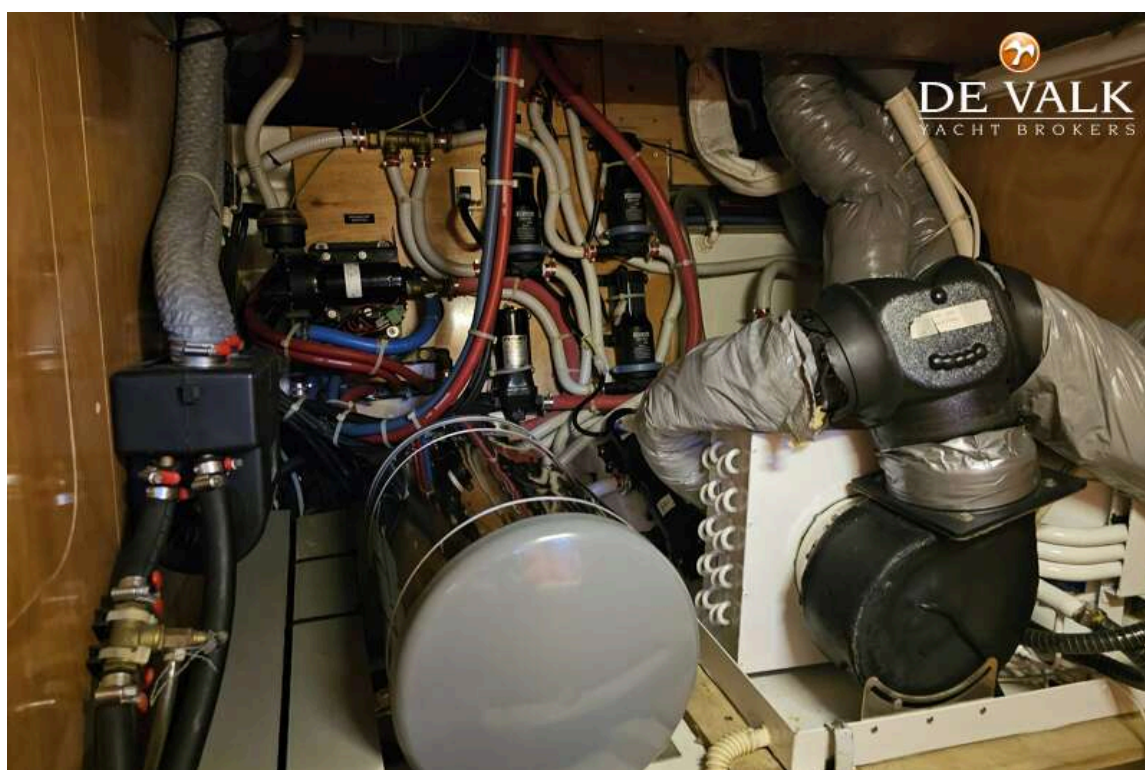




# BENETEAU FLYER 12 CABIN



## BENETEAU FLYER 12 CABIN





# BENETEAU FLYER 12 CABIN

