



## DOGGERSBANK 66

## BROKER'S COMMENTS

In close cooperation with the famous Shipyard Altena Marine/Netherlands, we offer an almost new Vripack designed Doggersbank 66, delivered to the present (first) owner in 2022. Vivat is built for a high committed skipper who is known as maritime innovator and owner of multiple offshore supply vessels. Every inch shows experience to that detail; materials & equipment meet the highest reliability standard. The owner did a trip to North Norway and last season the passage to Spain. This economical "go-anywhere-in-the-world" trawler is in excellent condition. Benefit direct an "as new" delivery.

*Willem Koopmans*

## SPECIFICATIONS

<b>Dimensions</b>	20.55 x 5.65 x 1.75 (m)	<b>Builder</b>	Altena Yachting B.V.
<b>Built</b>	2022	<b>Cabins</b>	3
<b>Material</b>	Steel	<b>Berths</b>	6
<b>Engine(s)</b>	2 x John Deere 6068SFM85 M1 diesel	<b>Hp/Kw</b>	2 x 250.00 (hp), 184.00 (kw)
<b>Asking price</b>	sold (VAT )	<b>Lying</b>	contact sales office

## CONTACT

<b>Sales office</b>	De Valk Costa Blanca	<b>Telephone</b>	+34 96 50 21 569
<b>Address</b>	Costa Blanca Region 03730 Javea Alicante ES	<b>E-mail</b>	costablanca@devalk.nl

## DISCLAIMER

These particulars are given in good faith as supplied but cannot be guaranteed.



## GENERAL

Model	DOGGERSBANK 66
Type	motor yacht
LOA (m)	20,55
LWL (m)	18,28
Beam (m)	5,65
Draft (m)	1,75
Air draft (m)	9,50
Air draft min (m)	5,25
Headroom (m)	2,00
Year built	2022
Launched	2022
Builder	Altena Yachting B.V.
Country	The Netherlands
Designer	Vripack
Displacement (t)	80
Gross tonnage	74
Net tonnage	22
CE norm	A
Hull material	steel
Hull colour	beige
Hull shape	round-bilged
Keel type	box keel
Superstructure material	aluminium Colour white
Rubbing strake	stainless steel
Deck material	steel
Deck finish	synthetic teak Flexi teak
Superstructure deck finish	synthetic teak Flexi teak
Cockpit deck finish	synthetic teak Flexi teak
Antifouling (year)	March 2024
Dorades	yes



Window frame	yes
Window material	double glazing 3 mid windows in wheelhouse electrical heated
Deckhatch	yes
Portholes	yes
Insulation	Foam. isolated to minus 20" Celsius
Flybridge	With mini outdoor kitchen and fridge
Flybridge cockpit cover	Over instruments
Flybridge suncover	yes
Radar arch	yes
Fuel tank (litre)	steel 9.000; 4x tank
Fuel tank 2 (litre)	yes
Level indicator (fuel tank)	yes
Fuel daytank (litre)	400 ltr. day tank with CIC fuel polisher
Freshwater tank (litre)	polyethylene 2000
Level indicator (freshwater)	yes
Blackwater tank (litre)	polyethylene 1000
Level indicator (blackwater)	yes
Blackwater tank extraction	deck extraction + pump
Greywater tank (litre)	yes
Wheel steering	yes
Inside helm position	Tiller on chair
Flybridge helm position	yes
More info on hull	Hull polished March 2024
More info on paintwork	New anodes March 2024
Extra info	Vessel designed for owner of supply vessels company North sea.
Extra info	Double Racor filters each engine after daytank

## ACCOMMODATION

Cabins	3
Berths	6
Interior	teak Modern dark and creme white



Layout	Owners version
Floor	woodprint Plus carpet
Open cockpit	yes
Aft deck	yes
Pilot house	yes
Saloon	yes
Headroom saloon (m)	2
Heating	central heating Kabola KB40 floor heating and floor radiators
Air-conditioning	reverse cycle airco Webasto V50
Navigation center	yes
Dinette	yes
Opening door to cockpit	yes
Opening door to aft deck	yes
Galley	yes
Countertop	granite Black
Sink	stainless steel Dark coated, 1 plus 0,5 sink
Cooker	induction 4 burner Siemens
Oven	Siemens, plus airfryer
Microwave	Siemens
Fridge	Galley, salon and Fly
Freezer	Galley and one in lazarette
Hot water system	220V or central heating 75 ltr boiler via Kabola
Water pressure system	Double 55 ltr Gianneschi
Dishwasher	Siemens
Kettle	Qooker
Hot water tap	yes
Coffee maker	De Longi beans
Owners cabin	double bed Midships, with tv on lift at foot end
Bed length (m)	2,00 x 1,80 electric adjustable
Wardrobe	hanging/drawers/shelves Walk-in closet
Bathroom	en suite With floorheating and towel radiator
Toilet	en suite



Toilet system	electric Tecma
Wash basin	in the bathroom Double
Shower	en suite Separate cabin
Guest cabin 1	double bed
Bed length (m)	2,0
Wardrobe	hanging/drawers/shelves
Bathroom	shared Entrance from guest cabin
Toilet	shared
Toilet system	electric Tecma
Wash basin	in the bathroom
Shower	shared Separate cabin
Guest cabin 2	twin single
Bed length (m)	2,0
Wardrobe	hanging and shelves
Bathroom	shared
Toilet	shared
Toilet system	electric
Wash basin	in the bathroom
Shower	shared Separate cabin
Washing machine	Siemens Sensoric, 1-8 kg
Dryer	Siemens, Sensoric, 1-8 kg
Flybridge	yes

## MACHINERY

No of engines	2
Make	John Deere
Type	6068SFM85 M1
HP	250
kW	184
Fuel	diesel
Year installed	2022



Year of overhaul	In use since 2022
Maximum speed (kn)	11
Cruising speed (kn)	8
Consumption (l/hr)	25
Range (nm)	3000
Engine hours	1.000
Engine cooling system	freshwater heat exchanger
Drive	shaft
Engine controls	electrical & bowden cable
Gearbox	ZF280
Bowthruster	hydraulic Sidepower SH420
Sternthruster	hydraulic Sidepower SH420
Propeller type	fixed
Propeller blades	4
Propeller shaft material	stainless steel
Manual bilge pump	yes
Electric bilge pump	yes
Bilge alarm	yes
Electrical installation	12/24/228
Generator	silent separator Cummins Onan 12 kW, 4 cylinder
Batteries	yes
Start battery	yes
Service battery	4x Mastervolt Lithium 24/5500
Navigation Battery	Emergency battery installed for navigation
Generator battery	yes
Battery monitor	Maretron/ Yachtcontrol
Battery charger	Mastervolt 24/75 110 Volt/60 Hz for US market
Battery charger/inverter	2x Mastervolt Combi Pro 24/100/3500
Shorepower	228Volt/50 Hz and 110 Volt/60 Hz
Insulation transformer	yes
Watermaker	60 ltr/hr
Stabilizers	Najad



Extra info

2x Mastervolt Alternators Alpha pro 150 Amp

Extra info

ca 5000 ltr gasoline used 2,5 months cruising, genset and heating from NI to Spain

## NAVIGATION

Compass

Simrad HS80 GPS, fluxgate and plastimo offshore 135mm

Compass on flybridge

yes

Electric compass

Also showed on pilot

Multi control display

Maretron/Yachtcontrol

Depth sounder

yes

Depth sounder/log

yes

Forw. looking depth sounder

yes

Windset

Maretron Ultrawind

Repeater

yes

Fish finder

Simrad Chirp sounder

VHF

2x Sailor RT6215

VHF handheld

1 x GMDSS

Autopilot

Simrad EVO3 Ap 70

Rudder angle indicator

On pilot

Radar

Simrad Halo4 and Simrad Halo20

GPS

yes

Radar/GPS/plotter

Simrad/Maretron/Timezero/Navionics

Navtex

yes

Personal computer

yes

PC connection

yes

Wifi antenna

4/5G

Electronic chart(s)

Timezero and Navionics

AIS transceiver

Trueheading Em-track

EPIRB

yes

Camera

Engineroom, aft deck and flybridge. plus FLIR thermal camera

Navigation lights

yes



Searchlight	yes
Loudhailer	yes
Extra info	3x 27"monitors on bridge
Extra info	1x Simrad MO16T on flybridge

## EQUIPMENT

Fixed windscreen	yes
Storm blinds	On portholes
Sprayhood	yes
Bimini	yes
Sun awning	yes
Cockpit cushions	yes
Cockpit table	yes
Cockpit chairs	yes
Bathing platform	yes
Boarding ladder	stainless steel
Transom door	2 x
Gangway	Hydraulic
Deck shower	yes
Anchor	Pool
Anchor chain	13 mm, 100 mtr. DIN766
Anchor 2	Pool
Anchor chain	13 mm, 100 mtr. DIN766
Other ground tackle	Spudpalen 7 mtr Hydraulic operated anchor pool Telescopic Spud pools 7 mtr.2 x retractable pool anchor max 7 m
Windlass	hydraulic Lofrans Titan
Capstan	1 x on windlass 2 x on aftdeck
Deck wash	yes
Dinghy	Highfield 460
Outboard	Yamaha 50 hp
Deck crane	electric Opacmare 3030/42



Sea railing	stainless steel
Life raft	2
Life raft (pers)	container 6 x 2
Last life raft survey	2022
Lifejackets	8 plus 4 Solas
Safety harness	yes
Rope cutter	2 x
Wiper	yes
Clearview window	yes
Window heating	3 x heated windows
Horn	yes
Binocular	yes
Radar reflector	SART
Fenders	10
Mooring lines	yes
Spare parts	yes
Tools	yes
TV	2x on lift (1x salon, 1x owners' cabin)
Radio-cd player	yes
iPod connection	Fusion sound system
Surround Sound System	yes
Sub-woofer	yes
Cockpit speakers	yes
Speakers in salon	yes
Clock - barometer	yes
Fire extinguisher	yes
Extinguisher in engine room	yes
Extra info	Condition check vessel at home via Yachtcontrol and app.
Extra info	8 survival suits on board

## RIGGING



**Material mast**

aluminium Radarmast











# DOGGERSBANK 66

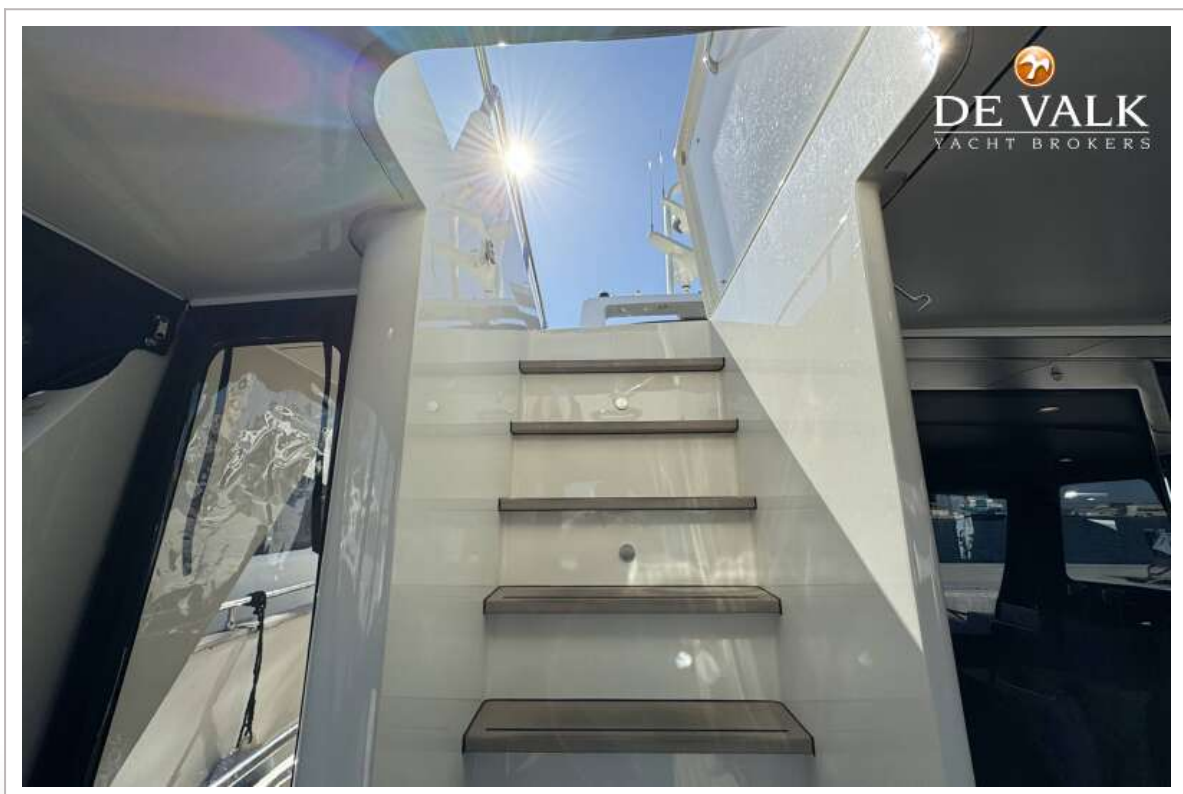


# DOGGERSBANK 66



# DOGGERSBANK 66





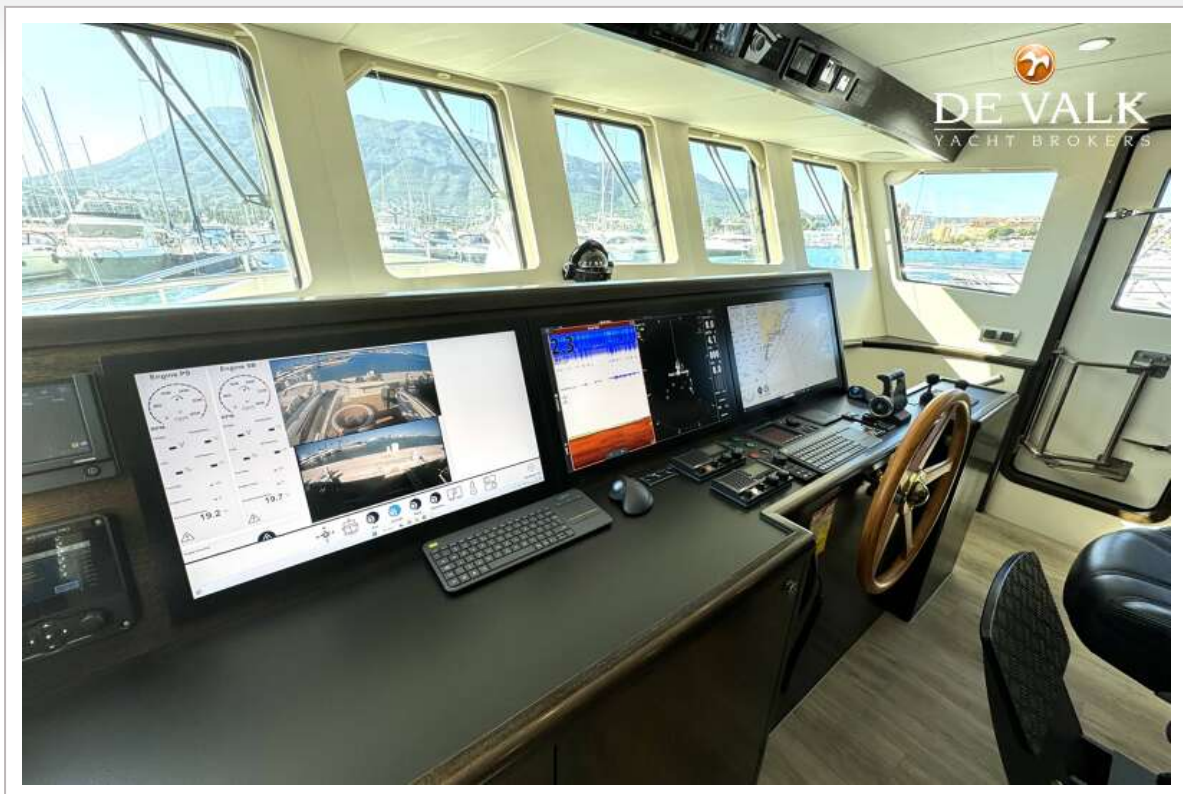
# DOGGERSBANK 66



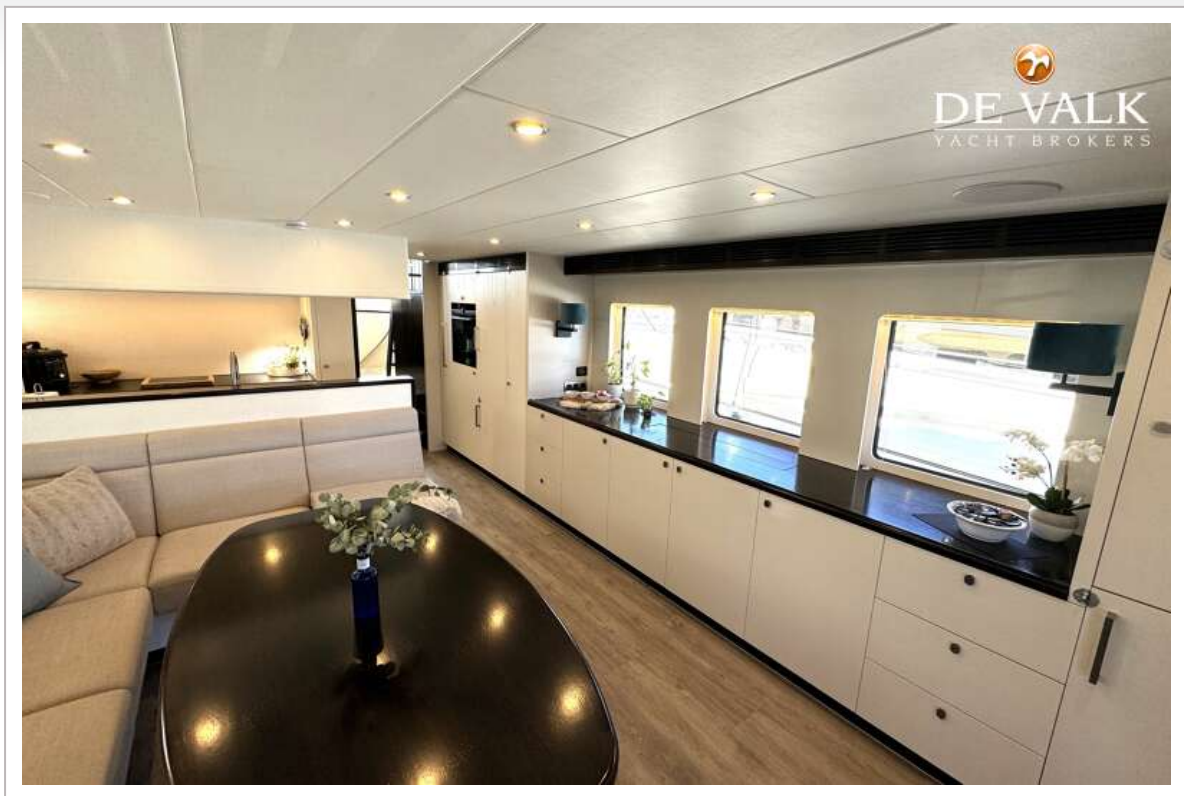
## DOGGERSBANK 66



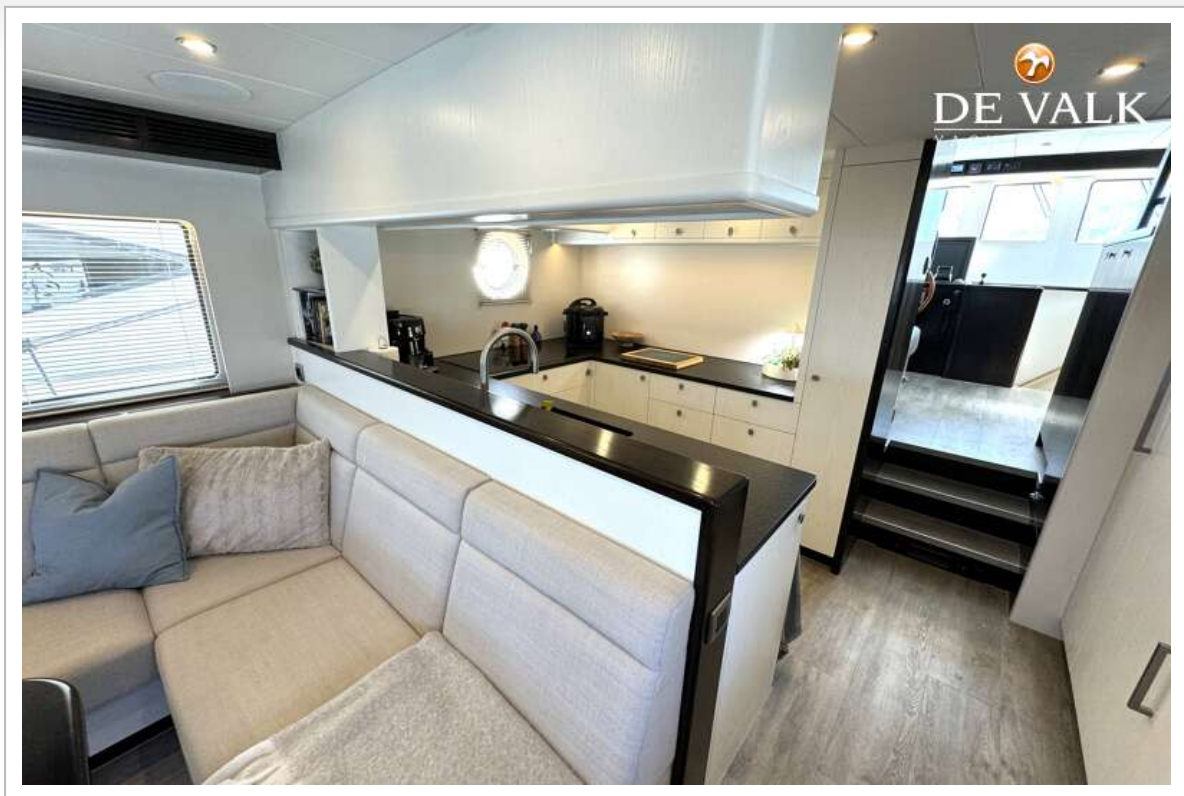
# DOGGERSBANK 66



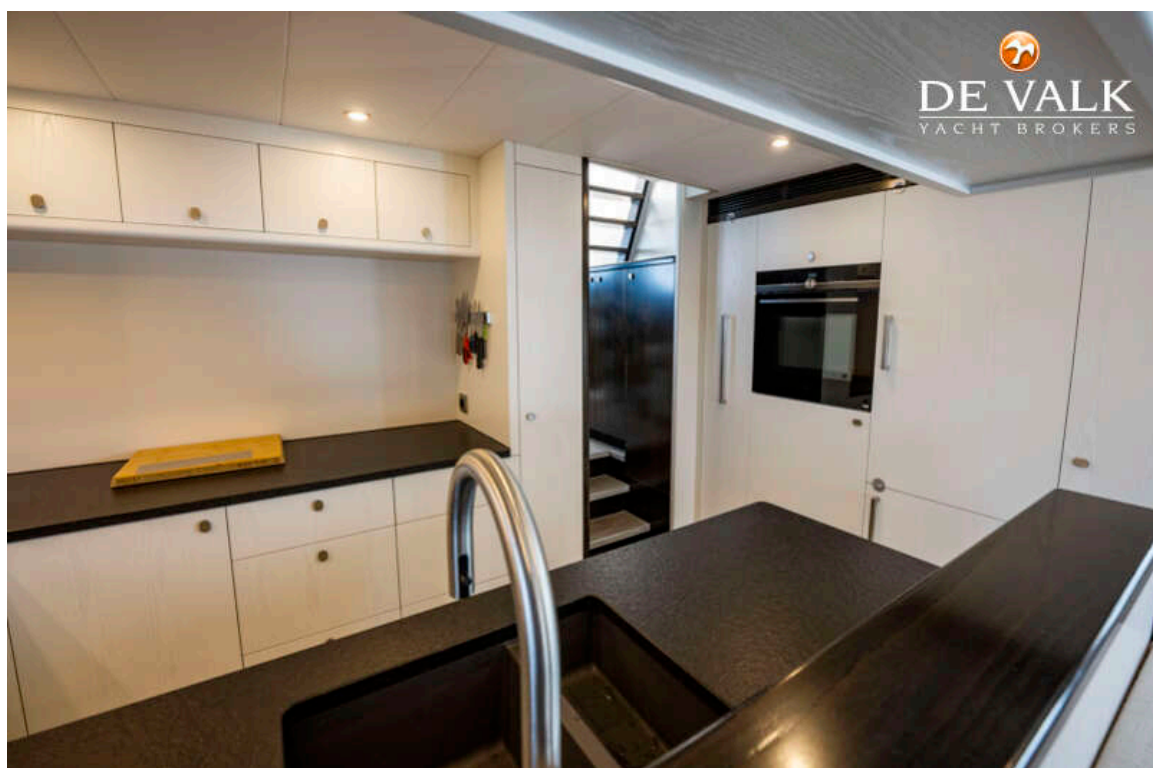
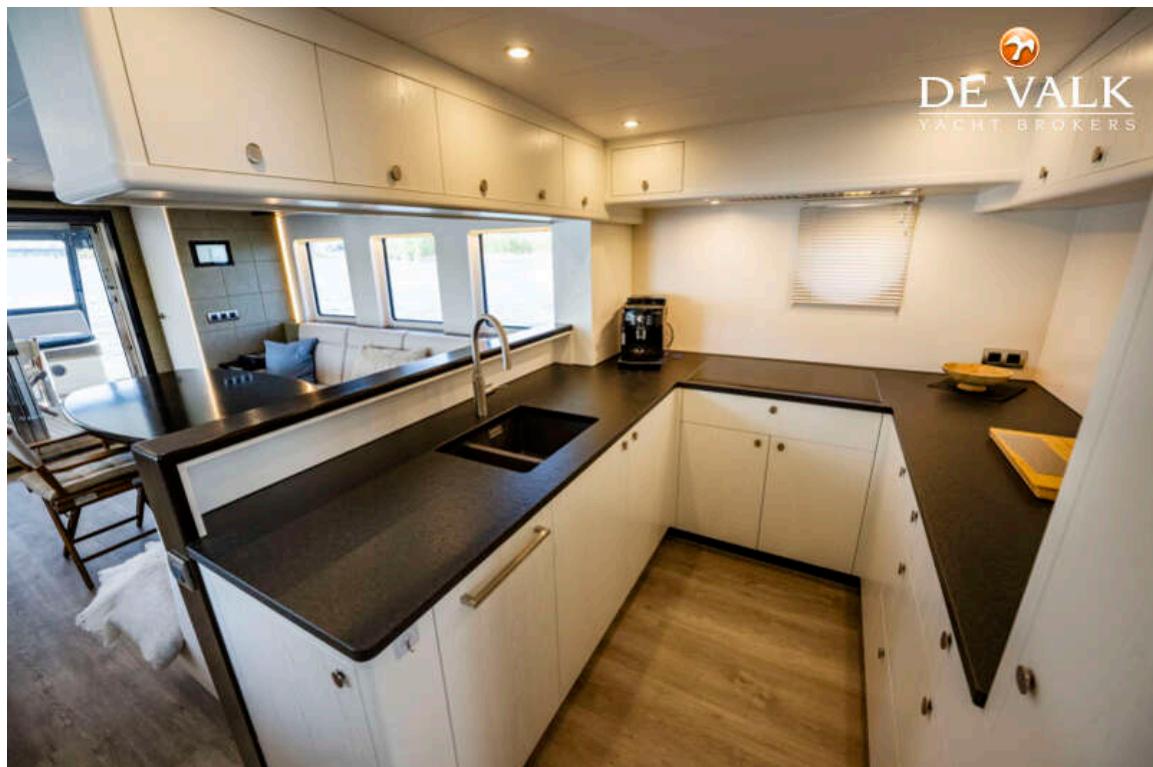
# DOGGERSBANK 66

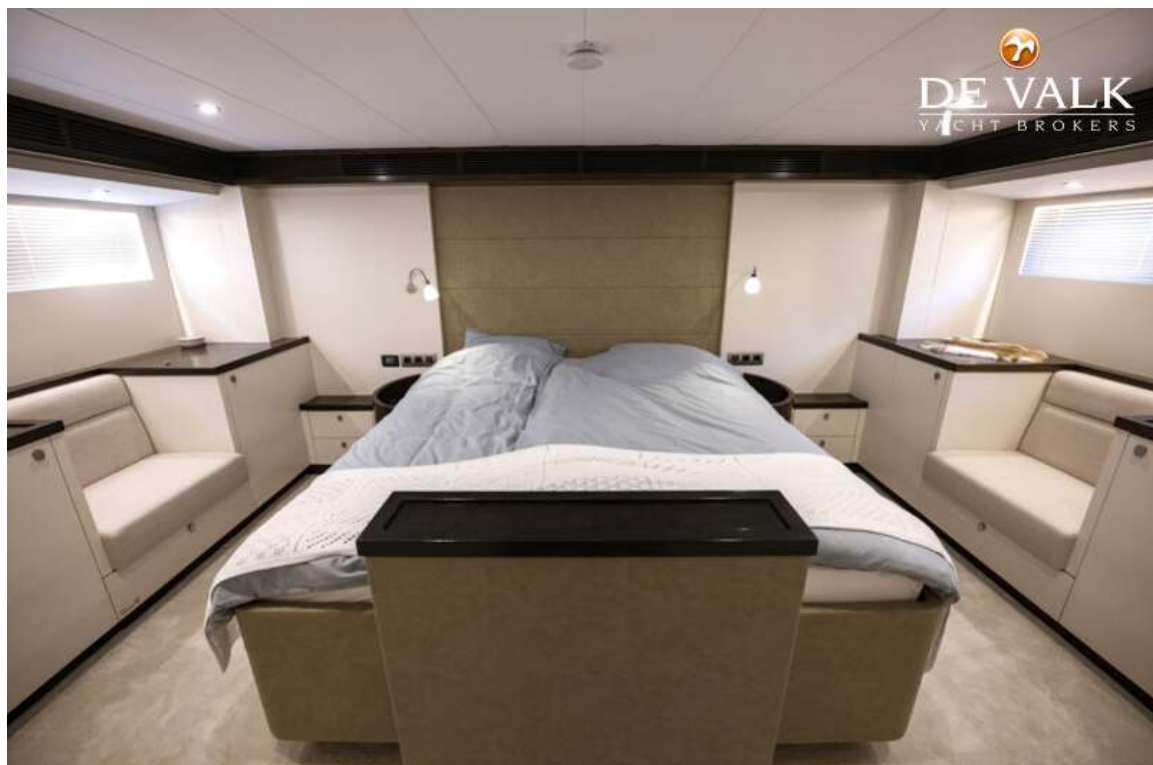


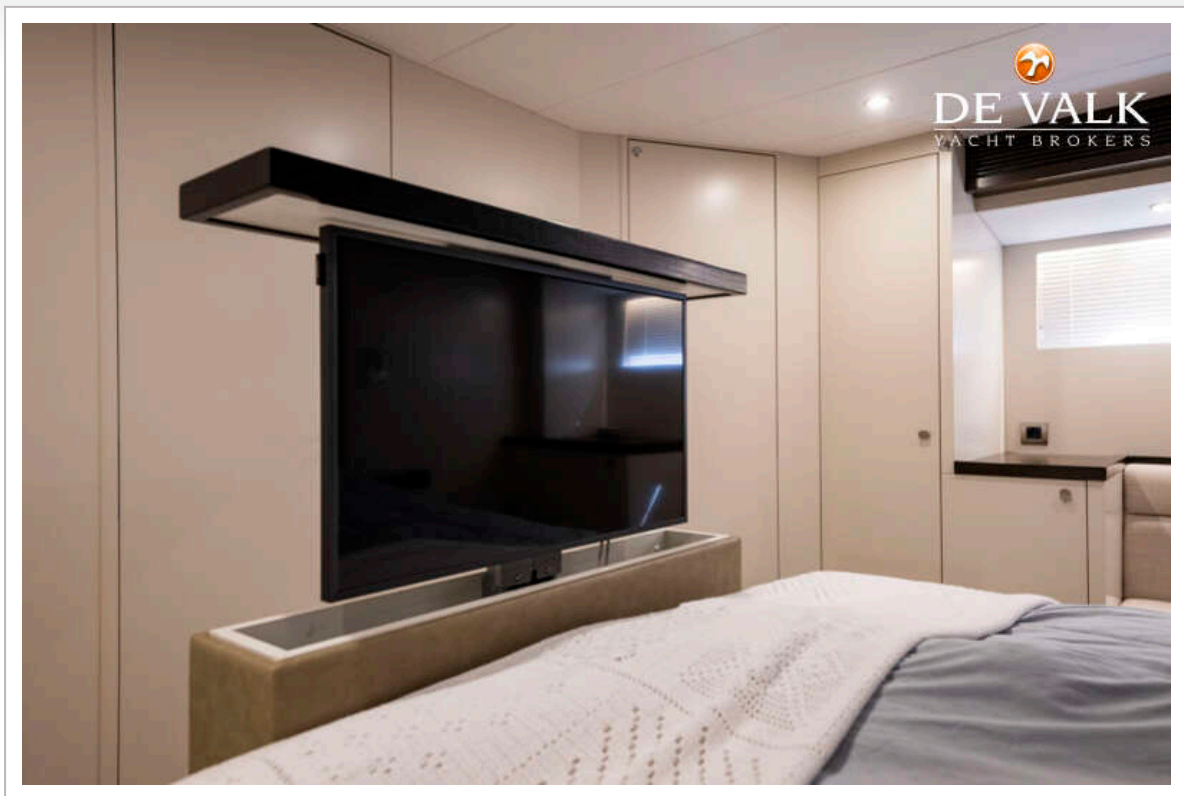
# DOGGERSBANK 66



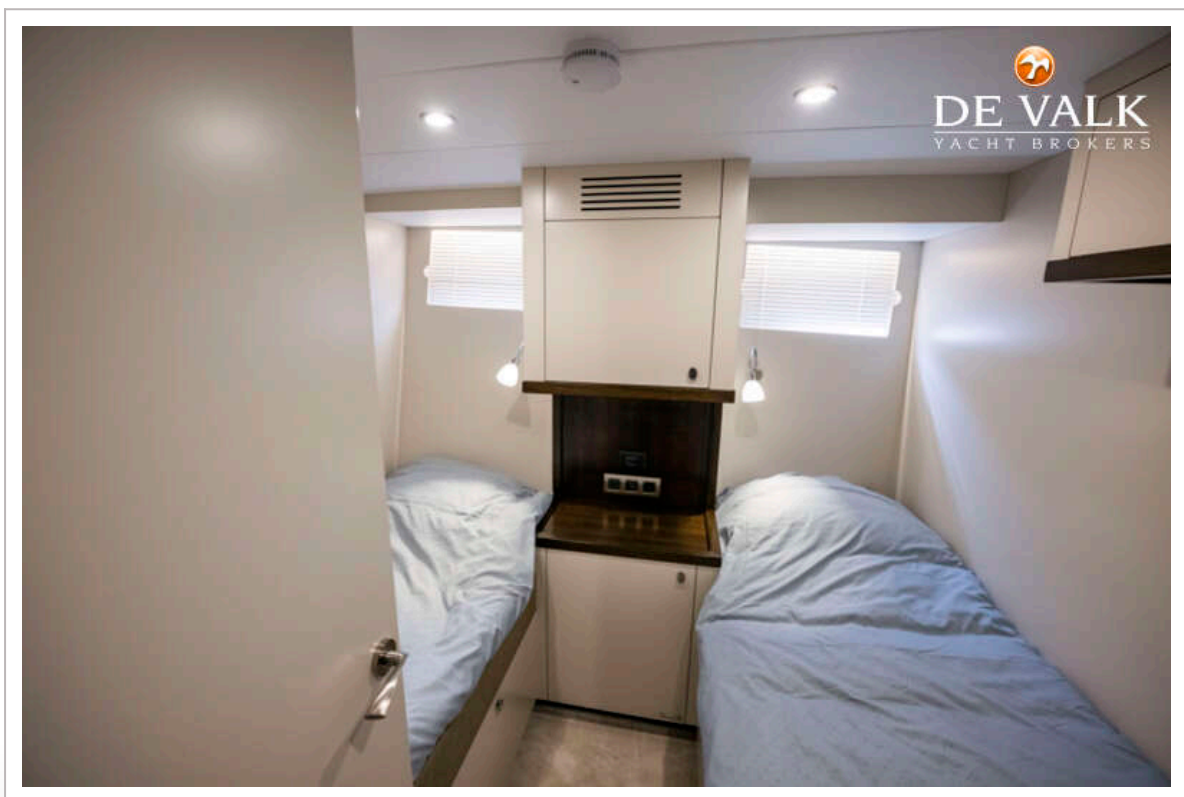
# DOGGERSBANK 66







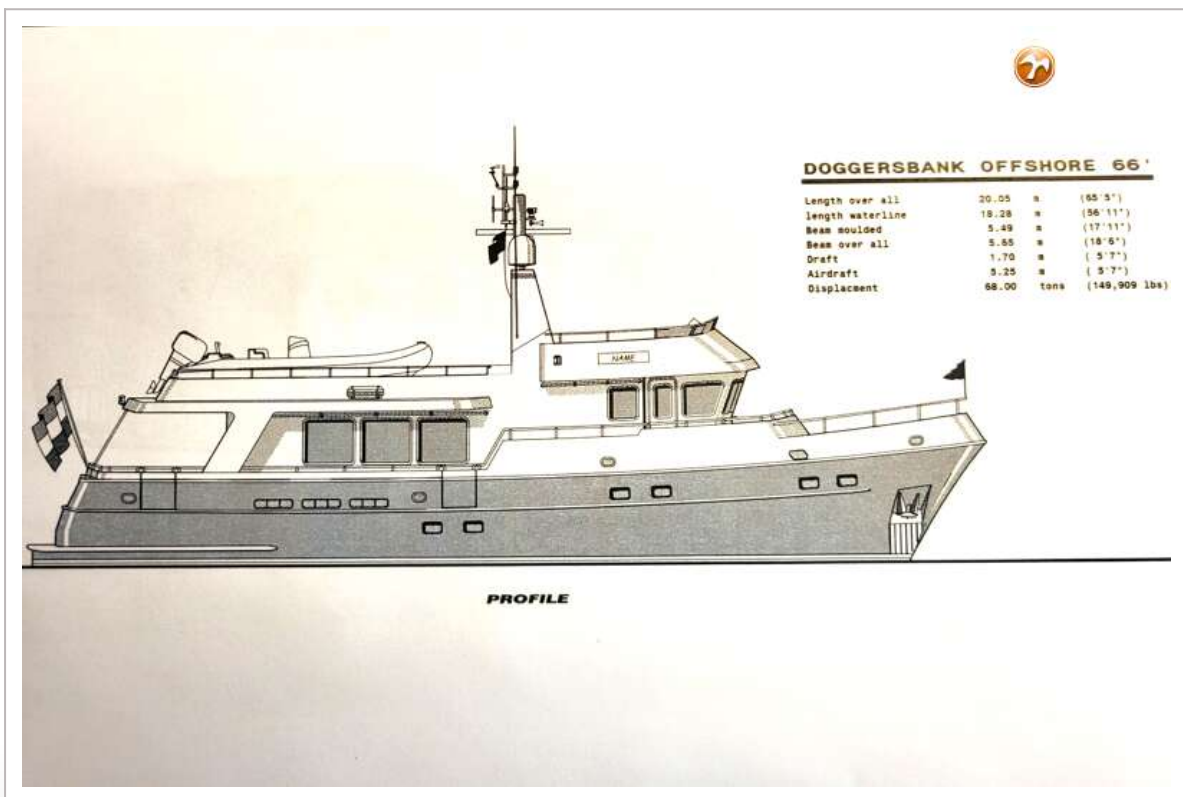
# DOGGERSBANK 66







# DOGGERSBANK 66



# DOGGERSBANK 66

