



TAYLOR DAVIDSEN CATAMARAN TD547



TAYLOR DAVIDSEN CATAMARAN TD547

BROKER'S COMMENTS

We are afraid this Taylor Davidsen Catamaran is just for the Happy Few. 5* Plus accommodation with superb sailing performance, different & totally unique! You have to see this spectacular yacht to believe it. This is not just a Cat, there is no comparison on the market! No expenses saved on the 2010/2013 building process, the extensive 2018 upgrades in The Netherlands and the overall maintenance. Beautiful detailing with leather, carbon and f/i bamboo. Installed navigation package is "over the top". Never chartered, one owner from new. Delivered in almost as new condition.

Willem Koopmans

SPECIFICATIONS

| | | | |
|---------------------|---------------------------|----------------|--------------------------------|
| Dimensions | 16.28 x 8.53 x 1.45 (m) | Builder | Taylor Davidsen / Multi Marine |
| Built | 2013 | Cabins | 3 |
| Material | GRP | Berths | 6 |
| Engine(s) | 2 x Yanmar 4JH80CR diesel | Hp/Kw | 2 x 80.00 (hp), 58.88 (kw) |
| Asking price | € 2.950.000 (VAT Paid) | Lying | contact sales office |

CONTACT

| | | | |
|---------------------|---|------------------|-----------------------|
| Sales office | De Valk Costa Blanca | Telephone | +34 96 50 21 569 |
| Address | Costa Blanca Region 03730 Javea Alicante ES | E-mail | costablanca@devalk.nl |

DISCLAIMER

These particulars are given in good faith as supplied but cannot be guaranteed.



GENERAL

| | |
|------------------------------|--------------------------------------|
| Model | TAYLOR DAVIDSEN CATAMARAN TD547 |
| Type | catamaran sailing yacht |
| LOA (m) | 16,28 |
| Beam (m) | 8,53 |
| Draft (m) | 1,45 |
| Headroom (m) | 2,10 |
| Year built | 2013 |
| Launched | 2013 |
| Builder | Taylor Davidsen / Multi Marine |
| Country | United Kingdom |
| Displacement (t) | 18,2 |
| CE norm | A |
| Hull material | GRP |
| Hull colour | orange Metallic |
| Superstructure material | GRP With carbon strength and details |
| Deck material | GRP |
| Deck finish | synthetic teak |
| Superstructure deck finish | non-skid moulded in |
| Cockpit deck finish | synthetic teak |
| Antifouling (year) | 2025 |
| Window material | tempered glass |
| Deckhatch | yes |
| Portholes | yes |
| Insulation | yes |
| Fuel tank (litre) | 800 |
| Level indicator (fuel tank) | yes |
| Freshwater tank (litre) | 1000 |
| Level indicator (freshwater) | yes |
| Blackwater tank (litre) | yes |
| Wheel steering | Custom made carbon wheel |



| | |
|------------------------|---|
| Inside helm position | yes |
| Outside helm position | yes |
| Emergency tiller | yes |
| More info on hull | Reinforced with Kevlar |
| More info on paintwork | AWL grip 2018 |
| Extra info | Extensive refit done at Breskens Yachtservice; costs € 1.8 mil. |
| Extra info | New built price over 8 million, refit € 1,8 mil. |
| Extra info | Carbon details: mast, davits, supports etc. |

ACCOMMODATION

| | |
|--------------------------|---|
| Cabins | 3 |
| Berths | 6 |
| Interior | Luxury built with f/i leather details, bamboo |
| Layout | Built for owner and 4 guests |
| Floor | Wood and carpet |
| Open cockpit | yes |
| Aft deck | yes |
| Pilot house/deck saloon | yes |
| Headroom saloon (m) | 2,1 |
| Air-conditioning | reverse cycle airco In all cabins |
| Navigation center | Look at the high end equipment! |
| Chart table | yes |
| Sliding door to aft deck | Manual, can be electric |
| Galley | yes |
| Countertop | corian |
| Sink | stainless steel 1,5 |
| Cooker | Miele, 4 burner, halogen |
| Oven | Miele, plus Magma grill on aft deck |
| Microwave | yes |
| Fridge | Miele, plus 1 on aft deck |
| Freezer | Miele |



| | |
|-----------------------------|--|
| Hot water system | 220V + engine Boiler |
| Water pressure system | electrical |
| Dishwasher | Miele |
| Ice maker | Ice cubes machine, make Winkel |
| Owners cabin | French bed Sb hull completely decorated for a demanding owner, with office |
| Bed length (m) | 2,1 |
| Wardrobe | hanging/drawers/shelves |
| Bathroom | en suite |
| Toilet | en suite |
| Toilet system | electric |
| Wash basin | in the bathroom Double |
| Shower | en suite In separate part of bathroom |
| Extra info | Office space to work privately |
| Guest cabin 1 | double bed Aft |
| Bed length (m) | 2,1 |
| Wardrobe | hanging/drawers/shelves |
| Bathroom | en suite |
| Toilet | en suite |
| Toilet system | electric |
| Wash basin | in the bathroom |
| Shower | en suite |
| Guest cabin 2 | French bed Front |
| Bed length (m) | 2,1 |
| Wardrobe | hanging/drawers/shelves |
| Bathroom | separate |
| Toilet | separate |
| Toilet system | electric |
| Wash basin | in the bathroom |
| Shower | separate |
| Washing machine/dryer combi | Miele Honeycomb Care WT2780 |
| Extra info | Window between galley and aft deck can be completely opened |



MACHINERY

| | |
|-------------------------|---|
| No of engines | 2 |
| Make | Yanmar |
| Type | 4JH80CR |
| HP | 80 |
| kW | 58.88 |
| Fuel | diesel |
| Year installed | 2018 |
| Year of overhaul | Original 55 Hp replaced for more powerful units |
| Maximum speed (kn) | 10 |
| Cruising speed (kn) | 8 |
| Consumption (l/hr) | 8 |
| Engine hours | 350 |
| Engine cooling system | freshwater heat exchanger |
| Drive | sail-drive |
| Saildrive seal | 2018 |
| Engine controls | electrical |
| Gearbox | yes |
| Exhaust | watercooled |
| Manual bilge pump | yes |
| Electric bilge pump | yes |
| Bilge alarm | yes |
| Electrical installation | 24/12/228 |
| Generator | Mastervolt 10 kW |
| Running hours generator | 102 |
| Batteries | yes |
| Start battery | 2x |
| Service battery | 4x Mastervolt MLI Ultra lithium 24/5000 |
| Generator battery | 1x |
| Battery charger | 3x Mastervolt Combi 24V/3500Amp |
| Inverter | yes |



| | |
|------------------------|-----------------------|
| Wind generator | 2x Silent Wind |
| Solar panel | 10x |
| Shorepower | yes |
| Insulation transformer | Mastervolt |
| Watermaker | Spectra, 150-200 l/hr |
| Extra info | Double Racor filters |
| Extra info | Fuel polishing system |

NAVIGATION

| | |
|------------------------|--|
| Compass | yes |
| Electric compass | On autopilot |
| Multi control display | 3 x Raymarine I 70; 1x outside, 2x inside |
| Depth sounder | See multi control |
| Log | See multi control |
| Windset | See multi control |
| VHF | Raymarine DSC |
| Autopilot | Raymarine ACU 400 |
| Rudder angle indicator | yes |
| Radar | 2 x Raymarine ,1x Quatum Digital X band and 1x Digital |
| GPS | yes |
| Radar/GPS/plotter | 12 and 7 inch outside 23 and 7 inch inside |
| Navtex | Furuno, |
| Personal computer | Professional pc at office space |
| PC connection | yes |
| Wifi antenna | yes |
| AIS transceiver | Raymarine |
| EPIRB | yes |
| Camera | Flir Thermal one, control inside and at helm plus camera in mast |
| Navigation lights | yes |
| Extra info | 2x satellite phone (Iridium) on board, each with own phone no. |



EQUIPMENT

| | |
|----------------------------|--|
| Fixed windscreen | In dogger, front windows opens electric |
| Fixed hardtop | yes |
| Cockpit cover | Fix carbon roof with sliding glass windows with tarpaulins |
| Sun awning | Cover consisting of fly screens |
| Winter cover | Completely closed wintercover, plus 1 cover with windows |
| Cockpit cushions | yes |
| Cockpit table | yes |
| Bathing platform | yes |
| Boarding ladder | yes |
| Gangway | Electrical |
| Deck shower | yes |
| Anchor | Rockna Manson supreme 80 lbs |
| Anchor chain | Stainless steel |
| Anchor 2 | Rockna Manson supreme 60 lbs |
| Anchor chain | Stainless steel |
| Chain counter | 2x |
| Windlass | electrical |
| Deck wash | yes |
| Dinghy | With battery charger |
| Outboard | yes |
| Davits | Carbon |
| Davits controls | yes |
| Grab rail (superstructure) | yes |
| Life raft | container Seago Raft-G-8 |
| Life raft (pers) | 8 |
| Lifejackets | 8x Seago, type 275N |
| Horn | yes |
| Radar reflector | yes |
| Fenders | yes |
| Mooring lines | yes |



| | |
|-----------------------------|---|
| Spare parts | yes |
| TV | 2x Samsung, 1x in salon, 1x in owners cabin |
| Radio-cd player | Full Fusion set including several places to operate |
| iPod connection | yes |
| Sub-woofer | yes |
| Speakers in salon | yes |
| Speakers in cabin | yes |
| Clock - barometer | yes |
| Fire extinguisher | yes |
| Extinguisher in engine room | yes |
| Extra info | Compressor for diving bottles, under water lights |
| Extra info | This yacht is "over the top built and equipped" |
| Extra info | yes |

RIGGING

| | |
|-------------------------|--------------------------------|
| Rigging | sloop |
| Standing rigging | Rod |
| Brand mast | Offshore Spars |
| Material mast | carbon Built in one piece! |
| Spreaders | Carbon |
| Mainsail | yes |
| Mainsail cover | Lazy bag |
| Battcars | yes |
| Fully battened mainsail | North 2018 3DI, new 2017 |
| Cutterstay | yes |
| Genoa | North 3DI, new 2017 |
| Genoa furler | 2 x Reckman, electric |
| Gennaker | North (orange color), new 2017 |
| Reefing System | quick-one-line-reefing |
| Boomvang | yes |
| Primary sheet winch | 2x Harken 80, electric |



Genoa sheetwinches

2x Harken 40

Halyard winches

4x Harken 60, electric

Multifunctional winches

yes

Gennaker pole

carbon

Extra info

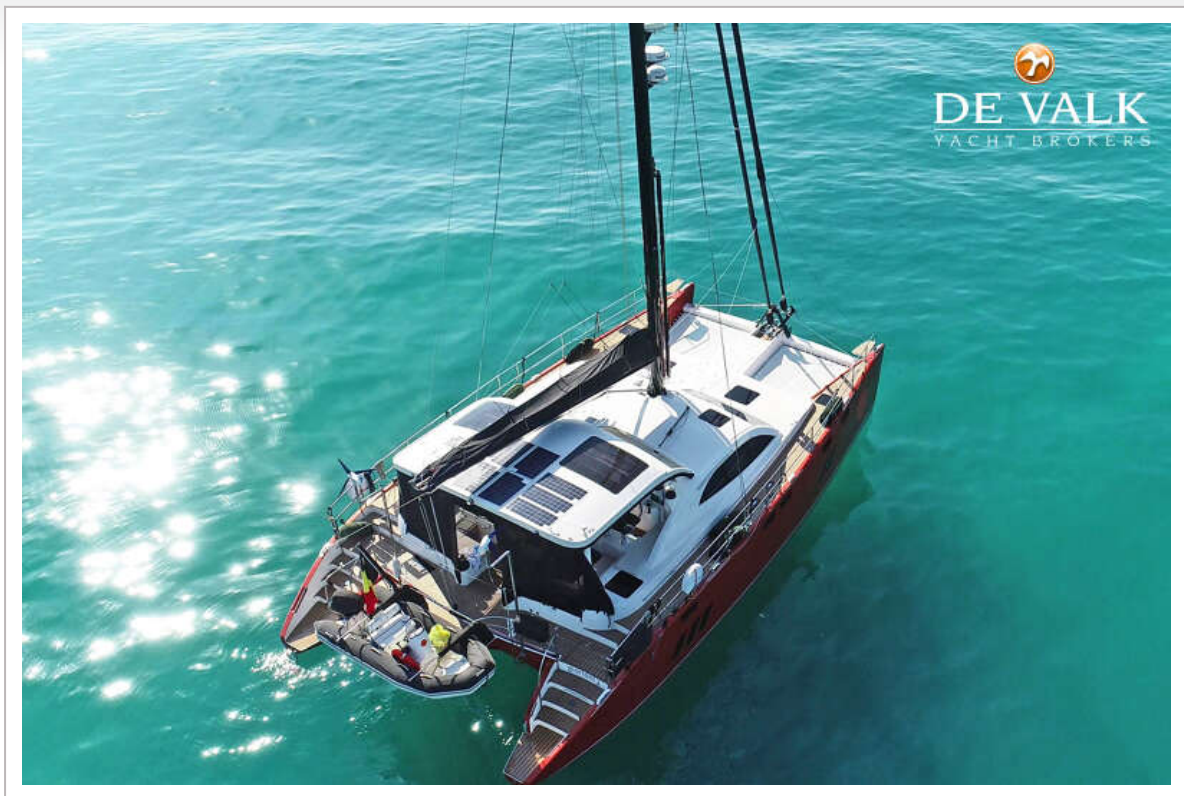
Rigging, mast and sails in very good condition.

Extra info

Boom: carbon smart



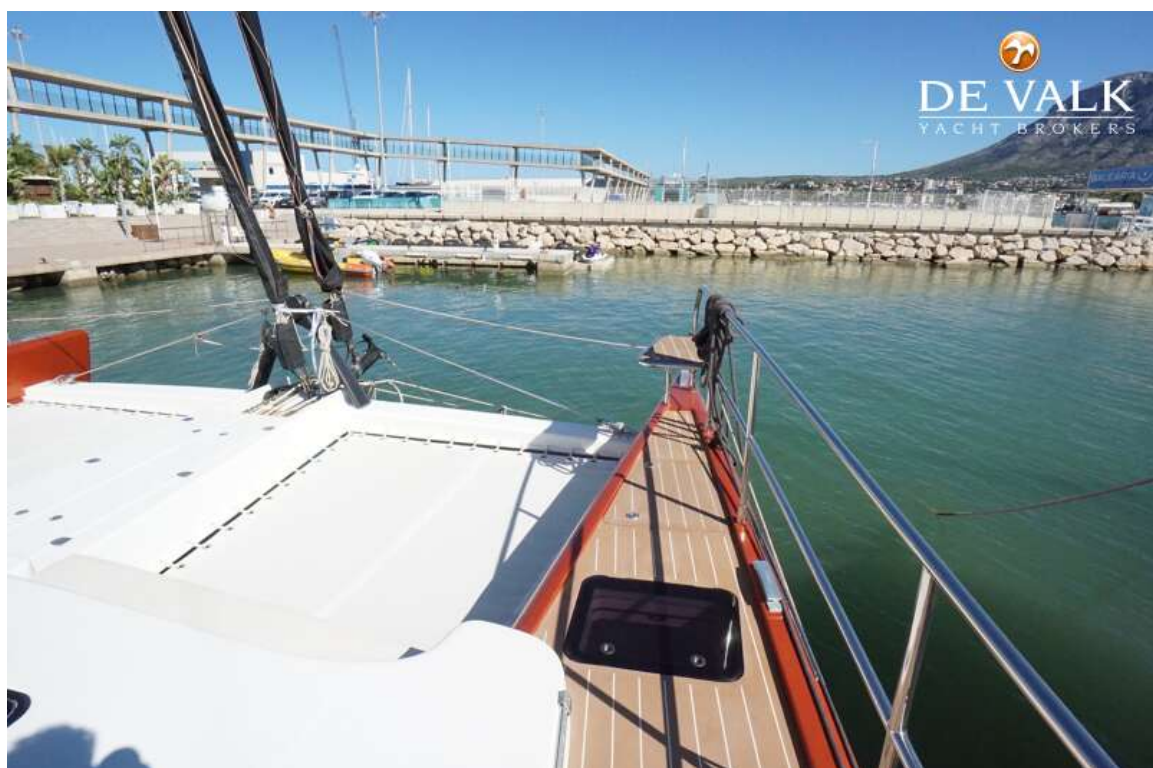
TAYLOR DAVIDSEN CATAMARAN TD547



TAYLOR DAVIDSEN CATAMARAN TD547



TAYLOR DAVIDSEN CATAMARAN TD547



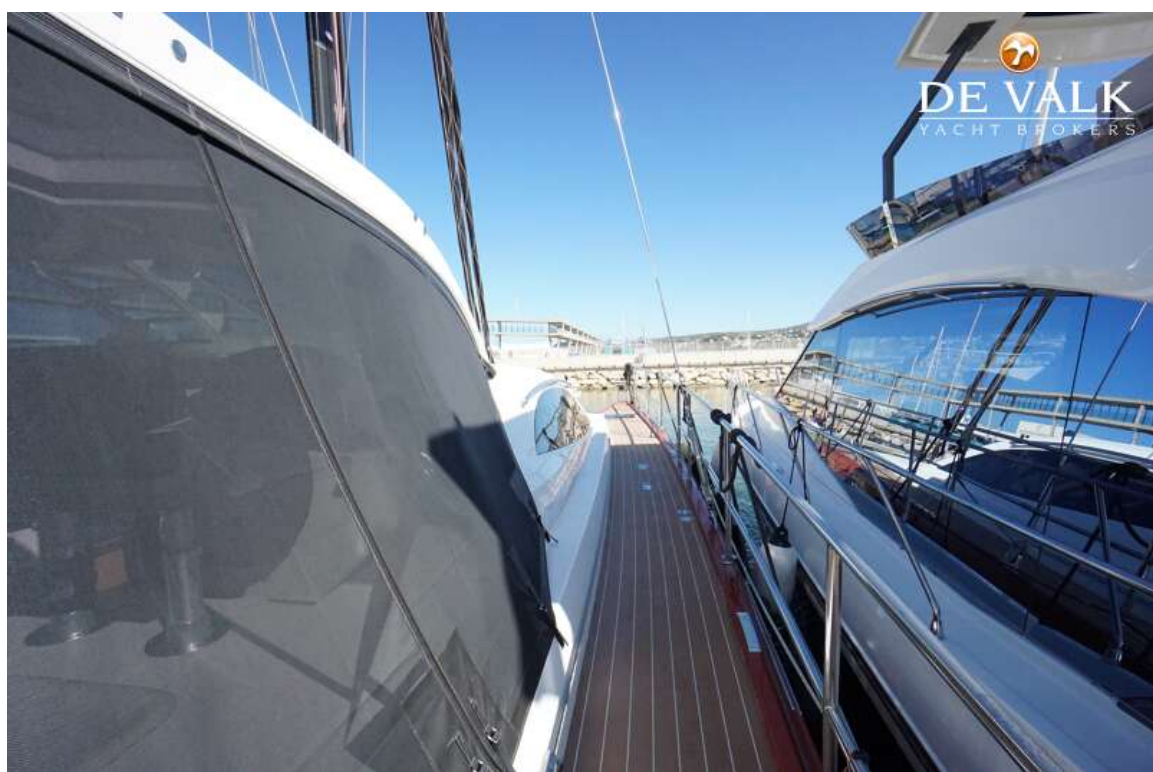


TAYLOR DAVIDSEN CATAMARAN TD547





TAYLOR DAVIDSEN CATAMARAN TD547



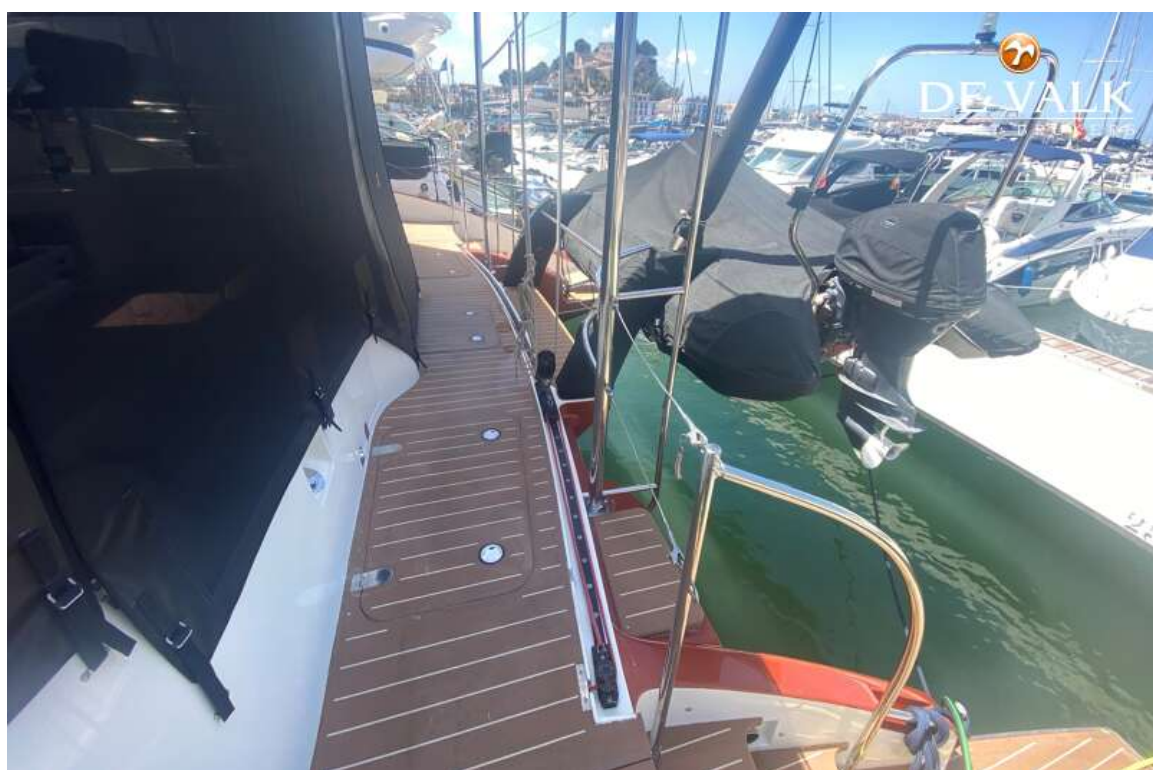
TAYLOR DAVIDSEN CATAMARAN TD547



TAYLOR DAVIDSEN CATAMARAN TD547



TAYLOR DAVIDSEN CATAMARAN TD547



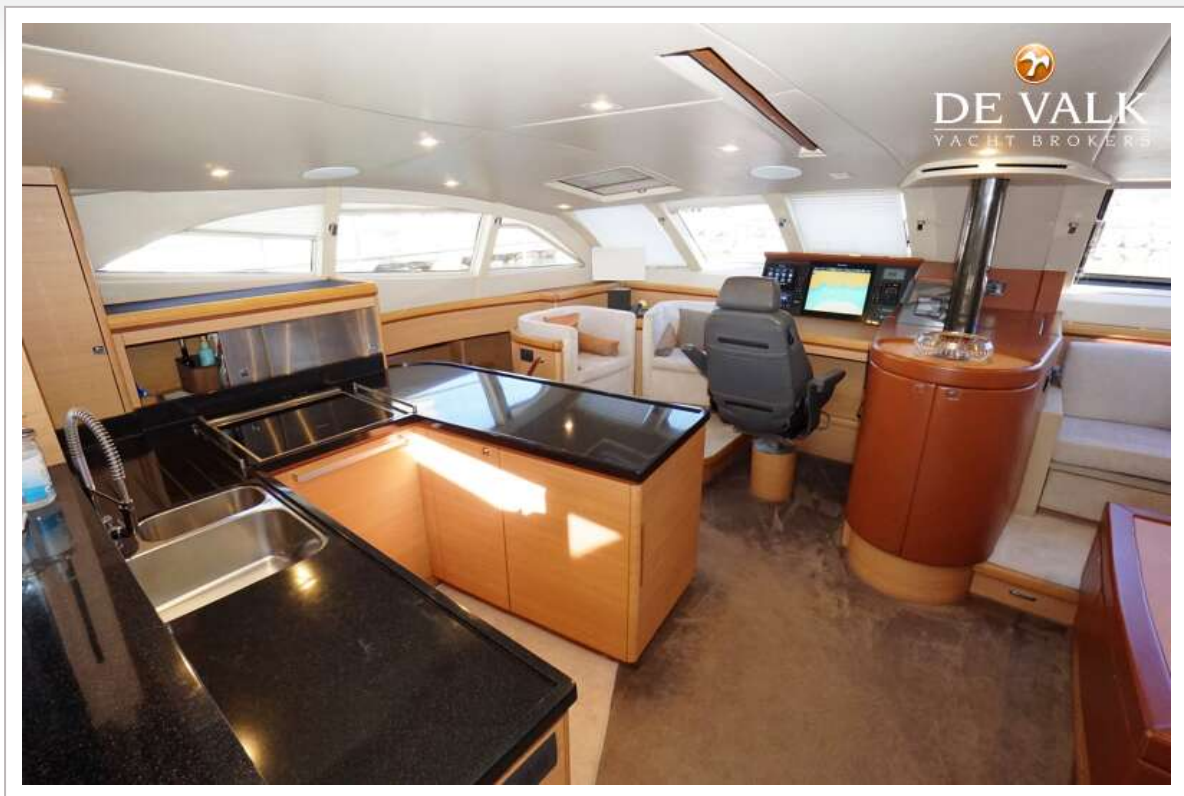
TAYLOR DAVIDSEN CATAMARAN TD547



TAYLOR DAVIDSEN CATAMARAN TD547



TAYLOR DAVIDSEN CATAMARAN TD547



TAYLOR DAVIDSEN CATAMARAN TD547

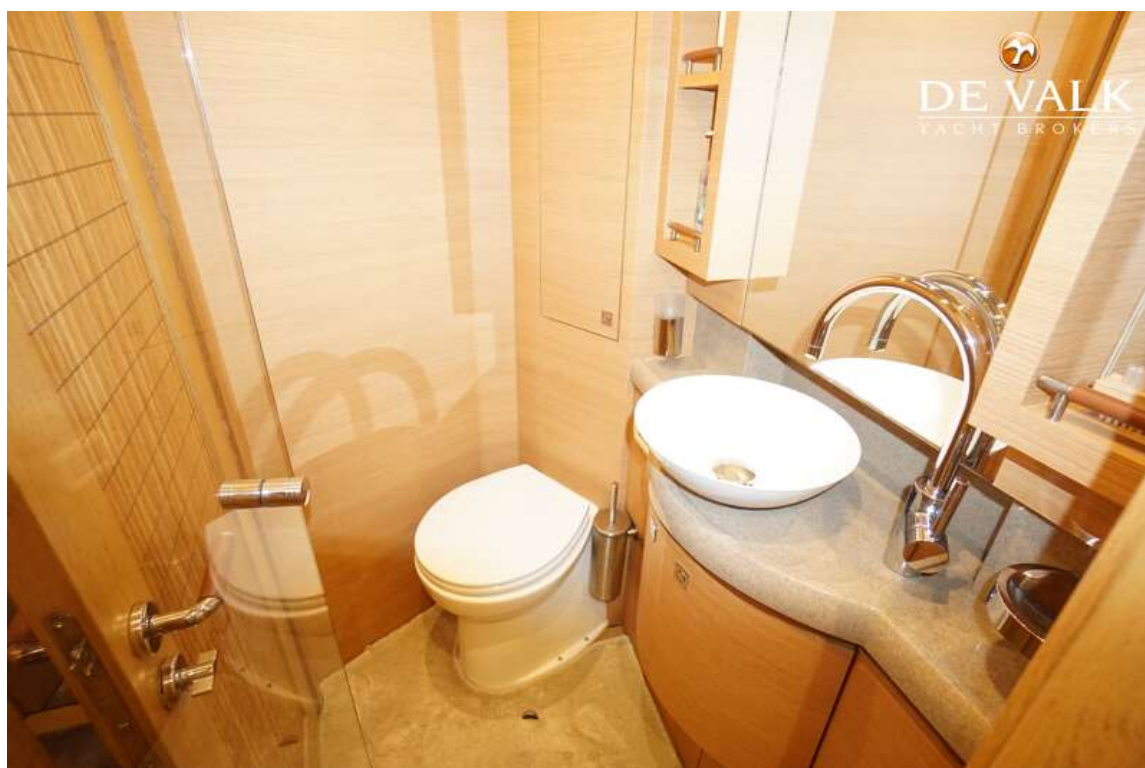


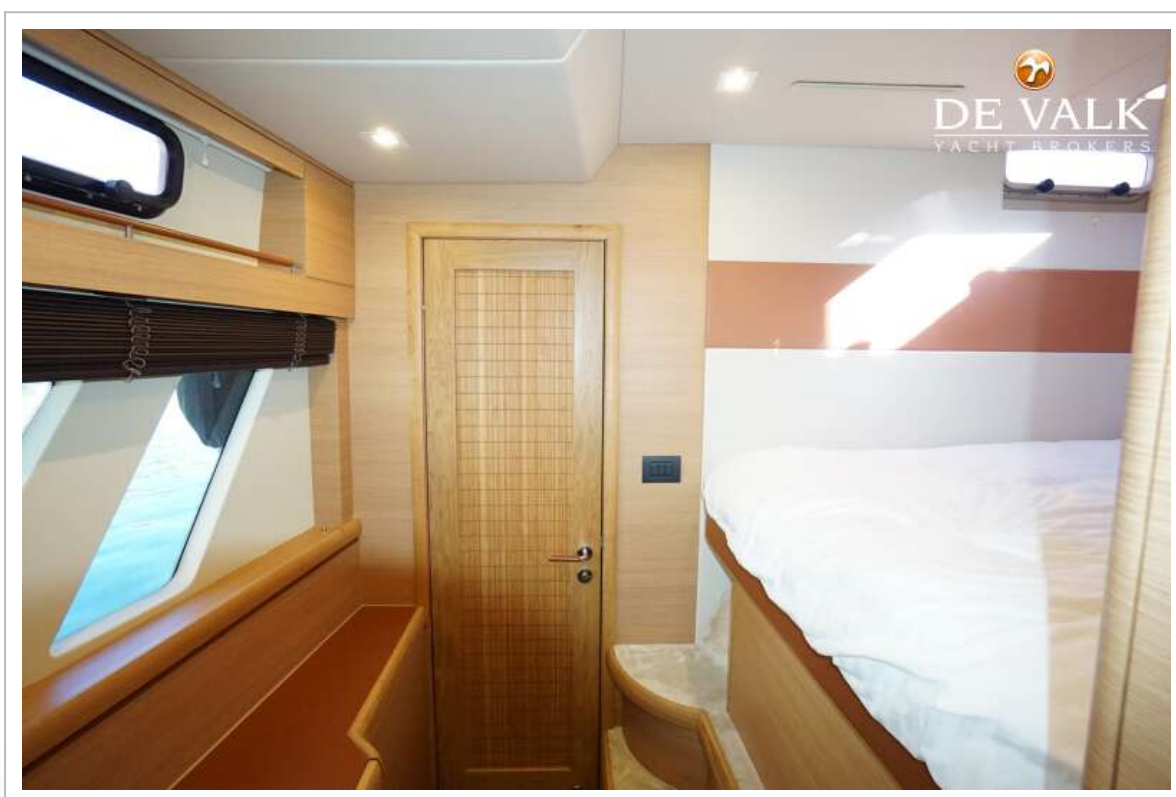
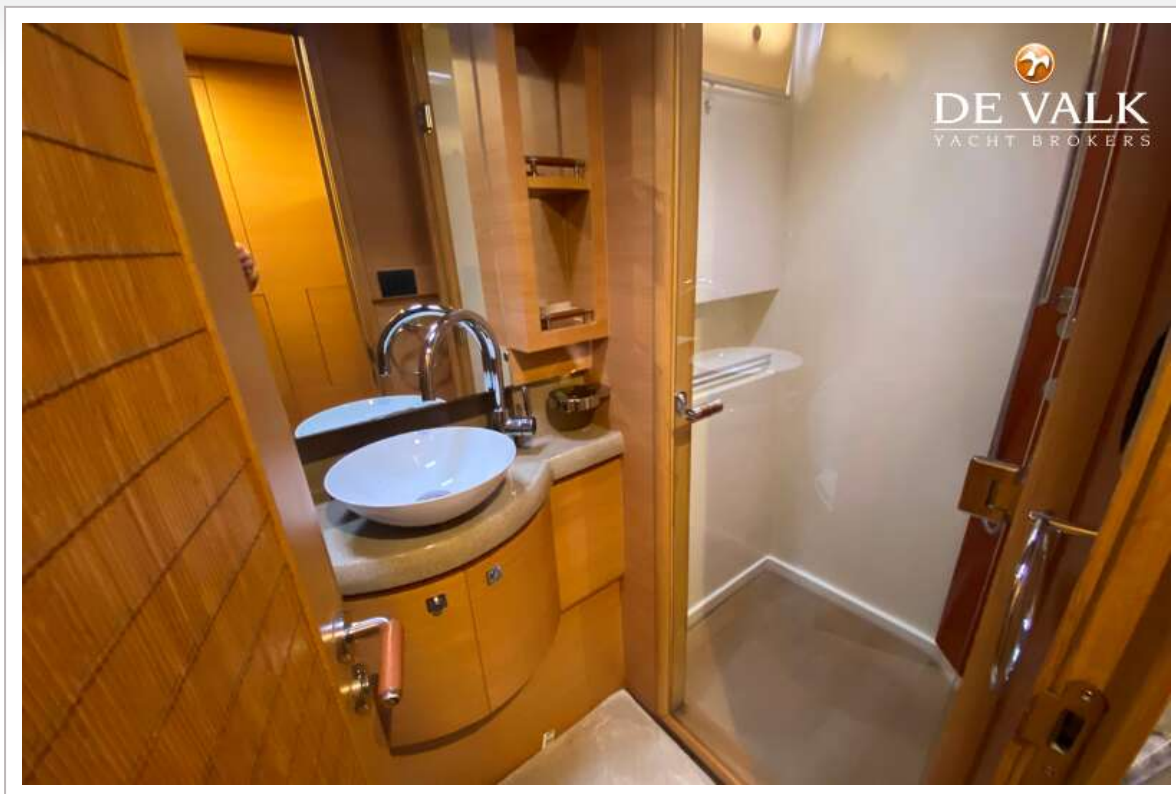
TAYLOR DAVIDSEN CATAMARAN TD547



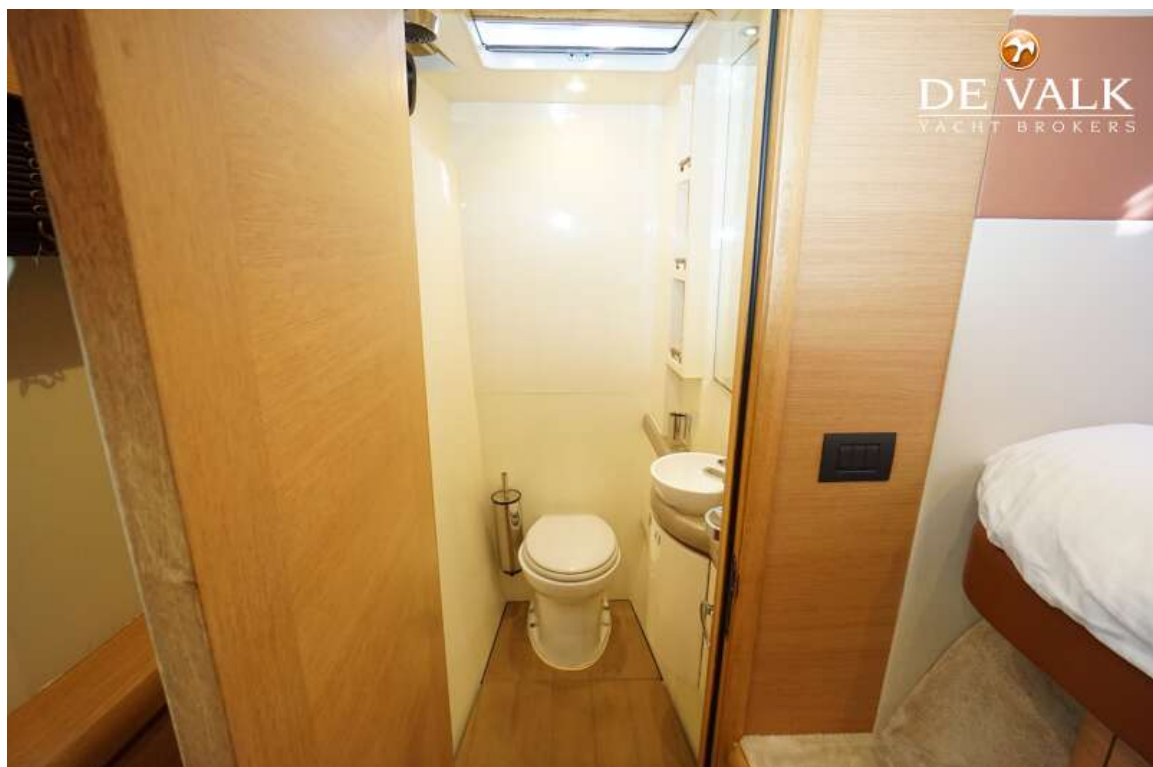
TAYLOR DAVIDSEN CATAMARAN TD547

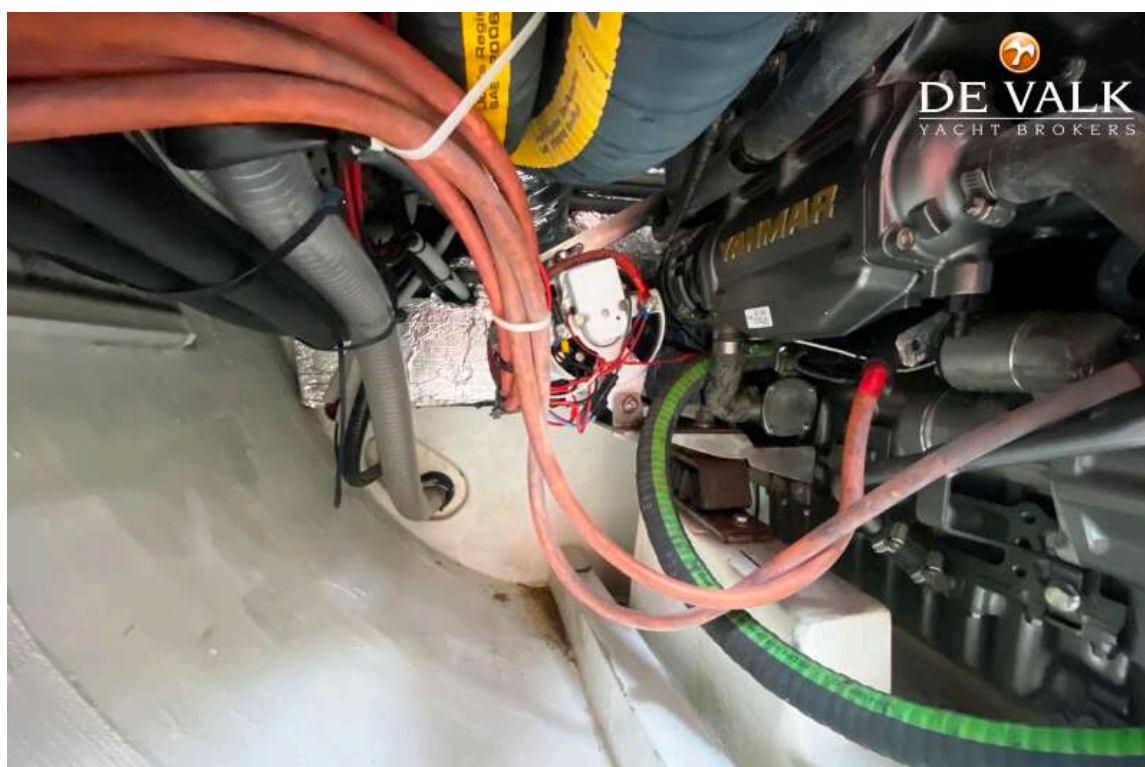


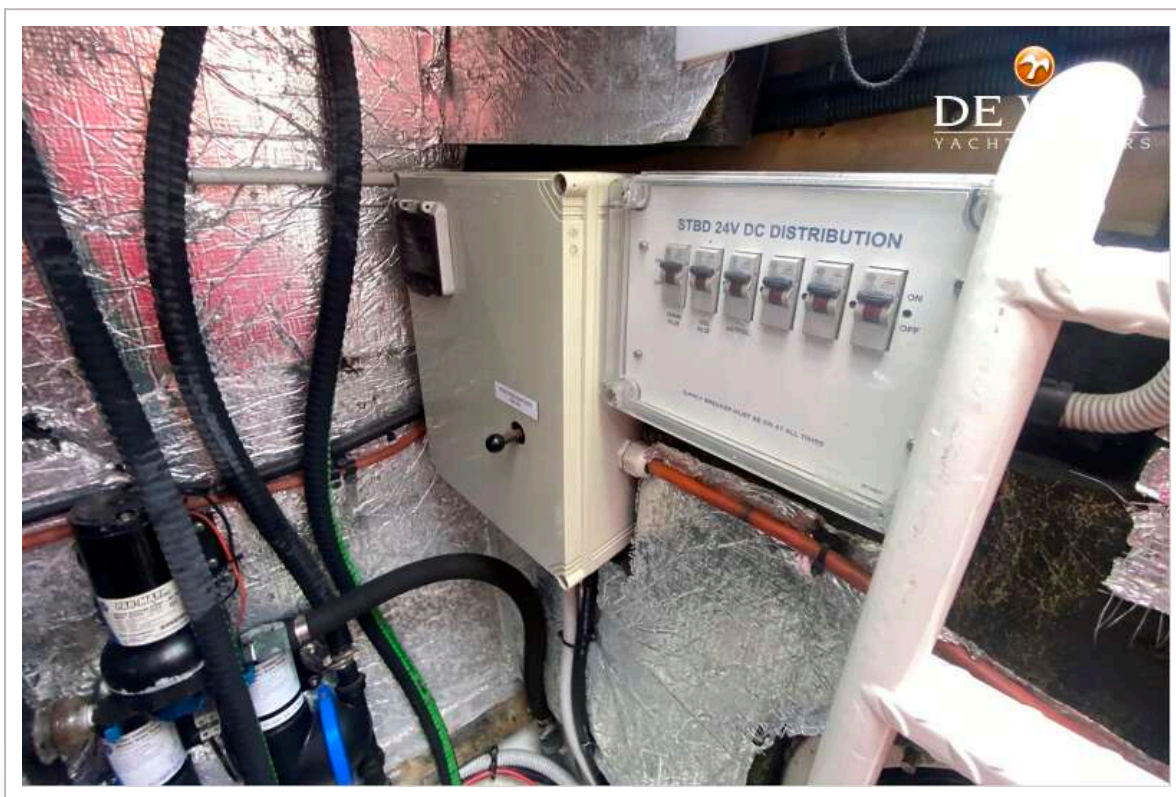




TAYLOR DAVIDSEN CATAMARAN TD547







[illegible]