



## WHARRAM TIKI 38



## BROKER'S COMMENTS

The Wharram Tiki 38 is a 12-meter Rossetti-style catamaran. Offering sailors a living space with an unimaginable comfort. A perfect spacious setting to enjoy during the day and a lovely interior to relax at any moment. The Wharram Tiki 38 is a modern catamaran owning its own old-style character to enjoy the real spirit of sailing. Lying in Italy, Marina Genova

*Ger Bayens*

## SPECIFICATIONS

<b>Dimensions</b>	11.80 x 6.40 x 0.80 (m)	<b>Builder</b>	Andrea Rossetti's LWB shipyard
<b>Built</b>	2016	<b>Cabins</b>	3
<b>Material</b>	Wood Epoxy	<b>Berths</b>	5
<b>Engine(s)</b>	2 x Lombardini diesel	<b>Hp/Kw</b>	2 x 18.00 (hp), 13.25 (kw)
<b>Asking price</b>	€ 92.500 (VAT Paid)	<b>Lying</b>	at sales office

## CONTACT

<b>Sales office</b>	De Valk Thuishaven	<b>Telephone</b>	+31 35 5829042
<b>Address</b>	Peperstraat 7 1411 PX Naarden NL	<b>E-mail</b>	thuishaven@devalk.nl

## DISCLAIMER

These particulars are given in good faith as supplied but cannot be guaranteed.



## GENERAL

Model	WHARRAM TIKI 38
Type	catamaran sailing yacht
LOA (m)	11,80
Beam (m)	6,40
Draft (m)	0,80
Air draft (m)	12,20
Year built	2016
Builder	Andrea Rossetti's LWB shipyard
Country	Italy
Designer	James Wharram
Displacement (t)	6,5
CE norm	B
Hull material	wood epoxy
Hull colour	off-white
Hull thickness (mm)	10
Superstructure material	GRP
Deck material	GRP
Deck finish	teak
Superstructure deck finish	teak
Antifouling (year)	Augustus 2023
Dorades	yes
Window frame	aluminium
Window material	glass
Portholes	yes
Fuel tank (litre)	88
Fuel tank 2 (litre)	88
Freshwater tank (litre)	X4 tanks (88 liters each) = 350L
Wheel steering	hydraulic Raymarine reversible 12V hydraulic pump
Outside helm position	hydraulic Raymarine reversible 12V hydraulic pump



## Extra info

Construction of the catamaran started around 2007/2008 but was not completed until much later. Finished in 2016 and then launched and started sailing

## ACCOMMODATION

Cabins	3
Berths	5
Interior	oak
Floor	wood
Headroom saloon (m)	2
Chart table	yes
Dinette to convert into berth	Into a double bed
Galley	yes
Sink	yes
Cooker	calor gas
Fridge	yes
Owners cabin	double bed
Bed length (m)	2,10
Wardrobe	shelves
Bathroom	en suite
Toilet	en suite
Toilet system	electric
Wash basin	in the bathroom
Guest cabin 1	single bed
Bed length (m)	2,10
Wardrobe	shelves
Guest cabin 2	single bed
Bed length (m)	2,10
Wardrobe	shelves

## MACHINERY



<b>No of engines</b>	2
<b>Make</b>	Lombardini
<b>HP</b>	18
<b>kW</b>	13.25
<b>Fuel</b>	diesel
<b>Year installed</b>	2015
<b>Consumption (l/hr)</b>	2,5
<b>Drive</b>	sail-drive
<b>Saildrive seal</b>	yes
<b>Engine controls</b>	yes
<b>Gearbox</b>	yes
<b>Batteries</b>	AGCM battery pack for engine
<b>Service battery</b>	yes
<b>Battery charger</b>	SBC 500 12V 40A battery charger
<b>Wind generator</b>	Silentwind 400 wind generator (defect)
<b>Solar panel</b>	Semi-rigid, 2 of 110W (Victro Energy 75/10 Bluetooth regulator)

## NAVIGATION

<b>Compass</b>	yes
<b>Depth sounder</b>	yes
<b>VHF</b>	2x Raymarine Ray60E
<b>Autopilot</b>	Raymarine EV-400 with EV-01 sensor, p70 color control unit
<b>Rudder angle indicator</b>	yes
<b>Radar</b>	Raymarine RD418 HD, 18" diameter color digital antenna
<b>GPS</b>	With 600W sonar module
<b>Plotter</b>	Raymarine Axiom 9" PRO RVX with Navionics cartography
<b>AIS receiver</b>	yes
<b>AIS transponder</b>	Raymarine AIS650, class B with Raymarine AIS100 antenna splitter
<b>AIS transceiver</b>	yes
<b>EPIRB</b>	yes



Navigation lights	yes
Extra info	Sound signal

## EQUIPMENT

Cockpit cover	yes
Sun awning	yes
Cockpit cushions	yes
Gangway	yes
Deck shower	yes
Anchor	Rocna, 20kg
Anchor chain	40m of 10mm + extension rope
Windlass	electrical Lofrans Tigres
Windlass aft	Lofrans Tigres
Sea railing	yes
Grab rail (superstructure)	yes
Life raft	yes
Lifejackets	yes
Lifebuoy	yes
Horn	yes
Fenders	yes
Mooring lines	yes
Fire extinguisher	yes
Extinguisher in engine room	yes
Extra info	A net is placed in the bow area between the two hulls

## RIGGING

Brand mast	yes
Material mast	aluminium
Spreaders	yes
Mainsail	North Sails - lazy jack, 3x reefing lines, 5x long battens 29,5 & 24,7sqm dacron triradial, Antal life rail system



<b>Mainsail cover</b>	yes
<b>Mizzen</b>	yes
<b>Mizzen sailcover</b>	yes
<b>Jib</b>	UV protection, Bamar C1 furler Furling jib, 21,9sqm, triradial dacron, leaner for furled use
<b>Gennaker</b>	50sqm, triradial in nylon, complete with "snuffer" sock
<b>Reefing System</b>	yes
<b>Boomvang</b>	yes
<b>Primary sheet winch</b>	yes
<b>Secondary sheet winch</b>	yes
<b>Genoa sheetwinches</b>	yes
<b>Multifunctional winches</b>	yes











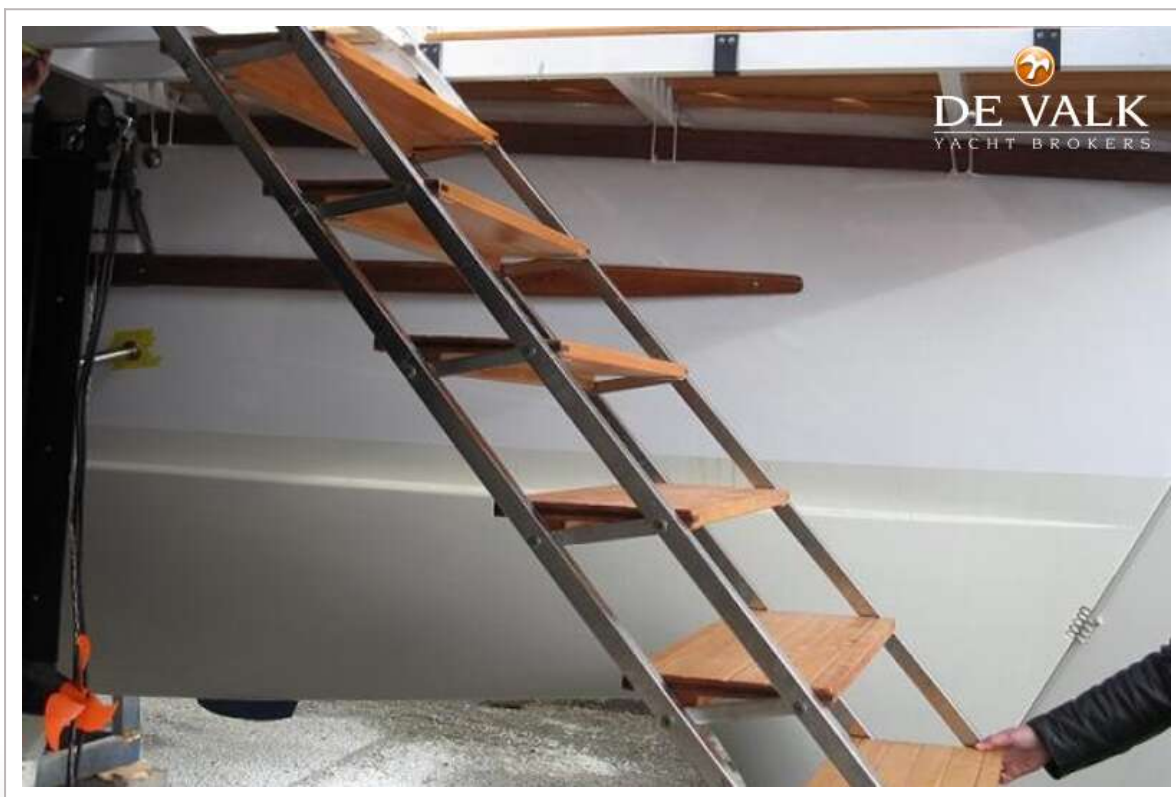


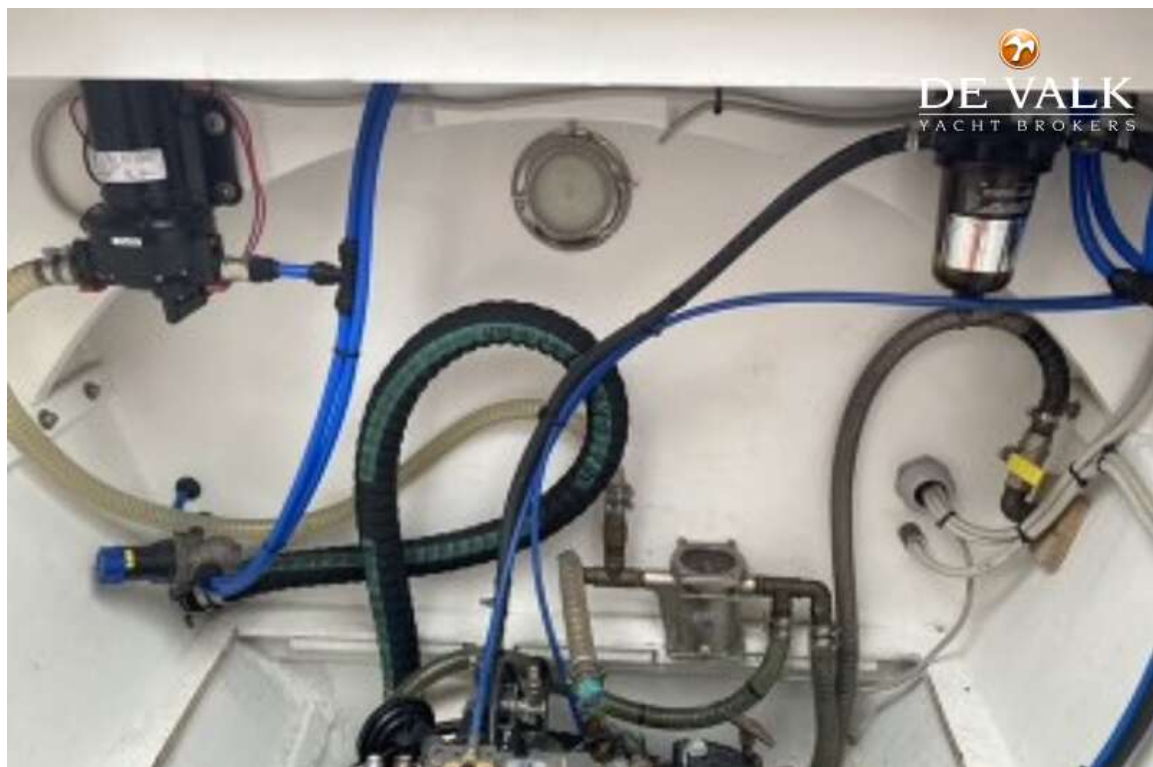
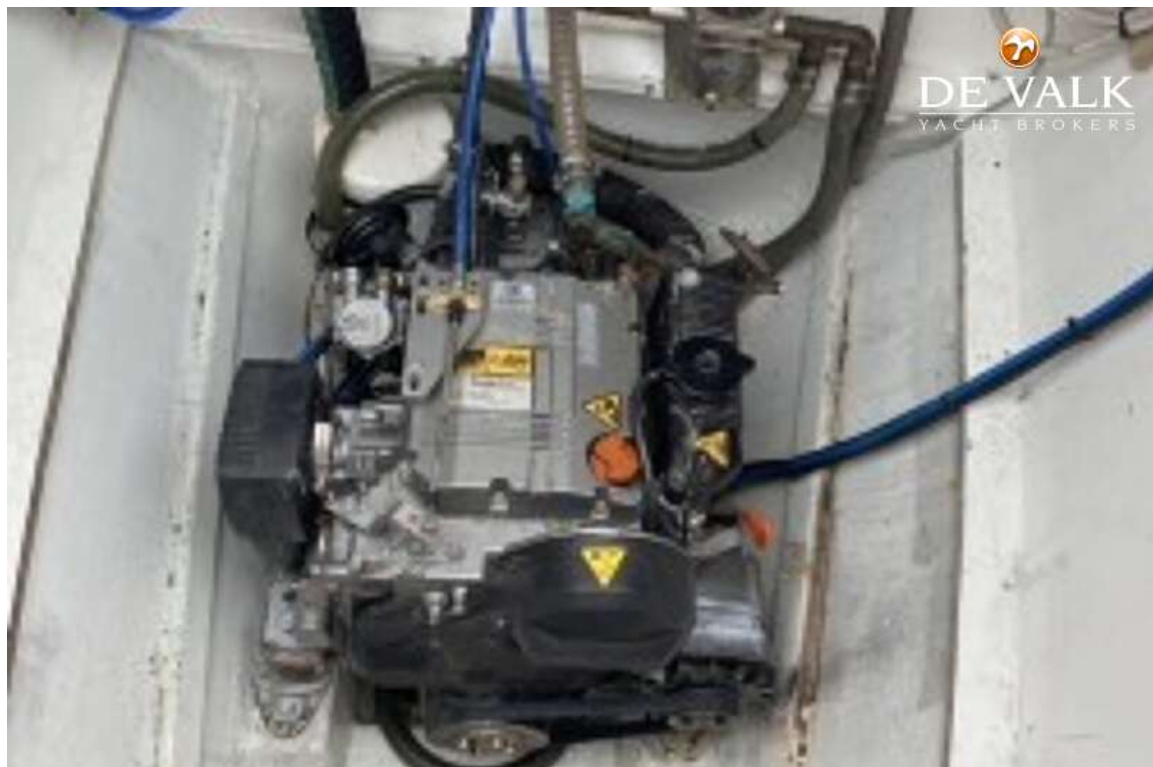






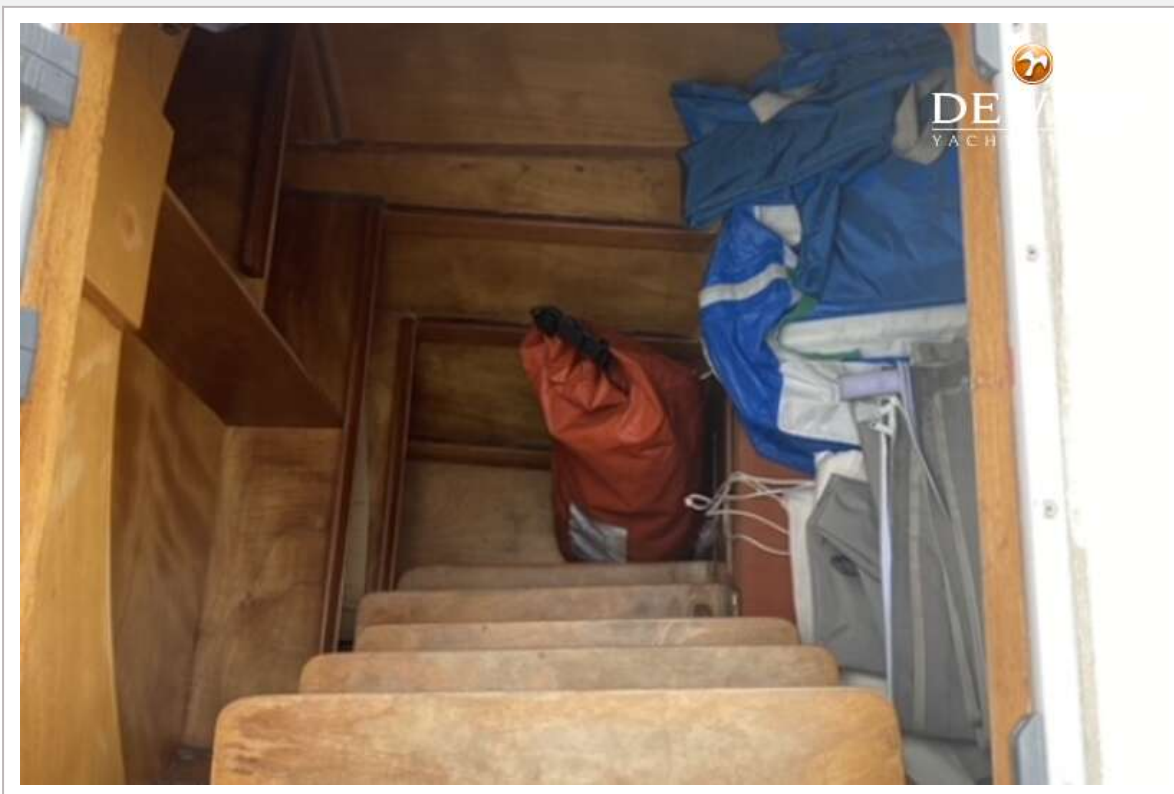




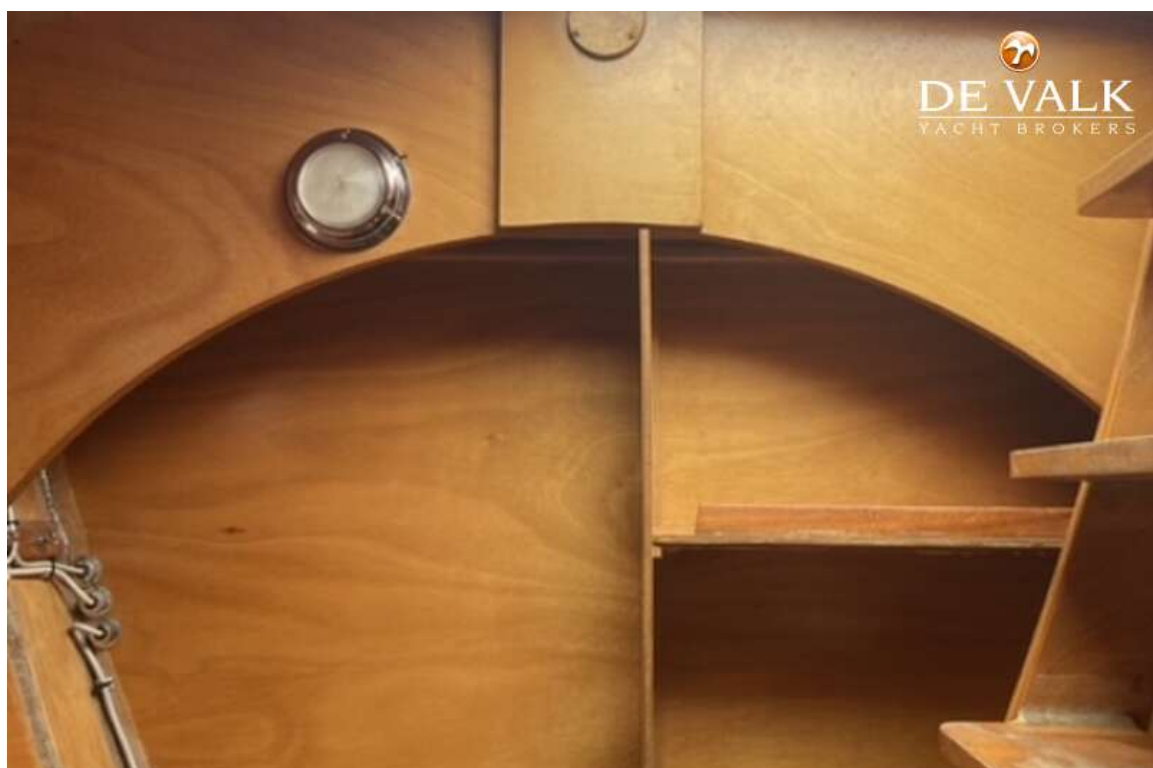
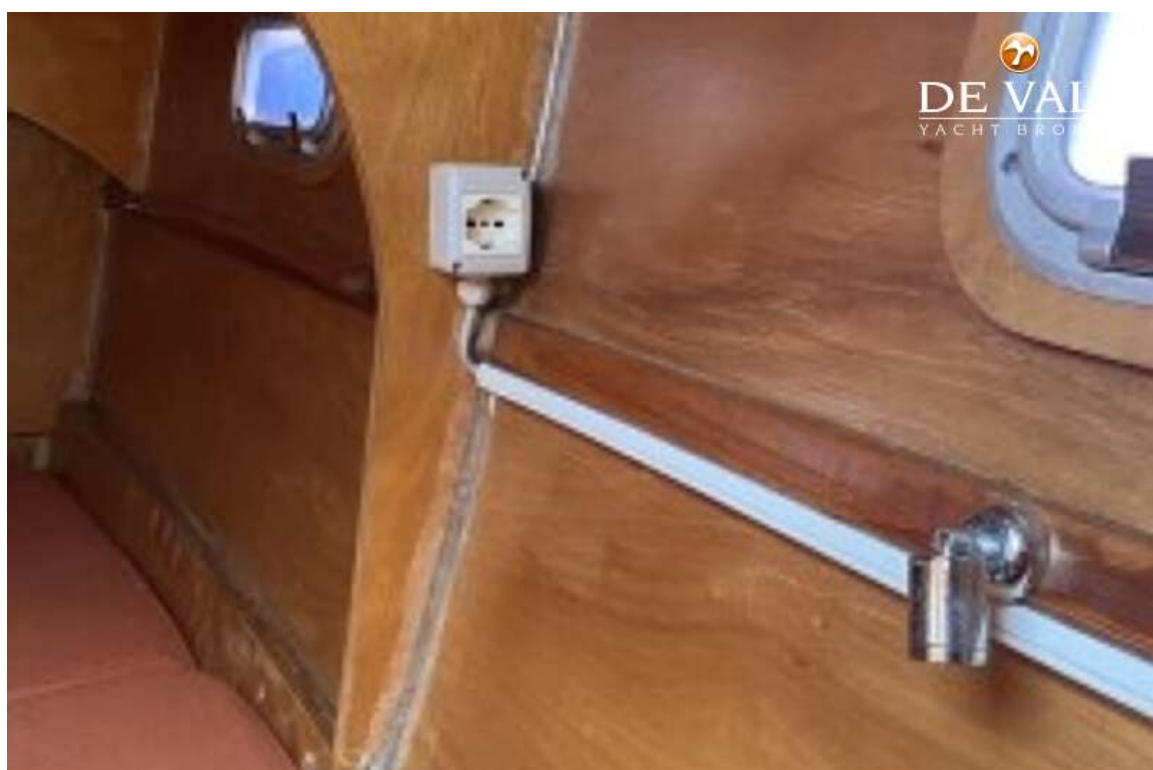








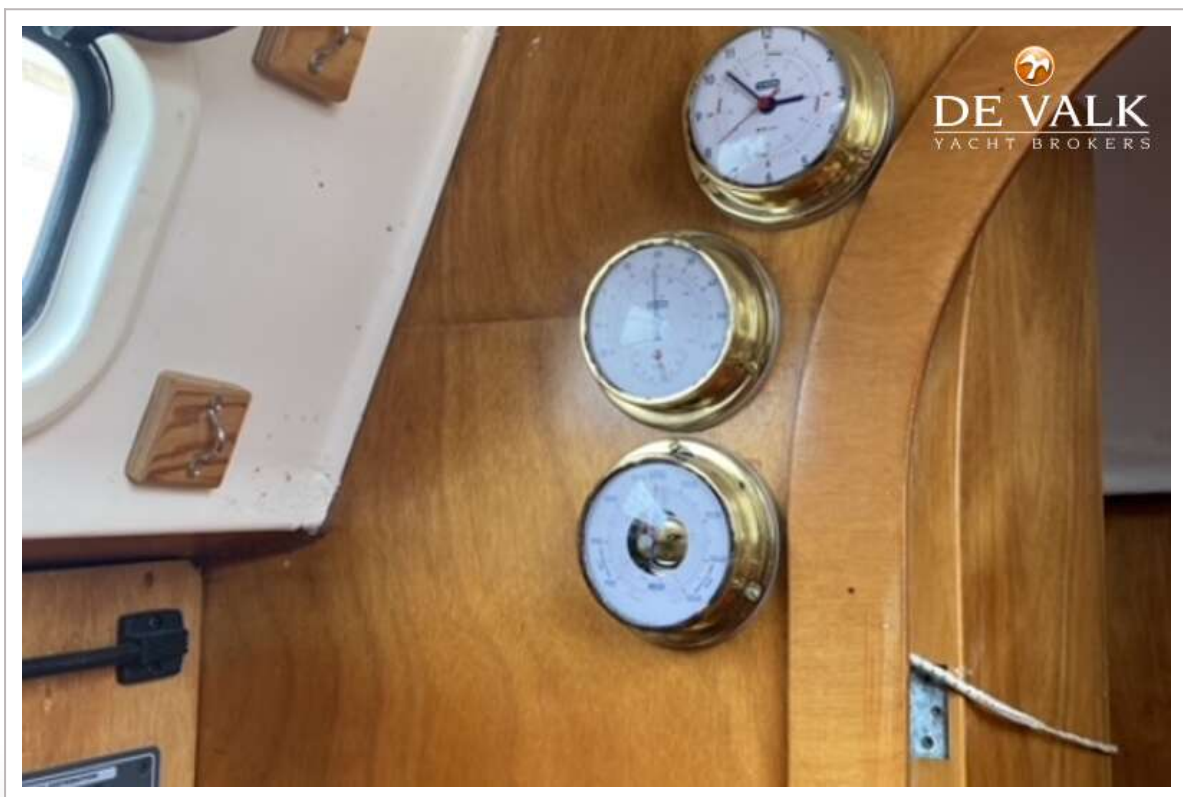






## WHARRAM TIKI 38







## WHARRAM TIKI 38

