



DE VALK  
YACHT BROKERS



LUXE MOTOR 18.30



DE VALK  
YACHT BROKERS

BROKERAGE | CHARTER | BERTHS | FINANCE | INSURANCE | YACHT MANAGEMENT

# LUXE MOTOR 18.30

## BROKER'S COMMENTS

Uniquely built Luxe Motor 18.30 named "Navio" with a hull from 2007 and high quality interior paneling from 2021. This Luxe Motor 18.30 is fully equipped and is therefore extremely suitable for a longer stay on board or even permanent residence. Due to her ideal dimensions, the "Navio" is extremely suitable for cruising the inland waterways of Europe as well as certainly the French canals. All technology on board was purchased in 2018 and put into operation in 2021 as well as the complete interior paneling. The "Navio" is lying ready for the second owner!

*Jochem Heijermans*

## SPECIFICATIONS

<b>Dimensions</b>	18.30 x 4.85 x 1.15 (m)	<b>Builder</b>	Navimar B.V.
<b>Built</b>	2007	<b>Cabins</b>	3
<b>Material</b>	Steel	<b>Berths</b>	6
<b>Engine(s)</b>	1 x John Deere 6068 TFM 75 diesel	<b>Hp/Kw</b>	200.00 (hp), 147.20 (kw)
<b>Asking price</b>	sold (VAT )	<b>Lying</b>	elsewhere / Not at sales office

## CONTACT

<b>Sales office</b>	De Valk Belgium	<b>Telephone</b>	+32 586 80 218
<b>Address</b>	1401 PT Nieuwpoort BE	<b>E-mail</b>	belgium@devalk.nl

## DISCLAIMER

These particulars are given in good faith as supplied but cannot be guaranteed.



## GENERAL

Model	LUXE MOTOR 18.30
Type	motor yacht
LOA (m)	18,30
Beam (m)	4,85
Draft (m)	1,15
Air draft (m)	4,50
Air draft min (m)	3,30
Headroom (m)	2,00
Year built	2007
Builder	Navimar B.V.
Country	The Netherlands
Designer	Navimar B.V.
Displacement (t)	35
Hull material	steel
Hull colour	black
Hull thickness (mm)	6
Hull shape	round-bilged
Superstructure material	steel
Superstructure (mm)	5
Rubbing strake	stainless steel
Deck material	steel
Deck finish	paint
Superstructure deck finish	paint
Cockpit deck finish	paint
Window frame	aluminium 2019
Window material	double glazing 2019
Deckhatch	yes
Portholes	aluminium Double glazing (2019)
Insulation	glasswool (2019)
Radar arch	collapsible 2019



<b>Mast can be lowered</b>	manual Radar bracket and antennas hydraulically foldable (2019)
<b>Fuel tank (litre)</b>	steel Circa 1250 cleaned 2021
<b>Fuel tank 2 (litre)</b>	steel Circa 1250 cleaned 2021
<b>Level indicator (fuel tank)</b>	Mastervolt
<b>Fuel daytank (litre)</b>	steel
<b>Level indicator (daytank)</b>	Arrow glass
<b>Freshwater tank (litre)</b>	polyethylene 4 tanks total 2100l (2019)
<b>Level indicator (freshwater)</b>	Mastervolt (2021)
<b>Wheel steering</b>	hydraulic (2015)
<b>More info on paintwork</b>	Hull and superstructure painted (2019)

## ACCOMMODATION

<b>Cabins</b>	3
<b>Berths</b>	6
<b>Interior</b>	cherry (2021)
<b>Floor</b>	carpet + wood (2021)
<b>Aft deck</b>	yes
<b>Headroom saloon (m)</b>	2
<b>Heating</b>	floor heating Kabola 29KW (2019) each space separately adjustable
<b>Dinette</b>	yes
<b>Opening door to aft deck</b>	yes
<b>Galley</b>	(2021)
<b>Countertop</b>	plastic (2021)
<b>Sink</b>	stainless steel (2021)
<b>Cooker</b>	induction AEG (2021)
<b>Extractor</b>	yes
<b>Microwave/oven combi</b>	Invectum (2021)
<b>Fridge</b>	2x Pelgrim (2021)
<b>Freezer</b>	AEG (2021)
<b>Hot water system</b>	on central heating



Water pressure system	electrical
Dishwasher	yes
Owners cabin	double bed
Bed length (m)	2.00
Wardrobe	hanging/drawers/shelves
Bathroom	shared (2021)
Toilet	shared
Toilet system	electric
Wash basin	in the bathroom
Shower	shared
Guest cabin 1	double bed
Bed length (m)	2.00
Wardrobe	hanging and shelves
Guest cabin 2	double bed
Bed length (m)	2.00
Wardrobe	hanging and shelves
Washing machine	AEG 8000 Series (2021)
Dryer	AEG 6000 Series (2021)

## MACHINERY

No of engines	1
Make	John Deere
Type	6068 TFM 75
HP	200
kW	147.20
Fuel	diesel
Year installed	2018
Maximum speed (kn)	9
Cruising speed (kn)	7
Engine hours	620
Engine cooling system	hopper cooling (2018)



# LUXE MOTOR 18.30

Drive	shaft
Engine controls	electrical (2018)
Gearbox	hydraulic
Bowthruster	electric 11KW (2018)
Exhaust	dry
Thrust bearing	yes
Propeller type	fixed
Propeller shaft material	stainless steel
Shaft lubrication	water
Electric bilge pump	yes
Generator	Whisper 12 Ultra (2018)
Running hours generator	Circa 35
Batteries	(2021)
Start battery	2x 24V/140 Ah (2021)
Service battery	24V/1000Ah (2021)
Generator battery	12V (2021)
Battery monitor	Mastervolt
Battery charger/inverter	2x Mastervolt Mass Combi Pro 24V/3500W/100Ah (2021)
Solar panel	6x (2021)
Shorepower	with cable
Insulation transformer	Mastervolt
Extra info	2x spud poles approx. 4m

## NAVIGATION

Depth sounder	Garmin (2021)
VHF	2x Sailor (2021)
Autopilot	A. Van der Velden ECP 500 (2021)
Rudder angle indicator	A. Van der Velden ECP 500 (2021)
Radar	Garmin (2021)
Radar/GPS	PC-NAVIGO (2021)
Radar/GPS/plotter	Garmin (2021)



Personal computer	(2021)
AIS transceiver	ICOM CLASS B MA-510TR
Navigation lights	yes

## EQUIPMENT

Fixed windscreen	yes
Cockpit cushions	(2021)
Anchor chain	(2018)
Anchor chain	yes
Windlass	electrical Lofrans (2021)
Capstan	yes
Deck wash	yes
Grab rail (superstructure)	stainless steel
Wiper	(2021)
Horn	electric
Fenders	yes
Mooring lines	yes
TV	Sharp electric lift (2021)
TV receiver	Travelvision satellite receiver
Radio	(2021)
Speakers in salon	(2021)
Fire extinguisher	yes









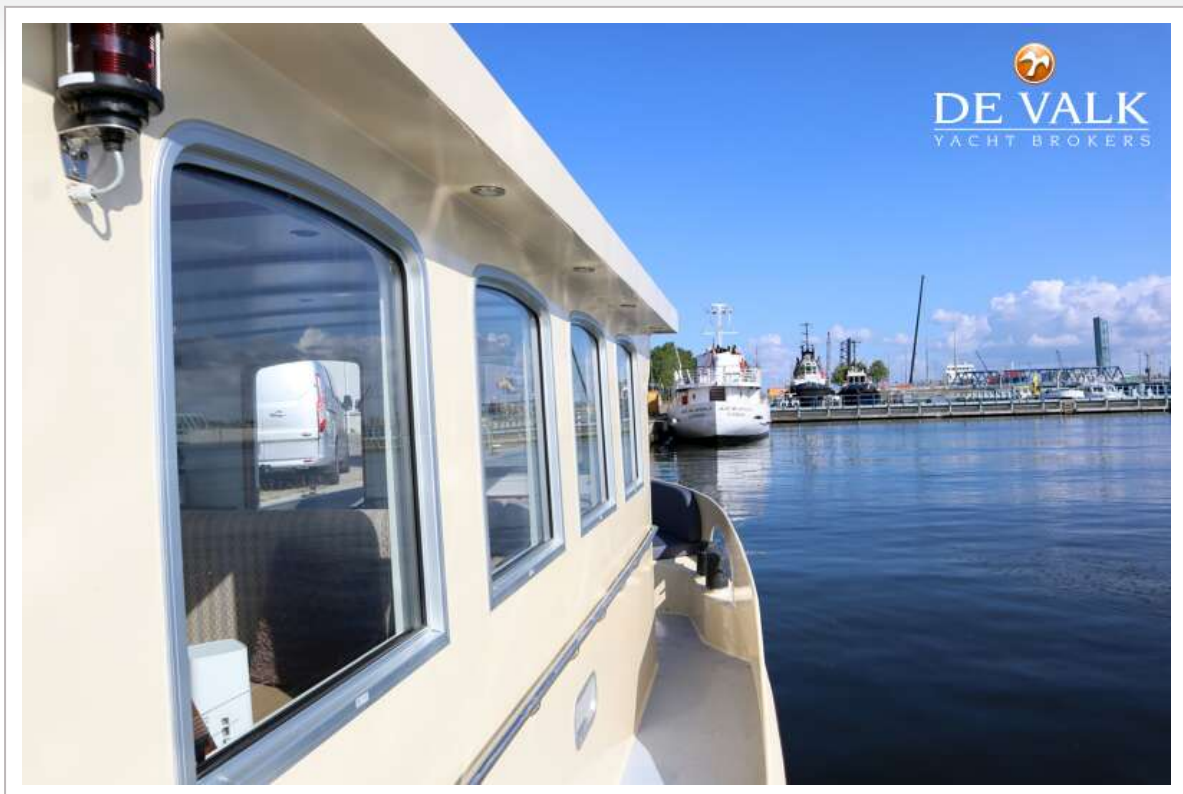
## LUXE MOTOR 18.30





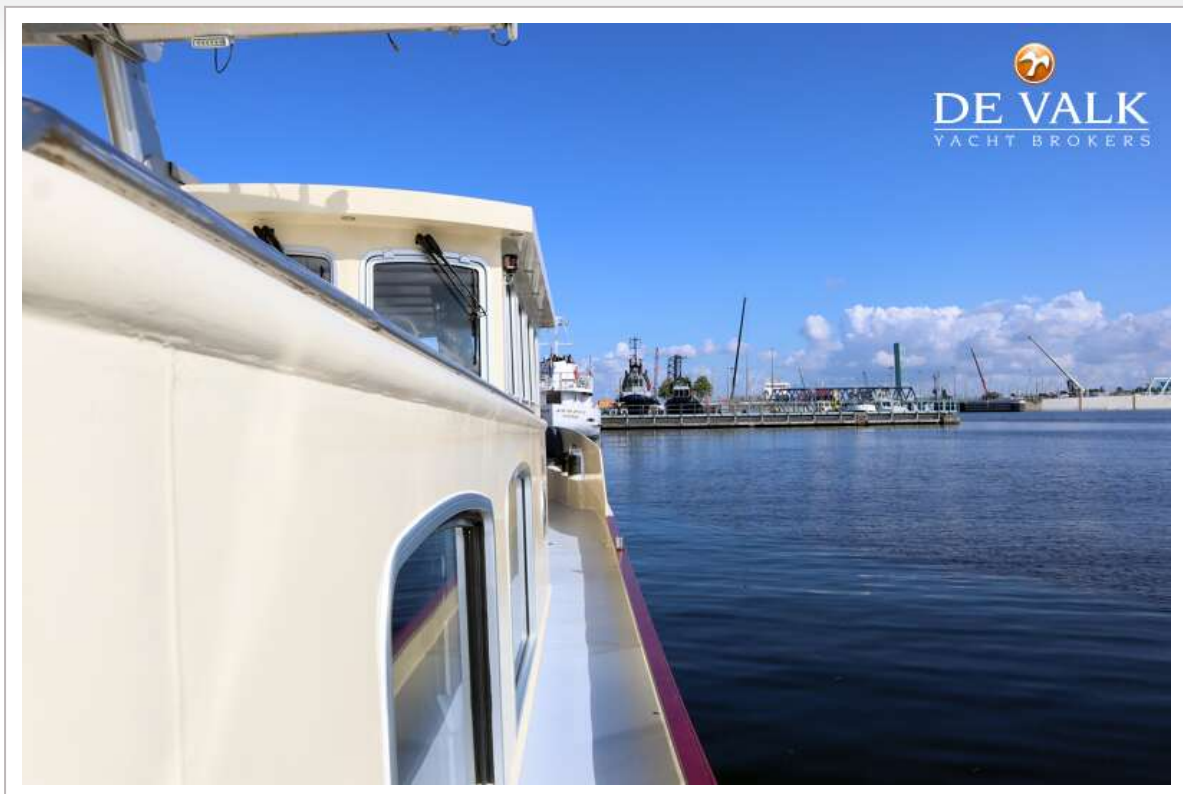






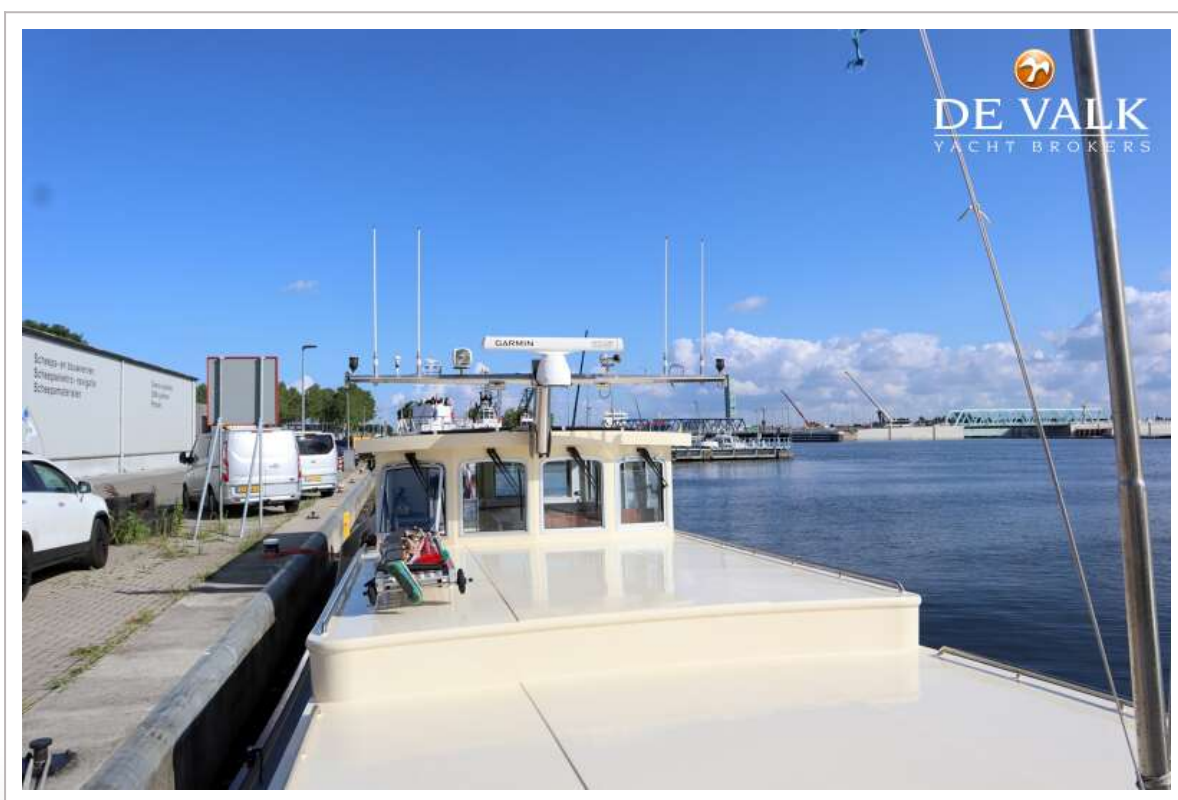






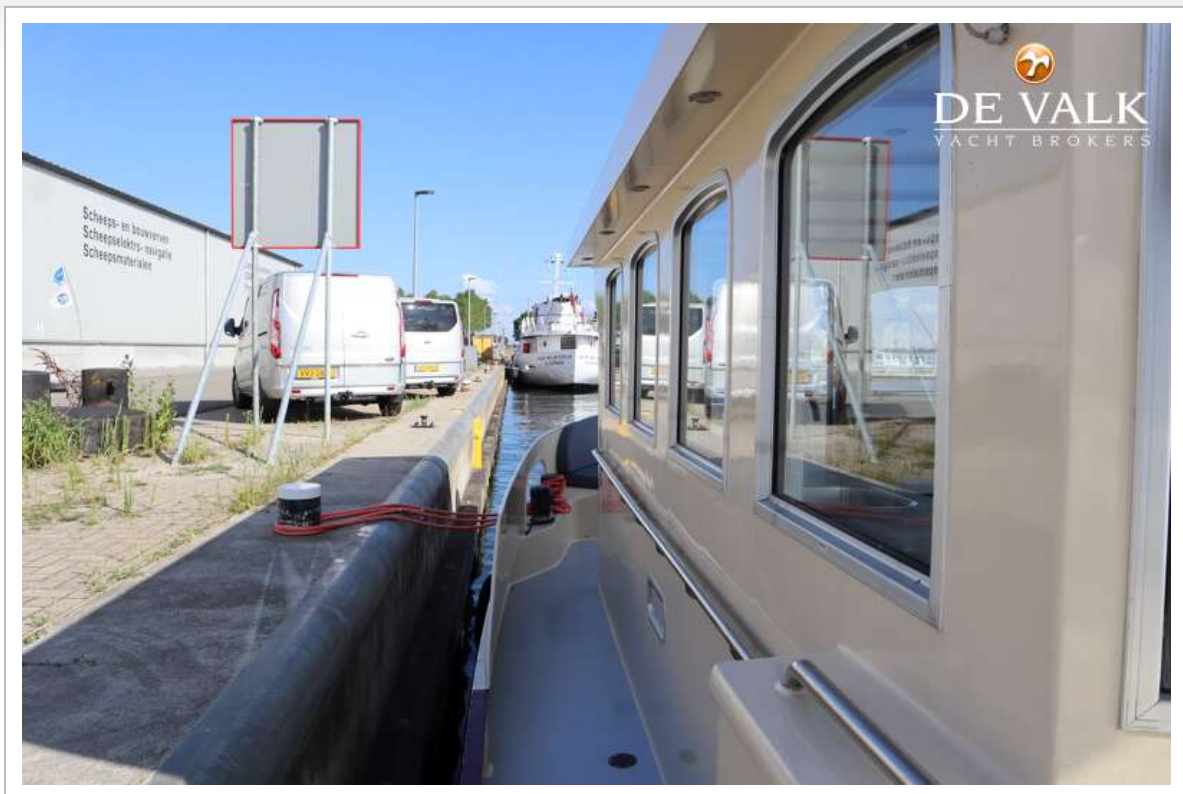


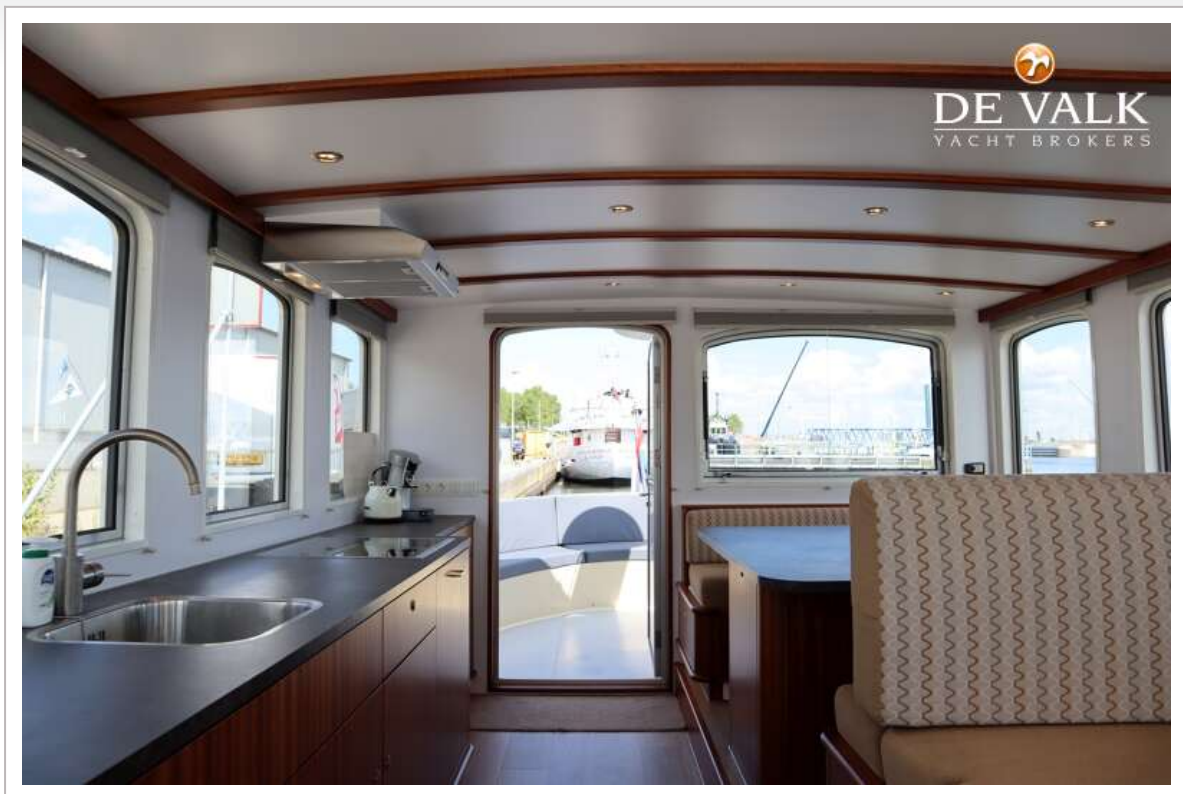
## LUXE MOTOR 18.30



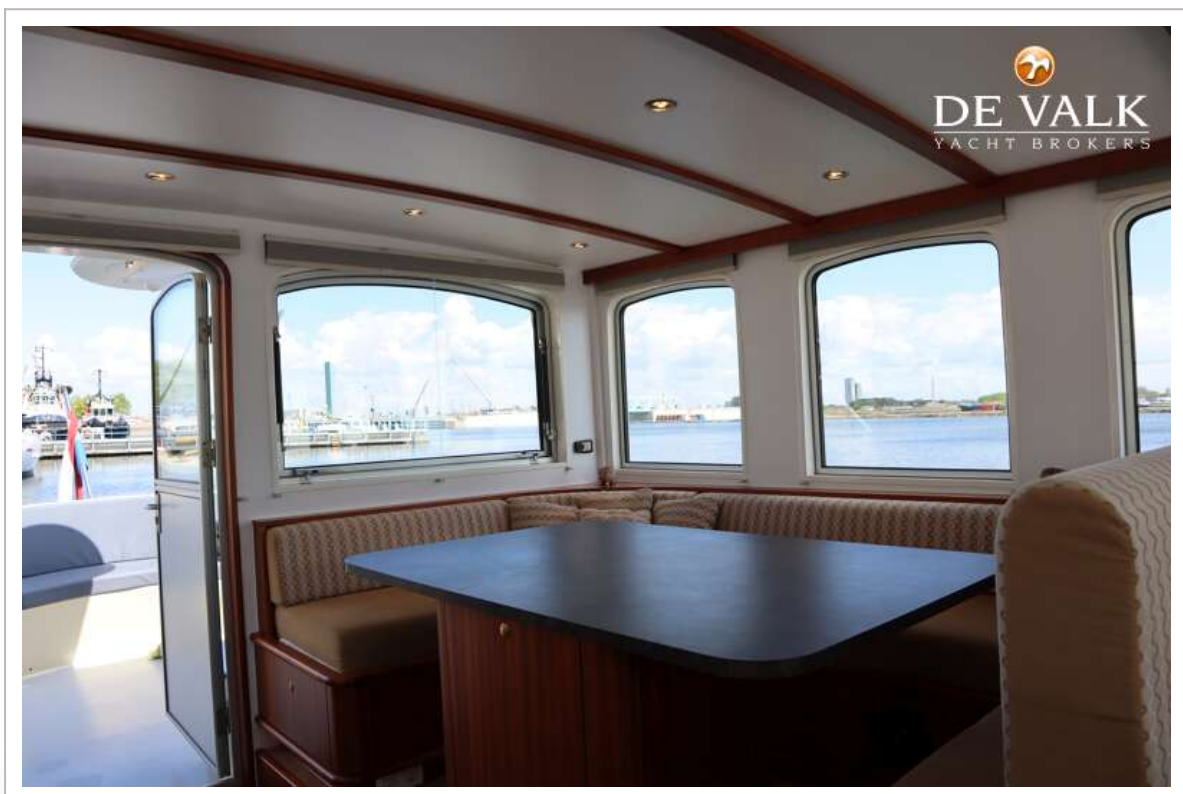


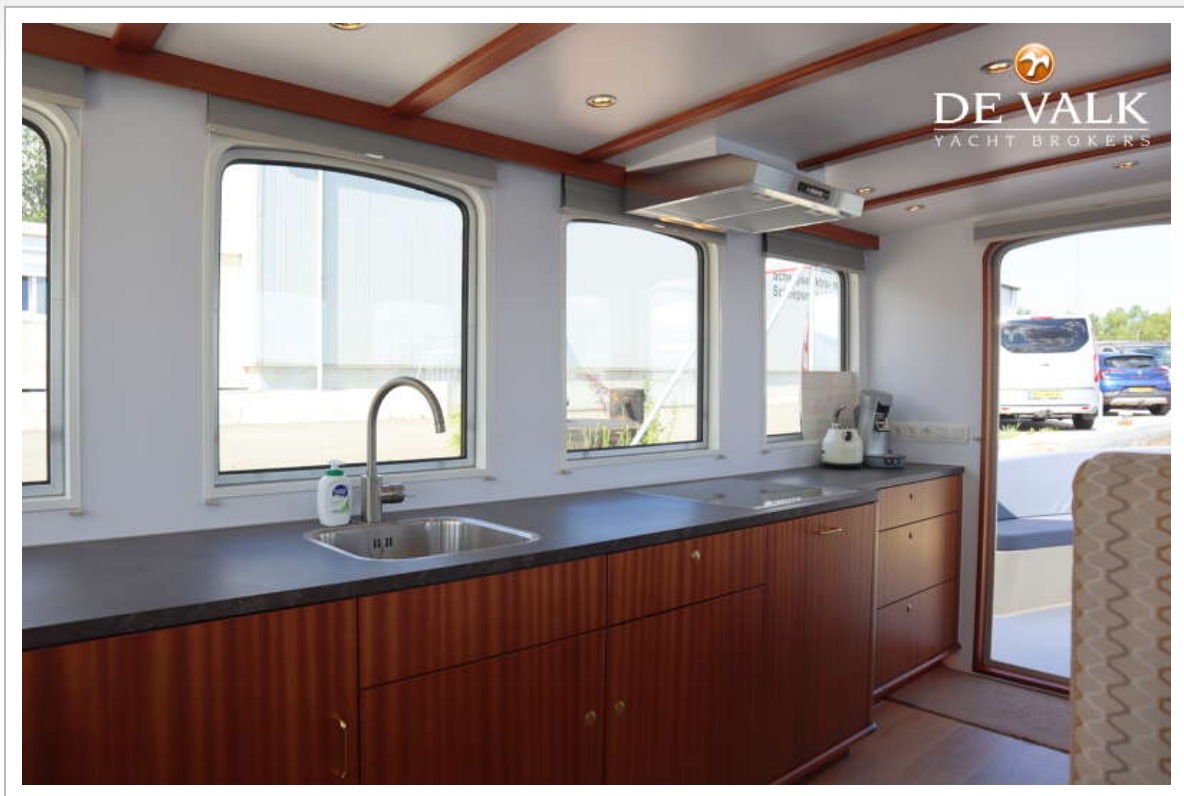










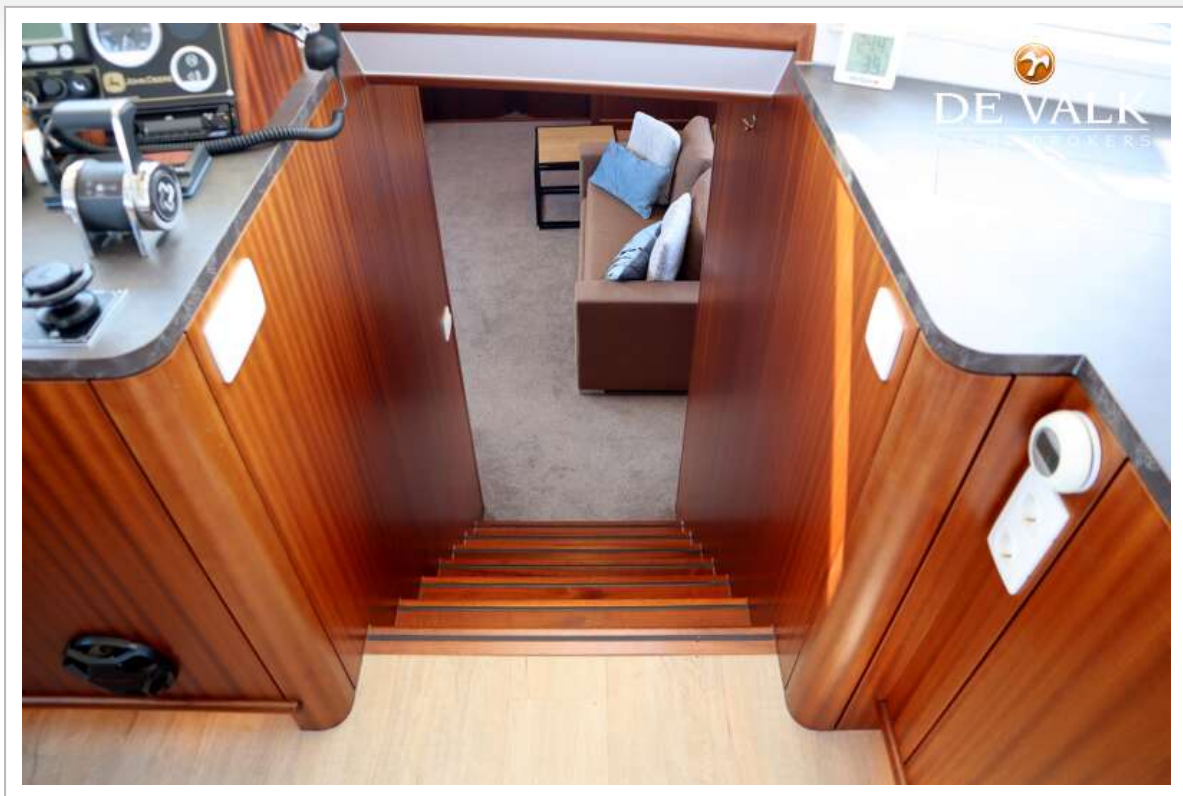




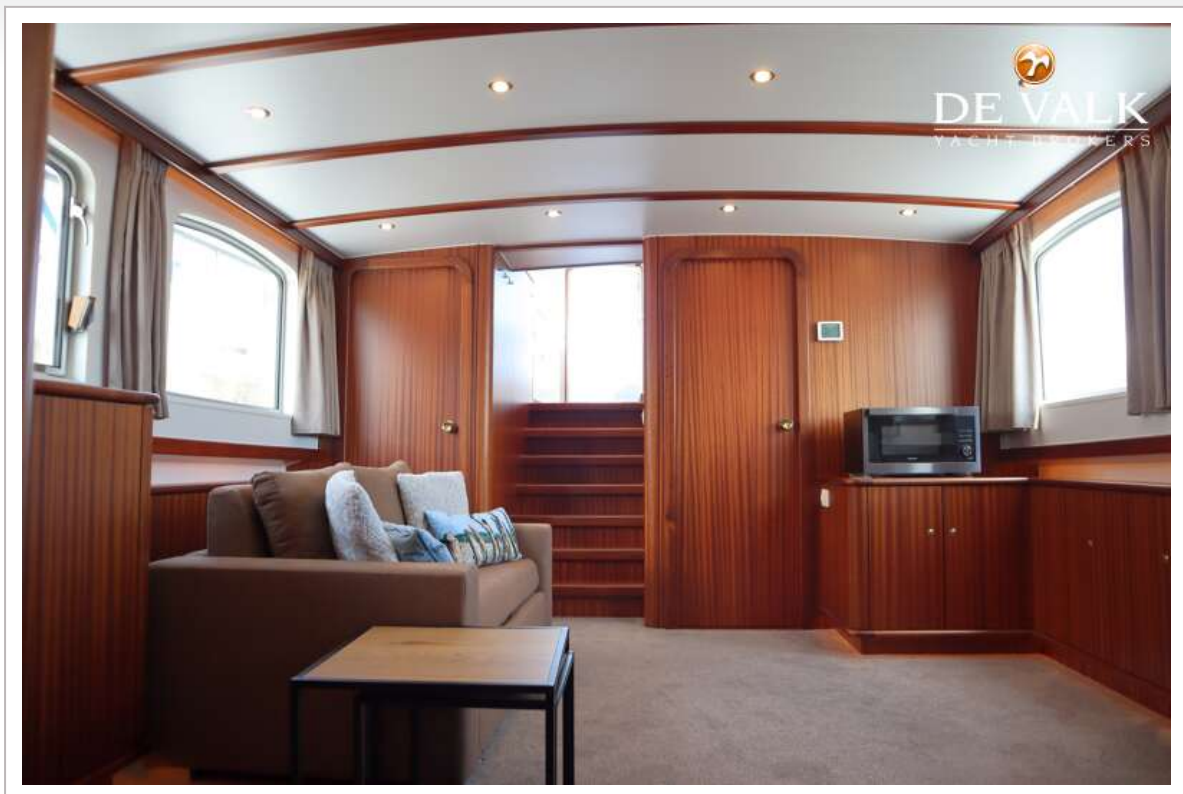
## LUXE MOTOR 18.30



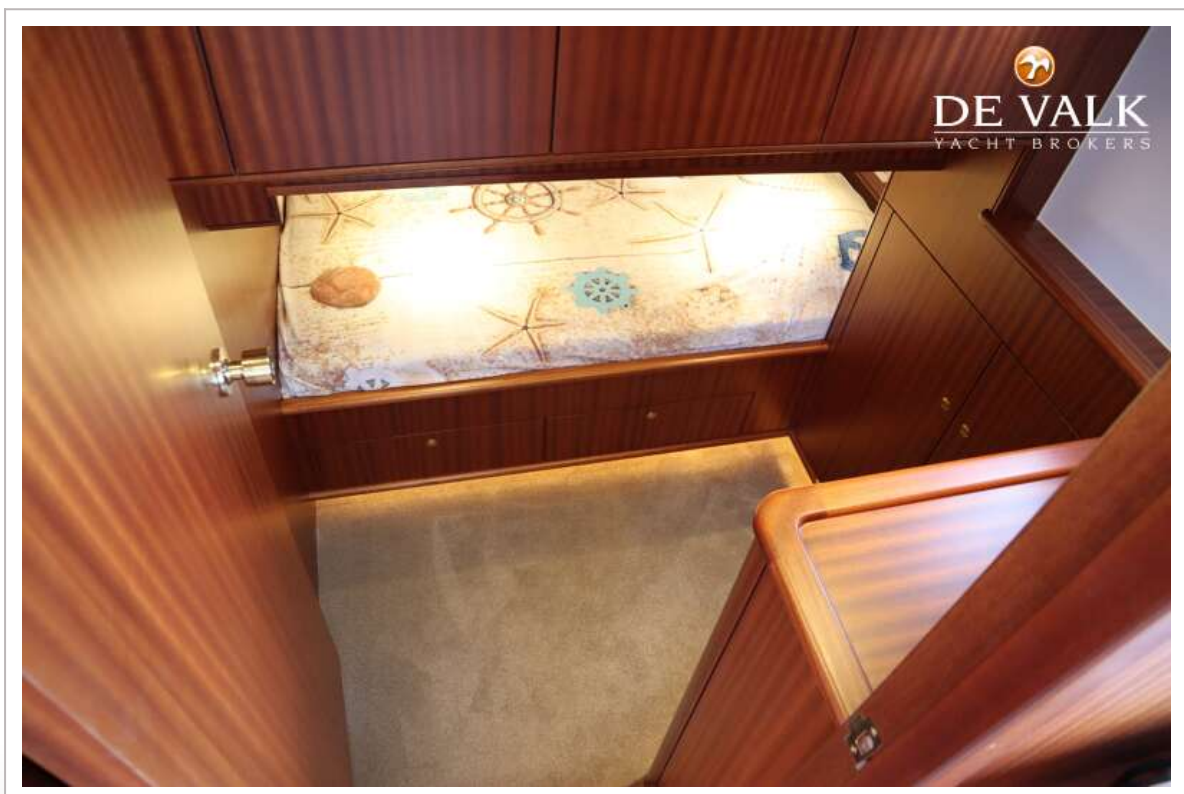
## LUXE MOTOR 18.30



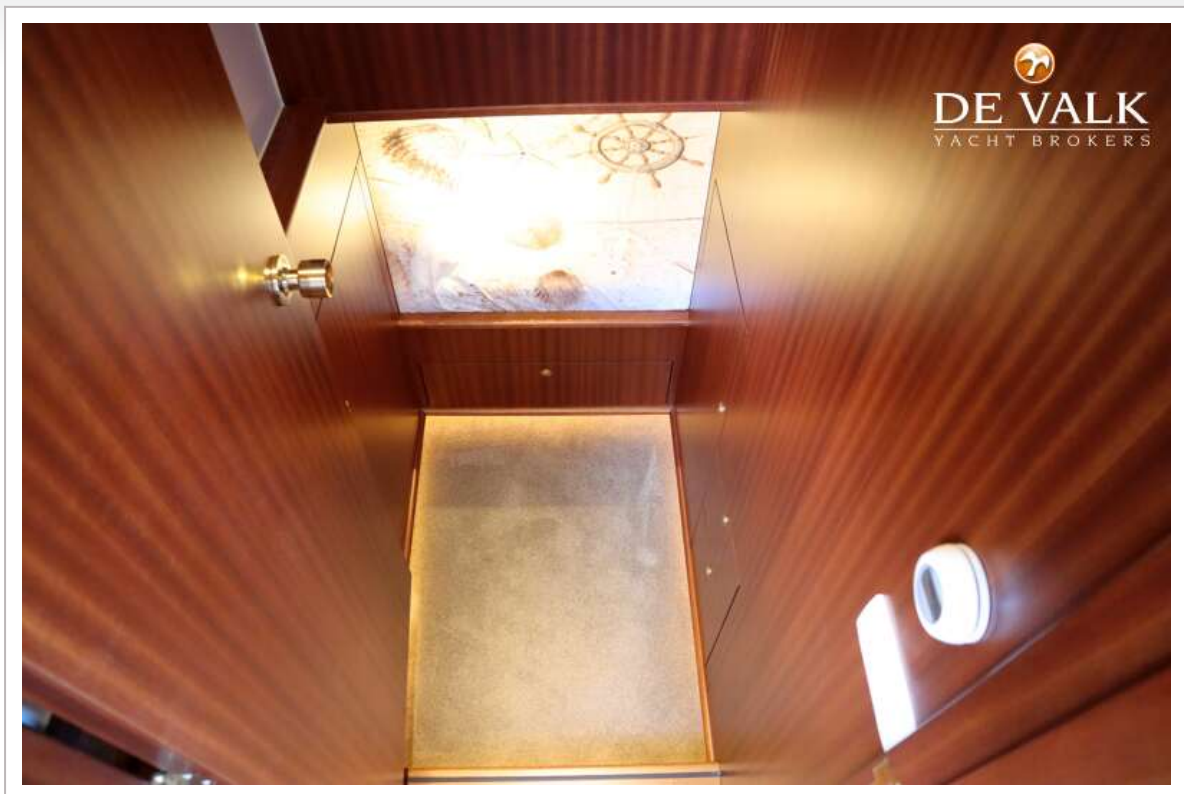






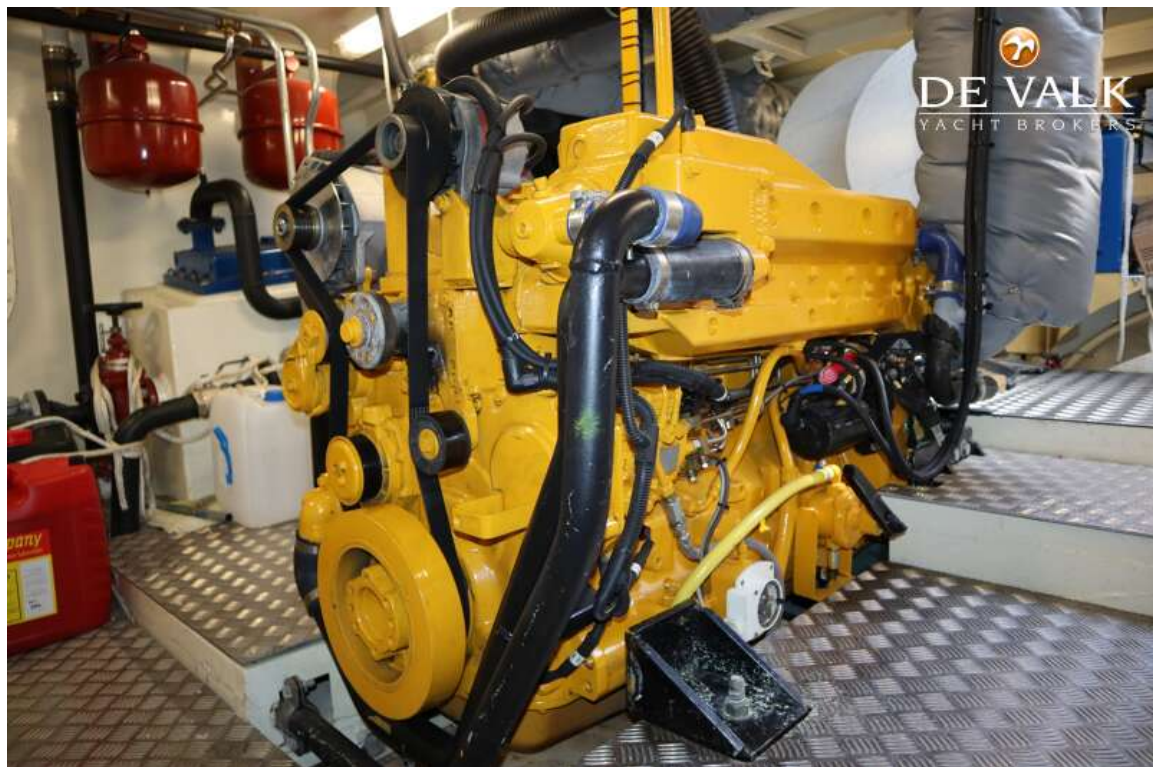








## LUXE MOTOR 18.30



## LUXE MOTOR 18.30

