



## BENETEAU OCEANIS 58

# BENETEAU OCEANIS 58

## BROKER'S COMMENTS

This Beneteau Oceanis 58 is in a good condition and has a shallow draft of 1.70 mtr.! We sell this yacht for her first and only owner. This Beneteau Oceanis 58 is very luxurious, including 3 spacious cabins, dishwasher and washing machine, spacious cockpit with swim platform and the necessary navigation equipment for a comfortable stay on board. The extensive list of specifications and USP can be requested from the yachtbroker. This very nice Beneteau Oceanis 58 is ready to sail with her new owner and can be viewed immediately on appointment!

*Johan Schootstra*

## SPECIFICATIONS

<b>Dimensions</b>	18.24 x 4.99 x 1.70 (m)	<b>Builder</b>	Beneteau
<b>Built</b>	2012	<b>Cabins</b>	3
<b>Material</b>	GRP	<b>Berths</b>	8
<b>Engine(s)</b>	1 x Volkswagen 140-5 diesel	<b>Hp/Kw</b>	140.00 (hp), 103.04 (kw)
<b>Asking price</b>	sold (VAT )	<b>Lying</b>	at sales office

## CONTACT

<b>Sales office</b>	De Valk Hindeloopen B.V.	<b>Telephone</b>	+31 514 52 40 00
<b>Address</b>	Oosterstrand 1 8713 JS Hindeloopen NL	<b>E-mail</b>	hindeloopen@devalk.nl

## DISCLAIMER

These particulars are given in good faith as supplied but cannot be guaranteed.



## GENERAL

Model	BENETEAU OCEANIS 58
Type	sailing yacht
LOA (m)	18,24
LWL (m)	16,43
Beam (m)	4,99
Draft (m)	1,70
Air draft (m)	21,50
Year built	2012
Builder	Beneteau
Country	France
Designer	Berret Racoupeau / Nauta Design
Displacement (t)	21,6
Ballast (tonnes)	7.1
CE norm	A
Hull material	GRP
Hull colour	white
Hull shape	round-bilged
Keel type	fin keel
Superstructure material	GRP
Rubbing strake	Teak with stainless steel strip
Deck material	GRP
Deck finish	teak
Superstructure deck finish	non-skid moulded in
Cockpit deck finish	teak
Deckhatch	8x
Portholes	yes
Fuel tank (litre)	polyethylene   4 tanks   total 1080 ltr.
Level indicator (fuel tank)	yes
Freshwater tank (litre)	polyethylene   960 ltr.
Level indicator (freshwater)	yes



Blackwater tank (litre)	polyethylene   3x 60 ltr.
Blackwater tank extraction	deck extraction + pump
Wheel steering	cable steering 2x
Emergency tiller	yes

## ACCOMMODATION

Cabins	3
Berths	8
Crew cabin	Yes, is now storage room
Interior	Alpi Mahogany
Floor	Parquet type Laminated
Open cockpit	yes
Saloon	yes
Headroom saloon (m)	2.05 mtr.
Navigation center	yes
Chart table	yes
Aft Cabin	2 cabins with private shower and toilet
Sliding door to cockpit	Electric
Galley	yes
Countertop	corian
Sink	stainless steel   Double
Cooker	calor gas   3 burner   Techimpex
Oven	In cooker
Extractor	yes
Microwave	Eno
Fridge	1x Vitfrigo 100 lt. toploader 1x Vitfrigo 133 lt. frond loader
Freezer	In fridge
Wine cooler	1x Vitfrigo RF series drawer
Hot water system	220V + engine   Quick B3
Water pressure system	electrical
Dishwasher	Electrolux



Owners cabin	French bed   forward cabin
Bed length (m)	2.05 mtr.
Wardrobe	hanging/drawers/shelves
Bathroom	en suite
Toilet	Jabsco
Toilet system	electric
Wash basin	yes
Shower	yes
Guest cabin 1	double bed   starboard aft cabin   or twin single
Bed length (m)	2.05 mtr.
Wardrobe	hanging and shelves
Bathroom	en suite
Toilet	Jabsco
Toilet system	electric
Wash basin	yes
Shower	yes
Guest cabin 2	double bed   port aft cabin
Bed length (m)	2.05 mtr.
Wardrobe	yes
Bathroom	en suite
Toilet	Is also used as a day toilet
Toilet system	electric
Wash basin	yes
Shower	yes
Washing machine/dryer combi	Siemens wash & dry 1200

## MACHINERY

No of engines	1
Make	Volkswagen
Type	140-5
HP	140



# BENETEAU OCEANIS 58

<b>kW</b>	103.04
<b>Fuel</b>	diesel
<b>Year installed</b>	2012
<b>Maximum speed (kn)</b>	10,5
<b>Cruising speed (kn)</b>	8,5
<b>Engine cooling system</b>	freshwater heat exchanger
<b>Drive</b>	shaft
<b>Shaft seal</b>	yes
<b>Engine controls</b>	electrical   Hydronautica
<b>Gearbox</b>	hydraulic
<b>Bowthruster</b>	electric   MaxPower
<b>Exhaust</b>	watercooled
<b>Propeller type</b>	folding
<b>Propeller blades</b>	3
<b>Propeller shaft material</b>	stainless steel   spare shaft on board
<b>Shaft lubrication</b>	water
<b>Manual bilge pump</b>	yes
<b>Electric bilge pump</b>	yes
<b>Bilge alarm</b>	yes
<b>Electrical installation</b>	12 / 24 / 220 volt
<b>Generator</b>	wet exhaust   Cummins 9.5kvh
<b>Start battery</b>	1x 110Ah
<b>Service battery</b>	yes
<b>Bowthruster battery</b>	4x Optima 50Ah - 24V
<b>Battery monitor</b>	yes
<b>Battery charger</b>	2x Cristec 12 V - 25 Amp. 1x Cristec 24 V - 60 Amp.
<b>Inverter</b>	Mastervolt
<b>Solar panel</b>	Not connected
<b>Shorepower</b>	with cable

## NAVIGATION



Compass	2x Plastimo Olympic 135
Depth sounder	Data from : 3x Simrad IS20 Combi Display
Log	Data from : 3x Simrad IS20 Combi Display
Windset	Data from : 3x Simrad IS20 Combi Display
VHF	ICOM IC-M423
VHF handheld	ICOM IC-M91D
Autopilot	Simrad AP24 control unit
Radar	Simrad
Radar/GPS/plotter	Simrad NSS12 - at chart table Simrad NSS8 - outside Raymarine a67 MFD - outside
AIS transceiver	Simrad NAIS-400
EPIRB	GME AccuSat
Navigation lights	yes

## EQUIPMENT

Sprayhood	yes
Cockpit cover	specially made
Bimini	yes
Cockpit cushions	yes
Cockpit table	yes
Bathing platform	yes
Boarding ladder	yes
Deck shower	yes
Anchor	Delta   Stainless steel
Anchor chain	yes
Chain counter	Quick CHC 1202M
Windlass	electrical   Lewmar   24V - 2000W
Capstan	yes
Deck wash	yes
Outboard support	yes
Sea railing	stainless steel



Grab rail (superstructure)	stainless steel
Railing side opening gates	with ladder
Pushpit	yes
Pulpit	yes
Fenders	yes
Mooring lines	yes
TV	Samsung - with lifting system
Radio-cd player	Pioneer
Cockpit speakers	yes
Speakers in salon	Bose
Fire extinguisher	yes

## RIGGING

Rigging	sloop
Standing rigging	wire
Brand mast	Seldén
Material mast	aluminium
Spreaders	3 pair   aft swept spreaders
Keel stepped mast	yes
Mainsail	yes
Fully battened mainsail	yes
Stoway mast	yes
Jib	With cover
Genoa furler	Facnor LS290
Self tacking jib installation	yes
Reefing System	main in-mast furling
Boomvang	gasspring
Genoa sheetwinches	2x Harken 70   Electric   two speed
Multifunctional winches	2x Harken 46   Electric   two speed
Spi-pole	carbon
Extra info	Windex windvane



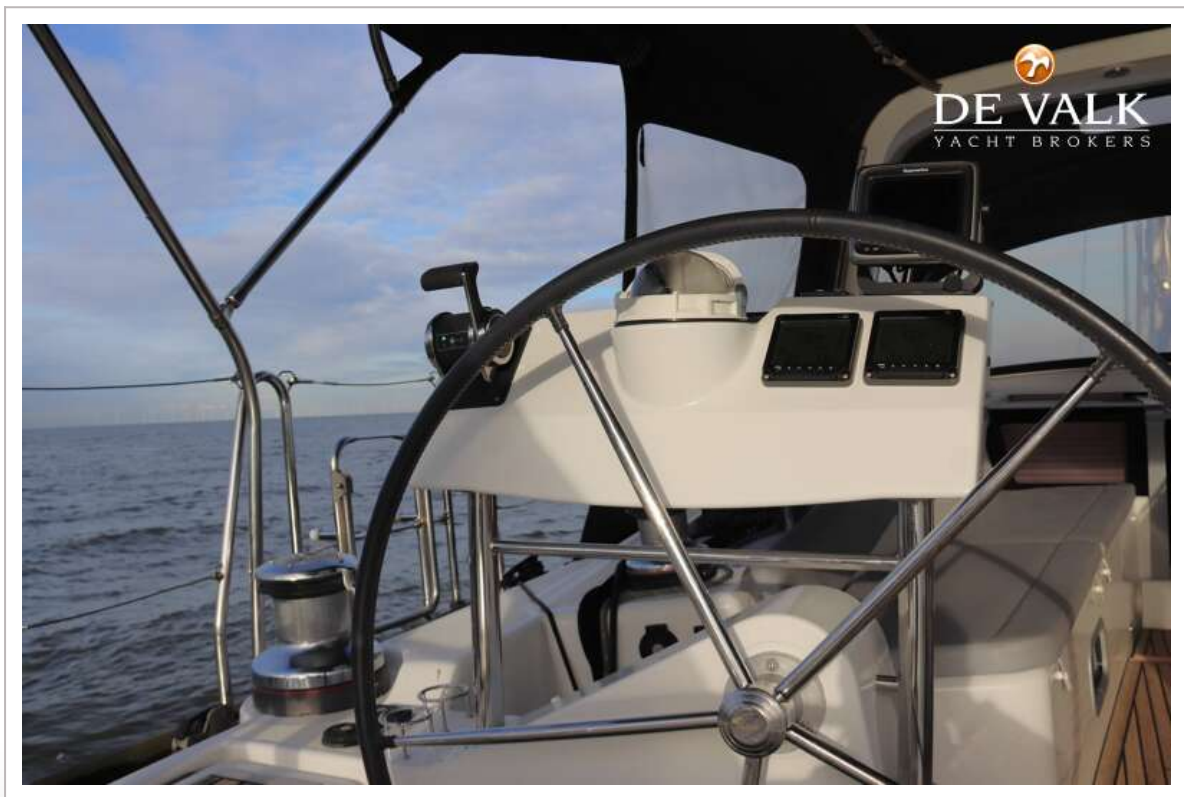




# BENETEAU OCEANIS 58



# BENETEAU OCEANIS 58



# BENETEAU OCEANIS 58





# BENETEAU OCEANIS 58



# BENETEAU OCEANIS 58

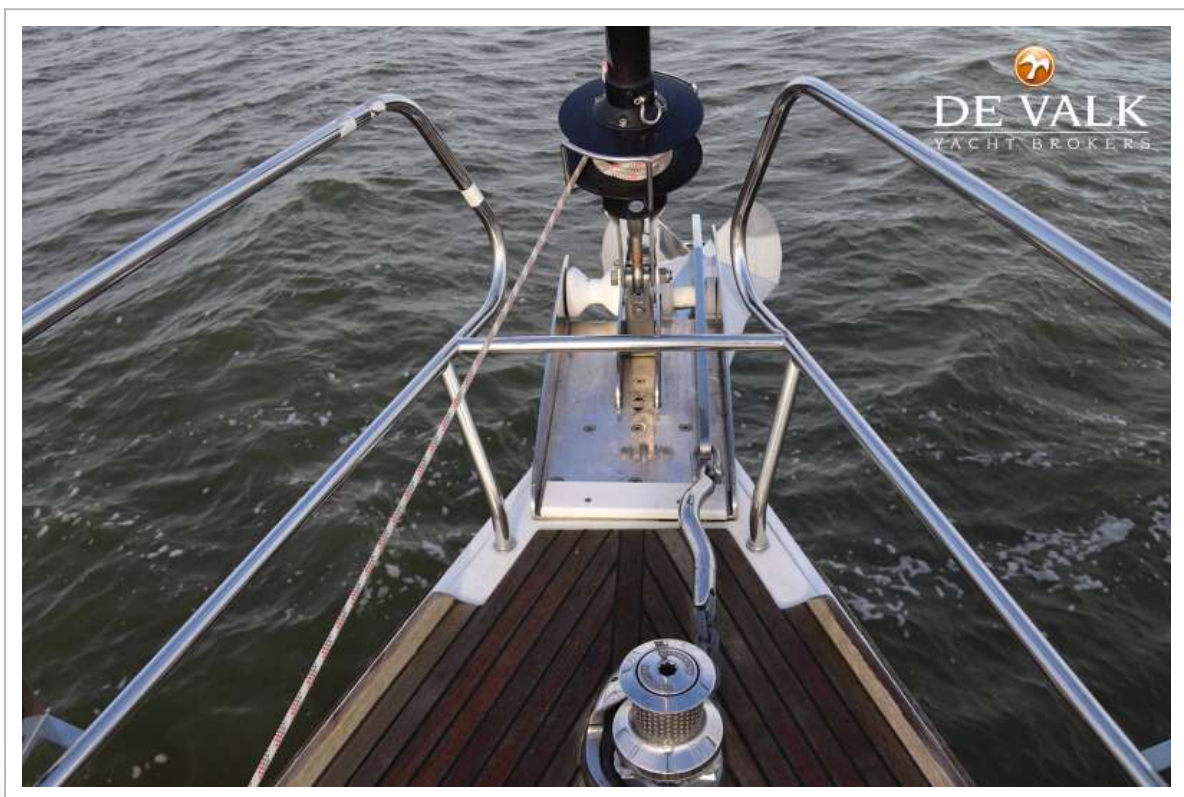




# BENETEAU OCEANIS 58



# BENETEAU OCEANIS 58





# BENETEAU OCEANIS 58



# BENETEAU OCEANIS 58



# BENETEAU OCEANIS 58





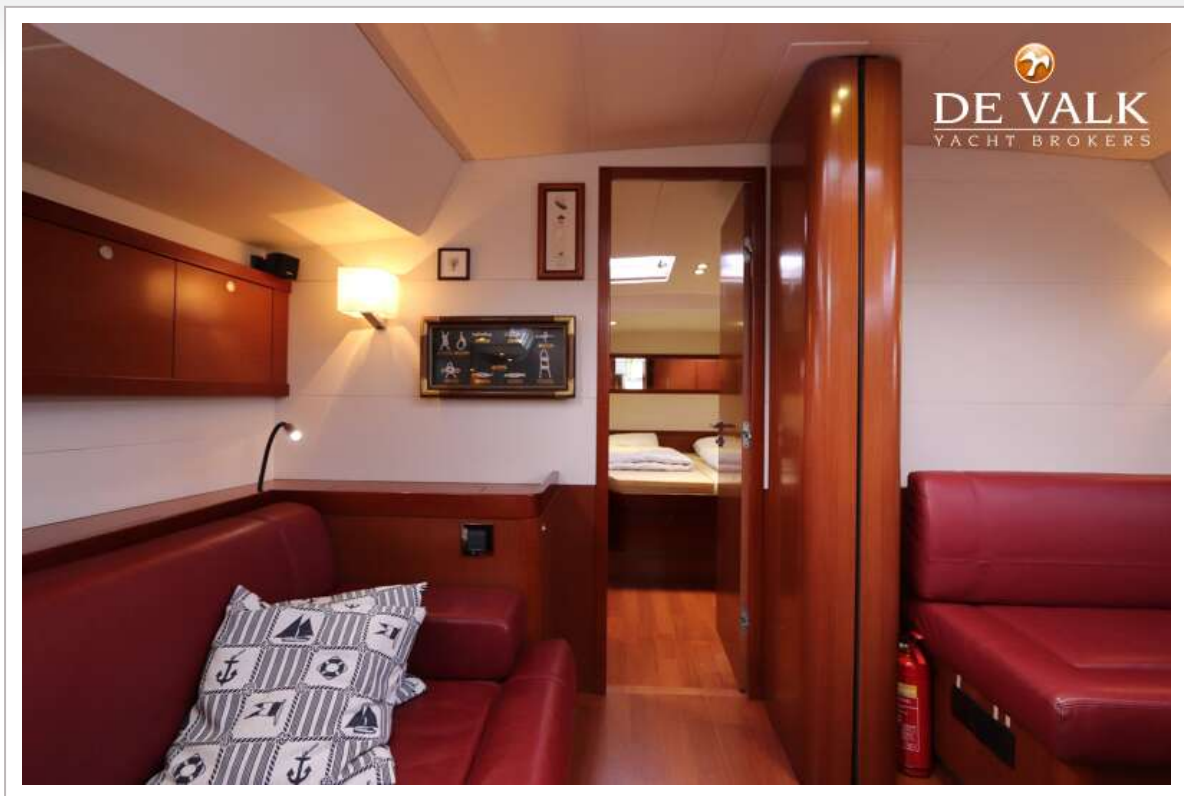
# BENETEAU OCEANIS 58



# BENETEAU OCEANIS 58



# BENETEAU OCEANIS 58





# BENETEAU OCEANIS 58



# BENETEAU OCEANIS 58





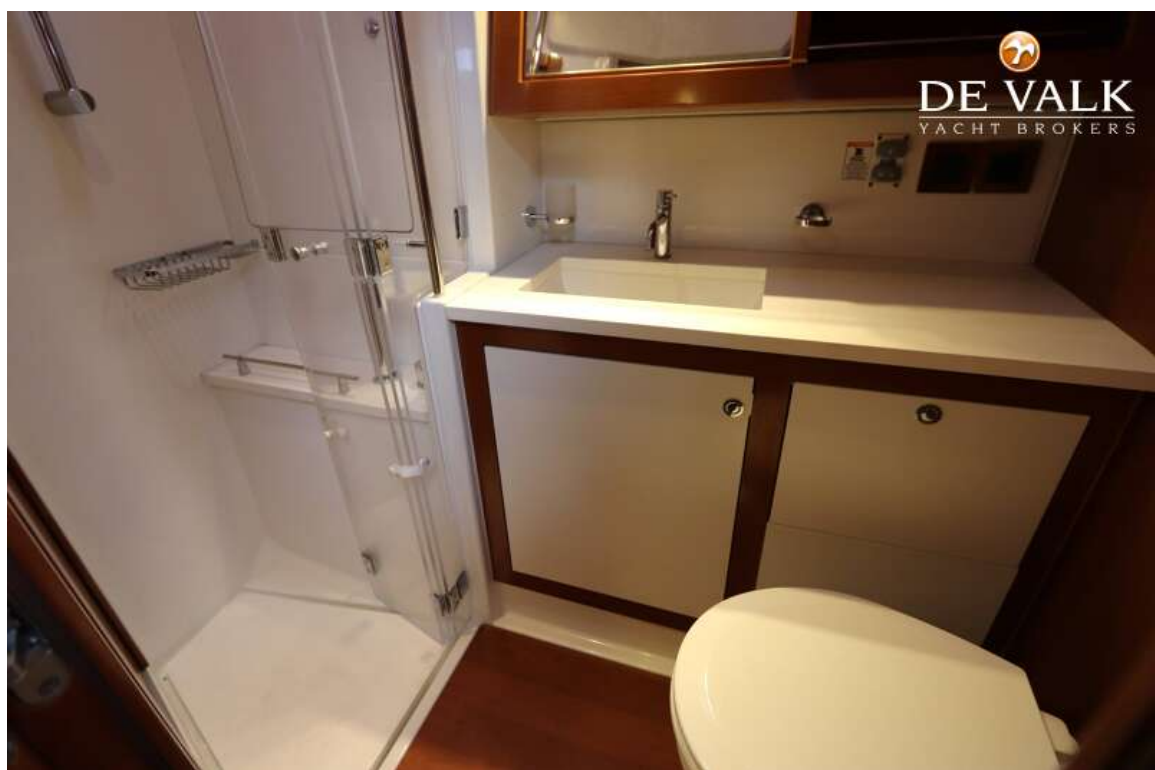
# BENETEAU OCEANIS 58



# BENETEAU OCEANIS 58



# BENETEAU OCEANIS 58





# BENETEAU OCEANIS 58

