



BAVARIA 46 CRUISER



BAVARIA 46 CRUISER

BROKER'S COMMENTS

This Bavaria dates from the time when things were going well in yacht building, in particular with Bavaria. It is clearly a J&J Design, recognizable by the flowing lines. The Bavaria 46 is suitable for a large group with its 4 cabins. Thanks to the furling sails (Gennaker included), the boat can be sailed with a two-man crew. Very complete ship with, by example 75 HP Volvo, bow thruster, heating, solar panels, spacious galley and 2.05 m headroom! Contact De Valk Sint Annaland for an appointment on board this Bavaria 46 Cruiser in Greece. Delivery in NL, Belgium or Germany is negotiable.

Jan-Ward van Dantzig

SPECIFICATIONS

Dimensions	14.40 x 4.35 x 1.85 (m)	Builder	Bavaria Yachtbau
Built	2005	Cabins	4
Material	GRP	Berths	8
Engine(s)	1 x Volvo Penta D2-75 diesel	Hp/Kw	75.00 (hp), 55.20 (kw)
Asking price	sold (VAT)	Lying	Greece

CONTACT

Sales office	De Valk Sint Annaland B.V.	Telephone	+31 (0)166 601 000
Address	Koelhuisweg 4 4697 RM Sint Annaland NL	E-mail	sintannaland@devalk.nl

DISCLAIMER

These particulars are given in good faith as supplied but cannot be guaranteed.



BAVARIA 46 CRUISER

GENERAL

Model	BAVARIA 46 CRUISER
Type	sailing yacht
LOA (m)	14,40
LWL (m)	12,20
Beam (m)	4,35
Draft (m)	1,85
Air draft (m)	21,50
Headroom (m)	2,06
Year built	2005
Builder	Bavaria Yachtbau
Country	Germany
Designer	J & J Designs
Displacement (t)	11,5
Ballast (tonnes)	cast iron 3,3
CE norm	A
Hull material	GRP
Hull colour	white With a blue striping
Keel type	fin keel
Superstructure material	GRP
Rubbing strake	aluminum
Deck material	GRP
Deck finish	teak Re-caulked in 2021
Superstructure deck finish	non-skid moulded in & teak (re-caulked in 2021)
Cockpit deck finish	teak (Re-caulked in 2021)
Antifouling (year)	2024
Dorades	yes
Window frame	aluminium
Window material	polycarbonate
Deckhatch	Lewmar with mosquito screens and blinds
Portholes	aluminium Lewmar



BAVARIA 46 CRUISER

Fuel tank (litre)	polyethylene 210
Level indicator (fuel tank)	yes
Freshwater tank (litre)	polyethylene 1 x 210 & 1 x 250
Blackwater tank (litre)	polyethylene 2 x 60
Blackwater tank extraction	deck extraction + uw line
Wheel steering	cable steering Lewmar pedestals with 2x leather covered stainless steel wheel
Emergency tiller	yes
More info on hull	Stainless steel & teak BatSystem bow platform installed in 2019. Total length including the bow platform / bowsprit : 15,50 m
Extra info	Rudder bearings replaced (New in 2019)
Extra info	New in 2015 : Teak doors & mosquito screen for the entrance
Extra info	Steering wheel covers

ACCOMMODATION

Cabins	4
Berths	8
Interior	cherry With blue cloth upholstery
Floor	woodprint "Teak and holly"
Saloon	U-shaped with a 2 person seat on port side of the table
Headroom saloon (m)	2,06
Heating	diesel ducted hot air Webasto Airtop Evo M with blow points in all areas
Chart table	On starboard side
Aft Cabin	2 x
Dinette	yes
Galley	On port side - Headroom 2,05 m
Countertop	Duropol White with black spots
Sink	stainless steel 2 x
Cooker	calor gas 2 Burners
Oven	yes
Fridge	1 x Top- & 1 x front loader with a compressor



BAVARIA 46 CRUISER

Freezer	Small freezer compartment in the front loader fridge
Hot water system	220V + engine QL boiler
Water pressure system	electrical
Owners cabin	double bed In front cabin - Headroom : 1,93 m
Bed length (m)	2,20 x 1,60
Wardrobe	hanging and shelves
Bathroom	Front bathroom changed to a storage room - Headroom : 1,98 m
Extra info	New in 2019 : Botman Comfort mattresses in front cabin
Guest cabin 1	double bed Port Side aft - Headroom : 2,00 m
Bed length (m)	2,06 x 1,55
Wardrobe	hanging and shelves
Bathroom	shared Aft bathroom - Headroom : 2,03 m
Toilet	shared
Toilet system	electric Jabsco
Wash basin	in the bathroom Mixer tap is corroded
Shower	shared Shower head is corroded
Guest cabin 2	double bed Starboard side aft - Headroom : 2,00 m
Bed length (m)	2,06 x 1,55
Wardrobe	hanging and shelves
Guest cabin 3	bunk bed On port side - Headroom : 1,98 m
Bed length (m)	2,00 x 0,70
Wardrobe	hanging and shelves
Extra info	Lee Cloths for both bunk beds
Extra info	New in 2017 : 12 Volt ventilators installed in all cabins
Extra info	LED interior lights with 2 x dimmer in the saloon.

MACHINERY

No of engines	1
Make	Volvo Penta
Type	D2-75
HP	75



BAVARIA 46 CRUISER

kW	55.20
Fuel	diesel
Year installed	2005
Maximum speed (kn)	8,5
Cruising speed (kn)	7,5
Consumption (l/hr)	3,5
Engine hours	2500
Engine cooling system	freshwater heat exchanger Needs to be renewed
Drive	sail-drive
Saildrive seal	January 2023
Engine controls	bowden cable
Bowthruster	electric SidePower
Exhaust	watercooled
Propeller type	fixed
Propeller blades	3
Manual bilge pump	1 x
Electric bilge pump	1 x
Electrical installation	12 & 220 Volt
Start battery	New in 2011 : 1 x 100 Ah
Service battery	New in 2020 : 2 x 240 Ah (probably to be replaced)
Bowthruster battery	New in 2015 : 1 x 100 Ah AGM
Battery monitor	New in 2015 : Mastervolt Bep DCSM colour display
Battery charger	New in 2015 : Mastervolt ChargeMaster Plus 12/75-3
Solar panel	2 x 1.000 Watt Solar Modul & Solar regulator MPPT 30A LED (2015)
Diode battery combiners	New in 2015 : Mastervolt 1603 ig
Shorepower	with cable
Extra info	New in 2015 : 12/130 A Alpha Pro Alternator with regulator
Extra info	RPM display is scratched but still functioning - Engine hour counter is not functioning - engine hours is an estimation
Extra info	New in January 2023 : Saildrive 150S-A. In March 2023, the Turbo has been serviced, a new exhaust elbow mounted on the engine and also the exhaust hoses have been renewed.



BAVARIA 46 CRUISER

NAVIGATION

Compass	2 x Plastimo Olympic 135
Depth sounder/log	Raymarine ST60 Tridata
Windset	Raymarine ST60
Repeater	Raymarine ST60 Graphic
VHF	New in 2015 : Garmin GHS 10i (as the chart plotter is not functioning anymore, it doesn't have a position, needs GPS information)
VHF handheld	New in 2015 : Garmin GHS 20i
Autopilot	Raymarine ST7000 & Smartpilot S3 Course Computer
Rudder angle indicator	Via autopilot
EPIRB	New in 2022 : Simrad 406/121.5 MHz Satellite Category 1
Navigation lights	yes

EQUIPMENT

Sprayhood with grab rail	Light Grey
Bimini	Light Grey
Winter cover	Grey light weight (2009 - only used once)
Cockpit cushions	Some loose cushions
Cockpit table	With teak and folding side panels (new teak in 2015) and a cover
Bathing platform	Covered with teak
Boarding ladder	stainless steel (New in 2015)
Gangway	Aluminium (folding) with teak grating (2015)
Deck shower	(With hot and cold water)
Anchor	New in 2019 : Kobra
Anchor chain	New in 2015 : 80 Meter stainless steel chain
Anchor 2	Danforth Stern anchor with rope & a spare Delta anchor
Windlass	electrical Lofrans Tigres 1200 Watt (mounted on deck in 2019)
Outboard support	On the pushpit
Sea railing	wire New in 2015 : Double plastic covered stainless steel railing
Grab rail (superstructure)	stainless steel



BAVARIA 46 CRUISER

Railing side opening gates	On both sides
Pushpit	Stainless steel
Pulpit	Stainless steel
Life raft	valise (or bag) Viking UKL
Life raft (pers)	8
Last life raft survey	2021
Lifejackets	yes
Safety harness	yes
Lifebuoy	yes
Safety lines on deck	yes
Radar reflector	yes
Fenders	yes
Mooring lines	yes
Spare parts	yes
TV	New in 2012 : JVC
Radio-cd player	Sony Radio/CD/MP3 WMA
Cockpit speakers	2 x
Speakers in salon	2 x
Fire extinguisher	4 x
Latest extinguisher survey	Unknown
Extra info	Small AEG Electrolux 12 Volt vacuum cleaner
Extra info	Small built-in BTV safe
Extra info	LED Cockpit lights

RIGGING

Rigging	fractional 19/20
Standing rigging	wire 2005
Brand mast	Seldén
Material mast	aluminium
Spreaders	2 x Sets of spreaders
Fully battened mainsail	New in 2015 : UK Sails Dacron (furling, vertical battens) 49,3m2



BAVARIA 46 CRUISER

Stoway mast	Selden Furlin Mast (manual)
Genoa	New in 2015 : UK Sails Dacron Crosscut with an UV strip - 64m2
Genoa furler	New in 2015 : Furlex 304 - including inner stay
Gennaker	New in 2019 : Blue A3 Gennaker with Karver Furler & endless line
Reefing System	main in-boom furling
Backstay adjuster	mechanical Hasselfors
Boomvang	gasspring Rodkicker
Genoa sheetwinches	2 x Stainless steel Lewmar 50 ST
Halyard winches	2 x Stainless steel Lewmar 40 ST
Spinnaker winch	1 x Stainless steel Lewmar 40 ST (gennaker furler - new in 2019)
Reefing winch	1 x Stainless steel Lewmar 40 ST (genoa furler)
Spi-pole	aluminium Selden (hanging on rails on front side of mast)
Extra info	New in 2019 : BatSystem bow platform with a hook to connect the Gennaker



BAVARIA 46 CRUISER



BAVARIA 46 CRUISER



BAVARIA 46 CRUISER



BAVARIA 46 CRUISER



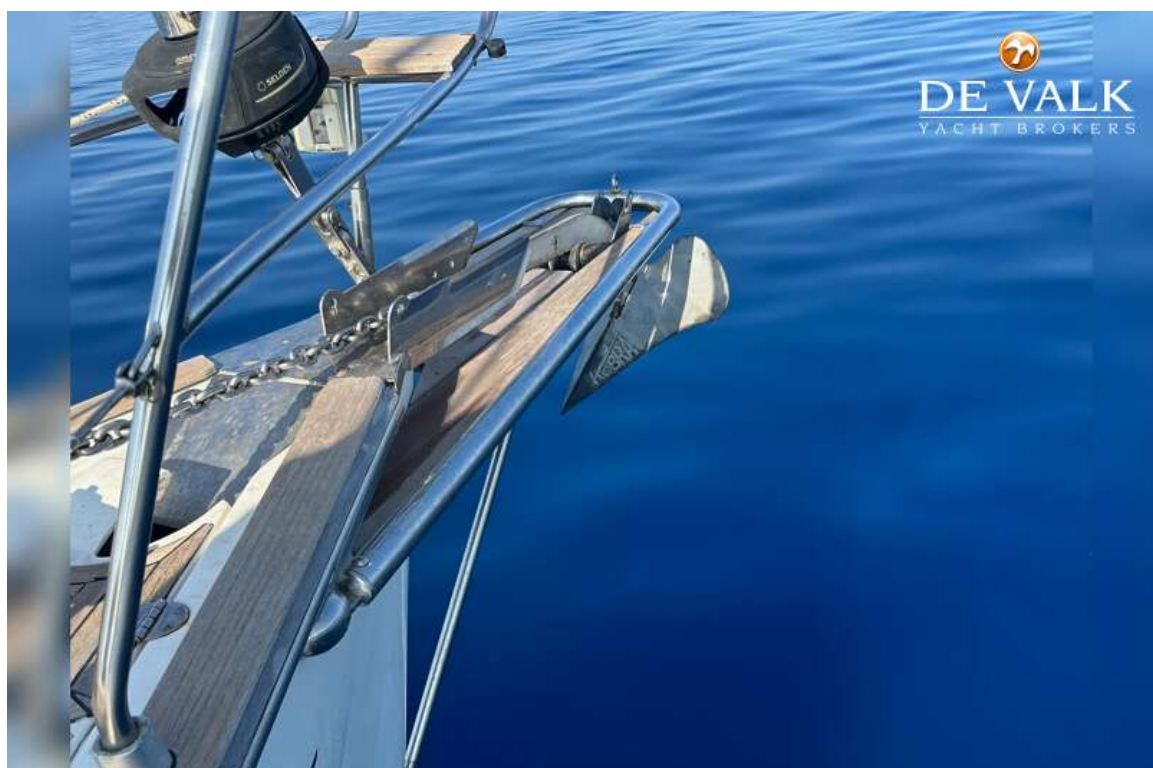
BAVARIA 46 CRUISER



BAVARIA 46 CRUISER



BAVARIA 46 CRUISER



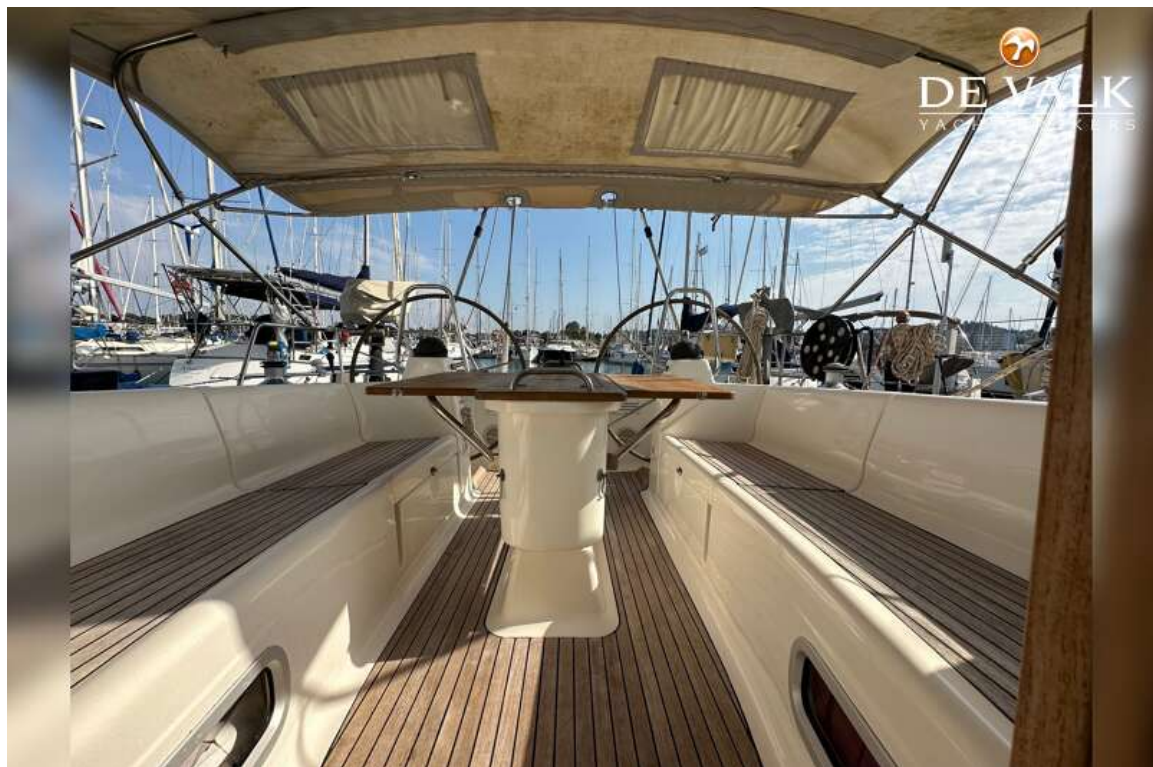
BAVARIA 46 CRUISER



BAVARIA 46 CRUISER



BAVARIA 46 CRUISER



BAVARIA 46 CRUISER



BAVARIA 46 CRUISER



BAVARIA 46 CRUISER



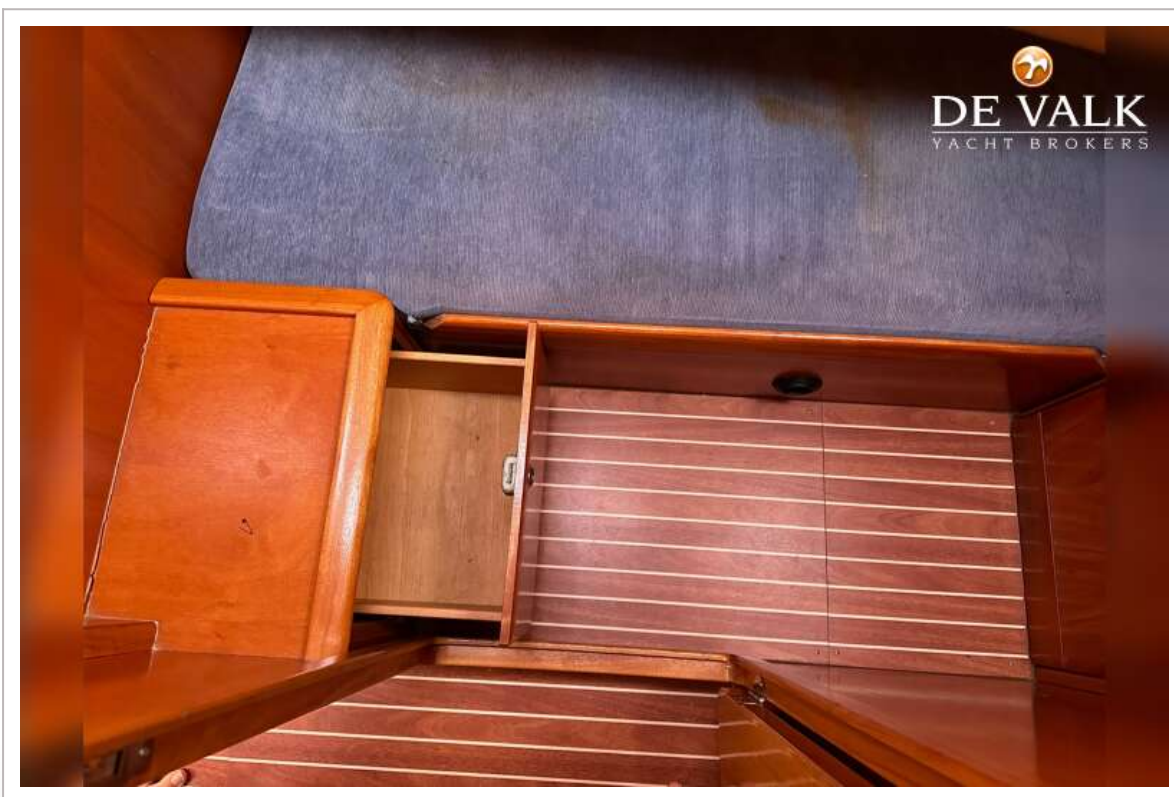
BAVARIA 46 CRUISER



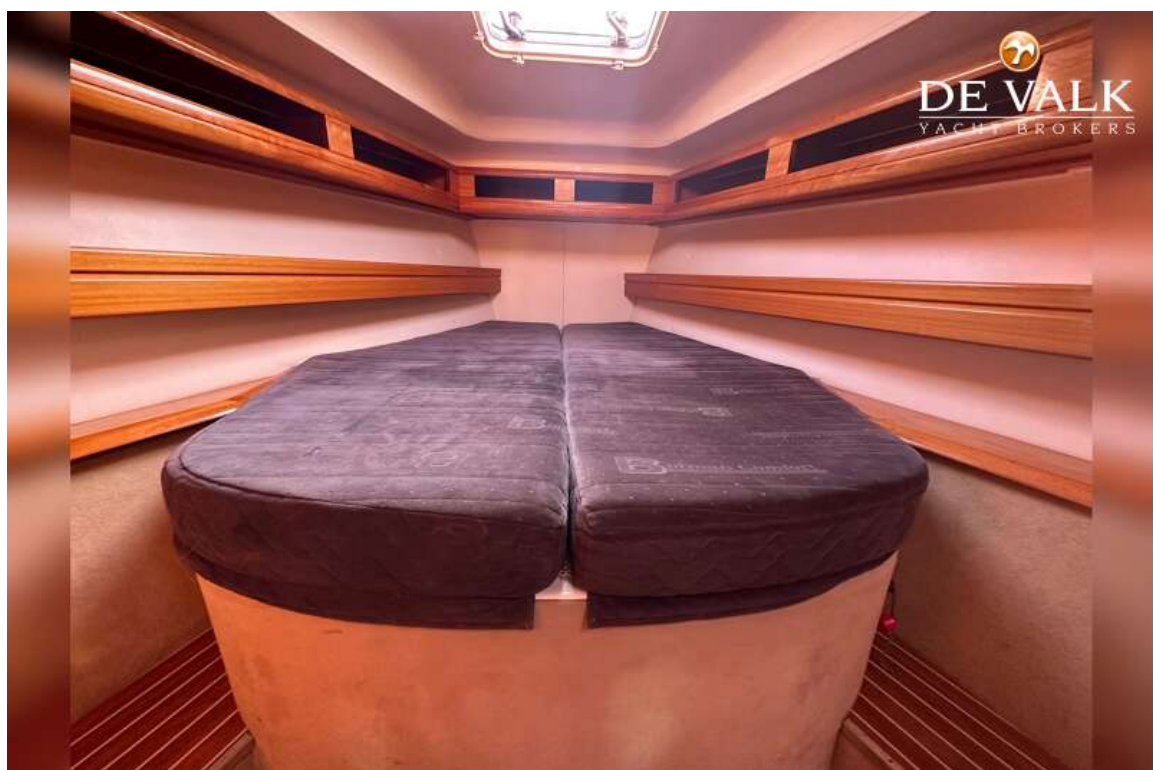
BAVARIA 46 CRUISER



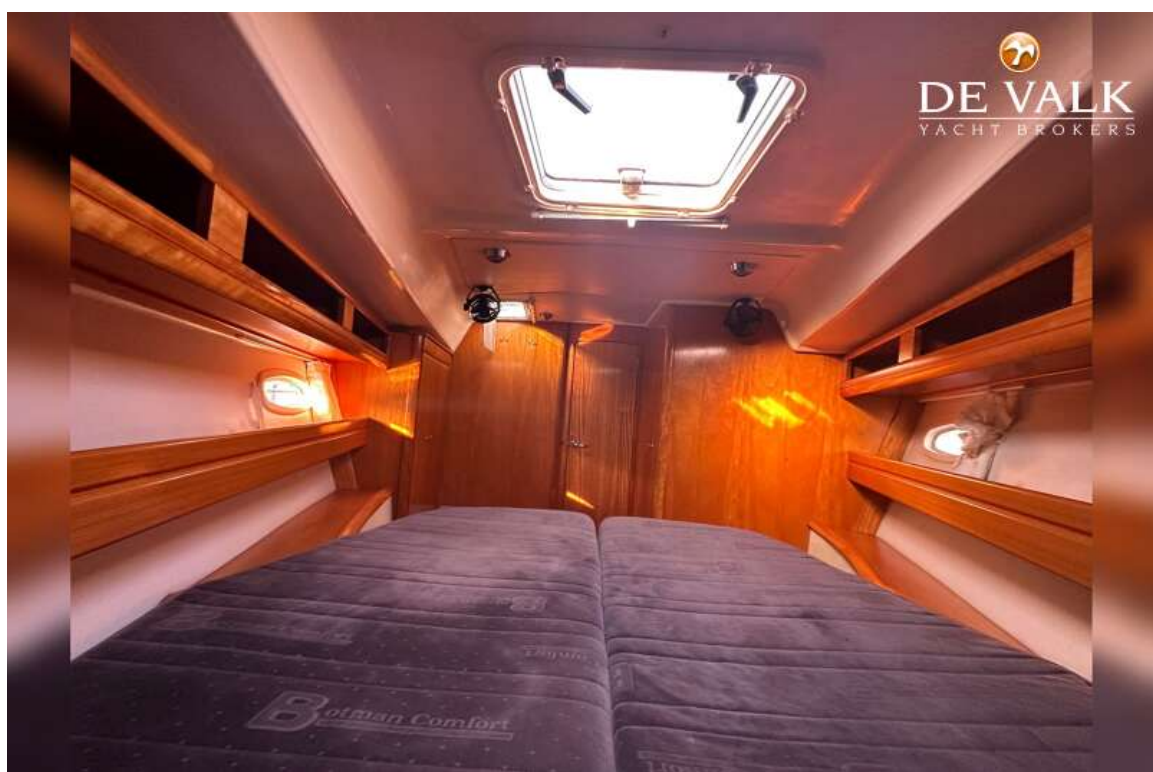
BAVARIA 46 CRUISER



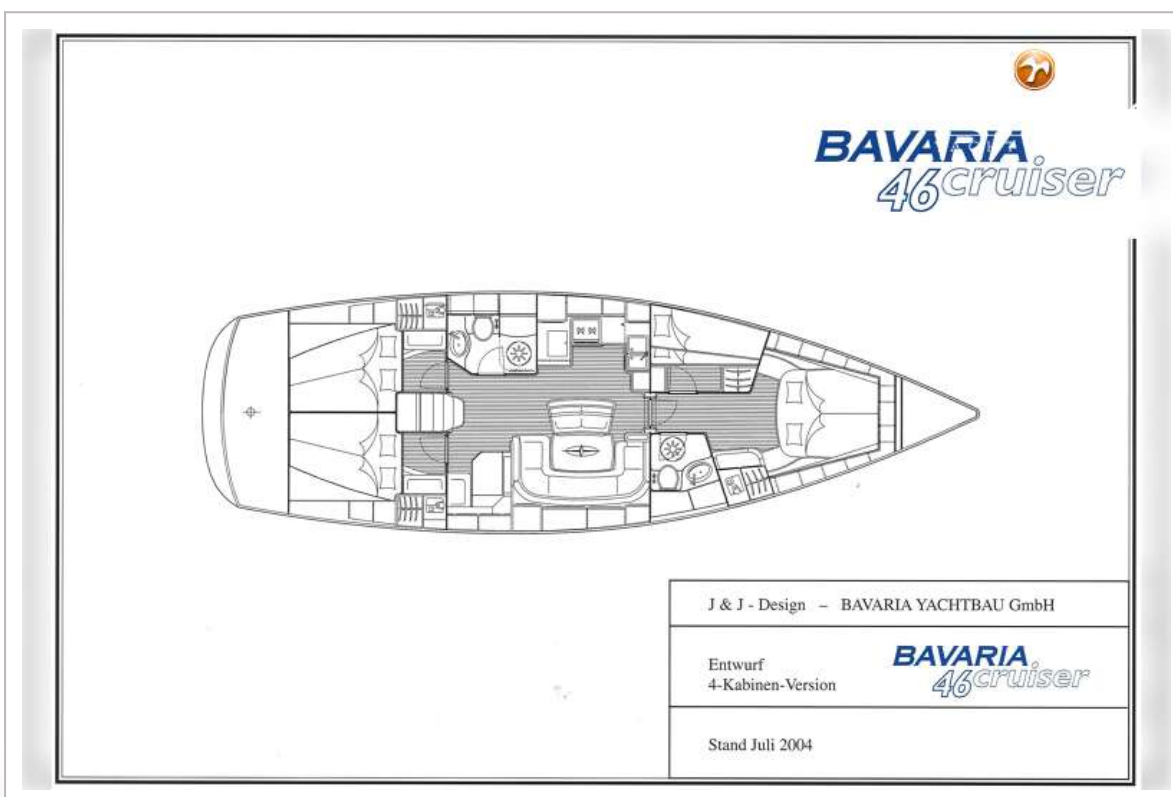
BAVARIA 46 CRUISER



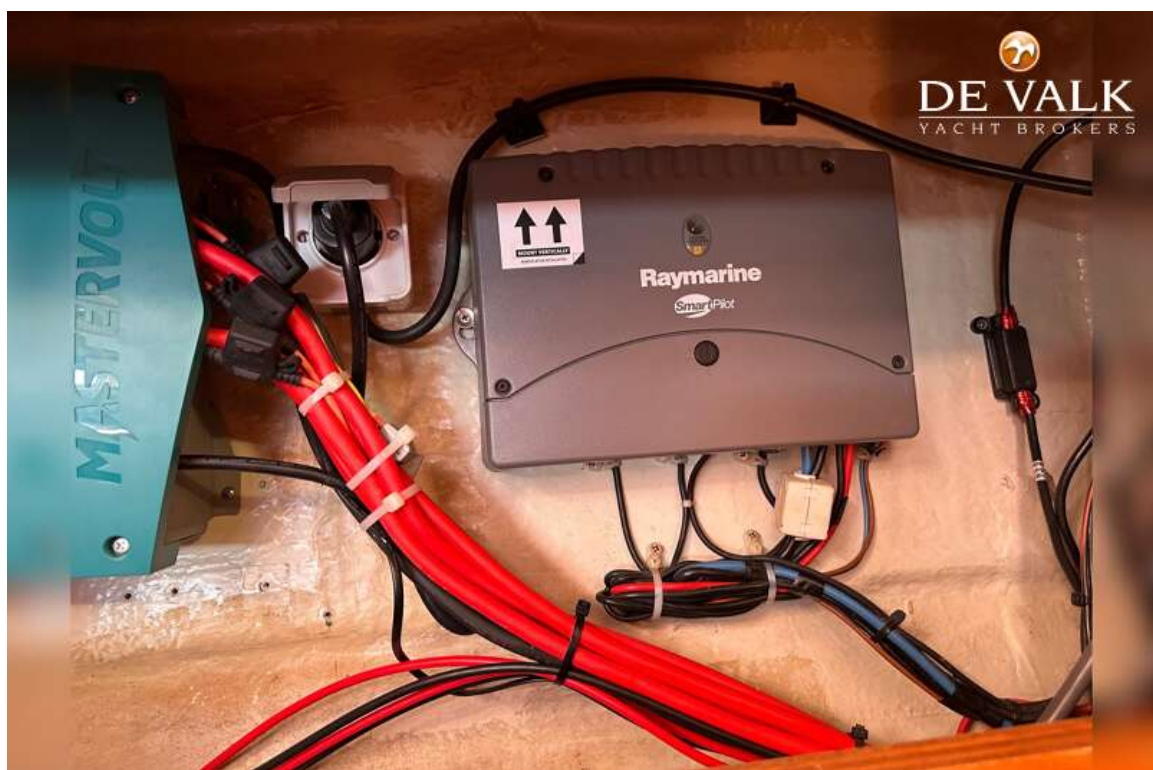
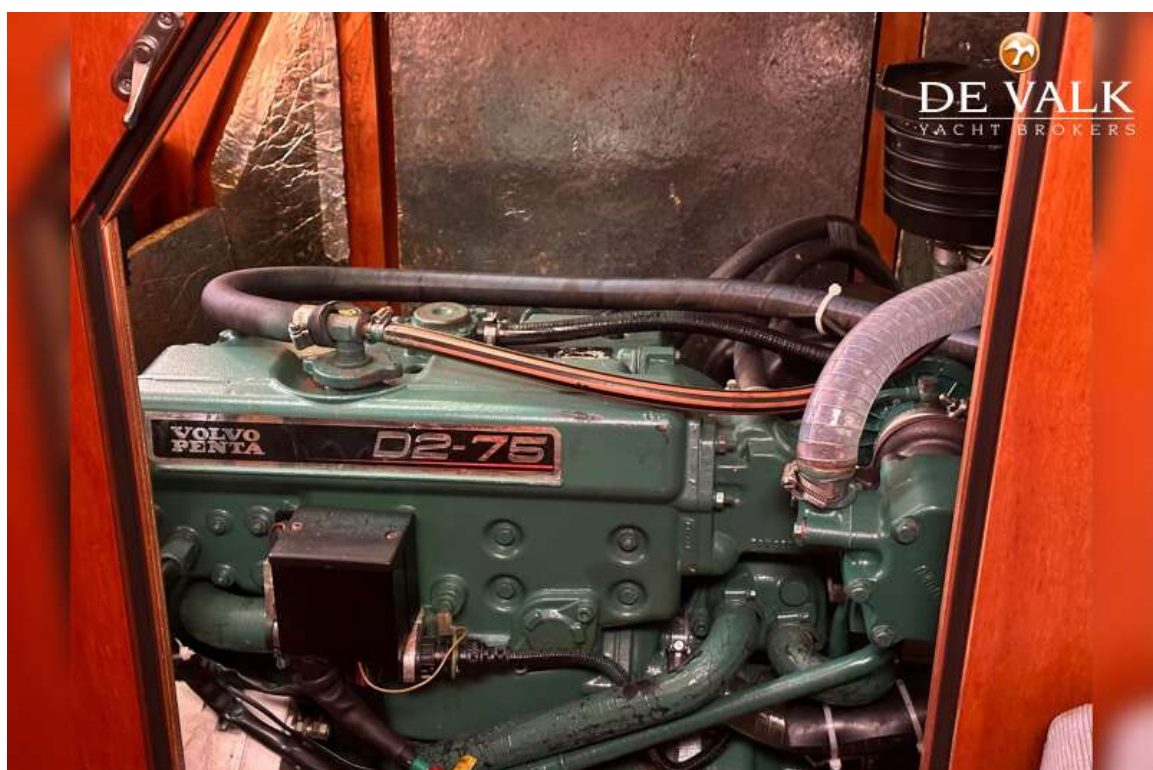
BAVARIA 46 CRUISER



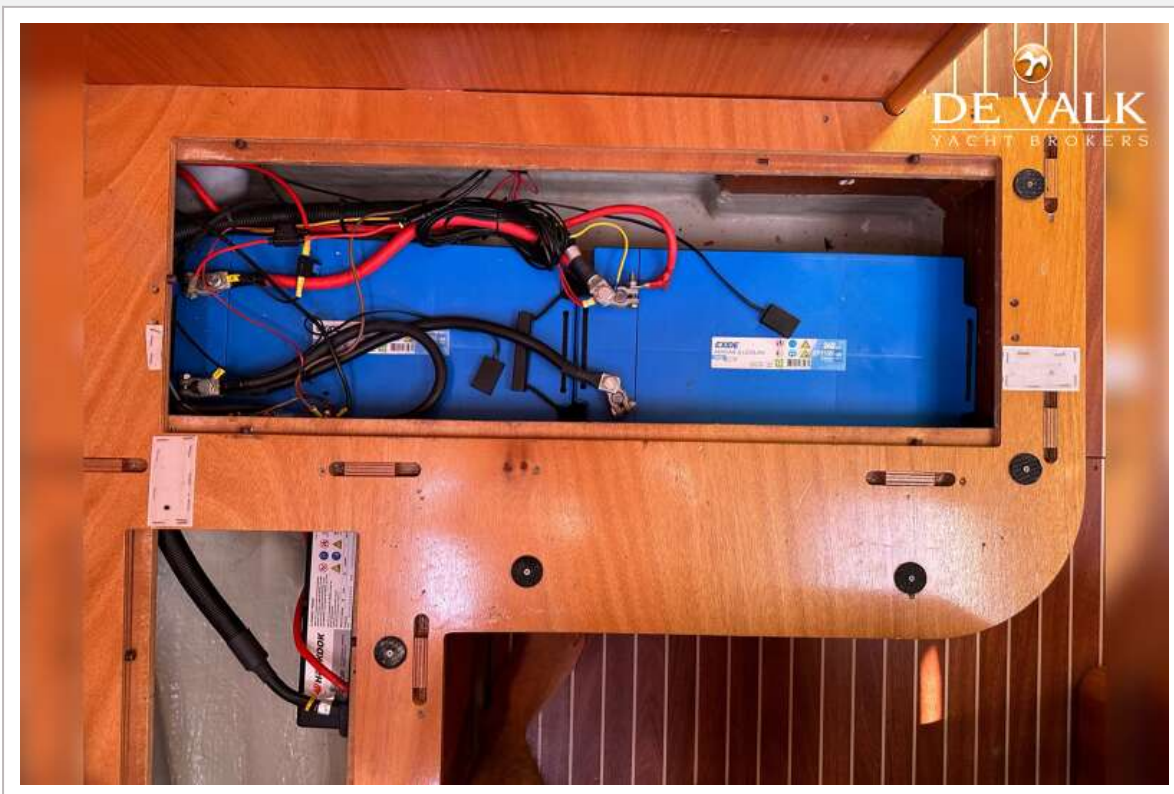
BAVARIA 46 CRUISER



BAVARIA 46 CRUISER



BAVARIA 46 CRUISER



BAVARIA 46 CRUISER

