



DE VALK  
YACHT BROKERS

## DUFOUR ATOLL 6



DE VALK  
YACHT BROKERS

## BROKER'S COMMENTS

When Philippe Briand and Dufour developed the Atoll concept it was way before time, offering similar comfort as a modern catamaran. Today its width and one level living solution are both sought after more than ever before. Vessel is Class A CE approved. With five double cabins and four bathrooms, the boat is ideal for families or groups of friends on longer trips or for bare boat or skippered charter - Aft two cabins have private access from cockpit. Almost new main engine and generator make this strong built boat an even more interesting buy. OFFERS INVITED !

*Miha Spendal*

## SPECIFICATIONS

<b>Dimensions</b>	14.90 x 5.05 x 1.88 (m)	<b>Builder</b>	Dufour Yachts
<b>Built</b>	2001	<b>Cabins</b>	5
<b>Material</b>	GRP	<b>Berths</b>	10
<b>Engine(s)</b>	1 x YANMAR 4JH11 diesel	<b>Hp/Kw</b>	110.00 (hp), 80.96 (kw)
<b>Asking price</b>	sold (VAT )	<b>Lying</b>	at sales office

## CONTACT

<b>Sales office</b>	De Valk Istria	<b>Telephone</b>	+386 (1) 600 2704
<b>Address</b>	(Marina Izola) Dantejeva Ulica 22 6310 Izola SI	<b>E-mail</b>	istria@devalk.nl

## DISCLAIMER

These particulars are given in good faith as supplied but cannot be guaranteed.



## GENERAL

Model	DUFOUR ATOLL 6
Type	sailing yacht
LOA (m)	14,90
Beam (m)	5,05
Draft (m)	1,88
Headroom (m)	2,10
Year built	2001
Launched	2001
Builder	Dufour Yachts
Country	France
Designer	Philippe Briand
Displacement (t)	15
CE norm	A
Hull material	GRP
Hull colour	white
Keel type	fin keel
Superstructure material	GRP
Deck material	GRP
Deck finish	non-skid moulded in
Superstructure deck finish	non-skid moulded in
Cockpit deck finish	non-skid moulded in
Antifouling (year)	Each year. Anti osmosis new 2019
Window frame	aluminium
Window material	perspex
Portholes	aluminium
Fuel tank (litre)	500
Level indicator (fuel tank)	yes
Freshwater tank (litre)	2 x 700
Level indicator (freshwater)	yes
Blackwater tank (litre)	4 x 60 l



Wheel steering	cable steering 2 steering wheels
Emergency tiller	yes

## ACCOMMODATION

Cabins	5
Berths	10
Crew cabin	One of aft with access from cockpit, own bathroom
Crew berths	2
Interior	White melamine, wooden trim
Floor	vinyl
Deck saloon	yes
Saloon	yes
Headroom saloon (m)	210
Heating	diesel ducted hot air Webasto
Galley	On cockpit level, 360 degree view
Countertop	corian
Sink	GRP
Cooker	induction
Oven	yes
Fridge	2019
Freezer	2019
Hot water system	220V + engine New boiler 2023
Water pressure system	yes
Owners cabin	double bed
Wardrobe	yes
Bathroom	shared
Toilet	shared
Toilet system	manual
Wash basin	yes
Shower	yes
Guest cabin 1	double bed



# DUFOUR ATOLL 6

Wardrobe	yes
Bathroom	shared
Toilet	shared
Toilet system	manual
Wash basin	yes
Shower	yes
Guest cabin 2	double bed
Wardrobe	yes
Bathroom	shared
Toilet	shared
Toilet system	manual
Wash basin	yes
Shower	yes
Guest cabin 3	double bed
Wardrobe	yes
Bathroom	en suite
Toilet	yes
Toilet system	manual
Wash basin	yes
Shower	yes
Guest cabin 4	double bed
Wardrobe	yes
Bathroom	en suite
Toilet	en suite
Toilet system	manual
Wash basin	yes
Shower	yes

## MACHINERY

No of engines	1
Make	YANMAR



Type	4JH11
HP	110
kW	80.96
Fuel	diesel
Year installed	2020
Engine hours	1120
Engine cooling system	freshwater heat exchanger
Drive	shaft
Engine controls	At both steering wheels
Gearbox	mechanical
Bowthruster	electric 2019
Propeller type	fixed 3 blade
Propeller shaft material	stainless steel New 2020
Manual bilge pump	2019
Electric bilge pump	2 x (new 2019 and 2021) with automatic level switch
Electrical installation	yes
Generator	FISHER PANDA 6.8 KW
Running hours generator	390
Start battery	yes
Service battery	600 Ah
Generator battery	yes
Bowthruster battery	yes
Battery charger	90 A
Inverter	1500W (3000W peak) from 2021
Shorepower	with cable

## NAVIGATION

Compass	2 at helming positions
Electric compass	yes
Depth sounder	Raymarine ST60+
Log	Raymarine ST60+



Windset	Raymarine ST60+
Fish finder	LOWRANCE HDS Sonar
VHF	(GMDSS)- AIS active (2021)
Autopilot	RAYMARINE ST 6002 + Remotecontrol (NEW 2021)
Rudder angle indicator	yes
Radar	RAYMARINE Quantum 18" Q24W (NEW 2021)
GPS	yes
Plotter	RAYMARINE Hybrid Touch) and Lowrance HDS9
Wifi antenna	yes
Electronis chart(s)	yes
AIS transceiver	yes
Radio receiver	yes
EPIRB	yes
Navigation lights	yes

## EQUIPMENT

Fixed windscreen	yes
Fixed hardtop	With cabrio option
Sun awning	Cockpit side and aft awnings
Cockpit cushions	Partially new 2023
Cockpit table	2
Bathing platform	yes
Boarding ladder	yes
Transom door	yes
Gangway	Hydraulic 2016
Anchor	Rocna 33 kg
Anchor chain	12mm, 100m
Anchor 2	Chain and rope
Windlass	electrical Lofrans 1500W
Capstan	yes



Dinghy	rigid inflatable Golden Ship 375kg load (of 2022), aluminium bottom
Outboard	Japanese GO ii, 2 stroke, 2,5HP
Outboard support	yes
Davits	yes
Life raft	2 pcs, 6 and 12 pers
Lifejackets	yes
Safety harness	yes
Binocular	yes
Radar reflector	yes
Fenders	yes
Mooring lines	yes
Spare parts	yes
TV	yes
TV receiver	yes
Radio-cd player	yes
Speakers in salon	yes
Fire extinguisher	yes

## RIGGING

Rigging	sloop
Standing rigging	wire
Material mast	aluminium coated
Spreaders	2
Mainsail	Full batten 2016
Mainsail cover	Lazy bag with lazy jacks from 2019
Fully battened mainsail	yes
Genoa	yes
Genoa furler	New 2023, Pro Furl
Reefing System	slabreefing
Boomvang	mechanical





Genoa sheetwinches

yes

Halyard winches

At mast



## DUFOUR ATOLL 6

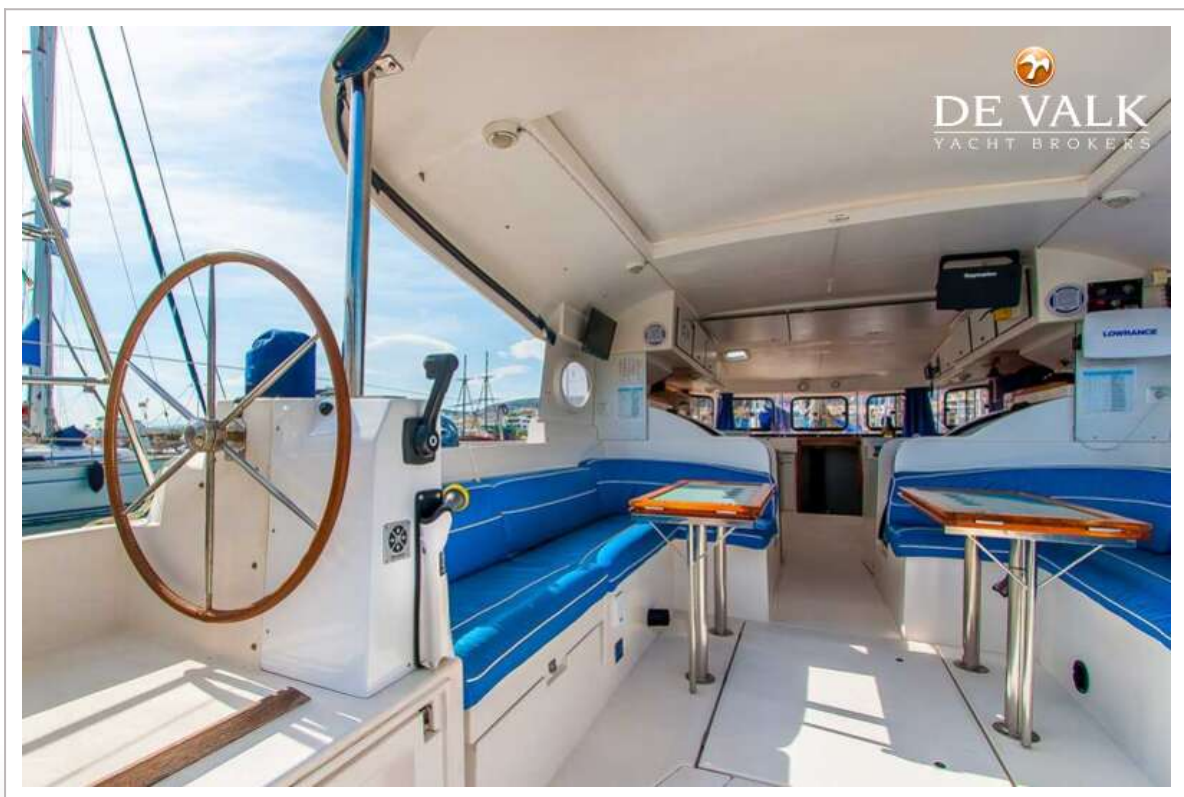




## DUFOUR ATOLL 6

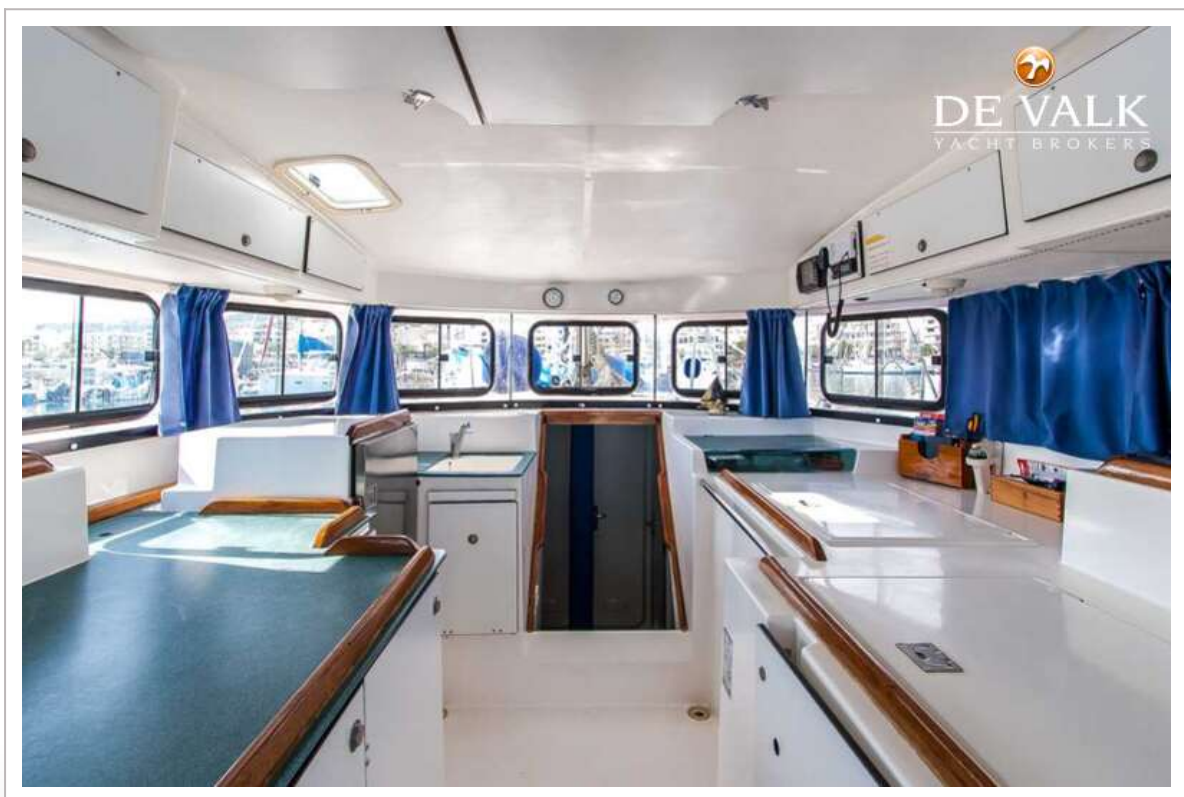
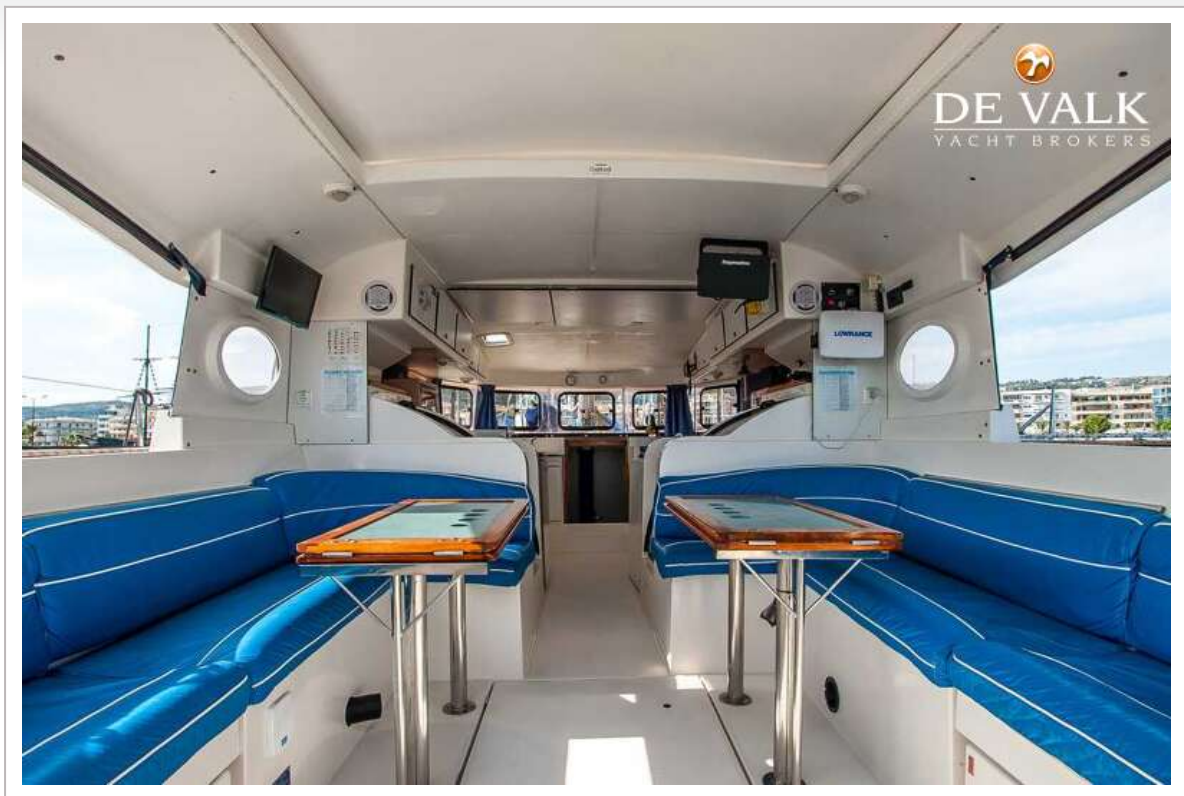


## DUFOUR ATOLL 6

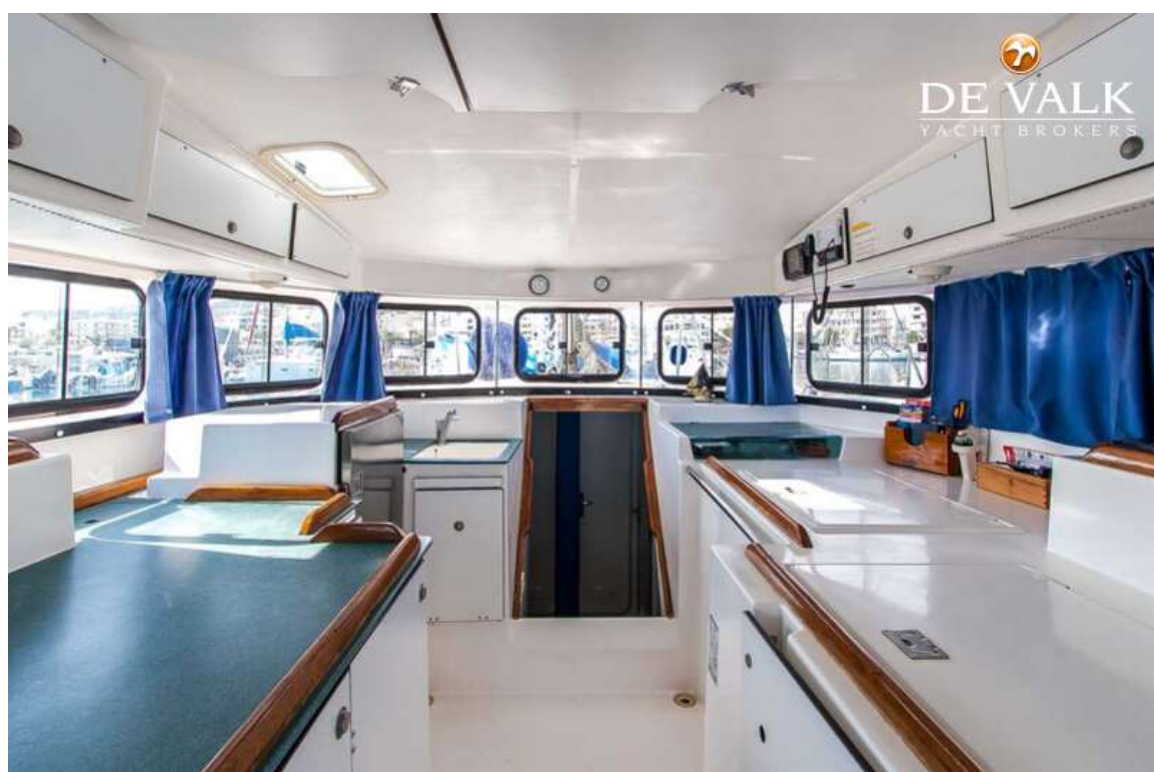
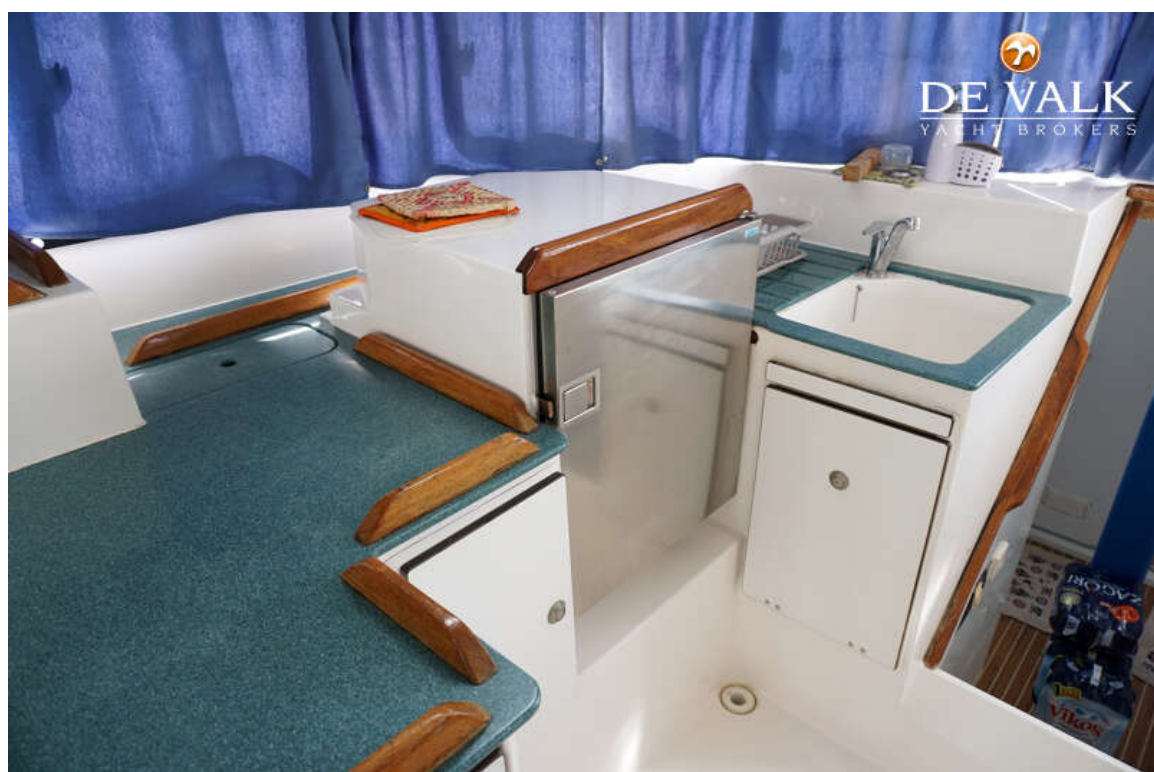




## DUFOUR ATOLL 6

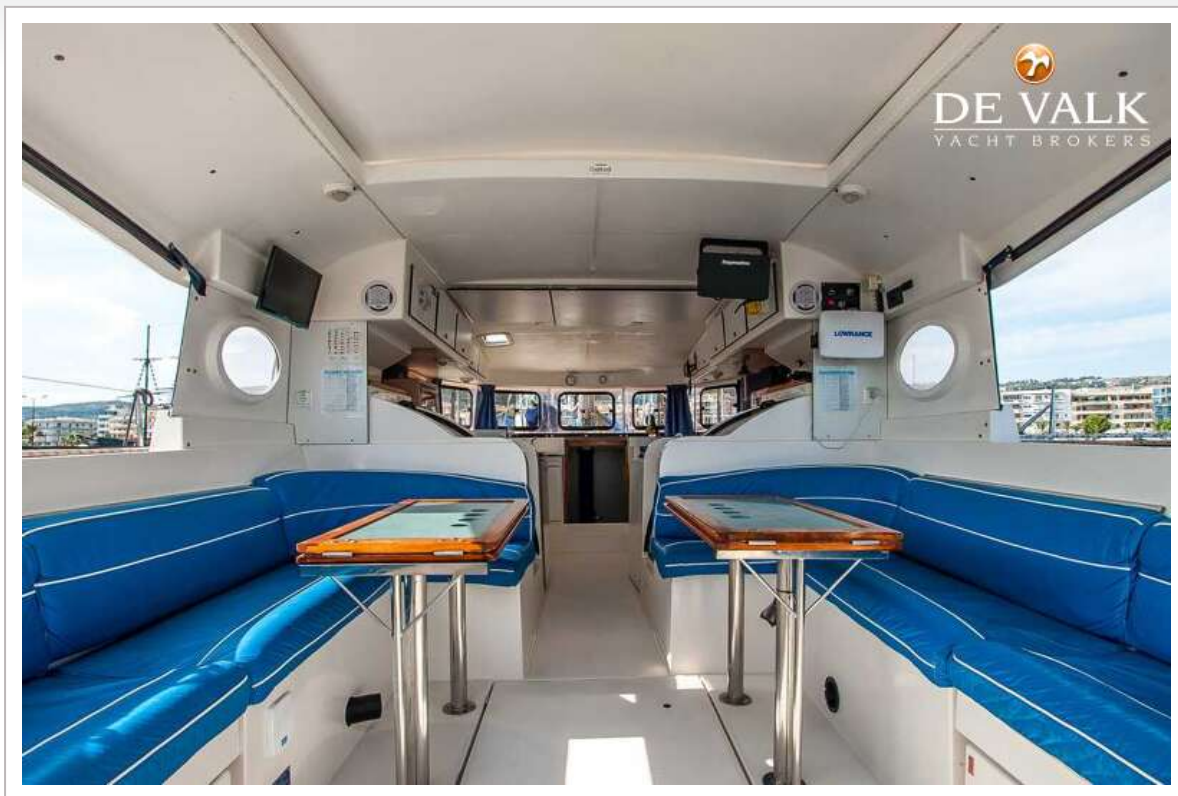


## DUFOUR ATOLL 6

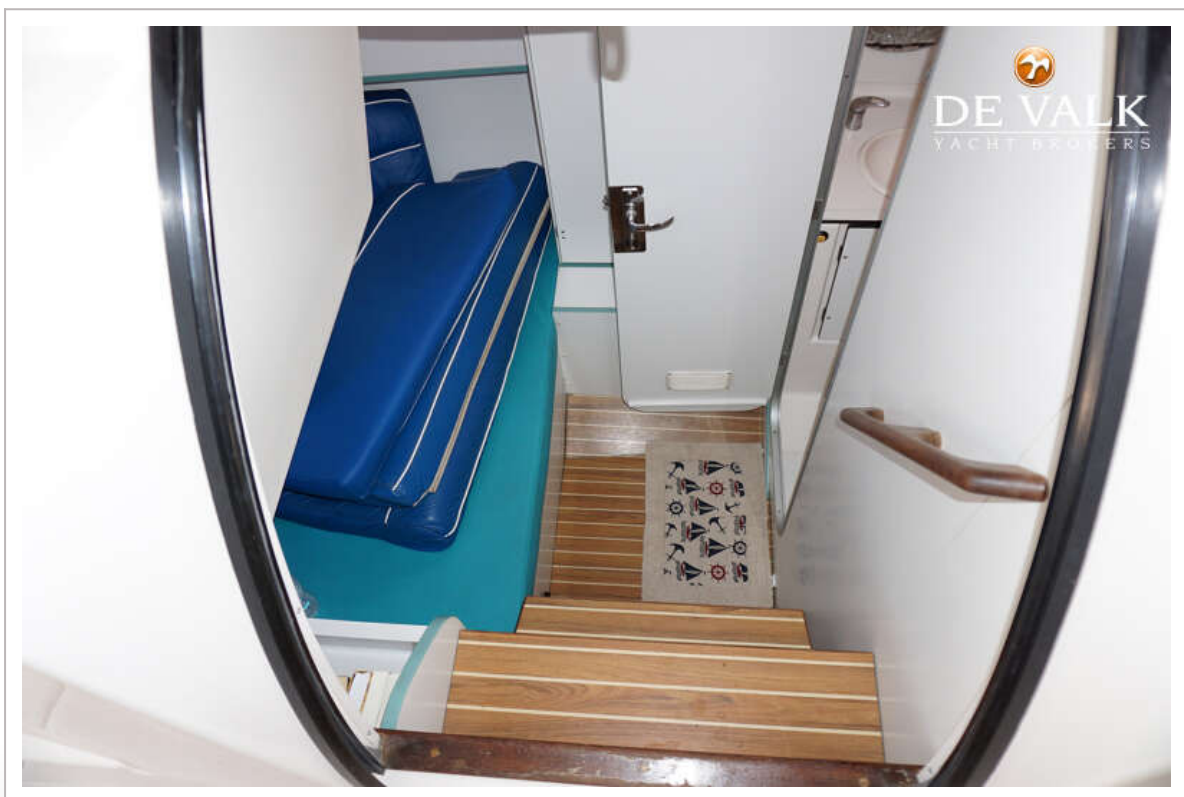




## DUFOUR ATOLL 6



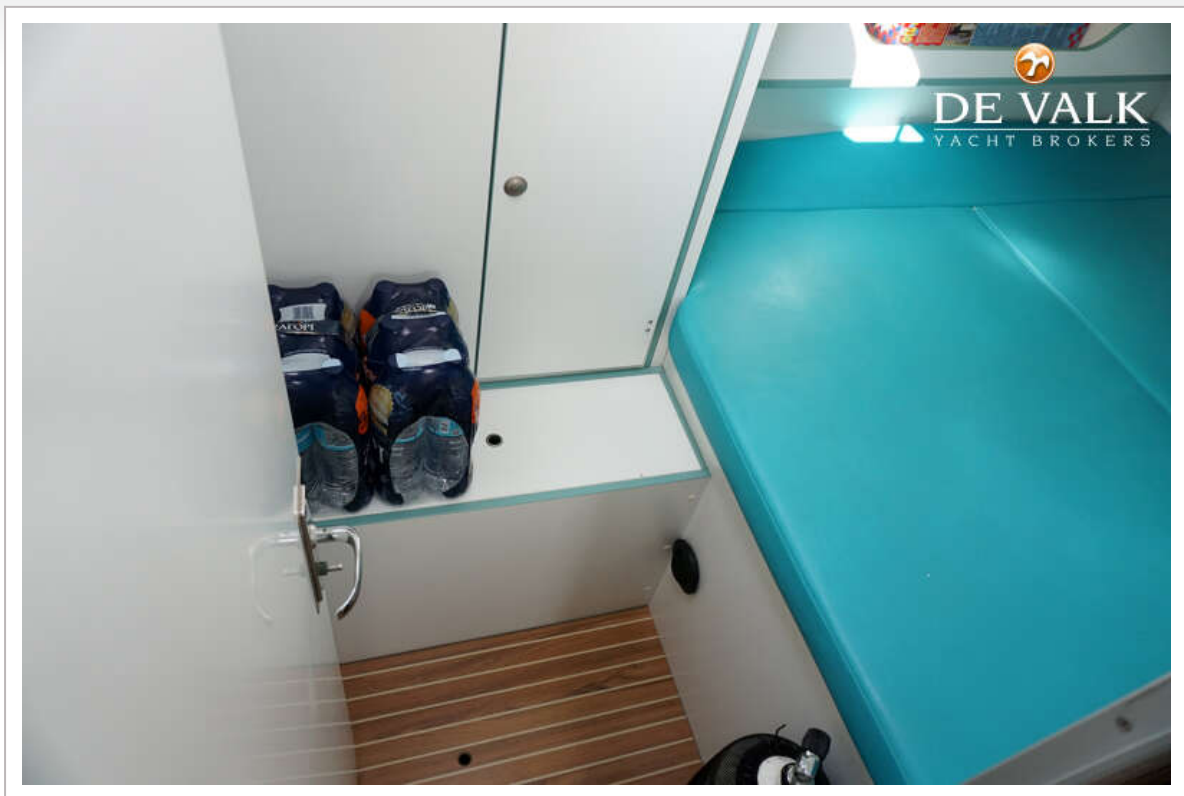
## DUFOUR ATOLL 6



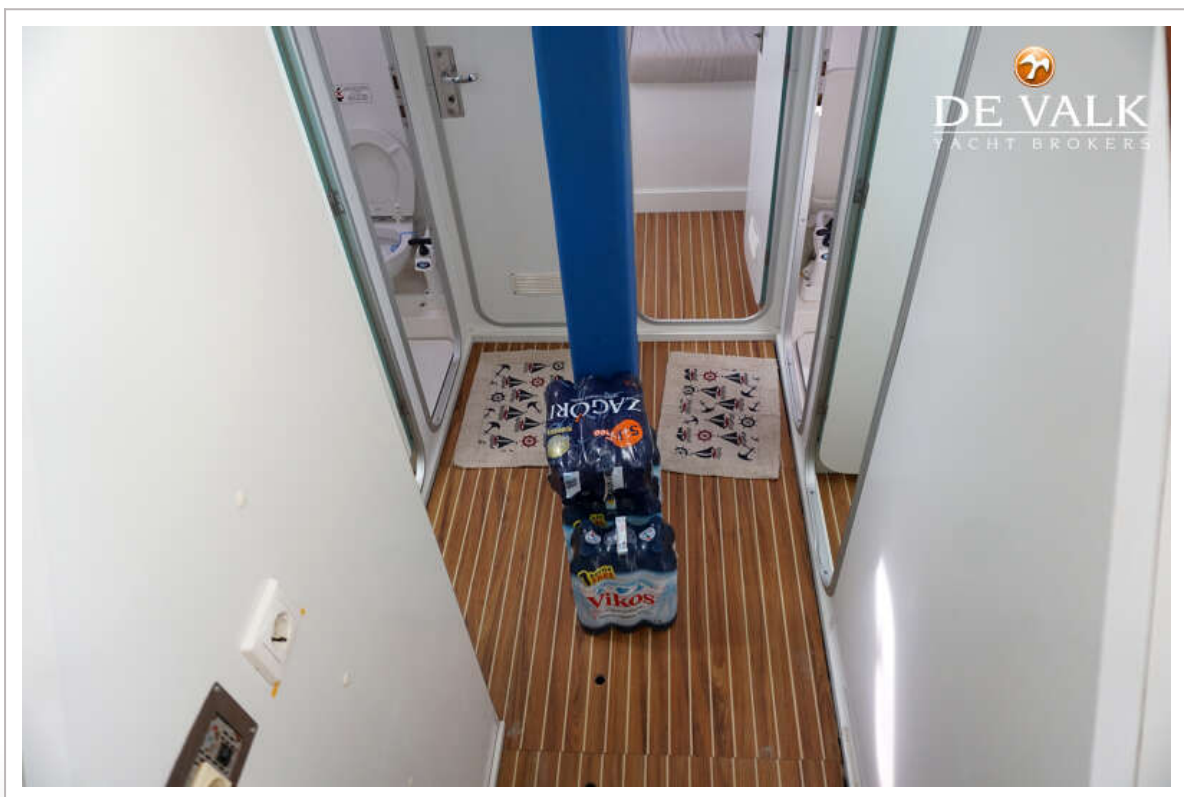
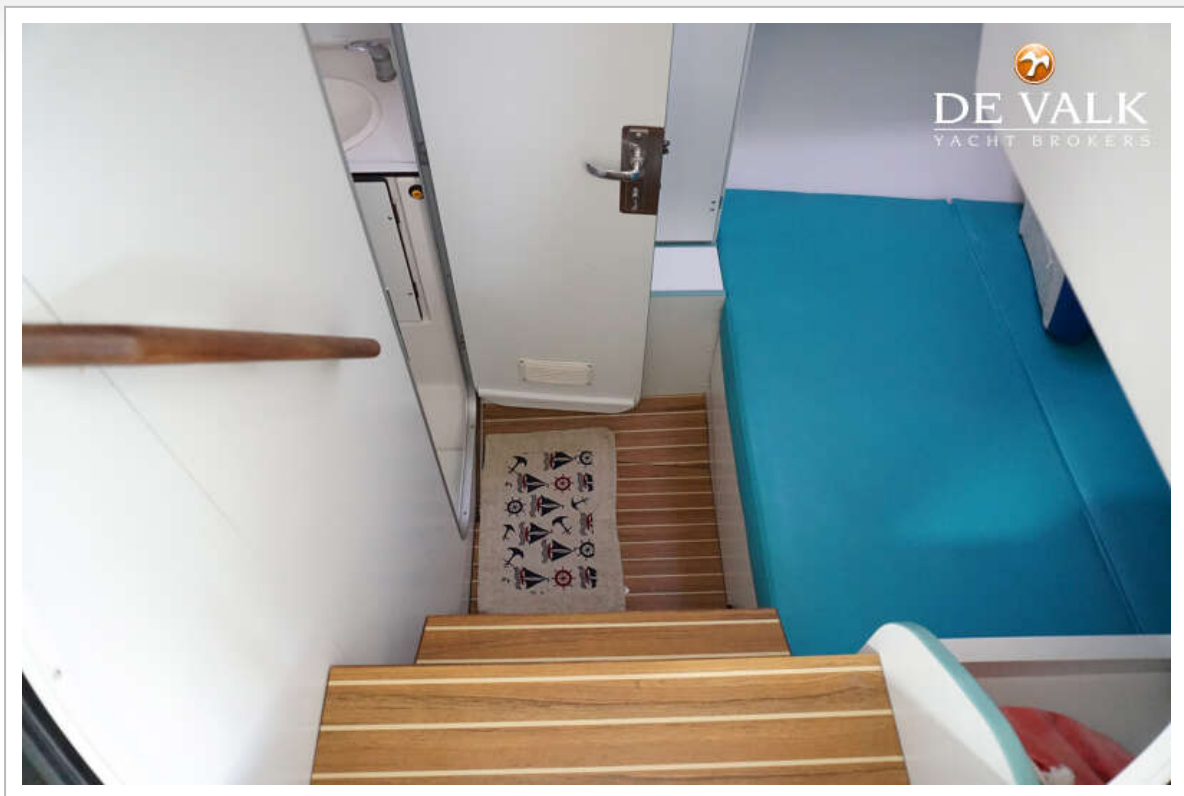








## DUFOUR ATOLL 6





# DUFOUR ATOLL 6



## DUFOUR ATOLL 6

