



DE VALK
YACHT BROKERS



BAVARIA 37 CRUISER



DE VALK
YACHT BROKERS

BAVARIA 37 CRUISER

BROKER'S COMMENTS

This Bavaria 37 has a practical layout and light interior. She is equipped with a bowthruster and stoway-mast for optimal and safe sailing comfort with good sailing characteristics under all circumstances. This Bavaria 37 has the necessary comfort on board, including two cabins, a spacious saloon, a spacious bathroom and plenty of storage space. The yacht is well maintained by her first and only (private) owner. This Bavaria 37 is now ready for a visit by us in Sint Annaland.

Joris van de Rijt

SPECIFICATIONS

Dimensions	11.35 x 3.80 x 1.85 (m)	Builder	Bavaria Yachtbau
Built	2005	Cabins	2
Material	GRP	Berths	6
Engine(s)	1 x Volvo Penta D1-30 diesel	Hp/Kw	27.00 (hp), 19.87 (kw)
Asking price	sold (VAT)	Lying	at sales office

CONTACT

Sales office	De Valk Sint Annaland B.V.	Telephone	+31 (0)166 601 000
Address	Koelhuisweg 4 4697 RM Sint Annaland NL	E-mail	sintannaland@devalk.nl

DISCLAIMER

These particulars are given in good faith as supplied but cannot be guaranteed.



BAVARIA 37 CRUISER

GENERAL

Model	BAVARIA 37 CRUISER
Type	sailing yacht
LOA (m)	11,35
Beam (m)	3,80
Draft (m)	1,85
Air draft (m)	17,50
Headroom (m)	1,90
Year built	2005
Builder	Bavaria Yachtbau
Country	Germany
Displacement (t)	8,5
CE norm	A
Hull material	GRP
Hull colour	white
Hull shape	round-bilged
Keel type	fin keel Cast Iron
Superstructure material	GRP
Rubbing strake	aluminum
Deck material	GRP
Deck finish	non-skid moulded in
Superstructure deck finish	non-skid moulded in
Cockpit deck finish	teak
Window frame	aluminium
Window material	perspex
Deckhatch	(deckhatch saloon new 2023)
Fuel tank (litre)	polyethylene 150
Level indicator (fuel tank)	yes
Freshwater tank (litre)	polyethylene 1 x 150 + 1 x 210
Level indicator (freshwater)	yes
Blackwater tank (litre)	polyethylene Not connected



BAVARIA 37 CRUISER

Blackwater tank extraction	deck extraction + uw line
Wheel steering	chain steering
Emergency tiller	yes
Extra info	Stains in upholstery are from old leakage about 15 years ago

ACCOMMODATION

Cabins	2
Berths	6
Interior	mahogany
Floor	woodprint
Saloon	yes
Headroom saloon (m)	1,90
Chart table	yes
Aft Cabin	yes
Dinette	yes
Galley	yes
Countertop	plastic
Sink	stainless steel
Cooker	calor gas 2 burner
Oven	yes
Fridge	Toploader
Hot water system	220V + engine
Water pressure system	electrical
Owners cabin	v-bed With Neptunus matrasses
Wardrobe	hanging and shelves
Bathroom	shared
Toilet	shared
Toilet system	manual
Wash basin	in the bathroom
Shower	shared
Guest cabin 1	double bed



BAVARIA 37 CRUISER

Wardrobe	hanging and shelves
----------	---------------------

MACHINERY

No of engines	1
Make	Volvo Penta
Type	D1-30
HP	27
kW	19.87
Fuel	diesel
Year installed	2005
Engine hours	Defect
Engine cooling system	freshwater heat exchanger
Drive	sail-drive
Saildrive seal	(new saildrive manchet 2022)
Engine controls	bowden cable
Bowthruster	electric Side Power SP75
Propeller type	folding + spare propeller (fixed)
Propeller blades	3
Manual bilge pump	yes
Electric bilge pump	yes
Electrical installation	12V / 220V
Start battery	(new 2022)
Service battery	2 x 140 Ah (new 2020)
Bowthruster battery	Optima red top (new 2021)
Battery monitor	yes
Battery charger/inverter	Victron multiplus 12/800/35
Shorepower	with cable

NAVIGATION

Compass	Plastimo
Depth sounder	Raymarine ST60



BAVARIA 37 CRUISER

Log	Raymarine ST60
Windset	Raymarine ST60
VHF	Navman VHF 7110
Autopilot	Raymarine ST6001
Rudder angle indicator	Via autopilot
Plotter	Raymarine C70
Electronic chart(s)	yes
Navigation lights	yes

EQUIPMENT

Sprayhood	yes
Cockpit table	yes
Bathing platform	yes
Boarding ladder	stainless steel
Deck shower	Hot & cold on swimming platform
Anchor	CQR Plough
Anchor chain	yes
Outboard support	yes
Sea railing	wire
Grab rail (superstructure)	stainless steel
Pushpit	yes
Pulpit	yes
Lifebuoy	yes
Radar reflector	yes
Fenders	yes
Mooring lines	yes
Clock - barometer	yes
Fire extinguisher	Needs survey
Extra info	New cockpit console cover 2015

RIGGING



BAVARIA 37 CRUISER

Rigging	fractional
Standing rigging	wire
Brand mast	Seldén
Material mast	aluminium
Spreaders	2 sets
Mainsail	(2005)
Stoway mast	yes
Genoa	(2005)
Genoa furler	Furlex 200S
Genoa cover	(new 2016)
Reefing System	main in-mast furling
Backstay adjuster	tackle
Boomvang	gasspring Selden
Genoa sheetwinches	2 x Lewmar 40st
Halyard winches	2 x Lewmar 30st



BAVARIA 37 CRUISER



BAVARIA 37 CRUISER



BAVARIA 37 CRUISER



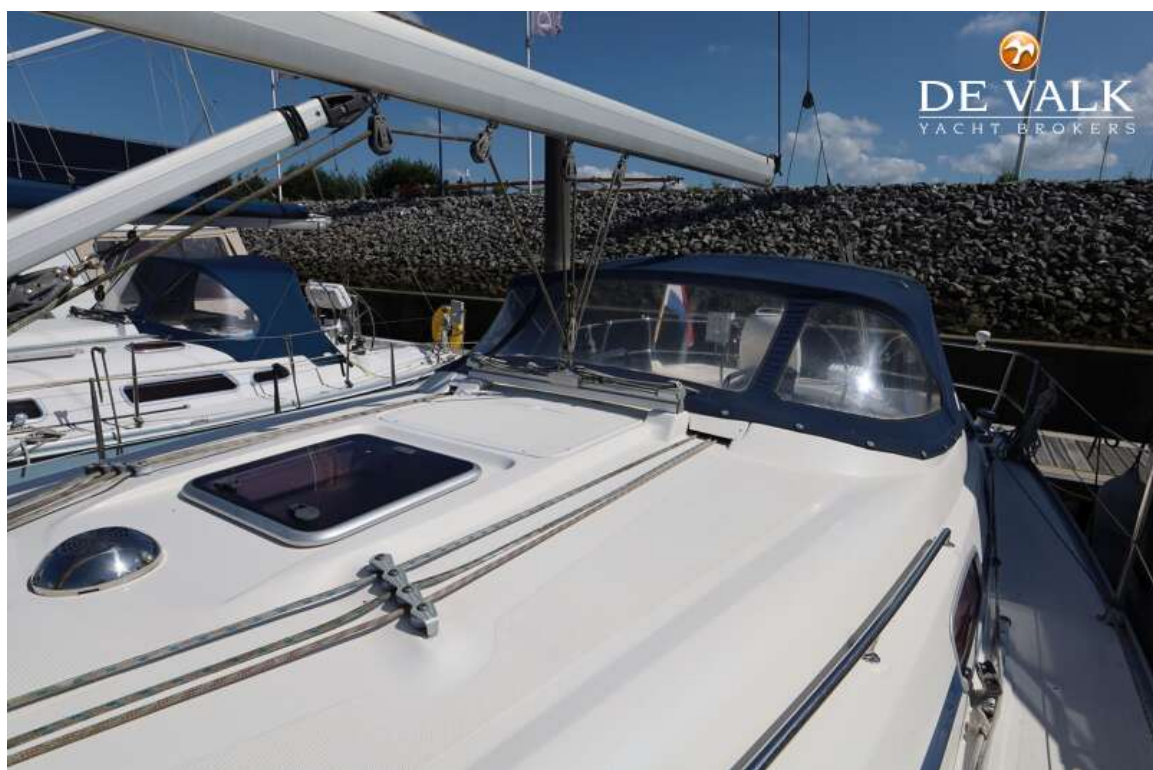
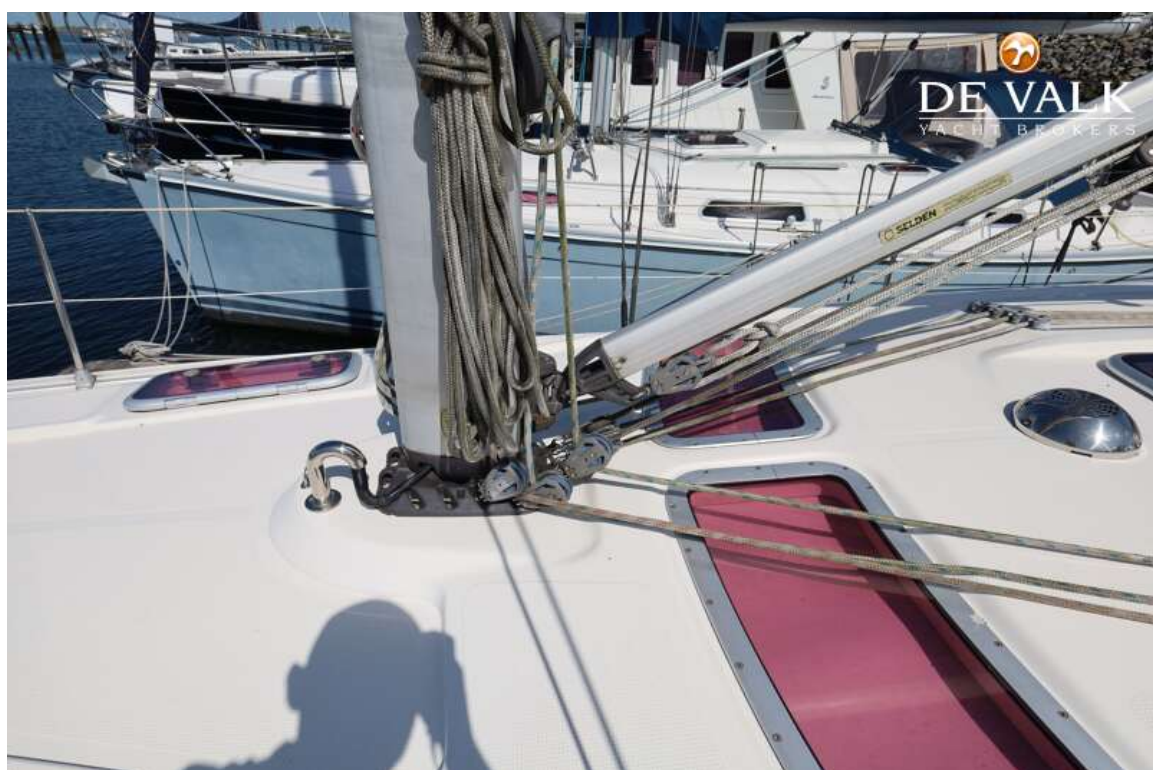
BAVARIA 37 CRUISER



BAVARIA 37 CRUISER



BAVARIA 37 CRUISER



BAVARIA 37 CRUISER



BAVARIA 37 CRUISER



BAVARIA 37 CRUISER



BAVARIA 37 CRUISER



BAVARIA 37 CRUISER



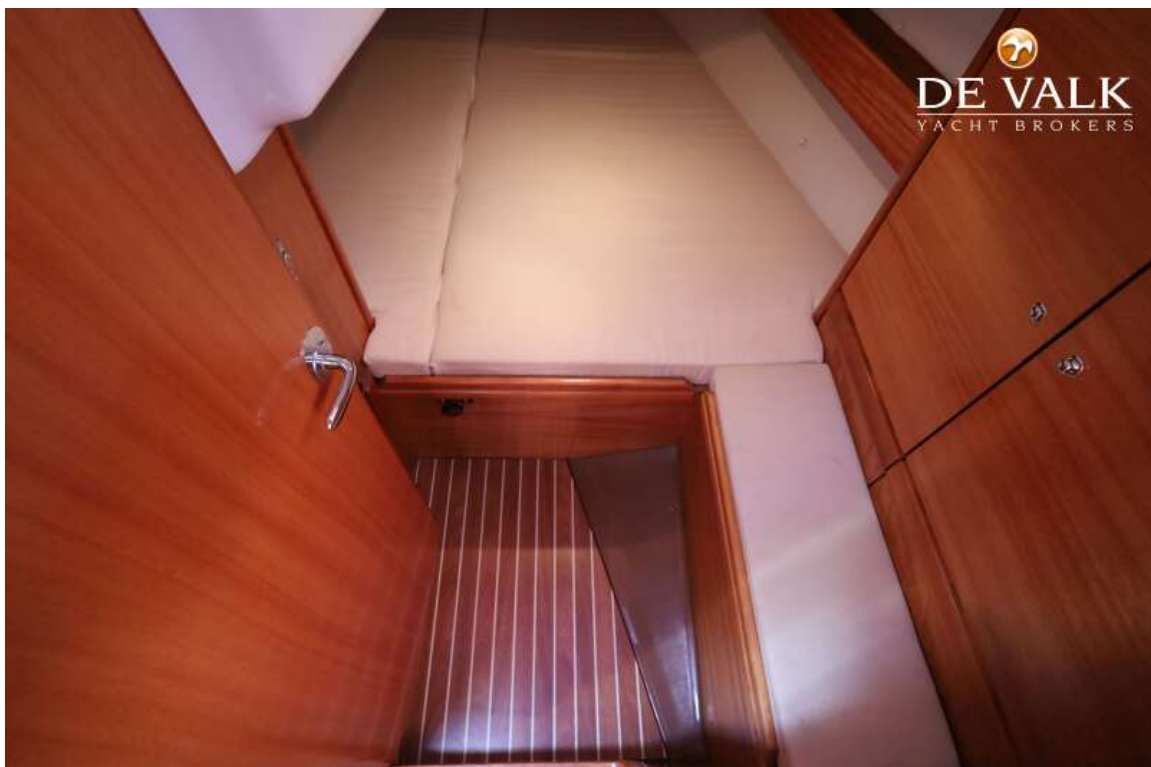
BAVARIA 37 CRUISER



BAVARIA 37 CRUISER



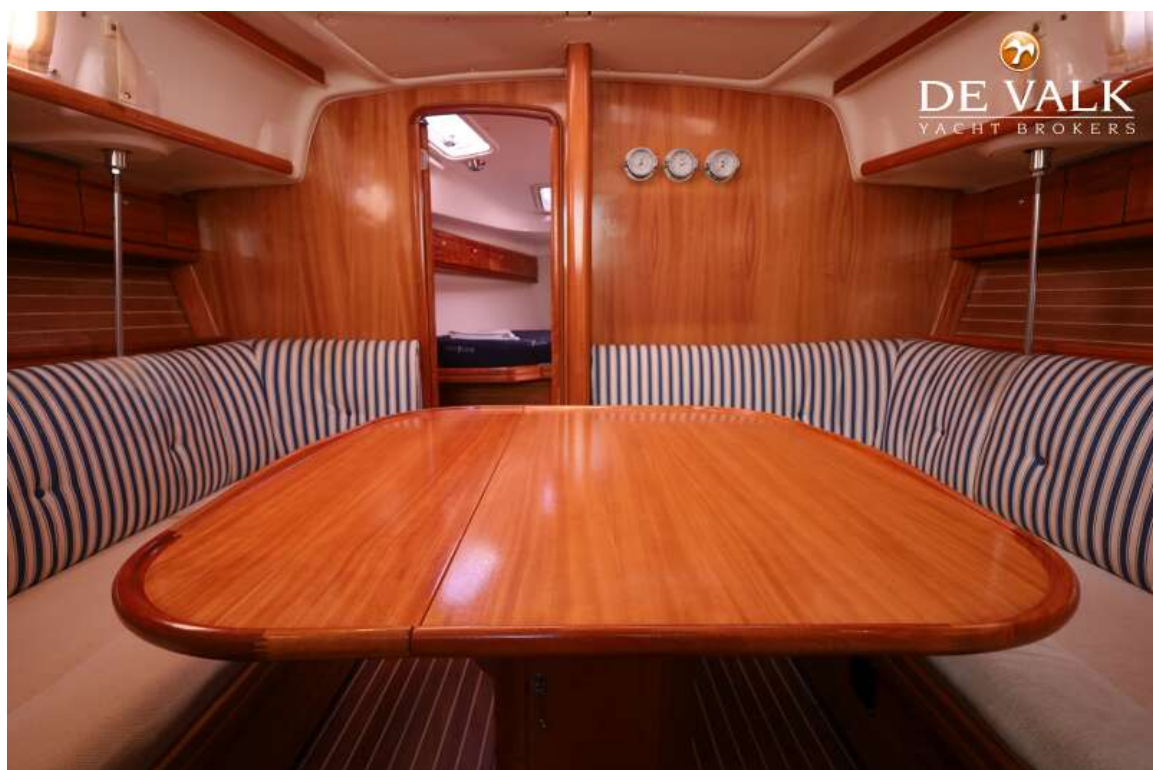
BAVARIA 37 CRUISER



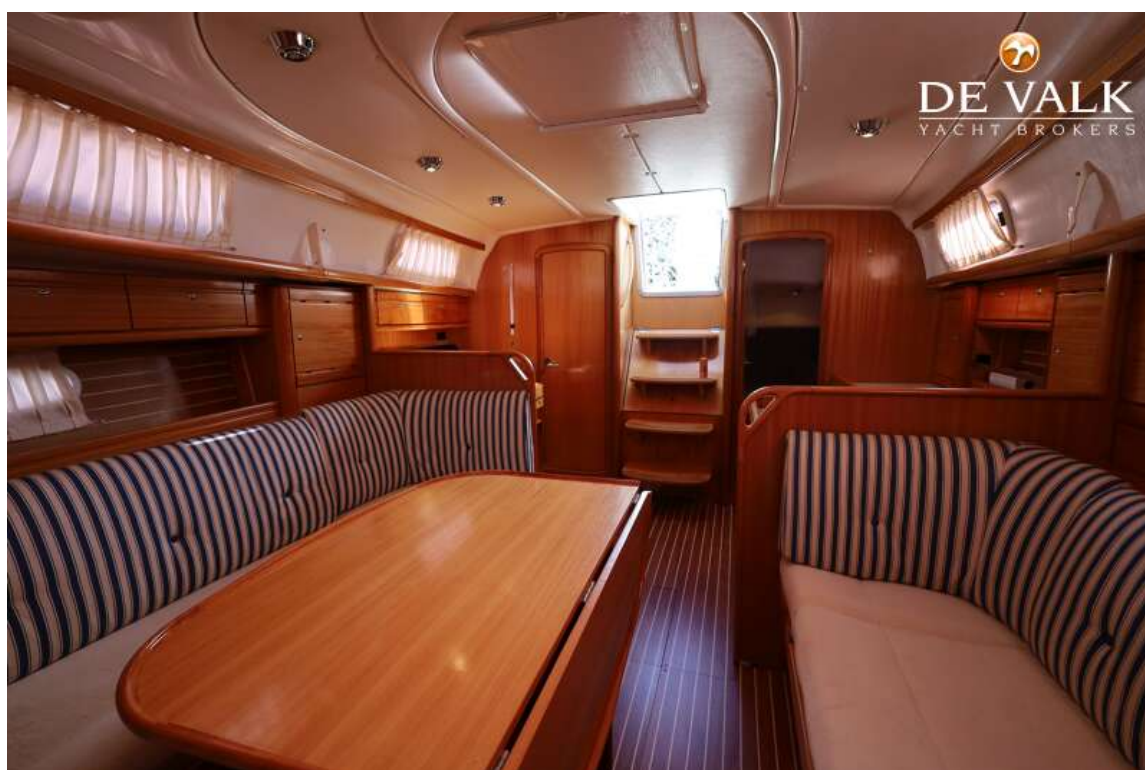
BAVARIA 37 CRUISER



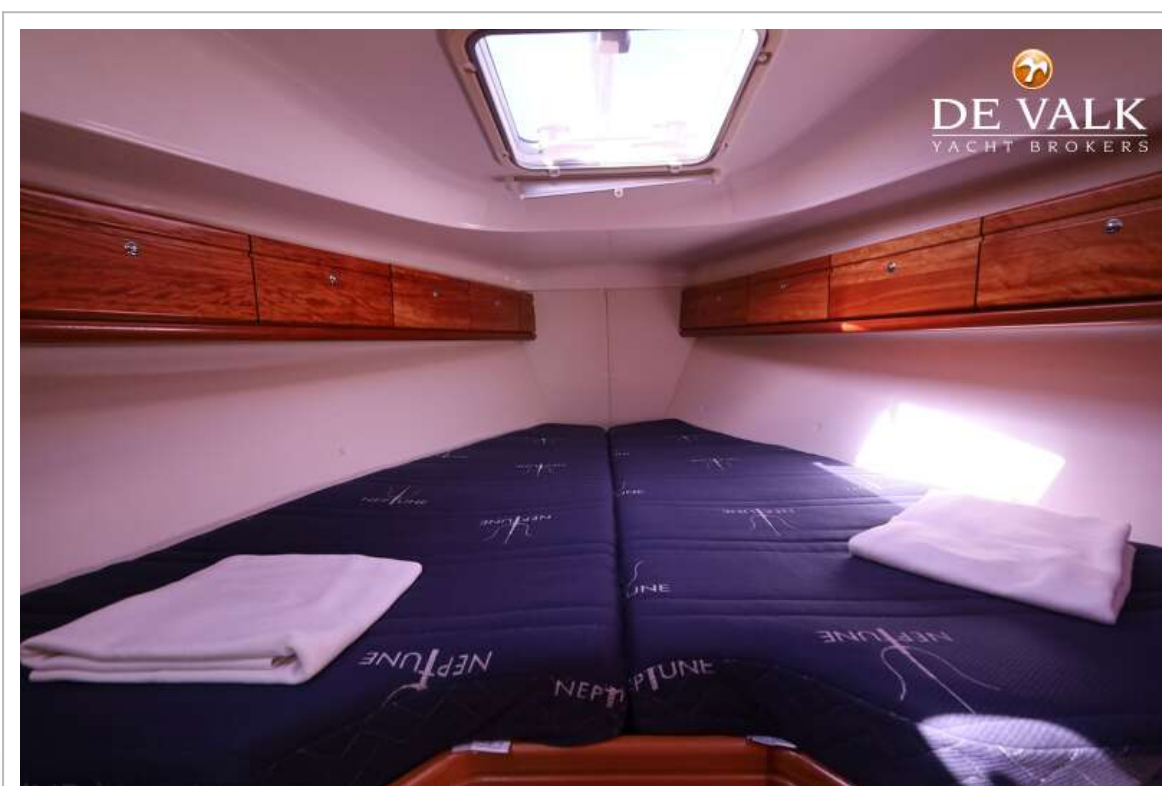
BAVARIA 37 CRUISER



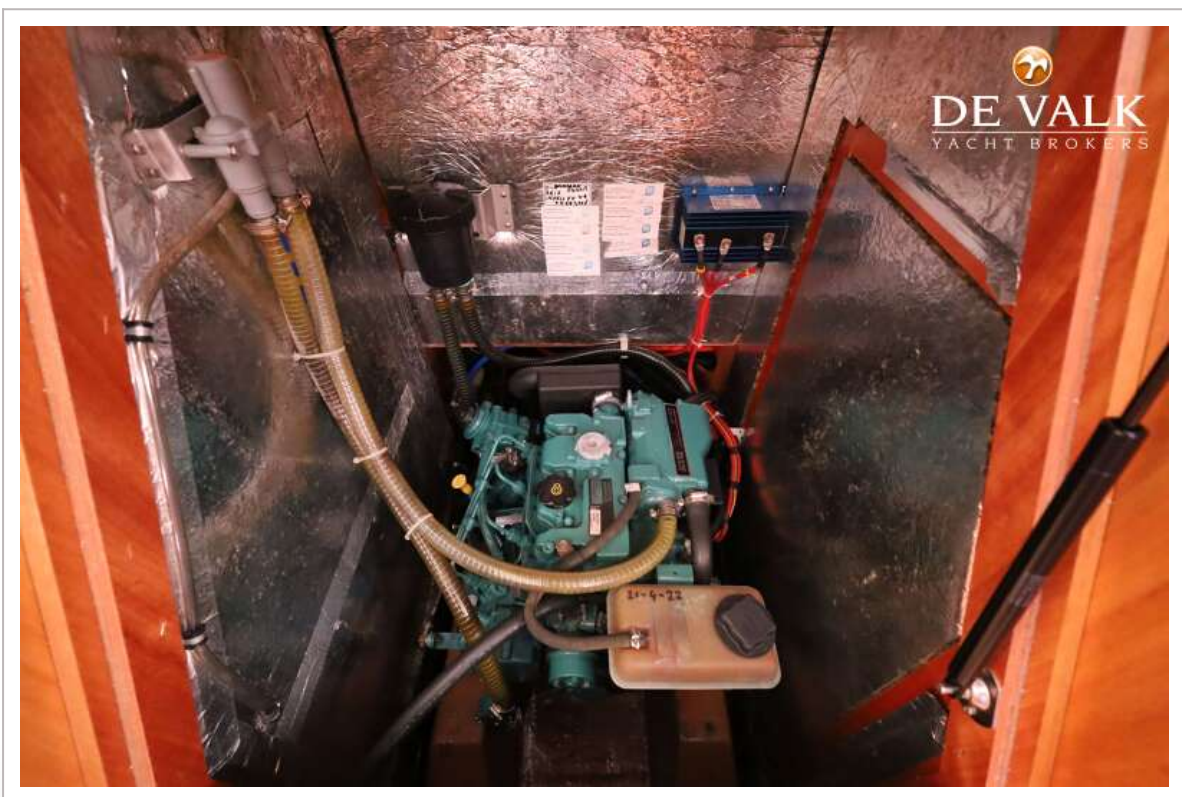
BAVARIA 37 CRUISER



BAVARIA 37 CRUISER



BAVARIA 37 CRUISER



BAVARIA 37 CRUISER

