



## RIVA 59 MERCURIUS SUPER

# RIVA 59 MERCURIUS SUPER

## BROKER'S COMMENTS

The Riva 59 will be auctioned online at Bright Auctions. Bids can only be placed online at Bright Auctions. All information about the auction is available on the website <https://bit.ly/4qGm1E4> This third-owner Riva 59 has always operated in freshwater and offers three cabins with full-size beds for up to seven guests. The tender garage houses a Williams 285 Turbojet, launched via hydraulic gangway for effortless watersports. Elegant Italian styling, a spacious open cockpit and full air-conditioning make this yacht ideal for luxury Mediterranean cruising.

*Julian de Heer*

## SPECIFICATIONS

<b>Dimensions</b>	18.05 x 4.73 x 1.60 (m)	<b>Builder</b>	Riva S.P.A.
<b>Built</b>	2004	<b>Cabins</b>	3
<b>Material</b>	GRP	<b>Berths</b>	7
<b>Engine(s)</b>	2 x MAN D2840LE403 diesel	<b>Hp/Kw</b>	2 x 1,050.00 (hp), 772.80 (kw)
<b>Asking price</b>	€ 100.000 (VAT Paid)	<b>Lying</b>	at sales office

## CONTACT

<b>Sales office</b>	De Valk Loosdrecht B.V.	<b>Telephone</b>	+31 (0)35 582 90 30
<b>Address</b>	't Breukeleveense Meentje 6 1231LM Loosdrecht / Wijdmeren NL	<b>E-mail</b>	loosdrecht@devalk.nl

## DISCLAIMER

These particulars are given in good faith as supplied but cannot be guaranteed.



# RIVA 59 MERCURIUS SUPER

## GENERAL

Model	RIVA 59 MERCURIUS SUPER
Type	motor yacht
LOA (m)	18,05
Beam (m)	4,73
Draft (m)	1,60
Air draft (m)	3,46
Air draft min (m)	2,96
Year built	2004
Builder	Riva S.P.A.
Country	Italy
Displacement (t)	29,5
CE norm	A
Hull material	GRP
Hull colour	blue
Hull shape	Fast Displacement Hull
Superstructure material	GRP
Deck material	GRP
Deck finish	teak Replaced 2019
Superstructure deck finish	non-skid moulded in
Cockpit deck finish	teak
Antifouling (year)	2025
Window frame	stainless steel
Deckhatch	1x
Radar arch	non collapsible
Fuel tank (litre)	stainless steel 3300
Level indicator (fuel tank)	yes
Freshwater tank (litre)	stainless steel 700
Level indicator (freshwater)	Wema
Blackwater tank (litre)	stainless steel 300
Level indicator (blackwater)	yes



# RIVA 59 MERCURIUS SUPER

Blackwater tank extraction	pump
Greywater tank (litre)	stainless steel 150
Level indicator (greywater)	yes
Wheel steering	hydraulic
Outside helm position	hydraulic
Extra info	<p>The Riva Mercurius 59 is the perfect relaxation time in the Mediterranean. Here's why: * Deck and Features: The Riva Mercurius 59 is well-equipped for leisure. It has spacious sun loungers on the foredeck and a generous cockpit with a dining table and a wet bar, perfect for outdoor dining and socializing. The hydraulic swim platform and the tender garage allow for easy access to the water and water toys. The presence of a dishwasher, constant 220V, spacious refrigerators (both in the salon and on deck) and other kitchen amenities means less time on chores and more time for relaxation. * Performance: With powerful twin MAN diesel engines, the yacht has a cruising speed of about 20 to 35 knots. This allows you to cover significant distances efficiently to explore different islands and coastlines without spending a full day just traveling. Tender: Williams Turbojet S 285 Low Profile, 2016 Engine: Weber MPE 850, 100 hp Maximum speed: 90 km/h Tubes: Hypalon Dark Blue 0 Upholstery: Vinyl White Hull: Polyester, All White Deck: Polyester, All White Deck finish: Teak Removable steering wheel: Black 545</p>

## ACCOMMODATION

Cabins	3
Berths	7
Crew cabin	yes
Crew berths	1
Interior	Elm wood - Peach skin wood finish refurbished 2013-2019
Layout	yes
Floor	parquet And carpet
Open cockpit	yes
Saloon	yes
Air-conditioning	reverse cycle airco Tropical Central Airconditioning 48.000 BTU



# RIVA 59 MERCURIUS SUPER

Dinette	yes
Sliding door to cockpit	yes
Galley	yes
Countertop	corian
Sink	yes
Cooker	induction Bosch 4 burner
Microwave/oven combi	Sharp
Fridge	2x Frigonautica
Freezer	Frigonautica
Hot water system	220V
Water pressure system	electrical
Dishwasher	Bosch
Owners cabin	double bed
Bed length (m)	2,00 x 1,60 m
Wardrobe	hanging/drawers/shelves
Bathroom	en suite
Toilet	en suite
Toilet system	electric
Wash basin	in the bathroom
Shower	en suite
Extra info	yes
Guest cabin 1	double bed
Bed length (m)	2,00 x 1,60 m
Wardrobe	hanging/drawers/shelves
Bathroom	shared
Toilet	shared
Toilet system	electric
Wash basin	in the bathroom
Shower	shared
Guest cabin 2	bunk bed
Bed length (m)	2x 2,00 x 0,80 m
Wardrobe	hanging



# RIVA 59 MERCURIUS SUPER

Bathroom	shared
Toilet	shared
Toilet system	electric
Wash basin	in the bathroom
Shower	shared
Crew cabin(s)	1x
Bathroom (crew)	en suite
Toilet (crew)	in the bathroom
Toilet system	electric
Wash basin	in the bathroom
Shower (crew)	in the bathroom
Extra info	Hanging and drawers
Wet bar	Spacious wet bar with stainless steel sink, grille and fridge
Tender garage	Besenzoni Hydraulic garage door

## MACHINERY

No of engines	2
Make	MAN
Type	D2840LE403
HP	1050
kW	772.80
Fuel	diesel
Maximum speed (kn)	36
Cruising speed (kn)	22
Engine hours	+/- 1500
Engine cooling system	freshwater heat exchanger
Drive	V-drive
Engine controls	electrical
Gearbox	hydraulic ZF
Bowthruster	electric Side-power
Exhaust	watercooled



# RIVA 59 MERCURIUS SUPER

Propeller type	fixed
Propeller shaft material	stainless steel
Shaft lubrication	water
Electric bilge pump	6x
Bilge alarm	yes
Generator	wet exhaust Kohler 15.5kW
Running hours generator	1991
Start battery	4x 180Ah
Service battery	4x 180Ah
Bowthruster battery	yes
Battery monitor	Whisperpower
Battery charger	Dolphin 24V/100A
Inverter	Whisperpower 24V/3500W
Shorepower	with cable
Insulation transformer	yes
Trimtabs	yes
Extra info	Drift speed: 7 km/h Economical cruising speed: 10 knots
Extra info	Watchdog alarm system: The Riva Mercurius 59 Super is positioned at the absolute pinnacle of open-yacht luxury. Not merely a design icon, but a high-value asset offering complete peace of mind. Thanks to the integrated 24/7 Intelligent Watchdog System, the yacht is continuously monitored: engine and ambient temperatures, bilge pump activity, and battery status are tracked in real time. Any irregularity triggers an instant diagnostic report. The result: global oversight, proactive maintenance, and total assurance — wherever the owner may be.

## NAVIGATION

Electric compass	Raymarine 2015
Multi control display	Raymarine E165 Hybridtouch Multi-function 2015
Depth sounder/log	Raymarine 2015
VHF	Raymarine 2015



# RIVA 59 MERCURIUS SUPER

Autopilot	Raymarine Evo Autopilot 2015
Rudder angle indicator	Raymarine 2015
Radar	Raymarine RA1048D Digital Array
GPS	Raymarine 2015
Wifi antenna	yes
AIS receiver	Raymarine AIS 2015
AIS transponder	Raymarine AIS 2015
Camera	yes
Navigation lights	yes
Searchlight	Sanshin

## EQUIPMENT

Fixed windscreen	yes
Sprayhood	yes
Cockpit cover	yes
Bimini	Hydraulic
Winter cover	yes
Window cover	yes
Cockpit cushions	yes
Cockpit table	yes
Bathing platform	Teak deck finish (2014)
Boarding ladder	stainless steel
Gangway	also used for launching the dinghy. Berezoni hydraulic
Deck shower	yes
Anchor	Quick
Anchor chain	Digital chain counter
Windlass	electrical
Capstan	yes
Dinghy	rigid inflatable Williams Turbojet S 285 - 100hp - 90km/h top
Deck crane	hydraulic
Sea railing	stainless steel





# RIVA 59 MERCURIUS SUPER

Wiper	2x
Horn	electric
Fenders	yes
Mooring lines	yes
TV	2x Sharp
Radio-cd player	Samsung
Surround Sound System	Bose
Cockpit speakers	Bose
Speakers in salon	B&O
Speakers in cabin	B&O



# RIVA 59 MERCURIUS SUPER



# RIVA 59 MERCURIUS SUPER





# RIVA 59 MERCURIUS SUPER



# RIVA 59 MERCURIUS SUPER





# RIVA 59 MERCURIUS SUPER

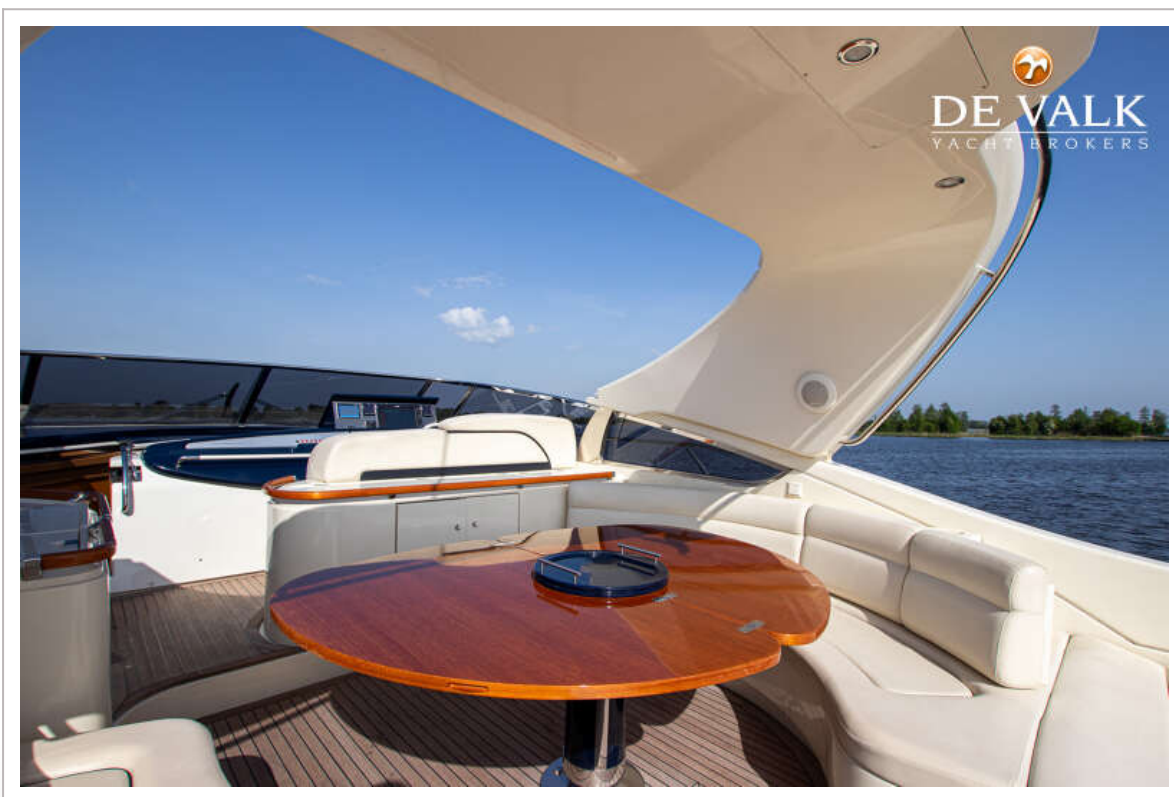
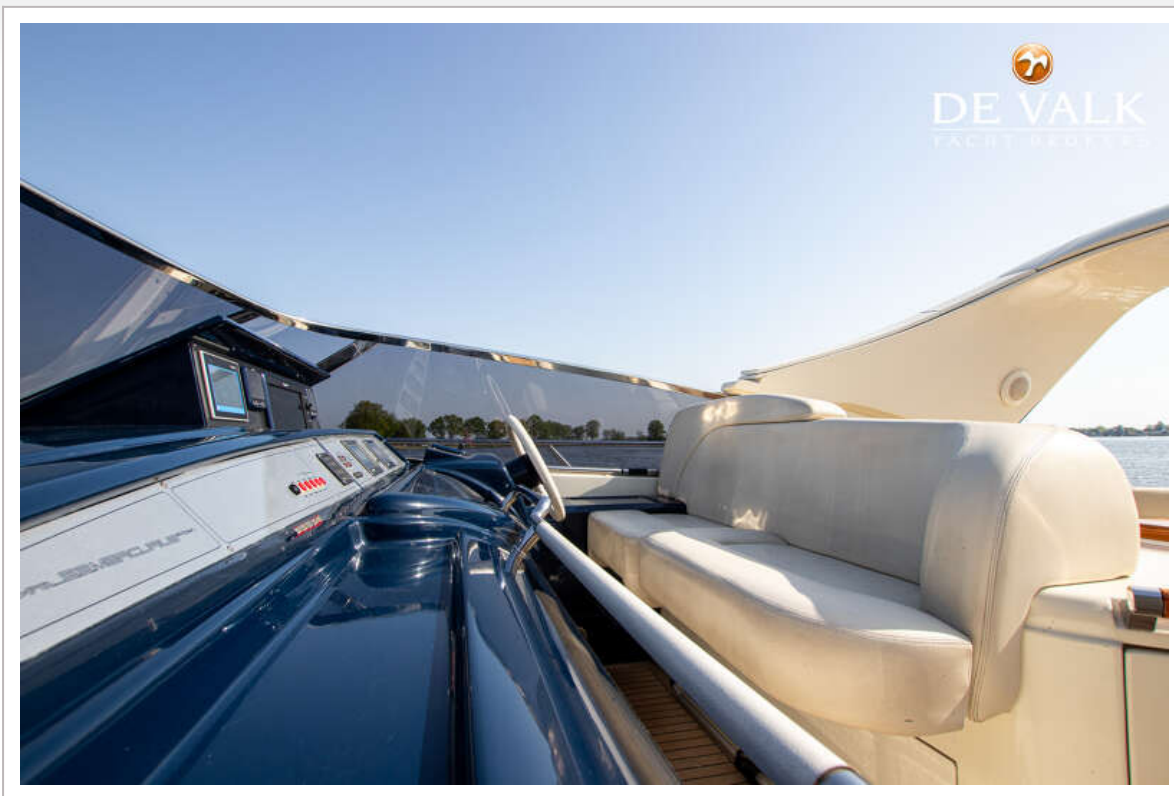


# RIVA 59 MERCURIUS SUPER



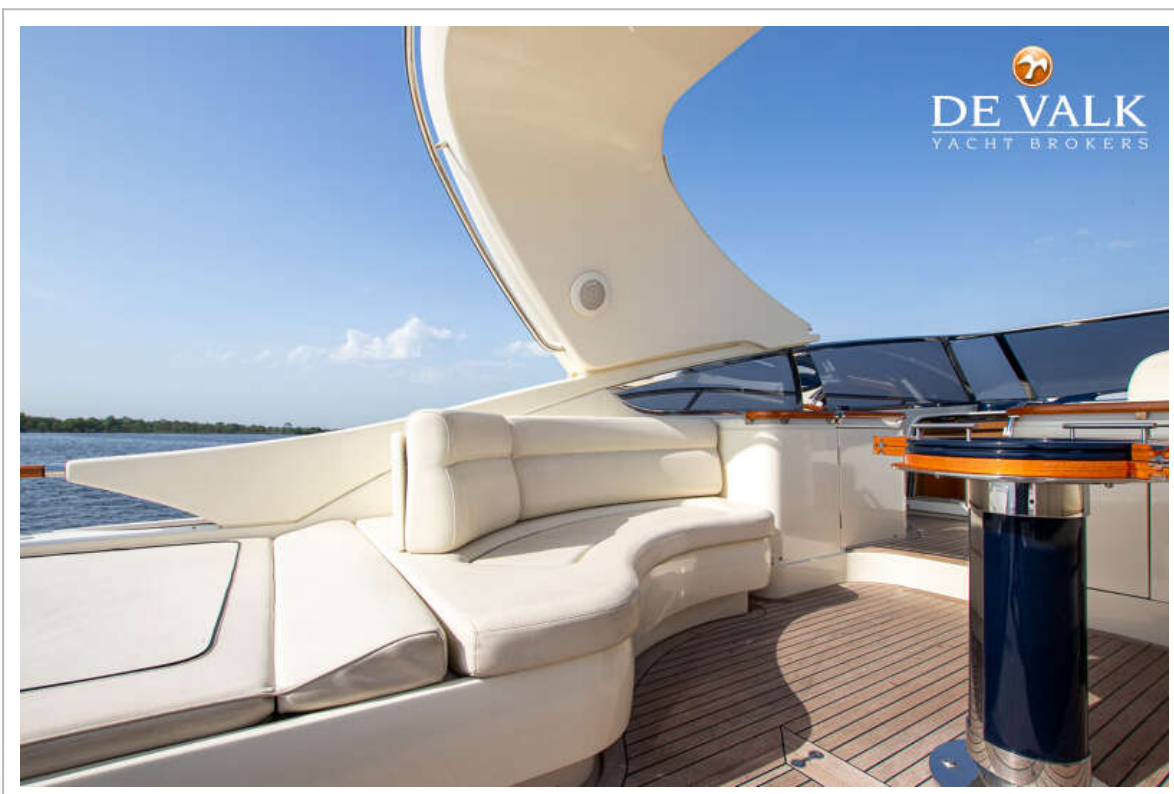


# RIVA 59 MERCURIUS SUPER

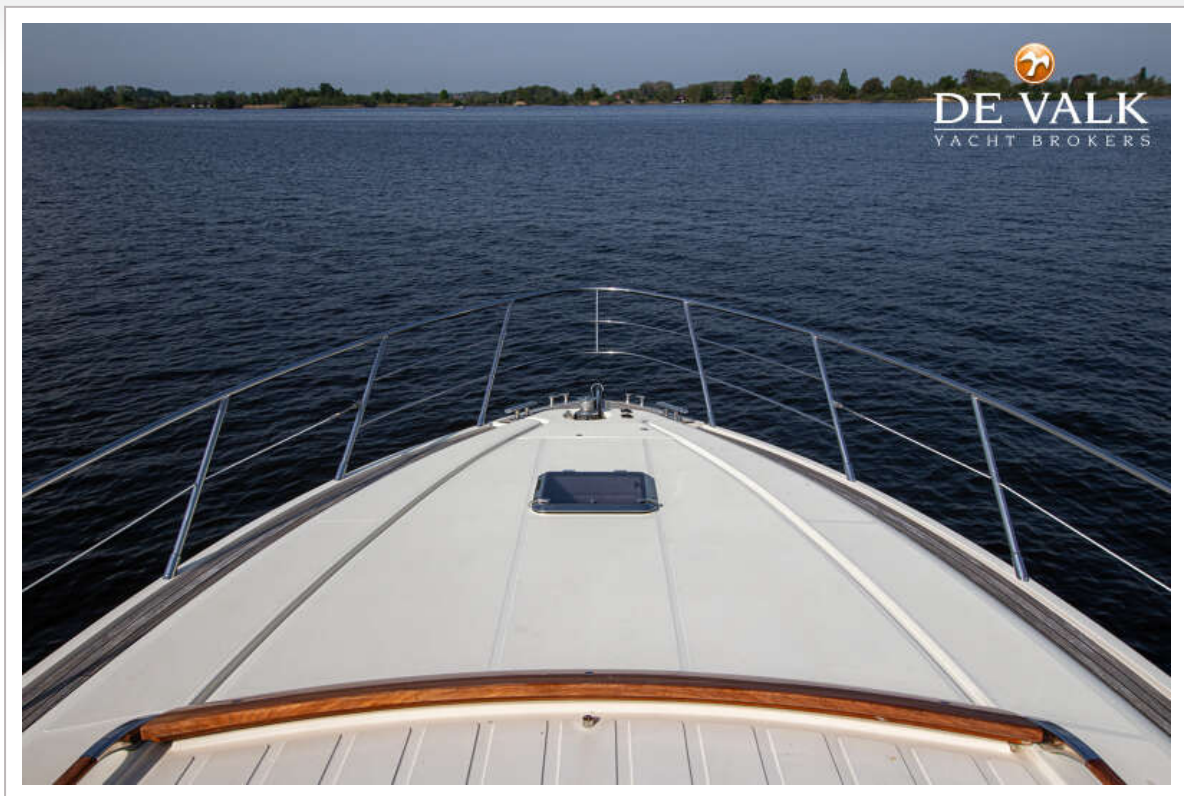




# RIVA 59 MERCURIUS SUPER

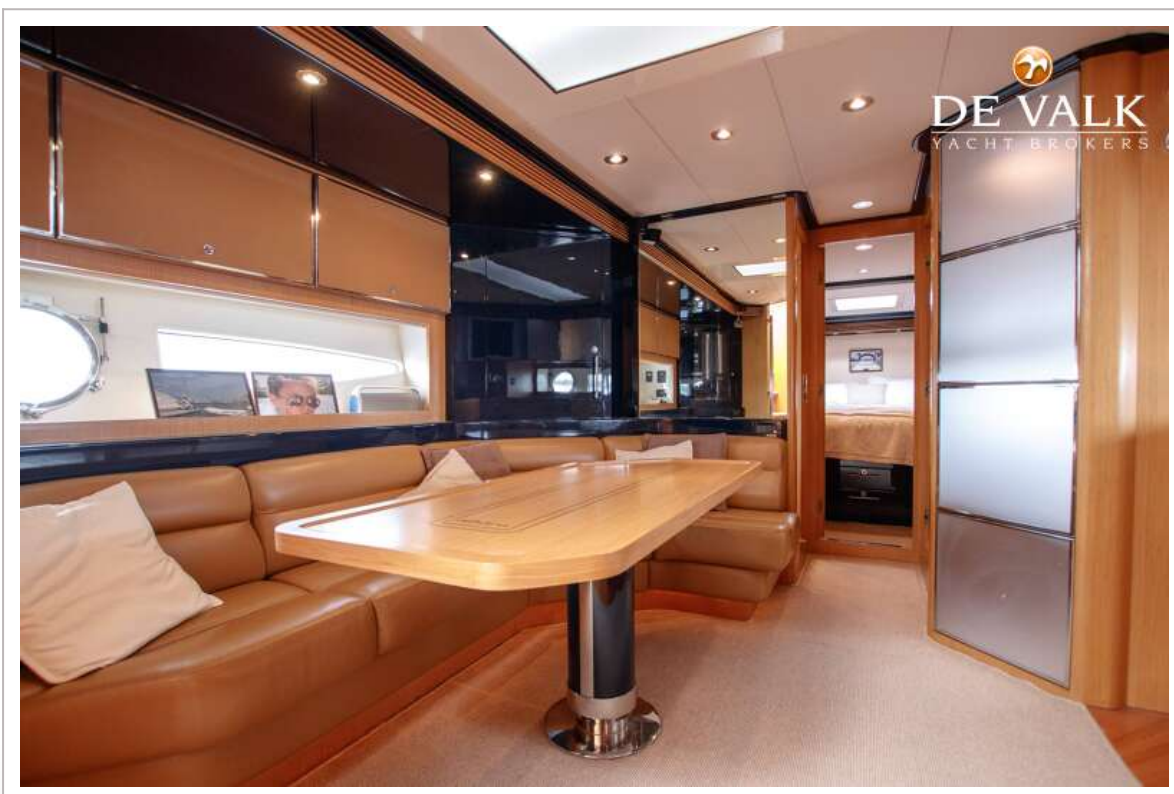
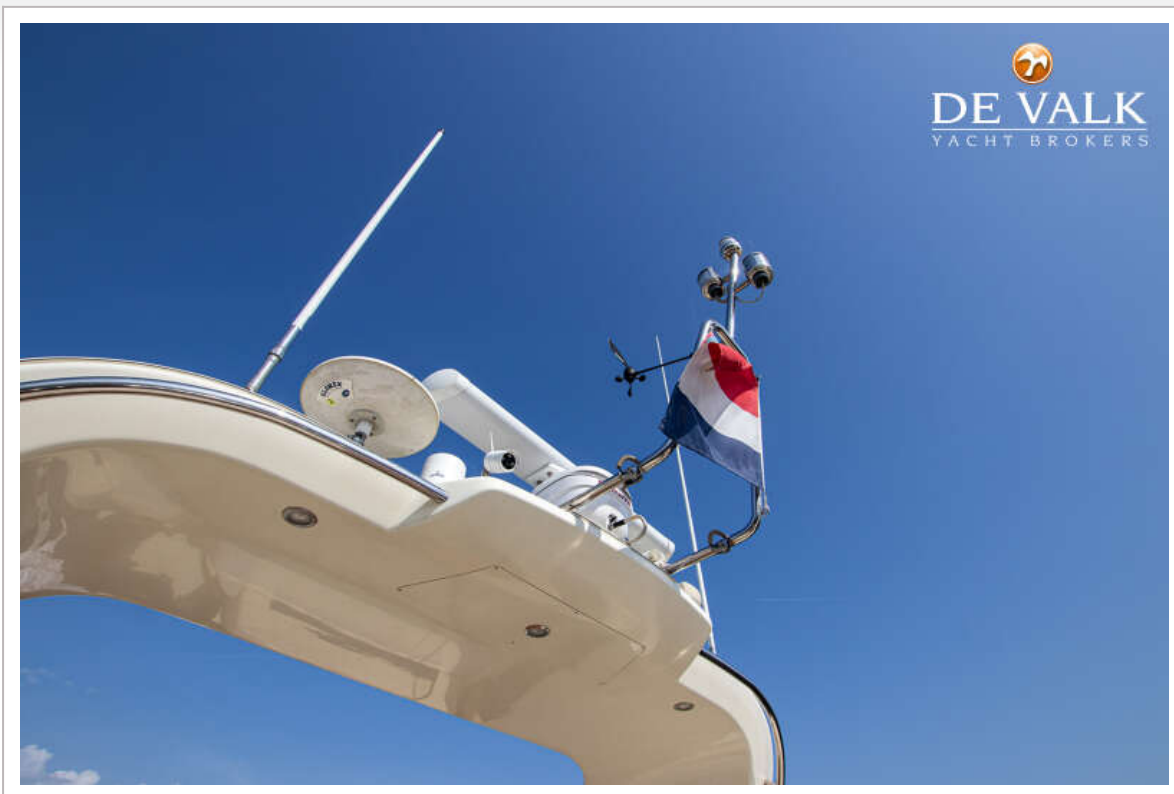


# RIVA 59 MERCURIUS SUPER

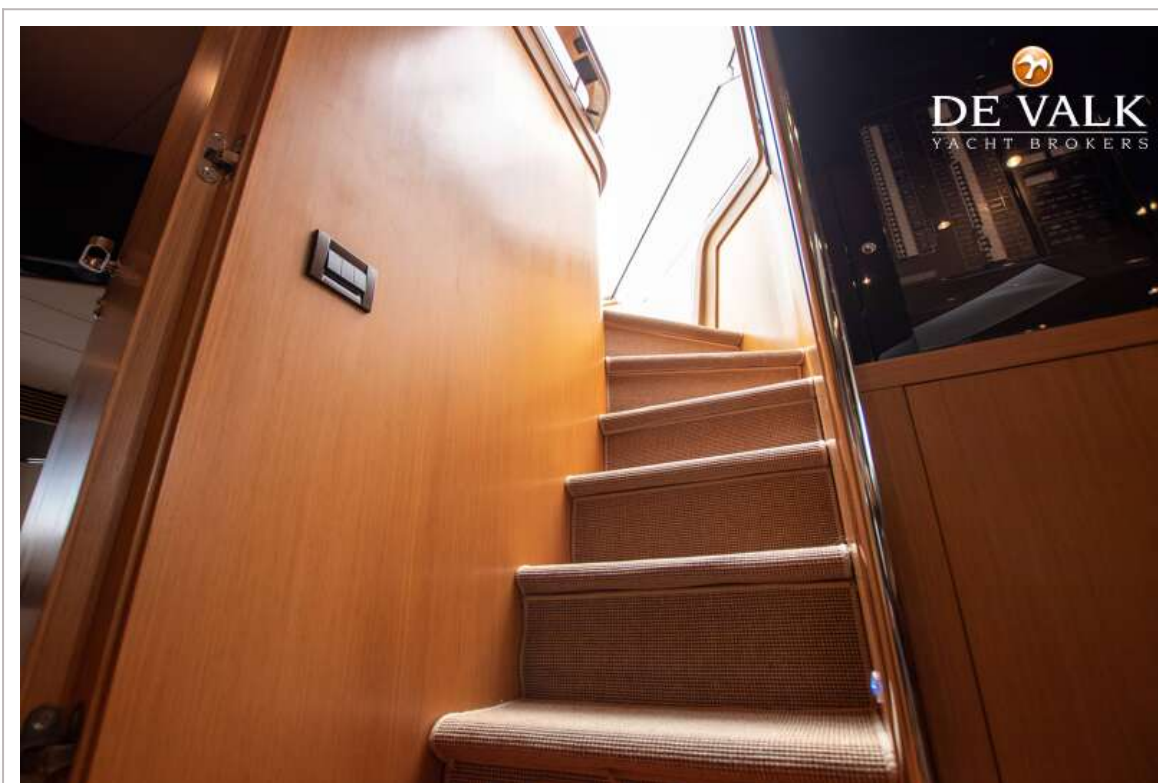




# RIVA 59 MERCURIUS SUPER



# RIVA 59 MERCURIUS SUPER





## RIVA 59 MERCURIUS SUPER



# RIVA 59 MERCURIUS SUPER



## RIVA 59 MERCURIUS SUPER





## RIVA 59 MERCURIUS SUPER

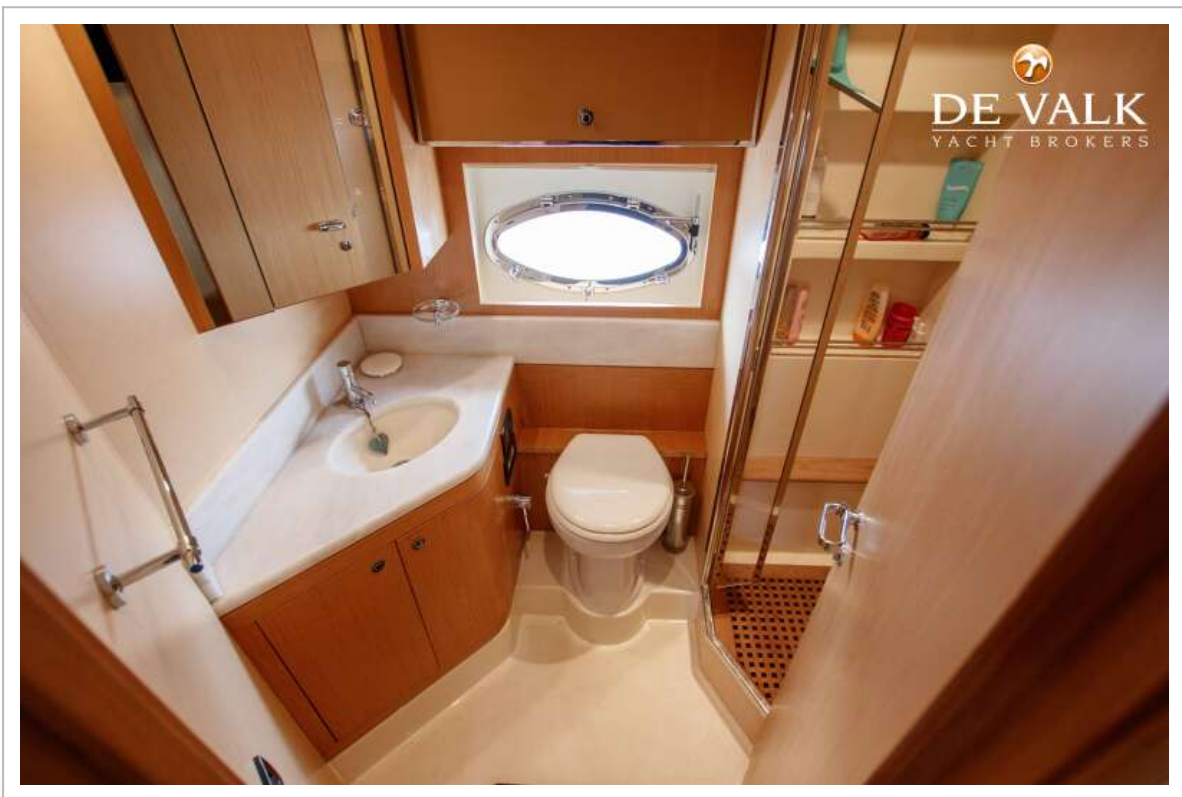




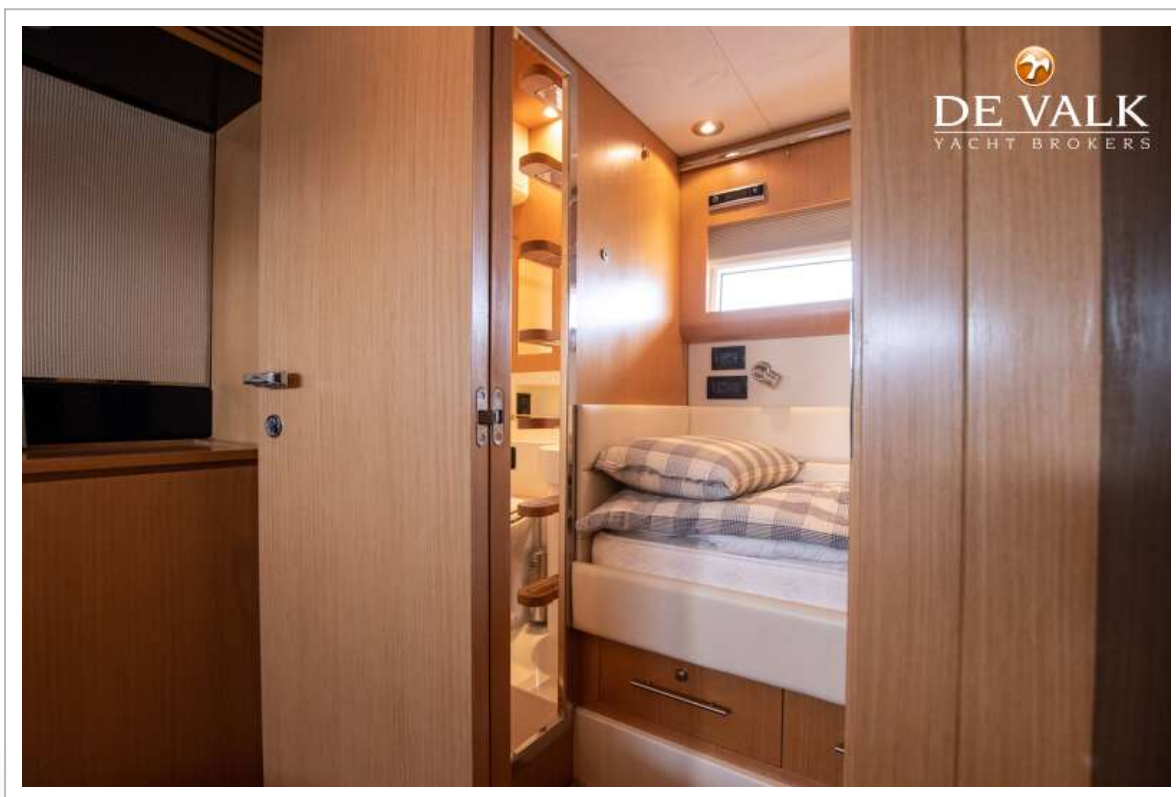
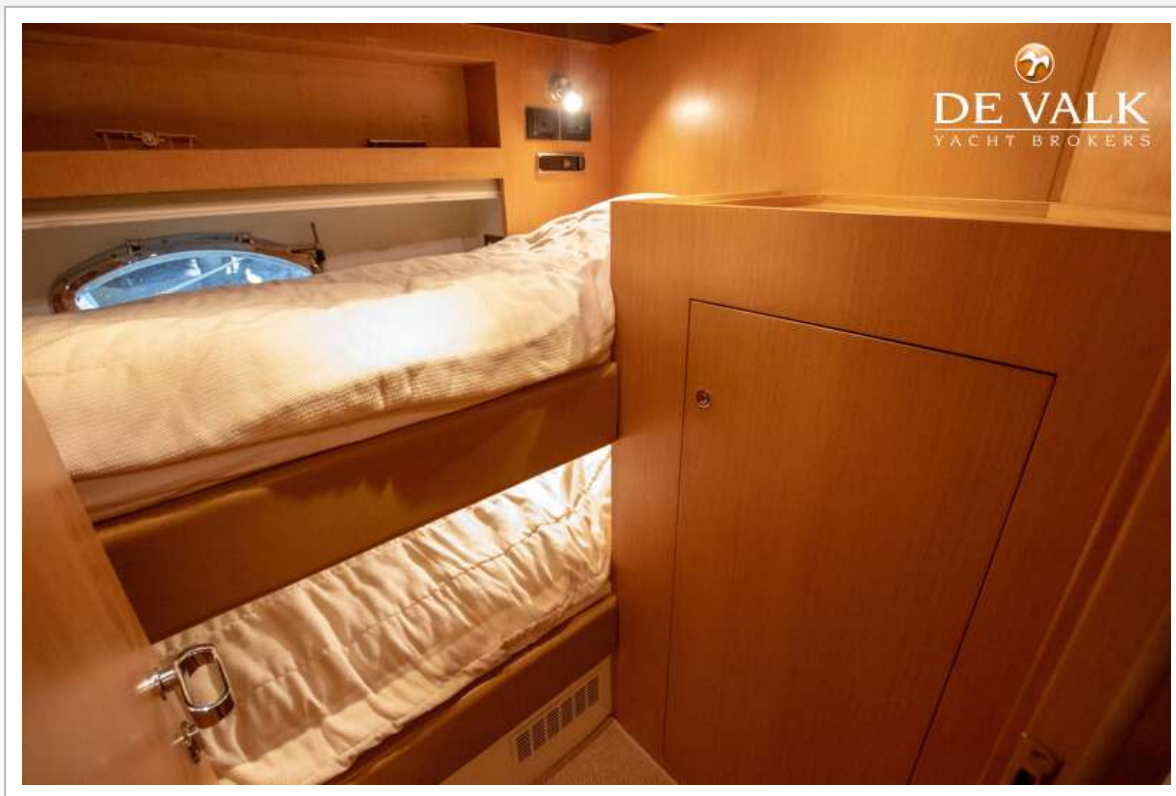
## RIVA 59 MERCURIUS SUPER



## RIVA 59 MERCURIUS SUPER

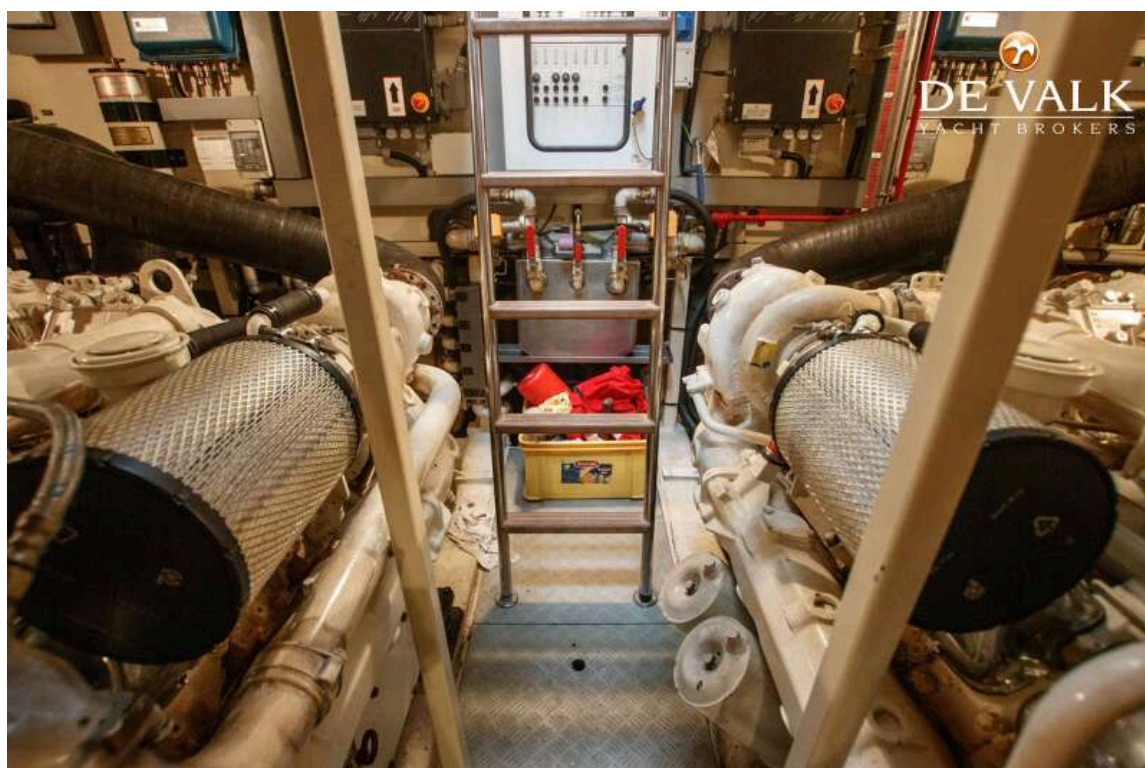


## RIVA 59 MERCURIUS SUPER





## RIVA 59 MERCURIUS SUPER



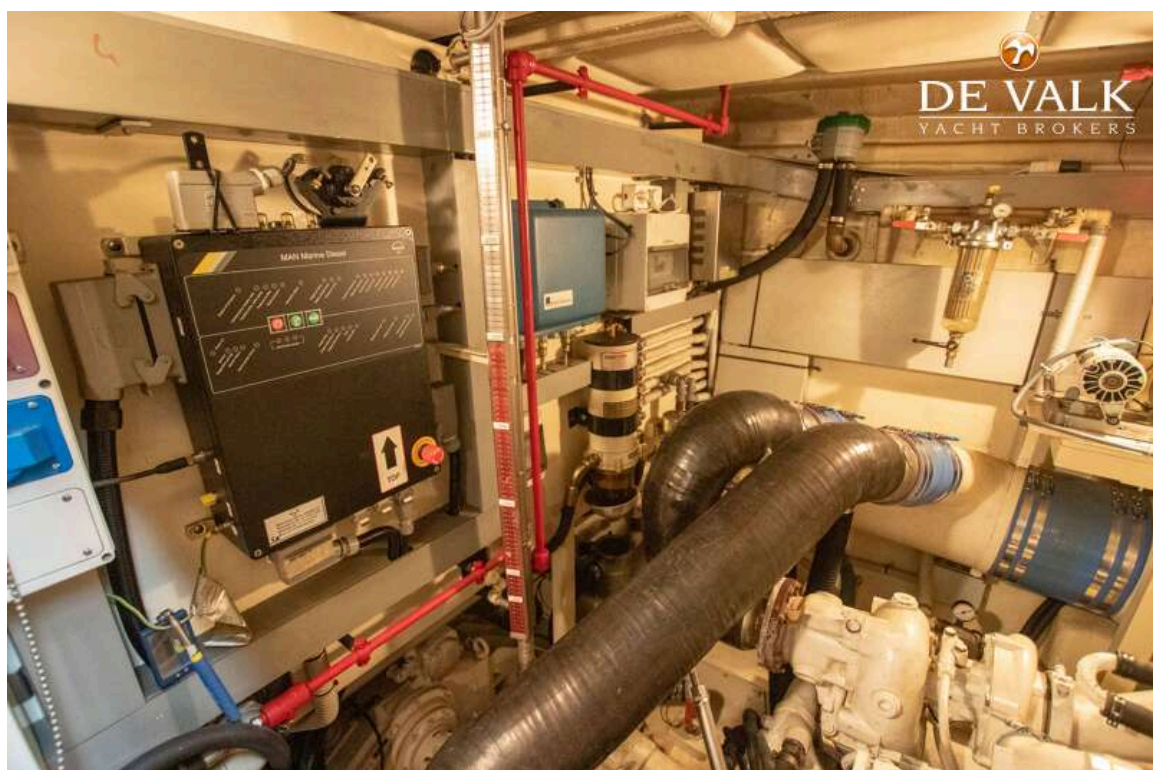
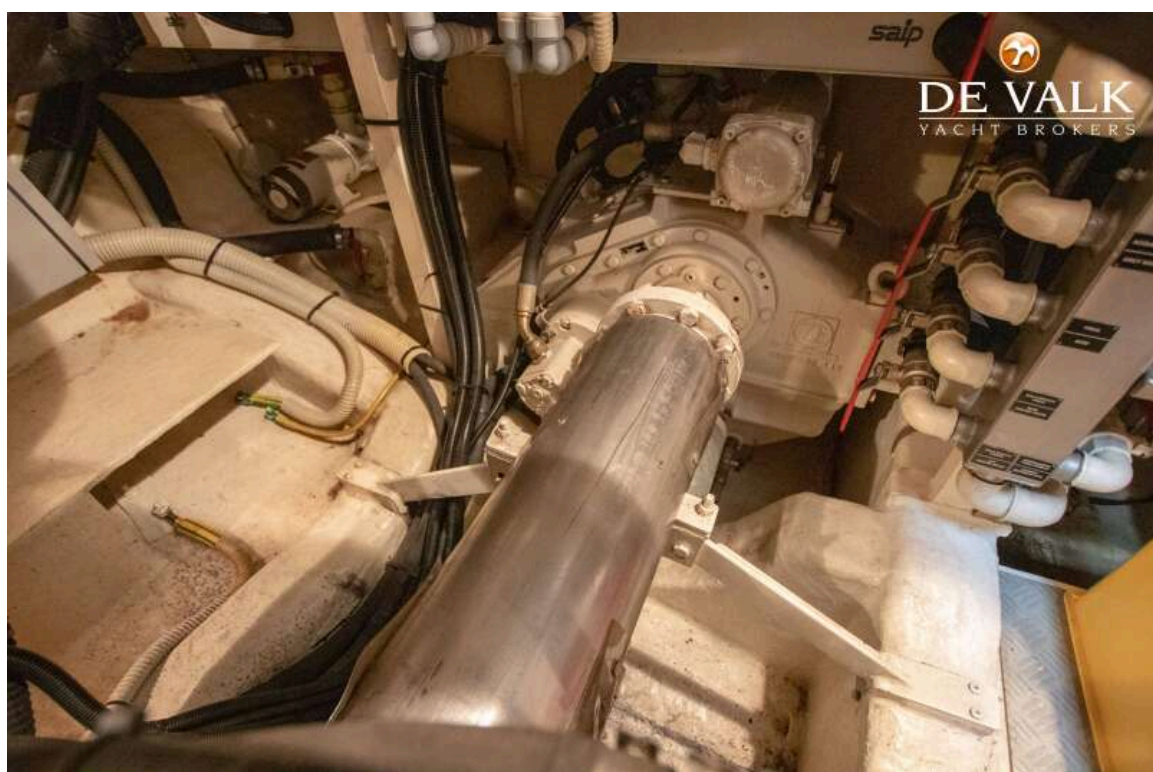


# RIVA 59 MERCURIUS SUPER





# RIVA 59 MERCURIUS SUPER



## RIVA 59 MERCURIUS SUPER

