



DE VALK
YACHT BROKERS



NELSON 32 SOFT TOP



DE VALK
YACHT BROKERS

NELSON 32 SOFT TOP

BROKER'S COMMENTS

This Nelson 32 is a great example of a vessel that has grown with the times. The current owner has rebuilt the vessel from the hull up, the deck, superstructure, fittings and all installations have been replaced over time. The vessel is equipped with a second engine. All vital systems have also been duplicated. The layout is very well thought out with storage space in all possible places. Despite its size and open character, the ship is very suitable for long voyages. For example, due to the two cooling facilities, freezer and central heating. You are welcome to visit her at our sales office.

Bas Lohmann

SPECIFICATIONS

Dimensions	9.60 x 2.90 x 0.85 (m)	Builder	Keith Nelson & Co Ltd.
Built	1963	Cabins	1
Material	Wood	Berths	2
Engine(s)	1 x Volvo Penta diesel	Hp/Kw	120.00 (hp), 88.32 (kw)
Asking price	€ 72.500 (VAT Exempt)	Lying	contact Loosdrecht

CONTACT

Sales office	De Valk Loosdrecht B.V.	Telephone	+31 (0)35 582 90 30
Address	't Breukeleveense Meentje 6 1231LM Loosdrecht / Wijdmeren NL	E-mail	loosdrecht@devalk.nl

DISCLAIMER

These particulars are given in good faith as supplied but cannot be guaranteed.



GENERAL

Model	NELSON 32 SOFT TOP
Type	motor yacht
LOA (m)	9,60
Beam (m)	2,90
Draft (m)	0,85
Year built	1963
Builder	Keith Nelson & Co Ltd.
Country	United Kingdom
Hull material	wood
Hull colour	blue
Hull shape	deep-V
Superstructure material	wood epoxy
Rubbing strake	rubber
Deck material	wood epoxy
Deck finish	non-skid paint
Superstructure deck finish	non-skid paint
Cockpit deck finish	teak
Window frame	aluminium
Window material	glass
Deckhatch	yes
Radar arch	non collapsible
Fuel tank (litre)	160
Fuel tank 2 (litre)	160
Level indicator (fuel tank)	yes
Level indicator (daytank)	yes
Freshwater tank (litre)	250
Level indicator (freshwater)	yes
Wheel steering	hydraulic
Outside helm position	hydraulic
Emergency tiller	yes



ACCOMMODATION

Cabins	1
Berths	2
Interior	teak
Floor	teak
Open cockpit	yes
Heating	central heating Webasto
Galley	yes
Countertop	wood
Sink	stainless steel
Cooker	petroleum
Fridge	2x compressor
Freezer	1x Waeco
Hot water system	220V + engine
Water pressure system	electrical
Wardrobe	shelves
Toilet	shared
Toilet system	manual

MACHINERY

No of engines	1
Make	Volvo Penta
HP	120
kW	88.32
Fuel	diesel
Year installed	1985
Engine hours	2000
Engine cooling system	freshwater heat exchanger
Drive	shaft
Engine controls	bowden cable
Gearbox	hydraulic ZF



Secondary engine	diesel Volvo Penta D1-30
Engine controls	bowden cable
Bowthruster	electric
Exhaust	watercooled
Thrust bearing	yes
Propeller type	fixed + feathered on secondary engine
Propeller blades	4
Propeller shaft material	stainless steel
Shaft lubrication	water
Manual bilge pump	yes
Electric bilge pump	3x
Bilge alarm	yes
Electrical installation	12/24/220
Batteries	yes
Start battery	2x
Service battery	2x 180Ah
Battery monitor	yes
Battery charger	Telwin Dynamic 620 12/24V 60Ah + engine start function
Inverter	Victron 1600W
Solar panel	yes
Shorepower	with cable

NAVIGATION

Compass	Plastimo
Electric compass	Raymarine Autopilot
Depth sounder/log	2x Raymarine ST40 Bidata
Fish finder	Lowrance
VHF	Raymarine
VHF handheld	Raymarine
Autopilot	Raymarine
Rudder angle indicator	Vetus



Radar	yes
GPS	yes
Plotter	Raymarine SL72
Navtex	Clipper Navtex
AIS transceiver	Not functioning at the moment
Navigation lights	yes
Searchlight	yes

EQUIPMENT

Fixed windscreen	yes
Sprayhood	yes
Cockpit cover	yes
Sun awning	yes
Cockpit cushions	yes
Cockpit table	yes
Bathing platform	yes
Boarding ladder	stainless steel
Anchor	Bruce
Anchor chain	yes
Anchor 2	Bruce + Stern anchor
Windlass	electrical
Windlass aft	manual 2x Harken self tailing
Deck wash	High Pressure
Outboard support	+ Manual crane
Sea railing	wire
Grab rail (superstructure)	stainless steel
Railing side opening gates	yes
Life raft	container
Lifebuoy	yes
Wiper	3x
Horn	air pressure



NELSON 32 SOFT TOP

Radar reflector	yes
Fenders	yes
Mooring lines	yes
TV	yes
Radio	Sony
Cockpit speakers	yes
Speakers in salon	yes
Speakers in cabin	yes



NELSON 32 SOFT TOP



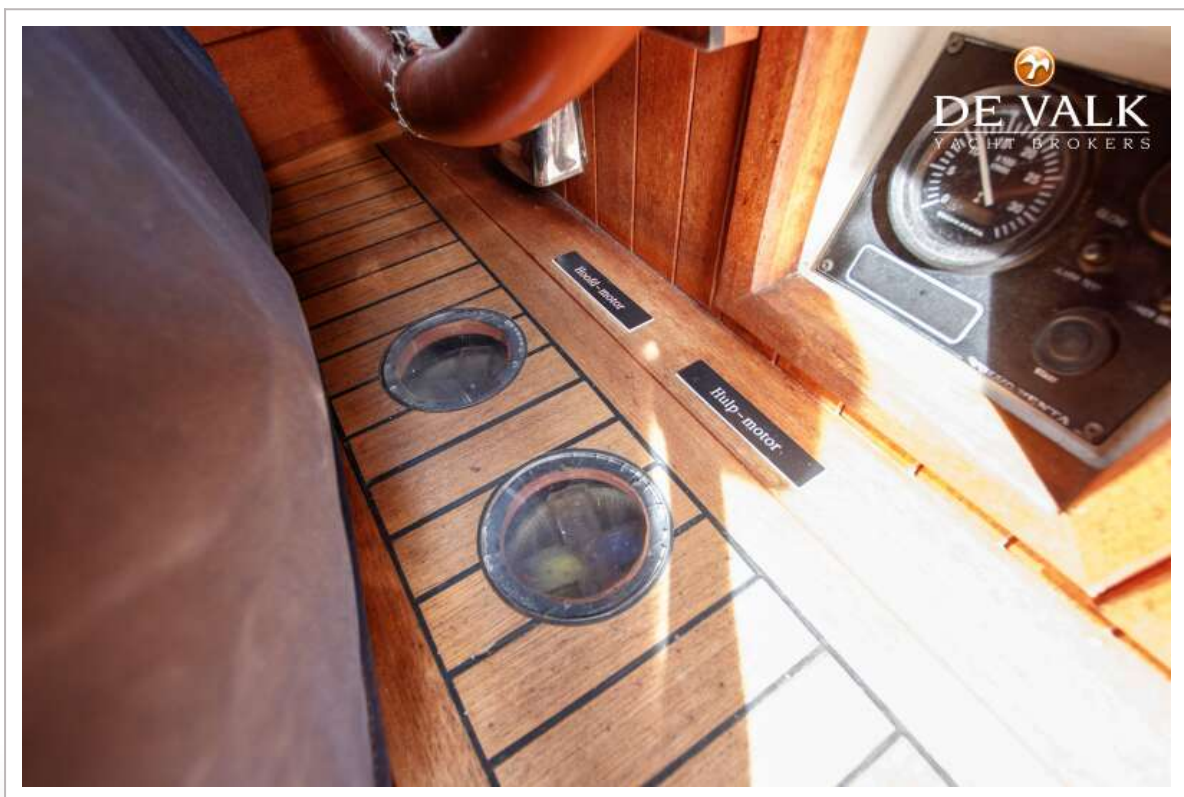
NELSON 32 SOFT TOP



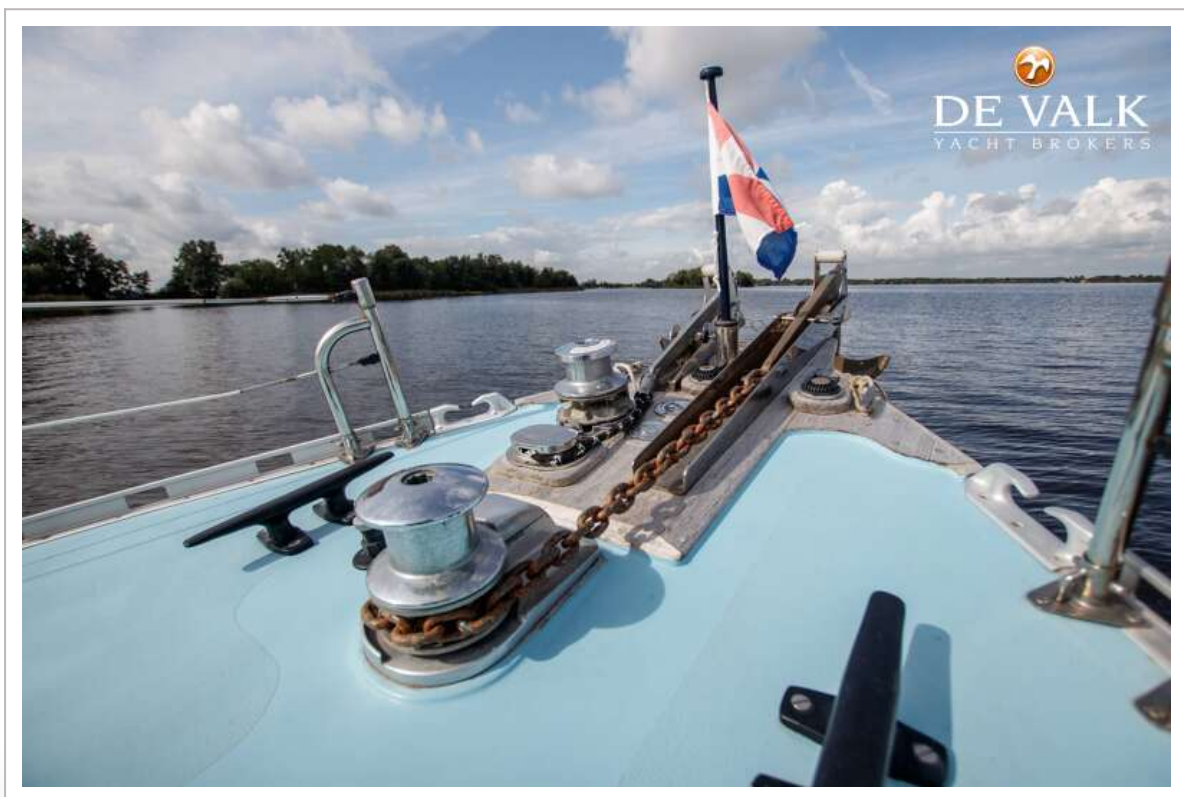
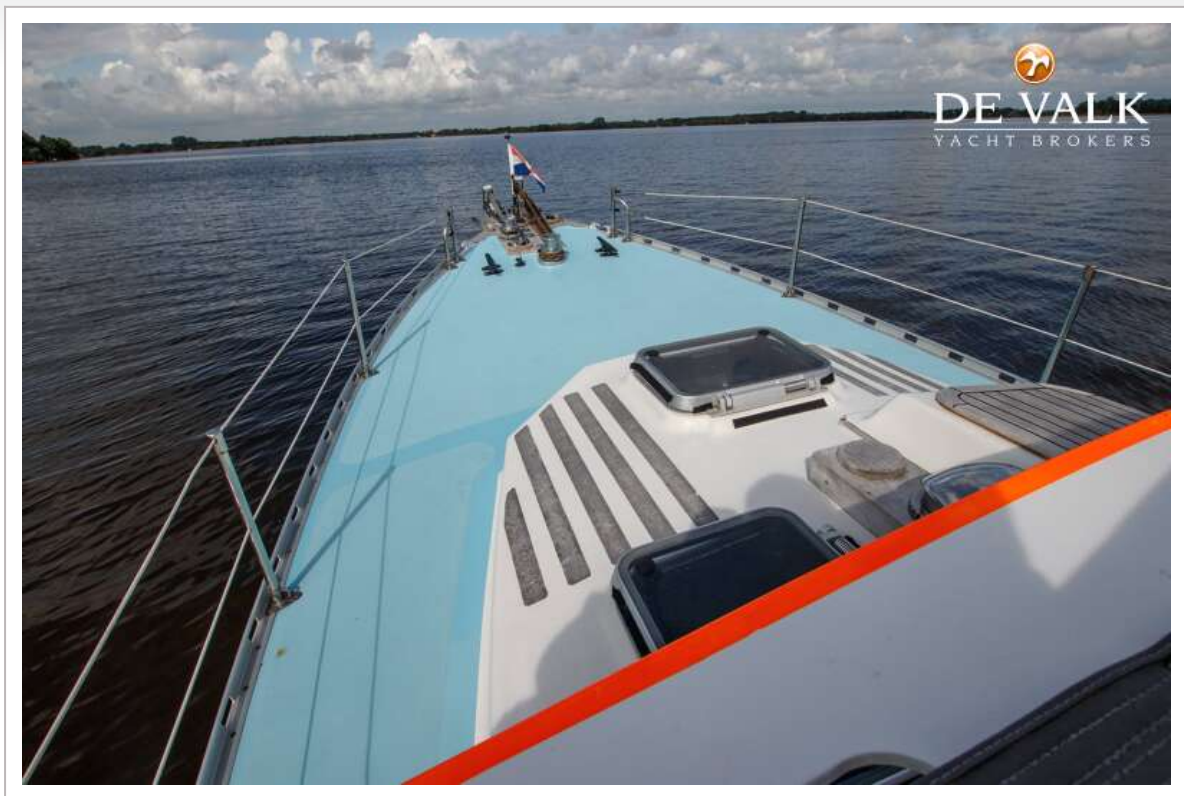
NELSON 32 SOFT TOP



NELSON 32 SOFT TOP



NELSON 32 SOFT TOP



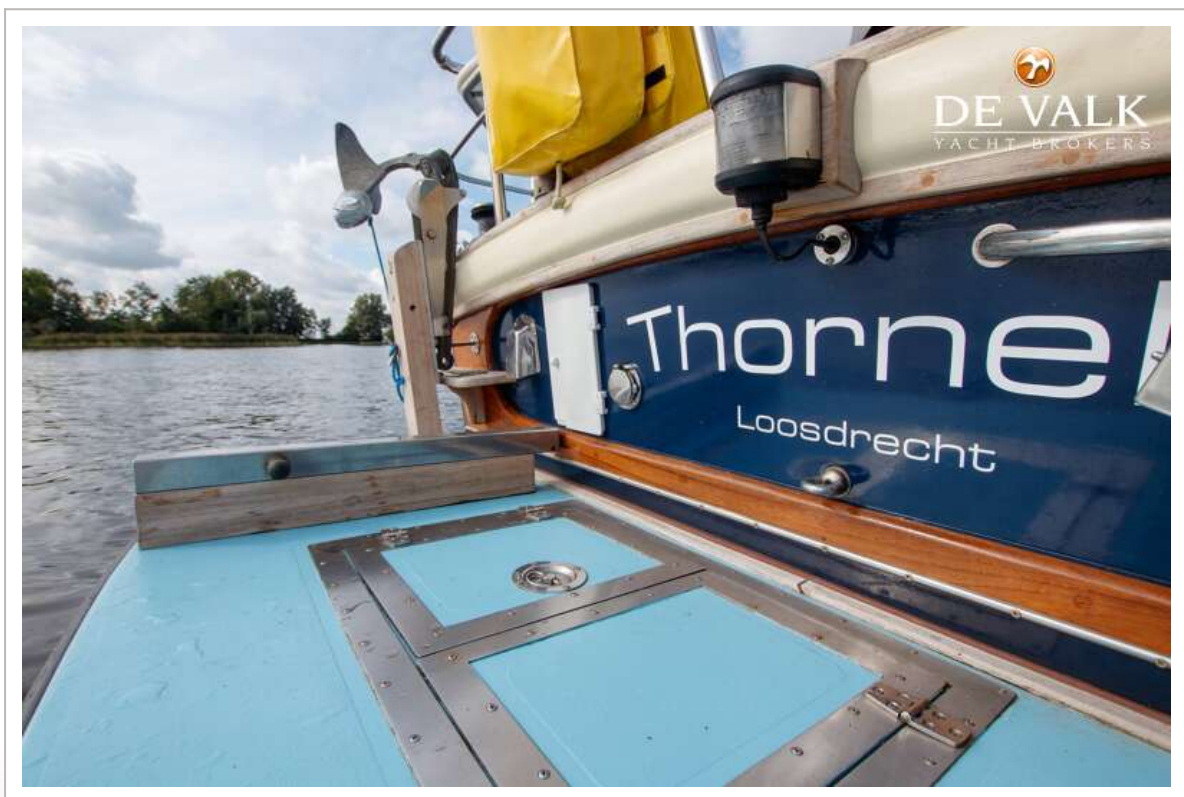
NELSON 32 SOFT TOP



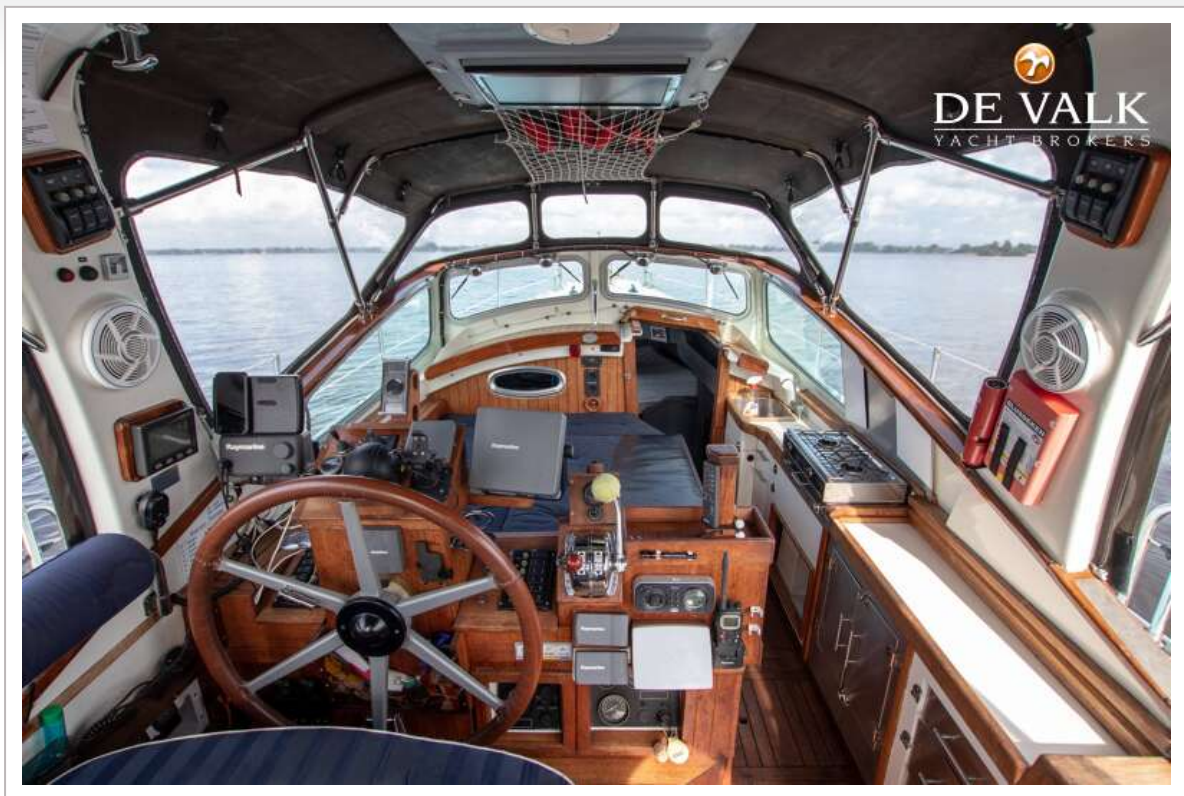
NELSON 32 SOFT TOP



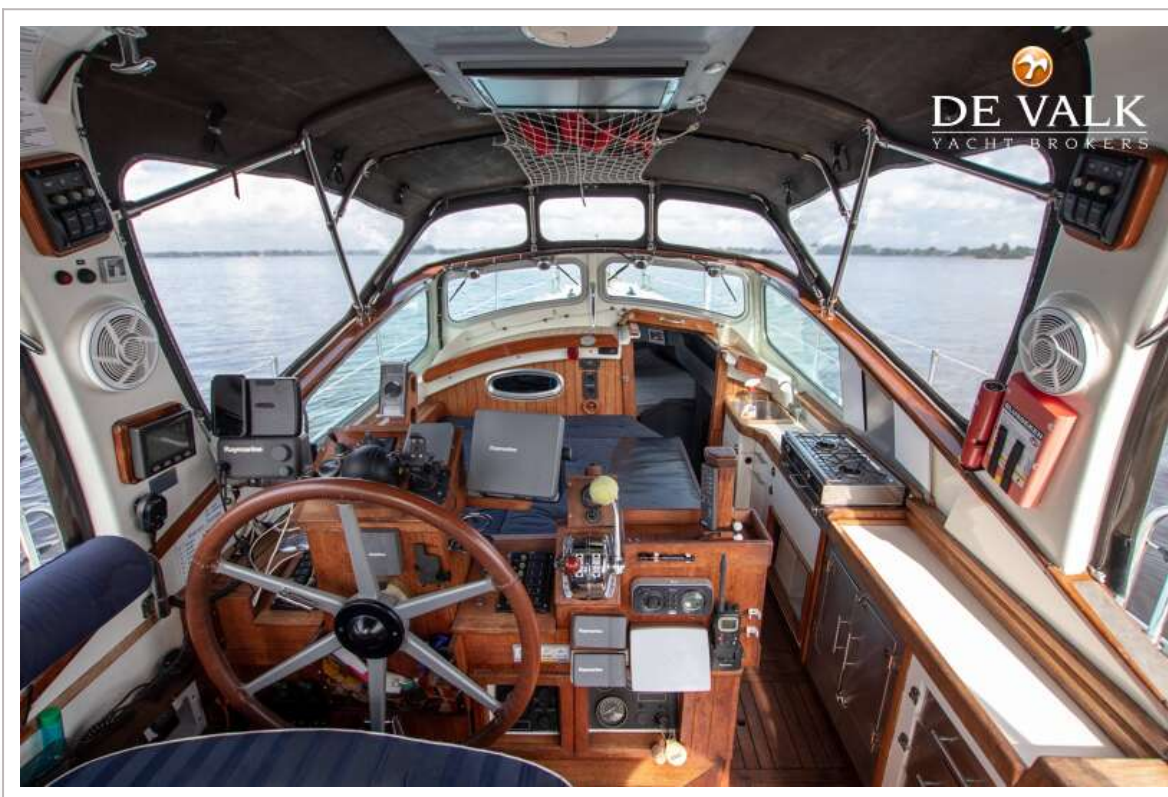
NELSON 32 SOFT TOP



NELSON 32 SOFT TOP



NELSON 32 SOFT TOP



NELSON 32 SOFT TOP



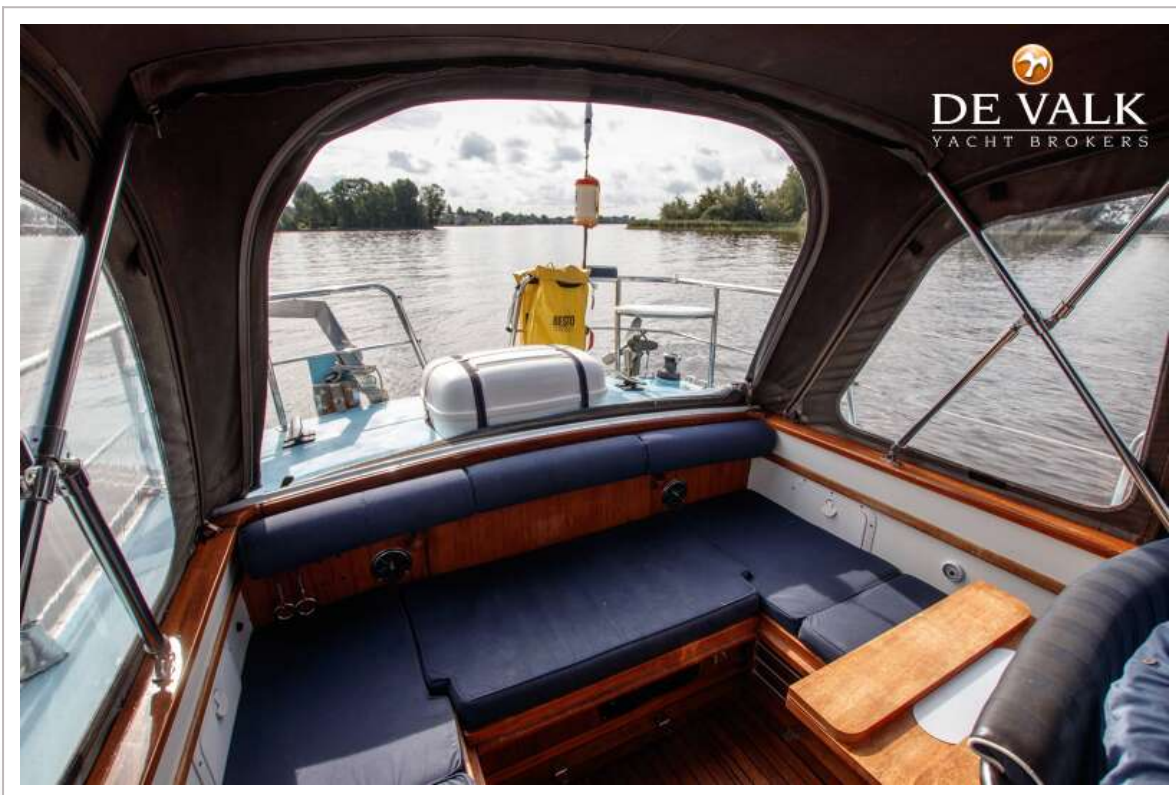
NELSON 32 SOFT TOP



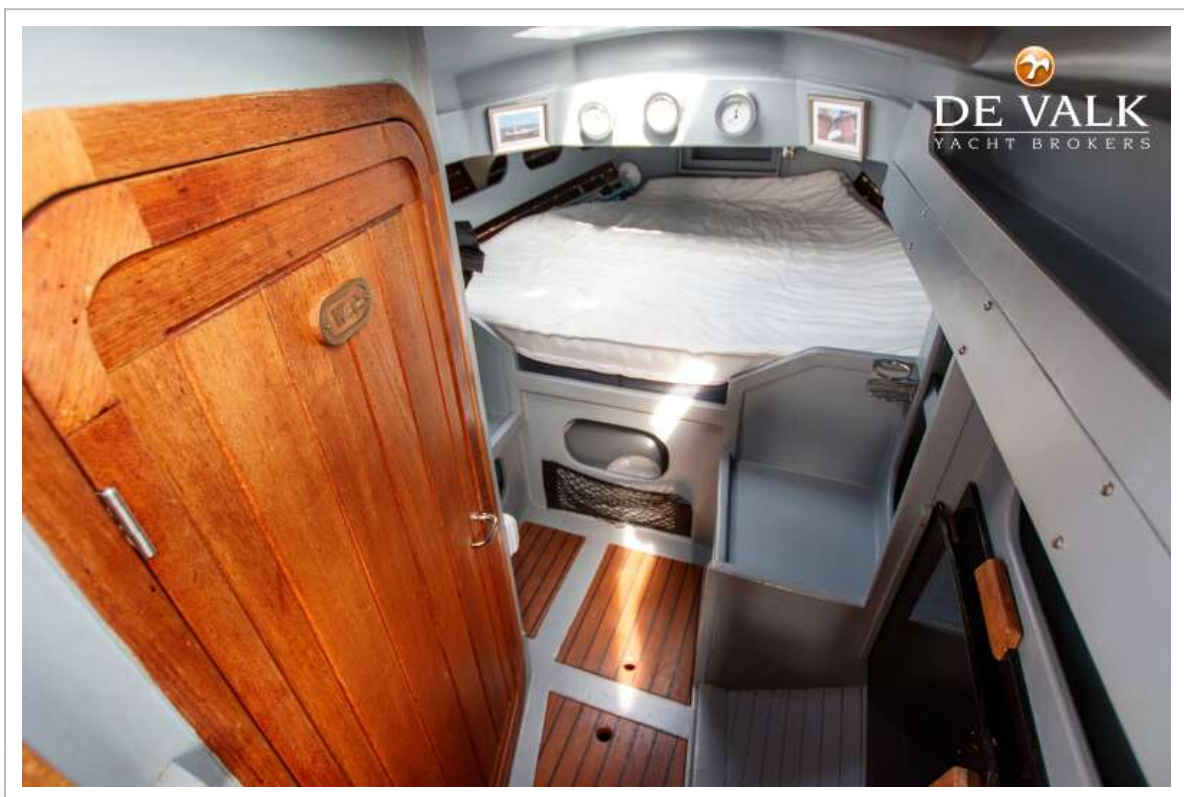
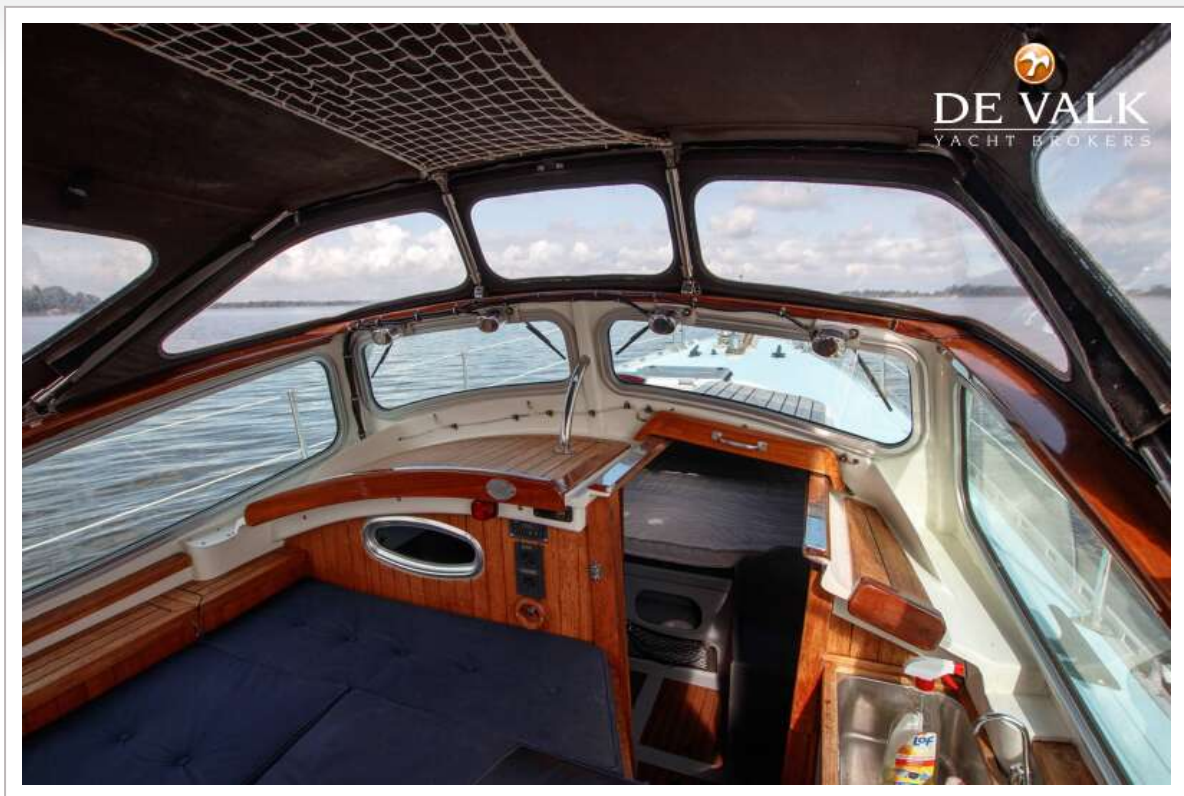
NELSON 32 SOFT TOP



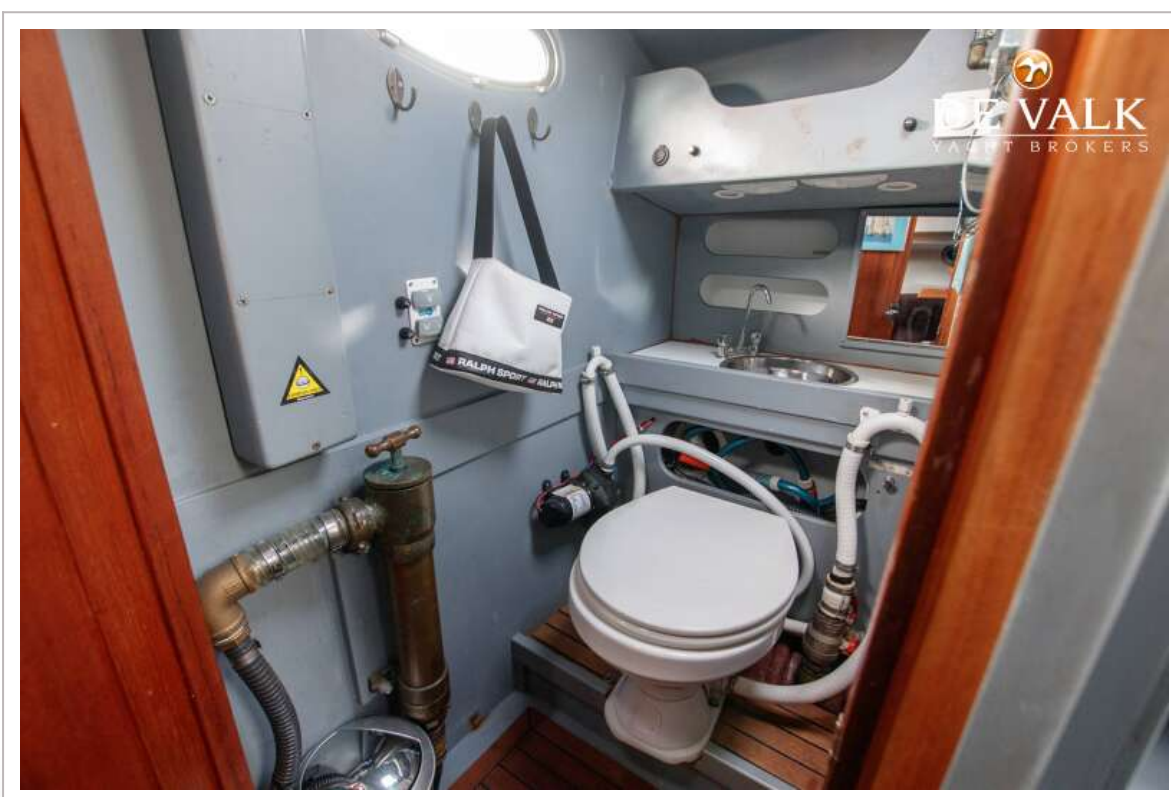
NELSON 32 SOFT TOP



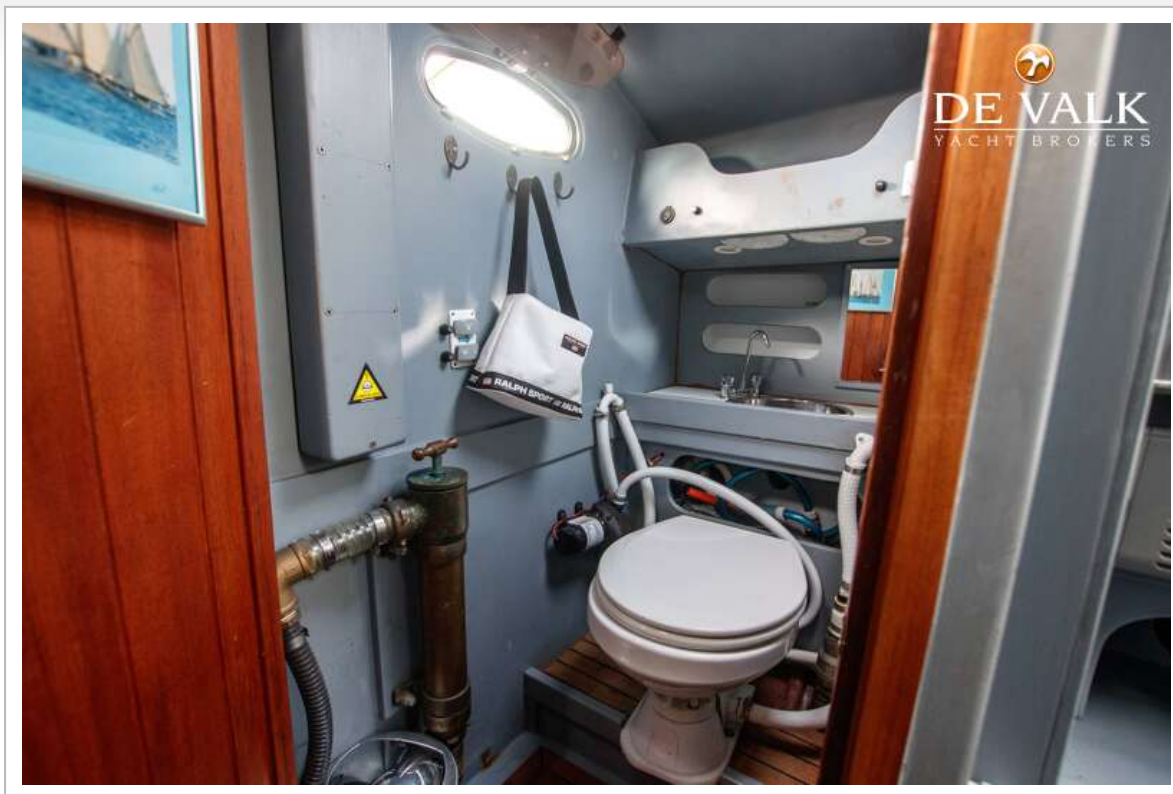
NELSON 32 SOFT TOP



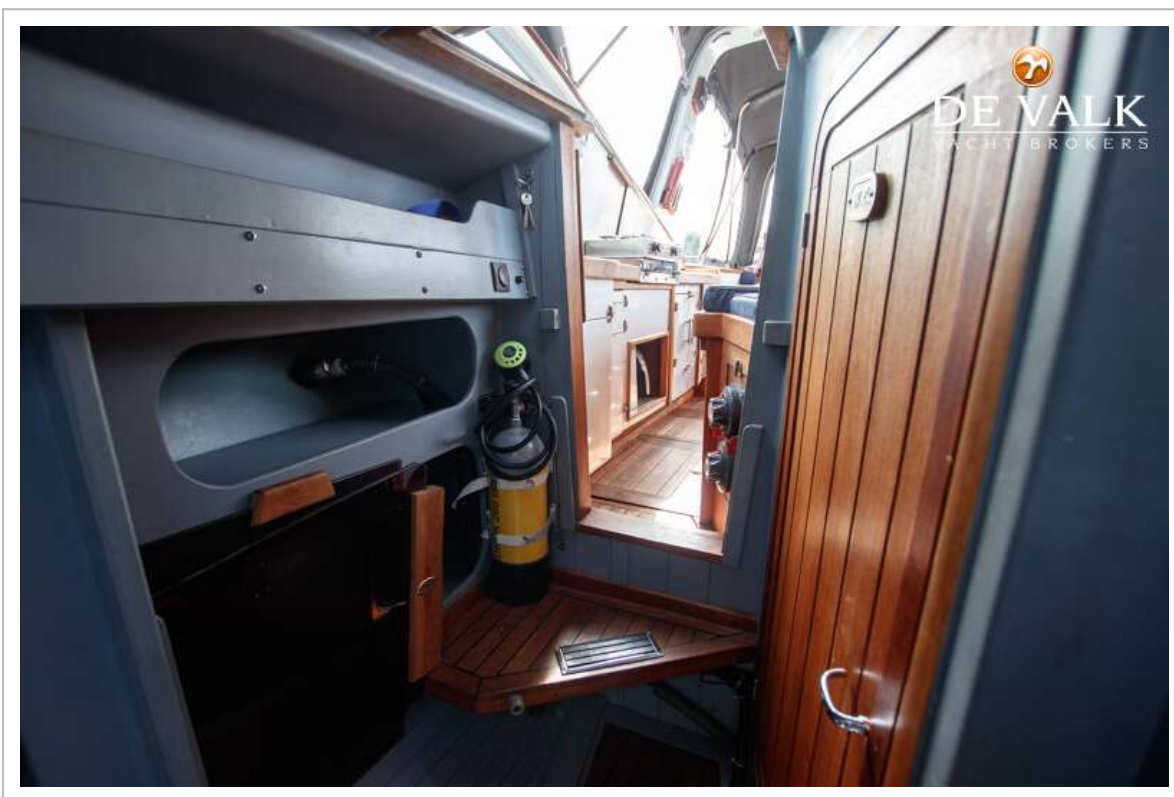
NELSON 32 SOFT TOP



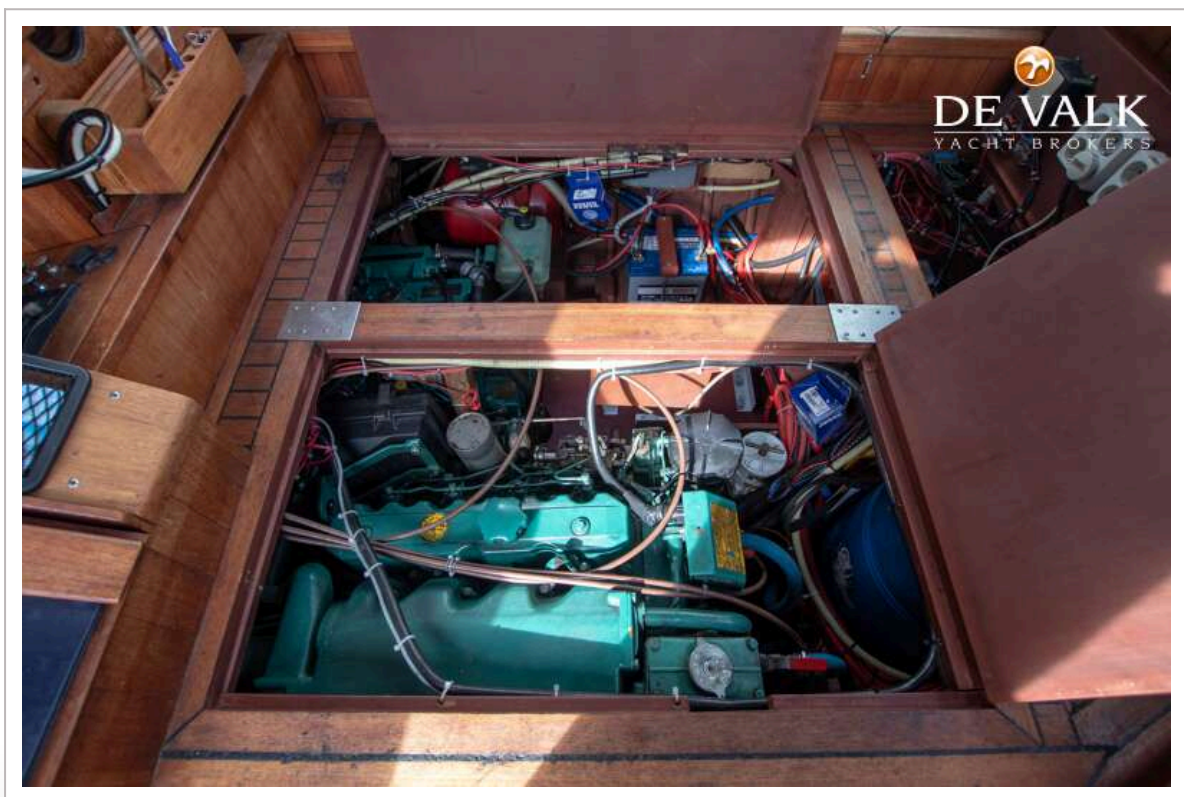
NELSON 32 SOFT TOP



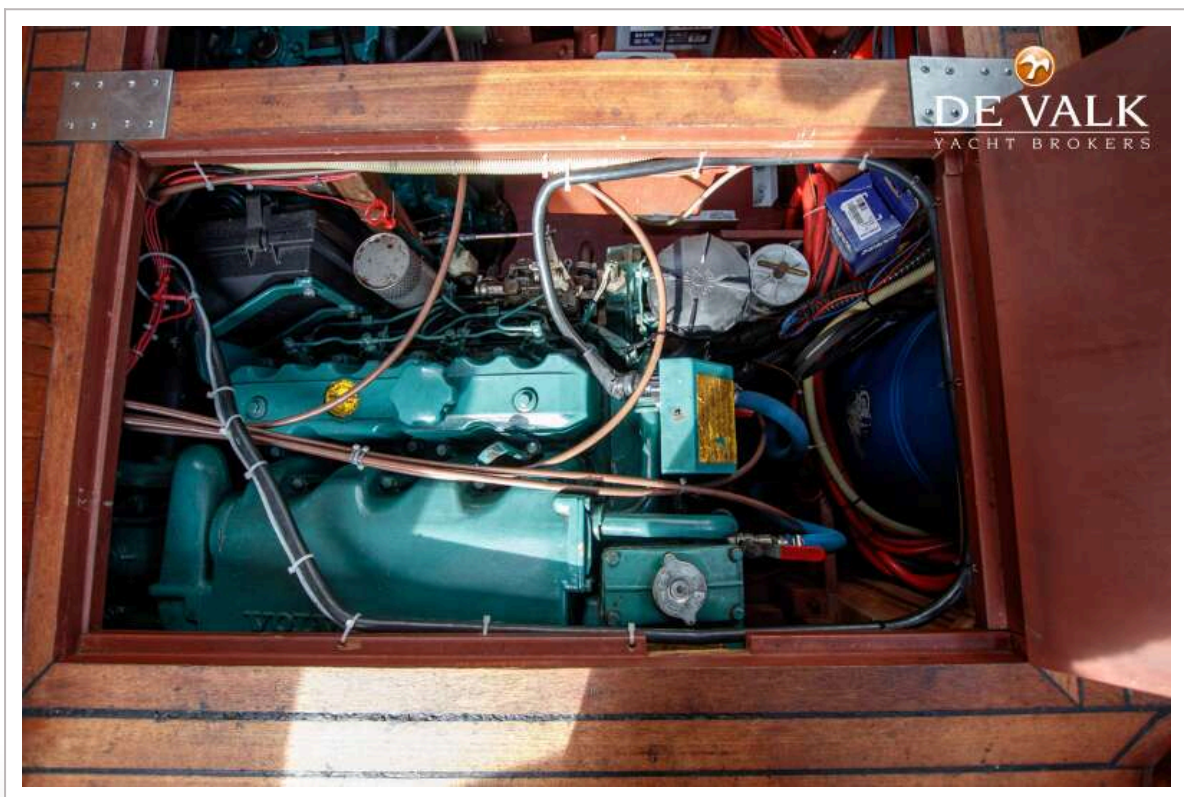
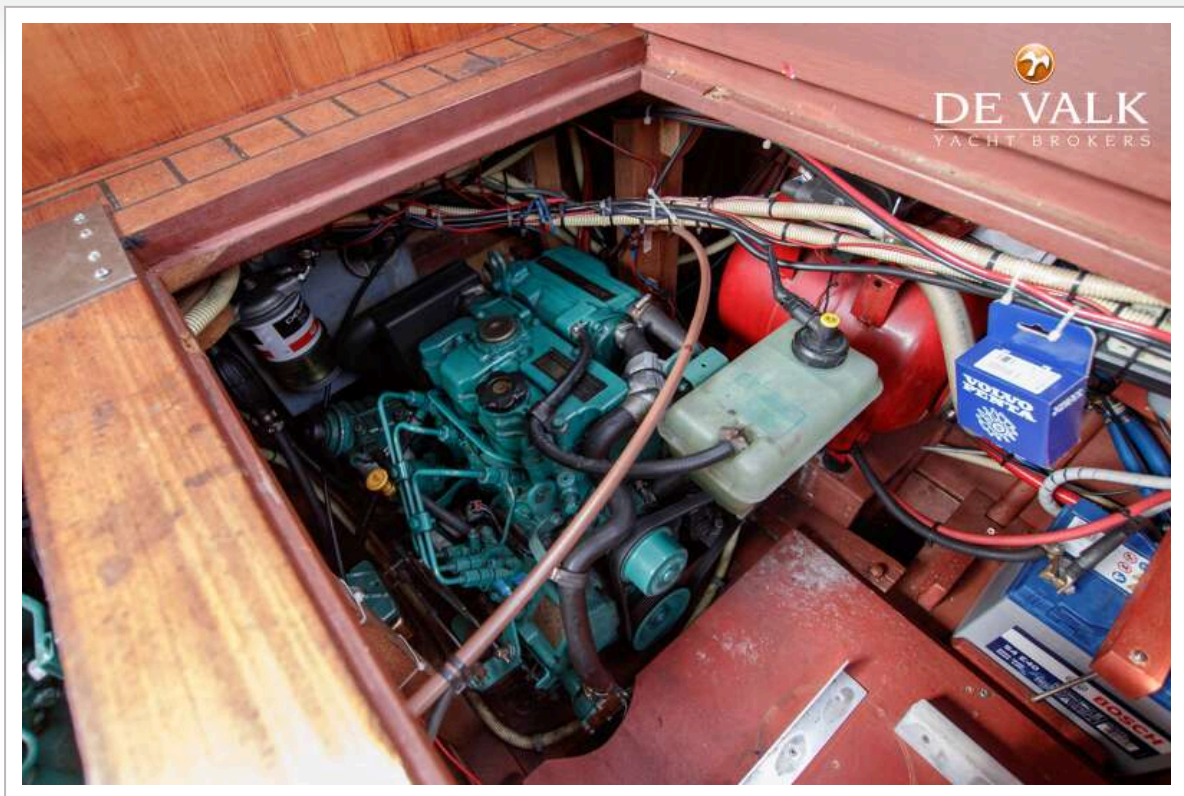
NELSON 32 SOFT TOP



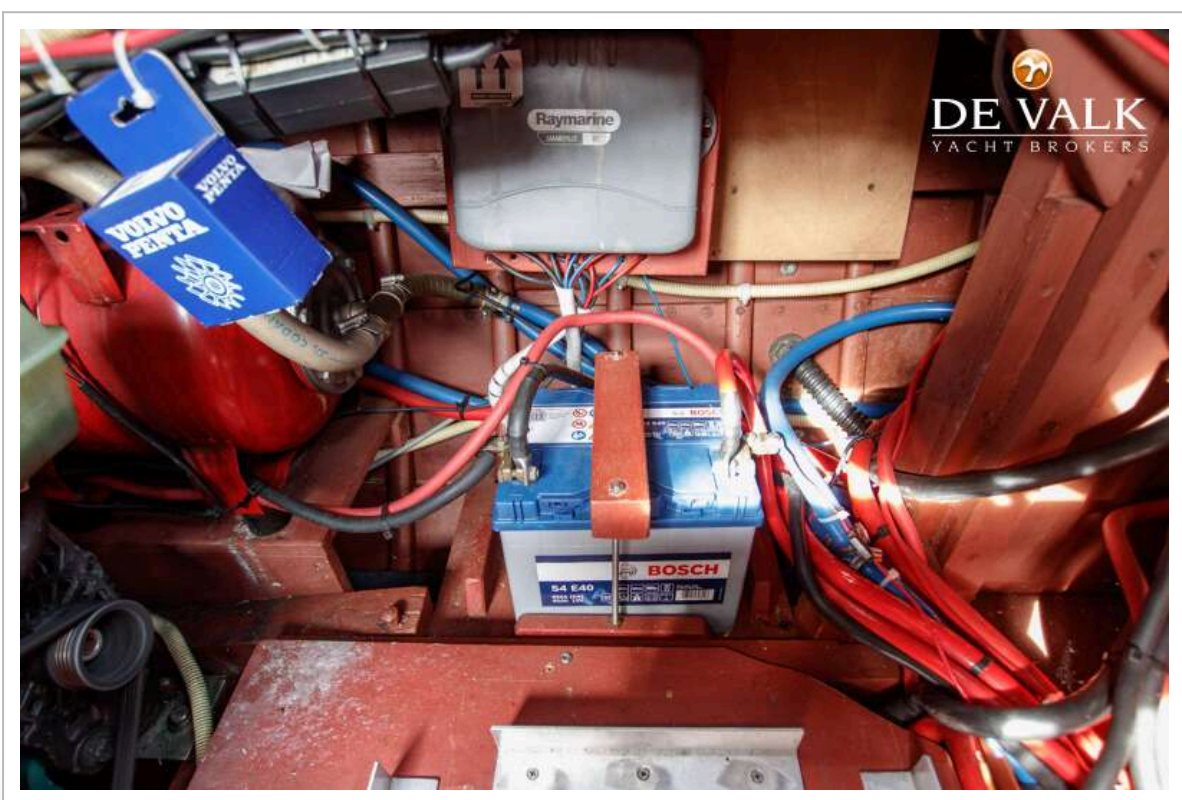
NELSON 32 SOFT TOP



NELSON 32 SOFT TOP



NELSON 32 SOFT TOP



NELSON 32 SOFT TOP

