



BREEHORN 44



DE VALK
YACHT BROKERS

BROKER'S COMMENTS

Warm welcome on board of the Breehorn 44 Ikinoo. This beautiful vessel is best described as in tip-top condition and ready to cross oceans tomorrow, if you wish. The design is typical long distance performance, enjoy the fantastic protective dog-house. The led keel ballast percentage is an impressive 43%, this is a guaranty for safe and comfortable sailing in any weather condition. Benefit the new installed 2020 Yanmar engine, the recent batteries and her new 2023 sails, the mast is fully renovated in 2017. She is in very good overall condition and literally ready to take over and sail away.

Willem Koopmans

SPECIFICATIONS

Dimensions	13.20 x 3.96 x 2.00 (m)	Builder	Breehorn / Van der Meijden
Built	1995	Cabins	2
Material	Aluminium	Berths	5
Engine(s)	1 x Yanmar 4JH5E diesel	Hp/Kw	54.00 (hp), 39.74 (kw)
Asking price	sold (VAT)	Lying	contact sales office

CONTACT

Sales office	De Valk Costa Blanca	Telephone	+34965021569
Address	Costa Blanca Region 03730 Javea Alicante Spain	E-mail	costablanca@devalk.nl

DISCLAIMER

These particulars are given in good faith as supplied but cannot be guaranteed.



GENERAL

Model	BREEHORN 44
Type	sailing yacht
LOA (m)	13,20
LWL (m)	11,00
Beam (m)	3,96
Draft (m)	2,00
Air draft (m)	21,00
Headroom (m)	2,00
Year built	1995
Launched	1995
Builder	Breehorn / Van der Meijden
Country	The Netherlands
Designer	D. Koopmans Sr.
Displacement (t)	13
Ballast (tonnes)	lead 5,6 meaning 43%!
CE norm	NA
Hull material	aluminium
Hull colour	blue AWL grip 2016; color is Aristo blue.
Hull thickness (mm)	7 mm below waterline, above 6 mm
Hull shape	round-bilged
Keel type	fin keel
Bilge keels	yes
Superstructure material	GRP
Deck material	GRP
Deck finish	teak Good condition 2023 all Sikaflex checked/partly redone
Superstructure deck finish	teak
Cockpit deck finish	teak
Antifouling (year)	April 2023
Window frame	aluminium
Window material	tempered glass



Deckhatch	yes
Insulation	yes
Steadying sail with mast	yes
Fuel tank (litre)	aluminium 375
Level indicator (fuel tank)	yes
Freshwater tank (litre)	aluminium 375
Blackwater tank (litre)	70
Wheel steering	mechanical Cobra
More info on hull	Hull is foam isolated.
Extra info	Well maintained vessel with almost new engine and sails
Extra info	Built start 1993 in water 1995
Extra info	Hull stringers 40 cm

ACCOMMODATION

Cabins	2
Berths	5
Interior	Rose wood
Layout	Owner cabin, salon, second cabin, wet cell with hughe storage
Floor	teak and holly
Open cockpit	yes
Doghouse	yes
Saloon	yes
Headroom saloon (m)	2
Heating	Webasto 5 kW
Navigation center	yes
Chart table	yes
Aft Cabin	yes
Dinette to convert into berth	1 person can sleep here
Opening door to cockpit	yes
Galley	yes
Countertop	Duropal White



Sink	stainless steel Double
Cooker	calor gas Force10, 3 burner, new 2016
Oven	Force10, new 2016
Fridge	yes
Hot water system	220V + engine
Water pressure system	electrical
Manual and/or foot pump	Fresh water
Owners cabin	double bed
Bed length (m)	2
Wardrobe	hanging and shelves
Bathroom	shared
Toilet	shared
Toilet system	manual
Wash basin	in the bathroom
Shower	shared
Guest cabin 1	double bed
Bed length (m)	2
Wardrobe	hanging and shelves
Bathroom	shared
Toilet	shared
Toilet system	manual
Wash basin	in the bathroom
Shower	shared

MACHINERY

No of engines	1
Make	Yanmar
Type	4JH5E
HP	54
kW	39.74
Fuel	diesel



Year installed	2020
Year of overhaul	Complete new engine installed incl. gearbox 2020
Maximum speed (kn)	7,5
Cruising speed (kn)	6,3
Consumption (l/hr)	2,7
Engine hours	1119
Engine cooling system	freshwater heat exchanger
Drive	shaft
Shaft seal	Volvo seal, new 2020
Engine controls	bowden cable
Gearbox	hydraulic KM4A
Bowthruster	hydraulic 9 hp
Exhaust	watercooled
Propeller type	folding Stainless steel Autostream
Propeller blades	3
Propeller shaft material	stainless steel
Shaft lubrication	water
Manual bilge pump	yes
Electric bilge pump	yes
Electrical installation	12/228
Batteries	6 x 120Ah Amp-Tech AGM, replaced in 2021
Start battery	95 Ah, new 2023
Battery monitor	yes
Battery charger	Mastervolt Mass 12/80
Inverter	Victron 12/ 750
Wind generator	Silent wind 400+, installed in 2019
Solar panel	2x 95 Watt on railing, 2 x 75 Watt on roof doghouse
Shorepower	Isolated from shore/ship
Insulation transformer	Victron 3600 Watt
Extra info	Hydraulic system anchor and bow thruster is redone in 2023
Extra info	12 volt DC/DC converter
Extra info	Victron MPPT regulator solar panels



NAVIGATION

Compass	yes
Electric compass	On pilot
Multi control display	Raymarine, 1x I50, 2x I60, 1x I70
Depth sounder	yes
Log	yes
Windset	Raymarine I60 + I60 close hauled
VHF	Neptune 100
VHF handheld	Icom M73
Autopilot	Raymarine electric/hydraulic drive
Wind vane steering install.	Windpilot Pacific
Rudder angle indicator	On pilot
Radar	Raymarine RD 218 2 kW with C70 plotter
Plotter/GPS	Raymarine C90 and E70 outside
Navtex	Vecom K41
AIS transceiver	Raymarine AIS650 incl. Watcheye
Transmitter	SSB Radio Icom 706MK2 150 Watt PEP
EPIRB	yes
Navigation lights	yes
Extra info	SART
Extra info	Factor 3 modem

EQUIPMENT

Fixed hardtop	Doghouse
Bimini	yes
Cockpit cushions	yes
Cockpit table	yes
Boarding ladder	yes
Deck shower	yes
Anchor	Rocna 33 kg, new 2021
Anchor chain	60 mtr 10 mm, new 2023



Anchor 2	Fortress
Anchor chain	5 mtr chain + 60 mtr anchor line
Windlass	hydraulic Anchormate
Dinghy	2x
Outboard	Mercury, 6 hp
Outboard support	yes
Deck crane	manual For outboard
Sea railing	yes
Life raft	valise (or bag) Needs service
Life raft (pers)	4
Last life raft survey	2020
Lifejackets	3x
Radar reflector	yes
Fenders	yes
Mooring lines	yes
Spare parts	yes
TV	Akai
Radio-cd player	yes
Speakers in salon	yes
Fire extinguisher	Needs check on date
Extra info	Winter tent, roll-up rear and side panels, can be used as bimini

RIGGING

Rigging	sloop Replaced in 2012, new terminals in 2016. ROD22 forestay new 2021
Standing rigging	wire Dyform and stainless steel
Brand mast	Holland Spar € 14k refit mast 2016 (invoice available)
Material mast	aluminium
Spreaders	2
Mainsail	4 reef system
Battcars	yes



Fully battened mainsail	Lee cruising sail, new 2023 (not visible on the pictures)
Cutterstay	19 m2, De Vries Sails, new 2013
Genoa furler	Genoa/yankee furler Reckmann 2000
Gennaker	140m2, in good condition
Staysail	De Vries Sails, 19m2, new 2013
Staysail furler	Reckman 2000
Yankee	Lee cruising sail, new 2023 (not on pictures)
Reefing System	4x
Backstay adjuster	Navtec, revised in 2017
Boomvang	Navtec, revised in 2017
Primary sheet winch	2x Andersen 46ST Two speed
Genoa sheetwinches	yes
Halyard winches	2x Andersen 40ST Two speed
Reefing winch	1x Andersen 28ST Two speed
Multifunctional winches	2x Andersen 40ST Two speed
Spi-pole	2x carbon, white painted
Isolated backstay	Top unit has been replaced in 2021
Extra info	40 mast steps installed in 2016
Extra info	Solid SS crew support at mast, also 100 m band 5000 kg strength







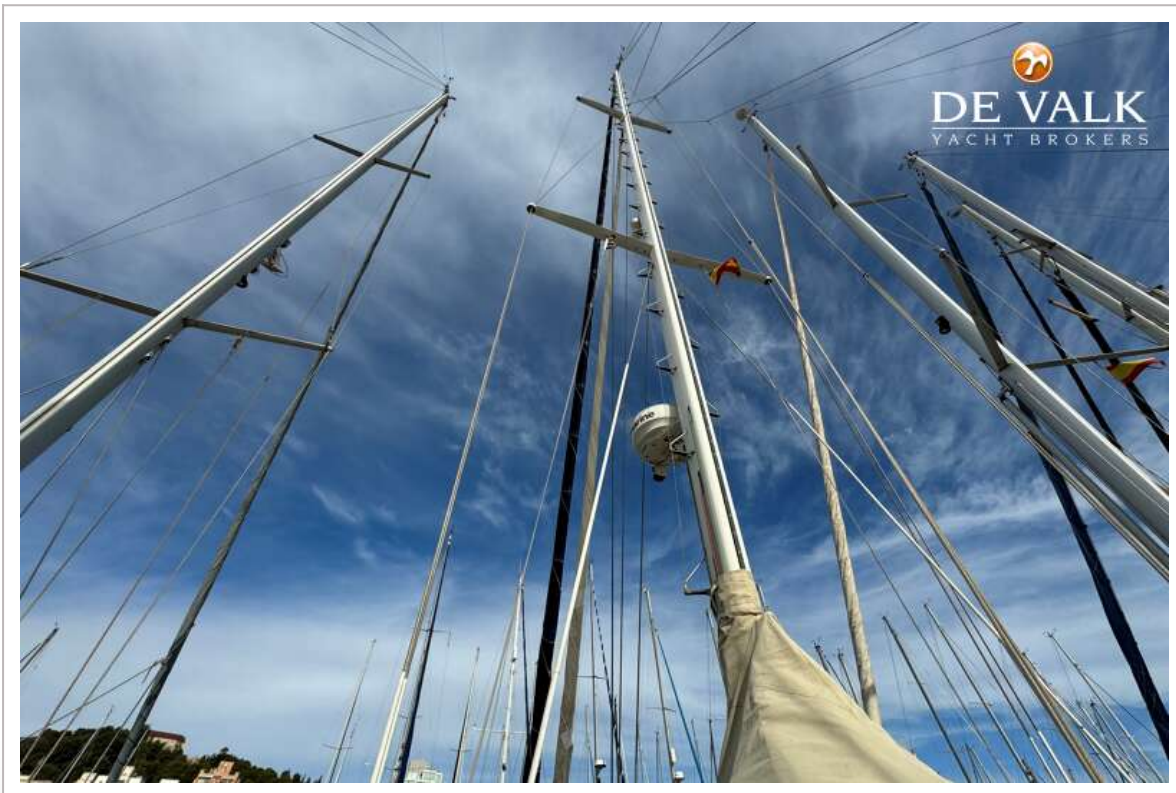
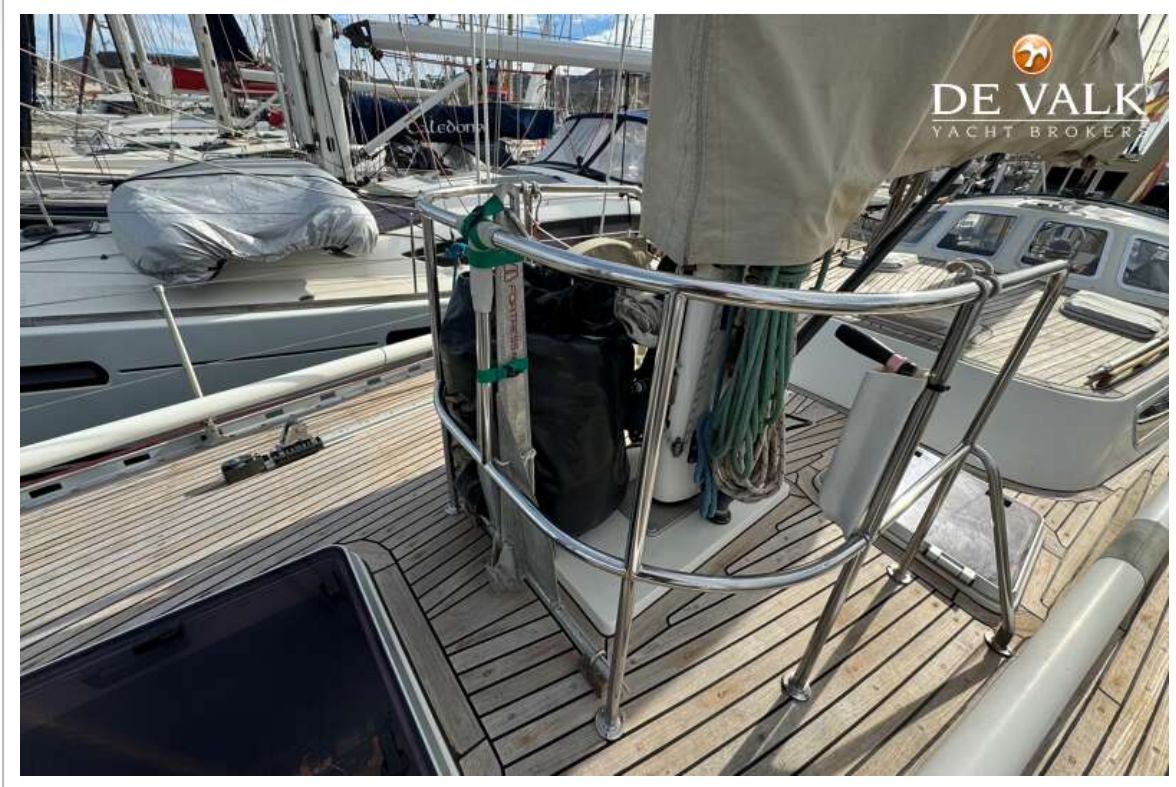
BREEHORN 44



BREEHORN 44



BREEHORN 44



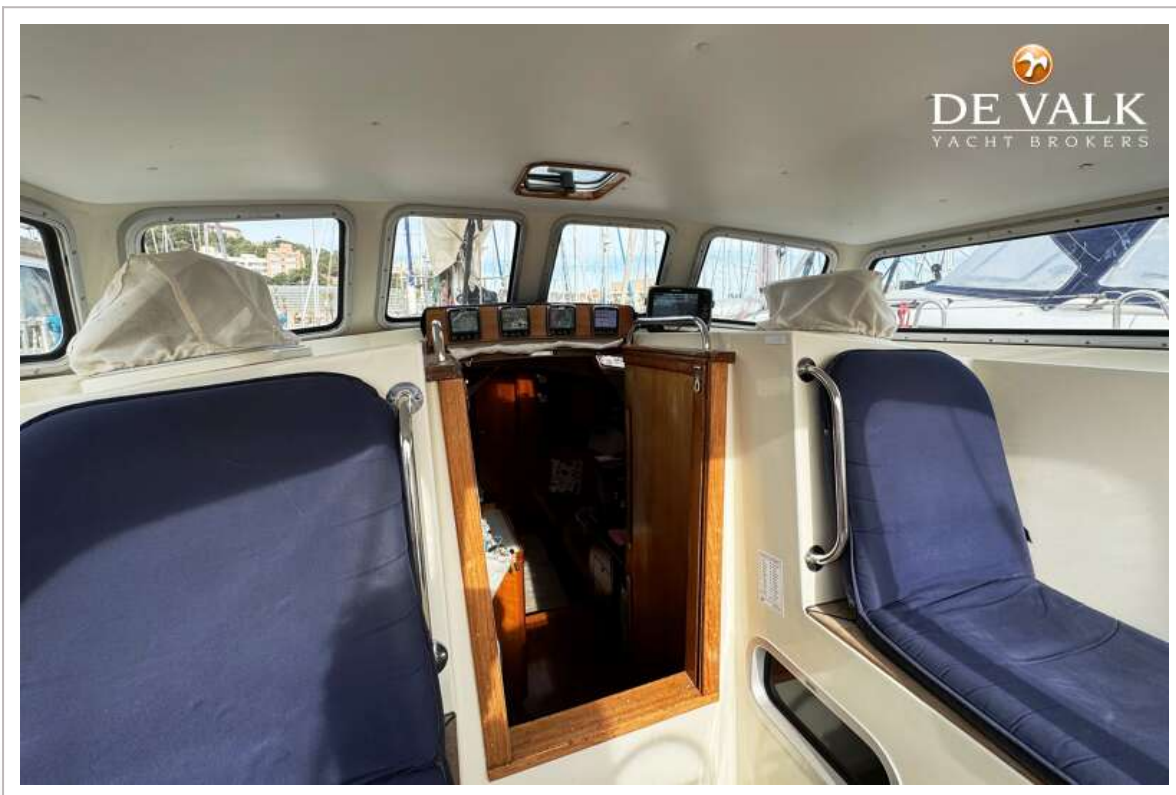
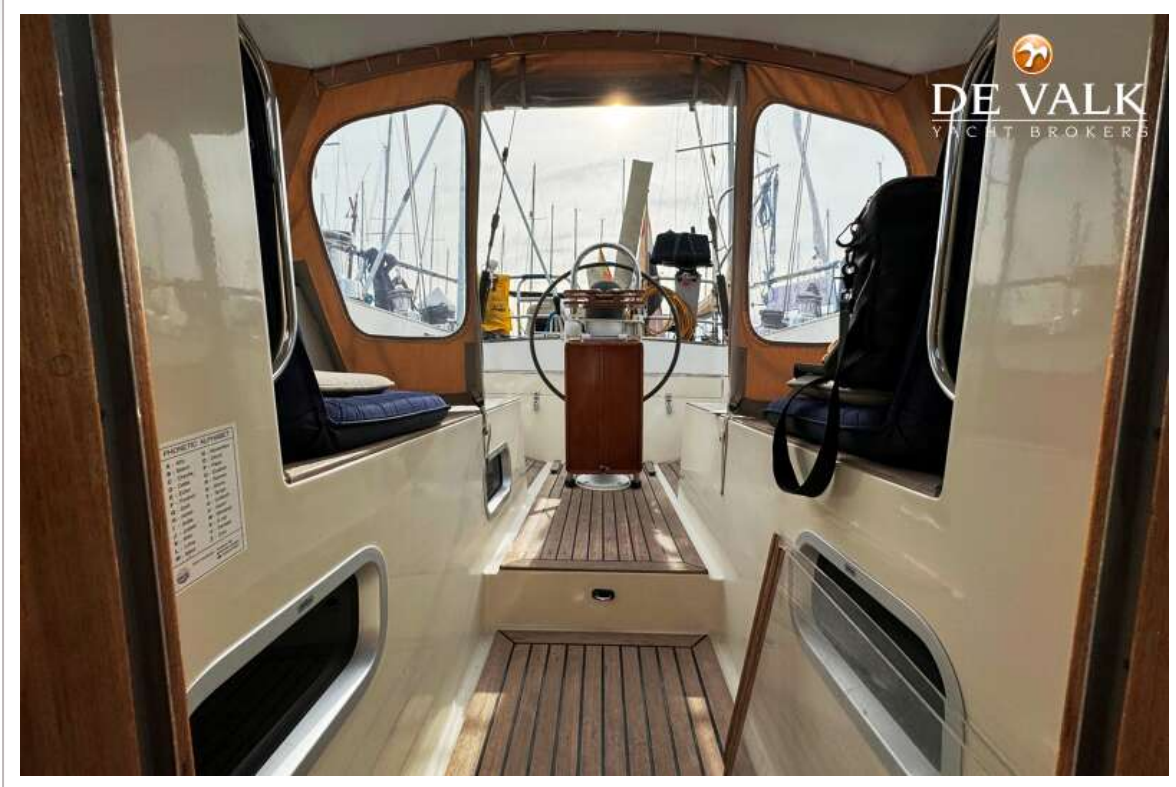
BREEHORN 44



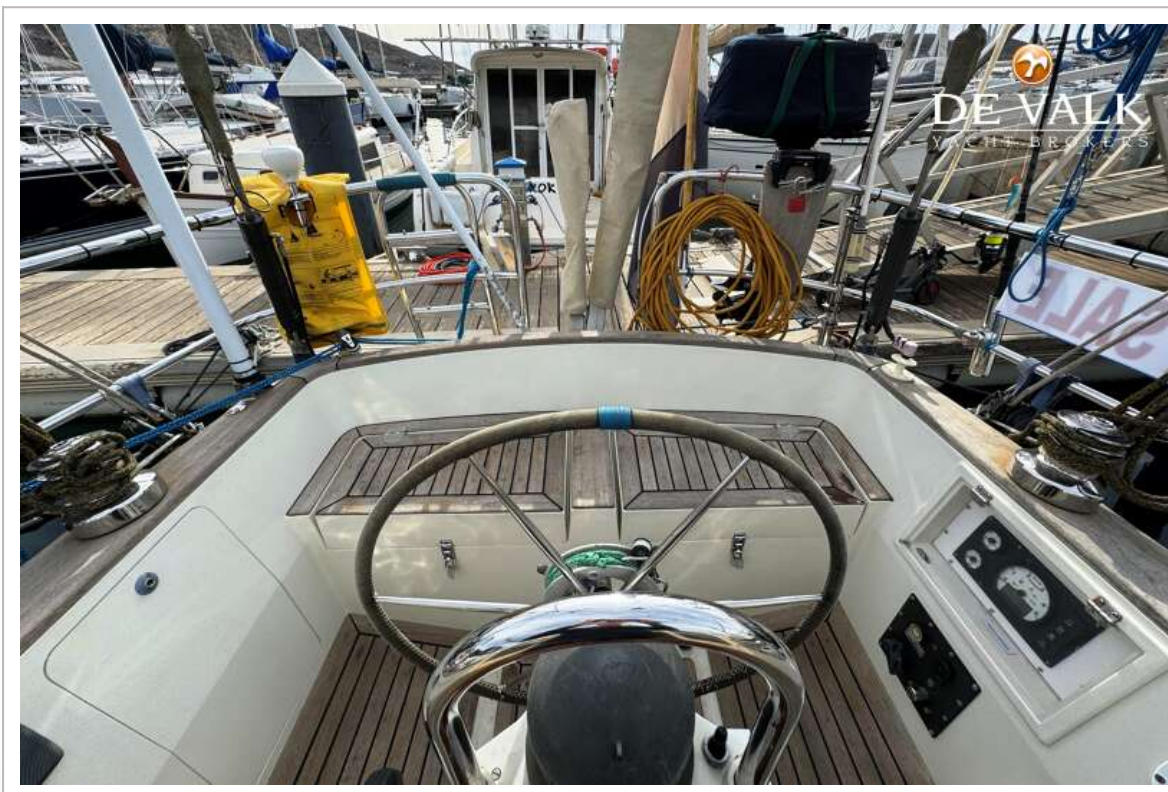
BREEHORN 44



BREEHORN 44



BREEHORN 44



BREEHORN 44



BREEHORN 44



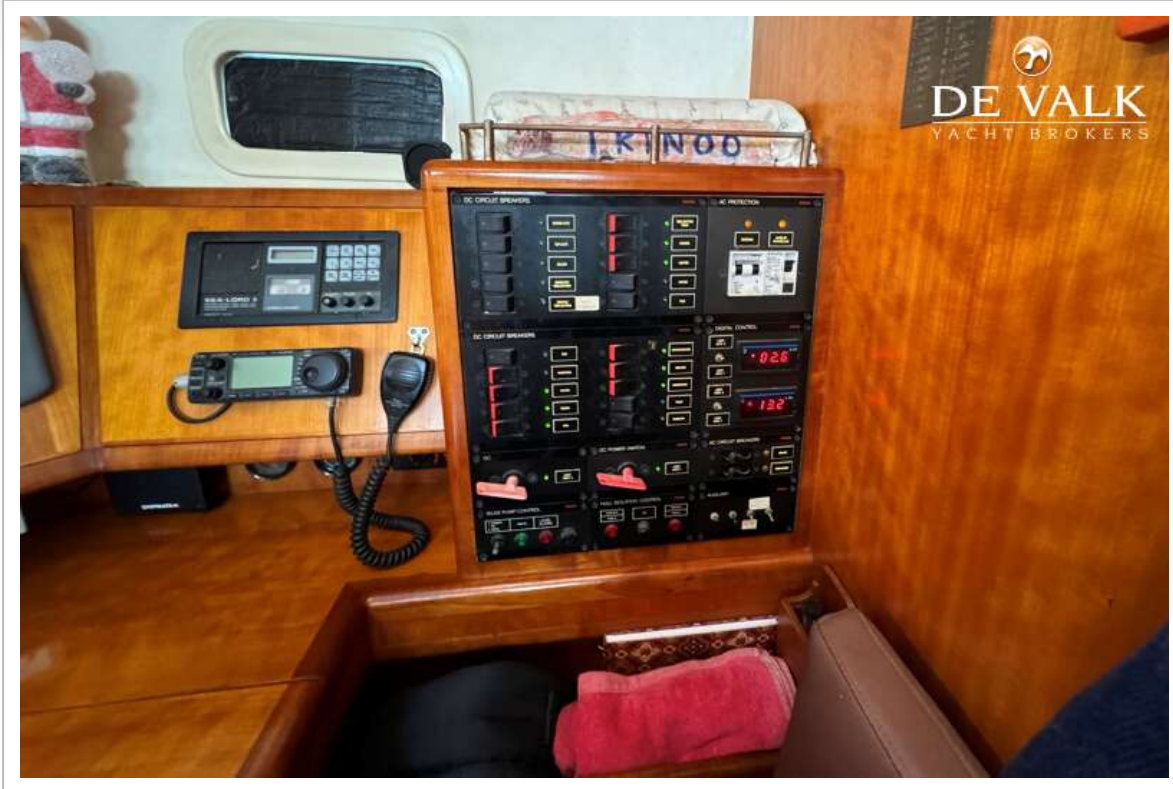
BREEHORN 44



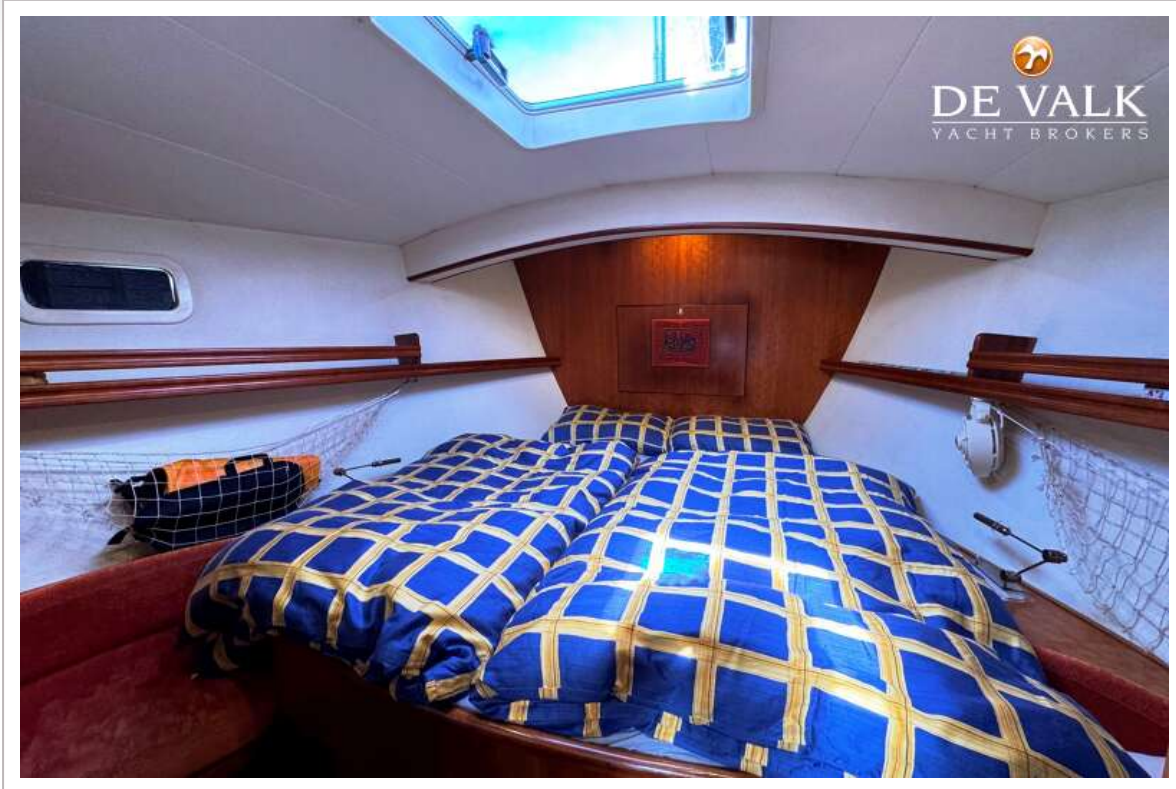
BREEHORN 44



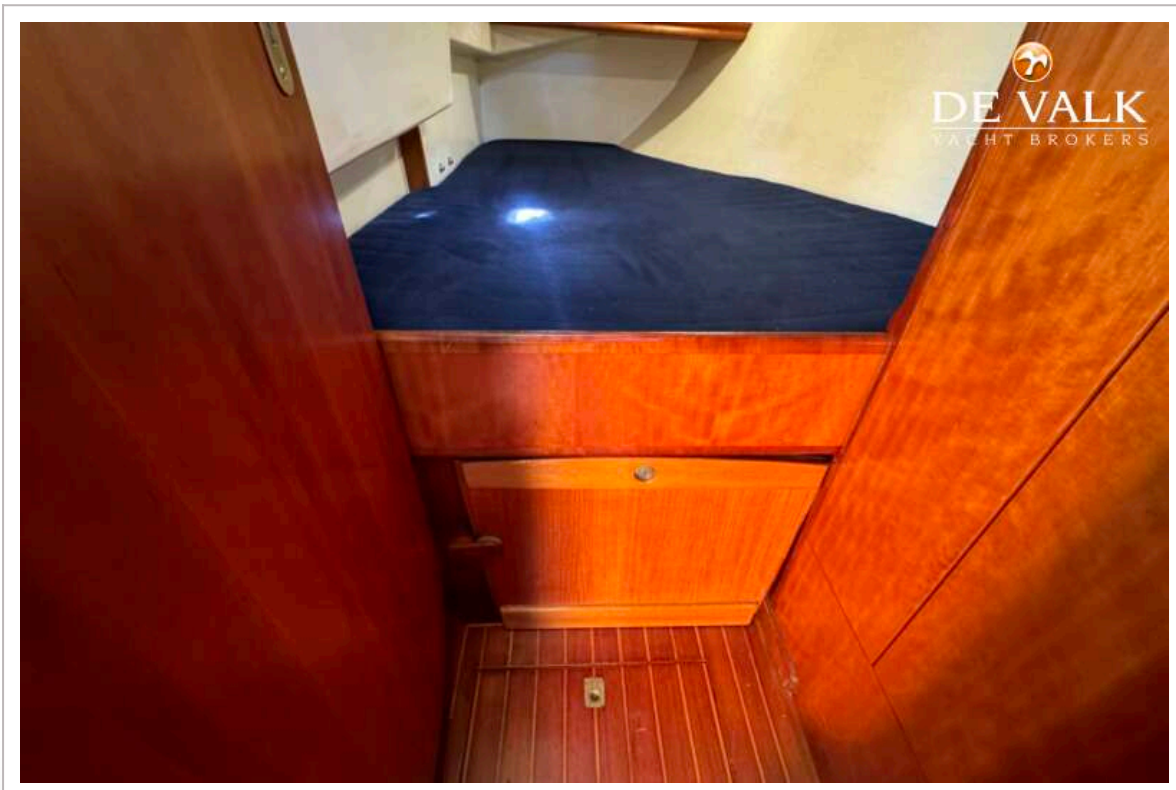
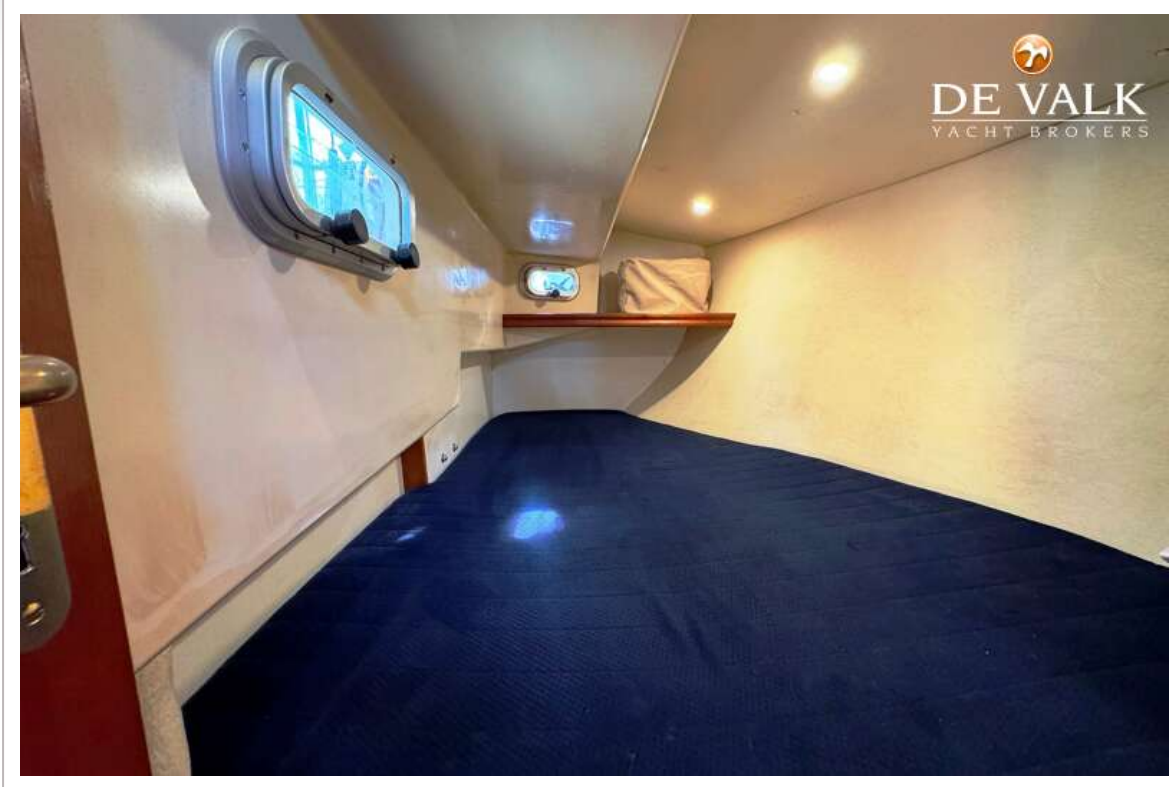
BREEHORN 44

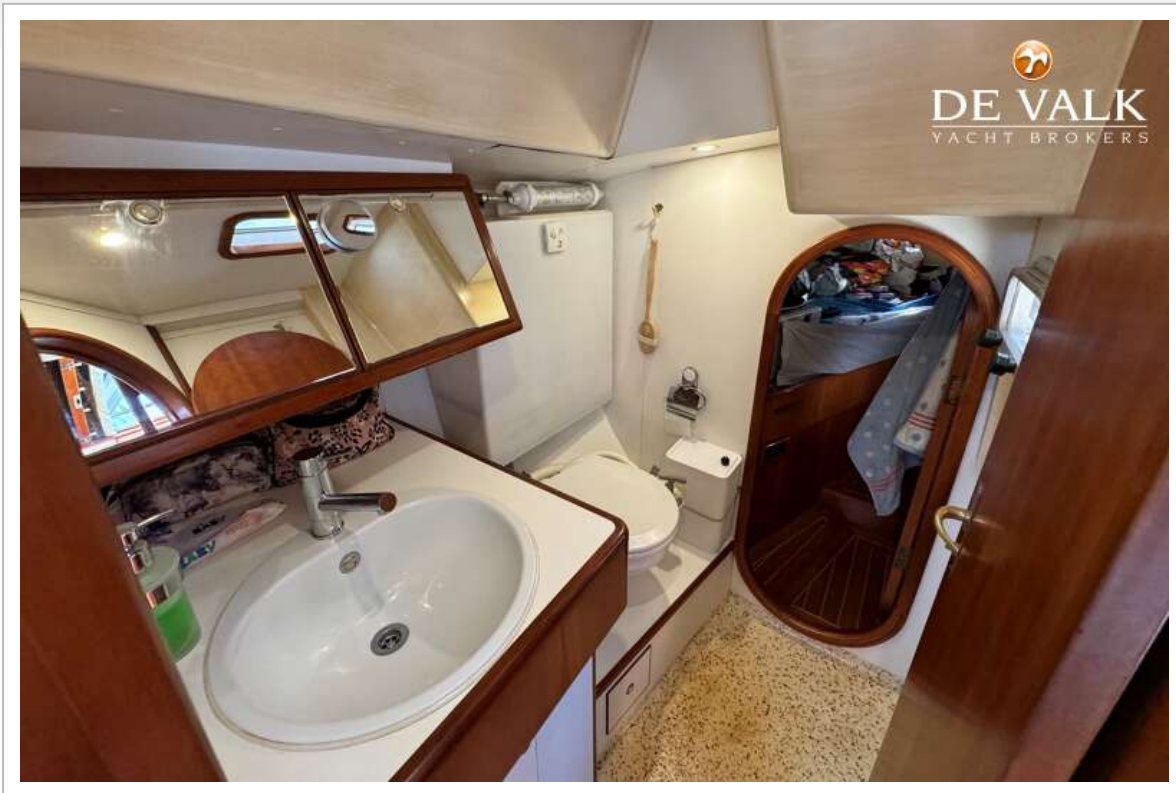


BREEHORN 44



BREEHORN 44





BREEHORN 44



