



DE VALK  
YACHT BROKERS



## MARIL 880 OPEN



DE VALK  
YACHT BROKERS

# MARIL 880 OPEN

## BROKER'S COMMENTS

The Maril 880 is a stable spacious sloop and has all the equipment to spend several days pleasantly on the water. There is room for around 16 people. In addition, the sloop contains storage space in abundance, a lockable toilet room and a fountain with cold running water. This winter she will get new cushions from her current owner.

*Mark Hesselmans*

## SPECIFICATIONS

<b>Dimensions</b>	8.80 x 3.47 x 0.70 (m)	<b>Builder</b>	Maril
<b>Built</b>	2010	<b>Cabins</b>	1
<b>Material</b>	GRP	<b>Berths</b>	
<b>Engine(s)</b>	1 x Yanmar 4H3J diesel	<b>Hp/Kw</b>	125.00 (hp), 92.00 (kw)
<b>Asking price</b>	sold (VAT )	<b>Lying</b>	at sales office

## CONTACT

<b>Sales office</b>	De Valk Loosdrecht B.V.	<b>Telephone</b>	+31 (0)35 582 90 30
<b>Address</b>	't Breukeleveense Meentje 6 1231LM Loosdrecht / Wijdmeren NL	<b>E-mail</b>	loosdrecht@devalk.nl

## DISCLAIMER

These particulars are given in good faith as supplied but cannot be guaranteed.



# MARIL 880 OPEN

## GENERAL

Model	MARIL 880 OPEN
Type	motor yacht
LOA (m)	8,80
Beam (m)	3,47
Draft (m)	0,70
Air draft (m)	1,30
Year built	2010
Builder	Maril
Country	The Netherlands
Displacement (t)	3,5
CE norm	C
Hull material	GRP
Hull colour	white
Superstructure material	GRP
Rubbing strake	fender rope
Deck material	GRP
Deck finish	teak
Antifouling (year)	yes
Fuel tank (litre)	yes
Level indicator (fuel tank)	yes
Freshwater tank (litre)	yes
Level indicator (freshwater)	yes
Blackwater tank (litre)	yes
Level indicator (blackwater)	yes
Wheel steering	hydraulic
Extra info	Cockpit lights

## ACCOMMODATION

Cabins	1
Interior	yes



# MARIL 880 OPEN

Floor	teak
Open cockpit	yes
Opening door to cockpit	yes
Sink	stainless steel
Fridge	Dometic
Freezer	yes
Water pressure system	electrical

## MACHINERY

No of engines	1
Make	Yanmar
Type	4H3J
HP	125
kW	92
Fuel	diesel
Maximum speed (kn)	9
Engine cooling system	freshwater heat exchanger
Drive	shaft
Engine controls	bowden cable
Gearbox	hydraulic
Bowthruster	electric 55kgf
Exhaust	watercooled
Propeller type	fixed
Propeller shaft material	stainless steel
Electric bilge pump	yes
Batteries	yes
Start battery	yes
Service battery	yes
Shorepower	yes

## NAVIGATION



Depth sounder	yes
Plotter	Advanseas
Navigation lights	yes

## EQUIPMENT

Cockpit cover	yes
Bimini	yes
Cockpit cushions	yes
Cockpit table	yes
Bathing platform	yes
Boarding ladder	stainless steel
Sea railing	stainless steel
Rope cutter	yes
Fenders	yes
Mooring lines	yes
Radio-cd player	Sony
Cockpit speakers	yes
Extra info	Large sunbed



# MARIL 880 OPEN



# MARIL 880 OPEN



# MARIL 880 OPEN



# MARIL 880 OPEN



# MARIL 880 OPEN



# MARIL 880 OPEN



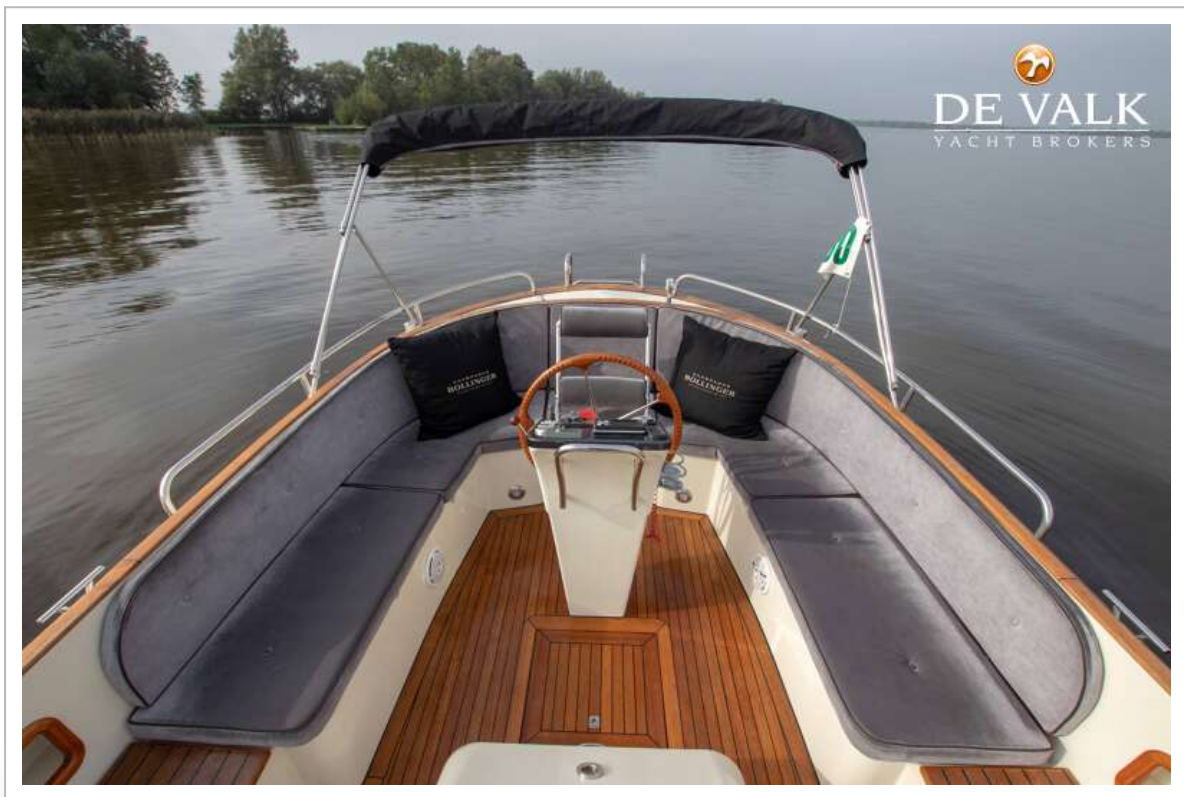
# MARIL 880 OPEN



# MARIL 880 OPEN



# MARIL 880 OPEN



# MARIL 880 OPEN



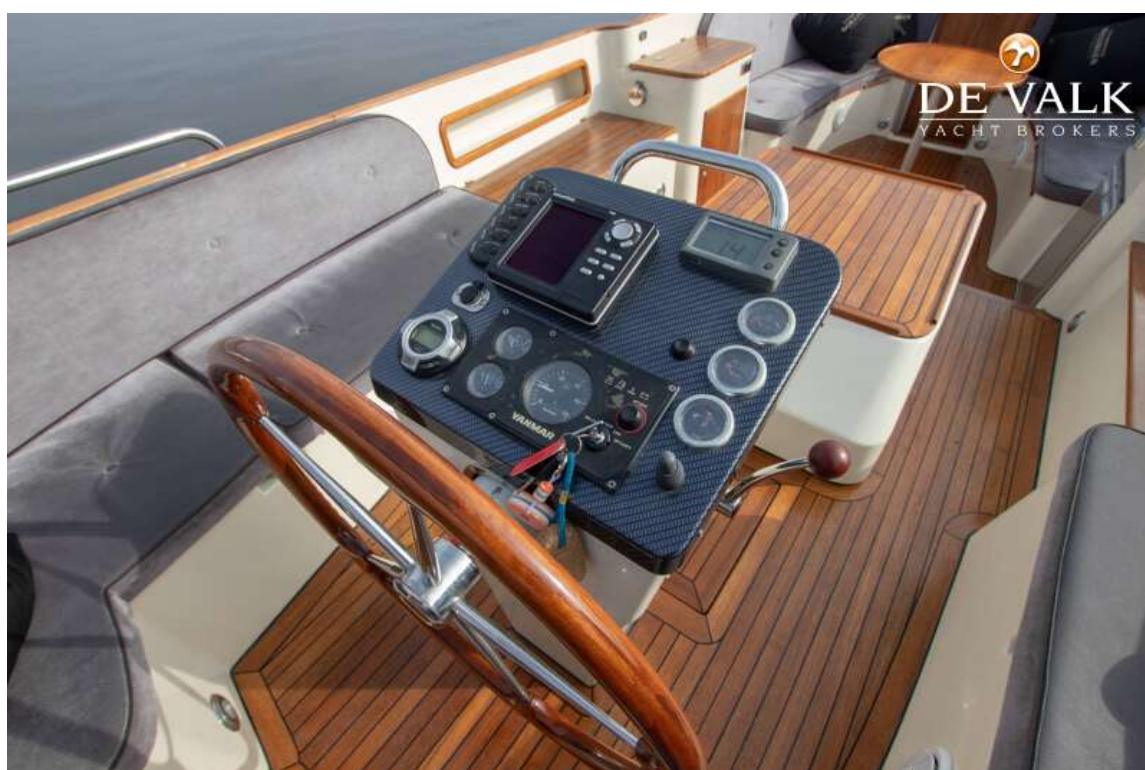
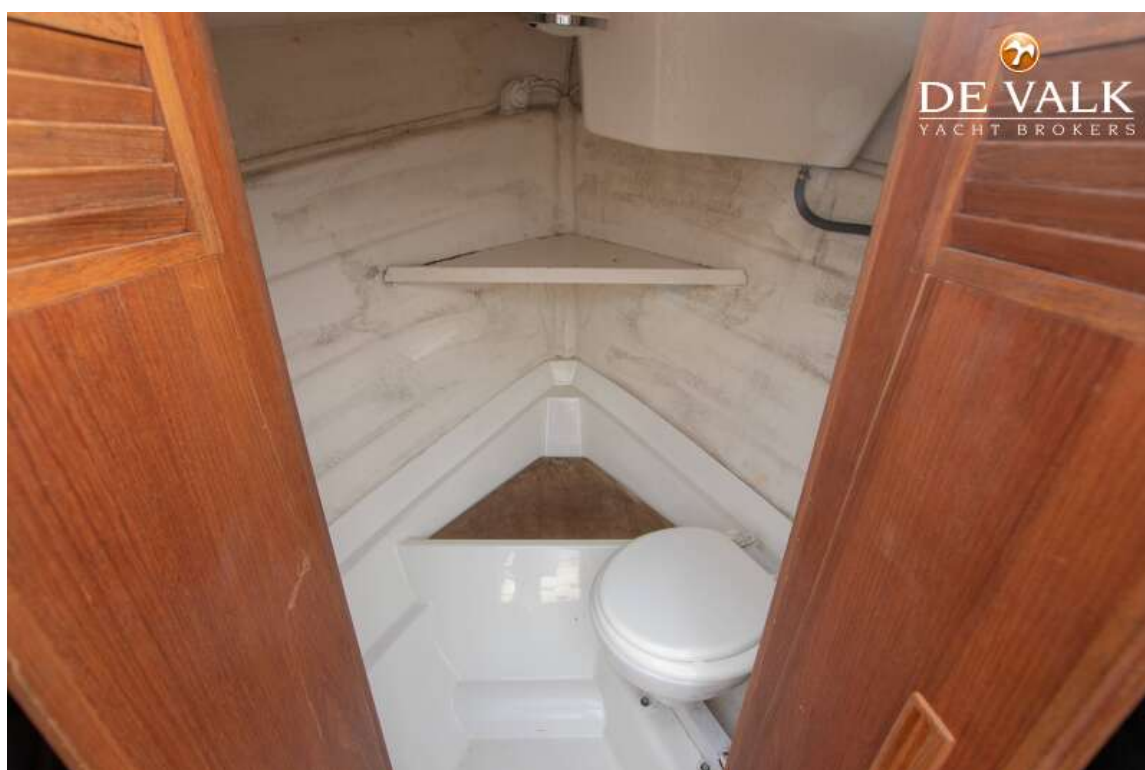
# MARIL 880 OPEN



# MARIL 880 OPEN



# MARIL 880 OPEN



# MARIL 880 OPEN



## MARIL 880 OPEN



## MARIL 880 OPEN

