



DE VALK
YACHT BROKERS



PRINZ 54 COUPE



DE VALK
YACHT BROKERS

PRINZ 54 COUPE

BROKER'S COMMENTS

Imagine feeling the wind through your hair as you cruise the shimmering water, surrounded by the luxury of a Prinz 54 Coupe. This is not just any motor yacht; this is a piece of craftsmanship and elegance that offers you the ultimate feeling of freedom and comfort on the water. The Prinz 54 Coupe has a timeless design that catches the attention of all who sail by. With its clean lines and classic look, this yacht is an icon on the water. From the first owner! Contact us today for more information.

Arjen Hoeksma

SPECIFICATIONS

Dimensions	16.50 x 4.47 x 1.00 (m)	Builder	Prinz Yachts
Built	2008	Cabins	3
Material	GRP	Berths	5
Engine(s)	2 x Volvo Penta IPS-600 diesel	Hp/Kw	2 x 435.00 (hp), 320.16 (kw)
Asking price	sold (VAT)	Lying	Croatia

CONTACT

Sales office	De Valk Dalmatia	Telephone	+385 914 567 834
Address	Ul. Velimira Skorpika 22000 Sibenik HR	E-mail	dalmatia@devalk.nl

DISCLAIMER

These particulars are given in good faith as supplied but cannot be guaranteed.



PRINZ 54 COUPE

GENERAL

Model	PRINZ 54 COUPE
Type	motor yacht
LOA (m)	16,50
Beam (m)	4,47
Draft (m)	1,00
Air draft (m)	3,65
Air draft min (m)	4,50
Year built	2008
Builder	Prinz Yachts
Country	Croatia
Designer	Quartostile Design
Displacement (t)	17
CE norm	B
Hull material	GRP
Hull colour	silver gray
Hull shape	deep-V
Superstructure material	composite
Rubbing strake	yes
Deck material	composite
Deck finish	teak
Cockpit deck finish	teak
Antifouling (year)	2024
Window frame	stainless steel
Window material	tempered glass
Deckhatch	yes
Portholes	yes
Fuel tank (litre)	1600 liter
Freshwater tank (litre)	400 liter
Blackwater tank (litre)	200 liter
Blackwater tank extraction	deck extraction



Wheel steering	hydraulic
Extra info	Fully built in epoxy composite construction resulting in a light yet strong construction throughout.
Extra info	IPS joystick "easy-docking" at helmstation and on aftdeck, left and right side
Extra info	Electric sliding sunroof and aft two sliding doors (in stainless steel frame) with access to the cockpit. Cockpit cushions and table, incl. washbasin with hot/cold water Sunbathing platform forward with cushions.

ACCOMMODATION

Cabins	3
Berths	5
Interior	Modern styled interior with panels
Open cockpit	yes
Pilot house/deck saloon	Convertible cabrio-style
Headroom saloon (m)	yes
Air-conditioning	reverse cycle airco Coolmax
Dinette	yes
Sliding door to cockpit	yes
Galley	yes
Countertop	Corian
Sink	stainless steel
Cooker	electric Schot Ceran 3 stove
Oven	yes
Fridge	3x Isotherm 724647 and 711379
Hot water system	220V + engine Boiler system
Water pressure system	electrical
Owners cabin	double bed
Wardrobe	hanging/drawers/shelves
Bathroom	en suite 1
Toilet	en suite



PRINZ 54 COUPE

Toilet system	electric
Wash basin	in the bathroom
Shower	en suite
Guest cabin 1	double bed
Wardrobe	hanging/drawers/shelves
Bathroom	shared 2
Toilet	shared
Toilet system	electric
Wash basin	in the bathroom
Shower	shared
Guest cabin 2	single bed
Wardrobe	yes

MACHINERY

No of engines	2
Make	Volvo Penta
Type	IPS-600
HP	435
kW	320.16
Fuel	diesel
Year installed	2008
Maximum speed (kn)	30
Cruising speed (kn)	24
Engine hours	795
Engine cooling system	freshwater heat exchanger
Drive	IPS
Engine controls	electrical Volvo Penta EDC/EVC
Gearbox	hydraulic Volvo Penta IPS drives
Bowthruster	electric Vetus
Exhaust	watercooled
Propeller type	fixed



PRINZ 54 COUPE

Electric bilge pump	yes
Bilge alarm	yes
Electrical installation	12/220v
Generator	yes
Running hours generator	yes
Start battery	2x (2023)
Service battery	3x (2023)
Battery monitor	yes
Battery charger	yes
Inverter	yes
Shorepower	yes
Trimtabs	yes
Extra info	New installed IPS drives 2023!
Extra info	Engine service 2024

NAVIGATION

Compass	yes
Electric compass	via autopilot
Depth sounder/log	Raymarine ST60
VHF	Raymarine
Autopilot	Raymarine ST6002 (for IPS) + remote A18105
Radar	Raymarine
GPS	Raymarine E120
Plotter	Raymarine E120
Electronis chart(s)	yes
Navigation lights	yes

EQUIPMENT

Sun awning	yes
Cockpit table	Electrically adjustable height
Bathing platform	Full beam hydraulic lowering platform (600kg capacity)



PRINZ 54 COUPE

Boarding ladder	stainless steel
Gangway	Bioinox (hydraulic)
Deck shower	hot + cold water
Anchor	Delta
Anchor chain	yes
Chain counter	Quick GHC 1202M
Windlass	electrical
Capstan	electrical
Dinghy	Brig F300 with Mercury 4 hp F4MH
Sea railing	stainless steel
Pulpit	stainless steel
Life raft	Checked 2023
Wiper	2 x
Window ventilator	Front
Horn	electric
Fenders	yes
Mooring lines	yes
TV receiver	Glomex
Extra info	Large garage on the stern (dimensions; mtr)
Extra info	Saloon table electrically adjustable height to a bed



PRINZ 54 COUPE



PRINZ 54 COUPE



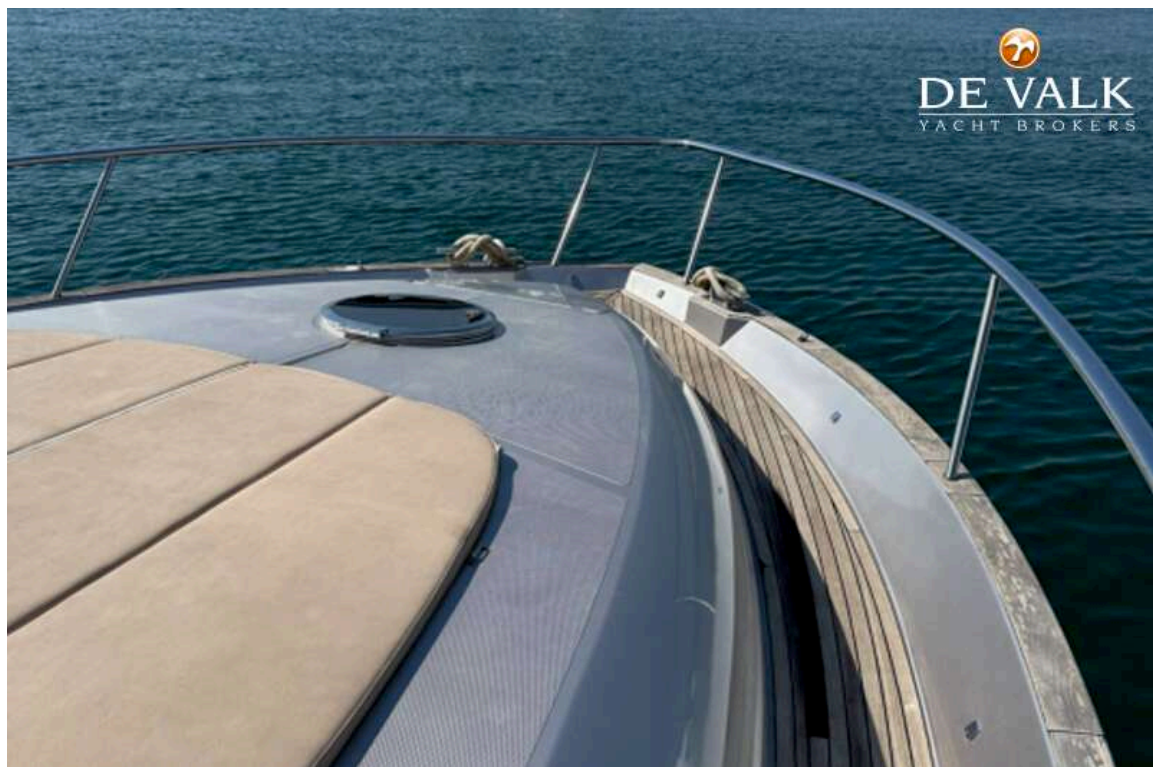
PRINZ 54 COUPE



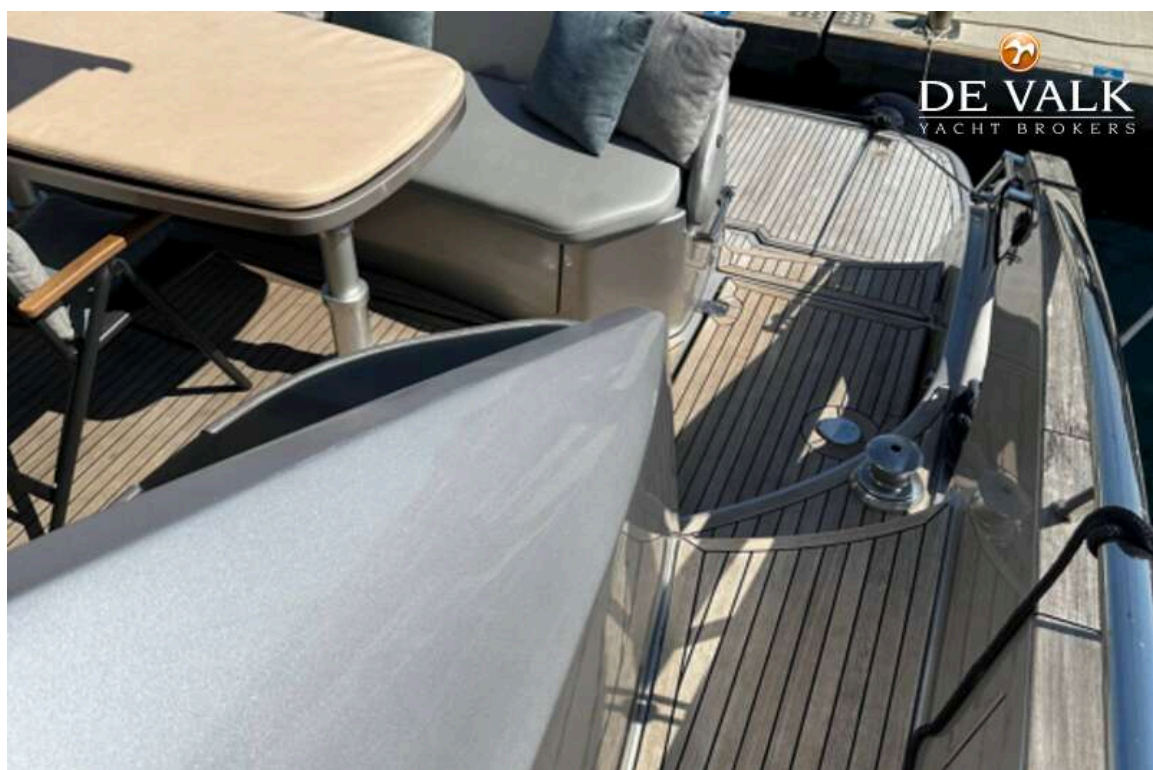
PRINZ 54 COUPE



PRINZ 54 COUPE



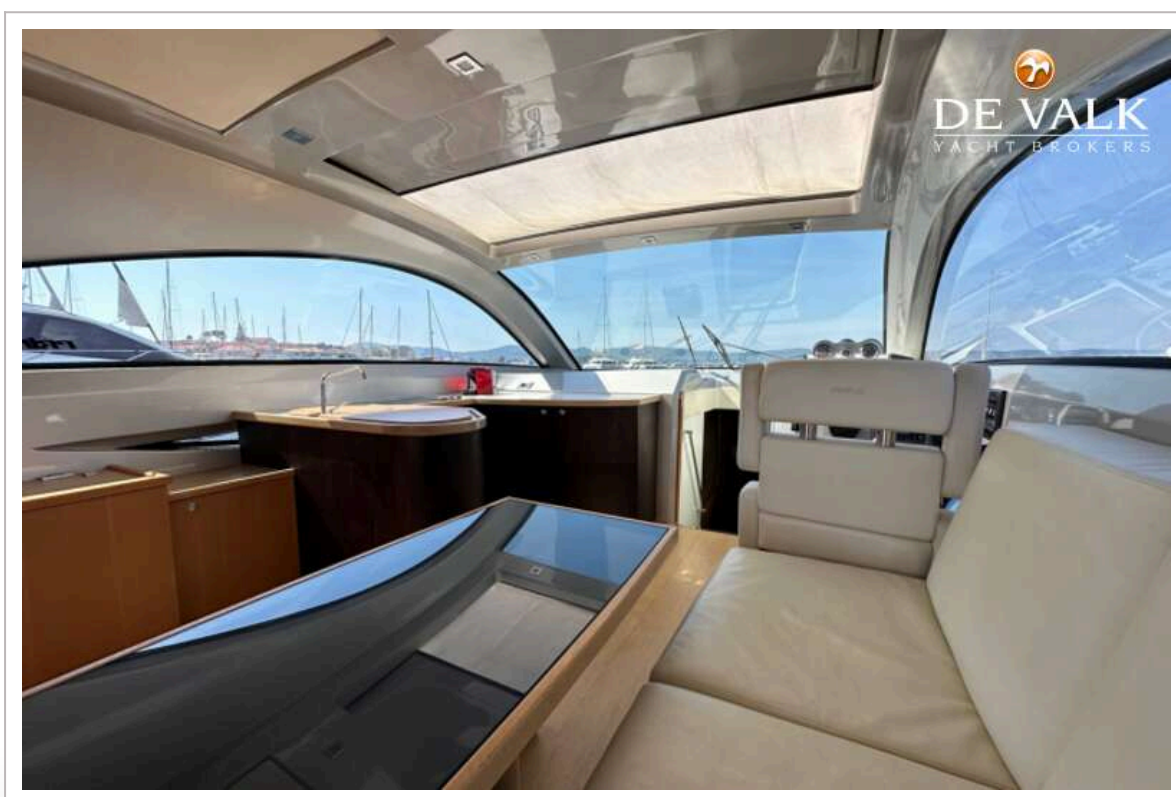
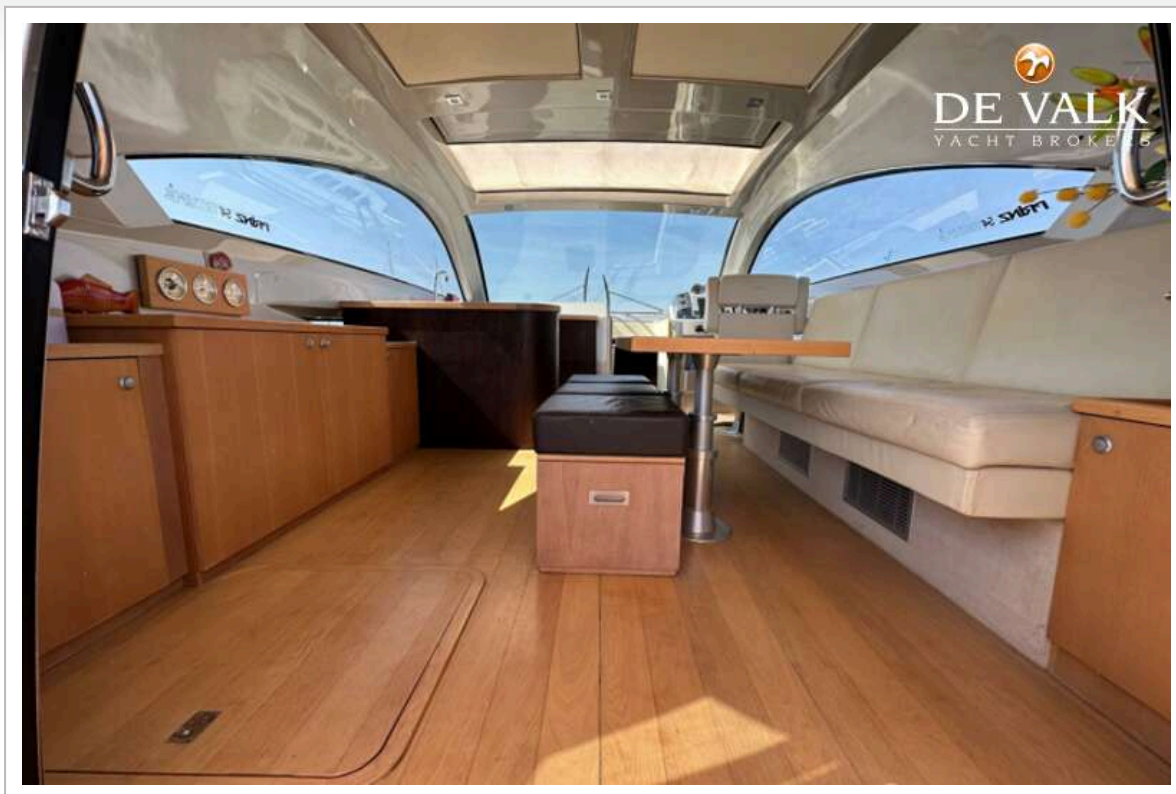
PRINZ 54 COUPE



PRINZ 54 COUPE



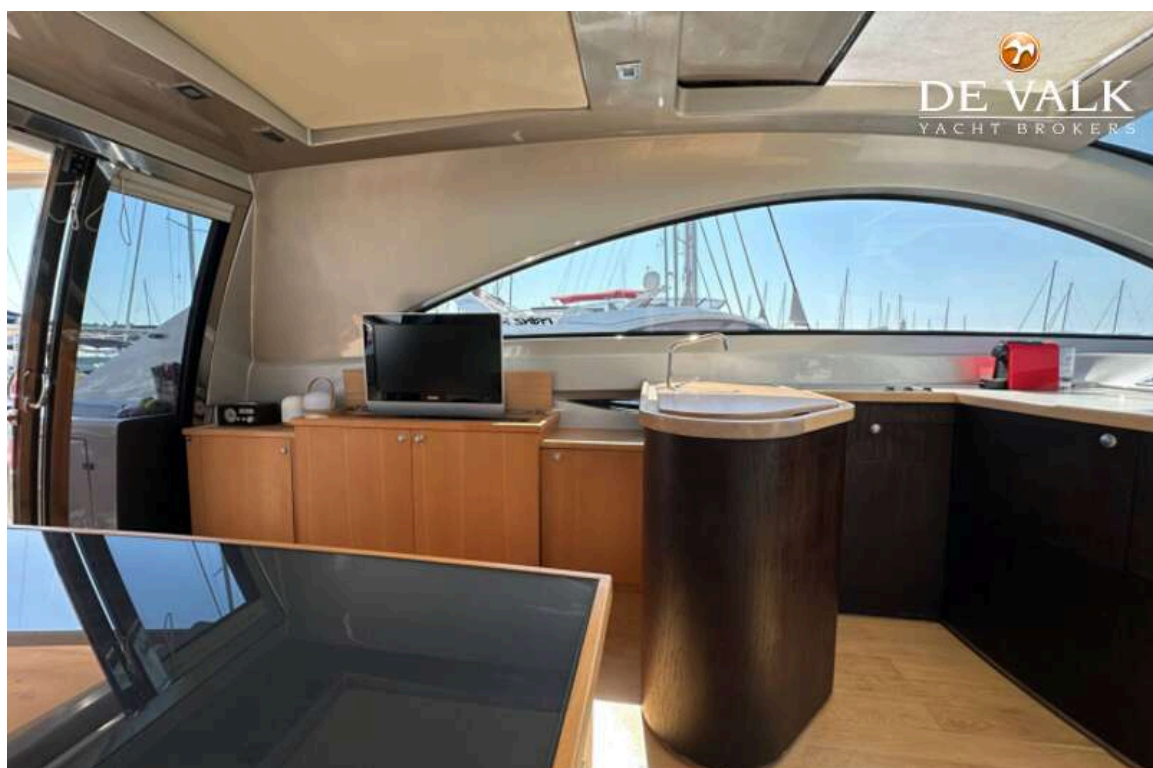
PRINZ 54 COUPE



PRINZ 54 COUPE



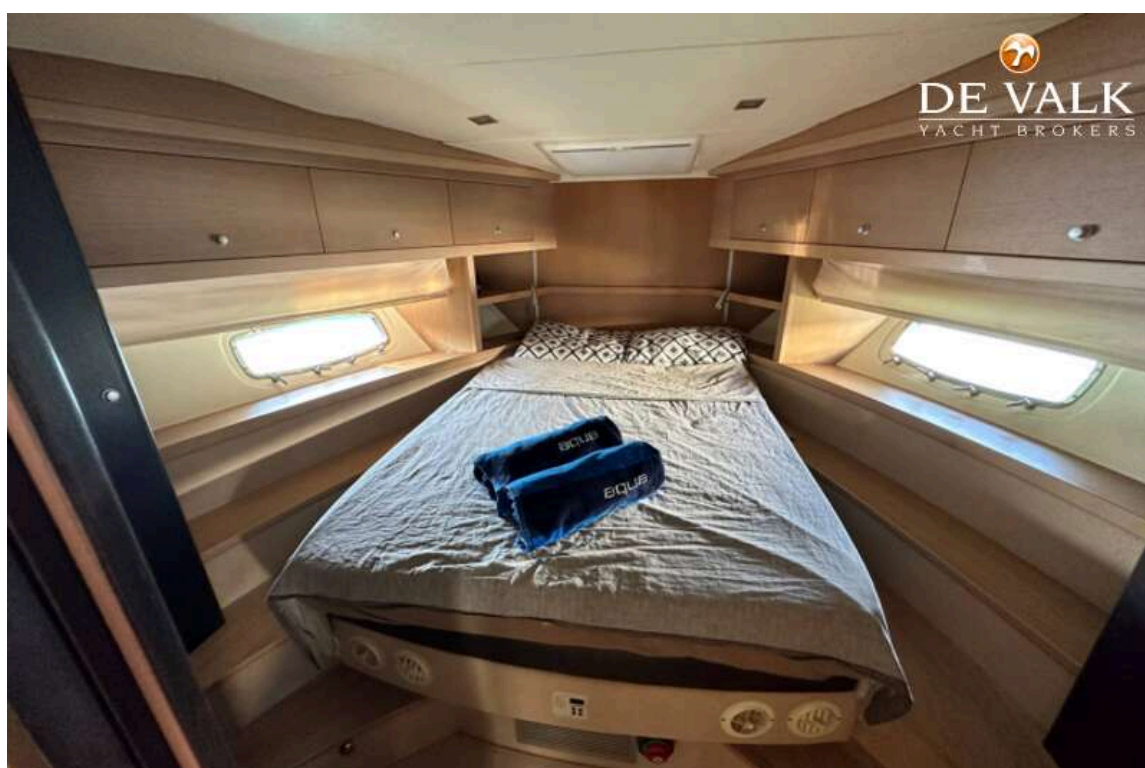
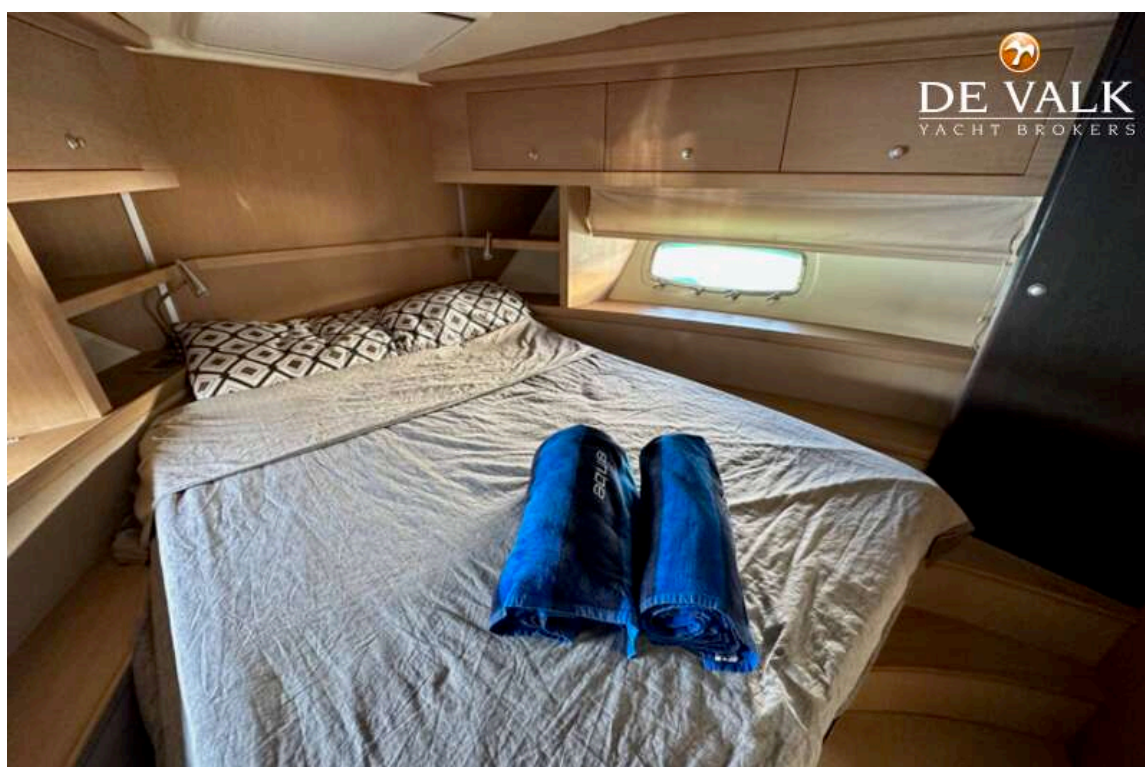
PRINZ 54 COUPE



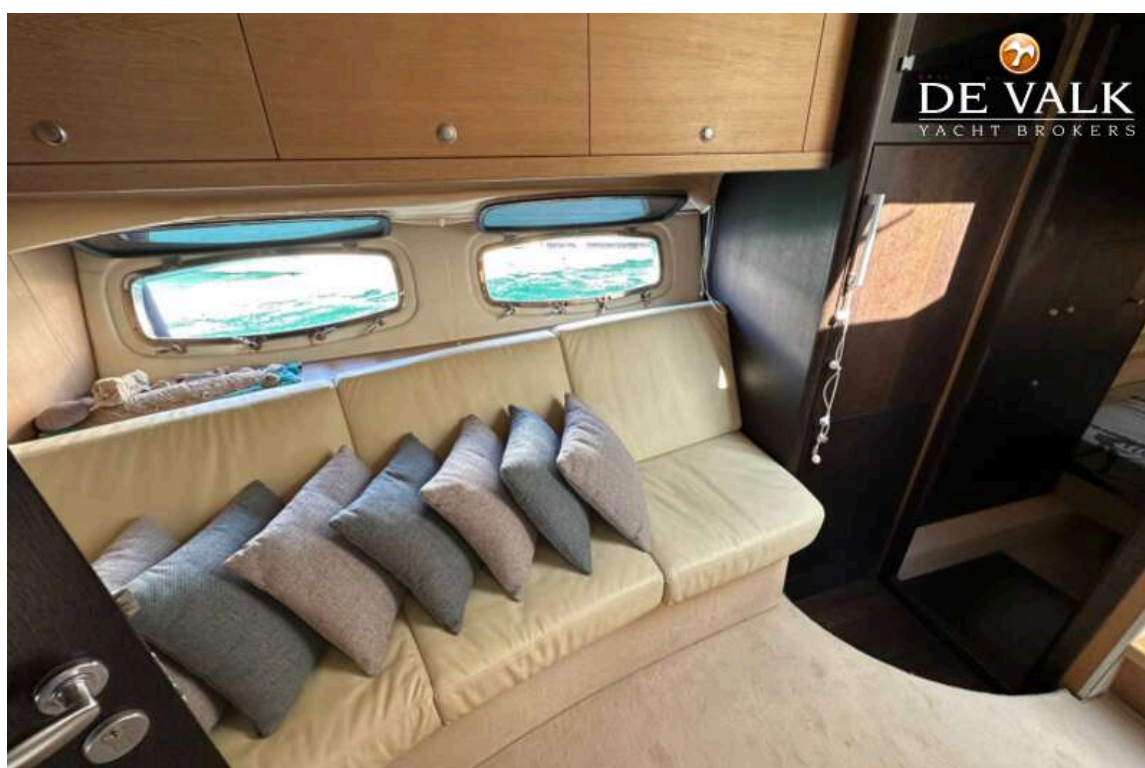
PRINZ 54 COUPE



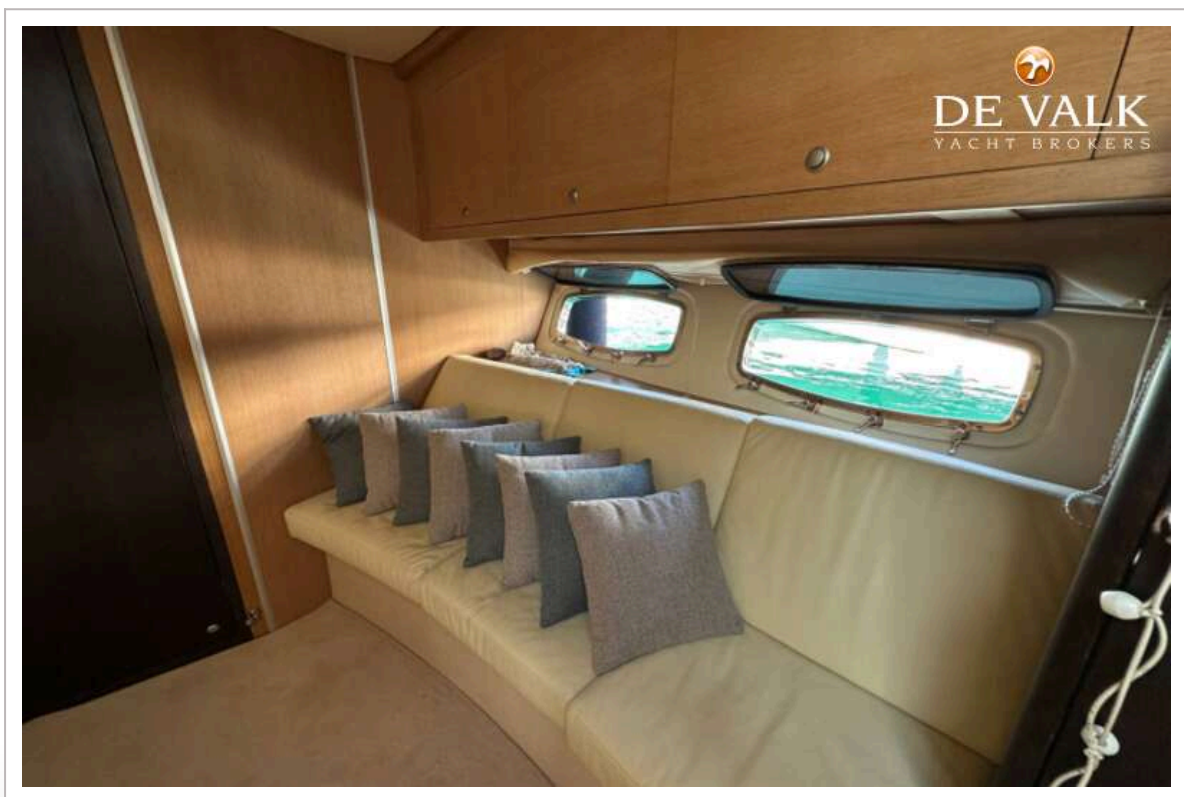
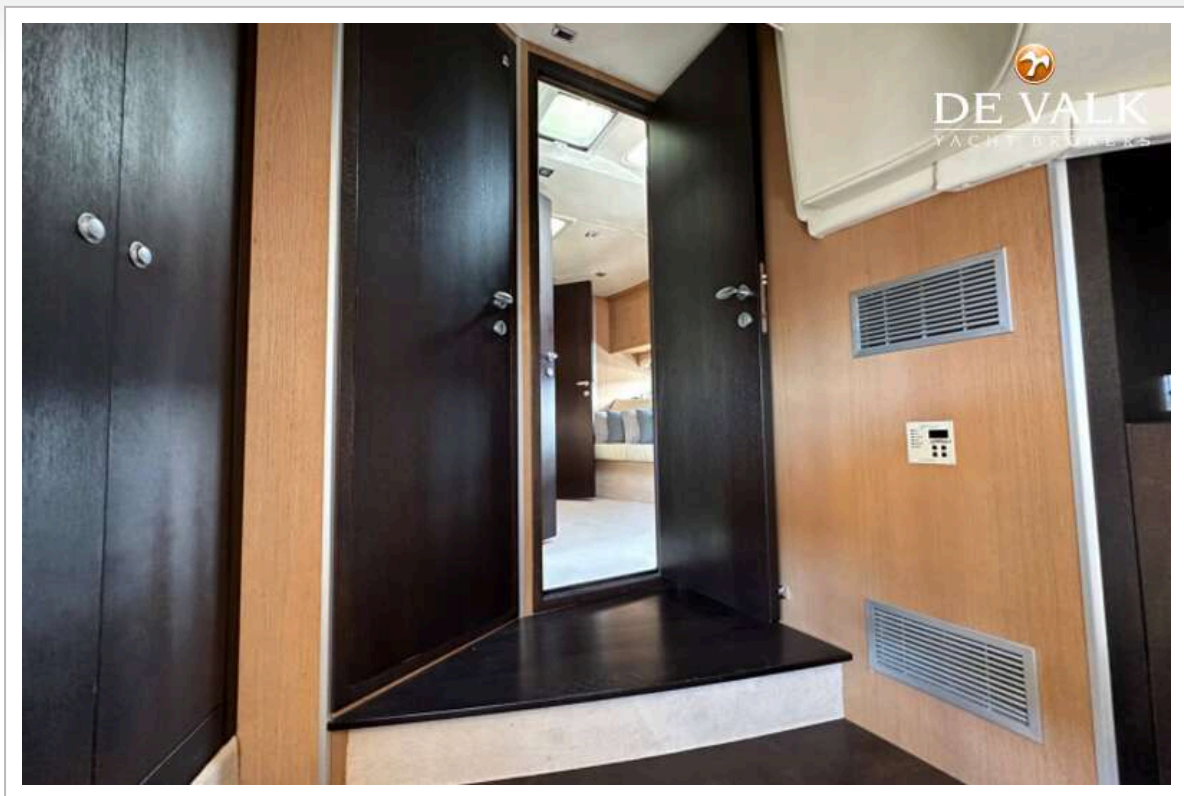
PRINZ 54 COUPE



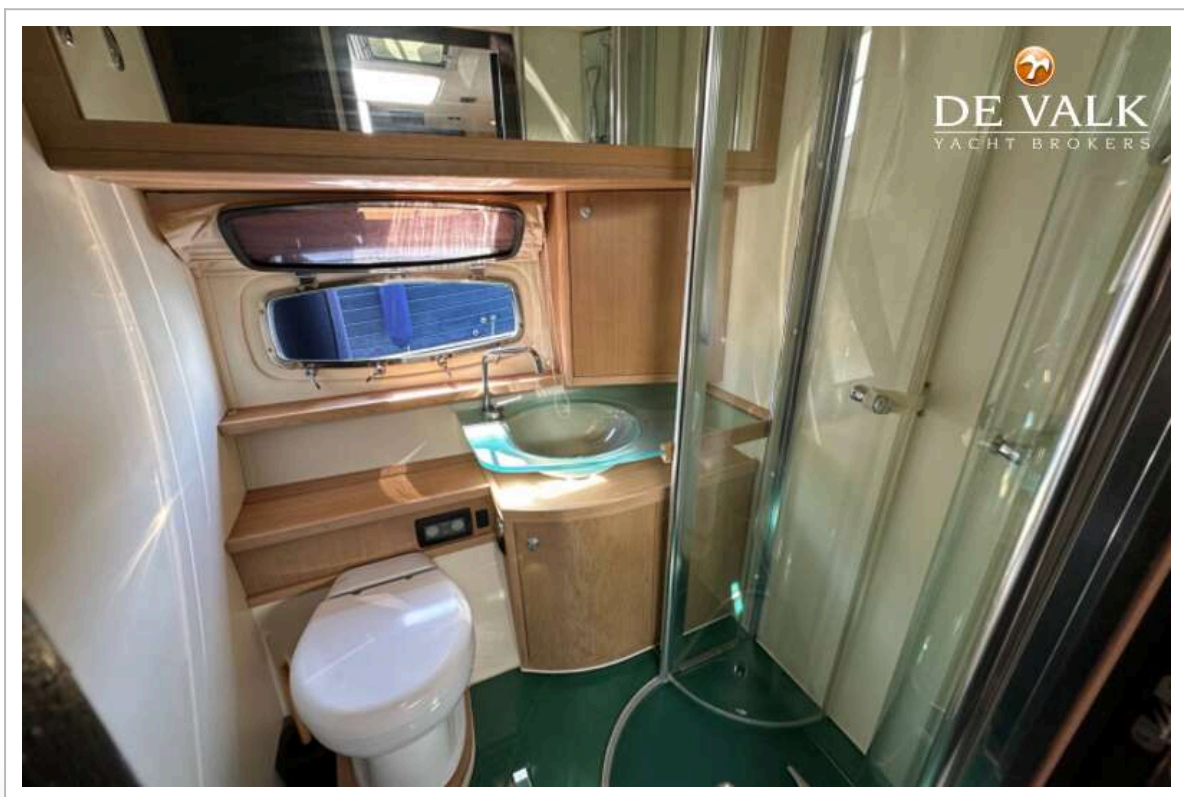
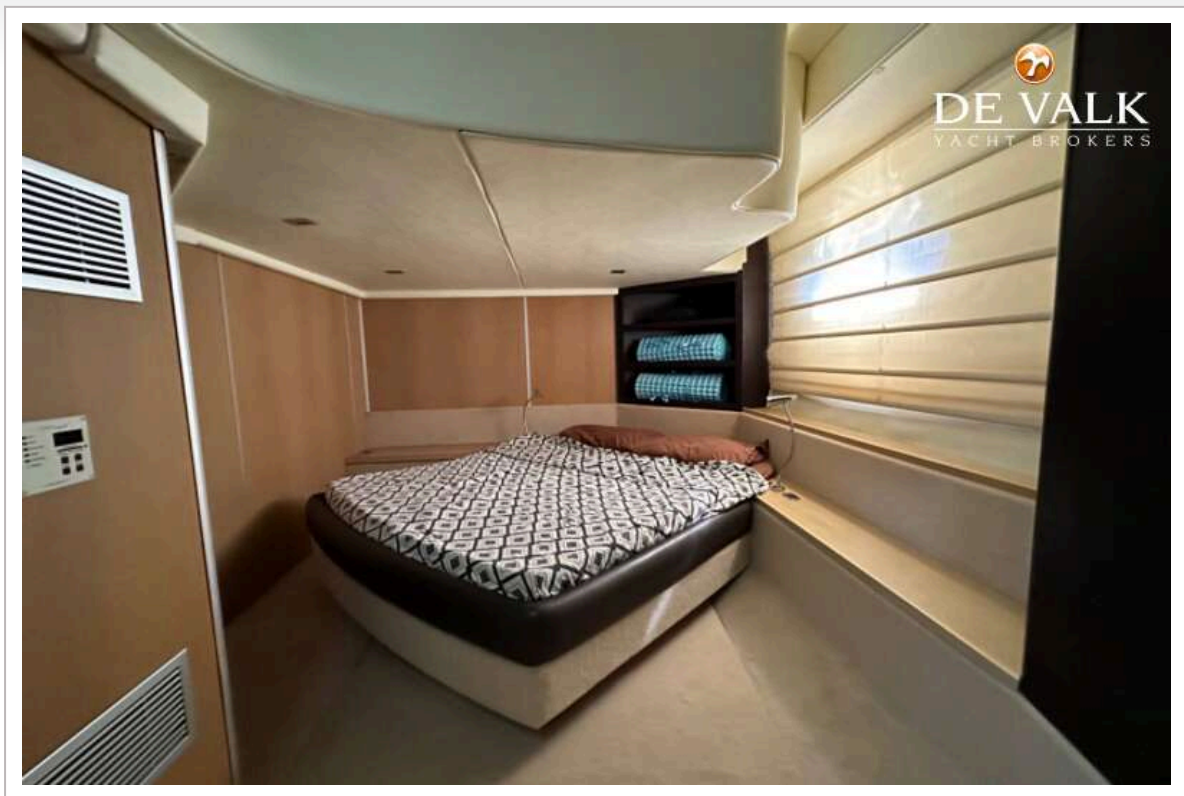
PRINZ 54 COUPE



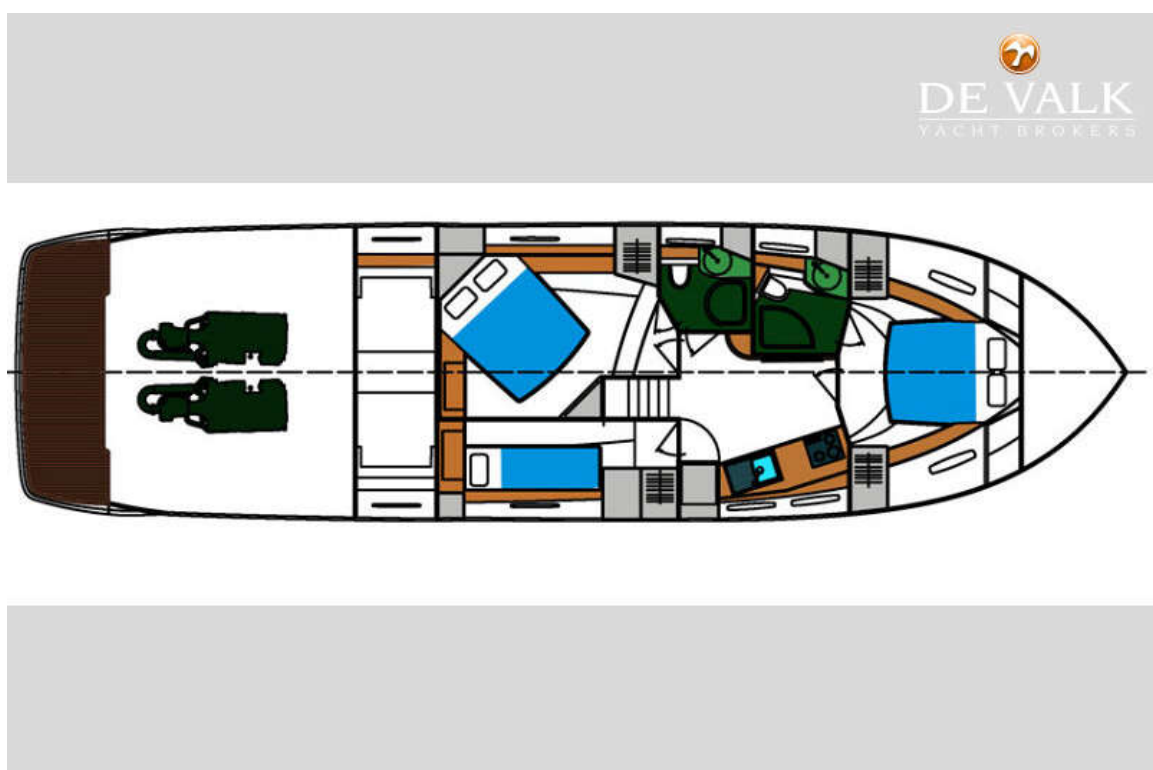
PRINZ 54 COUPE



PRINZ 54 COUPE



PRINZ 54 COUPE



PRINZ 54 COUPE

